



Full wwPDB EM Validation Report ⓘ

Mar 20, 2024 – 12:22 AM JST

PDB ID : 6KIU
EMDB ID : EMD-9998
Title : Cryo-EM structure of human MLL1-ubNCP complex (3.2 angstrom)
Authors : Huang, J.; Xue, H.; Yao, T.
Deposited on : 2019-07-20
Resolution : 3.20 Å (reported)

This is a Full wwPDB EM Validation Report for a publicly released PDB entry.

We welcome your comments at validation@mail.wwpdb.org

A user guide is available at

<https://www.wwpdb.org/validation/2017/EMValidationReportHelp>

with specific help available everywhere you see the ⓘ symbol.

The types of validation reports are described at

<http://www.wwpdb.org/validation/2017/FAQs#types>.

The following versions of software and data (see [references ⓘ](#)) were used in the production of this report:

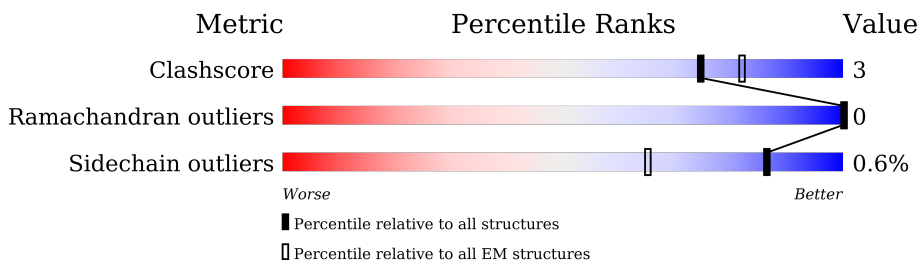
EMDB validation analysis : 0.0.1.dev70
Mogul : 1.8.5 (274361), CSD as541be (2020)
MolProbity : 4.02b-467
buster-report : 1.1.7 (2018)
Percentile statistics : 20191225.v01 (using entries in the PDB archive December 25th 2019)
MapQ : 1.9.13
Ideal geometry (proteins) : Engh & Huber (2001)
Ideal geometry (DNA, RNA) : Parkinson et al. (1996)
Validation Pipeline (wwPDB-VP) : 2.36

1 Overall quality at a glance

The following experimental techniques were used to determine the structure:
ELECTRON MICROSCOPY

The reported resolution of this entry is 3.20 Å.

Percentile scores (ranging between 0-100) for global validation metrics of the entry are shown in the following graphic. The table shows the number of entries on which the scores are based.



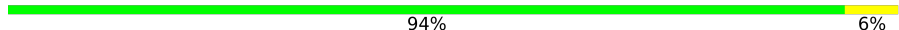
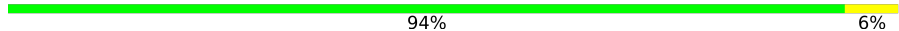





Metric	Whole archive (#Entries)	EM structures (#Entries)
Clashscore	158937	4297
Ramachandran outliers	154571	4023
Sidechain outliers	154315	3826

The table below summarises the geometric issues observed across the polymeric chains and their fit to the map. The red, orange, yellow and green segments of the bar indicate the fraction of residues that contain outliers for ≥ 3 , 2, 1 and 0 types of geometric quality criteria respectively. A grey segment represents the fraction of residues that are not modelled. The numeric value for each fraction is indicated below the corresponding segment, with a dot representing fractions $\leq 5\%$. The upper red bar (where present) indicates the fraction of residues that have poor fit to the EM map (all-atom inclusion $< 40\%$). The numeric value is given above the bar.

Mol	Chain	Length	Quality of chain
1	A	135	
1	E	135	
2	B	102	
2	F	102	
3	C	129	
3	G	129	
4	D	122	
4	H	122	

Continued on next page...

Continued from previous page...

Mol	Chain	Length	Quality of chain
5	I	145	 94% 6%
6	J	145	 94% 6%
7	K	216	 69% 13% 17%
8	N	538	 56% 9% 35%
9	R	334	 5% 73% 17% 10%
10	T	534	 23% 28% 5% 67%
11	O	76	 88% 84% 16%

2 Entry composition [i](#)

There are 15 unique types of molecules in this entry. The entry contains 20503 atoms, of which 0 are hydrogens and 0 are deuteriums.

In the tables below, the AltConf column contains the number of residues with at least one atom in alternate conformation and the Trace column contains the number of residues modelled with at most 2 atoms.

- Molecule 1 is a protein called Histone H3.

Mol	Chain	Residues	Atoms					AltConf	Trace
			Total	C	N	O	S		
1	A	97	802	506	155	138	3	0	0
1	E	97	802	506	155	138	3	0	0

- Molecule 2 is a protein called Histone H4.

Mol	Chain	Residues	Atoms					AltConf	Trace
			Total	C	N	O	S		
2	B	80	641	405	125	110	1	0	0
2	F	78	622	393	120	108	1	0	0

- Molecule 3 is a protein called Histone H2A.

Mol	Chain	Residues	Atoms				AltConf	Trace
			Total	C	N	O		
3	C	107	825	519	163	143	0	0
3	G	105	809	510	158	141	0	0

- Molecule 4 is a protein called Histone H2B 1.1.

Mol	Chain	Residues	Atoms					AltConf	Trace
			Total	C	N	O	S		
4	D	94	738	463	134	138	3	0	0
4	H	95	742	466	133	140	3	0	0

There are 4 discrepancies between the modelled and reference sequences:

Chain	Residue	Modelled	Actual	Comment	Reference
D	29	THR	SER	engineered mutation	UNP P02281

Continued on next page...

Continued from previous page...

Chain	Residue	Modelled	Actual	Comment	Reference
D	117	CYS	LYS	engineered mutation	UNP P02281
H	29	THR	SER	engineered mutation	UNP P02281
H	117	CYS	LYS	engineered mutation	UNP P02281

- Molecule 5 is a DNA chain called DNA (145-MER).

Mol	Chain	Residues	Atoms					AltConf	Trace
			Total	C	N	O	P		
5	I	145	2955	1403	538	869	145	0	0

- Molecule 6 is a DNA chain called DNA (145-MER).

Mol	Chain	Residues	Atoms					AltConf	Trace
			Total	C	N	O	P		
6	J	145	2990	1415	559	871	145	0	0

- Molecule 7 is a protein called Histone-lysine N-methyltransferase 2A.

Mol	Chain	Residues	Atoms					AltConf	Trace
			Total	C	N	O	S		
7	K	179	1436	901	268	252	15	0	0

- Molecule 8 is a protein called Retinoblastoma-binding protein 5.

Mol	Chain	Residues	Atoms					AltConf	Trace
			Total	C	N	O	S		
8	N	352	2768	1743	479	531	15	0	0

- Molecule 9 is a protein called WD repeat-containing protein 5.

Mol	Chain	Residues	Atoms					AltConf	Trace
			Total	C	N	O	S		
9	R	300	2326	1485	388	444	9	0	0

- Molecule 10 is a protein called Set1/Ash2 histone methyltransferase complex subunit ASH2.

Mol	Chain	Residues	Atoms					AltConf	Trace
			Total	C	N	O	S		
10	T	176	1399	906	234	253	6	0	0

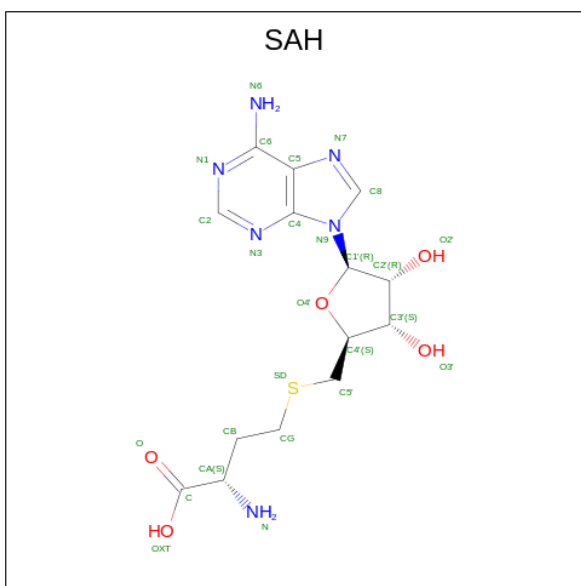
- Molecule 11 is a protein called Ubiquitin.

Mol	Chain	Residues	Atoms					AltConf	Trace
			Total	C	N	O	S		
11	O	76	603	379	105	117	2	0	0

There is a discrepancy between the modelled and reference sequences:

Chain	Residue	Modelled	Actual	Comment	Reference
O	76	CYS	GLY	engineered mutation	UNP P62979

- Molecule 12 is S-ADENOSYL-L-HOMOCYSTEINE (three-letter code: SAH) (formula: $C_{14}H_{20}N_6O_5S$).

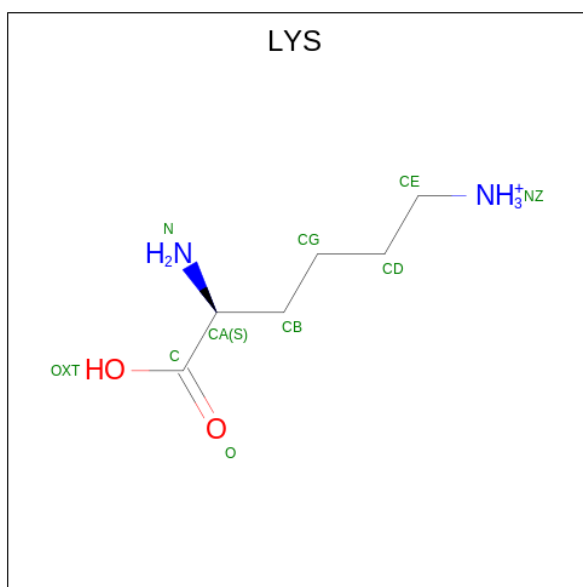


Mol	Chain	Residues	Atoms					AltConf
			Total	C	N	O	S	
12	K	1	26	14	6	5	1	0

- Molecule 13 is ZINC ION (three-letter code: ZN) (formula: Zn).

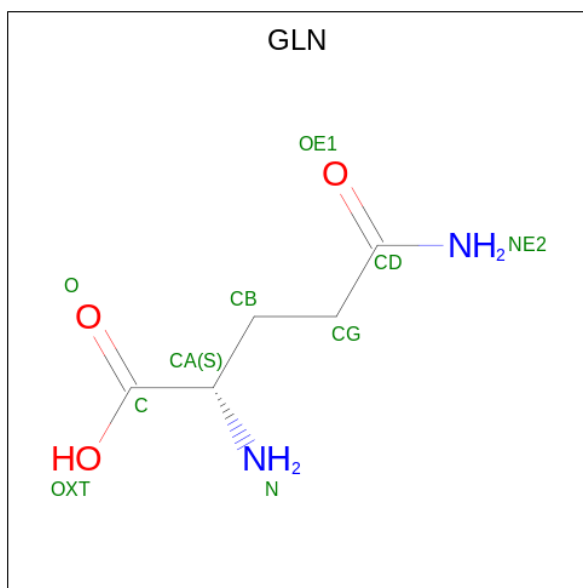
Mol	Chain	Residues	Atoms		AltConf
13	K	1	Total	Zn	0
			1	1	

- Molecule 14 is LYSINE (three-letter code: LYS) (formula: $C_6H_{15}N_2O_2$).



Mol	Chain	Residues	Atoms				AltConf
			Total	C	N	O	
14	K	1	9	6	2	1	0

- Molecule 15 is GLUTAMINE (three-letter code: GLN) (formula: C₅H₁₀N₂O₃).



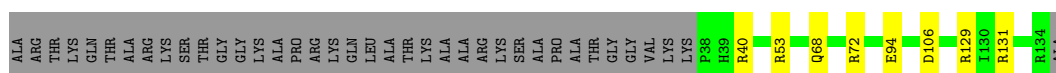
Mol	Chain	Residues	Atoms				AltConf
			Total	C	N	O	
15	K	1	9	5	2	2	0

3 Residue-property plots [i](#)

These plots are drawn for all protein, RNA, DNA and oligosaccharide chains in the entry. The first graphic for a chain summarises the proportions of the various outlier classes displayed in the second graphic. The second graphic shows the sequence view annotated by issues in geometry and atom inclusion in map density. Residues are color-coded according to the number of geometric quality criteria for which they contain at least one outlier: green = 0, yellow = 1, orange = 2 and red = 3 or more. A red diamond above a residue indicates a poor fit to the EM map for this residue (all-atom inclusion < 40%). Stretches of 2 or more consecutive residues without any outlier are shown as a green connector. Residues present in the sample, but not in the model, are shown in grey.

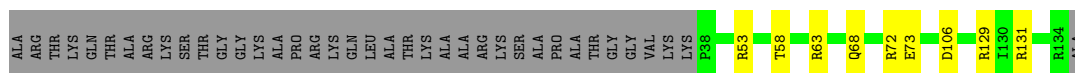
- Molecule 1: Histone H3

Chain A: 66% 6% 28%



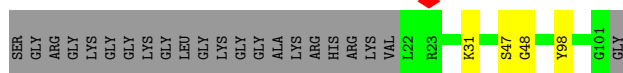
- Molecule 1: Histone H3

Chain E: 65% 7% 28%



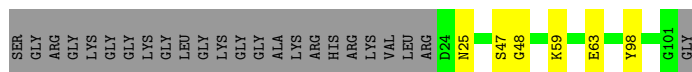
- Molecule 2: Histone H4

Chain B: 75% 22%



- Molecule 2: Histone H4

Chain F: 71% 6% 24%




- Molecule 3: Histone H2A

Chain C: 81% 17%



- Molecule 3: Histone H2A

Chain G:  80% 19%


SER
GLY
ARG
GLY
LYS
GLN
GLY
GLY
LYS
THR
ARG
ALA
K13
Q104
M110
F117
LYS
LYS
THR
GLU
SER
SER
LYS
SER
ALA
LYS
SER
LYS

- Molecule 4: Histone H2B 1.1

Chain D:  67% 10% 23%

ALA
LYS
SER
ALA
PRO
ALA
PRO
LYS
LYS
SER
SER
LYS
LYS
ALA
VAL
THR
THR
THR
GLN
LYS
LYS
ASP
GLY
LYS
LYS
ARC
R27
S33
Y34
Y39
K43
D65
R69
T87
E90
L98
E102
H106
S120
ALA
LYS

- Molecule 4: Histone H2B 1.1

Chain H:  75% 22%

ALA
LYS
SER
ALA
PRO
ALA
PRO
LYS
LYS
GLY
SER
LYS
LYS
ALA
VAL
THR
THR
THR
GLN
LYS
LYS
ASP
GLY
LYS
LYS
ARG
K28
D65
T87
E90
K122

- Molecule 5: DNA (145-MER)

Chain I:  94% 6%

T2
T27
C28
A41
T68
A69
C92
T105
T129
C130
A146

- Molecule 6: DNA (145-MER)

Chain J:  94% 6%

T2
G56
A60
G63
G64
G68
G69
G82
T89
A90
A146

- Molecule 7: Histone-lysine N-methyltransferase 2A

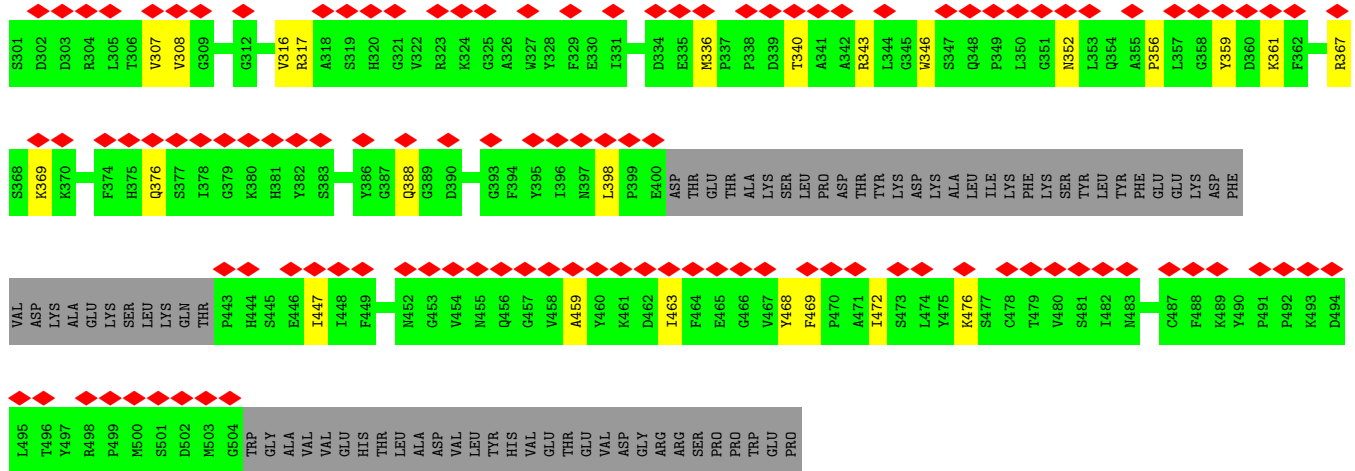
Chain K:  69% 13% 17%

ASN
GLU
PRO
PRO
LEU
ASN
PRO
HIS
GLY
SER
A3764
R3765
H3769
L3770
R3771
F3775
D3776
Q3787
PRO
PRO
GLU
TYR
ASN
ASN
ASN
ASP
GLU
GLU
GLU
GLU
GLU
GLU
VAL
GLN
LEU
LYS
SER
SER
A3806
R3807
R3808
L3814
R3819
I3838
R3847
E3857
N3861
R3864
S3865
I3866
D3869

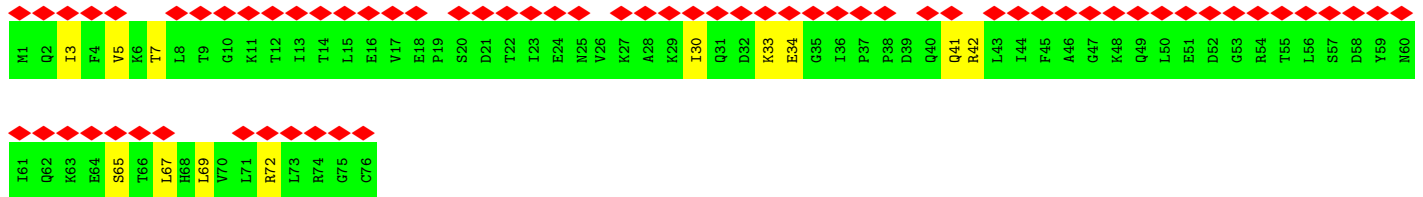
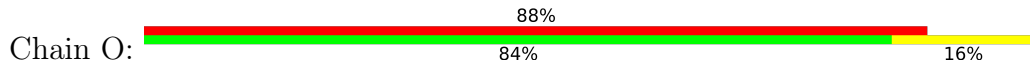
Y3875
D3876
S3877
K3878
R3886
D3889
S3890
E3891
V3892
V3893
D3894
H3898
I3905
N3906
H3907
S3908
C3909
H3925
R3932
E3938
E3939
Y3944
Y3945
PHE
PRO
ILE
GLU
GLN
ASP
ALA
SER
ASN
ASN
LYS
I3955
N3958
A3961
F3967
I3968
N3969

- Molecule 8: Retinoblastoma-binding protein 5

Chain N:  56% 9% 35%



● Molecule 11: Ubiquitin



4 Experimental information

Property	Value	Source
EM reconstruction method	SINGLE PARTICLE	Depositor
Imposed symmetry	POINT, C1	Depositor
Number of particles used	139535	Depositor
Resolution determination method	FSC 0.143 CUT-OFF	Depositor
CTF correction method	PHASE FLIPPING ONLY	Depositor
Microscope	FEI TITAN KRIOS	Depositor
Voltage (kV)	300	Depositor
Electron dose ($e^-/\text{\AA}^2$)	50.0	Depositor
Minimum defocus (nm)	Not provided	
Maximum defocus (nm)	Not provided	
Magnification	Not provided	
Image detector	GATAN K3 (6k x 4k)	Depositor
Maximum map value	0.163	Depositor
Minimum map value	-0.094	Depositor
Average map value	-0.000	Depositor
Map value standard deviation	0.005	Depositor
Recommended contour level	0.012	Depositor
Map size (\AA)	294.30002, 294.30002, 294.30002	wwPDB
Map dimensions	270, 270, 270	wwPDB
Map angles ($^\circ$)	90.0, 90.0, 90.0	wwPDB
Pixel spacing (\AA)	1.09, 1.09, 1.09	Depositor

5 Model quality [i](#)

5.1 Standard geometry [i](#)

Bond lengths and bond angles in the following residue types are not validated in this section: SAH, ZN

The Z score for a bond length (or angle) is the number of standard deviations the observed value is removed from the expected value. A bond length (or angle) with $|Z| > 5$ is considered an outlier worth inspection. RMSZ is the root-mean-square of all Z scores of the bond lengths (or angles).

Mol	Chain	Bond lengths		Bond angles	
		RMSZ	# Z >5	RMSZ	# Z >5
1	A	0.46	0/814	0.56	0/1092
1	E	0.46	0/814	0.56	0/1092
2	B	0.50	0/648	0.64	0/868
2	F	0.49	0/629	0.61	0/843
3	C	0.45	0/835	0.58	0/1127
3	G	0.42	0/819	0.58	0/1106
4	D	0.46	0/749	0.59	0/1008
4	H	0.43	0/753	0.56	0/1012
5	I	0.81	0/3311	0.99	0/5103
6	J	0.81	0/3357	0.98	0/5184
7	K	0.33	0/1462	0.55	0/1952
8	N	0.30	0/2826	0.56	0/3838
9	R	0.28	0/2382	0.51	0/3231
10	T	0.27	0/1442	0.50	0/1950
11	O	0.26	0/609	0.51	0/819
All	All	0.55	0/21450	0.73	0/30225

Chiral center outliers are detected by calculating the chiral volume of a chiral center and verifying if the center is modelled as a planar moiety or with the opposite hand. A planarity outlier is detected by checking planarity of atoms in a peptide group, atoms in a mainchain group or atoms of a sidechain that are expected to be planar.

Mol	Chain	#Chirality outliers	#Planarity outliers
2	B	0	1

There are no bond length outliers.

There are no bond angle outliers.

There are no chirality outliers.

All (1) planarity outliers are listed below:

Mol	Chain	Res	Type	Group
2	B	31	LYS	Peptide

5.2 Too-close contacts [i](#)

In the following table, the Non-H and H(model) columns list the number of non-hydrogen atoms and hydrogen atoms in the chain respectively. The H(added) column lists the number of hydrogen atoms added and optimized by MolProbity. The Clashes column lists the number of clashes within the asymmetric unit, whereas Symm-Clashes lists symmetry-related clashes.

Mol	Chain	Non-H	H(model)	H(added)	Clashes	Symm-Clashes
1	A	802	0	841	4	0
1	E	802	0	841	5	0
2	B	641	0	684	2	0
2	F	622	0	660	4	0
3	C	825	0	882	2	0
3	G	809	0	864	1	0
4	D	738	0	760	7	0
4	H	742	0	765	2	0
5	I	2955	0	1627	6	0
6	J	2990	0	1628	6	0
7	K	1436	0	1428	18	0
8	N	2768	0	2715	28	0
9	R	2326	0	2309	31	0
10	T	1399	0	1363	15	0
11	O	603	0	631	8	0
12	K	26	0	19	1	0
13	K	1	0	0	0	0
14	K	9	0	12	0	0
15	K	9	0	8	0	0
All	All	20503	0	18037	123	0

The all-atom clashscore is defined as the number of clashes found per 1000 atoms (including hydrogen atoms). The all-atom clashscore for this structure is 3.

All (123) close contacts within the same asymmetric unit are listed below, sorted by their clash magnitude.

Atom-1	Atom-2	Interatomic distance (Å)	Clash overlap (Å)
9:R:144:ILE:HB	9:R:156:TRP:HB2	1.75	0.67
11:O:33:LYS:HG3	11:O:34:GLU:HG2	1.78	0.66
1:A:106:ASP:OD2	1:A:131:ARG:NH2	2.31	0.63
1:E:106:ASP:OD2	1:E:131:ARG:NH2	2.31	0.62

Continued on next page...

Continued from previous page...

Atom-1	Atom-2	Interatomic distance (Å)	Clash overlap (Å)
10:T:336:MET:HB3	10:T:388:GLN:HG3	1.80	0.61
7:K:3808:ARG:HH22	7:K:3847:ARG:HD3	1.66	0.61
8:N:313:ILE:HG12	8:N:318:VAL:HG22	1.82	0.61
7:K:3932:ARG:NH2	7:K:3938:GLU:OE2	2.34	0.59
5:I:41:DA:H5''	8:N:251:ARG:HH12	1.67	0.59
8:N:94:ASP:HB3	8:N:98:GLY:H	1.67	0.59
8:N:80:LYS:HG2	8:N:92:GLN:HE21	1.68	0.59
10:T:361:LYS:HB3	10:T:376:GLN:HE21	1.68	0.59
11:O:5:VAL:HG22	11:O:67:LEU:HB2	1.83	0.58
7:K:3866:ILE:HB	10:T:352:ASN:HD22	1.68	0.57
9:R:39:PHE:HB2	9:R:329:LEU:HD12	1.86	0.57
9:R:217:VAL:HG22	9:R:233:THR:HG22	1.88	0.56
10:T:317:ARG:NH1	10:T:352:ASN:O	2.36	0.56
8:N:12:ASN:O	8:N:323:GLN:NE2	2.38	0.55
9:R:283:VAL:HB	9:R:297:LEU:HB2	1.89	0.55
8:N:176:LEU:HD22	8:N:185:LEU:HD11	1.89	0.55
10:T:340:THR:HG22	10:T:476:LYS:HB2	1.88	0.55
10:T:356:PRO:HG2	10:T:359:TYR:HB2	1.89	0.54
9:R:165:LYS:NZ	9:R:200:THR:O	2.41	0.54
7:K:3861:ASN:HB2	7:K:3894:ASP:HB3	1.90	0.53
8:N:88:ASN:HD21	8:N:108:SER:HA	1.72	0.53
10:T:447:ILE:HG22	10:T:459:ALA:HB3	1.90	0.53
2:F:59:LYS:NZ	2:F:63:GLU:OE2	2.37	0.53
9:R:223:SER:HB3	9:R:228:TYR:HB2	1.91	0.53
1:E:68:GLN:HE21	1:E:72:ARG:HH21	1.56	0.52
9:R:138:ASN:ND2	9:R:142:ASN:OD1	2.36	0.52
9:R:220:VAL:HG12	9:R:231:ALA:HA	1.92	0.52
12:K:4001:SAH:SD	12:K:4001:SAH:N	2.72	0.52
8:N:127:PRO:HB2	8:N:130:SER:HB2	1.90	0.52
9:R:136:ASN:ND2	9:R:177:VAL:O	2.43	0.52
1:A:68:GLN:HE21	1:A:72:ARG:HH21	1.56	0.52
7:K:3906:ASN:ND2	7:K:3939:GLU:OE2	2.37	0.51
7:K:3898:HIS:HE2	8:N:337:LYS:HD3	1.73	0.51
9:R:41:LEU:HB2	9:R:327:ILE:HB	1.93	0.51
9:R:94:ALA:HB3	9:R:103:VAL:HG12	1.93	0.51
8:N:148:ASP:HB2	8:N:176:LEU:HD11	1.93	0.51
10:T:307:VAL:HG11	10:T:472:ILE:HD13	1.93	0.51
1:E:63:ARG:HH21	6:J:60:DA:H5''	1.76	0.50
7:K:3909:CYS:HB2	7:K:3961:ALA:HB3	1.94	0.50
9:R:304:VAL:HA	9:R:320:ALA:HA	1.92	0.50
7:K:3769:HIS:ND1	7:K:3770:LEU:O	2.40	0.50

Continued on next page...

Continued from previous page...

Atom-1	Atom-2	Interatomic distance (Å)	Clash overlap (Å)
9:R:175:SER:OG	9:R:189:SER:OG	2.30	0.49
9:R:278:SER:OG	9:R:280:ASP:OD1	2.30	0.49
10:T:346:TRP:HB3	10:T:468:TYR:HB3	1.95	0.49
8:N:49:VAL:HG13	8:N:61:ILE:HG12	1.93	0.49
9:R:191:TYR:HA	9:R:216:PRO:HA	1.94	0.49
9:R:69:ILE:HD11	9:R:90:ILE:HG21	1.95	0.49
9:R:186:ILE:HB	9:R:198:TRP:HB2	1.95	0.48
11:O:3:ILE:HG22	11:O:65:SER:H	1.78	0.48
8:N:132:PRO:HB2	8:N:145:LEU:HD12	1.96	0.48
10:T:294:ARG:HB2	10:T:316:VAL:HG23	1.95	0.48
8:N:240:GLU:OE2	11:O:72:ARG:NH2	2.40	0.48
9:R:121:CYS:SG	9:R:124:THR:OG1	2.73	0.47
8:N:88:ASN:HB3	8:N:106:PHE:H	1.80	0.46
7:K:3765:ARG:HH22	9:R:91:SER:HB3	1.80	0.46
9:R:111:LEU:N	9:R:125:LEU:O	2.43	0.46
2:F:47:SER:OG	2:F:48:GLY:N	2.49	0.46
4:H:87:THR:OG1	4:H:90:GLU:OE1	2.30	0.46
4:D:69:ARG:HB3	4:D:98:LEU:HD11	1.98	0.46
11:O:7:THR:HG22	11:O:69:LEU:HB3	1.97	0.46
11:O:30:ILE:HA	11:O:33:LYS:HG2	1.97	0.46
7:K:3814:LEU:O	7:K:3819:ARG:NH1	2.49	0.45
3:C:79:ILE:HG12	3:C:82:HIS:CE1	2.51	0.45
8:N:36:GLY:O	8:N:304:HIS:NE2	2.49	0.45
11:O:41:GLN:HG2	11:O:69:LEU:HD11	1.98	0.45
8:N:309:ILE:HG23	8:N:320:ILE:HG23	1.98	0.45
9:R:279:GLU:HA	9:R:303:VAL:HG13	1.98	0.45
1:A:94:GLU:OE2	3:G:104:GLN:NE2	2.49	0.45
8:N:30:CYS:HB2	8:N:39:LEU:HD11	1.99	0.45
4:D:27:ARG:NH2	5:I:105:DT:OP1	2.50	0.45
1:E:73:GLU:OE1	2:F:25:ASN:ND2	2.48	0.45
6:J:89:DT:H2 ⁷	6:J:90:DA:C8	2.52	0.44
8:N:170:ASN:HD21	8:N:174:LYS:HB3	1.80	0.44
9:R:190:SER:OG	9:R:191:TYR:N	2.49	0.44
2:B:98:TYR:OH	4:H:65:ASP:OD2	2.24	0.44
8:N:347:GLU:HG2	8:N:348:ARG:HG2	2.00	0.44
8:N:238:GLU:O	11:O:42:ARG:NH2	2.48	0.44
4:D:87:THR:OG1	4:D:90:GLU:OE1	2.34	0.44
7:K:3838:ILE:O	7:K:3958:ASN:ND2	2.50	0.43
7:K:3905:ILE:O	7:K:3944:TYR:OH	2.28	0.43
7:K:3875:TYR:HA	7:K:3878:LYS:HB2	1.99	0.43
9:R:238:LEU:HB2	9:R:252:TYR:HD2	1.83	0.43

Continued on next page...

Continued from previous page...

Atom-1	Atom-2	Interatomic distance (Å)	Clash overlap (Å)
9:R:192:ASP:OD1	9:R:192:ASP:N	2.51	0.43
8:N:109:PRO:HG2	8:N:128:MET:HB3	2.01	0.42
7:K:3907:HIS:CE1	7:K:3944:TYR:H	2.37	0.42
9:R:303:VAL:HB	9:R:321:LEU:HD12	2.02	0.42
8:N:95:VAL:HG23	8:N:96:LEU:HD22	2.01	0.42
8:N:350:SER:HA	10:T:343:ARG:HH21	1.85	0.42
1:A:40:ARG:HH22	6:J:82:DG:H21	1.68	0.42
4:D:102:GLU:OE2	4:D:106:HIS:NE2	2.52	0.42
8:N:113:VAL:HG12	8:N:125:VAL:HG22	2.01	0.42
9:R:223:SER:N	9:R:228:TYR:O	2.48	0.42
4:D:39:TYR:OH	4:D:43:LYS:NZ	2.40	0.42
5:I:92:DC:H42	6:J:56:DG:H1	1.68	0.41
5:I:129:DT:H2''	5:I:130:DC:C5	2.55	0.41
10:T:367:ARG:HG2	10:T:369:LYS:H	1.84	0.41
7:K:3886:ARG:HA	7:K:3892:VAL:HA	2.02	0.41
9:R:96:SER:HB3	9:R:101:LEU:HB2	2.01	0.41
2:B:47:SER:OG	2:B:48:GLY:N	2.52	0.41
10:T:317:ARG:HD2	10:T:469:PHE:HB2	2.02	0.41
4:D:65:ASP:OD2	2:F:98:TYR:OH	2.30	0.41
6:J:63:DC:H2''	6:J:64:DG:H5''	2.02	0.41
6:J:68:DG:H2''	6:J:69:DG:C8	2.55	0.41
5:I:68:DT:H2''	5:I:69:DA:N7	2.35	0.41
5:I:27:DT:H2''	5:I:28:DC:C6	2.55	0.41
9:R:199:ASP:OD2	9:R:202:SER:N	2.45	0.41
7:K:3857:GLU:OE2	7:K:3925:HIS:ND1	2.54	0.41
7:K:3864:ARG:HG2	7:K:3891:GLU:HG2	2.02	0.41
7:K:3898:HIS:CD2	8:N:337:LYS:HB2	2.56	0.41
8:N:15:GLU:HA	8:N:288:LYS:HE2	2.03	0.41
9:R:113:ILE:HD12	9:R:123:LYS:HB2	2.03	0.41
3:C:106:GLY:HA3	1:E:58:THR:HG22	2.03	0.40
8:N:89:ILE:HG23	8:N:103:ARG:HG3	2.03	0.40
9:R:275:VAL:HG22	9:R:285:ILE:HG12	2.02	0.40
4:D:33:SER:OG	4:D:34:TYR:N	2.55	0.40
8:N:24:ILE:HD13	8:N:49:VAL:HG11	2.03	0.40
10:T:398:LEU:HD21	10:T:463:ILE:HD11	2.03	0.40
9:R:51:VAL:HG12	9:R:62:SER:HA	2.04	0.40
10:T:299:LYS:HB2	10:T:308:VAL:HB	2.02	0.40

There are no symmetry-related clashes.

5.3 Torsion angles [i](#)

5.3.1 Protein backbone [i](#)

In the following table, the Percentiles column shows the percent Ramachandran outliers of the chain as a percentile score with respect to all PDB entries followed by that with respect to all EM entries.

The Analysed column shows the number of residues for which the backbone conformation was analysed, and the total number of residues.

Mol	Chain	Analysed	Favoured	Allowed	Outliers	Percentiles	
1	A	95/135 (70%)	93 (98%)	2 (2%)	0	100	100
1	E	95/135 (70%)	93 (98%)	2 (2%)	0	100	100
2	B	78/102 (76%)	72 (92%)	6 (8%)	0	100	100
2	F	76/102 (74%)	73 (96%)	3 (4%)	0	100	100
3	C	105/129 (81%)	102 (97%)	3 (3%)	0	100	100
3	G	103/129 (80%)	96 (93%)	7 (7%)	0	100	100
4	D	92/122 (75%)	91 (99%)	1 (1%)	0	100	100
4	H	93/122 (76%)	91 (98%)	2 (2%)	0	100	100
7	K	173/216 (80%)	150 (87%)	23 (13%)	0	100	100
8	N	348/538 (65%)	315 (90%)	33 (10%)	0	100	100
9	R	298/334 (89%)	278 (93%)	20 (7%)	0	100	100
10	T	172/534 (32%)	161 (94%)	11 (6%)	0	100	100
11	O	74/76 (97%)	68 (92%)	6 (8%)	0	100	100
All	All	1802/2674 (67%)	1683 (93%)	119 (7%)	0	100	100

There are no Ramachandran outliers to report.

5.3.2 Protein sidechains [i](#)

In the following table, the Percentiles column shows the percent sidechain outliers of the chain as a percentile score with respect to all PDB entries followed by that with respect to all EM entries.

The Analysed column shows the number of residues for which the sidechain conformation was analysed, and the total number of residues.

Mol	Chain	Analysed	Rotameric	Outliers	Percentiles	
1	A	85/110 (77%)	83 (98%)	2 (2%)	49	77

Continued on next page...

Continued from previous page...

Mol	Chain	Analysed	Rotameric	Outliers	Percentiles	
1	E	85/110 (77%)	83 (98%)	2 (2%)	49	77
2	B	66/78 (85%)	66 (100%)	0	100	100
2	F	64/78 (82%)	64 (100%)	0	100	100
3	C	84/101 (83%)	84 (100%)	0	100	100
3	G	83/101 (82%)	82 (99%)	1 (1%)	71	88
4	D	81/102 (79%)	81 (100%)	0	100	100
4	H	81/102 (79%)	81 (100%)	0	100	100
7	K	151/189 (80%)	150 (99%)	1 (1%)	84	94
8	N	309/462 (67%)	306 (99%)	3 (1%)	76	90
9	R	262/291 (90%)	262 (100%)	0	100	100
10	T	149/460 (32%)	148 (99%)	1 (1%)	84	94
11	O	69/69 (100%)	69 (100%)	0	100	100
All	All	1569/2253 (70%)	1559 (99%)	10 (1%)	86	94

All (10) residues with a non-rotameric sidechain are listed below:

Mol	Chain	Res	Type
1	A	53	ARG
1	A	129	ARG
1	E	53	ARG
1	E	129	ARG
3	G	110	ASN
7	K	3886	ARG
8	N	34	ARG
8	N	307	ARG
8	N	328	ASN
10	T	294	ARG

Sometimes sidechains can be flipped to improve hydrogen bonding and reduce clashes. All (9) such sidechains are listed below:

Mol	Chain	Res	Type
1	A	68	GLN
2	B	75	HIS
3	C	73	ASN
1	E	68	GLN
2	F	75	HIS
3	G	110	ASN

Continued on next page...

Continued from previous page...

Mol	Chain	Res	Type
8	N	92	GLN
8	N	328	ASN
10	T	376	GLN

5.3.3 RNA [i](#)

There are no RNA molecules in this entry.

5.4 Non-standard residues in protein, DNA, RNA chains [i](#)

There are no non-standard protein/DNA/RNA residues in this entry.

5.5 Carbohydrates [i](#)

There are no monosaccharides in this entry.

5.6 Ligand geometry [i](#)

Of 4 ligands modelled in this entry, 1 is monoatomic - leaving 3 for Mogul analysis.

In the following table, the Counts columns list the number of bonds (or angles) for which Mogul statistics could be retrieved, the number of bonds (or angles) that are observed in the model and the number of bonds (or angles) that are defined in the Chemical Component Dictionary. The Link column lists molecule types, if any, to which the group is linked. The Z score for a bond length (or angle) is the number of standard deviations the observed value is removed from the expected value. A bond length (or angle) with $|Z| > 2$ is considered an outlier worth inspection. RMSZ is the root-mean-square of all Z scores of the bond lengths (or angles).

Mol	Type	Chain	Res	Link	Bond lengths			Bond angles		
					Counts	RMSZ	# Z > 2	Counts	RMSZ	# Z > 2
15	GLN	K	4004	14	7,8,9	0.40	0	4,9,11	0.06	0
12	SAH	K	4001	-	24,28,28	1.20	3 (12%)	25,40,40	1.63	5 (20%)
14	LYS	K	4003	15	7,8,9	0.51	0	3,8,10	0.57	0

In the following table, the Chirals column lists the number of chiral outliers, the number of chiral centers analysed, the number of these observed in the model and the number defined in the Chemical Component Dictionary. Similar counts are reported in the Torsion and Rings columns. '-' means no outliers of that kind were identified.

Mol	Type	Chain	Res	Link	Chirals	Torsions	Rings
15	GLN	K	4004	14	-	0/6/7/9	-
12	SAH	K	4001	-	-	8/11/31/31	0/3/3/3
14	LYS	K	4003	15	-	0/6/7/9	-

All (3) bond length outliers are listed below:

Mol	Chain	Res	Type	Atoms	Z	Observed(Å)	Ideal(Å)
12	K	4001	SAH	C2-N3	3.91	1.38	1.32
12	K	4001	SAH	C2-N1	2.34	1.38	1.33
12	K	4001	SAH	OXT-C	-2.01	1.24	1.30

All (5) bond angle outliers are listed below:

Mol	Chain	Res	Type	Atoms	Z	Observed(°)	Ideal(°)
12	K	4001	SAH	N3-C2-N1	-5.46	120.14	128.68
12	K	4001	SAH	C3'-C2'-C1'	2.80	105.19	100.98
12	K	4001	SAH	OXT-C-O	-2.76	117.82	124.09
12	K	4001	SAH	C5'-SD-CG	-2.49	94.81	102.27
12	K	4001	SAH	OXT-C-CA	2.19	120.84	113.38

There are no chirality outliers.

All (8) torsion outliers are listed below:

Mol	Chain	Res	Type	Atoms
12	K	4001	SAH	C-CA-CB-CG
12	K	4001	SAH	O-C-CA-N
12	K	4001	SAH	O4'-C4'-C5'-SD
12	K	4001	SAH	C3'-C4'-C5'-SD
12	K	4001	SAH	OXT-C-CA-N
12	K	4001	SAH	N-CA-CB-CG
12	K	4001	SAH	O-C-CA-CB
12	K	4001	SAH	OXT-C-CA-CB

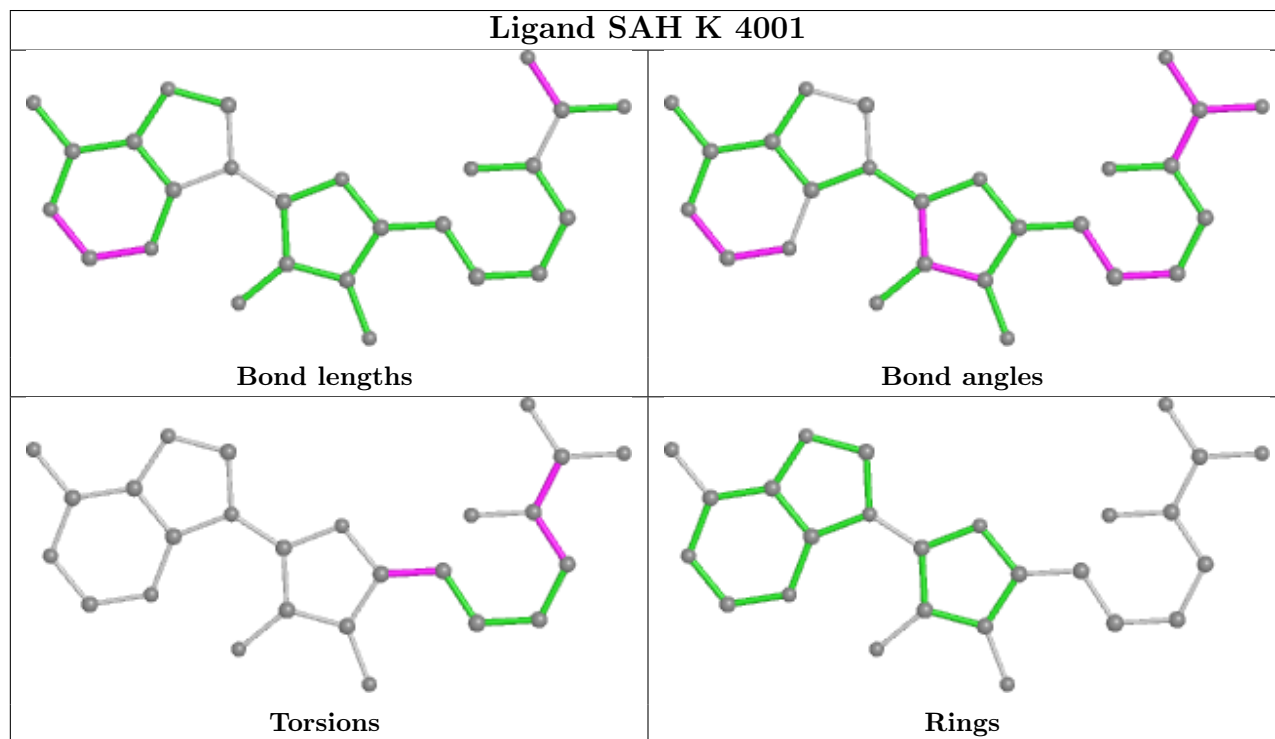
There are no ring outliers.

1 monomer is involved in 1 short contact:

Mol	Chain	Res	Type	Clashes	Symm-Clashes
12	K	4001	SAH	1	0

The following is a two-dimensional graphical depiction of Mogul quality analysis of bond lengths, bond angles, torsion angles, and ring geometry for all instances of the Ligand of Interest. In addition, ligands with molecular weight > 250 and outliers as shown on the validation Tables will

also be included. For torsion angles, if less than 5% of the Mogul distribution of torsion angles is within 10 degrees of the torsion angle in question, then that torsion angle is considered an outlier. Any bond that is central to one or more torsion angles identified as an outlier by Mogul will be highlighted in the graph. For rings, the root-mean-square deviation (RMSD) between the ring in question and similar rings identified by Mogul is calculated over all ring torsion angles. If the average RMSD is greater than 60 degrees and the minimal RMSD between the ring in question and any Mogul-identified rings is also greater than 60 degrees, then that ring is considered an outlier. The outliers are highlighted in purple. The color gray indicates Mogul did not find sufficient equivalents in the CSD to analyse the geometry.



5.7 Other polymers [i](#)

There are no such residues in this entry.

5.8 Polymer linkage issues [i](#)

There are no chain breaks in this entry.

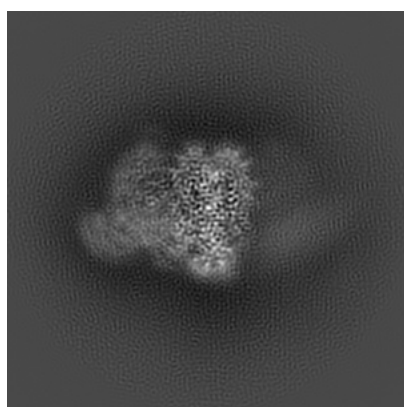
6 Map visualisation [i](#)

This section contains visualisations of the EMDB entry EMD-9998. These allow visual inspection of the internal detail of the map and identification of artifacts.

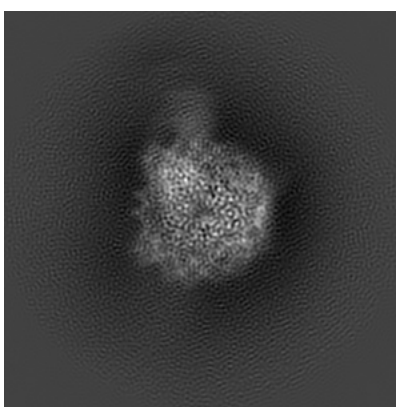
No raw map or half-maps were deposited for this entry and therefore no images, graphs, etc. pertaining to the raw map can be shown.

6.1 Orthogonal projections [i](#)

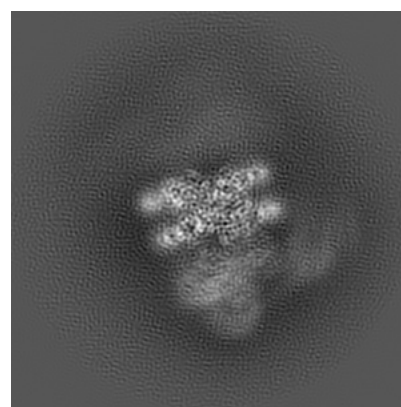
6.1.1 Primary map



X



Y

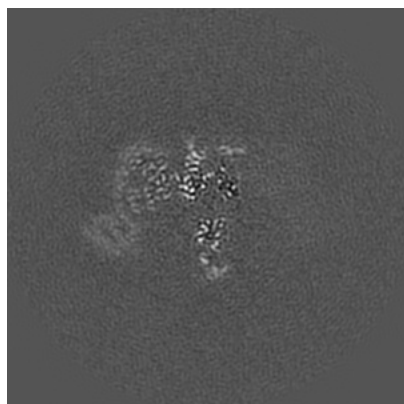


Z

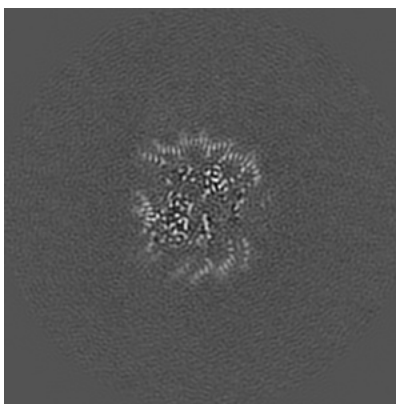
The images above show the map projected in three orthogonal directions.

6.2 Central slices [i](#)

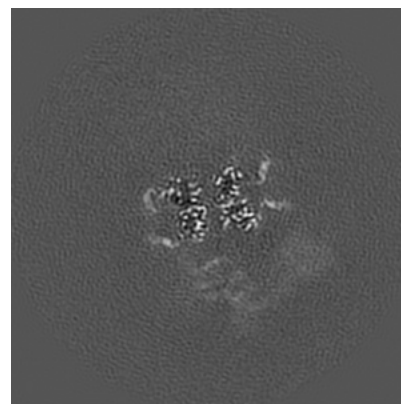
6.2.1 Primary map



X Index: 135



Y Index: 135

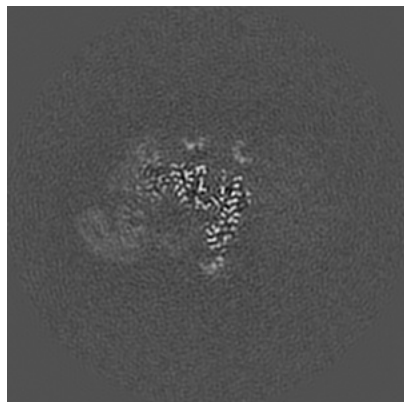


Z Index: 135

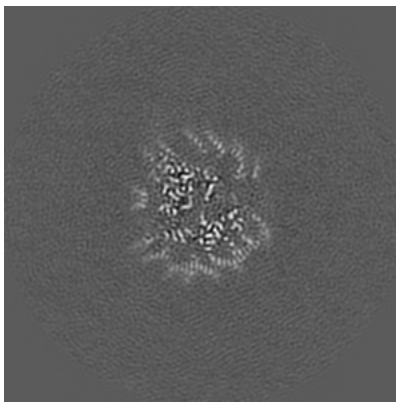
The images above show central slices of the map in three orthogonal directions.

6.3 Largest variance slices [i](#)

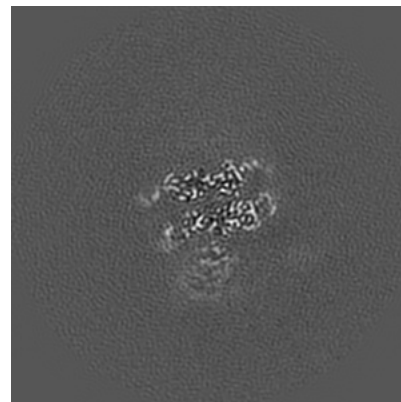
6.3.1 Primary map



X Index: 143



Y Index: 140

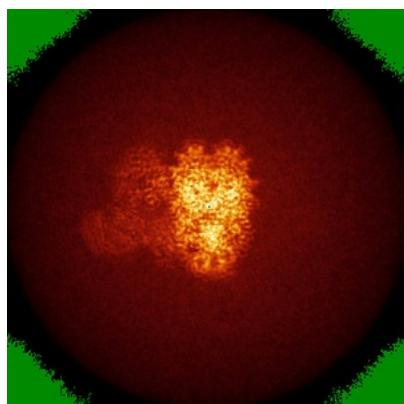


Z Index: 144

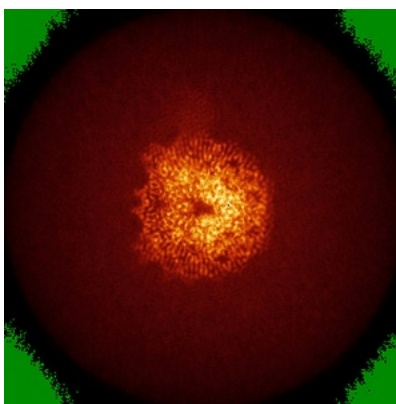
The images above show the largest variance slices of the map in three orthogonal directions.

6.4 Orthogonal standard-deviation projections (False-color) [i](#)

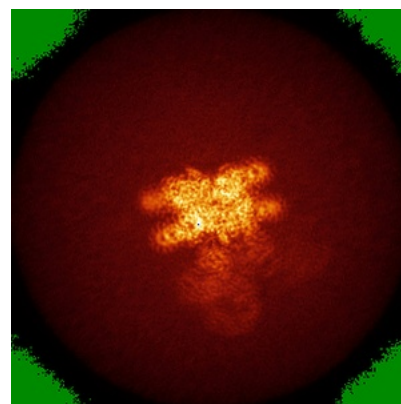
6.4.1 Primary map



X



Y

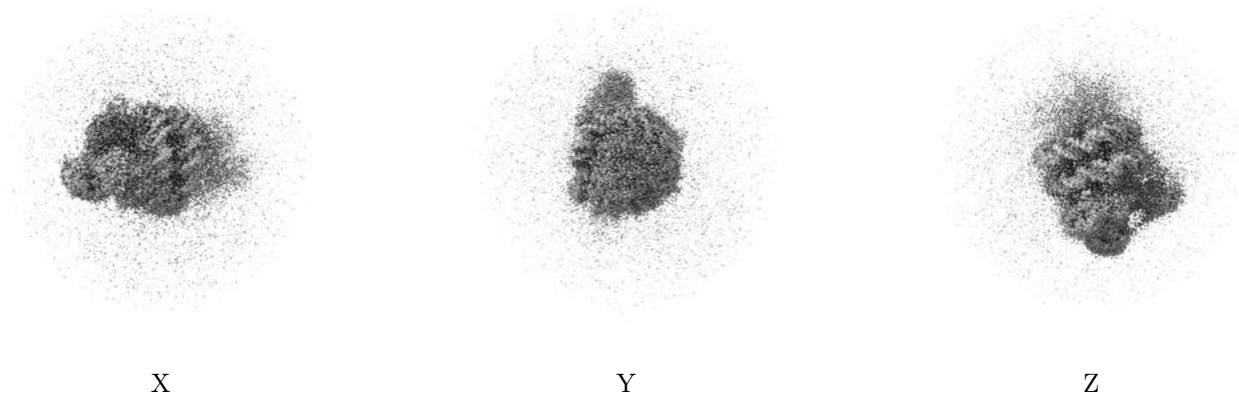


Z

The images above show the map standard deviation projections with false color in three orthogonal directions. Minimum values are shown in green, max in blue, and dark to light orange shades represent small to large values respectively.

6.5 Orthogonal surface views [i](#)

6.5.1 Primary map



The images above show the 3D surface view of the map at the recommended contour level 0.012. These images, in conjunction with the slice images, may facilitate assessment of whether an appropriate contour level has been provided.

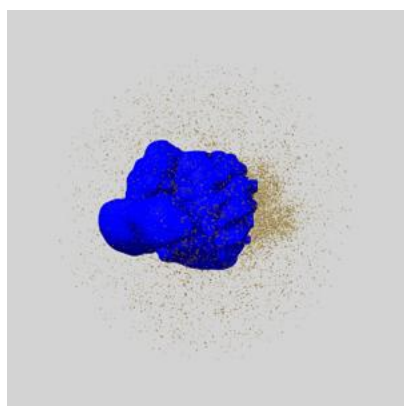
6.6 Mask visualisation [i](#)

This section shows the 3D surface view of the primary map at 50% transparency overlaid with the specified mask at 0% transparency

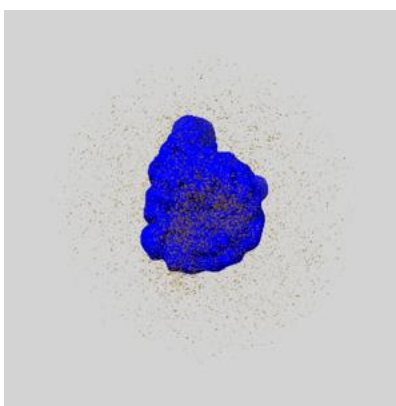
A mask typically either:

- Encompasses the whole structure
- Separates out a domain, a functional unit, a monomer or an area of interest from a larger structure

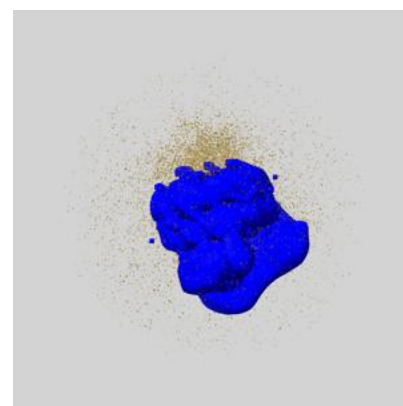
6.6.1 emd_9998_msk_1.map [i](#)



X



Y

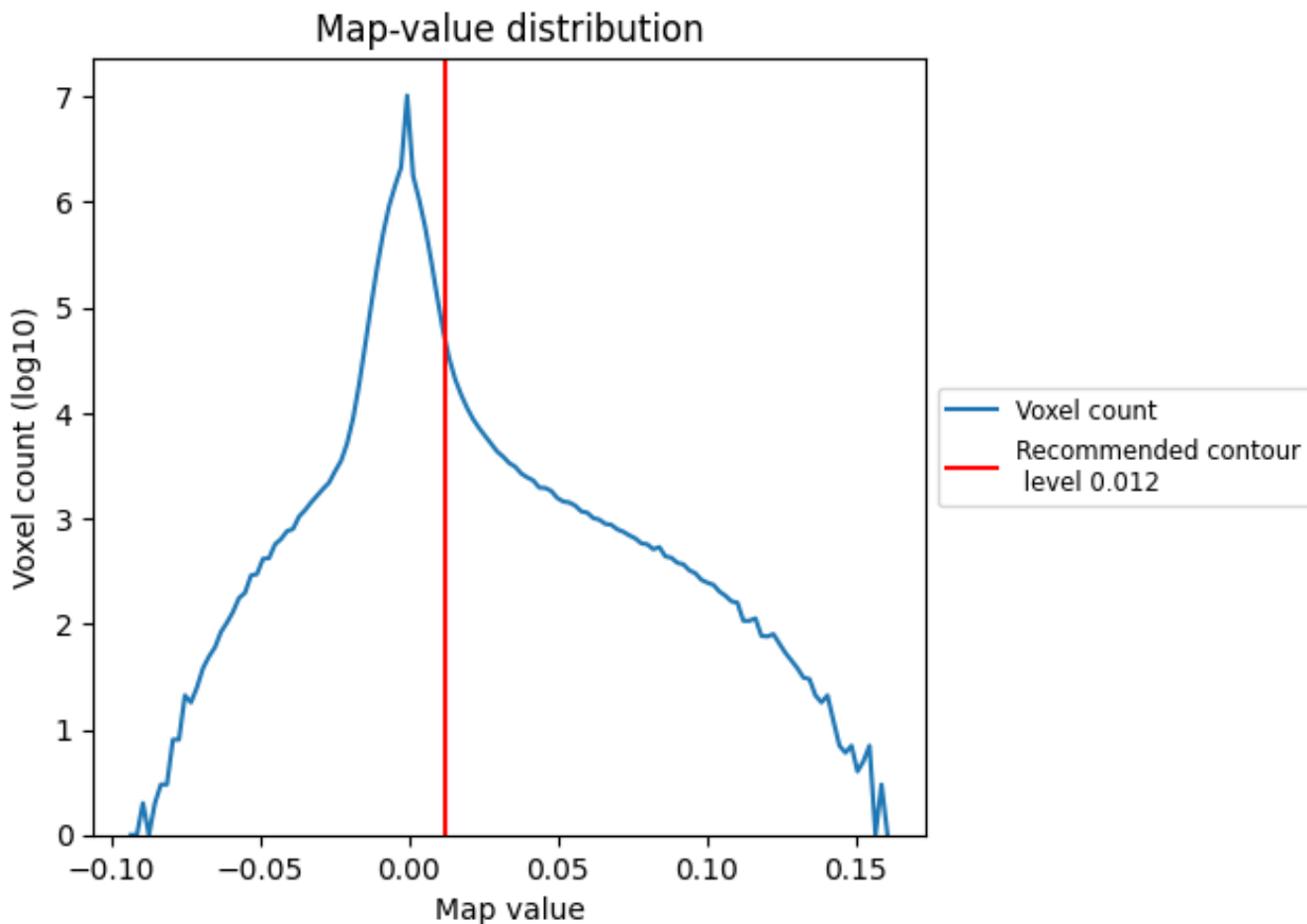


Z

7 Map analysis [i](#)

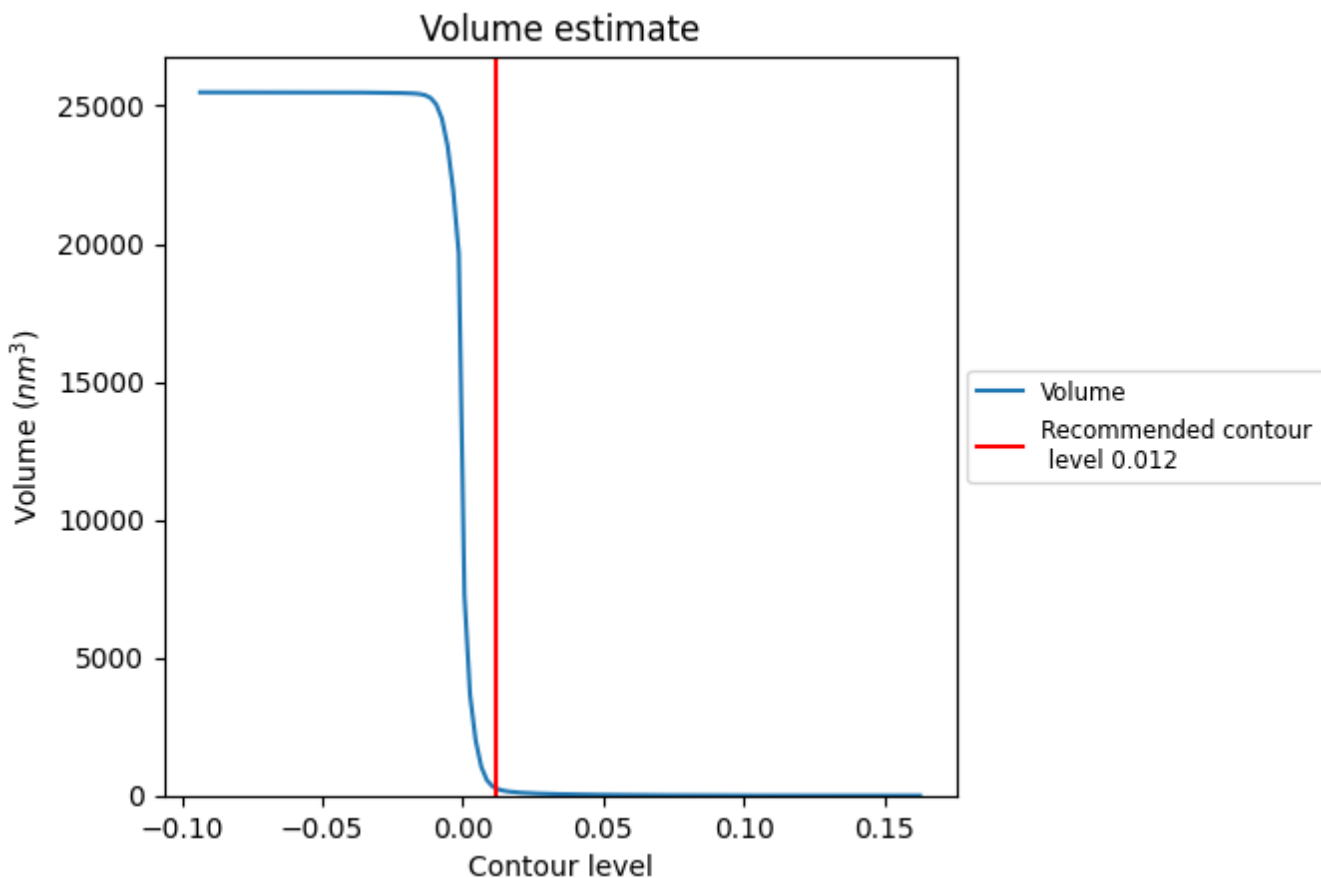
This section contains the results of statistical analysis of the map.

7.1 Map-value distribution [i](#)



The map-value distribution is plotted in 128 intervals along the x-axis. The y-axis is logarithmic. A spike in this graph at zero usually indicates that the volume has been masked.

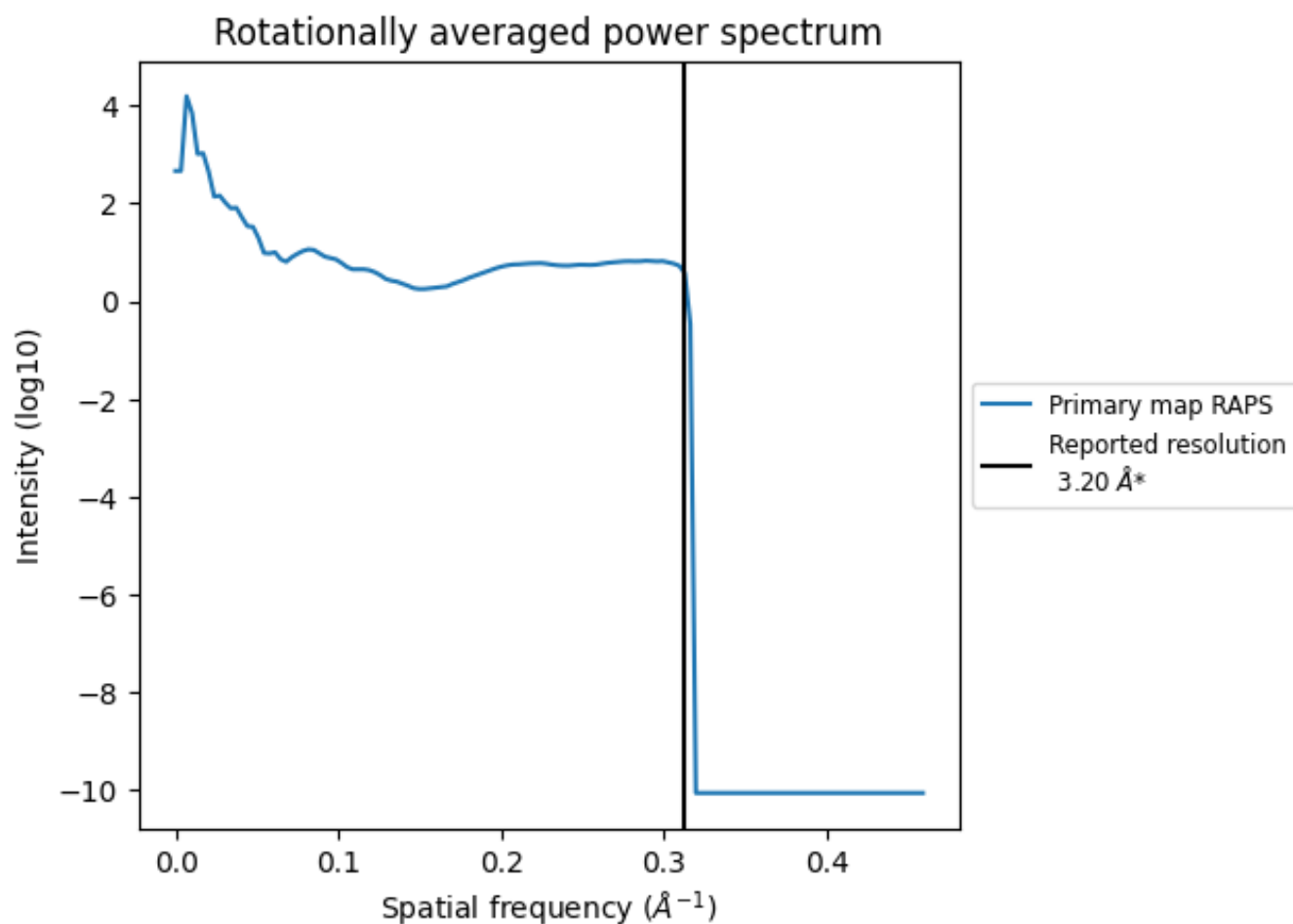
7.2 Volume estimate [i](#)



The volume at the recommended contour level is 257 nm³; this corresponds to an approximate mass of 232 kDa.

The volume estimate graph shows how the enclosed volume varies with the contour level. The recommended contour level is shown as a vertical line and the intersection between the line and the curve gives the volume of the enclosed surface at the given level.

7.3 Rotationally averaged power spectrum [\(i\)](#)

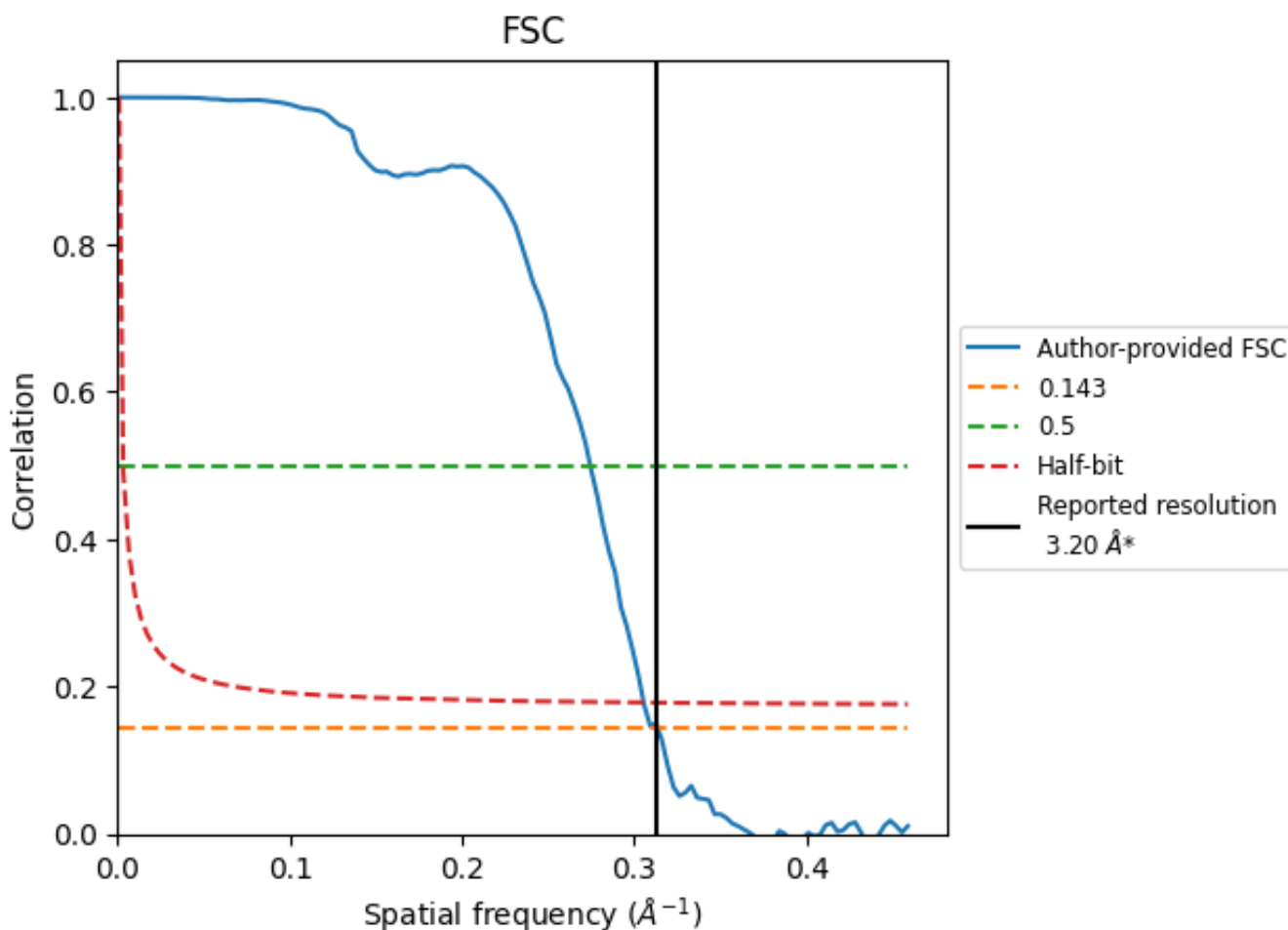


*Reported resolution corresponds to spatial frequency of 0.312 Å⁻¹

8 Fourier-Shell correlation [\(i\)](#)

Fourier-Shell Correlation (FSC) is the most commonly used method to estimate the resolution of single-particle and subtomogram-averaged maps. The shape of the curve depends on the imposed symmetry, mask and whether or not the two 3D reconstructions used were processed from a common reference. The reported resolution is shown as a black line. A curve is displayed for the half-bit criterion in addition to lines showing the 0.143 gold standard cut-off and 0.5 cut-off.

8.1 FSC [\(i\)](#)



*Reported resolution corresponds to spatial frequency of 0.312 Å⁻¹

8.2 Resolution estimates [i](#)

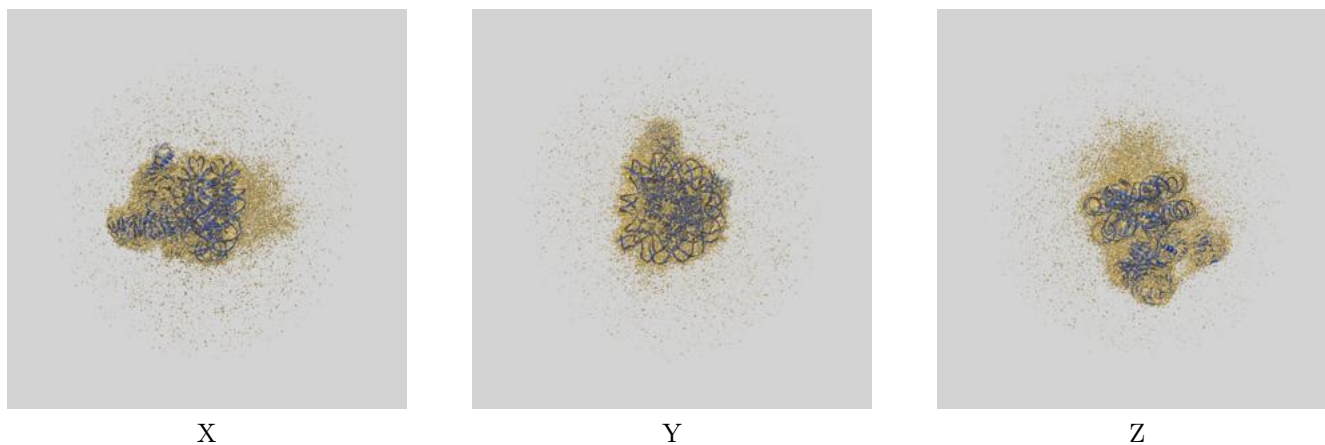
Resolution estimate (Å)	Estimation criterion (FSC cut-off)		
	0.143	0.5	Half-bit
Reported by author	3.20	-	-
Author-provided FSC curve	3.19	3.64	3.27
Unmasked-calculated*	-	-	-

*Resolution estimate based on FSC curve calculated by comparison of deposited half-maps.

9 Map-model fit [i](#)

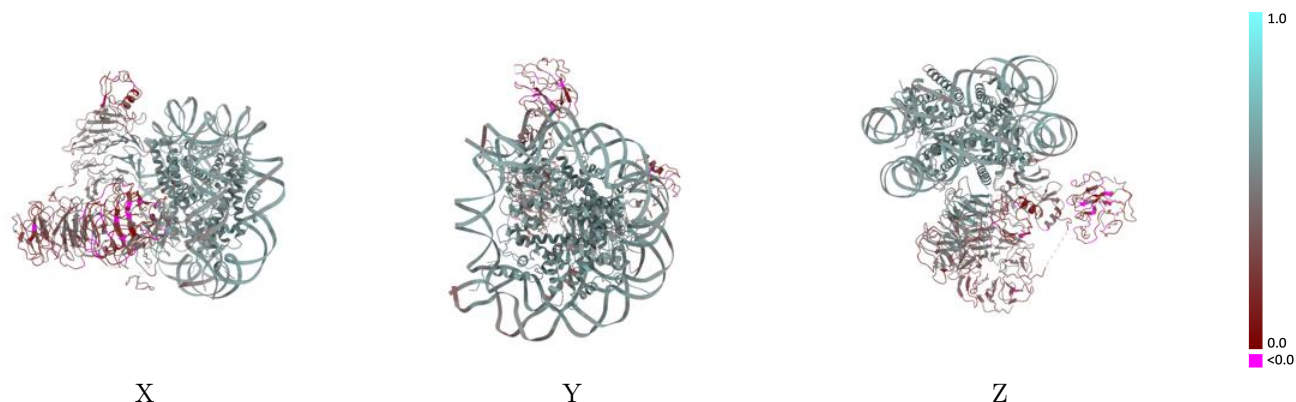
This section contains information regarding the fit between EMDB map EMD-9998 and PDB model 6KIU. Per-residue inclusion information can be found in section 3 on page 8.

9.1 Map-model overlay [i](#)



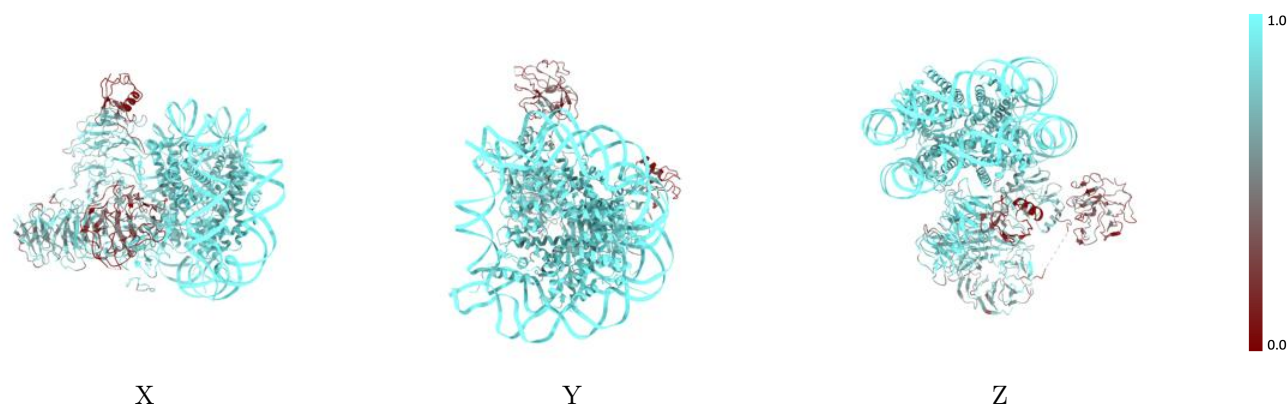
The images above show the 3D surface view of the map at the recommended contour level 0.012 at 50% transparency in yellow overlaid with a ribbon representation of the model coloured in blue. These images allow for the visual assessment of the quality of fit between the atomic model and the map.

9.2 Q-score mapped to coordinate model [\(i\)](#)



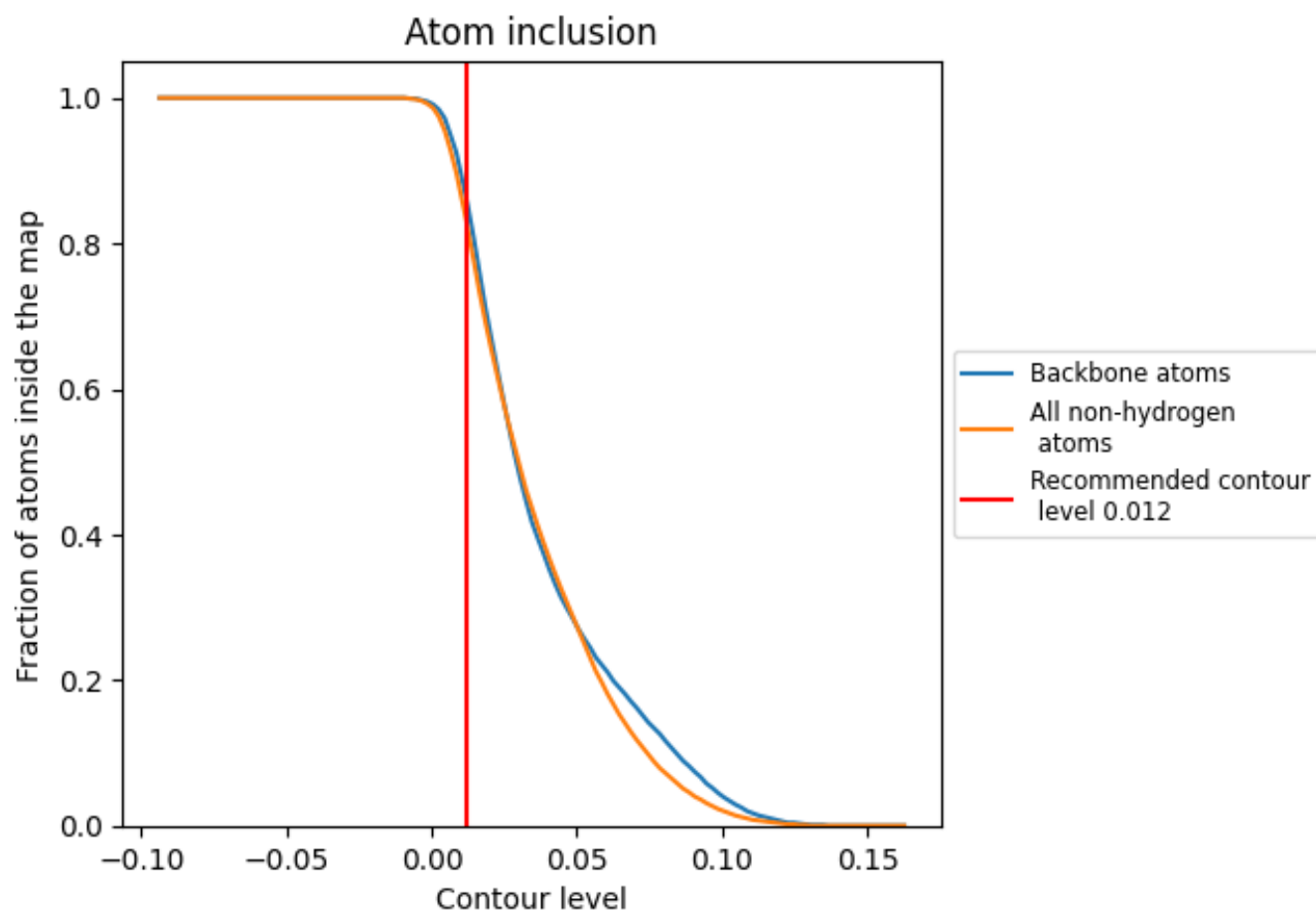
The images above show the model with each residue coloured according to its Q-score. This shows their resolvability in the map with higher Q-score values reflecting better resolvability. Please note: Q-score is calculating the resolvability of atoms, and thus high values are only expected at resolutions at which atoms can be resolved. Low Q-score values may therefore be expected for many entries.

9.3 Atom inclusion mapped to coordinate model [\(i\)](#)



The images above show the model with each residue coloured according to its atom inclusion. This shows to what extent they are inside the map at the recommended contour level (0.012).



















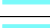













9.4 Atom inclusion [i](#)



At the recommended contour level, 86% of all backbone atoms, 83% of all non-hydrogen atoms, are inside the map.

9.5 Map-model fit summary

The table lists the average atom inclusion at the recommended contour level (0.012) and Q-score for the entire model and for each chain.

Chain	Atom inclusion	Q-score
All	 0.8310	 0.4610
A	 0.9260	 0.5610
B	 0.9240	 0.5590
C	 0.9370	 0.5780
D	 0.9460	 0.5590
E	 0.9250	 0.5570
F	 0.9620	 0.5830
G	 0.9410	 0.5590
H	 0.9370	 0.5530
I	 0.9840	 0.5470
J	 0.9830	 0.5490
K	 0.8140	 0.4110
N	 0.7970	 0.4260
O	 0.1950	 0.2180
R	 0.7110	 0.2970
T	 0.2830	 0.1480

