



Full wwPDB EM Validation Report ⓘ

Nov 20, 2022 – 11:08 am GMT

PDB ID : 6IAW
EMDB ID : EMD-4440
Title : Structure of head fiber and inner core protein gp22 of native bacteriophage P68
Authors : Hrebik, D.; Skubnik, K.; Fuzik, T.; Plevka, P.
Deposited on : 2018-11-27
Resolution : 3.80 Å (reported)
Based on initial model : 6IAT

This is a Full wwPDB EM Validation Report for a publicly released PDB entry.

We welcome your comments at validation@mail.wwpdb.org

A user guide is available at

<https://www.wwpdb.org/validation/2017/EMValidationReportHelp>

with specific help available everywhere you see the ⓘ symbol.

The types of validation reports are described at

<http://www.wwpdb.org/validation/2017/FAQs#types>.

The following versions of software and data (see [references ⓘ](#)) were used in the production of this report:

EMDB validation analysis : 0.0.1.dev43
MolProbity : 4.02b-467
Percentile statistics : 20191225.v01 (using entries in the PDB archive December 25th 2019)
MapQ : 1.9.9
Ideal geometry (proteins) : Engh & Huber (2001)
Ideal geometry (DNA, RNA) : Parkinson et al. (1996)
Validation Pipeline (wwPDB-VP) : 2.31.2

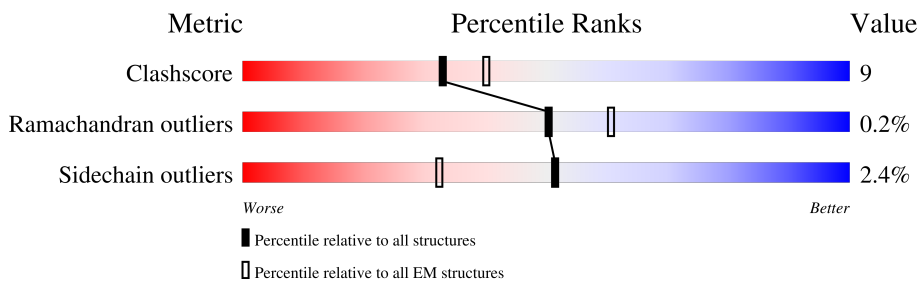
1 Overall quality at a glance i

The following experimental techniques were used to determine the structure:

ELECTRON MICROSCOPY

The reported resolution of this entry is 3.80 Å.

Percentile scores (ranging between 0-100) for global validation metrics of the entry are shown in the following graphic. The table shows the number of entries on which the scores are based.



Metric	Whole archive (#Entries)	EM structures (#Entries)
Clashscore	158937	4297
Ramachandran outliers	154571	4023
Sidechain outliers	154315	3826

The table below summarises the geometric issues observed across the polymeric chains and their fit to the map. The red, orange, yellow and green segments of the bar indicate the fraction of residues that contain outliers for ≥ 3 , 2, 1 and 0 types of geometric quality criteria respectively. A grey segment represents the fraction of residues that are not modelled. The numeric value for each fraction is indicated below the corresponding segment, with a dot representing fractions $\leq 5\%$. The upper red bar (where present) indicates the fraction of residues that have poor fit to the EM map (all-atom inclusion $< 40\%$). The numeric value is given above the bar.

Mol	Chain	Length	Quality of chain
1	A	408	
1	B	408	
1	C	408	
1	M	408	
1	N	408	
1	O	408	
2	D	60	
2	E	60	

Continued on next page...

Continued from previous page...

Mol	Chain	Length	Quality of chain
2	I	60	
2	J	60	
2	Q	60	
2	S	60	
3	H	67	
3	K	67	
3	L	67	
4	X	41	
4	Y	41	
4	Z	41	

2 Entry composition [i](#)

There are 4 unique types of molecules in this entry. The entry contains 21929 atoms, of which 0 are hydrogens and 0 are deuteriums.

In the tables below, the AltConf column contains the number of residues with at least one atom in alternate conformation and the Trace column contains the number of residues modelled with at most 2 atoms.

- Molecule 1 is a protein called Major head protein.

Mol	Chain	Residues	Atoms					AltConf	Trace
			Total	C	N	O	S		
1	A	393	Total 3190	C 2050	N 520	O 612	S 8	0	0
1	B	386	Total 3135	C 2019	N 510	O 598	S 8	0	0
1	C	386	Total 3135	C 2019	N 510	O 598	S 8	0	0
1	M	338	Total 2738	C 1759	N 447	O 525	S 7	0	0
1	N	386	Total 3135	C 2019	N 510	O 598	S 8	0	0
1	O	386	Total 3135	C 2019	N 510	O 598	S 8	0	0

- Molecule 2 is a protein called Arstotzka protein.

Mol	Chain	Residues	Atoms					AltConf	Trace
			Total	C	N	O	S		
2	J	55	Total 437	C 260	N 77	O 95	S 5	0	0
2	I	55	Total 437	C 260	N 77	O 95	S 5	0	0
2	D	30	Total 237	C 143	N 39	O 54	S 1	0	0
2	E	54	Total 433	C 258	N 76	O 94	S 5	0	0
2	Q	55	Total 437	C 260	N 77	O 95	S 5	0	0
2	S	55	Total 437	C 260	N 77	O 95	S 5	0	0

- Molecule 3 is a protein called Head fiber.

Mol	Chain	Residues	Atoms				AltConf	Trace
			Total	C	N	O		
3	H	55	Total 275	C 165	N 55	O 55	0	0

Continued on next page...

Continued from previous page...

Mol	Chain	Residues	Atoms				AltConf	Trace
3	L	55	Total	C	N	O	0	0
			275	165	55	55		
3	K	55	Total	C	N	O	0	0
			275	165	55	55		

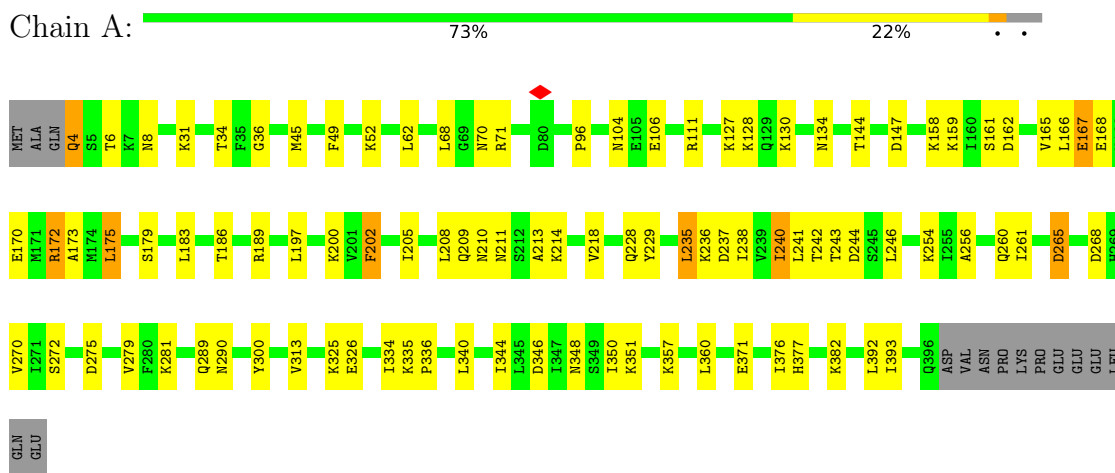
- Molecule 4 is a protein called inner core protein.

Mol	Chain	Residues	Atoms				AltConf	Trace
4	X	17	Total	C	N	O	0	0
			85	51	17	17		
4	Y	16	Total	C	N	O	0	0
			79	47	16	16		
4	Z	12	Total	C	N	O	0	0
			54	30	12	12		

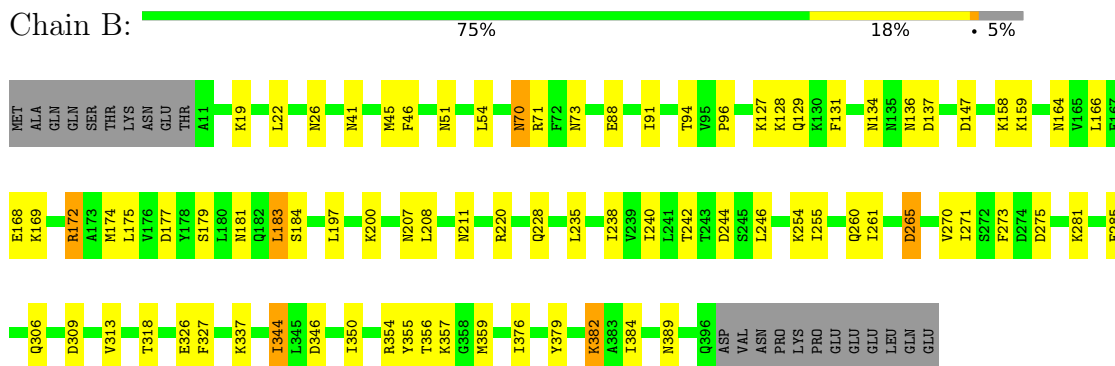
3 Residue-property plots

These plots are drawn for all protein, RNA, DNA and oligosaccharide chains in the entry. The first graphic for a chain summarises the proportions of the various outlier classes displayed in the second graphic. The second graphic shows the sequence view annotated by issues in geometry and atom inclusion in map density. Residues are color-coded according to the number of geometric quality criteria for which they contain at least one outlier: green = 0, yellow = 1, orange = 2 and red = 3 or more. A red diamond above a residue indicates a poor fit to the EM map for this residue (all-atom inclusion < 40%). Stretches of 2 or more consecutive residues without any outlier are shown as a green connector. Residues present in the sample, but not in the model, are shown in grey.

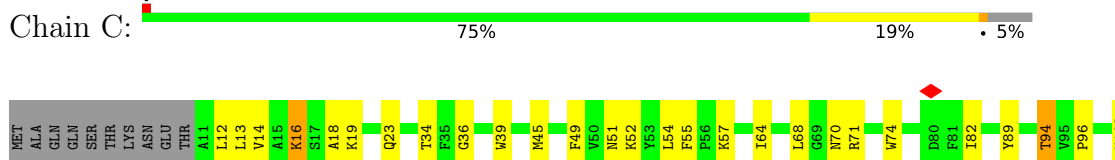
- Molecule 1: Major head protein

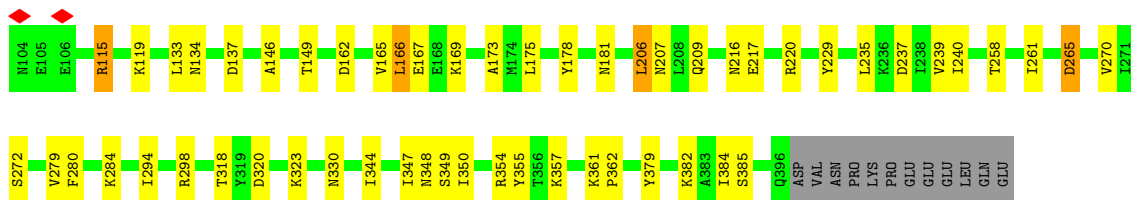


- Molecule 1: Major head protein

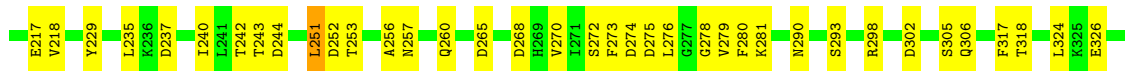
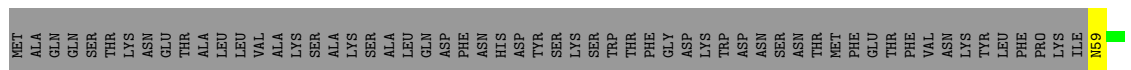


- Molecule 1: Major head protein

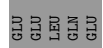




• Molecule 1: Major head protein

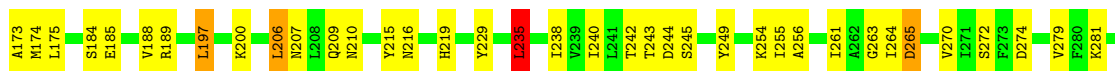


• Molecule 1: Major head protein



• Molecule 1: Major head protein

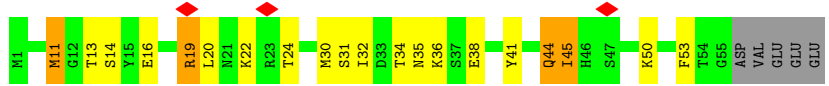




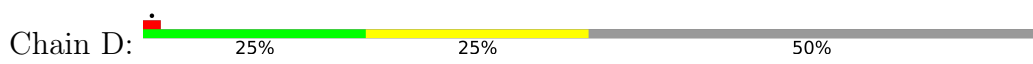
• Molecule 2: Arstotzka protein



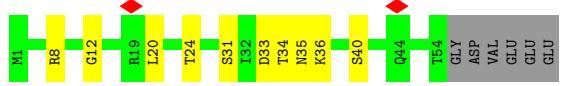
• Molecule 2: Arstotzka protein



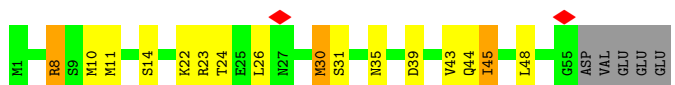
• Molecule 2: Arstotzka protein



• Molecule 2: Arstotzka protein

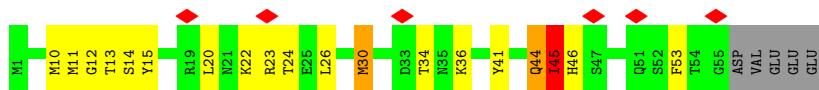


• Molecule 2: Arstotzka protein

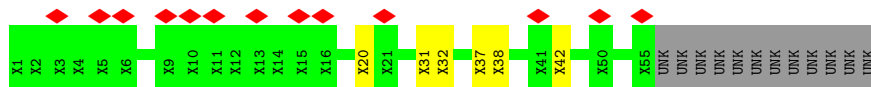
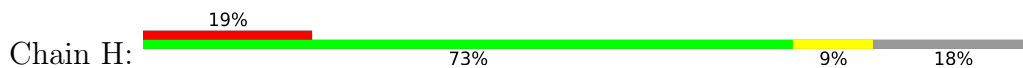


• Molecule 2: Arstotzka protein

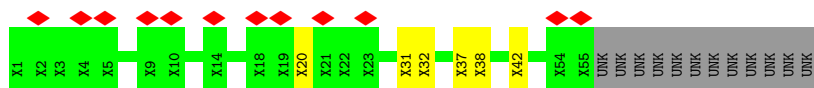




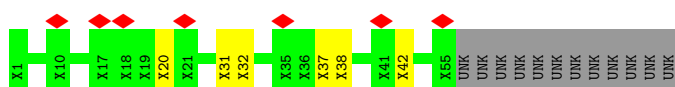
• Molecule 3: Head fiber



• Molecule 3: Head fiber



• Molecule 3: Head fiber



• Molecule 4: inner core protein



• Molecule 4: inner core protein



• Molecule 4: inner core protein



4 Experimental information

Property	Value	Source
EM reconstruction method	SINGLE PARTICLE	Depositor
Imposed symmetry	POINT, C5	Depositor
Number of particles used	28826	Depositor
Resolution determination method	FSC 0.143 CUT-OFF	Depositor
CTF correction method	PHASE FLIPPING AND AMPLITUDE CORRECTION	Depositor
Microscope	FEI TITAN KRIOS	Depositor
Voltage (kV)	300	Depositor
Electron dose ($e^-/\text{\AA}^2$)	21	Depositor
Minimum defocus (nm)	1.0	Depositor
Maximum defocus (nm)	3.0	Depositor
Magnification	75000	Depositor
Image detector	FEI FALCON II (4k x 4k)	Depositor
Maximum map value	9.957	Depositor
Minimum map value	-5.177	Depositor
Average map value	-0.000	Depositor
Map value standard deviation	0.660	Depositor
Recommended contour level	1.67	Depositor
Map size (Å)	212.59999, 212.59999, 212.59999	wwPDB
Map dimensions	200, 200, 200	wwPDB
Map angles (°)	90.0, 90.0, 90.0	wwPDB
Pixel spacing (Å)	1.063, 1.063, 1.063	Depositor

5 Model quality [i](#)

5.1 Standard geometry [i](#)

The Z score for a bond length (or angle) is the number of standard deviations the observed value is removed from the expected value. A bond length (or angle) with $|Z| > 5$ is considered an outlier worth inspection. RMSZ is the root-mean-square of all Z scores of the bond lengths (or angles).

Mol	Chain	Bond lengths		Bond angles	
		RMSZ	# Z >5	RMSZ	# Z >5
1	A	0.45	0/3257	0.69	3/4400 (0.1%)
1	B	0.43	0/3202	0.67	4/4326 (0.1%)
1	C	0.44	0/3202	0.66	2/4326 (0.0%)
1	M	0.44	0/2792	0.73	4/3771 (0.1%)
1	N	0.42	0/3202	0.70	4/4326 (0.1%)
1	O	0.43	0/3202	0.67	4/4326 (0.1%)
2	D	0.40	0/239	0.78	0/320
2	E	0.36	0/437	0.82	0/582
2	I	0.36	0/441	0.93	1/587 (0.2%)
2	J	0.37	0/441	0.71	0/587
2	Q	0.36	0/441	0.79	0/587
2	S	0.40	0/441	0.88	1/587 (0.2%)
All	All	0.43	0/21297	0.70	23/28725 (0.1%)

Chiral center outliers are detected by calculating the chiral volume of a chiral center and verifying if the center is modelled as a planar moiety or with the opposite hand. A planarity outlier is detected by checking planarity of atoms in a peptide group, atoms in a mainchain group or atoms of a sidechain that are expected to be planar.

Mol	Chain	#Chirality outliers	#Planarity outliers
1	A	0	2
1	C	0	2
1	M	0	1
1	N	0	1
1	O	0	1
2	I	0	2
2	J	0	3
2	Q	0	1
2	S	0	1
All	All	0	14

There are no bond length outliers.

All (23) bond angle outliers are listed below:

Mol	Chain	Res	Type	Atoms	Z	Observed(°)	Ideal(°)
1	B	183	LEU	CA-CB-CG	8.51	134.87	115.30
1	C	206	LEU	CA-CB-CG	7.85	133.36	115.30
1	O	206	LEU	CA-CB-CG	7.78	133.18	115.30
2	I	45	ILE	CG1-CB-CG2	-7.69	94.48	111.40
1	M	183	LEU	CA-CB-CG	6.83	131.00	115.30
2	S	45	ILE	CG1-CB-CG2	-6.62	96.85	111.40
1	N	261	ILE	CG1-CB-CG2	-6.39	97.34	111.40
1	B	344	ILE	CG1-CB-CG2	-5.81	98.61	111.40
1	A	235	LEU	CA-CB-CG	5.79	128.63	115.30
1	M	251	LEU	CA-CB-CG	5.73	128.47	115.30
1	N	345	LEU	CA-CB-CG	5.58	128.14	115.30
1	M	252	ASP	CB-CG-OD1	5.35	123.11	118.30
1	O	197	LEU	CA-CB-CG	5.26	127.41	115.30
1	B	265	ASP	CB-CG-OD2	5.25	123.02	118.30
1	N	265	ASP	CB-CG-OD2	5.24	123.01	118.30
1	B	235	LEU	CA-CB-CG	5.24	127.34	115.30
1	C	265	ASP	CB-CG-OD2	5.21	122.98	118.30
1	M	265	ASP	CB-CG-OD2	5.18	122.97	118.30
1	A	175	LEU	CA-CB-CG	5.18	127.21	115.30
1	O	265	ASP	CB-CG-OD2	5.17	122.96	118.30
1	A	265	ASP	CB-CG-OD2	5.17	122.95	118.30
1	N	109	LEU	CA-CB-CG	5.05	126.91	115.30
1	O	235	LEU	CA-CB-CG	5.01	126.81	115.30

There are no chirality outliers.

All (14) planarity outliers are listed below:

Mol	Chain	Res	Type	Group
1	A	183	LEU	Peptide
1	A	202	PHE	Peptide
1	C	206	LEU	Peptide
1	C	347	ILE	Peptide
2	I	11	MET	Peptide
2	I	44	GLN	Peptide
2	J	24	THR	Peptide
2	J	25	GLU	Peptide
2	J	45	ILE	Peptide
1	M	70	ASN	Peptide
1	N	345	LEU	Peptide
1	O	206	LEU	Peptide
2	Q	45	ILE	Peptide
2	S	44	GLN	Peptide

5.2 Too-close contacts [i](#)

In the following table, the Non-H and H(model) columns list the number of non-hydrogen atoms and hydrogen atoms in the chain respectively. The H(added) column lists the number of hydrogen atoms added and optimized by MolProbity. The Clashes column lists the number of clashes within the asymmetric unit, whereas Symm-Clashes lists symmetry-related clashes.

Mol	Chain	Non-H	H(model)	H(added)	Clashes	Symm-Clashes
1	A	3190	0	3161	75	0
1	B	3135	0	3109	60	0
1	C	3135	0	3109	64	0
1	M	2738	0	2729	55	0
1	N	3135	0	3109	65	0
1	O	3135	0	3109	64	0
2	D	237	0	219	16	0
2	E	433	0	408	11	0
2	I	437	0	411	18	0
2	J	437	0	411	12	0
2	Q	437	0	411	11	0
2	S	437	0	411	16	0
3	H	275	0	62	3	0
3	K	275	0	62	3	0
3	L	275	0	62	3	0
4	X	85	0	19	1	0
4	Y	79	0	18	0	0
4	Z	54	0	8	0	0
All	All	21929	0	20828	392	0

The all-atom clashscore is defined as the number of clashes found per 1000 atoms (including hydrogen atoms). The all-atom clashscore for this structure is 9.

All (392) close contacts within the same asymmetric unit are listed below, sorted by their clash magnitude.

Atom-1	Atom-2	Interatomic distance (Å)	Clash overlap (Å)
1:B:265:ASP:OD2	2:J:41:TYR:CD1	1.65	1.48
1:A:261:ILE:CG2	1:A:265:ASP:OD1	1.89	1.19
1:A:261:ILE:HG22	1:A:265:ASP:CG	1.65	1.15
1:B:265:ASP:OD2	2:J:41:TYR:HD1	0.97	1.10
1:N:261:ILE:CG2	1:N:265:ASP:OD1	2.00	1.09
1:N:261:ILE:HG21	1:N:265:ASP:OD1	1.52	1.08
1:A:261:ILE:HG22	1:A:265:ASP:OD2	1.55	1.06
1:O:261:ILE:HD13	1:O:265:ASP:OD2	1.51	1.06
1:A:261:ILE:CG2	1:A:265:ASP:CG	2.35	0.91

Continued on next page...

Continued from previous page...

Atom-1	Atom-2	Interatomic distance (Å)	Clash overlap (Å)
1:C:261:ILE:HG13	1:C:265:ASP:OD1	1.71	0.91
1:A:261:ILE:CG2	1:A:265:ASP:OD2	2.21	0.88
1:O:261:ILE:CD1	1:O:265:ASP:OD2	2.21	0.88
1:O:261:ILE:HD13	1:O:265:ASP:CG	1.94	0.87
1:A:261:ILE:HG22	1:A:265:ASP:OD1	1.62	0.86
1:N:261:ILE:HG21	1:N:265:ASP:CG	1.97	0.85
1:N:86:SER:O	1:N:121:TYR:HB2	1.79	0.83
1:C:261:ILE:CG1	1:C:265:ASP:OD1	2.27	0.81
1:N:261:ILE:CG2	1:N:265:ASP:CG	2.48	0.81
1:A:265:ASP:OD2	2:I:41:TYR:CD1	2.34	0.81
1:A:261:ILE:HG23	1:A:265:ASP:OD1	1.83	0.78
1:C:261:ILE:HG13	1:C:265:ASP:CG	2.04	0.77
1:C:261:ILE:CD1	1:C:265:ASP:OD1	2.37	0.72
1:O:255:ILE:HG22	1:O:265:ASP:OD1	1.90	0.72
1:A:290:ASN:CG	1:A:325:LYS:HZ1	1.94	0.71
1:A:166:LEU:HG	1:B:96:PRO:HD2	1.73	0.71
1:A:4:GLN:N	1:A:4:GLN:HE21	1.89	0.70
1:B:355:TYR:HB3	1:B:379:TYR:HB3	1.74	0.70
1:C:261:ILE:HD11	1:C:265:ASP:OD1	1.92	0.69
1:B:265:ASP:OD2	2:J:41:TYR:CE1	2.40	0.69
2:D:26:LEU:HD12	1:N:70:ASN:H	1.57	0.69
1:C:265:ASP:OD2	2:D:41:TYR:CE1	2.47	0.68
2:S:10:MET:HA	2:S:14:SER:HB2	1.76	0.67
1:M:96:PRO:HD2	1:O:166:LEU:HD13	1.76	0.67
1:O:356:THR:HG23	2:S:23:ARG:HE	1.59	0.67
2:I:11:MET:H	2:I:14:SER:HB3	1.60	0.67
1:N:355:TYR:HB3	1:N:379:TYR:HB3	1.75	0.67
1:M:71:ARG:HB3	1:M:168:GLU:HG2	1.77	0.66
1:C:96:PRO:HD2	1:N:166:LEU:HG	1.78	0.66
2:S:22:LYS:HD3	2:S:24:THR:H	1.60	0.66
1:A:290:ASN:CG	1:A:325:LYS:NZ	2.50	0.65
1:A:158:LYS:NZ	1:B:91:ILE:O	2.29	0.65
1:N:169:LYS:HD2	1:N:318:THR:HB	1.80	0.64
1:N:79:GLN:HB2	1:N:353:LYS:HD2	1.80	0.64
1:A:209:GLN:HE22	1:A:235:LEU:HB2	1.64	0.63
1:A:289:GLN:OE1	1:A:326:GLU:OE2	2.17	0.63
1:C:261:ILE:HG13	1:C:265:ASP:OD2	1.98	0.63
2:E:40:SER:N	1:O:263:GLY:O	2.31	0.63
2:Q:43:VAL:HG22	2:Q:44:GLN:HG2	1.82	0.62
1:A:244:ASP:OD2	1:B:207:ASN:ND2	2.33	0.62
2:I:19:ARG:NH1	2:I:20:LEU:O	2.33	0.62

Continued on next page...

Continued from previous page...

Atom-1	Atom-2	Interatomic distance (Å)	Clash overlap (Å)
1:A:357:LYS:HG2	2:J:20:LEU:HD12	1.82	0.62
1:N:183:LEU:H	1:N:220:ARG:HH12	1.48	0.61
1:C:74:TRP:HZ2	2:D:48:LEU:HD22	1.66	0.61
2:E:8:ARG:HB3	2:E:12:GLY:HA3	1.83	0.61
1:M:71:ARG:NH2	1:M:272:SER:O	2.34	0.61
1:O:261:ILE:HD13	1:O:265:ASP:OD1	2.00	0.60
1:B:184:SER:H	1:B:220:ARG:HH22	1.50	0.60
1:B:169:LYS:NZ	1:B:318:THR:O	2.34	0.60
1:N:79:GLN:NE2	1:N:80:ASP:OD1	2.34	0.60
1:O:128:LYS:HA	1:O:376:ILE:O	2.01	0.60
1:C:34:THR:HG22	1:C:36:GLY:H	1.66	0.60
1:A:238:ILE:HA	1:A:346:ASP:HA	1.84	0.59
1:C:209:GLN:HE22	1:C:235:LEU:HB2	1.68	0.59
1:O:189:ARG:NH2	1:O:215:TYR:OH	2.35	0.59
1:M:188:VAL:HG12	1:M:392:LEU:HD12	1.85	0.59
1:C:320:ASP:OD2	1:C:323:LYS:NZ	2.36	0.59
1:C:18:ALA:HA	1:C:23:GLN:HG3	1.85	0.58
2:D:31:SER:HB3	2:Q:45:ILE:HD11	1.85	0.58
1:A:261:ILE:HG21	1:A:265:ASP:OD1	1.98	0.58
1:B:129:GLN:NE2	1:B:159:LYS:O	2.36	0.58
1:C:355:TYR:HB3	1:C:379:TYR:HB3	1.84	0.58
1:C:357:LYS:HA	2:I:20:LEU:HB3	1.85	0.58
1:B:71:ARG:NH1	2:E:31:SER:OG	2.37	0.58
1:A:186:THR:HG21	1:A:214:LYS:HD2	1.85	0.58
1:M:244:ASP:OD2	1:N:210:ASN:ND2	2.37	0.58
1:B:244:ASP:OD2	1:O:207:ASN:ND2	2.37	0.58
1:N:115:ARG:NH2	1:N:226:ILE:O	2.34	0.57
1:N:347:ILE:HG12	2:Q:48:LEU:HB3	1.86	0.57
1:C:265:ASP:OD2	2:D:41:TYR:CD1	2.57	0.57
1:B:134:ASN:ND2	1:B:137:ASP:OD1	2.38	0.57
1:C:162:ASP:HA	1:C:165:VAL:HG12	1.86	0.57
1:B:271:ILE:HD13	2:J:45:ILE:HD12	1.86	0.57
1:N:298:ARG:NH1	1:N:302:ASP:O	2.37	0.57
1:B:22:LEU:O	1:B:26:ASN:HB2	2.04	0.57
1:O:238:ILE:HA	1:O:346:ASP:HA	1.86	0.57
2:D:31:SER:OG	1:N:71:ARG:NH1	2.37	0.57
1:N:261:ILE:HG21	1:N:265:ASP:OD2	2.03	0.57
1:B:166:LEU:HG	1:O:96:PRO:HD2	1.87	0.57
1:A:211:ASN:HD22	1:C:68:LEU:HD12	1.70	0.57
1:B:240:ILE:HD11	1:B:270:VAL:HG13	1.87	0.57
1:A:6:THR:HG22	1:A:8:ASN:H	1.70	0.57

Continued on next page...

Continued from previous page...

Atom-1	Atom-2	Interatomic distance (Å)	Clash overlap (Å)
2:I:32:ILE:HD11	2:D:46:HIS:HE1	1.70	0.57
1:A:49:PHE:O	1:A:52:LYS:NZ	2.39	0.56
1:B:71:ARG:NH2	1:O:210:ASN:OD1	2.39	0.56
1:B:177:ASP:OD1	1:B:181:ASN:ND2	2.37	0.56
1:B:281:LYS:NZ	1:B:313:VAL:O	2.38	0.56
1:N:352:TYR:HE1	1:N:382:LYS:HE3	1.70	0.56
1:N:261:ILE:HG23	1:N:265:ASP:OD1	2.01	0.56
1:A:130:LYS:O	1:A:159:LYS:NZ	2.38	0.56
1:A:96:PRO:HD2	1:C:166:LEU:HD13	1.87	0.56
1:A:256:ALA:HA	1:B:260:GLN:HB2	1.87	0.56
1:O:128:LYS:NZ	1:O:303:TYR:OH	2.35	0.56
1:N:68:LEU:HB2	1:N:161:SER:HB3	1.88	0.55
1:M:242:THR:O	1:M:272:SER:HA	2.06	0.55
1:O:242:THR:O	1:O:272:SER:HA	2.06	0.55
1:A:68:LEU:HB2	1:A:161:SER:HB2	1.88	0.55
1:B:326:GLU:O	1:B:326:GLU:HG3	2.06	0.55
1:M:187:ASN:HB3	1:M:391:ILE:HA	1.87	0.55
1:O:353:LYS:HB3	1:O:381:PHE:HB3	1.88	0.55
1:B:356:THR:OG1	1:B:359:MET:SD	2.65	0.55
1:M:281:LYS:NZ	1:M:332:GLU:OE2	2.40	0.55
1:O:162:ASP:HA	1:O:165:VAL:HG12	1.88	0.55
1:C:207:ASN:ND2	1:N:244:ASP:OD2	2.39	0.55
1:B:127:LYS:HE3	1:O:96:PRO:HB2	1.89	0.54
1:B:70:ASN:OD1	1:B:354:ARG:NH2	2.41	0.54
1:M:128:LYS:HA	1:M:376:ILE:O	2.07	0.54
1:A:175:LEU:HD11	1:A:241:LEU:HD21	1.89	0.54
1:N:282:VAL:HB	1:N:313:VAL:HA	1.89	0.54
1:B:208:LEU:HD22	1:B:389:ASN:HB3	1.88	0.54
1:A:326:GLU:O	1:A:326:GLU:HG3	2.08	0.54
1:C:71:ARG:NH1	1:C:272:SER:O	2.41	0.54
2:Q:31:SER:HB3	2:S:45:ILE:HG13	1.88	0.54
1:M:237:ASP:N	1:M:237:ASP:OD1	2.37	0.54
1:A:34:THR:HG22	1:A:36:GLY:H	1.72	0.53
1:M:158:LYS:NZ	1:N:91:ILE:O	2.37	0.53
1:N:240:ILE:HD11	1:N:270:VAL:HG13	1.90	0.53
1:A:128:LYS:HA	1:A:376:ILE:O	2.09	0.53
1:A:179:SER:HB3	1:A:392:LEU:HD12	1.90	0.53
1:C:166:LEU:HA	1:C:169:LYS:HG2	1.91	0.53
1:C:350:ILE:O	2:D:50:LYS:NZ	2.39	0.53
1:O:216:ASN:ND2	1:O:229:TYR:O	2.40	0.53
1:C:237:ASP:N	1:C:237:ASP:OD1	2.41	0.53

Continued on next page...

Continued from previous page...

Atom-1	Atom-2	Interatomic distance (Å)	Clash overlap (Å)
1:M:85:TYR:HA	1:M:122:GLY:HA2	1.91	0.53
1:C:82:ILE:O	1:N:59:ASN:ND2	2.42	0.52
1:M:290:ASN:N	1:M:326:GLU:OE2	2.38	0.52
1:A:197:LEU:HA	1:A:200:LYS:HB2	1.91	0.52
1:M:103:LYS:HE3	1:O:304:GLN:HB3	1.92	0.52
1:C:265:ASP:HB2	2:D:41:TYR:HA	1.92	0.52
1:C:354:ARG:NH1	2:I:24:THR:OG1	2.43	0.52
1:N:55:PHE:O	1:N:57:LYS:NZ	2.41	0.52
1:A:281:LYS:HB2	1:A:334:ILE:HD11	1.90	0.52
1:A:281:LYS:NZ	1:A:313:VAL:O	2.40	0.52
1:B:355:TYR:HE1	1:B:357:LYS:HZ1	1.58	0.52
1:O:169:LYS:HG3	1:O:172:ARG:HH21	1.75	0.52
1:N:134:ASN:ND2	1:N:137:ASP:OD1	2.42	0.52
1:N:261:ILE:HG22	1:N:265:ASP:CG	2.29	0.52
1:O:209:GLN:HE22	1:O:235:LEU:HB3	1.74	0.52
1:M:162:ASP:HA	1:M:165:VAL:HG12	1.91	0.52
2:S:41:TYR:O	4:X:117:UNK:N	2.43	0.52
1:A:134:ASN:HA	1:A:371:GLU:HG3	1.92	0.51
1:B:238:ILE:HA	1:B:346:ASP:HA	1.91	0.51
1:N:281:LYS:NZ	1:N:313:VAL:O	2.32	0.51
1:A:202:PHE:HA	1:A:205:ILE:HB	1.93	0.51
1:B:350:ILE:HG13	1:B:384:ILE:HG22	1.92	0.51
2:J:50:LYS:NZ	2:J:51:GLN:O	2.43	0.51
1:O:174:MET:HG3	1:O:382:LYS:HD3	1.93	0.51
1:C:134:ASN:ND2	1:C:137:ASP:OD1	2.43	0.51
1:C:240:ILE:HD11	1:C:270:VAL:HG13	1.92	0.51
1:M:355:TYR:HB3	1:M:379:TYR:HB3	1.92	0.51
1:A:237:ASP:OD1	1:A:237:ASP:N	2.43	0.51
2:I:30:MET:HA	2:I:34:THR:HB	1.93	0.51
1:N:14:VAL:HA	1:N:19:LYS:HE2	1.92	0.51
1:A:335:LYS:NZ	1:A:336:PRO:O	2.39	0.51
1:C:348:ASN:H	2:D:50:LYS:HE2	1.75	0.51
1:O:197:LEU:HA	1:O:200:LYS:HB2	1.93	0.51
1:A:265:ASP:OD2	2:I:41:TYR:CE1	2.63	0.51
2:Q:31:SER:HA	2:Q:35:ASN:HB3	1.93	0.50
1:M:115:ARG:NH1	1:O:298:ARG:O	2.45	0.50
1:N:285:GLU:HG3	1:N:313:VAL:HG13	1.93	0.50
3:H:20:UNK:N	3:H:32:UNK:O	2.45	0.50
1:B:128:LYS:HA	1:B:376:ILE:O	2.11	0.50
1:M:240:ILE:HB	1:M:270:VAL:HA	1.94	0.50
3:L:20:UNK:N	3:L:32:UNK:O	2.45	0.50

Continued on next page...

Continued from previous page...

Atom-1	Atom-2	Interatomic distance (Å)	Clash overlap (Å)
1:N:182:GLN:HB3	1:N:220:ARG:HH12	1.76	0.50
1:M:104:ASN:ND2	1:M:106:GLU:OE2	2.45	0.50
1:N:104:ASN:ND2	1:N:106:GLU:OE2	2.45	0.50
1:O:129:GLN:NE2	1:O:159:LYS:O	2.45	0.50
1:O:240:ILE:HG13	1:O:270:VAL:HA	1.94	0.49
1:C:167:GLU:OE1	1:C:354:ARG:NH2	2.45	0.49
3:K:20:UNK:N	3:K:32:UNK:O	2.45	0.49
1:A:168:GLU:OE1	1:B:211:ASN:ND2	2.44	0.49
1:A:210:ASN:OD1	1:C:71:ARG:NH2	2.35	0.49
1:N:296:PHE:HE2	1:N:321:VAL:HG23	1.77	0.49
1:C:258:THR:HG23	1:N:256:ALA:HB1	1.95	0.49
1:M:279:VAL:HG12	1:M:318:THR:HA	1.95	0.49
1:M:279:VAL:HG23	1:M:334:ILE:HB	1.94	0.49
1:M:349:SER:HB2	1:M:388:PHE:HB2	1.95	0.49
1:O:240:ILE:HD11	1:O:270:VAL:HG13	1.93	0.49
1:C:216:ASN:ND2	1:C:229:TYR:O	2.46	0.49
1:O:184:SER:OG	1:O:219:HIS:NE2	2.46	0.49
1:C:16:LYS:HB2	1:C:19:LYS:HB2	1.94	0.49
1:C:55:PHE:O	1:C:57:LYS:NZ	2.40	0.49
1:A:104:ASN:ND2	1:A:106:GLU:OE2	2.46	0.49
1:C:173:ALA:HB2	1:C:279:VAL:HG11	1.94	0.49
1:O:185:GLU:HA	1:O:188:VAL:HG12	1.95	0.49
2:S:10:MET:HA	2:S:14:SER:CB	2.42	0.49
1:B:174:MET:HG2	1:B:382:LYS:HD3	1.95	0.48
1:C:239:VAL:HG11	2:D:48:LEU:HG	1.94	0.48
2:Q:8:ARG:HH11	2:Q:10:MET:H	1.61	0.48
1:B:326:GLU:O	1:B:327:PHE:HD1	1.96	0.48
1:C:240:ILE:HG22	1:C:344:ILE:HG23	1.95	0.48
2:J:45:ILE:HD11	2:E:31:SER:HB3	1.95	0.48
1:A:197:LEU:HD13	1:A:340:LEU:HD13	1.95	0.48
1:A:240:ILE:HG13	1:A:270:VAL:HA	1.96	0.48
1:B:244:ASP:N	1:B:273:PHE:O	2.47	0.48
1:A:71:ARG:HH22	1:A:272:SER:H	1.62	0.48
1:M:302:ASP:OD2	1:M:305:SER:OG	2.25	0.48
1:A:172:ARG:HA	1:A:175:LEU:HD23	1.96	0.48
1:C:89:TYR:CZ	1:N:63:LEU:HB2	2.49	0.48
1:N:136:ASN:OD1	1:N:137:ASP:N	2.47	0.48
1:A:144:THR:HG23	1:A:147:ASP:H	1.78	0.47
1:M:256:ALA:HA	1:N:260:GLN:HB2	1.96	0.47
1:A:162:ASP:HA	1:A:165:VAL:HG12	1.96	0.47
1:A:173:ALA:HB2	1:A:279:VAL:HG11	1.96	0.47

Continued on next page...

Continued from previous page...

Atom-1	Atom-2	Interatomic distance (Å)	Clash overlap (Å)
1:B:240:ILE:HG13	1:B:270:VAL:HA	1.96	0.47
1:N:24:ASP:N	1:N:24:ASP:OD1	2.46	0.47
1:N:87:GLU:HB3	1:N:120:LEU:HA	1.96	0.47
1:C:280:PHE:HE2	1:C:320:ASP:HA	1.79	0.47
1:O:349:SER:O	1:O:385:SER:N	2.38	0.47
1:A:290:ASN:ND2	1:A:325:LYS:HZ1	2.12	0.47
1:B:147:ASP:OD1	1:B:147:ASP:N	2.47	0.47
1:C:350:ILE:HG22	1:C:384:ILE:HG13	1.97	0.47
1:M:183:LEU:HD12	1:M:187:ASN:HB2	1.96	0.47
1:M:210:ASN:ND2	1:O:244:ASP:OD2	2.43	0.47
2:D:29:ASN:HB3	2:D:32:ILE:HG23	1.97	0.47
1:B:70:ASN:HD22	1:B:168:GLU:HB3	1.80	0.47
2:E:40:SER:OG	1:O:264:ILE:C	2.53	0.47
1:N:121:TYR:HB3	1:N:381:PHE:HZ	1.78	0.47
1:A:4:GLN:N	1:A:4:GLN:NE2	2.60	0.47
1:A:268:ASP:HA	2:I:44:GLN:HB2	1.96	0.47
1:C:16:LYS:HB2	1:C:19:LYS:HE2	1.96	0.46
1:O:147:ASP:N	1:O:147:ASP:OD1	2.46	0.46
1:B:41:ASN:ND2	1:B:46:PHE:O	2.47	0.46
1:B:197:LEU:HD11	1:B:246:LEU:HD21	1.98	0.46
2:S:45:ILE:HG22	2:S:46:HIS:CD2	2.50	0.46
1:C:13:LEU:HD11	1:C:39:TRP:HA	1.97	0.46
2:D:53:PHE:HB3	1:N:62:LEU:HD11	1.98	0.46
1:A:351:LYS:O	1:A:382:LYS:HA	2.15	0.46
2:S:11:MET:HA	2:S:15:TYR:HB2	1.98	0.46
2:S:20:LEU:HB2	2:S:23:ARG:NH1	2.31	0.46
1:B:346:ASP:OD1	1:B:346:ASP:N	2.45	0.46
2:J:8:ARG:HH11	2:J:10:MET:H	1.64	0.46
2:Q:30:MET:N	2:Q:30:MET:SD	2.88	0.46
1:C:94:THR:O	1:N:129:GLN:NE2	2.49	0.46
1:M:298:ARG:HH22	1:M:306:GLN:HA	1.81	0.46
1:N:213:ALA:HA	1:N:230:THR:HA	1.97	0.46
1:C:178:TYR:OH	1:C:217:GLU:OE2	2.28	0.46
1:O:173:ALA:HB2	1:O:279:VAL:HG11	1.98	0.46
1:A:172:ARG:NH1	1:A:275:ASP:O	2.48	0.46
1:B:254:LYS:HE2	1:B:254:LYS:HB2	1.75	0.46
1:N:263:GLY:O	2:Q:39:ASP:N	2.48	0.46
1:O:289:GLN:N	1:O:326:GLU:OE2	2.42	0.46
1:A:218:VAL:HG21	1:A:229:TYR:HB3	1.97	0.45
1:O:51:ASN:HB3	1:O:54:LEU:HD13	1.99	0.45
1:B:242:THR:HG21	1:B:246:LEU:HD12	1.97	0.45

Continued on next page...

Continued from previous page...

Atom-1	Atom-2	Interatomic distance (Å)	Clash overlap (Å)
2:S:34:THR:HA	2:S:36:LYS:HG2	1.99	0.45
1:O:346:ASP:N	1:O:346:ASP:OD1	2.50	0.45
1:C:51:ASN:HB3	1:C:54:LEU:HD23	1.99	0.45
1:C:49:PHE:O	1:C:52:LYS:NZ	2.49	0.45
2:J:8:ARG:HG3	2:J:12:GLY:HA3	1.98	0.45
2:E:33:ASP:O	2:E:36:LYS:NZ	2.39	0.45
1:M:209:GLN:HE22	1:M:235:LEU:HB2	1.82	0.45
1:O:73:ASN:OD1	2:S:26:LEU:N	2.50	0.45
1:O:209:GLN:NE2	1:O:235:LEU:HB3	2.32	0.45
1:O:362:PRO:HA	1:O:363:PRO:HD3	1.83	0.45
1:B:255:ILE:HG23	1:B:261:ILE:HG21	1.99	0.44
1:B:357:LYS:HG2	2:E:20:LEU:HD12	1.99	0.44
1:M:59:ASN:N	1:N:85:TYR:O	2.50	0.44
1:N:237:ASP:OD1	1:N:237:ASP:N	2.48	0.44
1:B:326:GLU:HA	1:B:326:GLU:OE1	2.17	0.44
2:S:12:GLY:C	2:S:14:SER:H	2.20	0.44
3:K:38:UNK:O	3:K:42:UNK:N	2.51	0.44
1:C:162:ASP:OD1	1:C:162:ASP:N	2.49	0.44
1:M:244:ASP:N	1:M:273:PHE:O	2.45	0.44
1:N:289:GLN:HB2	1:N:326:GLU:OE2	2.17	0.44
1:A:189:ARG:HB2	1:A:393:ILE:HG12	1.99	0.44
1:C:279:VAL:HG12	1:C:318:THR:HA	2.00	0.44
1:M:70:ASN:O	1:M:72:PHE:N	2.49	0.44
1:O:344:ILE:HD11	1:O:391:ILE:HB	1.99	0.44
3:L:38:UNK:O	3:L:42:UNK:N	2.51	0.44
1:A:240:ILE:HB	1:A:344:ILE:HG22	1.99	0.44
1:C:12:LEU:HG	1:C:14:VAL:H	1.82	0.44
2:I:31:SER:HA	2:I:35:ASN:HB3	2.00	0.44
1:M:354:ARG:NH2	2:Q:24:THR:OG1	2.51	0.44
1:N:240:ILE:HG13	1:N:270:VAL:HA	1.99	0.44
1:A:244:ASP:OD1	1:A:244:ASP:N	2.50	0.44
1:B:136:ASN:OD1	1:B:137:ASP:N	2.48	0.44
1:B:179:SER:HA	1:B:183:LEU:HD21	2.00	0.44
1:B:240:ILE:HB	1:B:344:ILE:HG22	1.99	0.44
1:N:197:LEU:HD21	1:N:342:ALA:HB2	1.98	0.44
1:A:213:ALA:HB1	1:A:228:GLN:HB2	1.99	0.44
1:A:350:ILE:O	2:I:50:LYS:NZ	2.50	0.44
1:M:253:THR:O	1:M:257:ASN:HB2	2.16	0.44
1:N:335:LYS:HD3	1:N:336:PRO:HD2	2.00	0.44
2:S:45:ILE:HD13	2:S:45:ILE:HA	1.90	0.44
1:A:360:LEU:HB2	2:J:19:ARG:HH12	1.83	0.43

Continued on next page...

Continued from previous page...

Atom-1	Atom-2	Interatomic distance (Å)	Clash overlap (Å)
1:B:158:LYS:HD3	1:O:91:ILE:HB	2.00	0.43
1:C:284:LYS:HE2	1:C:330:ASN:HB3	1.99	0.43
1:M:163:ILE:HG22	1:N:96:PRO:HG3	1.99	0.43
1:M:362:PRO:HA	1:M:363:PRO:HD3	1.86	0.43
1:A:346:ASP:OD1	1:A:346:ASP:N	2.50	0.43
2:Q:11:MET:HA	2:Q:14:SER:HB2	2.00	0.43
1:A:300:TYR:HE1	1:B:228:GLN:HB2	1.82	0.43
1:O:111:ARG:HD3	1:O:113:TYR:HE2	1.83	0.43
1:O:216:ASN:HD22	1:O:229:TYR:HD2	1.66	0.43
1:B:164:ASN:OD1	2:E:24:THR:OG1	2.36	0.43
3:H:31:UNK:O	3:H:37:UNK:N	2.52	0.43
1:M:243:THR:HG22	1:M:276:LEU:HD23	1.99	0.43
3:L:31:UNK:O	3:L:37:UNK:N	2.52	0.43
3:K:31:UNK:O	3:K:37:UNK:N	2.52	0.43
1:A:260:GLN:HG2	1:C:261:ILE:HG21	2.00	0.43
1:C:115:ARG:HH12	1:N:299:ALA:HA	1.82	0.43
3:H:38:UNK:O	3:H:42:UNK:N	2.51	0.43
1:M:91:ILE:HG13	1:O:158:LYS:HD2	1.99	0.43
1:M:274:ASP:N	1:M:274:ASP:OD1	2.51	0.43
2:E:34:THR:HB	1:O:209:GLN:HB3	2.00	0.43
1:O:24:ASP:OD1	1:O:24:ASP:N	2.37	0.43
1:A:167:GLU:HA	1:A:170:GLU:HG3	2.01	0.43
1:B:131:PHE:HB3	1:B:159:LYS:HE2	2.00	0.43
1:C:216:ASN:HD22	1:C:229:TYR:HD2	1.67	0.43
1:B:197:LEU:HA	1:B:200:LYS:HB2	2.01	0.42
2:D:39:ASP:O	2:D:40:SER:OG	2.31	0.42
1:M:218:VAL:HG21	1:M:229:TYR:HB3	2.01	0.42
1:A:62:LEU:N	1:B:88:GLU:OE1	2.52	0.42
1:B:172:ARG:NH1	1:B:275:ASP:O	2.51	0.42
2:I:36:LYS:HB3	2:I:36:LYS:HE2	1.85	0.42
2:I:38:GLU:HG3	2:D:43:VAL:HB	2.02	0.42
1:N:326:GLU:HA	1:N:326:GLU:OE1	2.19	0.42
1:A:208:LEU:HD21	1:A:344:ILE:HD13	2.01	0.42
1:M:293:SER:HA	1:M:324:LEU:HD13	2.00	0.42
1:O:16:LYS:HD2	1:O:19:LYS:HG2	2.02	0.42
1:O:281:LYS:NZ	1:O:313:VAL:O	2.45	0.42
2:I:16:GLU:OE1	2:I:16:GLU:N	2.51	0.42
1:M:280:PHE:CE1	1:M:333:GLU:HB3	2.55	0.42
1:O:249:TYR:OH	1:O:254:LYS:NZ	2.53	0.42
1:B:285:GLU:HB3	1:B:313:VAL:HG13	2.01	0.42
2:E:40:SER:O	1:O:265:ASP:N	2.52	0.42

Continued on next page...

Continued from previous page...

Atom-1	Atom-2	Interatomic distance (Å)	Clash overlap (Å)
1:M:242:THR:OG1	1:M:243:THR:N	2.53	0.42
1:O:62:LEU:HD13	2:S:53:PHE:HE2	1.85	0.42
1:O:90:VAL:H	1:O:117:ALA:HB3	1.85	0.42
1:C:146:ALA:O	1:C:149:THR:OG1	2.33	0.42
1:M:276:LEU:HD13	1:M:276:LEU:HA	1.95	0.42
1:O:274:ASP:N	1:O:274:ASP:OD1	2.53	0.42
1:C:265:ASP:OD2	2:D:41:TYR:HE1	1.96	0.41
1:N:182:GLN:HB3	1:N:220:ARG:NH1	2.35	0.41
1:N:242:THR:HG21	1:N:246:LEU:HD12	2.02	0.41
1:A:254:LYS:HE2	1:A:254:LYS:HB2	1.75	0.41
1:O:243:THR:HG22	1:O:245:SER:H	1.84	0.41
1:N:189:ARG:NH1	1:N:203:GLU:OE2	2.53	0.41
1:N:279:VAL:HA	1:N:318:THR:HA	2.02	0.41
1:C:64:ILE:HG22	2:I:53:PHE:HB2	2.01	0.41
1:M:260:GLN:HB2	1:O:256:ALA:HA	2.03	0.41
1:O:297:LEU:HB3	1:O:302:ASP:HB3	2.01	0.41
1:C:357:LYS:HG2	2:I:20:LEU:HD23	2.02	0.41
1:M:107:LEU:HD21	1:O:303:TYR:HE2	1.86	0.41
1:M:268:ASP:HA	2:S:44:GLN:HB2	2.03	0.41
1:A:348:ASN:HB3	2:I:50:LYS:HB2	2.02	0.41
1:B:175:LEU:HD23	1:B:175:LEU:HA	1.94	0.41
1:C:133:LEU:HD13	1:C:133:LEU:HA	1.92	0.41
1:A:242:THR:OG1	1:A:243:THR:N	2.54	0.41
1:A:326:GLU:OE1	1:A:326:GLU:HA	2.21	0.41
1:M:71:ARG:H	2:Q:26:LEU:HD13	1.85	0.41
1:M:343:PHE:CE2	1:M:345:LEU:HD23	2.56	0.41
1:N:206:LEU:HD23	1:N:209:GLN:HE21	1.85	0.41
1:N:298:ARG:NH2	1:N:305:SER:O	2.48	0.41
2:J:26:LEU:HD11	2:J:30:MET:HB2	2.01	0.41
1:M:194:LYS:HA	1:M:340:LEU:HD11	2.02	0.41
1:C:119:LYS:NZ	1:C:220:ARG:O	2.44	0.40
1:C:349:SER:HA	1:C:385:SER:HB3	2.03	0.40
1:O:80:ASP:OD1	1:O:80:ASP:N	2.53	0.40
1:O:355:TYR:HB3	1:O:379:TYR:HB3	2.01	0.40
1:A:209:GLN:HB3	2:I:34:THR:HG22	2.02	0.40
1:B:45:MET:SD	1:B:45:MET:N	2.94	0.40
1:B:51:ASN:HB2	1:B:54:LEU:HD23	2.03	0.40
1:C:361:LYS:HA	1:C:362:PRO:HD3	1.94	0.40
1:A:242:THR:HG21	1:A:246:LEU:HD12	2.03	0.40
1:B:306:GLN:N	1:B:309:ASP:OD2	2.42	0.40
1:M:178:TYR:OH	1:M:217:GLU:OE2	2.34	0.40

Continued on next page...

Continued from previous page...

Atom-1	Atom-2	Interatomic distance (Å)	Clash overlap (Å)
1:M:361:LYS:HD3	1:M:375:TRP:HB2	2.04	0.40
1:N:362:PRO:HA	1:N:363:PRO:HD3	1.85	0.40
1:A:127:LYS:O	1:A:377:HIS:HA	2.21	0.40
1:C:294:ILE:HG22	1:C:298:ARG:HE	1.86	0.40
2:J:36:LYS:HE2	2:J:36:LYS:HB3	1.82	0.40
2:E:35:ASN:H	1:O:209:GLN:HB3	1.86	0.40
1:N:285:GLU:HG2	1:N:312:PRO:HA	2.02	0.40
1:N:347:ILE:H	1:N:347:ILE:HG13	1.59	0.40
2:S:26:LEU:HD11	2:S:30:MET:H	1.86	0.40
1:M:132:THR:HG21	1:N:111:ARG:HA	2.03	0.40
1:M:172:ARG:NH1	1:M:275:ASP:O	2.54	0.40
1:M:278:GLY:H	1:M:279:VAL:HG22	1.85	0.40
1:M:280:PHE:HB2	1:M:317:PHE:HB2	2.03	0.40
1:O:384:ILE:HD13	1:O:384:ILE:HG21	1.88	0.40

There are no symmetry-related clashes.

5.3 Torsion angles [i](#)

5.3.1 Protein backbone [i](#)

In the following table, the Percentiles column shows the percent Ramachandran outliers of the chain as a percentile score with respect to all PDB entries followed by that with respect to all EM entries.

The Analysed column shows the number of residues for which the backbone conformation was analysed, and the total number of residues.

Mol	Chain	Analysed	Favoured	Allowed	Outliers	Percentiles	
1	A	391/408 (96%)	352 (90%)	39 (10%)	0	100	100
1	B	384/408 (94%)	344 (90%)	40 (10%)	0	100	100
1	C	384/408 (94%)	344 (90%)	39 (10%)	1 (0%)	41	74
1	M	336/408 (82%)	302 (90%)	34 (10%)	0	100	100
1	N	384/408 (94%)	342 (89%)	42 (11%)	0	100	100
1	O	384/408 (94%)	348 (91%)	35 (9%)	1 (0%)	41	74
2	D	28/60 (47%)	18 (64%)	10 (36%)	0	100	100
2	E	52/60 (87%)	38 (73%)	14 (27%)	0	100	100
2	I	53/60 (88%)	40 (76%)	12 (23%)	1 (2%)	8	42

Continued on next page...

Continued from previous page...

Mol	Chain	Analysed	Favoured	Allowed	Outliers	Percentiles	
2	J	53/60 (88%)	42 (79%)	11 (21%)	0	100	100
2	Q	53/60 (88%)	40 (76%)	13 (24%)	0	100	100
2	S	53/60 (88%)	41 (77%)	10 (19%)	2 (4%)	3	29
All	All	2555/2808 (91%)	2251 (88%)	299 (12%)	5 (0%)	50	79

All (5) Ramachandran outliers are listed below:

Mol	Chain	Res	Type
2	I	45	ILE
2	S	45	ILE
1	C	181	ASN
2	S	13	THR
1	O	235	LEU

5.3.2 Protein sidechains [i](#)

In the following table, the Percentiles column shows the percent sidechain outliers of the chain as a percentile score with respect to all PDB entries followed by that with respect to all EM entries.

The Analysed column shows the number of residues for which the sidechain conformation was analysed, and the total number of residues.

Mol	Chain	Analysed	Rotameric	Outliers	Percentiles	
1	A	353/367 (96%)	344 (98%)	9 (2%)	47	70
1	B	346/367 (94%)	339 (98%)	7 (2%)	55	75
1	C	346/367 (94%)	337 (97%)	9 (3%)	46	69
1	M	303/367 (83%)	297 (98%)	6 (2%)	55	75
1	N	346/367 (94%)	339 (98%)	7 (2%)	55	75
1	O	346/367 (94%)	340 (98%)	6 (2%)	60	78
2	D	29/56 (52%)	26 (90%)	3 (10%)	7	31
2	E	51/56 (91%)	51 (100%)	0	100	100
2	I	51/56 (91%)	48 (94%)	3 (6%)	19	51
2	J	51/56 (91%)	50 (98%)	1 (2%)	55	75
2	Q	51/56 (91%)	47 (92%)	4 (8%)	12	42
2	S	51/56 (91%)	50 (98%)	1 (2%)	55	75

Continued on next page...

Continued from previous page...

Mol	Chain	Analysed	Rotameric	Outliers	Percentiles
All	All	2324/2538 (92%)	2268 (98%)	56 (2%)	51 71

All (56) residues with a non-rotameric sidechain are listed below:

Mol	Chain	Res	Type
1	A	4	GLN
1	A	31	LYS
1	A	45	MET
1	A	70	ASN
1	A	111	ARG
1	A	167	GLU
1	A	172	ARG
1	A	236	LYS
1	A	240	ILE
1	B	19	LYS
1	B	70	ASN
1	B	73	ASN
1	B	94	THR
1	B	172	ARG
1	B	337	LYS
1	B	382	LYS
1	C	16	LYS
1	C	45	MET
1	C	70	ASN
1	C	94	THR
1	C	103	LYS
1	C	115	ARG
1	C	166	LEU
1	C	175	LEU
1	C	382	LYS
2	J	8	ARG
2	I	13	THR
2	I	19	ARG
2	I	22	LYS
2	D	30	MET
2	D	34	THR
2	D	36	LYS
1	M	63	LEU
1	M	79	GLN
1	M	111	ARG
1	M	115	ARG
1	M	172	ARG

Continued on next page...

Continued from previous page...

Mol	Chain	Res	Type
1	M	251	LEU
1	N	19	LYS
1	N	73	ASN
1	N	77	LYS
1	N	172	ARG
1	N	250	LEU
1	N	337	LYS
1	N	351	LYS
1	O	45	MET
1	O	92	MET
1	O	94	THR
1	O	175	LEU
1	O	235	LEU
1	O	382	LYS
2	Q	8	ARG
2	Q	22	LYS
2	Q	23	ARG
2	Q	30	MET
2	S	30	MET

Sometimes sidechains can be flipped to improve hydrogen bonding and reduce clashes. All (2) such sidechains are listed below:

Mol	Chain	Res	Type
1	A	211	ASN
1	C	260	GLN

5.3.3 RNA [i](#)

There are no RNA molecules in this entry.

5.4 Non-standard residues in protein, DNA, RNA chains [i](#)

There are no non-standard protein/DNA/RNA residues in this entry.

5.5 Carbohydrates [i](#)

There are no monosaccharides in this entry.

5.6 Ligand geometry [i](#)

There are no ligands in this entry.

5.7 Other polymers [i](#)

There are no such residues in this entry.

5.8 Polymer linkage issues [i](#)

There are no chain breaks in this entry.

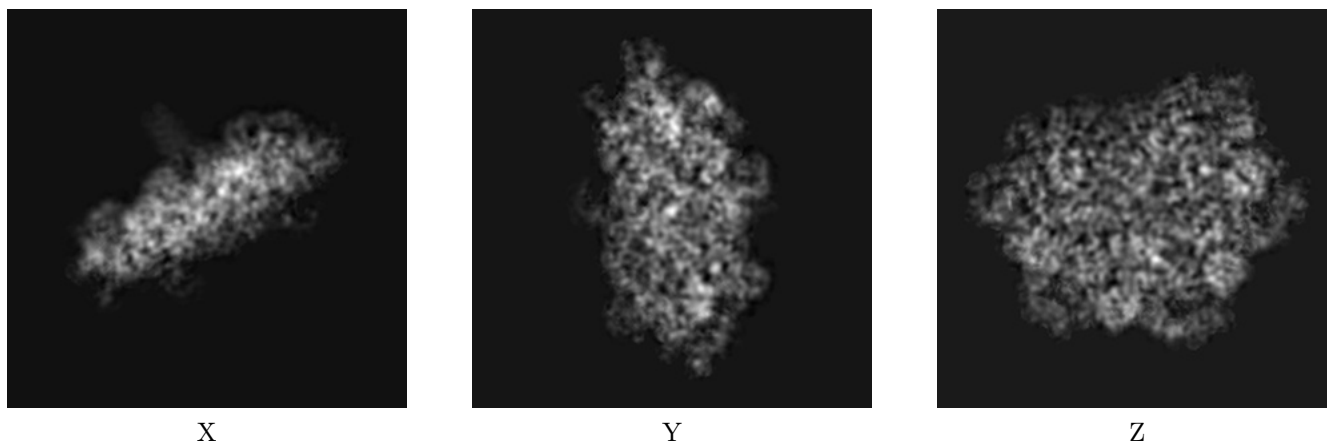
6 Map visualisation [i](#)

This section contains visualisations of the EMDB entry EMD-4440. These allow visual inspection of the internal detail of the map and identification of artifacts.

No raw map or half-maps were deposited for this entry and therefore no images, graphs, etc. pertaining to the raw map can be shown.

6.1 Orthogonal projections [i](#)

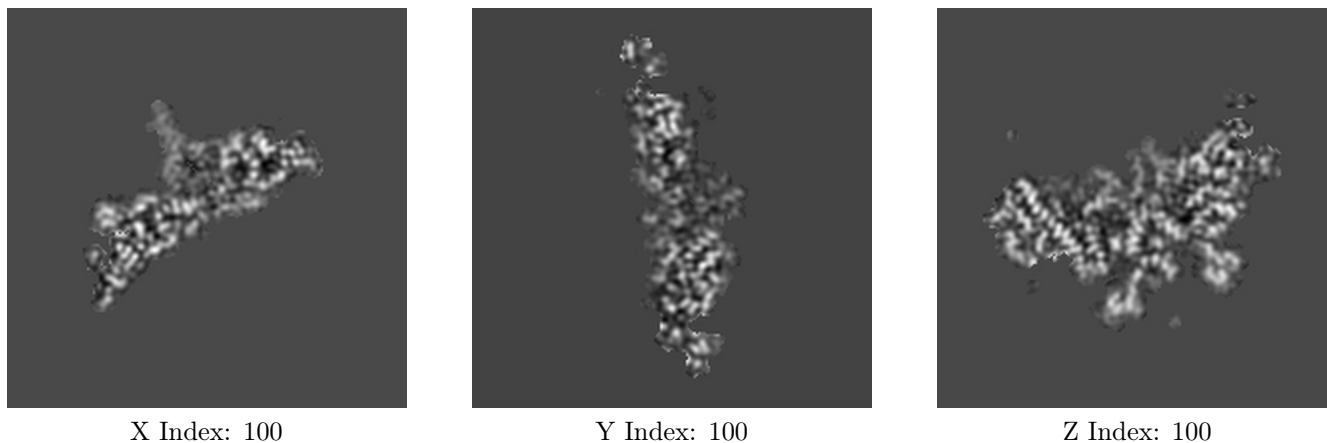
6.1.1 Primary map



The images above show the map projected in three orthogonal directions.

6.2 Central slices [i](#)

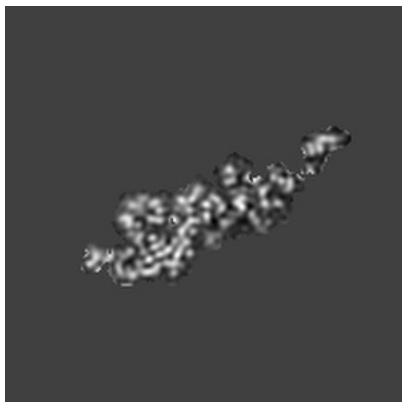
6.2.1 Primary map



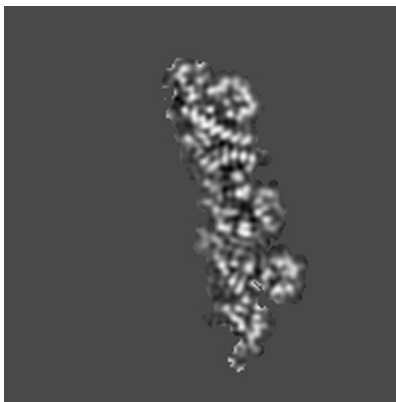
The images above show central slices of the map in three orthogonal directions.

6.3 Largest variance slices [i](#)

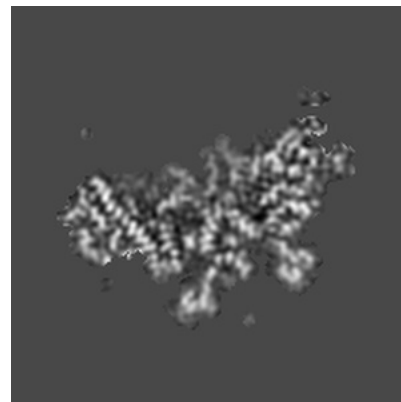
6.3.1 Primary map



X Index: 140



Y Index: 117



Z Index: 100

The images above show the largest variance slices of the map in three orthogonal directions.

6.4 Orthogonal surface views [i](#)

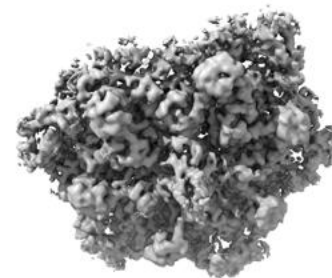
6.4.1 Primary map



X



Y



Z

The images above show the 3D surface view of the map at the recommended contour level 1.67. These images, in conjunction with the slice images, may facilitate assessment of whether an appropriate contour level has been provided.

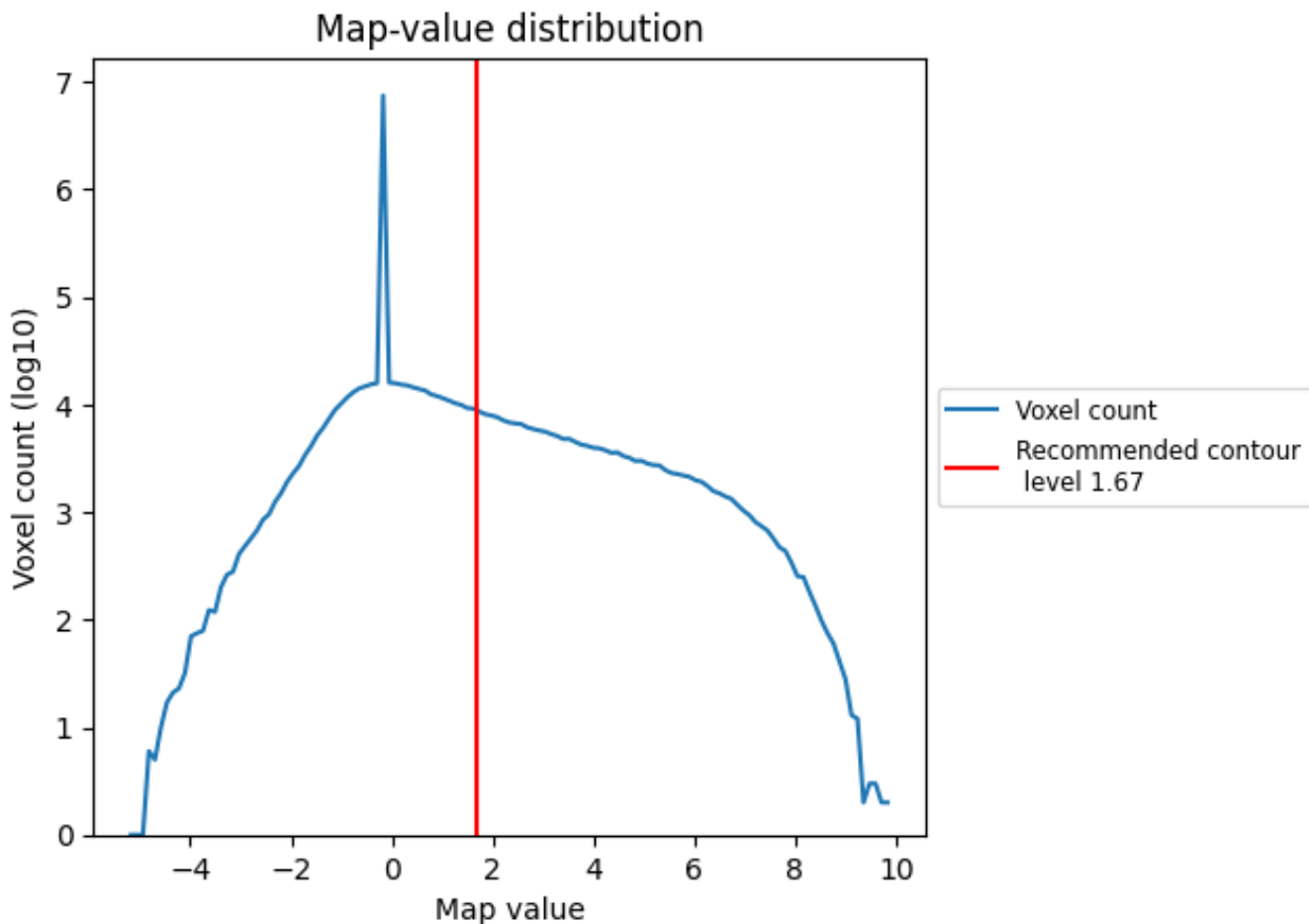
6.5 Mask visualisation

This section was not generated. No masks/segmentation were deposited.

7 Map analysis [i](#)

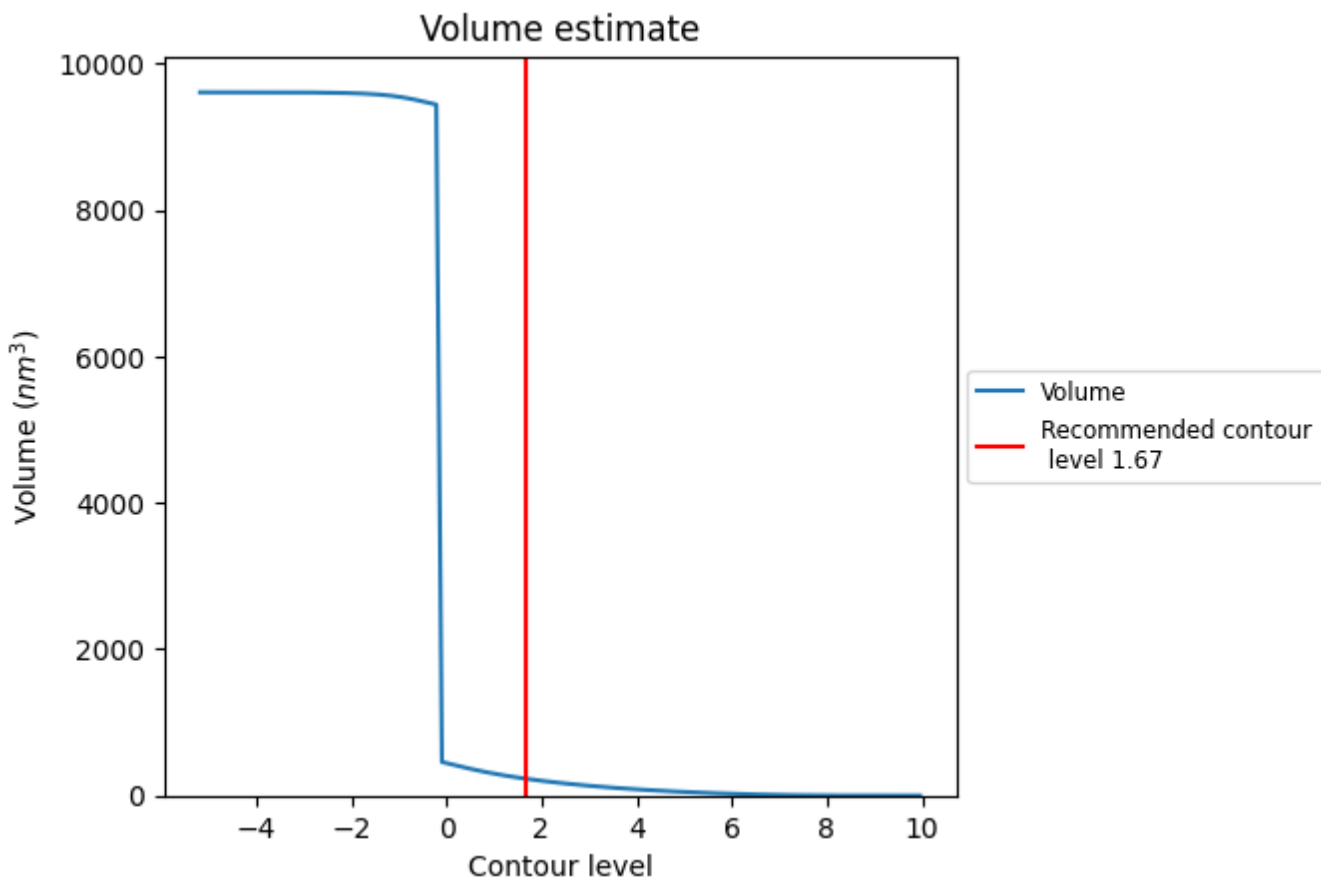
This section contains the results of statistical analysis of the map.

7.1 Map-value distribution [i](#)



The map-value distribution is plotted in 128 intervals along the x-axis. The y-axis is logarithmic. A spike in this graph at zero usually indicates that the volume has been masked.

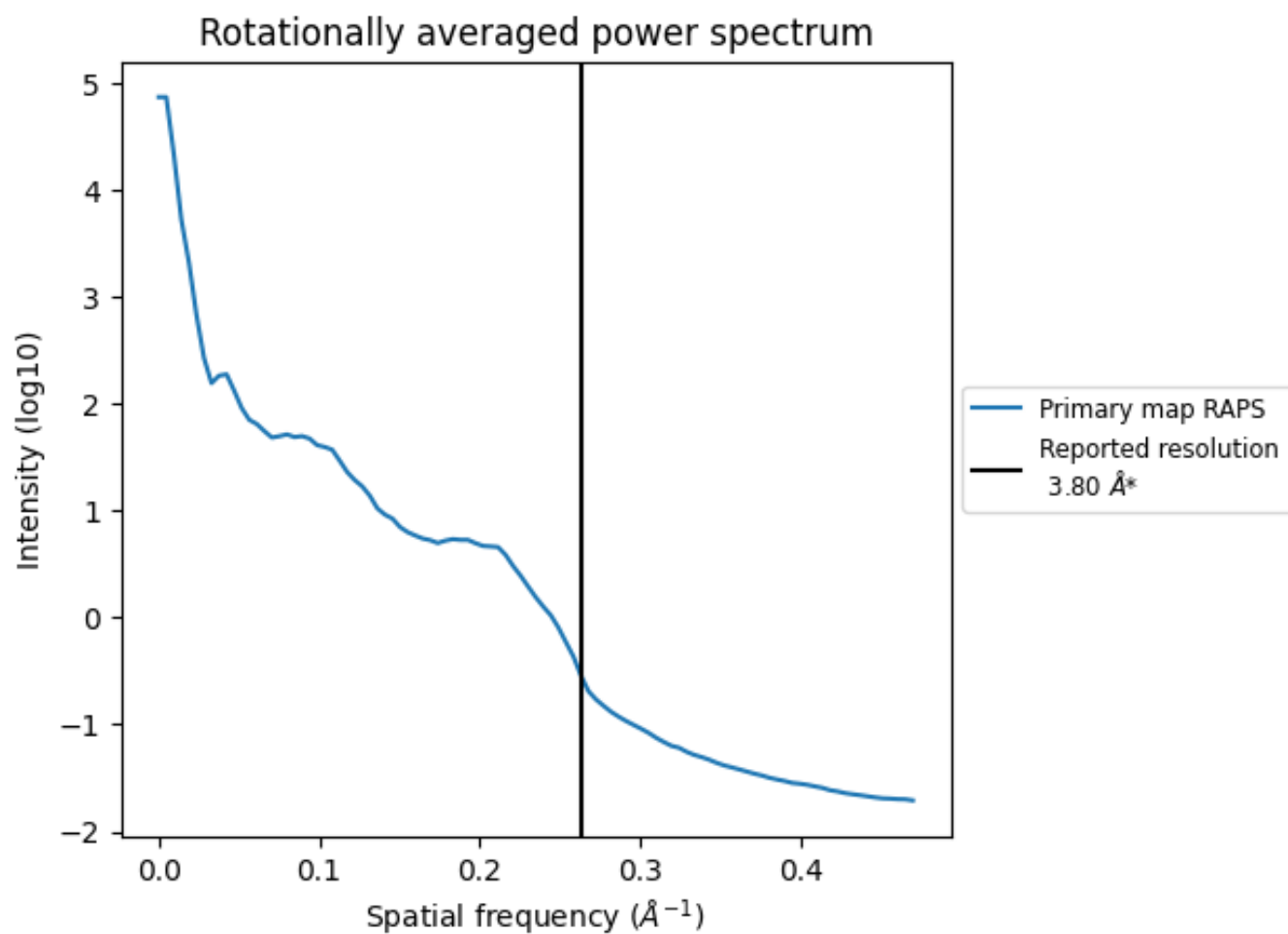
7.2 Volume estimate [i](#)



The volume at the recommended contour level is 230 nm³; this corresponds to an approximate mass of 208 kDa.

The volume estimate graph shows how the enclosed volume varies with the contour level. The recommended contour level is shown as a vertical line and the intersection between the line and the curve gives the volume of the enclosed surface at the given level.

7.3 Rotationally averaged power spectrum [i](#)



*Reported resolution corresponds to spatial frequency of 0.263\AA^{-1}

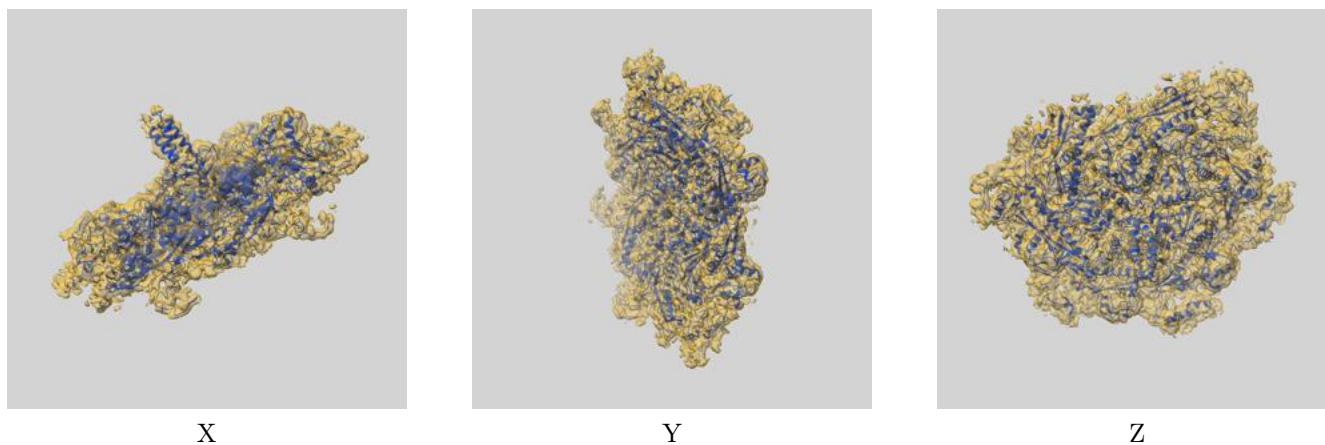
8 Fourier-Shell correlation

This section was not generated. No FSC curve or half-maps provided.

9 Map-model fit [i](#)

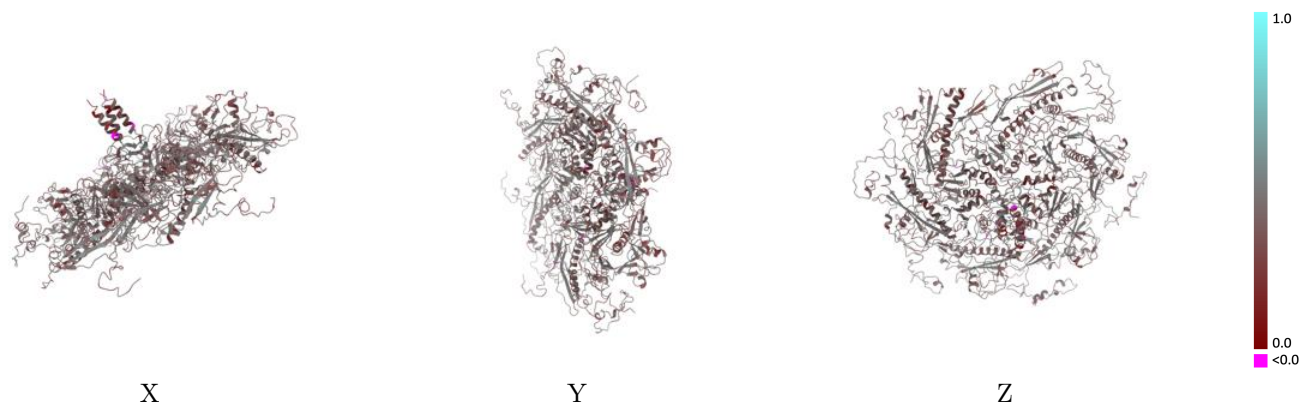
This section contains information regarding the fit between EMDB map EMD-4440 and PDB model 6IAW. Per-residue inclusion information can be found in section 3 on page 6.

9.1 Map-model overlay [i](#)



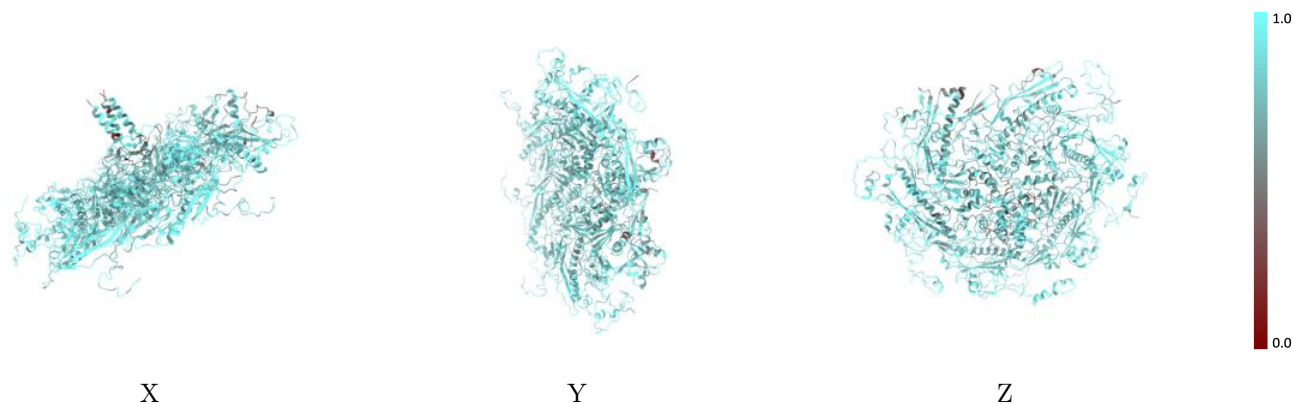
The images above show the 3D surface view of the map at the recommended contour level 1.67 at 50% transparency in yellow overlaid with a ribbon representation of the model coloured in blue. These images allow for the visual assessment of the quality of fit between the atomic model and the map.

9.2 Q-score mapped to coordinate model [i](#)



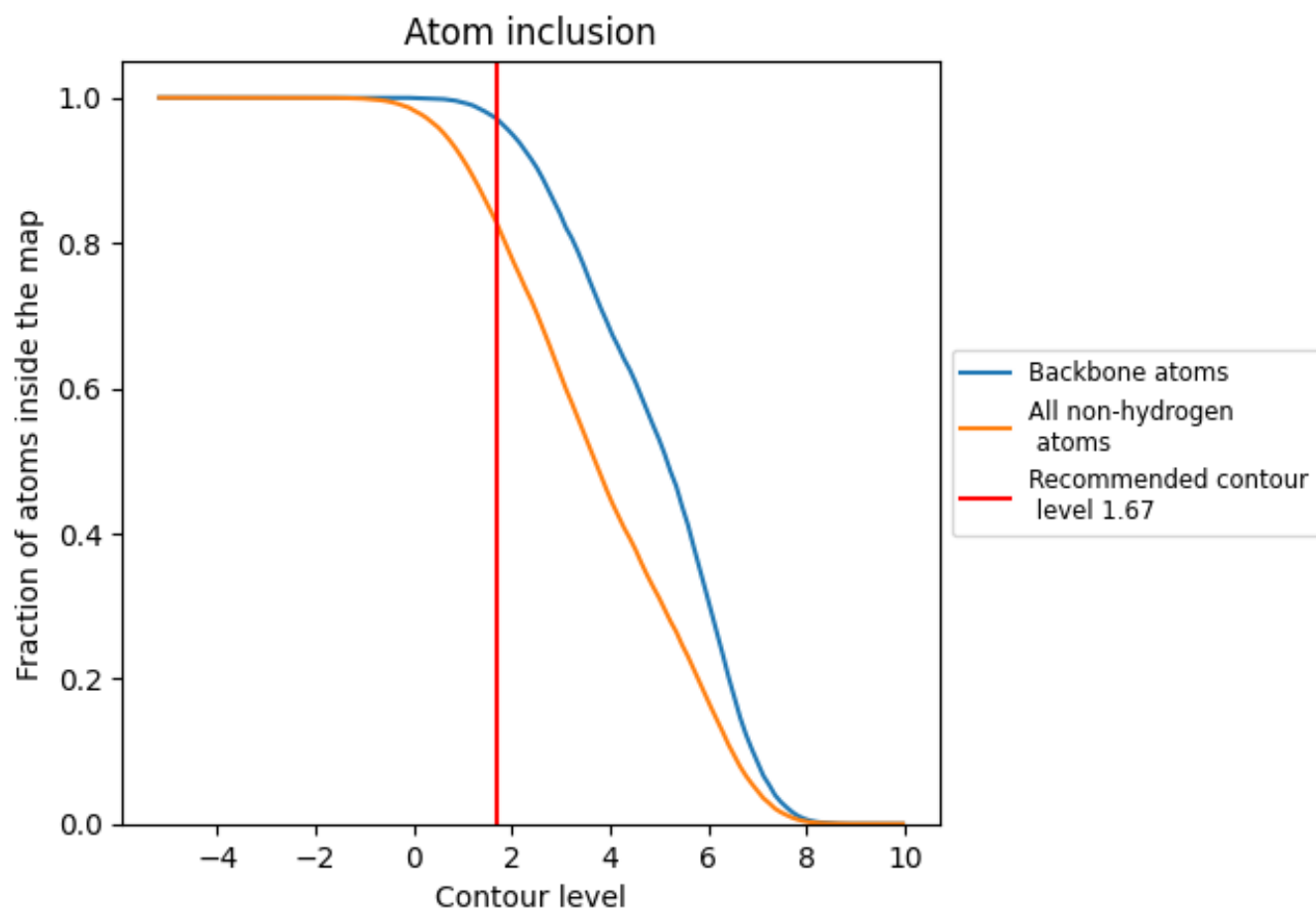
The images above show the model with each residue coloured according to its Q-score. This shows their resolvability in the map with higher Q-score values reflecting better resolvability. Please note: Q-score is calculating the resolvability of atoms, and thus high values are only expected at resolutions at which atoms can be resolved. Low Q-score values may therefore be expected for many entries.

9.3 Atom inclusion mapped to coordinate model [i](#)



The images above show the model with each residue coloured according to its atom inclusion. This shows to what extent they are inside the map at the recommended contour level (1.67).
































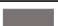






9.4 Atom inclusion [i](#)



At the recommended contour level, 97% of all backbone atoms, 83% of all non-hydrogen atoms, are inside the map.

9.5 Map-model fit summary

The table lists the average atom inclusion at the recommended contour level (1.67) and Q-score for the entire model and for each chain.

Chain	Atom inclusion	Q-score
All	 0.8303	 0.3930
A	 0.8571	 0.4020
B	 0.8597	 0.4080
C	 0.8545	 0.4030
D	 0.7373	 0.3140
E	 0.7288	 0.3380
H	 0.6618	 0.3720
I	 0.7407	 0.3310
J	 0.7757	 0.3410
K	 0.7345	 0.3810
L	 0.7236	 0.3510
M	 0.8222	 0.3930
N	 0.8286	 0.3940
O	 0.8545	 0.4070
Q	 0.7477	 0.3420
S	 0.7430	 0.3220
X	 0.8588	 0.4540
Y	 0.8734	 0.4780
Z	 0.7778	 0.4810

