



# Full wwPDB X-ray Structure Validation Report ⓘ

Jun 22, 2024 – 10:42 PM EDT

PDB ID : 6H6I  
Title : Ferric murine neuroglobin Gly-loop mutant  
Authors : Exertier, C.; Vallone, B.; Savino, C.; Freda, I.; Montemiglio, L.C.; Cerutti, G.; Scaglione, A.; Parisi, G.  
Deposited on : 2018-07-27  
Resolution : 1.60 Å(reported)

This is a Full wwPDB X-ray Structure Validation Report for a publicly released PDB entry.

We welcome your comments at [validation@mail.wwpdb.org](mailto:validation@mail.wwpdb.org)

A user guide is available at

<https://www.wwpdb.org/validation/2017/XrayValidationReportHelp>

with specific help available everywhere you see the ⓘ symbol.

The types of validation reports are described at

<http://www.wwpdb.org/validation/2017/FAQs#types>.

---

The following versions of software and data (see [references ⓘ](#)) were used in the production of this report:

MolProbity : 4.02b-467  
Mogul : 2022.3.0, CSD as543be (2022)  
Xtriage (Phenix) : 1.20.1  
EDS : 2.37.1  
buster-report : 1.1.7 (2018)  
Percentile statistics : 20191225.v01 (using entries in the PDB archive December 25th 2019)  
Refmac : 5.8.0158  
CCP4 : 7.0.044 (Gargrove)  
Ideal geometry (proteins) : Engh & Huber (2001)  
Ideal geometry (DNA, RNA) : Parkinson et al. (1996)  
Validation Pipeline (wwPDB-VP) : 2.37.1

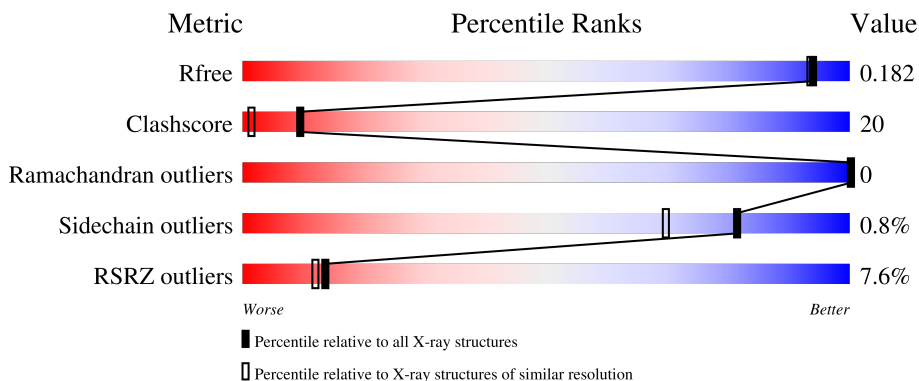
# 1 Overall quality at a glance

The following experimental techniques were used to determine the structure:

*X-RAY DIFFRACTION*

The reported resolution of this entry is 1.60 Å.

Percentile scores (ranging between 0-100) for global validation metrics of the entry are shown in the following graphic. The table shows the number of entries on which the scores are based.



Metric	Whole archive (#Entries)	Similar resolution (#Entries, resolution range(Å))
$R_{free}$	130704	3398 (1.60-1.60)
Clashscore	141614	3665 (1.60-1.60)
Ramachandran outliers	138981	3564 (1.60-1.60)
Sidechain outliers	138945	3563 (1.60-1.60)
RSRZ outliers	127900	3321 (1.60-1.60)

The table below summarises the geometric issues observed across the polymeric chains and their fit to the electron density. The red, orange, yellow and green segments of the lower bar indicate the fraction of residues that contain outliers for  $\geq 3$ , 2, 1 and 0 types of geometric quality criteria respectively. A grey segment represents the fraction of residues that are not modelled. The numeric value for each fraction is indicated below the corresponding segment, with a dot representing fractions  $\leq 5\%$ . The upper red bar (where present) indicates the fraction of residues that have poor fit to the electron density. The numeric value is given above the bar.

Mol	Chain	Length	Quality of chain
1	A	151	

The following table lists non-polymeric compounds, carbohydrate monomers and non-standard residues in protein, DNA, RNA chains that are outliers for geometric or electron-density-fit criteria:

Mol	Type	Chain	Res	Chirality	Geometry	Clashes	Electron density
4	TRS	A	203	-	X	-	-

*Continued on next page...*

*Continued from previous page...*

<b>Mol</b>	<b>Type</b>	<b>Chain</b>	<b>Res</b>	<b>Chirality</b>	<b>Geometry</b>	<b>Clashes</b>	<b>Electron density</b>
6	PEG	A	208	-	-	X	-



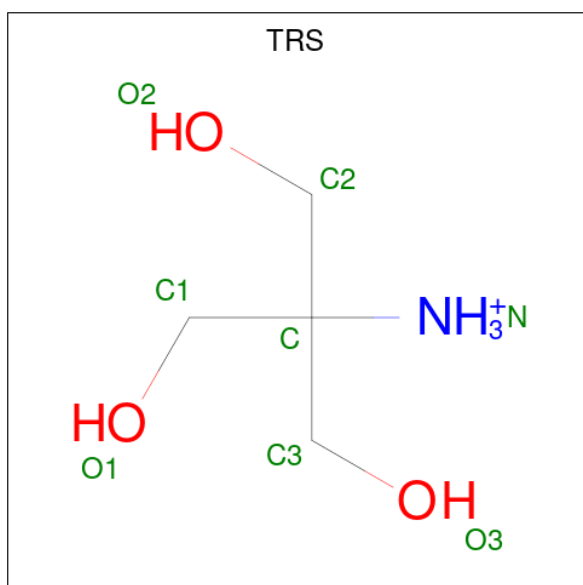
Mol	Chain	Residues	Atoms				ZeroOcc	AltConf	
			Total	C	Fe	N			O
2	A	1	86	68	2	8	8	0	1

- Molecule 3 is SULFATE ION (three-letter code: SO4) (formula: O<sub>4</sub>S).



Mol	Chain	Residues	Atoms			ZeroOcc	AltConf
			Total	O	S		
3	A	1	5	4	1	0	0

- Molecule 4 is 2-AMINO-2-HYDROXYMETHYL-PROPANE-1,3-DIOL (three-letter code: TRS) (formula: C<sub>4</sub>H<sub>12</sub>NO<sub>3</sub>).



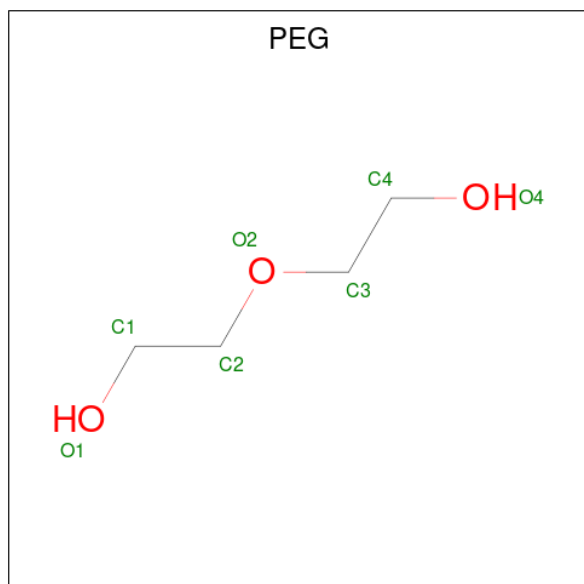
Mol	Chain	Residues	Atoms				ZeroOcc	AltConf
			Total	C	N	O		
4	A	1	8	4	1	3	0	0

- Molecule 5 is GLYCEROL (three-letter code: GOL) (formula:  $C_3H_8O_3$ ).



Mol	Chain	Residues	Atoms			ZeroOcc	AltConf
			Total	C	O		
5	A	1	6	3	3	0	0
5	A	1	6	3	3	0	0

- Molecule 6 is DI(HYDROXYETHYL)ETHER (three-letter code: PEG) (formula:  $C_4H_{10}O_3$ ).



Mol	Chain	Residues	Atoms	ZeroOcc	AltConf
6	A	1	Total C O 7 4 3	0	0
6	A	1	Total C O 7 4 3	0	0
6	A	1	Total C O 7 4 3	0	0
6	A	1	Total C O 7 4 3	0	0

- Molecule 7 is water.

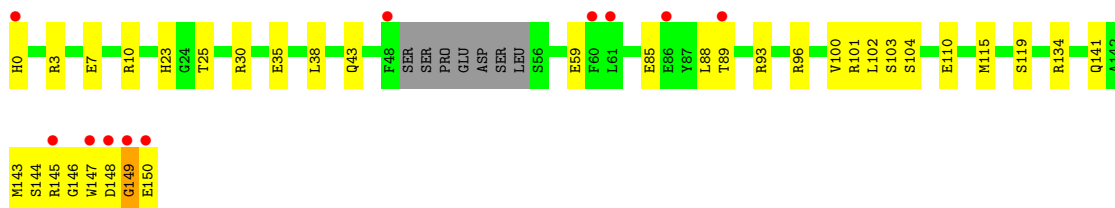
Mol	Chain	Residues	Atoms	ZeroOcc	AltConf
7	A	130	Total O 130 130	0	0

### 3 Residue-property plots [i](#)

These plots are drawn for all protein, RNA, DNA and oligosaccharide chains in the entry. The first graphic for a chain summarises the proportions of the various outlier classes displayed in the second graphic. The second graphic shows the sequence view annotated by issues in geometry and electron density. Residues are color-coded according to the number of geometric quality criteria for which they contain at least one outlier: green = 0, yellow = 1, orange = 2 and red = 3 or more. A red dot above a residue indicates a poor fit to the electron density ( $RSRZ > 2$ ). Stretches of 2 or more consecutive residues without any outlier are shown as a green connector. Residues present in the sample, but not in the model, are shown in grey.

- Molecule 1: Neuroglobin

Chain A: 





## 4 Data and refinement statistics

Property	Value	Source
Space group	P 31 2 1	Depositor
Cell constants a, b, c, $\alpha$ , $\beta$ , $\gamma$	74.79Å 74.79Å 77.13Å 90.00° 90.00° 120.00°	Depositor
Resolution (Å)	33.60 – 1.60 33.65 – 1.57	Depositor EDS
% Data completeness (in resolution range)	99.7 (33.60-1.60) 99.8 (33.65-1.57)	Depositor EDS
$R_{merge}$	(Not available)	Depositor
$R_{sym}$	(Not available)	Depositor
$\langle I/\sigma(I) \rangle$ <sup>1</sup>	1.56 (at 1.57Å)	Xtrriage
Refinement program	REFMAC 5.7.0029	Depositor
R, $R_{free}$	0.137 , 0.178 0.148 , 0.182	Depositor DCC
$R_{free}$ test set	1728 reflections (4.91%)	wwPDB-VP
Wilson B-factor (Å <sup>2</sup> )	23.5	Xtrriage
Anisotropy	0.670	Xtrriage
Bulk solvent $k_{sol}$ (e/Å <sup>3</sup> ), $B_{sol}$ (Å <sup>2</sup> )	0.33 , 51.5	EDS
L-test for twinning <sup>2</sup>	$\langle  L  \rangle = 0.49$ , $\langle L^2 \rangle = 0.32$	Xtrriage
Estimated twinning fraction	0.032 for -h,-k,l	Xtrriage
$F_o, F_c$ correlation	0.97	EDS
Total number of atoms	1663	wwPDB-VP
Average B, all atoms (Å <sup>2</sup> )	35.0	wwPDB-VP

Xtrriage's analysis on translational NCS is as follows: *The largest off-origin peak in the Patterson function is 6.43% of the height of the origin peak. No significant pseudotranslation is detected.*

<sup>1</sup>Intensities estimated from amplitudes.

<sup>2</sup>Theoretical values of  $\langle |L| \rangle$ ,  $\langle L^2 \rangle$  for acentric reflections are 0.5, 0.333 respectively for untwinned datasets, and 0.375, 0.2 for perfectly twinned datasets.

## 5 Model quality [i](#)

### 5.1 Standard geometry [i](#)

Bond lengths and bond angles in the following residue types are not validated in this section: SO4, GOL, PEG, TRS, HEM

The Z score for a bond length (or angle) is the number of standard deviations the observed value is removed from the expected value. A bond length (or angle) with  $|Z| > 5$  is considered an outlier worth inspection. RMSZ is the root-mean-square of all Z scores of the bond lengths (or angles).

Mol	Chain	Bond lengths		Bond angles	
		RMSZ	# Z  >5	RMSZ	# Z  >5
1	A	1.03	7/1517 (0.5%)	0.90	5/2042 (0.2%)

All (7) bond length outliers are listed below:

Mol	Chain	Res	Type	Atoms	Z	Observed(Å)	Ideal(Å)
1	A	148[A]	ASP	CG-OD1	8.15	1.44	1.25
1	A	148[B]	ASP	CG-OD1	8.15	1.44	1.25
1	A	148[A]	ASP	CB-CG	6.45	1.65	1.51
1	A	148[B]	ASP	CB-CG	6.45	1.65	1.51
1	A	7	GLU	CD-OE1	-5.38	1.19	1.25
1	A	149[A]	GLY	C-O	5.12	1.31	1.23
1	A	149[B]	GLY	C-O	5.12	1.31	1.23

All (5) bond angle outliers are listed below:

Mol	Chain	Res	Type	Atoms	Z	Observed(°)	Ideal(°)
1	A	3	ARG	NE-CZ-NH2	-6.73	116.94	120.30
1	A	10	ARG	NE-CZ-NH2	-5.79	117.41	120.30
1	A	3	ARG	NE-CZ-NH1	5.53	123.06	120.30
1	A	148[A]	ASP	CB-CG-OD2	-5.41	113.43	118.30
1	A	148[B]	ASP	CB-CG-OD2	-5.41	113.43	118.30

There are no chirality outliers.

There are no planarity outliers.

### 5.2 Too-close contacts [i](#)

In the following table, the Non-H and H(model) columns list the number of non-hydrogen atoms and hydrogen atoms in the chain respectively. The H(added) column lists the number of hydrogen

atoms added and optimized by MolProbity. The Clashes column lists the number of clashes within the asymmetric unit, whereas Symm-Clashes lists symmetry-related clashes.

Mol	Chain	Non-H	H(model)	H(added)	Clashes	Symm-Clashes
1	A	1394	0	1452	54	0
2	A	86	0	60	6	0
3	A	5	0	0	0	0
4	A	8	0	12	1	0
5	A	12	0	16	1	0
6	A	28	0	40	10	0
7	A	130	0	0	9	0
All	All	1663	0	1580	61	0

The all-atom clashscore is defined as the number of clashes found per 1000 atoms (including hydrogen atoms). The all-atom clashscore for this structure is 20.

All (61) close contacts within the same asymmetric unit are listed below, sorted by their clash magnitude.

Atom-1	Atom-2	Interatomic distance (Å)	Clash overlap (Å)
1:A:96[B]:ARG:HD2	1:A:147[B]:TRP:CZ3	1.77	1.20
1:A:93[B]:ARG:HG2	1:A:146[B]:GLY:O	1.48	1.09
1:A:89[B]:THR:HG22	1:A:145[B]:ARG:HB2	1.33	1.07
6:A:208:PEG:H42	7:A:398:HOH:O	1.68	0.92
1:A:96[B]:ARG:CD	1:A:147[B]:TRP:CZ3	2.59	0.86
1:A:96[B]:ARG:CD	1:A:147[B]:TRP:CE3	2.59	0.84
1:A:96[B]:ARG:HD3	1:A:147[B]:TRP:CE3	2.16	0.80
1:A:96[B]:ARG:HD2	1:A:147[B]:TRP:HZ3	1.46	0.80
1:A:89[B]:THR:CG2	1:A:145[B]:ARG:HB2	2.12	0.79
1:A:100:VAL:O	1:A:147[B]:TRP:HH2	1.68	0.77
1:A:96[B]:ARG:HD2	1:A:147[B]:TRP:CE3	2.20	0.77
1:A:85[A]:GLU:OE1	1:A:145[A]:ARG:NH2	2.19	0.74
1:A:85[A]:GLU:HG2	1:A:145[A]:ARG:HH21	1.53	0.74
1:A:23[A]:HIS:HD2	7:A:382:HOH:O	1.72	0.72
1:A:96[A]:ARG:HD2	1:A:147[A]:TRP:HA	1.78	0.65
1:A:134[B]:ARG:NH1	5:A:204:GOL:O1	2.31	0.62
1:A:102[A]:LEU:H	6:A:208:PEG:H41	1.66	0.60
2:A:201[B]:HEM:HBC2	2:A:201[B]:HEM:HHD	1.82	0.60
1:A:102[B]:LEU:H	6:A:208:PEG:H41	1.66	0.60
1:A:89[B]:THR:HG22	1:A:145[B]:ARG:CB	2.23	0.58
1:A:30[A]:ARG:CZ	6:A:209:PEG:H42	2.35	0.57
2:A:201[B]:HEM:CMB	2:A:201[B]:HEM:HBB2	2.35	0.56
2:A:201[B]:HEM:HBB2	2:A:201[B]:HEM:HMB2	1.85	0.56
1:A:93[B]:ARG:HG2	1:A:146[B]:GLY:C	2.22	0.55

*Continued on next page...*

Continued from previous page...

Atom-1	Atom-2	Interatomic distance (Å)	Clash overlap (Å)
1:A:43[A]:GLN:OE1	1:A:59[A]:GLU:HG2	2.07	0.54
1:A:96[B]:ARG:HB2	1:A:147[B]:TRP:CZ3	2.43	0.53
1:A:93[B]:ARG:HG3	1:A:146[B]:GLY:CA	2.39	0.53
1:A:147[A]:TRP:C	1:A:149[A]:GLY:N	2.63	0.52
1:A:85[A]:GLU:HG2	1:A:145[A]:ARG:NH2	2.21	0.51
4:A:203:TRS:H32	7:A:320:HOH:O	2.09	0.51
1:A:147[B]:TRP:O	1:A:149[B]:GLY:N	2.45	0.50
1:A:101[B]:ARG:HG2	6:A:208:PEG:H32	1.94	0.50
1:A:110[A]:GLU:HG2	7:A:361:HOH:O	2.12	0.49
1:A:102[A]:LEU:H	6:A:208:PEG:C4	2.26	0.48
1:A:102[B]:LEU:H	6:A:208:PEG:C4	2.27	0.48
1:A:23[A]:HIS:CD2	1:A:119:SER:HG	2.32	0.48
1:A:85[A]:GLU:CG	1:A:145[A]:ARG:HH21	2.23	0.48
1:A:96[B]:ARG:HD3	1:A:147[B]:TRP:HE3	1.71	0.48
1:A:93[B]:ARG:HG3	1:A:146[B]:GLY:HA2	1.95	0.48
1:A:96[B]:ARG:HB2	1:A:147[B]:TRP:CE3	2.48	0.47
1:A:134[B]:ARG:NH1	7:A:301:HOH:O	2.47	0.47
1:A:35[B]:GLU:OE2	1:A:104:SER:OG	2.21	0.47
1:A:30[A]:ARG:NH1	6:A:209:PEG:H42	2.30	0.46
1:A:93[B]:ARG:CG	1:A:146[B]:GLY:CA	2.93	0.46
2:A:201[A]:HEM:HMC2	2:A:201[A]:HEM:HBC2	1.97	0.46
1:A:0:HIS:CE1	7:A:301:HOH:O	2.69	0.46
2:A:201[B]:HEM:HHD	2:A:201[B]:HEM:CBC	2.46	0.46
1:A:96[B]:ARG:HB2	1:A:147[B]:TRP:CH2	2.51	0.45
1:A:101[A]:ARG:HB3	6:A:208:PEG:H32	1.97	0.45
1:A:23[A]:HIS:HE1	7:A:337:HOH:O	1.98	0.45
1:A:102[A]:LEU:HD13	7:A:339:HOH:O	2.18	0.44
1:A:85[A]:GLU:CG	1:A:145[A]:ARG:NH2	2.82	0.42
1:A:147[B]:TRP:C	1:A:149[B]:GLY:N	2.73	0.42
1:A:88:LEU:O	1:A:143[B]:MET:HG2	2.20	0.42
1:A:38:LEU:HD22	2:A:201[B]:HEM:HAC	2.02	0.41
1:A:96[B]:ARG:HA	1:A:147[B]:TRP:CH2	2.55	0.41
1:A:103:SER:OG	6:A:208:PEG:H12	2.20	0.41
1:A:134[A]:ARG:HD3	7:A:365:HOH:O	2.20	0.41
1:A:144:SER:OG	1:A:150[A]:GLU:HA	2.20	0.41

There are no symmetry-related clashes.

## 5.3 Torsion angles [i](#)

### 5.3.1 Protein backbone [i](#)

In the following table, the Percentiles column shows the percent Ramachandran outliers of the chain as a percentile score with respect to all X-ray entries followed by that with respect to entries of similar resolution.

The Analysed column shows the number of residues for which the backbone conformation was analysed, and the total number of residues.

Mol	Chain	Analysed	Favoured	Allowed	Outliers	Percentiles	
1	A	177/151 (117%)	170 (96%)	7 (4%)	0	100	100

There are no Ramachandran outliers to report.

### 5.3.2 Protein sidechains [i](#)

In the following table, the Percentiles column shows the percent sidechain outliers of the chain as a percentile score with respect to all X-ray entries followed by that with respect to entries of similar resolution.

The Analysed column shows the number of residues for which the sidechain conformation was analysed, and the total number of residues.

Mol	Chain	Analysed	Rotameric	Outliers	Percentiles	
1	A	162/131 (124%)	160 (99%)	2 (1%)	71	54

All (2) residues with a non-rotameric sidechain are listed below:

Mol	Chain	Res	Type
1	A	141[A]	GLN
1	A	141[B]	GLN

Sometimes sidechains can be flipped to improve hydrogen bonding and reduce clashes. All (1) such sidechains are listed below:

Mol	Chain	Res	Type
1	A	77	ASN

### 5.3.3 RNA [i](#)

There are no RNA molecules in this entry.

## 5.4 Non-standard residues in protein, DNA, RNA chains [i](#)

There are no non-standard protein/DNA/RNA residues in this entry.

## 5.5 Carbohydrates [i](#)

There are no monosaccharides in this entry.

## 5.6 Ligand geometry [i](#)

10 ligands are modelled in this entry.

In the following table, the Counts columns list the number of bonds (or angles) for which Mogul statistics could be retrieved, the number of bonds (or angles) that are observed in the model and the number of bonds (or angles) that are defined in the Chemical Component Dictionary. The Link column lists molecule types, if any, to which the group is linked. The Z score for a bond length (or angle) is the number of standard deviations the observed value is removed from the expected value. A bond length (or angle) with  $|Z| > 2$  is considered an outlier worth inspection. RMSZ is the root-mean-square of all Z scores of the bond lengths (or angles).

Mol	Type	Chain	Res	Link	Bond lengths			Bond angles		
					Counts	RMSZ	# Z  > 2	Counts	RMSZ	# Z  > 2
5	GOL	A	205	-	5,5,5	0.57	0	5,5,5	0.60	0
2	HEM	A	201[A]	1	42,50,50	1.57	9 (21%)	46,82,82	2.20	19 (41%)
6	PEG	A	208	-	6,6,6	0.74	0	5,5,5	0.94	0
6	PEG	A	209	-	6,6,6	0.53	0	5,5,5	0.78	0
6	PEG	A	207	-	6,6,6	0.80	0	5,5,5	1.03	0
5	GOL	A	204	-	5,5,5	0.66	0	5,5,5	0.94	0
3	SO4	A	202	-	4,4,4	0.33	0	6,6,6	0.27	0
4	TRS	A	203	-	7,7,7	1.14	1 (14%)	9,9,9	5.28	6 (66%)
6	PEG	A	206	-	6,6,6	0.49	0	5,5,5	0.18	0
2	HEM	A	201[B]	1	42,50,50	1.38	7 (16%)	46,82,82	1.88	14 (30%)

In the following table, the Chirals column lists the number of chiral outliers, the number of chiral centers analysed, the number of these observed in the model and the number defined in the Chemical Component Dictionary. Similar counts are reported in the Torsion and Rings columns. '-' means no outliers of that kind were identified.

Mol	Type	Chain	Res	Link	Chirals	Torsions	Rings
5	GOL	A	205	-	-	0/4/4/4	-
2	HEM	A	201[A]	1	-	2/12/54/54	-
6	PEG	A	208	-	-	2/4/4/4	-
6	PEG	A	209	-	-	2/4/4/4	-

*Continued on next page...*

Continued from previous page...

Mol	Type	Chain	Res	Link	Chirals	Torsions	Rings
6	PEG	A	207	-	-	3/4/4/4	-
5	GOL	A	204	-	-	2/4/4/4	-
4	TRS	A	203	-	-	6/9/9/9	-
6	PEG	A	206	-	-	1/4/4/4	-
2	HEM	A	201[B]	1	-	4/12/54/54	-

All (17) bond length outliers are listed below:

Mol	Chain	Res	Type	Atoms	Z	Observed(Å)	Ideal(Å)
2	A	201[A]	HEM	C4B-NB	-4.74	1.29	1.38
2	A	201[A]	HEM	C1B-NB	-4.23	1.32	1.40
2	A	201[B]	HEM	C1B-NB	-3.54	1.34	1.40
2	A	201[B]	HEM	C4D-ND	-3.20	1.34	1.40
2	A	201[A]	HEM	C4D-C3D	3.08	1.50	1.45
2	A	201[A]	HEM	C3C-C4C	3.03	1.45	1.41
2	A	201[B]	HEM	C4B-NB	-2.78	1.33	1.38
2	A	201[B]	HEM	C1D-C2D	2.61	1.49	1.44
2	A	201[A]	HEM	CHA-C4D	2.34	1.40	1.34
2	A	201[A]	HEM	O2D-CGD	-2.33	1.23	1.30
2	A	201[B]	HEM	CHB-C1B	2.30	1.40	1.34
2	A	201[B]	HEM	FE-NB	2.28	2.10	1.98
2	A	201[A]	HEM	C4D-ND	-2.25	1.36	1.40
4	A	203	TRS	O2-C2	2.12	1.49	1.42
2	A	201[A]	HEM	CHB-C1B	2.11	1.39	1.34
2	A	201[B]	HEM	O2A-CGA	-2.10	1.23	1.30
2	A	201[A]	HEM	O2A-CGA	-2.04	1.24	1.30

All (39) bond angle outliers are listed below:

Mol	Chain	Res	Type	Atoms	Z	Observed(°)	Ideal(°)
4	A	203	TRS	C1-C-N	-9.60	83.69	108.17
4	A	203	TRS	C3-C-N	-9.33	84.36	108.17
2	A	201[B]	HEM	CHC-C4B-NB	5.91	130.79	124.44
4	A	203	TRS	C2-C-N	-5.67	93.72	108.17
2	A	201[A]	HEM	C3B-C2B-C1B	-5.40	102.36	106.41
2	A	201[A]	HEM	C2D-C1D-ND	4.56	115.17	109.90
4	A	203	TRS	C3-C-C2	4.33	122.19	110.66
2	A	201[A]	HEM	C4B-CHC-C1C	3.62	127.33	122.56
2	A	201[A]	HEM	C3D-C4D-ND	3.60	114.12	110.17
2	A	201[A]	HEM	CHD-C1D-C2D	-3.48	119.53	125.03
2	A	201[B]	HEM	CHA-C4D-C3D	-3.34	119.06	125.23

Continued on next page...

Continued from previous page...

Mol	Chain	Res	Type	Atoms	Z	Observed(°)	Ideal(°)
2	A	201[A]	HEM	C4D-ND-C1D	-3.34	101.25	105.21
2	A	201[B]	HEM	C1B-NB-C4B	3.32	109.14	105.21
2	A	201[A]	HEM	CMC-C2C-C3C	3.31	131.31	124.68
2	A	201[A]	HEM	CMA-C3A-C4A	-3.24	123.71	128.46
2	A	201[A]	HEM	O2D-CGD-CBD	3.20	124.11	114.00
4	A	203	TRS	C2-C-C1	2.98	118.59	110.66
4	A	203	TRS	C3-C-C1	2.97	118.56	110.66
2	A	201[B]	HEM	CHA-C4D-ND	2.88	127.94	124.37
2	A	201[B]	HEM	O2A-CGA-CBA	2.72	122.60	114.00
2	A	201[A]	HEM	C1B-NB-C4B	2.71	108.41	105.21
2	A	201[B]	HEM	CHD-C1D-C2D	-2.66	120.82	125.03
2	A	201[A]	HEM	O2D-CGD-O1D	-2.64	116.53	123.33
2	A	201[A]	HEM	CBA-CAA-C2A	-2.57	108.22	112.54
2	A	201[A]	HEM	C2B-C1B-NB	2.53	112.74	109.84
2	A	201[B]	HEM	CMA-C3A-C4A	-2.46	124.85	128.46
2	A	201[A]	HEM	CBD-CAD-C3D	-2.44	105.78	112.53
2	A	201[B]	HEM	CHC-C4B-C3B	-2.38	120.93	124.57
2	A	201[A]	HEM	O2A-CGA-O1A	-2.38	117.22	123.33
2	A	201[B]	HEM	C3D-C4D-ND	2.37	112.77	110.17
2	A	201[B]	HEM	CHD-C1D-ND	2.36	126.97	124.44
2	A	201[B]	HEM	CBA-CAA-C2A	-2.29	108.69	112.54
2	A	201[A]	HEM	CMB-C2B-C1B	2.26	128.57	125.03
2	A	201[B]	HEM	CMD-C2D-C1D	2.19	128.45	125.03
2	A	201[A]	HEM	CHA-C4D-C3D	-2.14	121.27	125.23
2	A	201[B]	HEM	C1D-C2D-C3D	-2.08	104.80	106.98
2	A	201[B]	HEM	O2A-CGA-O1A	-2.07	118.02	123.33
2	A	201[A]	HEM	C4C-CHD-C1D	2.05	125.26	122.56
2	A	201[A]	HEM	O2A-CGA-CBA	2.03	120.42	114.00

There are no chirality outliers.

All (22) torsion outliers are listed below:

Mol	Chain	Res	Type	Atoms
4	A	203	TRS	C3-C-C1-O1
4	A	203	TRS	C2-C-C3-O3
4	A	203	TRS	N-C-C3-O3
5	A	204	GOL	C1-C2-C3-O3
5	A	204	GOL	O2-C2-C3-O3
6	A	207	PEG	O2-C3-C4-O4
6	A	206	PEG	O1-C1-C2-O2
6	A	208	PEG	O2-C3-C4-O4
6	A	207	PEG	O1-C1-C2-O2

Continued on next page...



*Continued from previous page...*

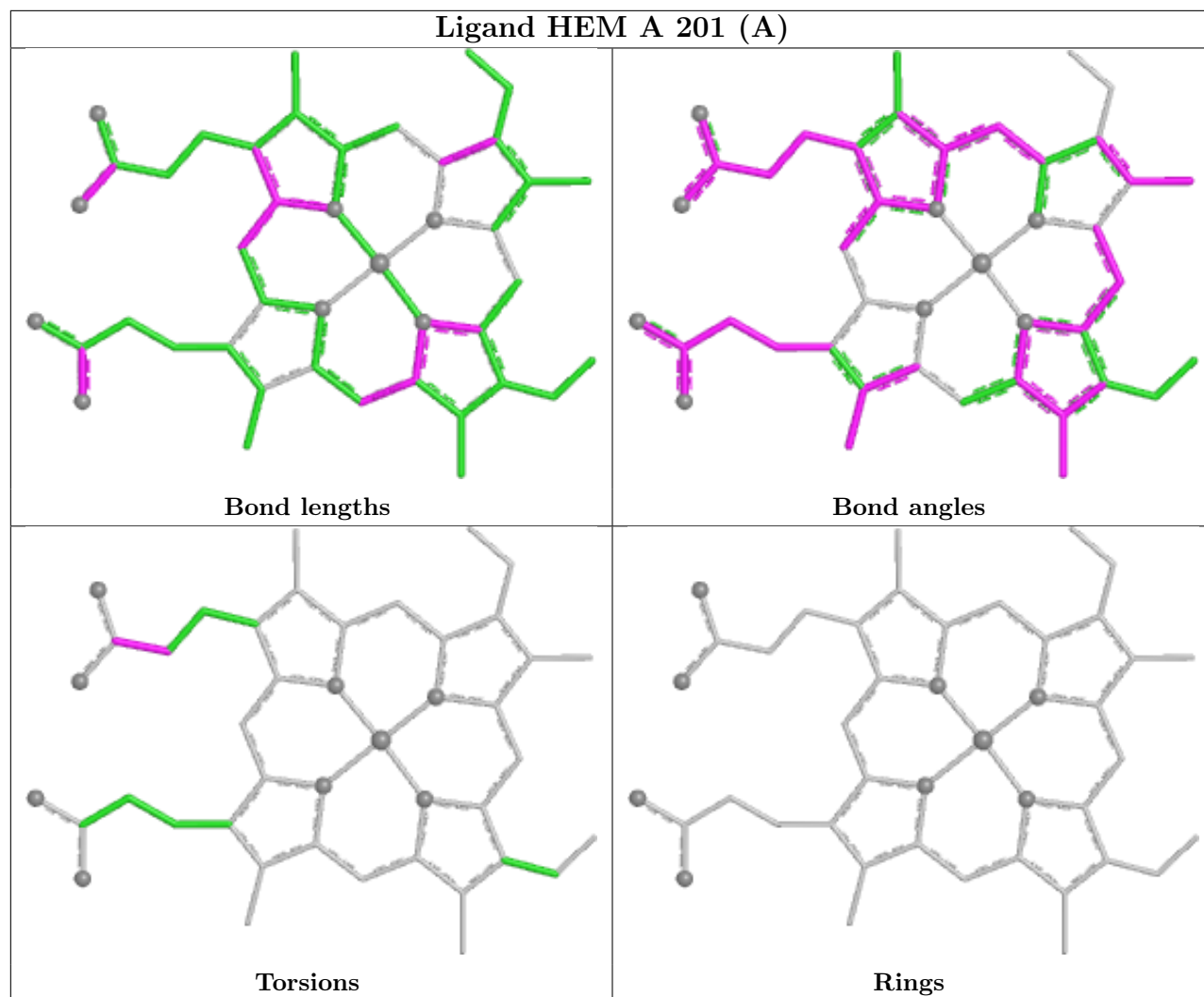
Mol	Chain	Res	Type	Atoms
6	A	209	PEG	O2-C3-C4-O4
4	A	203	TRS	C3-C-C2-O2
6	A	208	PEG	O1-C1-C2-O2
4	A	203	TRS	C2-C-C1-O1
6	A	209	PEG	O1-C1-C2-O2
4	A	203	TRS	C1-C-C2-O2
2	A	201[B]	HEM	CAA-CBA-CGA-O1A
2	A	201[A]	HEM	CAD-CBD-CGD-O1D
6	A	207	PEG	C4-C3-O2-C2
2	A	201[A]	HEM	CAD-CBD-CGD-O2D
2	A	201[B]	HEM	CAA-CBA-CGA-O2A
2	A	201[B]	HEM	CAD-CBD-CGD-O2D
2	A	201[B]	HEM	CAD-CBD-CGD-O1D

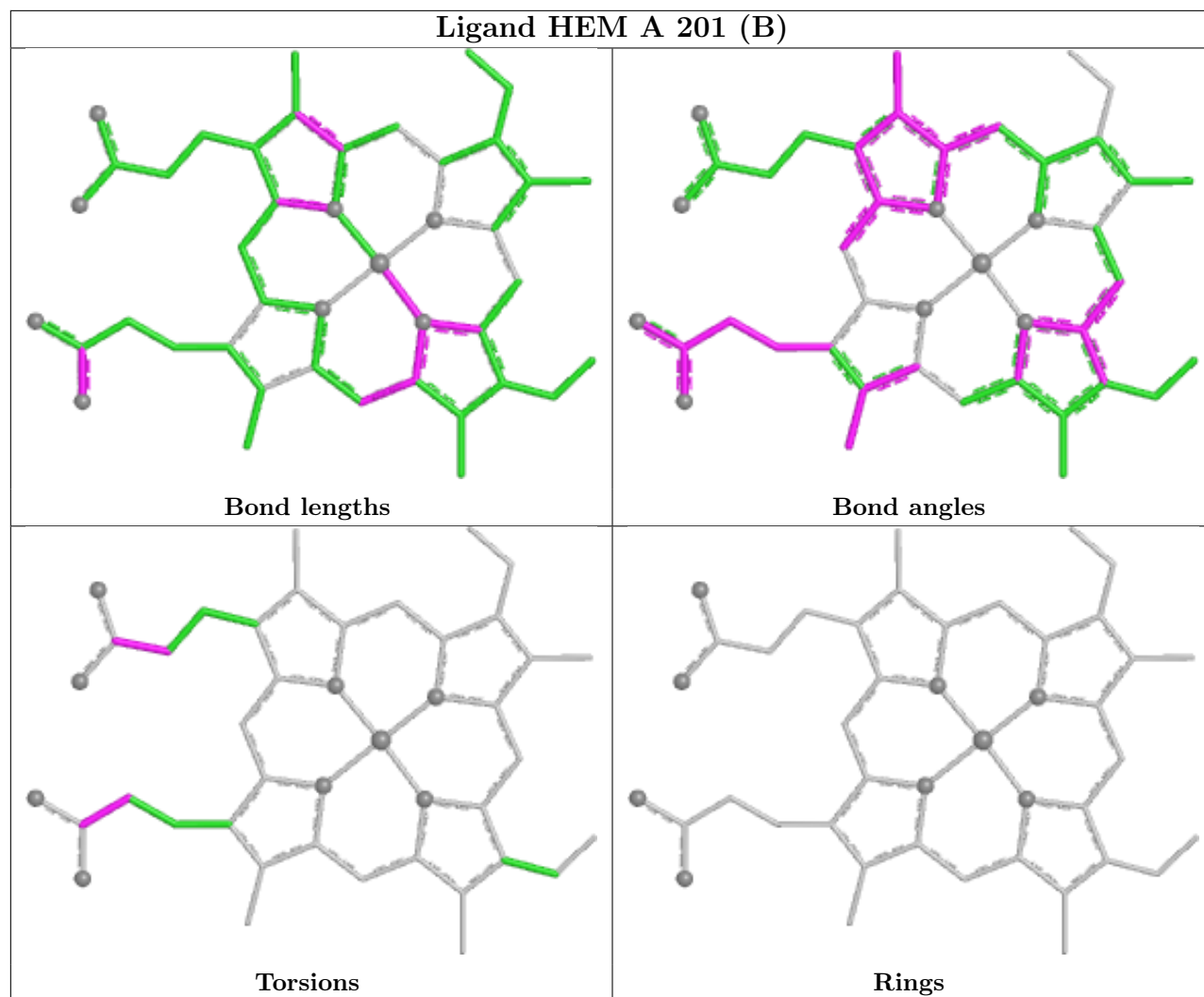
There are no ring outliers.

6 monomers are involved in 18 short contacts:

Mol	Chain	Res	Type	Clashes	Symm-Clashes
2	A	201[A]	HEM	1	0
6	A	208	PEG	8	0
6	A	209	PEG	2	0
5	A	204	GOL	1	0
4	A	203	TRS	1	0
2	A	201[B]	HEM	5	0

The following is a two-dimensional graphical depiction of Mogul quality analysis of bond lengths, bond angles, torsion angles, and ring geometry for all instances of the Ligand of Interest. In addition, ligands with molecular weight > 250 and outliers as shown on the validation Tables will also be included. For torsion angles, if less than 5% of the Mogul distribution of torsion angles is within 10 degrees of the torsion angle in question, then that torsion angle is considered an outlier. Any bond that is central to one or more torsion angles identified as an outlier by Mogul will be highlighted in the graph. For rings, the root-mean-square deviation (RMSD) between the ring in question and similar rings identified by Mogul is calculated over all ring torsion angles. If the average RMSD is greater than 60 degrees and the minimal RMSD between the ring in question and any Mogul-identified rings is also greater than 60 degrees, then that ring is considered an outlier. The outliers are highlighted in purple. The color gray indicates Mogul did not find sufficient equivalents in the CSD to analyse the geometry.





## 5.7 Other polymers [i](#)

There are no such residues in this entry.

## 5.8 Polymer linkage issues [i](#)

There are no chain breaks in this entry.

## 6 Fit of model and data [i](#)

### 6.1 Protein, DNA and RNA chains [i](#)

In the following table, the column labelled ‘#RSRZ> 2’ contains the number (and percentage) of RSRZ outliers, followed by percent RSRZ outliers for the chain as percentile scores relative to all X-ray entries and entries of similar resolution. The OWAB column contains the minimum, median, 95<sup>th</sup> percentile and maximum values of the occupancy-weighted average B-factor per residue. The column labelled ‘Q< 0.9’ lists the number of (and percentage) of residues with an average occupancy less than 0.9.

Mol	Chain	Analysed	<RSRZ>	#RSRZ>2	OWAB(Å <sup>2</sup> )	Q<0.9
1	A	144/151 (95%)	-0.02	11 (7%) <b>13</b> <b>12</b>	19, 27, 51, 116	0

All (11) RSRZ outliers are listed below:

Mol	Chain	Res	Type	RSRZ
1	A	149[A]	GLY	5.0
1	A	148[A]	ASP	4.2
1	A	48[A]	PHE	3.7
1	A	147[A]	TRP	3.3
1	A	150[A]	GLU	3.1
1	A	86[A]	GLU	2.8
1	A	145[A]	ARG	2.5
1	A	60	PHE	2.5
1	A	0	HIS	2.1
1	A	61	LEU	2.1
1	A	89[A]	THR	2.0

### 6.2 Non-standard residues in protein, DNA, RNA chains [i](#)

There are no non-standard protein/DNA/RNA residues in this entry.

### 6.3 Carbohydrates [i](#)

There are no monosaccharides in this entry.

### 6.4 Ligands [i](#)

In the following table, the Atoms column lists the number of modelled atoms in the group and the number defined in the chemical component dictionary. The B-factors column lists the minimum,

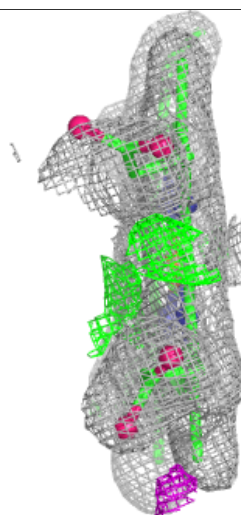
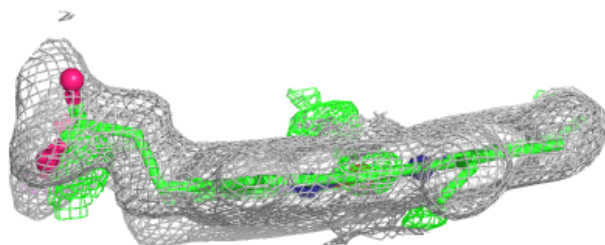
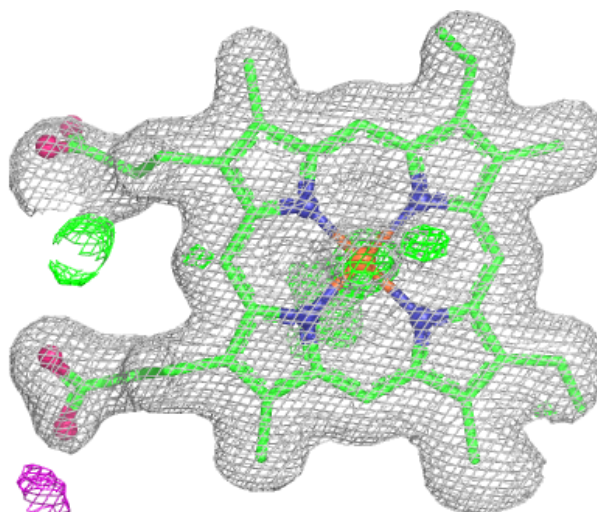
median, 95<sup>th</sup> percentile and maximum values of B factors of atoms in the group. The column labelled 'Q< 0.9' lists the number of atoms with occupancy less than 0.9.

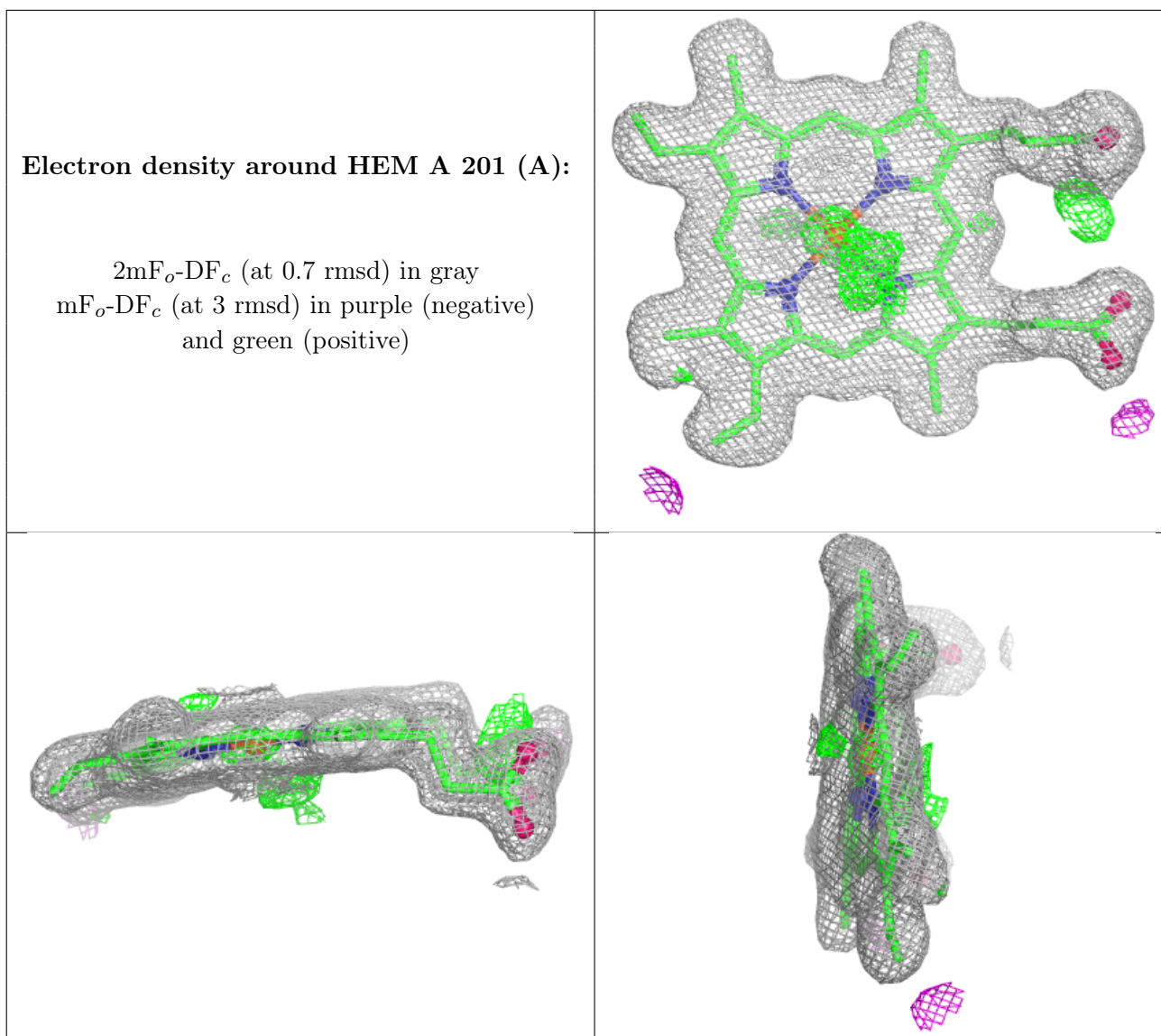
Mol	Type	Chain	Res	Atoms	RSCC	RSR	B-factors(Å <sup>2</sup> )	Q<0.9
6	PEG	A	207	7/7	0.29	0.31	60,82,95,100	0
6	PEG	A	209	7/7	0.72	0.17	61,69,86,105	0
5	GOL	A	204	6/6	0.76	0.34	57,70,71,73	0
5	GOL	A	205	6/6	0.91	0.07	37,51,52,64	0
6	PEG	A	208	7/7	0.94	0.10	47,53,67,75	0
6	PEG	A	206	7/7	0.94	0.07	69,72,77,89	0
4	TRS	A	203	8/8	0.95	0.13	46,53,63,87	0
2	HEM	A	201[B]	43/43	0.98	0.10	21,25,47,76	43
2	HEM	A	201[A]	43/43	0.98	0.10	18,23,43,50	43
3	SO4	A	202	5/5	0.99	0.05	30,34,39,44	5

The following is a graphical depiction of the model fit to experimental electron density of all instances of the Ligand of Interest. In addition, ligands with molecular weight > 250 and outliers as shown on the geometry validation Tables will also be included. Each fit is shown from different orientation to approximate a three-dimensional view.

**Electron density around HEM A 201 (B):**

$2mF_o-DF_c$  (at 0.7 rmsd) in gray  
 $mF_o-DF_c$  (at 3 rmsd) in purple (negative)  
and green (positive)





## 6.5 Other polymers [\(i\)](#)

There are no such residues in this entry.