



Full wwPDB X-ray Structure Validation Report ⓘ

Jun 25, 2024 – 09:33 AM EDT

PDB ID : 6H2K
Title : Structure of BlaC from Mycobacterium tuberculosis bound to the trans-
enamine adduct of sulbactam.
Authors : Tassoni, R.; Pannu, N.S.; Ubbink, M.
Deposited on : 2018-07-13
Resolution : 1.90 Å(reported)

This is a Full wwPDB X-ray Structure Validation Report for a publicly released PDB entry.

We welcome your comments at validation@mail.wwpdb.org

A user guide is available at

<https://www.wwpdb.org/validation/2017/XrayValidationReportHelp>

with specific help available everywhere you see the ⓘ symbol.

The types of validation reports are described at

<http://www.wwpdb.org/validation/2017/FAQs#types>.

The following versions of software and data (see [references ⓘ](#)) were used in the production of this report:

MolProbity : 4.02b-467
Mogul : 1.8.5 (274361), CSD as541be (2020)
Xtriage (Phenix) : 1.13
EDS : 2.37.1
Percentile statistics : 20191225.v01 (using entries in the PDB archive December 25th 2019)
Refmac : 5.8.0158
CCP4 : 7.0.044 (Gargrove)
Ideal geometry (proteins) : Engh & Huber (2001)
Ideal geometry (DNA, RNA) : Parkinson et al. (1996)
Validation Pipeline (wwPDB-VP) : 2.37.1

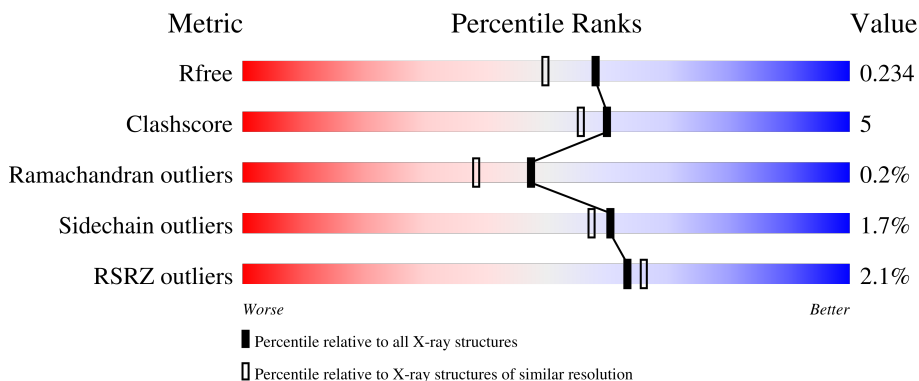
1 Overall quality at a glance

The following experimental techniques were used to determine the structure:

X-RAY DIFFRACTION

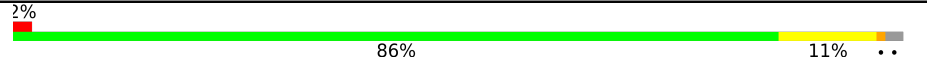
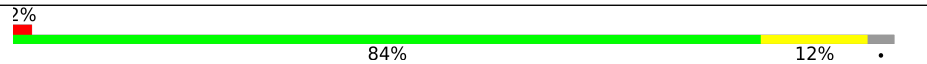
The reported resolution of this entry is 1.90 Å.

Percentile scores (ranging between 0-100) for global validation metrics of the entry are shown in the following graphic. The table shows the number of entries on which the scores are based.



Metric	Whole archive (#Entries)	Similar resolution (#Entries, resolution range(Å))
R_{free}	130704	6207 (1.90-1.90)
Clashscore	141614	6847 (1.90-1.90)
Ramachandran outliers	138981	6760 (1.90-1.90)
Sidechain outliers	138945	6760 (1.90-1.90)
RSRZ outliers	127900	6082 (1.90-1.90)

The table below summarises the geometric issues observed across the polymeric chains and their fit to the electron density. The red, orange, yellow and green segments of the lower bar indicate the fraction of residues that contain outliers for ≥ 3 , 2, 1 and 0 types of geometric quality criteria respectively. A grey segment represents the fraction of residues that are not modelled. The numeric value for each fraction is indicated below the corresponding segment, with a dot representing fractions $\leq 5\%$. The upper red bar (where present) indicates the fraction of residues that have poor fit to the electron density. The numeric value is given above the bar.

Mol	Chain	Length	Quality of chain
1	A	274	
1	B	274	

2 Entry composition

There are 6 unique types of molecules in this entry. The entry contains 4490 atoms, of which 0 are hydrogens and 0 are deuteriums.

In the tables below, the ZeroOcc column contains the number of atoms modelled with zero occupancy, the AltConf column contains the number of residues with at least one atom in alternate conformation and the Trace column contains the number of residues modelled with at most 2 atoms.

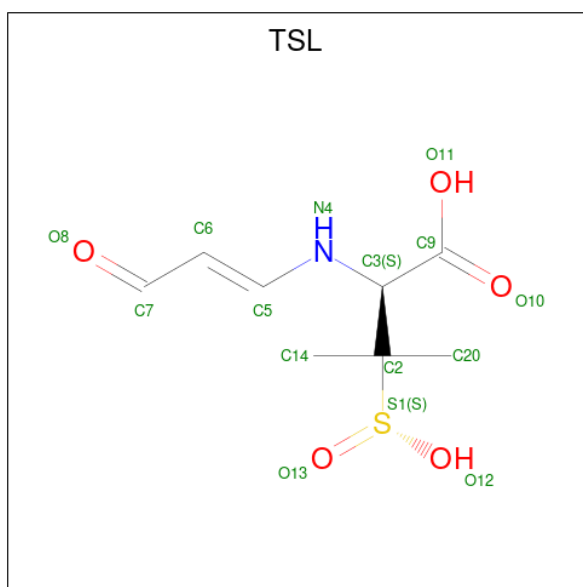
- Molecule 1 is a protein called Beta-lactamase.

Mol	Chain	Residues	Atoms					ZeroOcc	AltConf	Trace
			Total	C	N	O	S			
1	A	269	Total 2040	C 1276	N 364	O 394	S 6	0	2	0
1	B	265	Total 1993	C 1248	N 352	O 387	S 6	0	1	0

There are 18 discrepancies between the modelled and reference sequences:

Chain	Residue	Modelled	Actual	Comment	Reference
A	28	MET	-	initiating methionine	UNP A0A0T9EA39
A	294	LEU	-	expression tag	UNP A0A0T9EA39
A	295	GLU	-	expression tag	UNP A0A0T9EA39
A	296	HIS	-	expression tag	UNP A0A0T9EA39
A	297	HIS	-	expression tag	UNP A0A0T9EA39
A	298	HIS	-	expression tag	UNP A0A0T9EA39
A	299	HIS	-	expression tag	UNP A0A0T9EA39
A	300	HIS	-	expression tag	UNP A0A0T9EA39
A	301	HIS	-	expression tag	UNP A0A0T9EA39
B	28	MET	-	initiating methionine	UNP A0A0T9EA39
B	294	LEU	-	expression tag	UNP A0A0T9EA39
B	295	GLU	-	expression tag	UNP A0A0T9EA39
B	296	HIS	-	expression tag	UNP A0A0T9EA39
B	297	HIS	-	expression tag	UNP A0A0T9EA39
B	298	HIS	-	expression tag	UNP A0A0T9EA39
B	299	HIS	-	expression tag	UNP A0A0T9EA39
B	300	HIS	-	expression tag	UNP A0A0T9EA39
B	301	HIS	-	expression tag	UNP A0A0T9EA39

- Molecule 2 is TRANS-ENAMINE INTERMEDIATE OF SULBACTAM (three-letter code: TSL) (formula: C₈H₁₃NO₅S).



Mol	Chain	Residues	Atoms					ZeroOcc	AltConf
2	A	1	Total	C	N	O	S	0	0
			15	8	1	5	1		
2	B	1	Total	C	N	O	S	0	0
			15	8	1	5	1		

- Molecule 3 is DI(HYDROXYETHYL)ETHER (three-letter code: PEG) (formula: $C_4H_{10}O_3$).



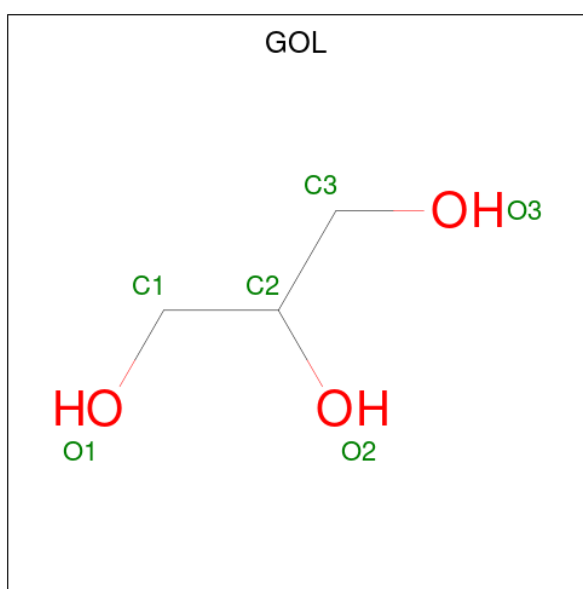
Mol	Chain	Residues	Atoms			ZeroOcc	AltConf
3	A	1	Total	C	O	0	0
			7	4	3		
3	A	1	Total	C	O	0	0
			7	4	3		

Continued on next page...

Continued from previous page...

Mol	Chain	Residues	Atoms			ZeroOcc	AltConf
3	A	1	Total	C	O	0	0
			7	4	3		
3	A	1	Total	C	O	0	0
			7	4	3		
3	A	1	Total	C	O	0	0
			7	4	3		
3	B	1	Total	C	O	0	0
			7	4	3		

- Molecule 4 is GLYCEROL (three-letter code: GOL) (formula: C₃H₈O₃).



Mol	Chain	Residues	Atoms			ZeroOcc	AltConf
4	A	1	Total	C	O	0	0
			6	3	3		
4	A	1	Total	C	O	0	0
			6	3	3		
4	B	1	Total	C	O	0	0
			6	3	3		

- Molecule 5 is ACETATE ION (three-letter code: ACT) (formula: C₂H₃O₂).



Mol	Chain	Residues	Atoms	ZeroOcc	AltConf
5	A	1	Total C O 4 2 2	0	0
5	A	1	Total C O 4 2 2	0	0
5	A	1	Total C O 4 2 2	0	0
5	B	1	Total C O 4 2 2	0	0
5	B	1	Total C O 4 2 2	0	0


- Molecule 6 is water.

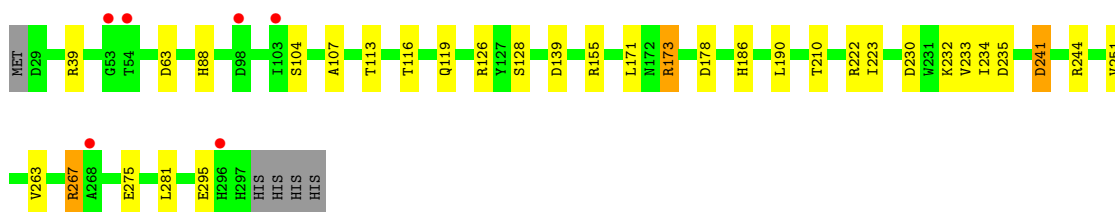
Mol	Chain	Residues	Atoms	ZeroOcc	AltConf
6	A	171	Total O 171 171	0	0
6	B	176	Total O 176 176	0	0

3 Residue-property plots [i](#)


These plots are drawn for all protein, RNA, DNA and oligosaccharide chains in the entry. The first graphic for a chain summarises the proportions of the various outlier classes displayed in the second graphic. The second graphic shows the sequence view annotated by issues in geometry and electron density. Residues are color-coded according to the number of geometric quality criteria for which they contain at least one outlier: green = 0, yellow = 1, orange = 2 and red = 3 or more. A red dot above a residue indicates a poor fit to the electron density ($RSRZ > 2$). Stretches of 2 or more consecutive residues without any outlier are shown as a green connector. Residues present in the sample, but not in the model, are shown in grey.

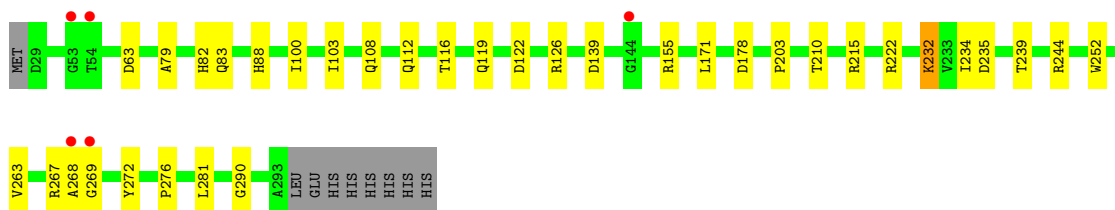
- Molecule 1: Beta-lactamase

Chain A: 



- Molecule 1: Beta-lactamase

Chain B: 



4 Data and refinement statistics

Property	Value	Source
Space group	P 1	Depositor
Cell constants a, b, c, α , β , γ	39.71Å 41.95Å 76.93Å 105.10° 89.95° 90.81°	Depositor
Resolution (Å)	40.50 – 1.90 40.50 – 1.90	Depositor EDS
% Data completeness (in resolution range)	85.9 (40.50-1.90) 85.9 (40.50-1.90)	Depositor EDS
R_{merge}	(Not available)	Depositor
R_{sym}	(Not available)	Depositor
$\langle I/\sigma(I) \rangle$ ¹	6.82 (at 1.89Å)	Xtriage
Refinement program	REFMAC 5.8.0189	Depositor
R, R_{free}	0.182 , 0.227 0.192 , 0.234	Depositor DCC
R_{free} test set	1627 reflections (5.01%)	wwPDB-VP
Wilson B-factor (Å ²)	10.7	Xtriage
Anisotropy	0.074	Xtriage
Bulk solvent k_{sol} (e/Å ³), B_{sol} (Å ²)	0.36 , 43.9	EDS
L-test for twinning ²	$\langle L \rangle = 0.49$, $\langle L^2 \rangle = 0.32$	Xtriage
Estimated twinning fraction	0.036 for h,-k,-l 0.020 for -h,k,-k-l 0.000 for -h,-k,k+l	Xtriage
F_o, F_c correlation	0.93	EDS
Total number of atoms	4490	wwPDB-VP
Average B, all atoms (Å ²)	12.0	wwPDB-VP

Xtriage's analysis on translational NCS is as follows: *The largest off-origin peak in the Patterson function is 19.23% of the height of the origin peak. No significant pseudotranslation is detected.*

¹Intensities estimated from amplitudes.

²Theoretical values of $\langle |L| \rangle$, $\langle L^2 \rangle$ for acentric reflections are 0.5, 0.333 respectively for untwinned datasets, and 0.375, 0.2 for perfectly twinned datasets.

5 Model quality [i](#)

5.1 Standard geometry [i](#)

Bond lengths and bond angles in the following residue types are not validated in this section: ACT, TSL, PEG, GOL

The Z score for a bond length (or angle) is the number of standard deviations the observed value is removed from the expected value. A bond length (or angle) with $|Z| > 5$ is considered an outlier worth inspection. RMSZ is the root-mean-square of all Z scores of the bond lengths (or angles).

Mol	Chain	Bond lengths		Bond angles	
		RMSZ	# Z >5	RMSZ	# Z >5
1	A	0.97	2/2084 (0.1%)	1.03	14/2844 (0.5%)
1	B	0.93	0/2035	1.01	13/2778 (0.5%)
All	All	0.95	2/4119 (0.0%)	1.02	27/5622 (0.5%)

All (2) bond length outliers are listed below:

Mol	Chain	Res	Type	Atoms	Z	Observed(Å)	Ideal(Å)
1	A	295	GLU	CD-OE1	-9.44	1.15	1.25
1	A	295	GLU	CD-OE2	-6.78	1.18	1.25

All (27) bond angle outliers are listed below:

Mol	Chain	Res	Type	Atoms	Z	Observed(°)	Ideal(°)
1	A	267	ARG	NE-CZ-NH1	-10.88	114.86	120.30
1	A	244	ARG	NE-CZ-NH1	9.55	125.07	120.30
1	B	244	ARG	NE-CZ-NH1	8.24	124.42	120.30
1	B	126	ARG	NE-CZ-NH2	-7.66	116.47	120.30
1	A	126	ARG	NE-CZ-NH1	7.41	124.01	120.30
1	B	155	ARG	NE-CZ-NH1	7.39	123.99	120.30
1	A	155	ARG	NE-CZ-NH1	7.05	123.83	120.30
1	B	267	ARG	NE-CZ-NH2	6.86	123.73	120.30
1	A	126	ARG	NE-CZ-NH2	-6.82	116.89	120.30
1	A	267	ARG	NE-CZ-NH2	6.71	123.66	120.30
1	B	155	ARG	NE-CZ-NH2	-6.50	117.05	120.30
1	A	155	ARG	NE-CZ-NH2	-6.32	117.14	120.30
1	A	173	ARG	NE-CZ-NH2	-6.16	117.22	120.30
1	B	222	ARG	NE-CZ-NH2	6.03	123.32	120.30
1	A	39	ARG	NE-CZ-NH2	6.00	123.30	120.30
1	B	126	ARG	NE-CZ-NH1	5.96	123.28	120.30
1	A	222	ARG	NE-CZ-NH2	5.92	123.26	120.30

Continued on next page...

Continued from previous page...

Mol	Chain	Res	Type	Atoms	Z	Observed(°)	Ideal(°)
1	B	178	ASP	CB-CG-OD1	5.91	123.61	118.30
1	A	244	ARG	NE-CZ-NH2	-5.70	117.45	120.30
1	B	267	ARG	NE-CZ-NH1	-5.61	117.49	120.30
1	A	63	ASP	CB-CG-OD2	-5.35	113.48	118.30
1	A	241	ASP	CB-CG-OD2	5.34	123.10	118.30
1	B	63	ASP	CB-CG-OD1	5.27	123.04	118.30
1	B	122	ASP	CB-CG-OD1	5.13	122.92	118.30
1	A	178	ASP	CB-CG-OD1	5.13	122.91	118.30
1	B	215	ARG	NE-CZ-NH1	-5.11	117.75	120.30
1	B	63	ASP	CB-CG-OD2	-5.11	113.70	118.30

There are no chirality outliers.

There are no planarity outliers.

5.2 Too-close contacts [i](#)

In the following table, the Non-H and H(model) columns list the number of non-hydrogen atoms and hydrogen atoms in the chain respectively. The H(added) column lists the number of hydrogen atoms added and optimized by MolProbity. The Clashes column lists the number of clashes within the asymmetric unit, whereas Symm-Clashes lists symmetry-related clashes.

Mol	Chain	Non-H	H(model)	H(added)	Clashes	Symm-Clashes
1	A	2040	0	2007	20	0
1	B	1993	0	1966	18	0
2	A	15	0	11	0	0
2	B	15	0	11	3	0
3	A	35	0	50	0	0
3	B	7	0	10	2	0
4	A	12	0	16	1	0
4	B	6	0	8	0	0
5	A	12	0	9	0	0
5	B	8	0	6	1	0
6	A	171	0	0	7	0
6	B	176	0	0	3	0
All	All	4490	0	4094	38	0

The all-atom clashscore is defined as the number of clashes found per 1000 atoms (including hydrogen atoms). The all-atom clashscore for this structure is 5.

All (38) close contacts within the same asymmetric unit are listed below, sorted by their clash magnitude.

Atom-1	Atom-2	Interatomic distance (Å)	Clash overlap (Å)
1:B:116:THR:H	1:B:119:GLN:HE21	1.29	0.80
1:A:116:THR:H	1:A:119:GLN:HE21	1.30	0.75
1:A:263[A]:VAL:HG12	1:A:281:LEU:HD22	1.69	0.74
1:B:263:VAL:HG12	1:B:281:LEU:HD22	1.73	0.71
1:A:230:ASP:OD2	6:A:601:HOH:O	2.11	0.68
1:B:82:HIS:HD2	6:B:712:HOH:O	1.79	0.64
1:B:268:ALA:HB2	6:B:732:HOH:O	1.99	0.63
1:A:232:LYS:HE2	6:A:752:HOH:O	2.02	0.57
1:A:267:ARG:HD3	1:A:275:GLU:O	2.06	0.56
1:A:171:LEU:HD11	6:A:640:HOH:O	2.07	0.54
1:A:233:VAL:O	4:A:507:GOL:H11	2.09	0.53
1:B:112:GLN:HE21	3:B:502:PEG:H42	1.74	0.53
1:A:186:HIS:NE2	1:A:190:LEU:HD11	2.26	0.51
1:B:103:ILE:HD12	2:B:501:TSL:C20	2.42	0.49
1:A:232:LYS:CD	6:A:622:HOH:O	2.60	0.49
1:A:186:HIS:CD2	1:A:190:LEU:HD11	2.48	0.48
1:A:88:HIS:HD2	6:A:756:HOH:O	1.97	0.48
1:B:112:GLN:HE21	3:B:502:PEG:C4	2.27	0.48
1:A:104:SER:HB3	1:A:107:ALA:HB3	1.96	0.47
1:A:263[A]:VAL:CG1	1:A:281:LEU:HD22	2.43	0.47
1:A:88:HIS:HE1	1:A:139:ASP:OD2	1.98	0.47
1:B:82:HIS:ND1	1:B:83:GLN:OE1	2.37	0.46
1:A:232:LYS:CE	6:A:622:HOH:O	2.64	0.46
1:B:239:THR:O	2:B:501:TSL:H5	2.17	0.45
1:A:210:THR:HG23	1:A:234:ILE:HD13	1.99	0.45
1:A:232:LYS:O	1:A:251:VAL:HA	2.16	0.44
1:A:113:THR:HG21	6:A:763:HOH:O	2.18	0.44
1:B:171:LEU:HD11	6:B:622:HOH:O	2.16	0.44
1:B:79:ALA:O	1:B:83:GLN:HG2	2.18	0.44
1:B:232:LYS:HD2	1:B:252:TRP:CE3	2.53	0.43
1:A:223:ILE:HD11	1:A:263[B]:VAL:HG22	2.00	0.43
1:B:263:VAL:CG1	1:B:281:LEU:HD22	2.45	0.43
1:B:88:HIS:HE1	1:B:139:ASP:OD2	2.02	0.43
1:B:210:THR:HG23	1:B:234:ILE:HD13	2.01	0.43
1:B:103:ILE:HD12	2:B:501:TSL:H202	2.01	0.43
1:B:100:ILE:HG21	1:B:108:GLN:NE2	2.33	0.42
1:A:173:ARG:HG2	1:A:241:ASP:OD2	2.19	0.41
1:B:290:GLY:HA3	5:B:505:ACT:O	2.21	0.41

There are no symmetry-related clashes.

5.3 Torsion angles [i](#)

5.3.1 Protein backbone [i](#)

In the following table, the Percentiles column shows the percent Ramachandran outliers of the chain as a percentile score with respect to all X-ray entries followed by that with respect to entries of similar resolution.

The Analysed column shows the number of residues for which the backbone conformation was analysed, and the total number of residues.

Mol	Chain	Analysed	Favoured	Allowed	Outliers	Percentiles	
1	A	269/274 (98%)	261 (97%)	8 (3%)	0	100	100
1	B	264/274 (96%)	256 (97%)	7 (3%)	1 (0%)	34	24
All	All	533/548 (97%)	517 (97%)	15 (3%)	1 (0%)	47	38

All (1) Ramachandran outliers are listed below:

Mol	Chain	Res	Type
1	B	269	GLY

5.3.2 Protein sidechains [i](#)

In the following table, the Percentiles column shows the percent sidechain outliers of the chain as a percentile score with respect to all X-ray entries followed by that with respect to entries of similar resolution.

The Analysed column shows the number of residues for which the sidechain conformation was analysed, and the total number of residues.

Mol	Chain	Analysed	Rotameric	Outliers	Percentiles	
1	A	208/211 (99%)	206 (99%)	2 (1%)	76	76
1	B	203/211 (96%)	198 (98%)	5 (2%)	47	41
All	All	411/422 (97%)	404 (98%)	7 (2%)	60	57

All (7) residues with a non-rotameric sidechain are listed below:

Mol	Chain	Res	Type
1	A	128	SER
1	A	235	ASP
1	B	203	PRO
1	B	232	LYS
1	B	235	ASP

Continued on next page...

Continued from previous page...

Mol	Chain	Res	Type
1	B	272	TYR
1	B	276	PRO

Sometimes sidechains can be flipped to improve hydrogen bonding and reduce clashes. All (6) such sidechains are listed below:

Mol	Chain	Res	Type
1	A	88	HIS
1	A	119	GLN
1	A	194	GLN
1	B	88	HIS
1	B	112	GLN
1	B	119	GLN

5.3.3 RNA [i](#)

There are no RNA molecules in this entry.

5.4 Non-standard residues in protein, DNA, RNA chains [i](#)

There are no non-standard protein/DNA/RNA residues in this entry.

5.5 Carbohydrates [i](#)

There are no monosaccharides in this entry.

5.6 Ligand geometry [i](#)

16 ligands are modelled in this entry.

In the following table, the Counts columns list the number of bonds (or angles) for which Mogul statistics could be retrieved, the number of bonds (or angles) that are observed in the model and the number of bonds (or angles) that are defined in the Chemical Component Dictionary. The Link column lists molecule types, if any, to which the group is linked. The Z score for a bond length (or angle) is the number of standard deviations the observed value is removed from the expected value. A bond length (or angle) with $|Z| > 2$ is considered an outlier worth inspection. RMSZ is the root-mean-square of all Z scores of the bond lengths (or angles).

Mol	Type	Chain	Res	Link	Bond lengths			Bond angles		
					Counts	RMSZ	$\# Z > 2$	Counts	RMSZ	$\# Z > 2$
3	PEG	A	503	-	6,6,6	0.67	0	5,5,5	0.45	0

Mol	Type	Chain	Res	Link	Bond lengths			Bond angles		
					Counts	RMSZ	# Z > 2	Counts	RMSZ	# Z > 2
3	PEG	A	504	-	6,6,6	0.55	0	5,5,5	0.39	0
3	PEG	A	502	-	6,6,6	0.94	0	5,5,5	1.57	0
3	PEG	A	506	-	6,6,6	0.61	0	5,5,5	0.62	0
4	GOL	B	503	-	5,5,5	0.70	0	5,5,5	0.81	0
5	ACT	A	509	-	3,3,3	0.75	0	3,3,3	0.57	0
3	PEG	A	505	-	6,6,6	0.71	0	5,5,5	0.52	0
5	ACT	B	504	-	3,3,3	0.79	0	3,3,3	1.30	0
4	GOL	A	507	-	5,5,5	0.50	0	5,5,5	1.21	1 (20%)
2	TSL	B	501	1	9,14,14	1.23	0	9,19,19	2.05	2 (22%)
3	PEG	B	502	-	6,6,6	0.43	0	5,5,5	0.64	0
5	ACT	A	511	-	3,3,3	0.68	0	3,3,3	0.90	0
5	ACT	A	510	-	3,3,3	0.94	0	3,3,3	0.66	0
2	TSL	A	501	1	9,14,14	1.57	3 (33%)	9,19,19	1.46	2 (22%)
4	GOL	A	508	-	5,5,5	0.88	0	5,5,5	1.58	1 (20%)
5	ACT	B	505	-	3,3,3	0.57	0	3,3,3	1.37	0

In the following table, the Chirals column lists the number of chiral outliers, the number of chiral centers analysed, the number of these observed in the model and the number defined in the Chemical Component Dictionary. Similar counts are reported in the Torsion and Rings columns. '-' means no outliers of that kind were identified.

Mol	Type	Chain	Res	Link	Chirals	Torsions	Rings
3	PEG	A	503	-	-	2/4/4/4	-
3	PEG	A	504	-	-	3/4/4/4	-
3	PEG	A	502	-	-	2/4/4/4	-
3	PEG	A	506	-	-	4/4/4/4	-
4	GOL	B	503	-	-	2/4/4/4	-
3	PEG	A	505	-	-	3/4/4/4	-
4	GOL	A	507	-	-	2/4/4/4	-
2	TSL	B	501	1	-	1/17/21/21	-
3	PEG	B	502	-	-	4/4/4/4	-
2	TSL	A	501	1	-	3/17/21/21	-
4	GOL	A	508	-	-	4/4/4/4	-

All (3) bond length outliers are listed below:

Mol	Chain	Res	Type	Atoms	Z	Observed(Å)	Ideal(Å)
2	A	501	TSL	C5-C6	-2.48	1.32	1.37
2	A	501	TSL	C3-N4	2.30	1.48	1.45

Continued on next page...

Continued from previous page...

Mol	Chain	Res	Type	Atoms	Z	Observed(Å)	Ideal(Å)
2	A	501	TSL	O10-C9	2.01	1.28	1.22

All (6) bond angle outliers are listed below:

Mol	Chain	Res	Type	Atoms	Z	Observed(°)	Ideal(°)
2	B	501	TSL	C14-C2-S1	4.87	119.12	107.28
2	A	501	TSL	C14-C2-S1	3.06	114.73	107.28
4	A	508	GOL	O3-C3-C2	2.53	122.35	110.20
2	B	501	TSL	C20-C2-C14	-2.46	103.67	109.56
2	A	501	TSL	C20-C2-C14	-2.46	103.67	109.56
4	A	507	GOL	O1-C1-C2	2.38	121.59	110.20

There are no chirality outliers.

All (30) torsion outliers are listed below:

Mol	Chain	Res	Type	Atoms
2	A	501	TSL	C14-C2-S1-O13
2	A	501	TSL	C5-C6-C7-O8
2	B	501	TSL	C5-C6-C7-O8
4	A	507	GOL	O2-C2-C3-O3
4	A	508	GOL	O1-C1-C2-C3
4	B	503	GOL	C1-C2-C3-O3
3	A	504	PEG	O1-C1-C2-O2
3	B	502	PEG	O2-C3-C4-O4
4	A	507	GOL	C1-C2-C3-O3
3	A	505	PEG	O2-C3-C4-O4
3	A	506	PEG	O1-C1-C2-O2
4	A	508	GOL	O1-C1-C2-O2
4	B	503	GOL	O2-C2-C3-O3
3	A	503	PEG	O2-C3-C4-O4
3	A	504	PEG	O2-C3-C4-O4
3	A	506	PEG	O2-C3-C4-O4
2	A	501	TSL	C20-C2-S1-O13
3	A	502	PEG	C4-C3-O2-C2
3	A	503	PEG	C4-C3-O2-C2
4	A	508	GOL	O2-C2-C3-O3
3	A	505	PEG	C1-C2-O2-C3
3	A	502	PEG	O1-C1-C2-O2
3	A	506	PEG	C1-C2-O2-C3
3	B	502	PEG	C1-C2-O2-C3
3	B	502	PEG	O1-C1-C2-O2
3	A	506	PEG	C4-C3-O2-C2

Continued on next page...

Continued from previous page...

Mol	Chain	Res	Type	Atoms
3	A	504	PEG	C1-C2-O2-C3
3	A	505	PEG	O1-C1-C2-O2
3	B	502	PEG	C4-C3-O2-C2
4	A	508	GOL	C1-C2-C3-O3

There are no ring outliers.

4 monomers are involved in 7 short contacts:

Mol	Chain	Res	Type	Clashes	Symm-Clashes
4	A	507	GOL	1	0
2	B	501	TSL	3	0
3	B	502	PEG	2	0
5	B	505	ACT	1	0

5.7 Other polymers [i](#)

There are no such residues in this entry.

5.8 Polymer linkage issues [i](#)

There are no chain breaks in this entry.

6 Fit of model and data [i](#)

6.1 Protein, DNA and RNA chains [i](#)

In the following table, the column labelled ‘#RSRZ > 2’ contains the number (and percentage) of RSRZ outliers, followed by percent RSRZ outliers for the chain as percentile scores relative to all X-ray entries and entries of similar resolution. The OWAB column contains the minimum, median, 95th percentile and maximum values of the occupancy-weighted average B-factor per residue. The column labelled ‘Q < 0.9’ lists the number of (and percentage) of residues with an average occupancy less than 0.9.

Mol	Chain	Analysed	<RSRZ>	#RSRZ>2	OWAB(Å ²)	Q<0.9
1	A	269/274 (98%)	-0.06	6 (2%) 62 64	4, 9, 26, 49	0
1	B	265/274 (96%)	-0.14	5 (1%) 66 69	4, 10, 23, 33	0
All	All	534/548 (97%)	-0.10	11 (2%) 63 66	4, 9, 26, 49	0

All (11) RSRZ outliers are listed below:

Mol	Chain	Res	Type	RSRZ
1	A	54	THR	4.0
1	A	53	GLY	3.6
1	A	268	ALA	3.4
1	A	98	ASP	2.9
1	A	103	ILE	2.6
1	B	54	THR	2.6
1	B	53	GLY	2.5
1	B	269	GLY	2.3
1	B	268	ALA	2.2
1	B	144	GLY	2.1
1	A	296	HIS	2.1

6.2 Non-standard residues in protein, DNA, RNA chains [i](#)

There are no non-standard protein/DNA/RNA residues in this entry.

6.3 Carbohydrates [i](#)

There are no monosaccharides in this entry.

6.4 Ligands [i](#)

In the following table, the Atoms column lists the number of modelled atoms in the group and the number defined in the chemical component dictionary. The B-factors column lists the minimum, median, 95th percentile and maximum values of B factors of atoms in the group. The column labelled 'Q< 0.9' lists the number of atoms with occupancy less than 0.9.

Mol	Type	Chain	Res	Atoms	RSCC	RSR	B-factors(Å ²)	Q<0.9
3	PEG	A	503	7/7	0.71	0.17	29,30,35,35	0
3	PEG	A	505	7/7	0.71	0.18	29,31,35,37	0
3	PEG	A	506	7/7	0.75	0.17	33,34,41,43	0
4	GOL	A	508	6/6	0.77	0.19	20,28,29,29	0
3	PEG	A	504	7/7	0.78	0.21	33,37,47,47	0
4	GOL	B	503	6/6	0.81	0.32	32,36,40,42	0
4	GOL	A	507	6/6	0.82	0.21	28,30,34,41	0
3	PEG	A	502	7/7	0.85	0.16	16,19,21,24	0
5	ACT	A	510	4/4	0.85	0.13	26,27,28,34	0
5	ACT	B	505	4/4	0.86	0.27	32,43,45,48	0
5	ACT	A	509	4/4	0.88	0.11	15,15,16,16	0
5	ACT	A	511	4/4	0.89	0.16	37,37,39,41	0
3	PEG	B	502	7/7	0.89	0.13	24,27,30,34	0
2	TSL	A	501	15/15	0.90	0.13	8,24,28,31	0
2	TSL	B	501	15/15	0.91	0.12	8,18,22,23	0
5	ACT	B	504	4/4	0.93	0.09	17,20,20,20	0

6.5 Other polymers [i](#)

There are no such residues in this entry.