



Full wwPDB X-ray Structure Validation Report ⓘ

Jun 23, 2024 – 05:29 AM EDT

PDB ID : 6GVI
Title : Crystal structure of PI3K alpha in complex with 3-(2-Amino-benzooxazol-5-yl)-1-isopropyl-1H-pyrazolo[3,4-d]pyrimidine-4,6-diamine
Authors : Ouvry, G.; Aurelly, M.; Bonnary, L.; Borde, E.; Bouix-Peter, C.; Chantalat, L.; Clary, L.; Defoin-Platel, C.; Deret, S.; Forissier, M.; Harris, C.S.; Isabet, T.; Lamy, L.; Luzy, A.P.; Pascau, J.; Soulet, C.; Taddei, A.; Taquet, N.; Tomas, L.; Thoreau, E.; Varvier, E.; Vial, E.; Hennequin, L.F.
Deposited on : 2018-06-21
Resolution : 2.90 Å(reported)

This is a Full wwPDB X-ray Structure Validation Report for a publicly released PDB entry.

We welcome your comments at validation@mail.wwpdb.org

A user guide is available at

<https://www.wwpdb.org/validation/2017/XrayValidationReportHelp>

with specific help available everywhere you see the ⓘ symbol.

The types of validation reports are described at

<http://www.wwpdb.org/validation/2017/FAQs#types>.

The following versions of software and data (see [references ⓘ](#)) were used in the production of this report:

MolProbity : 4.02b-467
Mogul : 2022.3.0, CSD as543be (2022)
Xtriage (Phenix) : 1.20.1
EDS : 2.37.1
buster-report : 1.1.7 (2018)
Percentile statistics : 20191225.v01 (using entries in the PDB archive December 25th 2019)
Refmac : 5.8.0158
CCP4 : 7.0.044 (Gargrove)
Ideal geometry (proteins) : Engh & Huber (2001)

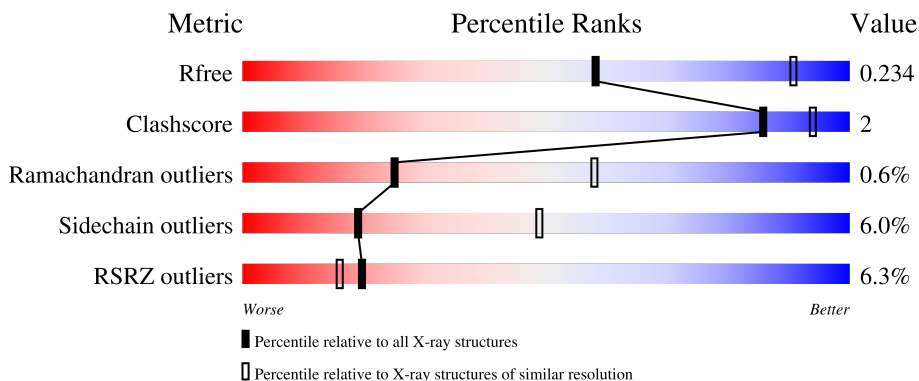
1 Overall quality at a glance

The following experimental techniques were used to determine the structure:

X-RAY DIFFRACTION

The reported resolution of this entry is 2.90 Å.

Percentile scores (ranging between 0-100) for global validation metrics of the entry are shown in the following graphic. The table shows the number of entries on which the scores are based.



Metric	Whole archive (#Entries)	Similar resolution (#Entries, resolution range(Å))
R_{free}	130704	1957 (2.90-2.90)
Clashscore	141614	2172 (2.90-2.90)
Ramachandran outliers	138981	2115 (2.90-2.90)
Sidechain outliers	138945	2117 (2.90-2.90)
RSRZ outliers	127900	1906 (2.90-2.90)

The table below summarises the geometric issues observed across the polymeric chains and their fit to the electron density. The red, orange, yellow and green segments of the lower bar indicate the fraction of residues that contain outliers for ≥ 3 , 2, 1 and 0 types of geometric quality criteria respectively. A grey segment represents the fraction of residues that are not modelled. The numeric value for each fraction is indicated below the corresponding segment, with a dot representing fractions $\leq 5\%$. The upper red bar (where present) indicates the fraction of residues that have poor fit to the electron density. The numeric value is given above the bar.

Mol	Chain	Length	Quality of chain
1	A	962	

Ideal geometry (DNA, RNA) : Parkinson et al. (1996)
 Validation Pipeline (wwPDB-VP) : 2.37.1

2 Entry composition i

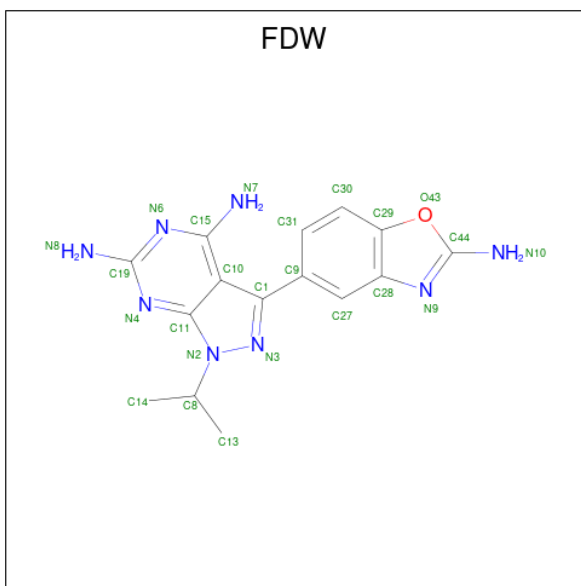
There are 3 unique types of molecules in this entry. The entry contains 7448 atoms, of which 0 are hydrogens and 0 are deuteriums.

In the tables below, the ZeroOcc column contains the number of atoms modelled with zero occupancy, the AltConf column contains the number of residues with at least one atom in alternate conformation and the Trace column contains the number of residues modelled with at most 2 atoms.

- Molecule 1 is a protein called Phosphatidylinositol 4,5-bisphosphate 3-kinase catalytic sub-unit alpha isoform.

Mol	Chain	Residues	Atoms					ZeroOcc	AltConf	Trace
			Total	C	N	O	S			
1	A	910	7397	4715	1267	1353	62	10	2	0

- Molecule 2 is 3-(2-azanyl-1,3-benzoxazol-5-yl)-1-propan-2-yl-pyrazolo[3,4-d]pyrimidine-4,6-diamine (three-letter code: FDW) (formula: C₁₅H₁₆N₈O).



Mol	Chain	Residues	Atoms				ZeroOcc	AltConf
			Total	C	N	O		
2	A	1	24	15	8	1	0	0

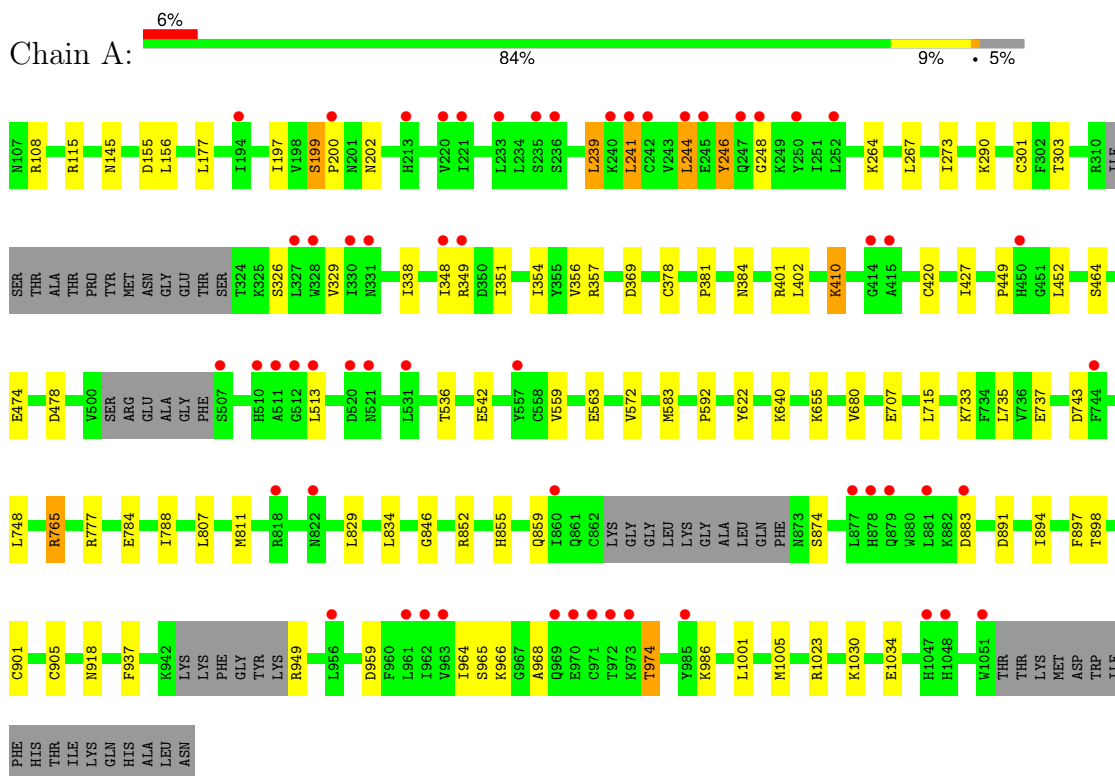
- Molecule 3 is water.

Mol	Chain	Residues	Atoms		ZeroOcc	AltConf
3	A	27	Total	O	0	0
			27	27		

3 Residue-property plots

These plots are drawn for all protein, RNA, DNA and oligosaccharide chains in the entry. The first graphic for a chain summarises the proportions of the various outlier classes displayed in the second graphic. The second graphic shows the sequence view annotated by issues in geometry and electron density. Residues are color-coded according to the number of geometric quality criteria for which they contain at least one outlier: green = 0, yellow = 1, orange = 2 and red = 3 or more. A red dot above a residue indicates a poor fit to the electron density ($RSRZ > 2$). Stretches of 2 or more consecutive residues without any outlier are shown as a green connector. Residues present in the sample, but not in the model, are shown in grey.

- Molecule 1: Phosphatidylinositol 4,5-bisphosphate 3-kinase catalytic subunit alpha isoform



4 Data and refinement statistics

Property	Value	Source
Space group	P 21 21 21	Depositor
Cell constants a, b, c, α , β , γ	59.33Å 135.78Å 143.15Å 90.00° 90.00° 90.00°	Depositor
Resolution (Å)	43.15 – 2.90 43.29 – 2.90	Depositor EDS
% Data completeness (in resolution range)	76.5 (43.15-2.90) 76.5 (43.29-2.90)	Depositor EDS
R_{merge}	(Not available)	Depositor
R_{sym}	(Not available)	Depositor
$\langle I/\sigma(I) \rangle$ ¹	1.84 (at 2.90Å)	Xtrriage
Refinement program	BUSTER 2.10.3	Depositor
R, R_{free}	0.180 , 0.232 0.194 , 0.234	Depositor DCC
R_{free} test set	981 reflections (4.86%)	wwPDB-VP
Wilson B-factor (Å ²)	94.2	Xtrriage
Anisotropy	0.042	Xtrriage
Bulk solvent k_{sol} (e/Å ³), B_{sol} (Å ²)	0.31 , 79.3	EDS
L-test for twinning ²	$\langle L \rangle = 0.48$, $\langle L^2 \rangle = 0.31$	Xtrriage
Estimated twinning fraction	No twinning to report.	Xtrriage
F_o, F_c correlation	0.94	EDS
Total number of atoms	7448	wwPDB-VP
Average B, all atoms (Å ²)	111.0	wwPDB-VP

Xtrriage's analysis on translational NCS is as follows: *The largest off-origin peak in the Patterson function is 4.37% of the height of the origin peak. No significant pseudotranslation is detected.*

¹Intensities estimated from amplitudes.

²Theoretical values of $\langle |L| \rangle$, $\langle L^2 \rangle$ for acentric reflections are 0.5, 0.333 respectively for untwinned datasets, and 0.375, 0.2 for perfectly twinned datasets.

5 Model quality [i](#)

5.1 Standard geometry [i](#)

Bond lengths and bond angles in the following residue types are not validated in this section: FDW

The Z score for a bond length (or angle) is the number of standard deviations the observed value is removed from the expected value. A bond length (or angle) with $|Z| > 5$ is considered an outlier worth inspection. RMSZ is the root-mean-square of all Z scores of the bond lengths (or angles).

Mol	Chain	Bond lengths		Bond angles	
		RMSZ	# Z >5	RMSZ	# Z >5
1	A	0.50	0/7561	0.66	0/10231

There are no bond length outliers.

There are no bond angle outliers.

There are no chirality outliers.

There are no planarity outliers.

5.2 Too-close contacts [i](#)

In the following table, the Non-H and H(model) columns list the number of non-hydrogen atoms and hydrogen atoms in the chain respectively. The H(added) column lists the number of hydrogen atoms added and optimized by MolProbity. The Clashes column lists the number of clashes within the asymmetric unit, whereas Symm-Clashes lists symmetry-related clashes.

Mol	Chain	Non-H	H(model)	H(added)	Clashes	Symm-Clashes
1	A	7397	0	7303	32	0
2	A	24	0	0	0	0
3	A	27	0	0	1	0
All	All	7448	0	7303	32	0

The all-atom clashscore is defined as the number of clashes found per 1000 atoms (including hydrogen atoms). The all-atom clashscore for this structure is 2.

All (32) close contacts within the same asymmetric unit are listed below, sorted by their clash magnitude.

Atom-1	Atom-2	Interatomic distance (Å)	Clash overlap (Å)
1:A:199:SER:HB2	1:A:200:PRO:CD	2.17	0.73

Continued on next page...

Continued from previous page...

Atom-1	Atom-2	Interatomic distance (Å)	Clash overlap (Å)
1:A:354:ILE:HD11	1:A:381:PRO:HB3	1.71	0.70
1:A:241:LEU:HD23	1:A:244:LEU:HA	1.78	0.65
1:A:199:SER:HB2	1:A:200:PRO:HD3	1.82	0.60
1:A:199:SER:CB	1:A:200:PRO:CD	2.82	0.58
1:A:807:LEU:HD12	1:A:846:GLY:HA3	1.88	0.55
1:A:592:PRO:HB2	1:A:622:TYR:HE2	1.72	0.55
1:A:449:PRO:HD2	1:A:452:LEU:HD13	1.90	0.53
1:A:326:SER:O	1:A:329:VAL:HG22	2.10	0.52
1:A:1030:LYS:HE2	1:A:1034:GLU:HB3	1.92	0.51
1:A:572:VAL:HG21	1:A:583:MET:HG2	1.94	0.49
1:A:351:ILE:HD13	1:A:410:LYS:HD3	1.93	0.49
1:A:267:LEU:HG	1:A:273:ILE:HG13	1.95	0.49
1:A:855:HIS:HB3	1:A:859:GLN:HG3	1.95	0.49
1:A:402:LEU:HD23	1:A:427:ILE:HD12	1.93	0.49
1:A:765:ARG:HD3	1:A:784:GLU:HG3	1.96	0.48
1:A:829:LEU:HD11	1:A:986:LYS:HB3	1.96	0.48
1:A:707:GLU:HB3	3:A:1201:HOH:O	2.15	0.47
1:A:199:SER:HB2	1:A:200:PRO:HD2	1.95	0.47
1:A:898:THR:HG22	1:A:964:ILE:HG12	1.99	0.43
1:A:765:ARG:HD2	1:A:765:ARG:HA	1.84	0.42
1:A:965:SER:HB3	1:A:968:ALA:HB3	2.02	0.42
1:A:1001:LEU:O	1:A:1005:MET:HG2	2.19	0.42
1:A:855:HIS:HB3	1:A:859:GLN:CG	2.51	0.41
1:A:715:LEU:HD21	1:A:735:LEU:HD12	2.03	0.41
1:A:733:LYS:HE2	1:A:737:GLU:OE1	2.21	0.41
1:A:338:ILE:HD12	1:A:356:VAL:HG11	2.04	0.41
1:A:248:GLY:O	1:A:290:LYS:HD2	2.21	0.40
1:A:897:PHE:O	1:A:901:CYS:HB2	2.22	0.40
1:A:965:SER:OG	1:A:974:THR:HG21	2.21	0.40
1:A:640:LYS:HE2	1:A:680:VAL:HG11	2.02	0.40
1:A:894:ILE:HG21	1:A:966:LYS:HG2	2.04	0.40

There are no symmetry-related clashes.

5.3 Torsion angles [i](#)

5.3.1 Protein backbone [i](#)

In the following table, the Percentiles column shows the percent Ramachandran outliers of the chain as a percentile score with respect to all X-ray entries followed by that with respect to entries of similar resolution.

The Analysed column shows the number of residues for which the backbone conformation was analysed, and the total number of residues.

Mol	Chain	Analysed	Favoured	Allowed	Outliers	Percentiles
1	A	902/962 (94%)	854 (95%)	43 (5%)	5 (1%)	25 58

All (5) Ramachandran outliers are listed below:

Mol	Chain	Res	Type
1	A	199	SER
1	A	264	LYS
1	A	246	TYR
1	A	202	ASN
1	A	239	LEU

5.3.2 Protein sidechains [i](#)

In the following table, the Percentiles column shows the percent sidechain outliers of the chain as a percentile score with respect to all X-ray entries followed by that with respect to entries of similar resolution.

The Analysed column shows the number of residues for which the sidechain conformation was analysed, and the total number of residues.

Mol	Chain	Analysed	Rotameric	Outliers	Percentiles
1	A	821/875 (94%)	772 (94%)	49 (6%)	19 49

All (49) residues with a non-rotameric sidechain are listed below:

Mol	Chain	Res	Type
1	A	108	ARG
1	A	115	ARG
1	A	145	ASN
1	A	155	ASP
1	A	156	LEU
1	A	177	LEU
1	A	197	ILE
1	A	239	LEU
1	A	241	LEU
1	A	244	LEU
1	A	246	TYR
1	A	301	CYS
1	A	303	THR
1	A	348	ILE

Continued on next page...

Continued from previous page...

Mol	Chain	Res	Type
1	A	349	ARG
1	A	357	ARG
1	A	369	ASP
1	A	378	CYS
1	A	384	ASN
1	A	401	ARG
1	A	410	LYS
1	A	420	CYS
1	A	464	SER
1	A	474	GLU
1	A	478	ASP
1	A	513	LEU
1	A	536	THR
1	A	542	GLU
1	A	559	VAL
1	A	563	GLU
1	A	655	LYS
1	A	743	ASP
1	A	748	LEU
1	A	765	ARG
1	A	777	ARG
1	A	788	ILE
1	A	811	MET
1	A	834	LEU
1	A	852	ARG
1	A	874	SER
1	A	883	ASP
1	A	891	ASP
1	A	905	CYS
1	A	918	ASN
1	A	937	PHE
1	A	949	ARG
1	A	959	ASP
1	A	974	THR
1	A	1023	ARG

Sometimes sidechains can be flipped to improve hydrogen bonding and reduce clashes. All (1) such sidechains are listed below:

Mol	Chain	Res	Type
1	A	721	GLN

5.3.3 RNA [i](#)

There are no RNA molecules in this entry.

5.4 Non-standard residues in protein, DNA, RNA chains [i](#)

There are no non-standard protein/DNA/RNA residues in this entry.

5.5 Carbohydrates [i](#)

There are no monosaccharides in this entry.

5.6 Ligand geometry [i](#)

1 ligand is modelled in this entry.

In the following table, the Counts columns list the number of bonds (or angles) for which Mogul statistics could be retrieved, the number of bonds (or angles) that are observed in the model and the number of bonds (or angles) that are defined in the Chemical Component Dictionary. The Link column lists molecule types, if any, to which the group is linked. The Z score for a bond length (or angle) is the number of standard deviations the observed value is removed from the expected value. A bond length (or angle) with $|Z| > 2$ is considered an outlier worth inspection. RMSZ is the root-mean-square of all Z scores of the bond lengths (or angles).

Mol	Type	Chain	Res	Link	Bond lengths			Bond angles		
					Counts	RMSZ	# Z > 2	Counts	RMSZ	# Z > 2
2	FDW	A	1101	-	23,27,27	1.86	7 (30%)	25,41,41	2.49	10 (40%)

In the following table, the Chirals column lists the number of chiral outliers, the number of chiral centers analysed, the number of these observed in the model and the number defined in the Chemical Component Dictionary. Similar counts are reported in the Torsion and Rings columns. '-' means no outliers of that kind were identified.

Mol	Type	Chain	Res	Link	Chirals	Torsions	Rings
2	FDW	A	1101	-	-	4/8/8/8	0/4/4/4

All (7) bond length outliers are listed below:

Mol	Chain	Res	Type	Atoms	Z	Observed(Å)	Ideal(Å)
2	A	1101	FDW	C9-C1	-4.68	1.42	1.49
2	A	1101	FDW	C19-N6	3.95	1.42	1.35
2	A	1101	FDW	C30-C29	-3.26	1.35	1.39

Continued on next page...

Continued from previous page...

Mol	Chain	Res	Type	Atoms	Z	Observed(Å)	Ideal(Å)
2	A	1101	FDW	C15-N6	2.70	1.38	1.33
2	A	1101	FDW	C19-N8	2.11	1.38	1.33
2	A	1101	FDW	C11-N4	2.11	1.38	1.35
2	A	1101	FDW	C44-N9	2.05	1.37	1.35

All (10) bond angle outliers are listed below:

Mol	Chain	Res	Type	Atoms	Z	Observed(°)	Ideal(°)
2	A	1101	FDW	C31-C9-C1	-4.67	112.78	120.62
2	A	1101	FDW	N10-C44-N9	4.53	128.93	123.19
2	A	1101	FDW	C31-C30-C29	-4.52	113.66	118.33
2	A	1101	FDW	C19-N4-C11	-4.07	111.10	115.48
2	A	1101	FDW	C1-N3-N2	3.89	108.28	105.17
2	A	1101	FDW	C31-C9-C27	3.57	123.95	118.03
2	A	1101	FDW	C14-C8-N2	3.49	113.58	109.48
2	A	1101	FDW	C9-C1-N3	-3.34	115.06	120.78
2	A	1101	FDW	C9-C27-C28	-2.64	113.17	121.83
2	A	1101	FDW	C30-C29-C28	2.36	124.65	120.35

There are no chirality outliers.

All (4) torsion outliers are listed below:

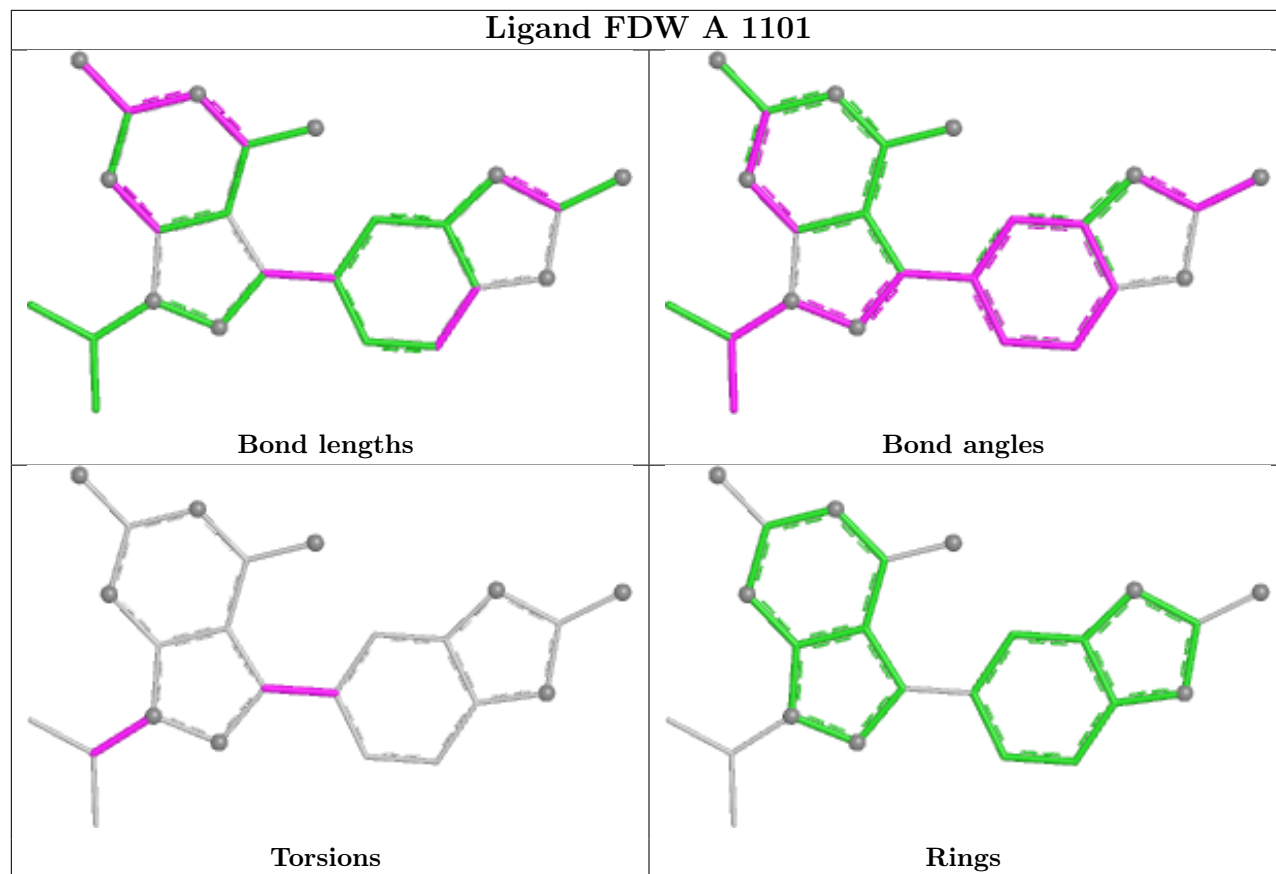
Mol	Chain	Res	Type	Atoms
2	A	1101	FDW	C14-C8-N2-N3
2	A	1101	FDW	N3-C1-C9-C31
2	A	1101	FDW	N3-C1-C9-C27
2	A	1101	FDW	C14-C8-N2-C11

There are no ring outliers.

No monomer is involved in short contacts.

The following is a two-dimensional graphical depiction of Mogul quality analysis of bond lengths, bond angles, torsion angles, and ring geometry for all instances of the Ligand of Interest. In addition, ligands with molecular weight > 250 and outliers as shown on the validation Tables will also be included. For torsion angles, if less than 5% of the Mogul distribution of torsion angles is within 10 degrees of the torsion angle in question, then that torsion angle is considered an outlier. Any bond that is central to one or more torsion angles identified as an outlier by Mogul will be highlighted in the graph. For rings, the root-mean-square deviation (RMSD) between the ring in question and similar rings identified by Mogul is calculated over all ring torsion angles. If the average RMSD is greater than 60 degrees and the minimal RMSD between the ring in question and any Mogul-identified rings is also greater than 60 degrees, then that ring is considered an outlier. The outliers are highlighted in purple. The color gray indicates Mogul did not find sufficient

equivalents in the CSD to analyse the geometry.



5.7 Other polymers [i](#)

There are no such residues in this entry.

5.8 Polymer linkage issues [i](#)

There are no chain breaks in this entry.

6 Fit of model and data [i](#)

6.1 Protein, DNA and RNA chains [i](#)

In the following table, the column labelled ‘#RSRZ > 2’ contains the number (and percentage) of RSRZ outliers, followed by percent RSRZ outliers for the chain as percentile scores relative to all X-ray entries and entries of similar resolution. The OWAB column contains the minimum, median, 95th percentile and maximum values of the occupancy-weighted average B-factor per residue. The column labelled ‘Q < 0.9’ lists the number of (and percentage) of residues with an average occupancy less than 0.9.

Mol	Chain	Analysed	<RSRZ>	#RSRZ>2	OWAB(Å ²)	Q<0.9
1	A	910/962 (94%)	0.37	57 (6%) 20 16	56, 107, 177, 236	4 (0%)

All (57) RSRZ outliers are listed below:

Mol	Chain	Res	Type	RSRZ
1	A	349	ARG	5.9
1	A	240	LYS	5.7
1	A	1051	TRP	4.9
1	A	520	ASP	4.9
1	A	244	LEU	4.5
1	A	245	GLU	4.4
1	A	220	VAL	4.1
1	A	236	SER	3.8
1	A	521	ASN	3.7
1	A	883	ASP	3.7
1	A	970	GLU	3.5
1	A	1047	HIS	3.4
1	A	328	TRP	3.4
1	A	252	LEU	3.4
1	A	881	LEU	3.3
1	A	511	ALA	3.3
1	A	969	GLN	3.3
1	A	235	SER	3.3
1	A	557	TYR	3.2
1	A	414	GLY	3.1
1	A	512	GLY	3.1
1	A	513	LEU	3.0
1	A	879	GLN	2.9
1	A	877	LEU	2.9
1	A	450	HIS	2.8
1	A	250	TYR	2.8
1	A	878	HIS	2.7

Continued on next page...

Continued from previous page...

Mol	Chain	Res	Type	RSRZ
1	A	200	PRO	2.7
1	A	860	ILE	2.7
1	A	822	ASN	2.7
1	A	233	LEU	2.7
1	A	973	LYS	2.6
1	A	972	THR	2.6
1	A	971	CYS	2.5
1	A	348	ILE	2.4
1	A	327	LEU	2.4
1	A	510	HIS	2.3
1	A	531	LEU	2.3
1	A	221	ILE	2.3
1	A	331	ASN	2.3
1	A	241	LEU	2.3
1	A	415	ALA	2.3
1	A	507	SER	2.3
1	A	1048	HIS	2.3
1	A	985	TYR	2.3
1	A	963	VAL	2.2
1	A	247	GLN	2.2
1	A	744	PHE	2.2
1	A	962	ILE	2.2
1	A	194	ILE	2.2
1	A	248	GLY	2.1
1	A	961	LEU	2.1
1	A	242	CYS	2.1
1	A	213	HIS	2.1
1	A	956	LEU	2.1
1	A	818	ARG	2.1
1	A	330	ILE	2.1

6.2 Non-standard residues in protein, DNA, RNA chains [i](#)

There are no non-standard protein/DNA/RNA residues in this entry.

6.3 Carbohydrates [i](#)

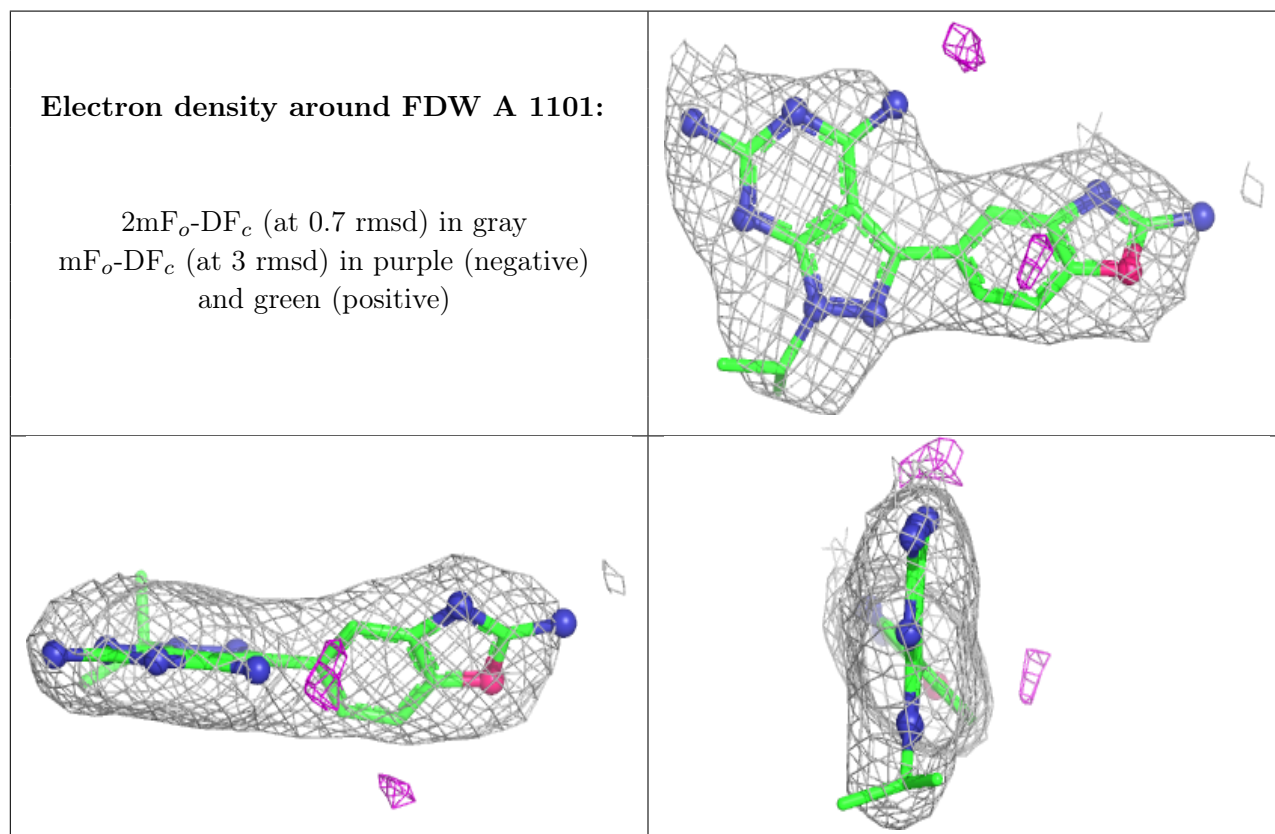
There are no monosaccharides in this entry.

6.4 Ligands [i](#)

In the following table, the Atoms column lists the number of modelled atoms in the group and the number defined in the chemical component dictionary. The B-factors column lists the minimum, median, 95th percentile and maximum values of B factors of atoms in the group. The column labelled 'Q< 0.9' lists the number of atoms with occupancy less than 0.9.

Mol	Type	Chain	Res	Atoms	RSCC	RSR	B-factors(\AA^2)	Q<0.9
2	FDW	A	1101	24/24	0.97	0.21	74,84,91,92	0

The following is a graphical depiction of the model fit to experimental electron density of all instances of the Ligand of Interest. In addition, ligands with molecular weight > 250 and outliers as shown on the geometry validation Tables will also be included. Each fit is shown from different orientation to approximate a three-dimensional view.



6.5 Other polymers [i](#)

There are no such residues in this entry.