



# Full wwPDB X-ray Structure Validation Report ⓘ

Jun 24, 2024 – 09:13 AM EDT

PDB ID : 6GD4  
Title : Trypanosoma brucei PTR1 in complex with inhibitor 4c (F188)  
Authors : Landi, G.; Pozzi, C.; Mangani, S.  
Deposited on : 2018-04-21  
Resolution : 1.42 Å(reported)

This is a Full wwPDB X-ray Structure Validation Report for a publicly released PDB entry.

We welcome your comments at [validation@mail.wwpdb.org](mailto:validation@mail.wwpdb.org)

A user guide is available at

<https://www.wwpdb.org/validation/2017/XrayValidationReportHelp>

with specific help available everywhere you see the ⓘ symbol.

The types of validation reports are described at

<http://www.wwpdb.org/validation/2017/FAQs#types>.

---

The following versions of software and data (see [references ⓘ](#)) were used in the production of this report:

MolProbity : 4.02b-467  
Mogul : 1.8.5 (274361), CSD as541be (2020)  
Xtriage (Phenix) : 1.13  
EDS : 2.37.1  
buster-report : 1.1.7 (2018)  
Percentile statistics : 20191225.v01 (using entries in the PDB archive December 25th 2019)  
Refmac : 5.8.0158  
CCP4 : 7.0.044 (Gargrove)  
Ideal geometry (proteins) : Engh & Huber (2001)  
Ideal geometry (DNA, RNA) : Parkinson et al. (1996)  
Validation Pipeline (wwPDB-VP) : 2.37.1

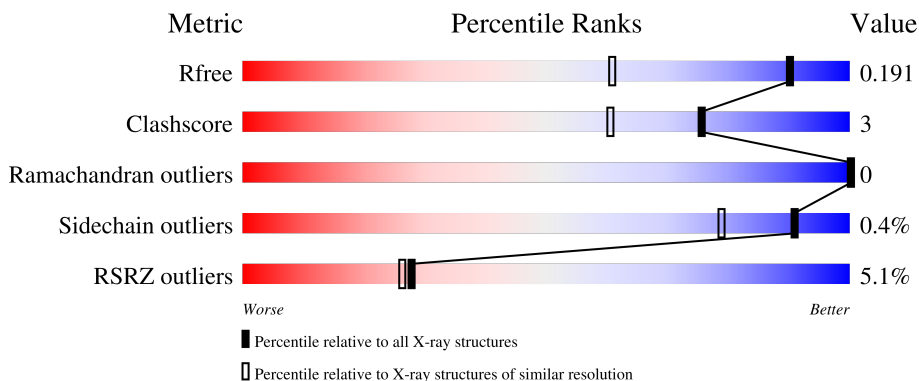
# 1 Overall quality at a glance

The following experimental techniques were used to determine the structure:

*X-RAY DIFFRACTION*

The reported resolution of this entry is 1.42 Å.

Percentile scores (ranging between 0-100) for global validation metrics of the entry are shown in the following graphic. The table shows the number of entries on which the scores are based.



Metric	Whole archive (#Entries)	Similar resolution (#Entries, resolution range(Å))
$R_{free}$	130704	2579 (1.44-1.40)
Clashscore	141614	2696 (1.44-1.40)
Ramachandran outliers	138981	2632 (1.44-1.40)
Sidechain outliers	138945	2631 (1.44-1.40)
RSRZ outliers	127900	2528 (1.44-1.40)

The table below summarises the geometric issues observed across the polymeric chains and their fit to the electron density. The red, orange, yellow and green segments of the lower bar indicate the fraction of residues that contain outliers for  $\geq 3$ , 2, 1 and 0 types of geometric quality criteria respectively. A grey segment represents the fraction of residues that are not modelled. The numeric value for each fraction is indicated below the corresponding segment, with a dot representing fractions  $\leq 5\%$ . The upper red bar (where present) indicates the fraction of residues that have poor fit to the electron density. The numeric value is given above the bar.

Mol	Chain	Length	Quality of chain
1	A	288	 3% 81% 6% 13%
1	B	288	 2% 81% 6% 13%
1	C	288	 8% 79% 8% 13%
1	D	288	 4% 84% 6% 13%

The following table lists non-polymeric compounds, carbohydrate monomers and non-standard

residues in protein, DNA, RNA chains that are outliers for geometric or electron-density-fit criteria:

Mol	Type	Chain	Res	Chirality	Geometry	Clashes	Electron density
5	GOL	C	303	-	-	X	-

## 2 Entry composition [i](#)

There are 6 unique types of molecules in this entry. The entry contains 8732 atoms, of which 0 are hydrogens and 0 are deuteriums.

In the tables below, the ZeroOcc column contains the number of atoms modelled with zero occupancy, the AltConf column contains the number of residues with at least one atom in alternate conformation and the Trace column contains the number of residues modelled with at most 2 atoms.

- Molecule 1 is a protein called Pteridine reductase.

Mol	Chain	Residues	Atoms					ZeroOcc	AltConf	Trace
			Total	C	N	O	S			
1	A	250	1900	1199	334	355	12	0	10	0
1	B	250	1911	1207	333	359	12	0	11	0
1	C	250	1894	1192	332	358	12	0	12	0
1	D	250	1884	1194	326	352	12	0	10	0

There are 80 discrepancies between the modelled and reference sequences:

Chain	Residue	Modelled	Actual	Comment	Reference
A	-19	MET	-	initiating methionine	UNP O76290
A	-18	GLY	-	expression tag	UNP O76290
A	-17	SER	-	expression tag	UNP O76290
A	-16	SER	-	expression tag	UNP O76290
A	-15	HIS	-	expression tag	UNP O76290
A	-14	HIS	-	expression tag	UNP O76290
A	-13	HIS	-	expression tag	UNP O76290
A	-12	HIS	-	expression tag	UNP O76290
A	-11	HIS	-	expression tag	UNP O76290
A	-10	HIS	-	expression tag	UNP O76290
A	-9	SER	-	expression tag	UNP O76290
A	-8	SER	-	expression tag	UNP O76290
A	-7	GLY	-	expression tag	UNP O76290
A	-6	LEU	-	expression tag	UNP O76290
A	-5	VAL	-	expression tag	UNP O76290
A	-4	PRO	-	expression tag	UNP O76290
A	-3	ARG	-	expression tag	UNP O76290
A	-2	GLY	-	expression tag	UNP O76290
A	-1	SER	-	expression tag	UNP O76290
A	0	HIS	-	expression tag	UNP O76290
B	-19	MET	-	initiating methionine	UNP O76290

*Continued on next page...*

*Continued from previous page...*

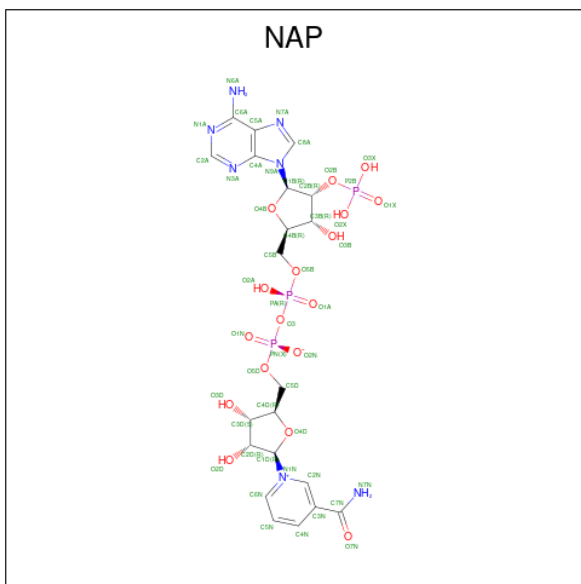
Chain	Residue	Modelled	Actual	Comment	Reference
B	-18	GLY	-	expression tag	UNP O76290
B	-17	SER	-	expression tag	UNP O76290
B	-16	SER	-	expression tag	UNP O76290
B	-15	HIS	-	expression tag	UNP O76290
B	-14	HIS	-	expression tag	UNP O76290
B	-13	HIS	-	expression tag	UNP O76290
B	-12	HIS	-	expression tag	UNP O76290
B	-11	HIS	-	expression tag	UNP O76290
B	-10	HIS	-	expression tag	UNP O76290
B	-9	SER	-	expression tag	UNP O76290
B	-8	SER	-	expression tag	UNP O76290
B	-7	GLY	-	expression tag	UNP O76290
B	-6	LEU	-	expression tag	UNP O76290
B	-5	VAL	-	expression tag	UNP O76290
B	-4	PRO	-	expression tag	UNP O76290
B	-3	ARG	-	expression tag	UNP O76290
B	-2	GLY	-	expression tag	UNP O76290
B	-1	SER	-	expression tag	UNP O76290
B	0	HIS	-	expression tag	UNP O76290
C	-19	MET	-	initiating methionine	UNP O76290
C	-18	GLY	-	expression tag	UNP O76290
C	-17	SER	-	expression tag	UNP O76290
C	-16	SER	-	expression tag	UNP O76290
C	-15	HIS	-	expression tag	UNP O76290
C	-14	HIS	-	expression tag	UNP O76290
C	-13	HIS	-	expression tag	UNP O76290
C	-12	HIS	-	expression tag	UNP O76290
C	-11	HIS	-	expression tag	UNP O76290
C	-10	HIS	-	expression tag	UNP O76290
C	-9	SER	-	expression tag	UNP O76290
C	-8	SER	-	expression tag	UNP O76290
C	-7	GLY	-	expression tag	UNP O76290
C	-6	LEU	-	expression tag	UNP O76290
C	-5	VAL	-	expression tag	UNP O76290
C	-4	PRO	-	expression tag	UNP O76290
C	-3	ARG	-	expression tag	UNP O76290
C	-2	GLY	-	expression tag	UNP O76290
C	-1	SER	-	expression tag	UNP O76290
C	0	HIS	-	expression tag	UNP O76290
D	-19	MET	-	initiating methionine	UNP O76290
D	-18	GLY	-	expression tag	UNP O76290
D	-17	SER	-	expression tag	UNP O76290

*Continued on next page...*

Continued from previous page...

Chain	Residue	Modelled	Actual	Comment	Reference
D	-16	SER	-	expression tag	UNP O76290
D	-15	HIS	-	expression tag	UNP O76290
D	-14	HIS	-	expression tag	UNP O76290
D	-13	HIS	-	expression tag	UNP O76290
D	-12	HIS	-	expression tag	UNP O76290
D	-11	HIS	-	expression tag	UNP O76290
D	-10	HIS	-	expression tag	UNP O76290
D	-9	SER	-	expression tag	UNP O76290
D	-8	SER	-	expression tag	UNP O76290
D	-7	GLY	-	expression tag	UNP O76290
D	-6	LEU	-	expression tag	UNP O76290
D	-5	VAL	-	expression tag	UNP O76290
D	-4	PRO	-	expression tag	UNP O76290
D	-3	ARG	-	expression tag	UNP O76290
D	-2	GLY	-	expression tag	UNP O76290
D	-1	SER	-	expression tag	UNP O76290
D	0	HIS	-	expression tag	UNP O76290

- Molecule 2 is NADP NICOTINAMIDE-ADENINE-DINUCLEOTIDE PHOSPHATE (three-letter code: NAP) (formula:  $C_{21}H_{28}N_7O_{17}P_3$ ).



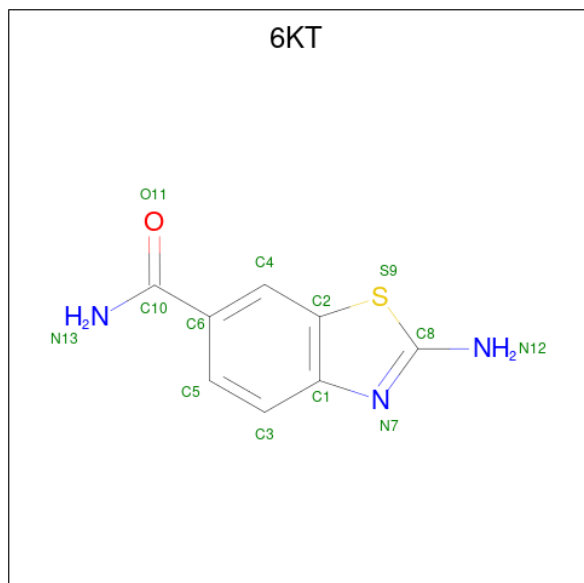
Mol	Chain	Residues	Atoms				ZeroOcc	AltConf		
			Total	C	N	O			P	
2	A	1	Total	48	21	7	17	3	0	0
2	B	1	Total	48	21	7	17	3	0	0

Continued on next page...

Continued from previous page...

Mol	Chain	Residues	Atoms					ZeroOcc	AltConf
2	C	1	Total	C	N	O	P	0	0
			48	21	7	17	3		
2	D	1	Total	C	N	O	P	0	0
			48	21	7	17	3		

- Molecule 3 is 2-amino-1,3-benzothiazole-6-carboxamide (three-letter code: 6KT) (formula:  $C_8H_7N_3OS$ ).



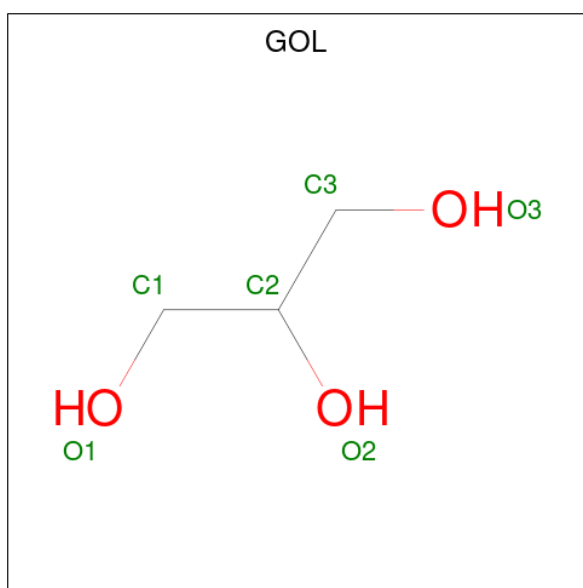
Mol	Chain	Residues	Atoms					ZeroOcc	AltConf
3	A	1	Total	C	N	O	S	0	0
			13	8	3	1	1		
3	B	1	Total	C	N	O	S	0	0
			13	8	3	1	1		
3	C	1	Total	C	N	O	S	0	0
			13	8	3	1	1		
3	D	1	Total	C	N	O	S	0	0
			13	8	3	1	1		

- Molecule 4 is ACETATE ION (three-letter code: ACT) (formula:  $C_2H_3O_2$ ).



Mol	Chain	Residues	Atoms			ZeroOcc	AltConf
4	A	1	Total	C	O	0	0
			4	2	2		
4	B	1	Total	C	O	0	0
			4	2	2		

- Molecule 5 is GLYCEROL (three-letter code: GOL) (formula: C<sub>3</sub>H<sub>8</sub>O<sub>3</sub>).



Mol	Chain	Residues	Atoms			ZeroOcc	AltConf
5	C	1	Total	C	O	0	0
			6	3	3		
5	C	1	Total	C	O	0	0
			6	3	3		



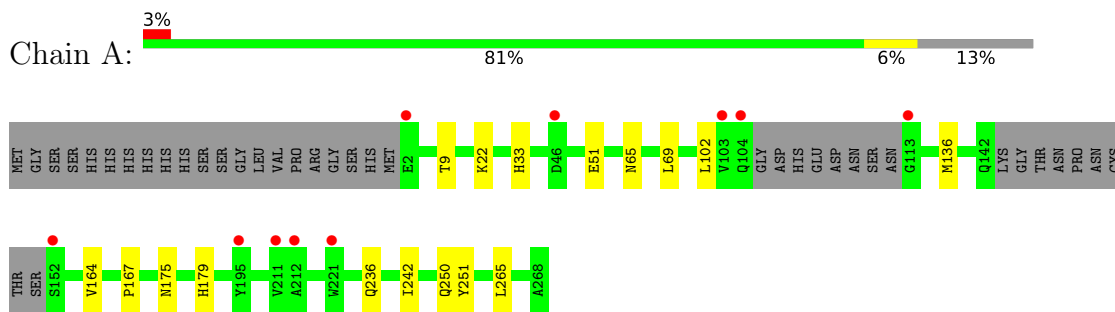
- Molecule 6 is water.

Mol	Chain	Residues	Atoms		ZeroOcc	AltConf
6	A	223	Total 226	O 226	0	5
6	B	246	Total 249	O 249	0	5
6	C	195	Total 195	O 195	0	1
6	D	206	Total 209	O 209	0	5

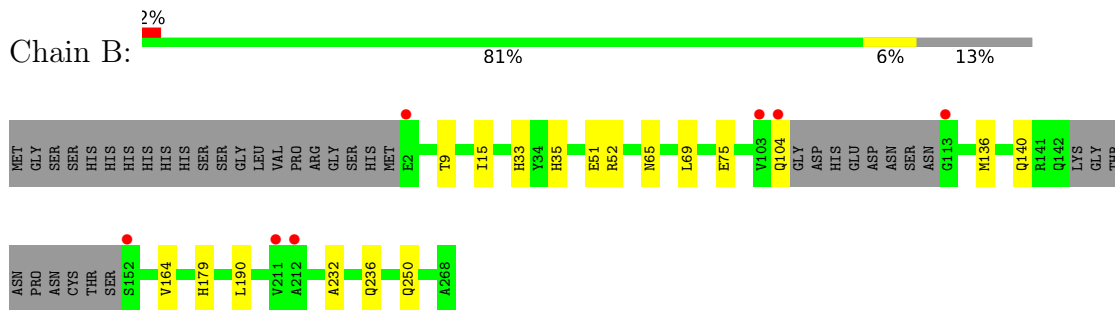
### 3 Residue-property plots [i](#)

These plots are drawn for all protein, RNA, DNA and oligosaccharide chains in the entry. The first graphic for a chain summarises the proportions of the various outlier classes displayed in the second graphic. The second graphic shows the sequence view annotated by issues in geometry and electron density. Residues are color-coded according to the number of geometric quality criteria for which they contain at least one outlier: green = 0, yellow = 1, orange = 2 and red = 3 or more. A red dot above a residue indicates a poor fit to the electron density ( $RSRZ > 2$ ). Stretches of 2 or more consecutive residues without any outlier are shown as a green connector. Residues present in the sample, but not in the model, are shown in grey.

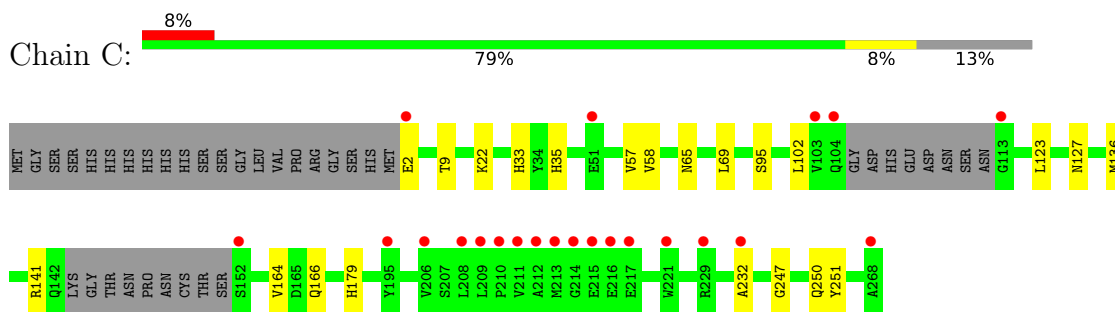
- Molecule 1: Pteridine reductase



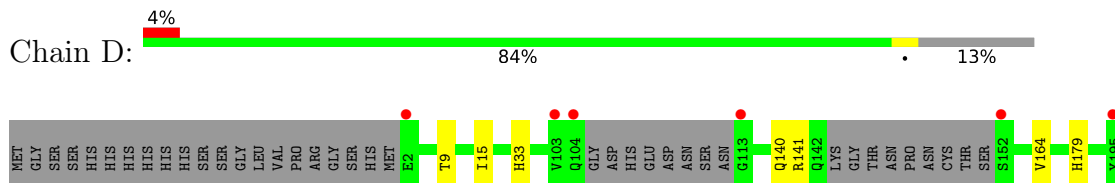
- Molecule 1: Pteridine reductase

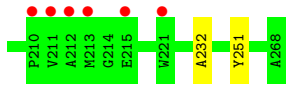


- Molecule 1: Pteridine reductase



- Molecule 1: Pteridine reductase





## 4 Data and refinement statistics i

Property	Value	Source
Space group	P 1 21 1	Depositor
Cell constants a, b, c, $\alpha$ , $\beta$ , $\gamma$	74.72Å 90.41Å 82.89Å 90.00° 115.62° 90.00°	Depositor
Resolution (Å)	34.54 – 1.42 34.52 – 1.42	Depositor EDS
% Data completeness (in resolution range)	98.0 (34.54-1.42) 98.0 (34.52-1.42)	Depositor EDS
$R_{merge}$	0.06	Depositor
$R_{sym}$	(Not available)	Depositor
$\langle I/\sigma(I) \rangle$ <sup>1</sup>	2.64 (at 1.42Å)	Xtrriage
Refinement program	REFMAC 5.8.0158	Depositor
R, $R_{free}$	0.174 , 0.191 0.174 , 0.191	Depositor DCC
$R_{free}$ test set	9273 reflections (5.06%)	wwPDB-VP
Wilson B-factor (Å <sup>2</sup> )	13.6	Xtrriage
Anisotropy	0.078	Xtrriage
Bulk solvent $k_{sol}$ (e/Å <sup>3</sup> ), $B_{sol}$ (Å <sup>2</sup> )	0.36 , 46.1	EDS
L-test for twinning <sup>2</sup>	$\langle  L  \rangle = 0.50$ , $\langle L^2 \rangle = 0.33$	Xtrriage
Estimated twinning fraction	0.013 for h,-k,-h-l	Xtrriage
$F_o, F_c$ correlation	0.97	EDS
Total number of atoms	8732	wwPDB-VP
Average B, all atoms (Å <sup>2</sup> )	18.0	wwPDB-VP

Xtrriage's analysis on translational NCS is as follows: *The analyses of the Patterson function reveals a significant off-origin peak that is 34.78 % of the origin peak, indicating pseudo-translational symmetry. The chance of finding a peak of this or larger height randomly in a structure without pseudo-translational symmetry is equal to 6.4686e-04. The detected translational NCS is most likely also responsible for the elevated intensity ratio.*

<sup>1</sup>Intensities estimated from amplitudes.

<sup>2</sup>Theoretical values of  $\langle |L| \rangle$ ,  $\langle L^2 \rangle$  for acentric reflections are 0.5, 0.333 respectively for untwinned datasets, and 0.375, 0.2 for perfectly twinned datasets.

## 5 Model quality [i](#)

### 5.1 Standard geometry [i](#)

Bond lengths and bond angles in the following residue types are not validated in this section: 6KT, NAP, CSX, ACT, GOL

The Z score for a bond length (or angle) is the number of standard deviations the observed value is removed from the expected value. A bond length (or angle) with  $|Z| > 5$  is considered an outlier worth inspection. RMSZ is the root-mean-square of all Z scores of the bond lengths (or angles).

Mol	Chain	Bond lengths		Bond angles	
		RMSZ	# Z  >5	RMSZ	# Z  >5
1	A	0.52	0/1943	0.69	0/2634
1	B	0.54	0/1960	0.73	0/2658
1	C	0.50	0/1943	0.69	0/2638
1	D	0.51	0/1930	0.69	0/2621
All	All	0.51	0/7776	0.70	0/10551

There are no bond length outliers.

There are no bond angle outliers.

There are no chirality outliers.

There are no planarity outliers.

### 5.2 Too-close contacts [i](#)

In the following table, the Non-H and H(model) columns list the number of non-hydrogen atoms and hydrogen atoms in the chain respectively. The H(added) column lists the number of hydrogen atoms added and optimized by MolProbity. The Clashes column lists the number of clashes within the asymmetric unit, whereas Symm-Clashes lists symmetry-related clashes.

Mol	Chain	Non-H	H(model)	H(added)	Clashes	Symm-Clashes
1	A	1900	0	1935	15	0
1	B	1911	0	1951	16	0
1	C	1894	0	1909	21	0
1	D	1884	0	1924	7	0
2	A	48	0	25	0	0
2	B	48	0	25	2	0
2	C	48	0	25	3	0
2	D	48	0	25	1	0
3	A	13	0	0	0	0

*Continued on next page...*

*Continued from previous page...*

Mol	Chain	Non-H	H(model)	H(added)	Clashes	Symm-Clashes
3	B	13	0	0	0	0
3	C	13	0	0	0	0
3	D	13	0	0	0	0
4	A	4	0	3	0	0
4	B	4	0	3	1	0
5	C	12	0	16	7	0
6	A	226	0	0	3	0
6	B	249	0	0	0	0
6	C	195	0	0	2	0
6	D	209	0	0	1	0
All	All	8732	0	7841	49	0

The all-atom clashscore is defined as the number of clashes found per 1000 atoms (including hydrogen atoms). The all-atom clashscore for this structure is 3.

All (49) close contacts within the same asymmetric unit are listed below, sorted by their clash magnitude.

Atom-1	Atom-2	Interatomic distance (Å)	Clash overlap (Å)
1:B:104:GLN:H	1:D:140:GLN:HE22	1.28	0.80
1:C:58:VAL:HG22	5:C:303:GOL:H31	1.72	0.71
1:D:164:VAL:HG22	1:D:179:HIS:CD2	2.28	0.68
1:A:164:VAL:HG22	1:A:179:HIS:CD2	2.29	0.67
1:C:58:VAL:H	5:C:303:GOL:C3	2.06	0.67
1:B:51:GLU:OE1	1:B:52[A]:ARG:HG3	1.95	0.66
1:B:164:VAL:HG22	1:B:179:HIS:CD2	2.33	0.64
1:C:95[B]:SER:OG	2:C:301:NAP:H3D	1.97	0.64
1:C:57:VAL:HA	5:C:303:GOL:H32	1.83	0.61
1:C:58:VAL:H	5:C:303:GOL:H32	1.66	0.59
1:A:236:GLN:HE21	1:B:250[B]:GLN:HG3	1.68	0.58
1:C:164:VAL:HG22	1:C:179:HIS:CD2	2.41	0.55
1:A:250:GLN:CD	1:B:236:GLN:HE21	2.10	0.54
1:C:95[B]:SER:OG	2:C:301:NAP:C3D	2.57	0.52
1:A:22[B]:LYS:HG3	6:A:518:HOH:O	2.10	0.51
1:C:9:THR:HA	1:C:33:HIS:HB3	1.95	0.48
1:C:123:LEU:O	1:C:127[A]:ASN:HB2	2.13	0.48
1:A:65:ASN:HA	1:A:69:LEU:HD22	1.95	0.47
1:C:35:HIS:HB2	2:C:301:NAP:C2A	2.45	0.47
1:B:15:ILE:HB	2:B:301:NAP:H51N	1.98	0.45
1:A:164:VAL:HG22	1:A:179:HIS:NE2	2.32	0.45
1:B:136[B]:MET:CG	1:B:140[B]:GLN:NE2	2.80	0.45
6:A:490:HOH:O	1:B:250[B]:GLN:HG2	2.16	0.45

*Continued on next page...*

Continued from previous page...

Atom-1	Atom-2	Interatomic distance (Å)	Clash overlap (Å)
1:A:102:LEU:O	1:C:136[B]:MET:HG3	2.17	0.44
1:D:9:THR:HA	1:D:33:HIS:HB3	2.00	0.43
1:A:250:GLN:OE1	6:A:401:HOH:O	2.21	0.43
1:C:2:GLU:N	6:C:406:HOH:O	2.51	0.43
1:A:136[B]:MET:HG3	1:C:102:LEU:O	2.18	0.43
1:B:136[B]:MET:HG3	1:B:140[B]:GLN:NE2	2.34	0.43
1:C:232:ALA:HB2	1:D:251:TYR:CE2	2.54	0.43
1:D:141:ARG:HG2	6:D:551:HOH:O	2.18	0.43
1:A:251:TYR:CE2	1:B:232:ALA:HB2	2.54	0.42
1:C:251:TYR:CE2	1:D:232:ALA:HB2	2.53	0.42
1:D:15:ILE:HB	2:D:301:NAP:H51N	2.01	0.42
1:B:9:THR:HA	1:B:33:HIS:HB3	2.00	0.42
1:C:247:GLY:HA2	1:C:250:GLN:HG3	2.01	0.42
1:A:9:THR:HA	1:A:33:HIS:HB3	2.02	0.42
1:A:265:LEU:O	1:B:190[B]:LEU:HD11	2.20	0.42
1:C:65:ASN:HA	1:C:69:LEU:HD22	2.02	0.42
1:A:22[A]:LYS:CD	1:A:242:ILE:HG13	2.50	0.42
1:C:58:VAL:H	5:C:303:GOL:H31	1.81	0.41
1:C:141:ARG:HG2	6:C:539:HOH:O	2.20	0.41
1:A:167:PRO:HB3	1:A:175[B]:ASN:OD1	2.20	0.41
1:B:75[A]:GLU:HG2	4:B:303:ACT:H2	2.03	0.41
1:B:35:HIS:HB2	2:B:301:NAP:C2A	2.50	0.41
1:B:65:ASN:HA	1:B:69:LEU:HD22	2.02	0.41
1:A:250:GLN:CG	1:B:236:GLN:HE21	2.34	0.40
1:C:57:VAL:CA	5:C:303:GOL:H32	2.49	0.40
1:C:58:VAL:N	5:C:303:GOL:H32	2.36	0.40

There are no symmetry-related clashes.

## 5.3 Torsion angles [\(i\)](#)

### 5.3.1 Protein backbone [\(i\)](#)

In the following table, the Percentiles column shows the percent Ramachandran outliers of the chain as a percentile score with respect to all X-ray entries followed by that with respect to entries of similar resolution.

The Analysed column shows the number of residues for which the backbone conformation was analysed, and the total number of residues.

Mol	Chain	Analysed	Favoured	Allowed	Outliers	Percentiles	
1	A	252/288 (88%)	243 (96%)	9 (4%)	0	100	100
1	B	254/288 (88%)	245 (96%)	9 (4%)	0	100	100
1	C	255/288 (88%)	244 (96%)	11 (4%)	0	100	100
1	D	253/288 (88%)	245 (97%)	8 (3%)	0	100	100
All	All	1014/1152 (88%)	977 (96%)	37 (4%)	0	100	100

There are no Ramachandran outliers to report.

### 5.3.2 Protein sidechains [i](#)

In the following table, the Percentiles column shows the percent sidechain outliers of the chain as a percentile score with respect to all X-ray entries followed by that with respect to entries of similar resolution.

The Analysed column shows the number of residues for which the sidechain conformation was analysed, and the total number of residues.

Mol	Chain	Analysed	Rotameric	Outliers	Percentiles	
1	A	201/230 (87%)	200 (100%)	1 (0%)	88	73
1	B	204/230 (89%)	204 (100%)	0	100	100
1	C	200/230 (87%)	198 (99%)	2 (1%)	76	52
1	D	200/230 (87%)	200 (100%)	0	100	100
All	All	805/920 (88%)	802 (100%)	3 (0%)	91	79

All (3) residues with a non-rotameric sidechain are listed below:

Mol	Chain	Res	Type
1	A	51	GLU
1	C	22	LYS
1	C	166	GLN

Sometimes sidechains can be flipped to improve hydrogen bonding and reduce clashes. All (5) such sidechains are listed below:

Mol	Chain	Res	Type
1	A	25	GLN
1	A	250	GLN
1	B	236	GLN
1	D	67	ASN
1	D	140	GLN



### 5.3.3 RNA [i](#)

There are no RNA molecules in this entry.

## 5.4 Non-standard residues in protein, DNA, RNA chains [i](#)

4 non-standard protein/DNA/RNA residues are modelled in this entry.

In the following table, the Counts columns list the number of bonds (or angles) for which Mogul statistics could be retrieved, the number of bonds (or angles) that are observed in the model and the number of bonds (or angles) that are defined in the Chemical Component Dictionary. The Link column lists molecule types, if any, to which the group is linked. The Z score for a bond length (or angle) is the number of standard deviations the observed value is removed from the expected value. A bond length (or angle) with  $|Z| > 2$  is considered an outlier worth inspection. RMSZ is the root-mean-square of all Z scores of the bond lengths (or angles).

Mol	Type	Chain	Res	Link	Bond lengths			Bond angles		
					Counts	RMSZ	# Z  > 2	Counts	RMSZ	# Z  > 2
1	CSX	C	168	1	3,6,7	0.61	0	1,6,8	0.58	0
1	CSX	B	168	1	3,6,7	0.68	0	1,6,8	0.74	0
1	CSX	A	168	1	3,6,7	0.72	0	1,6,8	0.00	0
1	CSX	D	168	1	3,6,7	0.66	0	1,6,8	0.05	0

In the following table, the Chirals column lists the number of chiral outliers, the number of chiral centers analysed, the number of these observed in the model and the number defined in the Chemical Component Dictionary. Similar counts are reported in the Torsion and Rings columns. '-' means no outliers of that kind were identified.

Mol	Type	Chain	Res	Link	Chirals	Torsions	Rings
1	CSX	C	168	1	-	0/1/5/7	-
1	CSX	B	168	1	-	0/1/5/7	-
1	CSX	A	168	1	-	0/1/5/7	-
1	CSX	D	168	1	-	0/1/5/7	-

There are no bond length outliers.

There are no bond angle outliers.

There are no chirality outliers.

There are no torsion outliers.

There are no ring outliers.

No monomer is involved in short contacts.

## 5.5 Carbohydrates [i](#)

There are no monosaccharides in this entry.

## 5.6 Ligand geometry [i](#)

12 ligands are modelled in this entry.

In the following table, the Counts columns list the number of bonds (or angles) for which Mogul statistics could be retrieved, the number of bonds (or angles) that are observed in the model and the number of bonds (or angles) that are defined in the Chemical Component Dictionary. The Link column lists molecule types, if any, to which the group is linked. The Z score for a bond length (or angle) is the number of standard deviations the observed value is removed from the expected value. A bond length (or angle) with  $|Z| > 2$  is considered an outlier worth inspection. RMSZ is the root-mean-square of all Z scores of the bond lengths (or angles).

Mol	Type	Chain	Res	Link	Bond lengths			Bond angles		
					Counts	RMSZ	# Z  > 2	Counts	RMSZ	# Z  > 2
3	6KT	A	302	-	11,14,14	2.64	3 (27%)	15,20,20	1.78	4 (26%)
3	6KT	C	302	-	11,14,14	2.71	3 (27%)	15,20,20	1.74	5 (33%)
3	6KT	B	302	-	11,14,14	2.26	3 (27%)	15,20,20	1.95	3 (20%)
4	ACT	A	303	-	3,3,3	0.76	0	3,3,3	0.85	0
5	GOL	C	303	-	5,5,5	0.21	0	5,5,5	1.04	0
2	NAP	A	301	-	45,52,52	0.84	2 (4%)	56,80,80	1.14	6 (10%)
3	6KT	D	302	-	11,14,14	2.40	3 (27%)	15,20,20	1.71	4 (26%)
4	ACT	B	303	-	3,3,3	0.79	0	3,3,3	0.62	0
2	NAP	D	301	-	45,52,52	0.97	4 (8%)	56,80,80	1.25	5 (8%)
2	NAP	C	301	-	45,52,52	0.94	4 (8%)	56,80,80	1.11	5 (8%)
2	NAP	B	301	-	45,52,52	0.93	3 (6%)	56,80,80	1.13	4 (7%)
5	GOL	C	304	-	5,5,5	0.30	0	5,5,5	0.44	0

In the following table, the Chirals column lists the number of chiral outliers, the number of chiral centers analysed, the number of these observed in the model and the number defined in the Chemical Component Dictionary. Similar counts are reported in the Torsion and Rings columns. '-' means no outliers of that kind were identified.

Mol	Type	Chain	Res	Link	Chirals	Torsions	Rings
3	6KT	A	302	-	-	0/4/4/4	0/2/2/2
3	6KT	C	302	-	-	0/4/4/4	0/2/2/2
3	6KT	B	302	-	-	0/4/4/4	0/2/2/2
5	GOL	C	303	-	-	2/4/4/4	-
2	NAP	A	301	-	-	0/31/67/67	0/5/5/5
3	6KT	D	302	-	-	0/4/4/4	0/2/2/2

*Continued on next page...*

Continued from previous page...

Mol	Type	Chain	Res	Link	Chirals	Torsions	Rings
2	NAP	D	301	-	-	0/31/67/67	0/5/5/5
2	NAP	C	301	-	-	0/31/67/67	0/5/5/5
2	NAP	B	301	-	-	0/31/67/67	0/5/5/5
5	GOL	C	304	-	-	2/4/4/4	-

All (25) bond length outliers are listed below:

Mol	Chain	Res	Type	Atoms	Z	Observed(Å)	Ideal(Å)
3	C	302	6KT	C6-C10	-6.97	1.40	1.50
3	A	302	6KT	C6-C10	-6.77	1.40	1.50
3	D	302	6KT	C6-C10	-5.92	1.41	1.50
3	B	302	6KT	C6-C10	-5.13	1.42	1.50
3	C	302	6KT	C3-C1	-4.62	1.33	1.41
3	A	302	6KT	C3-C1	-4.40	1.34	1.41
3	B	302	6KT	C3-C1	-3.92	1.35	1.41
3	D	302	6KT	C3-C1	-3.87	1.35	1.41
2	C	301	NAP	C5A-C4A	2.82	1.48	1.40
2	B	301	NAP	C5A-C4A	2.76	1.48	1.40
3	B	302	6KT	C4-C6	2.68	1.42	1.37
2	D	301	NAP	O4D-C1D	2.59	1.44	1.41
2	A	301	NAP	C5A-C4A	2.52	1.47	1.40
2	D	301	NAP	C5A-C4A	2.51	1.47	1.40
2	D	301	NAP	P2B-O2B	2.32	1.63	1.59
3	A	302	6KT	C4-C6	2.32	1.41	1.37
3	D	302	6KT	C4-C6	2.30	1.41	1.37
2	A	301	NAP	C2A-N3A	2.29	1.35	1.32
2	B	301	NAP	C2A-N3A	2.23	1.35	1.32
2	B	301	NAP	P2B-O2B	2.23	1.63	1.59
2	C	301	NAP	P2B-O2B	2.14	1.63	1.59
2	D	301	NAP	C2A-N3A	2.12	1.35	1.32
3	C	302	6KT	C1-C2	-2.09	1.35	1.42
2	C	301	NAP	O4D-C1D	2.09	1.44	1.41
2	C	301	NAP	C2A-N3A	2.02	1.35	1.32

All (36) bond angle outliers are listed below:

Mol	Chain	Res	Type	Atoms	Z	Observed(°)	Ideal(°)
3	B	302	6KT	C1-C2-S9	-3.96	106.60	111.85
3	B	302	6KT	C4-C2-S9	3.89	132.89	125.10
2	D	301	NAP	C1B-N9A-C4A	-3.57	120.37	126.64
2	C	301	NAP	C1B-N9A-C4A	-3.40	120.67	126.64
3	D	302	6KT	C1-C2-S9	-3.40	107.35	111.85

Continued on next page...

Continued from previous page...

Mol	Chain	Res	Type	Atoms	Z	Observed(°)	Ideal(°)
2	A	301	NAP	N3A-C2A-N1A	-3.39	123.38	128.68
3	C	302	6KT	C1-C2-S9	-3.38	107.38	111.85
3	D	302	6KT	C4-C2-S9	3.34	131.79	125.10
2	D	301	NAP	N3A-C2A-N1A	-3.30	123.53	128.68
3	A	302	6KT	C4-C2-S9	3.24	131.58	125.10
3	A	302	6KT	C1-C2-S9	-3.15	107.68	111.85
2	C	301	NAP	N3A-C2A-N1A	-3.14	123.76	128.68
2	B	301	NAP	C2A-N1A-C6A	2.93	123.77	118.75
3	C	302	6KT	C4-C2-S9	2.93	130.97	125.10
2	A	301	NAP	C1B-N9A-C4A	-2.88	121.59	126.64
2	B	301	NAP	C1B-N9A-C4A	-2.85	121.63	126.64
3	A	302	6KT	C2-C1-N7	2.84	114.64	108.04
2	B	301	NAP	C3N-C7N-N7N	2.81	121.12	117.75
2	B	301	NAP	N3A-C2A-N1A	-2.77	124.35	128.68
2	A	301	NAP	C2A-N1A-C6A	2.73	123.43	118.75
3	B	302	6KT	C2-C1-N7	2.69	114.31	108.04
2	D	301	NAP	C6N-N1N-C2N	-2.62	119.58	121.97
3	D	302	6KT	C2-C1-N7	2.61	114.12	108.04
3	A	302	6KT	C3-C5-C6	-2.57	117.89	120.79
2	C	301	NAP	C4A-C5A-N7A	-2.57	106.72	109.40
2	D	301	NAP	C4A-C5A-N7A	-2.42	106.88	109.40
3	C	302	6KT	C2-C1-N7	2.40	113.62	108.04
3	C	302	6KT	C3-C5-C6	-2.33	118.16	120.79
2	A	301	NAP	O4D-C1D-C2D	-2.27	103.61	106.93
3	C	302	6KT	C6-C10-N13	-2.25	115.05	117.75
2	C	301	NAP	PN-O3-PA	-2.22	125.21	132.83
2	C	301	NAP	C2A-N1A-C6A	2.21	122.54	118.75
2	A	301	NAP	N6A-C6A-N1A	2.17	123.07	118.57
2	D	301	NAP	C2A-N1A-C6A	2.16	122.44	118.75
3	D	302	6KT	C3-C5-C6	-2.15	118.36	120.79
2	A	301	NAP	C4A-C5A-N7A	-2.02	107.29	109.40

There are no chirality outliers.

All (4) torsion outliers are listed below:

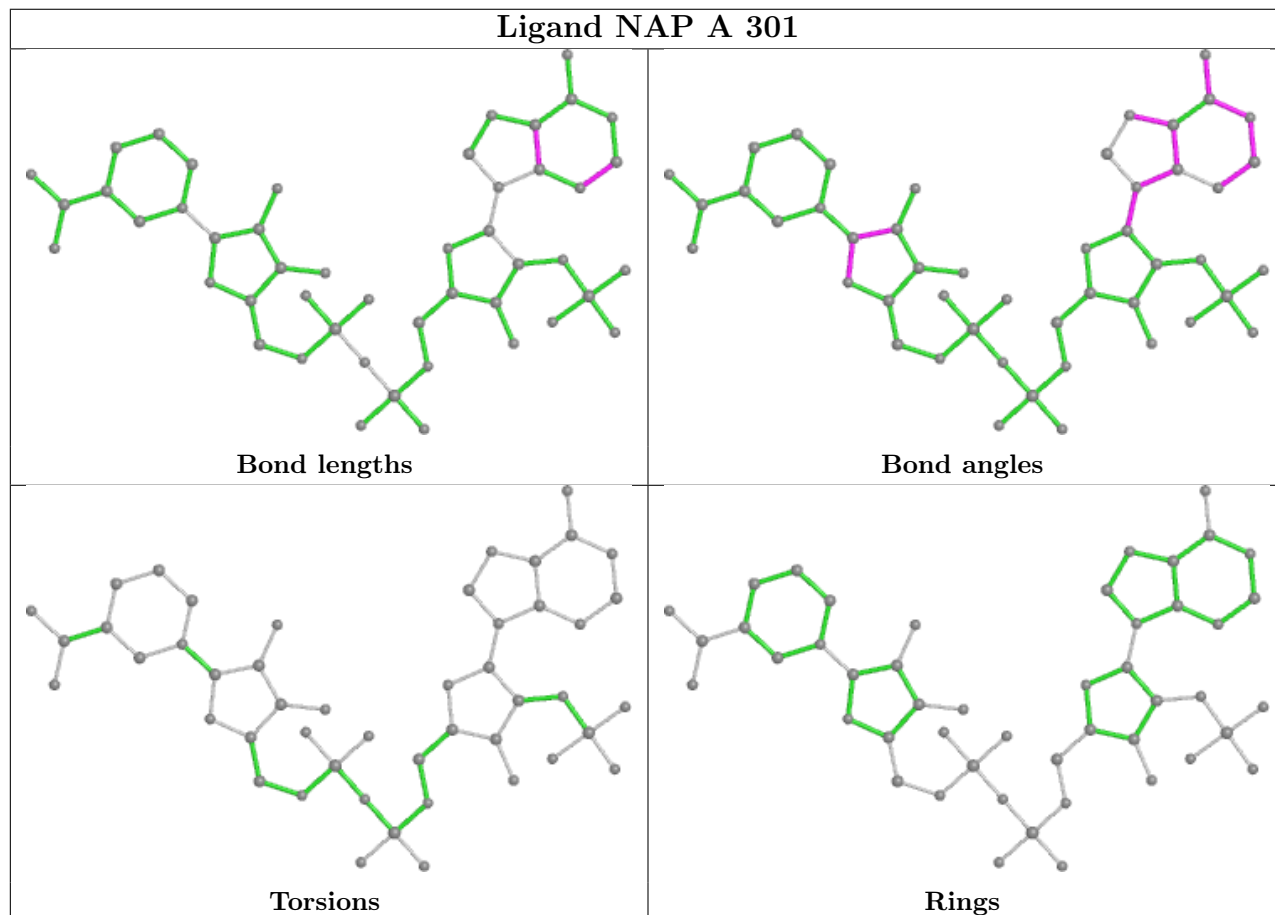
Mol	Chain	Res	Type	Atoms
5	C	304	GOL	O1-C1-C2-C3
5	C	303	GOL	O1-C1-C2-C3
5	C	303	GOL	O1-C1-C2-O2
5	C	304	GOL	O1-C1-C2-O2

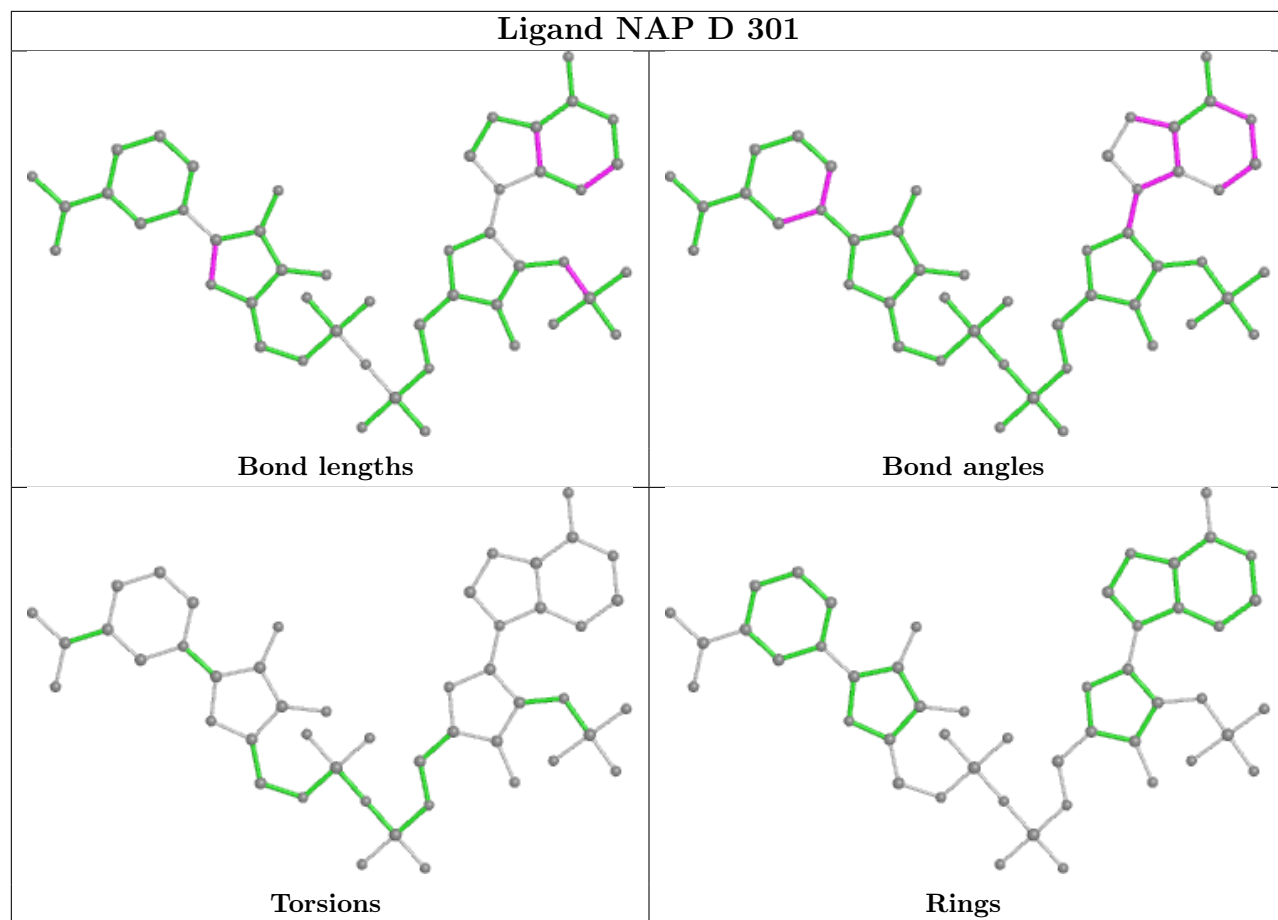
There are no ring outliers.

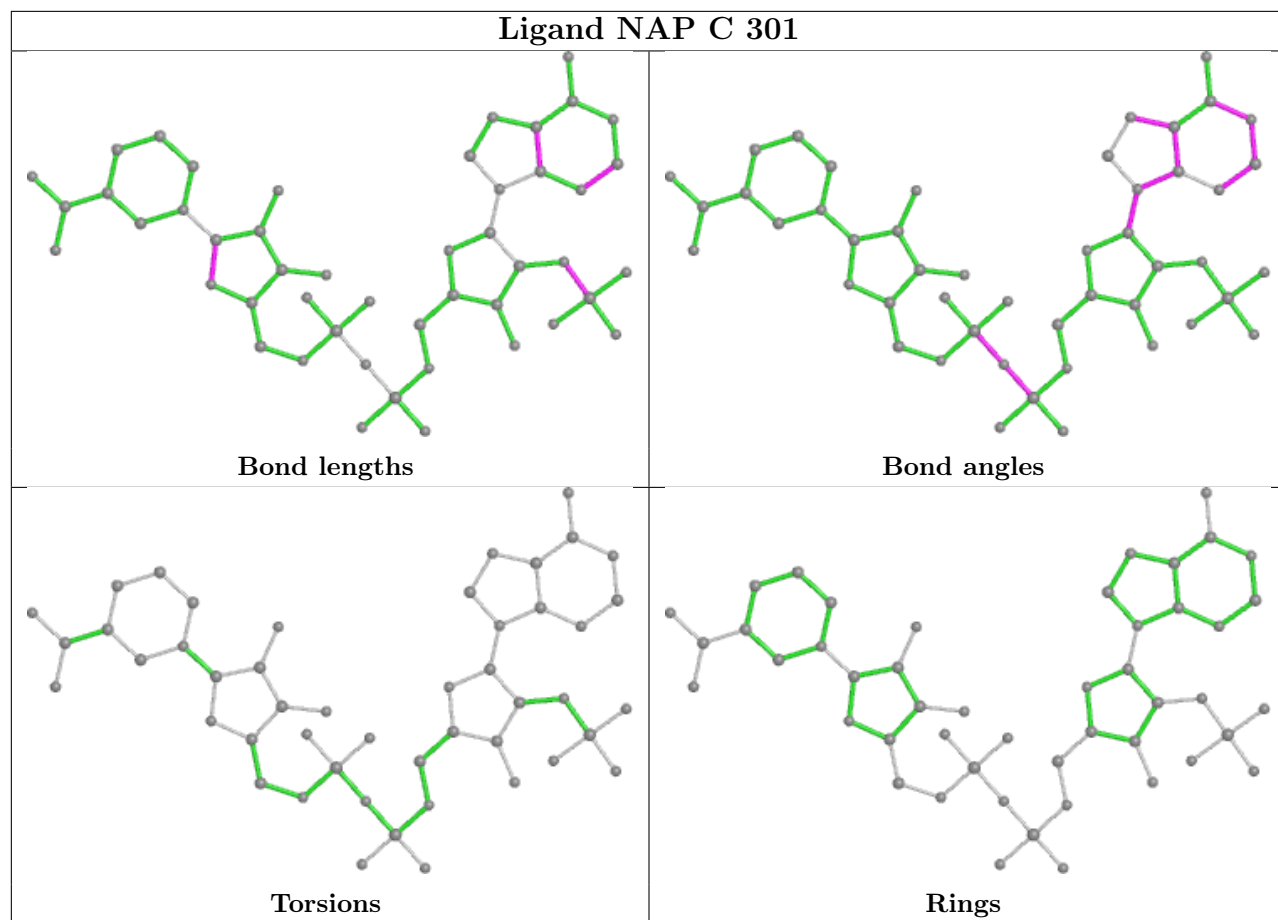
5 monomers are involved in 14 short contacts:

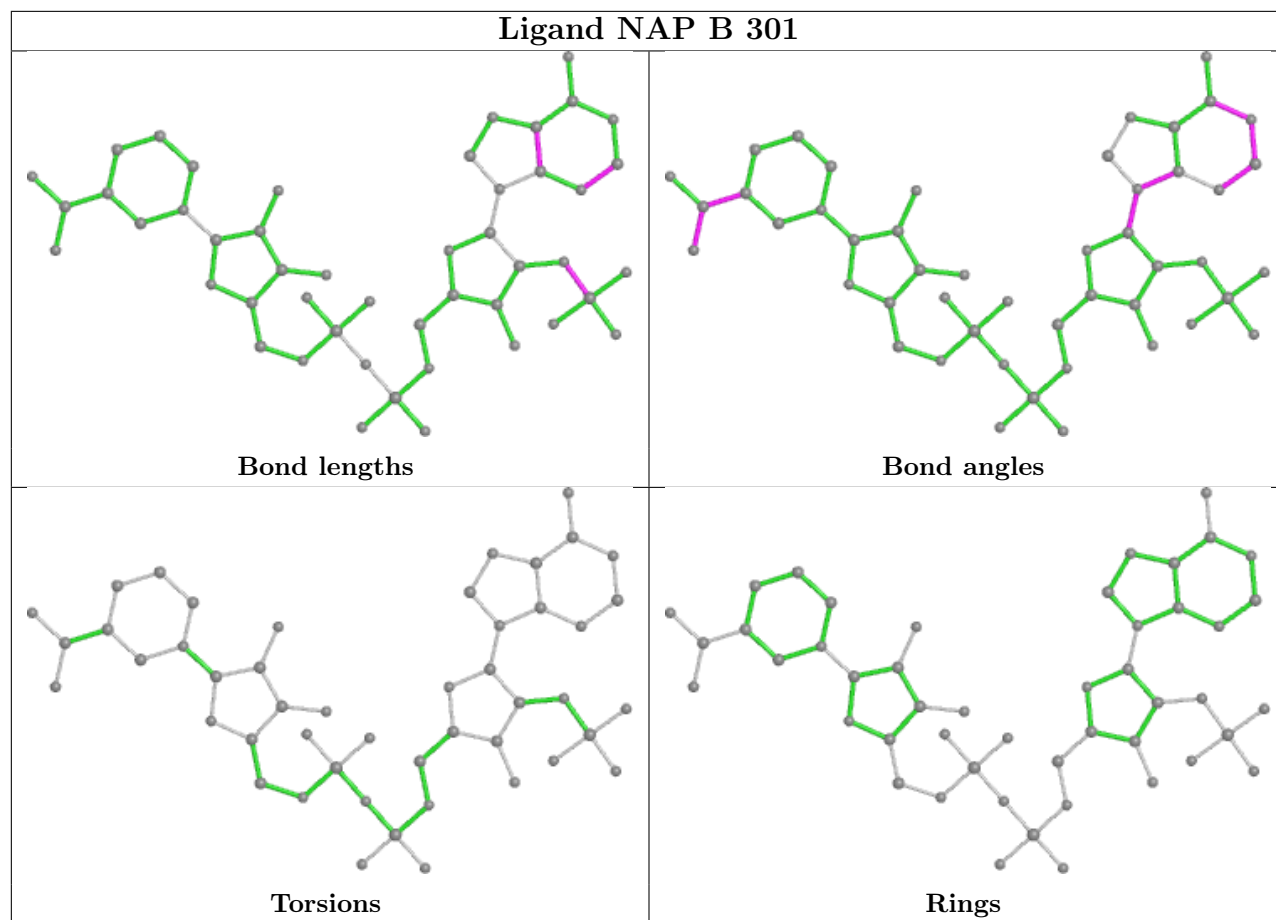
Mol	Chain	Res	Type	Clashes	Symm-Clashes
5	C	303	GOL	7	0
4	B	303	ACT	1	0
2	D	301	NAP	1	0
2	C	301	NAP	3	0
2	B	301	NAP	2	0

The following is a two-dimensional graphical depiction of Mogul quality analysis of bond lengths, bond angles, torsion angles, and ring geometry for all instances of the Ligand of Interest. In addition, ligands with molecular weight > 250 and outliers as shown on the validation Tables will also be included. For torsion angles, if less than 5% of the Mogul distribution of torsion angles is within 10 degrees of the torsion angle in question, then that torsion angle is considered an outlier. Any bond that is central to one or more torsion angles identified as an outlier by Mogul will be highlighted in the graph. For rings, the root-mean-square deviation (RMSD) between the ring in question and similar rings identified by Mogul is calculated over all ring torsion angles. If the average RMSD is greater than 60 degrees and the minimal RMSD between the ring in question and any Mogul-identified rings is also greater than 60 degrees, then that ring is considered an outlier. The outliers are highlighted in purple. The color gray indicates Mogul did not find sufficient equivalents in the CSD to analyse the geometry.









## 5.7 Other polymers [\(i\)](#)

There are no such residues in this entry.

## 5.8 Polymer linkage issues [\(i\)](#)

There are no chain breaks in this entry.



## 6 Fit of model and data

### 6.1 Protein, DNA and RNA chains

In the following table, the column labelled ‘#RSRZ > 2’ contains the number (and percentage) of RSRZ outliers, followed by percent RSRZ outliers for the chain as percentile scores relative to all X-ray entries and entries of similar resolution. The OWAB column contains the minimum, median, 95<sup>th</sup> percentile and maximum values of the occupancy-weighted average B-factor per residue. The column labelled ‘Q < 0.9’ lists the number of (and percentage) of residues with an average occupancy less than 0.9.

Mol	Chain	Analysed	<RSRZ>	#RSRZ>2	OWAB(Å <sup>2</sup> )	Q<0.9
1	A	249/288 (86%)	0.24	10 (4%) 38 38	8, 14, 28, 41	4 (1%)
1	B	249/288 (86%)	0.16	7 (2%) 53 52	8, 13, 26, 39	1 (0%)
1	C	249/288 (86%)	0.56	22 (8%) 10 8	9, 17, 40, 77	3 (1%)
1	D	249/288 (86%)	0.38	12 (4%) 30 29	8, 15, 33, 56	5 (2%)
All	All	996/1152 (86%)	0.34	51 (5%) 28 26	8, 15, 32, 77	13 (1%)

All (51) RSRZ outliers are listed below:

Mol	Chain	Res	Type	RSRZ
1	C	212	ALA	10.4
1	C	208	LEU	8.6
1	C	211	VAL	7.2
1	C	113	GLY	7.0
1	D	212	ALA	6.5
1	C	221	TRP	6.2
1	B	113	GLY	6.2
1	D	211	VAL	6.1
1	D	113	GLY	6.0
1	B	211	VAL	5.3
1	C	104	GLN	4.7
1	A	113	GLY	4.5
1	B	104	GLN	4.4
1	C	210	PRO	4.4
1	D	152	SER	4.4
1	D	104	GLN	4.3
1	A	212	ALA	4.3
1	D	210	PRO	4.3
1	C	214	GLY	4.1
1	C	213	MET	3.9
1	C	152	SER	3.8

*Continued on next page...*

*Continued from previous page...*

Mol	Chain	Res	Type	RSRZ
1	A	104	GLN	3.8
1	C	217	GLU	3.7
1	A	103	VAL	3.6
1	D	213	MET	3.5
1	A	221	TRP	3.4
1	B	212	ALA	3.3
1	C	103	VAL	3.2
1	C	2	GLU	3.1
1	D	195	TYR	3.1
1	D	221	TRP	3.0
1	C	195	TYR	3.0
1	A	152	SER	3.0
1	C	216	GLU	3.0
1	A	2	GLU	2.9
1	B	152	SER	2.9
1	A	211	VAL	2.9
1	D	103	VAL	2.9
1	C	206[A]	VAL	2.9
1	D	2	GLU	2.8
1	C	229	ARG	2.8
1	C	209	LEU	2.7
1	A	195	TYR	2.4
1	C	232	ALA	2.4
1	B	103	VAL	2.4
1	C	51	GLU	2.3
1	B	2	GLU	2.3
1	C	215	GLU	2.2
1	D	215	GLU	2.2
1	A	46	ASP	2.1
1	C	268	ALA	2.0

## 6.2 Non-standard residues in protein, DNA, RNA chains [i](#)

In the following table, the Atoms column lists the number of modelled atoms in the group and the number defined in the chemical component dictionary. The B-factors column lists the minimum, median, 95<sup>th</sup> percentile and maximum values of B factors of atoms in the group. The column labelled 'Q< 0.9' lists the number of atoms with occupancy less than 0.9.

Mol	Type	Chain	Res	Atoms	RSCC	RSR	B-factors(Å <sup>2</sup> )	Q<0.9
1	CSX	C	168	7/8	0.86	0.12	17,19,30,32	0
1	CSX	B	168	7/8	0.89	0.13	15,17,28,30	0
1	CSX	A	168	7/8	0.91	0.12	17,18,31,34	0

*Continued on next page...*

*Continued from previous page...*

Mol	Type	Chain	Res	Atoms	RSCC	RSR	B-factors(Å <sup>2</sup> )	Q<0.9
1	CSX	D	168	7/8	0.92	0.11	17,18,29,34	0

### 6.3 Carbohydrates [i](#)

There are no monosaccharides in this entry.

### 6.4 Ligands [i](#)

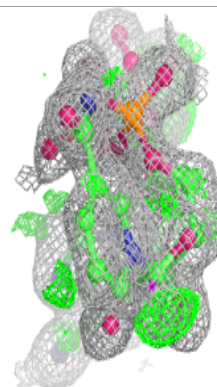
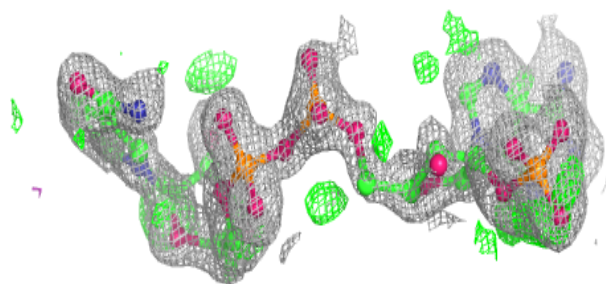
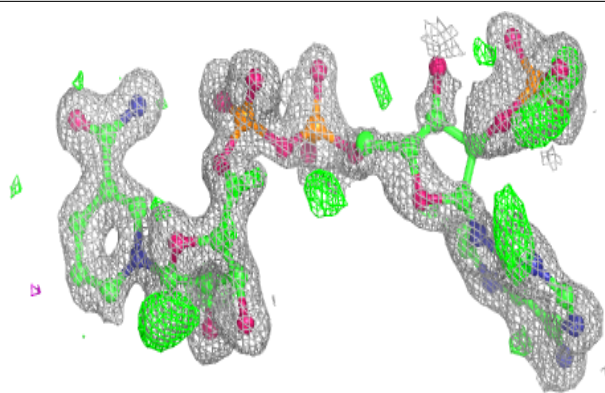
In the following table, the Atoms column lists the number of modelled atoms in the group and the number defined in the chemical component dictionary. The B-factors column lists the minimum, median, 95<sup>th</sup> percentile and maximum values of B factors of atoms in the group. The column labelled 'Q< 0.9' lists the number of atoms with occupancy less than 0.9.

Mol	Type	Chain	Res	Atoms	RSCC	RSR	B-factors(Å <sup>2</sup> )	Q<0.9
5	GOL	C	303	6/6	0.76	0.21	21,27,31,33	0
3	6KT	C	302	13/13	0.82	0.19	24,25,29,32	13
2	NAP	C	301	48/48	0.84	0.18	17,21,25,27	48
5	GOL	C	304	6/6	0.86	0.14	30,34,36,42	0
4	ACT	B	303	4/4	0.88	0.12	45,47,47,48	0
3	6KT	D	302	13/13	0.92	0.16	19,22,27,30	13
3	6KT	A	302	13/13	0.93	0.12	18,20,26,30	13
4	ACT	A	303	4/4	0.94	0.13	20,20,20,21	0
3	6KT	B	302	13/13	0.94	0.11	15,16,20,21	13
2	NAP	B	301	48/48	0.96	0.08	11,13,14,16	48
2	NAP	D	301	48/48	0.96	0.08	11,14,18,19	48
2	NAP	A	301	48/48	0.97	0.07	10,13,14,16	48

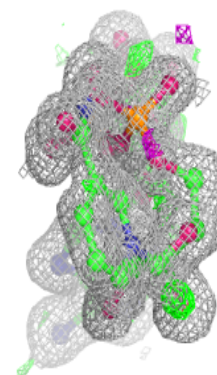
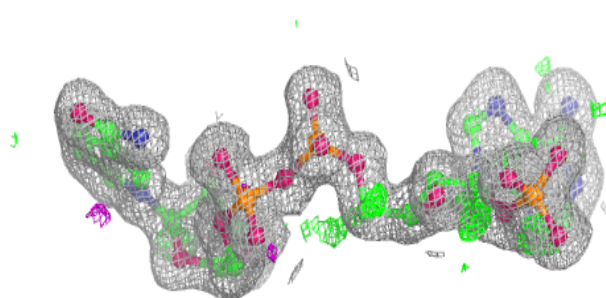
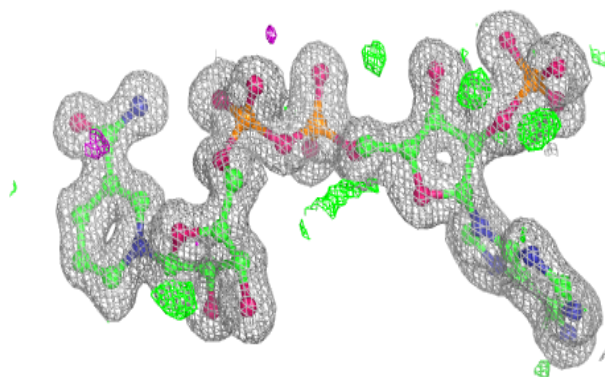
The following is a graphical depiction of the model fit to experimental electron density of all instances of the Ligand of Interest. In addition, ligands with molecular weight > 250 and outliers as shown on the geometry validation Tables will also be included. Each fit is shown from different orientation to approximate a three-dimensional view.

**Electron density around NAP C 301:**

$2mF_o-DF_c$  (at 0.7 rmsd) in gray  
 $mF_o-DF_c$  (at 3 rmsd) in purple (negative)  
and green (positive)

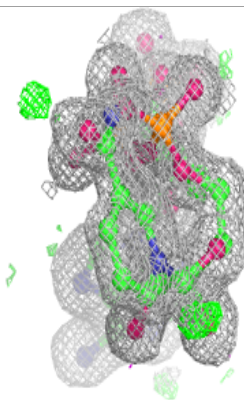
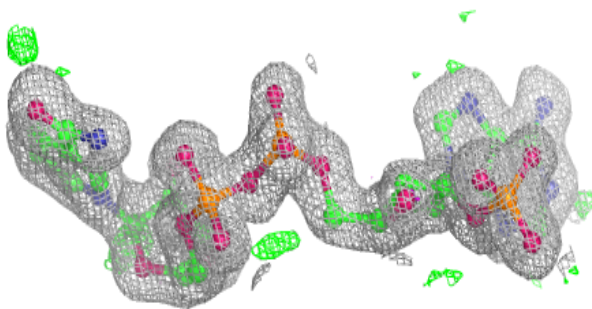
**Electron density around NAP B 301:**

$2mF_o-DF_c$  (at 0.7 rmsd) in gray  
 $mF_o-DF_c$  (at 3 rmsd) in purple (negative)  
and green (positive)

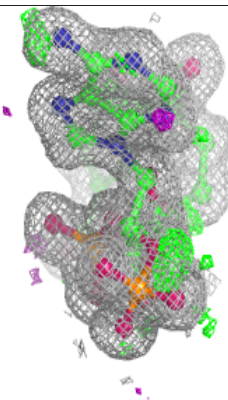
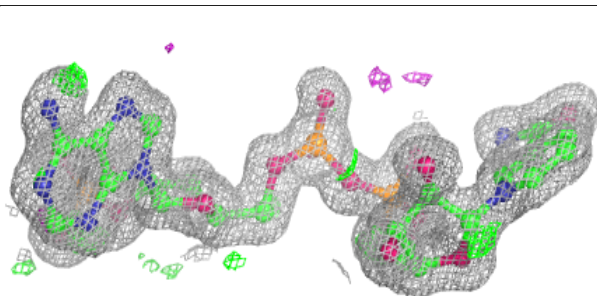
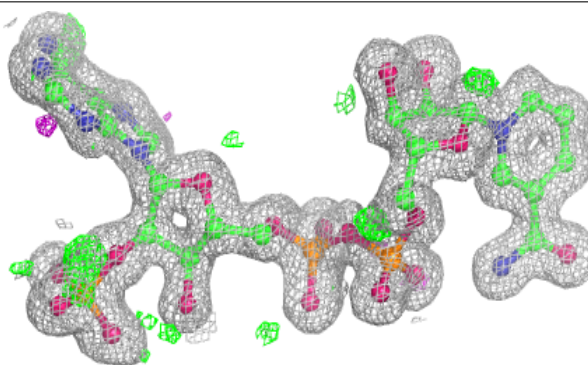


**Electron density around NAP D 301:**

$2mF_o-DF_c$  (at 0.7 rmsd) in gray  
 $mF_o-DF_c$  (at 3 rmsd) in purple (negative)  
and green (positive)

**Electron density around NAP A 301:**

$2mF_o-DF_c$  (at 0.7 rmsd) in gray  
 $mF_o-DF_c$  (at 3 rmsd) in purple (negative)  
and green (positive)



## 6.5 Other polymers [i](#)

There are no such residues in this entry.