



Full wwPDB X-ray Structure Validation Report ⓘ

Apr 28, 2024 – 05:40 pm BST

PDB ID : 6G3O
Title : Crystal structure of human HDAC2 in complex with (R)-6-[3,4-Dioxo-2-(4-trifluoromethoxy-phenylamino)-cyclobut-1-enylamino]-heptanoic acid hydroxyamide
Authors : Isabet, T.; Aurelly, M.; Chantalat, L.; Thoreau, E.
Deposited on : 2018-03-26
Resolution : 2.27 Å(reported)

This is a Full wwPDB X-ray Structure Validation Report for a publicly released PDB entry.

We welcome your comments at validation@mail.wwpdb.org

A user guide is available at

<https://www.wwpdb.org/validation/2017/XrayValidationReportHelp>

with specific help available everywhere you see the ⓘ symbol.

The types of validation reports are described at

<http://www.wwpdb.org/validation/2017/FAQs#types>.

The following versions of software and data (see [references ⓘ](#)) were used in the production of this report:

MolProbity : 4.02b-467
Mogul : 1.8.4, CSD as541be (2020)
Xtriage (Phenix) : 1.13
EDS : 2.36.2
buster-report : 1.1.7 (2018)
Percentile statistics : 20191225.v01 (using entries in the PDB archive December 25th 2019)
Refmac : 5.8.0158
CCP4 : 7.0.044 (Gargrove)
Ideal geometry (proteins) : Engh & Huber (2001)
Ideal geometry (DNA, RNA) : Parkinson et al. (1996)
Validation Pipeline (wwPDB-VP) : 2.36.2

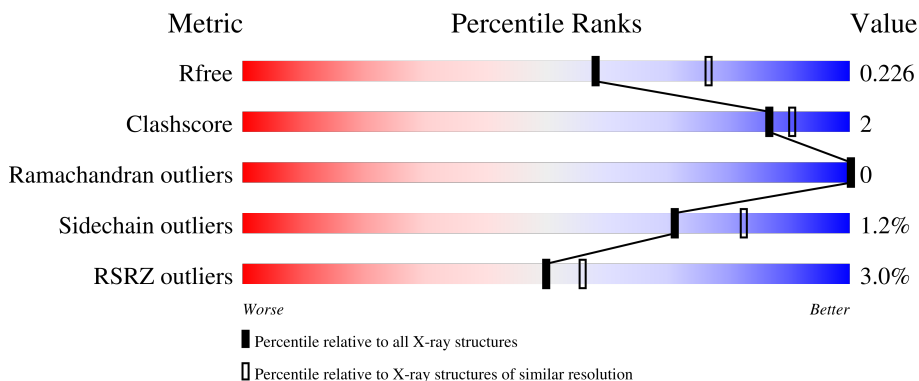
1 Overall quality at a glance

The following experimental techniques were used to determine the structure:

X-RAY DIFFRACTION

The reported resolution of this entry is 2.27 Å.

Percentile scores (ranging between 0-100) for global validation metrics of the entry are shown in the following graphic. The table shows the number of entries on which the scores are based.



Metric	Whole archive (#Entries)	Similar resolution (#Entries, resolution range(Å))
R_{free}	130704	6980 (2.30-2.26)
Clashscore	141614	7711 (2.30-2.26)
Ramachandran outliers	138981	7597 (2.30-2.26)
Sidechain outliers	138945	7598 (2.30-2.26)
RSRZ outliers	127900	6849 (2.30-2.26)

The table below summarises the geometric issues observed across the polymeric chains and their fit to the electron density. The red, orange, yellow and green segments of the lower bar indicate the fraction of residues that contain outliers for ≥ 3 , 2, 1 and 0 types of geometric quality criteria respectively. A grey segment represents the fraction of residues that are not modelled. The numeric value for each fraction is indicated below the corresponding segment, with a dot representing fractions $\leq 5\%$. The upper red bar (where present) indicates the fraction of residues that have poor fit to the electron density. The numeric value is given above the bar.

Mol	Chain	Length	Quality of chain
1	A	370	95% 5%
1	B	370	91% 8% .
1	C	370	8% 93% 6% .

The following table lists non-polymeric compounds, carbohydrate monomers and non-standard

residues in protein, DNA, RNA chains that are outliers for geometric or electron-density-fit criteria:

Mol	Type	Chain	Res	Chirality	Geometry	Clashes	Electron density
7	SO4	B	1006	-	-	-	X

2 Entry composition [i](#)

There are 9 unique types of molecules in this entry. The entry contains 9438 atoms, of which 0 are hydrogens and 0 are deuteriums.

In the tables below, the ZeroOcc column contains the number of atoms modelled with zero occupancy, the AltConf column contains the number of residues with at least one atom in alternate conformation and the Trace column contains the number of residues modelled with at most 2 atoms.

- Molecule 1 is a protein called Histone deacetylase 2.

Mol	Chain	Residues	Atoms					ZeroOcc	AltConf	Trace
			Total	C	N	O	S			
1	A	369	2952	1887	500	541	24	0	0	0
1	B	366	2953	1885	498	545	25	0	1	0
1	C	366	2929	1872	492	541	24	0	0	0

- Molecule 2 is ZINC ION (three-letter code: ZN) (formula: Zn).

Mol	Chain	Residues	Atoms		ZeroOcc	AltConf
2	A	1	Total	Zn	0	0
			1	1		
2	B	1	Total	Zn	0	0
			1	1		
2	C	1	Total	Zn	0	0
			1	1		

- Molecule 3 is CALCIUM ION (three-letter code: CA) (formula: Ca).

Mol	Chain	Residues	Atoms		ZeroOcc	AltConf
3	A	1	Total	Ca	0	0
			1	1		
3	B	1	Total	Ca	0	0
			1	1		
3	C	1	Total	Ca	0	0
			1	1		

- Molecule 4 is SODIUM ION (three-letter code: NA) (formula: Na).

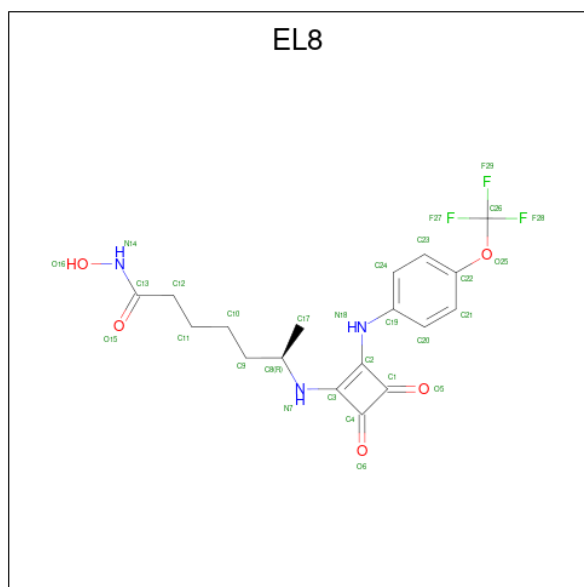
Mol	Chain	Residues	Atoms		ZeroOcc	AltConf
4	A	1	Total	Na	0	0
			1	1		

Continued on next page...

Continued from previous page...

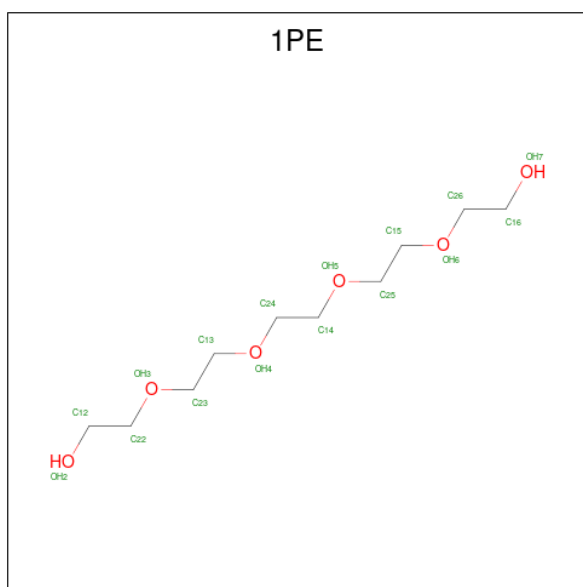
Mol	Chain	Residues	Atoms	ZeroOcc	AltConf
4	B	1	Total Na 1 1	0	0
4	C	1	Total Na 1 1	0	0

- Molecule 5 is (6 {R})-6-[[3,4-bis(oxidanylidene)-2-[[4-(trifluoromethoxy)phenyl]amino]cyclobuten-1-yl]amino]-{N}-oxidanyl-heptanamide (three-letter code: EL8) (formula: $C_{18}H_{20}F_3N_3O_5$).



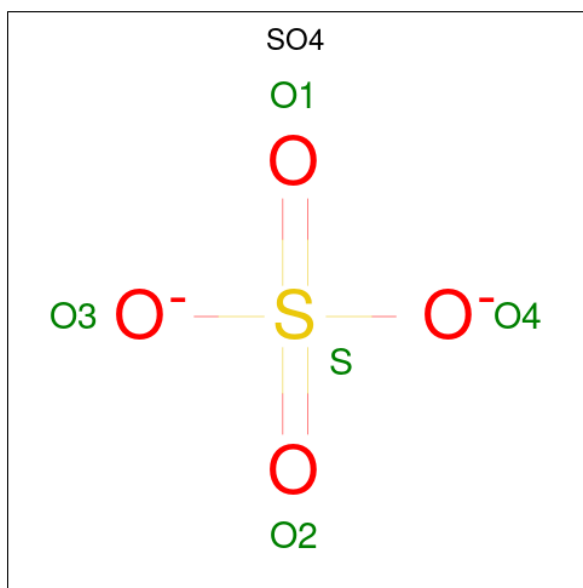
Mol	Chain	Residues	Atoms	ZeroOcc	AltConf
5	A	1	Total C F N O 29 18 3 3 5	0	0
5	B	1	Total C F N O 29 18 3 3 5	0	0
5	C	1	Total C F N O 29 18 3 3 5	0	0

- Molecule 6 is PENTAETHYLENE GLYCOL (three-letter code: 1PE) (formula: $C_{10}H_{22}O_6$).



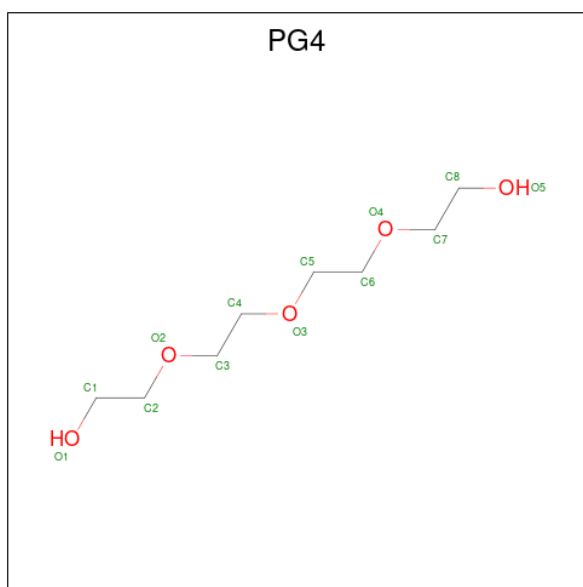
Mol	Chain	Residues	Atoms		ZeroOcc	AltConf
6	B	1	Total	C O	0	0
			16	10 6		

- Molecule 7 is SULFATE ION (three-letter code: SO₄) (formula: O₄S).



Mol	Chain	Residues	Atoms		ZeroOcc	AltConf
7	B	1	Total	O S	0	0
			5	4 1		
7	C	1	Total	O S	0	0
			5	4 1		

- Molecule 8 is TETRAETHYLENE GLYCOL (three-letter code: PG₄) (formula: C₈H₁₈O₅).



Mol	Chain	Residues	Atoms			ZeroOcc	AltConf
8	B	1	Total	C	O	0	0
			13	8	5		

- Molecule 9 is water.

Mol	Chain	Residues	Atoms		ZeroOcc	AltConf
9	A	161	Total	O	0	0
			161	161		
9	B	202	Total	O	0	0
			202	202		
9	C	106	Total	O	0	0
			106	106		

3 Residue-property plots [i](#)

These plots are drawn for all protein, RNA, DNA and oligosaccharide chains in the entry. The first graphic for a chain summarises the proportions of the various outlier classes displayed in the second graphic. The second graphic shows the sequence view annotated by issues in geometry and electron density. Residues are color-coded according to the number of geometric quality criteria for which they contain at least one outlier: green = 0, yellow = 1, orange = 2 and red = 3 or more. A red dot above a residue indicates a poor fit to the electron density ($RSRZ > 2$). Stretches of 2 or more consecutive residues without any outlier are shown as a green connector. Residues present in the sample, but not in the model, are shown in grey.

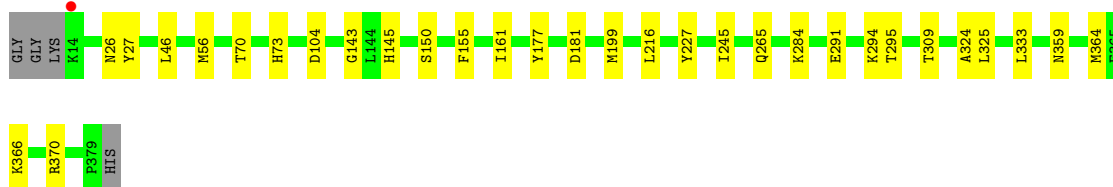
- Molecule 1: Histone deacetylase 2

Chain A:  95% 5%



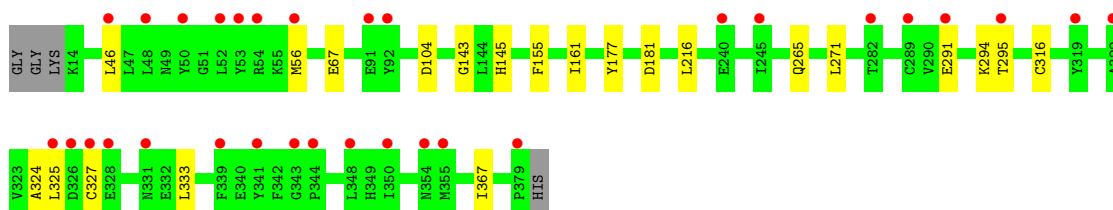
- Molecule 1: Histone deacetylase 2

Chain B:  91% 8%



- Molecule 1: Histone deacetylase 2

Chain C:  8% 93% 6%



4 Data and refinement statistics i

Property	Value	Source
Space group	P 21 21 21	Depositor
Cell constants a, b, c, α , β , γ	92.05Å 93.30Å 139.42Å 90.00° 90.00° 90.00°	Depositor
Resolution (Å)	33.26 – 2.27 47.74 – 2.27	Depositor EDS
% Data completeness (in resolution range)	99.2 (33.26-2.27) 99.1 (47.74-2.27)	Depositor EDS
R_{merge}	(Not available)	Depositor
R_{sym}	(Not available)	Depositor
$\langle I/\sigma(I) \rangle$ ¹	1.06 (at 2.27Å)	Xtrriage
Refinement program	BUSTER 2.10.3	Depositor
R, R_{free}	0.172 , 0.219 0.178 , 0.226	Depositor DCC
R_{free} test set	2779 reflections (5.00%)	wwPDB-VP
Wilson B-factor (Å ²)	39.8	Xtrriage
Anisotropy	0.782	Xtrriage
Bulk solvent k_{sol} (e/Å ³), B_{sol} (Å ²)	0.36 , 60.4	EDS
L-test for twinning ²	$\langle L \rangle = 0.48$, $\langle L^2 \rangle = 0.31$	Xtrriage
Estimated twinning fraction	0.022 for k,h,-l	Xtrriage
F_o, F_c correlation	0.96	EDS
Total number of atoms	9438	wwPDB-VP
Average B, all atoms (Å ²)	53.0	wwPDB-VP

Xtrriage's analysis on translational NCS is as follows: *The largest off-origin peak in the Patterson function is 3.55% of the height of the origin peak. No significant pseudotranslation is detected.*

¹Intensities estimated from amplitudes.

²Theoretical values of $\langle |L| \rangle$, $\langle L^2 \rangle$ for acentric reflections are 0.5, 0.333 respectively for untwinned datasets, and 0.375, 0.2 for perfectly twinned datasets.

5 Model quality [i](#)

5.1 Standard geometry [i](#)

Bond lengths and bond angles in the following residue types are not validated in this section: 1PE, CA, PG4, NA, SO4, ZN, EL8

The Z score for a bond length (or angle) is the number of standard deviations the observed value is removed from the expected value. A bond length (or angle) with $|Z| > 5$ is considered an outlier worth inspection. RMSZ is the root-mean-square of all Z scores of the bond lengths (or angles).

Mol	Chain	Bond lengths		Bond angles	
		RMSZ	# Z >5	RMSZ	# Z >5
1	A	0.50	0/3029	0.66	0/4090
1	B	0.53	0/3030	0.65	1/4093 (0.0%)
1	C	0.50	0/3006	0.66	0/4064
All	All	0.51	0/9065	0.65	1/12247 (0.0%)

There are no bond length outliers.

All (1) bond angle outliers are listed below:

Mol	Chain	Res	Type	Atoms	Z	Observed(°)	Ideal(°)
1	B	309	THR	N-CA-C	-5.00	97.50	111.00

There are no chirality outliers.

There are no planarity outliers.

5.2 Too-close contacts [i](#)

In the following table, the Non-H and H(model) columns list the number of non-hydrogen atoms and hydrogen atoms in the chain respectively. The H(added) column lists the number of hydrogen atoms added and optimized by MolProbity. The Clashes column lists the number of clashes within the asymmetric unit, whereas Symm-Clashes lists symmetry-related clashes.

Mol	Chain	Non-H	H(model)	H(added)	Clashes	Symm-Clashes
1	A	2952	0	2854	9	0
1	B	2953	0	2848	18	0
1	C	2929	0	2812	10	0
2	A	1	0	0	0	0
2	B	1	0	0	0	0
2	C	1	0	0	0	0
3	A	1	0	0	0	0

Continued on next page...

Continued from previous page...

Mol	Chain	Non-H	H(model)	H(added)	Clashes	Symm-Clashes
3	B	1	0	0	0	0
3	C	1	0	0	0	0
4	A	1	0	0	0	0
4	B	1	0	0	0	0
4	C	1	0	0	0	0
5	A	29	0	0	1	0
5	B	29	0	0	0	0
5	C	29	0	0	0	0
6	B	16	0	22	4	0
7	B	5	0	0	0	0
7	C	5	0	0	0	0
8	B	13	0	18	2	0
9	A	161	0	0	1	0
9	B	202	0	0	0	0
9	C	106	0	0	0	0
All	All	9438	0	8554	37	0

The all-atom clashscore is defined as the number of clashes found per 1000 atoms (including hydrogen atoms). The all-atom clashscore for this structure is 2.

All (37) close contacts within the same asymmetric unit are listed below, sorted by their clash magnitude.

Atom-1	Atom-2	Interatomic distance (Å)	Clash overlap (Å)
1:B:284:LYS:HE2	6:B:1005:1PE:H221	1.66	0.76
1:C:56:MET:HB3	1:C:325:LEU:HD21	1.76	0.67
1:C:216:LEU:HD13	1:C:367:ILE:HG23	1.87	0.57
1:B:284:LYS:CE	6:B:1005:1PE:H221	2.35	0.56
1:B:27:TYR:CE1	8:B:1007:PG4:H61	2.42	0.55
1:A:56:MET:HB3	1:A:325:LEU:HD21	1.87	0.55
1:B:245:ILE:HG12	1:B:364:MET:CE	2.37	0.55
1:B:26:ASN:HD22	8:B:1007:PG4:H41	1.73	0.52
1:C:46:LEU:HD11	1:C:333:LEU:HD22	1.92	0.51
1:A:60:ARG:HG2	9:A:1132:HOH:O	2.09	0.51
1:B:216:LEU:HD21	1:B:370:ARG:HD3	1.94	0.50
1:A:245:ILE:HG12	1:A:364:MET:CE	2.42	0.49
1:B:181:ASP:HB2	1:B:265:GLN:OE1	2.14	0.47
1:C:143:GLY:HA2	1:C:161:ILE:HD11	1.96	0.47
1:B:70:THR:HA	1:B:73:HIS:O	2.16	0.46
1:C:291:GLU:O	1:C:295:THR:HG23	2.15	0.46
1:C:271:LEU:HD11	1:C:316:CYS:HB2	1.98	0.46
1:A:181:ASP:HB2	1:A:265:GLN:OE1	2.16	0.46

Continued on next page...

Continued from previous page...

Atom-1	Atom-2	Interatomic distance (Å)	Clash overlap (Å)
6:B:1005:1PE:H152	1:C:67:GLU:HB3	1.97	0.46
1:A:143:GLY:HA2	1:A:161:ILE:HD11	1.98	0.45
1:B:46:LEU:HD11	1:B:333:LEU:HD22	1.97	0.45
1:C:181:ASP:HB2	1:C:265:GLN:OE1	2.17	0.45
1:B:291:GLU:O	1:B:295:THR:HG23	2.17	0.44
1:C:294:LYS:HD2	1:C:324:ALA:HA	1.99	0.44
1:B:56:MET:HB3	1:B:325:LEU:HD21	1.99	0.44
1:B:366:LYS:HE3	1:B:370:ARG:HE	1.83	0.43
1:A:161:ILE:HG21	1:A:177:TYR:CE1	2.54	0.42
1:C:161:ILE:HG21	1:C:177:TYR:CE1	2.55	0.41
1:B:161:ILE:HG21	1:B:177:TYR:CE1	2.54	0.41
1:A:271:LEU:HD11	1:A:316:CYS:HB2	2.01	0.41
1:B:143:GLY:HA2	1:B:161:ILE:HD11	2.02	0.41
1:A:216:LEU:HD13	1:A:367:ILE:HG23	2.02	0.41
1:B:284:LYS:CE	6:B:1005:1PE:H131	2.51	0.41
1:B:359:ASN:HB3	1:B:364:MET:SD	2.61	0.41
1:B:199:MET:HA	1:B:227:TYR:O	2.21	0.41
1:B:294:LYS:HD2	1:B:324:ALA:HA	2.04	0.40
1:A:146:HIS:NE2	5:A:1004:EL8:N14	2.70	0.40

There are no symmetry-related clashes.

5.3 Torsion angles [i](#)

5.3.1 Protein backbone [i](#)

In the following table, the Percentiles column shows the percent Ramachandran outliers of the chain as a percentile score with respect to all X-ray entries followed by that with respect to entries of similar resolution.

The Analysed column shows the number of residues for which the backbone conformation was analysed, and the total number of residues.

Mol	Chain	Analysed	Favoured	Allowed	Outliers	Percentiles	
1	A	367/370 (99%)	360 (98%)	7 (2%)	0	100	100
1	B	365/370 (99%)	358 (98%)	7 (2%)	0	100	100
1	C	364/370 (98%)	357 (98%)	7 (2%)	0	100	100
All	All	1096/1110 (99%)	1075 (98%)	21 (2%)	0	100	100

There are no Ramachandran outliers to report.

5.3.2 Protein sidechains [i](#)

In the following table, the Percentiles column shows the percent sidechain outliers of the chain as a percentile score with respect to all X-ray entries followed by that with respect to entries of similar resolution.

The Analysed column shows the number of residues for which the sidechain conformation was analysed, and the total number of residues.

Mol	Chain	Analysed	Rotameric	Outliers	Percentiles	
1	A	313/318 (98%)	310 (99%)	3 (1%)	76	86
1	B	316/318 (99%)	312 (99%)	4 (1%)	69	80
1	C	311/318 (98%)	307 (99%)	4 (1%)	69	80
All	All	940/954 (98%)	929 (99%)	11 (1%)	71	82

All (11) residues with a non-rotameric sidechain are listed below:

Mol	Chain	Res	Type
1	A	145	HIS
1	A	155	PHE
1	A	294	LYS
1	B	104	ASP
1	B	145	HIS
1	B	150	SER
1	B	155	PHE
1	C	104	ASP
1	C	145	HIS
1	C	155	PHE
1	C	327	CYS

Sometimes sidechains can be flipped to improve hydrogen bonding and reduce clashes. All (3) such sidechains are listed below:

Mol	Chain	Res	Type
1	A	132	GLN
1	B	132	GLN
1	C	132	GLN

5.3.3 RNA [i](#)

There are no RNA molecules in this entry.

5.4 Non-standard residues in protein, DNA, RNA chains [i](#)

There are no non-standard protein/DNA/RNA residues in this entry.

5.5 Carbohydrates [i](#)

There are no monosaccharides in this entry.

5.6 Ligand geometry [i](#)

Of 16 ligands modelled in this entry, 9 are monoatomic - leaving 7 for Mogul analysis.

In the following table, the Counts columns list the number of bonds (or angles) for which Mogul statistics could be retrieved, the number of bonds (or angles) that are observed in the model and the number of bonds (or angles) that are defined in the Chemical Component Dictionary. The Link column lists molecule types, if any, to which the group is linked. The Z score for a bond length (or angle) is the number of standard deviations the observed value is removed from the expected value. A bond length (or angle) with $|Z| > 2$ is considered an outlier worth inspection. RMSZ is the root-mean-square of all Z scores of the bond lengths (or angles).

Mol	Type	Chain	Res	Link	Bond lengths			Bond angles		
					Counts	RMSZ	# Z > 2	Counts	RMSZ	# Z > 2
5	EL8	B	1004	2	30,30,30	2.47	6 (20%)	39,42,42	1.55	6 (15%)
6	1PE	B	1005	-	15,15,15	0.29	0	14,14,14	0.47	0
7	SO4	B	1006	-	4,4,4	0.13	0	6,6,6	0.27	0
5	EL8	C	1004	2	30,30,30	2.69	4 (13%)	39,42,42	1.30	4 (10%)
8	PG4	B	1007	-	12,12,12	0.18	0	11,11,11	0.16	0
5	EL8	A	1004	2	30,30,30	2.23	6 (20%)	39,42,42	1.44	7 (17%)
7	SO4	C	1005	-	4,4,4	0.17	0	6,6,6	0.13	0

In the following table, the Chirals column lists the number of chiral outliers, the number of chiral centers analysed, the number of these observed in the model and the number defined in the Chemical Component Dictionary. Similar counts are reported in the Torsion and Rings columns. '-' means no outliers of that kind were identified.

Mol	Type	Chain	Res	Link	Chirals	Torsions	Rings
5	EL8	B	1004	2	-	3/22/38/38	0/2/2/2
6	1PE	B	1005	-	-	7/13/13/13	-
5	EL8	C	1004	2	-	1/22/38/38	0/2/2/2
8	PG4	B	1007	-	-	6/10/10/10	-
5	EL8	A	1004	2	-	2/22/38/38	0/2/2/2

All (16) bond length outliers are listed below:

Mol	Chain	Res	Type	Atoms	Z	Observed(Å)	Ideal(Å)
5	C	1004	EL8	C13-N14	12.89	1.46	1.32
5	B	1004	EL8	C13-N14	10.29	1.43	1.32
5	A	1004	EL8	C13-N14	9.30	1.42	1.32
5	B	1004	EL8	C3-C4	3.88	1.54	1.47
5	A	1004	EL8	O6-C4	-3.29	1.16	1.23
5	A	1004	EL8	C9-C8	3.20	1.58	1.53
5	C	1004	EL8	C3-C4	3.05	1.53	1.47
5	B	1004	EL8	C24-C19	3.03	1.44	1.39
5	B	1004	EL8	C23-C22	3.00	1.44	1.38
5	B	1004	EL8	C9-C8	2.97	1.57	1.53
5	B	1004	EL8	O6-C4	-2.83	1.17	1.23
5	C	1004	EL8	C20-C19	2.78	1.43	1.39
5	A	1004	EL8	C20-C19	2.48	1.43	1.39
5	A	1004	EL8	C3-C2	-2.39	1.37	1.41
5	C	1004	EL8	C3-C2	-2.39	1.37	1.41
5	A	1004	EL8	O16-N14	-2.01	1.35	1.40

All (17) bond angle outliers are listed below:

Mol	Chain	Res	Type	Atoms	Z	Observed(°)	Ideal(°)
5	B	1004	EL8	O15-C13-N14	-4.60	117.62	123.27
5	B	1004	EL8	O16-N14-C13	-4.27	113.49	119.79
5	A	1004	EL8	O16-N14-C13	-3.81	114.17	119.79
5	C	1004	EL8	O16-N14-C13	-3.16	115.12	119.79
5	A	1004	EL8	O15-C13-N14	-2.93	119.67	123.27
5	A	1004	EL8	C3-C2-C1	2.70	94.29	91.66
5	C	1004	EL8	C3-C2-C1	2.63	94.22	91.66
5	B	1004	EL8	C3-C2-C1	2.45	94.05	91.66
5	B	1004	EL8	O25-C22-C21	-2.42	109.06	119.16
5	B	1004	EL8	O15-C13-C12	2.38	126.37	122.02
5	C	1004	EL8	C3-C4-C1	-2.36	86.51	88.37
5	A	1004	EL8	C2-C1-C4	-2.35	86.52	88.37
5	B	1004	EL8	O25-C22-C23	2.31	128.84	119.16
5	A	1004	EL8	O15-C13-C12	2.21	126.07	122.02
5	A	1004	EL8	C10-C9-C8	-2.12	109.35	114.25
5	C	1004	EL8	O6-C4-C1	2.10	138.65	135.38
5	A	1004	EL8	C23-C22-C21	2.07	123.36	120.18

There are no chirality outliers.

All (19) torsion outliers are listed below:

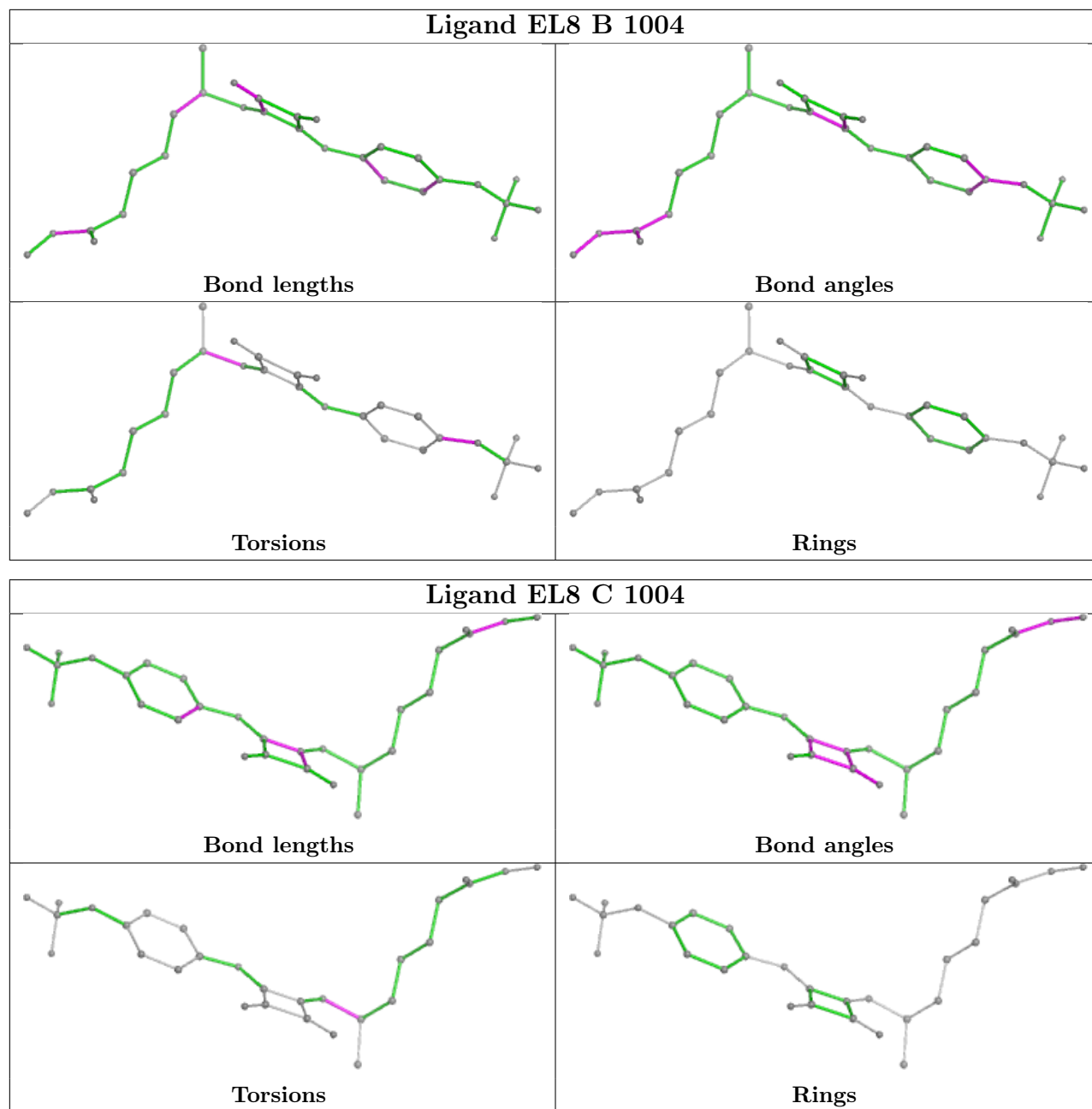
Mol	Chain	Res	Type	Atoms
5	B	1004	EL8	C9-C8-N7-C3
6	B	1005	1PE	OH7-C16-C26-OH6
8	B	1007	PG4	O3-C5-C6-O4
6	B	1005	1PE	OH6-C15-C25-OH5
8	B	1007	PG4	O2-C3-C4-O3
8	B	1007	PG4	O4-C7-C8-O5
5	A	1004	EL8	C17-C8-N7-C3
5	C	1004	EL8	C17-C8-N7-C3
6	B	1005	1PE	C15-C25-OH5-C14
8	B	1007	PG4	C8-C7-O4-C6
8	B	1007	PG4	C3-C4-O3-C5
5	B	1004	EL8	C23-C22-O25-C26
8	B	1007	PG4	C1-C2-O2-C3
5	A	1004	EL8	C12-C13-N14-O16
5	B	1004	EL8	C21-C22-O25-C26
6	B	1005	1PE	OH2-C12-C22-OH3
6	B	1005	1PE	OH4-C13-C23-OH3
6	B	1005	1PE	C24-C14-OH5-C25
6	B	1005	1PE	OH5-C14-C24-OH4

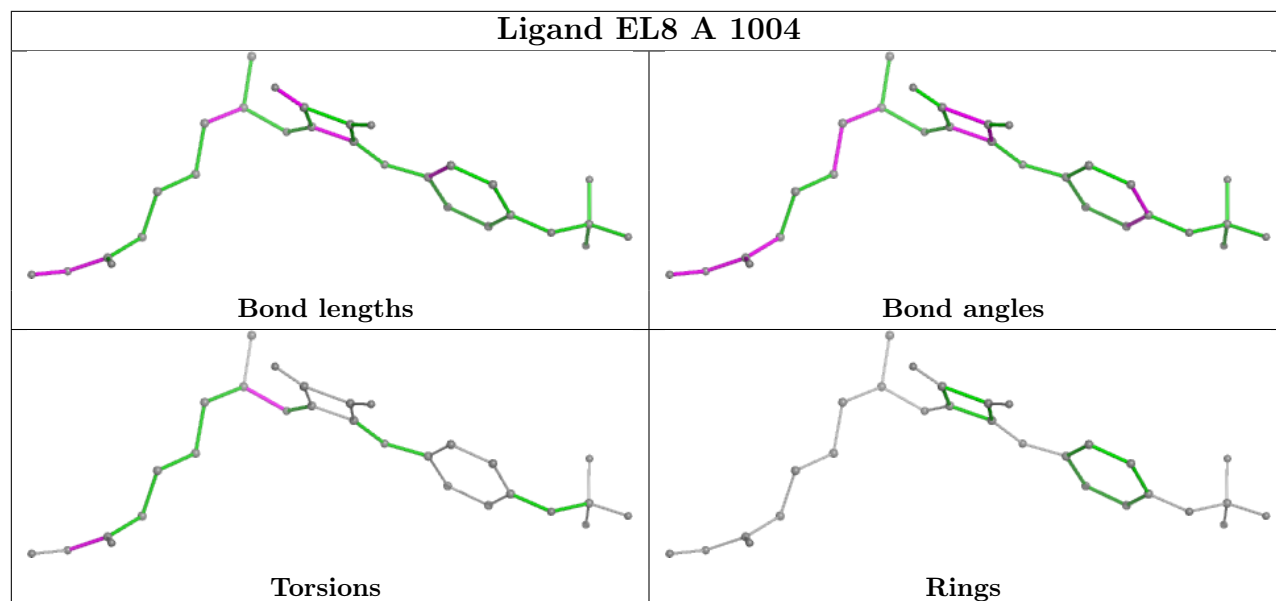
There are no ring outliers.

3 monomers are involved in 7 short contacts:

Mol	Chain	Res	Type	Clashes	Symm-Clashes
6	B	1005	1PE	4	0
8	B	1007	PG4	2	0
5	A	1004	EL8	1	0

The following is a two-dimensional graphical depiction of Mogul quality analysis of bond lengths, bond angles, torsion angles, and ring geometry for all instances of the Ligand of Interest. In addition, ligands with molecular weight > 250 and outliers as shown on the validation Tables will also be included. For torsion angles, if less than 5% of the Mogul distribution of torsion angles is within 10 degrees of the torsion angle in question, then that torsion angle is considered an outlier. Any bond that is central to one or more torsion angles identified as an outlier by Mogul will be highlighted in the graph. For rings, the root-mean-square deviation (RMSD) between the ring in question and similar rings identified by Mogul is calculated over all ring torsion angles. If the average RMSD is greater than 60 degrees and the minimal RMSD between the ring in question and any Mogul-identified rings is also greater than 60 degrees, then that ring is considered an outlier. The outliers are highlighted in purple. The color gray indicates Mogul did not find sufficient equivalents in the CSD to analyse the geometry.





5.7 Other polymers [i](#)

There are no such residues in this entry.

5.8 Polymer linkage issues [i](#)

There are no chain breaks in this entry.

6 Fit of model and data

6.1 Protein, DNA and RNA chains

In the following table, the column labelled ‘#RSRZ > 2’ contains the number (and percentage) of RSRZ outliers, followed by percent RSRZ outliers for the chain as percentile scores relative to all X-ray entries and entries of similar resolution. The OWAB column contains the minimum, median, 95th percentile and maximum values of the occupancy-weighted average B-factor per residue. The column labelled ‘Q < 0.9’ lists the number of (and percentage) of residues with an average occupancy less than 0.9.

Mol	Chain	Analysed	<RSRZ>	#RSRZ>2	OWAB(Å ²)	Q<0.9
1	A	369/370 (99%)	-0.04	1 (0%) 94 95	34, 48, 80, 121	0
1	B	366/370 (98%)	-0.05	1 (0%) 94 95	30, 43, 68, 94	0
1	C	366/370 (98%)	0.47	31 (8%) 10 14	34, 57, 90, 122	0
All	All	1101/1110 (99%)	0.13	33 (2%) 50 56	30, 48, 82, 122	0

All (33) RSRZ outliers are listed below:

Mol	Chain	Res	Type	RSRZ
1	C	240	GLU	4.1
1	C	245	ILE	4.0
1	A	171	TYR	4.0
1	C	348	LEU	3.9
1	C	343	GLY	3.7
1	C	52	LEU	3.7
1	C	325	LEU	3.4
1	C	327	CYS	3.3
1	C	91	GLU	3.3
1	C	344	PRO	3.1
1	C	354	ASN	3.0
1	C	328	GLU	2.9
1	C	341	TYR	2.8
1	C	46	LEU	2.7
1	C	326	ASP	2.7
1	C	282	THR	2.6
1	C	48	LEU	2.5
1	C	56	MET	2.5
1	C	53	TYR	2.4
1	C	319	TYR	2.3
1	C	355	MET	2.3
1	C	339	PHE	2.3
1	C	92	TYR	2.3

Continued on next page...

Continued from previous page...

Mol	Chain	Res	Type	RSRZ
1	B	14	LYS	2.3
1	C	350	ILE	2.2
1	C	379	PRO	2.2
1	C	289	CYS	2.1
1	C	322	ALA	2.1
1	C	295	THR	2.1
1	C	331	ASN	2.1
1	C	50	TYR	2.1
1	C	291	GLU	2.0
1	C	54	ARG	2.0

6.2 Non-standard residues in protein, DNA, RNA chains [i](#)

There are no non-standard protein/DNA/RNA residues in this entry.

6.3 Carbohydrates [i](#)

There are no monosaccharides in this entry.

6.4 Ligands [i](#)

In the following table, the Atoms column lists the number of modelled atoms in the group and the number defined in the chemical component dictionary. The B-factors column lists the minimum, median, 95th percentile and maximum values of B factors of atoms in the group. The column labelled 'Q< 0.9' lists the number of atoms with occupancy less than 0.9.

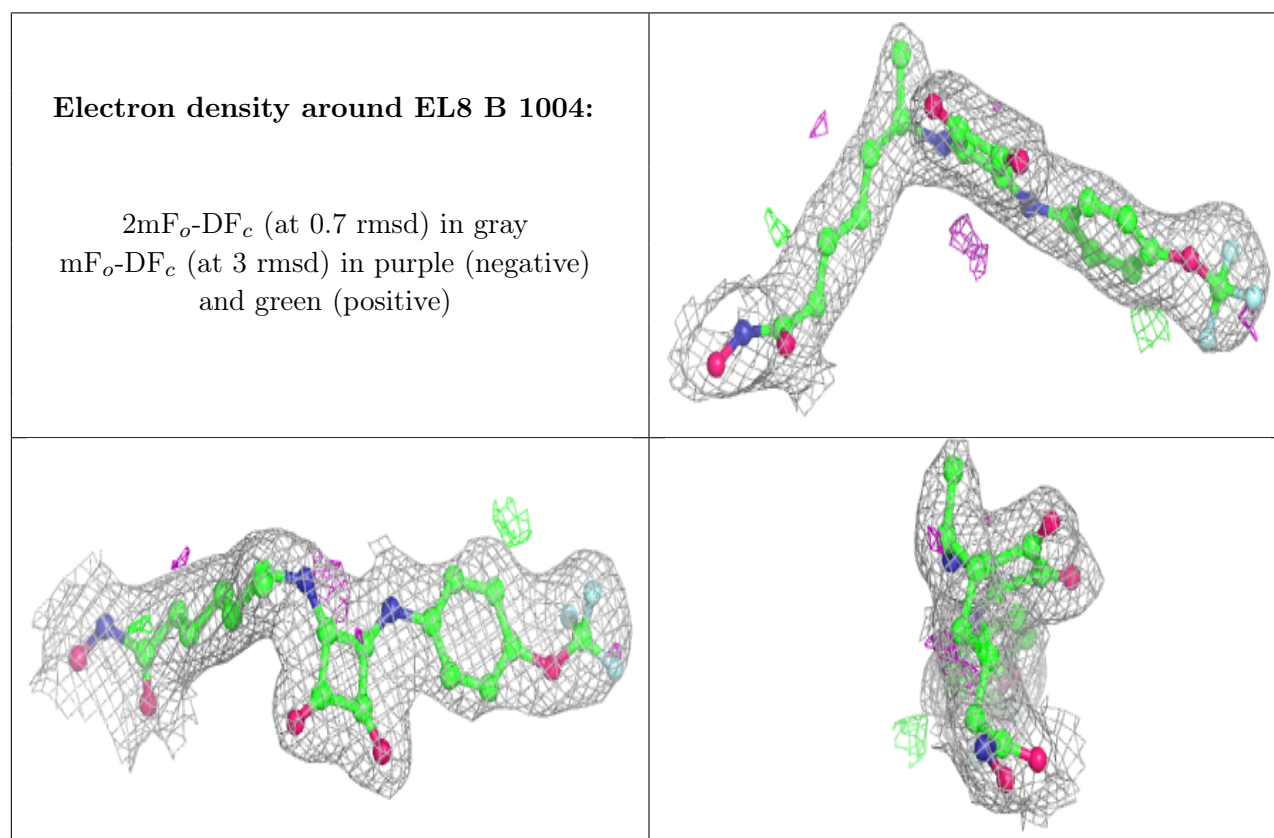
Mol	Type	Chain	Res	Atoms	RSCC	RSR	B-factors(Å ²)	Q<0.9
7	SO4	B	1006	5/5	0.70	0.48	145,146,146,146	0
4	NA	B	1003	1/1	0.82	0.21	53,53,53,53	0
8	PG4	B	1007	13/13	0.85	0.19	63,71,80,80	0
6	1PE	B	1005	16/16	0.87	0.19	62,64,74,74	0
7	SO4	C	1005	5/5	0.89	0.16	110,110,111,111	0
5	EL8	B	1004	29/29	0.94	0.14	34,42,62,67	0
5	EL8	C	1004	29/29	0.94	0.17	40,61,91,94	0
4	NA	A	1003	1/1	0.96	0.08	43,43,43,43	0
4	NA	C	1003	1/1	0.96	0.11	43,43,43,43	0
3	CA	C	1002	1/1	0.97	0.05	58,58,58,58	0
5	EL8	A	1004	29/29	0.97	0.14	35,51,74,78	0
3	CA	B	1002	1/1	0.99	0.07	43,43,43,43	0
2	ZN	C	1001	1/1	0.99	0.10	44,44,44,44	0

Continued on next page...

Continued from previous page...

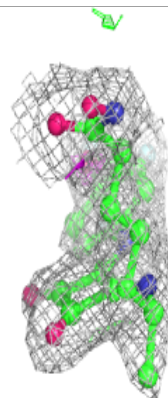
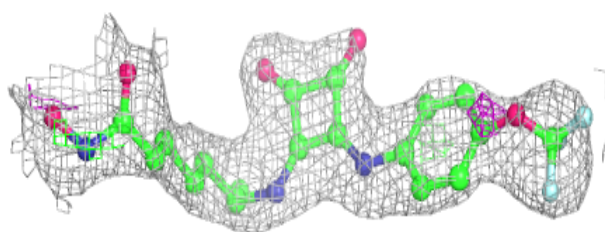
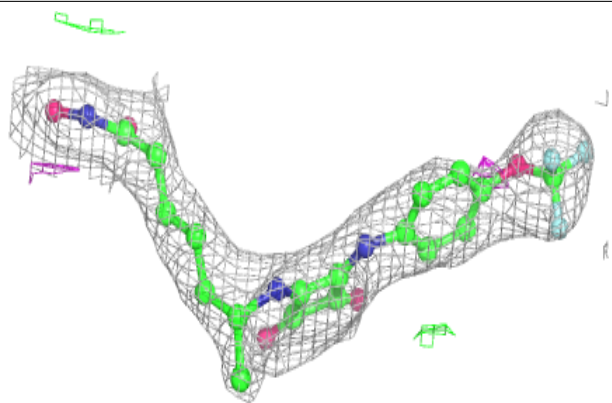
Mol	Type	Chain	Res	Atoms	RSCC	RSR	B-factors(\AA^2)	Q<0.9
3	CA	A	1002	1/1	0.99	0.11	45,45,45,45	0
2	ZN	A	1001	1/1	1.00	0.12	38,38,38,38	0
2	ZN	B	1001	1/1	1.00	0.14	36,36,36,36	0

The following is a graphical depiction of the model fit to experimental electron density of all instances of the Ligand of Interest. In addition, ligands with molecular weight > 250 and outliers as shown on the geometry validation Tables will also be included. Each fit is shown from different orientation to approximate a three-dimensional view.

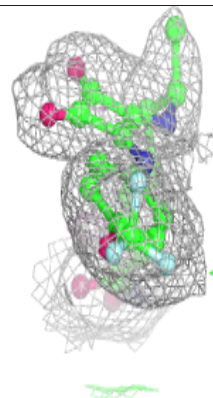
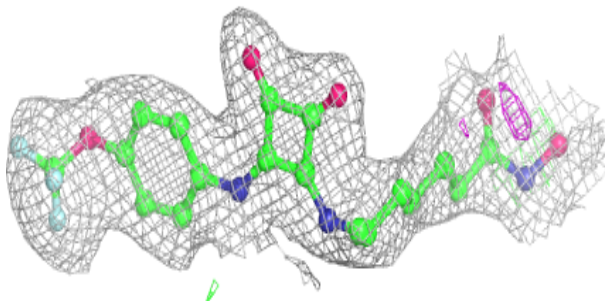
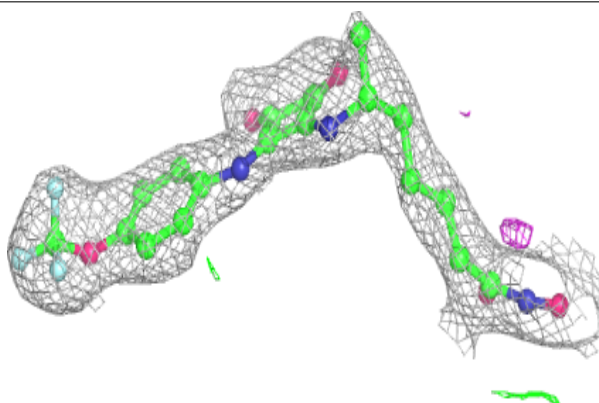


Electron density around EL8 C 1004:

$2mF_o-DF_c$ (at 0.7 rmsd) in gray
 mF_o-DF_c (at 3 rmsd) in purple (negative)
and green (positive)

**Electron density around EL8 A 1004:**

$2mF_o-DF_c$ (at 0.7 rmsd) in gray
 mF_o-DF_c (at 3 rmsd) in purple (negative)
and green (positive)



6.5 Other polymers [i](#)

There are no such residues in this entry.