



Full wwPDB X-ray Structure Validation Report ⓘ

Jun 23, 2024 – 06:08 AM EDT

PDB ID : 6FW2
Title : Crystal Structure of human mARC1
Authors : Kubitzka, C.; Scheidig, A.
Deposited on : 2018-03-05
Resolution : 1.78 Å(reported)

This is a Full wwPDB X-ray Structure Validation Report for a publicly released PDB entry.

We welcome your comments at validation@mail.wwpdb.org

A user guide is available at

<https://www.wwpdb.org/validation/2017/XrayValidationReportHelp>

with specific help available everywhere you see the ⓘ symbol.

The types of validation reports are described at

<http://www.wwpdb.org/validation/2017/FAQs#types>.

The following versions of software and data (see [references ⓘ](#)) were used in the production of this report:

MolProbity : 4.02b-467
Mogul : 2022.3.0, CSD as543be (2022)
Xtriage (Phenix) : 1.20.1
EDS : 2.37.1
buster-report : 1.1.7 (2018)
Percentile statistics : 20191225.v01 (using entries in the PDB archive December 25th 2019)
Refmac : 5.8.0158
CCP4 : 7.0.044 (Gargrove)
Ideal geometry (proteins) : Engh & Huber (2001)
Ideal geometry (DNA, RNA) : Parkinson et al. (1996)
Validation Pipeline (wwPDB-VP) : 2.37.1

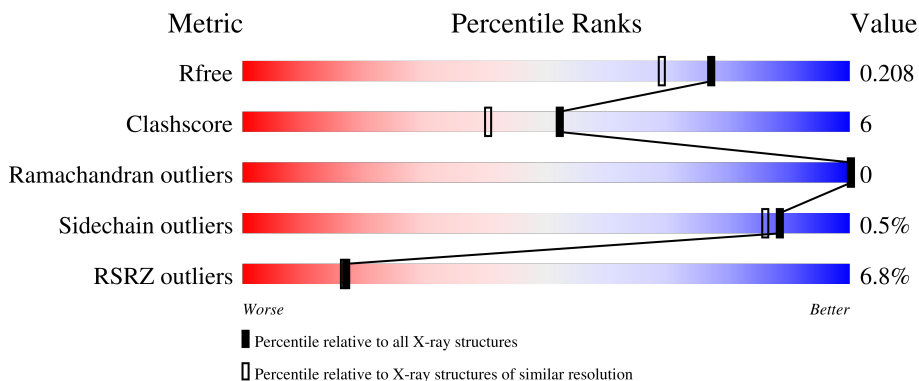
1 Overall quality at a glance

The following experimental techniques were used to determine the structure:

X-RAY DIFFRACTION

The reported resolution of this entry is 1.78 Å.

Percentile scores (ranging between 0-100) for global validation metrics of the entry are shown in the following graphic. The table shows the number of entries on which the scores are based.



Metric	Whole archive (#Entries)	Similar resolution (#Entries, resolution range(Å))
R_{free}	130704	9185 (1.80-1.76)
Clashscore	141614	10184 (1.80-1.76)
Ramachandran outliers	138981	10051 (1.80-1.76)
Sidechain outliers	138945	10050 (1.80-1.76)
RSRZ outliers	127900	9032 (1.80-1.76)

The table below summarises the geometric issues observed across the polymeric chains and their fit to the electron density. The red, orange, yellow and green segments of the lower bar indicate the fraction of residues that contain outliers for ≥ 3 , 2, 1 and 0 types of geometric quality criteria respectively. A grey segment represents the fraction of residues that are not modelled. The numeric value for each fraction is indicated below the corresponding segment, with a dot representing fractions $\leq 5\%$. The upper red bar (where present) indicates the fraction of residues that have poor fit to the electron density. The numeric value is given above the bar.

Mol	Chain	Length	Quality of chain
1	A	459	

2 Entry composition

There are 7 unique types of molecules in this entry. The entry contains 4072 atoms, of which 0 are hydrogens and 0 are deuteriums.

In the tables below, the ZeroOcc column contains the number of atoms modelled with zero occupancy, the AltConf column contains the number of residues with at least one atom in alternate conformation and the Trace column contains the number of residues modelled with at most 2 atoms.

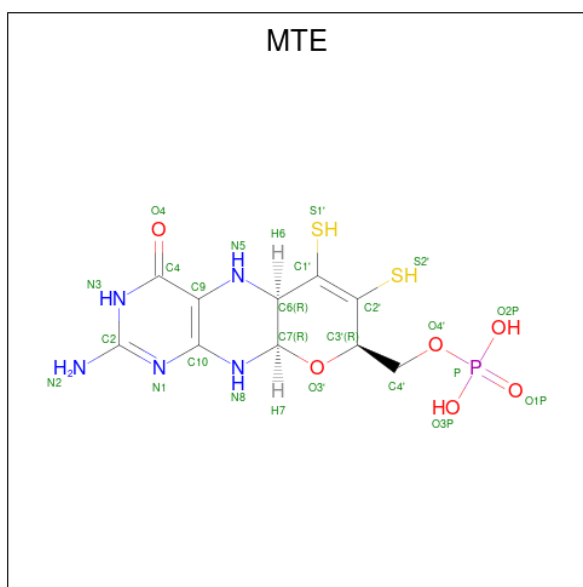
- Molecule 1 is a protein called Mitochondrial amidoxime-reducing component 1, Endolysin, Mitochondrial amidoxime-reducing component 1.

Mol	Chain	Residues	Atoms					ZeroOcc	AltConf	Trace
			Total	C	N	O	S			
1	A	444	3562	2242	631	666	23	0	8	0

There are 19 discrepancies between the modelled and reference sequences:

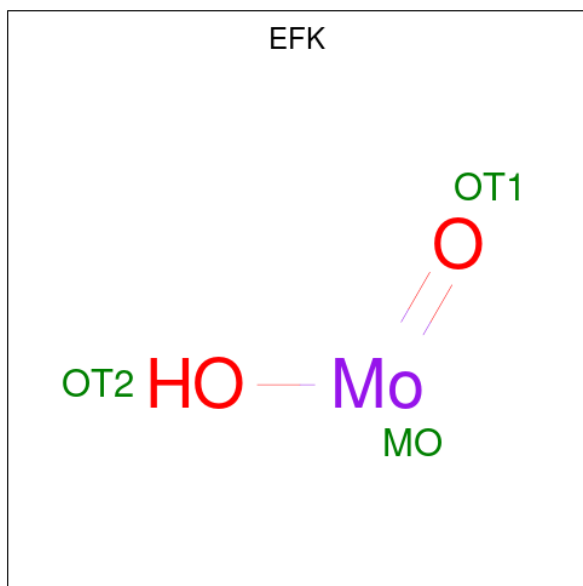
Chain	Residue	Modelled	Actual	Comment	Reference
A	48	MET	-	initiating methionine	UNP Q5VT66
A	49	ARG	-	expression tag	UNP Q5VT66
A	50	GLY	-	expression tag	UNP Q5VT66
A	51	SER	-	expression tag	UNP Q5VT66
A	52	MET	-	expression tag	UNP Q5VT66
A	1160	ALA	ALA	linker	UNP D9IEF7
A	1161	TYR	TYR	linker	UNP D9IEF7
A	165	ALA	THR	variant	UNP Q5VT66
A	337	GLN	-	expression tag	UNP Q5VT66
A	338	GLY	-	expression tag	UNP Q5VT66
A	339	THR	-	expression tag	UNP Q5VT66
A	340	VAL	-	expression tag	UNP Q5VT66
A	341	ASP	-	expression tag	UNP Q5VT66
A	342	HIS	-	expression tag	UNP Q5VT66
A	343	HIS	-	expression tag	UNP Q5VT66
A	344	HIS	-	expression tag	UNP Q5VT66
A	345	HIS	-	expression tag	UNP Q5VT66
A	346	HIS	-	expression tag	UNP Q5VT66
A	347	HIS	-	expression tag	UNP Q5VT66

- Molecule 2 is PHOSPHONIC ACID MONO-(2-AMINO-5,6-DIMERCAPTO-4-OXO-3,7,8A,9,10,10A-HEXAHYDRO-4H-8-OXA-1,3,9,10-TETRAAZA-ANTHRACEN-7-YLMETHYL) ESTER (three-letter code: MTE) (formula: C₁₀H₁₄N₅O₆PS₂).



Mol	Chain	Residues	Atoms					ZeroOcc	AltConf	
			Total	C	N	O	P			S
2	A	1	24	10	5	6	1	2	0	0

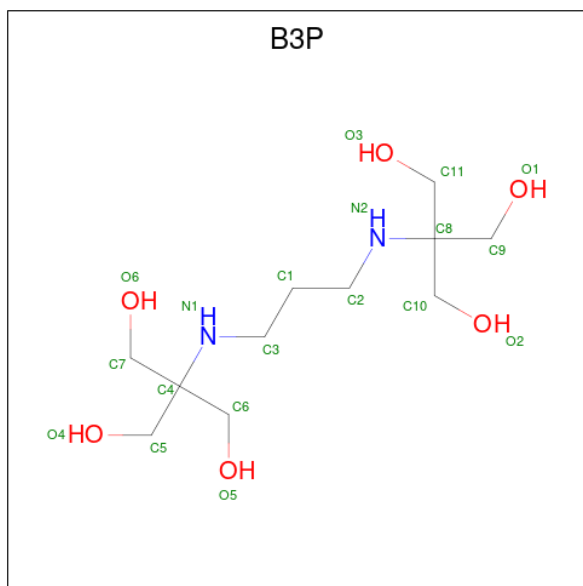
- Molecule 3 is oxidanyl(oxidanylidene)molybdenum (three-letter code: EFK) (formula: HMoO_2).



Mol	Chain	Residues	Atoms		ZeroOcc	AltConf	
			Total	Mo			O
3	A	1	3	1	2	0	0

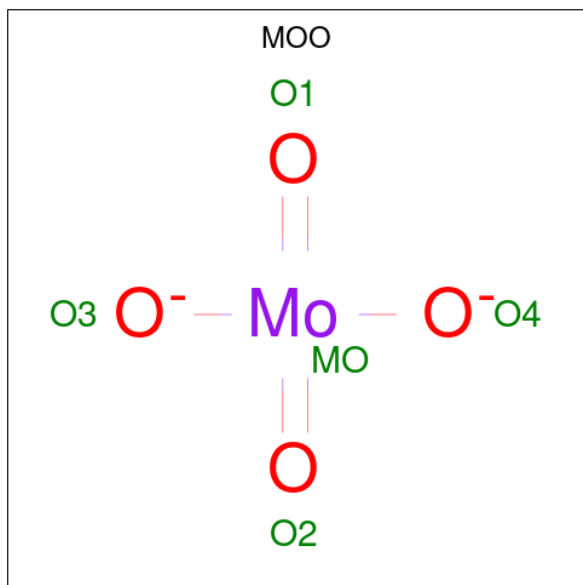
- Molecule 4 is 2-[3-(2-HYDROXY-1,1-DIHYDROXYMETHYL-ETHYLAMINO)-PROPYL AMINO]-2-HYDROXYMETHYL-PROPANE-1,3-DIOL (three-letter code: B3P) (formula:

$C_{11}H_{26}N_2O_6$).



Mol	Chain	Residues	Atoms			ZeroOcc	AltConf	
			Total	C	N			O
4	A	1	19	11	2	6	0	0

- Molecule 5 is MOLYBDATE ION (three-letter code: MOO) (formula: MoO_4).



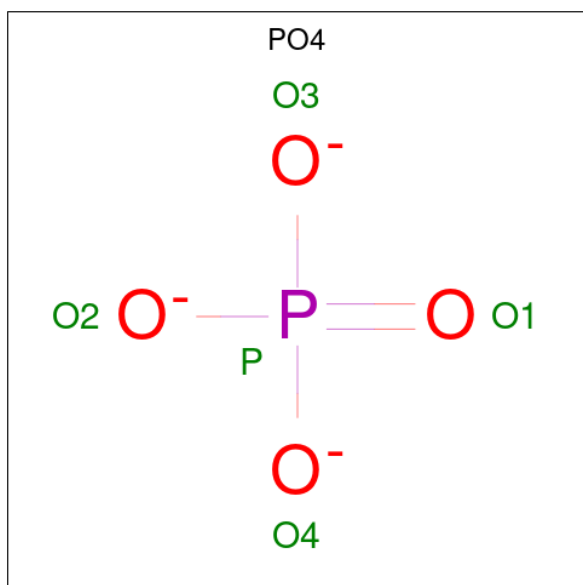
Mol	Chain	Residues	Atoms			ZeroOcc	AltConf
			Total	Mo	O		
5	A	1	5	1	4	0	0
5	A	1	5	1	4	0	0

Continued on next page...

Continued from previous page...

Mol	Chain	Residues	Atoms			ZeroOcc	AltConf
5	A	1	Total	Mo	O	0	0
			5	1	4		
5	A	1	Total	Mo	O	0	0
			5	1	4		

- Molecule 6 is PHOSPHATE ION (three-letter code: PO4) (formula: O₄P).



Mol	Chain	Residues	Atoms			ZeroOcc	AltConf
6	A	1	Total	O	P	0	0
			5	4	1		

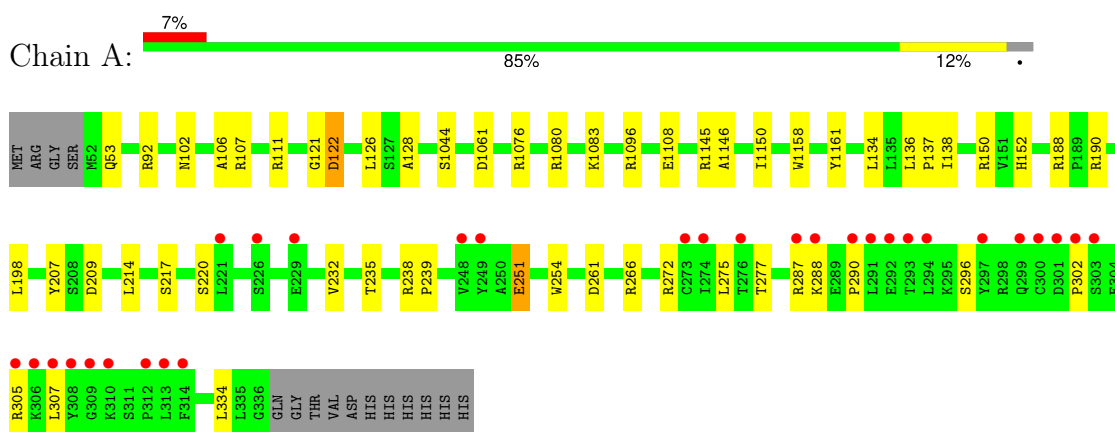
- Molecule 7 is water.

Mol	Chain	Residues	Atoms		ZeroOcc	AltConf
7	A	439	Total	O	0	0
			439	439		

3 Residue-property plots [i](#)

These plots are drawn for all protein, RNA, DNA and oligosaccharide chains in the entry. The first graphic for a chain summarises the proportions of the various outlier classes displayed in the second graphic. The second graphic shows the sequence view annotated by issues in geometry and electron density. Residues are color-coded according to the number of geometric quality criteria for which they contain at least one outlier: green = 0, yellow = 1, orange = 2 and red = 3 or more. A red dot above a residue indicates a poor fit to the electron density ($RSRZ > 2$). Stretches of 2 or more consecutive residues without any outlier are shown as a green connector. Residues present in the sample, but not in the model, are shown in grey.

- Molecule 1: Mitochondrial amidoxime-reducing component 1,Endolysin,Mitochondrial amidoxime-reducing component 1



4 Data and refinement statistics

Property	Value	Source
Space group	P 21 21 21	Depositor
Cell constants a, b, c, α , β , γ	61.13Å 74.82Å 110.73Å 90.00° 90.00° 90.00°	Depositor
Resolution (Å)	43.57 – 1.78 43.53 – 1.78	Depositor EDS
% Data completeness (in resolution range)	91.5 (43.57-1.78) 91.5 (43.53-1.78)	Depositor EDS
R_{merge}	0.08	Depositor
R_{sym}	(Not available)	Depositor
$\langle I/\sigma(I) \rangle$ ¹	2.13 (at 1.78Å)	Xtrriage
Refinement program	REFMAC	Depositor
R, R_{free}	0.169 , 0.208 0.169 , 0.208	Depositor DCC
R_{free} test set	2288 reflections (5.04%)	wwPDB-VP
Wilson B-factor (Å ²)	22.2	Xtrriage
Anisotropy	0.101	Xtrriage
Bulk solvent k_{sol} (e/Å ³), B_{sol} (Å ²)	0.38 , 49.8	EDS
L-test for twinning ²	$\langle L \rangle = 0.49$, $\langle L^2 \rangle = 0.32$	Xtrriage
Estimated twinning fraction	No twinning to report.	Xtrriage
F_o, F_c correlation	0.96	EDS
Total number of atoms	4072	wwPDB-VP
Average B, all atoms (Å ²)	29.0	wwPDB-VP

Xtrriage's analysis on translational NCS is as follows: *The largest off-origin peak in the Patterson function is 5.02% of the height of the origin peak. No significant pseudotranslation is detected.*

¹Intensities estimated from amplitudes.

²Theoretical values of $\langle |L| \rangle$, $\langle L^2 \rangle$ for acentric reflections are 0.5, 0.333 respectively for untwinned datasets, and 0.375, 0.2 for perfectly twinned datasets.

5 Model quality i

5.1 Standard geometry i

Bond lengths and bond angles in the following residue types are not validated in this section: B3P, EFK, MTE, MOO, PO4

The Z score for a bond length (or angle) is the number of standard deviations the observed value is removed from the expected value. A bond length (or angle) with $|Z| > 5$ is considered an outlier worth inspection. RMSZ is the root-mean-square of all Z scores of the bond lengths (or angles).

Mol	Chain	Bond lengths		Bond angles	
		RMSZ	# Z >5	RMSZ	# Z >5
1	A	1.21	5/3629 (0.1%)	1.19	12/4912 (0.2%)

Chiral center outliers are detected by calculating the chiral volume of a chiral center and verifying if the center is modelled as a planar moiety or with the opposite hand. A planarity outlier is detected by checking planarity of atoms in a peptide group, atoms in a mainchain group or atoms of a sidechain that are expected to be planar.

Mol	Chain	#Chirality outliers	#Planarity outliers
1	A	0	1

All (5) bond length outliers are listed below:

Mol	Chain	Res	Type	Atoms	Z	Observed(Å)	Ideal(Å)
1	A	207	TYR	CG-CD1	6.20	1.47	1.39
1	A	92	ARG	CZ-NH2	5.70	1.40	1.33
1	A	1044	SER	CB-OG	-5.66	1.34	1.42
1	A	1158	TRP	CE3-CZ3	5.45	1.47	1.38
1	A	251	GLU	CD-OE1	5.28	1.31	1.25

All (12) bond angle outliers are listed below:

Mol	Chain	Res	Type	Atoms	Z	Observed(°)	Ideal(°)
1	A	150	ARG	NE-CZ-NH1	8.02	124.31	120.30
1	A	1145	ARG	NE-CZ-NH1	-7.64	116.48	120.30
1	A	1161	TYR	O-C-N	-7.55	110.62	122.70
1	A	190	ARG	NE-CZ-NH1	6.38	123.49	120.30
1	A	214	LEU	CB-CG-CD1	-6.14	100.57	111.00
1	A	272	ARG	NE-CZ-NH2	5.95	123.28	120.30
1	A	150	ARG	NE-CZ-NH2	-5.92	117.34	120.30
1	A	1108	GLU	N-CA-CB	-5.55	100.60	110.60

Continued on next page...

Continued from previous page...

Mol	Chain	Res	Type	Atoms	Z	Observed(°)	Ideal(°)
1	A	111	ARG	NE-CZ-NH2	-5.31	117.64	120.30
1	A	1096	ARG	NE-CZ-NH1	-5.23	117.69	120.30
1	A	1161	TYR	CA-C-N	5.17	128.57	117.20
1	A	266	ARG	NE-CZ-NH1	5.09	122.85	120.30

There are no chirality outliers.

All (1) planarity outliers are listed below:

Mol	Chain	Res	Type	Group
1	A	128	ALA	Mainchain

5.2 Too-close contacts [i](#)

In the following table, the Non-H and H(model) columns list the number of non-hydrogen atoms and hydrogen atoms in the chain respectively. The H(added) column lists the number of hydrogen atoms added and optimized by MolProbity. The Clashes column lists the number of clashes within the asymmetric unit, whereas Symm-Clashes lists symmetry-related clashes.

Mol	Chain	Non-H	H(model)	H(added)	Clashes	Symm-Clashes
1	A	3562	0	3589	38	0
2	A	24	0	10	0	0
3	A	3	0	0	1	0
4	A	19	0	26	0	0
5	A	20	0	0	1	0
6	A	5	0	0	0	0
7	A	439	0	0	9	1
All	All	4072	0	3625	40	1

The all-atom clashscore is defined as the number of clashes found per 1000 atoms (including hydrogen atoms). The all-atom clashscore for this structure is 6.

All (40) close contacts within the same asymmetric unit are listed below, sorted by their clash magnitude.

Atom-1	Atom-2	Interatomic distance (Å)	Clash overlap (Å)
1:A:232:VAL:HG11	1:A:290:PRO:HG3	1.54	0.90
1:A:302:PRO:HA	1:A:305:ARG:HG3	1.74	0.70
5:A:1206:MOO:O1	7:A:1301:HOH:O	2.08	0.69
1:A:188:ARG:NH2	7:A:1305:HOH:O	2.25	0.68
1:A:275:LEU:HD13	7:A:1536:HOH:O	1.95	0.65

Continued on next page...

Continued from previous page...

Atom-1	Atom-2	Interatomic distance (Å)	Clash overlap (Å)
1:A:275:LEU:CD1	7:A:1536:HOH:O	2.44	0.65
3:A:1202:EFK:OT1	3:A:1202:EFK:MO	1.71	0.61
1:A:1076:ARG:HD3	7:A:1332:HOH:O	2.01	0.59
1:A:102[A]:ASN:OD1	7:A:1302:HOH:O	2.17	0.58
1:A:121:GLY:O	1:A:138:ILE:HD11	2.04	0.57
1:A:1080:ARG:CB	1:A:1080:ARG:HH11	2.18	0.56
1:A:217[B]:SER:HB3	1:A:220:SER:HG	1.70	0.56
1:A:1080:ARG:HH11	1:A:1080:ARG:HB2	1.72	0.55
1:A:277:THR:HG21	1:A:288:LYS:HA	1.88	0.54
1:A:217[B]:SER:CB	1:A:251:GLU:OE1	2.56	0.53
1:A:1061:ASP:OD2	1:A:287:ARG:NH2	2.43	0.51
1:A:122:ASP:O	1:A:138:ILE:HD12	2.11	0.50
1:A:217[B]:SER:HB2	1:A:251:GLU:OE1	2.12	0.49
1:A:1080:ARG:HB2	1:A:1080:ARG:NH1	2.26	0.49
1:A:136:LEU:HB3	1:A:137:PRO:HD2	1.95	0.48
1:A:198:LEU:HD11	1:A:307:LEU:HD11	1.96	0.47
1:A:122:ASP:OD1	1:A:122:ASP:N	2.43	0.47
1:A:217[B]:SER:HB3	1:A:251:GLU:OE1	2.15	0.47
1:A:106:ALA:HB3	1:A:275:LEU:HD13	1.96	0.47
1:A:121:GLY:O	1:A:138:ILE:CD1	2.63	0.47
1:A:238:ARG:N	1:A:239:PRO:CD	2.77	0.47
1:A:107:ARG:HG3	1:A:275:LEU:HD21	1.98	0.46
1:A:126:LEU:HD12	1:A:134:LEU:HD23	1.98	0.45
1:A:152:HIS:NE2	1:A:209[A]:ASP:OD1	2.47	0.45
1:A:275:LEU:HD12	7:A:1536:HOH:O	2.15	0.44
1:A:302:PRO:HA	1:A:305:ARG:CG	2.47	0.43
1:A:288:LYS:HE3	1:A:288:LYS:HB2	1.78	0.43
1:A:235:THR:HG22	7:A:1570:HOH:O	2.18	0.43
1:A:302:PRO:HA	1:A:305:ARG:HD2	2.00	0.43
1:A:251:GLU:HA	1:A:254:TRP:CE3	2.54	0.42
1:A:53:GLN:HE21	1:A:334:LEU:HD23	1.85	0.42
1:A:1083:LYS:HB3	1:A:1083:LYS:HE2	1.75	0.42
1:A:261:ASP:HB2	7:A:1314:HOH:O	2.19	0.41
1:A:251:GLU:HA	1:A:254:TRP:CD2	2.56	0.41
1:A:1146:ALA:O	1:A:1150:ILE:HG13	2.22	0.40

All (1) symmetry-related close contacts are listed below. The label for Atom-2 includes the symmetry operator and encoded unit-cell translations to be applied.

Atom-1	Atom-2	Interatomic distance (Å)	Clash overlap (Å)
7:A:1434:HOH:O	7:A:1584:HOH:O[4_545]	2.19	0.01

5.3 Torsion angles [i](#)

5.3.1 Protein backbone [i](#)

In the following table, the Percentiles column shows the percent Ramachandran outliers of the chain as a percentile score with respect to all X-ray entries followed by that with respect to entries of similar resolution.

The Analysed column shows the number of residues for which the backbone conformation was analysed, and the total number of residues.

Mol	Chain	Analysed	Favoured	Allowed	Outliers	Percentiles
1	A	450/459 (98%)	435 (97%)	15 (3%)	0	100 100

There are no Ramachandran outliers to report.

5.3.2 Protein sidechains [i](#)

In the following table, the Percentiles column shows the percent sidechain outliers of the chain as a percentile score with respect to all X-ray entries followed by that with respect to entries of similar resolution.

The Analysed column shows the number of residues for which the sidechain conformation was analysed, and the total number of residues.

Mol	Chain	Analysed	Rotameric	Outliers	Percentiles
1	A	393/398 (99%)	391 (100%)	2 (0%)	88 86

All (2) residues with a non-rotameric sidechain are listed below:

Mol	Chain	Res	Type
1	A	122	ASP
1	A	296	SER

Sometimes sidechains can be flipped to improve hydrogen bonding and reduce clashes. All (1) such sidechains are listed below:

Mol	Chain	Res	Type
1	A	53	GLN

5.3.3 RNA [i](#)

There are no RNA molecules in this entry.

5.4 Non-standard residues in protein, DNA, RNA chains [i](#)

There are no non-standard protein/DNA/RNA residues in this entry.

5.5 Carbohydrates [i](#)

There are no monosaccharides in this entry.

5.6 Ligand geometry [i](#)

8 ligands are modelled in this entry.

In the following table, the Counts columns list the number of bonds (or angles) for which Mogul statistics could be retrieved, the number of bonds (or angles) that are observed in the model and the number of bonds (or angles) that are defined in the Chemical Component Dictionary. The Link column lists molecule types, if any, to which the group is linked. The Z score for a bond length (or angle) is the number of standard deviations the observed value is removed from the expected value. A bond length (or angle) with $|Z| > 2$ is considered an outlier worth inspection. RMSZ is the root-mean-square of all Z scores of the bond lengths (or angles).

Mol	Type	Chain	Res	Link	Bond lengths			Bond angles		
					Counts	RMSZ	# Z > 2	Counts	RMSZ	# Z > 2
5	MOO	A	1207	-	2,4,4	3.74	2 (100%)	-		
5	MOO	A	1205	-	2,4,4	4.51	2 (100%)	-		
3	EFK	A	1202	1,2	0,2,2	-	-	-		
4	B3P	A	1203	-	18,18,18	1.26	2 (11%)	23,23,23	2.02	4 (17%)
5	MOO	A	1206	-	2,4,4	4.66	2 (100%)	-		
5	MOO	A	1204	-	2,4,4	4.94	2 (100%)	-		
6	PO4	A	1208	-	4,4,4	0.77	0	6,6,6	1.41	1 (16%)
2	MTE	A	1201	3	19,26,26	2.11	9 (47%)	20,40,40	2.51	8 (40%)

In the following table, the Chirals column lists the number of chiral outliers, the number of chiral centers analysed, the number of these observed in the model and the number defined in the Chemical Component Dictionary. Similar counts are reported in the Torsion and Rings columns. '-' means no outliers of that kind were identified.

Mol	Type	Chain	Res	Link	Chirals	Torsions	Rings
2	MTE	A	1201	3	-	0/6/34/34	0/3/3/3
4	B3P	A	1203	-	-	1/28/28/28	-

All (19) bond length outliers are listed below:

Mol	Chain	Res	Type	Atoms	Z	Observed(Å)	Ideal(Å)
5	A	1204	MOO	O2-MO	5.13	1.90	1.73
5	A	1206	MOO	O1-MO	5.01	1.89	1.73
5	A	1204	MOO	O1-MO	4.74	1.88	1.73
2	A	1201	MTE	C7-C6	4.73	1.57	1.53
5	A	1207	MOO	O1-MO	4.59	1.88	1.73
5	A	1205	MOO	O1-MO	4.56	1.88	1.73
5	A	1205	MOO	O2-MO	4.45	1.87	1.73
5	A	1206	MOO	O2-MO	4.27	1.87	1.73
4	A	1203	B3P	C11-C8	3.19	1.57	1.53
2	A	1201	MTE	O3'-C7	2.89	1.48	1.43
2	A	1201	MTE	C2-N3	2.87	1.40	1.35
2	A	1201	MTE	C9-C10	2.78	1.46	1.41
2	A	1201	MTE	C4-N3	2.64	1.37	1.33
2	A	1201	MTE	C2-N2	2.64	1.39	1.33
5	A	1207	MOO	O2-MO	2.64	1.82	1.73
2	A	1201	MTE	C10-N1	2.52	1.39	1.34
2	A	1201	MTE	C7-N8	2.42	1.49	1.44
4	A	1203	B3P	C3-N1	2.06	1.49	1.46
2	A	1201	MTE	C9-N5	2.04	1.42	1.37

All (13) bond angle outliers are listed below:

Mol	Chain	Res	Type	Atoms	Z	Observed(°)	Ideal(°)
2	A	1201	MTE	C7-C6-N5	7.36	115.10	107.87
4	A	1203	B3P	C7-C4-C6	-4.73	99.66	110.02
4	A	1203	B3P	O5-C6-C4	-4.66	102.20	111.68
2	A	1201	MTE	C4-C9-N5	3.81	124.00	118.57
4	A	1203	B3P	O3-C11-C8	-3.55	104.45	111.68
2	A	1201	MTE	O3'-C7-N8	-3.19	105.71	108.61
2	A	1201	MTE	C10-N8-C7	-3.13	117.47	123.62
6	A	1208	PO4	O3-P-O2	2.99	117.20	107.91
2	A	1201	MTE	O3P-P-O2P	2.87	118.57	107.80
2	A	1201	MTE	C2-N1-C10	2.36	120.19	114.59
2	A	1201	MTE	C2-N3-C4	2.18	118.99	115.96
4	A	1203	B3P	C3-N1-C4	2.15	119.31	116.17
2	A	1201	MTE	N2-C2-N1	2.06	120.31	117.22

There are no chirality outliers.

All (1) torsion outliers are listed below:

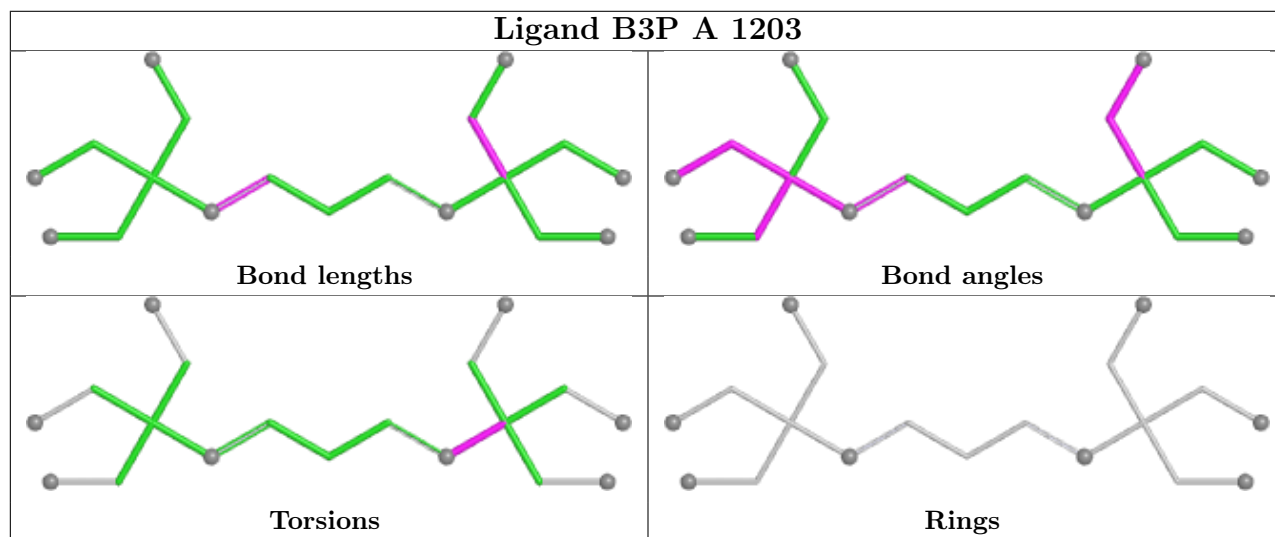
Mol	Chain	Res	Type	Atoms
4	A	1203	B3P	C9-C8-N2-C2

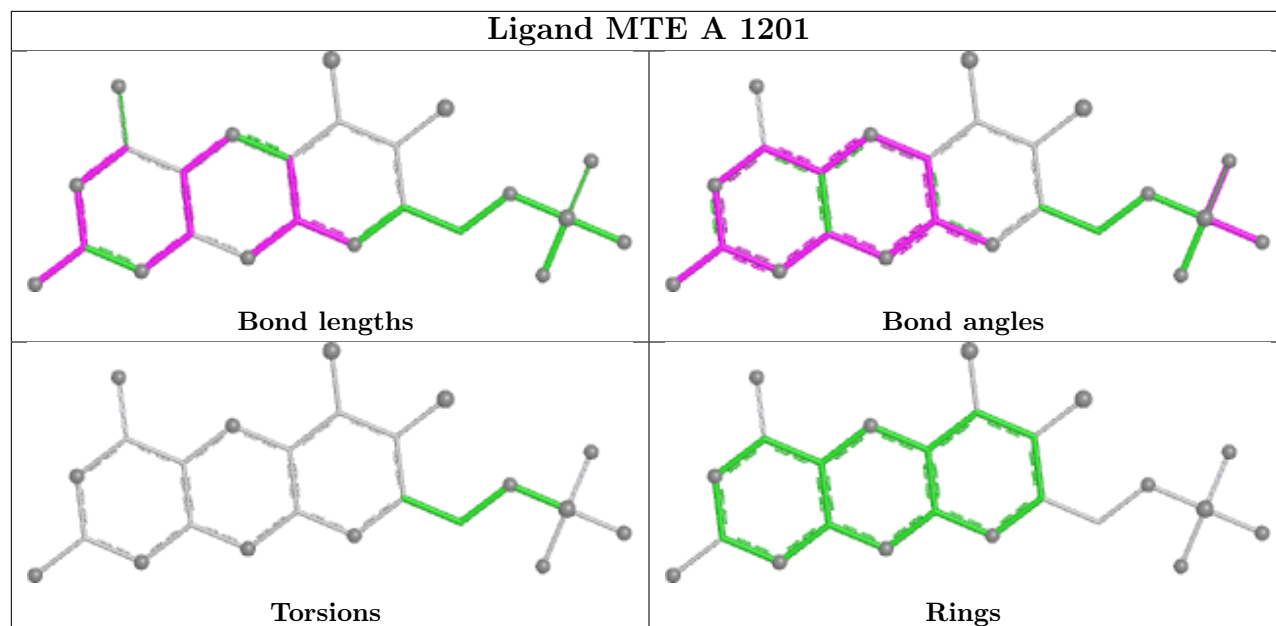
There are no ring outliers.

2 monomers are involved in 2 short contacts:

Mol	Chain	Res	Type	Clashes	Symm-Clashes
3	A	1202	EFK	1	0
5	A	1206	MOO	1	0

The following is a two-dimensional graphical depiction of Mogul quality analysis of bond lengths, bond angles, torsion angles, and ring geometry for all instances of the Ligand of Interest. In addition, ligands with molecular weight > 250 and outliers as shown on the validation Tables will also be included. For torsion angles, if less than 5% of the Mogul distribution of torsion angles is within 10 degrees of the torsion angle in question, then that torsion angle is considered an outlier. Any bond that is central to one or more torsion angles identified as an outlier by Mogul will be highlighted in the graph. For rings, the root-mean-square deviation (RMSD) between the ring in question and similar rings identified by Mogul is calculated over all ring torsion angles. If the average RMSD is greater than 60 degrees and the minimal RMSD between the ring in question and any Mogul-identified rings is also greater than 60 degrees, then that ring is considered an outlier. The outliers are highlighted in purple. The color gray indicates Mogul did not find sufficient equivalents in the CSD to analyse the geometry.





5.7 Other polymers [i](#)

There are no such residues in this entry.

5.8 Polymer linkage issues [i](#)

There are no chain breaks in this entry.

6 Fit of model and data

6.1 Protein, DNA and RNA chains

In the following table, the column labelled ‘#RSRZ> 2’ contains the number (and percentage) of RSRZ outliers, followed by percent RSRZ outliers for the chain as percentile scores relative to all X-ray entries and entries of similar resolution. The OWAB column contains the minimum, median, 95th percentile and maximum values of the occupancy-weighted average B-factor per residue. The column labelled ‘Q< 0.9’ lists the number of (and percentage) of residues with an average occupancy less than 0.9.

Mol	Chain	Analysed	<RSRZ>	#RSRZ>2	OWAB(Å ²)	Q<0.9
1	A	444/459 (96%)	0.20	30 (6%) 17 17	12, 23, 61, 126	0

All (30) RSRZ outliers are listed below:

Mol	Chain	Res	Type	RSRZ
1	A	307	LEU	7.5
1	A	287	ARG	6.8
1	A	309	GLY	5.9
1	A	310	LYS	5.7
1	A	301	ASP	5.2
1	A	297	TYR	5.0
1	A	300	CYS	5.0
1	A	303	SER	4.7
1	A	273[A]	CYS	4.6
1	A	274	ILE	4.0
1	A	302	PRO	4.0
1	A	306	LYS	3.7
1	A	288	LYS	3.7
1	A	248	VAL	3.5
1	A	249	TYR	3.3
1	A	305	ARG	3.3
1	A	294	LEU	3.2
1	A	308	TYR	3.2
1	A	292	GLU	3.2
1	A	299	GLN	3.1
1	A	290	PRO	3.0
1	A	313	LEU	2.7
1	A	226	SER	2.7
1	A	312	PRO	2.5
1	A	293	THR	2.5
1	A	229	GLU	2.5
1	A	314	PHE	2.4

Continued on next page...

Continued from previous page...

Mol	Chain	Res	Type	RSRZ
1	A	291	LEU	2.4
1	A	221	LEU	2.2
1	A	276	THR	2.0

6.2 Non-standard residues in protein, DNA, RNA chains [i](#)

There are no non-standard protein/DNA/RNA residues in this entry.

6.3 Carbohydrates [i](#)

There are no monosaccharides in this entry.

6.4 Ligands [i](#)

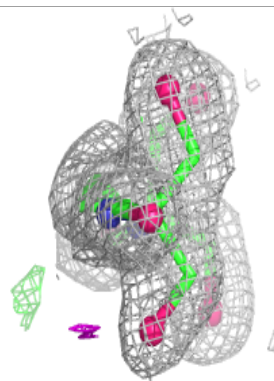
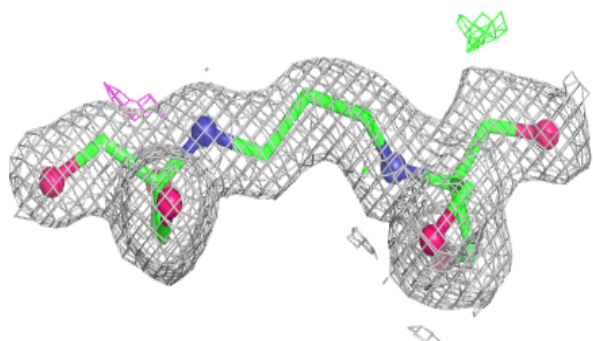
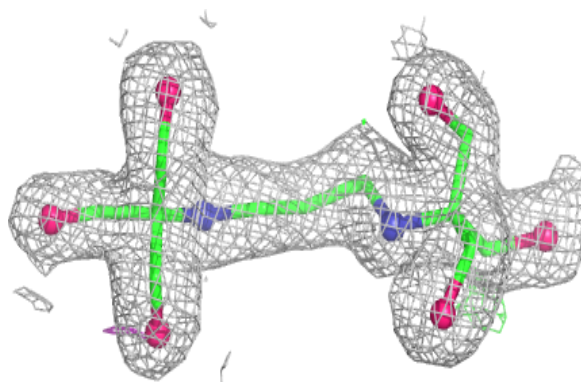
In the following table, the Atoms column lists the number of modelled atoms in the group and the number defined in the chemical component dictionary. The B-factors column lists the minimum, median, 95th percentile and maximum values of B factors of atoms in the group. The column labelled 'Q< 0.9' lists the number of atoms with occupancy less than 0.9.

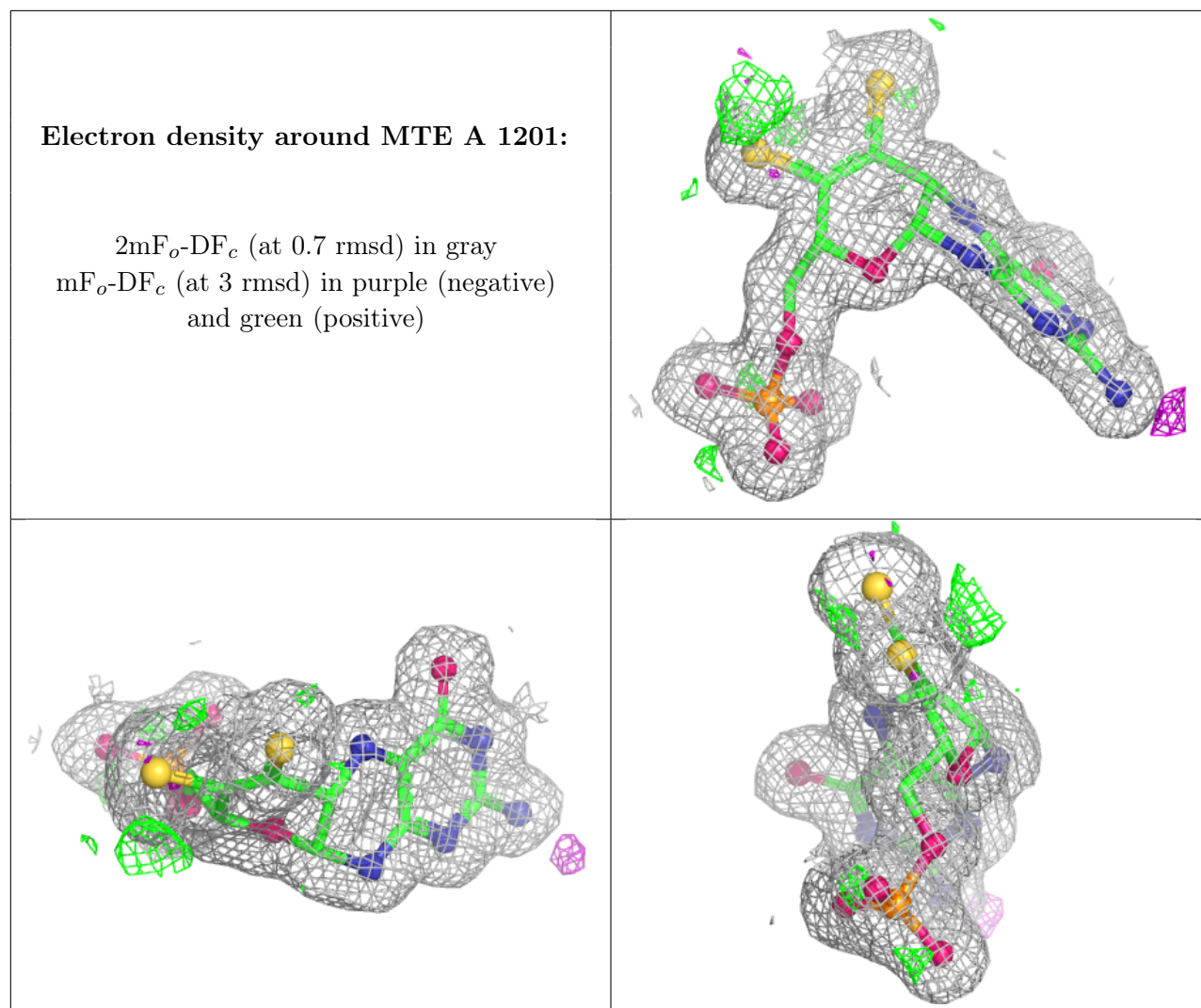
Mol	Type	Chain	Res	Atoms	RSCC	RSR	B-factors(Å ²)	Q<0.9
4	B3P	A	1203	19/19	0.95	0.11	21,25,28,33	0
5	MOO	A	1206	5/5	0.95	0.11	47,50,61,67	5
6	PO4	A	1208	5/5	0.95	0.12	47,49,64,73	0
5	MOO	A	1204	5/5	0.96	0.11	38,41,50,54	5
2	MTE	A	1201	24/24	0.98	0.07	12,17,22,32	0
3	EFK	A	1202	3/3	0.99	0.07	27,27,29,29	3
5	MOO	A	1207	5/5	0.99	0.10	21,27,30,32	5
5	MOO	A	1205	5/5	0.99	0.08	31,32,34,35	5

The following is a graphical depiction of the model fit to experimental electron density of all instances of the Ligand of Interest. In addition, ligands with molecular weight > 250 and outliers as shown on the geometry validation Tables will also be included. Each fit is shown from different orientation to approximate a three-dimensional view.

Electron density around B3P A 1203:

$2mF_o-DF_c$ (at 0.7 rmsd) in gray
 mF_o-DF_c (at 3 rmsd) in purple (negative)
and green (positive)





6.5 Other polymers [i](#)

There are no such residues in this entry.