



# Full wwPDB X-ray Structure Validation Report ⓘ

Mar 9, 2026 – 05:46 PM UTC

PDB ID : 6FS2 / pdb\_00006fs2  
Title : MCL1 in complex with indole acid ligand  
Authors : Hargreaves, D.  
Deposited on : 2018-02-18  
Resolution : 2.55 Å(reported)

This is a Full wwPDB X-ray Structure Validation Report for a publicly released PDB entry.

We welcome your comments at [validation@mail.wwpdb.org](mailto:validation@mail.wwpdb.org)

A user guide is available at

<https://www.wwpdb.org/validation/2017/XrayValidationReportHelp>

with specific help available everywhere you see the ⓘ symbol.

The types of validation reports are described at

<http://www.wwpdb.org/validation/2017/FAQs#types>.

---

The following versions of software and data (see [references ⓘ](#)) were used in the production of this report:

MolProbity : 4-5-2 with Phenix2.0  
Mogul : 2022.3.0, CSD as543be (2022)  
Xtriage (Phenix) : 2.0  
EDS : 3.0  
Buster-report : wwPDB partial adaption of 1.1.7 (2018)  
Percentile statistics : 20250101.v01 (using entries in the PDB archive January 1st 2025)  
CCP4 : 9.0.010 (Gargrove)  
Density-Fitness : 1.0.12  
Ideal geometry (proteins) : Engh & Huber (2001)  
Ideal geometry (DNA, RNA) : Parkinson et al. (1996)  
Validation Pipeline (wwPDB-VP) : 2.49

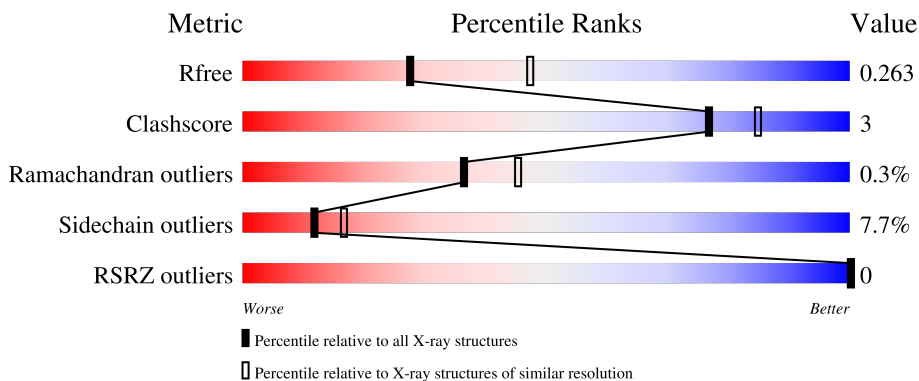
# 1 Overall quality at a glance

The following experimental techniques were used to determine the structure:

*X-RAY DIFFRACTION*



The reported resolution of this entry is 2.55 Å.

Percentile scores (ranging between 0-100) for global validation metrics of the entry are shown in the following graphic. The table shows the number of entries on which the scores are based.



Metric	Whole archive (#Entries)	Similar resolution (#Entries, resolution range(Å))
$R_{free}$	180053	1091 (2.54-2.54)
Clashscore	190562	1120 (2.54-2.54)
Ramachandran outliers	187476	1106 (2.54-2.54)
Sidechain outliers	187428	1106 (2.54-2.54)
RSRZ outliers	180081	1091 (2.54-2.54)

The table below summarises the geometric issues observed across the polymeric chains and their fit to the electron density. The red, orange, yellow and green segments of the lower bar indicate the fraction of residues that contain outliers for  $\geq 3$ , 2, 1 and 0 types of geometric quality criteria respectively. A grey segment represents the fraction of residues that are not modelled. The numeric value for each fraction is indicated below the corresponding segment, with a dot representing fractions  $\leq 5\%$ . The upper red bar (where present) indicates the fraction of residues that have poor fit to the electron density. The numeric value is given above the bar.

Mol	Chain	Length	Quality of chain
1	A	154	 80% 18% ..
1	B	154	 82% 16% .

## 2 Entry composition

There are 3 unique types of molecules in this entry. The entry contains 2611 atoms, of which 0 are hydrogens and 0 are deuteriums.

In the tables below, the ZeroOcc column contains the number of atoms modelled with zero occupancy, the AltConf column contains the number of residues with at least one atom in alternate conformation and the Trace column contains the number of residues modelled with at most 2 atoms.

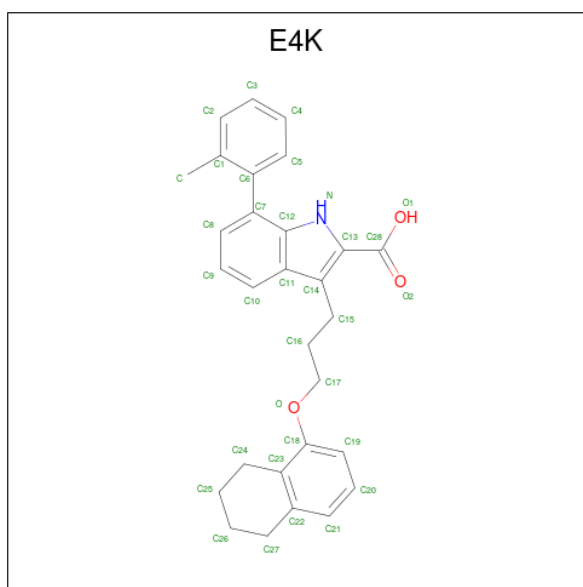
- Molecule 1 is a protein called Induced myeloid leukemia cell differentiation protein Mcl-1.

Mol	Chain	Residues	Atoms					ZeroOcc	AltConf	Trace
			Total	C	N	O	S			
1	A	152	1221	766	223	229	3	52	0	0
1	B	151	1218	764	223	228	3	45	1	0

There are 18 discrepancies between the modelled and reference sequences:

Chain	Residue	Modelled	Actual	Comment	Reference
A	172	ASP	-	expression tag	UNP Q07820
A	173	ASP	-	expression tag	UNP Q07820
A	193	SER	ALA	conflict	UNP Q07820
A	199	LEU	MET	conflict	UNP Q07820
A	201	GLU	ARG	conflict	UNP Q07820
A	202	ALA	SER	conflict	UNP Q07820
A	205	ALA	THR	conflict	UNP Q07820
A	206	GLY	SER	conflict	UNP Q07820
A	208	ARG	LYS	conflict	UNP Q07820
B	172	ASP	-	expression tag	UNP Q07820
B	173	ASP	-	expression tag	UNP Q07820
B	193	SER	ALA	conflict	UNP Q07820
B	199	LEU	MET	conflict	UNP Q07820
B	201	GLU	ARG	conflict	UNP Q07820
B	202	ALA	SER	conflict	UNP Q07820
B	205	ALA	THR	conflict	UNP Q07820
B	206	GLY	SER	conflict	UNP Q07820
B	208	ARG	LYS	conflict	UNP Q07820

- Molecule 2 is 7-(2-methylphenyl)-3-[3-(5,6,7,8-tetrahydronaphthalen-1-yloxy)propyl]-1 {H}-indole-2-carboxylic acid (CCD ID: E4K) (formula: C<sub>29</sub>H<sub>29</sub>NO<sub>3</sub>).



Mol	Chain	Residues	Atoms				ZeroOcc	AltConf
			Total	C	N	O		
2	A	1	33	29	1	3	0	0
2	A	1	33	29	1	3	0	0
2	B	1	33	29	1	3	0	0
2	B	1	33	29	1	3	0	0


- Molecule 3 is water.

Mol	Chain	Residues	Atoms		ZeroOcc	AltConf
			Total	O		
3	A	19	19	19	0	0
3	B	21	21	21	0	0

### 3 Residue-property plots


These plots are drawn for all protein, RNA, DNA and oligosaccharide chains in the entry. The first graphic for a chain summarises the proportions of the various outlier classes displayed in the second graphic. The second graphic shows the sequence view annotated by issues in geometry and electron density. Residues are color-coded according to the number of geometric quality criteria for which they contain at least one outlier: green = 0, yellow = 1, orange = 2 and red = 3 or more. A red dot above a residue indicates a poor fit to the electron density ( $RSRZ > 2$ ). Stretches of 2 or more consecutive residues without any outlier are shown as a green connector. Residues present in the sample, but not in the model, are shown in grey.

- Molecule 1: Induced myeloid leukemia cell differentiation protein Mcl-1

Chain A: 



- Molecule 1: Induced myeloid leukemia cell differentiation protein Mcl-1

Chain B: 



## 4 Data and refinement statistics i

Property	Value	Source
Space group	P 1	Depositor
Cell constants a, b, c, $\alpha$ , $\beta$ , $\gamma$	46.71Å 46.71Å 47.49Å 74.74° 74.74° 61.83°	Depositor
Resolution (Å)	45.20 – 2.55 45.20 – 2.55	Depositor EDS
% Data completeness (in resolution range)	97.5 (45.20-2.55) 97.4 (45.20-2.55)	Depositor EDS
$R_{merge}$	(Not available)	Depositor
$R_{sym}$	(Not available)	Depositor
$\langle I/\sigma(I) \rangle$ <sup>1</sup>	1.70 (at 2.54Å)	Xtrriage
Refinement program	BUSTER 2.11.6	Depositor
R, $R_{free}$	0.186 , 0.254 0.194 , 0.263	Depositor DCC
$R_{free}$ test set	947 reflections (8.83%)	wwPDB-VP
Wilson B-factor (Å <sup>2</sup> )	35.6	Xtrriage
Anisotropy	0.114	Xtrriage
Bulk solvent $k_{sol}$ (e/Å <sup>3</sup> ), $B_{sol}$ (Å <sup>2</sup> )	0.32 , 18.7	EDS
L-test for twinning <sup>2</sup>	$\langle  L  \rangle = 0.50$ , $\langle L^2 \rangle = 0.33$	Xtrriage
Estimated twinning fraction	0.457 for -k,-h,-l	Xtrriage
$F_o, F_c$ correlation	0.96	EDS
Total number of atoms	2611	wwPDB-VP
Average B, all atoms (Å <sup>2</sup> )	40.0	wwPDB-VP

Xtrriage's analysis on translational NCS is as follows: *The largest off-origin peak in the Patterson function is 9.35% of the height of the origin peak. No significant pseudotranslation is detected.*

<sup>1</sup>Intensities estimated from amplitudes.

<sup>2</sup>Theoretical values of  $\langle |L| \rangle$ ,  $\langle L^2 \rangle$  for acentric reflections are 0.5, 0.333 respectively for untwinned datasets, and 0.375, 0.2 for perfectly twinned datasets.

## 5 Model quality i

### 5.1 Standard geometry i

Bond lengths and bond angles in the following residue types are not validated in this section: E4K

The Z score for a bond length (or angle) is the number of standard deviations the observed value is removed from the expected value. A bond length (or angle) with  $|Z| > 5$  is considered an outlier worth inspection. RMSZ is the root-mean-square of all Z scores of the bond lengths (or angles).

Mol	Chain	Bond lengths		Bond angles	
		RMSZ	# Z  >5	RMSZ	# Z  >5
1	A	0.92	0/1240	1.57	14/1667 (0.8%)
1	B	0.93	0/1237	1.53	6/1663 (0.4%)
All	All	0.93	0/2477	1.55	20/3330 (0.6%)

There are no bond length outliers.

All (20) bond angle outliers are listed below:

Mol	Chain	Res	Type	Atoms	Z	Observed(°)	Ideal(°)
1	B	262	GLY	CA-C-N	6.57	129.08	120.28
1	B	262	GLY	C-N-CA	6.57	129.08	120.28
1	B	292	GLU	CA-C-N	5.69	127.90	120.28
1	B	292	GLU	C-N-CA	5.69	127.90	120.28
1	A	174	LEU	CA-C-N	5.61	132.26	121.54
1	A	174	LEU	C-N-CA	5.61	132.26	121.54
1	A	239	ASN	CA-C-N	5.31	127.39	120.28
1	A	239	ASN	C-N-CA	5.31	127.39	120.28
1	A	322	GLU	N-CA-C	5.09	116.91	111.36
1	A	262	GLY	CA-C-N	5.09	127.06	120.44
1	A	262	GLY	C-N-CA	5.09	127.06	120.44
1	A	292	GLU	CA-C-N	5.07	127.78	120.38
1	A	292	GLU	C-N-CA	5.07	127.78	120.38
1	A	195	ASP	CA-CB-CG	5.06	117.66	112.60
1	A	190	ALA	CA-C-N	5.05	127.31	120.44
1	A	190	ALA	C-N-CA	5.05	127.31	120.44
1	A	273	PHE	CA-C-N	5.04	126.91	120.56
1	A	273	PHE	C-N-CA	5.04	126.91	120.56
1	B	212	THR	CA-C-N	5.04	127.28	120.38
1	B	212	THR	C-N-CA	5.04	127.28	120.38

There are no chirality outliers.

There are no planarity outliers.

## 5.2 Too-close contacts

In the following table, the Non-H and H(model) columns list the number of non-hydrogen atoms and hydrogen atoms in the chain respectively. The H(added) column lists the number of hydrogen atoms added and optimized by MolProbity. The Clashes column lists the number of clashes within the asymmetric unit, whereas Symm-Clashes lists symmetry-related clashes.

Mol	Chain	Non-H	H(model)	H(added)	Clashes	Symm-Clashes
1	A	1221	0	1216	8	0
1	B	1218	0	1214	6	0
2	A	66	0	0	0	0
2	B	66	0	0	0	0
3	A	19	0	0	0	0
3	B	21	0	0	0	0
All	All	2611	0	2430	14	0

The all-atom clashscore is defined as the number of clashes found per 1000 atoms (including hydrogen atoms). The all-atom clashscore for this structure is 3.

All (14) close contacts within the same asymmetric unit are listed below, sorted by their clash magnitude.

Atom-1	Atom-2	Interatomic distance (Å)	Clash overlap (Å)
1:A:216:VAL:HG23	1:A:265:VAL:HG21	1.64	0.78
1:B:184:ARG:HG3	1:B:199:LEU:HD13	1.82	0.62
1:A:216:VAL:O	1:A:220:VAL:HG23	2.10	0.52
1:A:213:LEU:HD21	1:A:268:ILE:HG21	1.93	0.50
1:B:199:LEU:HD22	1:B:210:LEU:HD22	1.96	0.47
1:B:303:ARG:O	1:B:307:VAL:HG23	2.13	0.47
1:B:184:ARG:O	1:B:188:GLU:HG2	2.15	0.46
1:A:247:SER:HA	1:A:250:MET:HE3	1.99	0.45
1:B:213:LEU:HD21	1:B:268:ILE:HG21	1.98	0.45
1:A:309:GLN:O	1:A:314:GLY:HA3	2.17	0.44
1:A:243:VAL:HG21	1:A:286:CYS:HB3	1.99	0.43
1:B:299:VAL:O	1:B:303:ARG:HB2	2.20	0.42
1:A:194:LYS:H	1:A:194:LYS:HG2	1.59	0.41
1:A:303:ARG:O	1:A:307:VAL:HG23	2.21	0.40

There are no symmetry-related clashes.

## 5.3 Torsion angles [i](#)

### 5.3.1 Protein backbone [i](#)

In the following table, the Percentiles column shows the percent Ramachandran outliers of the chain as a percentile score with respect to all X-ray entries followed by that with respect to entries of similar resolution.

The Analysed column shows the number of residues for which the backbone conformation was analysed, and the total number of residues.

Mol	Chain	Analysed	Favoured	Allowed	Outliers	Percentiles	
1	A	148/154 (96%)	144 (97%)	3 (2%)	1 (1%)	18	25
1	B	148/154 (96%)	140 (95%)	8 (5%)	0	100	100
All	All	296/308 (96%)	284 (96%)	11 (4%)	1 (0%)	36	45

All (1) Ramachandran outliers are listed below:

Mol	Chain	Res	Type
1	A	175	TYR

### 5.3.2 Protein sidechains [i](#)

In the following table, the Percentiles column shows the percent sidechain outliers of the chain as a percentile score with respect to all X-ray entries followed by that with respect to entries of similar resolution.

The Analysed column shows the number of residues for which the sidechain conformation was analysed, and the total number of residues.

Mol	Chain	Analysed	Rotameric	Outliers	Percentiles	
1	A	131/133 (98%)	123 (94%)	8 (6%)	17	25
1	B	131/133 (98%)	119 (91%)	12 (9%)	8	10
All	All	262/266 (98%)	242 (92%)	20 (8%)	12	17

All (20) residues with a non-rotameric sidechain are listed below:

Mol	Chain	Res	Type
1	A	174	LEU
1	A	194	LYS
1	A	238	LYS
1	A	254	PHE
1	A	256	ASP

*Continued on next page...*

*Continued from previous page...*

Mol	Chain	Res	Type
1	A	276	LYS
1	A	280	THR
1	A	293	SER
1	B	173	ASP
1	B	194	LYS
1	B	201	GLU
1	B	229	GLN
1	B	234	LYS
1	B	247	SER
1	B	249	VAL
1	B	254	PHE
1	B	256	ASP
1	B	267	LEU
1	B	276	LYS
1	B	285	SER

Sometimes sidechains can be flipped to improve hydrogen bonding and reduce clashes. All (2) such sidechains are listed below:

Mol	Chain	Res	Type
1	B	223	ASN
1	B	320	HIS

### 5.3.3 RNA [i](#)

There are no RNA molecules in this entry.

## 5.4 Non-standard residues in protein, DNA, RNA chains [i](#)

There are no non-standard protein/DNA/RNA residues in this entry.

## 5.5 Carbohydrates [i](#)

There are no oligosaccharides in this entry.

## 5.6 Ligand geometry [i](#)

4 ligands are modelled in this entry.

In the following table, the Counts columns list the number of bonds (or angles) for which Mogul statistics could be retrieved, the number of bonds (or angles) that are observed in the model and the number of bonds (or angles) that are defined in the Chemical Component Dictionary. The Link column lists molecule types, if any, to which the group is linked. The Z score for a bond length (or angle) is the number of standard deviations the observed value is removed from the expected value. A bond length (or angle) with  $|Z| > 2$  is considered an outlier worth inspection. RMSZ is the root-mean-square of all Z scores of the bond lengths (or angles).

Mol	Type	Chain	Res	Link	Bond lengths			Bond angles		
					Counts	RMSZ	# Z  > 2	Counts	RMSZ	# Z  > 2
2	E4K	B	401	-	37,37,37	0.76	2 (5%)	50,52,52	0.83	2 (4%)
2	E4K	A	402	-	37,37,37	0.85	2 (5%)	50,52,52	0.53	1 (2%)
2	E4K	B	402	-	37,37,37	0.79	2 (5%)	50,52,52	0.63	1 (2%)
2	E4K	A	401	-	37,37,37	0.76	2 (5%)	50,52,52	0.72	2 (4%)

In the following table, the Chirals column lists the number of chiral outliers, the number of chiral centers analysed, the number of these observed in the model and the number defined in the Chemical Component Dictionary. Similar counts are reported in the Torsion and Rings columns. '-' means no outliers of that kind were identified.

Mol	Type	Chain	Res	Link	Chirals	Torsions	Rings
2	E4K	B	401	-	-	0/15/22/22	0/5/5/5
2	E4K	A	402	-	-	1/15/22/22	0/5/5/5
2	E4K	B	402	-	-	0/15/22/22	0/5/5/5
2	E4K	A	401	-	-	0/15/22/22	0/5/5/5

All (8) bond length outliers are listed below:

Mol	Chain	Res	Type	Atoms	Z	Observed(Å)	Ideal(Å)
2	A	402	E4K	O2-C28	3.79	1.31	1.22
2	A	401	E4K	O2-C28	3.67	1.31	1.22
2	B	401	E4K	O2-C28	3.20	1.30	1.22
2	B	402	E4K	O1-C28	-3.15	1.22	1.30
2	B	402	E4K	O2-C28	3.02	1.30	1.22
2	A	402	E4K	O1-C28	-3.00	1.22	1.30
2	B	401	E4K	O1-C28	-2.67	1.23	1.30
2	A	401	E4K	O1-C28	-2.37	1.24	1.30

All (6) bond angle outliers are listed below:

Mol	Chain	Res	Type	Atoms	Z	Observed(°)	Ideal(°)
2	B	401	E4K	O2-C28-C13	-3.31	114.44	120.20
2	B	401	E4K	O1-C28-C13	3.16	121.74	116.73

*Continued on next page...*

*Continued from previous page...*

Mol	Chain	Res	Type	Atoms	Z	Observed(°)	Ideal(°)
2	A	401	E4K	O1-C28-C13	3.15	121.73	116.73
2	A	401	E4K	O2-C28-C13	-2.74	115.43	120.20
2	B	402	E4K	O1-C28-C13	2.67	120.97	116.73
2	A	402	E4K	O1-C28-C13	2.01	119.92	116.73

There are no chirality outliers.

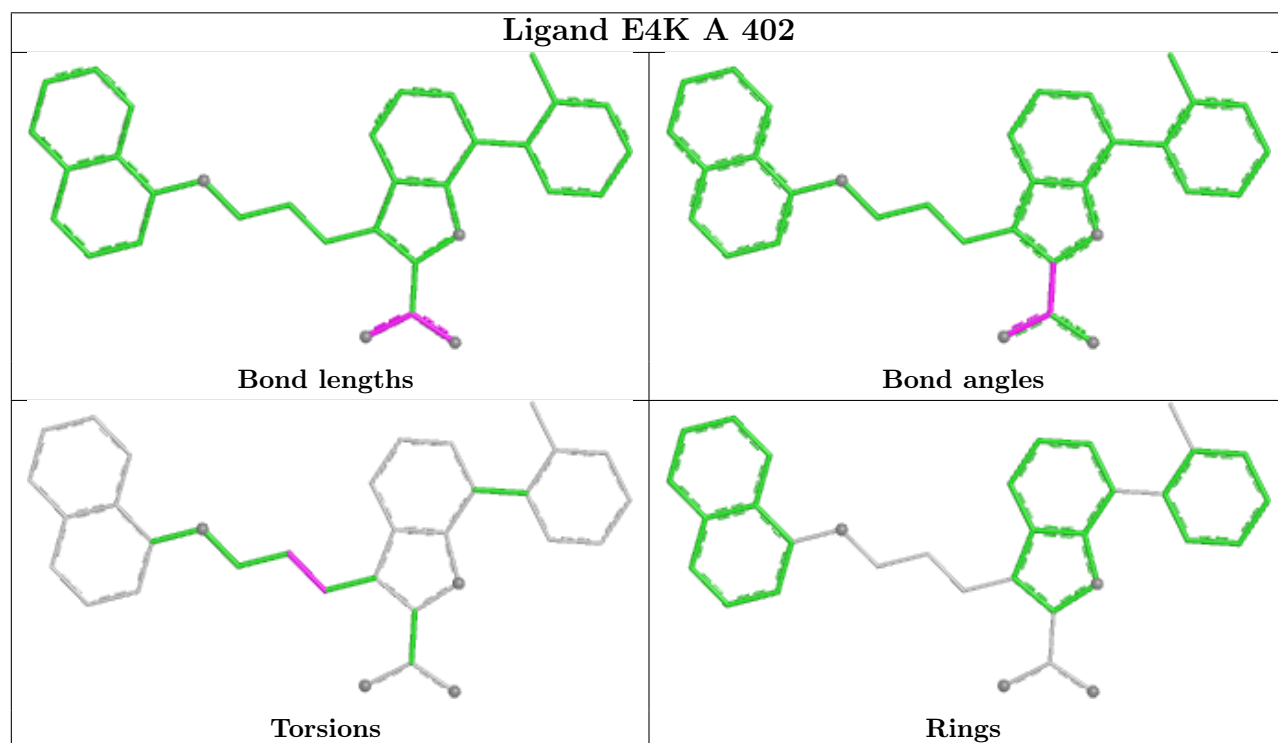
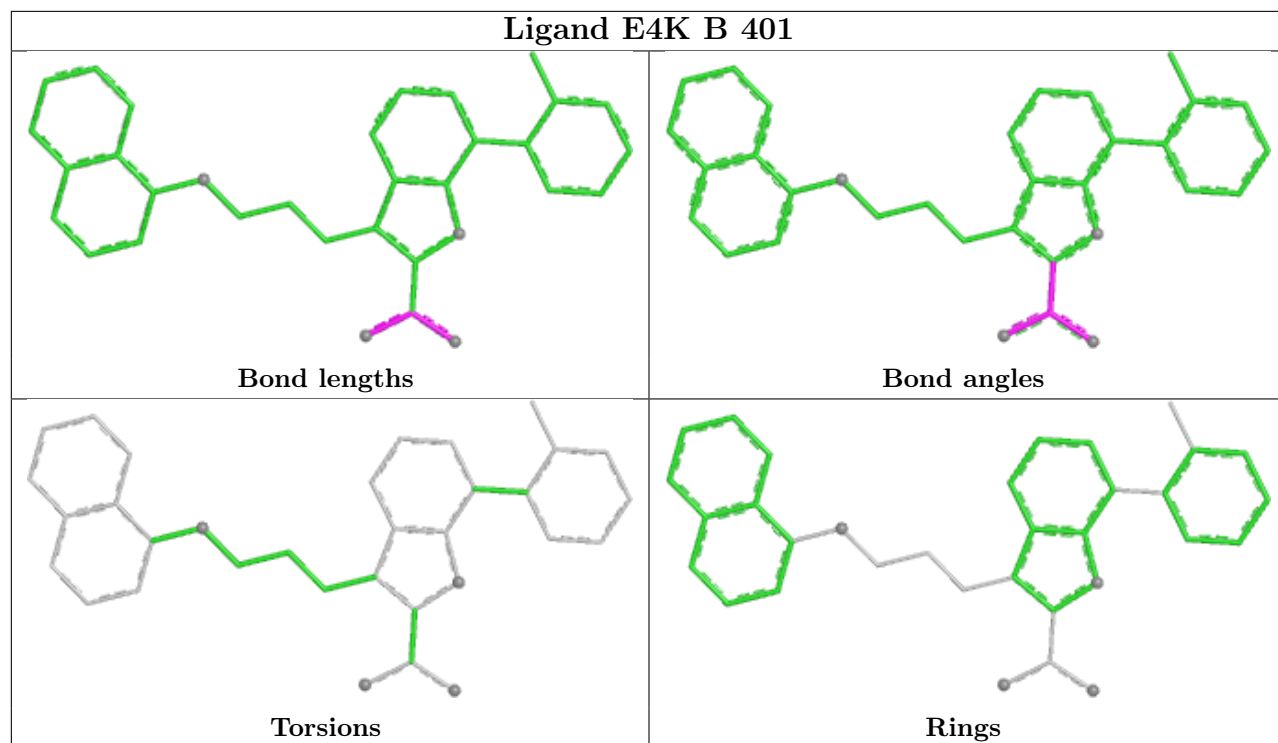
All (1) torsion outliers are listed below:

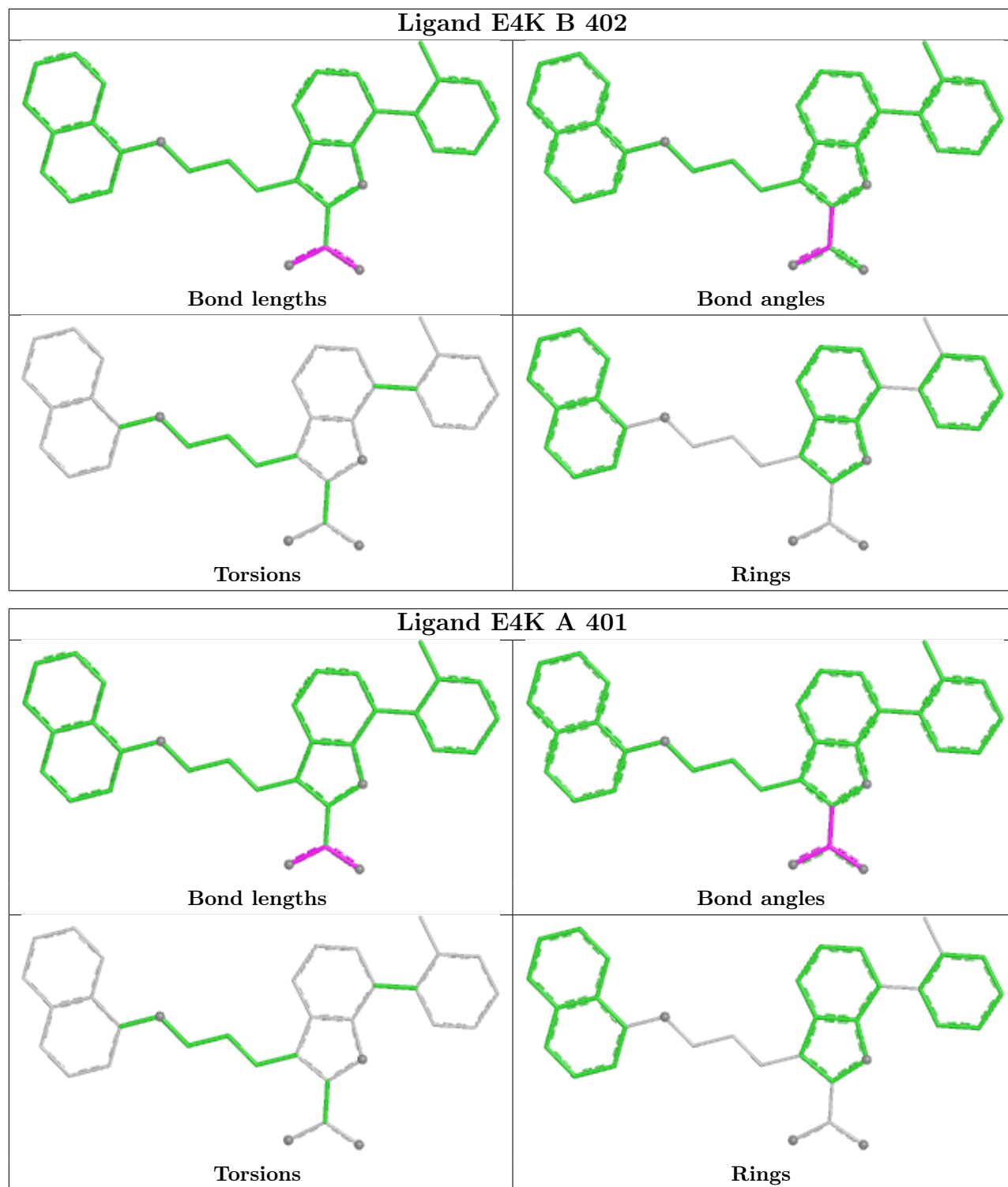
Mol	Chain	Res	Type	Atoms
2	A	402	E4K	C14-C15-C16-C17

There are no ring outliers.

No monomer is involved in short contacts.

The following is a two-dimensional graphical depiction of Mogul quality analysis of bond lengths, bond angles, torsion angles, and ring geometry for all instances of the Ligand of Interest. In addition, ligands with molecular weight > 250 and outliers as shown on the validation Tables will also be included. For torsion angles, if less than 5% of the Mogul distribution of torsion angles is within 10 degrees of the torsion angle in question, then that torsion angle is considered an outlier. Any bond that is central to one or more torsion angles identified as an outlier by Mogul will be highlighted in the graph. For rings, the root-mean-square deviation (RMSD) between the ring in question and similar rings identified by Mogul is calculated over all ring torsion angles. If the average RMSD is greater than 60 degrees and the minimal RMSD between the ring in question and any Mogul-identified rings is also greater than 60 degrees, then that ring is considered an outlier. The outliers are highlighted in purple. The color gray indicates Mogul did not find sufficient equivalents in the CSD to analyse the geometry.





## 5.7 Other polymers [\(i\)](#)

There are no such residues in this entry.

## 5.8 Polymer linkage issues

There are no chain breaks in this entry.

## 6 Fit of model and data [i](#)

### 6.1 Protein, DNA and RNA chains [i](#)

In the following table, the column labelled ‘#RSRZ > 2’ contains the number (and percentage) of RSRZ outliers, followed by percent RSRZ outliers for the chain as percentile scores relative to all X-ray entries and entries of similar resolution. The OWAB column contains the minimum, median, 95<sup>th</sup> percentile and maximum values of the occupancy-weighted average B-factor per residue. The column labelled ‘Q < 0.9’ lists the number of (and percentage) of residues with an average occupancy less than 0.9.

Mol	Chain	Analysed	<RSRZ>	#RSRZ>2	OWAB(Å <sup>2</sup> )	Q<0.9
1	A	152/154 (98%)	-1.41	0 <a href="#">100</a> <a href="#">100</a>	18, 36, 68, 103	14 (9%)
1	B	151/154 (98%)	-1.36	0 <a href="#">100</a> <a href="#">100</a>	18, 36, 68, 100	14 (9%)
All	All	303/308 (98%)	-1.38	0 <a href="#">100</a> <a href="#">100</a>	18, 36, 68, 103	28 (9%)

There are no RSRZ outliers to report.

### 6.2 Non-standard residues in protein, DNA, RNA chains [i](#)

There are no non-standard protein/DNA/RNA residues in this entry.

### 6.3 Carbohydrates [i](#)

There are no oligosaccharides in this entry.

### 6.4 Ligands [i](#)

In the following table, the Atoms column lists the number of modelled atoms in the group and the number defined in the chemical component dictionary. The B-factors column lists the minimum, median, 95<sup>th</sup> percentile and maximum values of B factors of atoms in the group. The column labelled ‘Q < 0.9’ lists the number of atoms with occupancy less than 0.9.

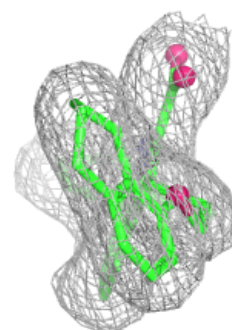
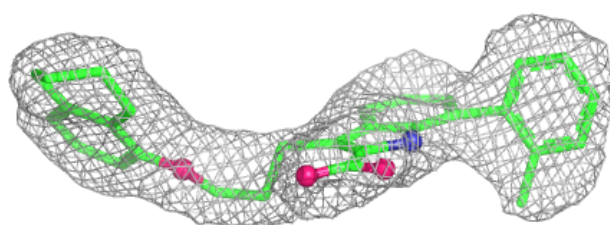
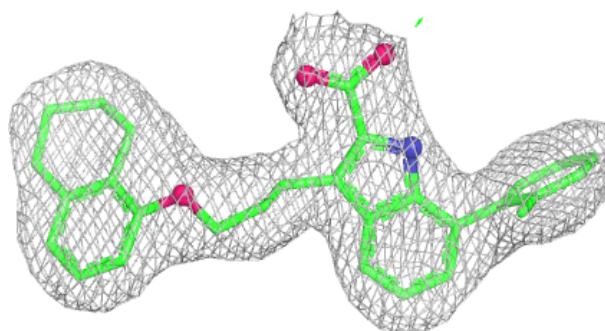
Mol	Type	Chain	Res	Atoms	RSCC	RSR	B-factors(Å <sup>2</sup> )	Q<0.9
2	E4K	A	401	33/33	0.99	0.03	21,30,37,40	0
2	E4K	A	402	33/33	0.99	0.04	19,27,36,39	0
2	E4K	B	401	33/33	0.99	0.03	12,31,36,37	0
2	E4K	B	402	33/33	0.99	0.03	18,29,36,38	0

The following is a graphical depiction of the model fit to experimental electron density of all instances of the Ligand of Interest. In addition, ligands with molecular weight > 250 and outliers

as shown on the geometry validation Tables will also be included. Each fit is shown from different orientation to approximate a three-dimensional view.

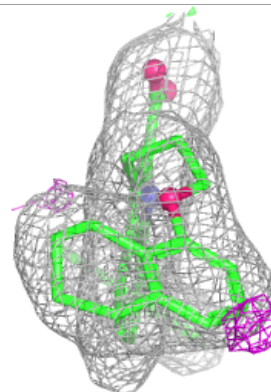
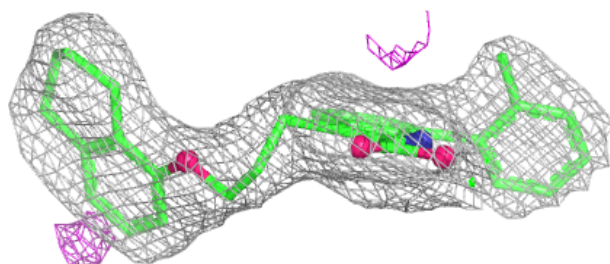
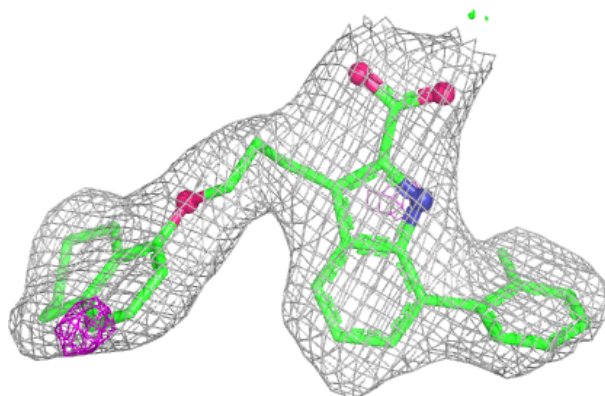
**Electron density around E4K A 401:**

$2mF_o-DF_c$  (at 0.7 rmsd) in gray  
 $mF_o-DF_c$  (at 3 rmsd) in purple (negative)  
and green (positive)



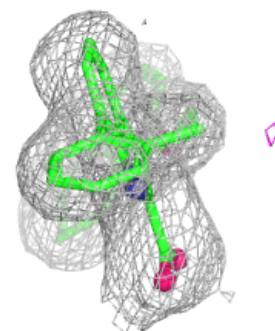
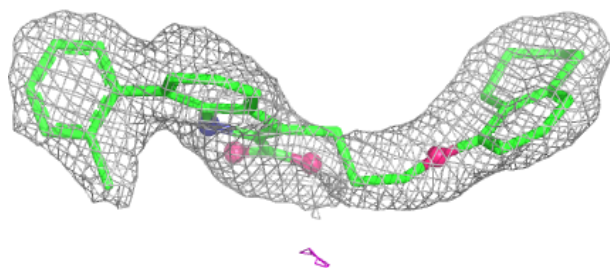
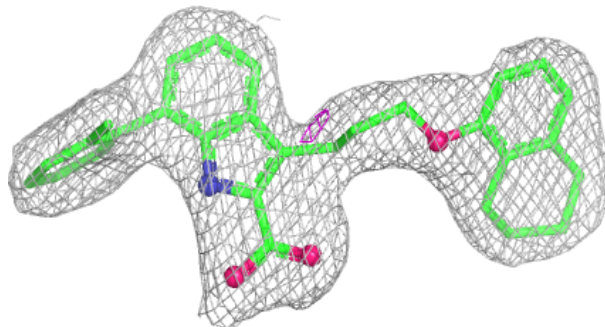
**Electron density around E4K A 402:**

$2mF_o-DF_c$  (at 0.7 rmsd) in gray  
 $mF_o-DF_c$  (at 3 rmsd) in purple (negative)  
and green (positive)

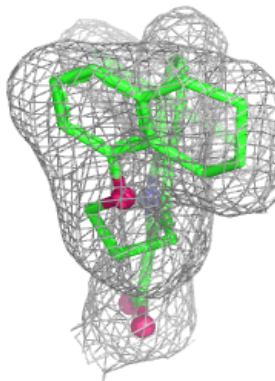
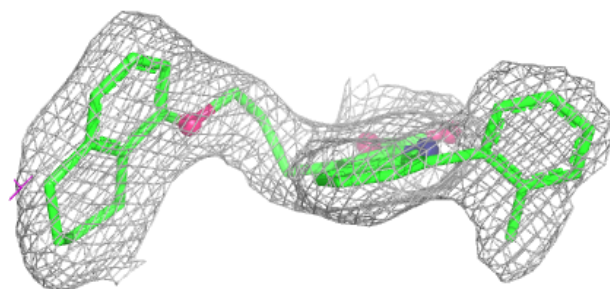
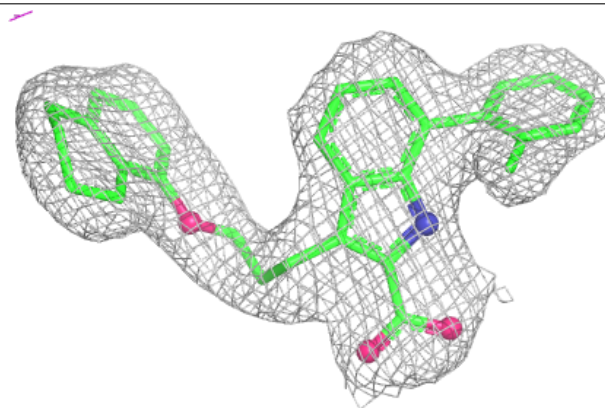


**Electron density around E4K B 401:**

$2mF_o-DF_c$  (at 0.7 rmsd) in gray  
 $mF_o-DF_c$  (at 3 rmsd) in purple (negative)  
and green (positive)

**Electron density around E4K B 402:**

$2mF_o-DF_c$  (at 0.7 rmsd) in gray  
 $mF_o-DF_c$  (at 3 rmsd) in purple (negative)  
and green (positive)



## 6.5 Other polymers [i](#)

There are no such residues in this entry.