



Full wwPDB X-ray Structure Validation Report ⓘ

Nov 9, 2024 – 01:24 pm GMT

PDB ID : 6FMR
Title : IMISX-EP of Se-PepTSt
Authors : Huang, C.-Y.; Olieric, V.; Howe, N.; Warshamanage, R.; Weinert, T.;
Panepucci, E.; Vogeley, L.; Basu, S.; Diederichs, K.; Caffrey, M.; Wang, M.
Deposited on : 2018-02-02
Resolution : 2.70 Å(reported)

This is a Full wwPDB X-ray Structure Validation Report for a publicly released PDB entry.

We welcome your comments at validation@mail.wwpdb.org

A user guide is available at

<https://www.wwpdb.org/validation/2017/XrayValidationReportHelp>

with specific help available everywhere you see the ⓘ symbol.

The types of validation reports are described at

<http://www.wwpdb.org/validation/2017/FAQs#types>.

The following versions of software and data (see [references ⓘ](#)) were used in the production of this report:

MolProbity : 4.02b-467
Mogul : 1.8.4, CSD as541be (2020)
Xtrriage (Phenix) : 1.13
EDS : 3.0
buster-report : 1.1.7 (2018)
Percentile statistics : 20231227.v01 (using entries in the PDB archive December 27th 2023)
CCP4 : 9.0.003 (Gargrove)
Density-Fitness : 1.0.11
Ideal geometry (proteins) : Engh & Huber (2001)
Ideal geometry (DNA, RNA) : Parkinson et al. (1996)
Validation Pipeline (wwPDB-VP) : 2.39

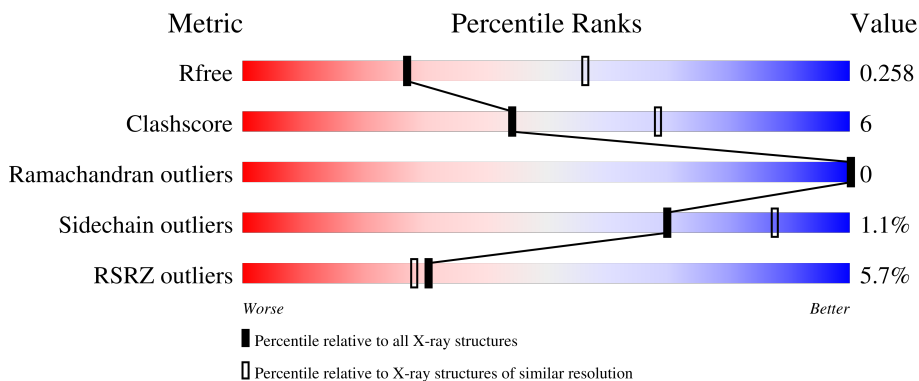
1 Overall quality at a glance

The following experimental techniques were used to determine the structure:

X-RAY DIFFRACTION

The reported resolution of this entry is 2.70 Å.

Percentile scores (ranging between 0-100) for global validation metrics of the entry are shown in the following graphic. The table shows the number of entries on which the scores are based.



Metric	Whole archive (#Entries)	Similar resolution (#Entries, resolution range(Å))
R_{free}	164625	3333 (2.70-2.70)
Clashscore	180529	3684 (2.70-2.70)
Ramachandran outliers	177936	3633 (2.70-2.70)
Sidechain outliers	177891	3633 (2.70-2.70)
RSRZ outliers	164620	3333 (2.70-2.70)

The table below summarises the geometric issues observed across the polymeric chains and their fit to the electron density. The red, orange, yellow and green segments of the lower bar indicate the fraction of residues that contain outliers for ≥ 3 , 2, 1 and 0 types of geometric quality criteria respectively. A grey segment represents the fraction of residues that are not modelled. The numeric value for each fraction is indicated below the corresponding segment, with a dot representing fractions $\leq 5\%$. The upper red bar (where present) indicates the fraction of residues that have poor fit to the electron density. The numeric value is given above the bar.

Mol	Chain	Length	Quality of chain
1	A	483	

2 Entry composition [i](#)

There are 4 unique types of molecules in this entry. The entry contains 3930 atoms, of which 0 are hydrogens and 0 are deuteriums.

In the tables below, the ZeroOcc column contains the number of atoms modelled with zero occupancy, the AltConf column contains the number of residues with at least one atom in alternate conformation and the Trace column contains the number of residues modelled with at most 2 atoms.

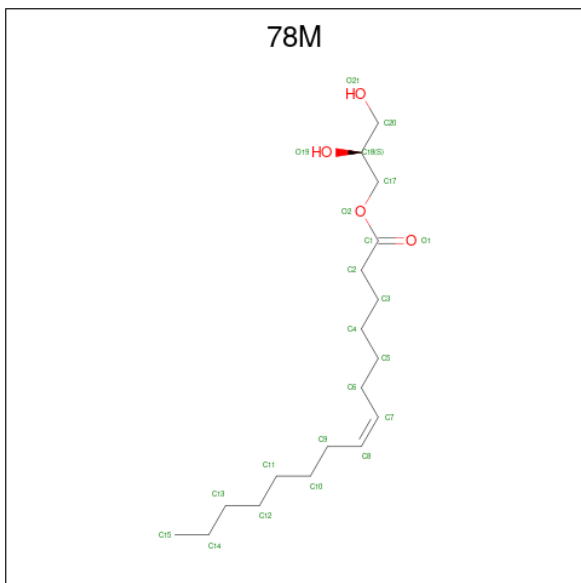
- Molecule 1 is a protein called Di-or tripeptide:H⁺ symporter.

Mol	Chain	Residues	Atoms					ZeroOcc	AltConf	Trace
			Total	C	N	O	Se			
1	A	475	3649	2451	565	615	18	0	0	0

There is a discrepancy between the modelled and reference sequences:

Chain	Residue	Modelled	Actual	Comment	Reference
A	1	MSE	-	initiating methionine	UNP Q5M4H8

- Molecule 2 is (2S)-2,3-DIHYDROXYPROPYL(7Z)-PENTADEC-7-ENOATE (three-letter code: 78M) (formula: C₁₈H₃₄O₄).



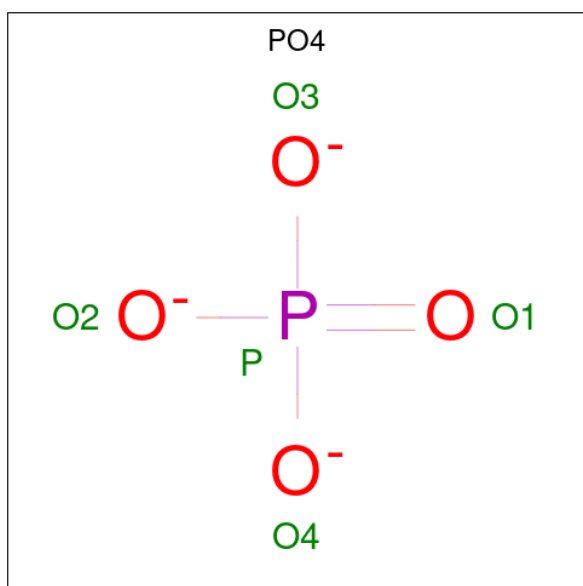
Mol	Chain	Residues	Atoms			ZeroOcc	AltConf
2	A	1	Total	C	O	0	0
			20	16	4		
2	A	1	Total	C	O	0	0
			22	18	4		

Continued on next page...

Continued from previous page...

Mol	Chain	Residues	Atoms			ZeroOcc	AltConf
2	A	1	Total	C	O	0	0
			22	18	4		
2	A	1	Total	C	O	0	0
			19	15	4		
2	A	1	Total	C	O	0	0
			22	18	4		
2	A	1	Total	C	O	0	0
			14	10	4		
2	A	1	Total	C	O	0	0
			14	10	4		
2	A	1	Total	C	O	0	0
			14	10	4		
2	A	1	Total	C	O	0	0
			18	14	4		
2	A	1	Total	C	O	0	0
			16	12	4		
2	A	1	Total	C	O	0	0
			13	9	4		
2	A	1	Total	C	O	0	0
			10	6	4		
2	A	1	Total	C	O	0	0
			13	9	4		
2	A	1	Total	C	O	0	0
			22	18	4		

- Molecule 3 is PHOSPHATE ION (three-letter code: PO4) (formula: O₄P).



Mol	Chain	Residues	Atoms			ZeroOcc	AltConf
3	A	1	Total	O	P	0	0
			5	4	1		

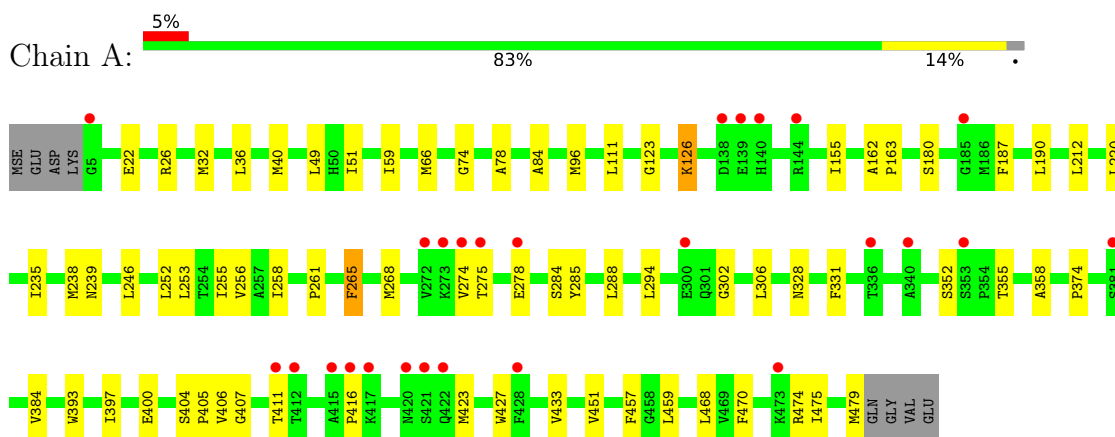
- Molecule 4 is water.

Mol	Chain	Residues	Atoms		ZeroOcc	AltConf
4	A	37	Total	O	0	0
			37	37		

3 Residue-property plots [i](#)

These plots are drawn for all protein, RNA, DNA and oligosaccharide chains in the entry. The first graphic for a chain summarises the proportions of the various outlier classes displayed in the second graphic. The second graphic shows the sequence view annotated by issues in geometry and electron density. Residues are color-coded according to the number of geometric quality criteria for which they contain at least one outlier: green = 0, yellow = 1, orange = 2 and red = 3 or more. A red dot above a residue indicates a poor fit to the electron density ($RSRZ > 2$). Stretches of 2 or more consecutive residues without any outlier are shown as a green connector. Residues present in the sample, but not in the model, are shown in grey.

- Molecule 1: Di- or tripeptide:H⁺ symporter



4 Data and refinement statistics

Property	Value	Source
Space group	C 2 2 21	Depositor
Cell constants a, b, c, α , β , γ	103.68Å 110.89Å 110.38Å 90.00° 90.00° 90.00°	Depositor
Resolution (Å)	49.54 – 2.70 49.54 – 2.70	Depositor EDS
% Data completeness (in resolution range)	100.0 (49.54-2.70) 93.6 (49.54-2.70)	Depositor EDS
R_{merge}	(Not available)	Depositor
R_{sym}	(Not available)	Depositor
$\langle I/\sigma(I) \rangle$ ¹	0.98 (at 2.69Å)	Xtrriage
Refinement program	PHENIX	Depositor
R, R_{free}	0.227 , 0.254 0.235 , 0.258	Depositor DCC
R_{free} test set	876 reflections (4.93%)	wwPDB-VP
Wilson B-factor (Å ²)	45.6	Xtrriage
Anisotropy	0.227	Xtrriage
Bulk solvent k_{sol} (e/Å ³), B_{sol} (Å ²)	0.27 , 21.3	EDS
L-test for twinning ²	$\langle L \rangle = 0.48$, $\langle L^2 \rangle = 0.31$	Xtrriage
Estimated twinning fraction	No twinning to report.	Xtrriage
F_o, F_c correlation	0.91	EDS
Total number of atoms	3930	wwPDB-VP
Average B, all atoms (Å ²)	54.0	wwPDB-VP

Xtrriage's analysis on translational NCS is as follows: *The largest off-origin peak in the Patterson function is 5.74% of the height of the origin peak. No significant pseudotranslation is detected.*

¹Intensities estimated from amplitudes.

²Theoretical values of $\langle |L| \rangle$, $\langle L^2 \rangle$ for acentric reflections are 0.5, 0.333 respectively for untwinned datasets, and 0.375, 0.2 for perfectly twinned datasets.

5 Model quality [i](#)

5.1 Standard geometry [i](#)

Bond lengths and bond angles in the following residue types are not validated in this section: 78M, PO4

The Z score for a bond length (or angle) is the number of standard deviations the observed value is removed from the expected value. A bond length (or angle) with $|Z| > 5$ is considered an outlier worth inspection. RMSZ is the root-mean-square of all Z scores of the bond lengths (or angles).

Mol	Chain	Bond lengths		Bond angles	
		RMSZ	# Z >5	RMSZ	# Z >5
1	A	0.24	0/3741	0.38	0/5080

There are no bond length outliers.

There are no bond angle outliers.

There are no chirality outliers.

There are no planarity outliers.

5.2 Too-close contacts [i](#)

In the following table, the Non-H and H(model) columns list the number of non-hydrogen atoms and hydrogen atoms in the chain respectively. The H(added) column lists the number of hydrogen atoms added and optimized by MolProbity. The Clashes column lists the number of clashes within the asymmetric unit, whereas Symm-Clashes lists symmetry-related clashes.

Mol	Chain	Non-H	H(model)	H(added)	Clashes	Symm-Clashes
1	A	3649	0	3715	46	0
2	A	239	0	320	8	0
3	A	5	0	0	0	0
4	A	37	0	0	1	0
All	All	3930	0	4035	47	0

The all-atom clashscore is defined as the number of clashes found per 1000 atoms (including hydrogen atoms). The all-atom clashscore for this structure is 6.

All (47) close contacts within the same asymmetric unit are listed below, sorted by their clash magnitude.

Atom-1	Atom-2	Interatomic distance (Å)	Clash overlap (Å)
1:A:411:THR:HG21	1:A:427:TRP:HB2	1.68	0.74
1:A:238:MSE:HE1	1:A:252:LEU:HB2	1.80	0.63
1:A:328:ASN:HA	1:A:397:ILE:HD11	1.80	0.63
1:A:40:MSE:HE1	1:A:59:ILE:HG21	1.84	0.60
1:A:288:LEU:HD11	1:A:475:ILE:HG21	1.84	0.59
1:A:302:GLY:HA2	1:A:306:LEU:HB2	1.83	0.58
1:A:235:ILE:O	1:A:239:ASN:ND2	2.39	0.56
1:A:474:ARG:NH1	4:A:602:HOH:O	2.40	0.55
1:A:96:MSE:HE2	1:A:187:PHE:HA	1.90	0.53
1:A:400:GLU:O	1:A:404:SER:OG	2.23	0.53
1:A:26:ARG:HG3	1:A:155:ILE:HG23	1.90	0.52
1:A:358:ALA:HB2	1:A:468:LEU:HB3	1.92	0.52
1:A:59:ILE:HG23	2:A:507:78M:H21C	1.92	0.52
1:A:278:GLU:HB3	1:A:416:PRO:HB3	1.92	0.51
1:A:49:LEU:HG	1:A:51:ILE:HG12	1.92	0.51
1:A:470:PHE:O	1:A:474:ARG:NH2	2.44	0.51
1:A:459:LEU:HD13	2:A:511:78M:H21C	1.93	0.51
1:A:59:ILE:HD11	1:A:246:LEU:HD21	1.94	0.50
1:A:268:MSE:HE1	1:A:423:MSE:SE	2.62	0.50
1:A:261:PRO:HG2	1:A:433:VAL:HG21	1.94	0.49
1:A:331:PHE:HB2	1:A:397:ILE:HD13	1.93	0.49
1:A:253:LEU:HA	1:A:256:VAL:HG22	1.95	0.49
1:A:475:ILE:HG22	1:A:479:MSE:HE3	1.96	0.48
1:A:285:TYR:CE1	1:A:411:THR:HG22	2.49	0.47
1:A:274:VAL:O	1:A:275:THR:OG1	2.28	0.47
1:A:284:SER:HB2	1:A:475:ILE:HG12	1.96	0.47
1:A:457:PHE:HB3	2:A:515:78M:H152	1.97	0.47
1:A:255:ILE:HD12	2:A:509:78M:H51C	1.97	0.47
1:A:352:SER:O	1:A:355:THR:OG1	2.28	0.47
1:A:374:PRO:HB2	1:A:384:VAL:HG11	1.96	0.47
1:A:32:MSE:SE	1:A:36:LEU:HD22	2.66	0.46
1:A:66:MSE:SE	1:A:253:LEU:HD23	2.66	0.45
1:A:451:VAL:HG11	2:A:501:78M:H202	1.99	0.45
1:A:22:GLU:OE2	1:A:126:LYS:HE3	2.17	0.45
1:A:74:GLY:HA3	1:A:123:GLY:O	2.17	0.45
1:A:78:ALA:HB1	1:A:84:ALA:HA	1.99	0.44
1:A:404:SER:OG	1:A:405:PRO:HD3	2.17	0.44
1:A:258:ILE:HG12	1:A:433:VAL:HG13	2.00	0.43
1:A:294:LEU:HD21	2:A:512:78M:H52C	2.01	0.43
1:A:180:SER:HB3	2:A:503:78M:H52C	2.01	0.42
1:A:40:MSE:HE2	1:A:111:LEU:HD13	2.00	0.42
2:A:504:78M:H101	2:A:505:78M:H112	2.01	0.42

Continued on next page...

Continued from previous page...

Atom-1	Atom-2	Interatomic distance (Å)	Clash overlap (Å)
1:A:407:GLY:HA3	1:A:427:TRP:CH2	2.56	0.41
1:A:162:ALA:HB3	1:A:163:PRO:HD3	2.03	0.41
1:A:212:LEU:HD21	1:A:220:LEU:HD23	2.03	0.41
1:A:96:MSE:HE3	1:A:190:LEU:HD12	2.02	0.40
1:A:265:PHE:HD1	1:A:265:PHE:HA	1.80	0.40

There are no symmetry-related clashes.

5.3 Torsion angles [i](#)

5.3.1 Protein backbone [i](#)

In the following table, the Percentiles column shows the percent Ramachandran outliers of the chain as a percentile score with respect to all X-ray entries followed by that with respect to entries of similar resolution.

The Analysed column shows the number of residues for which the backbone conformation was analysed, and the total number of residues.

Mol	Chain	Analysed	Favoured	Allowed	Outliers	Percentiles
1	A	473/483 (98%)	464 (98%)	9 (2%)	0	100 100

There are no Ramachandran outliers to report.

5.3.2 Protein sidechains [i](#)

In the following table, the Percentiles column shows the percent sidechain outliers of the chain as a percentile score with respect to all X-ray entries followed by that with respect to entries of similar resolution.

The Analysed column shows the number of residues for which the sidechain conformation was analysed, and the total number of residues.

Mol	Chain	Analysed	Rotameric	Outliers	Percentiles
1	A	379/372 (102%)	375 (99%)	4 (1%)	70 87

All (4) residues with a non-rotameric sidechain are listed below:

Mol	Chain	Res	Type
1	A	126	LYS

Continued on next page...

Continued from previous page...

Mol	Chain	Res	Type
1	A	265	PHE
1	A	393	TRP
1	A	406	VAL

Sometimes sidechains can be flipped to improve hydrogen bonding and reduce clashes. There are no such sidechains identified.

5.3.3 RNA [i](#)

There are no RNA molecules in this entry.

5.4 Non-standard residues in protein, DNA, RNA chains [i](#)

There are no non-standard protein/DNA/RNA residues in this entry.

5.5 Carbohydrates [i](#)

There are no oligosaccharides in this entry.

5.6 Ligand geometry [i](#)

15 ligands are modelled in this entry.

In the following table, the Counts columns list the number of bonds (or angles) for which Mogul statistics could be retrieved, the number of bonds (or angles) that are observed in the model and the number of bonds (or angles) that are defined in the Chemical Component Dictionary. The Link column lists molecule types, if any, to which the group is linked. The Z score for a bond length (or angle) is the number of standard deviations the observed value is removed from the expected value. A bond length (or angle) with $|Z| > 2$ is considered an outlier worth inspection. RMSZ is the root-mean-square of all Z scores of the bond lengths (or angles).

Mol	Type	Chain	Res	Link	Bond lengths			Bond angles		
					Counts	RMSZ	# Z > 2	Counts	RMSZ	# Z > 2
2	78M	A	514	-	12,12,21	1.11	2 (16%)	13,13,22	1.04	1 (7%)
2	78M	A	505	-	21,21,21	0.85	2 (9%)	22,22,22	0.96	1 (4%)
2	78M	A	501	-	19,19,21	0.89	2 (10%)	20,20,22	0.97	1 (5%)
2	78M	A	510	-	17,17,21	0.96	2 (11%)	18,18,22	0.99	1 (5%)
2	78M	A	502	-	21,21,21	0.86	2 (9%)	22,22,22	0.94	1 (4%)
2	78M	A	503	-	21,21,21	0.85	2 (9%)	22,22,22	0.97	1 (4%)

Mol	Type	Chain	Res	Link	Bond lengths			Bond angles		
					Counts	RMSZ	# Z > 2	Counts	RMSZ	# Z > 2
2	78M	A	504	-	18,18,21	0.92	2 (11%)	19,19,22	0.96	1 (5%)
2	78M	A	509	-	13,13,21	1.07	2 (15%)	14,14,22	1.05	1 (7%)
2	78M	A	506	-	13,13,21	1.06	2 (15%)	14,14,22	1.02	1 (7%)
2	78M	A	513	-	9,9,21	1.25	2 (22%)	10,10,22	1.28	1 (10%)
3	PO4	A	508	-	4,4,4	0.93	0	6,6,6	0.43	0
2	78M	A	515	-	21,21,21	0.86	2 (9%)	22,22,22	0.94	1 (4%)
2	78M	A	512	-	12,12,21	1.08	2 (16%)	13,13,22	1.05	1 (7%)
2	78M	A	507	-	13,13,21	1.05	2 (15%)	14,14,22	1.07	1 (7%)
2	78M	A	511	-	15,15,21	1.01	2 (13%)	16,16,22	1.04	1 (6%)

In the following table, the Chirals column lists the number of chiral outliers, the number of chiral centers analysed, the number of these observed in the model and the number defined in the Chemical Component Dictionary. Similar counts are reported in the Torsion and Rings columns. '-' means no outliers of that kind were identified.

Mol	Type	Chain	Res	Link	Chirals	Torsions	Rings
2	78M	A	514	-	-	3/12/12/21	-
2	78M	A	505	-	-	6/21/21/21	-
2	78M	A	501	-	-	9/19/19/21	-
2	78M	A	510	-	-	9/17/17/21	-
2	78M	A	502	-	-	7/21/21/21	-
2	78M	A	503	-	-	9/21/21/21	-
2	78M	A	504	-	-	8/18/18/21	-
2	78M	A	509	-	-	8/13/13/21	-
2	78M	A	506	-	-	6/13/13/21	-
2	78M	A	513	-	-	4/9/9/21	-
2	78M	A	515	-	-	12/21/21/21	-
2	78M	A	512	-	-	1/12/12/21	-
2	78M	A	507	-	-	5/13/13/21	-
2	78M	A	511	-	-	5/15/15/21	-

All (28) bond length outliers are listed below:

Mol	Chain	Res	Type	Atoms	Z	Observed(Å)	Ideal(Å)
2	A	510	78M	O2-C1	2.49	1.40	1.33
2	A	514	78M	O2-C1	2.46	1.40	1.33
2	A	504	78M	O2-C1	2.45	1.40	1.33

Continued on next page...

Continued from previous page...

Mol	Chain	Res	Type	Atoms	Z	Observed(Å)	Ideal(Å)
2	A	502	78M	O2-C1	2.45	1.40	1.33
2	A	505	78M	O2-C1	2.44	1.40	1.33
2	A	511	78M	O2-C1	2.44	1.40	1.33
2	A	509	78M	O2-C1	2.43	1.40	1.33
2	A	503	78M	O2-C1	2.42	1.40	1.33
2	A	515	78M	O2-C1	2.42	1.40	1.33
2	A	507	78M	O2-C1	2.42	1.40	1.33
2	A	513	78M	O2-C1	2.42	1.40	1.33
2	A	501	78M	O2-C1	2.42	1.40	1.33
2	A	506	78M	O2-C1	2.41	1.40	1.33
2	A	512	78M	O2-C1	2.41	1.40	1.33
2	A	509	78M	O2-C17	-2.16	1.40	1.45
2	A	513	78M	O2-C17	-2.15	1.40	1.45
2	A	515	78M	O2-C17	-2.13	1.40	1.45
2	A	506	78M	O2-C17	-2.12	1.40	1.45
2	A	514	78M	O2-C17	-2.10	1.40	1.45
2	A	501	78M	O2-C17	-2.09	1.40	1.45
2	A	502	78M	O2-C17	-2.09	1.40	1.45
2	A	507	78M	O2-C17	-2.08	1.40	1.45
2	A	504	78M	O2-C17	-2.07	1.40	1.45
2	A	511	78M	O2-C17	-2.07	1.40	1.45
2	A	503	78M	O2-C17	-2.07	1.40	1.45
2	A	510	78M	O2-C17	-2.05	1.40	1.45
2	A	512	78M	O2-C17	-2.05	1.40	1.45
2	A	505	78M	O2-C17	-2.05	1.40	1.45

All (14) bond angle outliers are listed below:

Mol	Chain	Res	Type	Atoms	Z	Observed(°)	Ideal(°)
2	A	513	78M	O2-C1-C2	3.34	120.13	111.38
2	A	510	78M	O2-C1-C2	2.75	120.54	111.91
2	A	503	78M	O2-C1-C2	2.68	120.31	111.91
2	A	507	78M	O2-C1-C2	2.66	120.24	111.91
2	A	501	78M	O2-C1-C2	2.65	120.22	111.91
2	A	505	78M	O2-C1-C2	2.62	120.12	111.91
2	A	514	78M	O2-C1-C2	2.61	120.09	111.91
2	A	504	78M	O2-C1-C2	2.61	120.09	111.91
2	A	509	78M	O2-C1-C2	2.59	120.02	111.91
2	A	512	78M	O2-C1-C2	2.54	119.89	111.91
2	A	511	78M	O2-C1-C2	2.54	119.88	111.91
2	A	502	78M	O2-C1-C2	2.54	119.88	111.91
2	A	506	78M	O2-C1-C2	2.53	119.85	111.91

Continued on next page...

Continued from previous page...

Mol	Chain	Res	Type	Atoms	Z	Observed(°)	Ideal(°)
2	A	515	78M	O2-C1-C2	2.51	119.78	111.91

There are no chirality outliers.

All (92) torsion outliers are listed below:

Mol	Chain	Res	Type	Atoms
2	A	501	78M	C17-C18-C20-O21
2	A	501	78M	O2-C17-C18-C20
2	A	502	78M	O2-C17-C18-C20
2	A	502	78M	O2-C17-C18-O19
2	A	503	78M	C17-C18-C20-O21
2	A	504	78M	O2-C17-C18-C20
2	A	507	78M	C17-C18-C20-O21
2	A	507	78M	O2-C17-C18-C20
2	A	509	78M	C17-C18-C20-O21
2	A	510	78M	O2-C17-C18-O19
2	A	515	78M	C17-C18-C20-O21
2	A	501	78M	O1-C1-O2-C17
2	A	503	78M	C2-C1-O2-C17
2	A	503	78M	O1-C1-O2-C17
2	A	513	78M	O1-C1-O2-C17
2	A	514	78M	O1-C1-O2-C17
2	A	501	78M	C2-C1-O2-C17
2	A	513	78M	C2-C1-O2-C17
2	A	514	78M	C2-C1-O2-C17
2	A	501	78M	O2-C17-C18-O19
2	A	504	78M	O2-C17-C18-O19
2	A	507	78M	O2-C17-C18-O19
2	A	506	78M	C2-C1-O2-C17
2	A	506	78M	O1-C1-O2-C17
2	A	509	78M	C2-C1-O2-C17
2	A	503	78M	O2-C17-C18-C20
2	A	506	78M	O2-C17-C18-C20
2	A	510	78M	O2-C17-C18-C20
2	A	511	78M	C1-C2-C3-C4
2	A	503	78M	O19-C18-C20-O21
2	A	509	78M	O19-C18-C20-O21
2	A	505	78M	C1-C2-C3-C4
2	A	510	78M	C1-C2-C3-C4
2	A	509	78M	O1-C1-O2-C17
2	A	503	78M	O2-C17-C18-O19
2	A	509	78M	O2-C17-C18-O19

Continued on next page...

Continued from previous page...

Mol	Chain	Res	Type	Atoms
2	A	515	78M	C2-C1-O2-C17
2	A	511	78M	C2-C1-O2-C17
2	A	509	78M	O2-C17-C18-C20
2	A	512	78M	C2-C3-C4-C5
2	A	506	78M	O2-C17-C18-O19
2	A	515	78M	C11-C10-C9-C8
2	A	504	78M	C2-C3-C4-C5
2	A	507	78M	C1-C2-C3-C4
2	A	501	78M	O19-C18-C20-O21
2	A	507	78M	O19-C18-C20-O21
2	A	515	78M	O19-C18-C20-O21
2	A	515	78M	O1-C1-O2-C17
2	A	511	78M	O1-C1-O2-C17
2	A	501	78M	C4-C5-C6-C7
2	A	511	78M	C4-C5-C6-C7
2	A	510	78M	C2-C1-O2-C17
2	A	515	78M	O2-C17-C18-C20
2	A	504	78M	C11-C10-C9-C8
2	A	511	78M	C3-C4-C5-C6
2	A	505	78M	C3-C4-C5-C6
2	A	502	78M	C3-C4-C5-C6
2	A	503	78M	C2-C3-C4-C5
2	A	510	78M	O1-C1-O2-C17
2	A	503	78M	C11-C12-C13-C14
2	A	502	78M	C4-C5-C6-C7
2	A	504	78M	C4-C5-C6-C7
2	A	515	78M	O2-C17-C18-O19
2	A	515	78M	C12-C13-C14-C15
2	A	504	78M	C3-C4-C5-C6
2	A	514	78M	C1-C2-C3-C4
2	A	515	78M	C4-C5-C6-C7
2	A	504	78M	C1-C2-C3-C4
2	A	503	78M	C3-C4-C5-C6
2	A	501	78M	C11-C10-C9-C8
2	A	509	78M	C1-C2-C3-C4
2	A	506	78M	C4-C5-C6-C7
2	A	505	78M	C2-C1-O2-C17
2	A	515	78M	C18-C17-O2-C1
2	A	513	78M	O19-C18-C20-O21
2	A	513	78M	C17-C18-C20-O21
2	A	505	78M	O1-C1-O2-C17
2	A	502	78M	C9-C10-C11-C12

Continued on next page...

Continued from previous page...

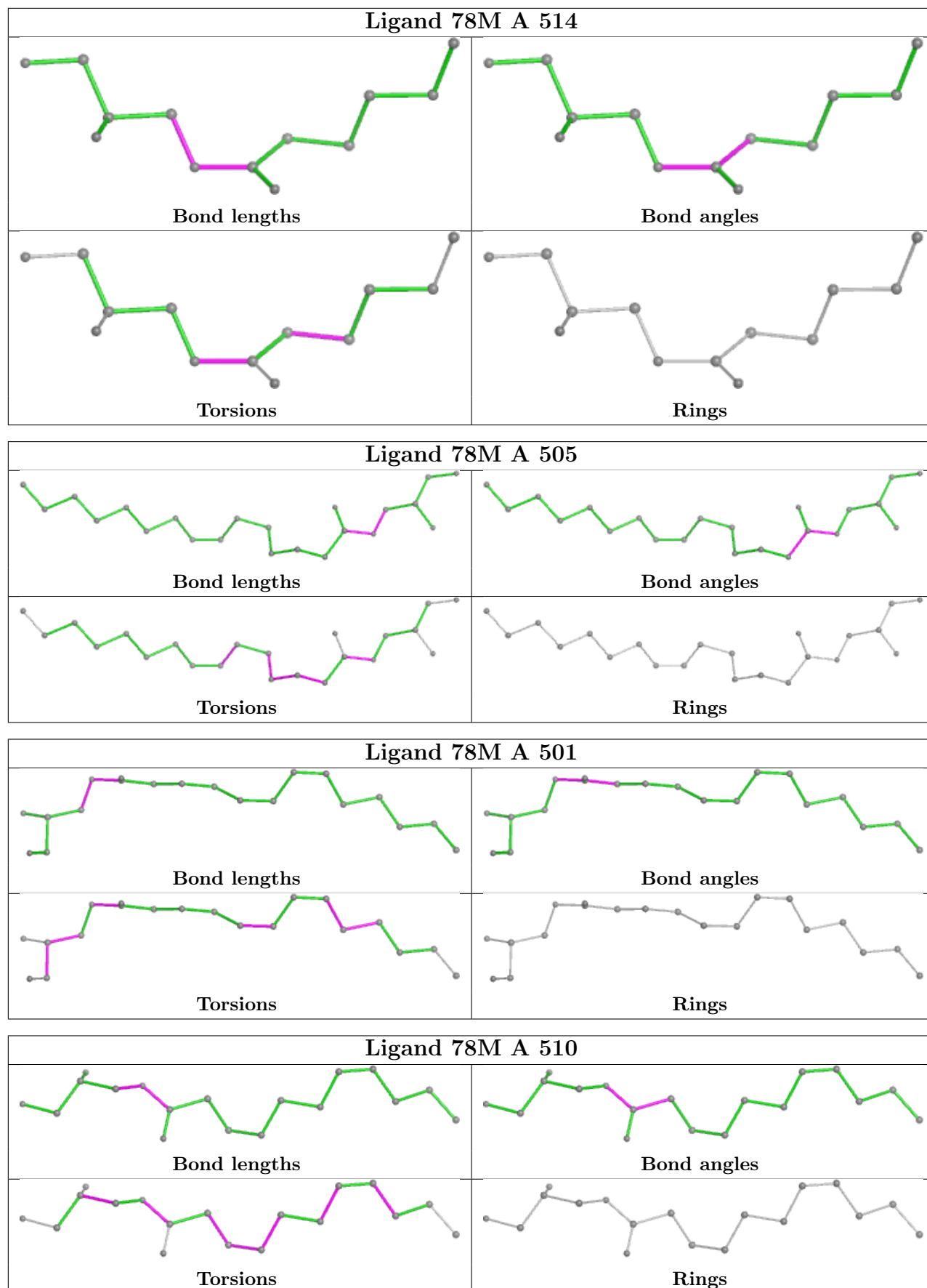
Mol	Chain	Res	Type	Atoms
2	A	510	78M	C3-C4-C5-C6
2	A	502	78M	C1-C2-C3-C4
2	A	510	78M	C2-C3-C4-C5
2	A	515	78M	C1-C2-C3-C4
2	A	502	78M	C11-C10-C9-C8
2	A	509	78M	C2-C3-C4-C5
2	A	515	78M	C5-C6-C7-C8
2	A	505	78M	C5-C6-C7-C8
2	A	501	78M	C7-C8-C9-C10
2	A	510	78M	C5-C6-C7-C8
2	A	506	78M	O19-C18-C20-O21
2	A	504	78M	C5-C6-C7-C8
2	A	505	78M	C2-C3-C4-C5
2	A	510	78M	C7-C8-C9-C10

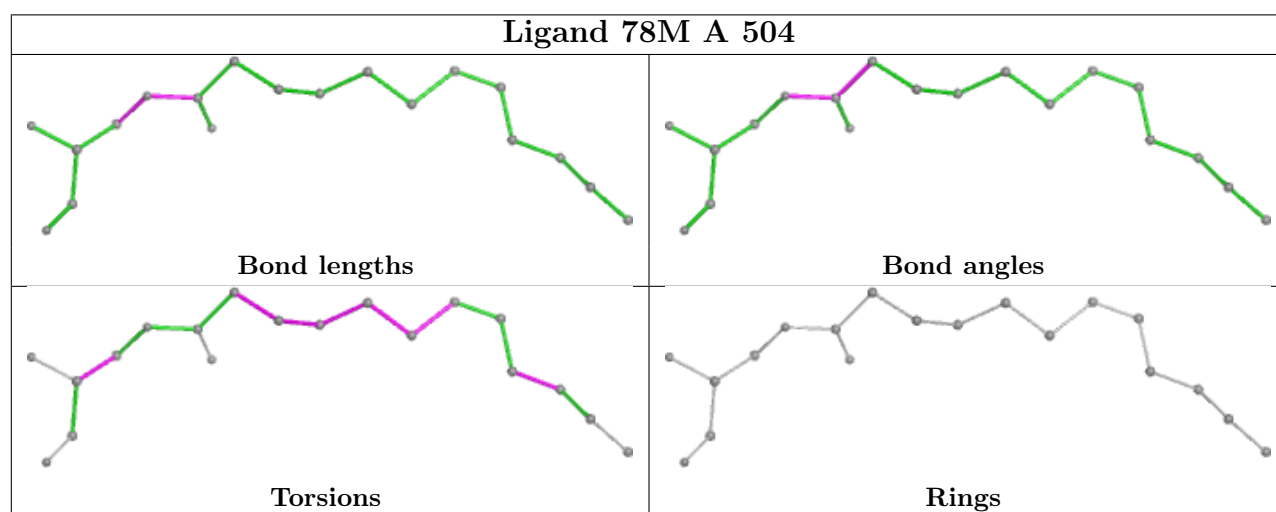
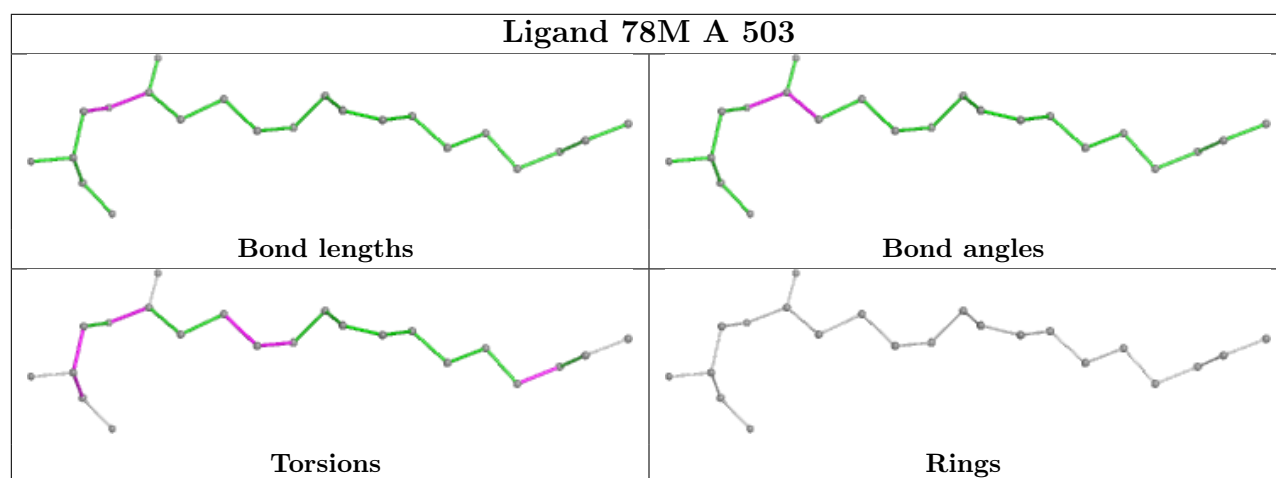
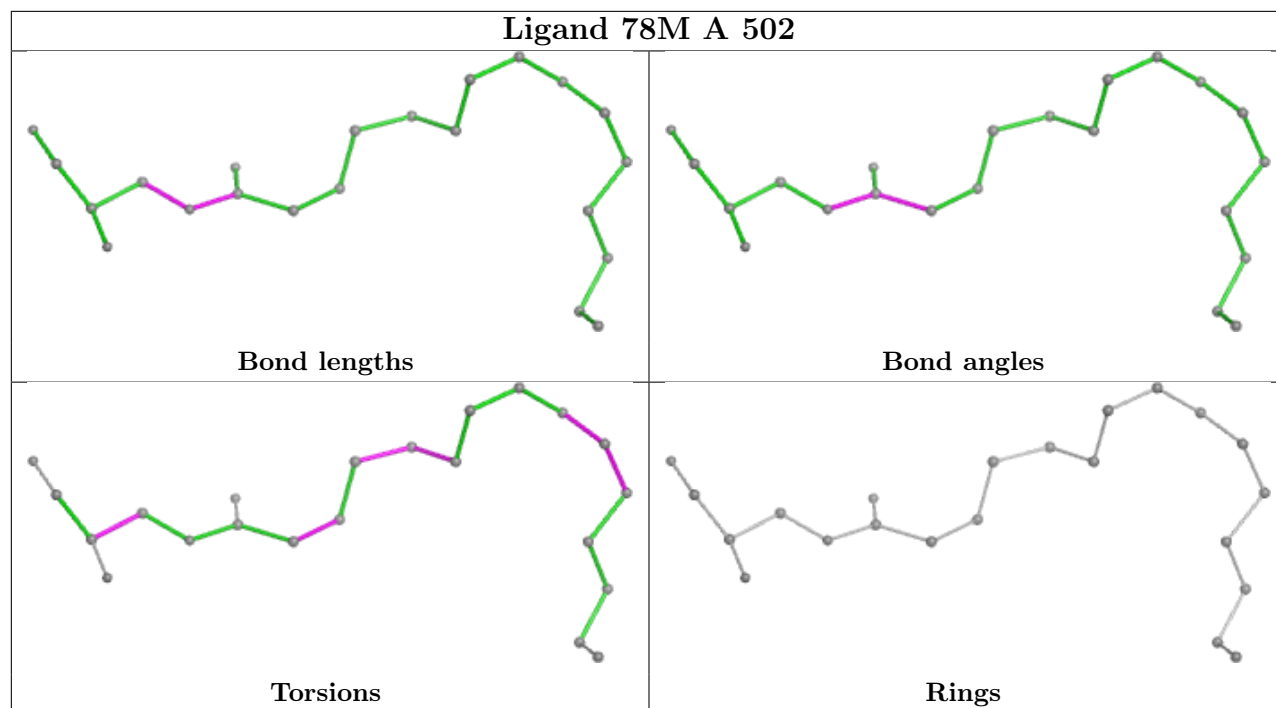
There are no ring outliers.

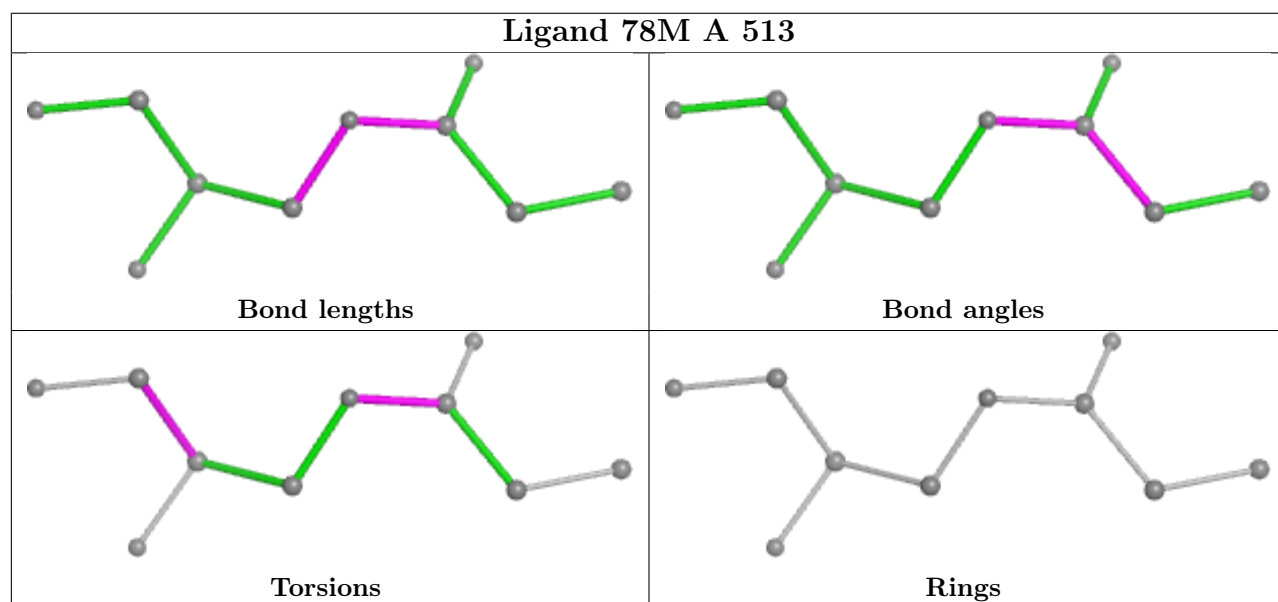
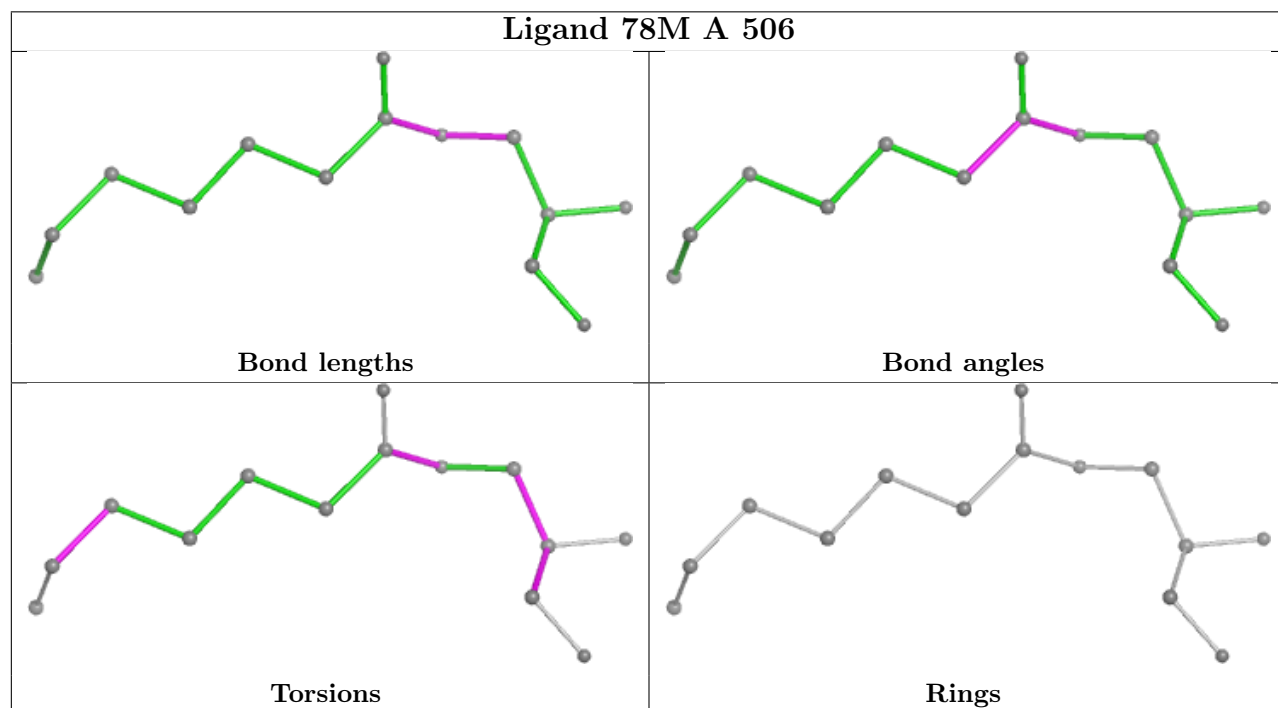
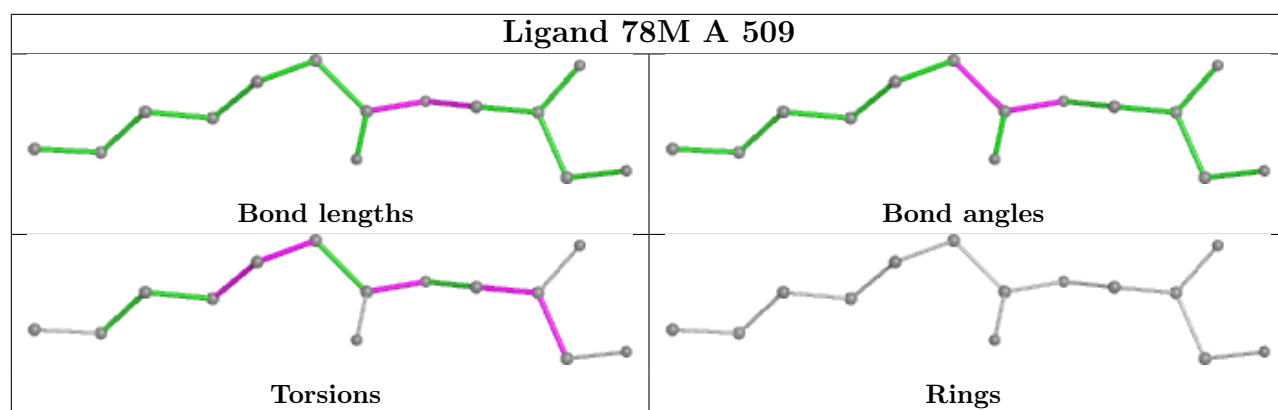
9 monomers are involved in 8 short contacts:

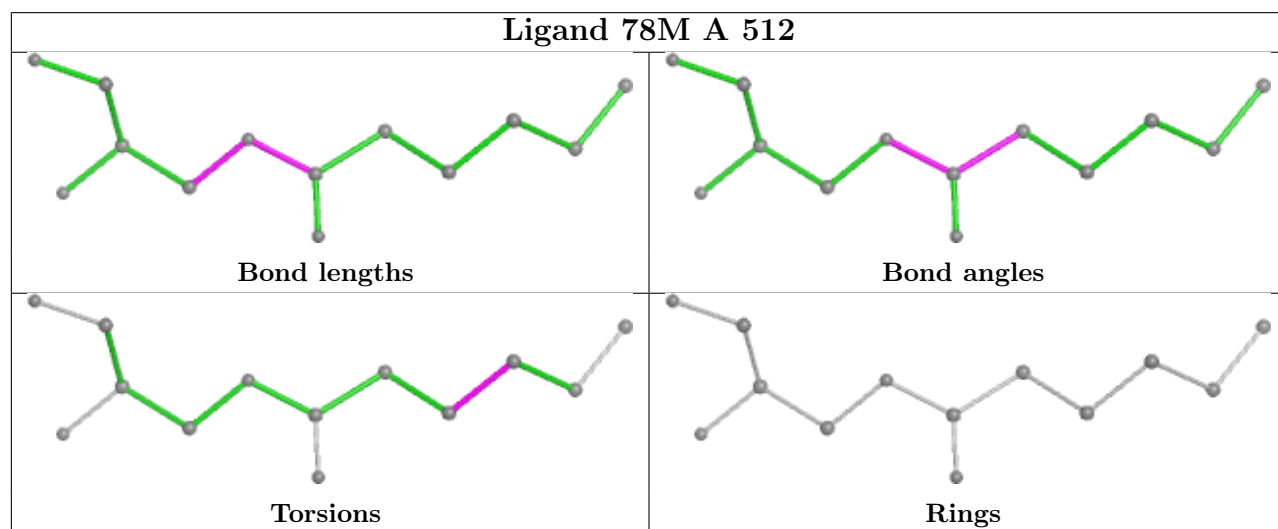
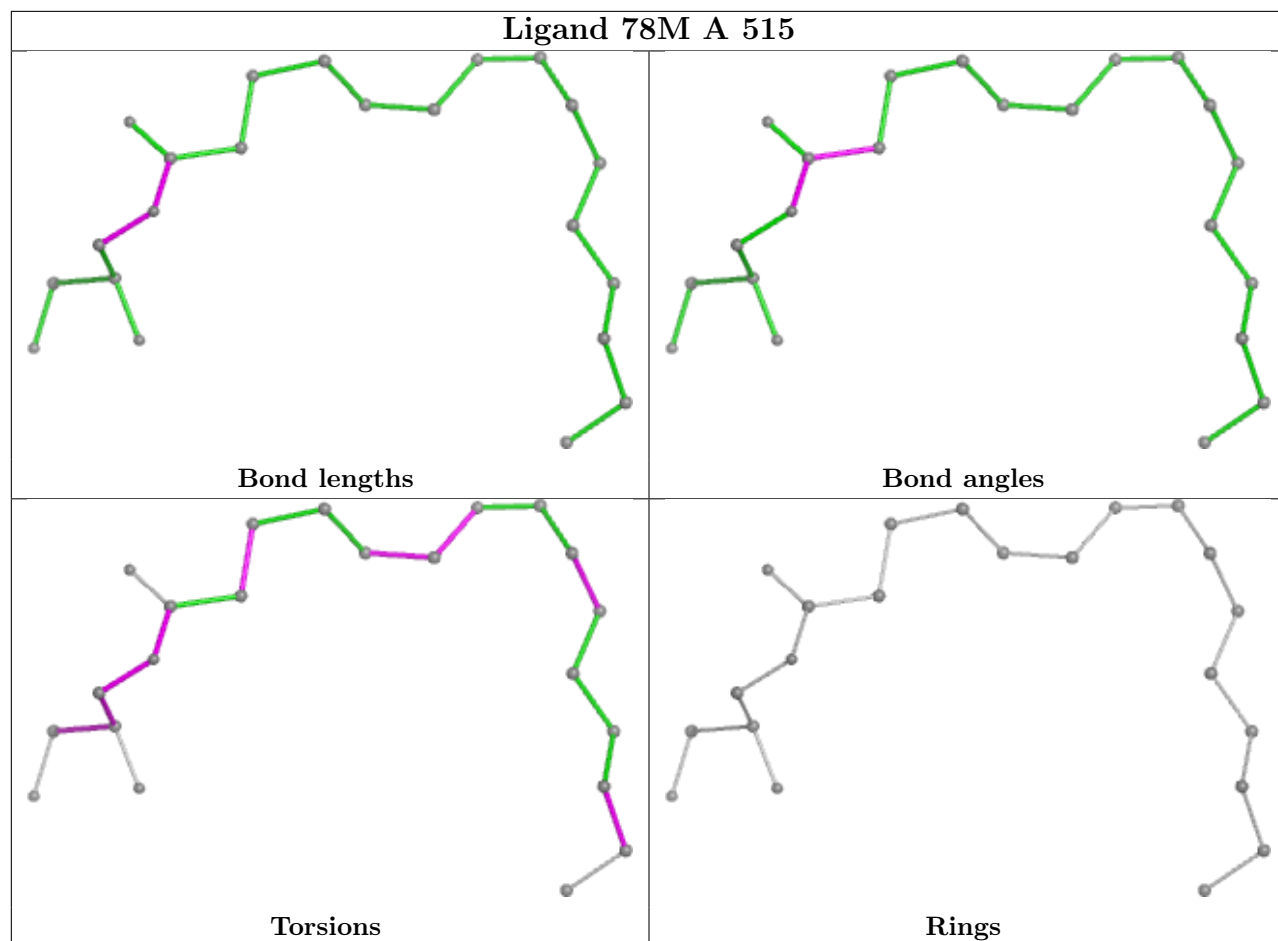
Mol	Chain	Res	Type	Clashes	Symm-Clashes
2	A	505	78M	1	0
2	A	501	78M	1	0
2	A	503	78M	1	0
2	A	504	78M	1	0
2	A	509	78M	1	0
2	A	515	78M	1	0
2	A	512	78M	1	0
2	A	507	78M	1	0
2	A	511	78M	1	0

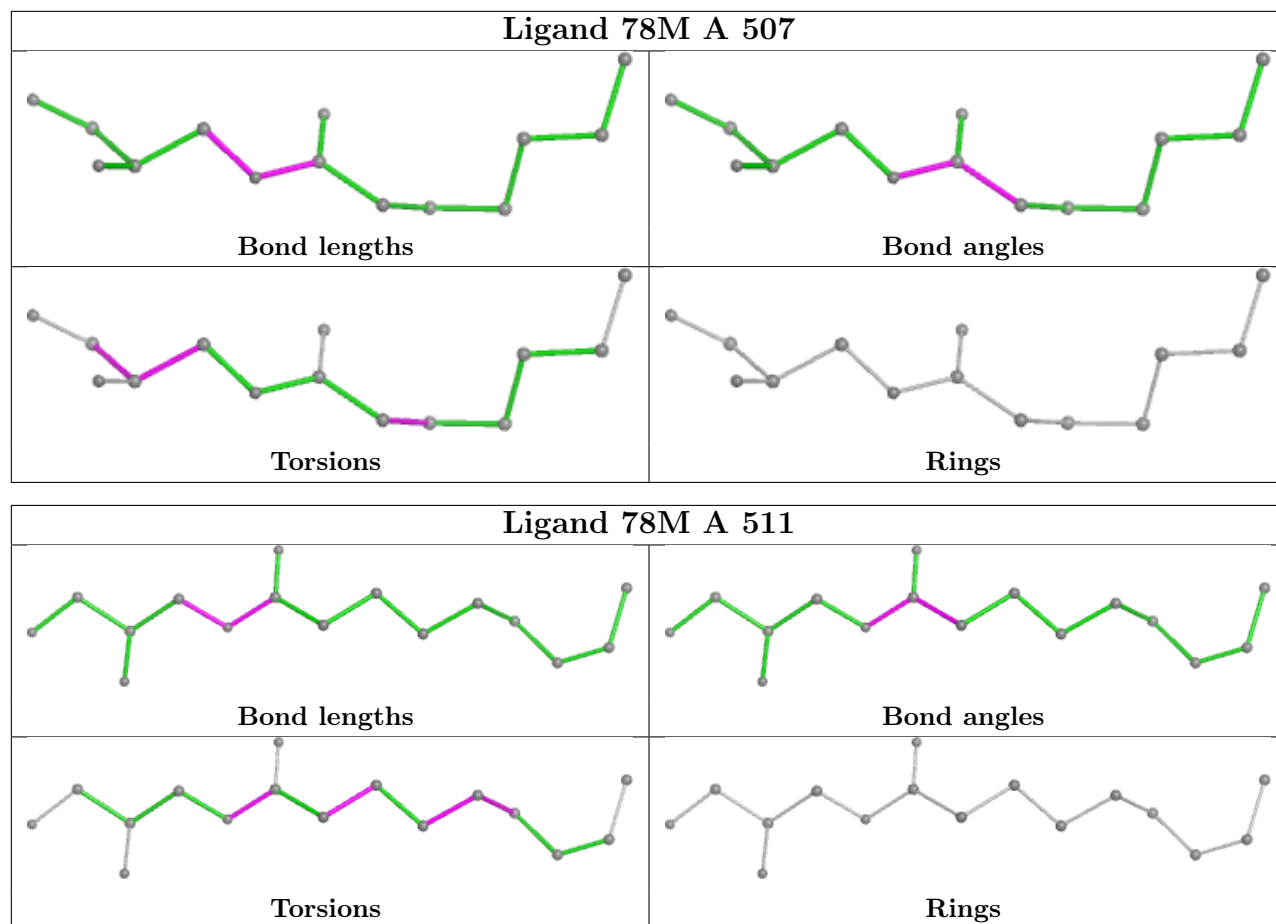
The following is a two-dimensional graphical depiction of Mogul quality analysis of bond lengths, bond angles, torsion angles, and ring geometry for all instances of the Ligand of Interest. In addition, ligands with molecular weight > 250 and outliers as shown on the validation Tables will also be included. For torsion angles, if less than 5% of the Mogul distribution of torsion angles is within 10 degrees of the torsion angle in question, then that torsion angle is considered an outlier. Any bond that is central to one or more torsion angles identified as an outlier by Mogul will be highlighted in the graph. For rings, the root-mean-square deviation (RMSD) between the ring in question and similar rings identified by Mogul is calculated over all ring torsion angles. If the average RMSD is greater than 60 degrees and the minimal RMSD between the ring in question and any Mogul-identified rings is also greater than 60 degrees, then that ring is considered an outlier. The outliers are highlighted in purple. The color gray indicates Mogul did not find sufficient equivalents in the CSD to analyse the geometry.











5.7 Other polymers [\(i\)](#)

There are no such residues in this entry.

5.8 Polymer linkage issues [\(i\)](#)

There are no chain breaks in this entry.

6 Fit of model and data

6.1 Protein, DNA and RNA chains

In the following table, the column labelled ‘#RSRZ> 2’ contains the number (and percentage) of RSRZ outliers, followed by percent RSRZ outliers for the chain as percentile scores relative to all X-ray entries and entries of similar resolution. The OWAB column contains the minimum, median, 95th percentile and maximum values of the occupancy-weighted average B-factor per residue. The column labelled ‘Q< 0.9’ lists the number of (and percentage) of residues with an average occupancy less than 0.9.

Mol	Chain	Analysed	<RSRZ>	#RSRZ>2	OWAB(Å ²)	Q<0.9
1	A	457/483 (94%)	0.50	26 (5%) 30 28	36, 48, 88, 106	0

All (26) RSRZ outliers are listed below:

Mol	Chain	Res	Type	RSRZ
1	A	278	GLU	4.9
1	A	420	ASN	4.7
1	A	274	VAL	4.5
1	A	415	ALA	4.0
1	A	273	LYS	4.0
1	A	140	HIS	3.7
1	A	272	VAL	3.6
1	A	5	GLY	3.5
1	A	139	GLU	3.3
1	A	416	PRO	3.1
1	A	275	THR	3.1
1	A	411	THR	3.1
1	A	144	ARG	3.0
1	A	422	GLN	3.0
1	A	417	LYS	2.8
1	A	428	PHE	2.6
1	A	340	ALA	2.6
1	A	300	GLU	2.4
1	A	473	LYS	2.4
1	A	353	SER	2.4
1	A	185	GLY	2.4
1	A	138	ASP	2.3
1	A	336	THR	2.2
1	A	412	THR	2.1
1	A	421	SER	2.1
1	A	381	SER	2.0

6.2 Non-standard residues in protein, DNA, RNA chains [i](#)

There are no non-standard protein/DNA/RNA residues in this entry.

6.3 Carbohydrates [i](#)

There are no monosaccharides in this entry.

6.4 Ligands [i](#)

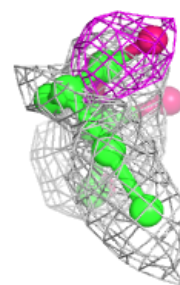
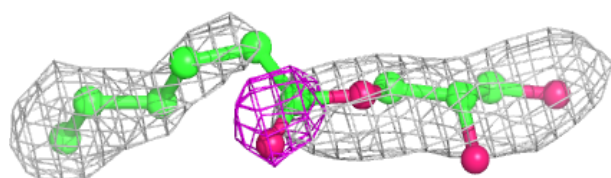
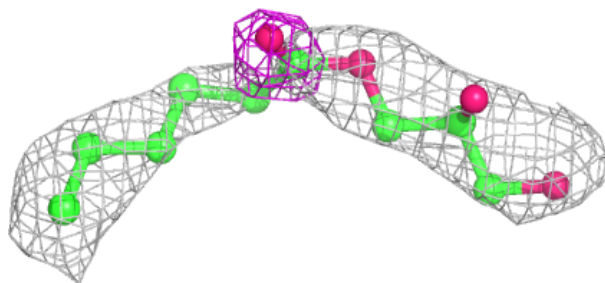
In the following table, the Atoms column lists the number of modelled atoms in the group and the number defined in the chemical component dictionary. The B-factors column lists the minimum, median, 95th percentile and maximum values of B factors of atoms in the group. The column labelled 'Q< 0.9' lists the number of atoms with occupancy less than 0.9.

Mol	Type	Chain	Res	Atoms	RSCC	RSR	B-factors(Å ²)	Q<0.9
2	78M	A	514	13/22	0.66	0.21	54,67,72,73	0
2	78M	A	513	10/22	0.67	0.20	70,79,85,90	0
2	78M	A	503	22/22	0.75	0.17	49,57,64,77	0
2	78M	A	510	18/22	0.76	0.18	55,61,66,67	0
2	78M	A	511	16/22	0.76	0.19	64,68,74,77	0
2	78M	A	515	22/22	0.76	0.19	51,68,80,85	0
2	78M	A	512	13/22	0.77	0.18	63,66,70,71	0
2	78M	A	502	22/22	0.77	0.19	55,66,75,79	0
2	78M	A	504	19/22	0.78	0.15	48,56,70,73	0
2	78M	A	501	20/22	0.82	0.16	48,57,73,74	0
2	78M	A	507	14/22	0.83	0.20	47,55,59,67	14
2	78M	A	505	22/22	0.84	0.16	55,58,62,63	0
2	78M	A	509	14/22	0.84	0.16	58,64,69,71	0
2	78M	A	506	14/22	0.85	0.15	37,43,52,59	0
3	PO4	A	508	5/5	0.90	0.10	58,60,64,65	5

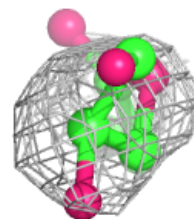
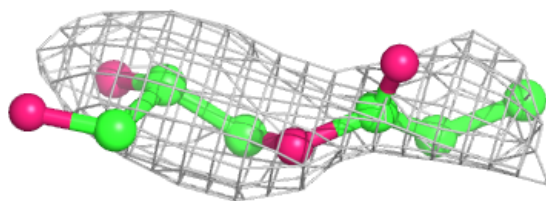
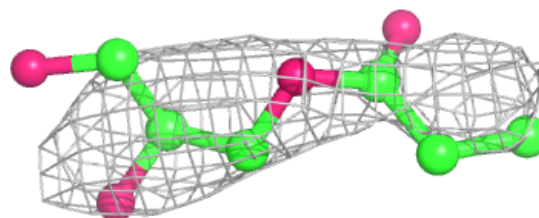
The following is a graphical depiction of the model fit to experimental electron density of all instances of the Ligand of Interest. In addition, ligands with molecular weight > 250 and outliers as shown on the geometry validation Tables will also be included. Each fit is shown from different orientation to approximate a three-dimensional view.

Electron density around 78M A 514:

$2mF_o-DF_c$ (at 0.7 rmsd) in gray
 mF_o-DF_c (at 3 rmsd) in purple (negative)
and green (positive)

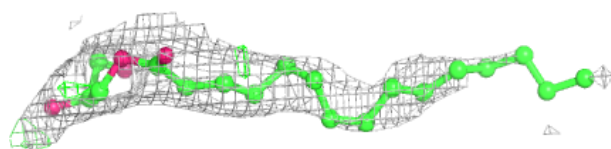
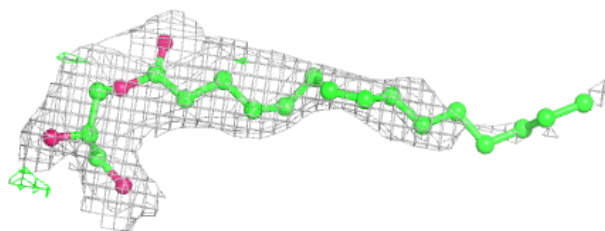
**Electron density around 78M A 513:**

$2mF_o-DF_c$ (at 0.7 rmsd) in gray
 mF_o-DF_c (at 3 rmsd) in purple (negative)
and green (positive)

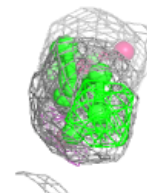
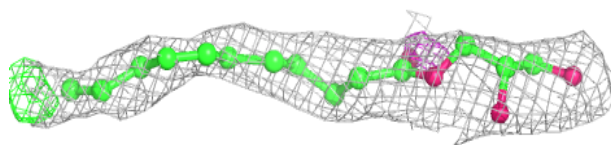
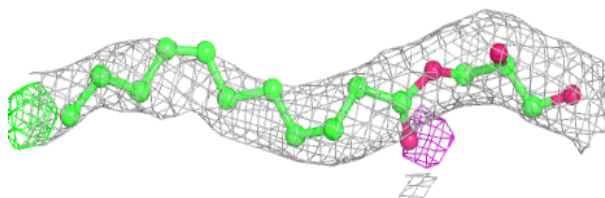


Electron density around 78M A 503:

$2mF_o-DF_c$ (at 0.7 rmsd) in gray
 mF_o-DF_c (at 3 rmsd) in purple (negative)
and green (positive)

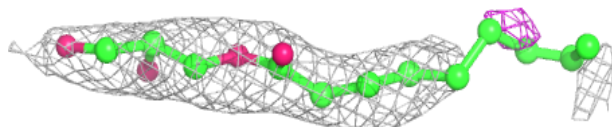
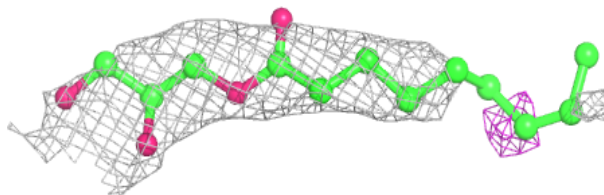
**Electron density around 78M A 510:**

$2mF_o-DF_c$ (at 0.7 rmsd) in gray
 mF_o-DF_c (at 3 rmsd) in purple (negative)
and green (positive)

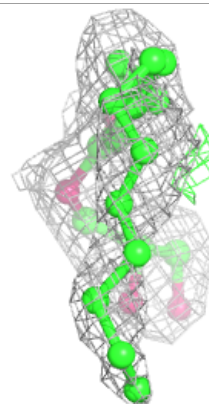
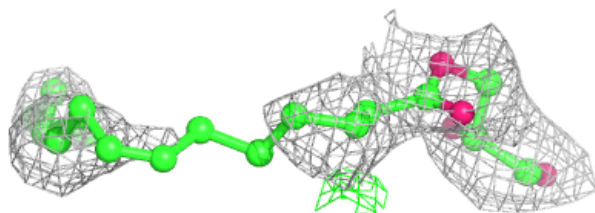
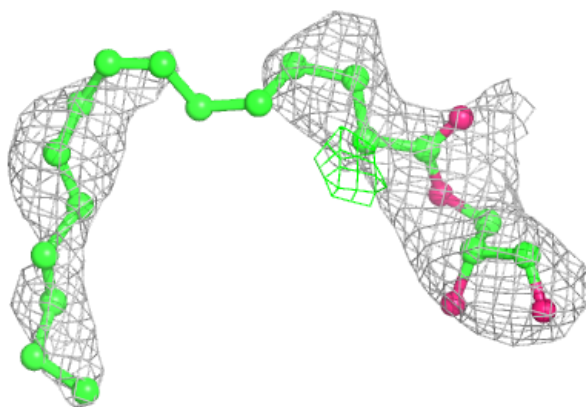


Electron density around 78M A 511:

$2mF_o-DF_c$ (at 0.7 rmsd) in gray
 mF_o-DF_c (at 3 rmsd) in purple (negative)
and green (positive)

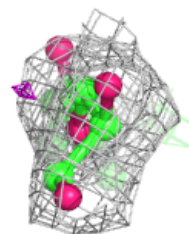
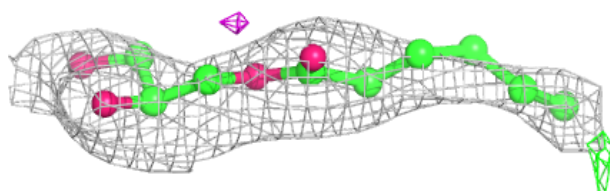
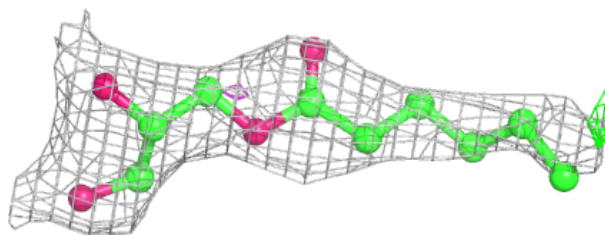
**Electron density around 78M A 515:**

$2mF_o-DF_c$ (at 0.7 rmsd) in gray
 mF_o-DF_c (at 3 rmsd) in purple (negative)
and green (positive)

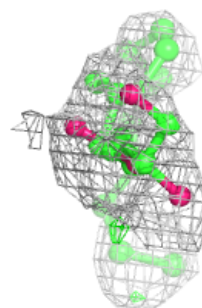
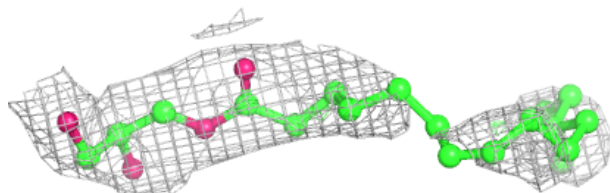
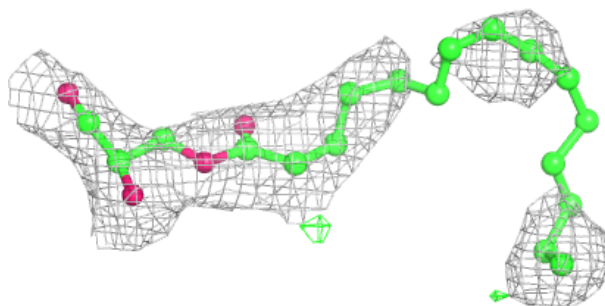


Electron density around 78M A 512:

$2mF_o-DF_c$ (at 0.7 rmsd) in gray
 mF_o-DF_c (at 3 rmsd) in purple (negative)
and green (positive)

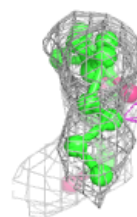
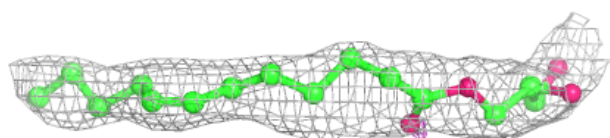
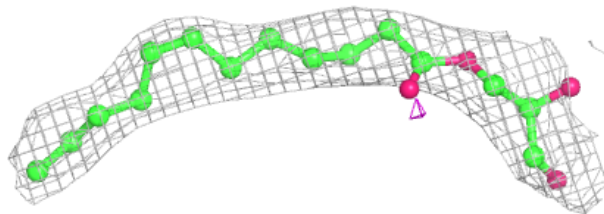
**Electron density around 78M A 502:**

$2mF_o-DF_c$ (at 0.7 rmsd) in gray
 mF_o-DF_c (at 3 rmsd) in purple (negative)
and green (positive)

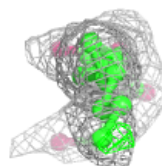
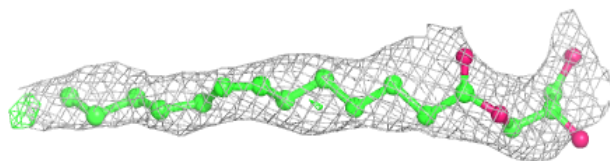
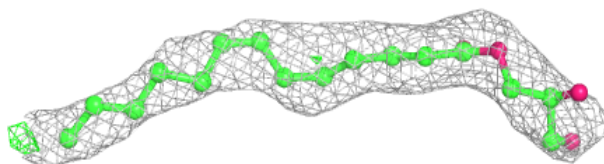


Electron density around 78M A 504:

$2mF_o-DF_c$ (at 0.7 rmsd) in gray
 mF_o-DF_c (at 3 rmsd) in purple (negative)
and green (positive)

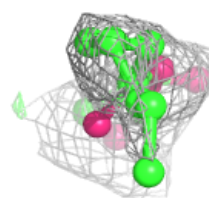
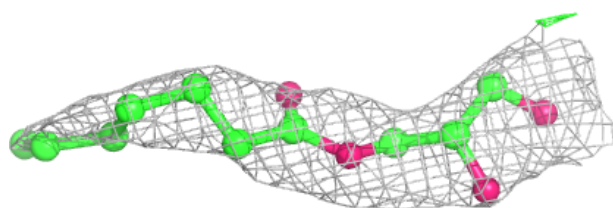
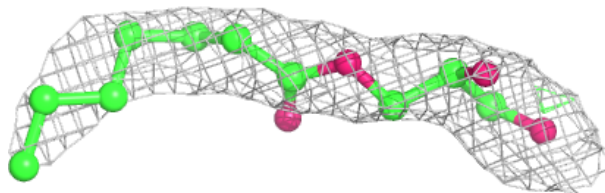
**Electron density around 78M A 501:**

$2mF_o-DF_c$ (at 0.7 rmsd) in gray
 mF_o-DF_c (at 3 rmsd) in purple (negative)
and green (positive)

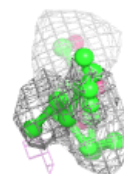
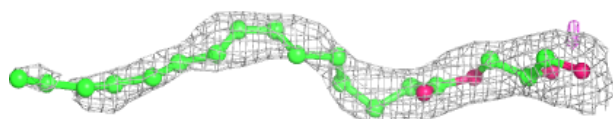
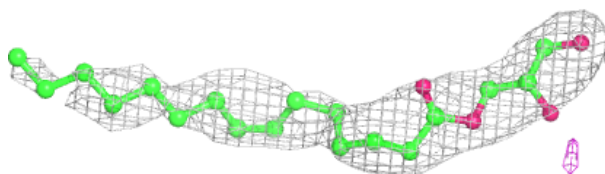


Electron density around 78M A 507:

$2mF_o-DF_c$ (at 0.7 rmsd) in gray
 mF_o-DF_c (at 3 rmsd) in purple (negative)
and green (positive)

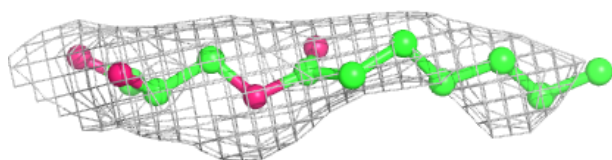
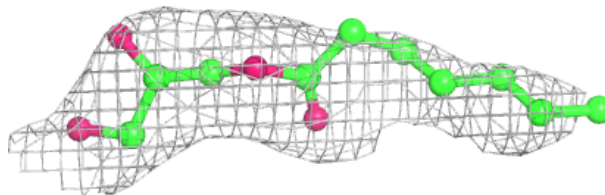
**Electron density around 78M A 505:**

$2mF_o-DF_c$ (at 0.7 rmsd) in gray
 mF_o-DF_c (at 3 rmsd) in purple (negative)
and green (positive)

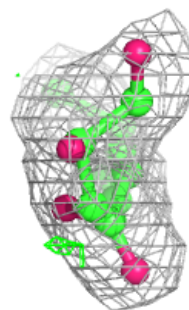
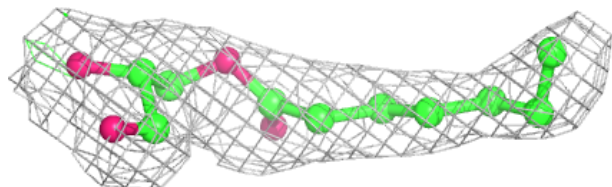
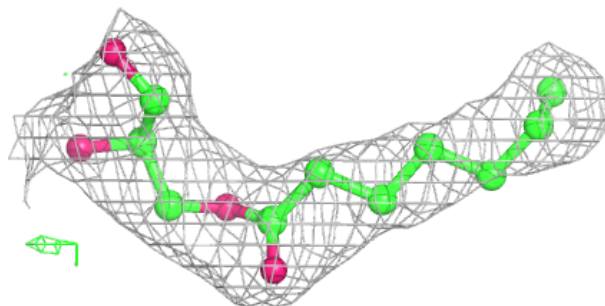


Electron density around 78M A 509:

$2mF_o-DF_c$ (at 0.7 rmsd) in gray
 mF_o-DF_c (at 3 rmsd) in purple (negative)
and green (positive)

**Electron density around 78M A 506:**

$2mF_o-DF_c$ (at 0.7 rmsd) in gray
 mF_o-DF_c (at 3 rmsd) in purple (negative)
and green (positive)



6.5 Other polymers [i](#)

There are no such residues in this entry.