



Full wwPDB X-ray Structure Validation Report ⓘ

Nov 11, 2023 – 08:55 am GMT

PDB ID : 6F5K
Title : Crystal structure of laccase from Myceliophthora thermophila
Authors : Ernst, H.A.; Joergensen, L.J.; Piontek, K.; Bukh, C.; Oestergaard, L.H.;
Larsen, S.; Bjerrum, M.J.
Deposited on : 2017-12-01
Resolution : 1.62 Å(reported)

This is a Full wwPDB X-ray Structure Validation Report for a publicly released PDB entry.

We welcome your comments at validation@mail.wwpdb.org

A user guide is available at

<https://www.wwpdb.org/validation/2017/XrayValidationReportHelp>

with specific help available everywhere you see the ⓘ symbol.

The types of validation reports are described at

<http://www.wwpdb.org/validation/2017/FAQs#types>.

The following versions of software and data (see [references ⓘ](#)) were used in the production of this report:

MolProbity : 4.02b-467
Mogul : 1.8.4, CSD as541be (2020)
Xtriage (Phenix) : 1.13
EDS : 2.36
buster-report : 1.1.7 (2018)
Percentile statistics : 20191225.v01 (using entries in the PDB archive December 25th 2019)
Refmac : 5.8.0158
CCP4 : 7.0.044 (Gargrove)
Ideal geometry (proteins) : Engh & Huber (2001)
Ideal geometry (DNA, RNA) : Parkinson et al. (1996)
Validation Pipeline (wwPDB-VP) : 2.36

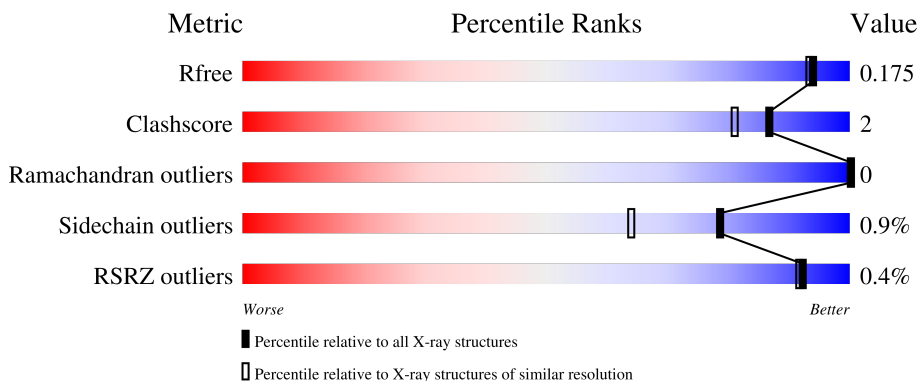
1 Overall quality at a glance

The following experimental techniques were used to determine the structure:

X-RAY DIFFRACTION

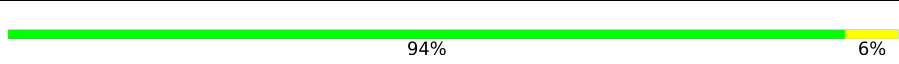
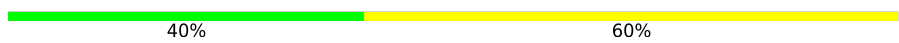



The reported resolution of this entry is 1.62 Å.

Percentile scores (ranging between 0-100) for global validation metrics of the entry are shown in the following graphic. The table shows the number of entries on which the scores are based.




Metric	Whole archive (#Entries)	Similar resolution (#Entries, resolution range(Å))
R_{free}	130704	4693 (1.64-1.60)
Clashscore	141614	5002 (1.64-1.60)
Ramachandran outliers	138981	4888 (1.64-1.60)
Sidechain outliers	138945	4887 (1.64-1.60)
RSRZ outliers	127900	4609 (1.64-1.60)

The table below summarises the geometric issues observed across the polymeric chains and their fit to the electron density. The red, orange, yellow and green segments of the lower bar indicate the fraction of residues that contain outliers for ≥ 3 , 2, 1 and 0 types of geometric quality criteria respectively. A grey segment represents the fraction of residues that are not modelled. The numeric value for each fraction is indicated below the corresponding segment, with a dot representing fractions $\leq 5\%$. The upper red bar (where present) indicates the fraction of residues that have poor fit to the electron density. The numeric value is given above the bar.

Mol	Chain	Length	Quality of chain
1	A	559	
2	B	5	
3	C	2	
4	D	6	
5	E	3	

Continued on next page...

Continued from previous page...

Mol	Chain	Length	Quality of chain
5	F	3	 100%

2 Entry composition [i](#)

There are 11 unique types of molecules in this entry. The entry contains 9558 atoms, of which 4377 are hydrogens and 0 are deuteriums.

In the tables below, the ZeroOcc column contains the number of atoms modelled with zero occupancy, the AltConf column contains the number of residues with at least one atom in alternate conformation and the Trace column contains the number of residues modelled with at most 2 atoms.

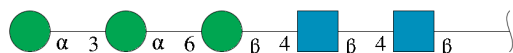
- Molecule 1 is a protein called Extracellular laccase, lcc1.

Mol	Chain	Residues	Atoms					ZeroOcc	AltConf	Trace	
			Total	C	H	N	O				S
1	A	558	8503	2771	4132	750	837	13	0	11	0

There are 6 discrepancies between the modelled and reference sequences:

Chain	Residue	Modelled	Actual	Comment	Reference
A	62	ASN	-	insertion	UNP G2QG31
A	63	SER	-	insertion	UNP G2QG31
A	64	ILE	-	insertion	UNP G2QG31
A	65	ILE	-	insertion	UNP G2QG31
A	66	GLY	ARG	conflict	UNP G2QG31
A	545	ARG	HIS	conflict	UNP G2QG31

- Molecule 2 is an oligosaccharide called alpha-D-mannopyranose-(1-3)-alpha-D-mannopyranose-(1-6)-beta-D-mannopyranose-(1-4)-2-acetamido-2-deoxy-beta-D-glucopyranose-(1-4)-2-acetamido-2-deoxy-beta-D-glucopyranose.



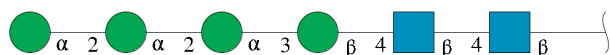
Mol	Chain	Residues	Atoms					ZeroOcc	AltConf	Trace
			Total	C	H	N	O			
2	B	5	113	34	52	2	25	0	0	0

- Molecule 3 is an oligosaccharide called 2-acetamido-2-deoxy-beta-D-glucopyranose-(1-4)-2-acetamido-2-deoxy-beta-D-glucopyranose.



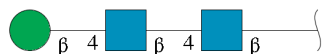
Mol	Chain	Residues	Atoms					ZeroOcc	AltConf	Trace
			Total	C	H	N	O			
3	C	2	53	16	25	2	10	0	0	0

- Molecule 4 is an oligosaccharide called alpha-D-mannopyranose-(1-2)-alpha-D-mannopyranose-(1-2)-alpha-D-mannopyranose-(1-3)-beta-D-mannopyranose-(1-4)-2-acetamido-2-deoxy-beta-D-glucopyranose-(1-4)-2-acetamido-2-deoxy-beta-D-glucopyranose.



Mol	Chain	Residues	Atoms					ZeroOcc	AltConf	Trace
			Total	C	H	N	O			
4	D	6	133	40	61	2	30	0	0	0

- Molecule 5 is an oligosaccharide called beta-D-mannopyranose-(1-4)-2-acetamido-2-deoxy-beta-D-glucopyranose-(1-4)-2-acetamido-2-deoxy-beta-D-glucopyranose.



Mol	Chain	Residues	Atoms					ZeroOcc	AltConf	Trace
			Total	C	H	N	O			
5	E	3	73	22	34	2	15	0	0	0
5	F	3	73	22	34	2	15	0	0	0

- Molecule 6 is COPPER (II) ION (three-letter code: CU) (formula: Cu).

Mol	Chain	Residues	Atoms		ZeroOcc	AltConf
6	A	4	Total	Cu	0	0
			4	4		

- Molecule 7 is CALCIUM ION (three-letter code: CA) (formula: Ca).

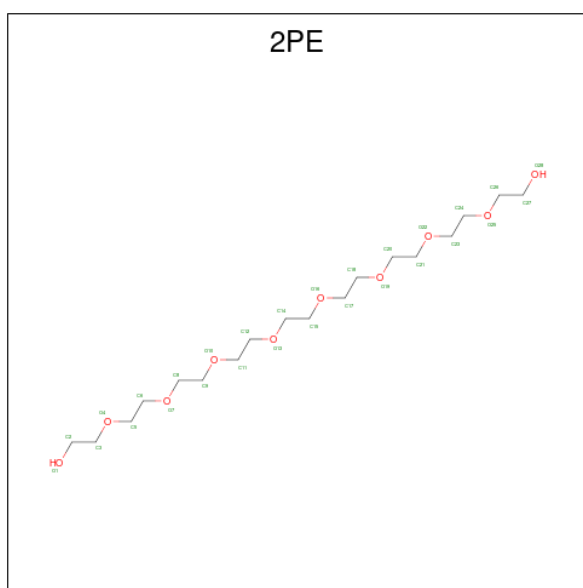
Mol	Chain	Residues	Atoms		ZeroOcc	AltConf
7	A	2	Total	Ca	0	0
			2	2		

- Molecule 8 is 2-acetamido-2-deoxy-beta-D-glucopyranose (three-letter code: NAG) (formula: C₈H₁₅NO₆).



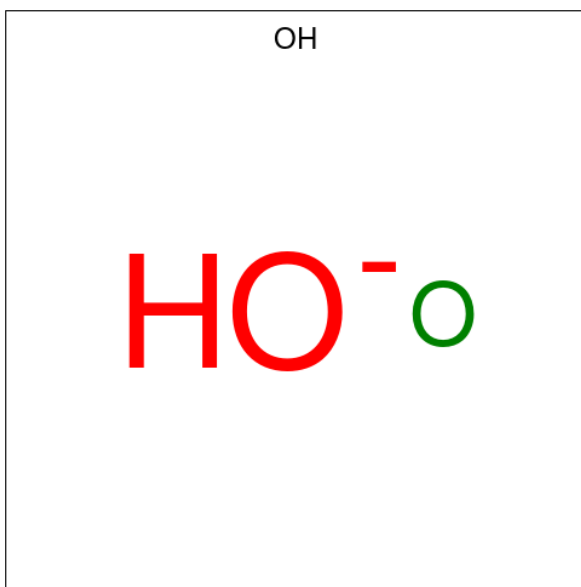
Mol	Chain	Residues	Atoms				ZeroOcc	AltConf		
			Total	C	H	N			O	
8	A	1	Total	27	8	13	1	5	0	0
8	A	1	Total	27	8	13	1	5	0	0

- Molecule 9 is NONAETHYLENE GLYCOL (three-letter code: 2PE) (formula: $C_{18}H_{38}O_{10}$).



Mol	Chain	Residues	Atoms				ZeroOcc	AltConf	
			Total	C	H	O			
9	A	1	Total	23	6	13	4	0	0

- Molecule 10 is HYDROXIDE ION (three-letter code: OH) (formula: HO).



Mol	Chain	Residues	Atoms	ZeroOcc	AltConf
10	A	1	Total O 1 1	0	0

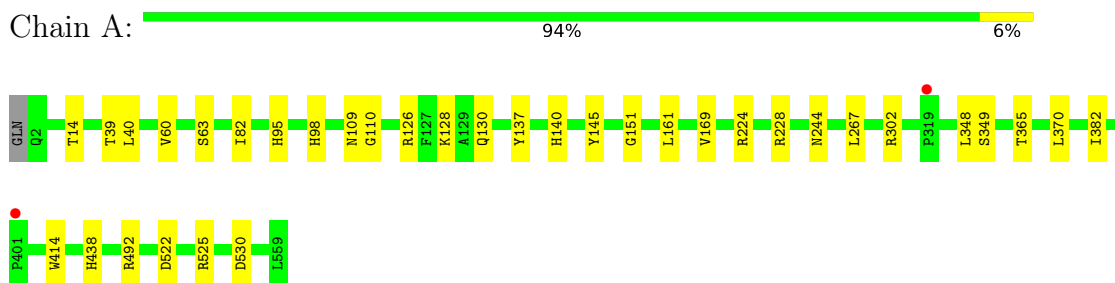
- Molecule 11 is water.

Mol	Chain	Residues	Atoms	ZeroOcc	AltConf
11	A	526	Total O 526 526	0	0

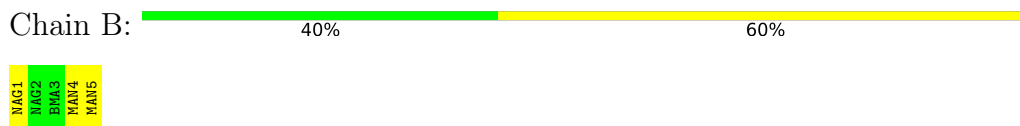
3 Residue-property plots [i](#)

These plots are drawn for all protein, RNA, DNA and oligosaccharide chains in the entry. The first graphic for a chain summarises the proportions of the various outlier classes displayed in the second graphic. The second graphic shows the sequence view annotated by issues in geometry and electron density. Residues are color-coded according to the number of geometric quality criteria for which they contain at least one outlier: green = 0, yellow = 1, orange = 2 and red = 3 or more. A red dot above a residue indicates a poor fit to the electron density ($RSRZ > 2$). Stretches of 2 or more consecutive residues without any outlier are shown as a green connector. Residues present in the sample, but not in the model, are shown in grey.

- Molecule 1: Extracellular laccase, lcc1



- Molecule 2: alpha-D-mannopyranose-(1-3)-alpha-D-mannopyranose-(1-6)-beta-D-mannopyranose-(1-4)-2-acetamido-2-deoxy-beta-D-glucopyranose-(1-4)-2-acetamido-2-deoxy-beta-D-glucopyranose




- Molecule 3: 2-acetamido-2-deoxy-beta-D-glucopyranose-(1-4)-2-acetamido-2-deoxy-beta-D-glucopyranose



- Molecule 4: alpha-D-mannopyranose-(1-2)-alpha-D-mannopyranose-(1-2)-alpha-D-mannopyranose-(1-3)-beta-D-mannopyranose-(1-4)-2-acetamido-2-deoxy-beta-D-glucopyranose-(1-4)-2-acetamido-2-deoxy-beta-D-glucopyranose



- Molecule 5: beta-D-mannopyranose-(1-4)-2-acetamido-2-deoxy-beta-D-glucopyranose-(1-4)-2-acetamido-2-deoxy-beta-D-glucopyranose

Chain E:  33% 67%

MAG1
MAG2
BOM3

- Molecule 5: beta-D-mannopyranose-(1-4)-2-acetamido-2-deoxy-beta-D-glucopyranose-(1-4)-2-acetamido-2-deoxy-beta-D-glucopyranose

Chain F:  100%

MAG1
MAG2
BOM3

4 Data and refinement statistics

Property	Value	Source
Space group	C 2 2 21	Depositor
Cell constants a, b, c, α , β , γ	67.45Å 128.43Å 163.62Å 90.00° 90.00° 90.00°	Depositor
Resolution (Å)	48.23 – 1.62 48.23 – 1.62	Depositor EDS
% Data completeness (in resolution range)	99.4 (48.23-1.62) 93.6 (48.23-1.62)	Depositor EDS
R_{merge}	0.11	Depositor
R_{sym}	(Not available)	Depositor
$\langle I/\sigma(I) \rangle$ ¹	0.84 (at 1.62Å)	Xtrriage
Refinement program	PHENIX	Depositor
R, R_{free}	0.150 , 0.189 0.152 , 0.175	Depositor DCC
R_{free} test set	4507 reflections (5.01%)	wwPDB-VP
Wilson B-factor (Å ²)	16.2	Xtrriage
Anisotropy	0.479	Xtrriage
Bulk solvent k_{sol} (e/Å ³), B_{sol} (Å ²)	0.41 , 47.2	EDS
L-test for twinning ²	$\langle L \rangle = 0.48$, $\langle L^2 \rangle = 0.31$	Xtrriage
Estimated twinning fraction	No twinning to report.	Xtrriage
F_o, F_c correlation	0.97	EDS
Total number of atoms	9558	wwPDB-VP
Average B, all atoms (Å ²)	26.0	wwPDB-VP

Xtrriage's analysis on translational NCS is as follows: *The largest off-origin peak in the Patterson function is 4.03% of the height of the origin peak. No significant pseudotranslation is detected.*

¹Intensities estimated from amplitudes.

²Theoretical values of $\langle |L| \rangle$, $\langle L^2 \rangle$ for acentric reflections are 0.5, 0.333 respectively for untwinned datasets, and 0.375, 0.2 for perfectly twinned datasets.

5 Model quality [i](#)

5.1 Standard geometry [i](#)

Bond lengths and bond angles in the following residue types are not validated in this section: OH, BMA, 2PE, OHI, MAN, NAG, CU, CA

The Z score for a bond length (or angle) is the number of standard deviations the observed value is removed from the expected value. A bond length (or angle) with $|Z| > 5$ is considered an outlier worth inspection. RMSZ is the root-mean-square of all Z scores of the bond lengths (or angles).

Mol	Chain	Bond lengths		Bond angles	
		RMSZ	# $ Z > 5$	RMSZ	# $ Z > 5$
1	A	0.35	0/4525	0.63	2/6205 (0.0%)

Chiral center outliers are detected by calculating the chiral volume of a chiral center and verifying if the center is modelled as a planar moiety or with the opposite hand. A planarity outlier is detected by checking planarity of atoms in a peptide group, atoms in a mainchain group or atoms of a sidechain that are expected to be planar.

Mol	Chain	#Chirality outliers	#Planarity outliers
1	A	0	1

There are no bond length outliers.

All (2) bond angle outliers are listed below:

Mol	Chain	Res	Type	Atoms	Z	Observed($^{\circ}$)	Ideal($^{\circ}$)
1	A	302	ARG	NE-CZ-NH1	5.15	122.88	120.30
1	A	145	TYR	CA-CB-CG	5.12	123.12	113.40

There are no chirality outliers.

All (1) planarity outliers are listed below:

Mol	Chain	Res	Type	Group
1	A	438	HIS	Peptide

5.2 Too-close contacts [i](#)

In the following table, the Non-H and H(model) columns list the number of non-hydrogen atoms and hydrogen atoms in the chain respectively. The H(added) column lists the number of hydrogen atoms added and optimized by MolProbity. The Clashes column lists the number of clashes within the asymmetric unit, whereas Symm-Clashes lists symmetry-related clashes.

Mol	Chain	Non-H	H(model)	H(added)	Clashes	Symm-Clashes
1	A	4371	4132	4122	19	0
2	B	61	52	52	0	0
3	C	28	25	25	0	0
4	D	72	61	61	0	0
5	E	39	34	34	0	0
5	F	39	34	34	0	0
6	A	4	0	0	0	0
7	A	2	0	0	0	0
8	A	28	26	26	0	0
9	A	10	13	13	0	0
10	A	1	0	0	0	0
11	A	526	0	0	6	1
All	All	5181	4377	4367	19	1

The all-atom clashscore is defined as the number of clashes found per 1000 atoms (including hydrogen atoms). The all-atom clashscore for this structure is 2.

All (19) close contacts within the same asymmetric unit are listed below, sorted by their clash magnitude.

Atom-1	Atom-2	Interatomic distance (Å)	Clash overlap (Å)
1:A:530[B]:ASP:OD2	11:A:701:HOH:O	1.68	1.10
1:A:126:ARG:NH2	11:A:704:HOH:O	2.21	0.73
1:A:63:SER:O	11:A:702:HOH:O	2.09	0.69
1:A:522:ASP:OD1	1:A:525:ARG:NH2	2.28	0.67
1:A:530[B]:ASP:OD1	11:A:703:HOH:O	2.18	0.56
1:A:14[B]:THR:HG21	11:A:1071:HOH:O	2.12	0.50
1:A:161:LEU:HG	1:A:224:ARG:HH12	1.78	0.49
1:A:169:VAL:HA	1:A:228:ARG:HB2	1.95	0.48
1:A:39[B]:THR:HG22	1:A:82:ILE:HB	1.98	0.46
1:A:365:THR:HA	1:A:370:LEU:O	2.17	0.44
1:A:128:LYS:HG2	1:A:130:GLN:CG	2.47	0.44
1:A:95:HIS:CD2	1:A:95:HIS:C	2.91	0.43
1:A:137:TYR:CZ	1:A:151:GLY:HA3	2.53	0.43
1:A:128:LYS:CG	1:A:130:GLN:HG3	2.49	0.43
1:A:414:TRP:CZ2	1:A:492:ARG:HD3	2.54	0.43
1:A:40[A]:LEU:CD2	1:A:60:VAL:HG22	2.50	0.42
1:A:244:ASN:ND2	11:A:723:HOH:O	2.53	0.41
1:A:110:GLY:HA3	1:A:382:ILE:HD13	2.03	0.41
1:A:348:LEU:HD23	1:A:348:LEU:HA	1.88	0.40

All (1) symmetry-related close contacts are listed below. The label for Atom-2 includes the symmetry operator and encoded unit-cell translations to be applied.

Atom-1	Atom-2	Interatomic distance (Å)	Clash overlap (Å)
11:A:841:HOH:O	11:A:1000:HOH:O[3_554]	2.09	0.11

5.3 Torsion angles [i](#)

5.3.1 Protein backbone [i](#)

In the following table, the Percentiles column shows the percent Ramachandran outliers of the chain as a percentile score with respect to all X-ray entries followed by that with respect to entries of similar resolution.

The Analysed column shows the number of residues for which the backbone conformation was analysed, and the total number of residues.

Mol	Chain	Analysed	Favoured	Allowed	Outliers	Percentiles
1	A	566/559 (101%)	552 (98%)	14 (2%)	0	100 100

There are no Ramachandran outliers to report.

5.3.2 Protein sidechains [i](#)

In the following table, the Percentiles column shows the percent sidechain outliers of the chain as a percentile score with respect to all X-ray entries followed by that with respect to entries of similar resolution.

The Analysed column shows the number of residues for which the sidechain conformation was analysed, and the total number of residues.

Mol	Chain	Analysed	Rotameric	Outliers	Percentiles
1	A	473/465 (102%)	469 (99%)	4 (1%)	81 69

All (4) residues with a non-rotameric sidechain are listed below:

Mol	Chain	Res	Type
1	A	109	ASN
1	A	140	HIS
1	A	267	LEU
1	A	349	SER

Sometimes sidechains can be flipped to improve hydrogen bonding and reduce clashes. There are no such sidechains identified.

5.3.3 RNA [i](#)

There are no RNA molecules in this entry.

5.4 Non-standard residues in protein, DNA, RNA chains [i](#)

1 non-standard protein/DNA/RNA residue is modelled in this entry.

In the following table, the Counts columns list the number of bonds (or angles) for which Mogul statistics could be retrieved, the number of bonds (or angles) that are observed in the model and the number of bonds (or angles) that are defined in the Chemical Component Dictionary. The Link column lists molecule types, if any, to which the group is linked. The Z score for a bond length (or angle) is the number of standard deviations the observed value is removed from the expected value. A bond length (or angle) with $|Z| > 2$ is considered an outlier worth inspection. RMSZ is the root-mean-square of all Z scores of the bond lengths (or angles).

Mol	Type	Chain	Res	Link	Bond lengths			Bond angles		
					Counts	RMSZ	# Z > 2	Counts	RMSZ	# Z > 2
1	OHI	A	98	1	8,11,12	1.81	2 (25%)	5,14,16	1.10	0

In the following table, the Chirals column lists the number of chiral outliers, the number of chiral centers analysed, the number of these observed in the model and the number defined in the Chemical Component Dictionary. Similar counts are reported in the Torsion and Rings columns. '-' means no outliers of that kind were identified.

Mol	Type	Chain	Res	Link	Chirals	Torsions	Rings
1	OHI	A	98	1	-	0/3/15/17	0/1/1/1

All (2) bond length outliers are listed below:

Mol	Chain	Res	Type	Atoms	Z	Observed(Å)	Ideal(Å)
1	A	98	OHI	CE1-NE2	3.70	1.51	1.39
1	A	98	OHI	CE1-ND1	2.81	1.48	1.39

There are no bond angle outliers.

There are no chirality outliers.

There are no torsion outliers.

There are no ring outliers.

No monomer is involved in short contacts.

5.5 Carbohydrates i

19 monosaccharides are modelled in this entry.

In the following table, the Counts columns list the number of bonds (or angles) for which Mogul statistics could be retrieved, the number of bonds (or angles) that are observed in the model and the number of bonds (or angles) that are defined in the Chemical Component Dictionary. The Link column lists molecule types, if any, to which the group is linked. The Z score for a bond length (or angle) is the number of standard deviations the observed value is removed from the expected value. A bond length (or angle) with $|Z| > 2$ is considered an outlier worth inspection. RMSZ is the root-mean-square of all Z scores of the bond lengths (or angles).

Mol	Type	Chain	Res	Link	Bond lengths			Bond angles		
					Counts	RMSZ	# Z > 2	Counts	RMSZ	# Z > 2
2	NAG	B	1	1,2	14,14,15	0.35	0	17,19,21	0.67	1 (5%)
2	NAG	B	2	2	14,14,15	0.41	0	17,19,21	0.76	0
2	BMA	B	3	2	11,11,12	0.67	0	15,15,17	0.77	0
2	MAN	B	4	2	11,11,12	0.77	0	15,15,17	1.01	2 (13%)
2	MAN	B	5	2	11,11,12	1.11	0	15,15,17	1.52	2 (13%)
3	NAG	C	1	1,3	14,14,15	0.30	0	17,19,21	0.85	1 (5%)
3	NAG	C	2	3	14,14,15	0.38	0	17,19,21	0.47	0
4	NAG	D	1	4,1	14,14,15	0.46	0	17,19,21	0.61	0
4	NAG	D	2	4	14,14,15	0.84	1 (7%)	17,19,21	0.54	0
4	BMA	D	3	4	11,11,12	0.95	0	15,15,17	1.43	2 (13%)
4	MAN	D	4	4	11,11,12	0.59	0	15,15,17	1.19	2 (13%)
4	MAN	D	5	4	11,11,12	0.69	0	15,15,17	1.05	2 (13%)
4	MAN	D	6	4	11,11,12	0.84	0	15,15,17	1.03	2 (13%)
5	NAG	E	1	1,5	14,14,15	0.60	1 (7%)	17,19,21	0.65	0
5	NAG	E	2	5	14,14,15	0.60	1 (7%)	17,19,21	0.52	0
5	BMA	E	3	5	11,11,12	0.55	0	15,15,17	0.85	0
5	NAG	F	1	1,5	14,14,15	0.51	0	17,19,21	0.48	0
5	NAG	F	2	5	14,14,15	0.30	0	17,19,21	0.46	0
5	BMA	F	3	5	11,11,12	0.77	0	15,15,17	0.64	0

In the following table, the Chirals column lists the number of chiral outliers, the number of chiral centers analysed, the number of these observed in the model and the number defined in the Chemical Component Dictionary. Similar counts are reported in the Torsion and Rings columns. ^{1,2} means no outliers of that kind were identified.

Mol	Type	Chain	Res	Link	Chirals	Torsions	Rings
2	NAG	B	1	1,2	-	0/6/23/26	0/1/1/1
2	NAG	B	2	2	-	0/6/23/26	0/1/1/1
2	BMA	B	3	2	-	0/2/19/22	0/1/1/1

Continued on next page...

Continued from previous page...

Mol	Type	Chain	Res	Link	Chirals	Torsions	Rings
2	MAN	B	4	2	-	0/2/19/22	0/1/1/1
2	MAN	B	5	2	-	0/2/19/22	0/1/1/1
3	NAG	C	1	1,3	-	0/6/23/26	0/1/1/1
3	NAG	C	2	3	-	0/6/23/26	0/1/1/1
4	NAG	D	1	4,1	-	0/6/23/26	0/1/1/1
4	NAG	D	2	4	-	0/6/23/26	0/1/1/1
4	BMA	D	3	4	-	2/2/19/22	0/1/1/1
4	MAN	D	4	4	-	0/2/19/22	0/1/1/1
4	MAN	D	5	4	-	0/2/19/22	0/1/1/1
4	MAN	D	6	4	-	2/2/19/22	0/1/1/1
5	NAG	E	1	1,5	-	2/6/23/26	0/1/1/1
5	NAG	E	2	5	-	0/6/23/26	0/1/1/1
5	BMA	E	3	5	-	2/2/19/22	0/1/1/1
5	NAG	F	1	1,5	-	0/6/23/26	0/1/1/1
5	NAG	F	2	5	-	0/6/23/26	0/1/1/1
5	BMA	F	3	5	-	0/2/19/22	0/1/1/1

All (3) bond length outliers are listed below:

Mol	Chain	Res	Type	Atoms	Z	Observed(Å)	Ideal(Å)
4	D	2	NAG	O5-C1	-3.05	1.38	1.43
5	E	1	NAG	O5-C1	-2.19	1.40	1.43
5	E	2	NAG	O5-C1	-2.18	1.40	1.43

All (14) bond angle outliers are listed below:

Mol	Chain	Res	Type	Atoms	Z	Observed(°)	Ideal(°)
2	B	5	MAN	C2-C3-C4	3.86	117.57	110.89
4	D	3	BMA	C1-O5-C5	3.58	117.04	112.19
4	D	4	MAN	O2-C2-C3	-3.18	103.77	110.14
4	D	5	MAN	C1-O5-C5	3.08	116.36	112.19
4	D	3	BMA	C3-C4-C5	2.88	115.37	110.24
2	B	5	MAN	C3-C4-C5	2.74	115.12	110.24
3	C	1	NAG	O4-C4-C5	-2.71	102.57	109.30
4	D	4	MAN	C1-O5-C5	2.51	115.59	112.19
4	D	6	MAN	C1-O5-C5	2.37	115.40	112.19
4	D	6	MAN	O2-C2-C3	-2.36	105.42	110.14
2	B	4	MAN	O2-C2-C3	-2.26	105.61	110.14
2	B	1	NAG	C1-O5-C5	2.23	115.21	112.19
4	D	5	MAN	O2-C2-C3	-2.01	106.11	110.14
2	B	4	MAN	C1-O5-C5	2.01	114.91	112.19

There are no chirality outliers.

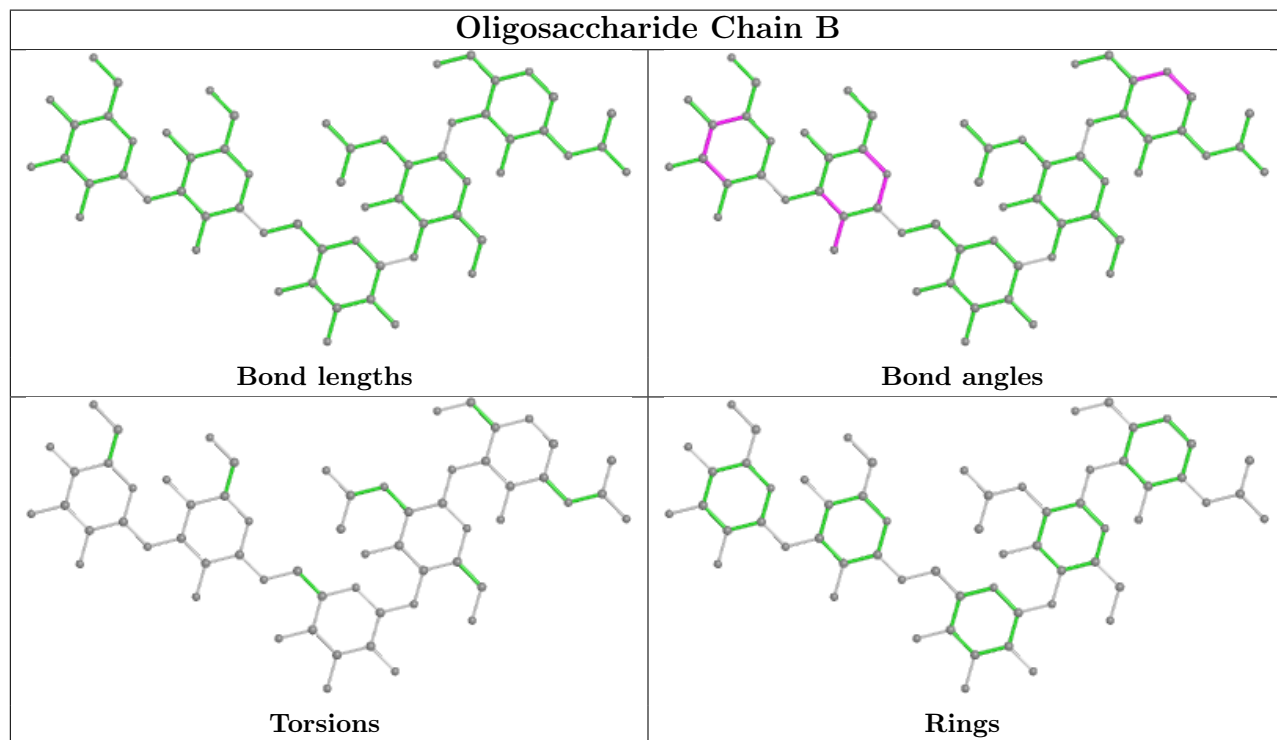
All (8) torsion outliers are listed below:

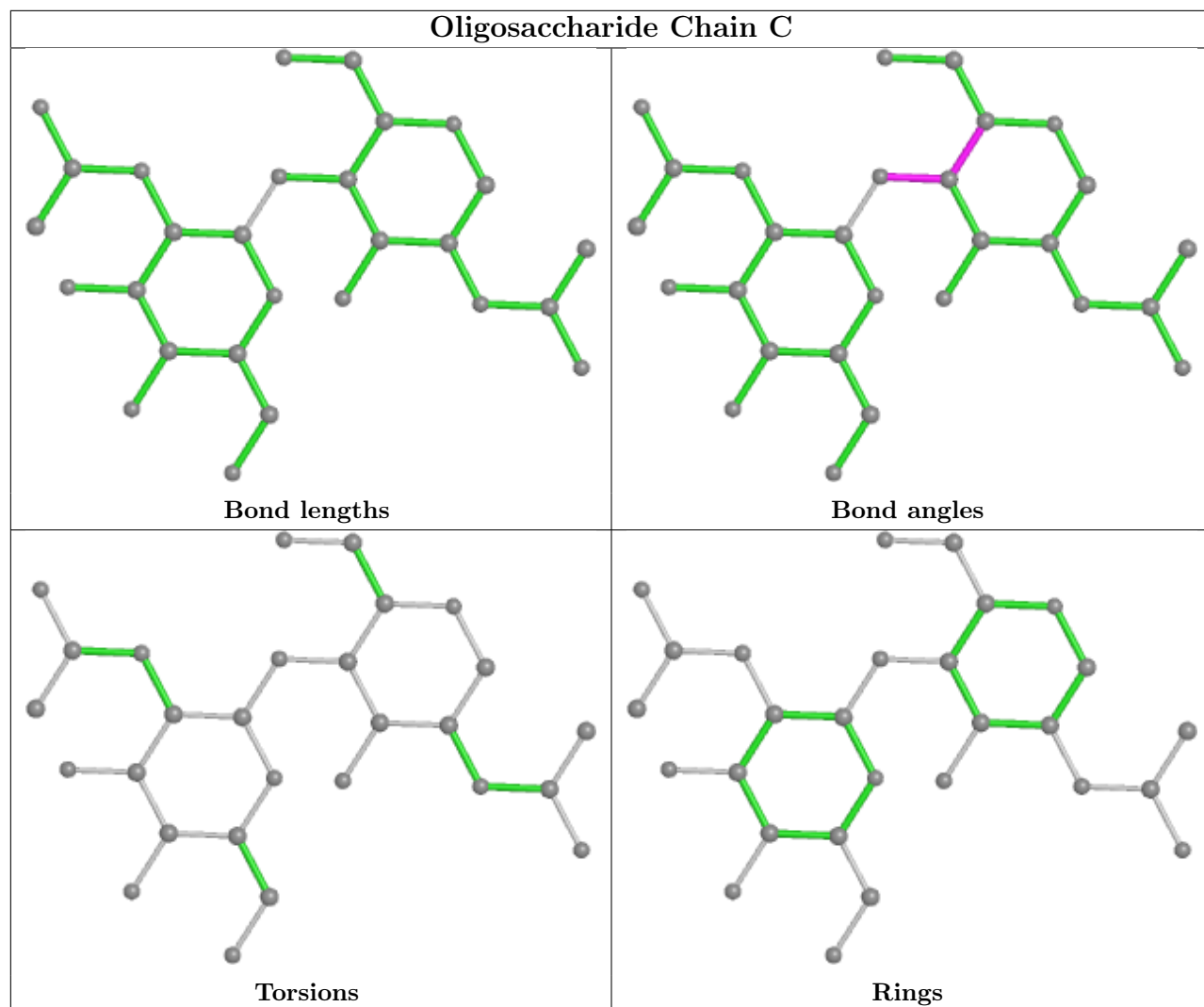
Mol	Chain	Res	Type	Atoms
4	D	3	BMA	C4-C5-C6-O6
4	D	3	BMA	O5-C5-C6-O6
4	D	6	MAN	O5-C5-C6-O6
4	D	6	MAN	C4-C5-C6-O6
5	E	3	BMA	O5-C5-C6-O6
5	E	3	BMA	C4-C5-C6-O6
5	E	1	NAG	C4-C5-C6-O6
5	E	1	NAG	O5-C5-C6-O6

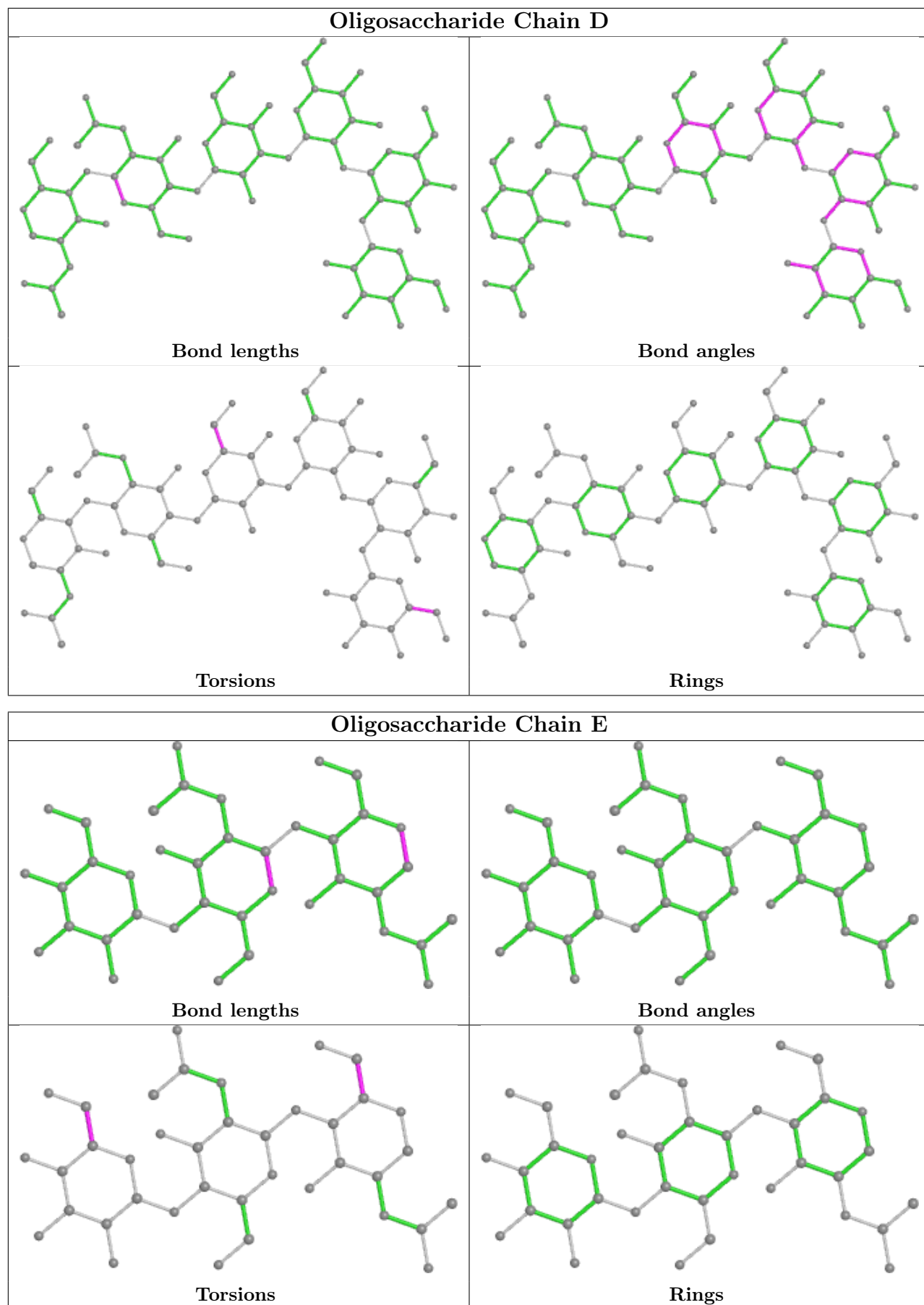
There are no ring outliers.

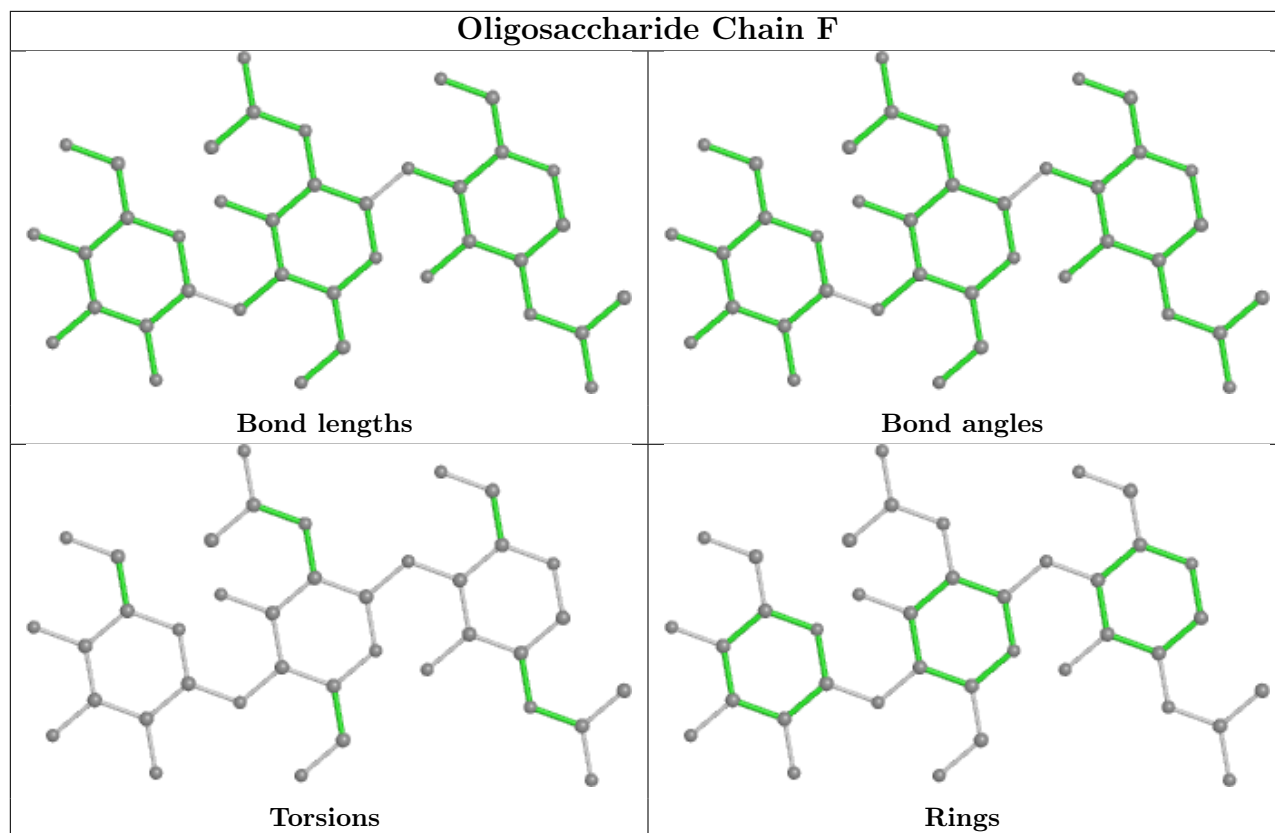
No monomer is involved in short contacts.

The following is a two-dimensional graphical depiction of Mogul quality analysis of bond lengths, bond angles, torsion angles, and ring geometry for oligosaccharide.









5.6 Ligand geometry [i](#)

Of 10 ligands modelled in this entry, 6 are monoatomic and 1 is modelled with single atom - leaving 3 for Mogul analysis.

In the following table, the Counts columns list the number of bonds (or angles) for which Mogul statistics could be retrieved, the number of bonds (or angles) that are observed in the model and the number of bonds (or angles) that are defined in the Chemical Component Dictionary. The Link column lists molecule types, if any, to which the group is linked. The Z score for a bond length (or angle) is the number of standard deviations the observed value is removed from the expected value. A bond length (or angle) with $|Z| > 2$ is considered an outlier worth inspection. RMSZ is the root-mean-square of all Z scores of the bond lengths (or angles).

Mol	Type	Chain	Res	Link	Bond lengths			Bond angles		
					Counts	RMSZ	$\# Z > 2$	Counts	RMSZ	$\# Z > 2$
9	2PE	A	628	-	9,9,27	0.53	0	8,8,26	0.30	0
8	NAG	A	626	1	14,14,15	0.21	0	17,19,21	0.56	0
8	NAG	A	627	1	14,14,15	0.29	0	17,19,21	0.46	0

In the following table, the Chirals column lists the number of chiral outliers, the number of chiral centers analysed, the number of these observed in the model and the number defined in the Chemical Component Dictionary. Similar counts are reported in the Torsion and Rings columns. '-' means no outliers of that kind were identified.

Mol	Type	Chain	Res	Link	Chirals	Torsions	Rings
9	2PE	A	628	-	-	4/7/7/25	-
8	NAG	A	626	1	-	0/6/23/26	0/1/1/1
8	NAG	A	627	1	-	0/6/23/26	0/1/1/1

There are no bond length outliers.

There are no bond angle outliers.

There are no chirality outliers.

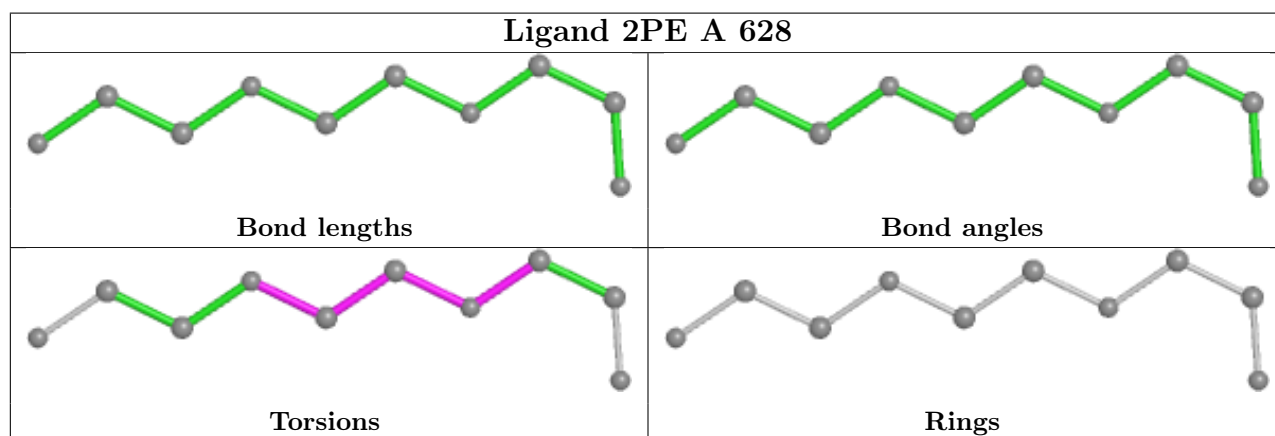
All (4) torsion outliers are listed below:

Mol	Chain	Res	Type	Atoms
9	A	628	2PE	C6-C5-O4-C3
9	A	628	2PE	C5-C6-O7-C8
9	A	628	2PE	O4-C5-C6-O7
9	A	628	2PE	C2-C3-O4-C5

There are no ring outliers.

No monomer is involved in short contacts.

The following is a two-dimensional graphical depiction of Mogul quality analysis of bond lengths, bond angles, torsion angles, and ring geometry for all instances of the Ligand of Interest. In addition, ligands with molecular weight > 250 and outliers as shown on the validation Tables will also be included. For torsion angles, if less than 5% of the Mogul distribution of torsion angles is within 10 degrees of the torsion angle in question, then that torsion angle is considered an outlier. Any bond that is central to one or more torsion angles identified as an outlier by Mogul will be highlighted in the graph. For rings, the root-mean-square deviation (RMSD) between the ring in question and similar rings identified by Mogul is calculated over all ring torsion angles. If the average RMSD is greater than 60 degrees and the minimal RMSD between the ring in question and any Mogul-identified rings is also greater than 60 degrees, then that ring is considered an outlier. The outliers are highlighted in purple. The color gray indicates Mogul did not find sufficient equivalents in the CSD to analyse the geometry.



5.7 Other polymers [i](#)

There are no such residues in this entry.

5.8 Polymer linkage issues [i](#)

There are no chain breaks in this entry.

6 Fit of model and data [i](#)

6.1 Protein, DNA and RNA chains [i](#)

In the following table, the column labelled '#RSRZ > 2' contains the number (and percentage) of RSRZ outliers, followed by percent RSRZ outliers for the chain as percentile scores relative to all X-ray entries and entries of similar resolution. The OWAB column contains the minimum, median, 95th percentile and maximum values of the occupancy-weighted average B-factor per residue. The column labelled 'Q < 0.9' lists the number of (and percentage) of residues with an average occupancy less than 0.9.

Mol	Chain	Analysed	<RSRZ>	#RSRZ>2	OWAB(Å ²)	Q<0.9
1	A	557/559 (99%)	-0.25	2 (0%) 92 92	11, 19, 40, 66	0

All (2) RSRZ outliers are listed below:

Mol	Chain	Res	Type	RSRZ
1	A	319	PRO	2.2
1	A	401	PRO	2.1

6.2 Non-standard residues in protein, DNA, RNA chains [i](#)

In the following table, the Atoms column lists the number of modelled atoms in the group and the number defined in the chemical component dictionary. The B-factors column lists the minimum, median, 95th percentile and maximum values of B factors of atoms in the group. The column labelled 'Q < 0.9' lists the number of atoms with occupancy less than 0.9.

Mol	Type	Chain	Res	Atoms	RSCC	RSR	B-factors(Å ²)	Q<0.9
1	OHI	A	98	11/12	0.94	0.13	15,29,42,55	0

6.3 Carbohydrates [i](#)

In the following table, the Atoms column lists the number of modelled atoms in the group and the number defined in the chemical component dictionary. The B-factors column lists the minimum, median, 95th percentile and maximum values of B factors of atoms in the group. The column labelled 'Q < 0.9' lists the number of atoms with occupancy less than 0.9.

Mol	Type	Chain	Res	Atoms	RSCC	RSR	B-factors(Å ²)	Q<0.9
5	BMA	E	3	11/12	0.63	0.23	66,90,108,130	0
2	MAN	B	5	11/12	0.73	0.23	36,86,120,138	0
5	BMA	F	3	11/12	0.83	0.21	46,72,104,122	0
2	BMA	B	3	11/12	0.86	0.18	33,50,78,94	0

Continued on next page...

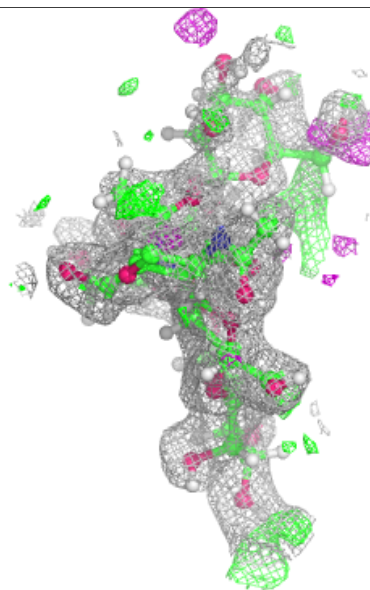
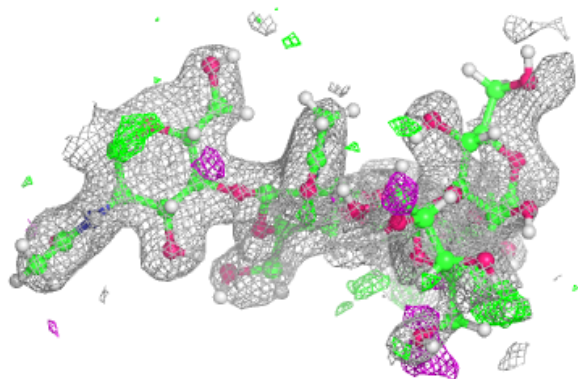
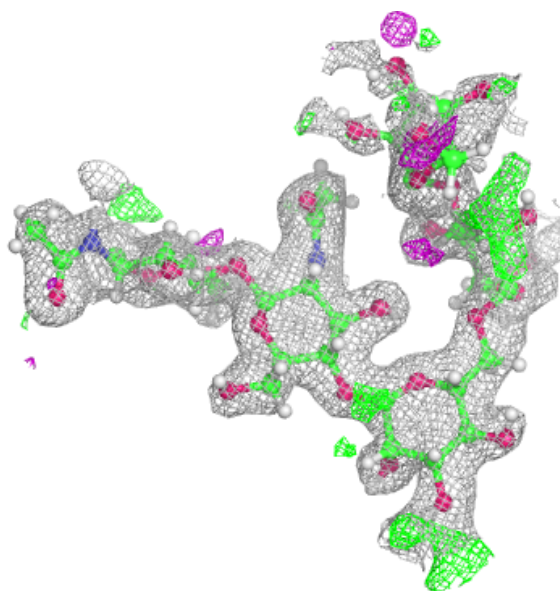
Continued from previous page...

Mol	Type	Chain	Res	Atoms	RSCC	RSR	B-factors(\AA^2)	Q<0.9
4	MAN	D	6	11/12	0.86	0.20	34,60,80,99	0
2	MAN	B	4	11/12	0.87	0.14	35,78,114,137	0
4	BMA	D	3	11/12	0.90	0.13	25,56,98,98	0
5	NAG	E	2	14/15	0.91	0.23	29,51,68,81	0
5	NAG	E	1	14/15	0.92	0.19	28,41,55,59	0
4	MAN	D	4	11/12	0.92	0.16	37,55,86,88	0
2	NAG	B	1	14/15	0.93	0.10	23,32,40,49	0
4	MAN	D	5	11/12	0.94	0.11	28,39,51,61	0
3	NAG	C	2	14/15	0.94	0.12	17,26,42,43	0
2	NAG	B	2	14/15	0.95	0.12	21,41,57,66	0
5	NAG	F	2	14/15	0.95	0.10	25,37,48,57	0
4	NAG	D	2	14/15	0.95	0.09	21,31,38,52	0
5	NAG	F	1	14/15	0.97	0.05	18,25,37,37	0
3	NAG	C	1	14/15	0.97	0.07	16,21,25,30	0
4	NAG	D	1	14/15	0.97	0.07	20,25,30,36	0

The following is a graphical depiction of the model fit to experimental electron density for oligosaccharide. Each fit is shown from different orientation to approximate a three-dimensional view.

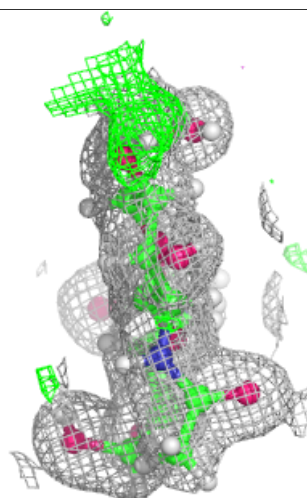
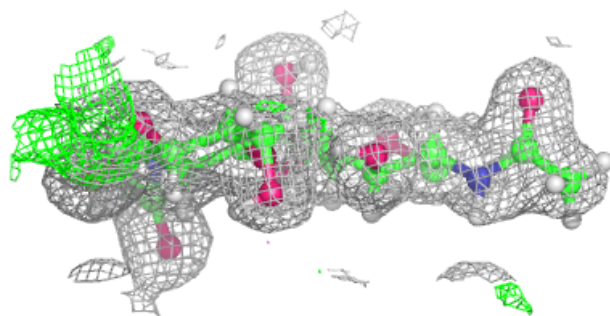
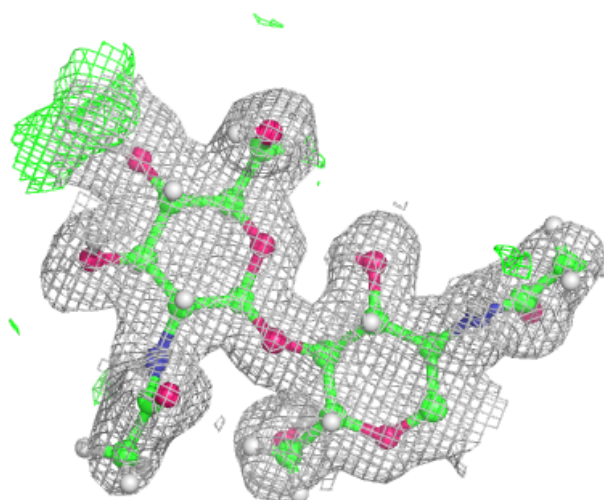
Electron density around Chain B:

$2mF_o-DF_c$ (at 0.7 rmsd) in gray
 mF_o-DF_c (at 3 rmsd) in purple (negative)
and green (positive)



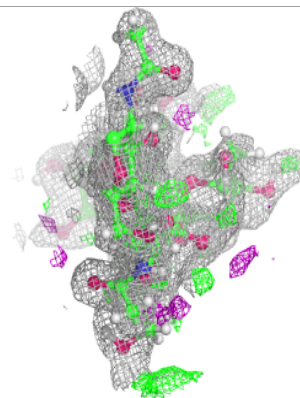
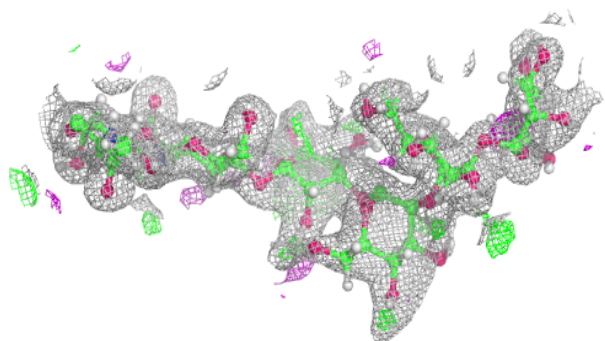
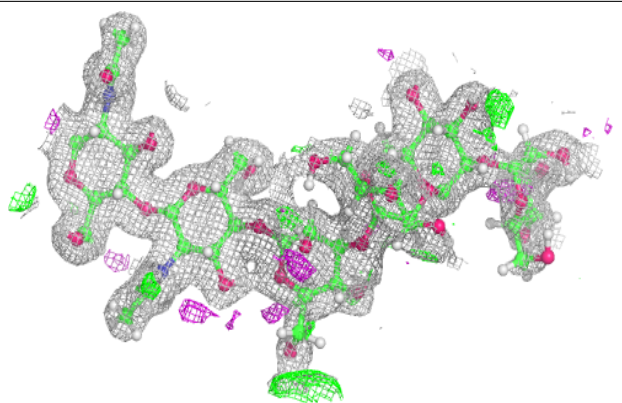
Electron density around Chain C:

$2mF_o-DF_c$ (at 0.7 rmsd) in gray
 mF_o-DF_c (at 3 rmsd) in purple (negative)
and green (positive)

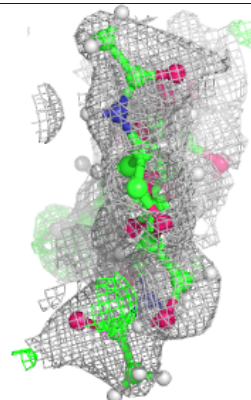
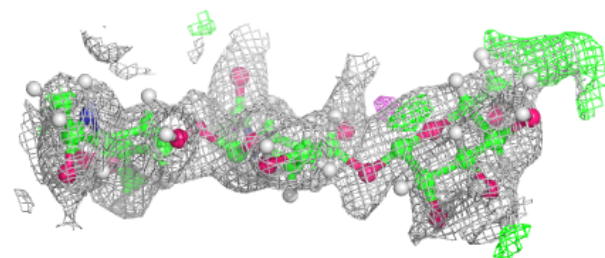
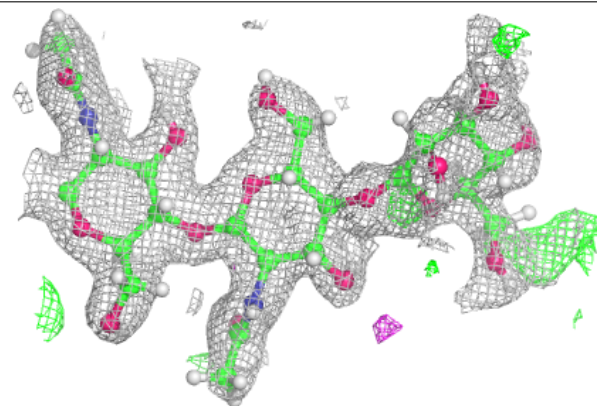


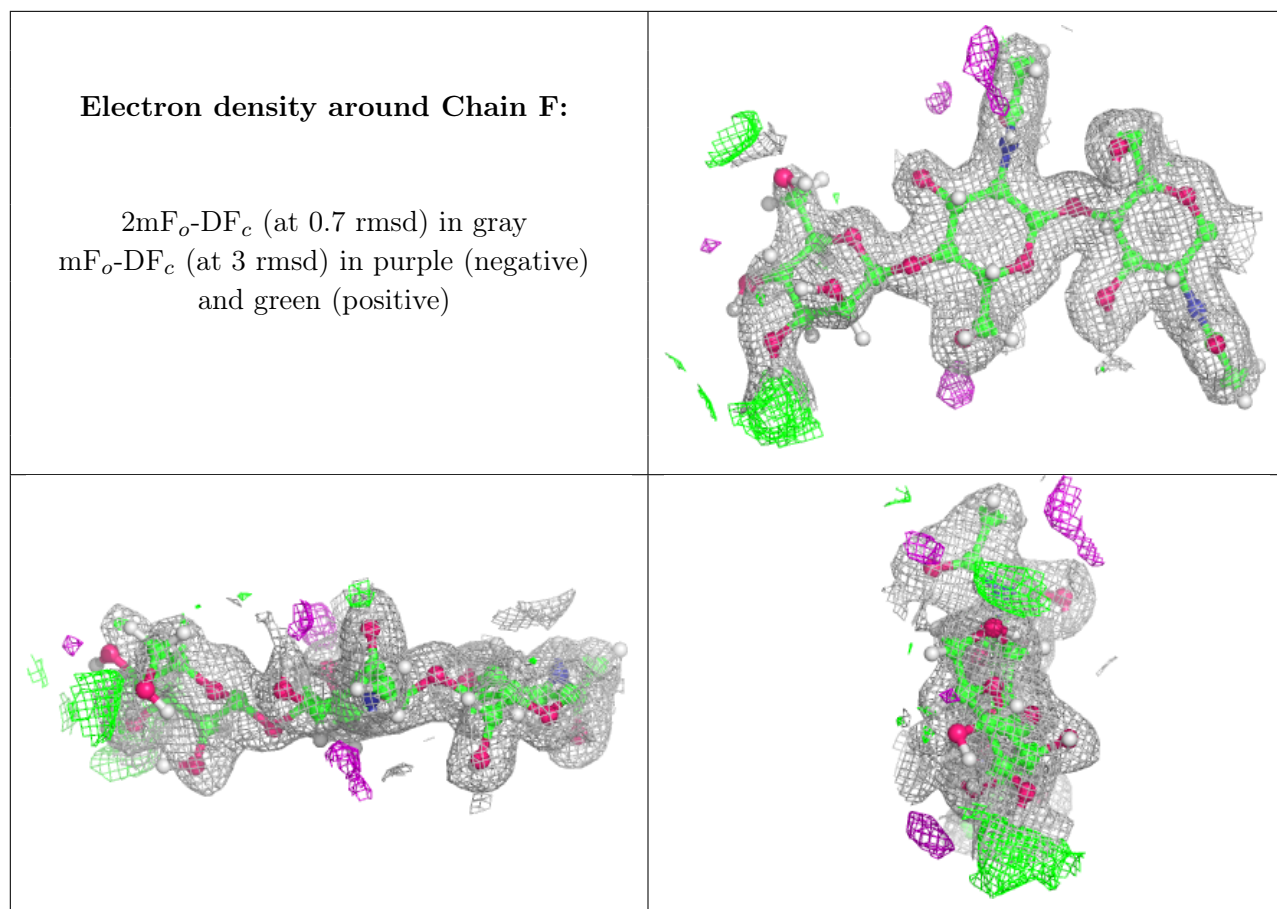
Electron density around Chain D:

$2mF_o-DF_c$ (at 0.7 rmsd) in gray
 mF_o-DF_c (at 3 rmsd) in purple (negative)
and green (positive)

**Electron density around Chain E:**

$2mF_o-DF_c$ (at 0.7 rmsd) in gray
 mF_o-DF_c (at 3 rmsd) in purple (negative)
and green (positive)





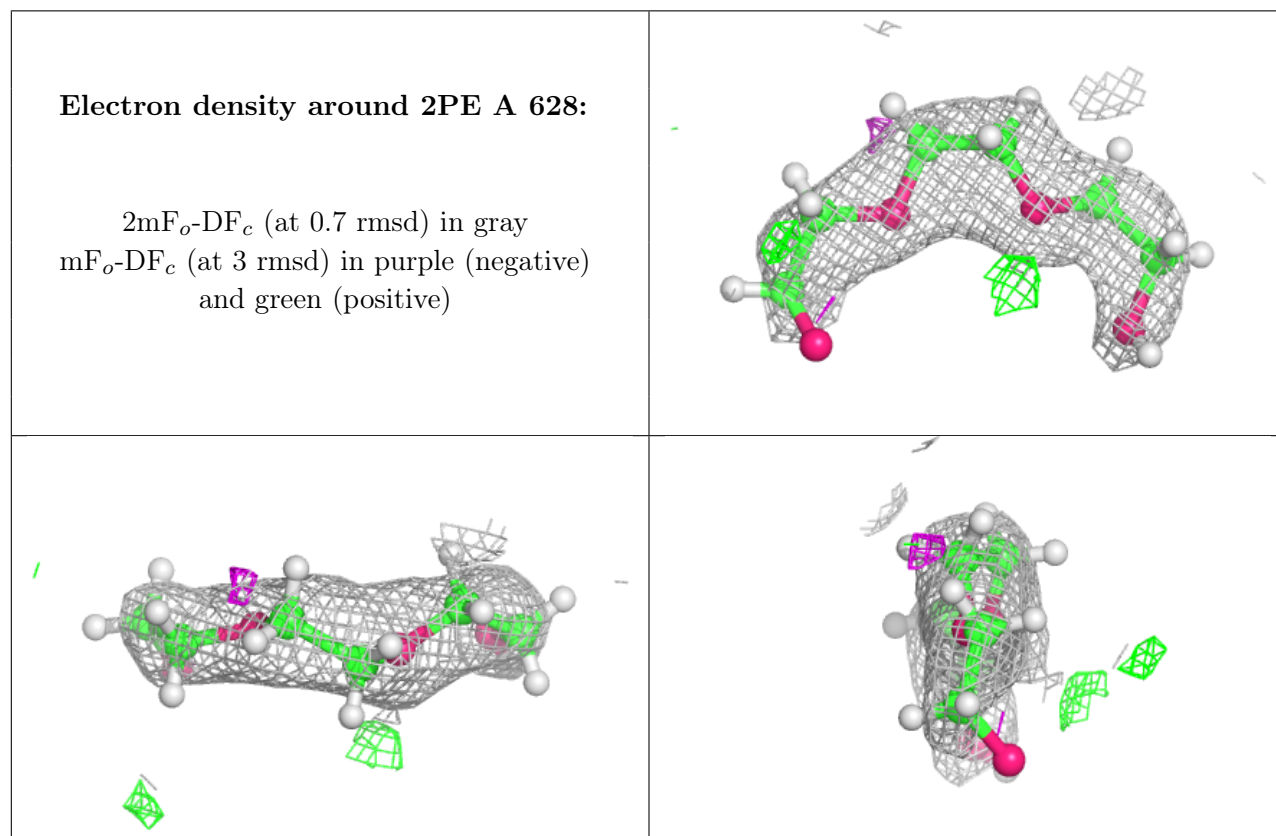
6.4 Ligands [i](#)

In the following table, the Atoms column lists the number of modelled atoms in the group and the number defined in the chemical component dictionary. The B-factors column lists the minimum, median, 95th percentile and maximum values of B factors of atoms in the group. The column labelled 'Q< 0.9' lists the number of atoms with occupancy less than 0.9.

Mol	Type	Chain	Res	Atoms	RSCC	RSR	B-factors(Å ²)	Q<0.9
10	OH	A	629	1/1	0.78	0.19	34,34,34,34	0
8	NAG	A	627	14/15	0.87	0.31	36,53,86,103	0
9	2PE	A	628	10/28	0.90	0.28	46,56,64,66	0
8	NAG	A	626	14/15	0.90	0.20	19,37,57,79	0
7	CA	A	606	1/1	0.99	0.06	20,20,20,20	1
6	CU	A	601	1/1	1.00	0.08	15,15,15,15	0
6	CU	A	602	1/1	1.00	0.05	19,19,19,19	0
6	CU	A	603	1/1	1.00	0.06	19,19,19,19	0
6	CU	A	604	1/1	1.00	0.04	20,20,20,20	0
7	CA	A	605	1/1	1.00	0.05	17,17,17,17	0

The following is a graphical depiction of the model fit to experimental electron density of all instances of the Ligand of Interest. In addition, ligands with molecular weight > 250 and outliers

as shown on the geometry validation Tables will also be included. Each fit is shown from different orientation to approximate a three-dimensional view.



6.5 Other polymers [i](#)

There are no such residues in this entry.