



Full wwPDB X-ray Structure Validation Report ⓘ

Jun 24, 2024 – 08:48 PM EDT

PDB ID : 6F3I
Title : IRAK4 IN COMPLEX WITH inhibitor
Authors : Xue, Y.; Degorce, S.L.; Robb, G.R.; Ferguson, A.D.
Deposited on : 2017-11-28
Resolution : 2.14 Å(reported)

This is a Full wwPDB X-ray Structure Validation Report for a publicly released PDB entry.

We welcome your comments at validation@mail.wwpdb.org

A user guide is available at

<https://www.wwpdb.org/validation/2017/XrayValidationReportHelp>

with specific help available everywhere you see the ⓘ symbol.

The types of validation reports are described at

<http://www.wwpdb.org/validation/2017/FAQs#types>.

The following versions of software and data (see [references ⓘ](#)) were used in the production of this report:

MolProbity : 4.02b-467
Mogul : 1.8.5 (274361), CSD as541be (2020)
Xtriage (Phenix) : 1.13
EDS : 2.37.1
buster-report : 1.1.7 (2018)
Percentile statistics : 20191225.v01 (using entries in the PDB archive December 25th 2019)
Refmac : 5.8.0158
CCP4 : 7.0.044 (Gargrove)
Ideal geometry (proteins) : Engh & Huber (2001)
Ideal geometry (DNA, RNA) : Parkinson et al. (1996)
Validation Pipeline (wwPDB-VP) : 2.37.1

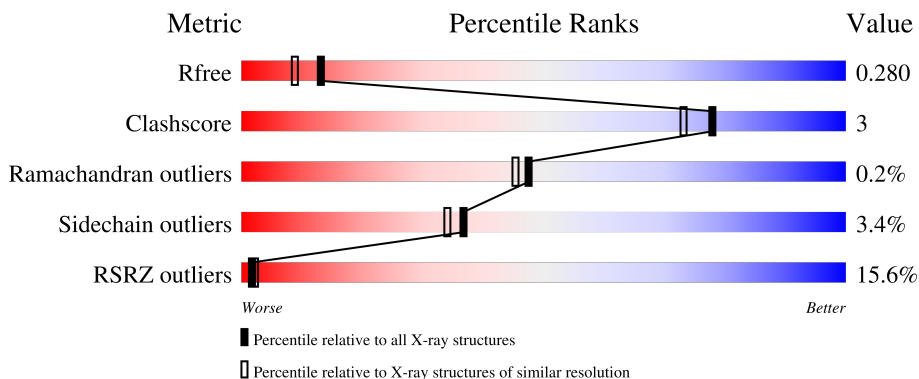
1 Overall quality at a glance

The following experimental techniques were used to determine the structure:

X-RAY DIFFRACTION

The reported resolution of this entry is 2.14 Å.

Percentile scores (ranging between 0-100) for global validation metrics of the entry are shown in the following graphic. The table shows the number of entries on which the scores are based.



Metric	Whole archive (#Entries)	Similar resolution (#Entries, resolution range(Å))
R_{free}	130704	2523 (2.16-2.12)
Clashscore	141614	2653 (2.16-2.12)
Ramachandran outliers	138981	2618 (2.16-2.12)
Sidechain outliers	138945	2617 (2.16-2.12)
RSRZ outliers	127900	2485 (2.16-2.12)

The table below summarises the geometric issues observed across the polymeric chains and their fit to the electron density. The red, orange, yellow and green segments of the lower bar indicate the fraction of residues that contain outliers for ≥ 3 , 2, 1 and 0 types of geometric quality criteria respectively. A grey segment represents the fraction of residues that are not modelled. The numeric value for each fraction is indicated below the corresponding segment, with a dot representing fractions $\leq 5\%$. The upper red bar (where present) indicates the fraction of residues that have poor fit to the electron density. The numeric value is given above the bar.

Mol	Chain	Length	Quality of chain
1	A	322	
1	B	322	

2 Entry composition [i](#)

There are 4 unique types of molecules in this entry. The entry contains 4478 atoms, of which 0 are hydrogens and 0 are deuteriums.

In the tables below, the ZeroOcc column contains the number of atoms modelled with zero occupancy, the AltConf column contains the number of residues with at least one atom in alternate conformation and the Trace column contains the number of residues modelled with at most 2 atoms.

- Molecule 1 is a protein called Interleukin-1 receptor-associated kinase 4.

Mol	Chain	Residues	Atoms						ZeroOcc	AltConf	Trace
			Total	C	N	O	P	S			
1	A	260	2076	1310	349	401	2	14	0	0	0
1	B	281	2224	1395	375	438	2	14	0	0	0

There are 30 discrepancies between the modelled and reference sequences:

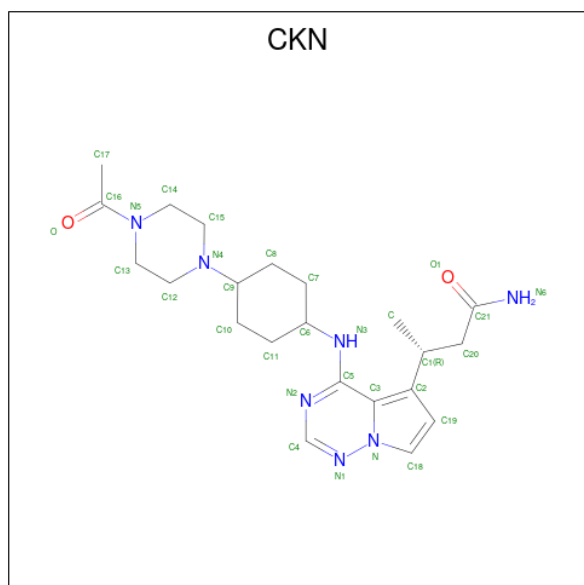
Chain	Residue	Modelled	Actual	Comment	Reference
A	139	MET	-	initiating methionine	UNP Q9NWZ3
A	140	HIS	-	expression tag	UNP Q9NWZ3
A	141	HIS	-	expression tag	UNP Q9NWZ3
A	142	HIS	-	expression tag	UNP Q9NWZ3
A	143	HIS	-	expression tag	UNP Q9NWZ3
A	144	HIS	-	expression tag	UNP Q9NWZ3
A	145	HIS	-	expression tag	UNP Q9NWZ3
A	146	HIS	-	expression tag	UNP Q9NWZ3
A	147	GLU	-	expression tag	UNP Q9NWZ3
A	148	ASN	-	expression tag	UNP Q9NWZ3
A	149	LEU	-	expression tag	UNP Q9NWZ3
A	150	TYR	-	expression tag	UNP Q9NWZ3
A	151	PHE	-	expression tag	UNP Q9NWZ3
A	152	GLN	-	expression tag	UNP Q9NWZ3
A	153	GLY	-	expression tag	UNP Q9NWZ3
B	139	MET	-	initiating methionine	UNP Q9NWZ3
B	140	HIS	-	expression tag	UNP Q9NWZ3
B	141	HIS	-	expression tag	UNP Q9NWZ3
B	142	HIS	-	expression tag	UNP Q9NWZ3
B	143	HIS	-	expression tag	UNP Q9NWZ3
B	144	HIS	-	expression tag	UNP Q9NWZ3
B	145	HIS	-	expression tag	UNP Q9NWZ3
B	146	HIS	-	expression tag	UNP Q9NWZ3
B	147	GLU	-	expression tag	UNP Q9NWZ3
B	148	ASN	-	expression tag	UNP Q9NWZ3

Continued on next page...

Continued from previous page...

Chain	Residue	Modelled	Actual	Comment	Reference
B	149	LEU	-	expression tag	UNP Q9NWZ3
B	150	TYR	-	expression tag	UNP Q9NWZ3
B	151	PHE	-	expression tag	UNP Q9NWZ3
B	152	GLN	-	expression tag	UNP Q9NWZ3
B	153	GLY	-	expression tag	UNP Q9NWZ3

- Molecule 2 is (3 {R})-3-[4-[[4-(4-ethanoylpiperazin-1-yl)cyclohexyl]amino]pyrrolo[2,1-f][1,2,4]triazin-5-yl]butanamide (three-letter code: CKN) (formula: C₂₂H₃₃N₇O₂).



Mol	Chain	Residues	Atoms				ZeroOcc	AltConf
			Total	C	N	O		
2	A	1	31	22	7	2	0	0
2	B	1	31	22	7	2	0	0

- Molecule 3 is SULFATE ION (three-letter code: SO4) (formula: O₄S).



Mol	Chain	Residues	Atoms		ZeroOcc	AltConf
3	B	1	Total	O S	0	0
			5	4 1		

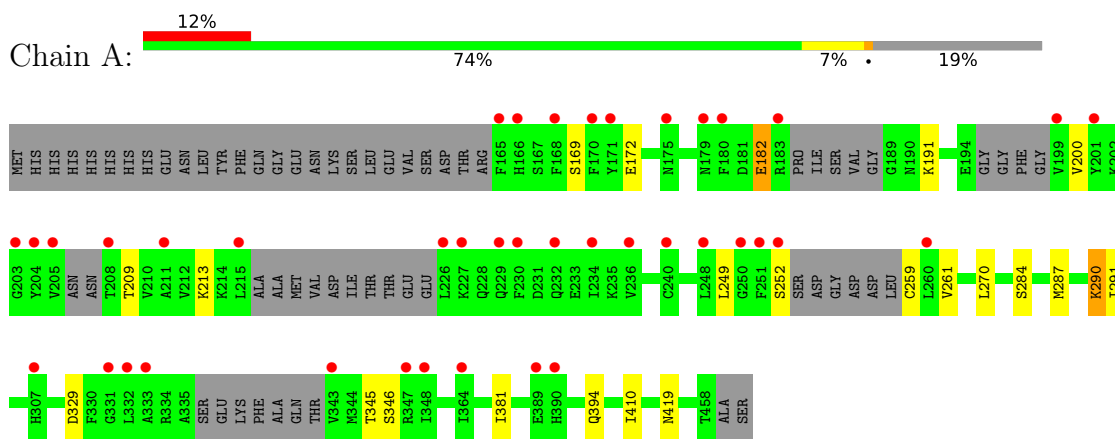
- Molecule 4 is water.

Mol	Chain	Residues	Atoms		ZeroOcc	AltConf
4	A	53	Total	O	0	0
			53	53		
4	B	58	Total	O	0	0
			58	58		

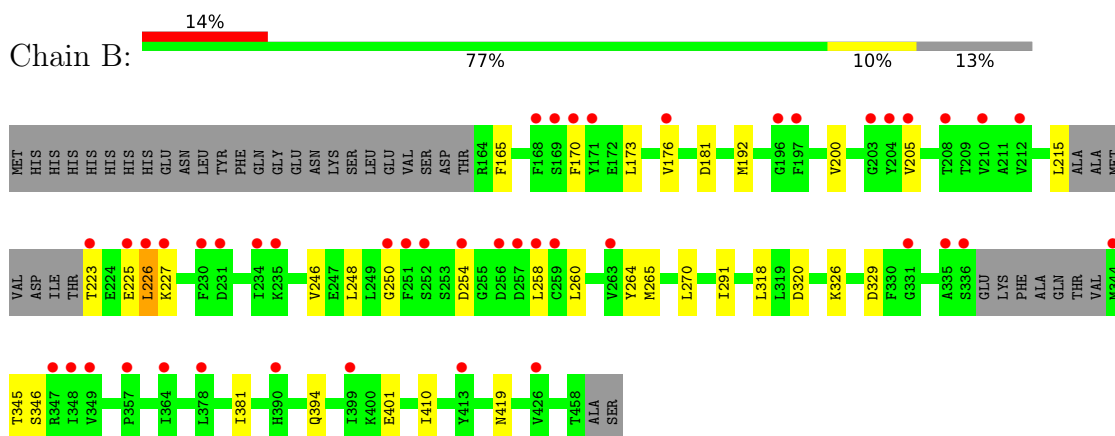
3 Residue-property plots [i](#)

These plots are drawn for all protein, RNA, DNA and oligosaccharide chains in the entry. The first graphic for a chain summarises the proportions of the various outlier classes displayed in the second graphic. The second graphic shows the sequence view annotated by issues in geometry and electron density. Residues are color-coded according to the number of geometric quality criteria for which they contain at least one outlier: green = 0, yellow = 1, orange = 2 and red = 3 or more. A red dot above a residue indicates a poor fit to the electron density ($RSRZ > 2$). Stretches of 2 or more consecutive residues without any outlier are shown as a green connector. Residues present in the sample, but not in the model, are shown in grey.

- Molecule 1: Interleukin-1 receptor-associated kinase 4



- Molecule 1: Interleukin-1 receptor-associated kinase 4



4 Data and refinement statistics

Property	Value	Source
Space group	I 2 2 2	Depositor
Cell constants a, b, c, α , β , γ	86.52Å 108.97Å 141.88Å 90.00° 90.00° 90.00°	Depositor
Resolution (Å)	54.49 – 2.14 54.48 – 2.14	Depositor EDS
% Data completeness (in resolution range)	99.9 (54.49-2.14) 99.9 (54.48-2.14)	Depositor EDS
R_{merge}	0.06	Depositor
R_{sym}	(Not available)	Depositor
$\langle I/\sigma(I) \rangle$ ¹	2.46 (at 2.14Å)	Xtrriage
Refinement program	BUSTER 2.11.6 PACIOREK	Depositor
R, R_{free}	0.236 , 0.270 0.247 , 0.280	Depositor DCC
R_{free} test set	1841 reflections (4.93%)	wwPDB-VP
Wilson B-factor (Å ²)	46.3	Xtrriage
Anisotropy	0.550	Xtrriage
Bulk solvent k_{sol} (e/Å ³), B_{sol} (Å ²)	0.35 , 66.7	EDS
L-test for twinning ²	$\langle L \rangle = 0.47$, $\langle L^2 \rangle = 0.30$	Xtrriage
Estimated twinning fraction	No twinning to report.	Xtrriage
F_o, F_c correlation	0.94	EDS
Total number of atoms	4478	wwPDB-VP
Average B, all atoms (Å ²)	81.0	wwPDB-VP

Xtrriage's analysis on translational NCS is as follows: *The largest off-origin peak in the Patterson function is 19.39% of the height of the origin peak. No significant pseudotranslation is detected.*

¹Intensities estimated from amplitudes.

²Theoretical values of $\langle |L| \rangle$, $\langle L^2 \rangle$ for acentric reflections are 0.5, 0.333 respectively for untwinned datasets, and 0.375, 0.2 for perfectly twinned datasets.

5 Model quality

5.1 Standard geometry

Bond lengths and bond angles in the following residue types are not validated in this section: TPO, SO4, SEP, CKN

The Z score for a bond length (or angle) is the number of standard deviations the observed value is removed from the expected value. A bond length (or angle) with $|Z| > 5$ is considered an outlier worth inspection. RMSZ is the root-mean-square of all Z scores of the bond lengths (or angles).

Mol	Chain	Bond lengths		Bond angles	
		RMSZ	# Z >5	RMSZ	# Z >5
1	A	0.44	0/2084	0.60	0/2797
1	B	0.45	0/2239	0.63	0/3014
All	All	0.44	0/4323	0.61	0/5811

There are no bond length outliers.

There are no bond angle outliers.

There are no chirality outliers.

There are no planarity outliers.

5.2 Too-close contacts

In the following table, the Non-H and H(model) columns list the number of non-hydrogen atoms and hydrogen atoms in the chain respectively. The H(added) column lists the number of hydrogen atoms added and optimized by MolProbity. The Clashes column lists the number of clashes within the asymmetric unit, whereas Symm-Clashes lists symmetry-related clashes.

Mol	Chain	Non-H	H(model)	H(added)	Clashes	Symm-Clashes
1	A	2076	0	2058	10	0
1	B	2224	0	2186	15	0
2	A	31	0	0	0	0
2	B	31	0	0	0	0
3	B	5	0	0	0	0
4	A	53	0	0	0	0
4	B	58	0	0	0	0
All	All	4478	0	4244	25	0

The all-atom clashscore is defined as the number of clashes found per 1000 atoms (including hydrogen atoms). The all-atom clashscore for this structure is 3.

All (25) close contacts within the same asymmetric unit are listed below, sorted by their clash magnitude.

Atom-1	Atom-2	Interatomic distance (Å)	Clash overlap (Å)
1:B:246:VAL:HG11	1:B:318:LEU:HD12	1.77	0.65
1:B:170:PHE:HA	1:B:173:LEU:HD12	1.87	0.57
1:A:252:SER:HB3	1:A:259:CYS:HB2	1.86	0.56
1:B:265:MET:CE	1:B:320:ASP:HB3	2.34	0.56
1:A:200:VAL:HG22	1:A:213:LYS:HG2	1.88	0.56
1:B:227:LYS:HG2	1:B:258:LEU:HD11	1.91	0.53
1:B:223:THR:HG23	1:B:226:LEU:HB3	1.93	0.50
1:A:284:SER:H	1:A:287:MET:HE3	1.77	0.49
1:B:165:PHE:HB3	1:B:250:GLY:HA2	1.95	0.49
1:A:284:SER:OG	1:A:287:MET:HG3	2.13	0.48
1:B:270:LEU:HD13	1:B:291:ILE:HG21	1.95	0.48
1:B:381:ILE:HG21	1:B:410:ILE:HD11	1.96	0.48
1:B:176:VAL:HG11	1:B:205:VAL:HG22	1.96	0.48
1:B:192:MET:SD	1:B:264:TYR:HE1	2.37	0.47
1:A:381:ILE:HG21	1:A:410:ILE:HD11	1.96	0.47
1:A:182:GLU:HA	1:A:191:LYS:HB2	1.98	0.45
1:B:215:LEU:HD12	1:B:258:LEU:HB2	1.99	0.45
1:A:270:LEU:HD13	1:A:291:ILE:HG21	1.98	0.44
1:B:215:LEU:HB3	1:B:226:LEU:HD21	2.00	0.43
1:A:284:SER:H	1:A:287:MET:CE	2.31	0.43
1:A:287:MET:HA	1:A:290:LYS:HD2	2.00	0.43
1:B:265:MET:HE2	1:B:320:ASP:HB3	2.02	0.42
1:B:248:LEU:HD11	1:B:260:LEU:HD22	2.02	0.41
1:A:169:SER:HB2	1:A:172:GLU:HB2	2.02	0.41
1:B:265:MET:HE1	1:B:326:LYS:HE3	2.03	0.40

There are no symmetry-related clashes.

5.3 Torsion angles [i](#)

5.3.1 Protein backbone [i](#)

In the following table, the Percentiles column shows the percent Ramachandran outliers of the chain as a percentile score with respect to all X-ray entries followed by that with respect to entries of similar resolution.

The Analysed column shows the number of residues for which the backbone conformation was analysed, and the total number of residues.

Mol	Chain	Analysed	Favoured	Allowed	Outliers	Percentiles	
1	A	242/322 (75%)	238 (98%)	4 (2%)	0	100	100
1	B	273/322 (85%)	265 (97%)	7 (3%)	1 (0%)	34	29
All	All	515/644 (80%)	503 (98%)	11 (2%)	1 (0%)	47	45

All (1) Ramachandran outliers are listed below:

Mol	Chain	Res	Type
1	B	181	ASP

5.3.2 Protein sidechains [i](#)

In the following table, the Percentiles column shows the percent sidechain outliers of the chain as a percentile score with respect to all X-ray entries followed by that with respect to entries of similar resolution.

The Analysed column shows the number of residues for which the sidechain conformation was analysed, and the total number of residues.

Mol	Chain	Analysed	Rotameric	Outliers	Percentiles	
1	A	228/280 (81%)	220 (96%)	8 (4%)	36	33
1	B	244/280 (87%)	236 (97%)	8 (3%)	38	35
All	All	472/560 (84%)	456 (97%)	16 (3%)	37	34

All (16) residues with a non-rotameric sidechain are listed below:

Mol	Chain	Res	Type
1	A	182	GLU
1	A	209	THR
1	A	249	LEU
1	A	261	VAL
1	A	290	LYS
1	A	329	ASP
1	A	394	GLN
1	A	419	ASN
1	B	200	VAL
1	B	225	GLU
1	B	226	LEU
1	B	254	ASP
1	B	329	ASP
1	B	394	GLN
1	B	401	GLU

Continued on next page...

Continued from previous page...

Mol	Chain	Res	Type
1	B	419	ASN

Sometimes sidechains can be flipped to improve hydrogen bonding and reduce clashes. All (2) such sidechains are listed below:

Mol	Chain	Res	Type
1	A	419	ASN
1	B	419	ASN

5.3.3 RNA ⓘ

There are no RNA molecules in this entry.

5.4 Non-standard residues in protein, DNA, RNA chains ⓘ

4 non-standard protein/DNA/RNA residues are modelled in this entry.

In the following table, the Counts columns list the number of bonds (or angles) for which Mogul statistics could be retrieved, the number of bonds (or angles) that are observed in the model and the number of bonds (or angles) that are defined in the Chemical Component Dictionary. The Link column lists molecule types, if any, to which the group is linked. The Z score for a bond length (or angle) is the number of standard deviations the observed value is removed from the expected value. A bond length (or angle) with $|Z| > 2$ is considered an outlier worth inspection. RMSZ is the root-mean-square of all Z scores of the bond lengths (or angles).

Mol	Type	Chain	Res	Link	Bond lengths			Bond angles		
					Counts	RMSZ	# Z > 2	Counts	RMSZ	# Z > 2
1	TPO	A	345	1	8,10,11	1.30	1 (12%)	10,14,16	1.00	0
1	SEP	B	346	1	8,9,10	0.85	0	8,12,14	1.56	4 (50%)
1	SEP	A	346	1	8,9,10	0.85	0	8,12,14	1.42	2 (25%)
1	TPO	B	345	1	8,10,11	1.37	2 (25%)	10,14,16	1.29	1 (10%)

In the following table, the Chirals column lists the number of chiral outliers, the number of chiral centers analysed, the number of these observed in the model and the number defined in the Chemical Component Dictionary. Similar counts are reported in the Torsion and Rings columns. '2' means no outliers of that kind were identified.

Mol	Type	Chain	Res	Link	Chirals	Torsions	Rings
1	TPO	A	345	1	-	2/9/11/13	-
1	SEP	B	346	1	-	0/5/8/10	-
1	SEP	A	346	1	-	0/5/8/10	-

Continued on next page...

Continued from previous page...

Mol	Type	Chain	Res	Link	Chirals	Torsions	Rings
1	TPO	B	345	1	-	5/9/11/13	-

All (3) bond length outliers are listed below:

Mol	Chain	Res	Type	Atoms	Z	Observed(Å)	Ideal(Å)
1	A	345	TPO	CB-CA	2.29	1.59	1.53
1	B	345	TPO	CB-CA	2.29	1.59	1.53
1	B	345	TPO	P-OG1	-2.13	1.55	1.59

All (7) bond angle outliers are listed below:

Mol	Chain	Res	Type	Atoms	Z	Observed(°)	Ideal(°)
1	B	346	SEP	OG-P-O1P	2.26	112.81	106.47
1	B	346	SEP	O3P-P-OG	2.21	112.61	106.73
1	A	346	SEP	OG-P-O1P	2.21	112.66	106.47
1	B	345	TPO	O2P-P-OG1	2.20	115.87	105.99
1	B	346	SEP	OG-CB-CA	2.13	110.21	108.14
1	A	346	SEP	O3P-P-OG	2.11	112.34	106.73
1	B	346	SEP	P-OG-CB	-2.00	112.78	118.30

There are no chirality outliers.

All (7) torsion outliers are listed below:

Mol	Chain	Res	Type	Atoms
1	A	345	TPO	N-CA-CB-OG1
1	A	345	TPO	O-C-CA-CB
1	B	345	TPO	N-CA-CB-OG1
1	B	345	TPO	CB-OG1-P-O1P
1	B	345	TPO	CB-OG1-P-O2P
1	B	345	TPO	CB-OG1-P-O3P
1	B	345	TPO	O-C-CA-CB

There are no ring outliers.

No monomer is involved in short contacts.

5.5 Carbohydrates [i](#)

There are no monosaccharides in this entry.

5.6 Ligand geometry

3 ligands are modelled in this entry.

In the following table, the Counts columns list the number of bonds (or angles) for which Mogul statistics could be retrieved, the number of bonds (or angles) that are observed in the model and the number of bonds (or angles) that are defined in the Chemical Component Dictionary. The Link column lists molecule types, if any, to which the group is linked. The Z score for a bond length (or angle) is the number of standard deviations the observed value is removed from the expected value. A bond length (or angle) with $|Z| > 2$ is considered an outlier worth inspection. RMSZ is the root-mean-square of all Z scores of the bond lengths (or angles).

Mol	Type	Chain	Res	Link	Bond lengths			Bond angles		
					Counts	RMSZ	# Z > 2	Counts	RMSZ	# Z > 2
2	CKN	A	501	-	29,34,34	0.65	1 (3%)	36,48,48	0.69	1 (2%)
3	SO4	B	501	-	4,4,4	0.15	0	6,6,6	0.15	0
2	CKN	B	502	-	29,34,34	0.52	0	36,48,48	1.09	4 (11%)

In the following table, the Chirals column lists the number of chiral outliers, the number of chiral centers analysed, the number of these observed in the model and the number defined in the Chemical Component Dictionary. Similar counts are reported in the Torsion and Rings columns. '-' means no outliers of that kind were identified.

Mol	Type	Chain	Res	Link	Chirals	Torsions	Rings
2	CKN	A	501	-	-	3/17/40/40	0/4/4/4
2	CKN	B	502	-	-	6/17/40/40	0/4/4/4

All (1) bond length outliers are listed below:

Mol	Chain	Res	Type	Atoms	Z	Observed(Å)	Ideal(Å)
2	A	501	CKN	C4-N1	2.35	1.36	1.33

All (5) bond angle outliers are listed below:

Mol	Chain	Res	Type	Atoms	Z	Observed(°)	Ideal(°)
2	B	502	CKN	C18-C19-C2	3.14	110.43	105.63
2	B	502	CKN	C8-C9-N4	-2.49	106.04	112.52
2	B	502	CKN	C15-N4-C12	2.19	113.08	109.08
2	A	501	CKN	C18-C19-C2	2.18	108.96	105.63
2	B	502	CKN	C10-C9-N4	2.06	117.86	112.52

There are no chirality outliers.

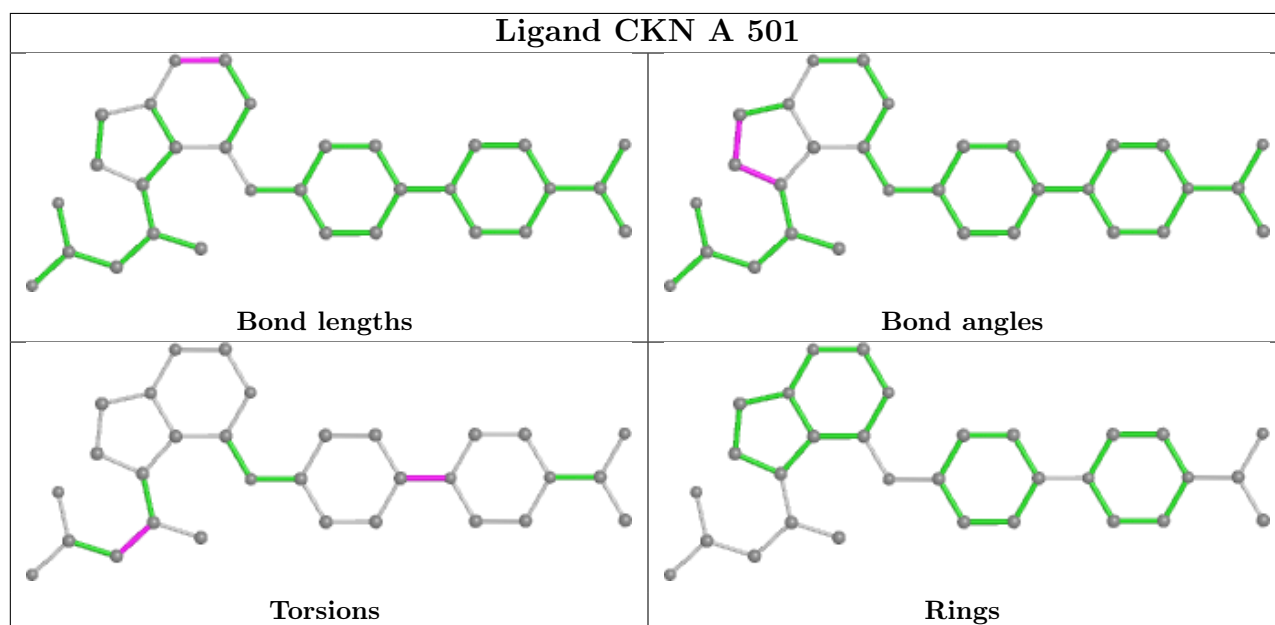
All (9) torsion outliers are listed below:

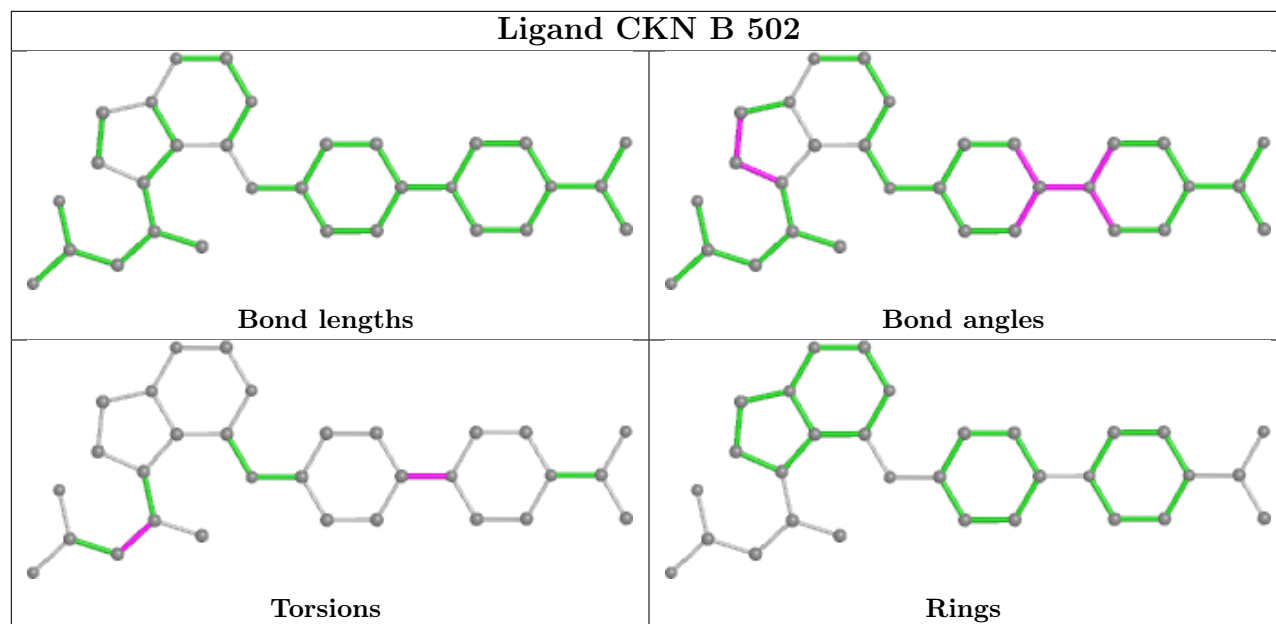
Mol	Chain	Res	Type	Atoms
2	A	501	CKN	C2-C1-C20-C21
2	A	501	CKN	C-C1-C20-C21
2	B	502	CKN	C8-C9-N4-C12
2	B	502	CKN	C8-C9-N4-C15
2	B	502	CKN	C10-C9-N4-C12
2	B	502	CKN	C10-C9-N4-C15
2	B	502	CKN	C-C1-C20-C21
2	B	502	CKN	C2-C1-C20-C21
2	A	501	CKN	C10-C9-N4-C15

There are no ring outliers.

No monomer is involved in short contacts.

The following is a two-dimensional graphical depiction of Mogul quality analysis of bond lengths, bond angles, torsion angles, and ring geometry for all instances of the Ligand of Interest. In addition, ligands with molecular weight > 250 and outliers as shown on the validation Tables will also be included. For torsion angles, if less than 5% of the Mogul distribution of torsion angles is within 10 degrees of the torsion angle in question, then that torsion angle is considered an outlier. Any bond that is central to one or more torsion angles identified as an outlier by Mogul will be highlighted in the graph. For rings, the root-mean-square deviation (RMSD) between the ring in question and similar rings identified by Mogul is calculated over all ring torsion angles. If the average RMSD is greater than 60 degrees and the minimal RMSD between the ring in question and any Mogul-identified rings is also greater than 60 degrees, then that ring is considered an outlier. The outliers are highlighted in purple. The color gray indicates Mogul did not find sufficient equivalents in the CSD to analyse the geometry.





5.7 Other polymers [i](#)

There are no such residues in this entry.

5.8 Polymer linkage issues [i](#)

The following chains have linkage breaks:

Mol	Chain	Number of breaks
1	A	1

All chain breaks are listed below:

Model	Chain	Residue-1	Atom-1	Residue-2	Atom-2	Distance (Å)
1	A	202:LYS	C	203:GLY	N	3.25

6 Fit of model and data

6.1 Protein, DNA and RNA chains

In the following table, the column labelled ‘#RSRZ > 2’ contains the number (and percentage) of RSRZ outliers, followed by percent RSRZ outliers for the chain as percentile scores relative to all X-ray entries and entries of similar resolution. The OWAB column contains the minimum, median, 95th percentile and maximum values of the occupancy-weighted average B-factor per residue. The column labelled ‘Q < 0.9’ lists the number of (and percentage) of residues with an average occupancy less than 0.9.

Mol	Chain	Analysed	<RSRZ>	#RSRZ>2	OWAB(Å ²)	Q<0.9
1	A	258/322 (80%)	0.94	40 (15%) 2 2	41, 71, 147, 183	0
1	B	279/322 (86%)	1.11	44 (15%) 2 2	42, 77, 122, 157	0
All	All	537/644 (83%)	1.02	84 (15%) 2 2	41, 75, 142, 183	0

All (84) RSRZ outliers are listed below:

Mol	Chain	Res	Type	RSRZ
1	A	236	VAL	11.2
1	B	227	LYS	8.3
1	A	203	GLY	6.4
1	A	226	LEU	6.3
1	A	251	PHE	6.1
1	A	230	PHE	6.0
1	B	259	CYS	5.4
1	B	171	TYR	5.1
1	B	251	PHE	4.8
1	B	226	LEU	4.4
1	B	258	LEU	4.4
1	A	179	ASN	4.3
1	B	349	VAL	4.3
1	A	199	VAL	4.1
1	A	165	PHE	4.1
1	B	230	PHE	4.1
1	B	196	GLY	4.1
1	B	252	SER	4.0
1	B	364	ILE	3.9
1	A	211	ALA	3.8
1	A	343	VAL	3.8
1	A	171	TYR	3.8
1	B	347	ARG	3.7
1	B	344	MET	3.6

Continued on next page...

Continued from previous page...

Mol	Chain	Res	Type	RSRZ
1	B	212	VAL	3.5
1	B	205	VAL	3.4
1	B	399	ILE	3.4
1	A	331	GLY	3.3
1	B	357	PRO	3.3
1	B	170	PHE	3.3
1	B	254	ASP	3.2
1	A	252	SER	3.2
1	B	225	GLU	3.1
1	B	257	ASP	3.1
1	B	390	HIS	3.1
1	A	180	PHE	3.1
1	B	203	GLY	3.1
1	B	223	THR	3.0
1	A	170	PHE	3.0
1	A	250	GLY	2.9
1	A	232	GLN	2.9
1	B	234	ILE	2.9
1	B	250	GLY	2.9
1	A	168	PHE	2.8
1	A	348	ILE	2.8
1	A	248	LEU	2.8
1	A	332	LEU	2.8
1	A	333	ALA	2.7
1	A	347	ARG	2.7
1	A	183	ARG	2.7
1	B	169	SER	2.7
1	B	336	SER	2.6
1	A	166	HIS	2.6
1	B	348	ILE	2.6
1	B	197	PHE	2.6
1	A	215	LEU	2.6
1	B	335	ALA	2.5
1	A	240	CYS	2.5
1	A	389	GLU	2.5
1	B	413	TYR	2.5
1	A	260	LEU	2.4
1	B	263	VAL	2.4
1	A	204	TYR	2.4
1	A	307	HIS	2.4
1	B	168	PHE	2.4
1	B	256	ASP	2.4

Continued on next page...

Continued from previous page...

Mol	Chain	Res	Type	RSRZ
1	B	210	VAL	2.3
1	A	208	THR	2.3
1	A	234	ILE	2.3
1	A	205	VAL	2.3
1	B	204	TYR	2.3
1	A	364	ILE	2.3
1	B	426	VAL	2.3
1	B	378	LEU	2.2
1	B	331	GLY	2.2
1	B	231	ASP	2.2
1	A	175	ASN	2.1
1	B	208	THR	2.1
1	A	227	LYS	2.1
1	A	201	TYR	2.1
1	B	176	VAL	2.1
1	A	229	GLN	2.1
1	A	390	HIS	2.1
1	B	235	LYS	2.1

6.2 Non-standard residues in protein, DNA, RNA chains [i](#)

In the following table, the Atoms column lists the number of modelled atoms in the group and the number defined in the chemical component dictionary. The B-factors column lists the minimum, median, 95th percentile and maximum values of B factors of atoms in the group. The column labelled 'Q< 0.9' lists the number of atoms with occupancy less than 0.9.

Mol	Type	Chain	Res	Atoms	RSCC	RSR	B-factors(Å ²)	Q<0.9
1	SEP	B	346	10/11	0.61	0.22	133,140,147,149	0
1	SEP	A	346	10/11	0.71	0.30	124,132,143,144	0
1	TPO	B	345	11/12	0.82	0.20	123,128,136,136	0
1	TPO	A	345	11/12	0.88	0.18	112,118,123,124	0

6.3 Carbohydrates [i](#)

There are no monosaccharides in this entry.

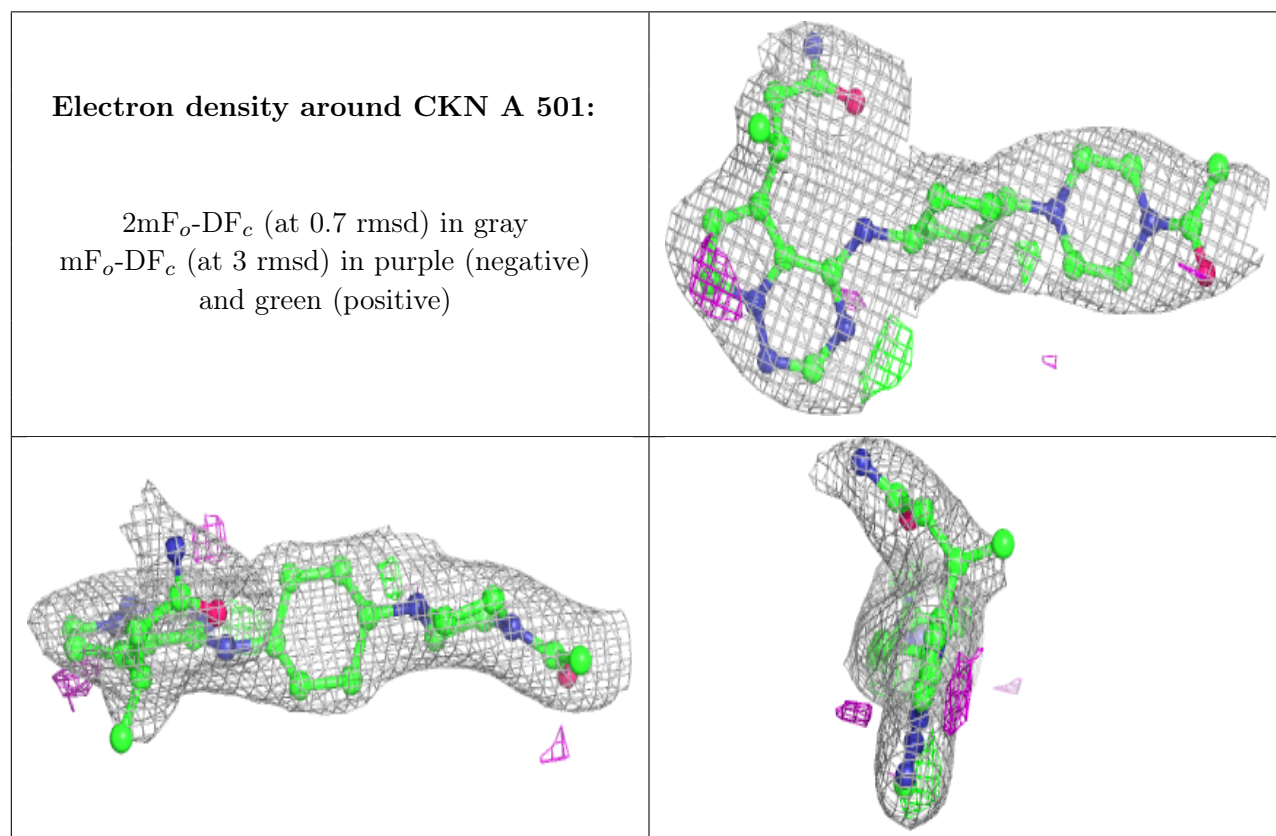
6.4 Ligands [i](#)

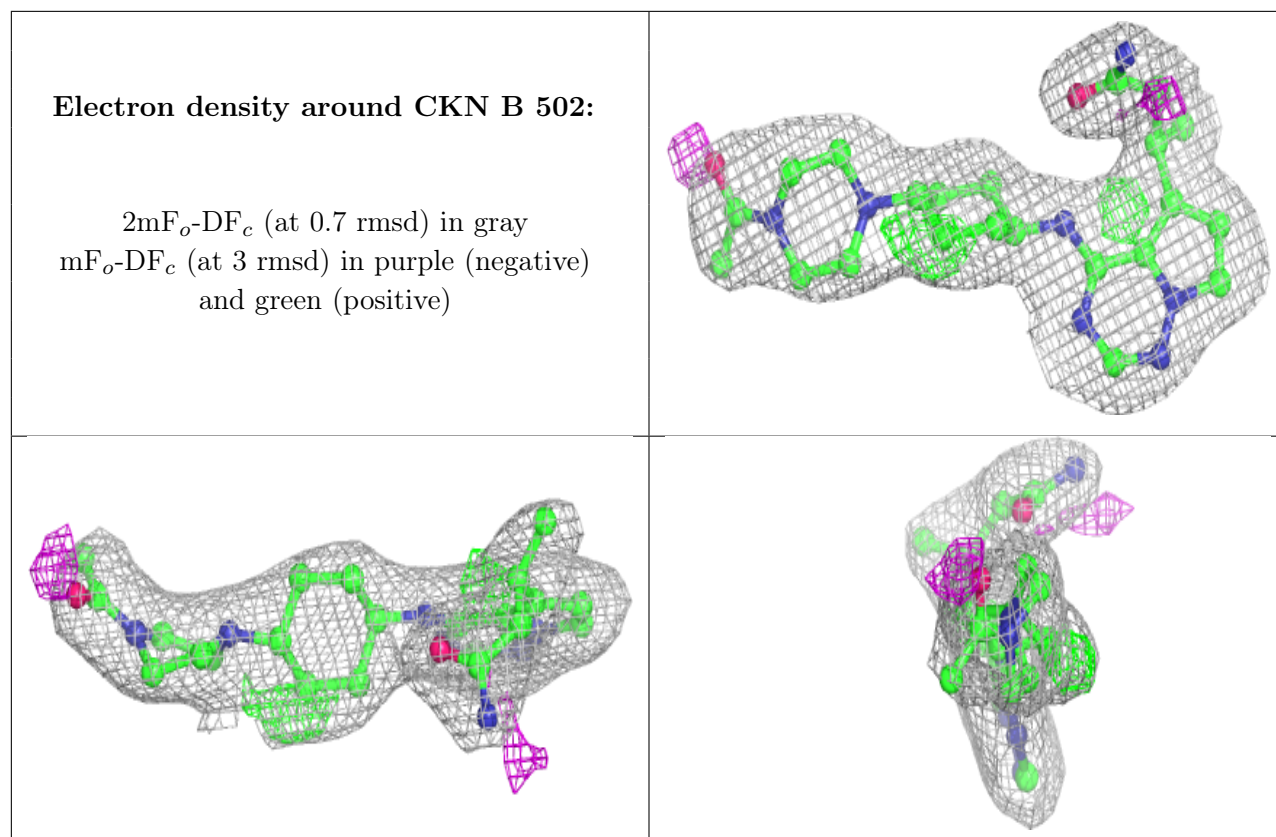
In the following table, the Atoms column lists the number of modelled atoms in the group and the number defined in the chemical component dictionary. The B-factors column lists the minimum,

median, 95th percentile and maximum values of B factors of atoms in the group. The column labelled 'Q < 0.9' lists the number of atoms with occupancy less than 0.9.

Mol	Type	Chain	Res	Atoms	RSCC	RSR	B-factors(Å ²)	Q<0.9
2	CKN	A	501	31/31	0.88	0.16	50,56,72,74	0
3	SO4	B	501	5/5	0.90	0.17	83,84,86,88	0
2	CKN	B	502	31/31	0.93	0.19	31,42,62,65	0

The following is a graphical depiction of the model fit to experimental electron density of all instances of the Ligand of Interest. In addition, ligands with molecular weight > 250 and outliers as shown on the geometry validation Tables will also be included. Each fit is shown from different orientation to approximate a three-dimensional view.





6.5 Other polymers [i](#)

There are no such residues in this entry.