



# Full wwPDB X-ray Structure Validation Report ⓘ

Oct 7, 2023 – 03:59 PM EDT

PDB ID : 6DDC  
Title : Crystal structure of the single mutant (D52N) of NT5C2-537X in the basal state, Northeast Structural Genomics Consortium Target  
Authors : Forouhar, F.; Dieck, C.L.; Tzoneva, G.; Carpenter, Z.; Ambesi-Impiombato, A.; Sanchez-Martin, M.; Kirschner-Schwabe, R.; Lew, S.; Seetharaman, J.; Ferrando, A.A.; Tong, L.; Northeast Structural Genomics Consortium (NESG)  
Deposited on : 2018-05-09  
Resolution : 2.91 Å(reported)

This is a Full wwPDB X-ray Structure Validation Report for a publicly released PDB entry.

We welcome your comments at [validation@mail.wwpdb.org](mailto:validation@mail.wwpdb.org)

A user guide is available at

<https://www.wwpdb.org/validation/2017/XrayValidationReportHelp>

with specific help available everywhere you see the ⓘ symbol.

The types of validation reports are described at

<http://www.wwpdb.org/validation/2017/FAQs#types>.

---

The following versions of software and data (see [references ⓘ](#)) were used in the production of this report:

MolProbity : 4.02b-467  
Mogul : 1.8.5 (274361), CSD as541be (2020)  
Xtriage (Phenix) : 1.13  
EDS : 2.35.1  
Percentile statistics : 20191225.v01 (using entries in the PDB archive December 25th 2019)  
Refmac : 5.8.0158  
CCP4 : 7.0.044 (Gargrove)  
Ideal geometry (proteins) : Engh & Huber (2001)  
Ideal geometry (DNA, RNA) : Parkinson et al. (1996)  
Validation Pipeline (wwPDB-VP) : 2.35.1

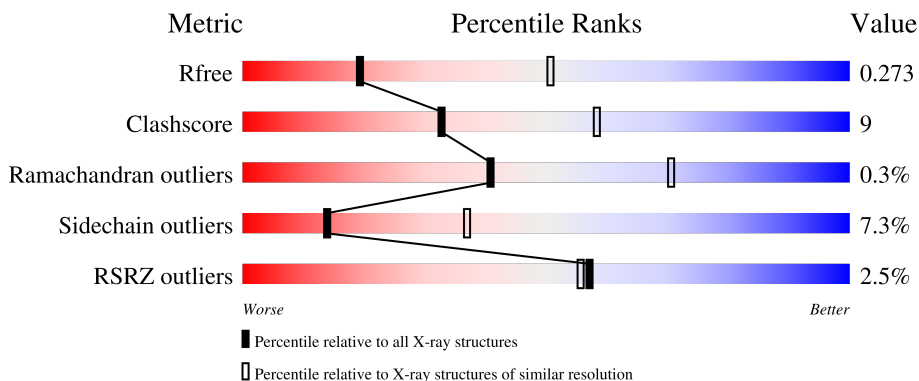
# 1 Overall quality at a glance

The following experimental techniques were used to determine the structure:

*X-RAY DIFFRACTION*

The reported resolution of this entry is 2.91 Å.

Percentile scores (ranging between 0-100) for global validation metrics of the entry are shown in the following graphic. The table shows the number of entries on which the scores are based.



Metric	Whole archive (#Entries)	Similar resolution (#Entries, resolution range(Å))
$R_{free}$	130704	2307 (2.94-2.90)
Clashscore	141614	2531 (2.94-2.90)
Ramachandran outliers	138981	2462 (2.94-2.90)
Sidechain outliers	138945	2464 (2.94-2.90)
RSRZ outliers	127900	2248 (2.94-2.90)

The table below summarises the geometric issues observed across the polymeric chains and their fit to the electron density. The red, orange, yellow and green segments of the lower bar indicate the fraction of residues that contain outliers for  $\geq 3$ , 2, 1 and 0 types of geometric quality criteria respectively. A grey segment represents the fraction of residues that are not modelled. The numeric value for each fraction is indicated below the corresponding segment, with a dot representing fractions  $\leq 5\%$ . The upper red bar (where present) indicates the fraction of residues that have poor fit to the electron density. The numeric value is given above the bar.

Mol	Chain	Length	Quality of chain
1	A	554	
1	B	554	

The following table lists non-polymeric compounds, carbohydrate monomers and non-standard residues in protein, DNA, RNA chains that are outliers for geometric or electron-density-fit criteria:

Mol	Type	Chain	Res	Chirality	Geometry	Clashes	Electron density
3	PO4	A	602	-	-	X	-

## 2 Entry composition i

There are 4 unique types of molecules in this entry. The entry contains 8038 atoms, of which 0 are hydrogens and 0 are deuteriums.

In the tables below, the ZeroOcc column contains the number of atoms modelled with zero occupancy, the AltConf column contains the number of residues with at least one atom in alternate conformation and the Trace column contains the number of residues modelled with at most 2 atoms.

- Molecule 1 is a protein called Cytosolic purine 5'-nucleotidase.

Mol	Chain	Residues	Atoms					ZeroOcc	AltConf	Trace
			Total	C	N	O	S			
1	A	475	3873	2504	641	708	20	0	0	0
1	B	474	3868	2501	643	705	19	0	0	0

There are 38 discrepancies between the modelled and reference sequences:

Chain	Residue	Modelled	Actual	Comment	Reference
A	-17	GLY	-	expression tag	UNP P49902
A	-16	SER	-	expression tag	UNP P49902
A	-15	SER	-	expression tag	UNP P49902
A	-14	HIS	-	expression tag	UNP P49902
A	-13	HIS	-	expression tag	UNP P49902
A	-12	HIS	-	expression tag	UNP P49902
A	-11	HIS	-	expression tag	UNP P49902
A	-10	HIS	-	expression tag	UNP P49902
A	-9	HIS	-	expression tag	UNP P49902
A	-8	SER	-	expression tag	UNP P49902
A	-7	SER	-	expression tag	UNP P49902
A	-6	GLY	-	expression tag	UNP P49902
A	-5	LEU	-	expression tag	UNP P49902
A	-4	VAL	-	expression tag	UNP P49902
A	-3	PRO	-	expression tag	UNP P49902
A	-2	ARG	-	expression tag	UNP P49902
A	-1	GLY	-	expression tag	UNP P49902
A	0	SER	-	expression tag	UNP P49902
A	52	ASN	ASP	engineered mutation	UNP P49902
B	-17	GLY	-	expression tag	UNP P49902
B	-16	SER	-	expression tag	UNP P49902
B	-15	SER	-	expression tag	UNP P49902
B	-14	HIS	-	expression tag	UNP P49902
B	-13	HIS	-	expression tag	UNP P49902
B	-12	HIS	-	expression tag	UNP P49902

*Continued on next page...*

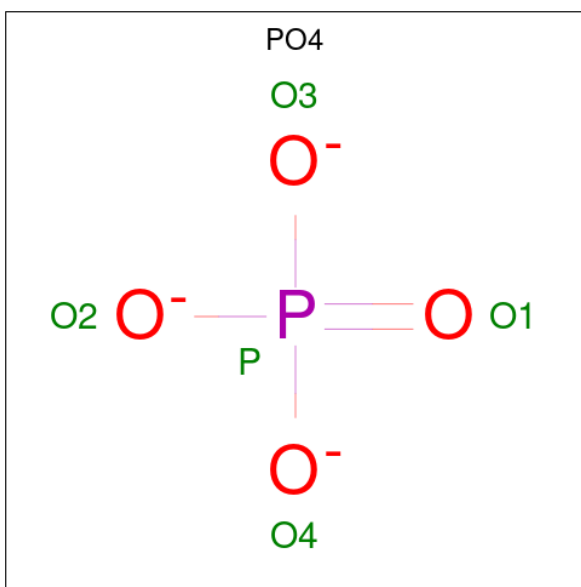
Continued from previous page...

Chain	Residue	Modelled	Actual	Comment	Reference
B	-11	HIS	-	expression tag	UNP P49902
B	-10	HIS	-	expression tag	UNP P49902
B	-9	HIS	-	expression tag	UNP P49902
B	-8	SER	-	expression tag	UNP P49902
B	-7	SER	-	expression tag	UNP P49902
B	-6	GLY	-	expression tag	UNP P49902
B	-5	LEU	-	expression tag	UNP P49902
B	-4	VAL	-	expression tag	UNP P49902
B	-3	PRO	-	expression tag	UNP P49902
B	-2	ARG	-	expression tag	UNP P49902
B	-1	GLY	-	expression tag	UNP P49902
B	0	SER	-	expression tag	UNP P49902
B	52	ASN	ASP	engineered mutation	UNP P49902

- Molecule 2 is MAGNESIUM ION (three-letter code: MG) (formula: Mg).

Mol	Chain	Residues	Atoms	ZeroOcc	AltConf
2	A	1	Total Mg 1 1	0	0
2	B	1	Total Mg 1 1	0	0

- Molecule 3 is PHOSPHATE ION (three-letter code: PO4) (formula: O<sub>4</sub>P).



Mol	Chain	Residues	Atoms			ZeroOcc	AltConf
3	A	1	Total	O	P	0	0
			5	4	1		
3	A	1	Total	O	P	0	0
			5	4	1		
3	B	1	Total	O	P	0	0
			5	4	1		
3	B	1	Total	O	P	0	0
			5	4	1		

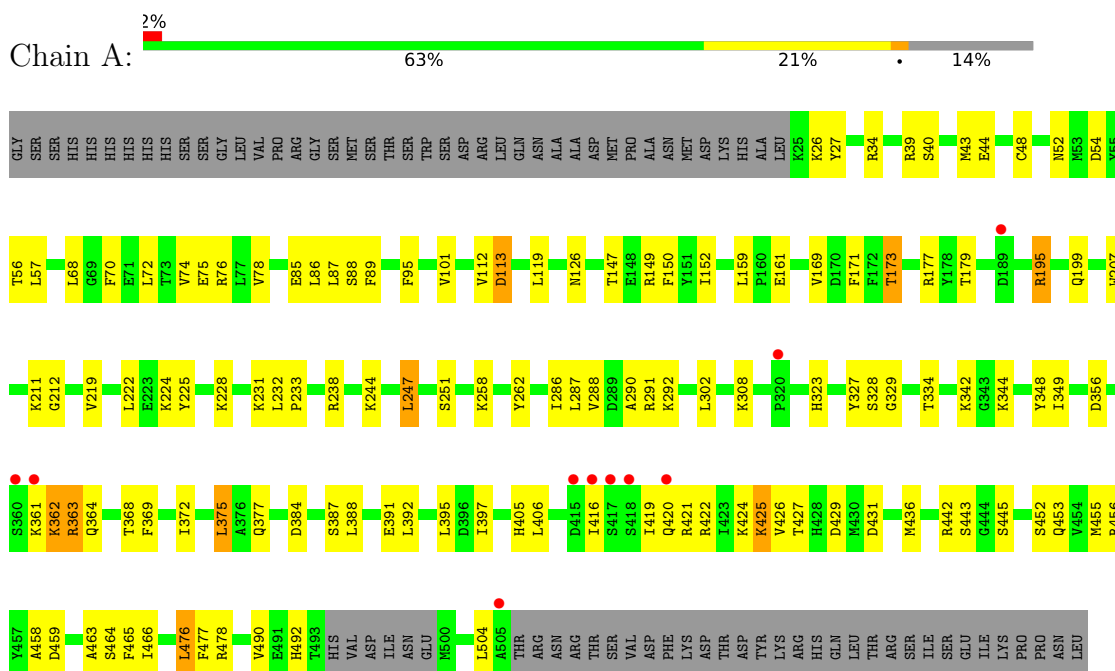
- Molecule 4 is water.

Mol	Chain	Residues	Atoms		ZeroOcc	AltConf
4	A	152	Total	O	0	0
			152	152		
4	B	123	Total	O	0	0
			123	123		

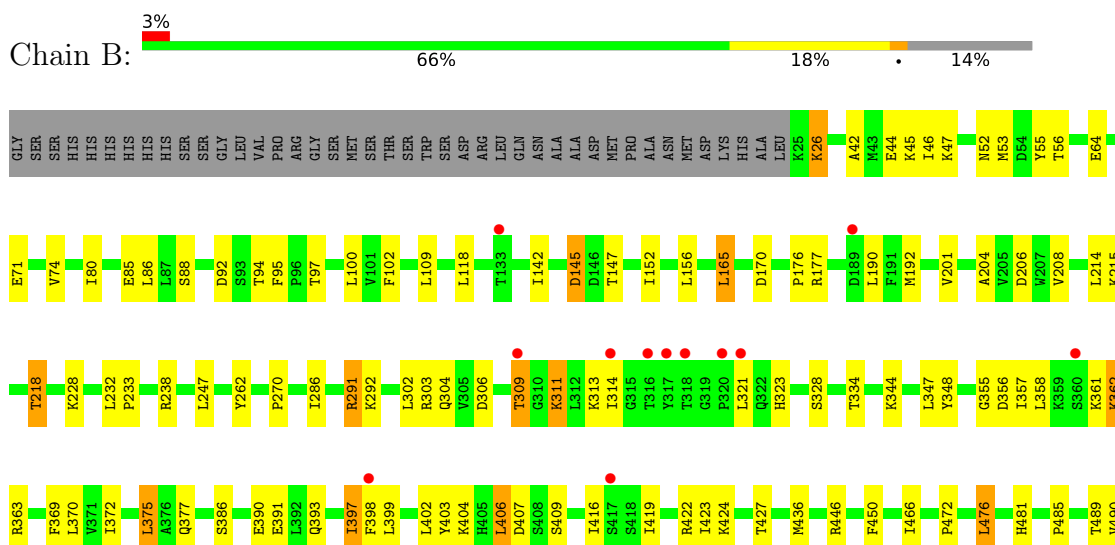
### 3 Residue-property plots

These plots are drawn for all protein, RNA, DNA and oligosaccharide chains in the entry. The first graphic for a chain summarises the proportions of the various outlier classes displayed in the second graphic. The second graphic shows the sequence view annotated by issues in geometry and electron density. Residues are color-coded according to the number of geometric quality criteria for which they contain at least one outlier: green = 0, yellow = 1, orange = 2 and red = 3 or more. A red dot above a residue indicates a poor fit to the electron density ( $RSRZ > 2$ ). Stretches of 2 or more consecutive residues without any outlier are shown as a green connector. Residues present in the sample, but not in the model, are shown in grey.

#### • Molecule 1: Cytosolic purine 5'-nucleotidase



#### • Molecule 1: Cytosolic purine 5'-nucleotidase



T493	HIS
	VAL
	ASP
	ILE
	ASN
	GLU
	MET
	GLU
	SER
P503	ASN
L504	ARG
A505	THR
T506	SER
F507	VAL
	ASP
	PHE
	LYS
	ASP
	THR
	ASP
	TYR
	LYS
	ARG
	HIS
	GLN
	LEU
	THR
	ARG
	SER
	ILE
	SER
	GLU
	ILE
	LYS
	PRO
	PRO
	ASN
	LEU



## 4 Data and refinement statistics

Property	Value	Source
Space group	C 1 2 1	Depositor
Cell constants a, b, c, $\alpha$ , $\beta$ , $\gamma$	144.56Å 124.15Å 90.74Å 90.00° 116.25° 90.00°	Depositor
Resolution (Å)	39.42 – 2.91 44.83 – 2.91	Depositor EDS
% Data completeness (in resolution range)	96.3 (39.42-2.91) 96.4 (44.83-2.91)	Depositor EDS
$R_{merge}$	0.11	Depositor
$R_{sym}$	(Not available)	Depositor
$\langle I/\sigma(I) \rangle$ <sup>1</sup>	2.12 (at 2.90Å)	Xtrriage
Refinement program	PHENIX (1.12_2829)	Depositor
R, $R_{free}$	0.181 , 0.264 0.180 , 0.273	Depositor DCC
$R_{free}$ test set	3067 reflections (10.08%)	wwPDB-VP
Wilson B-factor (Å <sup>2</sup> )	43.8	Xtrriage
Anisotropy	0.333	Xtrriage
Bulk solvent $k_{sol}$ (e/Å <sup>3</sup> ), $B_{sol}$ (Å <sup>2</sup> )	0.31 , 47.8	EDS
L-test for twinning <sup>2</sup>	$\langle  L  \rangle = 0.49$ , $\langle L^2 \rangle = 0.32$	Xtrriage
Estimated twinning fraction	No twinning to report.	Xtrriage
$F_o, F_c$ correlation	0.92	EDS
Total number of atoms	8038	wwPDB-VP
Average B, all atoms (Å <sup>2</sup> )	40.0	wwPDB-VP

Xtrriage's analysis on translational NCS is as follows: *The largest off-origin peak in the Patterson function is 18.93% of the height of the origin peak. No significant pseudotranslation is detected.*

<sup>1</sup>Intensities estimated from amplitudes.

<sup>2</sup>Theoretical values of  $\langle |L| \rangle$ ,  $\langle L^2 \rangle$  for acentric reflections are 0.5, 0.333 respectively for untwinned datasets, and 0.375, 0.2 for perfectly twinned datasets.

## 5 Model quality [i](#)

### 5.1 Standard geometry [i](#)

Bond lengths and bond angles in the following residue types are not validated in this section: MG, PO4

The Z score for a bond length (or angle) is the number of standard deviations the observed value is removed from the expected value. A bond length (or angle) with  $|Z| > 5$  is considered an outlier worth inspection. RMSZ is the root-mean-square of all Z scores of the bond lengths (or angles).

Mol	Chain	Bond lengths		Bond angles	
		RMSZ	# Z  >5	RMSZ	# Z  >5
1	A	0.45	0/3973	0.59	0/5365
1	B	0.42	0/3968	0.57	0/5358
All	All	0.44	0/7941	0.58	0/10723

There are no bond length outliers.

There are no bond angle outliers.

There are no chirality outliers.

There are no planarity outliers.

### 5.2 Too-close contacts [i](#)

In the following table, the Non-H and H(model) columns list the number of non-hydrogen atoms and hydrogen atoms in the chain respectively. The H(added) column lists the number of hydrogen atoms added and optimized by MolProbity. The Clashes column lists the number of clashes within the asymmetric unit, whereas Symm-Clashes lists symmetry-related clashes.

Mol	Chain	Non-H	H(model)	H(added)	Clashes	Symm-Clashes
1	A	3873	0	3820	75	0
1	B	3868	0	3820	71	0
2	A	1	0	0	0	0
2	B	1	0	0	0	0
3	A	10	0	0	2	0
3	B	10	0	0	1	0
4	A	152	0	0	5	0
4	B	123	0	0	7	0
All	All	8038	0	7640	134	0

The all-atom clashscore is defined as the number of clashes found per 1000 atoms (including hydrogen atoms). The all-atom clashscore for this structure is 9.

All (134) close contacts within the same asymmetric unit are listed below, sorted by their clash magnitude.

Atom-1	Atom-2	Interatomic distance (Å)	Clash overlap (Å)
1:B:92:ASP:OD2	1:B:94:THR:OG1	2.01	0.78
1:A:39:ARG:NH1	1:A:456:ARG:O	2.18	0.75
1:A:292:LYS:NZ	1:A:348:TYR:OH	2.20	0.75
1:B:485:PRO:O	1:B:489:THR:OG1	2.05	0.74
1:A:247:LEU:HD23	1:A:286:ILE:HG23	1.69	0.73
1:A:52:ASN:HB3	1:A:56:THR:OG1	1.90	0.71
1:A:397:ILE:HG12	1:B:26:LYS:HB3	1.72	0.70
1:B:407:ASP:OD2	4:B:701:HOH:O	2.10	0.69
1:A:453:GLN:HB3	1:A:456:ARG:HH21	1.59	0.68
1:B:399:LEU:HD13	1:B:419:ILE:HG21	1.76	0.67
1:B:52:ASN:OD1	1:B:292:LYS:NZ	2.27	0.66
1:A:224:LYS:HD3	1:A:225:TYR:CZ	2.35	0.62
1:B:206:ASP:OD2	4:B:702:HOH:O	2.16	0.61
1:B:304:GLN:HG2	1:B:313:LYS:HD2	1.82	0.61
1:B:247:LEU:HD23	1:B:286:ILE:HG23	1.83	0.59
1:A:388:LEU:HD22	1:A:426:VAL:HG13	1.82	0.59
1:A:425:LYS:NZ	1:A:429:ASP:OD1	2.26	0.59
1:B:95:PHE:HA	1:B:436:MET:HB2	1.84	0.59
1:A:302:LEU:HD13	1:A:334:THR:HG21	1.83	0.58
1:A:362:LYS:O	1:A:362:LYS:HE3	2.04	0.57
1:A:72:LEU:HA	1:A:75:GLU:HG2	1.86	0.57
1:A:361:LYS:HD3	1:A:363:ARG:HB2	1.88	0.56
1:A:416:ILE:HD12	1:B:476:LEU:HD12	1.88	0.56
1:A:52:ASN:ND2	3:A:602:PO4:O1	2.39	0.56
1:A:504:LEU:HD12	1:B:466:ILE:HB	1.87	0.55
1:B:190:LEU:H	1:B:190:LEU:HD12	1.72	0.55
1:B:292:LYS:NZ	1:B:348:TYR:OH	2.33	0.55
1:A:453:GLN:HB3	1:A:456:ARG:NH2	2.22	0.54
1:B:42:ALA:HB3	1:B:45:LYS:HE3	1.90	0.54
1:B:391:GLU:OE2	1:B:422:ARG:NH2	2.42	0.53
1:A:344:LYS:HG2	1:A:364:GLN:HG2	1.90	0.53
1:B:398:PHE:O	1:B:402:LEU:HG	2.10	0.52
1:A:476:LEU:HD12	1:B:416:ILE:HD12	1.91	0.52
1:B:423:ILE:O	1:B:427:THR:HG23	2.09	0.52
1:B:64:GLU:N	1:B:64:GLU:OE1	2.41	0.52
1:B:232:LEU:HB3	1:B:233:PRO:HD3	1.90	0.52
1:A:74:VAL:O	1:A:78:VAL:HG23	2.10	0.52
1:B:372:ILE:O	1:B:375:LEU:HB2	2.10	0.51
1:A:34:ARG:HH12	1:B:489:THR:HB	1.76	0.51
1:A:442:ARG:NH2	1:A:445:SER:O	2.39	0.50

*Continued on next page...*

*Continued from previous page...*

Atom-1	Atom-2	Interatomic distance (Å)	Clash overlap (Å)
1:B:344:LYS:HB2	4:B:746:HOH:O	2.11	0.50
1:A:68:LEU:HD22	1:A:225:TYR:CZ	2.47	0.50
1:A:26:LYS:HG2	1:A:27:TYR:N	2.27	0.50
1:B:424:LYS:HB3	1:B:424:LYS:NZ	2.27	0.49
1:A:95:PHE:HA	1:A:436:MET:HB2	1.92	0.49
1:A:405:HIS:ND1	4:A:705:HOH:O	2.35	0.49
1:B:74:VAL:HG13	1:B:86:LEU:HB3	1.93	0.49
1:B:204:ALA:O	1:B:208:VAL:HG23	2.12	0.49
1:B:102:PHE:HD1	1:B:109:LEU:HD23	1.77	0.49
1:A:119:LEU:HD13	1:A:443:SER:HB3	1.95	0.49
1:A:54:ASP:N	3:A:602:PO4:O3	2.40	0.49
1:A:416:ILE:O	1:A:420:GLN:HB2	2.13	0.49
1:A:149:ARG:HG2	1:A:150:PHE:CZ	2.47	0.49
1:A:34:ARG:HH22	1:B:489:THR:CB	2.26	0.49
1:A:445:SER:HA	1:B:481:HIS:NE2	2.27	0.49
1:A:231:LYS:HG3	4:A:813:HOH:O	2.13	0.48
1:A:361:LYS:HE2	1:A:363:ARG:NH2	2.29	0.48
1:B:145:ASP:OD1	1:B:145:ASP:N	2.46	0.48
1:A:195:ARG:NH2	1:A:199:GLN:OE1	2.47	0.48
1:B:361:LYS:HE2	1:B:363:ARG:HB2	1.95	0.48
1:A:48:CYS:HA	1:A:244:LYS:O	2.14	0.47
1:B:306:ASP:HB3	1:B:309:THR:HG23	1.95	0.47
1:B:118:LEU:HD11	1:B:142:ILE:HG23	1.96	0.47
1:A:169:VAL:O	1:A:173:THR:HB	2.13	0.47
1:B:303:ARG:HB2	1:B:328:SER:HB3	1.96	0.47
1:B:362:LYS:HE3	1:B:362:LYS:HB2	1.74	0.47
1:A:40:SER:HA	1:A:477:PHE:O	2.14	0.47
1:A:232:LEU:HB3	1:A:233:PRO:HD3	1.96	0.47
1:B:291:ARG:HH21	1:B:291:ARG:HB3	1.80	0.47
1:A:391:GLU:OE2	1:A:422:ARG:NH2	2.37	0.46
1:B:85:GLU:OE2	1:B:177:ARG:NH2	2.39	0.46
1:A:368:THR:N	1:A:459:ASP:OD2	2.47	0.46
1:B:357:ILE:HG23	1:B:358:LEU:HD22	1.97	0.46
1:A:464:SER:HB3	1:A:466:ILE:HG22	1.98	0.46
1:A:26:LYS:HB2	1:B:397:ILE:HG13	1.97	0.45
1:A:113:ASP:HB3	1:A:119:LEU:HD21	1.97	0.45
1:A:290:ALA:O	1:A:291:ARG:HB2	2.16	0.45
1:B:347:LEU:HD11	1:B:369:PHE:HB2	1.96	0.45
1:A:287:LEU:HA	1:A:327:TYR:O	2.16	0.45
1:A:424:LYS:HE3	1:A:424:LYS:HB3	1.69	0.45
1:B:165:LEU:HD13	1:B:201:VAL:HG11	1.98	0.45

*Continued on next page...*

*Continued from previous page...*

Atom-1	Atom-2	Interatomic distance (Å)	Clash overlap (Å)
1:A:492:HIS:HB3	1:B:386:SER:HB3	1.99	0.45
1:B:176:PRO:O	4:B:703:HOH:O	2.21	0.45
1:A:453:GLN:HG2	4:A:771:HOH:O	2.16	0.45
1:B:214:LEU:O	1:B:218:THR:OG1	2.35	0.45
1:B:52:ASN:HB3	1:B:56:THR:OG1	2.17	0.44
1:B:399:LEU:HA	1:B:399:LEU:HD12	1.73	0.44
1:A:27:TYR:CE2	1:B:404:LYS:HA	2.52	0.44
1:B:152:ILE:H	1:B:152:ILE:HD12	1.83	0.44
1:B:314:ILE:H	1:B:314:ILE:HG13	1.61	0.44
1:B:393:GLN:O	1:B:397:ILE:HD12	2.17	0.44
1:B:52:ASN:ND2	3:B:602:PO4:O1	2.49	0.44
1:A:207:TRP:O	1:A:212:GLY:N	2.50	0.44
1:A:395:LEU:HD22	1:A:419:ILE:HG13	2.00	0.44
1:A:74:VAL:HG13	1:A:86:LEU:HB3	2.00	0.44
1:A:222:LEU:HD13	1:A:262:TYR:HB2	2.00	0.43
1:A:445:SER:HA	1:B:481:HIS:CD2	2.52	0.43
1:A:368:THR:OG1	1:A:458:ALA:HA	2.18	0.43
1:B:403:TYR:HA	1:B:406:LEU:HD22	2.00	0.43
1:B:47:LYS:HD3	4:B:753:HOH:O	2.19	0.43
1:A:372:ILE:O	1:A:375:LEU:HB2	2.19	0.43
1:B:46:ILE:HD13	1:B:46:ILE:HA	1.90	0.43
1:B:370:LEU:HD23	1:B:372:ILE:HD11	2.01	0.43
1:A:349:ILE:HG21	1:A:465:PHE:CB	2.49	0.42
1:A:85:GLU:O	1:A:88:SER:HB2	2.19	0.42
1:A:361:LYS:HE2	1:A:363:ARG:CZ	2.50	0.42
1:B:304:GLN:HE21	1:B:313:LYS:HE3	1.84	0.42
1:A:75:GLU:HG3	1:A:76:ARG:N	2.34	0.42
1:A:219:VAL:HG11	1:A:258:LYS:HD3	2.02	0.42
1:B:55:TYR:CD1	1:B:156:LEU:HD13	2.55	0.42
1:B:228:LYS:HE2	1:B:262:TYR:O	2.20	0.42
1:B:311:LYS:HD2	1:B:311:LYS:HA	1.95	0.42
1:B:302:LEU:HD13	1:B:334:THR:HG21	2.02	0.42
1:B:450:PHE:HB2	4:B:732:HOH:O	2.19	0.42
1:A:78:VAL:HG21	1:A:87:LEU:HD22	2.02	0.42
1:A:54:ASP:OD1	1:A:251:SER:OG	2.38	0.42
1:A:287:LEU:HD21	1:A:329:GLY:O	2.20	0.41
1:A:288:VAL:O	1:A:328:SER:HA	2.20	0.41
1:B:419:ILE:O	1:B:423:ILE:HG13	2.20	0.41
1:A:375:LEU:HB3	1:A:463:ALA:HB2	2.02	0.41
1:A:392:LEU:HD21	1:A:427:THR:HG23	2.00	0.41
1:B:71:GLU:HG2	4:B:795:HOH:O	2.20	0.41

*Continued on next page...*

Continued from previous page...

Atom-1	Atom-2	Interatomic distance (Å)	Clash overlap (Å)
1:A:70:PHE:HZ	1:A:89:PHE:HB3	1.85	0.41
1:B:291:ARG:HB3	1:B:291:ARG:NH2	2.35	0.41
1:B:466:ILE:HD12	1:B:466:ILE:HA	1.82	0.41
1:A:57:LEU:HD23	1:A:465:PHE:CZ	2.56	0.41
1:B:361:LYS:HG2	1:B:363:ARG:H	1.86	0.41
1:A:101:VAL:HG13	1:A:150:PHE:HB3	2.02	0.41
1:A:126:ASN:OD1	4:A:702:HOH:O	2.22	0.41
1:A:406:LEU:HB3	1:B:472:PRO:HG3	2.03	0.41
1:B:97:THR:O	1:B:100:LEU:HG	2.20	0.40
1:B:422:ARG:HA	1:B:422:ARG:HD2	1.89	0.40
1:A:421:ARG:HG2	4:A:742:HOH:O	2.21	0.40
1:A:342:LYS:HB3	1:A:364:GLN:OE1	2.21	0.40

There are no symmetry-related clashes.

## 5.3 Torsion angles [i](#)

### 5.3.1 Protein backbone [i](#)

In the following table, the Percentiles column shows the percent Ramachandran outliers of the chain as a percentile score with respect to all X-ray entries followed by that with respect to entries of similar resolution.

The Analysed column shows the number of residues for which the backbone conformation was analysed, and the total number of residues.

Mol	Chain	Analysed	Favoured	Allowed	Outliers	Percentiles	
1	A	471/554 (85%)	446 (95%)	24 (5%)	1 (0%)	47	77
1	B	470/554 (85%)	448 (95%)	20 (4%)	2 (0%)	34	65
All	All	941/1108 (85%)	894 (95%)	44 (5%)	3 (0%)	41	70

All (3) Ramachandran outliers are listed below:

Mol	Chain	Res	Type
1	B	270	PRO
1	B	355	GLY
1	A	171	PHE

### 5.3.2 Protein sidechains

In the following table, the Percentiles column shows the percent sidechain outliers of the chain as a percentile score with respect to all X-ray entries followed by that with respect to entries of similar resolution.

The Analysed column shows the number of residues for which the sidechain conformation was analysed, and the total number of residues.

Mol	Chain	Analysed	Rotameric	Outliers	Percentiles	
1	A	424/496 (86%)	391 (92%)	33 (8%)	12	33
1	B	423/496 (85%)	394 (93%)	29 (7%)	15	40
All	All	847/992 (85%)	785 (93%)	62 (7%)	14	37

All (62) residues with a non-rotameric sidechain are listed below:

Mol	Chain	Res	Type
1	A	43	MET
1	A	44	GLU
1	A	112	VAL
1	A	113	ASP
1	A	147	THR
1	A	152	ILE
1	A	159	LEU
1	A	161	GLU
1	A	173	THR
1	A	177	ARG
1	A	179	THR
1	A	195	ARG
1	A	211	LYS
1	A	228	LYS
1	A	238	ARG
1	A	247	LEU
1	A	308	LYS
1	A	323	HIS
1	A	356	ASP
1	A	362	LYS
1	A	363	ARG
1	A	369	PHE
1	A	375	LEU
1	A	377	GLN
1	A	384	ASP
1	A	387	SER
1	A	425	LYS

*Continued on next page...*

*Continued from previous page...*

Mol	Chain	Res	Type
1	A	431	ASP
1	A	452	SER
1	A	455	MET
1	A	476	LEU
1	A	478	ARG
1	A	490	VAL
1	B	26	LYS
1	B	44	GLU
1	B	53	MET
1	B	80	ILE
1	B	88	SER
1	B	145	ASP
1	B	147	THR
1	B	165	LEU
1	B	170	ASP
1	B	192	MET
1	B	215	LYS
1	B	218	THR
1	B	238	ARG
1	B	291	ARG
1	B	309	THR
1	B	311	LYS
1	B	321	LEU
1	B	323	HIS
1	B	356	ASP
1	B	362	LYS
1	B	375	LEU
1	B	377	GLN
1	B	390	GLU
1	B	397	ILE
1	B	406	LEU
1	B	409	SER
1	B	446	ARG
1	B	476	LEU
1	B	490	VAL

Sometimes sidechains can be flipped to improve hydrogen bonding and reduce clashes. There are no such sidechains identified.

### 5.3.3 RNA

There are no RNA molecules in this entry.



## 5.4 Non-standard residues in protein, DNA, RNA chains [i](#)

There are no non-standard protein/DNA/RNA residues in this entry.

## 5.5 Carbohydrates [i](#)

There are no monosaccharides in this entry.

## 5.6 Ligand geometry [i](#)

Of 6 ligands modelled in this entry, 2 are monoatomic - leaving 4 for Mogul analysis.

In the following table, the Counts columns list the number of bonds (or angles) for which Mogul statistics could be retrieved, the number of bonds (or angles) that are observed in the model and the number of bonds (or angles) that are defined in the Chemical Component Dictionary. The Link column lists molecule types, if any, to which the group is linked. The Z score for a bond length (or angle) is the number of standard deviations the observed value is removed from the expected value. A bond length (or angle) with  $|Z| > 2$  is considered an outlier worth inspection. RMSZ is the root-mean-square of all Z scores of the bond lengths (or angles).

Mol	Type	Chain	Res	Link	Bond lengths			Bond angles		
					Counts	RMSZ	# Z  > 2	Counts	RMSZ	# Z  > 2
3	PO4	A	602	2	4,4,4	1.14	0	6,6,6	0.52	0
3	PO4	B	603	-	4,4,4	1.02	0	6,6,6	0.63	0
3	PO4	A	603	-	4,4,4	1.06	0	6,6,6	0.74	0
3	PO4	B	602	2	4,4,4	0.92	0	6,6,6	0.92	0

There are no bond length outliers.

There are no bond angle outliers.

There are no chirality outliers.

There are no torsion outliers.

There are no ring outliers.

2 monomers are involved in 3 short contacts:

Mol	Chain	Res	Type	Clashes	Symm-Clashes
3	A	602	PO4	2	0
3	B	602	PO4	1	0

## 5.7 Other polymers [i](#)

There are no such residues in this entry.

## 5.8 Polymer linkage issues

There are no chain breaks in this entry.

## 6 Fit of model and data

### 6.1 Protein, DNA and RNA chains

In the following table, the column labelled ‘#RSRZ > 2’ contains the number (and percentage) of RSRZ outliers, followed by percent RSRZ outliers for the chain as percentile scores relative to all X-ray entries and entries of similar resolution. The OWAB column contains the minimum, median, 95<sup>th</sup> percentile and maximum values of the occupancy-weighted average B-factor per residue. The column labelled ‘Q < 0.9’ lists the number of (and percentage) of residues with an average occupancy less than 0.9.

Mol	Chain	Analysed	<RSRZ>	#RSRZ>2	OWAB(Å <sup>2</sup> )	Q<0.9
1	A	475/554 (85%)	-0.14	10 (2%) 63 62	15, 35, 77, 141	0
1	B	474/554 (85%)	-0.13	14 (2%) 50 46	12, 35, 87, 155	0
All	All	949/1108 (85%)	-0.14	24 (2%) 57 56	12, 35, 81, 155	0

All (24) RSRZ outliers are listed below:

Mol	Chain	Res	Type	RSRZ
1	B	506	THR	5.6
1	B	360	SER	5.3
1	B	505	ALA	4.1
1	B	320	PRO	3.7
1	B	316	THR	3.7
1	A	415	ASP	3.6
1	A	417	SER	3.4
1	B	314	ILE	3.4
1	A	505	ALA	3.4
1	A	320	PRO	2.6
1	B	417	SER	2.5
1	B	321	LEU	2.5
1	B	318	THR	2.5
1	A	189	ASP	2.5
1	B	133	THR	2.4
1	B	189	ASP	2.3
1	A	360	SER	2.3
1	B	309	THR	2.2
1	A	361	LYS	2.1
1	A	420	GLN	2.1
1	B	398	PHE	2.1
1	A	416	ILE	2.0
1	A	418	SER	2.0
1	B	317	TYR	2.0

## 6.2 Non-standard residues in protein, DNA, RNA chains [i](#)

There are no non-standard protein/DNA/RNA residues in this entry.

## 6.3 Carbohydrates [i](#)

There are no monosaccharides in this entry.

## 6.4 Ligands [i](#)

In the following table, the Atoms column lists the number of modelled atoms in the group and the number defined in the chemical component dictionary. The B-factors column lists the minimum, median, 95<sup>th</sup> percentile and maximum values of B factors of atoms in the group. The column labelled 'Q< 0.9' lists the number of atoms with occupancy less than 0.9.

Mol	Type	Chain	Res	Atoms	RSCC	RSR	B-factors(Å <sup>2</sup> )	Q<0.9
2	MG	A	601	1/1	0.87	0.23	34,34,34,34	0
2	MG	B	601	1/1	0.96	0.22	28,28,28,28	0
3	PO4	B	602	5/5	0.97	0.17	39,39,52,60	0
3	PO4	A	603	5/5	0.98	0.13	10,30,41,43	0
3	PO4	A	602	5/5	0.98	0.16	32,36,42,49	0
3	PO4	B	603	5/5	0.99	0.10	10,16,28,32	0

## 6.5 Other polymers [i](#)

There are no such residues in this entry.