



Full wwPDB X-ray Structure Validation Report ⓘ

Sep 27, 2023 – 12:39 AM EDT

PDB ID : 6D0V
Title : Tryptophan synthase Q114A mutant in complex with inhibitor N-(4'-trifluoromethoxybenzenesulfonyl)-2-amino-1-ethylphosphate (F9F) at the alpha-site, aminoacrylate at the beta site, and cesium ion at the metal coordination site
Authors : Hilario, E.; Dunn, M.F.; Mueller, L.J.; Fan, L.
Deposited on : 2018-04-11
Resolution : 1.64 Å(reported)

This is a Full wwPDB X-ray Structure Validation Report for a publicly released PDB entry.

We welcome your comments at validation@mail.wwpdb.org

A user guide is available at

<https://www.wwpdb.org/validation/2017/XrayValidationReportHelp>

with specific help available everywhere you see the ⓘ symbol.

The types of validation reports are described at

<http://www.wwpdb.org/validation/2017/FAQs#types>.

The following versions of software and data (see [references ⓘ](#)) were used in the production of this report:

MolProbity : 4.02b-467
Mogul : 1.8.5 (274361), CSD as541be (2020)
Xtriage (Phenix) : 1.13
EDS : 2.35.1
buster-report : 1.1.7 (2018)
Percentile statistics : 20191225.v01 (using entries in the PDB archive December 25th 2019)
Refmac : 5.8.0158
CCP4 : 7.0.044 (Gargrove)
Ideal geometry (proteins) : Engh & Huber (2001)
Ideal geometry (DNA, RNA) : Parkinson et al. (1996)
Validation Pipeline (wwPDB-VP) : 2.35.1

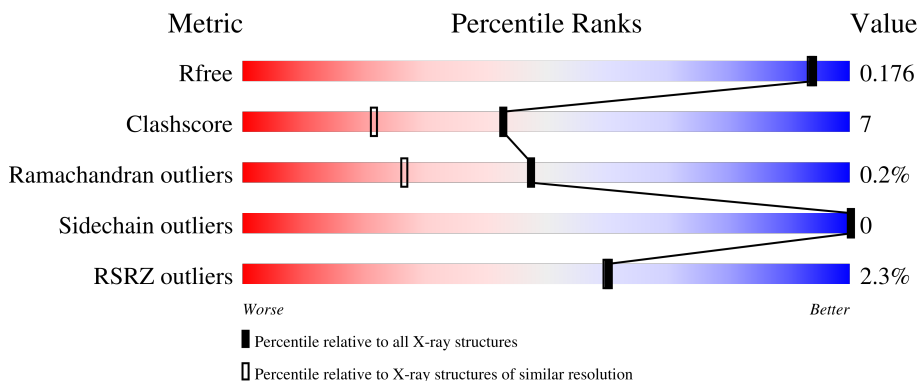
1 Overall quality at a glance

The following experimental techniques were used to determine the structure:

X-RAY DIFFRACTION

The reported resolution of this entry is 1.64 Å.

Percentile scores (ranging between 0-100) for global validation metrics of the entry are shown in the following graphic. The table shows the number of entries on which the scores are based.



Metric	Whole archive (#Entries)	Similar resolution (#Entries, resolution range(Å))
R_{free}	130704	3122 (1.66-1.62)
Clashscore	141614	3268 (1.66-1.62)
Ramachandran outliers	138981	3215 (1.66-1.62)
Sidechain outliers	138945	3215 (1.66-1.62)
RSRZ outliers	127900	3079 (1.66-1.62)

The table below summarises the geometric issues observed across the polymeric chains and their fit to the electron density. The red, orange, yellow and green segments of the lower bar indicate the fraction of residues that contain outliers for ≥ 3 , 2, 1 and 0 types of geometric quality criteria respectively. A grey segment represents the fraction of residues that are not modelled. The numeric value for each fraction is indicated below the corresponding segment, with a dot representing fractions $\leq 5\%$. The upper red bar (where present) indicates the fraction of residues that have poor fit to the electron density. The numeric value is given above the bar.

Mol	Chain	Length	Quality of chain
1	A	268	 3% 91% 8%
2	B	395	 2% 91% 9%

The following table lists non-polymeric compounds, carbohydrate monomers and non-standard residues in protein, DNA, RNA chains that are outliers for geometric or electron-density-fit criteria:

Mol	Type	Chain	Res	Chirality	Geometry	Clashes	Electron density
3	DMS	A	302	-	-	X	-
3	DMS	B	408	-	-	X	-

2 Entry composition [i](#)

There are 11 unique types of molecules in this entry. The entry contains 6131 atoms, of which 0 are hydrogens and 0 are deuteriums.

In the tables below, the ZeroOcc column contains the number of atoms modelled with zero occupancy, the AltConf column contains the number of residues with at least one atom in alternate conformation and the Trace column contains the number of residues modelled with at most 2 atoms.

- Molecule 1 is a protein called Tryptophan synthase alpha chain.

Mol	Chain	Residues	Atoms					ZeroOcc	AltConf	Trace
			Total	C	N	O	S			
1	A	268	2082	1318	363	393	8	0	9	1

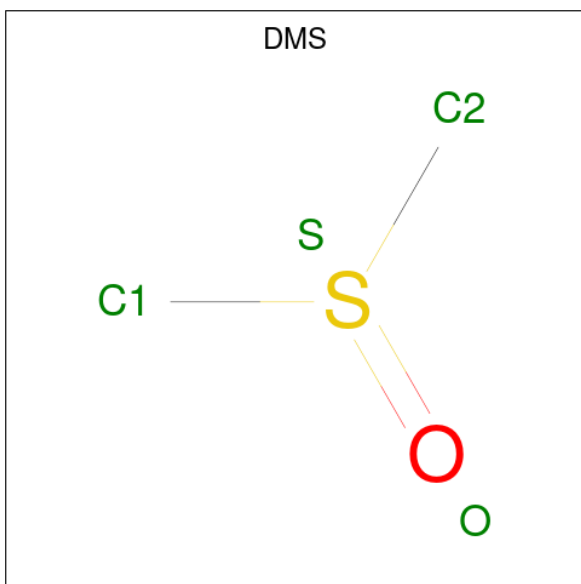
- Molecule 2 is a protein called Tryptophan synthase beta chain.

Mol	Chain	Residues	Atoms					ZeroOcc	AltConf	Trace
			Total	C	N	O	S			
2	B	394	3086	1936	542	588	20	0	13	0

There are 2 discrepancies between the modelled and reference sequences:

Chain	Residue	Modelled	Actual	Comment	Reference
B	114	ALA	GLN	engineered mutation	UNP P0A2K1
B	395	GLU	-	expression tag	UNP P0A2K1

- Molecule 3 is DIMETHYL SULFOXIDE (three-letter code: DMS) (formula: C₂H₆OS).

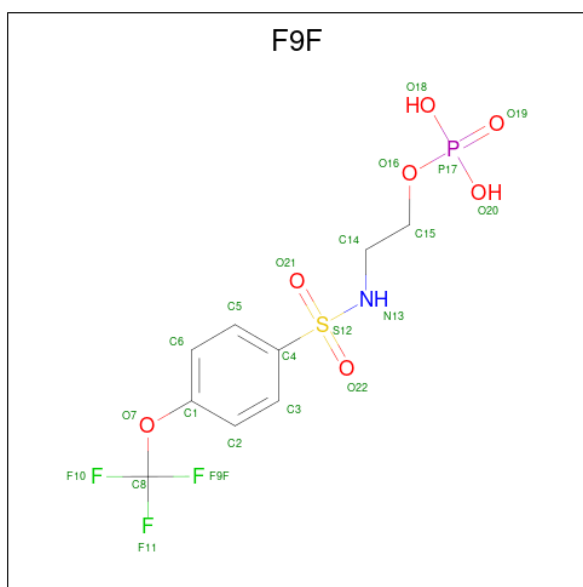


Mol	Chain	Residues	Atoms	ZeroOcc	AltConf
3	A	1	Total C O S 4 2 1 1	0	0
3	A	1	Total C O S 4 2 1 1	0	0
3	A	1	Total C O S 4 2 1 1	0	0
3	A	1	Total C O S 4 2 1 1	0	0
3	A	1	Total C O S 4 2 1 1	0	0
3	B	1	Total C O S 4 2 1 1	0	0
3	B	1	Total C O S 4 2 1 1	0	0
3	B	1	Total C O S 4 2 1 1	0	0
3	B	1	Total C O S 4 2 1 1	0	0
3	B	1	Total C O S 4 2 1 1	0	0
3	B	1	Total C O S 4 2 1 1	0	0
3	B	1	Total C O S 4 2 1 1	0	0
3	B	1	Total C O S 4 2 1 1	0	0
3	B	1	Total C O S 4 2 1 1	0	0
3	B	1	Total C O S 4 2 1 1	0	0
3	B	1	Total C O S 4 2 1 1	0	0

- Molecule 4 is CHLORIDE ION (three-letter code: CL) (formula: Cl).

Mol	Chain	Residues	Atoms	ZeroOcc	AltConf
4	A	2	Total Cl 2 2	0	0
4	B	3	Total Cl 3 3	0	0

- Molecule 5 is 2-([4-(TRIFLUOROMETHOXY)PHENYL]SULFONYL)AMINO)ETHYL DIHYDROGEN PHOSPHATE (three-letter code: F9F) (formula: C₉H₁₁F₃NO₇PS).



Mol	Chain	Residues	Atoms						ZeroOcc	AltConf	
			Total	C	F	N	O	P			S
5	A	1	22	9	3	1	7	1	1	0	0

- Molecule 6 is 1,2-ETHANEDIOL (three-letter code: EDO) (formula: C₂H₆O₂).



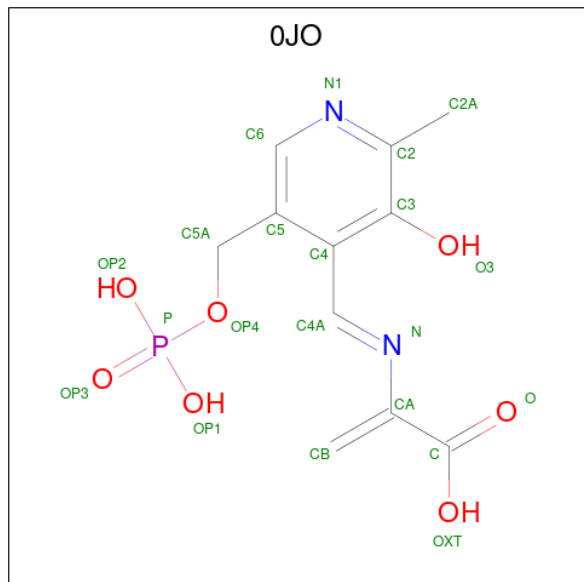
Mol	Chain	Residues	Atoms		ZeroOcc	AltConf
			Total	C O		
6	A	1	4	2 2	0	0
6	B	1	4	2 2	0	0
6	B	1	4	2 2	0	0

Continued on next page...

Continued from previous page...

Mol	Chain	Residues	Atoms			ZeroOcc	AltConf
6	B	1	Total	C	O	0	0
			4	2	2		
6	B	1	Total	C	O	0	0
			4	2	2		
6	B	1	Total	C	O	0	0
			4	2	2		
6	B	1	Total	C	O	0	0
			4	2	2		

- Molecule 7 is 2-[(E)-{3-hydroxy-2-methyl-5-[(phosphonoxy)methyl]pyridin-4-yl}methylidene]amino}prop-2-enoic acid (three-letter code: 0JO) (formula: C₁₁H₁₃N₂O₇P).

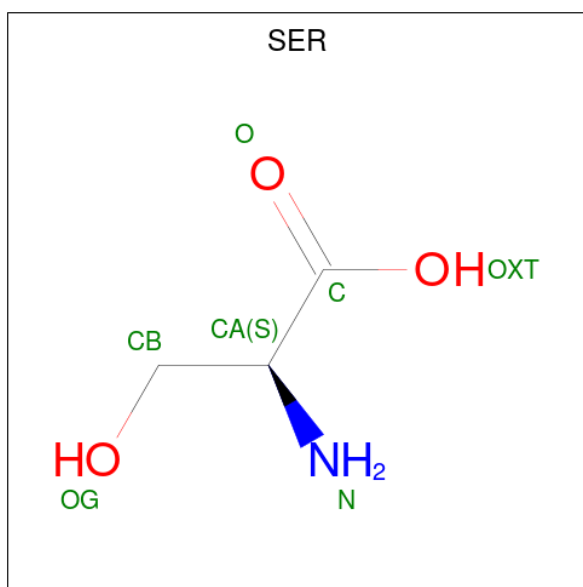


Mol	Chain	Residues	Atoms					ZeroOcc	AltConf
7	B	1	Total	C	N	O	P	0	0
			21	11	2	7	1		

- Molecule 8 is CESIUM ION (three-letter code: CS) (formula: Cs).

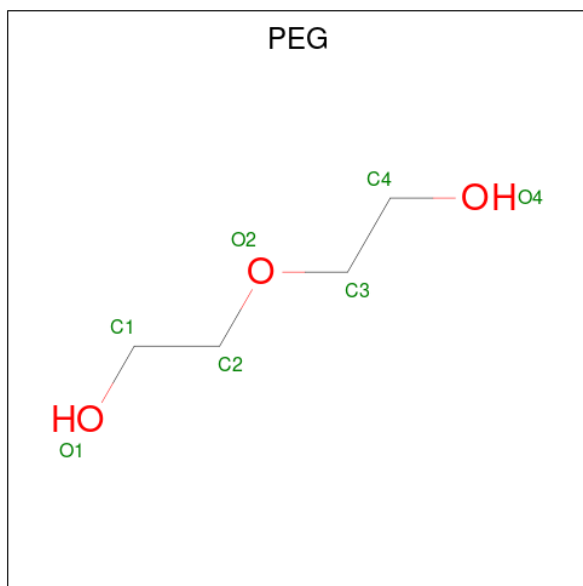
Mol	Chain	Residues	Atoms		ZeroOcc	AltConf
8	B	3	Total	Cs	0	1
			4	4		

- Molecule 9 is SERINE (three-letter code: SER) (formula: C₃H₇NO₃).



Mol	Chain	Residues	Atoms			ZeroOcc	AltConf	
			Total	C	N			O
9	B	1	7	3	1	3	0	0

- Molecule 10 is DI(HYDROXYETHYL)ETHER (three-letter code: PEG) (formula: $C_4H_{10}O_3$).



Mol	Chain	Residues	Atoms			ZeroOcc	AltConf
			Total	C	O		
10	B	1	7	4	3	0	0
10	B	1	7	4	3	0	0

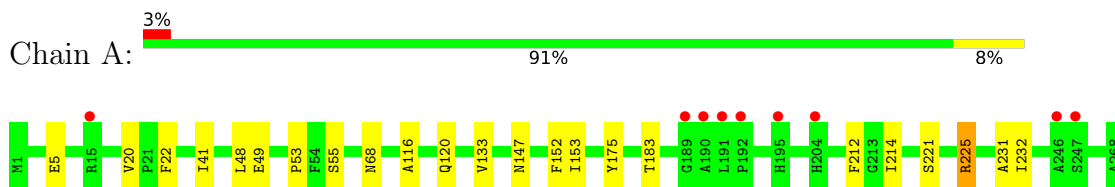
- Molecule 11 is water.

Mol	Chain	Residues	Atoms		ZeroOcc	AltConf
11	A	283	Total 300	O 300	0	16
11	B	461	Total 494	O 494	0	33

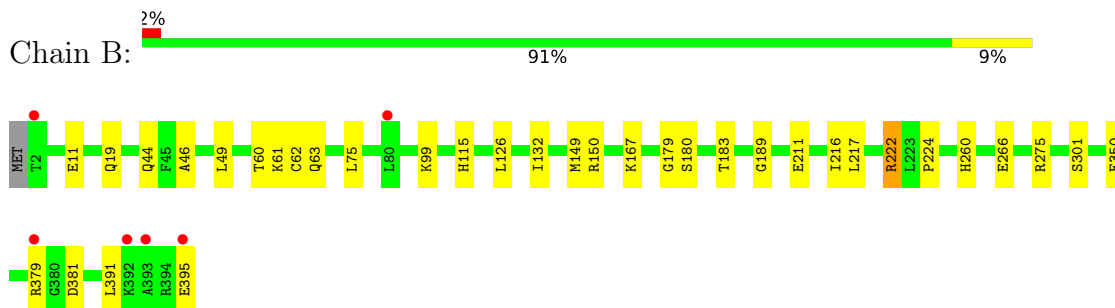
3 Residue-property plots [i](#)

These plots are drawn for all protein, RNA, DNA and oligosaccharide chains in the entry. The first graphic for a chain summarises the proportions of the various outlier classes displayed in the second graphic. The second graphic shows the sequence view annotated by issues in geometry and electron density. Residues are color-coded according to the number of geometric quality criteria for which they contain at least one outlier: green = 0, yellow = 1, orange = 2 and red = 3 or more. A red dot above a residue indicates a poor fit to the electron density ($RSRZ > 2$). Stretches of 2 or more consecutive residues without any outlier are shown as a green connector. Residues present in the sample, but not in the model, are shown in grey.

- Molecule 1: Tryptophan synthase alpha chain



- Molecule 2: Tryptophan synthase beta chain



4 Data and refinement statistics

Property	Value	Source
Space group	C 1 2 1	Depositor
Cell constants a, b, c, α , β , γ	183.73Å 60.88Å 67.32Å 90.00° 94.87° 90.00°	Depositor
Resolution (Å)	37.32 – 1.64 37.29 – 1.64	Depositor EDS
% Data completeness (in resolution range)	89.6 (37.32-1.64) 89.6 (37.29-1.64)	Depositor EDS
R_{merge}	(Not available)	Depositor
R_{sym}	0.06	Depositor
$\langle I/\sigma(I) \rangle$ ¹	3.23 (at 1.64Å)	Xtrriage
Refinement program	REFMAC	Depositor
R, R_{free}	0.130 , 0.175 0.130 , 0.176	Depositor DCC
R_{free} test set	4044 reflections (4.97%)	wwPDB-VP
Wilson B-factor (Å ²)	16.7	Xtrriage
Anisotropy	0.268	Xtrriage
Bulk solvent k_{sol} (e/Å ³), B_{sol} (Å ²)	0.32 , 56.5	EDS
L-test for twinning ²	$\langle L \rangle = 0.50$, $\langle L^2 \rangle = 0.33$	Xtrriage
Estimated twinning fraction	No twinning to report.	Xtrriage
F_o, F_c correlation	0.98	EDS
Total number of atoms	6131	wwPDB-VP
Average B, all atoms (Å ²)	21.0	wwPDB-VP

Xtrriage's analysis on translational NCS is as follows: *The largest off-origin peak in the Patterson function is 6.49% of the height of the origin peak. No significant pseudotranslation is detected.*

¹Intensities estimated from amplitudes.

²Theoretical values of $\langle |L| \rangle$, $\langle L^2 \rangle$ for acentric reflections are 0.5, 0.333 respectively for untwinned datasets, and 0.375, 0.2 for perfectly twinned datasets.

5 Model quality i

5.1 Standard geometry i

Bond lengths and bond angles in the following residue types are not validated in this section: 0JO, EDO, CS, F9F, CL, PEG, DMS

The Z score for a bond length (or angle) is the number of standard deviations the observed value is removed from the expected value. A bond length (or angle) with $|Z| > 5$ is considered an outlier worth inspection. RMSZ is the root-mean-square of all Z scores of the bond lengths (or angles).

Mol	Chain	Bond lengths		Bond angles	
		RMSZ	# $ Z > 5$	RMSZ	# $ Z > 5$
1	A	0.43	2/2122 (0.1%)	0.73	3/2885 (0.1%)
2	B	0.49	0/3144	0.75	0/4246
All	All	0.47	2/5266 (0.0%)	0.74	3/7131 (0.0%)

Chiral center outliers are detected by calculating the chiral volume of a chiral center and verifying if the center is modelled as a planar moiety or with the opposite hand. A planarity outlier is detected by checking planarity of atoms in a peptide group, atoms in a mainchain group or atoms of a sidechain that are expected to be planar.

Mol	Chain	#Chirality outliers	#Planarity outliers
2	B	0	1

All (2) bond length outliers are listed below:

Mol	Chain	Res	Type	Atoms	Z	Observed(Å)	Ideal(Å)
1	A	225	ARG	NE-CZ	6.17	1.41	1.33
1	A	225	ARG	CZ-NH1	5.54	1.40	1.33

All (3) bond angle outliers are listed below:

Mol	Chain	Res	Type	Atoms	Z	Observed(°)	Ideal(°)
1	A	225	ARG	NE-CZ-NH2	-14.81	112.90	120.30
1	A	225	ARG	NH1-CZ-NH2	6.97	127.06	119.40
1	A	225	ARG	NE-CZ-NH1	-6.66	116.97	120.30

There are no chirality outliers.

All (1) planarity outliers are listed below:

Mol	Chain	Res	Type	Group
2	B	222	ARG	Sidechain

5.2 Too-close contacts [i](#)

In the following table, the Non-H and H(model) columns list the number of non-hydrogen atoms and hydrogen atoms in the chain respectively. The H(added) column lists the number of hydrogen atoms added and optimized by MolProbity. The Clashes column lists the number of clashes within the asymmetric unit, whereas Symm-Clashes lists symmetry-related clashes.

Mol	Chain	Non-H	H(model)	H(added)	Clashes	Symm-Clashes
1	A	2082	0	2078	20	0
2	B	3086	0	3056	43	0
3	A	20	0	30	6	0
3	B	44	0	65	11	0
4	A	2	0	0	0	0
4	B	3	0	0	0	0
5	A	22	0	9	1	0
6	A	4	0	6	3	0
6	B	28	0	42	1	0
7	B	21	0	9	0	0
8	B	4	0	0	1	0
9	B	7	0	4	2	0
10	B	14	0	20	6	0
11	A	300	0	0	3	0
11	B	494	0	0	26	0
All	All	6131	0	5319	73	0

The all-atom clashscore is defined as the number of clashes found per 1000 atoms (including hydrogen atoms). The all-atom clashscore for this structure is 7.

All (73) close contacts within the same asymmetric unit are listed below, sorted by their clash magnitude.

Atom-1	Atom-2	Interatomic distance (Å)	Clash overlap (Å)
2:B:63[B]:GLN:HG3	11:B:790[B]:HOH:O	1.31	1.25
8:B:403:CS:CS	11:B:762[B]:HOH:O	2.01	1.06
3:B:408:DMS:C2	11:B:894:HOH:O	2.09	1.00
1:A:147[B]:ASN:ND2	3:A:302:DMS:C1	2.28	0.96
1:A:147[B]:ASN:HD22	3:A:302:DMS:H12	1.32	0.94
2:B:217[B]:LEU:HD11	11:B:925:HOH:O	1.75	0.86
1:A:147[B]:ASN:ND2	3:A:302:DMS:H13	1.93	0.82
2:B:63[B]:GLN:CG	11:B:790[B]:HOH:O	2.03	0.81

Continued on next page...

Continued from previous page...

Atom-1	Atom-2	Interatomic distance (Å)	Clash overlap (Å)
1:A:147[B]:ASN:ND2	3:A:302:DMS:H12	1.92	0.81
2:B:217[B]:LEU:HD21	11:B:925:HOH:O	1.81	0.80
3:B:408:DMS:H22	11:B:894:HOH:O	1.73	0.79
2:B:222:ARG:NH1	11:B:502:HOH:O	2.16	0.76
1:A:116:ALA:O	1:A:120[B]:GLN:HG3	1.85	0.76
6:A:309:EDO:H11	2:B:179:GLY:CA	2.20	0.72
2:B:11[A]:GLU:OE2	11:B:501:HOH:O	2.12	0.67
2:B:60:THR:HG23	10:B:427:PEG:H21	1.77	0.67
1:A:133[A]:VAL:HG12	1:A:152:PHE:CD2	2.32	0.64
2:B:61:LYS:O	10:B:427:PEG:H32	1.99	0.63
2:B:167:LYS:NZ	11:B:505:HOH:O	2.31	0.63
6:A:309:EDO:H11	2:B:179:GLY:HA3	1.82	0.62
2:B:183:THR:OG1	10:B:428:PEG:H22	1.99	0.62
2:B:180:SER:HA	10:B:428:PEG:H11	1.80	0.62
2:B:217[B]:LEU:HG	11:B:738:HOH:O	2.00	0.61
1:A:214[B]:ILE:HD13	1:A:231:ALA:HB1	1.83	0.60
1:A:221:SER:HB3	1:A:225:ARG:NH2	2.19	0.57
2:B:275:ARG:HG2	11:B:671:HOH:O	2.03	0.57
2:B:62[B]:CYS:SG	2:B:75:LEU:CD1	2.94	0.56
2:B:301[C]:SER:OG	2:B:350:GLU:HG3	2.05	0.56
1:A:5:GLU:HG3	11:A:509:HOH:O	2.05	0.55
2:B:216[A]:ILE:HG21	2:B:224:PRO:HD3	1.89	0.54
2:B:211:GLU:HG2	6:B:420:EDO:H21	1.90	0.53
1:A:225:ARG:HD2	11:A:624[A]:HOH:O	2.09	0.52
2:B:217[B]:LEU:CG	11:B:925:HOH:O	2.56	0.52
2:B:99:LYS:NZ	11:B:509:HOH:O	2.42	0.52
3:B:411:DMS:C2	11:B:560:HOH:O	2.57	0.52
2:B:62[B]:CYS:SG	2:B:75:LEU:HD11	2.51	0.50
2:B:150:ARG:HH21	3:B:414:DMS:C2	2.24	0.50
2:B:46:ALA:HA	3:B:408:DMS:H21	1.94	0.50
1:A:153:ILE:HD13	1:A:175:TYR:HB3	1.92	0.50
2:B:62[B]:CYS:SG	2:B:75:LEU:HG	2.52	0.49
2:B:391:LEU:O	2:B:395:GLU:N	2.45	0.49
2:B:132:ILE:HD13	2:B:149:MET:SD	2.53	0.49
9:B:426:SER:HB3	11:B:832:HOH:O	2.12	0.48
3:B:408:DMS:H21	11:B:894:HOH:O	1.95	0.48
2:B:61:LYS:O	10:B:427:PEG:C3	2.61	0.48
2:B:216[A]:ILE:HG23	11:B:738:HOH:O	2.14	0.47
2:B:379[B]:ARG:HD2	2:B:381:ASP:OD1	2.14	0.47
3:B:407:DMS:C2	11:B:517:HOH:O	2.62	0.47
2:B:217[B]:LEU:CD1	11:B:925:HOH:O	2.47	0.47

Continued on next page...

Continued from previous page...

Atom-1	Atom-2	Interatomic distance (Å)	Clash overlap (Å)
2:B:179:GLY:O	10:B:428:PEG:H31	2.16	0.46
2:B:61:LYS:HE2	2:B:63[B]:GLN:OE1	2.15	0.46
2:B:217[B]:LEU:CD2	11:B:925:HOH:O	2.51	0.45
3:B:407:DMS:H21	11:B:517:HOH:O	2.17	0.44
3:B:411:DMS:H21	11:B:560:HOH:O	2.16	0.44
1:A:22:PHE:HA	1:A:49:GLU:O	2.18	0.43
1:A:183:THR:CG2	5:A:308:F9F:H142	2.49	0.43
1:A:55:SER:O	9:B:426:SER:HA	2.19	0.43
6:A:309:EDO:H11	2:B:179:GLY:HA2	1.98	0.42
2:B:260:HIS:HD2	2:B:266:GLU:OE2	2.02	0.42
2:B:115:HIS:CE1	2:B:189:GLY:HA2	2.54	0.42
1:A:133[A]:VAL:HG12	1:A:152:PHE:CE2	2.54	0.42
3:A:301:DMS:H13	11:B:780:HOH:O	2.19	0.42
2:B:49:LEU:HD12	3:B:408:DMS:H23	2.01	0.42
1:A:133[B]:VAL:HG23	2:B:19:GLN:OE1	2.19	0.42
1:A:221:SER:HB3	1:A:225:ARG:HH22	1.82	0.42
2:B:99:LYS:HD2	2:B:126:LEU:HB3	2.02	0.41
1:A:53:PRO:HA	1:A:68:ASN:OD1	2.20	0.41
2:B:150:ARG:HD2	3:B:414:DMS:H11	2.01	0.41
2:B:44[A]:GLN:CG	11:B:710[A]:HOH:O	2.68	0.41
3:A:301:DMS:C1	11:A:656:HOH:O	2.69	0.40
1:A:20:VAL:O	1:A:232:ILE:HA	2.21	0.40
1:A:41:ILE:HD11	1:A:48:LEU:HD11	2.03	0.40
2:B:260:HIS:HE1	11:B:865:HOH:O	2.04	0.40

There are no symmetry-related clashes.

5.3 Torsion angles [i](#)

5.3.1 Protein backbone [i](#)

In the following table, the Percentiles column shows the percent Ramachandran outliers of the chain as a percentile score with respect to all X-ray entries followed by that with respect to entries of similar resolution.

The Analysed column shows the number of residues for which the backbone conformation was analysed, and the total number of residues.

Mol	Chain	Analysed	Favoured	Allowed	Outliers	Percentiles
1	A	275/268 (103%)	271 (98%)	3 (1%)	1 (0%)	34 15

Continued on next page...

Continued from previous page...

Mol	Chain	Analysed	Favoured	Allowed	Outliers	Percentiles	
2	B	405/395 (102%)	397 (98%)	8 (2%)	0	100	100
All	All	680/663 (103%)	668 (98%)	11 (2%)	1 (0%)	47	29

All (1) Ramachandran outliers are listed below:

Mol	Chain	Res	Type
1	A	212	PHE

5.3.2 Protein sidechains [i](#)

In the following table, the Percentiles column shows the percent sidechain outliers of the chain as a percentile score with respect to all X-ray entries followed by that with respect to entries of similar resolution.

The Analysed column shows the number of residues for which the sidechain conformation was analysed, and the total number of residues.

Mol	Chain	Analysed	Rotameric	Outliers	Percentiles	
1	A	217/208 (104%)	217 (100%)	0	100	100
2	B	321/309 (104%)	321 (100%)	0	100	100
All	All	538/517 (104%)	538 (100%)	0	100	100

There are no protein residues with a non-rotameric sidechain to report.

Sometimes sidechains can be flipped to improve hydrogen bonding and reduce clashes. All (1) such sidechains are listed below:

Mol	Chain	Res	Type
1	A	187	ASN

5.3.3 RNA [i](#)

There are no RNA molecules in this entry.

5.4 Non-standard residues in protein, DNA, RNA chains [i](#)

There are no non-standard protein/DNA/RNA residues in this entry.

5.5 Carbohydrates [i](#)

There are no monosaccharides in this entry.

5.6 Ligand geometry [i](#)

Of 38 ligands modelled in this entry, 9 are monoatomic - leaving 29 for Mogul analysis.

In the following table, the Counts columns list the number of bonds (or angles) for which Mogul statistics could be retrieved, the number of bonds (or angles) that are observed in the model and the number of bonds (or angles) that are defined in the Chemical Component Dictionary. The Link column lists molecule types, if any, to which the group is linked. The Z score for a bond length (or angle) is the number of standard deviations the observed value is removed from the expected value. A bond length (or angle) with $|Z| > 2$ is considered an outlier worth inspection. RMSZ is the root-mean-square of all Z scores of the bond lengths (or angles).

Mol	Type	Chain	Res	Link	Bond lengths			Bond angles		
					Counts	RMSZ	# Z > 2	Counts	RMSZ	# Z > 2
9	SER	B	426	-	5,6,6	0.83	0	5,7,7	2.18	2 (40%)
3	DMS	A	305	-	3,3,3	0.22	0	3,3,3	0.26	0
3	DMS	B	410	-	3,3,3	0.44	0	3,3,3	1.19	0
3	DMS	B	406	-	3,3,3	0.93	0	3,3,3	1.03	0
3	DMS	A	304	-	3,3,3	0.52	0	3,3,3	0.72	0
3	DMS	B	407	-	3,3,3	0.52	0	3,3,3	0.64	0
6	EDO	B	423	-	3,3,3	0.58	0	2,2,2	0.81	0
3	DMS	B	415	-	3,3,3	0.47	0	3,3,3	0.67	0
6	EDO	B	420	-	3,3,3	1.15	0	2,2,2	0.88	0
3	DMS	B	408	-	3,3,3	0.60	0	3,3,3	0.81	0
6	EDO	B	421	-	3,3,3	0.55	0	2,2,2	0.84	0
6	EDO	B	419	-	3,3,3	0.46	0	2,2,2	0.68	0
3	DMS	B	414	-	3,3,3	0.58	0	3,3,3	0.67	0
3	DMS	A	303	-	3,3,3	0.41	0	3,3,3	0.84	0
3	DMS	A	301	-	3,3,3	0.52	0	3,3,3	0.80	0
3	DMS	B	409	-	3,3,3	0.45	0	3,3,3	0.46	0
3	DMS	B	405	-	3,3,3	0.26	0	3,3,3	0.45	0
6	EDO	A	309	-	3,3,3	0.30	0	2,2,2	1.32	0
10	PEG	B	428	-	6,6,6	0.52	0	5,5,5	0.53	0
6	EDO	B	422	-	3,3,3	0.53	0	2,2,2	0.47	0
7	OJO	B	401	-	20,21,21	0.93	2 (10%)	23,30,30	0.73	0
5	F9F	A	308	-	22,22,22	1.92	3 (13%)	32,33,33	1.42	4 (12%)
3	DMS	B	413	-	3,3,3	0.52	0	3,3,3	0.63	0
6	EDO	B	424	-	3,3,3	0.82	0	2,2,2	0.61	0
3	DMS	B	412	-	3,3,3	0.44	0	3,3,3	0.90	0
3	DMS	B	411	-	3,3,3	0.15	0	3,3,3	0.72	0
10	PEG	B	427	-	6,6,6	0.31	0	5,5,5	0.54	0

Mol	Type	Chain	Res	Link	Bond lengths			Bond angles		
					Counts	RMSZ	# Z > 2	Counts	RMSZ	# Z > 2
3	DMS	A	302	-	3,3,3	0.75	0	3,3,3	0.56	0
6	EDO	B	425	-	3,3,3	0.49	0	2,2,2	0.26	0

In the following table, the Chirals column lists the number of chiral outliers, the number of chiral centers analysed, the number of these observed in the model and the number defined in the Chemical Component Dictionary. Similar counts are reported in the Torsion and Rings columns. '-' means no outliers of that kind were identified.

Mol	Type	Chain	Res	Link	Chirals	Torsions	Rings
9	SER	B	426	-	-	0/6/6/6	-
6	EDO	B	420	-	-	1/1/1/1	-
5	F9F	A	308	-	-	7/20/20/20	0/1/1/1
6	EDO	B	422	-	-	1/1/1/1	-
6	EDO	B	424	-	-	1/1/1/1	-
10	PEG	B	427	-	-	3/4/4/4	-
6	EDO	A	309	-	-	1/1/1/1	-
10	PEG	B	428	-	-	2/4/4/4	-
6	EDO	B	421	-	-	0/1/1/1	-
6	EDO	B	423	-	-	0/1/1/1	-
6	EDO	B	419	-	-	1/1/1/1	-
6	EDO	B	425	-	-	1/1/1/1	-
7	OJO	B	401	-	-	0/10/15/15	0/1/1/1

All (5) bond length outliers are listed below:

Mol	Chain	Res	Type	Atoms	Z	Observed(Å)	Ideal(Å)
5	A	308	F9F	C4-S12	-7.33	1.65	1.76
5	A	308	F9F	O22-S12	2.85	1.46	1.43
7	B	401	OJO	OXT-C	-2.57	1.23	1.30
7	B	401	OJO	O-C	2.28	1.28	1.22
5	A	308	F9F	C5-C4	2.02	1.42	1.38

All (6) bond angle outliers are listed below:

Mol	Chain	Res	Type	Atoms	Z	Observed(°)	Ideal(°)
5	A	308	F9F	C15-C14-N13	4.20	120.07	110.85
5	A	308	F9F	O22-S12-O21	-3.66	115.05	119.55
9	B	426	SER	OXT-C-O	-3.61	115.88	124.09
9	B	426	SER	OXT-C-CA	3.05	123.78	113.38
5	A	308	F9F	C14-N13-S12	-2.66	111.81	120.41
5	A	308	F9F	C2-C3-C4	2.51	122.05	119.45

There are no chirality outliers.

All (18) torsion outliers are listed below:

Mol	Chain	Res	Type	Atoms
6	B	422	EDO	O1-C1-C2-O2
10	B	428	PEG	C1-C2-O2-C3
10	B	427	PEG	O1-C1-C2-O2
5	A	308	F9F	C5-C4-S12-O21
6	B	419	EDO	O1-C1-C2-O2
6	B	420	EDO	O1-C1-C2-O2
6	B	425	EDO	O1-C1-C2-O2
5	A	308	F9F	C3-C4-S12-O21
5	A	308	F9F	C5-C4-S12-N13
6	A	309	EDO	O1-C1-C2-O2
10	B	427	PEG	O2-C3-C4-O4
6	B	424	EDO	O1-C1-C2-O2
5	A	308	F9F	N13-C14-C15-O16
5	A	308	F9F	C3-C4-S12-N13
5	A	308	F9F	C6-C1-O7-C8
10	B	427	PEG	C4-C3-O2-C2
5	A	308	F9F	C2-C1-O7-C8
10	B	428	PEG	O1-C1-C2-O2

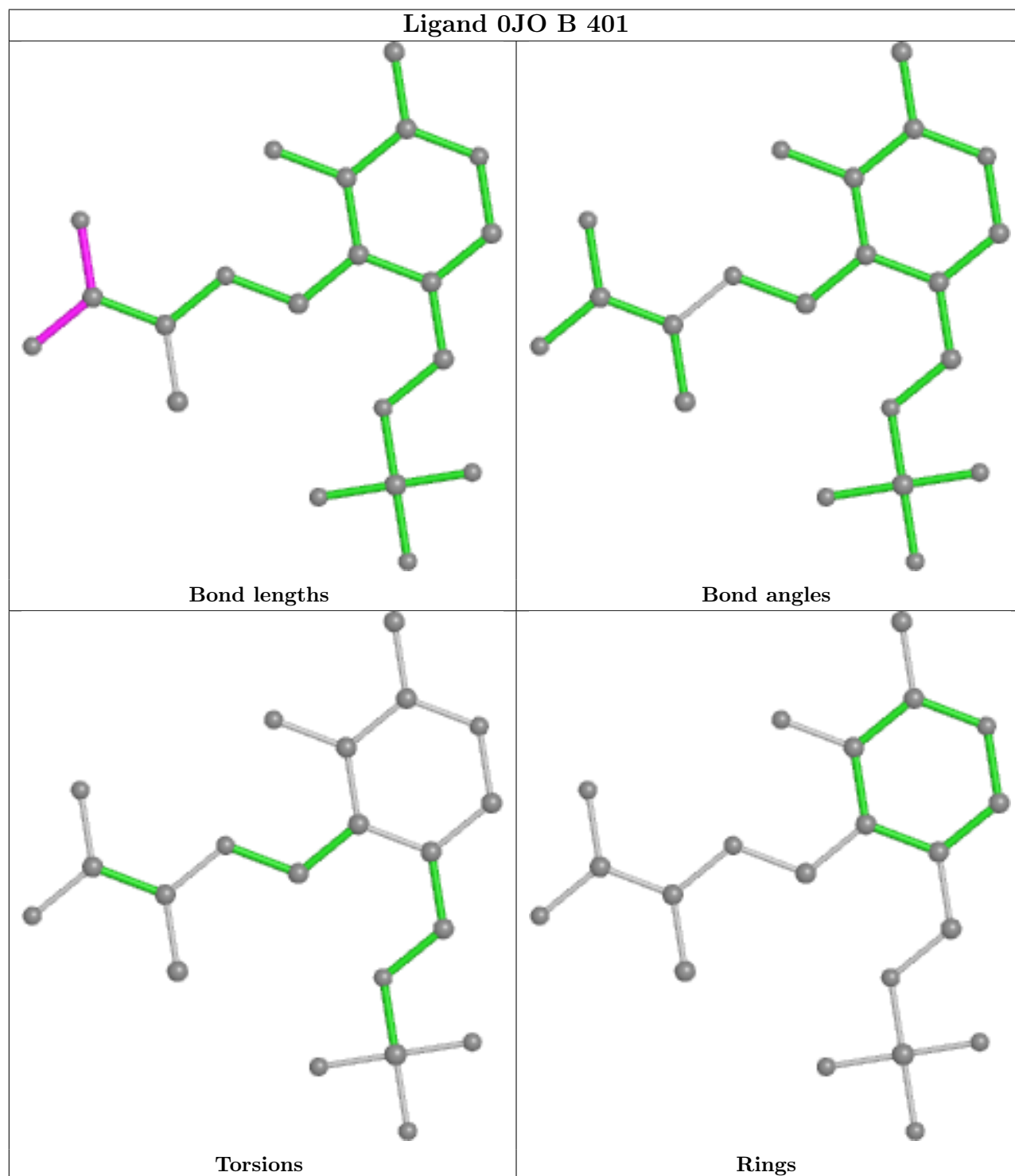
There are no ring outliers.

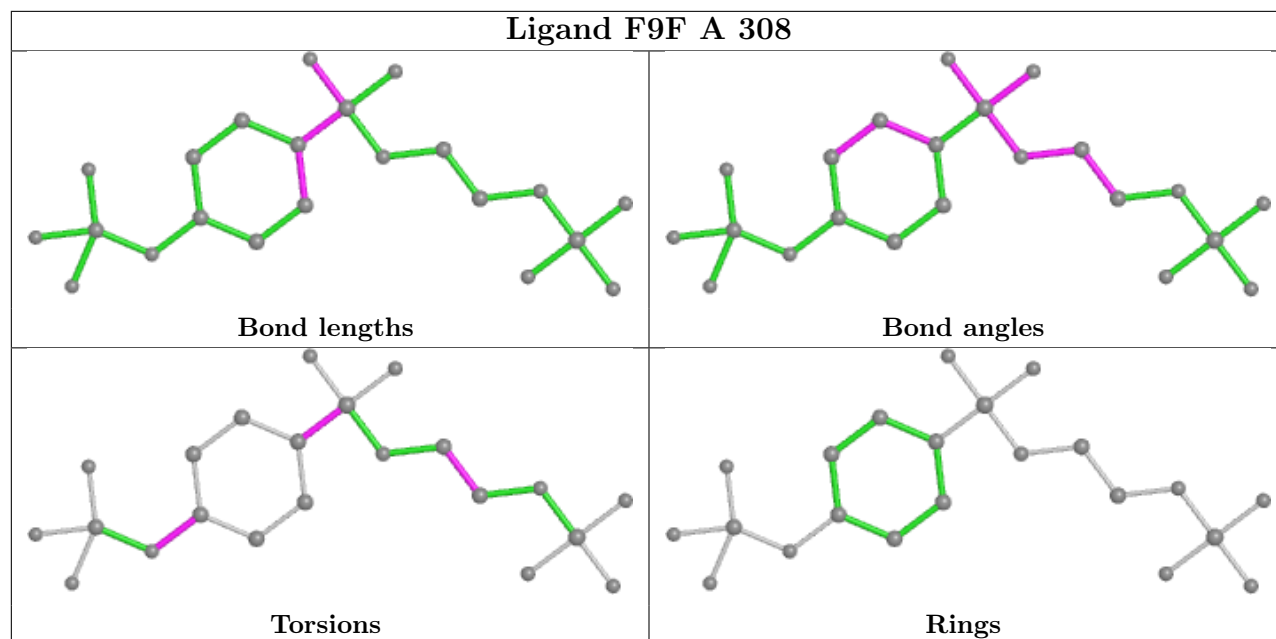
12 monomers are involved in 30 short contacts:

Mol	Chain	Res	Type	Clashes	Symm-Clashes
9	B	426	SER	2	0
3	B	407	DMS	2	0
6	B	420	EDO	1	0
3	B	408	DMS	5	0
3	B	414	DMS	2	0
3	A	301	DMS	2	0
6	A	309	EDO	3	0
10	B	428	PEG	3	0
5	A	308	F9F	1	0
3	B	411	DMS	2	0
10	B	427	PEG	3	0
3	A	302	DMS	4	0

The following is a two-dimensional graphical depiction of Mogul quality analysis of bond lengths, bond angles, torsion angles, and ring geometry for all instances of the Ligand of Interest. In addition, ligands with molecular weight > 250 and outliers as shown on the validation Tables will also be included. For torsion angles, if less than 5% of the Mogul distribution of torsion angles is

within 10 degrees of the torsion angle in question, then that torsion angle is considered an outlier. Any bond that is central to one or more torsion angles identified as an outlier by Mogul will be highlighted in the graph. For rings, the root-mean-square deviation (RMSD) between the ring in question and similar rings identified by Mogul is calculated over all ring torsion angles. If the average RMSD is greater than 60 degrees and the minimal RMSD between the ring in question and any Mogul-identified rings is also greater than 60 degrees, then that ring is considered an outlier. The outliers are highlighted in purple. The color gray indicates Mogul did not find sufficient equivalents in the CSD to analyse the geometry.





5.7 Other polymers [i](#)

There are no such residues in this entry.

5.8 Polymer linkage issues [i](#)

There are no chain breaks in this entry.

6 Fit of model and data [i](#)

6.1 Protein, DNA and RNA chains [i](#)

In the following table, the column labelled ‘#RSRZ > 2’ contains the number (and percentage) of RSRZ outliers, followed by percent RSRZ outliers for the chain as percentile scores relative to all X-ray entries and entries of similar resolution. The OWAB column contains the minimum, median, 95th percentile and maximum values of the occupancy-weighted average B-factor per residue. The column labelled ‘Q < 0.9’ lists the number of (and percentage) of residues with an average occupancy less than 0.9.

Mol	Chain	Analysed	<RSRZ>	#RSRZ>2	OWAB(Å ²)	Q<0.9
1	A	268/268 (100%)	-0.07	9 (3%) 45 43	13, 23, 44, 71	0
2	B	394/395 (99%)	-0.23	6 (1%) 73 74	11, 14, 24, 60	1 (0%)
All	All	662/663 (99%)	-0.17	15 (2%) 60 60	11, 17, 36, 71	1 (0%)

All (15) RSRZ outliers are listed below:

Mol	Chain	Res	Type	RSRZ
1	A	190	ALA	5.5
1	A	191	LEU	5.2
2	B	393	ALA	3.4
2	B	379[A]	ARG	3.2
1	A	15	ARG	3.1
1	A	189	GLY	3.0
2	B	395	GLU	3.0
1	A	195	HIS	2.7
2	B	80	LEU	2.5
2	B	392	LYS	2.3
1	A	192	PRO	2.2
1	A	247[A]	SER	2.2
2	B	2	THR	2.1
1	A	246	ALA	2.1
1	A	204	HIS	2.1

6.2 Non-standard residues in protein, DNA, RNA chains [i](#)

There are no non-standard protein/DNA/RNA residues in this entry.

6.3 Carbohydrates [i](#)

There are no monosaccharides in this entry.

6.4 Ligands i

In the following table, the Atoms column lists the number of modelled atoms in the group and the number defined in the chemical component dictionary. The B-factors column lists the minimum, median, 95th percentile and maximum values of B factors of atoms in the group. The column labelled 'Q< 0.9' lists the number of atoms with occupancy less than 0.9.

Mol	Type	Chain	Res	Atoms	RSCC	RSR	B-factors(Å ²)	Q<0.9
6	EDO	B	420	4/4	0.80	0.19	26,31,33,41	0
3	DMS	A	301	4/4	0.81	0.17	38,40,56,58	4
6	EDO	B	422	4/4	0.85	0.11	33,37,39,47	0
6	EDO	B	424	4/4	0.86	0.12	22,23,27,32	0
6	EDO	B	419	4/4	0.88	0.12	29,31,35,46	0
3	DMS	B	412	4/4	0.88	0.20	25,32,34,42	4
3	DMS	B	411	4/4	0.89	0.17	52,54,64,70	0
10	PEG	B	428	7/7	0.90	0.23	25,31,35,41	0
6	EDO	B	423	4/4	0.91	0.16	12,23,27,32	4
3	DMS	B	413	4/4	0.92	0.23	60,61,64,74	0
3	DMS	A	303	4/4	0.93	0.17	36,48,51,53	0
4	CL	B	418	1/1	0.93	0.06	52,52,52,52	1
3	DMS	B	414	4/4	0.94	0.22	43,50,58,58	0
6	EDO	B	421	4/4	0.94	0.10	15,21,23,31	0
6	EDO	B	425	4/4	0.95	0.07	31,32,32,41	0
10	PEG	B	427	7/7	0.95	0.13	20,21,25,29	7
3	DMS	A	302	4/4	0.95	0.12	23,29,29,31	4
6	EDO	A	309	4/4	0.96	0.15	30,31,31,41	0
3	DMS	A	305	4/4	0.96	0.19	23,26,27,30	0
3	DMS	B	408	4/4	0.96	0.17	41,41,45,55	0
9	SER	B	426	7/7	0.96	0.07	22,24,31,36	0
3	DMS	B	410	4/4	0.96	0.17	30,34,48,48	0
3	DMS	A	304	4/4	0.96	0.12	34,42,45,47	0
3	DMS	B	415	4/4	0.97	0.26	52,68,69,78	0
4	CL	B	416	1/1	0.97	0.04	57,57,57,57	0
4	CL	B	417	1/1	0.97	0.08	52,52,52,52	0
3	DMS	B	406	4/4	0.97	0.09	13,15,18,20	4
3	DMS	B	407	4/4	0.97	0.26	43,44,51,55	0
7	OJO	B	401	21/21	0.98	0.13	13,14,15,16	0
5	F9F	A	308	22/22	0.98	0.07	16,17,26,26	0
4	CL	A	307	1/1	0.98	0.06	43,43,43,43	0
3	DMS	B	409	4/4	0.98	0.09	18,19,20,23	4
8	CS	B	402[B]	1/1	0.99	0.07	12,12,12,12	1
3	DMS	B	405	4/4	0.99	0.07	22,22,23,23	0
4	CL	A	306	1/1	0.99	0.06	60,60,60,60	0
8	CS	B	402[A]	1/1	0.99	0.07	16,16,16,16	1
8	CS	B	404	1/1	1.00	0.04	19,19,19,19	1

Continued on next page...

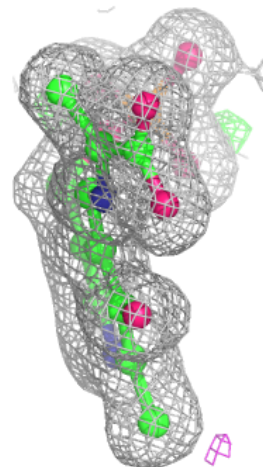
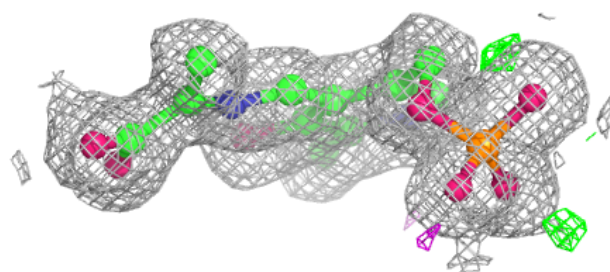
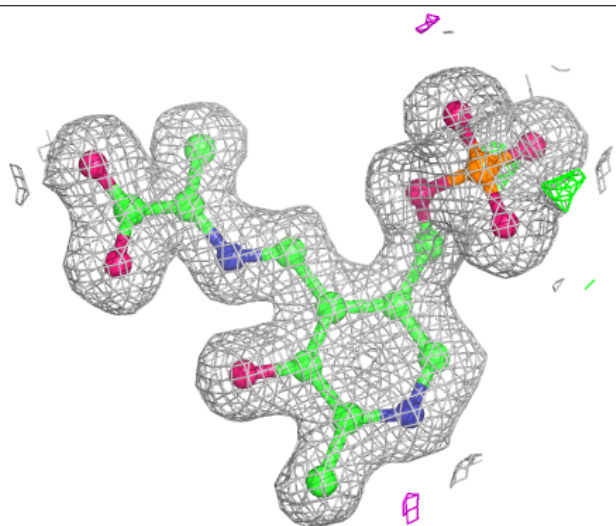
Continued from previous page...

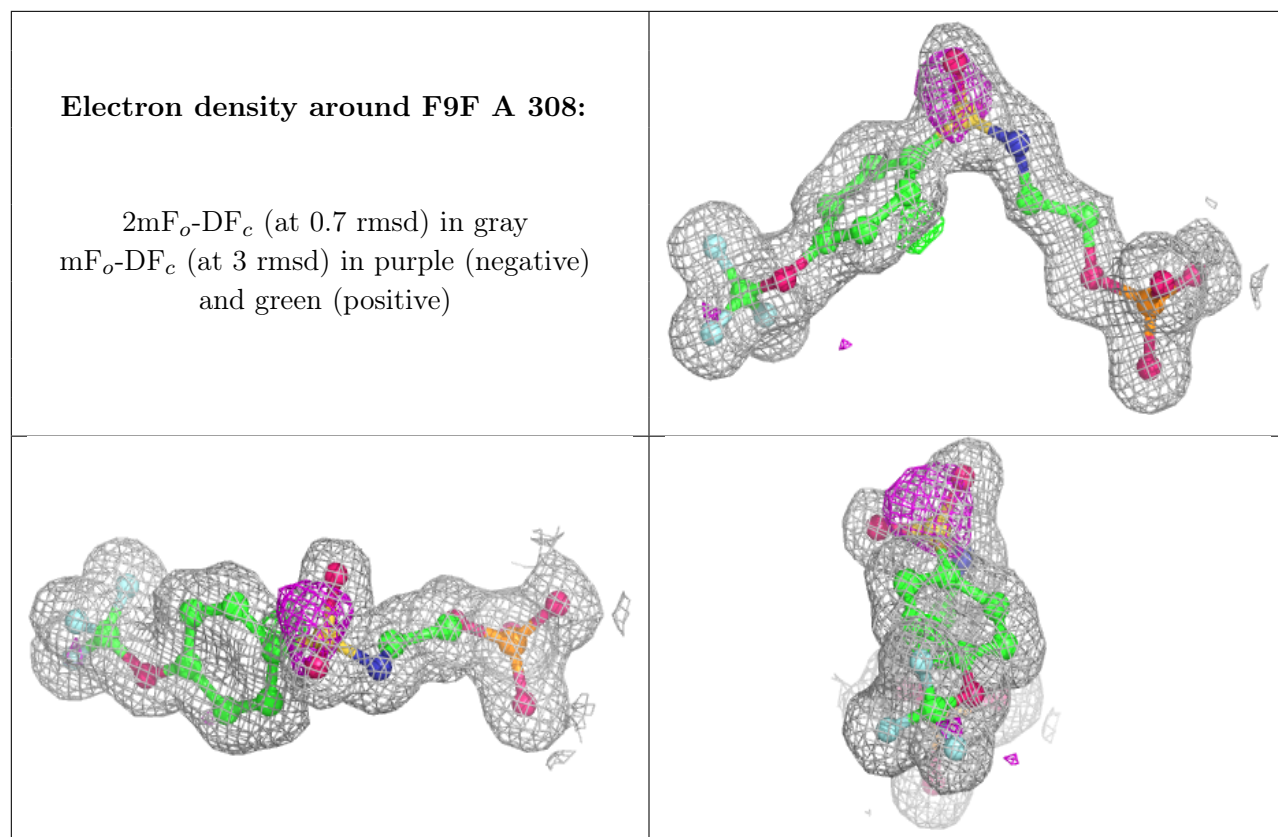
Mol	Type	Chain	Res	Atoms	RSCC	RSR	B-factors(Å ²)	Q<0.9
8	CS	B	403	1/1	1.00	0.05	16,16,16,16	1

The following is a graphical depiction of the model fit to experimental electron density of all instances of the Ligand of Interest. In addition, ligands with molecular weight > 250 and outliers as shown on the geometry validation Tables will also be included. Each fit is shown from different orientation to approximate a three-dimensional view.

Electron density around 0JO B 401:

$2mF_o-DF_c$ (at 0.7 rmsd) in gray
 mF_o-DF_c (at 3 rmsd) in purple (negative)
and green (positive)





6.5 Other polymers [i](#)

There are no such residues in this entry.