



# Full wwPDB X-ray Structure Validation Report ⓘ

Mar 3, 2024 – 08:41 AM EST

PDB ID : 6C7E  
Title : Crystal structure of human phosphodiesterase 2A with 1-(2-chlorophenyl)-N,4-dimethyl-[1,2,4]triazolo[4,3-a]quinoxaline-8-carboxamide  
Authors : Xu, R.; Aertgeerts, K.  
Deposited on : 2018-01-22  
Resolution : 1.43 Å(reported)

This is a Full wwPDB X-ray Structure Validation Report for a publicly released PDB entry.

We welcome your comments at [validation@mail.wwpdb.org](mailto:validation@mail.wwpdb.org)

A user guide is available at

<https://www.wwpdb.org/validation/2017/XrayValidationReportHelp>

with specific help available everywhere you see the ⓘ symbol.

The types of validation reports are described at

<http://www.wwpdb.org/validation/2017/FAQs#types>.

---

The following versions of software and data (see [references ⓘ](#)) were used in the production of this report:

MolProbity : 4.02b-467  
Mogul : 1.8.5 (274361), CSD as541be (2020)  
Xtriage (Phenix) : 1.13  
EDS : 2.36  
buster-report : 1.1.7 (2018)  
Percentile statistics : 20191225.v01 (using entries in the PDB archive December 25th 2019)  
Refmac : 5.8.0158  
CCP4 : 7.0.044 (Gargrove)  
Ideal geometry (proteins) : Engh & Huber (2001)  
Ideal geometry (DNA, RNA) : Parkinson et al. (1996)  
Validation Pipeline (wwPDB-VP) : 2.36

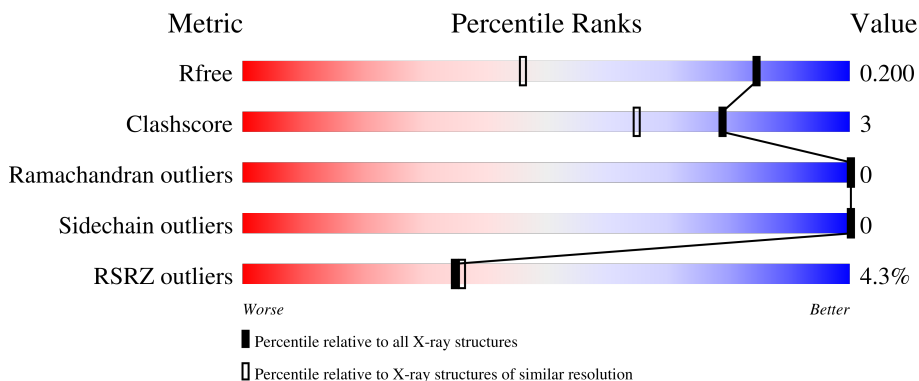
# 1 Overall quality at a glance

The following experimental techniques were used to determine the structure:

*X-RAY DIFFRACTION*

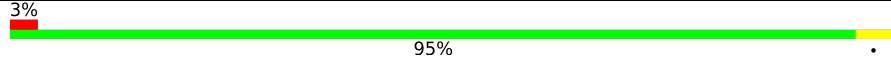
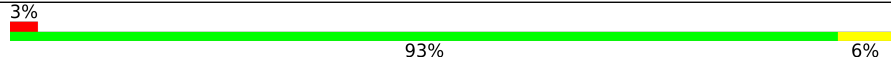
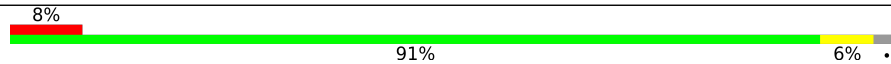
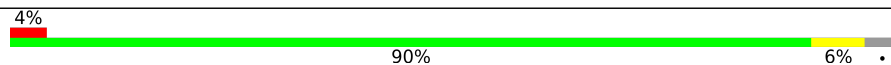
The reported resolution of this entry is 1.43 Å.

Percentile scores (ranging between 0-100) for global validation metrics of the entry are shown in the following graphic. The table shows the number of entries on which the scores are based.



Metric	Whole archive (#Entries)	Similar resolution (#Entries, resolution range(Å))
$R_{free}$	130704	2021 (1.46-1.42)
Clashscore	141614	2086 (1.46-1.42)
Ramachandran outliers	138981	2047 (1.46-1.42)
Sidechain outliers	138945	2047 (1.46-1.42)
RSRZ outliers	127900	1993 (1.46-1.42)

The table below summarises the geometric issues observed across the polymeric chains and their fit to the electron density. The red, orange, yellow and green segments of the lower bar indicate the fraction of residues that contain outliers for  $\geq 3$ , 2, 1 and 0 types of geometric quality criteria respectively. A grey segment represents the fraction of residues that are not modelled. The numeric value for each fraction is indicated below the corresponding segment, with a dot representing fractions  $\leq 5\%$ . The upper red bar (where present) indicates the fraction of residues that have poor fit to the electron density. The numeric value is given above the bar.

Mol	Chain	Length	Quality of chain
1	A	342	 3% 95% 6%
1	B	342	 3% 93% 6%
1	C	342	 8% 91% 6%
1	D	342	 4% 90% 6%

## 2 Entry composition i

There are 5 unique types of molecules in this entry. The entry contains 12249 atoms, of which 0 are hydrogens and 0 are deuteriums.

In the tables below, the ZeroOcc column contains the number of atoms modelled with zero occupancy, the AltConf column contains the number of residues with at least one atom in alternate conformation and the Trace column contains the number of residues modelled with at most 2 atoms.

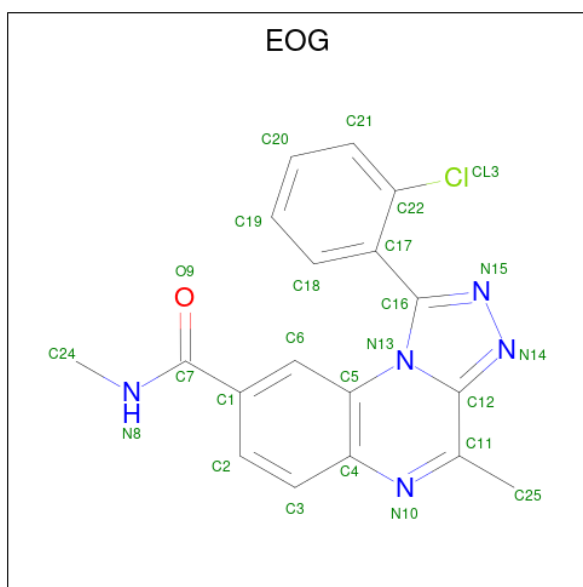
- Molecule 1 is a protein called cGMP-dependent 3',5'-cyclic phosphodiesterase.

Mol	Chain	Residues	Atoms					ZeroOcc	AltConf	Trace
			Total	C	N	O	S			
1	A	342	2794	1778	478	512	26	0	0	0
1	B	339	2775	1768	475	506	26	0	0	0
1	C	331	2712	1732	465	490	25	0	0	0
1	D	327	2676	1707	460	484	25	0	0	0

There are 12 discrepancies between the modelled and reference sequences:

Chain	Residue	Modelled	Actual	Comment	Reference
A	576	SER	-	expression tag	UNP O00408
A	577	ALA	-	expression tag	UNP O00408
A	578	MET	-	expression tag	UNP O00408
B	576	SER	-	expression tag	UNP O00408
B	577	ALA	-	expression tag	UNP O00408
B	578	MET	-	expression tag	UNP O00408
C	576	SER	-	expression tag	UNP O00408
C	577	ALA	-	expression tag	UNP O00408
C	578	MET	-	expression tag	UNP O00408
D	576	SER	-	expression tag	UNP O00408
D	577	ALA	-	expression tag	UNP O00408
D	578	MET	-	expression tag	UNP O00408

- Molecule 2 is 1-(2-chlorophenyl)-N,4-dimethyl[1,2,4]triazolo[4,3-a]quinoxaline-8-carboxamide (three-letter code: EOG) (formula: C<sub>18</sub>H<sub>14</sub>ClN<sub>5</sub>O).



Mol	Chain	Residues	Atoms				ZeroOcc	AltConf	
2	A	1	Total	C	Cl	N	O	0	0
			25	18	1	5	1		
2	B	1	Total	C	Cl	N	O	0	0
			25	18	1	5	1		
2	C	1	Total	C	Cl	N	O	0	0
			25	18	1	5	1		
2	D	1	Total	C	Cl	N	O	0	0
			25	18	1	5	1		

- Molecule 3 is ZINC ION (three-letter code: ZN) (formula: Zn).

Mol	Chain	Residues	Atoms		ZeroOcc	AltConf
3	A	1	Total	Zn	0	0
			1	1		
3	B	1	Total	Zn	0	0
			1	1		
3	C	1	Total	Zn	0	0
			1	1		
3	D	1	Total	Zn	0	0
			1	1		

- Molecule 4 is MAGNESIUM ION (three-letter code: MG) (formula: Mg).

Mol	Chain	Residues	Atoms		ZeroOcc	AltConf
4	A	1	Total	Mg	0	0
			1	1		

*Continued on next page...*

*Continued from previous page...*

Mol	Chain	Residues	Atoms		ZeroOcc	AltConf
4	B	1	Total 1	Mg 1	0	0
4	C	1	Total 1	Mg 1	0	0
4	D	1	Total 1	Mg 1	0	0

- Molecule 5 is water.

Mol	Chain	Residues	Atoms		ZeroOcc	AltConf
5	A	331	Total 331	O 331	0	0
5	B	312	Total 312	O 312	0	0
5	C	262	Total 262	O 262	0	0
5	D	279	Total 279	O 279	0	0

### 3 Residue-property plots [i](#)

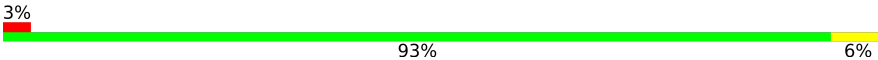
These plots are drawn for all protein, RNA, DNA and oligosaccharide chains in the entry. The first graphic for a chain summarises the proportions of the various outlier classes displayed in the second graphic. The second graphic shows the sequence view annotated by issues in geometry and electron density. Residues are color-coded according to the number of geometric quality criteria for which they contain at least one outlier: green = 0, yellow = 1, orange = 2 and red = 3 or more. A red dot above a residue indicates a poor fit to the electron density ( $RSRZ > 2$ ). Stretches of 2 or more consecutive residues without any outlier are shown as a green connector. Residues present in the sample, but not in the model, are shown in grey.

- Molecule 1: cGMP-dependent 3',5'-cyclic phosphodiesterase

Chain A: 

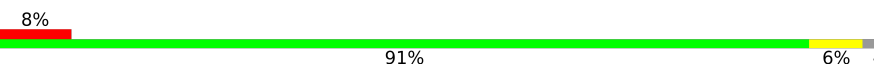


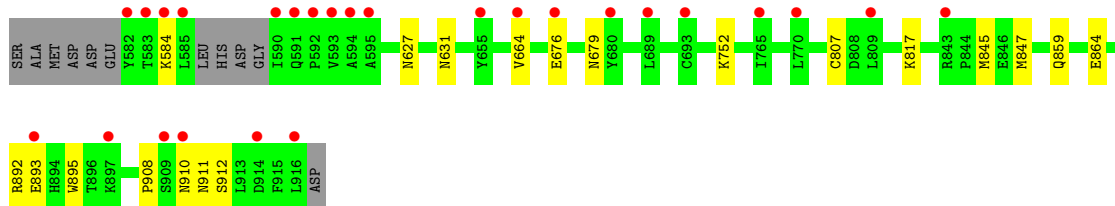
- Molecule 1: cGMP-dependent 3',5'-cyclic phosphodiesterase

Chain B: 

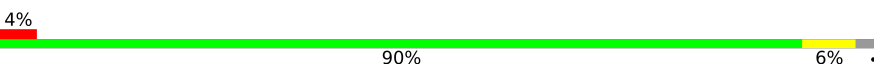


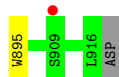
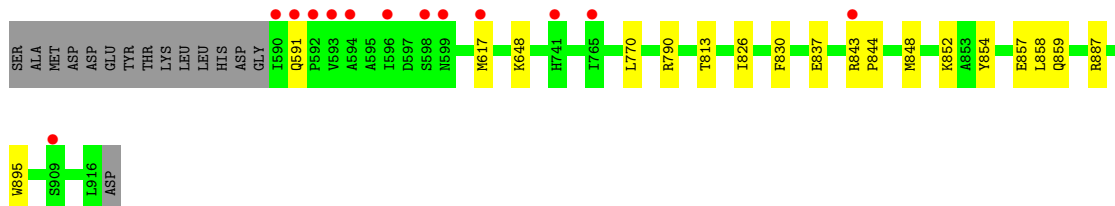
- Molecule 1: cGMP-dependent 3',5'-cyclic phosphodiesterase

Chain C: 



- Molecule 1: cGMP-dependent 3',5'-cyclic phosphodiesterase

Chain D: 



## 4 Data and refinement statistics

Property	Value	Source
Space group	P 1	Depositor
Cell constants a, b, c, $\alpha$ , $\beta$ , $\gamma$	55.96Å 72.65Å 90.73Å 109.11° 91.28° 91.20°	Depositor
Resolution (Å)	34.31 – 1.43 34.31 – 1.43	Depositor EDS
% Data completeness (in resolution range)	89.1 (34.31-1.43) 89.1 (34.31-1.43)	Depositor EDS
$R_{merge}$	0.04	Depositor
$R_{sym}$	(Not available)	Depositor
$\langle I/\sigma(I) \rangle$ <sup>1</sup>	1.60 (at 1.43Å)	Xtrriage
Refinement program	PHENIX	Depositor
R, $R_{free}$	0.174 , 0.201 0.175 , 0.200	Depositor DCC
$R_{free}$ test set	11114 reflections (5.00%)	wwPDB-VP
Wilson B-factor (Å <sup>2</sup> )	16.2	Xtrriage
Anisotropy	0.271	Xtrriage
Bulk solvent $k_{sol}$ (e/Å <sup>3</sup> ), $B_{sol}$ (Å <sup>2</sup> )	0.40 , 50.3	EDS
L-test for twinning <sup>2</sup>	$\langle  L  \rangle = 0.48$ , $\langle L^2 \rangle = 0.31$	Xtrriage
Estimated twinning fraction	0.028 for h,-k,-l	Xtrriage
$F_o, F_c$ correlation	0.97	EDS
Total number of atoms	12249	wwPDB-VP
Average B, all atoms (Å <sup>2</sup> )	25.0	wwPDB-VP

Xtrriage's analysis on translational NCS is as follows: *The largest off-origin peak in the Patterson function is 8.88% of the height of the origin peak. No significant pseudotranslation is detected.*

<sup>1</sup>Intensities estimated from amplitudes.

<sup>2</sup>Theoretical values of  $\langle |L| \rangle$ ,  $\langle L^2 \rangle$  for acentric reflections are 0.5, 0.333 respectively for untwinned datasets, and 0.375, 0.2 for perfectly twinned datasets.

## 5 Model quality [i](#)

### 5.1 Standard geometry [i](#)

Bond lengths and bond angles in the following residue types are not validated in this section: EOG, ZN, MG

The Z score for a bond length (or angle) is the number of standard deviations the observed value is removed from the expected value. A bond length (or angle) with  $|Z| > 5$  is considered an outlier worth inspection. RMSZ is the root-mean-square of all Z scores of the bond lengths (or angles).

Mol	Chain	Bond lengths		Bond angles	
		RMSZ	# Z  >5	RMSZ	# Z  >5
1	A	0.45	2/2861 (0.1%)	0.51	0/3860
1	B	0.36	0/2842	0.52	1/3834 (0.0%)
1	C	0.35	0/2777	0.48	0/3745
1	D	0.35	0/2741	0.48	0/3698
All	All	0.38	2/11221 (0.0%)	0.50	1/15137 (0.0%)

All (2) bond length outliers are listed below:

Mol	Chain	Res	Type	Atoms	Z	Observed(Å)	Ideal(Å)
1	A	864	GLU	CD-OE2	-5.38	1.19	1.25
1	A	864	GLU	CD-OE1	-5.33	1.19	1.25

All (1) bond angle outliers are listed below:

Mol	Chain	Res	Type	Atoms	Z	Observed(°)	Ideal(°)
1	B	843	ARG	NE-CZ-NH1	-5.95	117.33	120.30

There are no chirality outliers.

There are no planarity outliers.

### 5.2 Too-close contacts [i](#)

In the following table, the Non-H and H(model) columns list the number of non-hydrogen atoms and hydrogen atoms in the chain respectively. The H(added) column lists the number of hydrogen atoms added and optimized by MolProbity. The Clashes column lists the number of clashes within the asymmetric unit, whereas Symm-Clashes lists symmetry-related clashes.

Mol	Chain	Non-H	H(model)	H(added)	Clashes	Symm-Clashes
1	A	2794	0	2732	12	1

*Continued on next page...*



Continued from previous page...

Mol	Chain	Non-H	H(model)	H(added)	Clashes	Symm-Clashes
1	B	2775	0	2718	18	0
1	C	2712	0	2669	16	1
1	D	2676	0	2630	15	0
2	A	25	0	0	1	0
2	B	25	0	0	0	0
2	C	25	0	0	0	0
2	D	25	0	0	1	0
3	A	1	0	0	0	0
3	B	1	0	0	0	0
3	C	1	0	0	0	0
3	D	1	0	0	0	0
4	A	1	0	0	0	0
4	B	1	0	0	0	0
4	C	1	0	0	0	0
4	D	1	0	0	0	0
5	A	331	0	0	2	0
5	B	312	0	0	6	0
5	C	262	0	0	3	0
5	D	279	0	0	2	0
All	All	12249	0	10749	61	1

The all-atom clashscore is defined as the number of clashes found per 1000 atoms (including hydrogen atoms). The all-atom clashscore for this structure is 3.

All (61) close contacts within the same asymmetric unit are listed below, sorted by their clash magnitude.

Atom-1	Atom-2	Interatomic distance (Å)	Clash overlap (Å)
1:C:910:ASN:HD21	1:C:912:SER:HB3	1.17	1.08
1:C:910:ASN:ND2	1:C:912:SER:HB3	1.75	1.00
1:A:864:GLU:OE2	1:A:892:ARG:NH2	2.13	0.81
1:A:864:GLU:OE2	1:A:892:ARG:CZ	2.30	0.80
1:D:591:GLN:OE1	1:D:617:MET:HE2	1.82	0.79
1:C:910:ASN:ND2	1:C:912:SER:CB	2.51	0.70
1:C:864:GLU:HG3	1:C:892:ARG:HD2	1.74	0.69
1:D:591:GLN:OE1	1:D:617:MET:CE	2.44	0.65
1:B:581:GLU:OE2	1:B:647:LYS:NZ	2.31	0.62
1:B:719:TYR:O	1:B:722:GLU:HG3	2.00	0.61
1:C:908:PRO:HB2	1:C:910:ASN:OD1	2.02	0.59
1:B:864:GLU:OE2	1:B:892:ARG:NH2	2.36	0.58
1:C:910:ASN:O	1:C:911:ASN:HB2	2.04	0.57
1:B:719:TYR:O	1:B:722:GLU:CG	2.53	0.57

Continued on next page...

*Continued from previous page...*

Atom-1	Atom-2	Interatomic distance (Å)	Clash overlap (Å)
1:C:627:ASN:O	1:C:631:ASN:ND2	2.41	0.54
1:B:860:ILE:O	1:B:864:GLU:HG3	2.08	0.53
1:B:617:MET:HG3	5:B:1189:HOH:O	2.08	0.52
1:D:859:GLN:HG2	1:D:895:TRP:CE2	2.44	0.52
1:A:794:GLN:OE1	1:A:797:ARG:NH2	2.41	0.51
1:C:859:GLN:HG2	1:C:895:TRP:CE2	2.47	0.50
1:B:645:MET:HG2	5:B:1330:HOH:O	2.12	0.49
1:A:793:LYS:HE3	5:A:1151:HOH:O	2.13	0.49
1:A:854:TYR:CE2	1:A:856:PRO:HG2	2.47	0.49
1:B:859:GLN:HG2	1:B:895:TRP:CE2	2.48	0.48
1:D:843:ARG:HH21	1:D:852:LYS:CE	2.26	0.48
1:B:579:ASP:OD1	5:B:1101:HOH:O	2.19	0.48
1:A:752:LYS:HE3	1:A:752:LYS:HB2	1.74	0.46
1:D:857:GLU:HG3	1:D:858:LEU:N	2.30	0.46
1:D:648:LYS:NZ	5:D:1105:HOH:O	2.47	0.46
1:C:817:LYS:HG2	5:C:1101:HOH:O	2.17	0.45
1:B:864:GLU:CD	1:B:892:ARG:NH2	2.69	0.45
1:D:813:THR:O	1:D:887:ARG:HG2	2.16	0.45
1:A:826:ILE:HD13	2:A:1001:EOG:C11	2.48	0.44
1:B:748:HIS:HB3	5:B:1130:HOH:O	2.17	0.44
1:D:837:GLU:OE1	1:D:844:PRO:HB3	2.18	0.44
1:A:617:MET:HG3	5:A:1282:HOH:O	2.17	0.43
1:A:793:LYS:HE3	1:A:793:LYS:HB3	1.70	0.43
1:B:692:SER:O	1:B:696:HIS:HB3	2.19	0.42
1:C:864:GLU:HG3	1:C:892:ARG:CD	2.48	0.42
1:D:854:TYR:HB3	1:D:857:GLU:HG2	2.02	0.42
1:C:892:ARG:NH2	1:C:893:GLU:OE2	2.51	0.42
1:D:770:LEU:HD23	1:D:770:LEU:HA	1.92	0.42
1:C:817:LYS:NZ	5:C:1114:HOH:O	2.52	0.42
1:B:719:TYR:O	1:B:722:GLU:HG2	2.20	0.41
1:B:722:GLU:HB3	1:B:723:GLY:H	1.55	0.41
1:A:585:LEU:HG	1:A:620:LEU:HD11	2.01	0.41
1:A:837:GLU:OE1	1:A:844:PRO:HB3	2.20	0.41
1:C:664:VAL:HG13	1:C:807:CYS:HB3	2.02	0.41
1:B:664:VAL:HG13	1:B:807:CYS:HB3	2.01	0.41
1:C:584:LYS:HG3	5:C:1311:HOH:O	2.20	0.41
1:C:676:GLU:HG3	1:C:679:ASN:ND2	2.35	0.41
1:D:843:ARG:HE	1:D:852:LYS:NZ	2.18	0.41
1:D:790:ARG:HG3	5:D:1267:HOH:O	2.20	0.41
1:D:843:ARG:HE	1:D:852:LYS:HZ2	1.68	0.41
1:A:790:ARG:HG2	1:A:790:ARG:HH11	1.86	0.41

*Continued on next page...*

Continued from previous page...

Atom-1	Atom-2	Interatomic distance (Å)	Clash overlap (Å)
1:B:591:GLN:HG3	5:B:1358:HOH:O	2.21	0.41
1:D:826:ILE:HD13	2:D:1001:EOG:C11	2.50	0.41
1:C:845:MET:HG3	1:C:847:MET:HG2	2.01	0.41
1:B:748:HIS:ND1	5:B:1102:HOH:O	2.30	0.41
1:B:820:ARG:NH1	1:B:824:GLU:OE2	2.54	0.41
1:D:830:PHE:HB3	1:D:848:MET:HG2	2.04	0.40

All (1) symmetry-related close contacts are listed below. The label for Atom-2 includes the symmetry operator and encoded unit-cell translations to be applied.

Atom-1	Atom-2	Interatomic distance (Å)	Clash overlap (Å)
1:A:579:ASP:OD2	1:C:752:LYS:NZ[1_455]	2.04	0.16

## 5.3 Torsion angles [i](#)

### 5.3.1 Protein backbone [i](#)

In the following table, the Percentiles column shows the percent Ramachandran outliers of the chain as a percentile score with respect to all X-ray entries followed by that with respect to entries of similar resolution.

The Analysed column shows the number of residues for which the backbone conformation was analysed, and the total number of residues.

Mol	Chain	Analysed	Favoured	Allowed	Outliers	Percentiles	
1	A	340/342 (99%)	338 (99%)	2 (1%)	0	100	100
1	B	337/342 (98%)	334 (99%)	3 (1%)	0	100	100
1	C	327/342 (96%)	324 (99%)	3 (1%)	0	100	100
1	D	325/342 (95%)	322 (99%)	3 (1%)	0	100	100
All	All	1329/1368 (97%)	1318 (99%)	11 (1%)	0	100	100

There are no Ramachandran outliers to report.

### 5.3.2 Protein sidechains [i](#)

In the following table, the Percentiles column shows the percent sidechain outliers of the chain as a percentile score with respect to all X-ray entries followed by that with respect to entries of similar resolution.

The Analysed column shows the number of residues for which the sidechain conformation was analysed, and the total number of residues.

Mol	Chain	Analysed	Rotameric	Outliers	Percentiles	
1	A	308/308 (100%)	308 (100%)	0	100	100
1	B	306/308 (99%)	306 (100%)	0	100	100
1	C	299/308 (97%)	299 (100%)	0	100	100
1	D	295/308 (96%)	295 (100%)	0	100	100
All	All	1208/1232 (98%)	1208 (100%)	0	100	100

There are no protein residues with a non-rotameric sidechain to report.

Sometimes sidechains can be flipped to improve hydrogen bonding and reduce clashes. There are no such sidechains identified.

### 5.3.3 RNA [i](#)

There are no RNA molecules in this entry.

## 5.4 Non-standard residues in protein, DNA, RNA chains [i](#)

There are no non-standard protein/DNA/RNA residues in this entry.

## 5.5 Carbohydrates [i](#)

There are no monosaccharides in this entry.

## 5.6 Ligand geometry [i](#)

Of 12 ligands modelled in this entry, 8 are monoatomic - leaving 4 for Mogul analysis.

In the following table, the Counts columns list the number of bonds (or angles) for which Mogul statistics could be retrieved, the number of bonds (or angles) that are observed in the model and the number of bonds (or angles) that are defined in the Chemical Component Dictionary. The Link column lists molecule types, if any, to which the group is linked. The Z score for a bond length (or angle) is the number of standard deviations the observed value is removed from the expected value. A bond length (or angle) with  $|Z| > 2$  is considered an outlier worth inspection. RMSZ is the root-mean-square of all Z scores of the bond lengths (or angles).

Mol	Type	Chain	Res	Link	Bond lengths			Bond angles		
					Counts	RMSZ	$\# Z  > 2$	Counts	RMSZ	$\# Z  > 2$
2	EOG	C	1001	-	23,28,28	1.29	2 (8%)	29,41,41	1.88	9 (31%)

Mol	Type	Chain	Res	Link	Bond lengths			Bond angles		
					Counts	RMSZ	# Z  > 2	Counts	RMSZ	# Z  > 2
2	EOG	A	1001	-	23,28,28	1.27	2 (8%)	29,41,41	1.79	10 (34%)
2	EOG	B	1001	-	23,28,28	1.27	2 (8%)	29,41,41	1.76	6 (20%)
2	EOG	D	1001	-	23,28,28	1.27	2 (8%)	29,41,41	1.79	9 (31%)

In the following table, the Chirals column lists the number of chiral outliers, the number of chiral centers analysed, the number of these observed in the model and the number defined in the Chemical Component Dictionary. Similar counts are reported in the Torsion and Rings columns. '-' means no outliers of that kind were identified.

Mol	Type	Chain	Res	Link	Chirals	Torsions	Rings
2	EOG	C	1001	-	-	2/10/19/19	0/4/4/4
2	EOG	A	1001	-	-	2/10/19/19	0/4/4/4
2	EOG	B	1001	-	-	2/10/19/19	0/4/4/4
2	EOG	D	1001	-	-	2/10/19/19	0/4/4/4

All (8) bond length outliers are listed below:

Mol	Chain	Res	Type	Atoms	Z	Observed(Å)	Ideal(Å)
2	A	1001	EOG	C7-N8	3.44	1.37	1.33
2	C	1001	EOG	C7-N8	3.23	1.37	1.33
2	B	1001	EOG	C7-N8	3.22	1.37	1.33
2	D	1001	EOG	C7-N8	3.00	1.37	1.33
2	B	1001	EOG	C11-N10	-2.85	1.29	1.32
2	A	1001	EOG	C11-N10	-2.59	1.29	1.32
2	C	1001	EOG	C11-N10	-2.58	1.29	1.32
2	D	1001	EOG	C11-N10	-2.45	1.29	1.32

All (34) bond angle outliers are listed below:

Mol	Chain	Res	Type	Atoms	Z	Observed(°)	Ideal(°)
2	A	1001	EOG	C25-C11-N10	4.35	122.02	116.00
2	B	1001	EOG	C1-C6-C5	-4.35	117.22	121.87
2	C	1001	EOG	C1-C6-C5	-4.15	117.44	121.87
2	C	1001	EOG	C25-C11-N10	3.88	121.37	116.00
2	B	1001	EOG	C25-C11-N10	3.77	121.22	116.00
2	D	1001	EOG	C1-C6-C5	-3.74	117.87	121.87
2	C	1001	EOG	C1-C7-N8	-3.65	112.05	116.89
2	D	1001	EOG	C25-C11-N10	3.62	121.01	116.00
2	A	1001	EOG	C1-C6-C5	-3.39	118.25	121.87
2	D	1001	EOG	C1-C7-N8	-3.31	112.50	116.89

*Continued on next page...*

Continued from previous page...

Mol	Chain	Res	Type	Atoms	Z	Observed(°)	Ideal(°)
2	C	1001	EOG	O9-C7-N8	3.21	127.34	122.47
2	B	1001	EOG	C1-C7-N8	-2.90	113.05	116.89
2	A	1001	EOG	C1-C7-N8	-2.89	113.07	116.89
2	C	1001	EOG	C17-C16-N13	2.84	130.66	126.97
2	D	1001	EOG	O9-C7-N8	2.83	126.76	122.47
2	B	1001	EOG	C2-C1-C6	2.71	122.46	119.23
2	A	1001	EOG	O9-C7-N8	2.67	126.52	122.47
2	B	1001	EOG	C24-N8-C7	-2.64	118.89	121.89
2	D	1001	EOG	C17-C16-N13	2.59	130.34	126.97
2	C	1001	EOG	C2-C1-C6	2.58	122.30	119.23
2	A	1001	EOG	C25-C11-C12	-2.56	117.46	121.74
2	A	1001	EOG	C17-C16-N13	2.48	130.20	126.97
2	D	1001	EOG	C24-N8-C7	-2.48	119.08	121.89
2	A	1001	EOG	C24-N8-C7	-2.45	119.11	121.89
2	A	1001	EOG	C17-C16-N15	-2.33	120.39	123.58
2	C	1001	EOG	C17-C16-N15	-2.30	120.43	123.58
2	C	1001	EOG	C25-C11-C12	-2.26	117.97	121.74
2	C	1001	EOG	C24-N8-C7	-2.21	119.38	121.89
2	B	1001	EOG	C22-C17-C16	-2.21	120.58	125.14
2	D	1001	EOG	C25-C11-C12	-2.18	118.09	121.74
2	D	1001	EOG	C22-C17-C16	-2.18	120.64	125.14
2	D	1001	EOG	C2-C1-C6	2.18	121.82	119.23
2	A	1001	EOG	C2-C1-C6	2.13	121.77	119.23
2	A	1001	EOG	C22-C17-C16	-2.03	120.95	125.14

There are no chirality outliers.

All (8) torsion outliers are listed below:

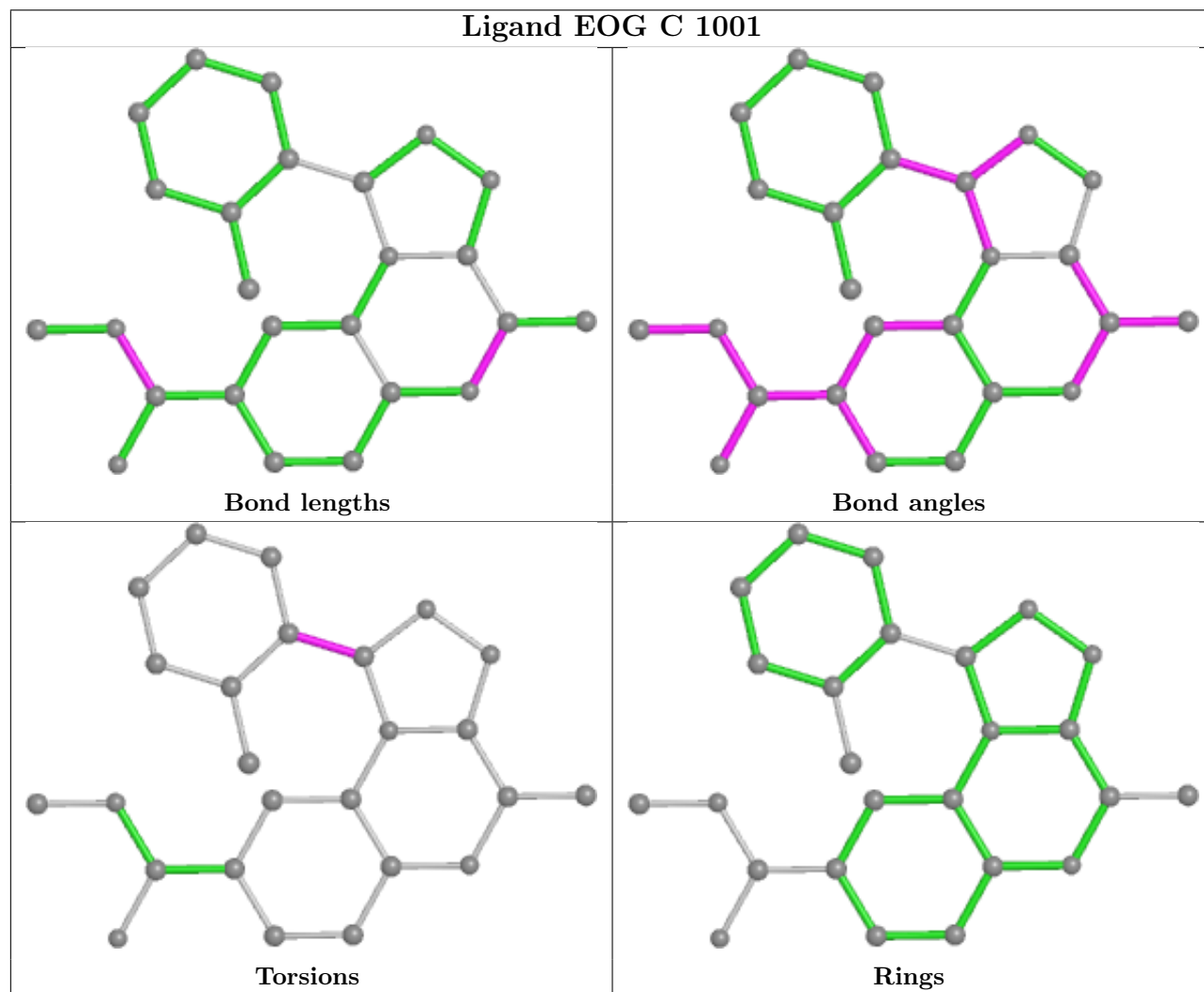
Mol	Chain	Res	Type	Atoms
2	A	1001	EOG	N15-C16-C17-C22
2	B	1001	EOG	N15-C16-C17-C22
2	C	1001	EOG	N15-C16-C17-C22
2	D	1001	EOG	N15-C16-C17-C22
2	A	1001	EOG	N15-C16-C17-C18
2	B	1001	EOG	N15-C16-C17-C18
2	C	1001	EOG	N15-C16-C17-C18
2	D	1001	EOG	N15-C16-C17-C18

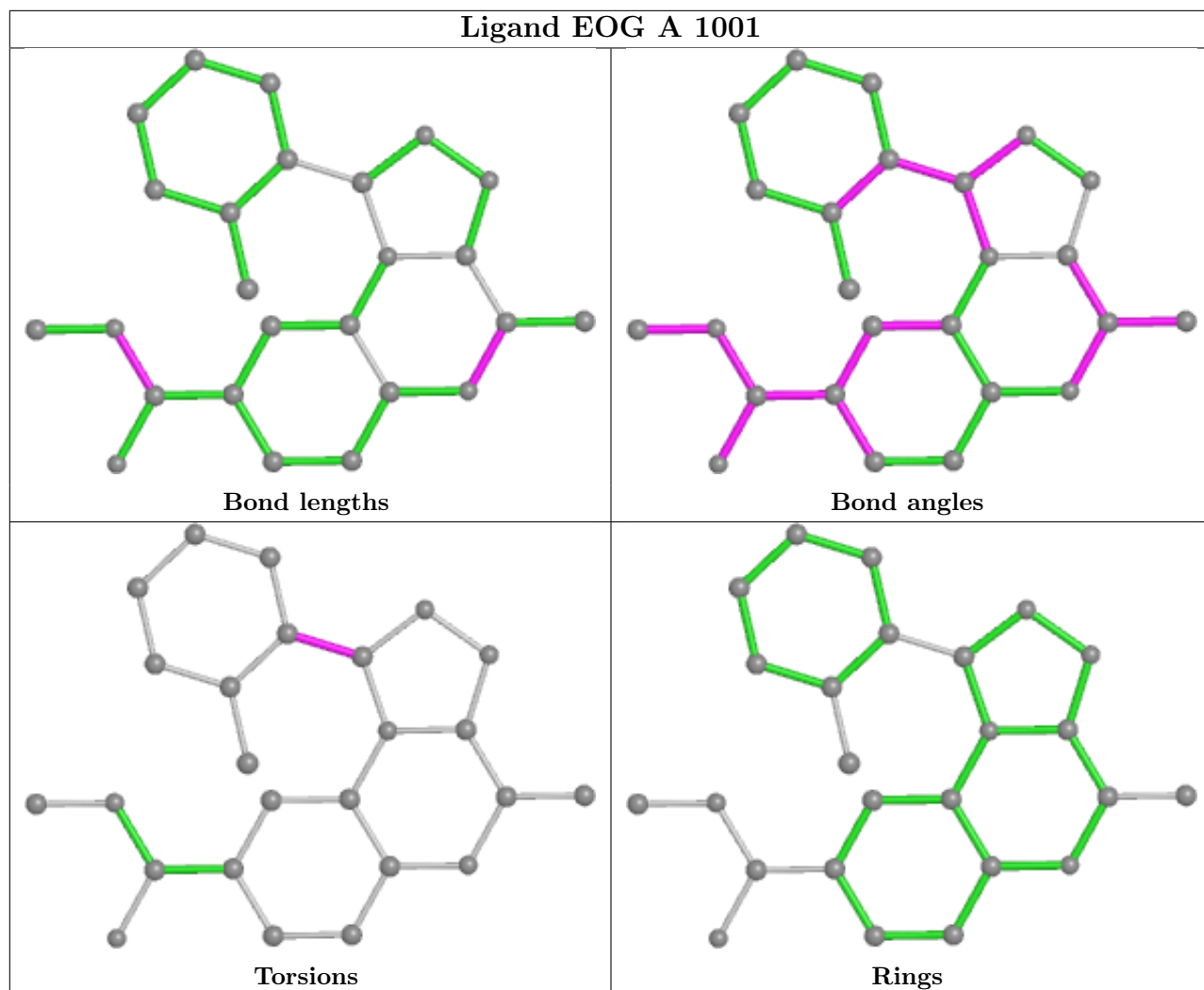
There are no ring outliers.

2 monomers are involved in 2 short contacts:

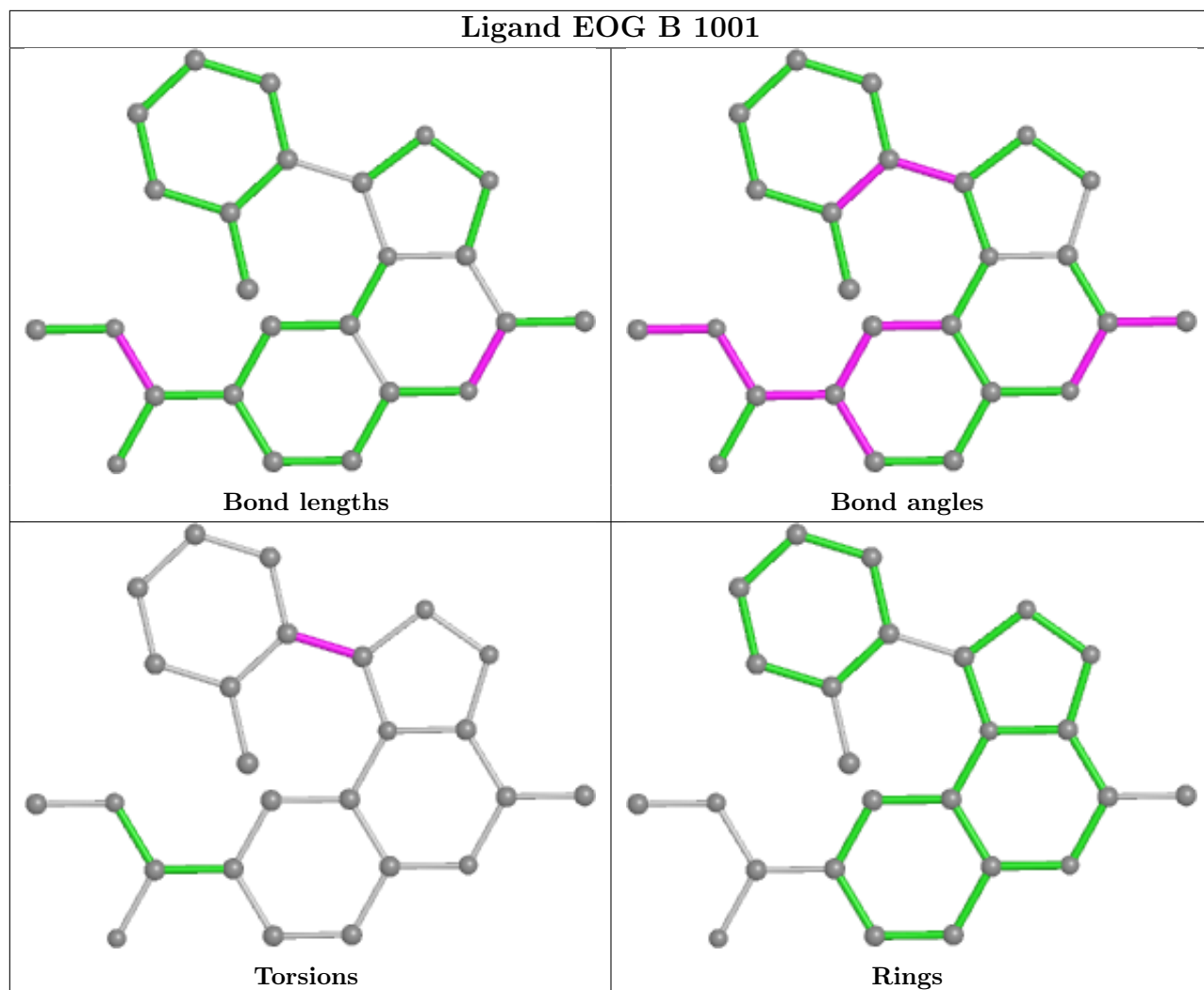
Mol	Chain	Res	Type	Clashes	Symm-Clashes
2	A	1001	EOG	1	0
2	D	1001	EOG	1	0

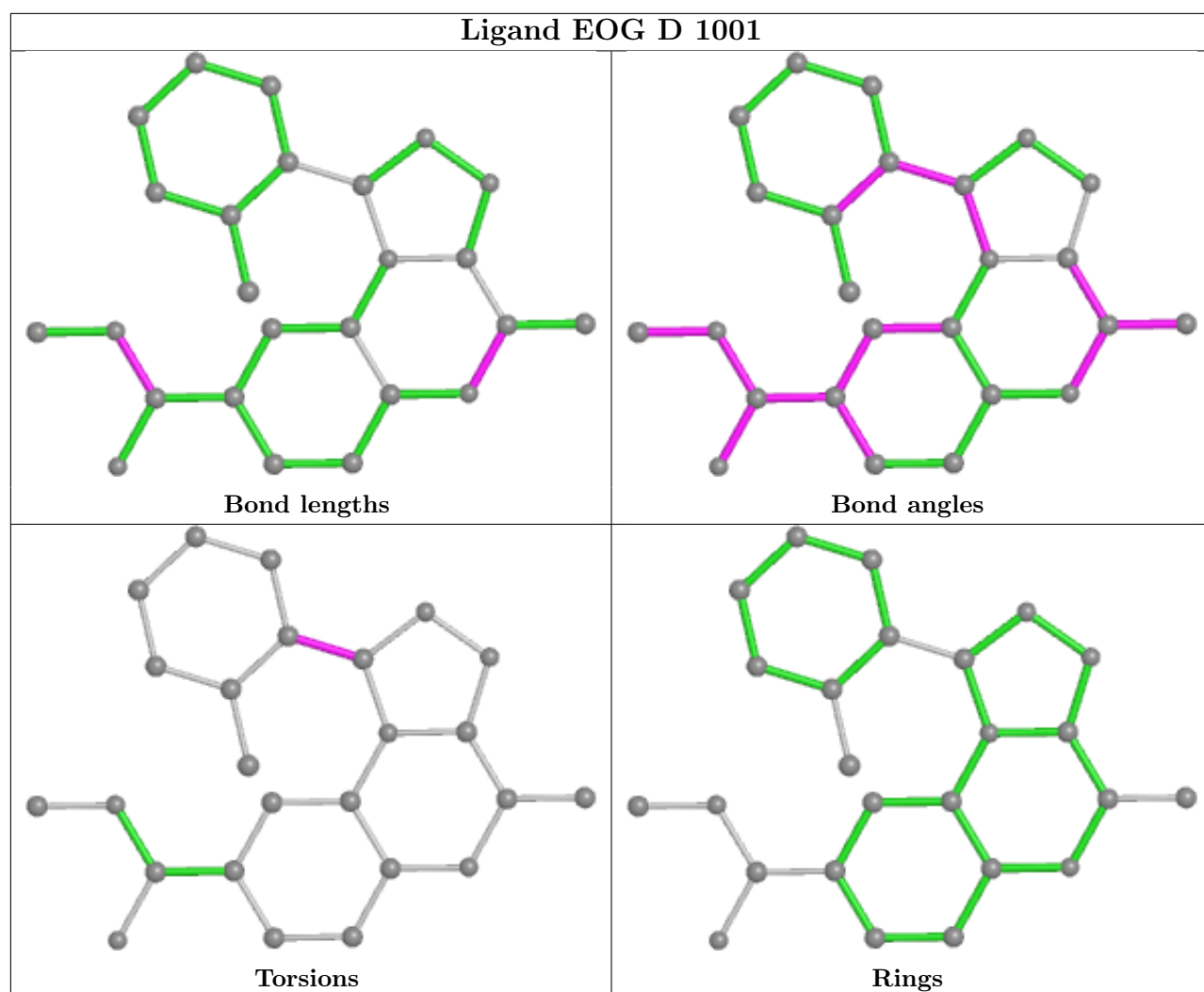
The following is a two-dimensional graphical depiction of Mogul quality analysis of bond lengths, bond angles, torsion angles, and ring geometry for all instances of the Ligand of Interest. In addition, ligands with molecular weight > 250 and outliers as shown on the validation Tables will also be included. For torsion angles, if less than 5% of the Mogul distribution of torsion angles is within 10 degrees of the torsion angle in question, then that torsion angle is considered an outlier. Any bond that is central to one or more torsion angles identified as an outlier by Mogul will be highlighted in the graph. For rings, the root-mean-square deviation (RMSD) between the ring in question and similar rings identified by Mogul is calculated over all ring torsion angles. If the average RMSD is greater than 60 degrees and the minimal RMSD between the ring in question and any Mogul-identified rings is also greater than 60 degrees, then that ring is considered an outlier. The outliers are highlighted in purple. The color gray indicates Mogul did not find sufficient equivalents in the CSD to analyse the geometry.











## 5.7 Other polymers [i](#)

There are no such residues in this entry.

## 5.8 Polymer linkage issues [i](#)

There are no chain breaks in this entry.

## 6 Fit of model and data

### 6.1 Protein, DNA and RNA chains

In the following table, the column labelled ‘#RSRZ > 2’ contains the number (and percentage) of RSRZ outliers, followed by percent RSRZ outliers for the chain as percentile scores relative to all X-ray entries and entries of similar resolution. The OWAB column contains the minimum, median, 95<sup>th</sup> percentile and maximum values of the occupancy-weighted average B-factor per residue. The column labelled ‘Q < 0.9’ lists the number of (and percentage) of residues with an average occupancy less than 0.9.

Mol	Chain	Analysed	<RSRZ>	#RSRZ>2	OWAB(Å <sup>2</sup> )	Q<0.9
1	A	342/342 (100%)	0.06	9 (2%) 56 56	9, 21, 39, 55	0
1	B	339/342 (99%)	0.10	10 (2%) 51 52	11, 23, 39, 48	0
1	C	331/342 (96%)	0.44	26 (7%) 12 13	12, 26, 48, 63	0
1	D	327/342 (95%)	0.16	13 (3%) 38 39	12, 23, 42, 61	0
All	All	1339/1368 (97%)	0.19	58 (4%) 35 36	9, 23, 43, 63	0

All (58) RSRZ outliers are listed below:

Mol	Chain	Res	Type	RSRZ
1	C	582	TYR	6.4
1	C	680	TYR	5.2
1	D	594	ALA	5.1
1	C	593	VAL	5.0
1	C	584	LYS	4.5
1	D	592	PRO	4.2
1	A	909	SER	4.2
1	B	722	GLU	3.7
1	B	578	MET	3.6
1	C	595	ALA	3.3
1	C	594	ALA	3.2
1	C	583	THR	3.2
1	D	741	HIS	3.2
1	D	591	GLN	3.1
1	D	590	ILE	3.0
1	B	723	GLY	3.0
1	C	592	PRO	3.0
1	C	809	LEU	2.9
1	C	843	ARG	2.9
1	B	721	SER	2.9
1	C	910	ASN	2.8

*Continued on next page...*

*Continued from previous page...*

Mol	Chain	Res	Type	RSRZ
1	D	599	ASN	2.8
1	C	676	GLU	2.8
1	D	593	VAL	2.8
1	D	765	ILE	2.7
1	A	598	SER	2.7
1	C	897	LYS	2.7
1	C	585	LEU	2.6
1	B	664	VAL	2.6
1	C	693	CYS	2.5
1	A	843	ARG	2.5
1	C	914	ASP	2.4
1	B	843	ARG	2.4
1	D	909	SER	2.4
1	C	664	VAL	2.4
1	D	596	ILE	2.4
1	A	664	VAL	2.3
1	A	689	LEU	2.3
1	A	599	ASN	2.3
1	D	843	ARG	2.3
1	C	765	ILE	2.3
1	D	617	MET	2.2
1	B	636	CYS	2.2
1	B	897	LYS	2.2
1	C	590	ILE	2.2
1	C	909	SER	2.2
1	C	893	GLU	2.2
1	D	598	SER	2.1
1	A	809	LEU	2.1
1	C	655	TYR	2.1
1	C	591	GLN	2.1
1	A	842	ASN	2.1
1	B	631	ASN	2.1
1	B	910	ASN	2.1
1	C	689	LEU	2.1
1	C	770	LEU	2.0
1	C	916	LEU	2.0
1	A	917	ASP	2.0

## 6.2 Non-standard residues in protein, DNA, RNA chains

There are no non-standard protein/DNA/RNA residues in this entry.

### 6.3 Carbohydrates [i](#)

There are no monosaccharides in this entry.

### 6.4 Ligands [i](#)

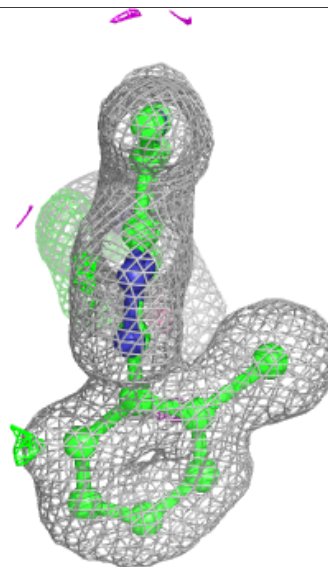
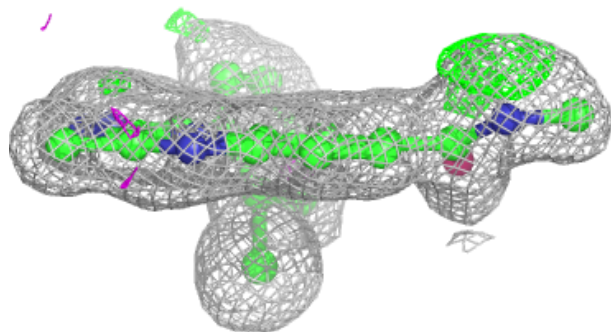
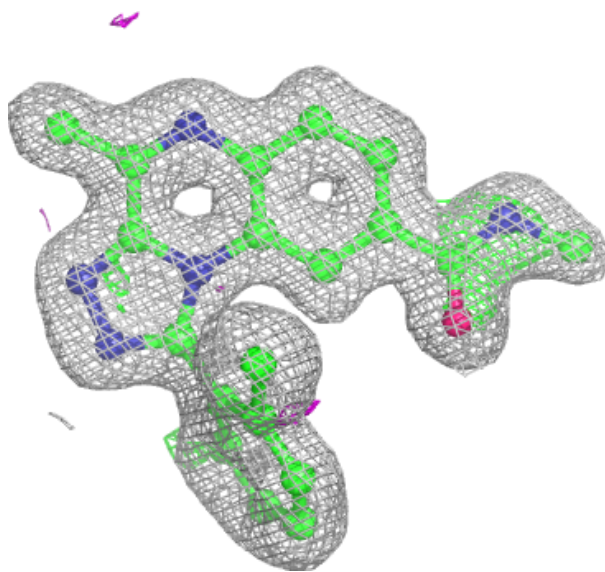
In the following table, the Atoms column lists the number of modelled atoms in the group and the number defined in the chemical component dictionary. The B-factors column lists the minimum, median, 95<sup>th</sup> percentile and maximum values of B factors of atoms in the group. The column labelled 'Q< 0.9' lists the number of atoms with occupancy less than 0.9.

Mol	Type	Chain	Res	Atoms	RSCC	RSR	B-factors( $\text{\AA}^2$ )	Q<0.9
2	EOG	A	1001	25/25	0.96	0.10	12,15,25,33	0
2	EOG	B	1001	25/25	0.96	0.09	13,16,23,33	0
2	EOG	C	1001	25/25	0.96	0.10	14,18,28,38	0
2	EOG	D	1001	25/25	0.96	0.12	12,15,21,29	0
4	MG	C	1003	1/1	0.99	0.10	13,13,13,13	0
4	MG	D	1003	1/1	0.99	0.08	11,11,11,11	0
3	ZN	C	1002	1/1	1.00	0.06	15,15,15,15	0
3	ZN	D	1002	1/1	1.00	0.05	14,14,14,14	0
4	MG	A	1003	1/1	1.00	0.09	10,10,10,10	0
4	MG	B	1003	1/1	1.00	0.10	12,12,12,12	0
3	ZN	A	1002	1/1	1.00	0.05	13,13,13,13	0
3	ZN	B	1002	1/1	1.00	0.06	14,14,14,14	0

The following is a graphical depiction of the model fit to experimental electron density of all instances of the Ligand of Interest. In addition, ligands with molecular weight > 250 and outliers as shown on the geometry validation Tables will also be included. Each fit is shown from different orientation to approximate a three-dimensional view.

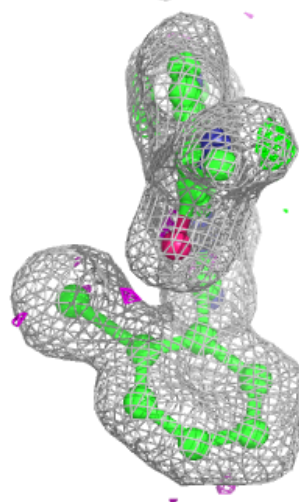
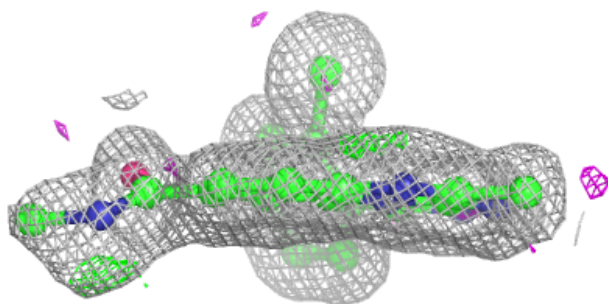
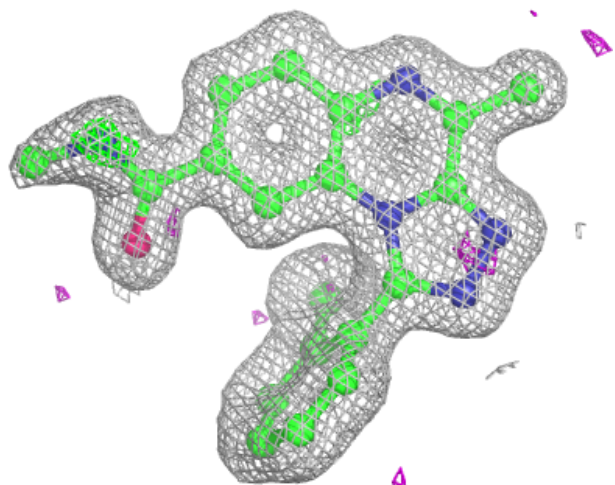
**Electron density around EOG A 1001:**

$2mF_o-DF_c$  (at 0.7 rmsd) in gray  
 $mF_o-DF_c$  (at 3 rmsd) in purple (negative)  
and green (positive)



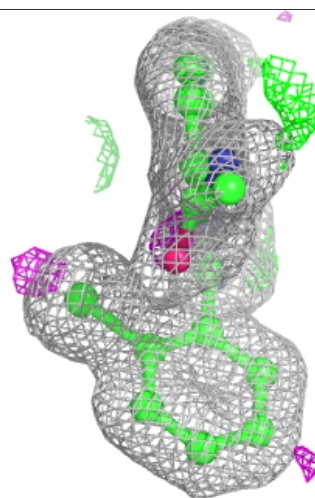
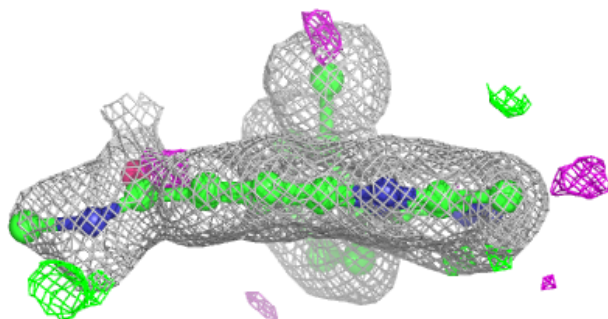
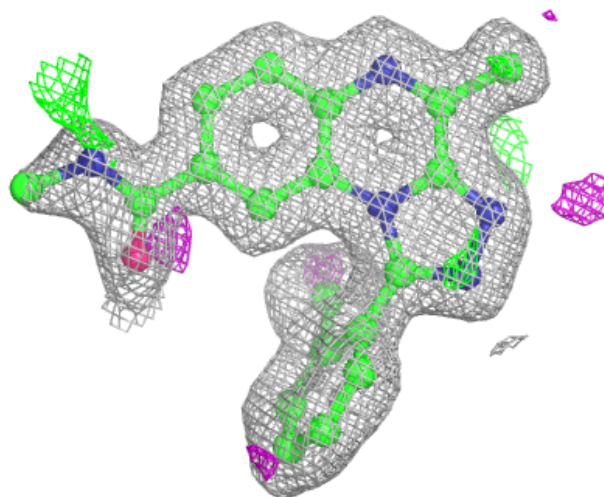
**Electron density around EOG B 1001:**

$2mF_o-DF_c$  (at 0.7 rmsd) in gray  
 $mF_o-DF_c$  (at 3 rmsd) in purple (negative)  
and green (positive)

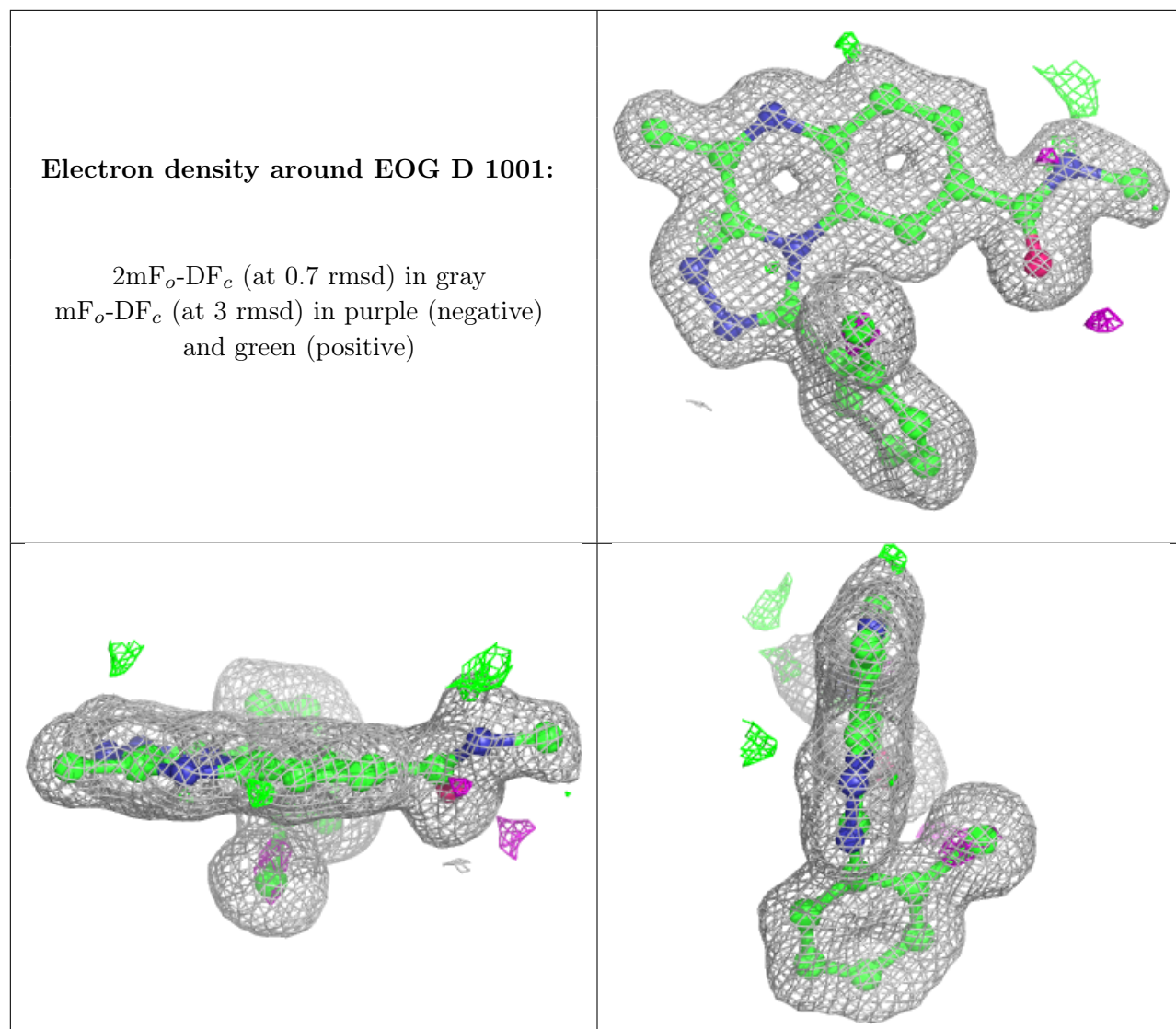


**Electron density around EOG C 1001:**

$2mF_o-DF_c$  (at 0.7 rmsd) in gray  
 $mF_o-DF_c$  (at 3 rmsd) in purple (negative)  
and green (positive)







## 6.5 Other polymers [i](#)

There are no such residues in this entry.