



Full wwPDB X-ray Structure Validation Report ⓘ

Nov 3, 2024 – 01:43 PM JST

PDB ID : 5Z15
Title : Crystal structure of human TLR8 in complex with CU-CPT9c
Authors : Tanji, H.; Ohto, U.; Shimizu, T.
Deposited on : 2017-12-25
Resolution : 2.90 Å(reported)

This is a Full wwPDB X-ray Structure Validation Report for a publicly released PDB entry.

We welcome your comments at validation@mail.wwpdb.org

A user guide is available at

<https://www.wwpdb.org/validation/2017/XrayValidationReportHelp>

with specific help available everywhere you see the ⓘ symbol.

The types of validation reports are described at

<http://www.wwpdb.org/validation/2017/FAQs#types>.

The following versions of software and data (see [references ⓘ](#)) were used in the production of this report:

MolProbity : 4.02b-467
Mogul : 1.8.5 (274361), CSD as541be (2020)
Xtriage (Phenix) : 1.13
EDS : 3.0
buster-report : 1.1.7 (2018)
Percentile statistics : 20231227.v01 (using entries in the PDB archive December 27th 2023)
CCP4 : 9.0.003 (Gargrove)
Density-Fitness : 1.0.11
Ideal geometry (proteins) : Engh & Huber (2001)
Ideal geometry (DNA, RNA) : Parkinson et al. (1996)
Validation Pipeline (wwPDB-VP) : 2.39

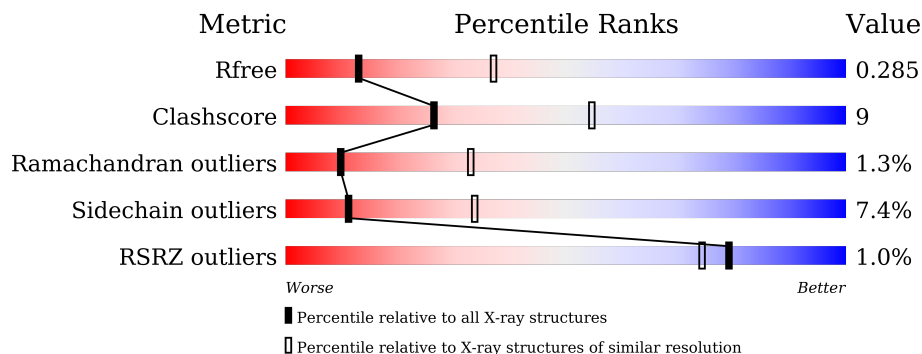
1 Overall quality at a glance

The following experimental techniques were used to determine the structure:

X-RAY DIFFRACTION

The reported resolution of this entry is 2.90 Å.

Percentile scores (ranging between 0-100) for global validation metrics of the entry are shown in the following graphic. The table shows the number of entries on which the scores are based.



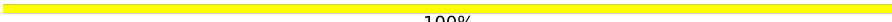
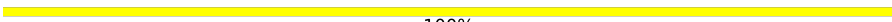
Metric	Whole archive (#Entries)	Similar resolution (#Entries, resolution range(Å))
R_{free}	164625	2335 (2.90-2.90)
Clashscore	180529	2564 (2.90-2.90)
Ramachandran outliers	177936	2514 (2.90-2.90)
Sidechain outliers	177891	2516 (2.90-2.90)
RSRZ outliers	164620	2337 (2.90-2.90)

The table below summarises the geometric issues observed across the polymeric chains and their fit to the electron density. The red, orange, yellow and green segments of the lower bar indicate the fraction of residues that contain outliers for ≥ 3 , 2, 1 and 0 types of geometric quality criteria respectively. A grey segment represents the fraction of residues that are not modelled. The numeric value for each fraction is indicated below the corresponding segment, with a dot representing fractions $\leq 5\%$. The upper red bar (where present) indicates the fraction of residues that have poor fit to the electron density. The numeric value is given above the bar.

Mol	Chain	Length	Quality of chain
1	A	811	
1	B	811	
2	C	4	
3	D	2	
3	G	2	
4	E	5	

Continued on next page...

Continued from previous page...

Mol	Chain	Length	Quality of chain
5	F	4	 100%
5	H	4	 100%

2 Entry composition

There are 9 unique types of molecules in this entry. The entry contains 12314 atoms, of which 0 are hydrogens and 0 are deuteriums.

In the tables below, the ZeroOcc column contains the number of atoms modelled with zero occupancy, the AltConf column contains the number of residues with at least one atom in alternate conformation and the Trace column contains the number of residues modelled with at most 2 atoms.

- Molecule 1 is a protein called Toll-like receptor 8.

Mol	Chain	Residues	Atoms					ZeroOcc	AltConf	Trace
			Total	C	N	O	S			
1	A	743	Total	C	N	O	S	0	0	0
			5972	3818	1018	1117	19			
1	B	738	Total	C	N	O	S	0	0	0
			5932	3797	1003	1113	19			

There are 20 discrepancies between the modelled and reference sequences:

Chain	Residue	Modelled	Actual	Comment	Reference
A	23	ARG	-	expression tag	UNP Q9NR97
A	24	SER	-	expression tag	UNP Q9NR97
A	25	PRO	-	expression tag	UNP Q9NR97
A	26	TRP	-	expression tag	UNP Q9NR97
A	828	GLU	-	expression tag	UNP Q9NR97
A	829	PHE	-	expression tag	UNP Q9NR97
A	830	LEU	-	expression tag	UNP Q9NR97
A	831	VAL	-	expression tag	UNP Q9NR97
A	832	PRO	-	expression tag	UNP Q9NR97
A	833	ARG	-	expression tag	UNP Q9NR97
B	23	ARG	-	expression tag	UNP Q9NR97
B	24	SER	-	expression tag	UNP Q9NR97
B	25	PRO	-	expression tag	UNP Q9NR97
B	26	TRP	-	expression tag	UNP Q9NR97
B	828	GLU	-	expression tag	UNP Q9NR97
B	829	PHE	-	expression tag	UNP Q9NR97
B	830	LEU	-	expression tag	UNP Q9NR97
B	831	VAL	-	expression tag	UNP Q9NR97
B	832	PRO	-	expression tag	UNP Q9NR97
B	833	ARG	-	expression tag	UNP Q9NR97

- Molecule 2 is an oligosaccharide called alpha-D-mannopyranose-(1-3)-beta-D-mannopyranose-(1-4)-2-acetamido-2-deoxy-beta-D-gluco pyranose-(1-4)-2-acetamido-2-deoxy-beta-D-gluco pyranose.



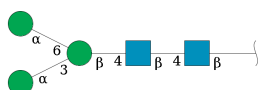
Mol	Chain	Residues	Atoms				ZeroOcc	AltConf	Trace
			Total	C	N	O			
2	C	4	50	28	2	20	0	0	0

- Molecule 3 is an oligosaccharide called 2-acetamido-2-deoxy-beta-D-glucopyranose-(1-4)-2-acetamido-2-deoxy-beta-D-glucopyranose.



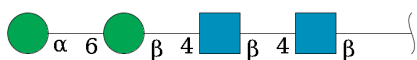
Mol	Chain	Residues	Atoms				ZeroOcc	AltConf	Trace
			Total	C	N	O			
3	D	2	28	16	2	10	0	0	0
3	G	2	28	16	2	10	0	0	0

- Molecule 4 is an oligosaccharide called alpha-D-mannopyranose-(1-3)-[alpha-D-mannopyranose-(1-6)]beta-D-mannopyranose-(1-4)-2-acetamido-2-deoxy-beta-D-glucopyranose-(1-4)-2-acetamido-2-deoxy-beta-D-glucopyranose.



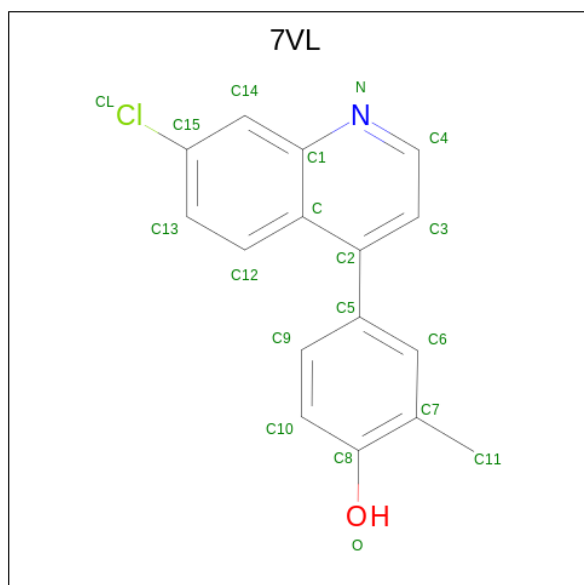
Mol	Chain	Residues	Atoms				ZeroOcc	AltConf	Trace
			Total	C	N	O			
4	E	5	61	34	2	25	0	0	0

- Molecule 5 is an oligosaccharide called alpha-D-mannopyranose-(1-6)-beta-D-mannopyranose-(1-4)-2-acetamido-2-deoxy-beta-D-glucopyranose-(1-4)-2-acetamido-2-deoxy-beta-D-glucopyranose.



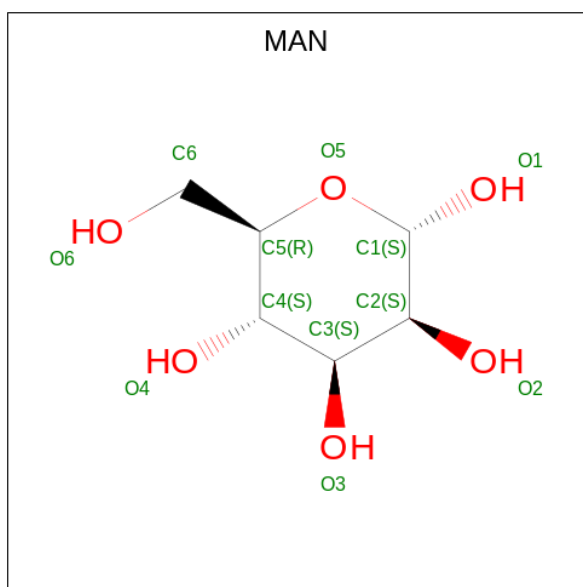
Mol	Chain	Residues	Atoms				ZeroOcc	AltConf	Trace
5	F	4	Total	C	N	O	0	0	0
			50	28	2	20			
5	H	4	Total	C	N	O	0	0	0
			50	28	2	20			

- Molecule 6 is 4-(7-chloranylquinolin-4-yl)-2-methyl-phenol (three-letter code: 7VL) (formula: C₁₆H₁₂ClNO).



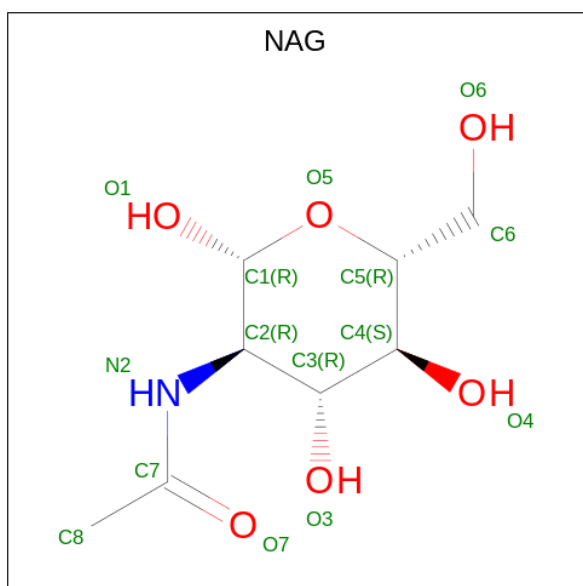
Mol	Chain	Residues	Atoms					ZeroOcc	AltConf
6	A	1	Total	C	Cl	N	O	0	0
			19	16	1	1	1		
6	A	1	Total	C	Cl	N	O	0	0
			19	16	1	1	1		

- Molecule 7 is alpha-D-mannopyranose (three-letter code: MAN) (formula: C₆H₁₂O₆).



Mol	Chain	Residues	Atoms			ZeroOcc	AltConf
7	A	1	Total	C	O	0	0
			11	6	5		

- Molecule 8 is 2-acetamido-2-deoxy-beta-D-glucopyranose (three-letter code: NAG) (formula: $C_8H_{15}NO_6$).



Mol	Chain	Residues	Atoms				ZeroOcc	AltConf
8	A	1	Total	C	N	O	0	0
			14	8	1	5		
8	A	1	Total	C	N	O	0	0
			14	8	1	5		

Continued on next page...

Continued from previous page...

Mol	Chain	Residues	Atoms				ZeroOcc	AltConf
8	A	1	Total	C	N	O	0	0
			14	8	1	5		
8	B	1	Total	C	N	O	0	0
			14	8	1	5		

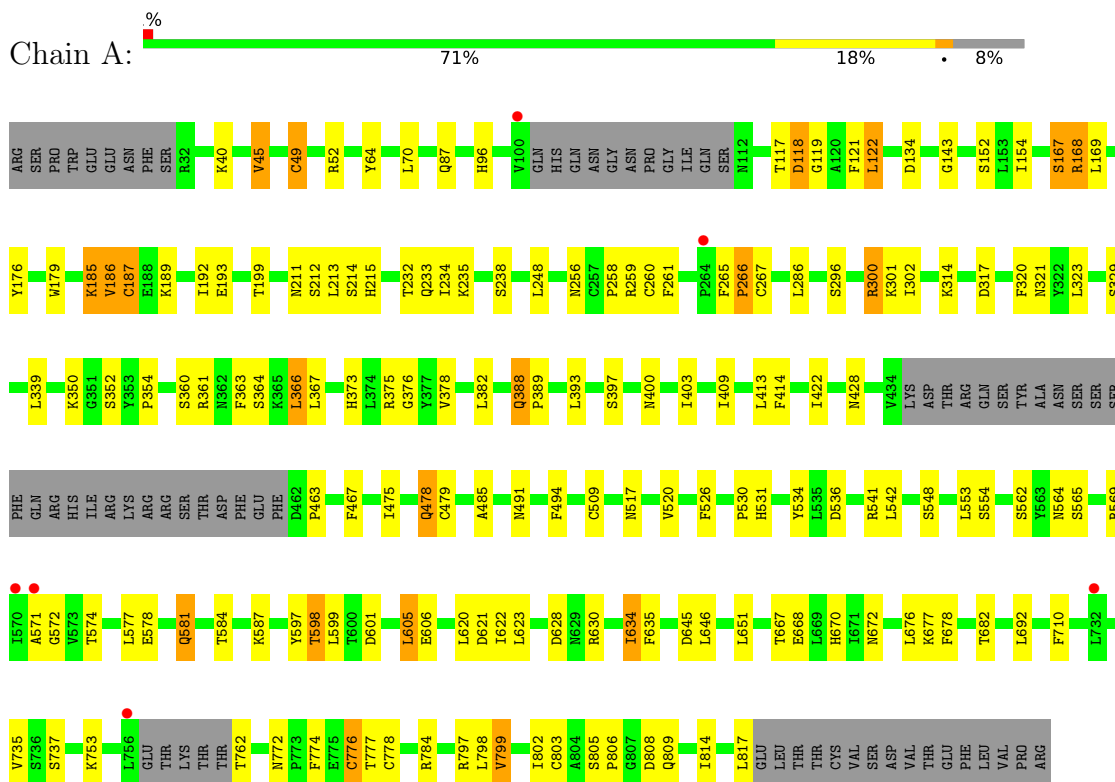
- Molecule 9 is water.

Mol	Chain	Residues	Atoms		ZeroOcc	AltConf
9	A	20	Total	O	0	0
			20	20		
9	B	18	Total	O	0	0
			18	18		

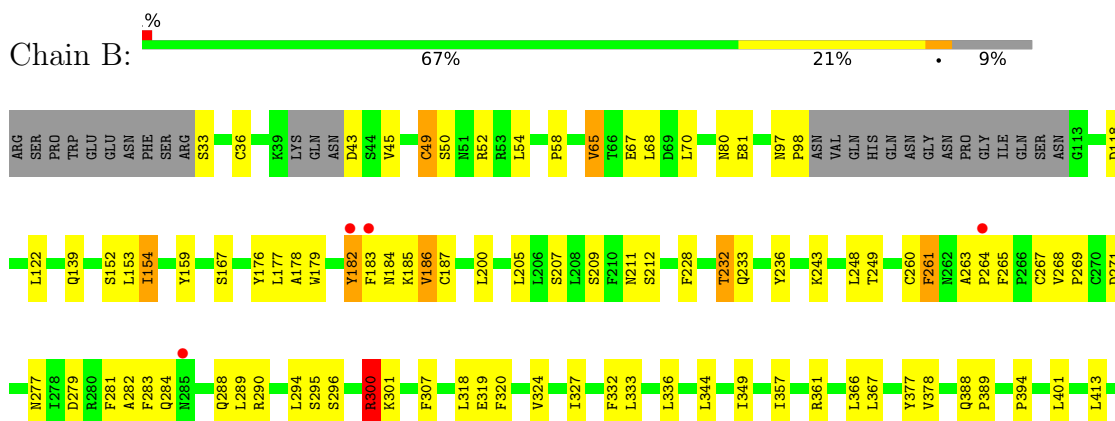
3 Residue-property plots [i](#)

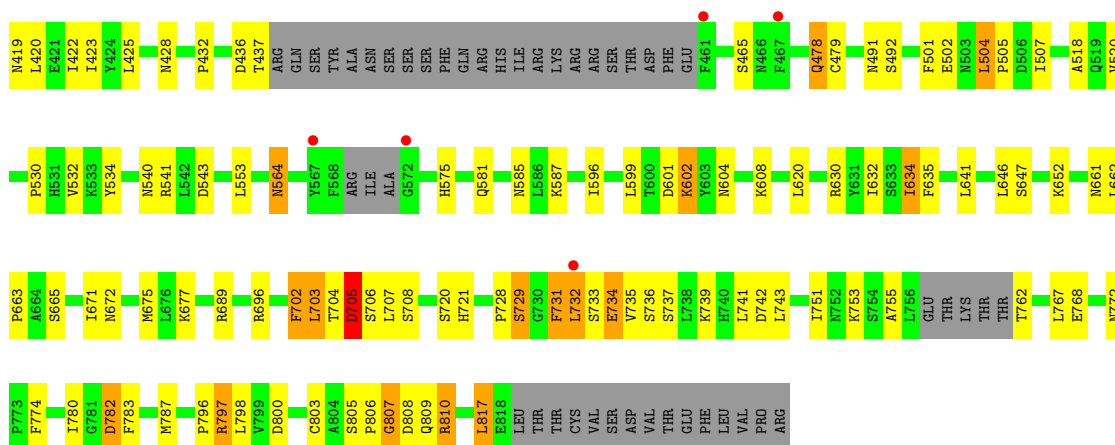
These plots are drawn for all protein, RNA, DNA and oligosaccharide chains in the entry. The first graphic for a chain summarises the proportions of the various outlier classes displayed in the second graphic. The second graphic shows the sequence view annotated by issues in geometry and electron density. Residues are color-coded according to the number of geometric quality criteria for which they contain at least one outlier: green = 0, yellow = 1, orange = 2 and red = 3 or more. A red dot above a residue indicates a poor fit to the electron density ($RSRZ > 2$). Stretches of 2 or more consecutive residues without any outlier are shown as a green connector. Residues present in the sample, but not in the model, are shown in grey.

- Molecule 1: Toll-like receptor 8



- Molecule 1: Toll-like receptor 8





- Molecule 2: alpha-D-mannopyranose-(1-3)-beta-D-mannopyranose-(1-4)-2-acetamido-2-deoxy-beta-D-glucopyranose-(1-4)-2-acetamido-2-deoxy-beta-D-glucopyranose

Chain C: 75% 25%

MAG1
MAG2
MAN3
MAN4

- Molecule 3: 2-acetamido-2-deoxy-beta-D-glucopyranose-(1-4)-2-acetamido-2-deoxy-beta-D-glucopyranose

Chain D: 100%

MAG1
MAG2

- Molecule 3: 2-acetamido-2-deoxy-beta-D-glucopyranose-(1-4)-2-acetamido-2-deoxy-beta-D-glucopyranose

Chain G: 100%

MAG1
MAG2

- Molecule 4: alpha-D-mannopyranose-(1-3)-[alpha-D-mannopyranose-(1-6)]beta-D-mannopyranose-(1-4)-2-acetamido-2-deoxy-beta-D-glucopyranose-(1-4)-2-acetamido-2-deoxy-beta-D-glucopyranose

Chain E: 20% 60% 20%

MAG1
MAG2
MAN3
MAN4
MAN5

- Molecule 5: alpha-D-mannopyranose-(1-6)-beta-D-mannopyranose-(1-4)-2-acetamido-2-deoxy-beta-D-glucopyranose-(1-4)-2-acetamido-2-deoxy-beta-D-glucopyranose

Chain F: 100%

MAG1
MAG2
BMA3
MAN4

- Molecule 5: alpha-D-mannopyranose-(1-6)-beta-D-mannopyranose-(1-4)-2-acetamido-2-deoxy-beta-D-glucopyranose-(1-4)-2-acetamido-2-deoxy-beta-D-glucopyranose

Chain H:

100%

MAG1
MAG2
BMA3
MAN4

4 Data and refinement statistics

Property	Value	Source
Space group	C 1 2 1	Depositor
Cell constants a, b, c, α , β , γ	143.89Å 98.75Å 139.48Å 90.00° 109.04° 90.00°	Depositor
Resolution (Å)	131.85 – 2.90 131.85 – 2.90	Depositor EDS
% Data completeness (in resolution range)	98.5 (131.85-2.90) 98.8 (131.85-2.90)	Depositor EDS
R_{merge}	(Not available)	Depositor
R_{sym}	(Not available)	Depositor
$\langle I/\sigma(I) \rangle$ ¹	2.41 (at 2.91Å)	Xtrriage
Refinement program	REFMAC 5.8.0073	Depositor
R, R_{free}	0.202 , 0.289 0.202 , 0.285	Depositor DCC
R_{free} test set	2048 reflections (4.98%)	wwPDB-VP
Wilson B-factor (Å ²)	81.2	Xtrriage
Anisotropy	0.060	Xtrriage
Bulk solvent k_{sol} (e/Å ³), B_{sol} (Å ²)	0.31 , 35.4	EDS
L-test for twinning ²	$\langle L \rangle = 0.49$, $\langle L^2 \rangle = 0.33$	Xtrriage
Estimated twinning fraction	No twinning to report.	Xtrriage
F_o, F_c correlation	0.95	EDS
Total number of atoms	12314	wwPDB-VP
Average B, all atoms (Å ²)	83.0	wwPDB-VP

Xtrriage's analysis on translational NCS is as follows: *The largest off-origin peak in the Patterson function is 3.70% of the height of the origin peak. No significant pseudotranslation is detected.*

¹Intensities estimated from amplitudes.

²Theoretical values of $\langle |L| \rangle$, $\langle L^2 \rangle$ for acentric reflections are 0.5, 0.333 respectively for untwinned datasets, and 0.375, 0.2 for perfectly twinned datasets.

5 Model quality [i](#)

5.1 Standard geometry [i](#)

Bond lengths and bond angles in the following residue types are not validated in this section: 7VL, BMA, NAG, MAN

The Z score for a bond length (or angle) is the number of standard deviations the observed value is removed from the expected value. A bond length (or angle) with $|Z| > 5$ is considered an outlier worth inspection. RMSZ is the root-mean-square of all Z scores of the bond lengths (or angles).

Mol	Chain	Bond lengths		Bond angles	
		RMSZ	# Z >5	RMSZ	# Z >5
1	A	0.57	0/6093	0.76	0/8263
1	B	0.55	0/6052	0.76	2/8205 (0.0%)
All	All	0.56	0/12145	0.76	2/16468 (0.0%)

There are no bond length outliers.

All (2) bond angle outliers are listed below:

Mol	Chain	Res	Type	Atoms	Z	Observed(°)	Ideal(°)
1	B	300	ARG	NE-CZ-NH1	5.76	123.18	120.30
1	B	807	GLY	N-CA-C	-5.04	100.50	113.10

There are no chirality outliers.

There are no planarity outliers.

5.2 Too-close contacts [i](#)

In the following table, the Non-H and H(model) columns list the number of non-hydrogen atoms and hydrogen atoms in the chain respectively. The H(added) column lists the number of hydrogen atoms added and optimized by MolProbity. The Clashes column lists the number of clashes within the asymmetric unit, whereas Symm-Clashes lists symmetry-related clashes.

Mol	Chain	Non-H	H(model)	H(added)	Clashes	Symm-Clashes
1	A	5972	0	5970	94	0
1	B	5932	0	5919	132	0
2	C	50	0	43	2	0
3	D	28	0	25	0	0
3	G	28	0	25	0	0
4	E	61	0	52	2	0
5	F	50	0	43	0	0

Continued on next page...

Continued from previous page...

Mol	Chain	Non-H	H(model)	H(added)	Clashes	Symm-Clashes
5	H	50	0	43	0	0
6	A	38	0	0	0	0
7	A	11	0	10	0	0
8	A	42	0	39	0	0
8	B	14	0	13	1	0
9	A	20	0	0	1	0
9	B	18	0	0	1	0
All	All	12314	0	12182	224	0

The all-atom clashscore is defined as the number of clashes found per 1000 atoms (including hydrogen atoms). The all-atom clashscore for this structure is 9.

All (224) close contacts within the same asymmetric unit are listed below, sorted by their clash magnitude.

Atom-1	Atom-2	Interatomic distance (Å)	Clash overlap (Å)
1:B:751:ILE:O	1:B:780:ILE:HD12	1.45	1.17
1:B:179:TRP:CE3	1:B:182:TYR:HE2	1.82	0.98
1:A:167:SER:HG	1:A:199:THR:HG1	1.10	0.94
1:B:704:THR:HA	1:B:705:ASP:HB3	1.52	0.89
1:B:720:SER:OG	1:B:742:ASP:OD2	1.92	0.87
1:B:478:GLN:H	1:B:478:GLN:HE21	1.26	0.80
1:A:777:THR:OG1	1:A:778:CYS:HA	1.82	0.80
1:B:179:TRP:HE3	1:B:182:TYR:HE2	1.29	0.79
1:A:776:CYS:O	1:A:806:PRO:HD2	1.82	0.79
1:A:213:LEU:O	1:A:215:HIS:N	2.16	0.78
1:B:185:LYS:HB2	1:B:186:VAL:HB	1.65	0.78
1:B:703:LEU:HD12	1:B:731:PHE:CE1	2.19	0.78
1:B:780:ILE:HD13	1:B:783:PHE:HB2	1.66	0.77
1:B:211:ASN:O	1:B:232:THR:HA	1.84	0.77
1:A:154:ILE:HD11	1:A:176:TYR:HB3	1.67	0.77
1:B:179:TRP:CE3	1:B:182:TYR:CE2	2.72	0.76
1:A:403:ILE:HG22	1:A:403:ILE:O	1.85	0.74
1:B:179:TRP:HE3	1:B:182:TYR:CE2	2.05	0.74
1:B:728:PRO:HA	1:B:729:SER:CB	2.19	0.72
1:B:735:VAL:O	1:B:737:SER:N	2.22	0.72
1:B:260:CYS:SG	1:B:267:CYS:C	2.70	0.70
1:A:265:PHE:HB3	1:A:266:PRO:CD	2.22	0.69
1:B:260:CYS:SG	1:B:268:VAL:N	2.66	0.69
1:A:296:SER:HA	1:A:320:PHE:O	1.94	0.68
1:A:542:LEU:N	1:A:564:ASN:HD21	1.93	0.67
1:B:702:PHE:C	1:B:703:LEU:HD23	2.17	0.66

Continued on next page...

Continued from previous page...

Atom-1	Atom-2	Interatomic distance (Å)	Clash overlap (Å)
1:B:729:SER:N	1:B:755:ALA:HA	2.11	0.66
1:B:212:SER:HB2	1:B:233:GLN:NE2	2.11	0.65
1:A:634:ILE:HD12	1:A:635:PHE:CZ	2.32	0.64
1:A:478:GLN:H	1:A:478:GLN:HE21	1.45	0.64
1:B:518:ALA:HA	1:B:541:ARG:O	1.99	0.62
1:B:159:TYR:CG	1:B:187:CYS:HB3	2.35	0.62
1:B:728:PRO:O	1:B:731:PHE:HB2	2.00	0.61
1:A:265:PHE:HB3	1:A:266:PRO:HD2	1.81	0.61
1:A:258:PRO:HG2	1:A:260:CYS:SG	2.41	0.60
1:B:186:VAL:HG12	1:B:186:VAL:O	2.01	0.60
1:B:260:CYS:HB2	1:B:269:PRO:HG3	1.82	0.60
1:A:428:ASN:O	1:A:491:ASN:HA	2.02	0.59
1:A:572:GLY:HA2	1:A:597:TYR:OH	2.02	0.59
1:B:413:LEU:HD12	1:B:413:LEU:C	2.22	0.59
1:B:704:THR:HA	1:B:705:ASP:CB	2.29	0.58
1:A:49:CYS:HB3	1:A:70:LEU:HD23	1.86	0.58
1:B:52:ARG:O	1:B:54:LEU:HD23	2.04	0.58
1:B:817:LEU:HD13	1:B:817:LEU:N	2.17	0.58
1:B:300:ARG:HG2	1:B:300:ARG:HH11	1.68	0.58
1:B:780:ILE:HD11	1:B:782:ASP:HB2	1.85	0.58
1:A:300:ARG:HH11	1:A:300:ARG:HG2	1.68	0.58
1:B:809:GLN:OE1	1:B:809:GLN:HA	2.04	0.57
1:A:562:SER:CB	4:E:1:NAG:H82	2.36	0.56
1:B:728:PRO:HA	1:B:729:SER:HB3	1.87	0.56
1:A:577:LEU:HD12	1:A:605:LEU:HD11	1.87	0.56
1:A:597:TYR:CE2	1:A:598:THR:OG1	2.59	0.56
1:A:620:LEU:HD11	1:A:646:LEU:HD22	1.88	0.56
1:B:732:LEU:HD13	1:B:732:LEU:N	2.20	0.55
1:A:562:SER:HB2	4:E:1:NAG:H82	1.88	0.55
1:B:505:PRO:O	1:B:507:ILE:HG12	2.06	0.55
1:A:735:VAL:O	1:A:737:SER:N	2.39	0.55
1:A:169:LEU:N	1:A:169:LEU:HD23	2.22	0.55
1:B:184:ASN:HB3	1:B:186:VAL:O	2.07	0.55
1:B:296:SER:HA	1:B:320:PHE:O	2.07	0.55
1:B:608:LYS:O	8:B:911:NAG:H82	2.07	0.54
1:B:478:GLN:H	1:B:478:GLN:NE2	2.02	0.54
1:B:307:PHE:CD1	1:B:336:LEU:HD21	2.42	0.54
1:A:211:ASN:O	1:A:232:THR:HA	2.08	0.54
1:B:632:ILE:HG22	1:B:661:ASN:HD22	1.73	0.54
1:B:324:VAL:HG23	9:B:1008:HOH:O	2.07	0.54
1:B:780:ILE:HD13	1:B:783:PHE:CB	2.38	0.54

Continued on next page...

Continued from previous page...

Atom-1	Atom-2	Interatomic distance (Å)	Clash overlap (Å)
1:B:729:SER:CA	1:B:755:ALA:HA	2.37	0.53
1:A:185:LYS:O	1:A:186:VAL:HG12	2.09	0.53
1:A:645:ASP:HA	1:A:670:HIS:HB2	1.89	0.53
1:B:264:PRO:HG2	1:B:265:PHE:CD1	2.44	0.53
1:A:179:TRP:NE1	1:A:463:PRO:HB3	2.23	0.53
1:A:478:GLN:H	1:A:478:GLN:NE2	2.05	0.53
1:A:621:ASP:OD1	1:A:622:ILE:N	2.41	0.53
1:A:382:LEU:HD23	1:A:409:ILE:HG23	1.91	0.53
1:A:667:THR:HG22	1:A:668:GLU:HG3	1.90	0.52
1:B:45:VAL:HG13	1:B:65:VAL:HA	1.91	0.52
1:B:532:VAL:HB	1:B:553:LEU:HD22	1.92	0.52
1:B:729:SER:H	1:B:755:ALA:HA	1.74	0.52
1:B:575:HIS:O	1:B:599:LEU:HA	2.10	0.51
1:A:259:ARG:NH1	1:A:321:ASN:O	2.44	0.51
1:A:809:GLN:NE2	1:A:817:LEU:HD11	2.25	0.51
1:A:678:PHE:HB3	9:A:1008:HOH:O	2.10	0.50
1:B:652:LYS:HA	1:B:675:MET:O	2.11	0.50
1:A:361:ARG:HD3	1:A:389:PRO:HG3	1.93	0.50
1:B:281:PHE:O	1:B:284:GLN:N	2.42	0.50
1:A:261:PHE:CE1	1:B:520:VAL:HG21	2.46	0.50
1:B:186:VAL:O	1:B:186:VAL:CG1	2.58	0.50
1:B:540:ASN:C	1:B:564:ASN:ND2	2.65	0.50
1:B:808:ASP:OD2	1:B:808:ASP:N	2.45	0.50
1:A:651:LEU:O	1:A:676:LEU:HD23	2.12	0.50
1:B:236:TYR:HA	1:B:277:ASN:O	2.11	0.50
1:A:581:GLN:HA	1:A:606:GLU:O	2.11	0.50
1:B:428:ASN:O	1:B:491:ASN:HA	2.12	0.49
1:B:357:ILE:HG13	1:B:377:TYR:CZ	2.47	0.49
1:B:704:THR:OG1	1:B:706:SER:N	2.43	0.49
1:B:728:PRO:HA	1:B:729:SER:HB2	1.93	0.49
1:A:154:ILE:CD1	1:A:176:TYR:HB3	2.40	0.49
1:B:479:CYS:SG	1:B:534:TYR:CD1	3.06	0.49
1:A:260:CYS:SG	1:A:267:CYS:C	2.91	0.49
1:A:542:LEU:H	1:A:564:ASN:HD21	1.60	0.48
1:A:777:THR:HG23	1:A:778:CYS:HB2	1.96	0.48
1:B:33:SER:OG	1:B:36:CYS:O	2.31	0.48
1:A:784:ARG:NH1	1:A:814:ILE:O	2.44	0.48
1:A:187:CYS:SG	1:A:189:LYS:C	2.92	0.48
1:B:780:ILE:HG23	1:B:783:PHE:HB3	1.95	0.47
1:A:300:ARG:HH11	1:A:300:ARG:CG	2.26	0.47
1:B:401:LEU:HB2	1:B:425:LEU:HD23	1.96	0.47

Continued on next page...

Continued from previous page...

Atom-1	Atom-2	Interatomic distance (Å)	Clash overlap (Å)
1:B:647:SER:HB3	1:B:672:ASN:OD1	2.14	0.47
1:A:376:GLY:HA2	1:A:403:ILE:O	2.14	0.47
1:A:186:VAL:HG13	1:A:186:VAL:O	2.15	0.47
1:A:258:PRO:CG	1:A:260:CYS:SG	3.02	0.47
1:A:668:GLU:HG2	1:A:692:LEU:HB3	1.97	0.47
1:B:420:LEU:HD13	1:B:423:ILE:HG12	1.96	0.47
1:B:729:SER:HA	1:B:755:ALA:HA	1.96	0.47
1:A:152:SER:OG	1:A:154:ILE:HD12	2.14	0.47
1:B:154:ILE:HD11	1:B:176:TYR:HB3	1.97	0.46
1:A:520:VAL:HG21	1:B:261:PHE:CD1	2.50	0.46
1:A:143:GLY:HA2	1:A:168:ARG:HH11	1.80	0.46
1:B:300:ARG:HH11	1:B:300:ARG:CG	2.29	0.46
1:B:634:ILE:HD12	1:B:635:PHE:CE2	2.51	0.46
1:A:361:ARG:HH12	1:A:388:GLN:HB3	1.80	0.46
1:A:467:PHE:HB2	2:C:1:NAG:H81	1.98	0.46
1:A:361:ARG:NH1	1:A:388:GLN:HB3	2.31	0.46
1:A:388:GLN:N	1:A:389:PRO:CD	2.79	0.46
1:B:741:LEU:HD21	1:B:743:LEU:HD11	1.97	0.46
1:B:281:PHE:O	1:B:283:PHE:N	2.49	0.45
1:B:772:ASN:HB2	1:B:774:PHE:CE2	2.51	0.45
1:A:403:ILE:O	1:A:403:ILE:CG2	2.58	0.45
1:B:733:SER:N	1:B:734:GLU:HA	2.31	0.45
1:B:780:ILE:HG12	1:B:783:PHE:H	1.81	0.45
1:A:302:ILE:HD11	1:A:323:LEU:HD13	1.98	0.45
1:B:261:PHE:CD2	1:B:261:PHE:O	2.70	0.45
1:B:742:ASP:HA	1:B:768:GLU:HB2	1.98	0.45
1:A:375:ARG:HD2	1:A:400:ASN:HD21	1.82	0.45
1:B:178:ALA:HA	1:B:209:SER:O	2.17	0.45
1:B:185:LYS:CB	1:B:186:VAL:HB	2.39	0.45
1:B:432:PRO:HD3	1:B:492:SER:O	2.16	0.45
1:B:707:LEU:HB3	1:B:735:VAL:HG22	1.99	0.45
1:A:526:PHE:HB3	1:A:553:LEU:HD21	1.99	0.45
1:B:182:TYR:N	1:B:182:TYR:CD1	2.84	0.45
1:B:783:PHE:CE2	1:B:787:MET:SD	3.10	0.45
1:A:329:SER:O	1:A:360:SER:HB2	2.16	0.45
1:B:205:LEU:C	1:B:205:LEU:HD23	2.37	0.45
1:A:118:ASP:OD2	1:A:119:GLY:N	2.50	0.45
1:A:467:PHE:CB	2:C:1:NAG:H81	2.47	0.45
1:A:536:ASP:C	1:A:536:ASP:OD1	2.55	0.45
1:A:772:ASN:HB2	1:A:774:PHE:CE2	2.52	0.44
1:B:530:PRO:HA	1:B:553:LEU:HD23	1.99	0.44

Continued on next page...

Continued from previous page...

Atom-1	Atom-2	Interatomic distance (Å)	Clash overlap (Å)
1:B:641:LEU:HD23	1:B:663:PRO:HG2	1.99	0.44
1:A:192:ILE:O	1:A:193:GLU:C	2.55	0.44
1:B:620:LEU:HD23	1:B:620:LEU:HA	1.90	0.44
1:B:780:ILE:HG12	1:B:782:ASP:N	2.33	0.44
1:A:212:SER:HB3	1:A:233:GLN:OE1	2.18	0.44
1:B:54:LEU:HD13	1:B:58:PRO:HG3	1.99	0.44
1:B:324:VAL:HG11	1:B:349:ILE:HD11	1.99	0.44
1:B:501:PHE:HA	1:B:504:LEU:HD22	1.99	0.44
1:B:807:GLY:HA2	1:B:808:ASP:C	2.38	0.44
1:B:49:CYS:HB3	1:B:70:LEU:HD23	2.00	0.44
1:B:620:LEU:HD11	1:B:646:LEU:HD22	2.00	0.43
1:B:647:SER:HA	1:B:672:ASN:O	2.18	0.43
1:A:121:PHE:O	1:A:122:LEU:C	2.56	0.43
1:B:54:LEU:CD1	1:B:58:PRO:HG3	2.48	0.43
1:B:97:ASN:HA	1:B:98:PRO:HA	1.74	0.43
1:B:388:GLN:N	1:B:389:PRO:CD	2.82	0.43
1:A:363:PHE:O	1:A:366:LEU:HB2	2.19	0.43
1:B:575:HIS:CE1	1:B:596:ILE:HG12	2.54	0.43
1:B:260:CYS:O	1:B:263:ALA:N	2.51	0.43
1:B:80:ASN:OD1	1:B:80:ASN:C	2.56	0.43
1:B:422:ILE:O	1:B:422:ILE:HG22	2.18	0.43
1:A:45:VAL:HG11	1:A:64:TYR:HB3	2.01	0.43
1:A:117:THR:O	1:A:118:ASP:C	2.57	0.43
1:A:517:ASN:OD1	1:A:542:LEU:HD21	2.19	0.43
1:A:413:LEU:HD12	1:A:414:PHE:N	2.34	0.43
1:B:182:TYR:CD2	1:B:183:PHE:CE1	3.07	0.43
1:A:364:SER:HA	1:A:393:LEU:HD21	2.01	0.43
1:A:314:LYS:C	1:A:339:LEU:HD12	2.39	0.42
1:B:294:LEU:HB2	1:B:318:LEU:HD23	2.00	0.42
1:A:802:ILE:HG22	1:A:803:CYS:O	2.18	0.42
1:B:232:THR:O	1:B:233:GLN:HB2	2.19	0.42
1:B:394:PRO:O	1:B:419:ASN:ND2	2.45	0.42
1:B:767:LEU:O	1:B:796:PRO:HD2	2.19	0.42
1:A:96:HIS:HD2	1:A:134:ASP:OD2	2.02	0.42
1:A:530:PRO:HG2	1:A:531:HIS:CD2	2.55	0.42
1:B:704:THR:CA	1:B:705:ASP:HB3	2.37	0.42
1:B:249:THR:HA	1:B:289:LEU:HA	2.02	0.42
1:A:682:THR:HA	1:A:710:PHE:CD1	2.54	0.42
1:B:703:LEU:HD12	1:B:731:PHE:HE1	1.80	0.42
1:B:805:SER:HA	1:B:806:PRO:HA	1.76	0.42
1:B:152:SER:OG	1:B:154:ILE:HG13	2.20	0.42

Continued on next page...

Continued from previous page...

Atom-1	Atom-2	Interatomic distance (Å)	Clash overlap (Å)
1:B:179:TRP:HB3	1:B:182:TYR:OH	2.18	0.42
1:B:295:SER:HA	1:B:319:GLU:O	2.19	0.42
1:A:620:LEU:CD1	1:A:646:LEU:HD22	2.48	0.42
1:A:772:ASN:O	1:A:774:PHE:CD2	2.72	0.42
1:A:373:HIS:HA	1:A:400:ASN:HB3	2.02	0.42
1:A:388:GLN:N	1:A:389:PRO:HD2	2.35	0.42
1:B:49:CYS:HA	1:B:52:ARG:HE	1.85	0.42
1:B:540:ASN:O	1:B:564:ASN:ND2	2.53	0.42
1:A:234:ILE:O	1:A:256:ASN:HB3	2.19	0.41
1:A:620:LEU:HA	1:A:623:LEU:HD12	2.01	0.41
1:B:751:ILE:O	1:B:780:ILE:CD1	2.39	0.41
1:A:186:VAL:O	1:A:186:VAL:CG1	2.68	0.41
1:B:803:CYS:O	1:B:810:ARG:HA	2.21	0.41
1:B:153:LEU:HB2	1:B:177:LEU:HD23	2.03	0.41
1:B:602:LYS:HD3	1:B:604:ASN:O	2.20	0.41
1:B:703:LEU:HD23	1:B:703:LEU:N	2.35	0.41
1:B:797:ARG:NH1	1:B:800:ASP:OD2	2.53	0.41
1:A:541:ARG:HA	1:A:565:SER:O	2.19	0.41
1:B:327:ILE:HG12	1:B:344:LEU:HD13	2.02	0.41
1:A:475:ILE:HD13	1:A:485:ALA:HB1	2.02	0.41
1:A:805:SER:HA	1:A:806:PRO:C	2.41	0.41
1:B:696:ARG:HG2	1:B:720:SER:HB2	2.03	0.41
1:B:707:LEU:HD23	1:B:735:VAL:HG11	2.02	0.41
1:A:479:CYS:HA	1:A:534:TYR:CD2	2.56	0.40
1:B:332:PHE:CE2	1:B:333:LEU:HD23	2.56	0.40
1:B:732:LEU:N	1:B:732:LEU:CD1	2.83	0.40
1:B:288:GLN:O	1:B:290:ARG:NH1	2.55	0.40
1:B:662:LEU:O	1:B:663:PRO:C	2.59	0.40
1:B:780:ILE:CG2	1:B:783:PHE:HB3	2.52	0.40
1:A:52:ARG:HG2	1:A:799:VAL:HG21	2.03	0.40
1:A:352:SER:OG	1:A:354:PRO:HD3	2.21	0.40
1:A:494:PHE:O	1:A:517:ASN:HA	2.21	0.40
1:B:207:SER:HA	1:B:228:PHE:HB2	2.03	0.40
1:B:479:CYS:SG	1:B:534:TYR:CG	3.15	0.40

There are no symmetry-related clashes.

5.3 Torsion angles [i](#)

5.3.1 Protein backbone [i](#)

In the following table, the Percentiles column shows the percent Ramachandran outliers of the chain as a percentile score with respect to all X-ray entries followed by that with respect to entries of similar resolution.

The Analysed column shows the number of residues for which the backbone conformation was analysed, and the total number of residues.

Mol	Chain	Analysed	Favoured	Allowed	Outliers	Percentiles	
1	A	735/811 (91%)	653 (89%)	74 (10%)	8 (1%)	12	37
1	B	726/811 (90%)	648 (89%)	67 (9%)	11 (2%)	8	29
All	All	1461/1622 (90%)	1301 (89%)	141 (10%)	19 (1%)	10	33

All (19) Ramachandran outliers are listed below:

Mol	Chain	Res	Type
1	B	282	ALA
1	A	186	VAL
1	A	571	ALA
1	B	279	ASP
1	B	705	ASP
1	B	729	SER
1	B	736	SER
1	A	118	ASP
1	A	378	VAL
1	A	799	VAL
1	B	186	VAL
1	B	378	VAL
1	B	721	HIS
1	A	214	SER
1	A	672	ASN
1	B	65	VAL
1	B	810	ARG
1	B	601	ASP
1	A	422	ILE

5.3.2 Protein sidechains [i](#)

In the following table, the Percentiles column shows the percent sidechain outliers of the chain as a percentile score with respect to all X-ray entries followed by that with respect to entries of similar resolution.

The Analysed column shows the number of residues for which the sidechain conformation was analysed, and the total number of residues.

Mol	Chain	Analysed	Rotameric	Outliers	Percentiles	
1	A	689/755 (91%)	643 (93%)	46 (7%)	13	39
1	B	685/755 (91%)	630 (92%)	55 (8%)	10	30
All	All	1374/1510 (91%)	1273 (93%)	101 (7%)	11	34

All (101) residues with a non-rotameric sidechain are listed below:

Mol	Chain	Res	Type
1	A	40	LYS
1	A	45	VAL
1	A	49	CYS
1	A	87	GLN
1	A	122	LEU
1	A	167	SER
1	A	168	ARG
1	A	185	LYS
1	A	187	CYS
1	A	235	LYS
1	A	238	SER
1	A	248	LEU
1	A	266	PRO
1	A	286	LEU
1	A	300	ARG
1	A	301	LYS
1	A	317	ASP
1	A	350	LYS
1	A	366	LEU
1	A	367	LEU
1	A	388	GLN
1	A	397	SER
1	A	478	GLN
1	A	509	CYS
1	A	548	SER
1	A	554	SER
1	A	569	ARG
1	A	574	THR
1	A	578	GLU
1	A	581	GLN
1	A	584	THR
1	A	587	LYS
1	A	598	THR

Continued on next page...

Continued from previous page...

Mol	Chain	Res	Type
1	A	599	LEU
1	A	601	ASP
1	A	605	LEU
1	A	628	ASP
1	A	630	ARG
1	A	634	ILE
1	A	677	LYS
1	A	753	LYS
1	A	762	THR
1	A	776	CYS
1	A	797	ARG
1	A	798	LEU
1	A	808	ASP
1	B	43	ASP
1	B	49	CYS
1	B	50	SER
1	B	67	GLU
1	B	68	LEU
1	B	81	GLU
1	B	118	ASP
1	B	122	LEU
1	B	139	GLN
1	B	154	ILE
1	B	167	SER
1	B	182	TYR
1	B	200	LEU
1	B	232	THR
1	B	243	LYS
1	B	248	LEU
1	B	261	PHE
1	B	271	ASP
1	B	300	ARG
1	B	301	LYS
1	B	361	ARG
1	B	366	LEU
1	B	367	LEU
1	B	436	ASP
1	B	437	THR
1	B	465	SER
1	B	478	GLN
1	B	502	GLU
1	B	504	LEU

Continued on next page...

Continued from previous page...

Mol	Chain	Res	Type
1	B	543	ASP
1	B	564	ASN
1	B	581	GLN
1	B	585	ASN
1	B	587	LYS
1	B	602	LYS
1	B	630	ARG
1	B	634	ILE
1	B	665	SER
1	B	671	ILE
1	B	677	LYS
1	B	689	ARG
1	B	702	PHE
1	B	703	LEU
1	B	705	ASP
1	B	708	SER
1	B	731	PHE
1	B	732	LEU
1	B	734	GLU
1	B	739	LYS
1	B	753	LYS
1	B	762	THR
1	B	782	ASP
1	B	797	ARG
1	B	798	LEU
1	B	817	LEU

Sometimes sidechains can be flipped to improve hydrogen bonding and reduce clashes. All (19) such sidechains are listed below:

Mol	Chain	Res	Type
1	A	96	HIS
1	A	99	ASN
1	A	184	ASN
1	A	285	ASN
1	A	388	GLN
1	A	408	GLN
1	A	478	GLN
1	A	564	ASN
1	A	604	ASN
1	A	653	HIS
1	A	752	ASN
1	B	135	ASN

Continued on next page...

Continued from previous page...

Mol	Chain	Res	Type
1	B	233	GLN
1	B	277	ASN
1	B	285	ASN
1	B	478	GLN
1	B	604	ASN
1	B	661	ASN
1	B	726	HIS

5.3.3 RNA [i](#)

There are no RNA molecules in this entry.

5.4 Non-standard residues in protein, DNA, RNA chains [i](#)

22 non-standard protein/DNA/RNA residues are modelled in this entry.

In the following table, the Counts columns list the number of bonds (or angles) for which Mogul statistics could be retrieved, the number of bonds (or angles) that are observed in the model and the number of bonds (or angles) that are defined in the Chemical Component Dictionary. The Link column lists molecule types, if any, to which the group is linked. The Z score for a bond length (or angle) is the number of standard deviations the observed value is removed from the expected value. A bond length (or angle) with $|Z| > 2$ is considered an outlier worth inspection. RMSZ is the root-mean-square of all Z scores of the bond lengths (or angles).

Mol	Type	Chain	Res	Link	Bond lengths			Bond angles		
					Counts	RMSZ	# Z > 2	Counts	RMSZ	# Z > 2
5	MAN	H	4	5	11,11,12	0.55	0	15,15,17	1.39	2 (13%)
3	NAG	G	1	1,3	14,14,15	0.77	0	17,19,21	1.83	3 (17%)
8	NAG	A	916	1	14,14,15	0.56	0	17,19,21	1.17	2 (11%)
4	NAG	E	1	1,4	14,14,15	1.10	2 (14%)	17,19,21	1.73	4 (23%)
8	NAG	A	915	1	14,14,15	0.60	0	17,19,21	1.36	1 (5%)
3	NAG	D	1	1,3	14,14,15	0.92	1 (7%)	17,19,21	1.19	1 (5%)
5	NAG	H	1	1,5	14,14,15	0.73	0	17,19,21	1.31	2 (11%)
5	NAG	F	2	5	14,14,15	0.50	0	17,19,21	1.45	4 (23%)
4	MAN	E	5	4	11,11,12	0.61	0	15,15,17	0.99	1 (6%)
4	MAN	E	4	4	11,11,12	0.95	1 (9%)	15,15,17	1.73	4 (26%)
4	NAG	E	2	4	14,14,15	0.83	0	17,19,21	1.33	2 (11%)
8	NAG	B	911	1	14,14,15	0.67	0	17,19,21	1.26	2 (11%)
7	MAN	A	906	-	11,11,12	0.54	0	15,15,17	2.82	3 (20%)

Mol	Type	Chain	Res	Link	Bond lengths			Bond angles		
					Counts	RMSZ	# Z > 2	Counts	RMSZ	# Z > 2
5	NAG	F	1	1,5	14,14,15	0.84	1 (7%)	17,19,21	1.48	4 (23%)
2	NAG	C	2	2	14,14,15	0.53	0	17,19,21	1.67	5 (29%)
8	NAG	A	907	1	14,14,15	0.61	0	17,19,21	1.81	6 (35%)
2	MAN	C	4	2	11,11,12	0.78	0	15,15,17	1.80	4 (26%)
5	NAG	H	2	5	14,14,15	1.10	1 (7%)	17,19,21	1.38	2 (11%)
2	NAG	C	1	1,2	14,14,15	0.60	0	17,19,21	1.46	2 (11%)
5	MAN	F	4	5	11,11,12	0.97	1 (9%)	15,15,17	2.64	3 (20%)
3	NAG	G	2	3	14,14,15	0.54	0	17,19,21	1.25	1 (5%)
3	NAG	D	2	3	14,14,15	0.84	1 (7%)	17,19,21	1.62	5 (29%)

In the following table, the Chirals column lists the number of chiral outliers, the number of chiral centers analysed, the number of these observed in the model and the number defined in the Chemical Component Dictionary. Similar counts are reported in the Torsion and Rings columns. '-' means no outliers of that kind were identified.

Mol	Type	Chain	Res	Link	Chirals	Torsions	Rings
5	MAN	H	4	5	-	1/2/19/22	0/1/1/1
3	NAG	G	1	1,3	-	0/6/23/26	0/1/1/1
8	NAG	A	916	1	-	0/6/23/26	0/1/1/1
4	NAG	E	1	1,4	-	0/6/23/26	0/1/1/1
8	NAG	A	915	1	-	2/6/23/26	0/1/1/1
3	NAG	D	1	1,3	-	0/6/23/26	0/1/1/1
5	NAG	H	1	1,5	-	0/6/23/26	0/1/1/1
5	NAG	F	2	5	-	0/6/23/26	0/1/1/1
4	MAN	E	5	4	-	2/2/19/22	0/1/1/1
4	MAN	E	4	4	-	0/2/19/22	0/1/1/1
4	NAG	E	2	4	-	2/6/23/26	0/1/1/1
8	NAG	B	911	1	-	0/6/23/26	0/1/1/1
7	MAN	A	906	-	-	0/2/19/22	0/1/1/1
5	NAG	F	1	1,5	-	2/6/23/26	0/1/1/1
2	NAG	C	2	2	-	0/6/23/26	0/1/1/1
8	NAG	A	907	1	-	0/6/23/26	0/1/1/1
2	MAN	C	4	2	-	0/2/19/22	0/1/1/1
5	NAG	H	2	5	-	0/6/23/26	0/1/1/1
2	NAG	C	1	1,2	-	0/6/23/26	0/1/1/1
5	MAN	F	4	5	-	2/2/19/22	0/1/1/1
3	NAG	G	2	3	-	2/6/23/26	0/1/1/1
3	NAG	D	2	3	-	2/6/23/26	0/1/1/1

All (8) bond length outliers are listed below:

Mol	Chain	Res	Type	Atoms	Z	Observed(Å)	Ideal(Å)
3	D	1	NAG	O5-C1	-2.91	1.39	1.43
5	H	2	NAG	O5-C1	-2.73	1.39	1.43
4	E	4	MAN	C2-C3	2.31	1.55	1.52
5	F	1	NAG	O5-C1	-2.09	1.40	1.43
4	E	1	NAG	O5-C1	-2.08	1.40	1.43
5	F	4	MAN	C1-C2	2.05	1.56	1.52
3	D	2	NAG	O5-C1	-2.04	1.40	1.43
4	E	1	NAG	O5-C5	-2.02	1.39	1.43

All (63) bond angle outliers are listed below:

Mol	Chain	Res	Type	Atoms	Z	Observed(°)	Ideal(°)
7	A	906	MAN	C1-O5-C5	7.74	122.68	112.19
5	F	4	MAN	C1-O5-C5	6.80	121.41	112.19
5	F	4	MAN	C1-C2-C3	6.09	117.16	109.67
7	A	906	MAN	O5-C1-C2	5.32	118.98	110.77
4	E	1	NAG	O5-C1-C2	-5.14	103.17	111.29
3	G	1	NAG	O7-C7-C8	-4.96	112.84	122.06
8	A	907	NAG	C1-O5-C5	4.75	118.62	112.19
7	A	906	MAN	C1-C2-C3	4.69	115.44	109.67
3	G	1	NAG	O7-C7-N2	4.11	129.51	121.95
5	F	1	NAG	O5-C1-C2	-3.66	105.50	111.29
3	G	2	NAG	O5-C5-C6	3.60	112.85	107.20
8	A	915	NAG	O5-C1-C2	-3.35	106.00	111.29
2	C	4	MAN	O2-C2-C1	3.33	115.97	109.15
4	E	4	MAN	O2-C2-C3	3.33	116.80	110.14
2	C	4	MAN	C2-C3-C4	3.23	116.49	110.89
3	D	2	NAG	O7-C7-C8	-3.16	116.19	122.06
5	H	4	MAN	O5-C5-C6	3.15	112.14	107.20
2	C	1	NAG	O5-C1-C2	-3.14	106.33	111.29
4	E	4	MAN	C2-C3-C4	3.14	116.32	110.89
5	H	2	NAG	O5-C1-C2	-3.13	106.35	111.29
3	D	1	NAG	O7-C7-C8	-3.10	116.29	122.06
2	C	4	MAN	C3-C4-C5	3.04	115.66	110.24
2	C	2	NAG	O7-C7-C8	-3.02	116.46	122.06
8	B	911	NAG	O5-C1-C2	-2.97	106.61	111.29
2	C	2	NAG	O5-C1-C2	-2.91	106.70	111.29
2	C	1	NAG	C1-C2-N2	2.90	115.44	110.49
4	E	2	NAG	O7-C7-C8	-2.81	116.85	122.06
4	E	1	NAG	C1-C2-N2	-2.68	105.90	110.49
5	F	2	NAG	C1-C2-N2	2.68	115.06	110.49
8	A	907	NAG	O5-C5-C6	2.66	111.37	107.20

Continued on next page...

Continued from previous page...

Mol	Chain	Res	Type	Atoms	Z	Observed(°)	Ideal(°)
4	E	2	NAG	O5-C5-C6	2.65	111.35	107.20
5	F	2	NAG	O7-C7-C8	-2.65	117.14	122.06
4	E	5	MAN	O5-C5-C6	2.63	111.33	107.20
3	D	2	NAG	C4-C3-C2	2.61	114.84	111.02
3	G	1	NAG	O3-C3-C2	-2.60	104.08	109.47
5	H	2	NAG	O6-C6-C5	-2.59	102.39	111.29
5	H	4	MAN	O5-C1-C2	-2.59	106.77	110.77
2	C	2	NAG	C1-C2-N2	2.59	114.91	110.49
8	A	916	NAG	C1-O5-C5	2.56	115.66	112.19
5	F	2	NAG	O5-C1-C2	-2.54	107.27	111.29
4	E	4	MAN	C1-C2-C3	2.51	112.75	109.67
3	D	2	NAG	O7-C7-N2	2.50	126.55	121.95
5	F	4	MAN	O5-C1-C2	2.37	114.43	110.77
8	A	907	NAG	O5-C5-C4	-2.37	105.07	110.83
2	C	4	MAN	C1-C2-C3	2.35	112.56	109.67
8	B	911	NAG	O3-C3-C2	2.35	114.33	109.47
3	D	2	NAG	C1-C2-N2	2.32	114.45	110.49
2	C	2	NAG	C4-C3-C2	2.28	114.36	111.02
2	C	2	NAG	C1-O5-C5	-2.23	109.18	112.19
4	E	1	NAG	O3-C3-C2	-2.22	104.87	109.47
8	A	907	NAG	C1-C2-N2	-2.20	106.73	110.49
5	F	1	NAG	O7-C7-C8	-2.11	118.14	122.06
3	D	2	NAG	O4-C4-C5	2.10	114.50	109.30
5	F	1	NAG	O3-C3-C4	-2.09	105.52	110.35
5	F	2	NAG	O5-C5-C6	2.09	110.48	107.20
8	A	907	NAG	C3-C4-C5	-2.09	106.51	110.24
4	E	4	MAN	C3-C4-C5	2.08	113.94	110.24
5	H	1	NAG	O6-C6-C5	-2.07	104.20	111.29
4	E	1	NAG	O5-C5-C4	-2.06	105.81	110.83
5	F	1	NAG	O4-C4-C3	-2.05	105.61	110.35
8	A	907	NAG	O7-C7-N2	2.03	125.69	121.95
8	A	916	NAG	O3-C3-C4	-2.03	105.65	110.35
5	H	1	NAG	C3-C4-C5	-2.01	106.65	110.24

There are no chirality outliers.

All (15) torsion outliers are listed below:

Mol	Chain	Res	Type	Atoms
5	F	1	NAG	C4-C5-C6-O6
5	F	1	NAG	O5-C5-C6-O6
5	F	4	MAN	O5-C5-C6-O6
5	F	4	MAN	C4-C5-C6-O6

Continued on next page...

Continued from previous page...

Mol	Chain	Res	Type	Atoms
3	G	2	NAG	O5-C5-C6-O6
4	E	2	NAG	O5-C5-C6-O6
3	G	2	NAG	C4-C5-C6-O6
3	D	2	NAG	O5-C5-C6-O6
3	D	2	NAG	C4-C5-C6-O6
4	E	2	NAG	C4-C5-C6-O6
4	E	5	MAN	C4-C5-C6-O6
5	H	4	MAN	O5-C5-C6-O6
4	E	5	MAN	O5-C5-C6-O6
8	A	915	NAG	C4-C5-C6-O6
8	A	915	NAG	O5-C5-C6-O6

There are no ring outliers.

3 monomers are involved in 5 short contacts:

Mol	Chain	Res	Type	Clashes	Symm-Clashes
4	E	1	NAG	2	0
8	B	911	NAG	1	0
2	C	1	NAG	2	0

5.5 Carbohydrates [i](#)

21 monosaccharides are modelled in this entry.

In the following table, the Counts columns list the number of bonds (or angles) for which Mogul statistics could be retrieved, the number of bonds (or angles) that are observed in the model and the number of bonds (or angles) that are defined in the Chemical Component Dictionary. The Link column lists molecule types, if any, to which the group is linked. The Z score for a bond length (or angle) is the number of standard deviations the observed value is removed from the expected value. A bond length (or angle) with $|Z| > 2$ is considered an outlier worth inspection. RMSZ is the root-mean-square of all Z scores of the bond lengths (or angles).

Mol	Type	Chain	Res	Link	Bond lengths			Bond angles		
					Counts	RMSZ	# Z > 2	Counts	RMSZ	# Z > 2
2	NAG	C	1	1,2	14,14,15	0.60	0	17,19,21	1.46	2 (11%)
2	NAG	C	2	2	14,14,15	0.53	0	17,19,21	1.67	5 (29%)
2	BMA	C	3	2	11,11,12	0.50	0	15,15,17	1.29	3 (20%)
2	MAN	C	4	2	11,11,12	0.78	0	15,15,17	1.80	4 (26%)
3	NAG	D	1	1,3	14,14,15	0.92	1 (7%)	17,19,21	1.19	1 (5%)
3	NAG	D	2	3	14,14,15	0.84	1 (7%)	17,19,21	1.62	5 (29%)
4	NAG	E	1	1,4	14,14,15	1.10	2 (14%)	17,19,21	1.73	4 (23%)

Mol	Type	Chain	Res	Link	Bond lengths			Bond angles		
					Counts	RMSZ	# Z > 2	Counts	RMSZ	# Z > 2
4	NAG	E	2	4	14,14,15	0.83	0	17,19,21	1.33	2 (11%)
4	BMA	E	3	4	11,11,12	0.60	0	15,15,17	0.93	0
4	MAN	E	4	4	11,11,12	0.95	1 (9%)	15,15,17	1.73	4 (26%)
4	MAN	E	5	4	11,11,12	0.61	0	15,15,17	0.99	1 (6%)
5	NAG	F	1	1,5	14,14,15	0.84	1 (7%)	17,19,21	1.48	4 (23%)
5	NAG	F	2	5	14,14,15	0.50	0	17,19,21	1.45	4 (23%)
5	BMA	F	3	5	11,11,12	0.81	0	15,15,17	1.94	5 (33%)
5	MAN	F	4	5	11,11,12	0.97	1 (9%)	15,15,17	2.64	3 (20%)
3	NAG	G	1	1,3	14,14,15	0.77	0	17,19,21	1.83	3 (17%)
3	NAG	G	2	3	14,14,15	0.54	0	17,19,21	1.25	1 (5%)
5	NAG	H	1	1,5	14,14,15	0.73	0	17,19,21	1.31	2 (11%)
5	NAG	H	2	5	14,14,15	1.10	1 (7%)	17,19,21	1.38	2 (11%)
5	BMA	H	3	5	11,11,12	0.41	0	15,15,17	1.38	4 (26%)
5	MAN	H	4	5	11,11,12	0.55	0	15,15,17	1.39	2 (13%)

In the following table, the Chirals column lists the number of chiral outliers, the number of chiral centers analysed, the number of these observed in the model and the number defined in the Chemical Component Dictionary. Similar counts are reported in the Torsion and Rings columns. '-' means no outliers of that kind were identified.

Mol	Type	Chain	Res	Link	Chirals	Torsions	Rings
2	NAG	C	1	1,2	-	0/6/23/26	0/1/1/1
2	NAG	C	2	2	-	0/6/23/26	0/1/1/1
2	BMA	C	3	2	-	2/2/19/22	0/1/1/1
2	MAN	C	4	2	-	0/2/19/22	0/1/1/1
3	NAG	D	1	1,3	-	0/6/23/26	0/1/1/1
3	NAG	D	2	3	-	2/6/23/26	0/1/1/1
4	NAG	E	1	1,4	-	0/6/23/26	0/1/1/1
4	NAG	E	2	4	-	2/6/23/26	0/1/1/1
4	BMA	E	3	4	-	1/2/19/22	0/1/1/1
4	MAN	E	4	4	-	0/2/19/22	0/1/1/1
4	MAN	E	5	4	-	2/2/19/22	0/1/1/1
5	NAG	F	1	1,5	-	2/6/23/26	0/1/1/1
5	NAG	F	2	5	-	0/6/23/26	0/1/1/1
5	BMA	F	3	5	-	1/2/19/22	0/1/1/1
5	MAN	F	4	5	-	2/2/19/22	0/1/1/1
3	NAG	G	1	1,3	-	0/6/23/26	0/1/1/1
3	NAG	G	2	3	-	2/6/23/26	0/1/1/1

Continued on next page...

Continued from previous page...

Mol	Type	Chain	Res	Link	Chirals	Torsions	Rings
5	NAG	H	1	1,5	-	0/6/23/26	0/1/1/1
5	NAG	H	2	5	-	0/6/23/26	0/1/1/1
5	BMA	H	3	5	-	2/2/19/22	0/1/1/1
5	MAN	H	4	5	-	1/2/19/22	0/1/1/1

All (8) bond length outliers are listed below:

Mol	Chain	Res	Type	Atoms	Z	Observed(Å)	Ideal(Å)
3	D	1	NAG	O5-C1	-2.91	1.39	1.43
5	H	2	NAG	O5-C1	-2.73	1.39	1.43
4	E	4	MAN	C2-C3	2.31	1.55	1.52
5	F	1	NAG	O5-C1	-2.09	1.40	1.43
4	E	1	NAG	O5-C1	-2.08	1.40	1.43
5	F	4	MAN	C1-C2	2.05	1.56	1.52
3	D	2	NAG	O5-C1	-2.04	1.40	1.43
4	E	1	NAG	O5-C5	-2.02	1.39	1.43

All (61) bond angle outliers are listed below:

Mol	Chain	Res	Type	Atoms	Z	Observed(°)	Ideal(°)
5	F	4	MAN	C1-O5-C5	6.80	121.41	112.19
5	F	4	MAN	C1-C2-C3	6.09	117.16	109.67
4	E	1	NAG	O5-C1-C2	-5.14	103.17	111.29
3	G	1	NAG	O7-C7-C8	-4.96	112.84	122.06
3	G	1	NAG	O7-C7-N2	4.11	129.51	121.95
5	F	3	BMA	C3-C4-C5	3.83	117.08	110.24
5	F	3	BMA	O5-C1-C2	-3.82	104.88	110.77
5	F	1	NAG	O5-C1-C2	-3.66	105.50	111.29
3	G	2	NAG	O5-C5-C6	3.60	112.85	107.20
2	C	4	MAN	O2-C2-C1	3.33	115.97	109.15
4	E	4	MAN	O2-C2-C3	3.33	116.80	110.14
2	C	4	MAN	C2-C3-C4	3.23	116.49	110.89
3	D	2	NAG	O7-C7-C8	-3.16	116.19	122.06
5	H	4	MAN	O5-C5-C6	3.15	112.14	107.20
2	C	1	NAG	O5-C1-C2	-3.14	106.33	111.29
4	E	4	MAN	C2-C3-C4	3.14	116.32	110.89
5	H	2	NAG	O5-C1-C2	-3.13	106.35	111.29
3	D	1	NAG	O7-C7-C8	-3.10	116.29	122.06
2	C	4	MAN	C3-C4-C5	3.04	115.66	110.24
2	C	2	NAG	O7-C7-C8	-3.02	116.46	122.06
2	C	2	NAG	O5-C1-C2	-2.91	106.70	111.29
2	C	1	NAG	C1-C2-N2	2.90	115.44	110.49

Continued on next page...

Continued from previous page...

Mol	Chain	Res	Type	Atoms	Z	Observed(°)	Ideal(°)
4	E	2	NAG	O7-C7-C8	-2.81	116.85	122.06
2	C	3	BMA	C1-C2-C3	-2.73	106.31	109.67
4	E	1	NAG	C1-C2-N2	-2.68	105.90	110.49
5	F	2	NAG	C1-C2-N2	2.68	115.06	110.49
2	C	3	BMA	C3-C4-C5	2.66	114.99	110.24
4	E	2	NAG	O5-C5-C6	2.65	111.35	107.20
5	F	2	NAG	O7-C7-C8	-2.65	117.14	122.06
4	E	5	MAN	O5-C5-C6	2.63	111.33	107.20
3	D	2	NAG	C4-C3-C2	2.61	114.84	111.02
3	G	1	NAG	O3-C3-C2	-2.60	104.08	109.47
5	H	2	NAG	O6-C6-C5	-2.59	102.39	111.29
5	H	4	MAN	O5-C1-C2	-2.59	106.77	110.77
2	C	2	NAG	C1-C2-N2	2.59	114.91	110.49
5	F	2	NAG	O5-C1-C2	-2.54	107.27	111.29
4	E	4	MAN	C1-C2-C3	2.51	112.75	109.67
3	D	2	NAG	O7-C7-N2	2.50	126.55	121.95
5	F	3	BMA	C1-O5-C5	2.43	115.49	112.19
5	F	3	BMA	C1-C2-C3	-2.42	106.69	109.67
5	F	4	MAN	O5-C1-C2	2.37	114.43	110.77
2	C	4	MAN	C1-C2-C3	2.35	112.56	109.67
3	D	2	NAG	C1-C2-N2	2.32	114.45	110.49
5	H	3	BMA	C2-C3-C4	-2.29	106.94	110.89
2	C	2	NAG	C4-C3-C2	2.28	114.36	111.02
5	H	3	BMA	O2-C2-C3	2.25	114.64	110.14
2	C	2	NAG	C1-O5-C5	-2.23	109.18	112.19
4	E	1	NAG	O3-C3-C2	-2.22	104.87	109.47
5	H	3	BMA	O5-C5-C6	2.16	110.59	107.20
2	C	3	BMA	O2-C2-C1	2.13	113.50	109.15
5	F	3	BMA	O6-C6-C5	2.11	118.53	111.29
5	F	1	NAG	O7-C7-C8	-2.11	118.14	122.06
5	H	3	BMA	O5-C1-C2	2.10	114.01	110.77
3	D	2	NAG	O4-C4-C5	2.10	114.50	109.30
5	F	1	NAG	O3-C3-C4	-2.09	105.52	110.35
5	F	2	NAG	O5-C5-C6	2.09	110.48	107.20
4	E	4	MAN	C3-C4-C5	2.08	113.94	110.24
5	H	1	NAG	O6-C6-C5	-2.07	104.20	111.29
4	E	1	NAG	O5-C5-C4	-2.06	105.81	110.83
5	F	1	NAG	O4-C4-C3	-2.05	105.61	110.35
5	H	1	NAG	C3-C4-C5	-2.01	106.65	110.24

There are no chirality outliers.

All (19) torsion outliers are listed below:

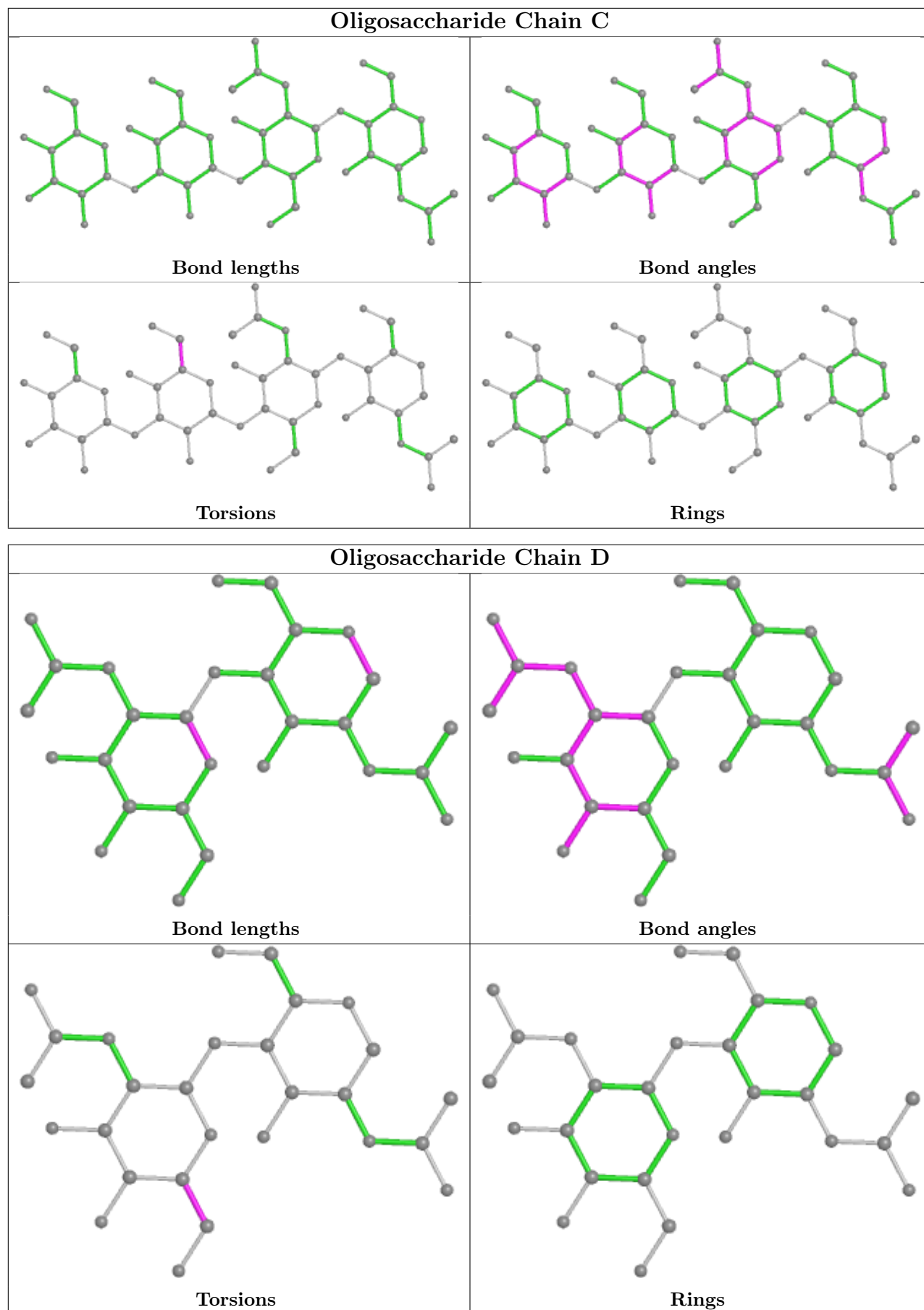
Mol	Chain	Res	Type	Atoms
5	F	1	NAG	C4-C5-C6-O6
5	F	1	NAG	O5-C5-C6-O6
5	H	3	BMA	C4-C5-C6-O6
5	F	4	MAN	O5-C5-C6-O6
5	H	3	BMA	O5-C5-C6-O6
5	F	4	MAN	C4-C5-C6-O6
3	G	2	NAG	O5-C5-C6-O6
4	E	2	NAG	O5-C5-C6-O6
3	G	2	NAG	C4-C5-C6-O6
3	D	2	NAG	O5-C5-C6-O6
3	D	2	NAG	C4-C5-C6-O6
4	E	2	NAG	C4-C5-C6-O6
4	E	5	MAN	C4-C5-C6-O6
5	H	4	MAN	O5-C5-C6-O6
5	F	3	BMA	O5-C5-C6-O6
4	E	5	MAN	O5-C5-C6-O6
2	C	3	BMA	C4-C5-C6-O6
2	C	3	BMA	O5-C5-C6-O6
4	E	3	BMA	O5-C5-C6-O6

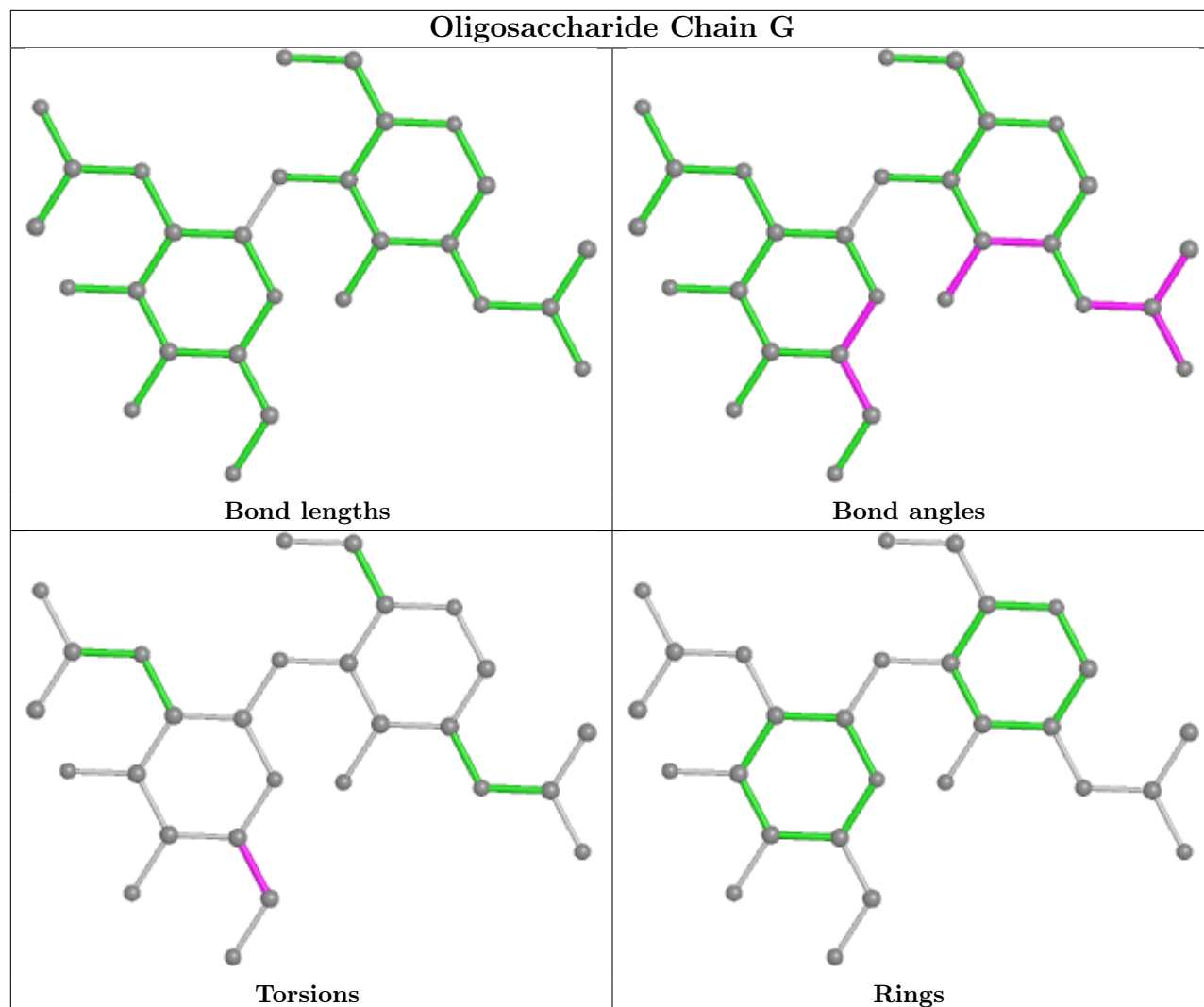
There are no ring outliers.

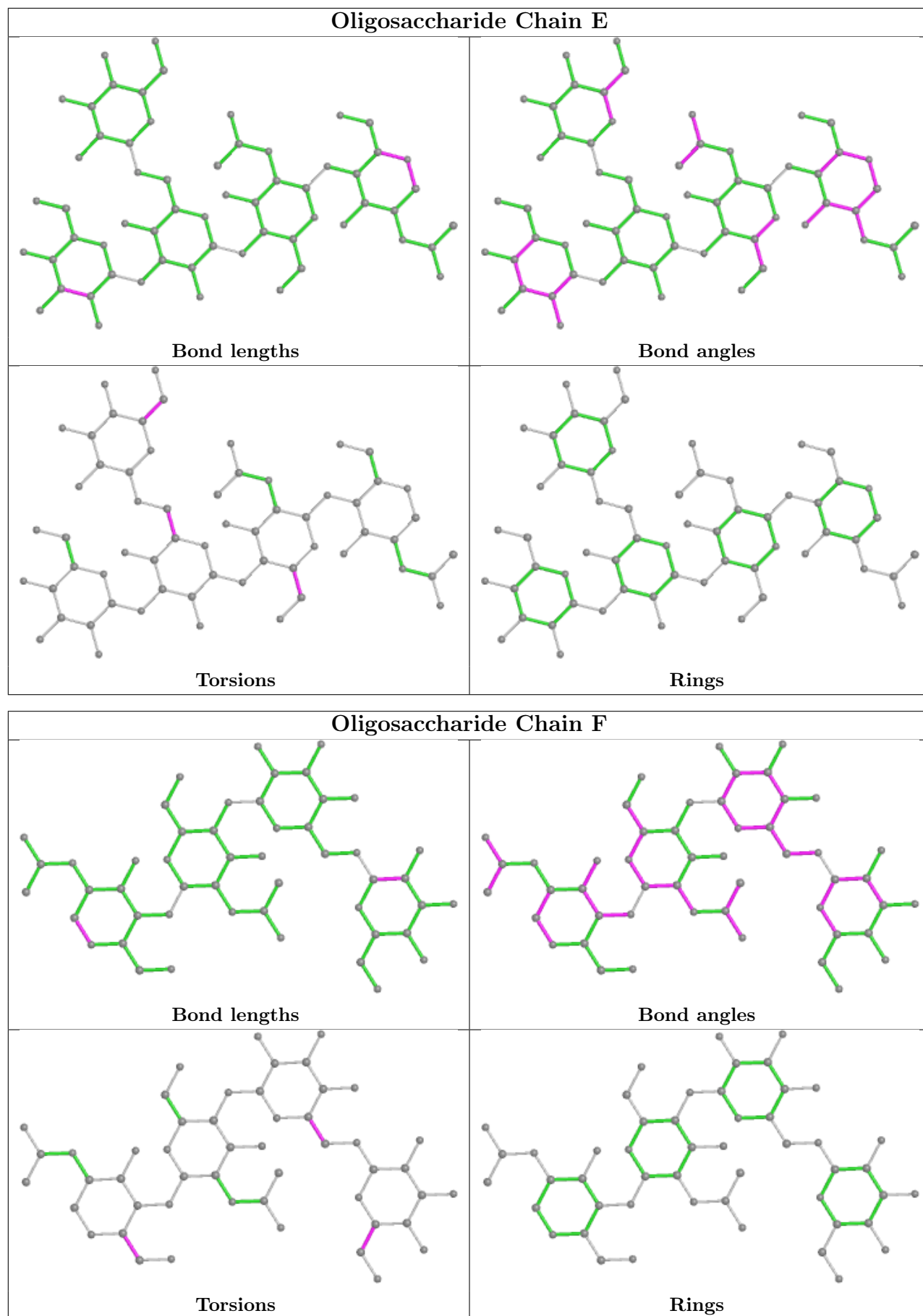
2 monomers are involved in 4 short contacts:

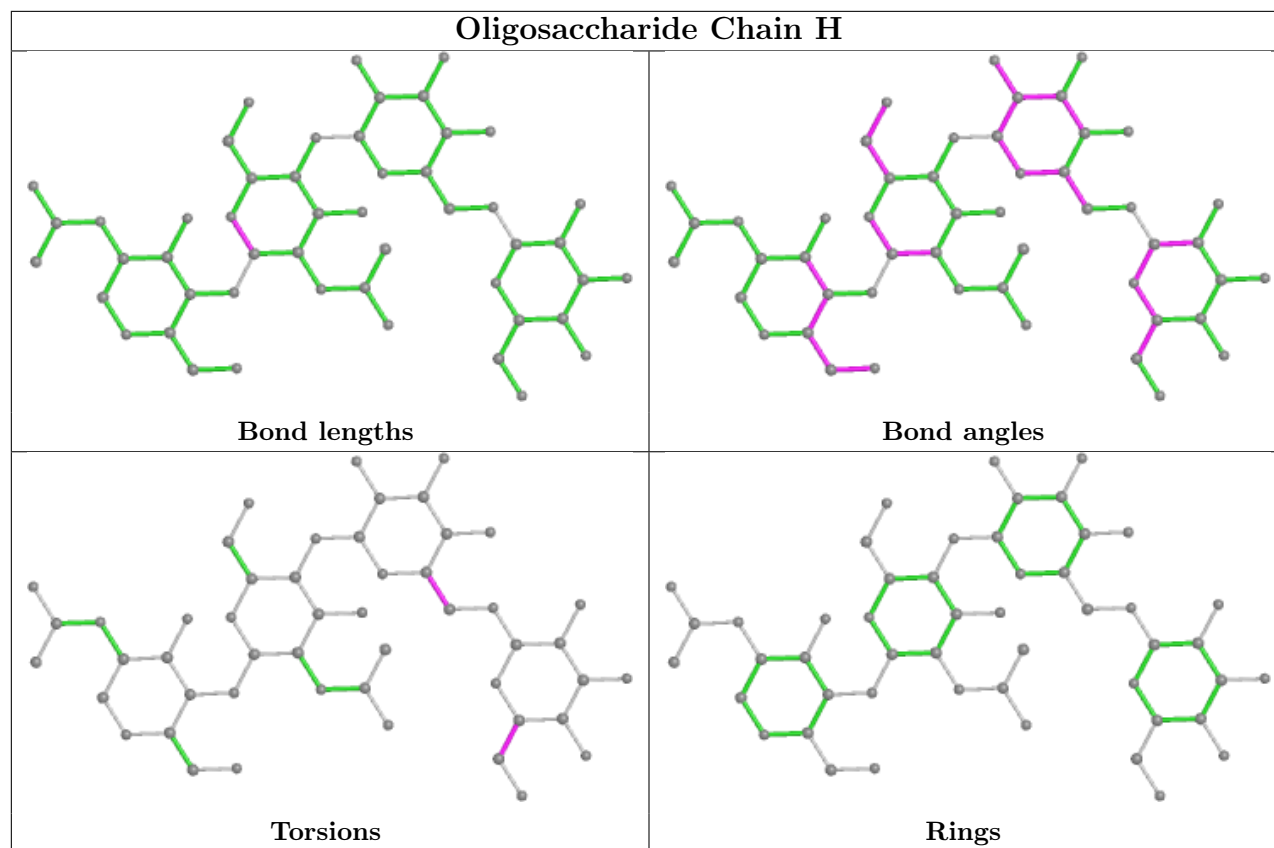
Mol	Chain	Res	Type	Clashes	Symm-Clashes
4	E	1	NAG	2	0
2	C	1	NAG	2	0

The following is a two-dimensional graphical depiction of Mogul quality analysis of bond lengths, bond angles, torsion angles, and ring geometry for oligosaccharide.









5.6 Ligand geometry [i](#)

7 ligands are modelled in this entry.

In the following table, the Counts columns list the number of bonds (or angles) for which Mogul statistics could be retrieved, the number of bonds (or angles) that are observed in the model and the number of bonds (or angles) that are defined in the Chemical Component Dictionary. The Link column lists molecule types, if any, to which the group is linked. The Z score for a bond length (or angle) is the number of standard deviations the observed value is removed from the expected value. A bond length (or angle) with $|Z| > 2$ is considered an outlier worth inspection. RMSZ is the root-mean-square of all Z scores of the bond lengths (or angles).

Mol	Type	Chain	Res	Link	Bond lengths			Bond angles		
					Counts	RMSZ	# $ Z > 2$	Counts	RMSZ	# $ Z > 2$
6	7VL	A	901	-	21,21,21	1.86	4 (19%)	30,30,30	1.67	8 (26%)
8	NAG	B	911	1	14,14,15	0.67	0	17,19,21	1.26	2 (11%)
7	MAN	A	906	-	11,11,12	0.54	0	15,15,17	2.82	3 (20%)
8	NAG	A	916	1	14,14,15	0.56	0	17,19,21	1.17	2 (11%)
8	NAG	A	915	1	14,14,15	0.60	0	17,19,21	1.36	1 (5%)
8	NAG	A	907	1	14,14,15	0.61	0	17,19,21	1.81	6 (35%)
6	7VL	A	917	-	21,21,21	2.09	3 (14%)	30,30,30	1.69	7 (23%)

In the following table, the Chirals column lists the number of chiral outliers, the number of chiral centers analysed, the number of these observed in the model and the number defined in the Chemical Component Dictionary. Similar counts are reported in the Torsion and Rings columns. '-' means no outliers of that kind were identified.

Mol	Type	Chain	Res	Link	Chirals	Torsions	Rings
6	7VL	A	901	-	-	0/4/4/4	0/3/3/3
8	NAG	B	911	1	-	0/6/23/26	0/1/1/1
7	MAN	A	906	-	-	0/2/19/22	0/1/1/1
8	NAG	A	916	1	-	0/6/23/26	0/1/1/1
8	NAG	A	915	1	-	2/6/23/26	0/1/1/1
8	NAG	A	907	1	-	0/6/23/26	0/1/1/1
6	7VL	A	917	-	-	0/4/4/4	0/3/3/3

All (7) bond length outliers are listed below:

Mol	Chain	Res	Type	Atoms	Z	Observed(Å)	Ideal(Å)
6	A	917	7VL	C8-C7	7.30	1.49	1.40
6	A	901	7VL	C8-C7	5.17	1.46	1.40
6	A	917	7VL	C-C1	3.66	1.48	1.42
6	A	901	7VL	C-C1	3.61	1.48	1.42
6	A	901	7VL	C2-C	3.04	1.49	1.42
6	A	901	7VL	C15-CL	2.61	1.80	1.74
6	A	917	7VL	C12-C	-2.22	1.37	1.42

All (29) bond angle outliers are listed below:

Mol	Chain	Res	Type	Atoms	Z	Observed(°)	Ideal(°)
7	A	906	MAN	C1-O5-C5	7.74	122.68	112.19
7	A	906	MAN	O5-C1-C2	5.32	118.98	110.77
8	A	907	NAG	C1-O5-C5	4.75	118.62	112.19
7	A	906	MAN	C1-C2-C3	4.69	115.44	109.67
6	A	901	7VL	C-C1-N	-3.87	118.71	122.83
6	A	917	7VL	C9-C5-C2	-3.63	114.75	120.86
8	A	915	NAG	O5-C1-C2	-3.35	106.00	111.29
6	A	917	7VL	O-C8-C7	3.24	124.37	117.63
6	A	917	7VL	C4-N-C1	3.18	121.85	116.93
6	A	901	7VL	C4-N-C1	3.09	121.72	116.93
8	B	911	NAG	O5-C1-C2	-2.97	106.61	111.29
6	A	901	7VL	C14-C1-N	2.92	121.30	117.97
6	A	917	7VL	C-C1-N	-2.89	119.75	122.83
6	A	901	7VL	C2-C-C1	2.68	118.88	117.44
8	A	907	NAG	O5-C5-C6	2.66	111.37	107.20
6	A	901	7VL	C14-C15-CL	2.59	122.88	119.64

Continued on next page...

Continued from previous page...

Mol	Chain	Res	Type	Atoms	Z	Observed(°)	Ideal(°)
6	A	901	7VL	C6-C7-C8	2.57	119.61	117.56
8	A	916	NAG	C1-O5-C5	2.56	115.66	112.19
6	A	901	7VL	C11-C7-C8	-2.42	118.52	120.73
8	A	907	NAG	O5-C5-C4	-2.37	105.07	110.83
6	A	917	7VL	C5-C6-C7	-2.36	119.54	122.33
8	B	911	NAG	O3-C3-C2	2.35	114.33	109.47
6	A	901	7VL	C12-C13-C15	2.23	121.80	119.21
8	A	907	NAG	C1-C2-N2	-2.20	106.73	110.49
6	A	917	7VL	C9-C5-C6	2.13	121.17	118.16
8	A	907	NAG	C3-C4-C5	-2.09	106.51	110.24
8	A	907	NAG	O7-C7-N2	2.03	125.69	121.95
8	A	916	NAG	O3-C3-C4	-2.03	105.65	110.35
6	A	917	7VL	C12-C13-C15	2.00	121.54	119.21

There are no chirality outliers.

All (2) torsion outliers are listed below:

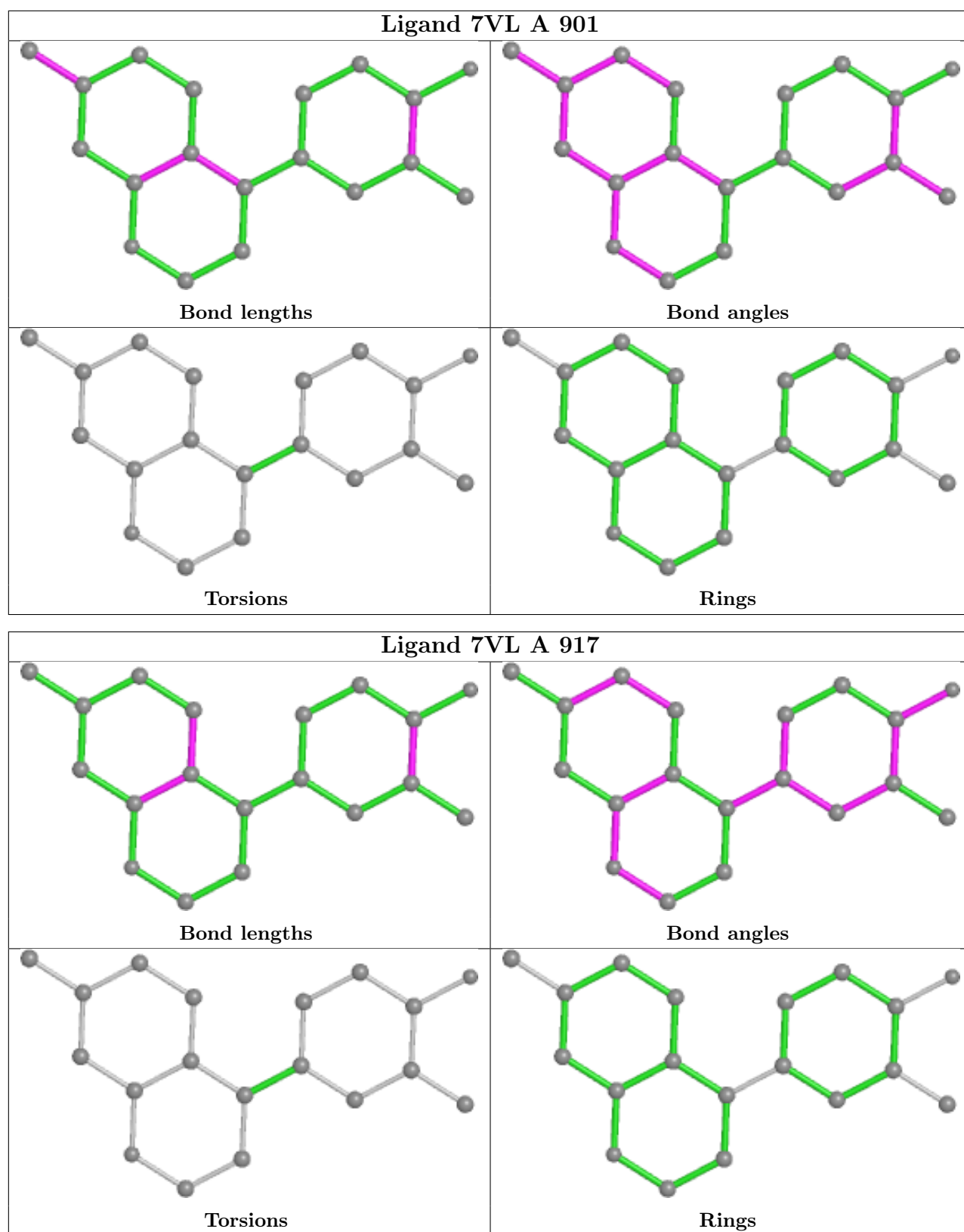
Mol	Chain	Res	Type	Atoms
8	A	915	NAG	C4-C5-C6-O6
8	A	915	NAG	O5-C5-C6-O6

There are no ring outliers.

1 monomer is involved in 1 short contact:

Mol	Chain	Res	Type	Clashes	Symm-Clashes
8	B	911	NAG	1	0

The following is a two-dimensional graphical depiction of Mogul quality analysis of bond lengths, bond angles, torsion angles, and ring geometry for all instances of the Ligand of Interest. In addition, ligands with molecular weight > 250 and outliers as shown on the validation Tables will also be included. For torsion angles, if less than 5% of the Mogul distribution of torsion angles is within 10 degrees of the torsion angle in question, then that torsion angle is considered an outlier. Any bond that is central to one or more torsion angles identified as an outlier by Mogul will be highlighted in the graph. For rings, the root-mean-square deviation (RMSD) between the ring in question and similar rings identified by Mogul is calculated over all ring torsion angles. If the average RMSD is greater than 60 degrees and the minimal RMSD between the ring in question and any Mogul-identified rings is also greater than 60 degrees, then that ring is considered an outlier. The outliers are highlighted in purple. The color gray indicates Mogul did not find sufficient equivalents in the CSD to analyse the geometry.



5.7 Other polymers [\(i\)](#)

There are no such residues in this entry.

5.8 Polymer linkage issues

There are no chain breaks in this entry.

6 Fit of model and data [i](#)

6.1 Protein, DNA and RNA chains [i](#)

In the following table, the column labelled ‘#RSRZ > 2’ contains the number (and percentage) of RSRZ outliers, followed by percent RSRZ outliers for the chain as percentile scores relative to all X-ray entries and entries of similar resolution. The OWAB column contains the minimum, median, 95th percentile and maximum values of the occupancy-weighted average B-factor per residue. The column labelled ‘Q < 0.9’ lists the number of (and percentage) of residues with an average occupancy less than 0.9.

Mol	Chain	Analysed	<RSRZ>	#RSRZ>2	OWAB(Å ²)	Q<0.9
1	A	743/811 (91%)	-0.50	6 (0%) 82 78	44, 77, 126, 159	0
1	B	738/811 (90%)	-0.44	9 (1%) 76 71	47, 81, 127, 185	0
All	All	1481/1622 (91%)	-0.47	15 (1%) 79 74	44, 79, 126, 185	0

All (15) RSRZ outliers are listed below:

Mol	Chain	Res	Type	RSRZ
1	B	461	PHE	4.0
1	A	732	LEU	3.7
1	B	732	LEU	3.1
1	A	100	VAL	3.1
1	A	264	PRO	2.8
1	B	572	GLY	2.6
1	B	285	ASN	2.6
1	A	571	ALA	2.6
1	B	264	PRO	2.6
1	B	182	TYR	2.5
1	B	567	TYR	2.4
1	A	756	LEU	2.3
1	B	183	PHE	2.1
1	A	570	ILE	2.1
1	B	467	PHE	2.1

6.2 Non-standard residues in protein, DNA, RNA chains [i](#)

In the following table, the Atoms column lists the number of modelled atoms in the group and the number defined in the chemical component dictionary. The B-factors column lists the minimum, median, 95th percentile and maximum values of B factors of atoms in the group. The column labelled ‘Q < 0.9’ lists the number of atoms with occupancy less than 0.9.

Mol	Type	Chain	Res	Atoms	RSCC	RSR	B-factors(Å ²)	Q<0.9
4	MAN	E	4	11/12	0.61	0.09	92,104,123,131	0
5	MAN	H	4	11/12	0.64	0.10	94,113,121,122	0
8	NAG	A	916	14/15	0.73	0.12	94,124,142,155	0
5	MAN	F	4	11/12	0.75	0.10	92,105,110,111	0
2	MAN	C	4	11/12	0.79	0.10	79,99,120,124	0
4	MAN	E	5	11/12	0.79	0.09	83,93,103,103	0
7	MAN	A	906	11/12	0.80	0.08	95,103,110,112	0
3	NAG	D	2	14/15	0.84	0.09	74,86,107,109	0
3	NAG	G	2	14/15	0.85	0.09	68,84,104,117	0
8	NAG	A	907	14/15	0.91	0.07	64,71,82,85	0
8	NAG	B	911	14/15	0.91	0.07	85,93,103,111	0
8	NAG	A	915	14/15	0.92	0.07	66,80,83,104	0
2	NAG	C	2	14/15	0.94	0.08	42,52,66,71	0
5	NAG	F	2	14/15	0.95	0.08	56,65,81,84	0
4	NAG	E	1	14/15	0.96	0.07	48,52,60,64	0
5	NAG	H	2	14/15	0.96	0.06	55,61,73,76	0
5	NAG	F	1	14/15	0.96	0.06	55,60,74,93	0
3	NAG	G	1	14/15	0.96	0.06	51,60,65,73	0
5	NAG	H	1	14/15	0.97	0.06	48,54,61,63	0
2	NAG	C	1	14/15	0.97	0.06	47,53,59,60	0
3	NAG	D	1	14/15	0.97	0.05	42,49,64,70	0
4	NAG	E	2	14/15	0.97	0.05	39,49,59,62	0

6.3 Carbohydrates [i](#)

In the following table, the Atoms column lists the number of modelled atoms in the group and the number defined in the chemical component dictionary. The B-factors column lists the minimum, median, 95th percentile and maximum values of B factors of atoms in the group. The column labelled 'Q< 0.9' lists the number of atoms with occupancy less than 0.9.

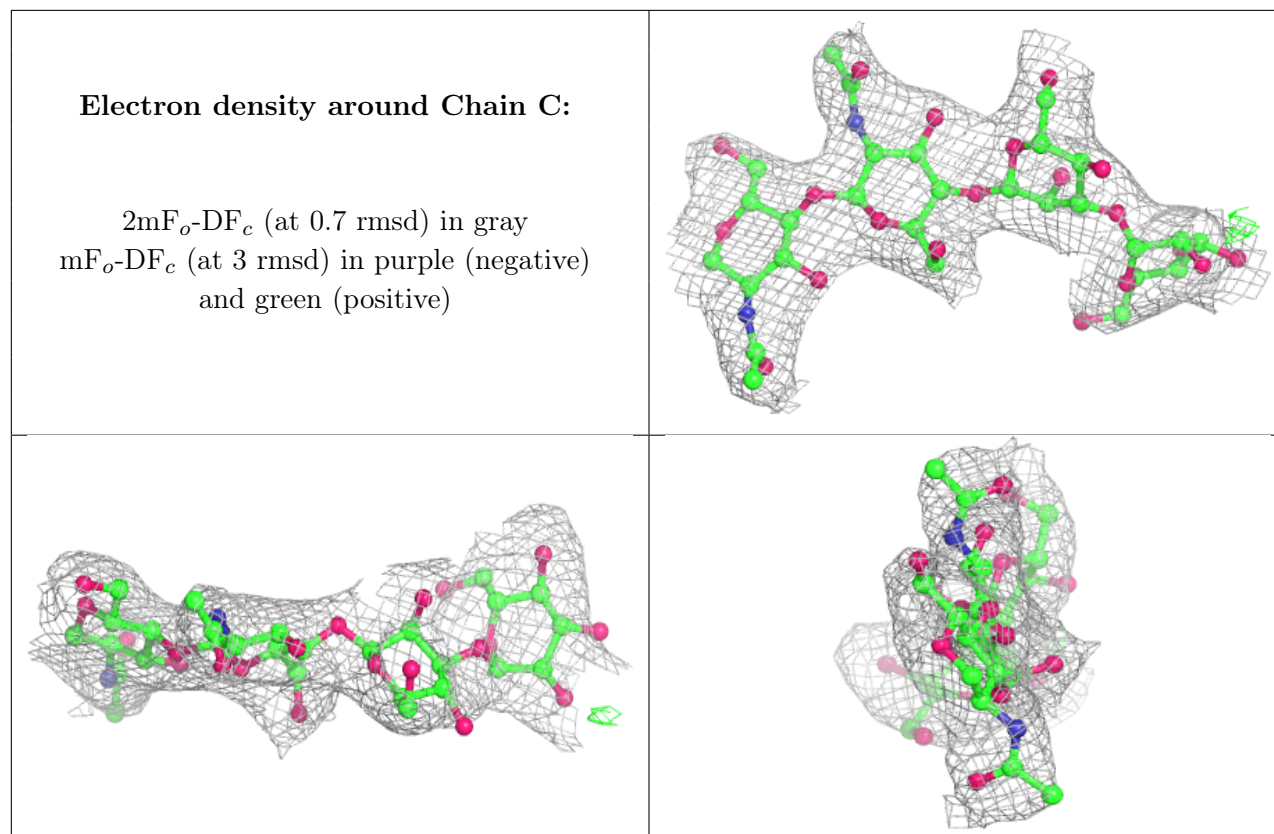
Mol	Type	Chain	Res	Atoms	RSCC	RSR	B-factors(Å ²)	Q<0.9
4	MAN	E	4	11/12	0.61	0.09	92,104,123,131	0
5	MAN	H	4	11/12	0.64	0.10	94,113,121,122	0
5	MAN	F	4	11/12	0.75	0.10	92,105,110,111	0
2	MAN	C	4	11/12	0.79	0.10	79,99,120,124	0
4	MAN	E	5	11/12	0.79	0.09	83,93,103,103	0
5	BMA	F	3	11/12	0.80	0.10	68,90,111,117	0
3	NAG	D	2	14/15	0.84	0.09	74,86,107,109	0
3	NAG	G	2	14/15	0.85	0.09	68,84,104,117	0
5	BMA	H	3	11/12	0.90	0.07	69,77,103,115	0
2	BMA	C	3	11/12	0.92	0.06	77,85,91,99	0
2	NAG	C	2	14/15	0.94	0.08	42,52,66,71	0
4	BMA	E	3	11/12	0.94	0.05	65,76,85,97	0

Continued on next page...

Continued from previous page...

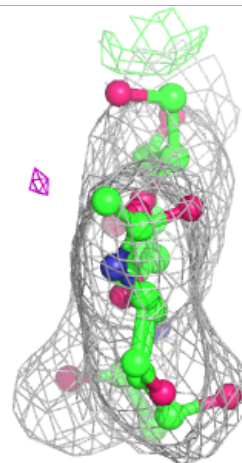
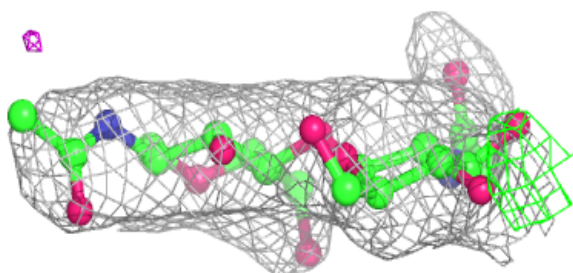
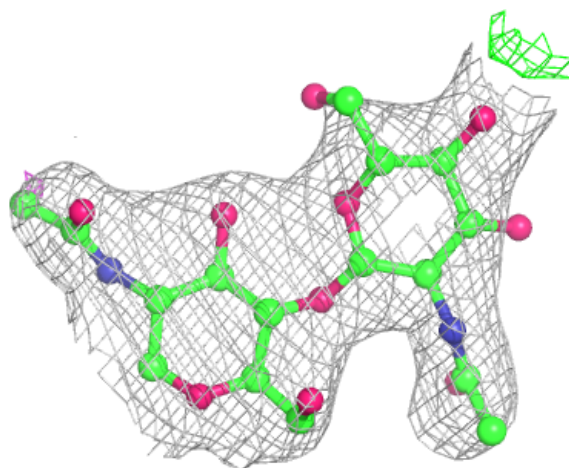
Mol	Type	Chain	Res	Atoms	RSCC	RSR	B-factors(\AA^2)	Q<0.9
5	NAG	F	2	14/15	0.95	0.08	56,65,81,84	0
5	NAG	F	1	14/15	0.96	0.06	55,60,74,93	0
5	NAG	H	2	14/15	0.96	0.06	55,61,73,76	0
4	NAG	E	1	14/15	0.96	0.07	48,52,60,64	0
3	NAG	G	1	14/15	0.96	0.06	51,60,65,73	0
5	NAG	H	1	14/15	0.97	0.06	48,54,61,63	0
3	NAG	D	1	14/15	0.97	0.05	42,49,64,70	0
4	NAG	E	2	14/15	0.97	0.05	39,49,59,62	0
2	NAG	C	1	14/15	0.97	0.06	47,53,59,60	0

The following is a graphical depiction of the model fit to experimental electron density for oligosaccharide. Each fit is shown from different orientation to approximate a three-dimensional view.



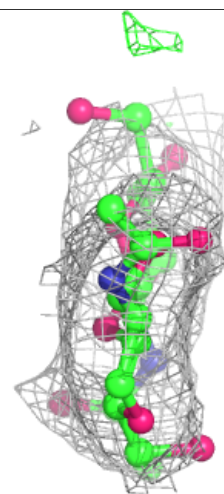
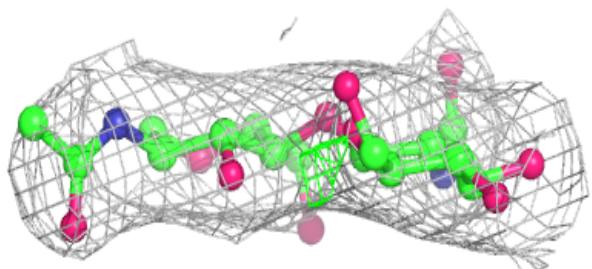
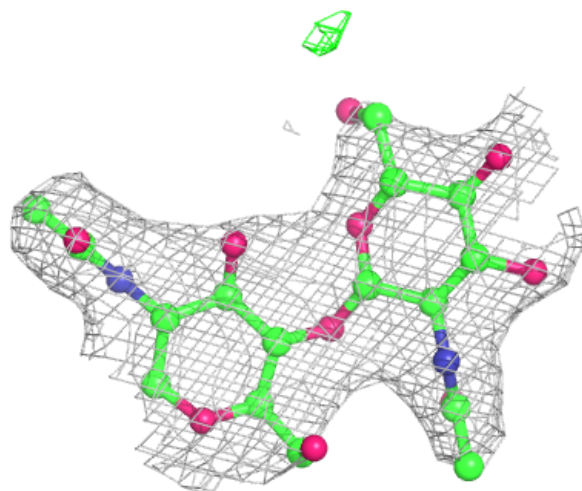
Electron density around Chain D:

$2mF_o-DF_c$ (at 0.7 rmsd) in gray
 mF_o-DF_c (at 3 rmsd) in purple (negative)
and green (positive)



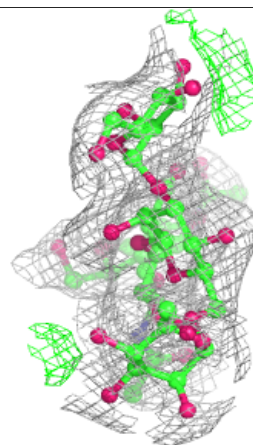
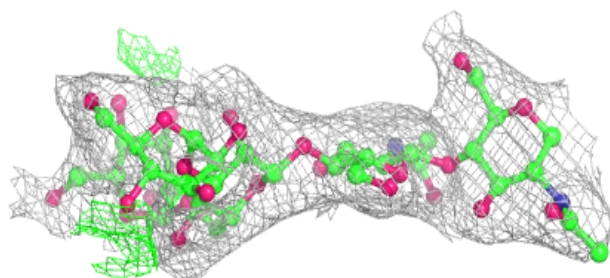
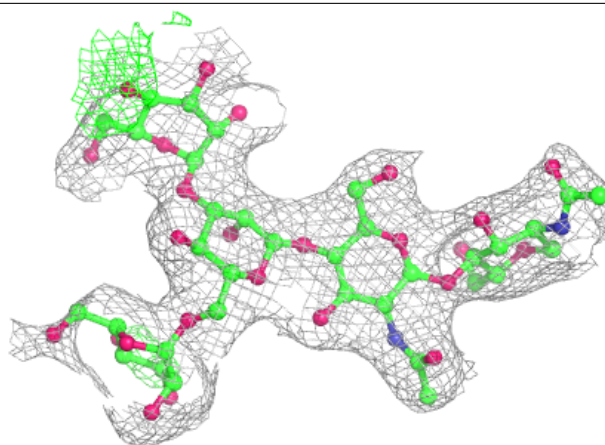
Electron density around Chain G:

$2mF_o-DF_c$ (at 0.7 rmsd) in gray
 mF_o-DF_c (at 3 rmsd) in purple (negative)
and green (positive)

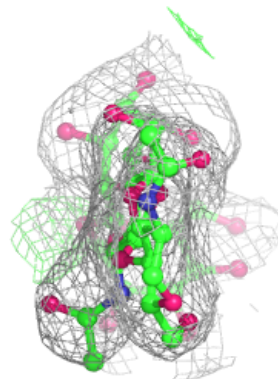
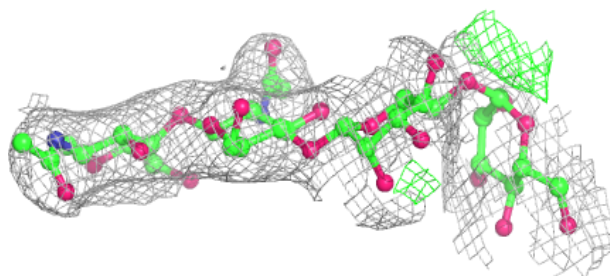
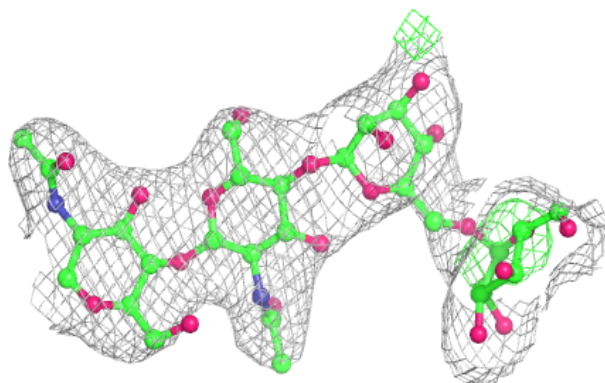


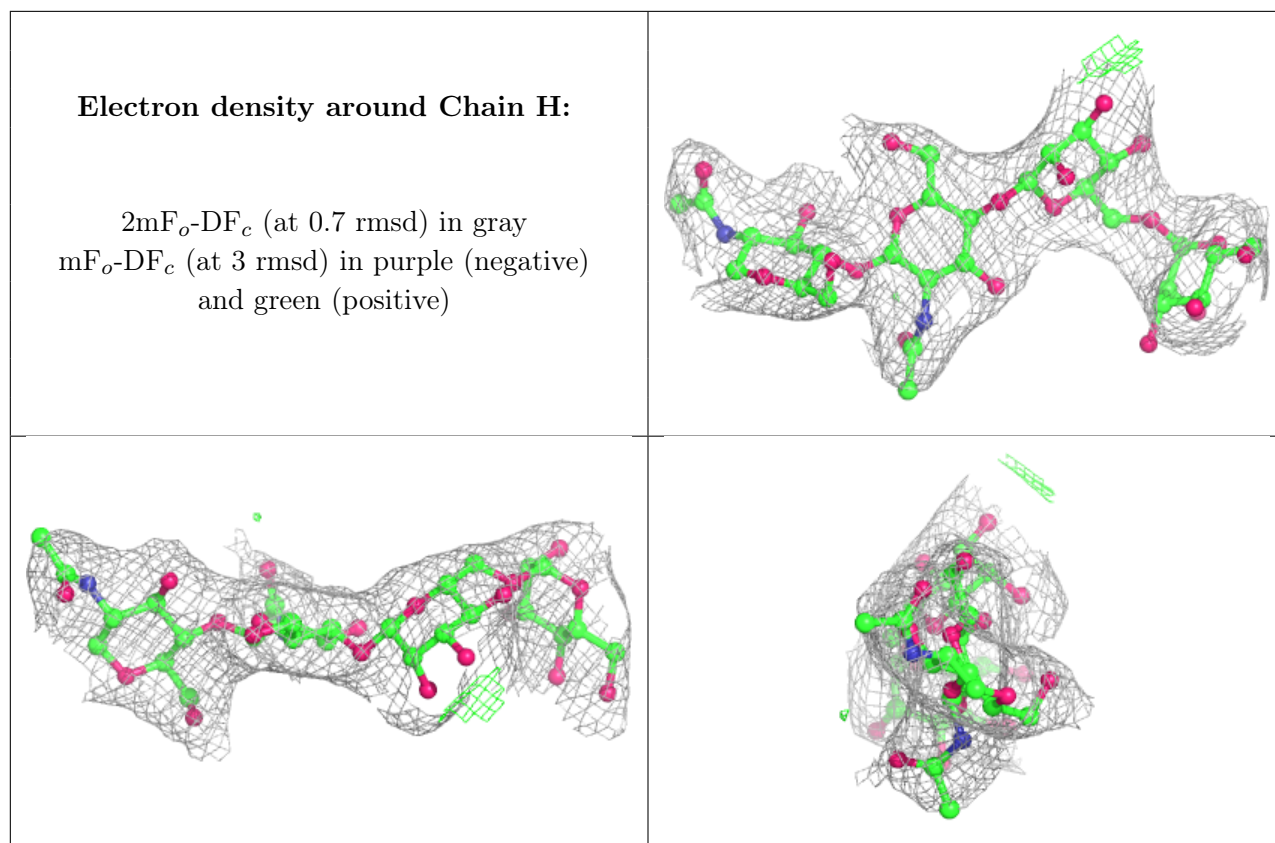
Electron density around Chain E:

$2mF_o-DF_c$ (at 0.7 rmsd) in gray
 mF_o-DF_c (at 3 rmsd) in purple (negative)
and green (positive)

**Electron density around Chain F:**

$2mF_o-DF_c$ (at 0.7 rmsd) in gray
 mF_o-DF_c (at 3 rmsd) in purple (negative)
and green (positive)





6.4 Ligands [i](#)

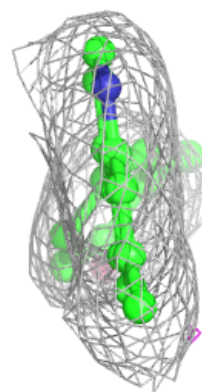
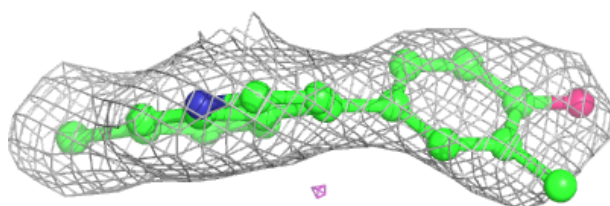
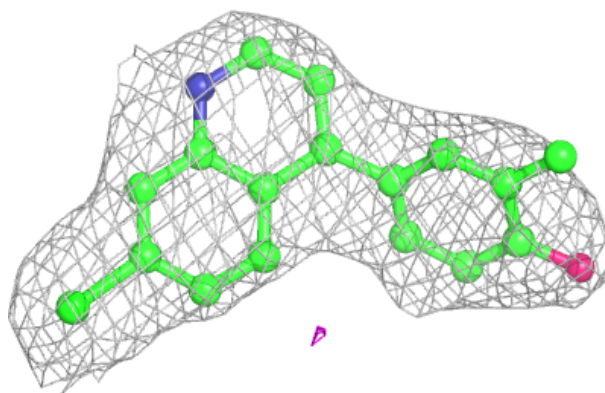
In the following table, the Atoms column lists the number of modelled atoms in the group and the number defined in the chemical component dictionary. The B-factors column lists the minimum, median, 95th percentile and maximum values of B factors of atoms in the group. The column labelled 'Q< 0.9' lists the number of atoms with occupancy less than 0.9.

Mol	Type	Chain	Res	Atoms	RSCC	RSR	B-factors(Å ²)	Q<0.9
8	NAG	A	916	14/15	0.73	0.12	94,124,142,155	0
7	MAN	A	906	11/12	0.80	0.08	95,103,110,112	0
8	NAG	A	907	14/15	0.91	0.07	64,71,82,85	0
8	NAG	B	911	14/15	0.91	0.07	85,93,103,111	0
8	NAG	A	915	14/15	0.92	0.07	66,80,83,104	0
6	7VL	A	901	19/19	0.95	0.08	53,60,69,77	0
6	7VL	A	917	19/19	0.96	0.07	55,63,79,84	0

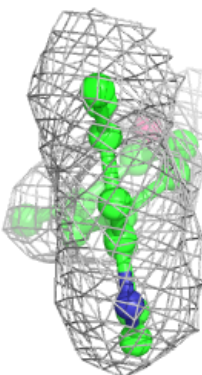
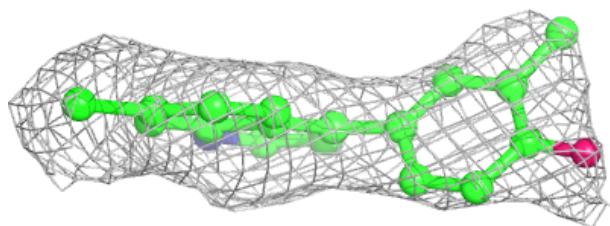
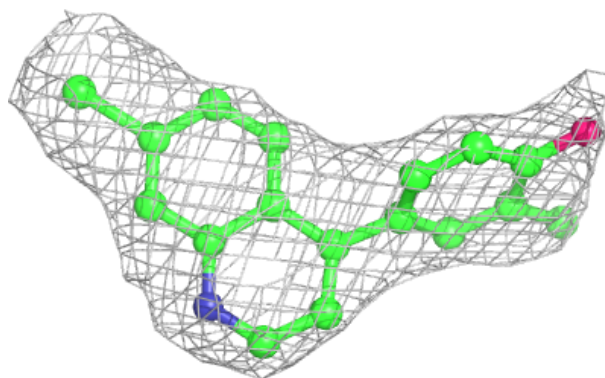
The following is a graphical depiction of the model fit to experimental electron density of all instances of the Ligand of Interest. In addition, ligands with molecular weight > 250 and outliers as shown on the geometry validation Tables will also be included. Each fit is shown from different orientation to approximate a three-dimensional view.

Electron density around 7VL A 901:

$2mF_o-DF_c$ (at 0.7 rmsd) in gray
 mF_o-DF_c (at 3 rmsd) in purple (negative)
and green (positive)

**Electron density around 7VL A 917:**

$2mF_o-DF_c$ (at 0.7 rmsd) in gray
 mF_o-DF_c (at 3 rmsd) in purple (negative)
and green (positive)



6.5 Other polymers

There are no such residues in this entry.