



# Full wwPDB X-ray Structure Validation Report ⓘ

Nov 13, 2023 – 09:19 PM JST

PDB ID : 5Y1H  
Title : Crystal structure of Plasmodium falciparum aminopeptidase N in complex with (S)-2-(3-(2,4-difluorobenzyl)ureido)-N-hydroxy-4-methylpentanamide  
Authors : Marapaka, A.K.; Zhang, Y.; Addlagatta, A.  
Deposited on : 2017-07-20  
Resolution : 1.73 Å(reported)

This is a Full wwPDB X-ray Structure Validation Report for a publicly released PDB entry.

We welcome your comments at [validation@mail.wwpdb.org](mailto:validation@mail.wwpdb.org)

A user guide is available at

<https://www.wwpdb.org/validation/2017/XrayValidationReportHelp>

with specific help available everywhere you see the ⓘ symbol.

The types of validation reports are described at

<http://www.wwpdb.org/validation/2017/FAQs#types>.

---

The following versions of software and data (see [references ⓘ](#)) were used in the production of this report:

MolProbity : 4.02b-467  
Mogul : 1.8.5 (274361), CSD as541be (2020)  
Xtrriage (Phenix) : 1.13  
EDS : 2.36  
buster-report : 1.1.7 (2018)  
Percentile statistics : 20191225.v01 (using entries in the PDB archive December 25th 2019)  
Refmac : 5.8.0158  
CCP4 : 7.0.044 (Gargrove)  
Ideal geometry (proteins) : Engh & Huber (2001)  
Ideal geometry (DNA, RNA) : Parkinson et al. (1996)  
Validation Pipeline (wwPDB-VP) : 2.36

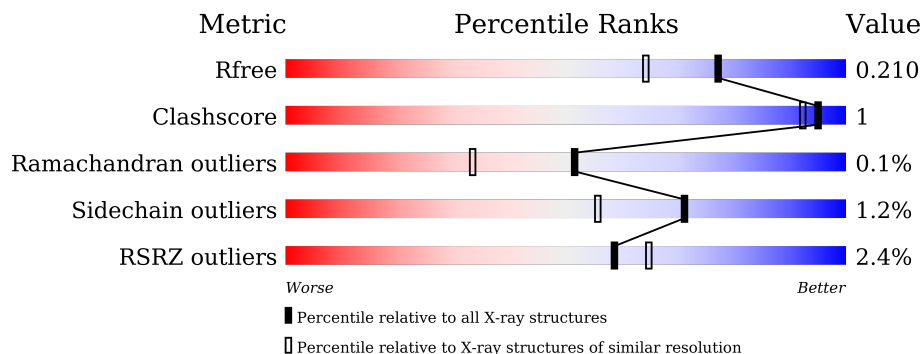
# 1 Overall quality at a glance

The following experimental techniques were used to determine the structure:

*X-RAY DIFFRACTION*

The reported resolution of this entry is 1.73 Å.

Percentile scores (ranging between 0-100) for global validation metrics of the entry are shown in the following graphic. The table shows the number of entries on which the scores are based.



Metric	Whole archive (#Entries)	Similar resolution (#Entries, resolution range(Å))
$R_{free}$	130704	3764 (1.76-1.72)
Clashscore	141614	3923 (1.76-1.72)
Ramachandran outliers	138981	3878 (1.76-1.72)
Sidechain outliers	138945	3878 (1.76-1.72)
RSRZ outliers	127900	3705 (1.76-1.72)

The table below summarises the geometric issues observed across the polymeric chains and their fit to the electron density. The red, orange, yellow and green segments of the lower bar indicate the fraction of residues that contain outliers for  $\geq 3$ , 2, 1 and 0 types of geometric quality criteria respectively. A grey segment represents the fraction of residues that are not modelled. The numeric value for each fraction is indicated below the corresponding segment, with a dot representing fractions  $\leq 5\%$ . The upper red bar (where present) indicates the fraction of residues that have poor fit to the electron density. The numeric value is given above the bar.

Mol	Chain	Length	Quality of chain
1	A	914	

## 2 Entry composition

There are 6 unique types of molecules in this entry. The entry contains 7955 atoms, of which 0 are hydrogens and 0 are deuteriums.

In the tables below, the ZeroOcc column contains the number of atoms modelled with zero occupancy, the AltConf column contains the number of residues with at least one atom in alternate conformation and the Trace column contains the number of residues modelled with at most 2 atoms.

- Molecule 1 is a protein called M1 family aminopeptidase.

Mol	Chain	Residues	Atoms					ZeroOcc	AltConf	Trace
			Total	C	N	O	S			
1	A	890	7350	4719	1198	1406	27	0	9	0

There are 23 discrepancies between the modelled and reference sequences:

Chain	Residue	Modelled	Actual	Comment	Reference
A	172	MET	-	expression tag	UNP O96935
A	173	GLY	-	expression tag	UNP O96935
A	174	SER	-	expression tag	UNP O96935
A	175	SER	-	expression tag	UNP O96935
A	176	HIS	-	expression tag	UNP O96935
A	177	HIS	-	expression tag	UNP O96935
A	178	HIS	-	expression tag	UNP O96935
A	179	HIS	-	expression tag	UNP O96935
A	180	HIS	-	expression tag	UNP O96935
A	181	HIS	-	expression tag	UNP O96935
A	182	SER	-	expression tag	UNP O96935
A	183	SER	-	expression tag	UNP O96935
A	184	GLY	-	expression tag	UNP O96935
A	185	LEU	-	expression tag	UNP O96935
A	186	VAL	-	expression tag	UNP O96935
A	187	PRO	-	expression tag	UNP O96935
A	188	ARG	-	expression tag	UNP O96935
A	189	GLY	-	expression tag	UNP O96935
A	190	SER	-	expression tag	UNP O96935
A	191	HIS	-	expression tag	UNP O96935
A	192	MET	-	expression tag	UNP O96935
A	193	ALA	-	expression tag	UNP O96935
A	194	SER	-	expression tag	UNP O96935

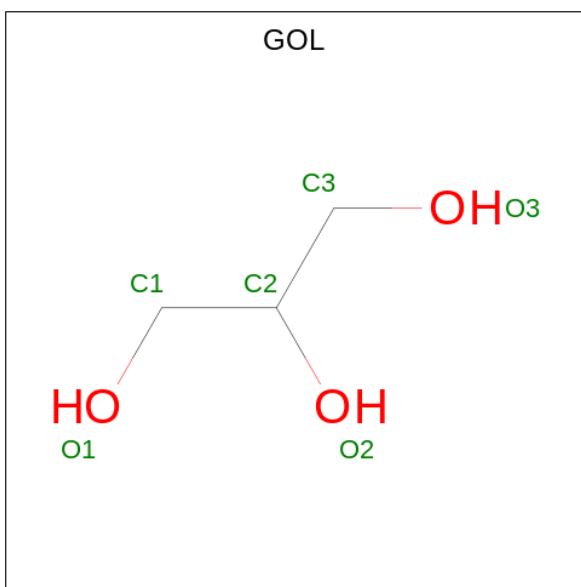
- Molecule 2 is MAGNESIUM ION (three-letter code: MG) (formula: Mg).

Mol	Chain	Residues	Atoms	ZeroOcc	AltConf
2	A	3	Total Mg 3 3	0	0

- Molecule 3 is ZINC ION (three-letter code: ZN) (formula: Zn).

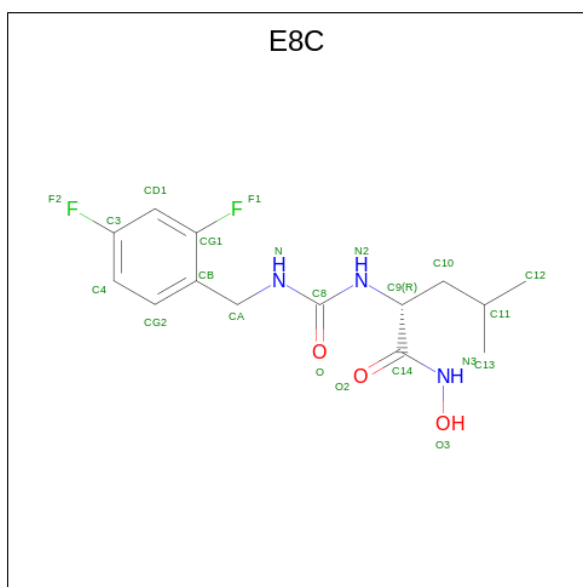
Mol	Chain	Residues	Atoms	ZeroOcc	AltConf
3	A	1	Total Zn 1 1	0	0

- Molecule 4 is GLYCEROL (three-letter code: GOL) (formula: C<sub>3</sub>H<sub>8</sub>O<sub>3</sub>).



Mol	Chain	Residues	Atoms	ZeroOcc	AltConf
4	A	1	Total C O 6 3 3	0	0
4	A	1	Total C O 6 3 3	0	0
4	A	1	Total C O 6 3 3	0	0

- Molecule 5 is (2R)-2-[[2,4-bis(fluoranyl)phenyl]methylcarbamoylamino]-4-methyl-N-oxidan-yl-pentanamide (three-letter code: E8C) (formula: C<sub>14</sub>H<sub>19</sub>F<sub>2</sub>N<sub>3</sub>O<sub>3</sub>) (labeled as "Ligand of Interest" by depositor).



Mol	Chain	Residues	Atoms					ZeroOcc	AltConf
			Total	C	F	N	O		
5	A	1	22	14	2	3	3	0	0

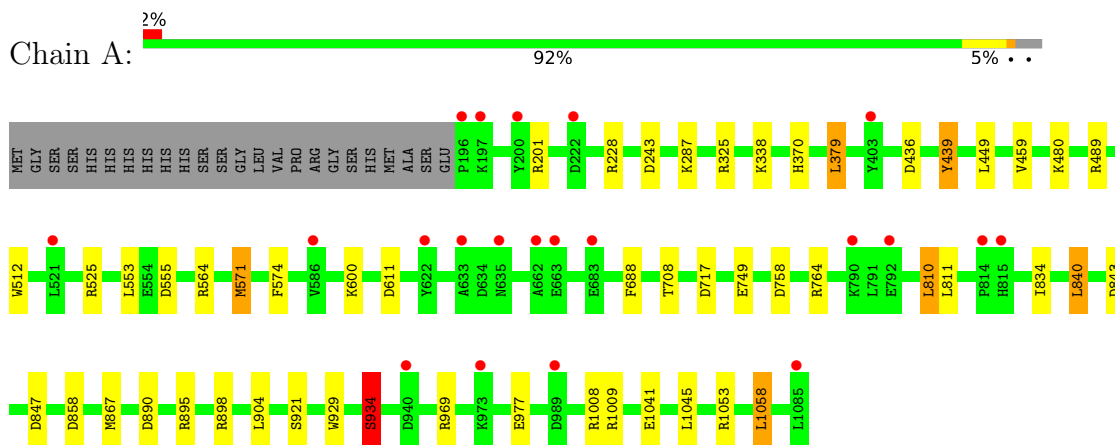
- Molecule 6 is water.

Mol	Chain	Residues	Atoms		ZeroOcc	AltConf
6	A	561	Total	O	0	0
			561	561		

### 3 Residue-property plots [i](#)

These plots are drawn for all protein, RNA, DNA and oligosaccharide chains in the entry. The first graphic for a chain summarises the proportions of the various outlier classes displayed in the second graphic. The second graphic shows the sequence view annotated by issues in geometry and electron density. Residues are color-coded according to the number of geometric quality criteria for which they contain at least one outlier: green = 0, yellow = 1, orange = 2 and red = 3 or more. A red dot above a residue indicates a poor fit to the electron density ( $RSRZ > 2$ ). Stretches of 2 or more consecutive residues without any outlier are shown as a green connector. Residues present in the sample, but not in the model, are shown in grey.

- Molecule 1: M1 family aminopeptidase



## 4 Data and refinement statistics

Property	Value	Source
Space group	P 21 21 21	Depositor
Cell constants a, b, c, $\alpha$ , $\beta$ , $\gamma$	74.56Å 109.24Å 112.52Å 90.00° 90.00° 90.00°	Depositor
Resolution (Å)	24.66 – 1.73 24.66 – 1.73	Depositor EDS
% Data completeness (in resolution range)	99.0 (24.66-1.73) 99.0 (24.66-1.73)	Depositor EDS
$R_{merge}$	0.05	Depositor
$R_{sym}$	(Not available)	Depositor
$\langle I/\sigma(I) \rangle$ <sup>1</sup>	30.13 (at 1.73Å)	Xtrriage
Refinement program	REFMAC 5.8.0135 : 01/10/15	Depositor
R, $R_{free}$	0.161 , 0.201 0.174 , 0.210	Depositor DCC
$R_{free}$ test set	4826 reflections (5.06%)	wwPDB-VP
Wilson B-factor (Å <sup>2</sup> )	19.4	Xtrriage
Anisotropy	0.016	Xtrriage
Bulk solvent $k_{sol}$ (e/Å <sup>3</sup> ), $B_{sol}$ (Å <sup>2</sup> )	0.37 , 43.2	EDS
L-test for twinning <sup>2</sup>	$\langle  L  \rangle = 0.51$ , $\langle L^2 \rangle = 0.35$	Xtrriage
Estimated twinning fraction	0.004 for -h,l,k	Xtrriage
$F_o, F_c$ correlation	0.96	EDS
Total number of atoms	7955	wwPDB-VP
Average B, all atoms (Å <sup>2</sup> )	20.0	wwPDB-VP

Xtrriage's analysis on translational NCS is as follows: *The largest off-origin peak in the Patterson function is 4.72% of the height of the origin peak. No significant pseudotranslation is detected.*

<sup>1</sup>Intensities estimated from amplitudes.

<sup>2</sup>Theoretical values of  $\langle |L| \rangle$ ,  $\langle L^2 \rangle$  for acentric reflections are 0.5, 0.333 respectively for untwinned datasets, and 0.375, 0.2 for perfectly twinned datasets.

## 5 Model quality [i](#)

### 5.1 Standard geometry [i](#)

Bond lengths and bond angles in the following residue types are not validated in this section: E8C, GOL, MG, ZN

The Z score for a bond length (or angle) is the number of standard deviations the observed value is removed from the expected value. A bond length (or angle) with  $|Z| > 5$  is considered an outlier worth inspection. RMSZ is the root-mean-square of all Z scores of the bond lengths (or angles).

Mol	Chain	Bond lengths		Bond angles	
		RMSZ	# Z  >5	RMSZ	# Z  >5
1	A	1.04	4/7540 (0.1%)	1.10	37/10191 (0.4%)

All (4) bond length outliers are listed below:

Mol	Chain	Res	Type	Atoms	Z	Observed(Å)	Ideal(Å)
1	A	564	ARG	CZ-NH1	10.59	1.46	1.33
1	A	449	LEU	N-CA	9.28	1.65	1.46
1	A	934	SER	CB-OG	-7.81	1.32	1.42
1	A	921	SER	CB-OG	6.89	1.51	1.42

All (37) bond angle outliers are listed below:

Mol	Chain	Res	Type	Atoms	Z	Observed(°)	Ideal(°)
1	A	564	ARG	NE-CZ-NH2	-19.27	110.67	120.30
1	A	564	ARG	NE-CZ-NH1	18.66	129.63	120.30
1	A	898	ARG	NE-CZ-NH1	11.61	126.11	120.30
1	A	489[A]	ARG	NE-CZ-NH1	-9.10	115.75	120.30
1	A	489[B]	ARG	NE-CZ-NH1	-9.10	115.75	120.30
1	A	843	ASP	CB-CG-OD2	-8.90	110.29	118.30
1	A	898	ARG	NE-CZ-NH2	-8.70	115.95	120.30
1	A	847	ASP	CB-CG-OD2	-8.01	111.09	118.30
1	A	895	ARG	NE-CZ-NH1	8.01	124.30	120.30
1	A	858	ASP	CB-CG-OD1	7.93	125.44	118.30
1	A	717	ASP	CB-CG-OD1	7.31	124.88	118.30
1	A	571	MET	CG-SD-CE	7.25	111.79	100.20
1	A	1053	ARG	NE-CZ-NH2	-7.19	116.70	120.30
1	A	379	LEU	CA-CB-CG	6.96	131.30	115.30
1	A	611	ASP	CB-CG-OD1	-6.78	112.20	118.30
1	A	325	ARG	NE-CZ-NH1	6.68	123.64	120.30
1	A	201	ARG	NE-CZ-NH1	6.53	123.56	120.30

*Continued on next page...*



Continued from previous page...

Mol	Chain	Res	Type	Atoms	Z	Observed(°)	Ideal(°)
1	A	1009	ARG	NE-CZ-NH1	6.42	123.51	120.30
1	A	228	ARG	NE-CZ-NH1	6.15	123.38	120.30
1	A	758	ASP	CB-CG-OD1	6.11	123.79	118.30
1	A	840	LEU	CB-CG-CD1	-5.91	100.96	111.00
1	A	325	ARG	NE-CZ-NH2	-5.89	117.36	120.30
1	A	525	ARG	NE-CZ-NH2	-5.87	117.37	120.30
1	A	847	ASP	CB-CG-OD1	5.84	123.56	118.30
1	A	929	TRP	CA-CB-CG	5.83	124.78	113.70
1	A	489[A]	ARG	NE-CZ-NH2	5.71	123.16	120.30
1	A	489[B]	ARG	NE-CZ-NH2	5.71	123.16	120.30
1	A	439	TYR	CB-CG-CD1	5.39	124.23	121.00
1	A	243	ASP	CB-CG-OD1	5.32	123.09	118.30
1	A	1053	ARG	NE-CZ-NH1	5.31	122.96	120.30
1	A	243	ASP	CB-CG-OD2	-5.25	113.57	118.30
1	A	717	ASP	CB-CG-OD2	-5.24	113.58	118.30
1	A	1058	LEU	CB-CG-CD2	5.16	119.77	111.00
1	A	480	LYS	CA-CB-CG	5.14	124.71	113.40
1	A	764	ARG	NE-CZ-NH2	-5.10	117.75	120.30
1	A	574	PHE	CB-CA-C	5.08	120.57	110.40
1	A	810	LEU	CB-CG-CD1	5.03	119.55	111.00

There are no chirality outliers.

There are no planarity outliers.

## 5.2 Too-close contacts

In the following table, the Non-H and H(model) columns list the number of non-hydrogen atoms and hydrogen atoms in the chain respectively. The H(added) column lists the number of hydrogen atoms added and optimized by MolProbity. The Clashes column lists the number of clashes within the asymmetric unit, whereas Symm-Clashes lists symmetry-related clashes.

Mol	Chain	Non-H	H(model)	H(added)	Clashes	Symm-Clashes
1	A	7350	0	7291	17	0
2	A	3	0	0	0	0
3	A	1	0	0	0	0
4	A	18	0	24	2	0
5	A	22	0	0	0	0
6	A	561	0	0	11	0
All	All	7955	0	7315	18	0

The all-atom clashscore is defined as the number of clashes found per 1000 atoms (including

hydrogen atoms). The all-atom clashscore for this structure is 1.

All (18) close contacts within the same asymmetric unit are listed below, sorted by their clash magnitude.

Atom-1	Atom-2	Interatomic distance (Å)	Clash overlap (Å)
1:A:934:SER:HB3	6:A:1283:HOH:O	1.83	0.77
1:A:890[A]:ASP:OD1	6:A:1202:HOH:O	2.08	0.69
1:A:708:THR:CG2	6:A:1685:HOH:O	2.50	0.60
1:A:969:ARG:HG3	6:A:1283:HOH:O	2.01	0.60
1:A:708:THR:HG21	6:A:1685:HOH:O	2.01	0.59
1:A:287:LYS:HG3	6:A:1690:HOH:O	2.04	0.57
1:A:834:ILE:HG12	1:A:840:LEU:HD22	1.87	0.56
1:A:811:LEU:HB3	1:A:867:MET:SD	2.49	0.52
1:A:749:GLU:OE1	6:A:1203:HOH:O	2.19	0.52
1:A:904:LEU:HD23	4:A:1105:GOL:H2	1.94	0.49
1:A:969:ARG:HD2	6:A:1215:HOH:O	2.15	0.46
1:A:439:TYR:O	1:A:600:LYS:HE2	2.15	0.46
1:A:512:TRP:HB3	1:A:571:MET:HG2	1.96	0.46
4:A:1106:GOL:H11	6:A:1571:HOH:O	2.15	0.46
1:A:553:LEU:C	1:A:553:LEU:HD23	2.36	0.46
1:A:287:LYS:CG	6:A:1690:HOH:O	2.66	0.43
1:A:977:GLU:HG2	6:A:1694:HOH:O	2.19	0.41
1:A:338:LYS:HG3	1:A:379:LEU:HD23	2.02	0.40

There are no symmetry-related clashes.

## 5.3 Torsion angles [i](#)

### 5.3.1 Protein backbone [i](#)

In the following table, the Percentiles column shows the percent Ramachandran outliers of the chain as a percentile score with respect to all X-ray entries followed by that with respect to entries of similar resolution.

The Analysed column shows the number of residues for which the backbone conformation was analysed, and the total number of residues.

Mol	Chain	Analysed	Favoured	Allowed	Outliers	Percentiles
1	A	897/914 (98%)	883 (98%)	13 (1%)	1 (0%)	51 33

All (1) Ramachandran outliers are listed below:

Mol	Chain	Res	Type
1	A	459	VAL

### 5.3.2 Protein sidechains [i](#)

In the following table, the Percentiles column shows the percent sidechain outliers of the chain as a percentile score with respect to all X-ray entries followed by that with respect to entries of similar resolution.

The Analysed column shows the number of residues for which the sidechain conformation was analysed, and the total number of residues.

Mol	Chain	Analysed	Rotameric	Outliers	Percentiles
1	A	831/842 (99%)	821 (99%)	10 (1%)	71 56

All (10) residues with a non-rotameric sidechain are listed below:

Mol	Chain	Res	Type
1	A	370	HIS
1	A	436	ASP
1	A	555	ASP
1	A	688	PHE
1	A	810	LEU
1	A	934	SER
1	A	1008	ARG
1	A	1041	GLU
1	A	1045	LEU
1	A	1058	LEU

Sometimes sidechains can be flipped to improve hydrogen bonding and reduce clashes. All (2) such sidechains are listed below:

Mol	Chain	Res	Type
1	A	199	HIS
1	A	829	GLN

### 5.3.3 RNA [i](#)

There are no RNA molecules in this entry.

## 5.4 Non-standard residues in protein, DNA, RNA chains [i](#)

There are no non-standard protein/DNA/RNA residues in this entry.

## 5.5 Carbohydrates [i](#)

There are no monosaccharides in this entry.

## 5.6 Ligand geometry [i](#)

Of 8 ligands modelled in this entry, 4 are monoatomic - leaving 4 for Mogul analysis.

In the following table, the Counts columns list the number of bonds (or angles) for which Mogul statistics could be retrieved, the number of bonds (or angles) that are observed in the model and the number of bonds (or angles) that are defined in the Chemical Component Dictionary. The Link column lists molecule types, if any, to which the group is linked. The Z score for a bond length (or angle) is the number of standard deviations the observed value is removed from the expected value. A bond length (or angle) with  $|Z| > 2$  is considered an outlier worth inspection. RMSZ is the root-mean-square of all Z scores of the bond lengths (or angles).

Mol	Type	Chain	Res	Link	Bond lengths			Bond angles		
					Counts	RMSZ	# Z  > 2	Counts	RMSZ	# Z  > 2
4	GOL	A	1106	-	5,5,5	0.82	0	5,5,5	0.65	0
5	E8C	A	1108	3	22,22,22	1.93	5 (22%)	28,29,29	2.64	15 (53%)
4	GOL	A	1107	-	5,5,5	0.22	0	5,5,5	0.18	0
4	GOL	A	1105	-	5,5,5	0.71	0	5,5,5	0.67	0

In the following table, the Chirals column lists the number of chiral outliers, the number of chiral centers analysed, the number of these observed in the model and the number defined in the Chemical Component Dictionary. Similar counts are reported in the Torsion and Rings columns. '2' means no outliers of that kind were identified.

Mol	Type	Chain	Res	Link	Chirals	Torsions	Rings
4	GOL	A	1106	-	-	3/4/4/4	-
5	E8C	A	1108	3	-	2/19/19/19	0/1/1/1
4	GOL	A	1107	-	-	2/4/4/4	-
4	GOL	A	1105	-	-	2/4/4/4	-

All (5) bond length outliers are listed below:

Mol	Chain	Res	Type	Atoms	Z	Observed(Å)	Ideal(Å)
5	A	1108	E8C	CA-N	4.96	1.55	1.46
5	A	1108	E8C	C9-N2	-4.10	1.37	1.45
5	A	1108	E8C	CB-CG1	4.04	1.45	1.38
5	A	1108	E8C	C8-N	2.43	1.40	1.35
5	A	1108	E8C	C8-N2	2.38	1.40	1.35

All (15) bond angle outliers are listed below:

Mol	Chain	Res	Type	Atoms	Z	Observed(°)	Ideal(°)
5	A	1108	E8C	F1-CG1-CB	6.63	128.78	117.96
5	A	1108	E8C	CD1-CG1-CB	-4.50	118.08	123.98
5	A	1108	E8C	C10-C9-N2	-4.38	100.49	110.58
5	A	1108	E8C	CA-CB-CG2	-4.08	111.71	121.00
5	A	1108	E8C	CA-CB-CG1	3.93	128.53	120.88
5	A	1108	E8C	C9-N2-C8	-3.40	112.83	120.64
5	A	1108	E8C	O-C8-N	-3.31	116.74	122.50
5	A	1108	E8C	F1-CG1-CD1	-2.75	113.14	118.61
5	A	1108	E8C	CB-CA-N	2.64	118.61	113.03
5	A	1108	E8C	O2-C14-N3	-2.26	120.34	123.27
5	A	1108	E8C	CG2-C4-C3	-2.25	116.04	118.36
5	A	1108	E8C	O2-C14-C9	2.13	124.94	120.45
5	A	1108	E8C	CG1-CD1-C3	2.09	118.82	116.62
5	A	1108	E8C	C13-C11-C12	-2.04	101.08	110.51
5	A	1108	E8C	N-C8-N2	2.02	120.58	115.92

There are no chirality outliers.

All (9) torsion outliers are listed below:

Mol	Chain	Res	Type	Atoms
4	A	1106	GOL	O1-C1-C2-C3
4	A	1106	GOL	C1-C2-C3-O3
4	A	1107	GOL	C1-C2-C3-O3
4	A	1107	GOL	O2-C2-C3-O3
5	A	1108	E8C	N-CA-CB-CG1
4	A	1106	GOL	O1-C1-C2-O2
5	A	1108	E8C	C11-C10-C9-C14
4	A	1105	GOL	C1-C2-C3-O3
4	A	1105	GOL	O2-C2-C3-O3

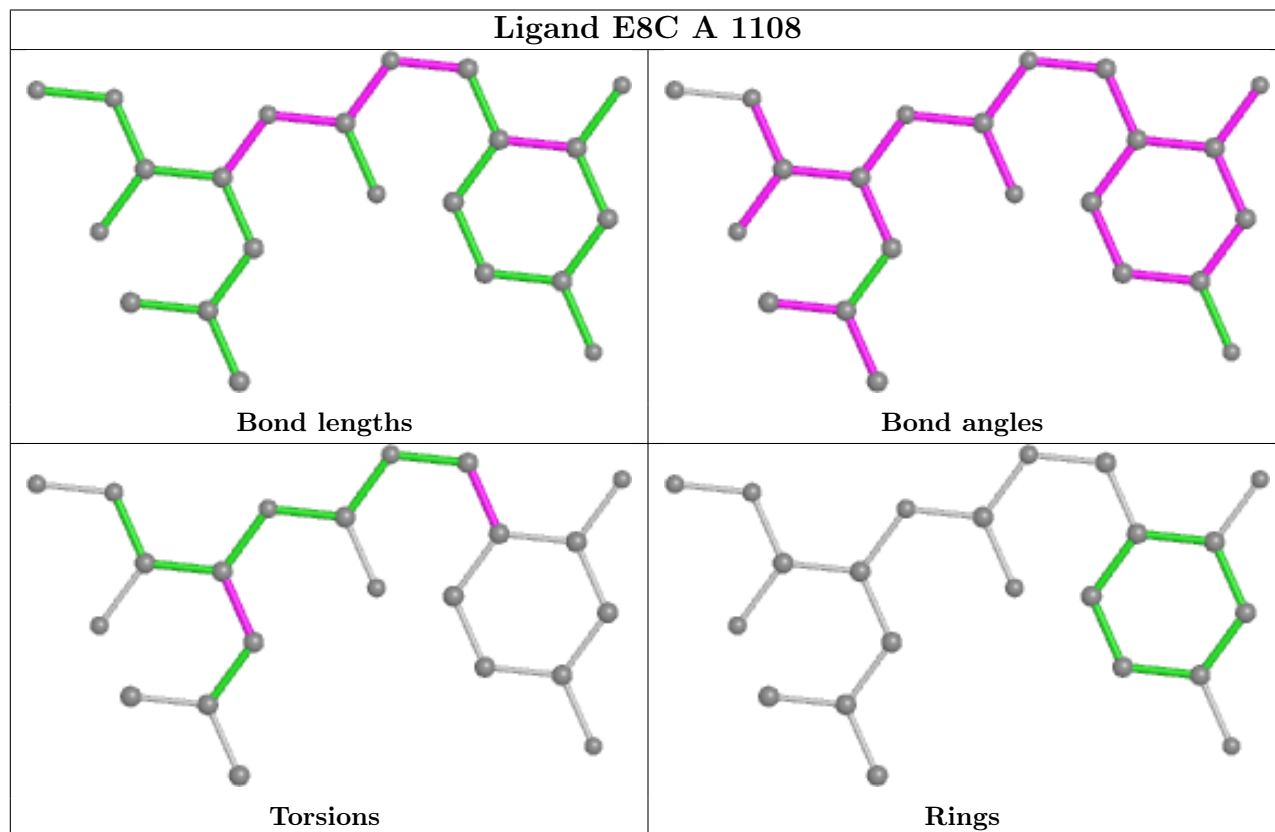
There are no ring outliers.

2 monomers are involved in 2 short contacts:

Mol	Chain	Res	Type	Clashes	Symm-Clashes
4	A	1106	GOL	1	0
4	A	1105	GOL	1	0

The following is a two-dimensional graphical depiction of Mogul quality analysis of bond lengths, bond angles, torsion angles, and ring geometry for all instances of the Ligand of Interest. In addition, ligands with molecular weight > 250 and outliers as shown on the validation Tables will also be included. For torsion angles, if less than 5% of the Mogul distribution of torsion angles is

within 10 degrees of the torsion angle in question, then that torsion angle is considered an outlier. Any bond that is central to one or more torsion angles identified as an outlier by Mogul will be highlighted in the graph. For rings, the root-mean-square deviation (RMSD) between the ring in question and similar rings identified by Mogul is calculated over all ring torsion angles. If the average RMSD is greater than 60 degrees and the minimal RMSD between the ring in question and any Mogul-identified rings is also greater than 60 degrees, then that ring is considered an outlier. The outliers are highlighted in purple. The color gray indicates Mogul did not find sufficient equivalents in the CSD to analyse the geometry.



## 5.7 Other polymers [\(i\)](#)

There are no such residues in this entry.

## 5.8 Polymer linkage issues [\(i\)](#)

There are no chain breaks in this entry.

## 6 Fit of model and data [i](#)

### 6.1 Protein, DNA and RNA chains [i](#)

In the following table, the column labelled ‘#RSRZ> 2’ contains the number (and percentage) of RSRZ outliers, followed by percent RSRZ outliers for the chain as percentile scores relative to all X-ray entries and entries of similar resolution. The OWAB column contains the minimum, median, 95<sup>th</sup> percentile and maximum values of the occupancy-weighted average B-factor per residue. The column labelled ‘Q< 0.9’ lists the number of (and percentage) of residues with an average occupancy less than 0.9.

Mol	Chain	Analysed	<RSRZ>	#RSRZ>2	OWAB(Å <sup>2</sup> )	Q<0.9
1	A	890/914 (97%)	-0.02	21 (2%) 59 65	12, 18, 33, 72	0

All (21) RSRZ outliers are listed below:

Mol	Chain	Res	Type	RSRZ
1	A	196	PRO	7.1
1	A	989	ASP	4.0
1	A	403	TYR	3.2
1	A	815	HIS	3.2
1	A	200	TYR	2.7
1	A	973	LYS	2.7
1	A	1085	LEU	2.7
1	A	790	LYS	2.6
1	A	683	GLU	2.5
1	A	940	ASP	2.5
1	A	814	PRO	2.4
1	A	633	ALA	2.4
1	A	635	ASN	2.4
1	A	197	LYS	2.3
1	A	222	ASP	2.3
1	A	622	TYR	2.3
1	A	792	GLU	2.2
1	A	521	LEU	2.2
1	A	662	ALA	2.2
1	A	663	GLU	2.1
1	A	586	VAL	2.0

### 6.2 Non-standard residues in protein, DNA, RNA chains [i](#)

There are no non-standard protein/DNA/RNA residues in this entry.

### 6.3 Carbohydrates [i](#)

There are no monosaccharides in this entry.

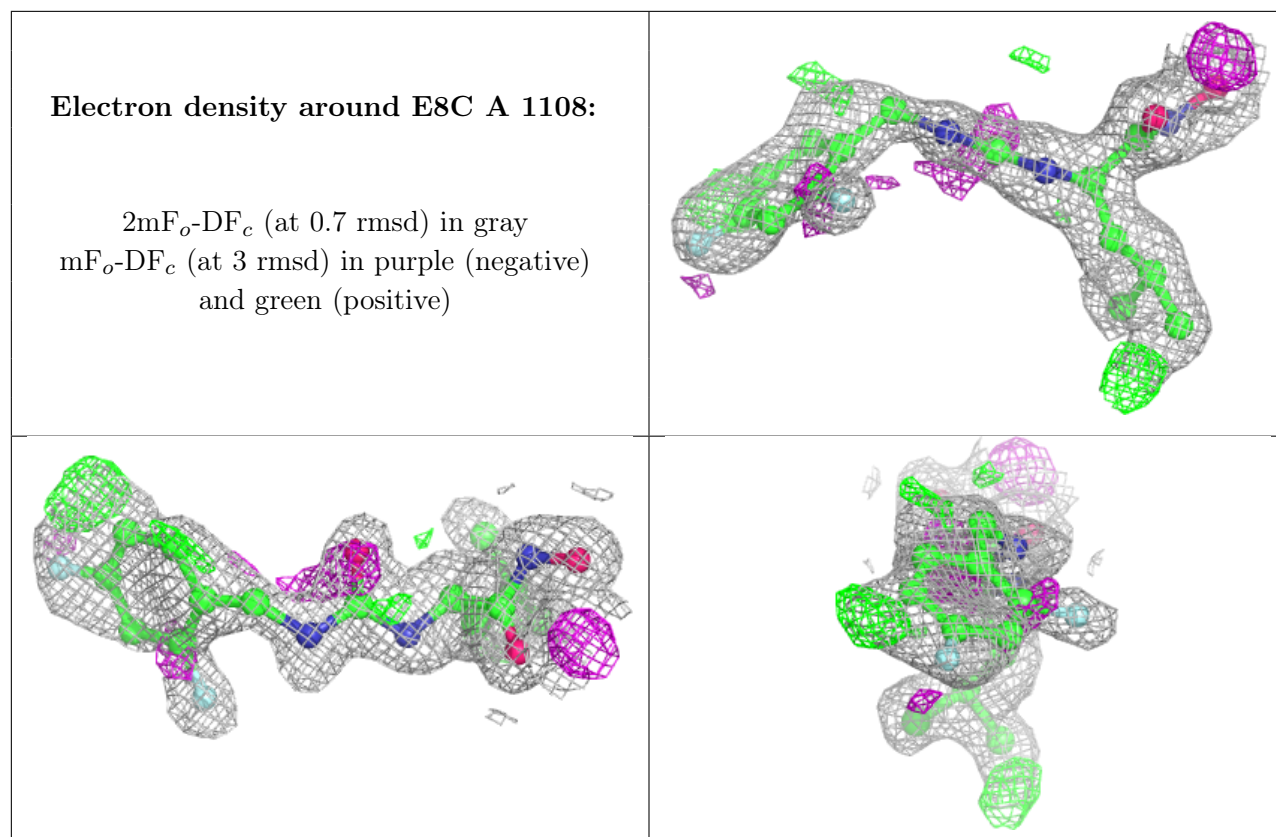
### 6.4 Ligands [i](#)

In the following table, the Atoms column lists the number of modelled atoms in the group and the number defined in the chemical component dictionary. The B-factors column lists the minimum, median, 95<sup>th</sup> percentile and maximum values of B factors of atoms in the group. The column labelled 'Q< 0.9' lists the number of atoms with occupancy less than 0.9.

Mol	Type	Chain	Res	Atoms	RSCC	RSR	B-factors( $\text{\AA}^2$ )	Q<0.9
4	GOL	A	1107	6/6	0.87	0.15	44,47,48,61	0
5	E8C	A	1108	22/22	0.87	0.18	14,24,39,42	0
4	GOL	A	1106	6/6	0.89	0.21	18,31,36,44	0
4	GOL	A	1105	6/6	0.94	0.17	30,36,39,44	0
2	MG	A	1101	1/1	0.95	0.33	30,30,30,30	0
2	MG	A	1102	1/1	0.95	0.13	22,22,22,22	0
2	MG	A	1103	1/1	0.96	0.17	27,27,27,27	0
3	ZN	A	1104	1/1	1.00	0.02	14,14,14,14	0

The following is a graphical depiction of the model fit to experimental electron density of all instances of the Ligand of Interest. In addition, ligands with molecular weight > 250 and outliers as shown on the geometry validation Tables will also be included. Each fit is shown from different orientation to approximate a three-dimensional view.





## 6.5 Other polymers [i](#)

There are no such residues in this entry.