



Full wwPDB X-ray Structure Validation Report ⓘ

Sep 25, 2023 – 03:57 AM EDT

PDB ID : 5VEE
Title : PAK4 kinase domain in complex with FRAX486
Authors : Zhang, E.Y.; Ha, B.H.; Boggon, T.J.
Deposited on : 2017-04-04
Resolution : 2.50 Å(reported)

This is a Full wwPDB X-ray Structure Validation Report for a publicly released PDB entry.

We welcome your comments at validation@mail.wwpdb.org

A user guide is available at

<https://www.wwpdb.org/validation/2017/XrayValidationReportHelp>

with specific help available everywhere you see the ⓘ symbol.

The types of validation reports are described at

<http://www.wwpdb.org/validation/2017/FAQs#types>.

The following versions of software and data (see [references ⓘ](#)) were used in the production of this report:

MolProbity : 4.02b-467
Mogul : 1.8.5 (274361), CSD as541be (2020)
Xtriage (Phenix) : 1.13
EDS : 2.35.1
buster-report : 1.1.7 (2018)
Percentile statistics : 20191225.v01 (using entries in the PDB archive December 25th 2019)
Refmac : 5.8.0158
CCP4 : 7.0.044 (Gargrove)
Ideal geometry (proteins) : Engh & Huber (2001)
Ideal geometry (DNA, RNA) : Parkinson et al. (1996)
Validation Pipeline (wwPDB-VP) : 2.35.1

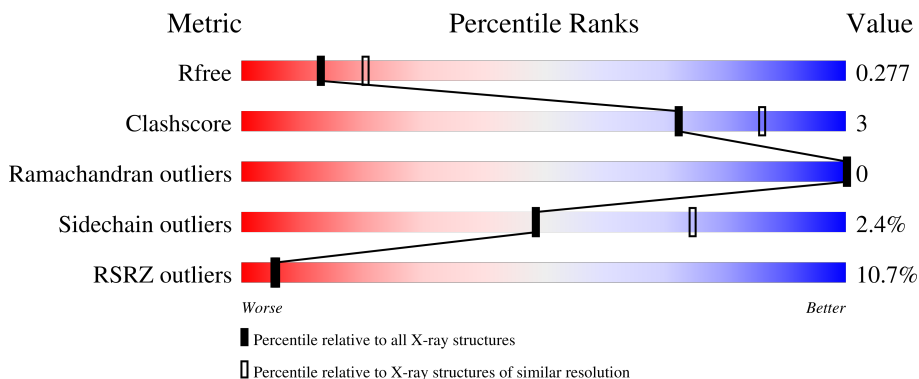
1 Overall quality at a glance

The following experimental techniques were used to determine the structure:

X-RAY DIFFRACTION

The reported resolution of this entry is 2.50 Å.

Percentile scores (ranging between 0-100) for global validation metrics of the entry are shown in the following graphic. The table shows the number of entries on which the scores are based.



Metric	Whole archive (#Entries)	Similar resolution (#Entries, resolution range(Å))
R_{free}	130704	4661 (2.50-2.50)
Clashscore	141614	5346 (2.50-2.50)
Ramachandran outliers	138981	5231 (2.50-2.50)
Sidechain outliers	138945	5233 (2.50-2.50)
RSRZ outliers	127900	4559 (2.50-2.50)

The table below summarises the geometric issues observed across the polymeric chains and their fit to the electron density. The red, orange, yellow and green segments of the lower bar indicate the fraction of residues that contain outliers for ≥ 3 , 2, 1 and 0 types of geometric quality criteria respectively. A grey segment represents the fraction of residues that are not modelled. The numeric value for each fraction is indicated below the corresponding segment, with a dot representing fractions $\leq 5\%$. The upper red bar (where present) indicates the fraction of residues that have poor fit to the electron density. The numeric value is given above the bar.

Mol	Chain	Length	Quality of chain
1	A	319	

2 Entry composition

There are 2 unique types of molecules in this entry. The entry contains 2330 atoms, of which 0 are hydrogens and 0 are deuteriums.

In the tables below, the ZeroOcc column contains the number of atoms modelled with zero occupancy, the AltConf column contains the number of residues with at least one atom in alternate conformation and the Trace column contains the number of residues modelled with at most 2 atoms.

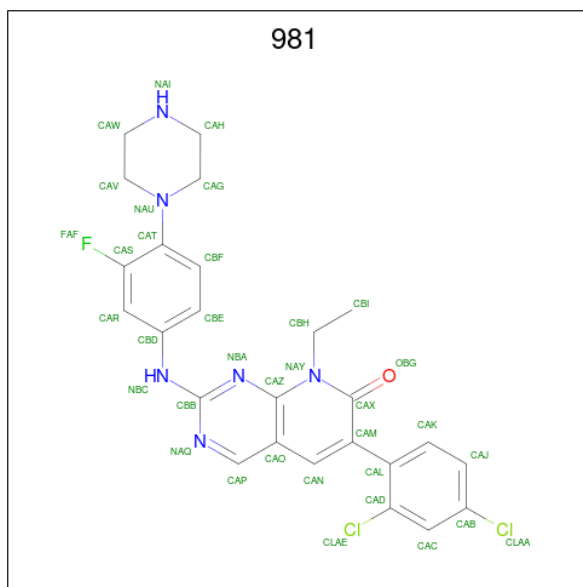
- Molecule 1 is a protein called Serine/threonine-protein kinase PAK 4.

Mol	Chain	Residues	Atoms						ZeroOcc	AltConf	Trace
			Total	C	N	O	P	S			
1	A	290	2295	1462	405	413	1	14	0	0	0

There are 13 discrepancies between the modelled and reference sequences:

Chain	Residue	Modelled	Actual	Comment	Reference
A	273	GLY	-	expression tag	UNP O96013
A	274	ALA	-	expression tag	UNP O96013
A	275	ARG	-	expression tag	UNP O96013
A	276	ALA	-	expression tag	UNP O96013
A	277	ARG	-	expression tag	UNP O96013
A	278	GLN	-	expression tag	UNP O96013
A	279	GLU	-	expression tag	UNP O96013
A	280	ASN	-	expression tag	UNP O96013
A	281	GLY	-	expression tag	UNP O96013
A	282	MET	-	expression tag	UNP O96013
A	283	PRO	-	expression tag	UNP O96013
A	284	GLU	-	expression tag	UNP O96013
A	285	LYS	-	expression tag	UNP O96013

- Molecule 2 is 6-(2,4-dichlorophenyl)-8-ethyl-2-[[3-fluoro-4-(piperazin-1-yl)phenyl]amino]pyrido[2,3-d]pyrimidin-7(8H)-one (three-letter code: 981) (formula: C₂₅H₂₃Cl₂FN₆O).

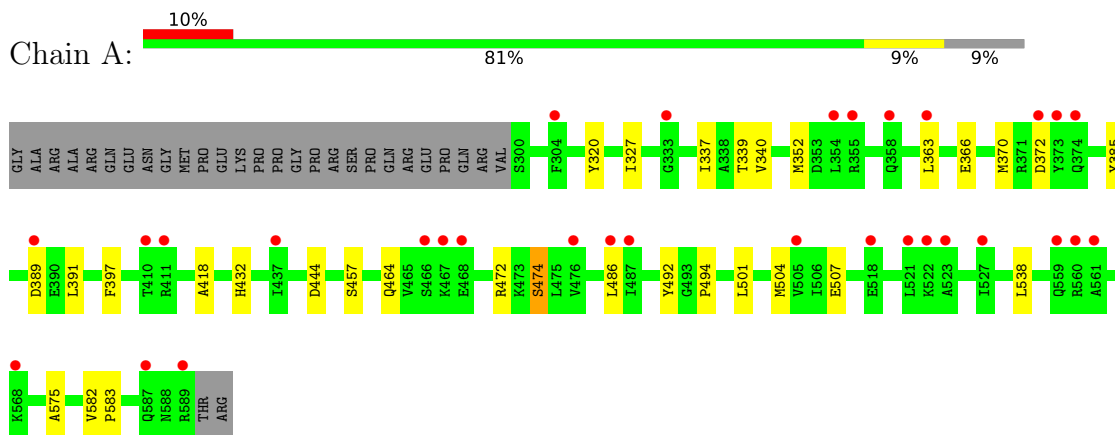


Mol	Chain	Residues	Atoms					ZeroOcc	AltConf	
			Total	C	Cl	F	N			O
2	A	1	35	25	2	1	6	1	0	0

3 Residue-property plots [i](#)

These plots are drawn for all protein, RNA, DNA and oligosaccharide chains in the entry. The first graphic for a chain summarises the proportions of the various outlier classes displayed in the second graphic. The second graphic shows the sequence view annotated by issues in geometry and electron density. Residues are color-coded according to the number of geometric quality criteria for which they contain at least one outlier: green = 0, yellow = 1, orange = 2 and red = 3 or more. A red dot above a residue indicates a poor fit to the electron density ($RSRZ > 2$). Stretches of 2 or more consecutive residues without any outlier are shown as a green connector. Residues present in the sample, but not in the model, are shown in grey.

- Molecule 1: Serine/threonine-protein kinase PAK 4



4 Data and refinement statistics

Property	Value	Source
Space group	P 41 21 2	Depositor
Cell constants a, b, c, α , β , γ	62.95Å 62.95Å 183.51Å 90.00° 90.00° 90.00°	Depositor
Resolution (Å)	50.00 – 2.50 43.87 – 2.50	Depositor EDS
% Data completeness (in resolution range)	97.8 (50.00-2.50) 97.9 (43.87-2.50)	Depositor EDS
R_{merge}	(Not available)	Depositor
R_{sym}	(Not available)	Depositor
$\langle I/\sigma(I) \rangle$ ¹	2.06 (at 2.51Å)	Xtrriage
Refinement program	REFMAC 5.8.0158	Depositor
R, R_{free}	0.228 , 0.276 0.230 , 0.277	Depositor DCC
R_{free} test set	704 reflections (5.32%)	wwPDB-VP
Wilson B-factor (Å ²)	89.8	Xtrriage
Anisotropy	0.413	Xtrriage
Bulk solvent k_{sol} (e/Å ³), B_{sol} (Å ²)	0.32 , 81.8	EDS
L-test for twinning ²	$\langle L \rangle = 0.49$, $\langle L^2 \rangle = 0.32$	Xtrriage
Estimated twinning fraction	No twinning to report.	Xtrriage
F_o, F_c correlation	0.96	EDS
Total number of atoms	2330	wwPDB-VP
Average B, all atoms (Å ²)	117.0	wwPDB-VP

Xtrriage's analysis on translational NCS is as follows: *The largest off-origin peak in the Patterson function is 8.23% of the height of the origin peak. No significant pseudotranslation is detected.*

¹Intensities estimated from amplitudes.

²Theoretical values of $\langle |L| \rangle$, $\langle L^2 \rangle$ for acentric reflections are 0.5, 0.333 respectively for untwinned datasets, and 0.375, 0.2 for perfectly twinned datasets.

5 Model quality [i](#)

5.1 Standard geometry [i](#)

Bond lengths and bond angles in the following residue types are not validated in this section: SEP, 981

The Z score for a bond length (or angle) is the number of standard deviations the observed value is removed from the expected value. A bond length (or angle) with $|Z| > 5$ is considered an outlier worth inspection. RMSZ is the root-mean-square of all Z scores of the bond lengths (or angles).

Mol	Chain	Bond lengths		Bond angles	
		RMSZ	# Z >5	RMSZ	# Z >5
1	A	0.64	0/2332	0.83	0/3157

There are no bond length outliers.

There are no bond angle outliers.

There are no chirality outliers.

There are no planarity outliers.

5.2 Too-close contacts [i](#)

In the following table, the Non-H and H(model) columns list the number of non-hydrogen atoms and hydrogen atoms in the chain respectively. The H(added) column lists the number of hydrogen atoms added and optimized by MolProbity. The Clashes column lists the number of clashes within the asymmetric unit, whereas Symm-Clashes lists symmetry-related clashes.

Mol	Chain	Non-H	H(model)	H(added)	Clashes	Symm-Clashes
1	A	2295	0	2351	16	0
2	A	35	0	0	0	0
All	All	2330	0	2351	16	0

The all-atom clashscore is defined as the number of clashes found per 1000 atoms (including hydrogen atoms). The all-atom clashscore for this structure is 3.

All (16) close contacts within the same asymmetric unit are listed below, sorted by their clash magnitude.

Atom-1	Atom-2	Interatomic distance (Å)	Clash overlap (Å)
1:A:363:LEU:HD11	1:A:391:LEU:HD23	1.82	0.61
1:A:464:GLN:O	1:A:472:ARG:NH2	2.37	0.56

Continued on next page...

Continued from previous page...

Atom-1	Atom-2	Interatomic distance (Å)	Clash overlap (Å)
1:A:472:ARG:HD2	1:A:474:SEP:O2P	2.07	0.55
1:A:337:ILE:HD11	1:A:397:PHE:CE1	2.43	0.53
1:A:486:LEU:HD13	1:A:492:TYR:CE1	2.45	0.52
1:A:432:HIS:CE1	1:A:494:PRO:O	2.67	0.48
1:A:327:ILE:HD11	1:A:337:ILE:HG13	1.96	0.47
1:A:418:ALA:HB3	1:A:575:ALA:HA	1.97	0.47
1:A:504:MET:O	1:A:507:GLU:HB2	2.18	0.45
1:A:320:TYR:HD1	1:A:340:VAL:HG13	1.82	0.44
1:A:366:GLU:O	1:A:370:MET:HB2	2.19	0.42
1:A:352:MET:SD	1:A:363:LEU:HD13	2.58	0.42
1:A:501:LEU:O	1:A:504:MET:N	2.52	0.42
1:A:385:TYR:O	1:A:391:LEU:HD12	2.19	0.41
1:A:582:VAL:HB	1:A:583:PRO:HD3	2.02	0.41
1:A:337:ILE:HD11	1:A:397:PHE:CZ	2.56	0.41

There are no symmetry-related clashes.

5.3 Torsion angles [i](#)

5.3.1 Protein backbone [i](#)

In the following table, the Percentiles column shows the percent Ramachandran outliers of the chain as a percentile score with respect to all X-ray entries followed by that with respect to entries of similar resolution.

The Analysed column shows the number of residues for which the backbone conformation was analysed, and the total number of residues.

Mol	Chain	Analysed	Favoured	Allowed	Outliers	Percentiles
1	A	287/319 (90%)	260 (91%)	27 (9%)	0	100 100

There are no Ramachandran outliers to report.

5.3.2 Protein sidechains [i](#)

In the following table, the Percentiles column shows the percent sidechain outliers of the chain as a percentile score with respect to all X-ray entries followed by that with respect to entries of similar resolution.

The Analysed column shows the number of residues for which the sidechain conformation was analysed, and the total number of residues.

Mol	Chain	Analysed	Rotameric	Outliers	Percentiles
1	A	252/276 (91%)	246 (98%)	6 (2%)	49 74

All (6) residues with a non-rotameric sidechain are listed below:

Mol	Chain	Res	Type
1	A	339	THR
1	A	372	ASP
1	A	389	ASP
1	A	444	ASP
1	A	457	SER
1	A	538	LEU

Sometimes sidechains can be flipped to improve hydrogen bonding and reduce clashes. All (1) such sidechains are listed below:

Mol	Chain	Res	Type
1	A	357	GLN

5.3.3 RNA [i](#)

There are no RNA molecules in this entry.

5.4 Non-standard residues in protein, DNA, RNA chains [i](#)

1 non-standard protein/DNA/RNA residue is modelled in this entry.

In the following table, the Counts columns list the number of bonds (or angles) for which Mogul statistics could be retrieved, the number of bonds (or angles) that are observed in the model and the number of bonds (or angles) that are defined in the Chemical Component Dictionary. The Link column lists molecule types, if any, to which the group is linked. The Z score for a bond length (or angle) is the number of standard deviations the observed value is removed from the expected value. A bond length (or angle) with $|Z| > 2$ is considered an outlier worth inspection. RMSZ is the root-mean-square of all Z scores of the bond lengths (or angles).

Mol	Type	Chain	Res	Link	Bond lengths			Bond angles		
					Counts	RMSZ	# Z > 2	Counts	RMSZ	# Z > 2
1	SEP	A	474	1	8,9,10	0.81	0	8,12,14	1.77	2 (25%)

In the following table, the Chirals column lists the number of chiral outliers, the number of chiral centers analysed, the number of these observed in the model and the number defined in the Chemical Component Dictionary. Similar counts are reported in the Torsion and Rings columns. '2' means no outliers of that kind were identified.

Mol	Type	Chain	Res	Link	Chirals	Torsions	Rings
1	SEP	A	474	1	-	2/5/8/10	-

There are no bond length outliers.

All (2) bond angle outliers are listed below:

Mol	Chain	Res	Type	Atoms	Z	Observed(°)	Ideal(°)
1	A	474	SEP	OG-CB-CA	2.93	111.00	108.14
1	A	474	SEP	P-OG-CB	2.51	125.20	118.30

There are no chirality outliers.

All (2) torsion outliers are listed below:

Mol	Chain	Res	Type	Atoms
1	A	474	SEP	N-CA-CB-OG
1	A	474	SEP	CB-OG-P-O2P

There are no ring outliers.

1 monomer is involved in 1 short contact:

Mol	Chain	Res	Type	Clashes	Symm-Clashes
1	A	474	SEP	1	0

5.5 Carbohydrates [i](#)

There are no monosaccharides in this entry.

5.6 Ligand geometry [i](#)

1 ligand is modelled in this entry.

In the following table, the Counts columns list the number of bonds (or angles) for which Mogul statistics could be retrieved, the number of bonds (or angles) that are observed in the model and the number of bonds (or angles) that are defined in the Chemical Component Dictionary. The Link column lists molecule types, if any, to which the group is linked. The Z score for a bond length (or angle) is the number of standard deviations the observed value is removed from the expected value. A bond length (or angle) with $|Z| > 2$ is considered an outlier worth inspection. RMSZ is the root-mean-square of all Z scores of the bond lengths (or angles).

Mol	Type	Chain	Res	Link	Bond lengths			Bond angles		
					Counts	RMSZ	# Z > 2	Counts	RMSZ	# Z > 2
2	981	A	601	-	39,39,39	2.17	9 (23%)	52,56,56	3.54	24 (46%)

In the following table, the Chirals column lists the number of chiral outliers, the number of chiral centers analysed, the number of these observed in the model and the number defined in the Chemical Component Dictionary. Similar counts are reported in the Torsion and Rings columns. '-' means no outliers of that kind were identified.

Mol	Type	Chain	Res	Link	Chirals	Torsions	Rings
2	981	A	601	-	-	5/14/22/22	0/5/5/5

All (9) bond length outliers are listed below:

Mol	Chain	Res	Type	Atoms	Z	Observed(Å)	Ideal(Å)
2	A	601	981	OBG-CAX	7.66	1.39	1.23
2	A	601	981	CAN-CAM	4.67	1.42	1.35
2	A	601	981	CAM-CAX	4.34	1.53	1.46
2	A	601	981	CBB-NBC	4.24	1.45	1.36
2	A	601	981	CAZ-NAY	3.43	1.43	1.39
2	A	601	981	CBD-NBC	2.66	1.46	1.40
2	A	601	981	CAT-NAU	2.65	1.47	1.41
2	A	601	981	CAX-NAY	2.32	1.42	1.38
2	A	601	981	CAD-CLAE	2.10	1.78	1.73

All (24) bond angle outliers are listed below:

Mol	Chain	Res	Type	Atoms	Z	Observed(°)	Ideal(°)
2	A	601	981	CBH-NAY-CAX	13.21	125.17	116.56
2	A	601	981	NAQ-CBB-NBA	-7.92	119.05	126.55
2	A	601	981	CAO-CAN-CAM	-6.41	114.68	122.49
2	A	601	981	CAP-CAO-CAZ	6.08	120.41	114.50
2	A	601	981	OBG-CAX-CAM	-5.70	118.02	125.72
2	A	601	981	CAO-CAZ-NAY	5.15	123.70	119.45
2	A	601	981	CAC-CAD-CAL	-5.14	117.78	121.58
2	A	601	981	CAL-CAD-CLAE	5.11	128.55	121.00
2	A	601	981	FAF-CAS-CAT	4.81	122.80	118.42
2	A	601	981	CAC-CAB-CLAA	-4.29	113.78	119.15
2	A	601	981	CAK-CAL-CAD	4.21	122.72	117.78
2	A	601	981	CAJ-CAB-CLAA	3.90	125.44	119.35
2	A	601	981	CAL-CAM-CAN	-3.72	119.08	122.69
2	A	601	981	CAN-CAM-CAX	3.46	122.17	118.87
2	A	601	981	CAP-CAO-CAN	-3.32	116.30	122.46
2	A	601	981	CAW-NAI-CAH	3.31	119.87	110.34
2	A	601	981	CAO-CAZ-NBA	-3.26	117.00	122.91
2	A	601	981	CAC-CAD-CLAE	-3.00	113.64	118.49
2	A	601	981	CBB-NBA-CAZ	2.81	124.05	114.34
2	A	601	981	CAW-CAV-NAU	-2.78	104.47	110.48

Continued on next page...

Continued from previous page...

Mol	Chain	Res	Type	Atoms	Z	Observed(°)	Ideal(°)
2	A	601	981	CAO-CAP-NAQ	-2.56	120.14	123.70
2	A	601	981	CAH-CAG-NAU	2.37	115.62	110.48
2	A	601	981	CAP-NAQ-CBB	2.29	119.33	115.88
2	A	601	981	CAV-NAU-CAG	2.26	116.51	111.52

There are no chirality outliers.

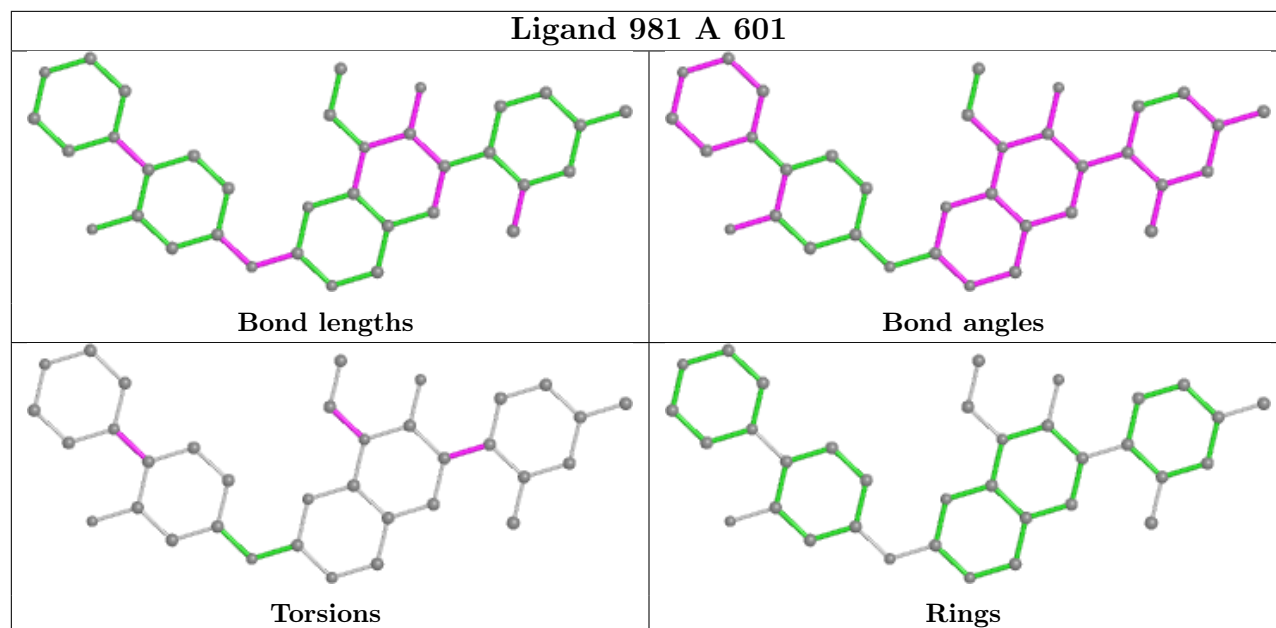
All (5) torsion outliers are listed below:

Mol	Chain	Res	Type	Atoms
2	A	601	981	CBI-CBH-NAY-CAX
2	A	601	981	CAS-CAT-NAU-CAG
2	A	601	981	CBI-CBH-NAY-CAZ
2	A	601	981	CAK-CAL-CAM-CAX
2	A	601	981	CBF-CAT-NAU-CAG

There are no ring outliers.

No monomer is involved in short contacts.

The following is a two-dimensional graphical depiction of Mogul quality analysis of bond lengths, bond angles, torsion angles, and ring geometry for all instances of the Ligand of Interest. In addition, ligands with molecular weight > 250 and outliers as shown on the validation Tables will also be included. For torsion angles, if less than 5% of the Mogul distribution of torsion angles is within 10 degrees of the torsion angle in question, then that torsion angle is considered an outlier. Any bond that is central to one or more torsion angles identified as an outlier by Mogul will be highlighted in the graph. For rings, the root-mean-square deviation (RMSD) between the ring in question and similar rings identified by Mogul is calculated over all ring torsion angles. If the average RMSD is greater than 60 degrees and the minimal RMSD between the ring in question and any Mogul-identified rings is also greater than 60 degrees, then that ring is considered an outlier. The outliers are highlighted in purple. The color gray indicates Mogul did not find sufficient equivalents in the CSD to analyse the geometry.



5.7 Other polymers [i](#)

There are no such residues in this entry.

5.8 Polymer linkage issues [i](#)

There are no chain breaks in this entry.

6 Fit of model and data

6.1 Protein, DNA and RNA chains

In the following table, the column labelled ‘#RSRZ> 2’ contains the number (and percentage) of RSRZ outliers, followed by percent RSRZ outliers for the chain as percentile scores relative to all X-ray entries and entries of similar resolution. The OWAB column contains the minimum, median, 95th percentile and maximum values of the occupancy-weighted average B-factor per residue. The column labelled ‘Q< 0.9’ lists the number of (and percentage) of residues with an average occupancy less than 0.9.

Mol	Chain	Analysed	<RSRZ>	#RSRZ>2	OWAB(Å ²)	Q<0.9
1	A	289/319 (90%)	0.69	31 (10%) 6 5	74, 110, 170, 205	0

All (31) RSRZ outliers are listed below:

Mol	Chain	Res	Type	RSRZ
1	A	468	GLU	5.6
1	A	354	LEU	5.2
1	A	521	LEU	4.7
1	A	527	ILE	4.5
1	A	304	PHE	4.4
1	A	561	ALA	3.9
1	A	518	GLU	3.6
1	A	476	VAL	3.5
1	A	467	LYS	3.5
1	A	355	ARG	3.4
1	A	373	TYR	3.2
1	A	389	ASP	3.2
1	A	522	LYS	3.1
1	A	410	THR	2.8
1	A	411	ARG	2.7
1	A	559	GLN	2.6
1	A	437	ILE	2.5
1	A	587	GLN	2.4
1	A	374	GLN	2.4
1	A	589	ARG	2.4
1	A	487	ILE	2.4
1	A	466	SER	2.4
1	A	486	LEU	2.4
1	A	358	GLN	2.3
1	A	523	ALA	2.3
1	A	568	LYS	2.2
1	A	333	GLY	2.2

Continued on next page...

Continued from previous page...

Mol	Chain	Res	Type	RSRZ
1	A	560	ARG	2.1
1	A	372	ASP	2.1
1	A	363	LEU	2.0
1	A	505	VAL	2.0

6.2 Non-standard residues in protein, DNA, RNA chains [i](#)

In the following table, the Atoms column lists the number of modelled atoms in the group and the number defined in the chemical component dictionary. The B-factors column lists the minimum, median, 95th percentile and maximum values of B factors of atoms in the group. The column labelled 'Q< 0.9' lists the number of atoms with occupancy less than 0.9.

Mol	Type	Chain	Res	Atoms	RSCC	RSR	B-factors(Å ²)	Q<0.9
1	SEP	A	474	10/11	0.87	0.11	102,116,136,143	0

6.3 Carbohydrates [i](#)

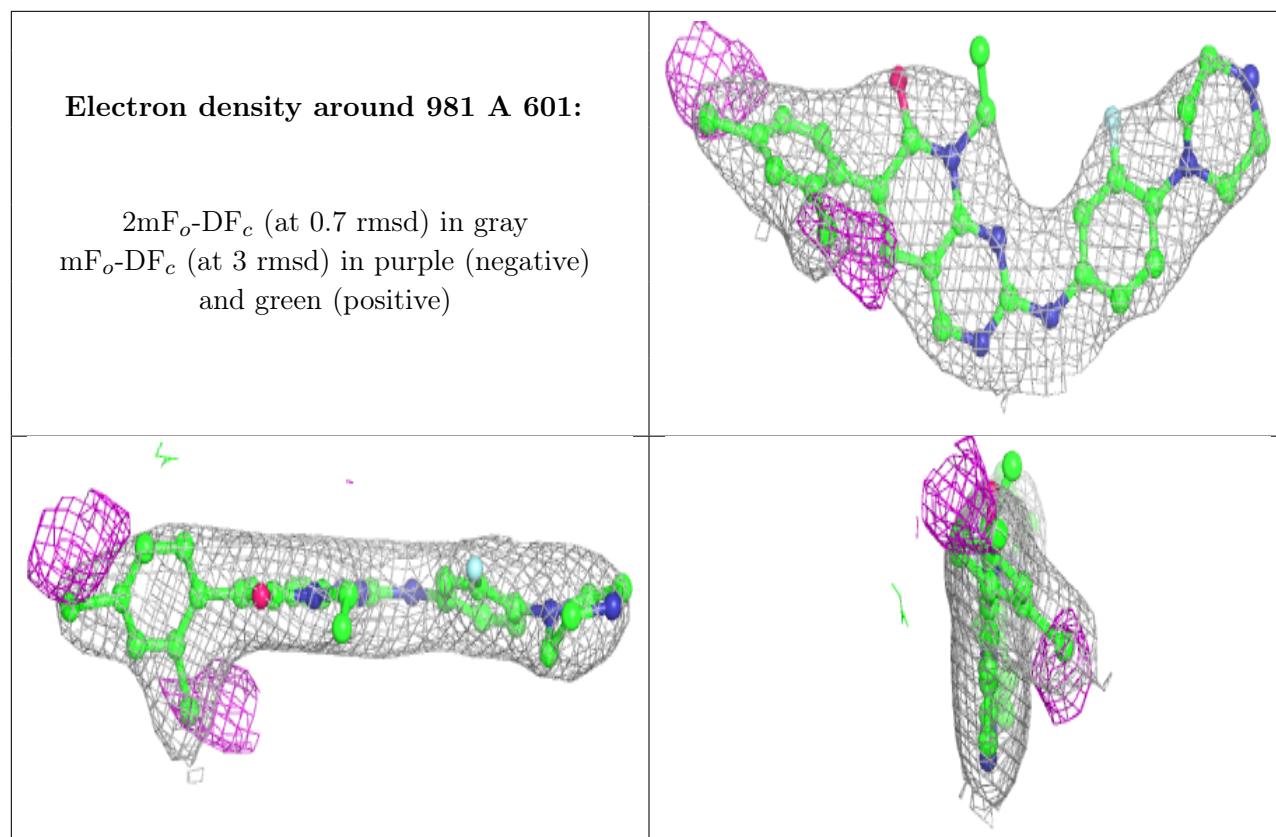
There are no monosaccharides in this entry.

6.4 Ligands [i](#)

In the following table, the Atoms column lists the number of modelled atoms in the group and the number defined in the chemical component dictionary. The B-factors column lists the minimum, median, 95th percentile and maximum values of B factors of atoms in the group. The column labelled 'Q< 0.9' lists the number of atoms with occupancy less than 0.9.

Mol	Type	Chain	Res	Atoms	RSCC	RSR	B-factors(Å ²)	Q<0.9
2	981	A	601	35/35	0.93	0.17	63,90,114,128	0

The following is a graphical depiction of the model fit to experimental electron density of all instances of the Ligand of Interest. In addition, ligands with molecular weight > 250 and outliers as shown on the geometry validation Tables will also be included. Each fit is shown from different orientation to approximate a three-dimensional view.



6.5 Other polymers [i](#)

There are no such residues in this entry.