



Full wwPDB X-ray Structure Validation Report ⓘ

Jun 18, 2024 – 09:12 AM EDT

PDB ID : 5S8T
Title : PanDDA analysis group deposition – Crystal Structure of PHIP in complex with Z198194396 synthetic derivative
Authors : Grosjean, H.; Aimon, A.; Hassel-Hart, S.; Krojer, T.; Talon, R.; Douangamath, A.; Koekemoer, L.; Biggin, P.C.; Spencer, J.; von Delft, F.
Deposited on : 2021-01-22
Resolution : 1.22 Å(reported)

This is a Full wwPDB X-ray Structure Validation Report for a publicly released PDB entry.

We welcome your comments at validation@mail.wwpdb.org

A user guide is available at

<https://www.wwpdb.org/validation/2017/XrayValidationReportHelp>

with specific help available everywhere you see the ⓘ symbol.

The types of validation reports are described at

<http://www.wwpdb.org/validation/2017/FAQs#types>.

The following versions of software and data (see [references ⓘ](#)) were used in the production of this report:

MolProbity : 4.02b-467
Mogul : 1.8.5 (274361), CSD as541be (2020)
Xtrriage (Phenix) : 1.13
EDS : 2.37.1
buster-report : 1.1.7 (2018)
Percentile statistics : 20191225.v01 (using entries in the PDB archive December 25th 2019)
Refmac : 5.8.0158
CCP4 : 7.0.044 (Gargrove)
Ideal geometry (proteins) : Engh & Huber (2001)
Ideal geometry (DNA, RNA) : Parkinson et al. (1996)
Validation Pipeline (wwPDB-VP) : 2.37.1

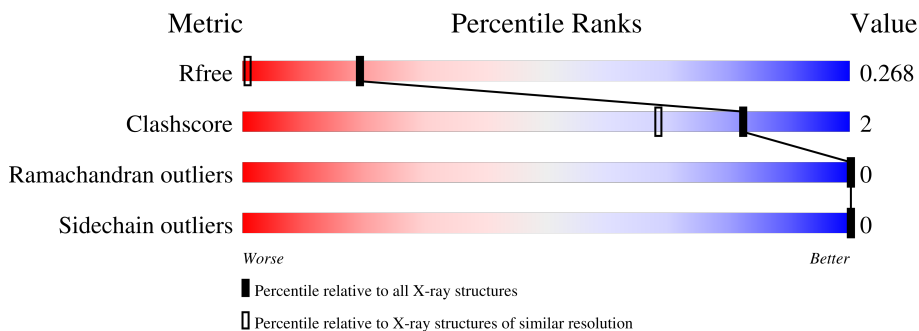
1 Overall quality at a glance

The following experimental techniques were used to determine the structure:

X-RAY DIFFRACTION


The reported resolution of this entry is 1.22 Å.

Percentile scores (ranging between 0-100) for global validation metrics of the entry are shown in the following graphic. The table shows the number of entries on which the scores are based.



Metric	Whole archive (#Entries)	Similar resolution (#Entries, resolution range(Å))
R_{free}	130704	1232 (1.24-1.20)
Clashscore	141614	1294 (1.24-1.20)
Ramachandran outliers	138981	1251 (1.24-1.20)
Sidechain outliers	138945	1250 (1.24-1.20)

The table below summarises the geometric issues observed across the polymeric chains and their fit to the electron density. The red, orange, yellow and green segments of the lower bar indicate the fraction of residues that contain outliers for ≥ 3 , 2, 1 and 0 types of geometric quality criteria respectively. A grey segment represents the fraction of residues that are not modelled. The numeric value for each fraction is indicated below the corresponding segment, with a dot representing fractions $\leq 5\%$

Mol	Chain	Length	Quality of chain
1	A	149	 76% • 20%

2 Entry composition [i](#)

There are 3 unique types of molecules in this entry. The entry contains 1222 atoms, of which 0 are hydrogens and 0 are deuteriums.

In the tables below, the ZeroOcc column contains the number of atoms modelled with zero occupancy, the AltConf column contains the number of residues with at least one atom in alternate conformation and the Trace column contains the number of residues modelled with at most 2 atoms.

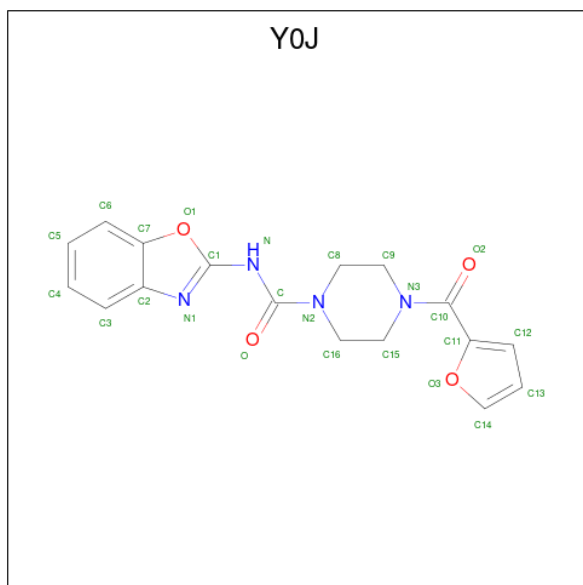
- Molecule 1 is a protein called PH-interacting protein.

Mol	Chain	Residues	Atoms					ZeroOcc	AltConf	Trace
			Total	C	N	O	S			
1	A	119	1010	642	167	194	7	0	3	0

There are 23 discrepancies between the modelled and reference sequences:

Chain	Residue	Modelled	Actual	Comment	Reference
A	1292	MET	-	initiating methionine	UNP Q8WWQ0
A	1293	HIS	-	expression tag	UNP Q8WWQ0
A	1294	HIS	-	expression tag	UNP Q8WWQ0
A	1295	HIS	-	expression tag	UNP Q8WWQ0
A	1296	HIS	-	expression tag	UNP Q8WWQ0
A	1297	HIS	-	expression tag	UNP Q8WWQ0
A	1298	HIS	-	expression tag	UNP Q8WWQ0
A	1299	SER	-	expression tag	UNP Q8WWQ0
A	1300	SER	-	expression tag	UNP Q8WWQ0
A	1301	GLY	-	expression tag	UNP Q8WWQ0
A	1302	VAL	-	expression tag	UNP Q8WWQ0
A	1303	ASP	-	expression tag	UNP Q8WWQ0
A	1304	LEU	-	expression tag	UNP Q8WWQ0
A	1305	GLY	-	expression tag	UNP Q8WWQ0
A	1306	THR	-	expression tag	UNP Q8WWQ0
A	1307	GLU	-	expression tag	UNP Q8WWQ0
A	1308	ASN	-	expression tag	UNP Q8WWQ0
A	1309	LEU	-	expression tag	UNP Q8WWQ0
A	1310	TYR	-	expression tag	UNP Q8WWQ0
A	1311	PHE	-	expression tag	UNP Q8WWQ0
A	1312	GLN	-	expression tag	UNP Q8WWQ0
A	1313	SER	-	expression tag	UNP Q8WWQ0
A	1314	MET	-	expression tag	UNP Q8WWQ0

- Molecule 2 is N-(1,3-benzoxazol-2-yl)-4-(furan-2-carbonyl)piperazine-1-carboxamide (three-letter code: Y0J) (formula: C₁₇H₁₆N₄O₄).



Mol	Chain	Residues	Atoms				ZeroOcc	AltConf
			Total	C	N	O		
2	A	1	25	17	4	4	0	0


- Molecule 3 is water.

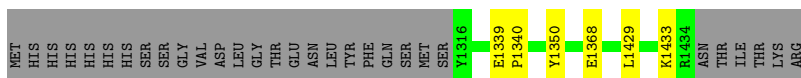
Mol	Chain	Residues	Atoms		ZeroOcc	AltConf
			Total	O		
3	A	187	187	187	0	0

3 Residue-property plots [i](#)

These plots are drawn for all protein, RNA, DNA and oligosaccharide chains in the entry. The first graphic for a chain summarises the proportions of the various outlier classes displayed in the second graphic. The second graphic shows the sequence view annotated by issues in geometry. Residues are color-coded according to the number of geometric quality criteria for which they contain at least one outlier: green = 0, yellow = 1, orange = 2 and red = 3 or more. Stretches of 2 or more consecutive residues without any outlier are shown as a green connector. Residues present in the sample, but not in the model, are shown in grey.

- Molecule 1: PH-interacting protein

Chain A:  76% 20%



4 Data and refinement statistics

Property	Value	Source
Space group	C 1 2 1	Depositor
Cell constants a, b, c, α , β , γ	81.40Å 27.17Å 55.99Å 90.00° 100.20° 90.00°	Depositor
Resolution (Å)	55.11 – 1.22 55.11 – 1.22	Depositor EDS
% Data completeness (in resolution range)	86.9 (55.11-1.22) 87.0 (55.11-1.22)	Depositor EDS
R_{merge}	0.03	Depositor
R_{sym}	(Not available)	Depositor
$\langle I/\sigma(I) \rangle$ ¹	2.21 (at 1.22Å)	Xtrriage
Refinement program	REFMAC 5.8.0267	Depositor
R, R_{free}	0.177 , 0.205 0.245 , 0.268	Depositor DCC
R_{free} test set	1593 reflections (5.04%)	wwPDB-VP
Wilson B-factor (Å ²)	15.0	Xtrriage
Anisotropy	0.077	Xtrriage
Bulk solvent k_{sol} (e/Å ³), B_{sol} (Å ²)	0.35 , 46.7	EDS
L-test for twinning ²	$\langle L \rangle = 0.49$, $\langle L^2 \rangle = 0.33$	Xtrriage
Estimated twinning fraction	No twinning to report.	Xtrriage
F_o, F_c correlation	0.94	EDS
Total number of atoms	1222	wwPDB-VP
Average B, all atoms (Å ²)	19.0	wwPDB-VP

Xtrriage's analysis on translational NCS is as follows: *The largest off-origin peak in the Patterson function is 14.44% of the height of the origin peak. No significant pseudotranslation is detected.*

¹Intensities estimated from amplitudes.

²Theoretical values of $\langle |L| \rangle$, $\langle L^2 \rangle$ for acentric reflections are 0.5, 0.333 respectively for untwinned datasets, and 0.375, 0.2 for perfectly twinned datasets.

5 Model quality [i](#)

5.1 Standard geometry [i](#)

Bond lengths and bond angles in the following residue types are not validated in this section: Y0J

The Z score for a bond length (or angle) is the number of standard deviations the observed value is removed from the expected value. A bond length (or angle) with $|Z| > 5$ is considered an outlier worth inspection. RMSZ is the root-mean-square of all Z scores of the bond lengths (or angles).

Mol	Chain	Bond lengths		Bond angles	
		RMSZ	# Z >5	RMSZ	# Z >5
1	A	0.80	0/1033	0.84	0/1394

There are no bond length outliers.

There are no bond angle outliers.

There are no chirality outliers.

There are no planarity outliers.

5.2 Too-close contacts [i](#)

In the following table, the Non-H and H(model) columns list the number of non-hydrogen atoms and hydrogen atoms in the chain respectively. The H(added) column lists the number of hydrogen atoms added and optimized by MolProbity. The Clashes column lists the number of clashes within the asymmetric unit, whereas Symm-Clashes lists symmetry-related clashes.

Mol	Chain	Non-H	H(model)	H(added)	Clashes	Symm-Clashes
1	A	1010	0	975	5	0
2	A	25	0	0	1	0
3	A	187	0	0	1	0
All	All	1222	0	975	5	0

The all-atom clashscore is defined as the number of clashes found per 1000 atoms (including hydrogen atoms). The all-atom clashscore for this structure is 2.

All (5) close contacts within the same asymmetric unit are listed below, sorted by their clash magnitude.

Atom-1	Atom-2	Interatomic distance (Å)	Clash overlap (Å)
1:A:1429:LEU:HD22	1:A:1433:LYS:HZ1	1.35	0.87

Continued on next page...

Continued from previous page...

Atom-1	Atom-2	Interatomic distance (Å)	Clash overlap (Å)
1:A:1429:LEU:HD22	1:A:1433:LYS:NZ	2.09	0.66
1:A:1339:GLU:HB3	1:A:1340:PRO:HD3	1.92	0.52
1:A:1368:GLU:HG3	3:A:1716:HOH:O	2.18	0.42
1:A:1350:TYR:CE2	2:A:1501:Y0J:C16	3.04	0.40

There are no symmetry-related clashes.

5.3 Torsion angles [i](#)

5.3.1 Protein backbone [i](#)

In the following table, the Percentiles column shows the percent Ramachandran outliers of the chain as a percentile score with respect to all X-ray entries followed by that with respect to entries of similar resolution.

The Analysed column shows the number of residues for which the backbone conformation was analysed, and the total number of residues.

Mol	Chain	Analysed	Favoured	Allowed	Outliers	Percentiles
1	A	120/149 (80%)	120 (100%)	0	0	100 100

There are no Ramachandran outliers to report.

5.3.2 Protein sidechains [i](#)

In the following table, the Percentiles column shows the percent sidechain outliers of the chain as a percentile score with respect to all X-ray entries followed by that with respect to entries of similar resolution.

The Analysed column shows the number of residues for which the sidechain conformation was analysed, and the total number of residues.

Mol	Chain	Analysed	Rotameric	Outliers	Percentiles
1	A	114/140 (81%)	114 (100%)	0	100 100

There are no protein residues with a non-rotameric sidechain to report.

Sometimes sidechains can be flipped to improve hydrogen bonding and reduce clashes. There are no such sidechains identified.

5.3.3 RNA [i](#)

There are no RNA molecules in this entry.

5.4 Non-standard residues in protein, DNA, RNA chains [i](#)

There are no non-standard protein/DNA/RNA residues in this entry.

5.5 Carbohydrates [i](#)

There are no monosaccharides in this entry.

5.6 Ligand geometry [i](#)

1 ligand is modelled in this entry.

In the following table, the Counts columns list the number of bonds (or angles) for which Mogul statistics could be retrieved, the number of bonds (or angles) that are observed in the model and the number of bonds (or angles) that are defined in the Chemical Component Dictionary. The Link column lists molecule types, if any, to which the group is linked. The Z score for a bond length (or angle) is the number of standard deviations the observed value is removed from the expected value. A bond length (or angle) with $|Z| > 2$ is considered an outlier worth inspection. RMSZ is the root-mean-square of all Z scores of the bond lengths (or angles).

Mol	Type	Chain	Res	Link	Bond lengths			Bond angles		
					Counts	RMSZ	# Z > 2	Counts	RMSZ	# Z > 2
2	Y0J	A	1501	-	21,28,28	2.30	6 (28%)	24,39,39	1.70	6 (25%)

In the following table, the Chirals column lists the number of chiral outliers, the number of chiral centers analysed, the number of these observed in the model and the number defined in the Chemical Component Dictionary. Similar counts are reported in the Torsion and Rings columns. '-' means no outliers of that kind were identified.

Mol	Type	Chain	Res	Link	Chirals	Torsions	Rings
2	Y0J	A	1501	-	-	2/10/26/26	0/4/4/4

All (6) bond length outliers are listed below:

Mol	Chain	Res	Type	Atoms	Z	Observed(Å)	Ideal(Å)
2	A	1501	Y0J	C-N2	7.81	1.51	1.36
2	A	1501	Y0J	C-N	3.50	1.43	1.37
2	A	1501	Y0J	C16-N2	2.81	1.52	1.47

Continued on next page...

Continued from previous page...

Mol	Chain	Res	Type	Atoms	Z	Observed(Å)	Ideal(Å)
2	A	1501	Y0J	C1-N	2.72	1.41	1.36
2	A	1501	Y0J	C11-C10	-2.21	1.46	1.49
2	A	1501	Y0J	C10-N3	2.03	1.39	1.34

All (6) bond angle outliers are listed below:

Mol	Chain	Res	Type	Atoms	Z	Observed(°)	Ideal(°)
2	A	1501	Y0J	C15-C16-N2	3.48	117.90	110.44
2	A	1501	Y0J	C9-C8-N2	3.38	117.69	110.44
2	A	1501	Y0J	O-C-N2	2.35	125.09	121.78
2	A	1501	Y0J	C16-N2-C8	2.28	117.02	112.62
2	A	1501	Y0J	N-C-N2	-2.15	113.42	115.89
2	A	1501	Y0J	C9-N3-C15	-2.04	108.70	112.62

There are no chirality outliers.

All (2) torsion outliers are listed below:

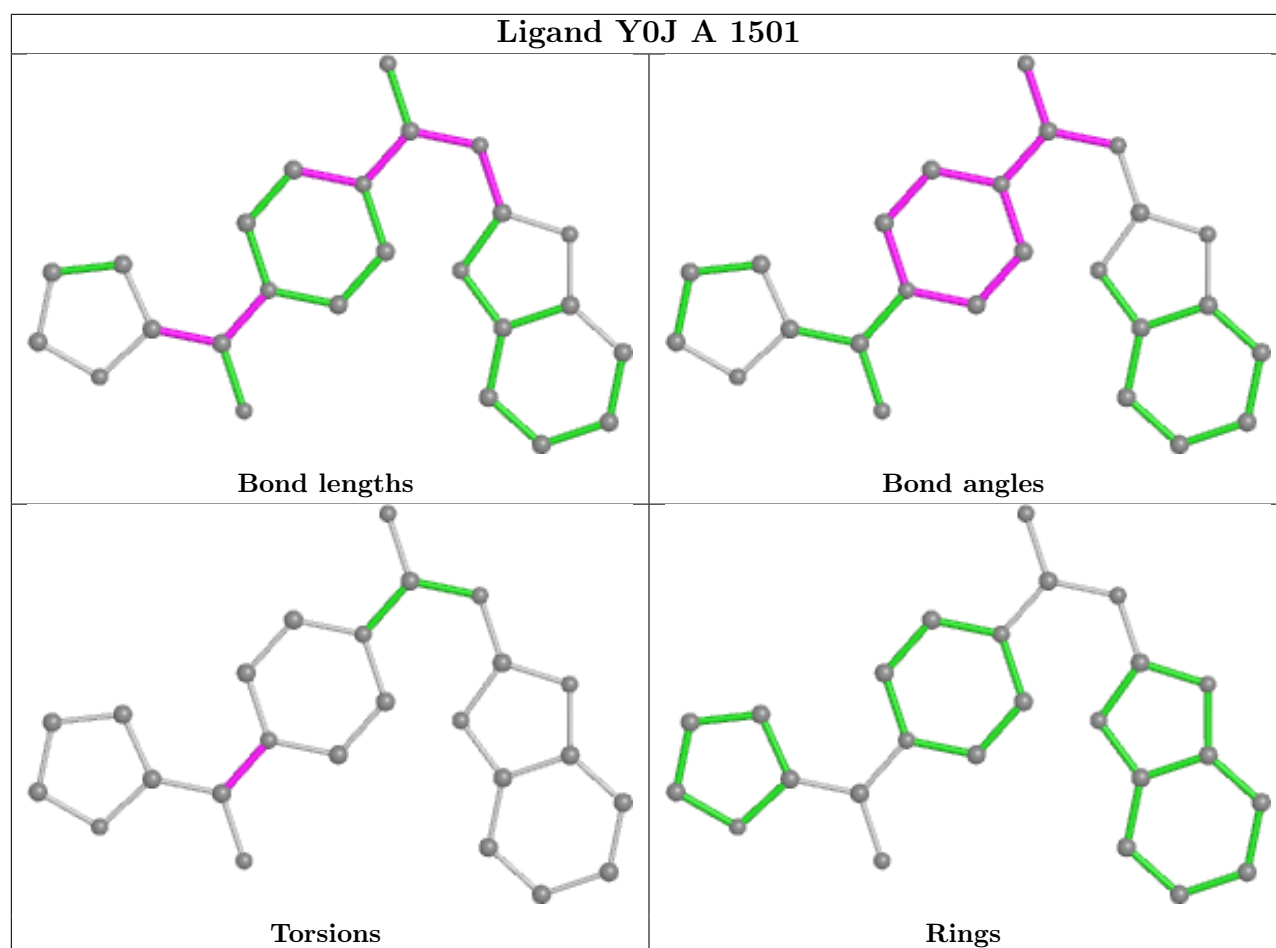
Mol	Chain	Res	Type	Atoms
2	A	1501	Y0J	C11-C10-N3-C15
2	A	1501	Y0J	O2-C10-N3-C15

There are no ring outliers.

1 monomer is involved in 1 short contact:

Mol	Chain	Res	Type	Clashes	Symm-Clashes
2	A	1501	Y0J	1	0

The following is a two-dimensional graphical depiction of Mogul quality analysis of bond lengths, bond angles, torsion angles, and ring geometry for all instances of the Ligand of Interest. In addition, ligands with molecular weight > 250 and outliers as shown on the validation Tables will also be included. For torsion angles, if less than 5% of the Mogul distribution of torsion angles is within 10 degrees of the torsion angle in question, then that torsion angle is considered an outlier. Any bond that is central to one or more torsion angles identified as an outlier by Mogul will be highlighted in the graph. For rings, the root-mean-square deviation (RMSD) between the ring in question and similar rings identified by Mogul is calculated over all ring torsion angles. If the average RMSD is greater than 60 degrees and the minimal RMSD between the ring in question and any Mogul-identified rings is also greater than 60 degrees, then that ring is considered an outlier. The outliers are highlighted in purple. The color gray indicates Mogul did not find sufficient equivalents in the CSD to analyse the geometry.



5.7 Other polymers [i](#)

There are no such residues in this entry.

5.8 Polymer linkage issues [i](#)

There are no chain breaks in this entry.

6 Fit of model and data [i](#)

6.1 Protein, DNA and RNA chains [i](#)

Unable to reproduce the depositors R factor - this section is therefore empty.

6.2 Non-standard residues in protein, DNA, RNA chains [i](#)

Unable to reproduce the depositors R factor - this section is therefore empty.

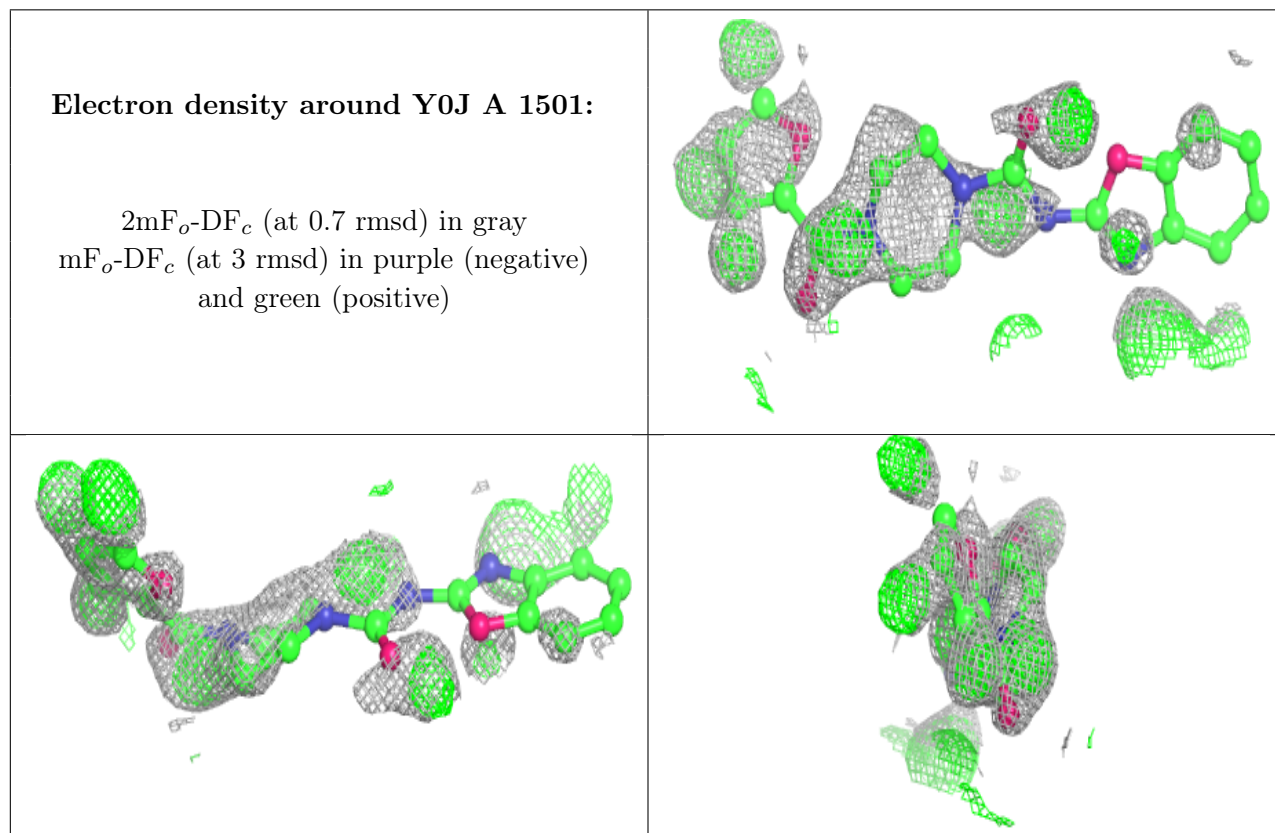
6.3 Carbohydrates [i](#)

Unable to reproduce the depositors R factor - this section is therefore empty.

6.4 Ligands [i](#)

Unable to reproduce the depositors R factor - this section is therefore empty.

The following is a graphical depiction of the model fit to experimental electron density of all instances of the Ligand of Interest. In addition, ligands with molecular weight > 250 and outliers as shown on the geometry validation Tables will also be included. Each fit is shown from different orientation to approximate a three-dimensional view.



6.5 Other polymers

Unable to reproduce the depositors R factor - this section is therefore empty.