



Full wwPDB X-ray Structure Validation Report ⓘ

Feb 28, 2024 – 06:51 AM EST

PDB ID : 5QY2
Title : PanDDA analysis group deposition – Aar2/RNaseH in complex with fragment F2X-Entry A12b
Authors : Weiss, M.S.; Wollenhaupt, J.; Metz, A.; Barthel, T.; Lima, G.M.A.; Heine, A.; Mueller, U.; Klebe, G.
Deposited on : 2020-02-12
Resolution : 1.36 Å(reported)

This is a Full wwPDB X-ray Structure Validation Report for a publicly released PDB entry.

We welcome your comments at validation@mail.wwpdb.org

A user guide is available at

<https://www.wwpdb.org/validation/2017/XrayValidationReportHelp>

with specific help available everywhere you see the ⓘ symbol.

The types of validation reports are described at

<http://www.wwpdb.org/validation/2017/FAQs#types>.

The following versions of software and data (see [references ⓘ](#)) were used in the production of this report:

MolProbity : 4.02b-467
Mogul : 1.8.5 (274361), CSD as541be (2020)
Xtriage (Phenix) : 1.13
EDS : 2.36
buster-report : 1.1.7 (2018)
Percentile statistics : 20191225.v01 (using entries in the PDB archive December 25th 2019)
Refmac : 5.8.0158
CCP4 : 7.0.044 (Gargrove)
Ideal geometry (proteins) : Engh & Huber (2001)
Ideal geometry (DNA, RNA) : Parkinson et al. (1996)
Validation Pipeline (wwPDB-VP) : 2.36

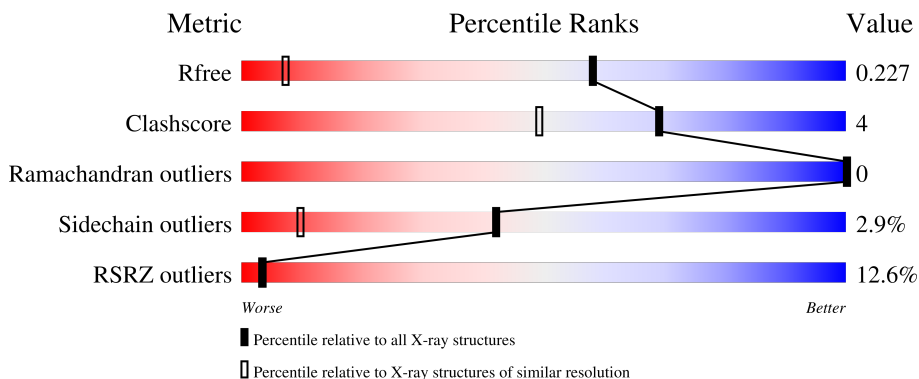
1 Overall quality at a glance

The following experimental techniques were used to determine the structure:

X-RAY DIFFRACTION

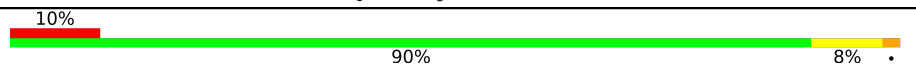
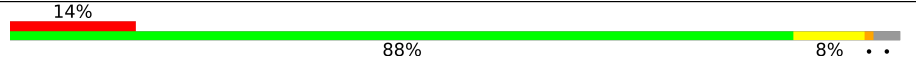
The reported resolution of this entry is 1.36 Å.

Percentile scores (ranging between 0-100) for global validation metrics of the entry are shown in the following graphic. The table shows the number of entries on which the scores are based.



Metric	Whole archive (#Entries)	Similar resolution (#Entries, resolution range(Å))
R_{free}	130704	1509 (1.38-1.34)
Clashscore	141614	1551 (1.38-1.34)
Ramachandran outliers	138981	1530 (1.38-1.34)
Sidechain outliers	138945	1530 (1.38-1.34)
RSRZ outliers	127900	1487 (1.38-1.34)

The table below summarises the geometric issues observed across the polymeric chains and their fit to the electron density. The red, orange, yellow and green segments of the lower bar indicate the fraction of residues that contain outliers for ≥ 3 , 2, 1 and 0 types of geometric quality criteria respectively. A grey segment represents the fraction of residues that are not modelled. The numeric value for each fraction is indicated below the corresponding segment, with a dot representing fractions $\leq 5\%$. The upper red bar (where present) indicates the fraction of residues that have poor fit to the electron density. The numeric value is given above the bar.

Mol	Chain	Length	Quality of chain
1	A	258	
2	B	308	

The following table lists non-polymeric compounds, carbohydrate monomers and non-standard residues in protein, DNA, RNA chains that are outliers for geometric or electron-density-fit criteria:

Mol	Type	Chain	Res	Chirality	Geometry	Clashes	Electron density
4	PGR	A	2305	-	-	X	-

2 Entry composition [i](#)

There are 6 unique types of molecules in this entry. The entry contains 6074 atoms, of which 0 are hydrogens and 0 are deuteriums.

In the tables below, the ZeroOcc column contains the number of atoms modelled with zero occupancy, the AltConf column contains the number of residues with at least one atom in alternate conformation and the Trace column contains the number of residues modelled with at most 2 atoms.

- Molecule 1 is a protein called Pre-mRNA-splicing factor 8.

Mol	Chain	Residues	Atoms					ZeroOcc	AltConf	Trace
			Total	C	N	O	S			
1	A	257	2537	1598	428	492	19	0	13	0

There are 3 discrepancies between the modelled and reference sequences:

Chain	Residue	Modelled	Actual	Comment	Reference
A	1833	GLY	-	expression tag	UNP P33334
A	1834	ALA	-	expression tag	UNP P33334
A	1835	MET	-	expression tag	UNP P33334

- Molecule 2 is a protein called A1 cistron-splicing factor AAR2.

Mol	Chain	Residues	Atoms					ZeroOcc	AltConf	Trace
			Total	C	N	O	S			
2	B	300	3294	2128	528	610	28	40	18	0

There are 9 discrepancies between the modelled and reference sequences:

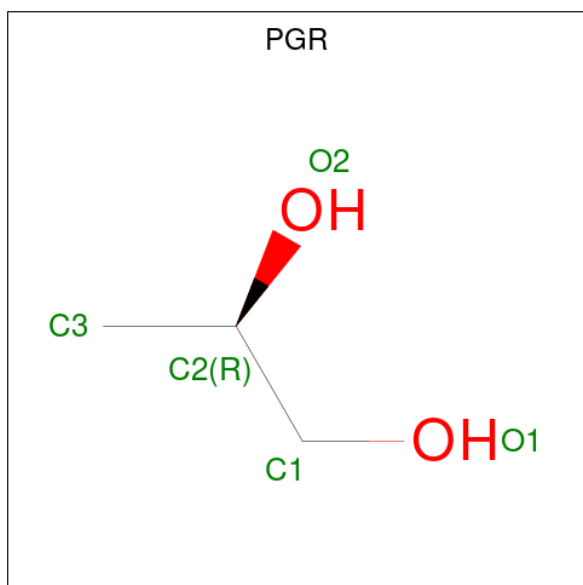
Chain	Residue	Modelled	Actual	Comment	Reference
B	-3	GLY	-	expression tag	UNP P32357
B	-2	ALA	-	expression tag	UNP P32357
B	-1	MET	-	expression tag	UNP P32357
B	0	ALA	-	expression tag	UNP P32357
B	166	SER	-	linker	UNP P32357
B	167	SER	-	linker	UNP P32357
B	168	SER	-	linker	UNP P32357
B	169	SER	-	linker	UNP P32357
B	170	SER	-	linker	UNP P32357

- Molecule 3 is SULFATE ION (three-letter code: SO4) (formula: O₄S).



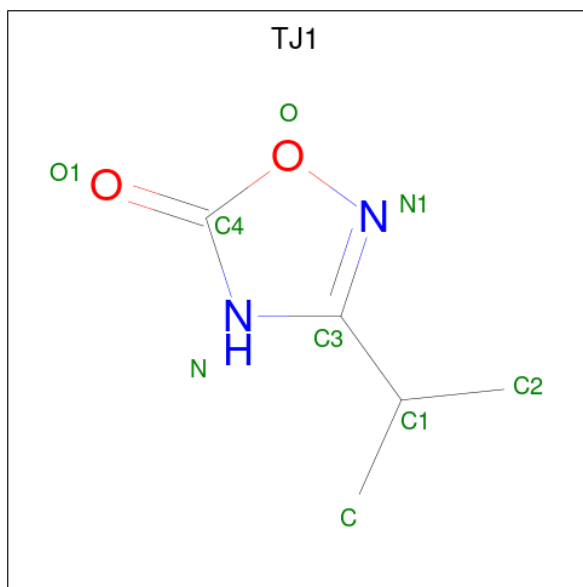
Mol	Chain	Residues	Atoms			ZeroOcc	AltConf
3	A	1	Total	O	S	0	0
			5	4	1		
3	A	1	Total	O	S	0	0
			5	4	1		
3	A	1	Total	O	S	0	0
			5	4	1		
3	A	1	Total	O	S	0	0
			5	4	1		

- Molecule 4 is R-1,2-PROPANEDIOL (three-letter code: PGR) (formula: $C_3H_8O_2$).



Mol	Chain	Residues	Atoms			ZeroOcc	AltConf
4	A	1	Total	C	O	0	0
			5	3	2		
4	A	1	Total	C	O	0	0
			5	3	2		
4	A	1	Total	C	O	0	0
			5	3	2		

- Molecule 5 is 3-(propan-2-yl)-1,2,4-oxadiazol-5(4H)-one (three-letter code: TJ1) (formula: $C_5H_8N_2O_2$) (labeled as "Ligand of Interest" by depositor).



Mol	Chain	Residues	Atoms				ZeroOcc	AltConf
5	B	1	Total	C	N	O	0	1
			27	15	6	6		

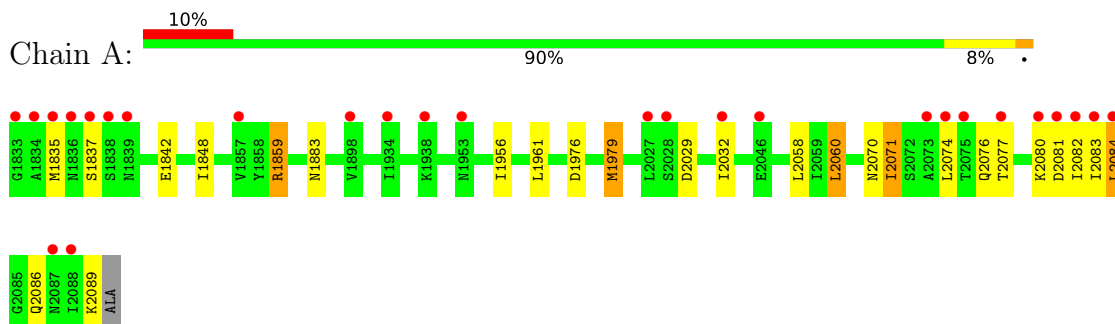
- Molecule 6 is water.

Mol	Chain	Residues	Atoms		ZeroOcc	AltConf
6	A	91	Total	O	0	0
			91	91		
6	B	90	Total	O	0	0
			90	90		

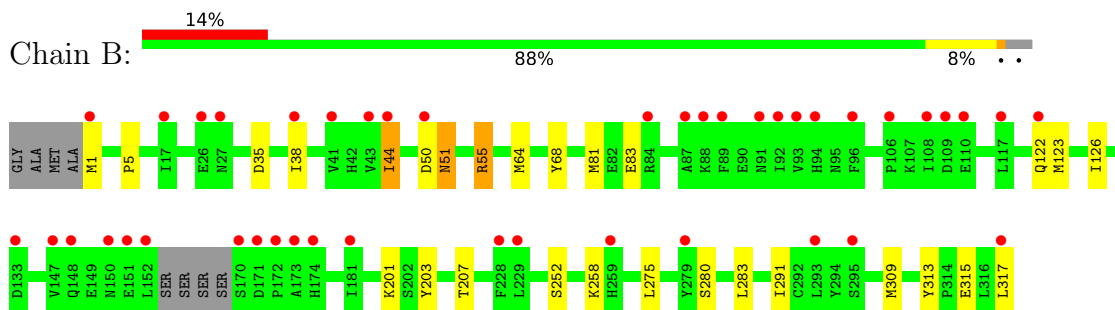
3 Residue-property plots [i](#)

These plots are drawn for all protein, RNA, DNA and oligosaccharide chains in the entry. The first graphic for a chain summarises the proportions of the various outlier classes displayed in the second graphic. The second graphic shows the sequence view annotated by issues in geometry and electron density. Residues are color-coded according to the number of geometric quality criteria for which they contain at least one outlier: green = 0, yellow = 1, orange = 2 and red = 3 or more. A red dot above a residue indicates a poor fit to the electron density ($RSRZ > 2$). Stretches of 2 or more consecutive residues without any outlier are shown as a green connector. Residues present in the sample, but not in the model, are shown in grey.

- Molecule 1: Pre-mRNA-splicing factor 8



- Molecule 2: A1 cistron-splicing factor AAR2



4 Data and refinement statistics

Property	Value	Source
Space group	C 1 2 1	Depositor
Cell constants a, b, c, α , β , γ	88.52Å 82.03Å 93.96Å 90.00° 108.83° 90.00°	Depositor
Resolution (Å)	43.77 – 1.36 43.73 – 1.36	Depositor EDS
% Data completeness (in resolution range)	97.9 (43.77-1.36) 98.0 (43.73-1.36)	Depositor EDS
R_{merge}	0.08	Depositor
R_{sym}	(Not available)	Depositor
$\langle I/\sigma(I) \rangle$ ¹	0.96 (at 1.36Å)	Xtrriage
Refinement program	REFMAC 5.8.0238, PHENIX 1.16.3549	Depositor
R, R_{free}	0.217 , 0.218 0.226 , 0.227	Depositor DCC
R_{free} test set	6575 reflections (4.91%)	wwPDB-VP
Wilson B-factor (Å ²)	28.8	Xtrriage
Anisotropy	0.095	Xtrriage
Bulk solvent k_{sol} (e/Å ³), B_{sol} (Å ²)	0.35 , 42.8	EDS
L-test for twinning ²	$\langle L \rangle = 0.51$, $\langle L^2 \rangle = 0.35$	Xtrriage
Estimated twinning fraction	No twinning to report.	Xtrriage
F_o, F_c correlation	0.97	EDS
Total number of atoms	6074	wwPDB-VP
Average B, all atoms (Å ²)	30.0	wwPDB-VP

Xtrriage's analysis on translational NCS is as follows: *The largest off-origin peak in the Patterson function is 5.63% of the height of the origin peak. No significant pseudotranslation is detected.*

¹Intensities estimated from amplitudes.

²Theoretical values of $\langle |L| \rangle$, $\langle L^2 \rangle$ for acentric reflections are 0.5, 0.333 respectively for untwinned datasets, and 0.375, 0.2 for perfectly twinned datasets.

5 Model quality [i](#)

5.1 Standard geometry [i](#)

Bond lengths and bond angles in the following residue types are not validated in this section: SO4, PGR, TJ1

The Z score for a bond length (or angle) is the number of standard deviations the observed value is removed from the expected value. A bond length (or angle) with $|Z| > 5$ is considered an outlier worth inspection. RMSZ is the root-mean-square of all Z scores of the bond lengths (or angles).

Mol	Chain	Bond lengths		Bond angles	
		RMSZ	# Z >5	RMSZ	# Z >5
1	A	0.78	0/2577	0.86	2/3479 (0.1%)
2	B	0.88	13/3385 (0.4%)	0.85	7/4568 (0.2%)
All	All	0.84	13/5962 (0.2%)	0.85	9/8047 (0.1%)

All (13) bond length outliers are listed below:

Mol	Chain	Res	Type	Atoms	Z	Observed(Å)	Ideal(Å)
2	B	5[A]	PRO	C-O	7.64	1.38	1.23
2	B	5[B]	PRO	C-O	7.64	1.38	1.23
2	B	5[C]	PRO	C-O	7.64	1.38	1.23
2	B	5[D]	PRO	C-O	7.64	1.38	1.23
2	B	5[E]	PRO	C-O	7.64	1.38	1.23
2	B	5[F]	PRO	C-O	7.64	1.38	1.23
2	B	38	ILE	C-O	6.04	1.34	1.23
2	B	44[A]	ILE	C-O	5.64	1.34	1.23
2	B	44[B]	ILE	C-O	5.64	1.34	1.23
2	B	44[C]	ILE	C-O	5.64	1.34	1.23
2	B	44[D]	ILE	C-O	5.64	1.34	1.23
2	B	44[E]	ILE	C-O	5.64	1.34	1.23
2	B	44[F]	ILE	C-O	5.64	1.34	1.23

All (9) bond angle outliers are listed below:

Mol	Chain	Res	Type	Atoms	Z	Observed(°)	Ideal(°)
1	A	1859	ARG	NE-CZ-NH1	-6.26	117.17	120.30
1	A	1859	ARG	NE-CZ-NH2	5.90	123.25	120.30
2	B	5[A]	PRO	O-C-N	5.43	131.40	122.70
2	B	5[B]	PRO	O-C-N	5.43	131.40	122.70
2	B	5[C]	PRO	O-C-N	5.43	131.40	122.70
2	B	5[D]	PRO	O-C-N	5.43	131.40	122.70

Continued on next page...

Continued from previous page...

Mol	Chain	Res	Type	Atoms	Z	Observed(°)	Ideal(°)
2	B	5[E]	PRO	O-C-N	5.43	131.40	122.70
2	B	5[F]	PRO	O-C-N	5.43	131.40	122.70
2	B	55	ARG	CG-CD-NE	-5.36	100.55	111.80

There are no chirality outliers.

There are no planarity outliers.

5.2 Too-close contacts [i](#)

In the following table, the Non-H and H(model) columns list the number of non-hydrogen atoms and hydrogen atoms in the chain respectively. The H(added) column lists the number of hydrogen atoms added and optimized by MolProbity. The Clashes column lists the number of clashes within the asymmetric unit, whereas Symm-Clashes lists symmetry-related clashes.

Mol	Chain	Non-H	H(model)	H(added)	Clashes	Symm-Clashes
1	A	2537	0	2570	16	0
2	B	3294	0	3127	26	0
3	A	20	0	0	1	0
4	A	15	0	24	5	0
5	B	27	0	0	3	0
6	A	91	0	0	2	0
6	B	90	0	0	1	0
All	All	6074	0	5721	43	0

The all-atom clashscore is defined as the number of clashes found per 1000 atoms (including hydrogen atoms). The all-atom clashscore for this structure is 4.

All (43) close contacts within the same asymmetric unit are listed below, sorted by their clash magnitude.

Atom-1	Atom-2	Interatomic distance (Å)	Clash overlap (Å)
1:A:2081:ASP:C	1:A:2082:ILE:N	2.09	1.06
1:A:1883:ASN:HD21	4:A:2305:PGR:C1	1.98	0.76
1:A:1848:ILE:HG12	4:A:2305:PGR:H11	1.67	0.76
1:A:2083:ILE:HG22	1:A:2084:LEU:HD13	1.77	0.67
1:A:1835:MET:HE1	1:A:1961:LEU:HD12	1.79	0.64
1:A:1883:ASN:ND2	4:A:2305:PGR:O1	2.23	0.64
2:B:83[D]:GLU:OE1	5:B:401[D]:TJ1:N	2.34	0.61
2:B:83[E]:GLU:OE1	5:B:401[E]:TJ1:N	2.34	0.60
2:B:83[F]:GLU:OE1	5:B:401[F]:TJ1:N	2.34	0.60
2:B:275:LEU:CD2	2:B:283:LEU:HD13	2.32	0.59

Continued on next page...

Continued from previous page...

Atom-1	Atom-2	Interatomic distance (Å)	Clash overlap (Å)
2:B:280:SER:HB3	2:B:313:TYR:CE1	2.40	0.57
1:A:1842:GLU:OE1	6:A:2402:HOH:O	2.18	0.56
1:A:1956:ILE:HB	4:A:2307:PGR:H2	1.87	0.55
4:A:2305:PGR:O1	6:A:2401:HOH:O	2.04	0.55
1:A:2060:LEU:HD13	1:A:2071:ILE:HG23	1.91	0.53
2:B:50:ASP:HB3	6:B:584:HOH:O	2.09	0.52
2:B:203[A]:TYR:CZ	2:B:207:THR:HG21	2.45	0.51
2:B:51:ASN:HD22	2:B:51:ASN:C	2.13	0.51
2:B:203[D]:TYR:CZ	2:B:207:THR:HG21	2.46	0.51
1:A:2083:ILE:HA	1:A:2086:GLN:NE2	2.27	0.50
2:B:275:LEU:HD21	2:B:283:LEU:HD13	1.94	0.49
2:B:68[F]:TYR:CZ	2:B:81:MET:HB2	2.48	0.48
2:B:68[D]:TYR:CZ	2:B:81:MET:HB2	2.48	0.48
2:B:68[E]:TYR:CZ	2:B:81:MET:HB2	2.48	0.48
2:B:280:SER:CB	2:B:313:TYR:CE1	2.97	0.47
2:B:68[F]:TYR:CE1	2:B:81:MET:HB2	2.50	0.46
1:A:2089:LYS:NZ	3:A:2306:SO4:O3	2.45	0.46
1:A:1859:ARG:HH12	1:A:1979[D]:MET:CE	2.29	0.46
2:B:68[D]:TYR:CE1	2:B:81:MET:HB2	2.50	0.45
2:B:68[E]:TYR:CE1	2:B:81:MET:HB2	2.50	0.45
2:B:44[A]:ILE:O	2:B:44[A]:ILE:HG23	2.17	0.45
2:B:309:MET:HB3	2:B:317:LEU:HD11	2.00	0.44
2:B:122[C]:GLN:O	2:B:126:ILE:HG13	2.19	0.43
2:B:122[E]:GLN:O	2:B:126:ILE:HG13	2.19	0.43
2:B:122[F]:GLN:O	2:B:126:ILE:HG13	2.19	0.43
1:A:2058:LEU:C	1:A:2058:LEU:HD23	2.39	0.42
2:B:201:LYS:HG3	2:B:252:SER:HB2	2.02	0.42
2:B:122[B]:GLN:O	2:B:126:ILE:HG13	2.20	0.42
1:A:2029:ASP:HB3	1:A:2032:ILE:HD12	2.03	0.41
2:B:1:MET:HB3	2:B:35:ASP:HA	2.03	0.41
1:A:2071:ILE:HD12	1:A:2074:LEU:HD11	2.02	0.41
1:A:2081:ASP:C	1:A:2082:ILE:CA	2.87	0.41
2:B:64[D]:MET:SD	2:B:123:MET:HG2	2.61	0.41

There are no symmetry-related clashes.

5.3 Torsion angles [i](#)

5.3.1 Protein backbone [i](#)

In the following table, the Percentiles column shows the percent Ramachandran outliers of the chain as a percentile score with respect to all X-ray entries followed by that with respect to entries of similar resolution.

The Analysed column shows the number of residues for which the backbone conformation was analysed, and the total number of residues.

Mol	Chain	Analysed	Favoured	Allowed	Outliers	Percentiles	
1	A	314/258 (122%)	309 (98%)	5 (2%)	0	100	100
2	B	386/308 (125%)	374 (97%)	12 (3%)	0	100	100
All	All	700/566 (124%)	683 (98%)	17 (2%)	0	100	100

There are no Ramachandran outliers to report.

5.3.2 Protein sidechains [i](#)

In the following table, the Percentiles column shows the percent sidechain outliers of the chain as a percentile score with respect to all X-ray entries followed by that with respect to entries of similar resolution.

The Analysed column shows the number of residues for which the sidechain conformation was analysed, and the total number of residues.

Mol	Chain	Analysed	Rotameric	Outliers	Percentiles	
1	A	294/233 (126%)	279 (95%)	15 (5%)	24	2
2	B	367/284 (129%)	362 (99%)	5 (1%)	67	36
All	All	661/517 (128%)	641 (97%)	20 (3%)	42	9

All (20) residues with a non-rotameric sidechain are listed below:

Mol	Chain	Res	Type
1	A	1837	SER
1	A	1976	ASP
1	A	1979[A]	MET
1	A	1979[B]	MET
1	A	1979[C]	MET
1	A	1979[D]	MET
1	A	1979[E]	MET
1	A	1979[F]	MET

Continued on next page...

Continued from previous page...

Mol	Chain	Res	Type
1	A	2060	LEU
1	A	2070	ASN
1	A	2071	ILE
1	A	2076	GLN
1	A	2077	THR
1	A	2080	LYS
1	A	2084	LEU
2	B	51	ASN
2	B	55	ARG
2	B	258	LYS
2	B	291	ILE
2	B	315	GLU

Sometimes sidechains can be flipped to improve hydrogen bonding and reduce clashes. All (5) such sidechains are listed below:

Mol	Chain	Res	Type
1	A	1846	ASN
1	A	2070	ASN
1	A	2086	GLN
2	B	51	ASN
2	B	91	ASN

5.3.3 RNA [i](#)

There are no RNA molecules in this entry.

5.4 Non-standard residues in protein, DNA, RNA chains [i](#)

There are no non-standard protein/DNA/RNA residues in this entry.

5.5 Carbohydrates [i](#)

There are no monosaccharides in this entry.

5.6 Ligand geometry [i](#)

10 ligands are modelled in this entry.

In the following table, the Counts columns list the number of bonds (or angles) for which Mogul statistics could be retrieved, the number of bonds (or angles) that are observed in the model and the number of bonds (or angles) that are defined in the Chemical Component Dictionary. The Link column lists molecule types, if any, to which the group is linked. The Z score for a bond length (or angle) is the number of standard deviations the observed value is removed from the expected value. A bond length (or angle) with $|Z| > 2$ is considered an outlier worth inspection. RMSZ is the root-mean-square of all Z scores of the bond lengths (or angles).

Mol	Type	Chain	Res	Link	Bond lengths			Bond angles		
					Counts	RMSZ	# Z > 2	Counts	RMSZ	# Z > 2
5	TJ1	B	401[D]	-	7,9,9	5.65	3 (42%)	11,12,12	3.09	5 (45%)
3	SO4	A	2306	-	4,4,4	0.39	0	6,6,6	0.28	0
3	SO4	A	2302	-	4,4,4	0.36	0	6,6,6	0.09	0
4	PGR	A	2307	-	3,4,4	0.62	0	1,4,4	1.33	0
5	TJ1	B	401[E]	-	7,9,9	5.63	3 (42%)	11,12,12	3.07	5 (45%)
5	TJ1	B	401[F]	-	7,9,9	5.63	3 (42%)	11,12,12	3.07	5 (45%)
4	PGR	A	2304	-	3,4,4	0.28	0	1,4,4	1.05	0
3	SO4	A	2303	-	4,4,4	0.32	0	6,6,6	0.28	0
4	PGR	A	2305	-	3,4,4	0.34	0	1,4,4	1.44	0
3	SO4	A	2301	-	4,4,4	0.35	0	6,6,6	0.33	0

In the following table, the Chirals column lists the number of chiral outliers, the number of chiral centers analysed, the number of these observed in the model and the number defined in the Chemical Component Dictionary. Similar counts are reported in the Torsion and Rings columns. '-' means no outliers of that kind were identified.

Mol	Type	Chain	Res	Link	Chirals	Torsions	Rings
5	TJ1	B	401[D]	-	-	0/4/4/4	0/1/1/1
5	TJ1	B	401[F]	-	-	0/4/4/4	0/1/1/1
4	PGR	A	2307	-	-	2/2/2/2	-
5	TJ1	B	401[E]	-	-	0/4/4/4	0/1/1/1
4	PGR	A	2304	-	-	0/2/2/2	-
4	PGR	A	2305	-	-	0/2/2/2	-

All (9) bond length outliers are listed below:

Mol	Chain	Res	Type	Atoms	Z	Observed(Å)	Ideal(Å)
5	B	401[D]	TJ1	O1-C4	13.87	1.47	1.21
5	B	401[E]	TJ1	O1-C4	13.80	1.47	1.21
5	B	401[F]	TJ1	O1-C4	13.80	1.47	1.21
5	B	401[E]	TJ1	O-N1	-4.72	1.33	1.42
5	B	401[F]	TJ1	O-N1	-4.72	1.33	1.42
5	B	401[D]	TJ1	O-N1	-4.70	1.33	1.42
5	B	401[D]	TJ1	C1-C3	-2.16	1.48	1.50

Continued on next page...

Continued from previous page...

Mol	Chain	Res	Type	Atoms	Z	Observed(Å)	Ideal(Å)
5	B	401[E]	TJ1	C1-C3	-2.13	1.48	1.50
5	B	401[F]	TJ1	C1-C3	-2.13	1.48	1.50

All (15) bond angle outliers are listed below:

Mol	Chain	Res	Type	Atoms	Z	Observed(°)	Ideal(°)
5	B	401[D]	TJ1	O-C4-N	6.09	111.97	106.17
5	B	401[E]	TJ1	O-C4-N	6.06	111.94	106.17
5	B	401[F]	TJ1	O-C4-N	6.06	111.94	106.17
5	B	401[E]	TJ1	C4-N-C3	-4.36	103.49	107.96
5	B	401[F]	TJ1	C4-N-C3	-4.36	103.49	107.96
5	B	401[D]	TJ1	C4-N-C3	-4.34	103.51	107.96
5	B	401[E]	TJ1	O-N1-C3	3.92	106.98	104.58
5	B	401[F]	TJ1	O-N1-C3	3.92	106.98	104.58
5	B	401[D]	TJ1	O-N1-C3	3.90	106.97	104.58
5	B	401[D]	TJ1	O1-C4-N	-3.77	123.88	129.83
5	B	401[E]	TJ1	O1-C4-N	-3.74	123.94	129.83
5	B	401[F]	TJ1	O1-C4-N	-3.74	123.94	129.83
5	B	401[D]	TJ1	C4-O-N1	-3.63	107.06	109.06
5	B	401[E]	TJ1	C4-O-N1	-3.55	107.10	109.06
5	B	401[F]	TJ1	C4-O-N1	-3.55	107.10	109.06

There are no chirality outliers.

All (2) torsion outliers are listed below:

Mol	Chain	Res	Type	Atoms
4	A	2307	PGR	O1-C1-C2-C3
4	A	2307	PGR	O1-C1-C2-O2

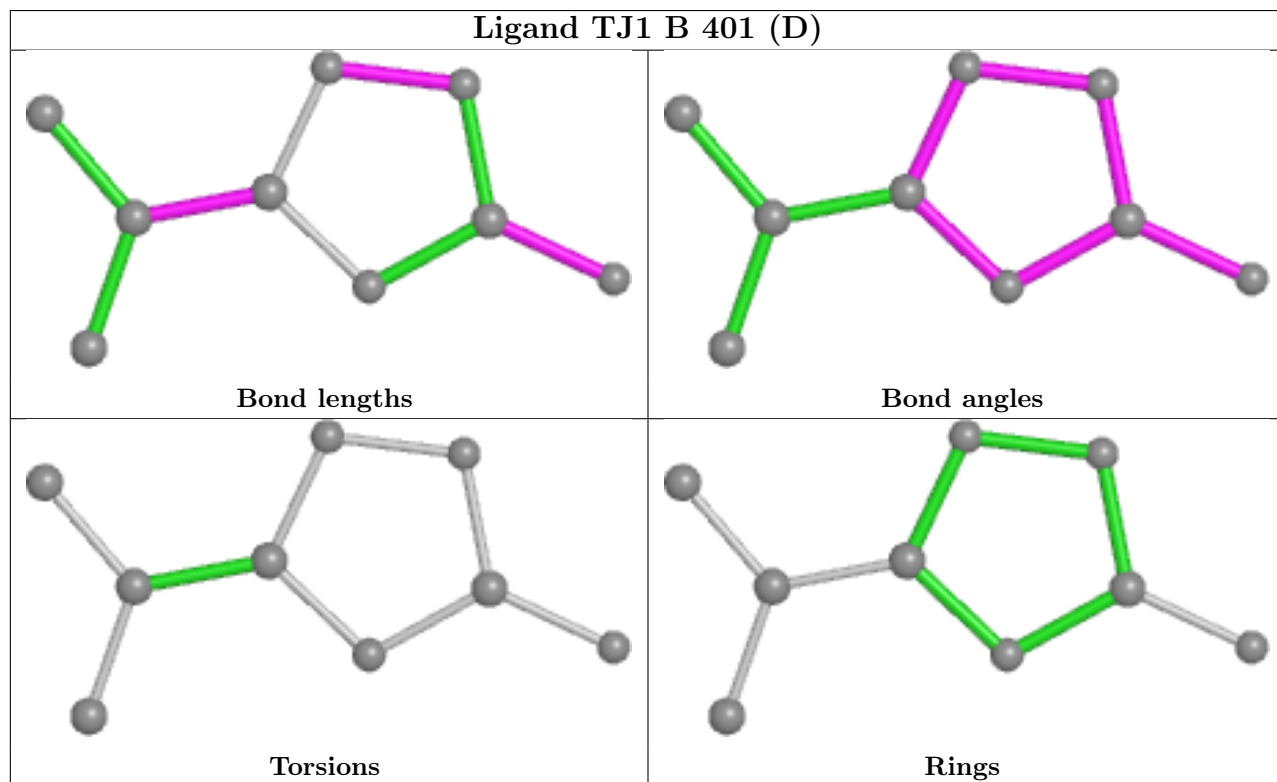
There are no ring outliers.

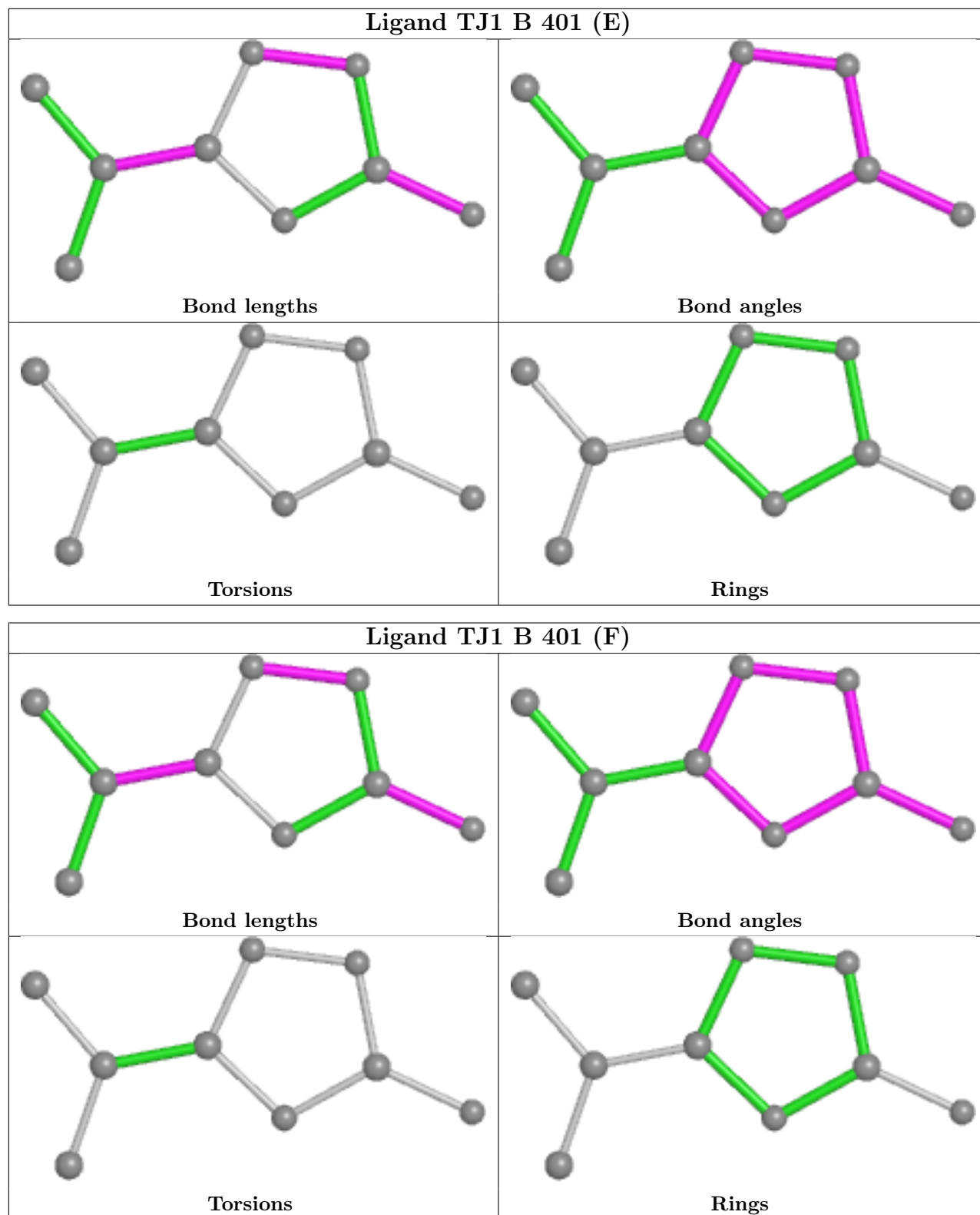
6 monomers are involved in 9 short contacts:

Mol	Chain	Res	Type	Clashes	Symm-Clashes
5	B	401[D]	TJ1	1	0
3	A	2306	SO4	1	0
4	A	2307	PGR	1	0
5	B	401[E]	TJ1	1	0
5	B	401[F]	TJ1	1	0
4	A	2305	PGR	4	0

The following is a two-dimensional graphical depiction of Mogul quality analysis of bond lengths,

bond angles, torsion angles, and ring geometry for all instances of the Ligand of Interest. In addition, ligands with molecular weight > 250 and outliers as shown on the validation Tables will also be included. For torsion angles, if less than 5% of the Mogul distribution of torsion angles is within 10 degrees of the torsion angle in question, then that torsion angle is considered an outlier. Any bond that is central to one or more torsion angles identified as an outlier by Mogul will be highlighted in the graph. For rings, the root-mean-square deviation (RMSD) between the ring in question and similar rings identified by Mogul is calculated over all ring torsion angles. If the average RMSD is greater than 60 degrees and the minimal RMSD between the ring in question and any Mogul-identified rings is also greater than 60 degrees, then that ring is considered an outlier. The outliers are highlighted in purple. The color gray indicates Mogul did not find sufficient equivalents in the CSD to analyse the geometry.





5.7 Other polymers [\(i\)](#)

There are no such residues in this entry.

5.8 Polymer linkage issues

The following chains have linkage breaks:

Mol	Chain	Number of breaks
1	A	1

All chain breaks are listed below:

Model	Chain	Residue-1	Atom-1	Residue-2	Atom-2	Distance (Å)
1	A	2081:ASP	C	2082:ILE	N	2.09

6 Fit of model and data [i](#)

6.1 Protein, DNA and RNA chains [i](#)

In the following table, the column labelled ‘#RSRZ> 2’ contains the number (and percentage) of RSRZ outliers, followed by percent RSRZ outliers for the chain as percentile scores relative to all X-ray entries and entries of similar resolution. The OWAB column contains the minimum, median, 95th percentile and maximum values of the occupancy-weighted average B-factor per residue. The column labelled ‘Q< 0.9’ lists the number of (and percentage) of residues with an average occupancy less than 0.9.

Mol	Chain	Analysed	<RSRZ>	#RSRZ>2	OWAB(Å ²)	Q<0.9
1	A	257/258 (99%)	1.10	27 (10%) 6 7	18, 26, 57, 80	1 (0%)
2	B	300/308 (97%)	1.03	43 (14%) 2 2	19, 29, 55, 87	0
All	All	557/566 (98%)	1.07	70 (12%) 3 3	18, 28, 56, 87	1 (0%)

All (70) RSRZ outliers are listed below:

Mol	Chain	Res	Type	RSRZ
2	B	1	MET	11.4
1	A	1833	GLY	11.1
1	A	2088	ILE	9.8
2	B	172	PRO	9.1
1	A	1838	SER	8.2
2	B	173	ALA	7.2
1	A	2084	LEU	7.0
1	A	1836	ASN	6.6
1	A	2027	LEU	6.4
1	A	1834	ALA	6.4
2	B	170	SER	6.2
1	A	1837	SER	5.1
1	A	2028	SER	4.9
2	B	108	ILE	4.7
2	B	109	ASP	4.4
2	B	171	ASP	4.4
1	A	2083	ILE	4.3
1	A	2074	LEU	4.0
1	A	2081	ASP	4.0
1	A	2082	ILE	3.9
2	B	44[A]	ILE	3.8
1	A	1835	MET	3.8
2	B	279	TYR	3.7
1	A	2032	ILE	3.7

Continued on next page...

Continued from previous page...

Mol	Chain	Res	Type	RSRZ
1	A	2077	THR	3.6
1	A	1839	ASN	3.6
1	A	2087	ASN	3.5
2	B	181	ILE	3.4
2	B	150	ASN	3.4
2	B	152	LEU	3.3
2	B	41[A]	VAL	3.3
2	B	91	ASN	3.3
2	B	94	HIS	3.3
2	B	148	GLN	3.2
2	B	92[A]	ILE	3.1
1	A	2080	LYS	3.1
2	B	27	ASN	2.9
2	B	229	LEU	2.9
2	B	50	ASP	2.8
2	B	38	ILE	2.7
2	B	133	ASP	2.6
1	A	2075	THR	2.6
2	B	122[A]	GLN	2.6
2	B	117	LEU	2.5
2	B	96[A]	PHE	2.5
2	B	174	HIS	2.5
2	B	88[A]	LYS	2.5
1	A	2046	GLU	2.4
2	B	26	GLU	2.4
1	A	1953	ASN	2.3
2	B	43	VAL	2.3
2	B	228	PHE	2.3
2	B	317	LEU	2.3
1	A	1938	LYS	2.3
2	B	89[A]	PHE	2.2
2	B	295	SER	2.2
2	B	84	ARG	2.2
2	B	87	ALA	2.2
2	B	106	PRO	2.2
2	B	151	GLU	2.2
2	B	93	VAL	2.2
2	B	259	HIS	2.1
1	A	1857	VAL	2.1
2	B	110	GLU	2.1
1	A	2073	ALA	2.1
1	A	1934	ILE	2.1

Continued on next page...

Continued from previous page...

Mol	Chain	Res	Type	RSRZ
1	A	1898[A]	VAL	2.1
2	B	147	VAL	2.1
2	B	293	LEU	2.0
2	B	17	ILE	2.0

6.2 Non-standard residues in protein, DNA, RNA chains [i](#)

There are no non-standard protein/DNA/RNA residues in this entry.

6.3 Carbohydrates [i](#)

There are no monosaccharides in this entry.

6.4 Ligands [i](#)

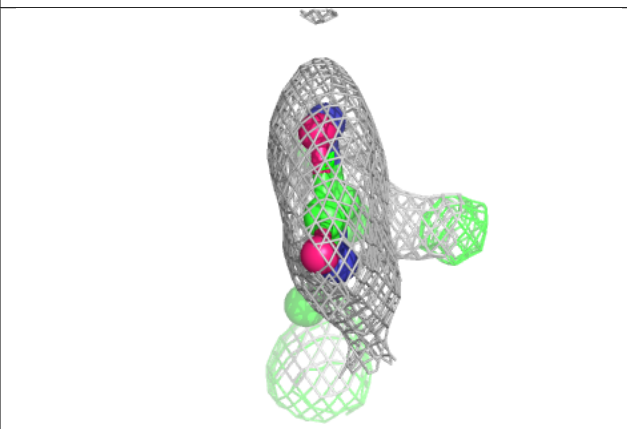
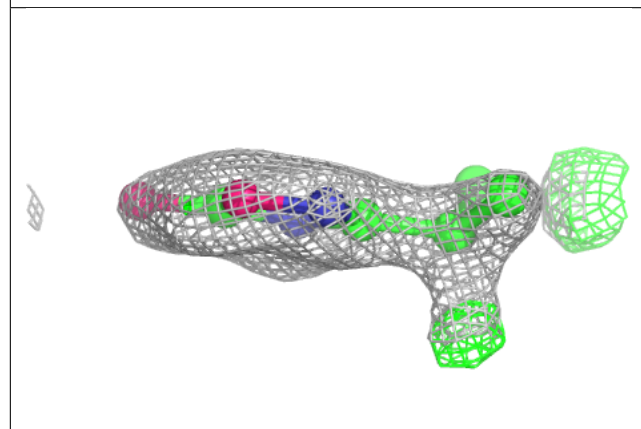
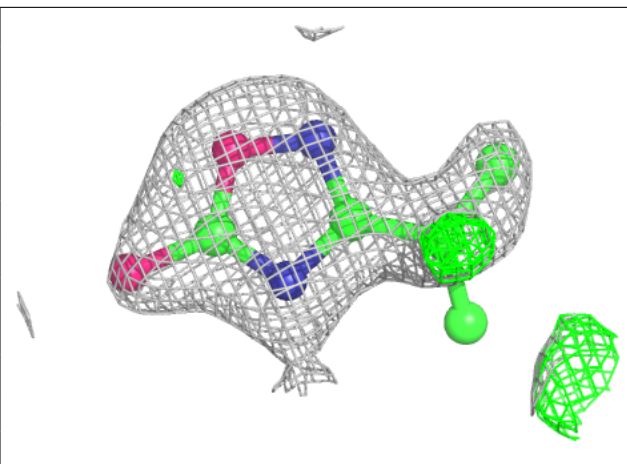
In the following table, the Atoms column lists the number of modelled atoms in the group and the number defined in the chemical component dictionary. The B-factors column lists the minimum, median, 95th percentile and maximum values of B factors of atoms in the group. The column labelled 'Q< 0.9' lists the number of atoms with occupancy less than 0.9.

Mol	Type	Chain	Res	Atoms	RSCC	RSR	B-factors(Å ²)	Q<0.9
4	PGR	A	2305	5/5	0.79	0.23	22,27,40,56	0
4	PGR	A	2307	5/5	0.88	0.21	34,35,45,48	0
5	TJ1	B	401[D]	9/9	0.88	0.22	28,29,30,32	9
5	TJ1	B	401[E]	9/9	0.88	0.22	28,29,30,32	9
5	TJ1	B	401[F]	9/9	0.88	0.22	28,29,30,32	9
4	PGR	A	2304	5/5	0.89	0.14	35,41,45,47	0
3	SO4	A	2303	5/5	0.90	0.18	44,46,52,53	0
3	SO4	A	2306	5/5	0.94	0.22	47,49,56,57	0
3	SO4	A	2302	5/5	0.96	0.25	60,61,73,76	0
3	SO4	A	2301	5/5	0.97	0.12	29,33,36,39	0

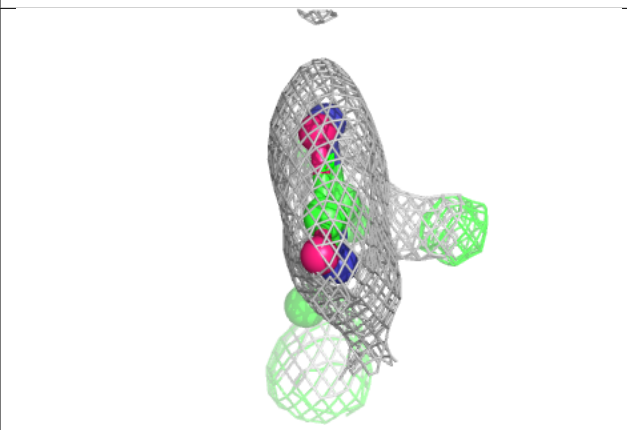
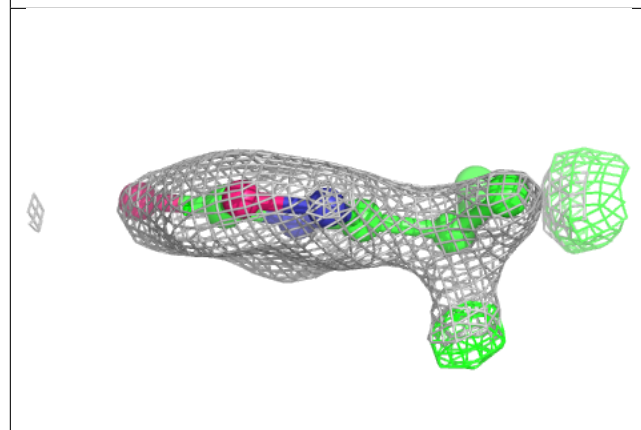
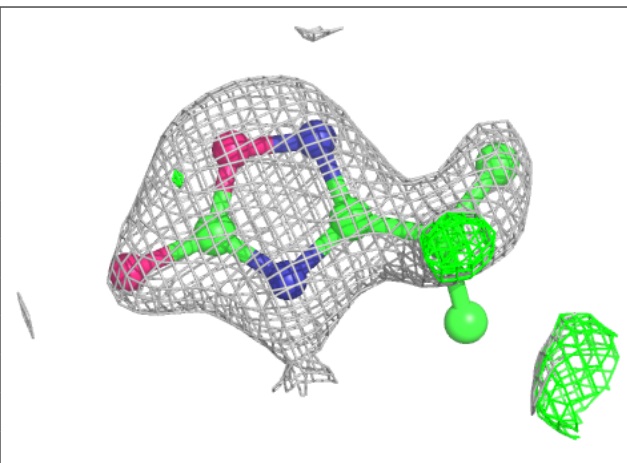
The following is a graphical depiction of the model fit to experimental electron density of all instances of the Ligand of Interest. In addition, ligands with molecular weight > 250 and outliers as shown on the geometry validation Tables will also be included. Each fit is shown from different orientation to approximate a three-dimensional view.

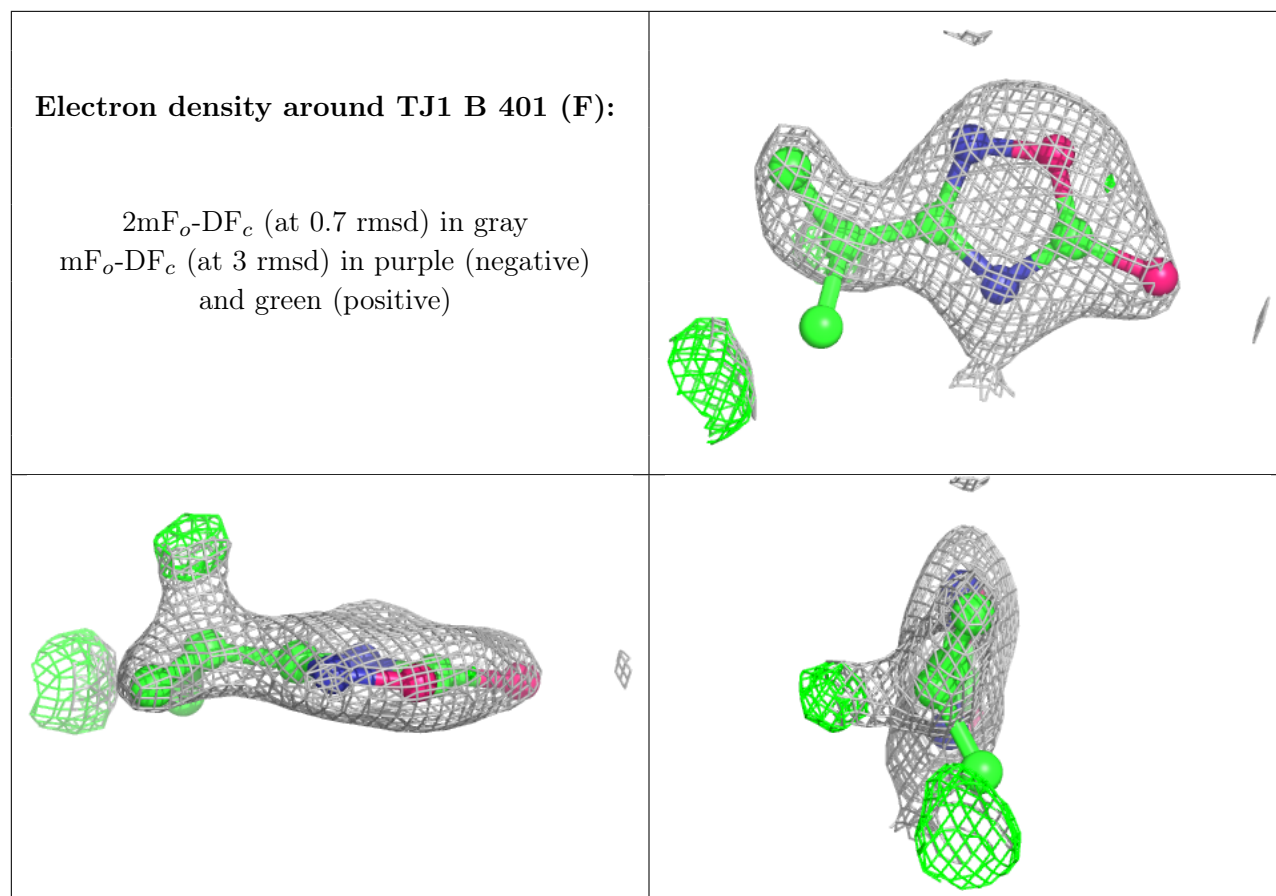
Electron density around TJ1 B 401 (D):

$2mF_o-DF_c$ (at 0.7 rmsd) in gray
 mF_o-DF_c (at 3 rmsd) in purple (negative)
and green (positive)

**Electron density around TJ1 B 401 (E):**

$2mF_o-DF_c$ (at 0.7 rmsd) in gray
 mF_o-DF_c (at 3 rmsd) in purple (negative)
and green (positive)





6.5 Other polymers [i](#)

There are no such residues in this entry.