



Full wwPDB X-ray Structure Validation Report ⓘ

Jun 17, 2024 – 06:06 AM EDT

PDB ID : 5PYW
Title : PanDDA analysis group deposition – Crystal Structure of SP100 after initial refinement with no ligand modelled (structure 92)
Authors : Pearce, N.M.; Krojer, T.; Talon, R.; Bradley, A.R.; Fairhead, M.; Sethi, R.; Wright, N.; MacLean, E.; Collins, P.; Brandao-Neto, J.; Douangamath, A.; Renjie, Z.; Dias, A.; Ng, J.; Brennan, P.E.; Cox, O.; Bountra, C.; Arrowsmith, C.H.; Edwards, A.; von Delft, F.
Deposited on : 2017-02-08
Resolution : 1.45 Å(reported)

This is a Full wwPDB X-ray Structure Validation Report for a publicly released PDB entry.

We welcome your comments at validation@mail.wwpdb.org

A user guide is available at

<https://www.wwpdb.org/validation/2017/XrayValidationReportHelp>

with specific help available everywhere you see the ⓘ symbol.

The types of validation reports are described at

<http://www.wwpdb.org/validation/2017/FAQs#types>.

The following versions of software and data (see [references ⓘ](#)) were used in the production of this report:

MolProbity : 4.02b-467
Mogul : 1.8.5 (274361), CSD as541be (2020)
Xtriage (Phenix) : 1.13
EDS : 2.37.1
Percentile statistics : 20191225.v01 (using entries in the PDB archive December 25th 2019)
Refmac : 5.8.0158
CCP4 : 7.0.044 (Gargrove)
Ideal geometry (proteins) : Engh & Huber (2001)
Ideal geometry (DNA, RNA) : Parkinson et al. (1996)

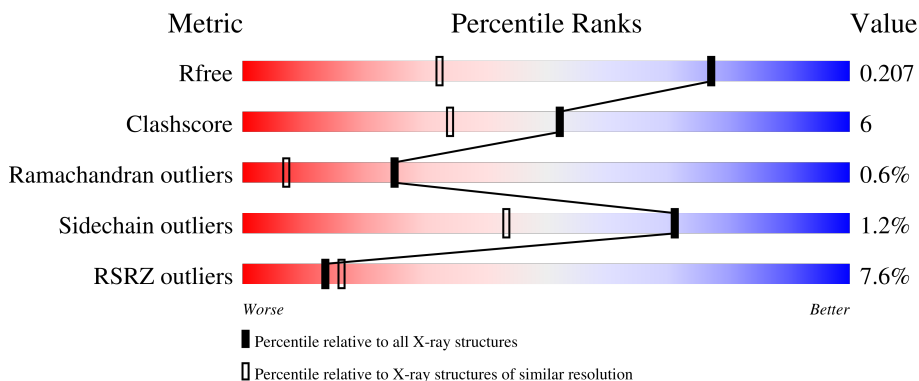
1 Overall quality at a glance i

The following experimental techniques were used to determine the structure:

X-RAY DIFFRACTION

The reported resolution of this entry is 1.45 Å.

Percentile scores (ranging between 0-100) for global validation metrics of the entry are shown in the following graphic. The table shows the number of entries on which the scores are based.



Metric	Whole archive (#Entries)	Similar resolution (#Entries, resolution range(Å))
R_{free}	130704	1156 (1.46-1.46)
Clashscore	141614	1202 (1.46-1.46)
Ramachandran outliers	138981	1178 (1.46-1.46)
Sidechain outliers	138945	1178 (1.46-1.46)
RSRZ outliers	127900	1139 (1.46-1.46)

The table below summarises the geometric issues observed across the polymeric chains and their fit to the electron density. The red, orange, yellow and green segments of the lower bar indicate the fraction of residues that contain outliers for ≥ 3 , 2, 1 and 0 types of geometric quality criteria respectively. A grey segment represents the fraction of residues that are not modelled. The numeric value for each fraction is indicated below the corresponding segment, with a dot representing fractions $\leq 5\%$. The upper red bar (where present) indicates the fraction of residues that have poor fit to the electron density. The numeric value is given above the bar.

Mol	Chain	Length	Quality of chain
1	A	180	<div style="display: flex; align-items: center;"> <div style="width: 4%; height: 10px; background-color: red; margin-right: 5px;"></div> <div style="width: 86%; height: 10px; background-color: green; margin-right: 5px;"></div> <div style="width: 12%; height: 10px; background-color: yellow; margin-right: 5px;"></div> <div style="width: 1%; height: 10px; background-color: grey; margin-right: 5px;"></div> <div style="margin-left: 5px;">..</div> </div>
1	B	180	<div style="display: flex; align-items: center;"> <div style="width: 11%; height: 10px; background-color: red; margin-right: 5px;"></div> <div style="width: 85%; height: 10px; background-color: green; margin-right: 5px;"></div> <div style="width: 12%; height: 10px; background-color: yellow; margin-right: 5px;"></div> <div style="width: 1%; height: 10px; background-color: grey; margin-right: 5px;"></div> <div style="margin-left: 5px;">..</div> </div>

The following table lists non-polymeric compounds, carbohydrate monomers and non-standard residues in protein, DNA, RNA chains that are outliers for geometric or electron-density-fit crite-

Validation Pipeline (wwPDB-VP) : 2.37.1

ria:

Mol	Type	Chain	Res	Chirality	Geometry	Clashes	Electron density
4	EDO	A	905	-	-	X	-

2 Entry composition [i](#)

There are 5 unique types of molecules in this entry. The entry contains 3620 atoms, of which 0 are hydrogens and 0 are deuteriums.

In the tables below, the ZeroOcc column contains the number of atoms modelled with zero occupancy, the AltConf column contains the number of residues with at least one atom in alternate conformation and the Trace column contains the number of residues modelled with at most 2 atoms.

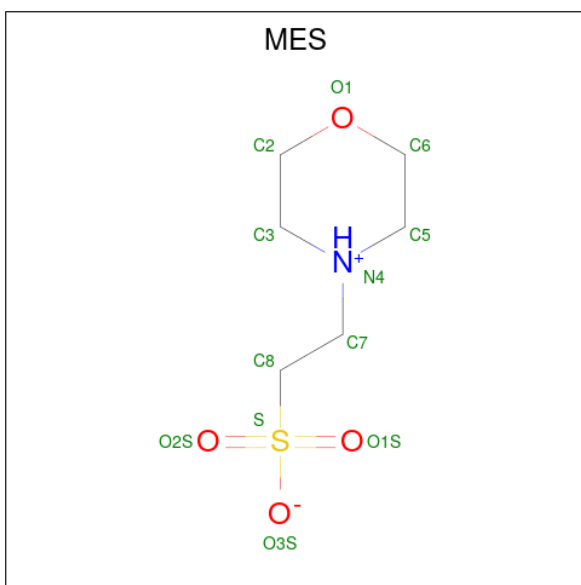
- Molecule 1 is a protein called Nuclear autoantigen Sp-100.

Mol	Chain	Residues	Atoms					ZeroOcc	AltConf	Trace
			Total	C	N	O	S			
1	A	178	Total 1536	C 971	N 268	O 278	S 19	0	10	0
1	B	177	Total 1480	C 940	N 258	O 263	S 19	0	7	0

- Molecule 2 is ZINC ION (three-letter code: ZN) (formula: Zn).

Mol	Chain	Residues	Atoms		ZeroOcc	AltConf
2	A	3	Total 3	Zn 3	0	0
2	B	2	Total 2	Zn 2	0	0

- Molecule 3 is 2-(N-MORPHOLINO)-ETHANESULFONIC ACID (three-letter code: MES) (formula: C₆H₁₃NO₄S).



Mol	Chain	Residues	Atoms					ZeroOcc	AltConf
			Total	C	N	O	S		
3	A	1	12	6	1	4	1	0	0

- Molecule 4 is 1,2-ETHANEDIOL (three-letter code: EDO) (formula: C₂H₆O₂).



Mol	Chain	Residues	Atoms			ZeroOcc	AltConf
			Total	C	O		
4	A	1	4	2	2	0	0
4	B	1	4	2	2	0	0

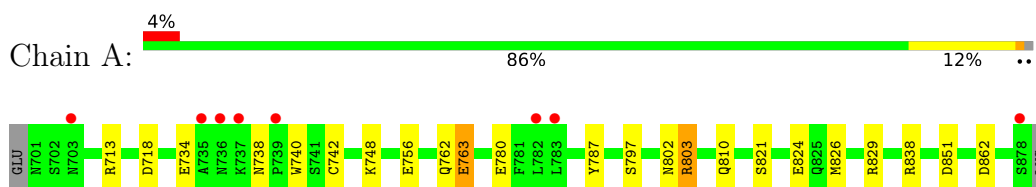
- Molecule 5 is water.

Mol	Chain	Residues	Atoms		ZeroOcc	AltConf
			Total	O		
5	A	313	313	313	0	3
5	B	266	266	266	0	0

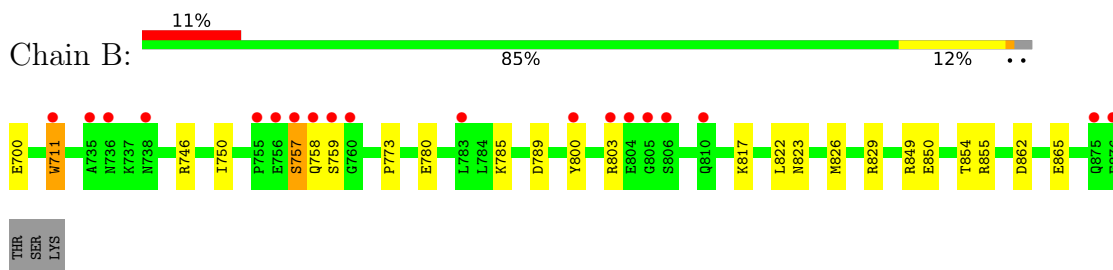
3 Residue-property plots [i](#)

These plots are drawn for all protein, RNA, DNA and oligosaccharide chains in the entry. The first graphic for a chain summarises the proportions of the various outlier classes displayed in the second graphic. The second graphic shows the sequence view annotated by issues in geometry and electron density. Residues are color-coded according to the number of geometric quality criteria for which they contain at least one outlier: green = 0, yellow = 1, orange = 2 and red = 3 or more. A red dot above a residue indicates a poor fit to the electron density ($RSRZ > 2$). Stretches of 2 or more consecutive residues without any outlier are shown as a green connector. Residues present in the sample, but not in the model, are shown in grey.

- Molecule 1: Nuclear autoantigen Sp-100



- Molecule 1: Nuclear autoantigen Sp-100



4 Data and refinement statistics

Property	Value	Source
Space group	C 1 2 1	Depositor
Cell constants a, b, c, α , β , γ	127.70Å 45.41Å 83.52Å 90.00° 102.17° 90.00°	Depositor
Resolution (Å)	27.35 – 1.45 27.35 – 1.45	Depositor EDS
% Data completeness (in resolution range)	91.4 (27.35-1.45) 91.5 (27.35-1.45)	Depositor EDS
R_{merge}	0.04	Depositor
R_{sym}	(Not available)	Depositor
$\langle I/\sigma(I) \rangle$ ¹	2.11 (at 1.45Å)	Xtrriage
Refinement program	REFMAC 5.8.0135	Depositor
R, R_{free}	0.173 , 0.200 0.182 , 0.207	Depositor DCC
R_{free} test set	3821 reflections (5.02%)	wwPDB-VP
Wilson B-factor (Å ²)	18.6	Xtrriage
Anisotropy	0.012	Xtrriage
Bulk solvent k_{sol} (e/Å ³), B_{sol} (Å ²)	0.32 , 47.7	EDS
L-test for twinning ²	$\langle L \rangle = 0.49$, $\langle L^2 \rangle = 0.32$	Xtrriage
Estimated twinning fraction	No twinning to report.	Xtrriage
F_o, F_c correlation	0.97	EDS
Total number of atoms	3620	wwPDB-VP
Average B, all atoms (Å ²)	28.0	wwPDB-VP

Xtrriage's analysis on translational NCS is as follows: *The largest off-origin peak in the Patterson function is 6.18% of the height of the origin peak. No significant pseudotranslation is detected.*

¹Intensities estimated from amplitudes.

²Theoretical values of $\langle |L| \rangle$, $\langle L^2 \rangle$ for acentric reflections are 0.5, 0.333 respectively for untwinned datasets, and 0.375, 0.2 for perfectly twinned datasets.

5 Model quality i

5.1 Standard geometry i

Bond lengths and bond angles in the following residue types are not validated in this section: MES, ZN, EDO

The Z score for a bond length (or angle) is the number of standard deviations the observed value is removed from the expected value. A bond length (or angle) with $|Z| > 5$ is considered an outlier worth inspection. RMSZ is the root-mean-square of all Z scores of the bond lengths (or angles).

Mol	Chain	Bond lengths		Bond angles	
		RMSZ	# Z >5	RMSZ	# Z >5
1	A	1.35	6/1603 (0.4%)	1.21	9/2154 (0.4%)
1	B	1.30	4/1538 (0.3%)	1.25	7/2071 (0.3%)
All	All	1.33	10/3141 (0.3%)	1.23	16/4225 (0.4%)

All (10) bond length outliers are listed below:

Mol	Chain	Res	Type	Atoms	Z	Observed(Å)	Ideal(Å)
1	A	742	CYS	CB-SG	-14.28	1.57	1.82
1	A	763	GLU	CD-OE1	-10.26	1.14	1.25
1	B	711	TRP	CE3-CZ3	6.68	1.49	1.38
1	B	865	GLU	CG-CD	6.00	1.60	1.51
1	A	797	SER	CB-OG	-5.87	1.34	1.42
1	A	803[A]	ARG	CZ-NH2	-5.84	1.25	1.33
1	A	803[B]	ARG	CZ-NH2	-5.84	1.25	1.33
1	B	780	GLU	CD-OE2	5.45	1.31	1.25
1	A	821	SER	CB-OG	5.14	1.49	1.42
1	B	823	ASN	CG-ND2	-5.08	1.20	1.32

All (16) bond angle outliers are listed below:

Mol	Chain	Res	Type	Atoms	Z	Observed(°)	Ideal(°)
1	B	829[A]	ARG	NE-CZ-NH2	-12.55	114.03	120.30
1	B	829[B]	ARG	NE-CZ-NH2	-12.55	114.03	120.30
1	B	855	ARG	NE-CZ-NH1	7.61	124.11	120.30
1	A	851	ASP	CB-CG-OD1	7.43	124.99	118.30
1	B	855	ARG	NE-CZ-NH2	-7.16	116.72	120.30
1	A	780	GLU	OE1-CD-OE2	6.89	131.57	123.30
1	A	713	ARG	NE-CZ-NH2	6.55	123.57	120.30
1	A	787	TYR	CB-CG-CD2	6.38	124.83	121.00
1	A	742	CYS	CA-CB-SG	6.25	125.26	114.00

Continued on next page...

Continued from previous page...

Mol	Chain	Res	Type	Atoms	Z	Observed(°)	Ideal(°)
1	A	718	ASP	CB-CG-OD2	5.99	123.69	118.30
1	A	838	ARG	NE-CZ-NH2	-5.57	117.52	120.30
1	B	822	LEU	CB-CG-CD2	5.53	120.40	111.00
1	B	746	ARG	NE-CZ-NH2	-5.48	117.56	120.30
1	A	718	ASP	CB-CG-OD1	-5.36	113.48	118.30
1	A	713	ARG	NE-CZ-NH1	-5.32	117.64	120.30
1	B	789	ASP	CB-CG-OD2	-5.13	113.69	118.30

There are no chirality outliers.

There are no planarity outliers.

5.2 Too-close contacts

In the following table, the Non-H and H(model) columns list the number of non-hydrogen atoms and hydrogen atoms in the chain respectively. The H(added) column lists the number of hydrogen atoms added and optimized by MolProbity. The Clashes column lists the number of clashes within the asymmetric unit, whereas Symm-Clashes lists symmetry-related clashes.

Mol	Chain	Non-H	H(model)	H(added)	Clashes	Symm-Clashes
1	A	1536	0	1496	17	0
1	B	1480	0	1414	12	0
2	A	3	0	0	0	0
2	B	2	0	0	0	0
3	A	12	0	12	3	0
4	A	4	0	6	4	0
4	B	4	0	6	1	0
5	A	313	0	0	14	1
5	B	266	0	0	7	2
All	All	3620	0	2934	33	3

The all-atom clashscore is defined as the number of clashes found per 1000 atoms (including hydrogen atoms). The all-atom clashscore for this structure is 6.

All (33) close contacts within the same asymmetric unit are listed below, sorted by their clash magnitude.

Atom-1	Atom-2	Interatomic distance (Å)	Clash overlap (Å)
1:A:829[A]:ARG:NH1	5:A:1002:HOH:O	1.97	0.97
3:A:904:MES:H81	5:A:1228:HOH:O	1.66	0.96
1:A:803[B]:ARG:NH1	5:A:1003:HOH:O	1.97	0.95
1:B:826[B]:MET:HE2	5:B:1195:HOH:O	1.74	0.87

Continued on next page...

Continued from previous page...

Atom-1	Atom-2	Interatomic distance (Å)	Clash overlap (Å)
1:A:803[A]:ARG:NH2	5:A:1001:HOH:O	1.71	0.85
1:A:756:GLU:HG3	5:A:1109:HOH:O	1.84	0.77
1:B:826[B]:MET:SD	5:B:1011:HOH:O	2.47	0.71
1:B:750:ILE:HD11	5:B:1001:HOH:O	1.92	0.68
5:A:1001:HOH:O	1:B:773:PRO:HG2	1.96	0.65
1:A:802:ASN:O	3:A:904:MES:H32	1.99	0.63
1:A:824:GLU:OE1	1:A:826[B]:MET:HE2	1.99	0.63
1:A:862[A]:ASP:OD1	5:A:1004:HOH:O	2.17	0.60
1:B:849:ARG:O	1:B:854[B]:THR:HG21	2.08	0.54
1:A:734:GLU:OE1	1:A:740:TRP:NE1	2.31	0.54
1:B:757:SER:O	1:B:759:SER:N	2.37	0.54
1:A:803[A]:ARG:NE	3:A:904:MES:O1S	2.34	0.54
1:A:762:GLN:NE2	5:A:1009:HOH:O	2.43	0.52
1:B:817:LYS:NZ	5:B:1010:HOH:O	2.44	0.50
1:A:810:GLN:NE2	5:A:1014:HOH:O	2.46	0.48
1:A:824:GLU:OE1	1:A:826[B]:MET:CE	2.61	0.48
4:A:905:EDO:H21	5:A:1128:HOH:O	2.13	0.48
1:B:800:TYR:HE1	1:B:803:ARG:CB	2.28	0.46
1:B:700:GLU:N	5:B:1012:HOH:O	2.48	0.46
1:B:757:SER:C	1:B:759:SER:N	2.69	0.46
4:A:905:EDO:C2	5:A:1128:HOH:O	2.63	0.46
1:A:748:LYS:HE2	5:A:1207:HOH:O	2.15	0.45
4:B:903:EDO:O2	5:B:1001:HOH:O	2.21	0.44
1:A:763:GLU:OE2	4:A:905:EDO:C1	2.66	0.44
1:A:763:GLU:OE2	4:A:905:EDO:O1	2.27	0.44
1:B:800:TYR:CE1	1:B:803:ARG:CB	3.00	0.44
1:B:785:LYS:HE3	5:B:1223:HOH:O	2.19	0.43
1:A:803[B]:ARG:HG3	5:A:1228:HOH:O	2.20	0.42
1:A:748:LYS:NZ	5:A:1022:HOH:O	2.53	0.40

All (3) symmetry-related close contacts are listed below. The label for Atom-2 includes the symmetry operator and encoded unit-cell translations to be applied.

Atom-1	Atom-2	Interatomic distance (Å)	Clash overlap (Å)
5:B:1254:HOH:O	5:B:1254:HOH:O[2_555]	1.33	0.87
5:B:1038:HOH:O	5:B:1038:HOH:O[2_556]	1.64	0.56
5:A:1044:HOH:O	5:A:1235:HOH:O[1_545]	1.89	0.31

5.3 Torsion angles [i](#)

5.3.1 Protein backbone [i](#)

In the following table, the Percentiles column shows the percent Ramachandran outliers of the chain as a percentile score with respect to all X-ray entries followed by that with respect to entries of similar resolution.

The Analysed column shows the number of residues for which the backbone conformation was analysed, and the total number of residues.

Mol	Chain	Analysed	Favoured	Allowed	Outliers	Percentiles	
1	A	186/180 (103%)	182 (98%)	4 (2%)	0	100	100
1	B	182/180 (101%)	172 (94%)	8 (4%)	2 (1%)	14	2
All	All	368/360 (102%)	354 (96%)	12 (3%)	2 (0%)	25	9

All (2) Ramachandran outliers are listed below:

Mol	Chain	Res	Type
1	B	757	SER
1	B	758	GLN

5.3.2 Protein sidechains [i](#)

In the following table, the Percentiles column shows the percent sidechain outliers of the chain as a percentile score with respect to all X-ray entries followed by that with respect to entries of similar resolution.

The Analysed column shows the number of residues for which the sidechain conformation was analysed, and the total number of residues.

Mol	Chain	Analysed	Rotameric	Outliers	Percentiles	
1	A	178/171 (104%)	177 (99%)	1 (1%)	86	69
1	B	165/171 (96%)	160 (97%)	5 (3%)	41	9
All	All	343/342 (100%)	337 (98%)	6 (2%)	71	28

All (6) residues with a non-rotameric sidechain are listed below:

Mol	Chain	Res	Type
1	A	738	ASN
1	B	711	TRP
1	B	850[A]	GLU
1	B	850[B]	GLU

Continued on next page...

Continued from previous page...

Mol	Chain	Res	Type
1	B	862[A]	ASP
1	B	862[B]	ASP

Sometimes sidechains can be flipped to improve hydrogen bonding and reduce clashes. There are no such sidechains identified.

5.3.3 RNA [i](#)

There are no RNA molecules in this entry.

5.4 Non-standard residues in protein, DNA, RNA chains [i](#)

There are no non-standard protein/DNA/RNA residues in this entry.

5.5 Carbohydrates [i](#)

There are no monosaccharides in this entry.

5.6 Ligand geometry [i](#)

Of 8 ligands modelled in this entry, 5 are monoatomic - leaving 3 for Mogul analysis.

In the following table, the Counts columns list the number of bonds (or angles) for which Mogul statistics could be retrieved, the number of bonds (or angles) that are observed in the model and the number of bonds (or angles) that are defined in the Chemical Component Dictionary. The Link column lists molecule types, if any, to which the group is linked. The Z score for a bond length (or angle) is the number of standard deviations the observed value is removed from the expected value. A bond length (or angle) with $|Z| > 2$ is considered an outlier worth inspection. RMSZ is the root-mean-square of all Z scores of the bond lengths (or angles).

Mol	Type	Chain	Res	Link	Bond lengths			Bond angles		
					Counts	RMSZ	# Z > 2	Counts	RMSZ	# Z > 2
3	MES	A	904	-	12,12,12	0.62	0	14,16,16	2.97	6 (42%)
4	EDO	A	905	-	3,3,3	0.48	0	2,2,2	0.17	0
4	EDO	B	903	-	3,3,3	0.85	0	2,2,2	0.73	0

In the following table, the Chirals column lists the number of chiral outliers, the number of chiral centers analysed, the number of these observed in the model and the number defined in the Chemical Component Dictionary. Similar counts are reported in the Torsion and Rings columns. '-' means no outliers of that kind were identified.

Mol	Type	Chain	Res	Link	Chirals	Torsions	Rings
3	MES	A	904	-	-	1/6/14/14	0/1/1/1
4	EDO	A	905	-	-	1/1/1/1	-
4	EDO	B	903	-	-	0/1/1/1	-

There are no bond length outliers.

All (6) bond angle outliers are listed below:

Mol	Chain	Res	Type	Atoms	Z	Observed(°)	Ideal(°)
3	A	904	MES	C5-N4-C3	6.94	124.45	108.83
3	A	904	MES	C2-C3-N4	4.93	117.57	110.10
3	A	904	MES	C6-O1-C2	4.63	125.34	109.89
3	A	904	MES	C7-N4-C3	3.97	121.39	111.23
3	A	904	MES	C6-C5-N4	2.14	113.35	110.10
3	A	904	MES	O1S-S-C8	2.07	109.40	106.92

There are no chirality outliers.

All (2) torsion outliers are listed below:

Mol	Chain	Res	Type	Atoms
3	A	904	MES	C8-C7-N4-C3
4	A	905	EDO	O1-C1-C2-O2

There are no ring outliers.

3 monomers are involved in 8 short contacts:

Mol	Chain	Res	Type	Clashes	Symm-Clashes
3	A	904	MES	3	0
4	A	905	EDO	4	0
4	B	903	EDO	1	0

5.7 Other polymers [i](#)

There are no such residues in this entry.

5.8 Polymer linkage issues [i](#)

There are no chain breaks in this entry.

6 Fit of model and data

6.1 Protein, DNA and RNA chains

In the following table, the column labelled ‘#RSRZ> 2’ contains the number (and percentage) of RSRZ outliers, followed by percent RSRZ outliers for the chain as percentile scores relative to all X-ray entries and entries of similar resolution. The OWAB column contains the minimum, median, 95th percentile and maximum values of the occupancy-weighted average B-factor per residue. The column labelled ‘Q< 0.9’ lists the number of (and percentage) of residues with an average occupancy less than 0.9.

Mol	Chain	Analysed	<RSRZ>	#RSRZ>2	OWAB(Å ²)	Q<0.9
1	A	178/180 (98%)	0.09	8 (4%) 33 36	12, 21, 53, 90	0
1	B	177/180 (98%)	0.52	19 (10%) 6 6	14, 22, 68, 136	0
All	All	355/360 (98%)	0.30	27 (7%) 13 16	12, 22, 66, 136	0

All (27) RSRZ outliers are listed below:

Mol	Chain	Res	Type	RSRZ
1	B	757	SER	11.1
1	A	735	ALA	8.1
1	B	806	SER	7.9
1	B	759	SER	7.5
1	B	804	GLU	6.2
1	B	758	GLN	6.1
1	B	876	GLU	5.5
1	B	805	GLY	5.2
1	B	760	GLY	4.7
1	B	800	TYR	4.7
1	B	756	GLU	4.5
1	B	711	TRP	4.4
1	B	803	ARG	4.3
1	B	735	ALA	4.1
1	A	736	ASN	3.7
1	B	875	GLN	3.5
1	A	878	SER	3.3
1	B	736	ASN	3.3
1	B	738	ASN	3.1
1	B	755	PRO	2.9
1	A	782	LEU	2.7
1	A	737	LYS	2.6
1	B	810	GLN	2.5
1	B	783	LEU	2.4

Continued on next page...

Continued from previous page...

Mol	Chain	Res	Type	RSRZ
1	A	703	ASN	2.3
1	A	783	LEU	2.2
1	A	739	PRO	2.1

6.2 Non-standard residues in protein, DNA, RNA chains [i](#)

There are no non-standard protein/DNA/RNA residues in this entry.

6.3 Carbohydrates [i](#)

There are no monosaccharides in this entry.

6.4 Ligands [i](#)

In the following table, the Atoms column lists the number of modelled atoms in the group and the number defined in the chemical component dictionary. The B-factors column lists the minimum, median, 95th percentile and maximum values of B factors of atoms in the group. The column labelled 'Q< 0.9' lists the number of atoms with occupancy less than 0.9.

Mol	Type	Chain	Res	Atoms	RSCC	RSR	B-factors(Å ²)	Q<0.9
2	ZN	A	903	1/1	0.84	0.52	72,72,72,72	1
4	EDO	A	905	4/4	0.89	0.30	46,51,53,62	0
2	ZN	A	902	1/1	0.93	0.07	28,28,28,28	0
4	EDO	B	903	4/4	0.96	0.06	25,26,27,28	0
2	ZN	A	901	1/1	0.98	0.06	22,22,22,22	0
3	MES	A	904	12/12	0.98	0.15	15,17,20,21	12
2	ZN	B	902	1/1	0.99	0.04	20,20,20,20	0
2	ZN	B	901	1/1	0.99	0.06	18,18,18,18	0

6.5 Other polymers [i](#)

There are no such residues in this entry.