



Full wwPDB X-ray Structure Validation Report ⓘ

Jun 22, 2024 – 06:59 PM EDT

PDB ID : 5NDZ
Title : Crystal structure of a thermostabilised human protease-activated receptor-2 (PAR2) in complex with AZ3451 at 3.6 angstrom resolution
Authors : Cheng, R.K.Y.; Fiez-Vandal, C.; Schlenker, O.; Edman, K.; Aggeler, B.; Brown, D.G.; Brown, G.; Cooke, R.M.; Dumelin, C.E.; Dore, A.S.; Geschwindner, S.; Grebner, C.; Hermansson, N.-O.; Jazayeri, A.; Johansson, P.; Leong, L.; Prihandoko, R.; Rappas, M.; Soutter, H.; Snijder, A.; Sundstrom, L.; Tehan, B.; Thornton, P.; Troast, D.; Wiggin, G.; Zhukov, A.; Marshall, F.H.; Dekker, N.
Deposited on : 2017-03-09
Resolution : 3.60 Å(reported)

This is a Full wwPDB X-ray Structure Validation Report for a publicly released PDB entry.

We welcome your comments at validation@mail.wwpdb.org

A user guide is available at

<https://www.wwpdb.org/validation/2017/XrayValidationReportHelp>

with specific help available everywhere you see the ⓘ symbol.

The types of validation reports are described at

<http://www.wwpdb.org/validation/2017/FAQs#types>.

The following versions of software and data (see [references ⓘ](#)) were used in the production of this report:

MolProbity : 4.02b-467
Mogul : 1.8.5 (274361), CSD as541be (2020)
Xtriage (Phenix) : 1.13
EDS : 2.37.1
buster-report : 1.1.7 (2018)
Percentile statistics : 20191225.v01 (using entries in the PDB archive December 25th 2019)
Refmac : 5.8.0158

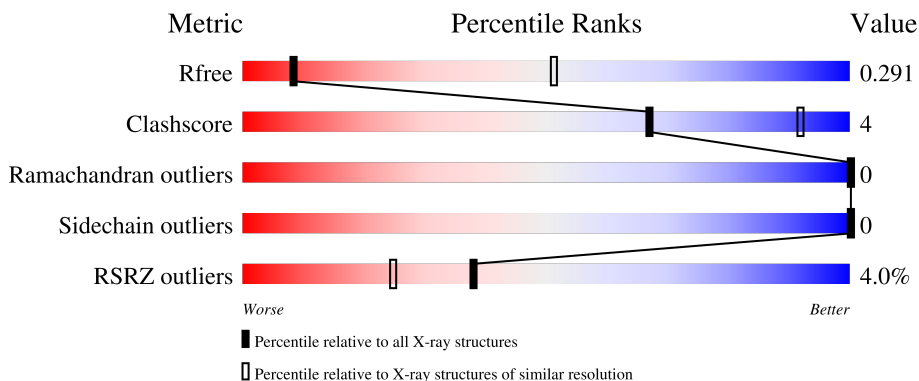
1 Overall quality at a glance

The following experimental techniques were used to determine the structure:

X-RAY DIFFRACTION

The reported resolution of this entry is 3.60 Å.

Percentile scores (ranging between 0-100) for global validation metrics of the entry are shown in the following graphic. The table shows the number of entries on which the scores are based.



Metric	Whole archive (#Entries)	Similar resolution (#Entries, resolution range(Å))
R_{free}	130704	1257 (3.70-3.50)
Clashscore	141614	1353 (3.70-3.50)
Ramachandran outliers	138981	1307 (3.70-3.50)
Sidechain outliers	138945	1307 (3.70-3.50)
RSRZ outliers	127900	1161 (3.70-3.50)

The table below summarises the geometric issues observed across the polymeric chains and their fit to the electron density. The red, orange, yellow and green segments of the lower bar indicate the fraction of residues that contain outliers for ≥ 3 , 2, 1 and 0 types of geometric quality criteria respectively. A grey segment represents the fraction of residues that are not modelled. The numeric value for each fraction is indicated below the corresponding segment, with a dot representing fractions $\leq 5\%$. The upper red bar (where present) indicates the fraction of residues that have poor fit to the electron density. The numeric value is given above the bar.

Mol	Chain	Length	Quality of chain
1	A	619	

CCP4 : 7.0.044 (Gargrove)
 Ideal geometry (proteins) : Engh & Huber (2001)
 Ideal geometry (DNA, RNA) : Parkinson et al. (1996)
 Validation Pipeline (wwPDB-VP) : 2.37.1

2 Entry composition

There are 4 unique types of molecules in this entry. The entry contains 4462 atoms, of which 0 are hydrogens and 0 are deuteriums.

In the tables below, the ZeroOcc column contains the number of atoms modelled with zero occupancy, the AltConf column contains the number of residues with at least one atom in alternate conformation and the Trace column contains the number of residues modelled with at most 2 atoms.

- Molecule 1 is a protein called Lysozyme,Proteinase-activated receptor 2,Soluble cytochrome b562,Proteinase-activated receptor 2.

Mol	Chain	Residues	Atoms					ZeroOcc	AltConf	Trace
			Total	C	N	O	S			
1	A	556	4421	2880	739	782	20	0	0	0

There are 55 discrepancies between the modelled and reference sequences:

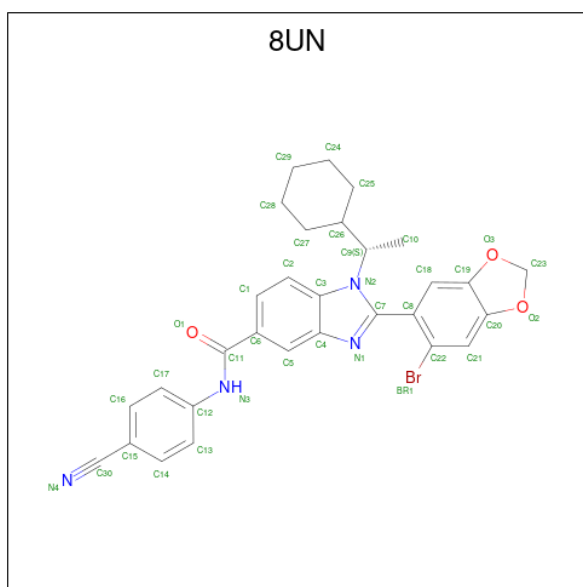
Chain	Residue	Modelled	Actual	Comment	Reference
A	979	MET	-	initiating methionine	UNP D9IEF7
A	980	VAL	-	expression tag	UNP D9IEF7
A	981	SER	-	expression tag	UNP D9IEF7
A	982	ALA	-	expression tag	UNP D9IEF7
A	983	ILE	-	expression tag	UNP D9IEF7
A	984	VAL	-	expression tag	UNP D9IEF7
A	985	LEU	-	expression tag	UNP D9IEF7
A	986	TYR	-	expression tag	UNP D9IEF7
A	987	VAL	-	expression tag	UNP D9IEF7
A	988	LEU	-	expression tag	UNP D9IEF7
A	989	LEU	-	expression tag	UNP D9IEF7
A	990	ALA	-	expression tag	UNP D9IEF7
A	991	ALA	-	expression tag	UNP D9IEF7
A	992	ALA	-	expression tag	UNP D9IEF7
A	993	ALA	-	expression tag	UNP D9IEF7
A	994	HIS	-	expression tag	UNP D9IEF7
A	995	SER	-	expression tag	UNP D9IEF7
A	996	ALA	-	expression tag	UNP D9IEF7
A	997	PHE	-	expression tag	UNP D9IEF7
A	998	ALA	-	expression tag	UNP D9IEF7
A	999	ALA	-	expression tag	UNP D9IEF7
A	1000	ALA	-	expression tag	UNP D9IEF7
A	1001	SER	-	expression tag	UNP D9IEF7
A	1054	THR	CYS	conflict	UNP D9IEF7
A	1097	ALA	CYS	conflict	UNP D9IEF7
A	1162	ILE	-	linker	UNP D9IEF7

Continued on next page...

Continued from previous page...

Chain	Residue	Modelled	Actual	Comment	Reference
A	1163	TYR	-	linker	UNP D9IEF7
A	1164	GLU	-	linker	UNP D9IEF7
A	1165	PHE	-	linker	UNP D9IEF7
A	89	ALA	GLY	engineered mutation	UNP P55085
A	108	ALA	HIS	engineered mutation	UNP P55085
A	157	ALA	GLY	engineered mutation	UNP P55085
A	166	LEU	MET	engineered mutation	UNP P55085
A	174	ALA	TYR	engineered mutation	UNP P55085
A	176	GLU	VAL	engineered mutation	UNP P55085
A	222	GLN	ASN	engineered mutation	UNP P55085
A	268	ALA	MET	engineered mutation	UNP P55085
A	2006	TRP	MET	conflict	UNP P0ABE7
A	2101	ILE	HIS	conflict	UNP P0ABE7
A	2105	LEU	-	linker	UNP P0ABE7
A	289	ALA	ILE	engineered mutation	UNP P55085
A	293	ALA	LEU	engineered mutation	UNP P55085
A	378	ALA	-	expression tag	UNP P55085
A	379	ALA	-	expression tag	UNP P55085
A	380	ALA	-	expression tag	UNP P55085
A	381	HIS	-	expression tag	UNP P55085
A	382	HIS	-	expression tag	UNP P55085
A	383	HIS	-	expression tag	UNP P55085
A	384	HIS	-	expression tag	UNP P55085
A	385	HIS	-	expression tag	UNP P55085
A	386	HIS	-	expression tag	UNP P55085
A	387	HIS	-	expression tag	UNP P55085
A	388	HIS	-	expression tag	UNP P55085
A	389	HIS	-	expression tag	UNP P55085
A	390	HIS	-	expression tag	UNP P55085

- Molecule 2 is 2-(6-bromanyl-1,3-benzodioxol-5-yl)- {N}-(4-cyanophenyl)-1-[(1 {S})-1-cyclohexylethyl]benzimidazole-5-carboxamide (three-letter code: 8UN) (formula: C₃₀H₂₇BrN₄O₃).



Mol	Chain	Residues	Atoms					ZeroOcc	AltConf
			Total	Br	C	N	O		
2	A	1	38	1	30	4	3	0	0

- Molecule 3 is SODIUM ION (three-letter code: NA) (formula: Na).

Mol	Chain	Residues	Atoms		ZeroOcc	AltConf
			Total	Na		
3	A	1	1	1	0	0

- Molecule 4 is water.

Mol	Chain	Residues	Atoms		ZeroOcc	AltConf
			Total	O		
4	A	2	2	2	0	0

4 Data and refinement statistics

Property	Value	Source
Space group	P 1	Depositor
Cell constants a, b, c, α , β , γ	37.10Å 62.60Å 86.47Å 104.38° 91.66° 96.40°	Depositor
Resolution (Å)	34.44 – 3.60 34.44 – 3.60	Depositor EDS
% Data completeness (in resolution range)	94.0 (34.44-3.60) 94.0 (34.44-3.60)	Depositor EDS
R_{merge}	0.40	Depositor
R_{sym}	(Not available)	Depositor
$\langle I/\sigma(I) \rangle$ ¹	1.82 (at 3.56Å)	Xtrriage
Refinement program	PHENIX (1.10.1_2155: ???)	Depositor
R, R_{free}	0.244 , 0.291 0.244 , 0.291	Depositor DCC
R_{free} test set	382 reflections (4.69%)	wwPDB-VP
Wilson B-factor (Å ²)	57.6	Xtrriage
Anisotropy	0.870	Xtrriage
Bulk solvent k_{sol} (e/Å ³), B_{sol} (Å ²)	0.30 , 41.0	EDS
L-test for twinning ²	$\langle L \rangle = 0.46$, $\langle L^2 \rangle = 0.29$	Xtrriage
Estimated twinning fraction	No twinning to report.	Xtrriage
F_o, F_c correlation	0.86	EDS
Total number of atoms	4462	wwPDB-VP
Average B, all atoms (Å ²)	56.0	wwPDB-VP

Xtrriage's analysis on translational NCS is as follows: *The largest off-origin peak in the Patterson function is 7.62% of the height of the origin peak. No significant pseudotranslation is detected.*

¹Intensities estimated from amplitudes.

²Theoretical values of $\langle |L| \rangle$, $\langle L^2 \rangle$ for acentric reflections are 0.5, 0.333 respectively for untwinned datasets, and 0.375, 0.2 for perfectly twinned datasets.

5 Model quality [i](#)

5.1 Standard geometry [i](#)

Bond lengths and bond angles in the following residue types are not validated in this section: NA, 8UN

The Z score for a bond length (or angle) is the number of standard deviations the observed value is removed from the expected value. A bond length (or angle) with $|Z| > 5$ is considered an outlier worth inspection. RMSZ is the root-mean-square of all Z scores of the bond lengths (or angles).

Mol	Chain	Bond lengths		Bond angles	
		RMSZ	# Z >5	RMSZ	# Z >5
1	A	0.24	0/4515	0.39	4/6124 (0.1%)

There are no bond length outliers.

All (4) bond angle outliers are listed below:

Mol	Chain	Res	Type	Atoms	Z	Observed(°)	Ideal(°)
1	A	1165	PHE	O-C-N	6.20	132.62	122.70
1	A	1165	PHE	CA-C-N	-5.85	104.33	117.20
1	A	1165	PHE	C-N-CA	-5.39	108.23	121.70
1	A	2105	LEU	O-C-N	-5.27	114.27	122.70

There are no chirality outliers.

There are no planarity outliers.

5.2 Too-close contacts [i](#)

In the following table, the Non-H and H(model) columns list the number of non-hydrogen atoms and hydrogen atoms in the chain respectively. The H(added) column lists the number of hydrogen atoms added and optimized by MolProbity. The Clashes column lists the number of clashes within the asymmetric unit, whereas Symm-Clashes lists symmetry-related clashes.

Mol	Chain	Non-H	H(model)	H(added)	Clashes	Symm-Clashes
1	A	4421	0	4534	35	0
2	A	38	0	0	2	0
3	A	1	0	0	0	0
4	A	2	0	0	0	0
All	All	4462	0	4534	35	0

The all-atom clashscore is defined as the number of clashes found per 1000 atoms (including

hydrogen atoms). The all-atom clashscore for this structure is 4.

All (35) close contacts within the same asymmetric unit are listed below, sorted by their clash magnitude.

Atom-1	Atom-2	Interatomic distance (Å)	Clash overlap (Å)
1:A:2052:PRO:O	1:A:2061:ARG:NH2	2.32	0.62
1:A:99:VAL:HA	1:A:103:ARG:HB2	1.81	0.61
1:A:173:ARG:HD2	1:A:347:VAL:HG13	1.84	0.59
1:A:2009:LEU:HD12	1:A:2032:MET:HG3	1.84	0.58
1:A:1016:LYS:HG2	1:A:1057:VAL:HG22	1.85	0.57
1:A:1087:VAL:HG21	1:A:1118:LEU:HB3	1.87	0.57
1:A:225:THR:HG21	1:A:229:VAL:HB	1.87	0.56
1:A:2022:ALA:HB2	1:A:2083:VAL:HG22	1.89	0.55
1:A:2052:PRO:HA	1:A:2057:MET:HG3	1.92	0.52
1:A:1026:THR:HG22	1:A:1032:LEU:HA	1.93	0.51
1:A:60:SER:HB3	1:A:220:ALA:HB3	1.93	0.51
1:A:1126:TRP:HB3	1:A:1154:ARG:HA	1.93	0.51
1:A:149:ASN:ND2	1:A:210:TYR:O	2.37	0.50
1:A:1142:THR:HB	1:A:1145:ARG:HB3	1.93	0.50
1:A:2047:LEU:HB3	1:A:2050:LYS:HB2	1.95	0.49
1:A:157:ALA:HB1	2:A:2201:8UN:C20	2.44	0.48
1:A:157:ALA:HB1	2:A:2201:8UN:C21	2.45	0.47
1:A:2033:ARG:NH1	1:A:2072:ASP:OD1	2.47	0.47
1:A:143:TYR:HB3	1:A:147:LEU:HD23	1.96	0.46
1:A:74:THR:HA	1:A:78:LEU:HG	1.98	0.46
1:A:161:CYS:SG	1:A:202:ILE:HD12	2.55	0.46
1:A:202:ILE:HA	1:A:205:VAL:HG12	1.98	0.46
1:A:64:PHE:CE2	1:A:323:TYR:HB3	2.51	0.45
1:A:1092:ASP:OD1	1:A:1095:ARG:NH1	2.42	0.45
1:A:236:VAL:HG12	1:A:315:LYS:HB2	2.00	0.43
1:A:237:GLY:O	1:A:241:ASN:ND2	2.51	0.43
1:A:152:ILE:HD11	1:A:227:HIS:HB2	2.00	0.43
1:A:1088:TYR:HD1	1:A:1099:LEU:HD23	1.83	0.43
1:A:253:PHE:HB3	1:A:254:PRO:HD3	2.02	0.42
1:A:1081:ASN:HB3	1:A:1084:LEU:HB2	2.01	0.42
1:A:176:GLU:O	1:A:180:PRO:HB3	2.20	0.42
1:A:247:ALA:O	1:A:251:PHE:HB3	2.20	0.42
1:A:1135:LYS:HE2	1:A:1135:LYS:HB3	1.88	0.41
1:A:73:LEU:O	1:A:77:PHE:HB3	2.20	0.41
1:A:1081:ASN:HB2	1:A:1108:GLU:OE2	2.21	0.41

There are no symmetry-related clashes.

5.3 Torsion angles [i](#)

5.3.1 Protein backbone [i](#)

In the following table, the Percentiles column shows the percent Ramachandran outliers of the chain as a percentile score with respect to all X-ray entries followed by that with respect to entries of similar resolution.

The Analysed column shows the number of residues for which the backbone conformation was analysed, and the total number of residues.

Mol	Chain	Analysed	Favoured	Allowed	Outliers	Percentiles
1	A	550/619 (89%)	532 (97%)	18 (3%)	0	100 100

There are no Ramachandran outliers to report.

5.3.2 Protein sidechains [i](#)

In the following table, the Percentiles column shows the percent sidechain outliers of the chain as a percentile score with respect to all X-ray entries followed by that with respect to entries of similar resolution.

The Analysed column shows the number of residues for which the sidechain conformation was analysed, and the total number of residues.

Mol	Chain	Analysed	Rotameric	Outliers	Percentiles
1	A	472/521 (91%)	472 (100%)	0	100 100

There are no protein residues with a non-rotameric sidechain to report.

Sometimes sidechains can be flipped to improve hydrogen bonding and reduce clashes. There are no such sidechains identified.

5.3.3 RNA [i](#)

There are no RNA molecules in this entry.

5.4 Non-standard residues in protein, DNA, RNA chains [i](#)

There are no non-standard protein/DNA/RNA residues in this entry.

5.5 Carbohydrates [i](#)

There are no monosaccharides in this entry.

5.6 Ligand geometry [i](#)

Of 2 ligands modelled in this entry, 1 is monoatomic - leaving 1 for Mogul analysis.

In the following table, the Counts columns list the number of bonds (or angles) for which Mogul statistics could be retrieved, the number of bonds (or angles) that are observed in the model and the number of bonds (or angles) that are defined in the Chemical Component Dictionary. The Link column lists molecule types, if any, to which the group is linked. The Z score for a bond length (or angle) is the number of standard deviations the observed value is removed from the expected value. A bond length (or angle) with $|Z| > 2$ is considered an outlier worth inspection. RMSZ is the root-mean-square of all Z scores of the bond lengths (or angles).

Mol	Type	Chain	Res	Link	Bond lengths			Bond angles		
					Counts	RMSZ	# Z > 2	Counts	RMSZ	# Z > 2
2	8UN	A	2201	-	38,43,43	1.19	3 (7%)	54,62,62	0.93	3 (5%)

In the following table, the Chirals column lists the number of chiral outliers, the number of chiral centers analysed, the number of these observed in the model and the number defined in the Chemical Component Dictionary. Similar counts are reported in the Torsion and Rings columns. '-' means no outliers of that kind were identified.

Mol	Type	Chain	Res	Link	Chirals	Torsions	Rings
2	8UN	A	2201	-	-	5/20/36/36	0/6/6/6

All (3) bond length outliers are listed below:

Mol	Chain	Res	Type	Atoms	Z	Observed(Å)	Ideal(Å)
2	A	2201	8UN	C8-C22	3.15	1.42	1.39
2	A	2201	8UN	C5-C6	2.76	1.42	1.37
2	A	2201	8UN	C2-C1	2.27	1.41	1.36

All (3) bond angle outliers are listed below:

Mol	Chain	Res	Type	Atoms	Z	Observed(°)	Ideal(°)
2	A	2201	8UN	C21-C22-C8	-2.83	120.60	122.59
2	A	2201	8UN	C18-C8-C22	2.61	119.44	117.38
2	A	2201	8UN	C8-C7-N1	-2.25	119.07	122.72

There are no chirality outliers.

All (5) torsion outliers are listed below:

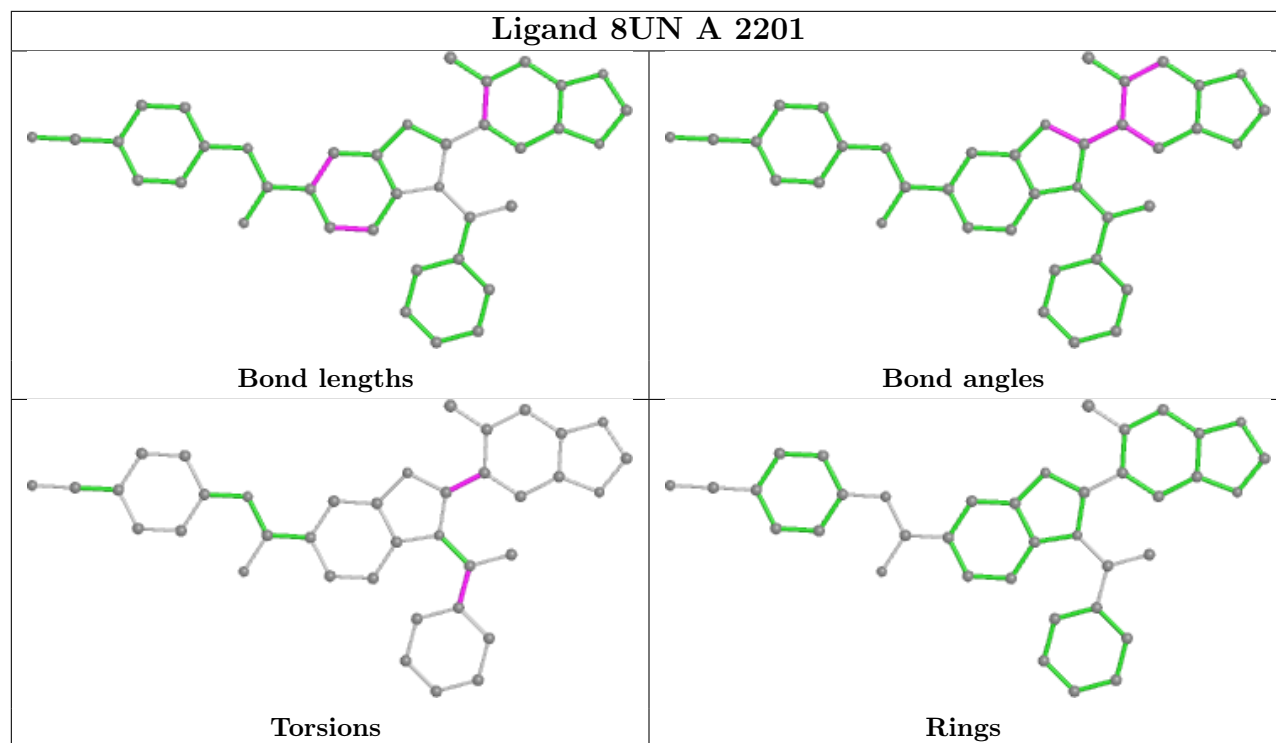
Mol	Chain	Res	Type	Atoms
2	A	2201	8UN	N1-C7-C8-C22
2	A	2201	8UN	N1-C7-C8-C18
2	A	2201	8UN	C27-C26-C9-C10
2	A	2201	8UN	C25-C26-C9-N2
2	A	2201	8UN	C27-C26-C9-N2

There are no ring outliers.

1 monomer is involved in 2 short contacts:

Mol	Chain	Res	Type	Clashes	Symm-Clashes
2	A	2201	8UN	2	0

The following is a two-dimensional graphical depiction of Mogul quality analysis of bond lengths, bond angles, torsion angles, and ring geometry for all instances of the Ligand of Interest. In addition, ligands with molecular weight > 250 and outliers as shown on the validation Tables will also be included. For torsion angles, if less than 5% of the Mogul distribution of torsion angles is within 10 degrees of the torsion angle in question, then that torsion angle is considered an outlier. Any bond that is central to one or more torsion angles identified as an outlier by Mogul will be highlighted in the graph. For rings, the root-mean-square deviation (RMSD) between the ring in question and similar rings identified by Mogul is calculated over all ring torsion angles. If the average RMSD is greater than 60 degrees and the minimal RMSD between the ring in question and any Mogul-identified rings is also greater than 60 degrees, then that ring is considered an outlier. The outliers are highlighted in purple. The color gray indicates Mogul did not find sufficient equivalents in the CSD to analyse the geometry.



5.7 Other polymers [i](#)

There are no such residues in this entry.

5.8 Polymer linkage issues [i](#)

There are no chain breaks in this entry.

6 Fit of model and data [i](#)

6.1 Protein, DNA and RNA chains [i](#)

In the following table, the column labelled ‘#RSRZ > 2’ contains the number (and percentage) of RSRZ outliers, followed by percent RSRZ outliers for the chain as percentile scores relative to all X-ray entries and entries of similar resolution. The OWAB column contains the minimum, median, 95th percentile and maximum values of the occupancy-weighted average B-factor per residue. The column labelled ‘Q < 0.9’ lists the number of (and percentage) of residues with an average occupancy less than 0.9.

Mol	Chain	Analysed	<RSRZ>	#RSRZ>2	OWAB(Å ²)	Q<0.9
1	A	556/619 (89%)	-0.07	22 (3%) 38 25	23, 50, 110, 136	0

All (22) RSRZ outliers are listed below:

Mol	Chain	Res	Type	RSRZ
1	A	2017	GLU	4.6
1	A	1019	LYS	3.5
1	A	1063	ALA	3.3
1	A	1035	LYS	3.3
1	A	2020	ASP	3.3
1	A	1062	GLU	3.1
1	A	1048	LYS	3.0
1	A	1056	GLY	2.7
1	A	2029	LEU	2.7
1	A	1067	PHE	2.6
1	A	2024	GLN	2.5
1	A	1001	SER	2.4
1	A	1017	ILE	2.4
1	A	1053	ASN	2.4
1	A	283	LYS	2.3
1	A	1055	ASN	2.3
1	A	105	LYS	2.3
1	A	1054	THR	2.1
1	A	1066	LEU	2.1
1	A	2065	ASP	2.0
1	A	1060	LYS	2.0
1	A	106	LYS	2.0

6.2 Non-standard residues in protein, DNA, RNA chains [i](#)

There are no non-standard protein/DNA/RNA residues in this entry.

6.3 Carbohydrates [i](#)

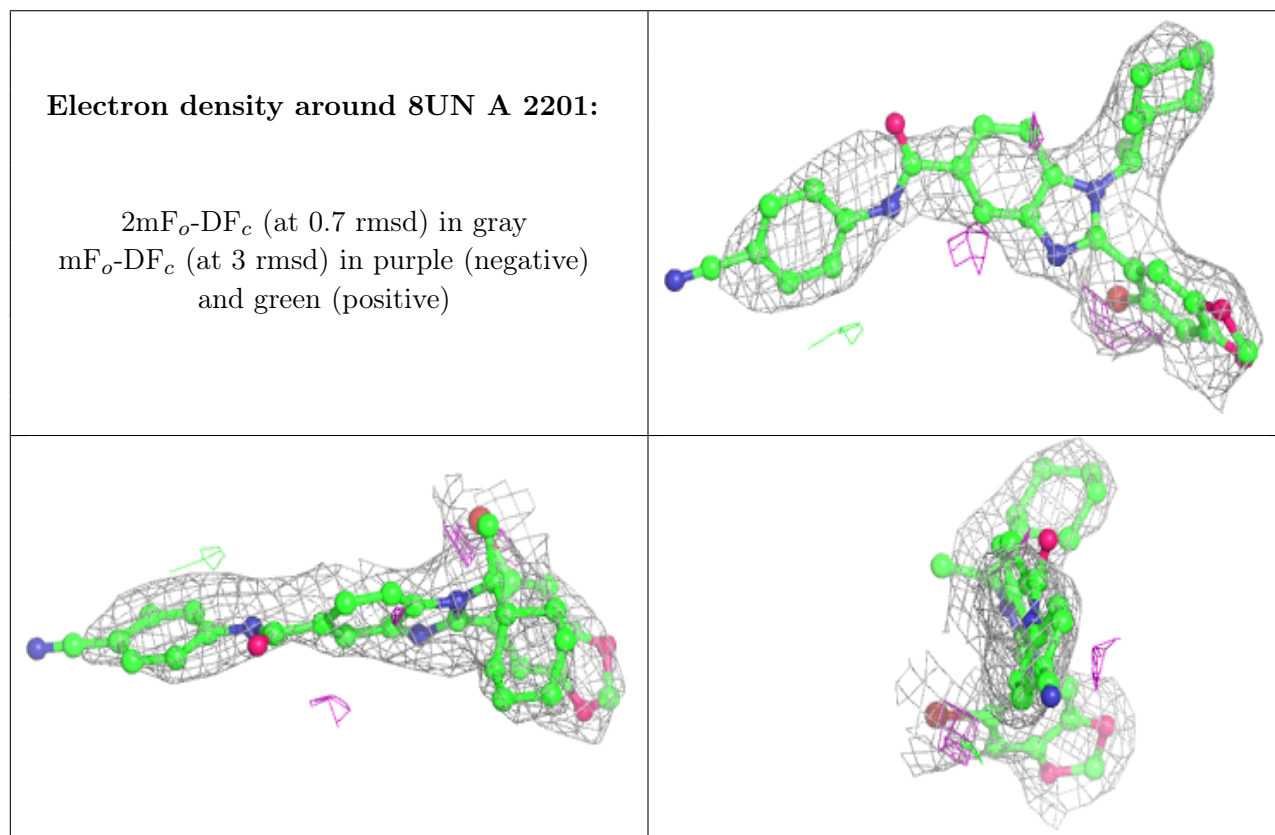
There are no monosaccharides in this entry.

6.4 Ligands [i](#)

In the following table, the Atoms column lists the number of modelled atoms in the group and the number defined in the chemical component dictionary. The B-factors column lists the minimum, median, 95th percentile and maximum values of B factors of atoms in the group. The column labelled 'Q<0.9' lists the number of atoms with occupancy less than 0.9.

Mol	Type	Chain	Res	Atoms	RSCC	RSR	B-factors(\AA^2)	Q<0.9
3	NA	A	2202	1/1	0.74	0.22	31,31,31,31	0
2	8UN	A	2201	38/38	0.92	0.32	38,49,75,91	0

The following is a graphical depiction of the model fit to experimental electron density of all instances of the Ligand of Interest. In addition, ligands with molecular weight > 250 and outliers as shown on the geometry validation Tables will also be included. Each fit is shown from different orientation to approximate a three-dimensional view.



6.5 Other polymers [i](#)

There are no such residues in this entry.