



Full wwPDB X-ray Structure Validation Report ⓘ

Mar 24, 2022 – 12:22 pm GMT

PDB ID : 5M11
Title : Structural and functional probing of PorZ, an essential bacterial surface component of the type-IX secretion system of human oral-microbiomic *Porphyromonas gingivalis*.
Authors : Lasica, A.M.; Goulas, T.; Mizgalska, D.; Zhou, X.; Ksiazek, M.; Madej, M.; Guo, Y.; Guevara, T.; Nowak, M.; Potempa, B.; Goel, A.; Sztukowska, M.; Prabhakar, A.T.; Bzowska, M.; Widziolek, M.; Thogersen, I.B.; Enghild, J.J.; Simonian, M.; Kulczyk, A.W.; Nguyen, K.-A.; Potempa, J.; Gomis-Ruth, F.X.
Deposited on : 2016-10-07
Resolution : 2.90 Å(reported)

This is a Full wwPDB X-ray Structure Validation Report for a publicly released PDB entry.

We welcome your comments at validation@mail.wwpdb.org

A user guide is available at

<https://www.wwpdb.org/validation/2017/XrayValidationReportHelp>

with specific help available everywhere you see the ⓘ symbol.

The following versions of software and data (see [references ⓘ](#)) were used in the production of this report:

MolProbity : 4.02b-467
Mogul : 1.8.4, CSD as541be (2020)
Xtriage (Phenix) : 1.13
EDS : 2.27
Percentile statistics : 20191225.v01 (using entries in the PDB archive December 25th 2019)
Refmac : 5.8.0267
CCP4 : 7.1.010 (Gargrove)
Ideal geometry (proteins) : Engh & Huber (2001)
Ideal geometry (DNA, RNA) : Parkinson et al. (1996)
Validation Pipeline (wwPDB-VP) : 2.27

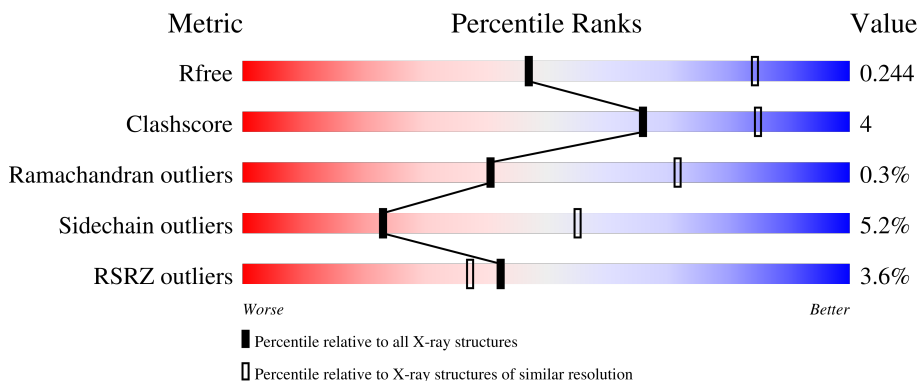
1 Overall quality at a glance

The following experimental techniques were used to determine the structure:

X-RAY DIFFRACTION

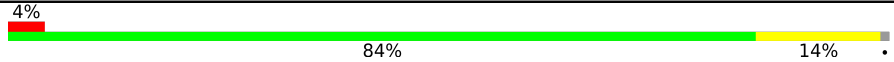
The reported resolution of this entry is 2.90 Å.

Percentile scores (ranging between 0-100) for global validation metrics of the entry are shown in the following graphic. The table shows the number of entries on which the scores are based.



Metric	Whole archive (#Entries)	Similar resolution (#Entries, resolution range(Å))
R_{free}	130704	1957 (2.90-2.90)
Clashscore	141614	2172 (2.90-2.90)
Ramachandran outliers	138981	2115 (2.90-2.90)
Sidechain outliers	138945	2117 (2.90-2.90)
RSRZ outliers	127900	1906 (2.90-2.90)

The table below summarises the geometric issues observed across the polymeric chains and their fit to the electron density. The red, orange, yellow and green segments of the lower bar indicate the fraction of residues that contain outliers for ≥ 3 , 2, 1 and 0 types of geometric quality criteria respectively. A grey segment represents the fraction of residues that are not modelled. The numeric value for each fraction is indicated below the corresponding segment, with a dot representing fractions $\leq 5\%$. The upper red bar (where present) indicates the fraction of residues that have poor fit to the electron density. The numeric value is given above the bar.

Mol	Chain	Length	Quality of chain
1	A	758	

2 Entry composition i

There are 9 unique types of molecules in this entry. The entry contains 5783 atoms, of which 0 are hydrogens and 0 are deuteriums.

In the tables below, the ZeroOcc column contains the number of atoms modelled with zero occupancy, the AltConf column contains the number of residues with at least one atom in alternate conformation and the Trace column contains the number of residues modelled with at most 2 atoms.

- Molecule 1 is a protein called Immunoreactive 84kD antigen PG93.

Mol	Chain	Residues	Atoms					ZeroOcc	AltConf	Trace
			Total	C	N	O	S			
1	A	748	5678	3602	956	1103	17	0	0	0

There are 10 discrepancies between the modelled and reference sequences:

Chain	Residue	Modelled	Actual	Comment	Reference
A	19	GLY	-	expression tag	UNP Q9S3Q8
A	20	PRO	-	expression tag	UNP Q9S3Q8
A	21	LEU	-	expression tag	UNP Q9S3Q8
A	22	GLY	-	expression tag	UNP Q9S3Q8
A	23	SER	-	expression tag	UNP Q9S3Q8
A	24	PRO	-	expression tag	UNP Q9S3Q8
A	25	GLU	-	expression tag	UNP Q9S3Q8
A	26	PHE	-	expression tag	UNP Q9S3Q8
A	27	PRO	-	expression tag	UNP Q9S3Q8
A	28	GLY	-	expression tag	UNP Q9S3Q8

- Molecule 2 is CALCIUM ION (three-letter code: CA) (formula: Ca).

Mol	Chain	Residues	Atoms		ZeroOcc	AltConf
2	A	4	Total	Ca	0	0
			4	4		

- Molecule 3 is ZINC ION (three-letter code: ZN) (formula: Zn).

Mol	Chain	Residues	Atoms		ZeroOcc	AltConf
3	A	8	Total	Zn	0	0
			8	8		

- Molecule 4 is CACODYLATE ION (three-letter code: CAC) (formula: C₂H₆AsO₂).

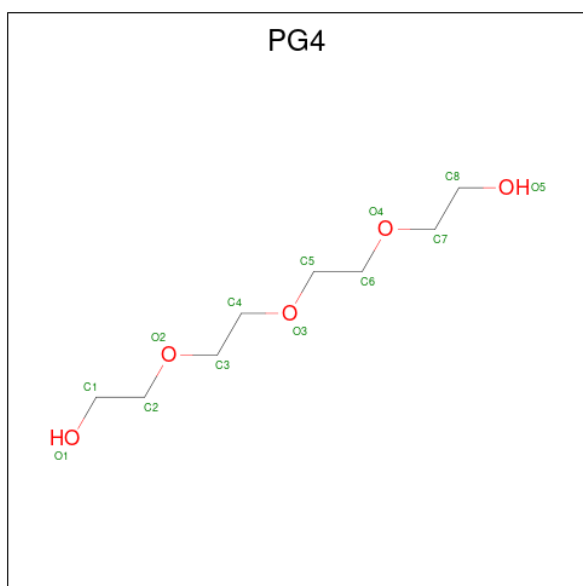


Mol	Chain	Residues	Atoms				ZeroOcc	AltConf
			Total	As	C	O		
4	A	1	5	1	2	2	0	0

- Molecule 5 is CHLORIDE ION (three-letter code: CL) (formula: Cl).

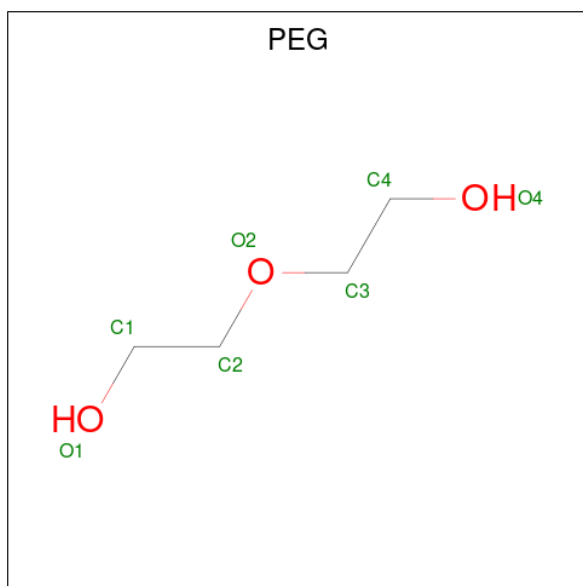
Mol	Chain	Residues	Atoms		ZeroOcc	AltConf
			Total	Cl		
5	A	1	1	1	0	0

- Molecule 6 is TETRAETHYLENE GLYCOL (three-letter code: PG4) (formula: C₈H₁₈O₅).



Mol	Chain	Residues	Atoms			ZeroOcc	AltConf
6	A	1	Total	C	O	0	0
			13	8	5		

- Molecule 7 is DI(HYDROXYETHYL)ETHER (three-letter code: PEG) (formula: $C_4H_{10}O_3$).



Mol	Chain	Residues	Atoms			ZeroOcc	AltConf
7	A	1	Total	C	O	0	0
			7	4	3		

- Molecule 8 is GLYCEROL (three-letter code: GOL) (formula: $C_3H_8O_3$).



Mol	Chain	Residues	Atoms	ZeroOcc	AltConf
8	A	1	Total C O 6 3 3	0	0
8	A	1	Total C O 6 3 3	0	0
8	A	1	Total C O 6 3 3	0	0
8	A	1	Total C O 6 3 3	0	0

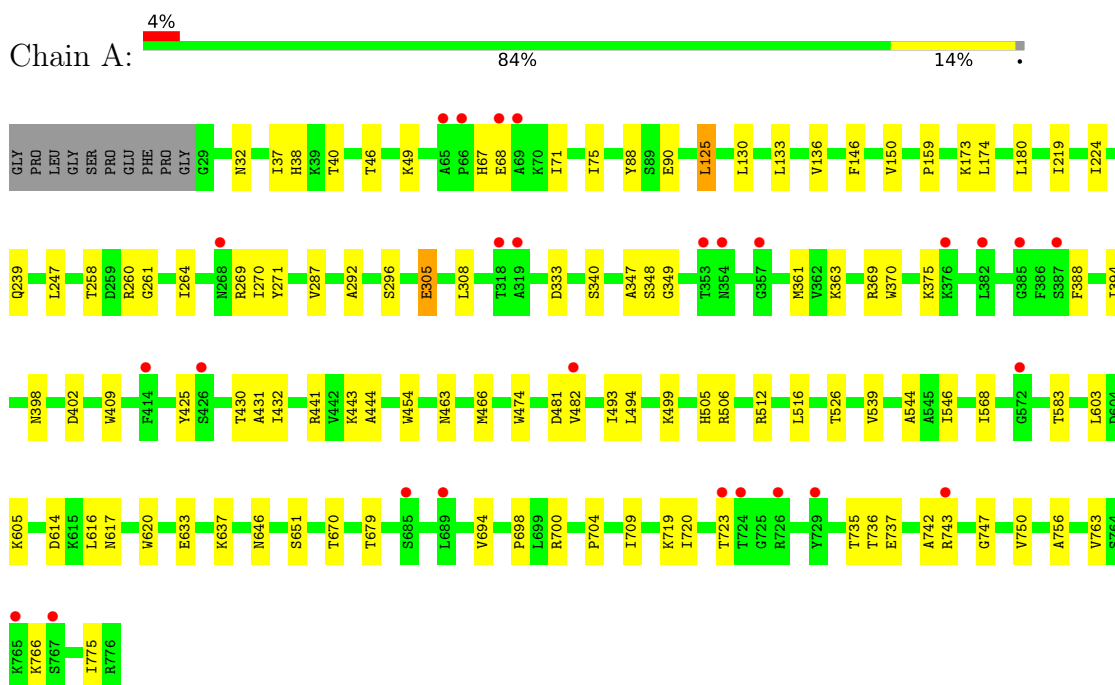
- Molecule 9 is water.

Mol	Chain	Residues	Atoms	ZeroOcc	AltConf
9	A	43	Total O 43 43	0	0

3 Residue-property plots [i](#)

These plots are drawn for all protein, RNA, DNA and oligosaccharide chains in the entry. The first graphic for a chain summarises the proportions of the various outlier classes displayed in the second graphic. The second graphic shows the sequence view annotated by issues in geometry and electron density. Residues are color-coded according to the number of geometric quality criteria for which they contain at least one outlier: green = 0, yellow = 1, orange = 2 and red = 3 or more. A red dot above a residue indicates a poor fit to the electron density ($RSRZ > 2$). Stretches of 2 or more consecutive residues without any outlier are shown as a green connector. Residues present in the sample, but not in the model, are shown in grey.

- Molecule 1: Immunoreactive 84kD antigen PG93



4 Data and refinement statistics

Property	Value	Source
Space group	P 43 21 2	Depositor
Cell constants a, b, c, α , β , γ	115.52Å 115.52Å 139.88Å 90.00° 90.00° 90.00°	Depositor
Resolution (Å)	48.46 – 2.90 48.46 – 2.90	Depositor EDS
% Data completeness (in resolution range)	99.9 (48.46-2.90) 99.9 (48.46-2.90)	Depositor EDS
R_{merge}	0.11	Depositor
R_{sym}	(Not available)	Depositor
$\langle I/\sigma(I) \rangle$ ¹	2.86 (at 2.91Å)	Xtriage
Refinement program	BUSTER 2.10.2	Depositor
R, R_{free}	0.183 , 0.238 0.192 , 0.244	Depositor DCC
R_{free} test set	723 reflections (3.35%)	wwPDB-VP
Wilson B-factor (Å ²)	68.1	Xtriage
Anisotropy	0.060	Xtriage
Bulk solvent k_{sol} (e/Å ³), B_{sol} (Å ²)	(Not available) , (Not available)	EDS
L-test for twinning ²	$\langle L \rangle = 0.48$, $\langle L^2 \rangle = 0.31$	Xtriage
Estimated twinning fraction	No twinning to report.	Xtriage
F_o, F_c correlation	0.94	EDS
Total number of atoms	5783	wwPDB-VP
Average B, all atoms (Å ²)	74.0	wwPDB-VP

Xtriage's analysis on translational NCS is as follows: *The largest off-origin peak in the Patterson function is 4.52% of the height of the origin peak. No significant pseudotranslation is detected.*

¹Intensities estimated from amplitudes.

²Theoretical values of $\langle |L| \rangle$, $\langle L^2 \rangle$ for acentric reflections are 0.5, 0.333 respectively for untwinned datasets, and 0.375, 0.2 for perfectly twinned datasets.

5 Model quality [i](#)

5.1 Standard geometry [i](#)

Bond lengths and bond angles in the following residue types are not validated in this section: CL, ZN, PG4, PEG, GOL, CA, CAC

The Z score for a bond length (or angle) is the number of standard deviations the observed value is removed from the expected value. A bond length (or angle) with $|Z| > 5$ is considered an outlier worth inspection. RMSZ is the root-mean-square of all Z scores of the bond lengths (or angles).

Mol	Chain	Bond lengths		Bond angles	
		RMSZ	# Z >5	RMSZ	# Z >5
1	A	0.51	0/5793	0.74	0/7871

There are no bond length outliers.

There are no bond angle outliers.

There are no chirality outliers.

There are no planarity outliers.

5.2 Too-close contacts [i](#)

In the following table, the Non-H and H(model) columns list the number of non-hydrogen atoms and hydrogen atoms in the chain respectively. The H(added) column lists the number of hydrogen atoms added and optimized by MolProbity. The Clashes column lists the number of clashes within the asymmetric unit, whereas Symm-Clashes lists symmetry-related clashes.

Mol	Chain	Non-H	H(model)	H(added)	Clashes	Symm-Clashes
1	A	5678	0	5591	45	0
2	A	4	0	0	0	0
3	A	8	0	0	0	0
4	A	5	0	0	0	0
5	A	1	0	0	0	0
6	A	13	0	18	0	0
7	A	7	0	10	0	0
8	A	24	0	28	0	0
9	A	43	0	0	0	0
All	All	5783	0	5647	45	0

The all-atom clashscore is defined as the number of clashes found per 1000 atoms (including hydrogen atoms). The all-atom clashscore for this structure is 4.

All (45) close contacts within the same asymmetric unit are listed below, sorted by their clash magnitude.

Atom-1	Atom-2	Interatomic distance (Å)	Clash overlap (Å)
1:A:333:ASP:HB2	1:A:348:SER:HB2	1.65	0.78
1:A:270:ILE:HD11	1:A:287:VAL:HG21	1.80	0.64
1:A:493:ILE:HG12	1:A:499:LYS:HG2	1.86	0.57
1:A:735:THR:HG23	1:A:737:GLU:H	1.69	0.57
1:A:430:THR:HG22	1:A:432:ILE:H	1.71	0.55
1:A:348:SER:OG	1:A:361:MET:HB3	2.08	0.54
1:A:700:ARG:HG2	1:A:775:ILE:HD11	1.90	0.54
1:A:425:TYR:HB3	1:A:430:THR:HG21	1.90	0.53
1:A:258:THR:HG22	1:A:260:ARG:H	1.75	0.52
1:A:258:THR:HG21	1:A:292:ALA:HB3	1.91	0.52
1:A:375:LYS:HA	1:A:388:PHE:HD2	1.75	0.52
1:A:506:ARG:HG3	1:A:512:ARG:HB2	1.92	0.51
1:A:130:LEU:HD21	1:A:133:LEU:HB2	1.93	0.50
1:A:38:HIS:HE1	1:A:305:GLU:HG3	1.75	0.50
1:A:125:LEU:HG	1:A:146:PHE:HB2	1.94	0.49
1:A:264:ILE:HB	1:A:271:TYR:HB2	1.93	0.49
1:A:37:ILE:HD11	1:A:71:ILE:HD12	1.95	0.49
1:A:742:ALA:O	1:A:750:VAL:HB	2.12	0.49
1:A:620:TRP:CZ2	1:A:679:THR:HG23	2.47	0.49
1:A:443:LYS:HG2	1:A:444:ALA:H	1.78	0.49
1:A:409:TRP:CD2	1:A:441:ARG:HB2	2.48	0.48
1:A:150:VAL:O	1:A:159:PRO:HD2	2.15	0.47
1:A:698:PRO:HB2	1:A:775:ILE:HG12	1.96	0.47
1:A:482:VAL:HG21	1:A:516:LEU:HD22	1.96	0.46
1:A:88:TYR:CE2	1:A:90:GLU:HA	2.51	0.46
1:A:620:TRP:HZ2	1:A:679:THR:HG23	1.82	0.45
1:A:617:ASN:HB3	1:A:633:GLU:HG2	1.98	0.45
1:A:720:ILE:HA	1:A:756:ALA:O	2.17	0.44
1:A:546:ILE:HG22	1:A:568:ILE:HD11	1.99	0.44
1:A:694:VAL:HG13	1:A:709:ILE:HD13	2.00	0.43
1:A:46:THR:HB	1:A:49:LYS:O	2.18	0.43
1:A:431:ALA:HB2	1:A:474:TRP:HB3	2.01	0.43
1:A:258:THR:HG22	1:A:261:GLY:H	1.83	0.43
1:A:614:ASP:HB3	1:A:616:LEU:H	1.85	0.42
1:A:347:ALA:HB2	1:A:394:ILE:HD11	2.02	0.42
1:A:174:LEU:HD11	1:A:180:LEU:HD22	2.01	0.42
1:A:409:TRP:CE3	1:A:441:ARG:HB2	2.54	0.42
1:A:454:TRP:CE2	1:A:466:MET:HG3	2.54	0.42
1:A:136:VAL:HG11	1:A:173:LYS:HG2	2.02	0.42
1:A:363:LYS:HB3	1:A:370:TRP:CZ3	2.54	0.42

Continued on next page...

Continued from previous page...

Atom-1	Atom-2	Interatomic distance (Å)	Clash overlap (Å)
1:A:651:SER:HB3	1:A:670:THR:HB	2.02	0.41
1:A:40:THR:HG21	1:A:308:LEU:HG	2.01	0.41
1:A:443:LYS:HG2	1:A:444:ALA:N	2.36	0.40
1:A:539:VAL:HA	1:A:544:ALA:O	2.22	0.40
1:A:743:ARG:HD2	1:A:747:GLY:O	2.21	0.40

There are no symmetry-related clashes.

5.3 Torsion angles [i](#)

5.3.1 Protein backbone [i](#)

In the following table, the Percentiles column shows the percent Ramachandran outliers of the chain as a percentile score with respect to all X-ray entries followed by that with respect to entries of similar resolution.

The Analysed column shows the number of residues for which the backbone conformation was analysed, and the total number of residues.

Mol	Chain	Analysed	Favoured	Allowed	Outliers	Percentiles
1	A	746/758 (98%)	693 (93%)	51 (7%)	2 (0%)	41 71

All (2) Ramachandran outliers are listed below:

Mol	Chain	Res	Type
1	A	349	GLY
1	A	704	PRO

5.3.2 Protein sidechains [i](#)

In the following table, the Percentiles column shows the percent sidechain outliers of the chain as a percentile score with respect to all X-ray entries followed by that with respect to entries of similar resolution.

The Analysed column shows the number of residues for which the sidechain conformation was analysed, and the total number of residues.

Mol	Chain	Analysed	Rotameric	Outliers	Percentiles
1	A	601/608 (99%)	570 (95%)	31 (5%)	23 55

All (31) residues with a non-rotameric sidechain are listed below:

Mol	Chain	Res	Type
1	A	32	ASN
1	A	67	HIS
1	A	68	GLU
1	A	75	ILE
1	A	125	LEU
1	A	219	ILE
1	A	224	ILE
1	A	239	GLN
1	A	247	LEU
1	A	269	ARG
1	A	296	SER
1	A	305	GLU
1	A	340	SER
1	A	369	ARG
1	A	398	ASN
1	A	402	ASP
1	A	463	ASN
1	A	481	ASP
1	A	494	LEU
1	A	505	HIS
1	A	526	THR
1	A	583	THR
1	A	603	LEU
1	A	605	LYS
1	A	637	LYS
1	A	646	ASN
1	A	719	LYS
1	A	723	THR
1	A	736	THR
1	A	763	VAL
1	A	766	LYS

Sometimes sidechains can be flipped to improve hydrogen bonding and reduce clashes. All (1) such sidechains are listed below:

Mol	Chain	Res	Type
1	A	372	ASN

5.3.3 RNA [i](#)

There are no RNA molecules in this entry.

5.4 Non-standard residues in protein, DNA, RNA chains [i](#)

There are no non-standard protein/DNA/RNA residues in this entry.

5.5 Carbohydrates [i](#)

There are no monosaccharides in this entry.

5.6 Ligand geometry [i](#)

Of 20 ligands modelled in this entry, 13 are monoatomic - leaving 7 for Mogul analysis.

In the following table, the Counts columns list the number of bonds (or angles) for which Mogul statistics could be retrieved, the number of bonds (or angles) that are observed in the model and the number of bonds (or angles) that are defined in the Chemical Component Dictionary. The Link column lists molecule types, if any, to which the group is linked. The Z score for a bond length (or angle) is the number of standard deviations the observed value is removed from the expected value. A bond length (or angle) with $|Z| > 2$ is considered an outlier worth inspection. RMSZ is the root-mean-square of all Z scores of the bond lengths (or angles).

Mol	Type	Chain	Res	Link	Bond lengths			Bond angles		
					Counts	RMSZ	$\# Z > 2$	Counts	RMSZ	$\# Z > 2$
8	GOL	A	820	-	5,5,5	0.09	0	5,5,5	0.35	0
7	PEG	A	816	-	6,6,6	0.18	0	5,5,5	0.15	0
8	GOL	A	819	3	5,5,5	0.11	0	5,5,5	0.19	0
6	PG4	A	815	-	12,12,12	0.51	0	11,11,11	0.30	0
8	GOL	A	818	3	5,5,5	0.09	0	5,5,5	0.17	0
8	GOL	A	817	3	5,5,5	0.08	0	5,5,5	0.18	0
4	CAC	A	813	3	0,4,4	-	-	0,6,6	-	-

In the following table, the Chirals column lists the number of chiral outliers, the number of chiral centers analysed, the number of these observed in the model and the number defined in the Chemical Component Dictionary. Similar counts are reported in the Torsion and Rings columns. '-' means no outliers of that kind were identified.

Mol	Type	Chain	Res	Link	Chirals	Torsions	Rings
8	GOL	A	820	-	-	2/4/4/4	-
7	PEG	A	816	-	-	2/4/4/4	-
8	GOL	A	819	3	-	1/4/4/4	-
6	PG4	A	815	-	-	7/10/10/10	-
8	GOL	A	818	3	-	2/4/4/4	-
8	GOL	A	817	3	-	2/4/4/4	-

There are no bond length outliers.

There are no bond angle outliers.

There are no chirality outliers.

All (16) torsion outliers are listed below:

Mol	Chain	Res	Type	Atoms
8	A	817	GOL	C1-C2-C3-O3
6	A	815	PG4	O2-C3-C4-O3
6	A	815	PG4	O3-C5-C6-O4
8	A	817	GOL	O2-C2-C3-O3
6	A	815	PG4	O1-C1-C2-O2
6	A	815	PG4	C8-C7-O4-C6
7	A	816	PEG	C1-C2-O2-C3
8	A	820	GOL	O2-C2-C3-O3
6	A	815	PG4	C6-C5-O3-C4
6	A	815	PG4	C1-C2-O2-C3
7	A	816	PEG	C4-C3-O2-C2
8	A	818	GOL	C1-C2-C3-O3
8	A	818	GOL	O1-C1-C2-C3
8	A	820	GOL	C1-C2-C3-O3
6	A	815	PG4	O4-C7-C8-O5
8	A	819	GOL	O2-C2-C3-O3

There are no ring outliers.

No monomer is involved in short contacts.

5.7 Other polymers [i](#)

There are no such residues in this entry.

5.8 Polymer linkage issues [i](#)

There are no chain breaks in this entry.

6 Fit of model and data

6.1 Protein, DNA and RNA chains

In the following table, the column labelled ‘#RSRZ> 2’ contains the number (and percentage) of RSRZ outliers, followed by percent RSRZ outliers for the chain as percentile scores relative to all X-ray entries and entries of similar resolution. The OWAB column contains the minimum, median, 95th percentile and maximum values of the occupancy-weighted average B-factor per residue. The column labelled ‘Q< 0.9’ lists the number of (and percentage) of residues with an average occupancy less than 0.9.

Mol	Chain	Analysed	<RSRZ>	#RSRZ>2	OWAB(Å ²)	Q<0.9
1	A	748/758 (98%)	0.22	27 (3%) 42 37	33, 72, 116, 155	0

All (27) RSRZ outliers are listed below:

Mol	Chain	Res	Type	RSRZ
1	A	354	ASN	4.6
1	A	68	GLU	4.5
1	A	66	PRO	3.6
1	A	357	GLY	3.1
1	A	743	ARG	3.0
1	A	353	THR	3.0
1	A	724	THR	2.8
1	A	65	ALA	2.6
1	A	69	ALA	2.5
1	A	685	SER	2.5
1	A	385	GLY	2.5
1	A	376	LYS	2.5
1	A	319	ALA	2.4
1	A	726	ARG	2.3
1	A	723	THR	2.3
1	A	482	VAL	2.3
1	A	382	LEU	2.3
1	A	268	ASN	2.2
1	A	572	GLY	2.2
1	A	689	LEU	2.1
1	A	387	SER	2.1
1	A	318	THR	2.1
1	A	414	PHE	2.1
1	A	767	SER	2.1
1	A	426	SER	2.1
1	A	765	LYS	2.1
1	A	729	TYR	2.0

6.2 Non-standard residues in protein, DNA, RNA chains [i](#)

There are no non-standard protein/DNA/RNA residues in this entry.

6.3 Carbohydrates [i](#)

There are no monosaccharides in this entry.

6.4 Ligands [i](#)

In the following table, the Atoms column lists the number of modelled atoms in the group and the number defined in the chemical component dictionary. The B-factors column lists the minimum, median, 95th percentile and maximum values of B factors of atoms in the group. The column labelled 'Q< 0.9' lists the number of atoms with occupancy less than 0.9.

Mol	Type	Chain	Res	Atoms	RSCC	RSR	B-factors(Å ²)	Q<0.9
6	PG4	A	815	13/13	0.78	0.17	89,92,95,96	0
8	GOL	A	820	6/6	0.82	0.20	85,90,91,92	0
2	CA	A	811	1/1	0.88	0.25	98,98,98,98	0
2	CA	A	810	1/1	0.89	0.09	87,87,87,87	0
7	PEG	A	816	7/7	0.90	0.21	76,79,84,84	0
2	CA	A	812	1/1	0.92	0.11	105,105,105,105	0
2	CA	A	801	1/1	0.93	0.11	81,81,81,81	0
3	ZN	A	804	1/1	0.95	0.15	88,88,88,88	0
8	GOL	A	819	6/6	0.96	0.16	98,99,100,100	0
8	GOL	A	818	6/6	0.96	0.13	80,84,85,86	0
3	ZN	A	802	1/1	0.97	0.11	113,113,113,113	0
3	ZN	A	805	1/1	0.97	0.20	88,88,88,88	0
8	GOL	A	817	6/6	0.97	0.25	88,89,91,94	0
3	ZN	A	803	1/1	0.98	0.13	106,106,106,106	0
3	ZN	A	806	1/1	0.98	0.17	113,113,113,113	0
3	ZN	A	809	1/1	0.98	0.19	80,80,80,80	0
3	ZN	A	807	1/1	0.99	0.15	117,117,117,117	0
4	CAC	A	813	5/5	0.99	0.18	103,103,104,105	0
5	CL	A	814	1/1	0.99	0.19	53,53,53,53	0
3	ZN	A	808	1/1	1.00	0.11	49,49,49,49	0

6.5 Other polymers [i](#)

There are no such residues in this entry.