



Full wwPDB X-ray Structure Validation Report ⓘ

Jun 22, 2024 – 07:26 PM EDT

PDB ID : 5L7K
Title : The crystal structure of myristoylated NPHP3 peptide in complex with UNC119a
Authors : Fansa, E.K.; Jaiswal, M.; Wittinghofer, A.
Deposited on : 2016-06-03
Resolution : 2.10 Å(reported)

This is a Full wwPDB X-ray Structure Validation Report for a publicly released PDB entry.

We welcome your comments at validation@mail.wwpdb.org

A user guide is available at

<https://www.wwpdb.org/validation/2017/XrayValidationReportHelp>

with specific help available everywhere you see the ⓘ symbol.

The types of validation reports are described at

<http://www.wwpdb.org/validation/2017/FAQs#types>.

The following versions of software and data (see [references ⓘ](#)) were used in the production of this report:

MolProbity : 4.02b-467
Mogul : 1.8.5 (274361), CSD as541be (2020)
Xtriage (Phenix) : 1.13
EDS : 2.37.1
Percentile statistics : 20191225.v01 (using entries in the PDB archive December 25th 2019)
Refmac : 5.8.0158
CCP4 : 7.0.044 (Gargrove)
Ideal geometry (proteins) : Engh & Huber (2001)
Ideal geometry (DNA, RNA) : Parkinson et al. (1996)
Validation Pipeline (wwPDB-VP) : 2.37.1

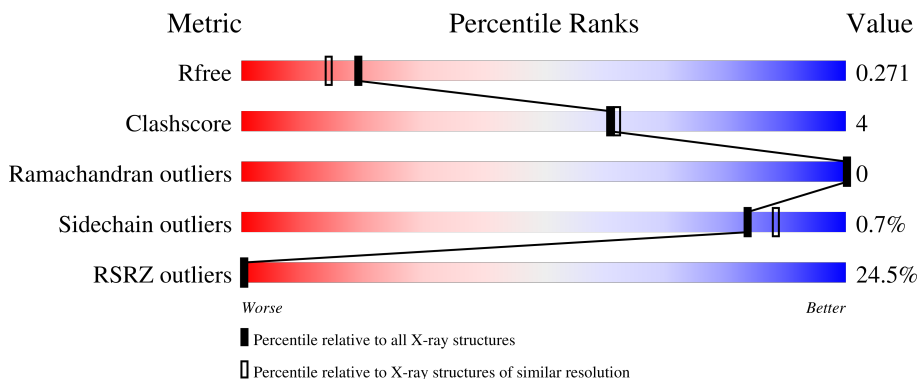
1 Overall quality at a glance

The following experimental techniques were used to determine the structure:

X-RAY DIFFRACTION

The reported resolution of this entry is 2.10 Å.

Percentile scores (ranging between 0-100) for global validation metrics of the entry are shown in the following graphic. The table shows the number of entries on which the scores are based.



Metric	Whole archive (#Entries)	Similar resolution (#Entries, resolution range(Å))
R_{free}	130704	5197 (2.10-2.10)
Clashscore	141614	5710 (2.10-2.10)
Ramachandran outliers	138981	5647 (2.10-2.10)
Sidechain outliers	138945	5648 (2.10-2.10)
RSRZ outliers	127900	5083 (2.10-2.10)

The table below summarises the geometric issues observed across the polymeric chains and their fit to the electron density. The red, orange, yellow and green segments of the lower bar indicate the fraction of residues that contain outliers for ≥ 3 , 2, 1 and 0 types of geometric quality criteria respectively. A grey segment represents the fraction of residues that are not modelled. The numeric value for each fraction is indicated below the corresponding segment, with a dot representing fractions $\leq 5\%$. The upper red bar (where present) indicates the fraction of residues that have poor fit to the electron density. The numeric value is given above the bar.

Mol	Chain	Length	Quality of chain
1	A	180	<p>6% (poor fit), 81% (0-1 outliers), 8% (2 outliers), 11% (3+ outliers or not modelled)</p>
1	G	180	<p>37% (poor fit), 76% (0-1 outliers), 12% (2 outliers), 11% (3+ outliers or not modelled)</p>
2	B	6	<p>50% (poor fit), 83% (0-1 outliers), 17% (2 outliers or not modelled)</p>

2 Entry composition [i](#)

There are 4 unique types of molecules in this entry. The entry contains 2781 atoms, of which 0 are hydrogens and 0 are deuteriums.

In the tables below, the ZeroOcc column contains the number of atoms modelled with zero occupancy, the AltConf column contains the number of residues with at least one atom in alternate conformation and the Trace column contains the number of residues modelled with at most 2 atoms.

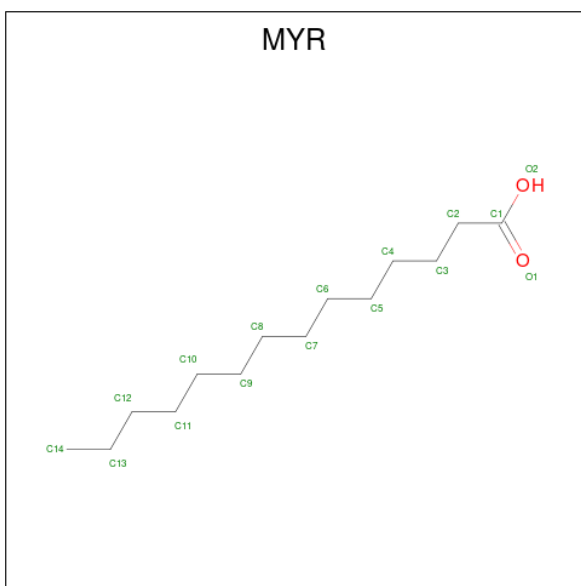
- Molecule 1 is a protein called Protein unc-119 homolog A.

Mol	Chain	Residues	Atoms					ZeroOcc	AltConf	Trace
			Total	C	N	O	S			
1	A	161	Total 1352	C 872	N 227	O 246	S 7	0	0	0
1	G	160	Total 1331	C 861	N 219	O 244	S 7	0	0	0

- Molecule 2 is a protein called GLY-THR-ALA-SER-SER-LEU.

Mol	Chain	Residues	Atoms				ZeroOcc	AltConf	Trace
			Total	C	N	O			
2	B	6	Total 36	C 21	N 6	O 9	0	0	0

- Molecule 3 is MYRISTIC ACID (three-letter code: MYR) (formula: C₁₄H₂₈O₂).



Mol	Chain	Residues	Atoms			ZeroOcc	AltConf
			Total	C	O		
3	B	1	Total 15	C 14	O 1	0	0

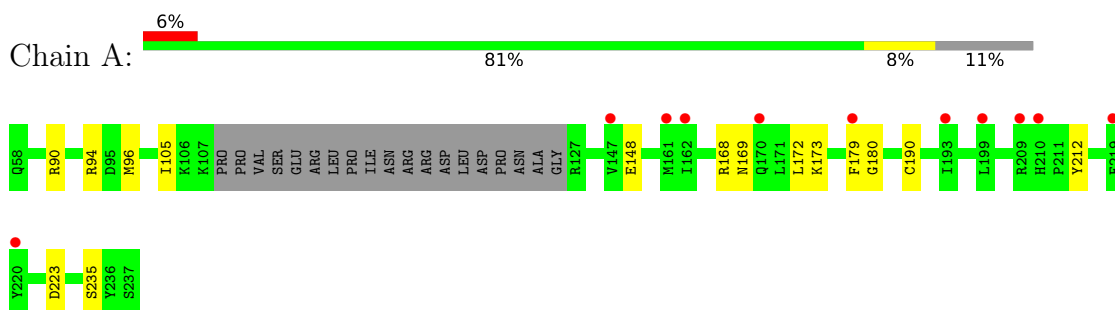
- Molecule 4 is water.

Mol	Chain	Residues	Atoms		ZeroOcc	AltConf
4	A	42	Total 42	O 42	0	0
4	B	2	Total 2	O 2	0	0
4	G	3	Total 3	O 3	0	0

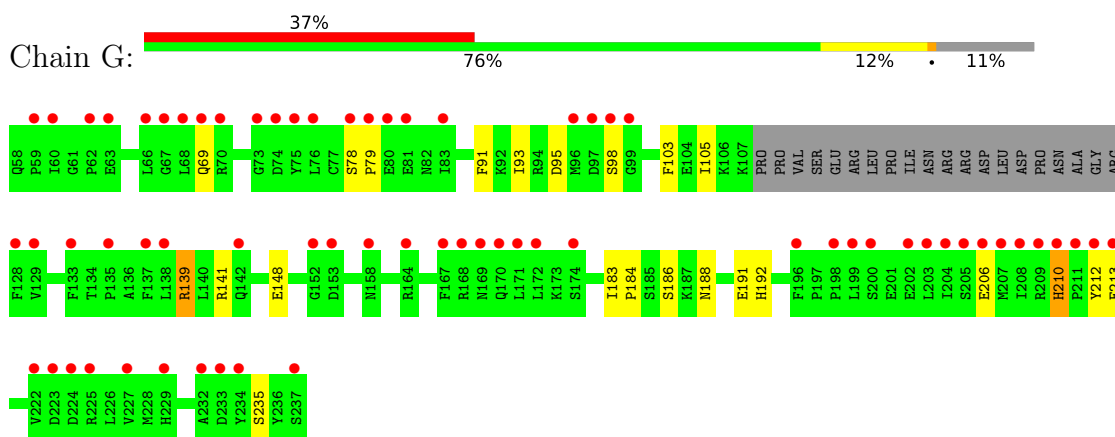
3 Residue-property plots [i](#)

These plots are drawn for all protein, RNA, DNA and oligosaccharide chains in the entry. The first graphic for a chain summarises the proportions of the various outlier classes displayed in the second graphic. The second graphic shows the sequence view annotated by issues in geometry and electron density. Residues are color-coded according to the number of geometric quality criteria for which they contain at least one outlier: green = 0, yellow = 1, orange = 2 and red = 3 or more. A red dot above a residue indicates a poor fit to the electron density ($RSRZ > 2$). Stretches of 2 or more consecutive residues without any outlier are shown as a green connector. Residues present in the sample, but not in the model, are shown in grey.

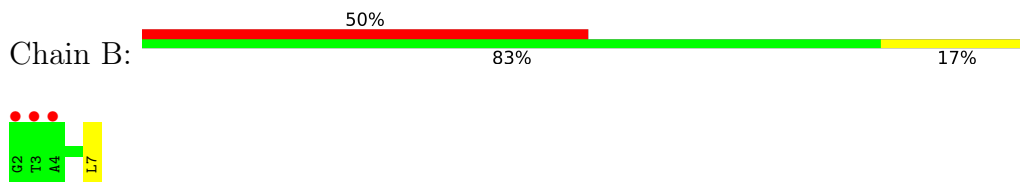
- Molecule 1: Protein unc-119 homolog A



- Molecule 1: Protein unc-119 homolog A



- Molecule 2: GLY-THR-ALA-SER-SER-LEU



4 Data and refinement statistics i

Property	Value	Source
Space group	I 41	Depositor
Cell constants a, b, c, α , β , γ	88.27Å 88.27Å 105.94Å 90.00° 90.00° 90.00°	Depositor
Resolution (Å)	28.35 – 2.10 27.91 – 2.10	Depositor EDS
% Data completeness (in resolution range)	100.0 (28.35-2.10) 100.0 (27.91-2.10)	Depositor EDS
R_{merge}	0.12	Depositor
R_{sym}	(Not available)	Depositor
$\langle I/\sigma(I) \rangle$ ¹	2.72 (at 2.10Å)	Xtrriage
Refinement program	REFMAC 5.7.0032	Depositor
R, R_{free}	0.216 , 0.278 0.220 , 0.271	Depositor DCC
R_{free} test set	1183 reflections (5.00%)	wwPDB-VP
Wilson B-factor (Å ²)	41.3	Xtrriage
Anisotropy	0.019	Xtrriage
Bulk solvent k_{sol} (e/Å ³), B_{sol} (Å ²)	0.38 , 59.3	EDS
L-test for twinning ²	$\langle L \rangle = 0.46$, $\langle L^2 \rangle = 0.28$	Xtrriage
Estimated twinning fraction	0.054 for -h,k,-l	Xtrriage
F_o, F_c correlation	0.95	EDS
Total number of atoms	2781	wwPDB-VP
Average B, all atoms (Å ²)	64.0	wwPDB-VP

Xtrriage's analysis on translational NCS is as follows: *The largest off-origin peak in the Patterson function is 6.04% of the height of the origin peak. No significant pseudotranslation is detected.*

¹Intensities estimated from amplitudes.

²Theoretical values of $\langle |L| \rangle$, $\langle L^2 \rangle$ for acentric reflections are 0.5, 0.333 respectively for untwinned datasets, and 0.375, 0.2 for perfectly twinned datasets.

5 Model quality [i](#)

5.1 Standard geometry [i](#)

Bond lengths and bond angles in the following residue types are not validated in this section: MYR

The Z score for a bond length (or angle) is the number of standard deviations the observed value is removed from the expected value. A bond length (or angle) with $|Z| > 5$ is considered an outlier worth inspection. RMSZ is the root-mean-square of all Z scores of the bond lengths (or angles).

Mol	Chain	Bond lengths		Bond angles	
		RMSZ	# $ Z > 5$	RMSZ	# $ Z > 5$
1	A	0.72	0/1389	0.82	0/1873
1	G	0.54	1/1368 (0.1%)	0.66	0/1847
2	B	0.61	0/35	0.88	0/46
All	All	0.64	1/2792 (0.0%)	0.75	0/3766

Chiral center outliers are detected by calculating the chiral volume of a chiral center and verifying if the center is modelled as a planar moiety or with the opposite hand. A planarity outlier is detected by checking planarity of atoms in a peptide group, atoms in a mainchain group or atoms of a sidechain that are expected to be planar.

Mol	Chain	#Chirality outliers	#Planarity outliers
1	G	0	1

All (1) bond length outliers are listed below:

Mol	Chain	Res	Type	Atoms	Z	Observed(Å)	Ideal(Å)
1	G	139	ARG	C-N	-11.54	1.07	1.34

There are no bond angle outliers.

There are no chirality outliers.

All (1) planarity outliers are listed below:

Mol	Chain	Res	Type	Group
1	G	139	ARG	Mainchain

5.2 Too-close contacts [i](#)

In the following table, the Non-H and H(model) columns list the number of non-hydrogen atoms and hydrogen atoms in the chain respectively. The H(added) column lists the number of hydrogen

atoms added and optimized by MolProbity. The Clashes column lists the number of clashes within the asymmetric unit, whereas Symm-Clashes lists symmetry-related clashes.

Mol	Chain	Non-H	H(model)	H(added)	Clashes	Symm-Clashes
1	A	1352	0	1302	9	0
1	G	1331	0	1271	17	1
2	B	36	0	35	1	0
3	B	15	0	27	0	0
4	A	42	0	0	0	0
4	B	2	0	0	0	0
4	G	3	0	0	0	0
All	All	2781	0	2635	24	1

The all-atom clashscore is defined as the number of clashes found per 1000 atoms (including hydrogen atoms). The all-atom clashscore for this structure is 4.

All (24) close contacts within the same asymmetric unit are listed below, sorted by their clash magnitude.

Atom-1	Atom-2	Interatomic distance (Å)	Clash overlap (Å)
1:G:206:GLU:O	1:G:210:HIS:HB2	1.82	0.80
1:A:180:GLY:HA2	1:G:183:ILE:HD13	1.71	0.72
1:G:183:ILE:HD12	1:G:184:PRO:HD2	1.73	0.69
1:G:183:ILE:HG23	1:G:186:SER:HB3	1.76	0.65
1:A:212:TYR:CE1	1:A:235:SER:HB2	2.37	0.60
1:G:206:GLU:O	1:G:210:HIS:CB	2.49	0.60
1:A:180:GLY:CA	1:G:183:ILE:HD13	2.35	0.56
1:A:172:LEU:O	1:A:173:LYS:HB2	2.07	0.55
1:G:95:ASP:OD2	1:G:98:SER:CB	2.57	0.53
1:G:210:HIS:O	1:G:213:GLU:HG2	2.09	0.52
1:A:90:ARG:HB3	1:A:148:GLU:HB2	1.92	0.51
1:A:94:ARG:HG3	1:A:96:MET:CE	2.42	0.50
1:G:95:ASP:OD2	1:G:98:SER:HB2	2.14	0.47
1:G:191:GLU:O	1:G:192:HIS:ND1	2.49	0.45
1:G:210:HIS:O	1:G:213:GLU:CG	2.65	0.45
1:A:105:ILE:HG23	2:B:7:LEU:HD22	2.00	0.44
1:A:168:ARG:O	1:A:169:ASN:HB2	2.18	0.43
1:G:91:PHE:HB3	1:G:105:ILE:HG22	2.00	0.43
1:G:78:SER:HB2	1:G:79:PRO:HD2	2.01	0.42
1:G:93:ILE:HG12	1:G:103:PHE:HB3	2.02	0.41
1:A:179:PHE:HD1	1:A:190:CYS:SG	2.43	0.41
1:G:183:ILE:CD1	1:G:184:PRO:HD2	2.46	0.41
1:G:212:TYR:CE1	1:G:235:SER:HB2	2.56	0.40
1:G:148:GLU:HA	1:G:188:ASN:O	2.21	0.40

All (1) symmetry-related close contacts are listed below. The label for Atom-2 includes the symmetry operator and encoded unit-cell translations to be applied.

Atom-1	Atom-2	Interatomic distance (Å)	Clash overlap (Å)
1:G:69:GLN:OE1	1:G:141:ARG:NH2[8_545]	2.03	0.17

5.3 Torsion angles [i](#)

5.3.1 Protein backbone [i](#)

In the following table, the Percentiles column shows the percent Ramachandran outliers of the chain as a percentile score with respect to all X-ray entries followed by that with respect to entries of similar resolution.

The Analysed column shows the number of residues for which the backbone conformation was analysed, and the total number of residues.

Mol	Chain	Analysed	Favoured	Allowed	Outliers	Percentiles	
1	A	157/180 (87%)	151 (96%)	6 (4%)	0	100	100
1	G	156/180 (87%)	148 (95%)	8 (5%)	0	100	100
2	B	4/6 (67%)	4 (100%)	0	0	100	100
All	All	317/366 (87%)	303 (96%)	14 (4%)	0	100	100

There are no Ramachandran outliers to report.

5.3.2 Protein sidechains [i](#)

In the following table, the Percentiles column shows the percent sidechain outliers of the chain as a percentile score with respect to all X-ray entries followed by that with respect to entries of similar resolution.

The Analysed column shows the number of residues for which the sidechain conformation was analysed, and the total number of residues.

Mol	Chain	Analysed	Rotameric	Outliers	Percentiles	
1	A	151/168 (90%)	150 (99%)	1 (1%)	84	88
1	G	148/168 (88%)	147 (99%)	1 (1%)	84	88
2	B	4/4 (100%)	4 (100%)	0	100	100
All	All	303/340 (89%)	301 (99%)	2 (1%)	84	88

All (2) residues with a non-rotameric sidechain are listed below:

Mol	Chain	Res	Type
1	A	223	ASP
1	G	210	HIS

Sometimes sidechains can be flipped to improve hydrogen bonding and reduce clashes. There are no such sidechains identified.

5.3.3 RNA [i](#)

There are no RNA molecules in this entry.

5.4 Non-standard residues in protein, DNA, RNA chains [i](#)

There are no non-standard protein/DNA/RNA residues in this entry.

5.5 Carbohydrates [i](#)

There are no monosaccharides in this entry.

5.6 Ligand geometry [i](#)

1 ligand is modelled in this entry.

In the following table, the Counts columns list the number of bonds (or angles) for which Mogul statistics could be retrieved, the number of bonds (or angles) that are observed in the model and the number of bonds (or angles) that are defined in the Chemical Component Dictionary. The Link column lists molecule types, if any, to which the group is linked. The Z score for a bond length (or angle) is the number of standard deviations the observed value is removed from the expected value. A bond length (or angle) with $|Z| > 2$ is considered an outlier worth inspection. RMSZ is the root-mean-square of all Z scores of the bond lengths (or angles).

Mol	Type	Chain	Res	Link	Bond lengths			Bond angles		
					Counts	RMSZ	$\# Z > 2$	Counts	RMSZ	$\# Z > 2$
3	MYR	B	101	2	14,14,15	0.39	0	13,13,15	1.27	1 (7%)

In the following table, the Chirals column lists the number of chiral outliers, the number of chiral centers analysed, the number of these observed in the model and the number defined in the Chemical Component Dictionary. Similar counts are reported in the Torsion and Rings columns. '-' means no outliers of that kind were identified.

Mol	Type	Chain	Res	Link	Chirals	Torsions	Rings
3	MYR	B	101	2	-	7/11/12/13	-

There are no bond length outliers.

All (1) bond angle outliers are listed below:

Mol	Chain	Res	Type	Atoms	Z	Observed($^{\circ}$)	Ideal($^{\circ}$)
3	B	101	MYR	C3-C2-C1	-3.53	98.56	114.26

There are no chirality outliers.

All (7) torsion outliers are listed below:

Mol	Chain	Res	Type	Atoms
3	B	101	MYR	C9-C10-C11-C12
3	B	101	MYR	C11-C10-C9-C8
3	B	101	MYR	C7-C8-C9-C10
3	B	101	MYR	C6-C7-C8-C9
3	B	101	MYR	C5-C6-C7-C8
3	B	101	MYR	C11-C12-C13-C14
3	B	101	MYR	C10-C11-C12-C13

There are no ring outliers.

No monomer is involved in short contacts.

5.7 Other polymers [i](#)

There are no such residues in this entry.

5.8 Polymer linkage issues [i](#)

The following chains have linkage breaks:

Mol	Chain	Number of breaks
1	G	1

All chain breaks are listed below:

Model	Chain	Residue-1	Atom-1	Residue-2	Atom-2	Distance (\AA)
1	G	139:ARG	C	140:LEU	N	1.07

6 Fit of model and data

6.1 Protein, DNA and RNA chains

In the following table, the column labelled ‘#RSRZ > 2’ contains the number (and percentage) of RSRZ outliers, followed by percent RSRZ outliers for the chain as percentile scores relative to all X-ray entries and entries of similar resolution. The OWAB column contains the minimum, median, 95th percentile and maximum values of the occupancy-weighted average B-factor per residue. The column labelled ‘Q < 0.9’ lists the number of (and percentage) of residues with an average occupancy less than 0.9.

Mol	Chain	Analysed	<RSRZ>	#RSRZ>2	OWAB(Å ²)	Q<0.9
1	A	161/180 (89%)	0.61	11 (6%) 17 21	28, 40, 61, 77	0
1	G	160/180 (88%)	2.22	66 (41%) 0 0	49, 83, 124, 144	0
2	B	6/6 (100%)	1.95	3 (50%) 0 0	28, 29, 39, 47	0
All	All	327/366 (89%)	1.42	80 (24%) 0 0	28, 57, 116, 144	0

All (80) RSRZ outliers are listed below:

Mol	Chain	Res	Type	RSRZ
1	G	233	ASP	10.3
1	G	75	TYR	8.2
1	G	128	PHE	7.7
1	G	211	PRO	7.7
1	G	210	HIS	7.1
1	G	167	PHE	6.7
1	G	199	LEU	6.5
1	G	207	MET	6.0
1	G	74	ASP	5.9
1	G	198	PRO	5.8
1	G	196	PHE	5.8
1	G	80	GLU	5.5
1	G	137	PHE	5.5
1	G	79	PRO	5.5
1	G	212	TYR	5.2
1	G	170	GLN	5.0
1	G	73	GLY	4.9
1	G	172	LEU	4.7
1	G	209	ARG	4.6
1	G	206	GLU	4.6
1	G	68	LEU	4.6
1	G	168	ARG	4.6
1	G	70	ARG	4.5

Continued on next page...

Continued from previous page...

Mol	Chain	Res	Type	RSRZ
1	G	213	GLU	4.5
1	G	153	ASP	4.3
1	G	208	ILE	4.2
1	G	69	GLN	4.2
1	G	83	ILE	4.1
1	G	67	GLY	4.0
1	G	205	SER	4.0
1	G	78	SER	3.9
1	G	237	SER	3.8
1	G	63	GLU	3.8
1	G	98	SER	3.7
1	G	174	SER	3.7
1	G	171	LEU	3.6
1	G	97	ASP	3.6
1	G	225	ARG	3.4
1	G	227	VAL	3.4
1	G	223	ASP	3.3
1	G	200	SER	3.2
1	G	59	PRO	3.2
1	G	99	GLY	3.2
1	G	152	GLY	3.2
1	G	202	GLU	3.1
1	G	133	PHE	3.0
1	G	60	ILE	3.0
1	G	76	LEU	3.0
1	G	222	VAL	2.9
1	A	199	LEU	2.8
1	A	193	ILE	2.7
1	G	224	ASP	2.7
1	G	204	ILE	2.7
1	G	203	LEU	2.7
1	G	232	ALA	2.6
1	G	234	TYR	2.6
1	G	96	MET	2.6
2	B	3	THR	2.5
2	B	2	GLY	2.5
2	B	4	ALA	2.5
1	G	138	LEU	2.5
1	A	209	ARG	2.5
1	A	179	PHE	2.4
1	A	147	VAL	2.4
1	A	210	HIS	2.3

Continued on next page...

Continued from previous page...

Mol	Chain	Res	Type	RSRZ
1	G	81	GLU	2.3
1	A	170	GLN	2.3
1	G	129	VAL	2.3
1	G	169	ASN	2.3
1	G	66	LEU	2.2
1	G	135	PRO	2.2
1	G	142	GLN	2.2
1	A	220	TYR	2.1
1	G	164	ARG	2.1
1	A	219	PHE	2.1
1	G	62	PRO	2.1
1	G	158	ASN	2.1
1	A	162	ILE	2.0
1	G	229	HIS	2.0
1	A	161	MET	2.0

6.2 Non-standard residues in protein, DNA, RNA chains [i](#)

There are no non-standard protein/DNA/RNA residues in this entry.

6.3 Carbohydrates [i](#)

There are no monosaccharides in this entry.

6.4 Ligands [i](#)

In the following table, the Atoms column lists the number of modelled atoms in the group and the number defined in the chemical component dictionary. The B-factors column lists the minimum, median, 95th percentile and maximum values of B factors of atoms in the group. The column labelled 'Q<0.9' lists the number of atoms with occupancy less than 0.9.

Mol	Type	Chain	Res	Atoms	RSCC	RSR	B-factors(Å ²)	Q<0.9
3	MYR	B	101	15/16	0.95	0.26	30,44,61,64	0

6.5 Other polymers [i](#)

There are no such residues in this entry.