



Full wwPDB X-ray Structure Validation Report ⓘ

Jun 16, 2024 – 09:13 PM EDT

PDB ID : 5JA3
Title : Mycobacterium tuberculosis Dihydrofolate Reductase complexed with beta-NADPH and 3'-(3-(2,4-diamino-6-ethylpyrimidin-5-yl)prop-2-yn-1-yl)-4'-methoxy-[1,1'-b iphenyl]-4-carboxylic acid (UCP1106)
Authors : Hajian, B.; Anderson, A.C.
Deposited on : 2016-04-11
Resolution : 1.81 Å(reported)

This is a Full wwPDB X-ray Structure Validation Report for a publicly released PDB entry.

We welcome your comments at validation@mail.wwpdb.org

A user guide is available at

<https://www.wwpdb.org/validation/2017/XrayValidationReportHelp>

with specific help available everywhere you see the ⓘ symbol.

The types of validation reports are described at

<http://www.wwpdb.org/validation/2017/FAQs#types>.

The following versions of software and data (see [references ⓘ](#)) were used in the production of this report:

MolProbity : 4.02b-467
Mogul : 1.8.5 (274361), CSD as541be (2020)
Xtrriage (Phenix) : 1.13
EDS : 2.37.1
buster-report : 1.1.7 (2018)
Percentile statistics : 20191225.v01 (using entries in the PDB archive December 25th 2019)
Refmac : 5.8.0158
CCP4 : 7.0.044 (Gargrove)
Ideal geometry (proteins) : Engh & Huber (2001)
Ideal geometry (DNA, RNA) : Parkinson et al. (1996)
Validation Pipeline (wwPDB-VP) : 2.37.1

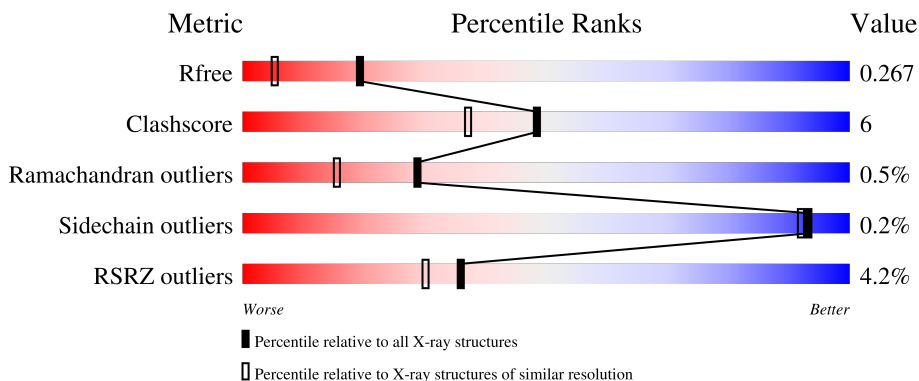
1 Overall quality at a glance

The following experimental techniques were used to determine the structure:

X-RAY DIFFRACTION

The reported resolution of this entry is 1.81 Å.

Percentile scores (ranging between 0-100) for global validation metrics of the entry are shown in the following graphic. The table shows the number of entries on which the scores are based.



Metric	Whole archive (#Entries)	Similar resolution (#Entries, resolution range(Å))
R_{free}	130704	7484 (1.84-1.80)
Clashscore	141614	8401 (1.84-1.80)
Ramachandran outliers	138981	8290 (1.84-1.80)
Sidechain outliers	138945	8290 (1.84-1.80)
RSRZ outliers	127900	7371 (1.84-1.80)

The table below summarises the geometric issues observed across the polymeric chains and their fit to the electron density. The red, orange, yellow and green segments of the lower bar indicate the fraction of residues that contain outliers for ≥ 3 , 2, 1 and 0 types of geometric quality criteria respectively. A grey segment represents the fraction of residues that are not modelled. The numeric value for each fraction is indicated below the corresponding segment, with a dot representing fractions $\leq 5\%$. The upper red bar (where present) indicates the fraction of residues that have poor fit to the electron density. The numeric value is given above the bar.

Mol	Chain	Length	Quality of chain
1	A	159	
1	B	159	
1	C	159	
1	D	159	

2 Entry composition [i](#)

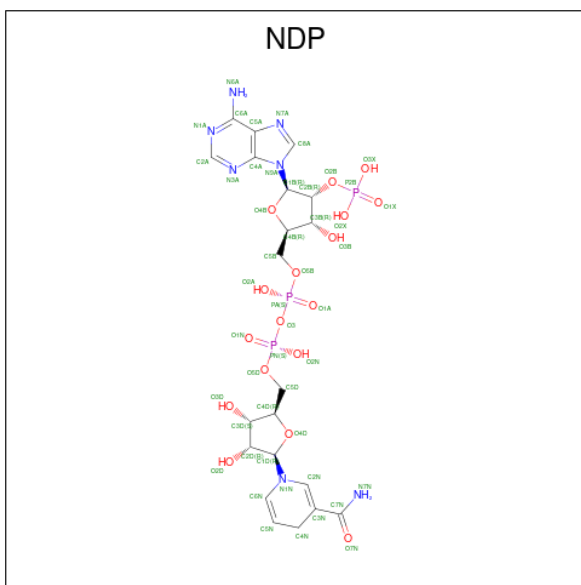
There are 4 unique types of molecules in this entry. The entry contains 5331 atoms, of which 0 are hydrogens and 0 are deuteriums.

In the tables below, the ZeroOcc column contains the number of atoms modelled with zero occupancy, the AltConf column contains the number of residues with at least one atom in alternate conformation and the Trace column contains the number of residues modelled with at most 2 atoms.

- Molecule 1 is a protein called Dihydrofolate reductase.

Mol	Chain	Residues	Atoms					ZeroOcc	AltConf	Trace
			Total	C	N	O	S			
1	A	159	Total 1244	C 783	N 228	O 228	S 5	0	0	0
1	B	159	Total 1248	C 787	N 228	O 228	S 5	0	1	0
1	C	159	Total 1244	C 783	N 228	O 228	S 5	0	0	0
1	D	159	Total 1244	C 783	N 228	O 228	S 5	0	0	0

- Molecule 2 is NADPH DIHYDRO-NICOTINAMIDE-ADENINE-DINUCLEOTIDE PHOSPHATE (three-letter code: NDP) (formula: C₂₁H₃₀N₇O₁₇P₃).



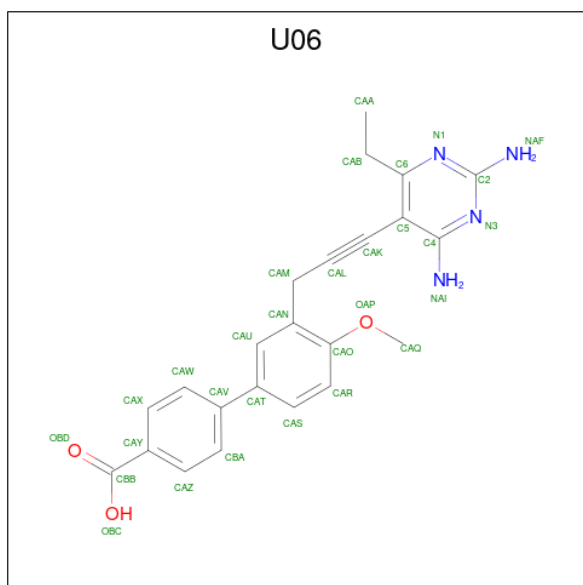
Mol	Chain	Residues	Atoms				ZeroOcc	AltConf	
			Total	C	N	O			P
2	A	1	Total 48	C 21	N 7	O 17	P 3	0	0
2	B	1	Total 48	C 21	N 7	O 17	P 3	0	0

Continued on next page...

Continued from previous page...

Mol	Chain	Residues	Atoms				ZeroOcc	AltConf	
2	C	1	Total	C	N	O	P	0	0
			48	21	7	17	3		
2	D	1	Total	C	N	O	P	0	0
			48	21	7	17	3		

- Molecule 3 is 4-[3-[3-[2,4-bis(azanyl)-6-ethyl-pyrimidin-5-yl]prop-2-ynyl]-4-methoxy-phenyl]benzoic acid (three-letter code: U06) (formula: C₂₃H₂₂N₄O₃).



Mol	Chain	Residues	Atoms				ZeroOcc	AltConf
3	A	1	Total	C	N	O	0	0
			30	23	4	3		
3	B	1	Total	C	N	O	0	0
			30	23	4	3		
3	C	1	Total	C	N	O	0	0
			30	23	4	3		
3	D	1	Total	C	N	O	0	0
			30	23	4	3		

- Molecule 4 is water.

Mol	Chain	Residues	Atoms		ZeroOcc	AltConf
4	A	10	Total	O	0	0
			10	10		
4	B	11	Total	O	0	0
			11	11		
4	C	9	Total	O	0	0
			9	9		

Continued on next page...

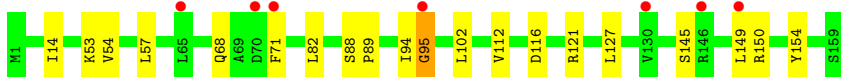
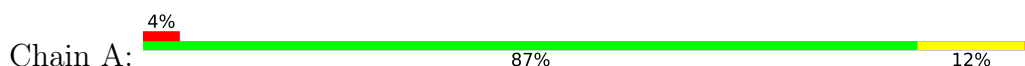
Continued from previous page...

Mol	Chain	Residues	Atoms	ZeroOcc	AltConf
4	D	9	Total O 9 9	0	0

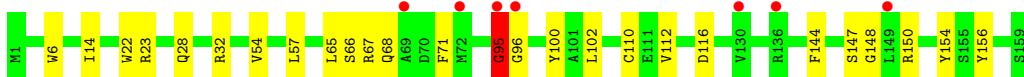
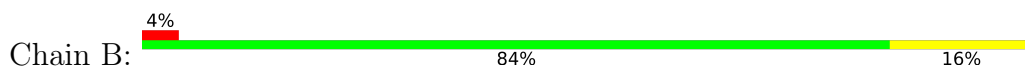
3 Residue-property plots [i](#)

These plots are drawn for all protein, RNA, DNA and oligosaccharide chains in the entry. The first graphic for a chain summarises the proportions of the various outlier classes displayed in the second graphic. The second graphic shows the sequence view annotated by issues in geometry and electron density. Residues are color-coded according to the number of geometric quality criteria for which they contain at least one outlier: green = 0, yellow = 1, orange = 2 and red = 3 or more. A red dot above a residue indicates a poor fit to the electron density ($RSRZ > 2$). Stretches of 2 or more consecutive residues without any outlier are shown as a green connector. Residues present in the sample, but not in the model, are shown in grey.

- Molecule 1: Dihydrofolate reductase



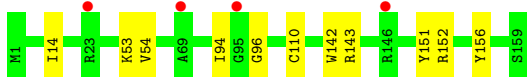
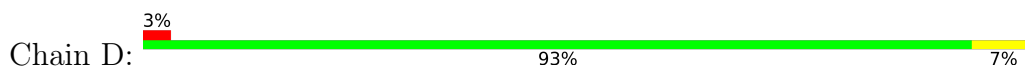
- Molecule 1: Dihydrofolate reductase



- Molecule 1: Dihydrofolate reductase



- Molecule 1: Dihydrofolate reductase



4 Data and refinement statistics i

Property	Value	Source
Space group	P 1	Depositor
Cell constants a, b, c, α , β , γ	59.61Å 60.44Å 60.47Å 90.07° 90.06° 89.93°	Depositor
Resolution (Å)	34.73 – 1.81 34.72 – 1.81	Depositor EDS
% Data completeness (in resolution range)	72.9 (34.73-1.81) 72.6 (34.72-1.81)	Depositor EDS
R_{merge}	(Not available)	Depositor
R_{sym}	0.03	Depositor
$\langle I/\sigma(I) \rangle$ ¹	4.32 (at 1.82Å)	Xtriage
Refinement program	PHENIX 1.9_1692	Depositor
R, R_{free}	0.225 , 0.267 0.227 , 0.267	Depositor DCC
R_{free} test set	1962 reflections (3.52%)	wwPDB-VP
Wilson B-factor (Å ²)	28.8	Xtriage
Anisotropy	0.226	Xtriage
Bulk solvent k_{sol} (e/Å ³), B_{sol} (Å ²)	0.36 , 28.4	EDS
L-test for twinning ²	$\langle L \rangle = 0.48$, $\langle L^2 \rangle = 0.31$	Xtriage

Continued on next page...

¹Intensities estimated from amplitudes.

²Theoretical values of $\langle |L| \rangle$, $\langle L^2 \rangle$ for acentric reflections are 0.5, 0.333 respectively for untwinned datasets, and 0.375, 0.2 for perfectly twinned datasets.

Continued from previous page...

Property	Value	Source
Estimated twinning fraction	0.439 for h,-l,k	Xtriage
	0.439 for h,l,-k	
	0.028 for l,k,-h	
	0.028 for -l,k,h	
	0.031 for k,-h,l	
	0.031 for -k,h,l	
	0.018 for k,-l,-h	
	0.018 for -l,h,-k	
	0.032 for -l,-h,k	
	0.032 for -k,l,-h	
	0.033 for l,-h,-k	
	0.033 for -k,-l,h	
	0.026 for k,l,h	
	0.026 for l,h,k	
	0.458 for h,-k,-l	
	0.056 for -h,k,-l	
	0.058 for -h,-k,l	
0.045 for k,h,-l		
0.038 for -k,-h,-l		
0.036 for -l,-k,-h		
0.025 for l,-k,h		
0.048 for -h,-l,-k		
0.052 for -h,l,k		
F_o, F_c correlation	0.95	EDS
Total number of atoms	5331	wwPDB-VP
Average B, all atoms (\AA^2)	33.0	wwPDB-VP

Xtriage's analysis on translational NCS is as follows: *The largest off-origin peak in the Patterson function is 7.46% of the height of the origin peak. No significant pseudotranslation is detected.*

5 Model quality [i](#)

5.1 Standard geometry [i](#)

Bond lengths and bond angles in the following residue types are not validated in this section: U06, NDP

The Z score for a bond length (or angle) is the number of standard deviations the observed value is removed from the expected value. A bond length (or angle) with $|Z| > 5$ is considered an outlier worth inspection. RMSZ is the root-mean-square of all Z scores of the bond lengths (or angles).

Mol	Chain	Bond lengths		Bond angles	
		RMSZ	# Z >5	RMSZ	# Z >5
1	A	0.40	0/1275	0.58	2/1732 (0.1%)
1	B	0.39	0/1282	0.59	1/1742 (0.1%)
1	C	0.39	0/1275	0.58	0/1732
1	D	0.41	0/1275	0.57	0/1732
All	All	0.40	0/5107	0.58	3/6938 (0.0%)

Chiral center outliers are detected by calculating the chiral volume of a chiral center and verifying if the center is modelled as a planar moiety or with the opposite hand. A planarity outlier is detected by checking planarity of atoms in a peptide group, atoms in a mainchain group or atoms of a sidechain that are expected to be planar.

Mol	Chain	#Chirality outliers	#Planarity outliers
1	C	0	1
1	D	0	1
All	All	0	2

There are no bond length outliers.

All (3) bond angle outliers are listed below:

Mol	Chain	Res	Type	Atoms	Z	Observed(°)	Ideal(°)
1	B	95	GLY	N-CA-C	7.68	132.30	113.10
1	A	94	ILE	C-N-CA	-5.08	111.64	122.30
1	A	95	GLY	N-CA-C	5.03	125.67	113.10

There are no chirality outliers.

All (2) planarity outliers are listed below:

Mol	Chain	Res	Type	Group
1	C	94	ILE	Peptide

Continued on next page...

Continued from previous page...

Mol	Chain	Res	Type	Group
1	D	94	ILE	Peptide

5.2 Too-close contacts [i](#)

In the following table, the Non-H and H(model) columns list the number of non-hydrogen atoms and hydrogen atoms in the chain respectively. The H(added) column lists the number of hydrogen atoms added and optimized by MolProbity. The Clashes column lists the number of clashes within the asymmetric unit, whereas Symm-Clashes lists symmetry-related clashes.

Mol	Chain	Non-H	H(model)	H(added)	Clashes	Symm-Clashes
1	A	1244	0	1223	15	0
1	B	1248	0	1232	23	0
1	C	1244	0	1223	14	0
1	D	1244	0	1223	6	0
2	A	48	0	26	1	0
2	B	48	0	26	13	0
2	C	48	0	26	6	0
2	D	48	0	26	6	0
3	A	30	0	0	0	0
3	B	30	0	0	4	0
3	C	30	0	0	0	0
3	D	30	0	0	0	0
4	A	10	0	0	2	0
4	B	11	0	0	0	0
4	C	9	0	0	0	0
4	D	9	0	0	0	0
All	All	5331	0	5005	62	0

The all-atom clashscore is defined as the number of clashes found per 1000 atoms (including hydrogen atoms). The all-atom clashscore for this structure is 6.

All (62) close contacts within the same asymmetric unit are listed below, sorted by their clash magnitude.

Atom-1	Atom-2	Interatomic distance (Å)	Clash overlap (Å)
1:B:95:GLY:HA3	2:B:201:NDP:C5N	2.00	0.91
1:B:28:GLN:NE2	3:B:202:U06:OBD	2.21	0.74
1:C:44:ARG:NH1	2:C:201:NDP:O2B	2.24	0.70
1:B:95:GLY:HA3	2:B:201:NDP:H5N	1.73	0.69
1:D:96:GLY:HA3	2:D:201:NDP:O2A	1.92	0.69
1:A:53:LYS:NZ	4:A:302:HOH:O	2.16	0.66

Continued on next page...

Continued from previous page...

Atom-1	Atom-2	Interatomic distance (Å)	Clash overlap (Å)
1:A:95:GLY:O	4:A:301:HOH:O	2.14	0.65
1:B:102:LEU:HD22	2:B:201:NDP:N1A	2.12	0.64
1:A:121:ARG:HH21	1:A:127:LEU:HD13	1.62	0.64
1:B:66:SER:C	2:B:201:NDP:H8A	2.21	0.61
1:A:82:LEU:HD22	1:A:102:LEU:HG	1.84	0.57
1:A:145:SER:HB3	1:A:149:LEU:H	1.71	0.56
1:A:145:SER:N	1:A:149:LEU:O	2.32	0.55
1:C:44:ARG:NH2	1:C:67:ARG:H	2.04	0.55
2:D:201:NDP:H3B	2:D:201:NDP:H8A	1.88	0.55
2:B:201:NDP:H42N	3:B:202:U06:CAK	2.37	0.54
1:B:116:ASP:HB3	1:B:150:ARG:HB2	1.88	0.53
1:C:44:ARG:NH1	2:C:201:NDP:O3B	2.44	0.51
1:C:96:GLY:HA3	2:C:201:NDP:O1A	2.11	0.51
2:D:201:NDP:H3B	2:D:201:NDP:C8A	2.41	0.51
1:B:54:VAL:HB	1:B:57:LEU:HD23	1.93	0.50
1:B:32:ARG:HH22	3:B:202:U06:CBB	2.25	0.49
1:B:144:PHE:CE1	1:B:150:ARG:HG2	2.48	0.49
1:B:66:SER:CA	2:B:201:NDP:H8A	2.44	0.48
1:D:110:CYS:HB2	1:D:156:TYR:HB2	1.95	0.48
1:B:28:GLN:NE2	1:B:32:ARG:HH12	2.12	0.48
1:C:54:VAL:HB	1:C:57:LEU:HD23	1.96	0.47
2:D:201:NDP:C8A	2:D:201:NDP:C3B	2.93	0.47
1:B:14:ILE:O	2:B:201:NDP:H2N	2.14	0.46
1:A:116:ASP:HB3	1:A:150:ARG:HB3	1.97	0.46
1:B:110:CYS:HB2	1:B:156:TYR:HB2	1.98	0.46
1:B:28:GLN:HE21	1:B:32:ARG:HH12	1.62	0.46
1:D:14:ILE:O	2:D:201:NDP:H2N	2.16	0.46
1:D:53:LYS:HG2	1:D:54:VAL:HG13	1.97	0.46
2:D:201:NDP:H8A	2:D:201:NDP:C3B	2.44	0.45
1:C:67:ARG:HG3	2:C:201:NDP:C2A	2.48	0.44
1:B:22:TRP:O	1:B:23:ARG:NH1	2.51	0.44
1:C:82:LEU:HA	1:C:82:LEU:HD23	1.78	0.44
1:C:145:SER:C	1:C:147:SER:H	2.21	0.44
1:A:149:LEU:HD23	1:A:149:LEU:HA	1.89	0.43
1:B:67:ARG:N	2:B:201:NDP:H8A	2.33	0.43
1:A:88:SER:HA	1:A:89:PRO:HD3	1.87	0.43
1:D:142:TRP:CD2	1:D:152:ARG:HG3	2.53	0.43
1:B:96:GLY:HA2	2:B:201:NDP:O5D	2.18	0.42
1:A:14:ILE:O	2:A:201:NDP:H2N	2.19	0.42
1:B:68:GLN:HB2	1:B:71:PHE:HB2	2.02	0.42
1:B:112:VAL:HB	1:B:154:TYR:HB2	2.01	0.42

Continued on next page...

Continued from previous page...

Atom-1	Atom-2	Interatomic distance (Å)	Clash overlap (Å)
1:B:65:LEU:O	2:B:201:NDP:H1B	2.19	0.42
1:C:44:ARG:HH12	2:C:201:NDP:P2B	2.42	0.42
1:C:66:SER:O	1:C:80:GLY:HA2	2.20	0.41
1:A:68:GLN:HB2	1:A:71:PHE:HB2	2.02	0.41
1:B:95:GLY:HA2	2:B:201:NDP:H41N	2.02	0.41
1:B:95:GLY:CA	2:B:201:NDP:H41N	2.50	0.41
1:A:112:VAL:HB	1:A:154:TYR:HB2	2.03	0.41
1:A:54:VAL:HB	1:A:57:LEU:HD23	2.02	0.41
1:B:6:TRP:HB3	1:B:100:TYR:CZ	2.56	0.41
2:B:201:NDP:H42N	3:B:202:U06:CAL	2.50	0.41
1:A:53:LYS:HD2	1:C:143:ARG:HH22	1.85	0.41
1:A:53:LYS:HA	1:C:143:ARG:HH22	1.86	0.41
1:C:88:SER:HA	1:C:89:PRO:HD3	1.88	0.41
1:D:143:ARG:HG3	1:D:151:TYR:CE1	2.56	0.41
1:C:14:ILE:O	2:C:201:NDP:H2N	2.21	0.40

There are no symmetry-related clashes.

5.3 Torsion angles [i](#)

5.3.1 Protein backbone [i](#)

In the following table, the Percentiles column shows the percent Ramachandran outliers of the chain as a percentile score with respect to all X-ray entries followed by that with respect to entries of similar resolution.

The Analysed column shows the number of residues for which the backbone conformation was analysed, and the total number of residues.

Mol	Chain	Analysed	Favoured	Allowed	Outliers	Percentiles	
1	A	157/159 (99%)	152 (97%)	5 (3%)	0	100	100
1	B	158/159 (99%)	150 (95%)	5 (3%)	3 (2%)	8	1
1	C	157/159 (99%)	149 (95%)	8 (5%)	0	100	100
1	D	157/159 (99%)	150 (96%)	7 (4%)	0	100	100
All	All	629/636 (99%)	601 (96%)	25 (4%)	3 (0%)	29	15

All (3) Ramachandran outliers are listed below:

Mol	Chain	Res	Type
1	B	95	GLY
1	B	147	SER
1	B	148	GLY

5.3.2 Protein sidechains [i](#)

In the following table, the Percentiles column shows the percent sidechain outliers of the chain as a percentile score with respect to all X-ray entries followed by that with respect to entries of similar resolution.

The Analysed column shows the number of residues for which the sidechain conformation was analysed, and the total number of residues.

Mol	Chain	Analysed	Rotameric	Outliers	Percentiles	
1	A	127/127 (100%)	127 (100%)	0	100	100
1	B	128/127 (101%)	128 (100%)	0	100	100
1	C	127/127 (100%)	126 (99%)	1 (1%)	81	77
1	D	127/127 (100%)	127 (100%)	0	100	100
All	All	509/508 (100%)	508 (100%)	1 (0%)	93	92

All (1) residues with a non-rotameric sidechain are listed below:

Mol	Chain	Res	Type
1	C	33	GLU

Sometimes sidechains can be flipped to improve hydrogen bonding and reduce clashes. All (1) such sidechains are listed below:

Mol	Chain	Res	Type
1	B	28	GLN

5.3.3 RNA [i](#)

There are no RNA molecules in this entry.

5.4 Non-standard residues in protein, DNA, RNA chains [i](#)

There are no non-standard protein/DNA/RNA residues in this entry.

5.5 Carbohydrates [i](#)

There are no monosaccharides in this entry.

5.6 Ligand geometry [i](#)

8 ligands are modelled in this entry.

In the following table, the Counts columns list the number of bonds (or angles) for which Mogul statistics could be retrieved, the number of bonds (or angles) that are observed in the model and the number of bonds (or angles) that are defined in the Chemical Component Dictionary. The Link column lists molecule types, if any, to which the group is linked. The Z score for a bond length (or angle) is the number of standard deviations the observed value is removed from the expected value. A bond length (or angle) with $|Z| > 2$ is considered an outlier worth inspection. RMSZ is the root-mean-square of all Z scores of the bond lengths (or angles).

Mol	Type	Chain	Res	Link	Bond lengths			Bond angles		
					Counts	RMSZ	# Z > 2	Counts	RMSZ	# Z > 2
2	NDP	C	201	-	45,52,52	2.74	8 (17%)	53,80,80	1.47	8 (15%)
2	NDP	B	201	-	45,52,52	1.95	7 (15%)	53,80,80	1.49	7 (13%)
3	U06	D	202	-	32,32,32	1.93	5 (15%)	37,44,44	1.99	9 (24%)
3	U06	C	202	-	32,32,32	1.92	4 (12%)	37,44,44	1.84	10 (27%)
3	U06	A	202	-	32,32,32	2.18	7 (21%)	37,44,44	1.95	9 (24%)
3	U06	B	202	-	32,32,32	2.19	4 (12%)	37,44,44	2.80	20 (54%)
2	NDP	A	201	-	45,52,52	2.20	6 (13%)	53,80,80	1.38	7 (13%)
2	NDP	D	201	-	45,52,52	2.21	5 (11%)	53,80,80	1.74	12 (22%)

In the following table, the Chirals column lists the number of chiral outliers, the number of chiral centers analysed, the number of these observed in the model and the number defined in the Chemical Component Dictionary. Similar counts are reported in the Torsion and Rings columns. '-' means no outliers of that kind were identified.

Mol	Type	Chain	Res	Link	Chirals	Torsions	Rings
2	NDP	C	201	-	-	3/30/77/77	0/5/5/5
2	NDP	B	201	-	-	5/30/77/77	0/5/5/5
3	U06	D	202	-	-	4/17/18/18	0/3/3/3
3	U06	C	202	-	-	2/17/18/18	0/3/3/3
3	U06	A	202	-	-	4/17/18/18	0/3/3/3
3	U06	B	202	-	-	2/17/18/18	0/3/3/3
2	NDP	A	201	-	-	4/30/77/77	0/5/5/5
2	NDP	D	201	-	-	7/30/77/77	0/5/5/5

All (46) bond length outliers are listed below:

Mol	Chain	Res	Type	Atoms	Z	Observed(Å)	Ideal(Å)
2	C	201	NDP	P2B-O2B	16.04	1.89	1.59
2	A	201	NDP	P2B-O2B	12.02	1.82	1.59
2	D	201	NDP	P2B-O2B	11.55	1.81	1.59
2	B	201	NDP	P2B-O2B	8.87	1.76	1.59
3	B	202	U06	CAM-CAN	-7.62	1.39	1.52
3	B	202	U06	CAB-C6	-6.40	1.40	1.51
3	D	202	U06	CAB-C6	-6.38	1.40	1.51
3	A	202	U06	CAB-C6	-6.31	1.40	1.51
3	C	202	U06	CAM-CAN	-5.98	1.42	1.52
3	C	202	U06	CAB-C6	-5.93	1.41	1.51
3	A	202	U06	CAM-CAN	-5.89	1.42	1.52
3	D	202	U06	CAM-CAN	-5.48	1.42	1.52
3	D	202	U06	CAY-CBB	-4.89	1.39	1.49
3	A	202	U06	CAK-CAL	4.86	1.26	1.19
3	B	202	U06	CAY-CBB	-4.65	1.39	1.49
2	D	201	NDP	O4B-C1B	4.63	1.47	1.41
3	C	202	U06	CAY-CBB	-4.51	1.39	1.49
3	A	202	U06	CAY-CBB	-4.50	1.39	1.49
3	B	202	U06	CAV-CAT	-4.40	1.38	1.49
2	B	201	NDP	PN-O5D	4.24	1.76	1.59
2	D	201	NDP	O2B-C2B	-3.59	1.31	1.44
3	C	202	U06	CAV-CAT	-3.55	1.40	1.49
2	C	201	NDP	PN-O5D	3.53	1.73	1.59
3	A	202	U06	CAV-CAT	-3.52	1.40	1.49
2	D	201	NDP	PN-O5D	3.44	1.73	1.59
2	B	201	NDP	O4B-C1B	3.38	1.45	1.41
3	D	202	U06	CAV-CAT	-3.38	1.40	1.49
2	B	201	NDP	O2B-C2B	-3.32	1.32	1.44
2	A	201	NDP	O2B-C2B	-3.14	1.32	1.44
2	A	201	NDP	PN-O5D	3.04	1.71	1.59
2	C	201	NDP	O2B-C2B	-2.87	1.33	1.44
3	A	202	U06	CAM-CAL	2.83	1.49	1.47
2	C	201	NDP	C4A-N3A	2.69	1.39	1.35
2	C	201	NDP	C3D-C4D	2.50	1.59	1.53
2	C	201	NDP	C2A-N1A	2.47	1.38	1.33
2	B	201	NDP	C3D-C4D	2.42	1.59	1.53
2	A	201	NDP	C7N-N7N	2.28	1.39	1.33
2	B	201	NDP	C2A-N1A	2.27	1.38	1.33
3	A	202	U06	C5-C4	-2.17	1.39	1.42
2	A	201	NDP	C2A-N1A	2.12	1.37	1.33
2	A	201	NDP	C3D-C4D	2.11	1.58	1.53
2	C	201	NDP	C7N-C3N	-2.09	1.44	1.48

Continued on next page...

Continued from previous page...

Mol	Chain	Res	Type	Atoms	Z	Observed(Å)	Ideal(Å)
2	D	201	NDP	C2A-N3A	2.07	1.35	1.32
3	D	202	U06	C5-C4	-2.07	1.39	1.42
2	B	201	NDP	C7N-N7N	2.06	1.38	1.33
2	C	201	NDP	C2A-N3A	2.03	1.35	1.32

All (82) bond angle outliers are listed below:

Mol	Chain	Res	Type	Atoms	Z	Observed(°)	Ideal(°)
3	B	202	U06	CAQ-OAP-CAO	-7.24	106.60	117.53
3	D	202	U06	C2-N1-C6	6.54	121.70	116.24
3	B	202	U06	C2-N1-C6	6.47	121.63	116.24
2	D	201	NDP	PN-O3-PA	-6.40	110.88	132.83
3	C	202	U06	C2-N1-C6	5.92	121.17	116.24
3	A	202	U06	C2-N1-C6	5.79	121.07	116.24
3	B	202	U06	CAS-CAT-CAV	-5.00	112.69	121.36
3	B	202	U06	CAW-CAV-CAT	-4.99	112.71	121.36
2	B	201	NDP	PN-O3-PA	-4.45	117.56	132.83
2	C	201	NDP	PN-O3-PA	-4.14	118.62	132.83
2	A	201	NDP	PN-O3-PA	-4.08	118.83	132.83
3	A	202	U06	CAB-C6-C5	-3.87	119.90	122.66
2	B	201	NDP	O2B-P2B-O1X	-3.76	94.88	109.39
3	A	202	U06	NAI-C4-N3	3.64	122.18	117.03
3	C	202	U06	CAB-C6-C5	-3.60	120.10	122.66
3	B	202	U06	C4-C5-CAK	3.55	124.72	118.57
3	C	202	U06	C4-C5-CAK	3.50	124.63	118.57
2	D	201	NDP	PA-O5B-C5B	-3.49	101.22	121.68
3	D	202	U06	CAQ-OAP-CAO	-3.45	112.32	117.53
3	B	202	U06	CAB-C6-C5	-3.39	120.24	122.66
3	B	202	U06	NAI-C4-N3	3.39	121.82	117.03
3	D	202	U06	C4-C5-CAK	3.38	124.43	118.57
3	D	202	U06	NAI-C4-N3	3.35	121.77	117.03
3	A	202	U06	C2-N3-C4	3.35	120.68	116.99
3	B	202	U06	CAT-CAU-CAN	-3.24	117.05	121.90
2	D	201	NDP	O2B-P2B-O1X	-3.23	96.93	109.39
3	D	202	U06	CAB-C6-C5	-3.22	120.37	122.66
3	B	202	U06	CBA-CAV-CAT	3.19	126.89	121.36
2	A	201	NDP	O2B-P2B-O1X	-3.18	97.13	109.39
2	C	201	NDP	O2B-P2B-O1X	-3.16	97.20	109.39
3	B	202	U06	CAU-CAT-CAV	3.07	125.94	120.86
3	A	202	U06	N3-C2-N1	-2.99	120.72	125.42
3	A	202	U06	C4-C5-CAK	2.97	123.72	118.57
3	C	202	U06	CAQ-OAP-CAO	-2.88	113.19	117.53

Continued on next page...

Continued from previous page...

Mol	Chain	Res	Type	Atoms	Z	Observed(°)	Ideal(°)
3	D	202	U06	C5-C4-NAI	-2.88	118.30	121.62
3	A	202	U06	C5-C4-NAI	-2.86	118.33	121.62
2	D	201	NDP	C2A-N1A-C6A	-2.85	113.89	118.75
3	D	202	U06	N3-C2-N1	-2.84	120.97	125.42
2	C	201	NDP	O4B-C4B-C3B	2.83	110.71	105.11
3	C	202	U06	NAI-C4-N3	2.70	120.85	117.03
3	B	202	U06	N3-C2-N1	-2.70	121.19	125.42
2	C	201	NDP	PA-O5B-C5B	-2.69	105.92	121.68
2	D	201	NDP	C2B-C3B-C4B	-2.64	96.25	101.99
2	D	201	NDP	C3B-C2B-C1B	-2.64	97.93	102.89
3	D	202	U06	C2-N3-C4	2.63	119.89	116.99
3	B	202	U06	NAF-C2-N3	2.62	121.32	117.25
2	B	201	NDP	O2B-C2B-C1B	-2.60	100.73	110.10
2	D	201	NDP	O3X-P2B-O2X	2.60	117.57	107.64
2	B	201	NDP	O3X-P2B-O2X	2.57	117.47	107.64
2	A	201	NDP	O3X-P2B-O2X	2.56	117.41	107.64
3	B	202	U06	C2-N3-C4	2.55	119.80	116.99
3	B	202	U06	CAZ-CBA-CAV	-2.55	117.47	121.13
3	C	202	U06	N3-C2-N1	-2.53	121.44	125.42
2	C	201	NDP	O3X-P2B-O2X	2.51	117.25	107.64
3	A	202	U06	OBC-CBB-CAY	2.51	121.35	114.85
3	D	202	U06	OBC-CBB-CAY	2.50	121.34	114.85
2	D	201	NDP	O7N-C7N-N7N	-2.47	117.11	122.88
2	D	201	NDP	PN-O5D-C5D	-2.44	107.34	121.68
3	B	202	U06	C5-C4-NAI	-2.39	118.86	121.62
3	C	202	U06	C5-C4-NAI	-2.33	118.93	121.62
3	C	202	U06	C2-N3-C4	2.31	119.54	116.99
3	B	202	U06	CAX-CAY-CBB	-2.31	115.85	120.39
3	C	202	U06	OBC-CBB-CAY	2.28	120.76	114.85
3	A	202	U06	CAQ-OAP-CAO	-2.24	114.15	117.53
2	A	201	NDP	C3B-C2B-C1B	-2.24	98.68	102.89
2	B	201	NDP	PN-O5D-C5D	-2.23	108.60	121.68
3	B	202	U06	CAS-CAT-CAU	2.23	121.31	118.16
2	C	201	NDP	C2A-N1A-C6A	-2.22	114.95	118.75
2	A	201	NDP	O7N-C7N-N7N	-2.16	117.83	122.88
3	B	202	U06	CAU-CAN-CAO	2.16	120.53	118.26
3	B	202	U06	OAP-CAO-CAR	-2.14	120.70	124.37
2	D	201	NDP	O5B-PA-O1A	-2.13	100.76	109.07
2	B	201	NDP	C4A-C5A-N7A	2.13	111.61	109.40
2	C	201	NDP	C3N-C2N-N1N	-2.12	120.07	123.10
2	D	201	NDP	C4A-C5A-N7A	2.11	111.59	109.40
2	A	201	NDP	PA-O5B-C5B	-2.09	109.41	121.68

Continued on next page...

Continued from previous page...

Mol	Chain	Res	Type	Atoms	Z	Observed(°)	Ideal(°)
2	C	201	NDP	O2A-PA-O1A	2.06	122.43	112.24
3	B	202	U06	CAW-CAX-CAY	-2.06	118.39	120.78
2	A	201	NDP	C2A-N1A-C6A	-2.05	115.24	118.75
3	C	202	U06	CAB-C6-N1	2.05	121.16	116.66
2	D	201	NDP	O2N-PN-O5D	-2.04	98.25	107.75
2	B	201	NDP	PA-O5B-C5B	-2.01	109.91	121.68

There are no chirality outliers.

All (31) torsion outliers are listed below:

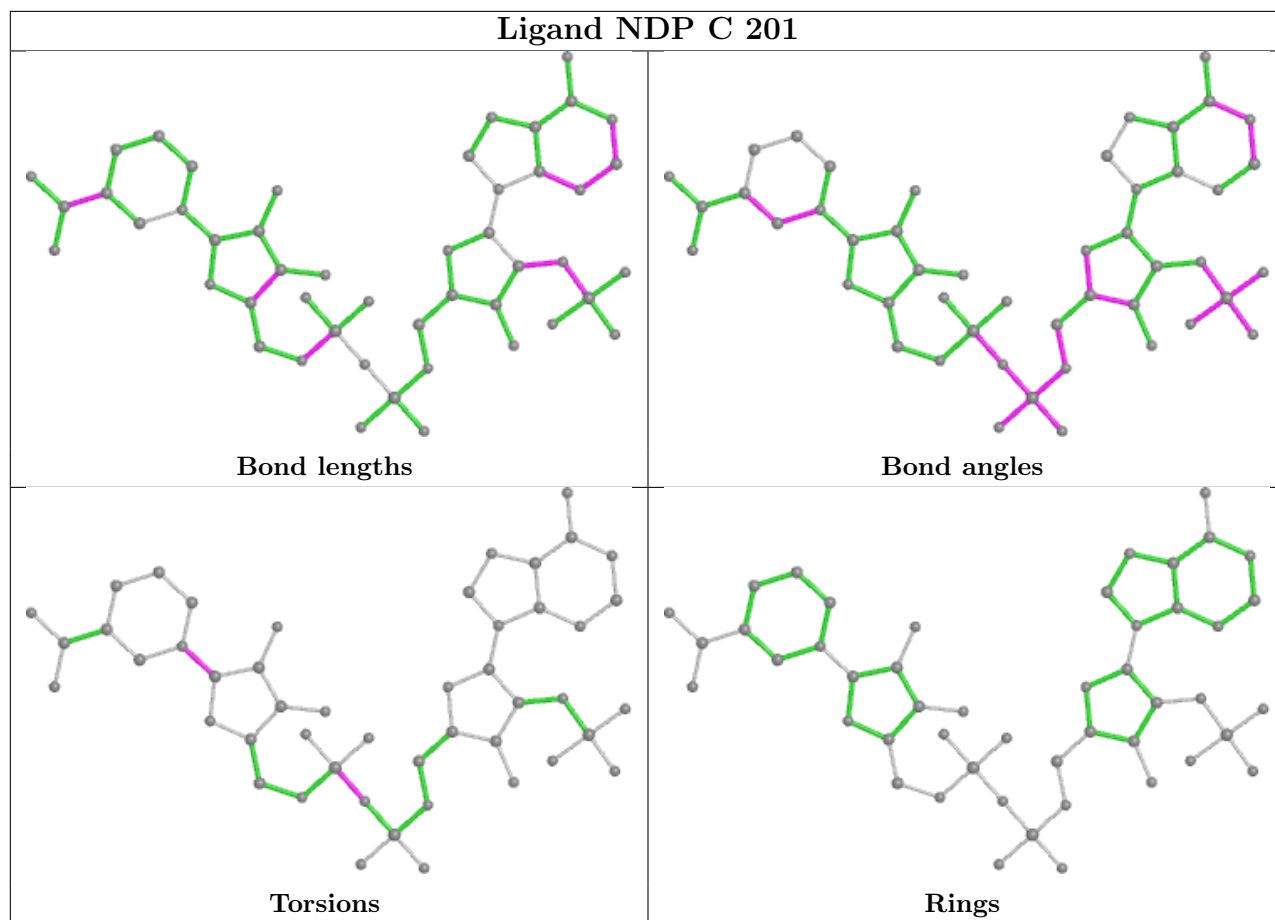
Mol	Chain	Res	Type	Atoms
2	B	201	NDP	PA-O3-PN-O5D
2	C	201	NDP	PA-O3-PN-O5D
2	D	201	NDP	C5B-O5B-PA-O2A
3	A	202	U06	CAL-CAM-CAN-CAU
3	B	202	U06	CAL-CAM-CAN-CAU
3	C	202	U06	CAL-CAM-CAN-CAU
3	D	202	U06	CAL-CAM-CAN-CAU
2	A	201	NDP	PA-O3-PN-O5D
2	D	201	NDP	C3B-C4B-C5B-O5B
3	A	202	U06	CAL-CAM-CAN-CAO
3	B	202	U06	CAL-CAM-CAN-CAO
3	C	202	U06	CAL-CAM-CAN-CAO
3	D	202	U06	CAL-CAM-CAN-CAO
2	B	201	NDP	C2D-C1D-N1N-C2N
2	A	201	NDP	O4D-C1D-N1N-C2N
2	C	201	NDP	O4D-C1D-N1N-C2N
2	D	201	NDP	O4D-C1D-N1N-C2N
2	A	201	NDP	C2D-C1D-N1N-C2N
2	C	201	NDP	C2D-C1D-N1N-C2N
2	D	201	NDP	C2D-C1D-N1N-C2N
2	B	201	NDP	O4D-C1D-N1N-C2N
2	B	201	NDP	C2D-C1D-N1N-C6N
3	A	202	U06	C5-C6-CAB-CAA
2	D	201	NDP	O4B-C4B-C5B-O5B
2	D	201	NDP	C5B-O5B-PA-O3
2	A	201	NDP	C5B-O5B-PA-O1A
2	B	201	NDP	C5B-O5B-PA-O1A
2	D	201	NDP	C5D-O5D-PN-O1N
3	D	202	U06	C5-C6-CAB-CAA
3	A	202	U06	N1-C6-CAB-CAA
3	D	202	U06	N1-C6-CAB-CAA

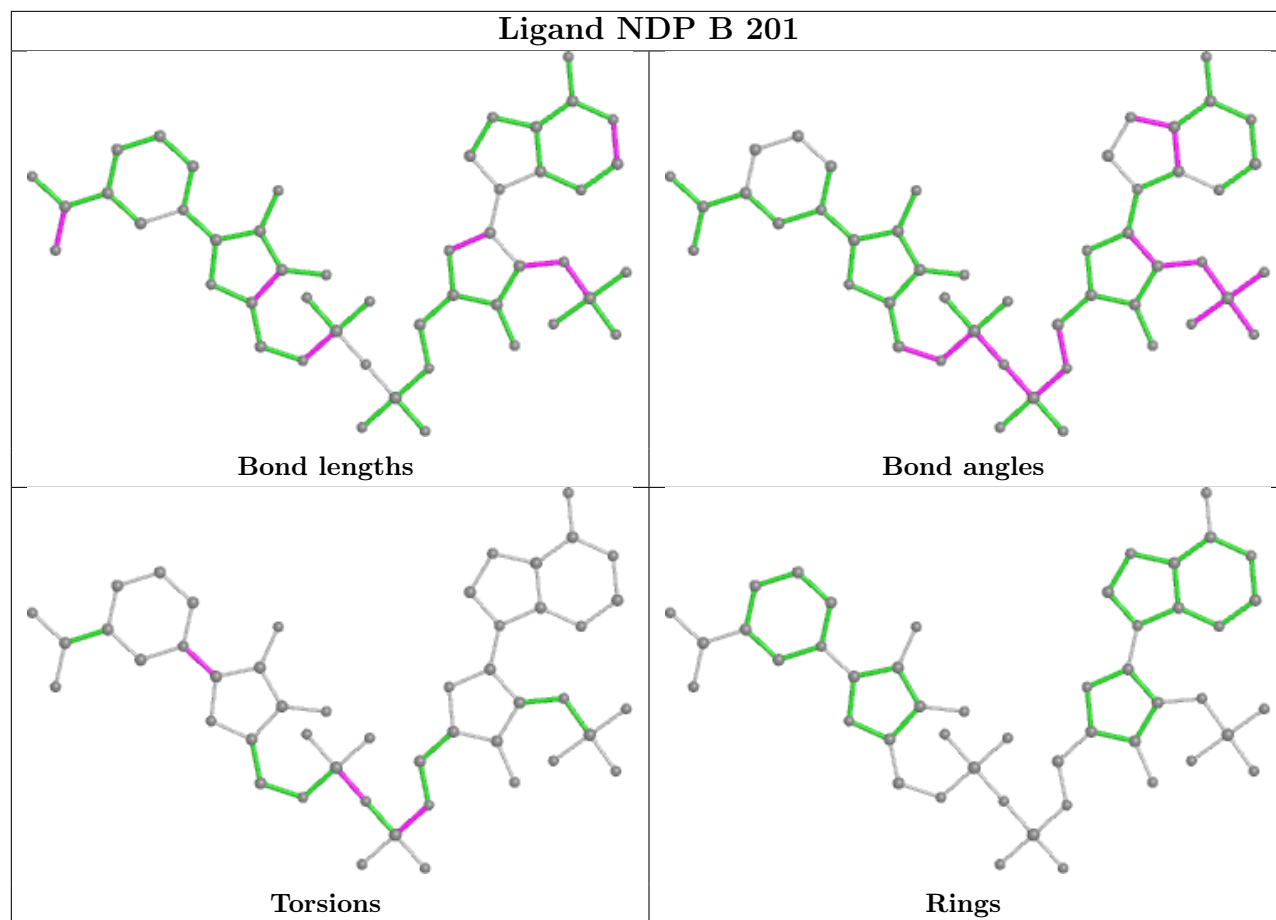
There are no ring outliers.

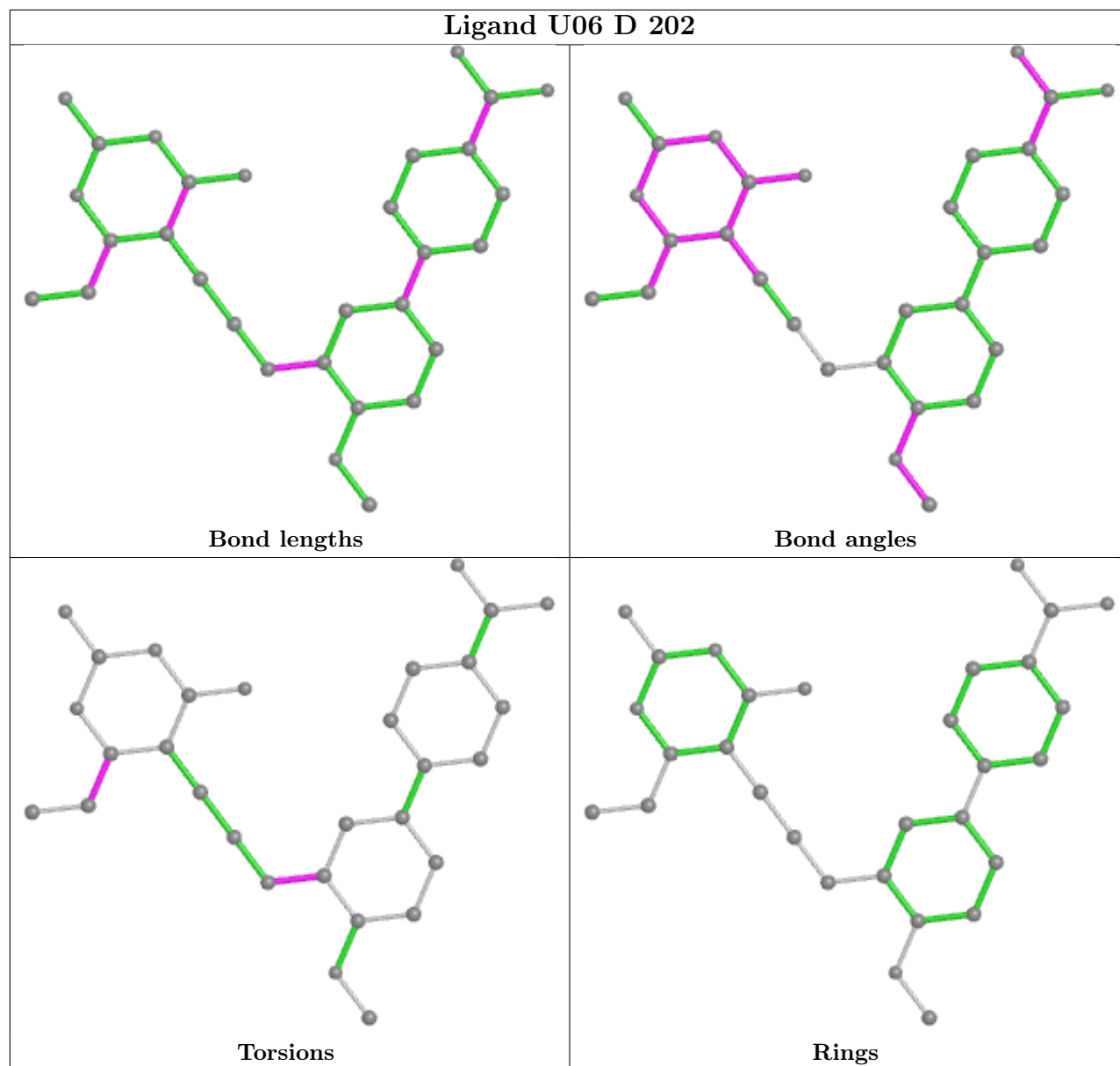
5 monomers are involved in 28 short contacts:

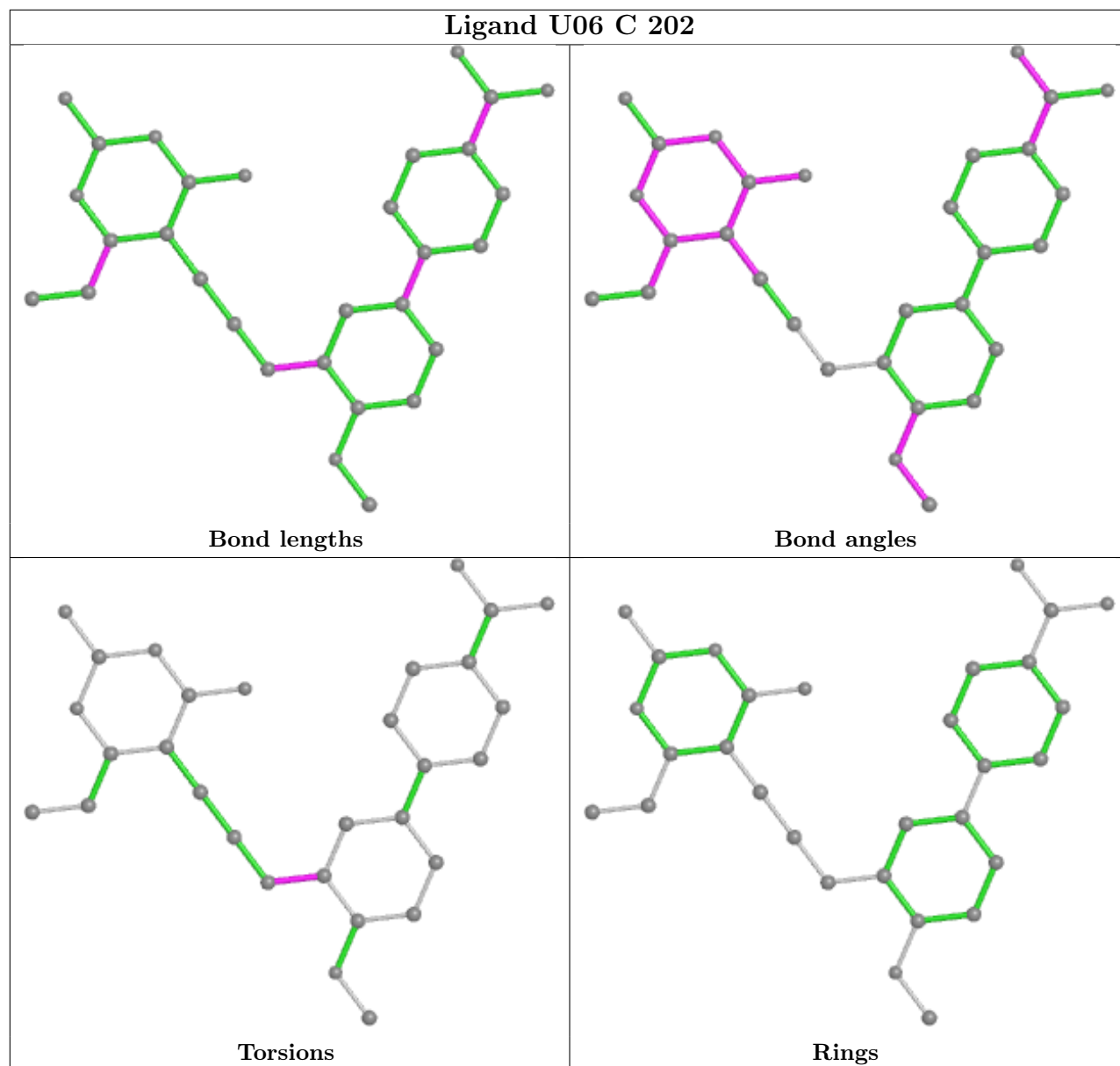
Mol	Chain	Res	Type	Clashes	Symm-Clashes
2	C	201	NDP	6	0
2	B	201	NDP	13	0
3	B	202	U06	4	0
2	A	201	NDP	1	0
2	D	201	NDP	6	0

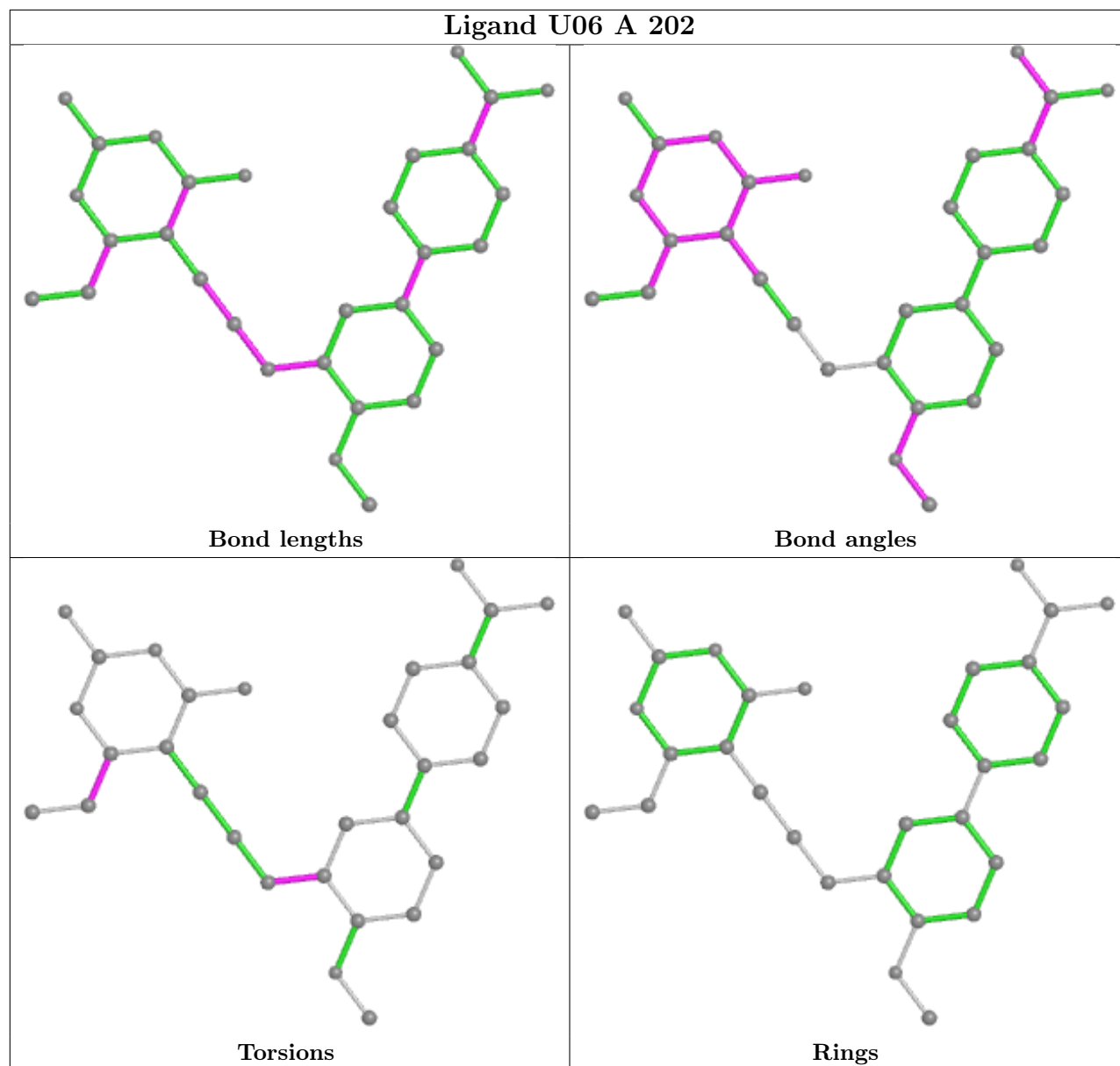
The following is a two-dimensional graphical depiction of Mogul quality analysis of bond lengths, bond angles, torsion angles, and ring geometry for all instances of the Ligand of Interest. In addition, ligands with molecular weight > 250 and outliers as shown on the validation Tables will also be included. For torsion angles, if less than 5% of the Mogul distribution of torsion angles is within 10 degrees of the torsion angle in question, then that torsion angle is considered an outlier. Any bond that is central to one or more torsion angles identified as an outlier by Mogul will be highlighted in the graph. For rings, the root-mean-square deviation (RMSD) between the ring in question and similar rings identified by Mogul is calculated over all ring torsion angles. If the average RMSD is greater than 60 degrees and the minimal RMSD between the ring in question and any Mogul-identified rings is also greater than 60 degrees, then that ring is considered an outlier. The outliers are highlighted in purple. The color gray indicates Mogul did not find sufficient equivalents in the CSD to analyse the geometry.

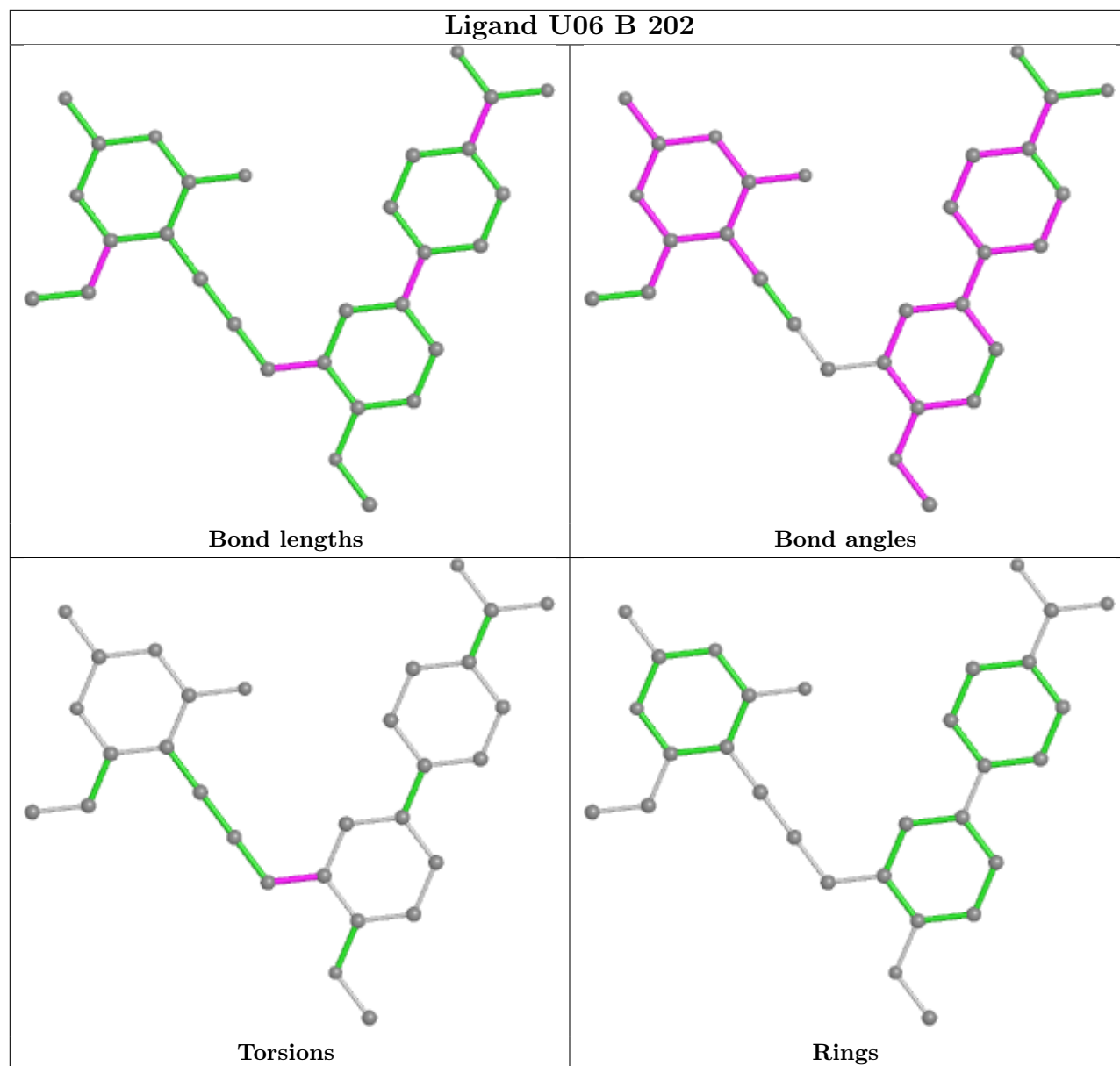


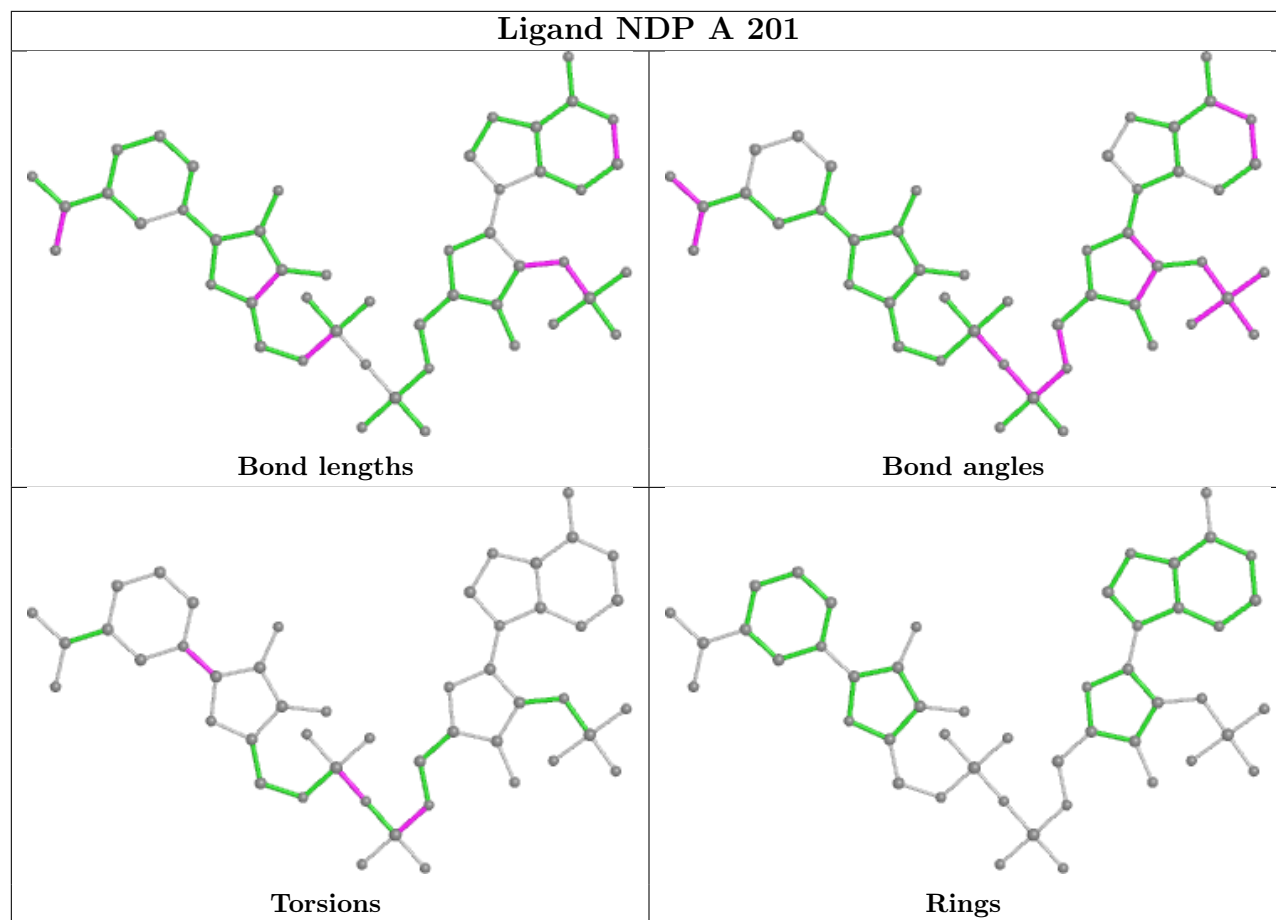


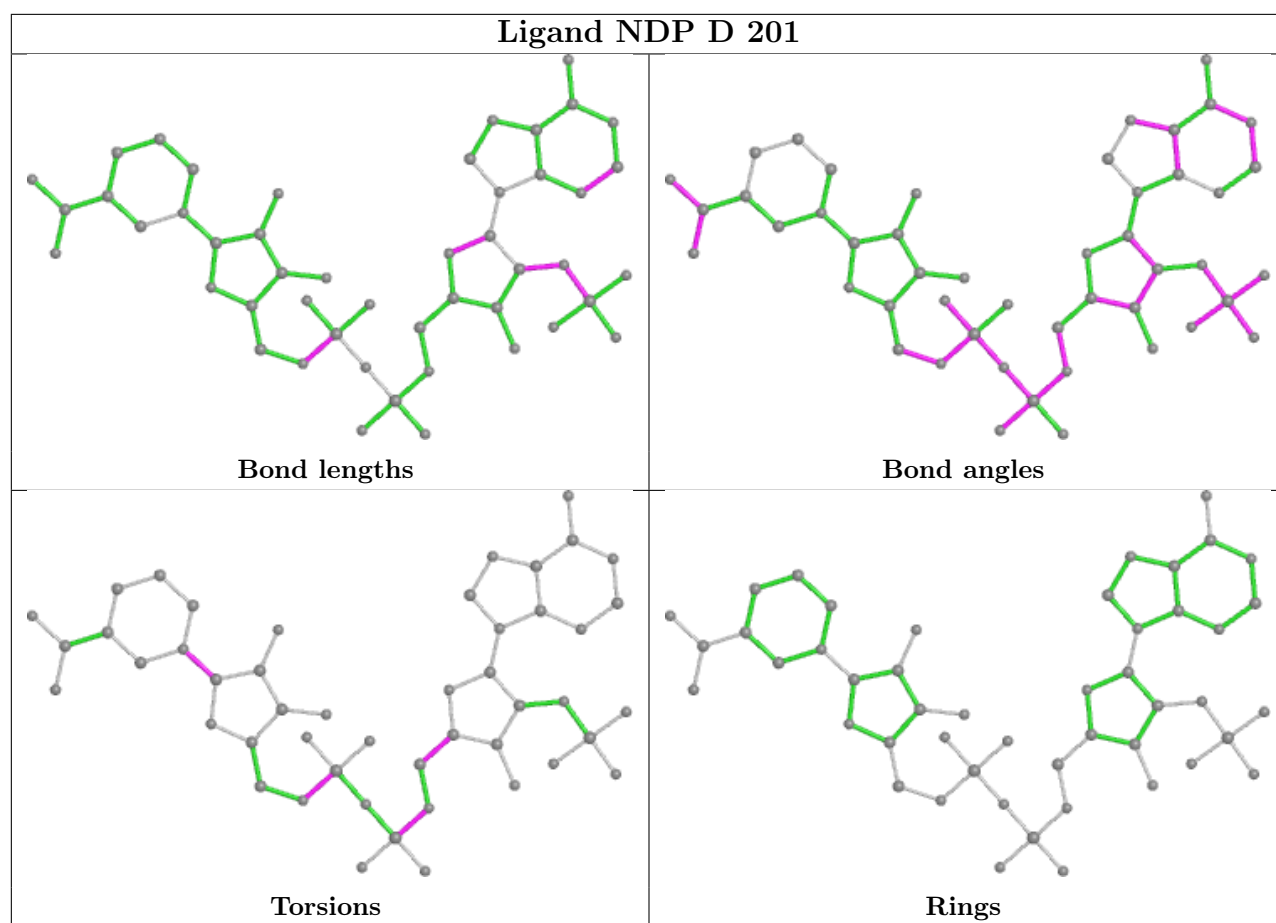












5.7 Other polymers [\(i\)](#)

There are no such residues in this entry.

5.8 Polymer linkage issues [\(i\)](#)

There are no chain breaks in this entry.

6 Fit of model and data

6.1 Protein, DNA and RNA chains

In the following table, the column labelled ‘#RSRZ > 2’ contains the number (and percentage) of RSRZ outliers, followed by percent RSRZ outliers for the chain as percentile scores relative to all X-ray entries and entries of similar resolution. The OWAB column contains the minimum, median, 95th percentile and maximum values of the occupancy-weighted average B-factor per residue. The column labelled ‘Q < 0.9’ lists the number of (and percentage) of residues with an average occupancy less than 0.9.

Mol	Chain	Analysed	<RSRZ>	#RSRZ>2	OWAB(Å ²)	Q<0.9
1	A	159/159 (100%)	0.68	7 (4%) 34 28	22, 32, 46, 55	0
1	B	159/159 (100%)	0.62	7 (4%) 34 28	21, 32, 50, 59	0
1	C	159/159 (100%)	0.61	9 (5%) 23 19	22, 32, 46, 59	0
1	D	159/159 (100%)	0.52	4 (2%) 57 52	21, 32, 53, 65	0
All	All	636/636 (100%)	0.61	27 (4%) 36 30	21, 32, 50, 65	0

All (27) RSRZ outliers are listed below:

Mol	Chain	Res	Type	RSRZ
1	B	69	ALA	3.7
1	C	146	ARG	3.5
1	B	149	LEU	3.2
1	D	146	ARG	3.0
1	B	136	ARG	3.0
1	A	146	ARG	2.9
1	D	23	ARG	2.9
1	A	71	PHE	2.9
1	C	136	ARG	2.6
1	D	95	GLY	2.6
1	C	157	HIS	2.5
1	A	149	LEU	2.4
1	B	95	GLY	2.4
1	C	130	VAL	2.4
1	A	130	VAL	2.3
1	B	130	VAL	2.3
1	B	72	MET	2.3
1	C	149	LEU	2.3
1	A	95	GLY	2.3
1	A	65	LEU	2.2
1	B	96	GLY	2.2

Continued on next page...

Continued from previous page...

Mol	Chain	Res	Type	RSRZ
1	C	145	SER	2.2
1	A	70	ASP	2.2
1	D	69	ALA	2.2
1	C	144	PHE	2.1
1	C	95	GLY	2.1
1	C	147	SER	2.0

6.2 Non-standard residues in protein, DNA, RNA chains [i](#)

There are no non-standard protein/DNA/RNA residues in this entry.

6.3 Carbohydrates [i](#)

There are no monosaccharides in this entry.

6.4 Ligands [i](#)

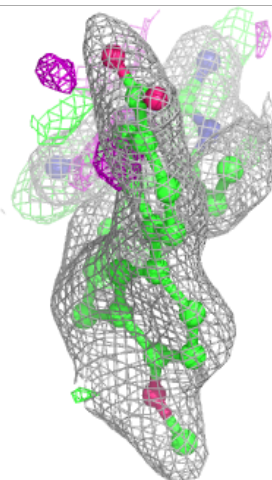
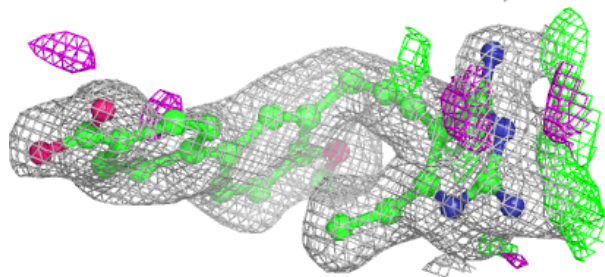
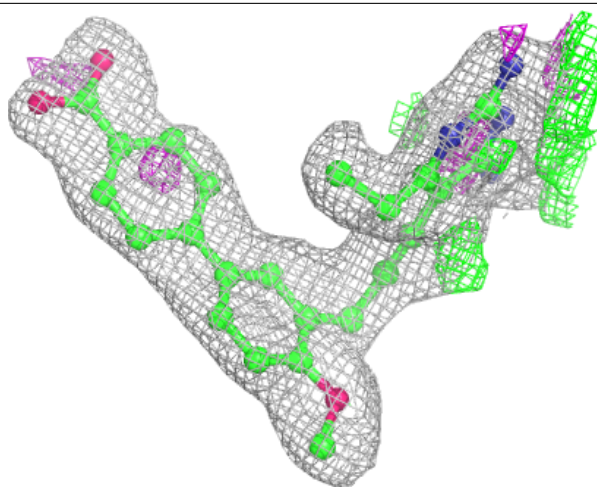
In the following table, the Atoms column lists the number of modelled atoms in the group and the number defined in the chemical component dictionary. The B-factors column lists the minimum, median, 95th percentile and maximum values of B factors of atoms in the group. The column labelled 'Q< 0.9' lists the number of atoms with occupancy less than 0.9.

Mol	Type	Chain	Res	Atoms	RSCC	RSR	B-factors(Å ²)	Q<0.9
3	U06	C	202	30/30	0.81	0.15	23,33,39,44	0
3	U06	B	202	30/30	0.82	0.20	21,37,54,61	0
3	U06	D	202	30/30	0.85	0.17	22,32,41,43	0
3	U06	A	202	30/30	0.88	0.13	23,33,39,44	0
2	NDP	D	201	48/48	0.89	0.16	25,33,52,57	0
2	NDP	C	201	48/48	0.90	0.16	26,32,53,64	0
2	NDP	A	201	48/48	0.91	0.14	26,31,39,45	0
2	NDP	B	201	48/48	0.91	0.17	26,32,42,51	0

The following is a graphical depiction of the model fit to experimental electron density of all instances of the Ligand of Interest. In addition, ligands with molecular weight > 250 and outliers as shown on the geometry validation Tables will also be included. Each fit is shown from different orientation to approximate a three-dimensional view.

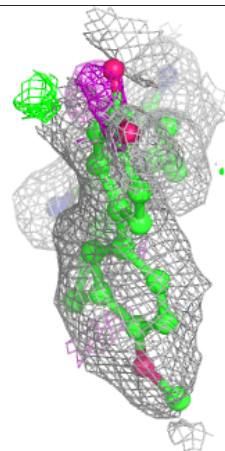
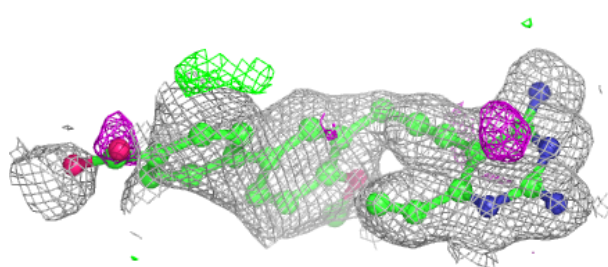
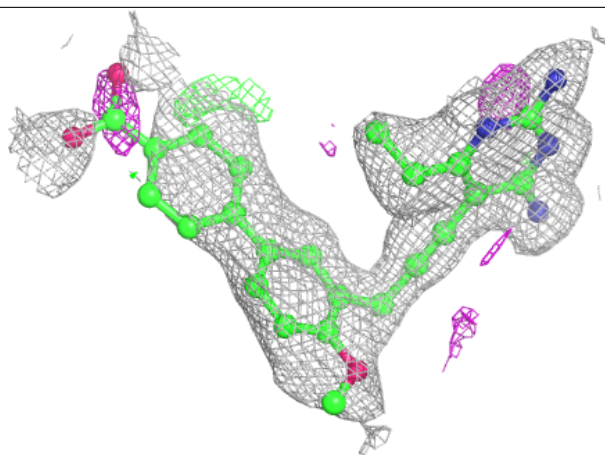
Electron density around U06 C 202:

$2mF_o-DF_c$ (at 0.7 rmsd) in gray
 mF_o-DF_c (at 3 rmsd) in purple (negative)
and green (positive)



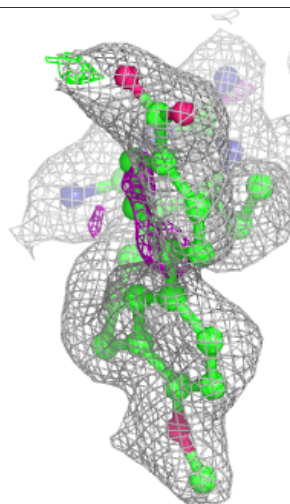
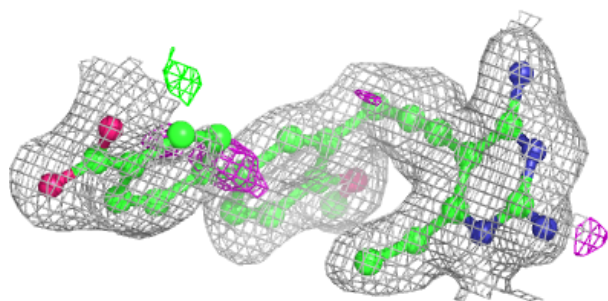
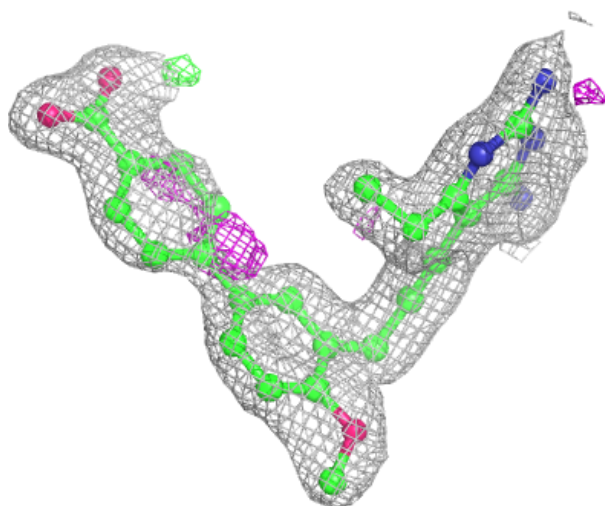
Electron density around U06 B 202:

$2mF_o-DF_c$ (at 0.7 rmsd) in gray
 mF_o-DF_c (at 3 rmsd) in purple (negative)
and green (positive)



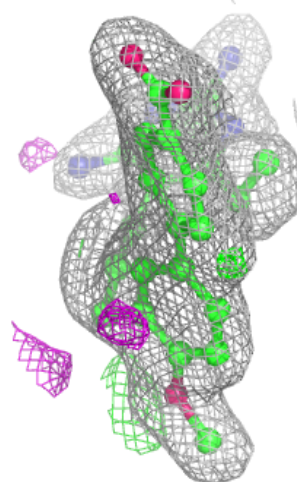
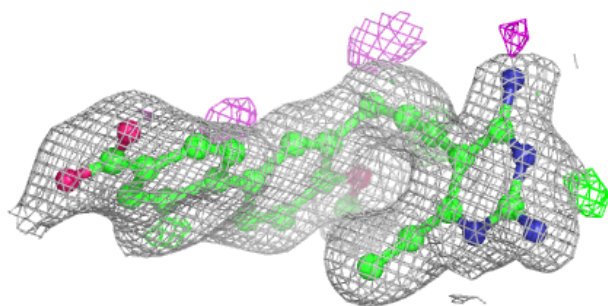
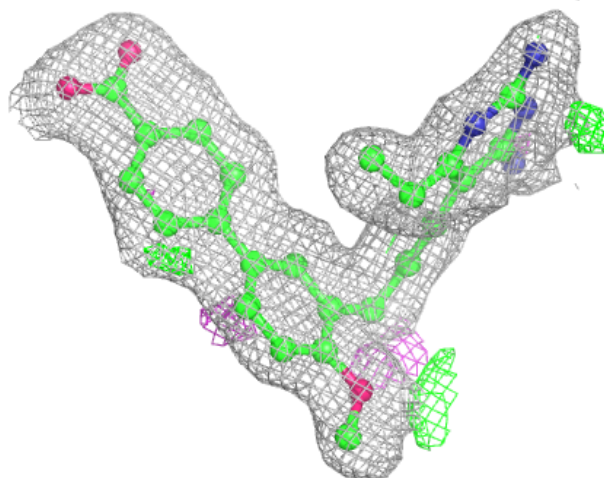
Electron density around U06 D 202:

$2mF_o-DF_c$ (at 0.7 rmsd) in gray
 mF_o-DF_c (at 3 rmsd) in purple (negative)
and green (positive)



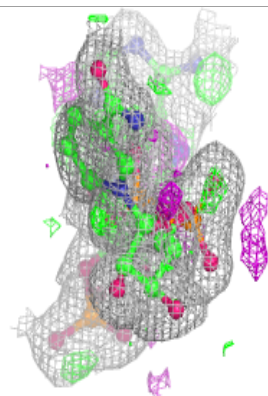
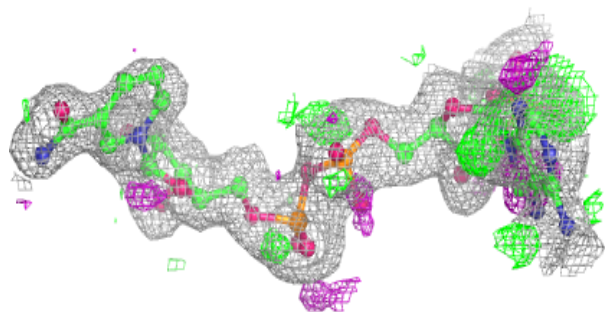
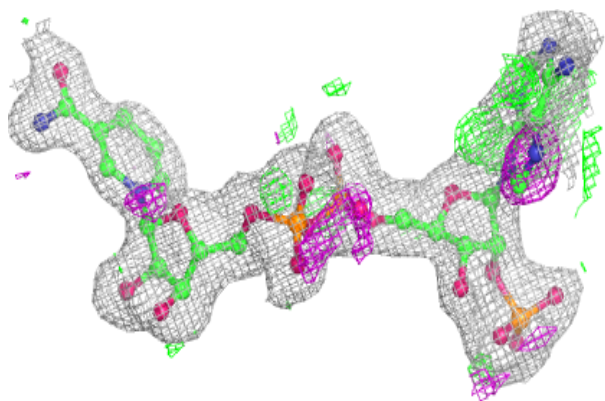
Electron density around U06 A 202:

$2mF_o-DF_c$ (at 0.7 rmsd) in gray
 mF_o-DF_c (at 3 rmsd) in purple (negative)
and green (positive)

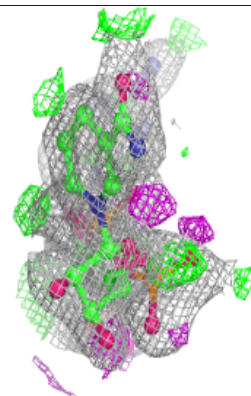
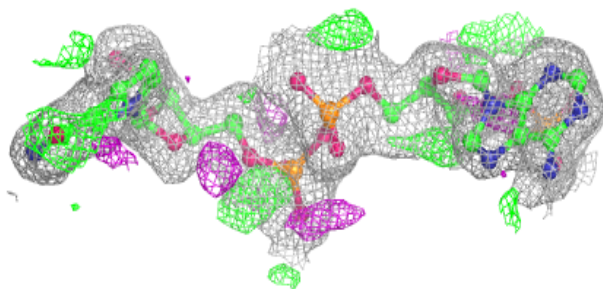
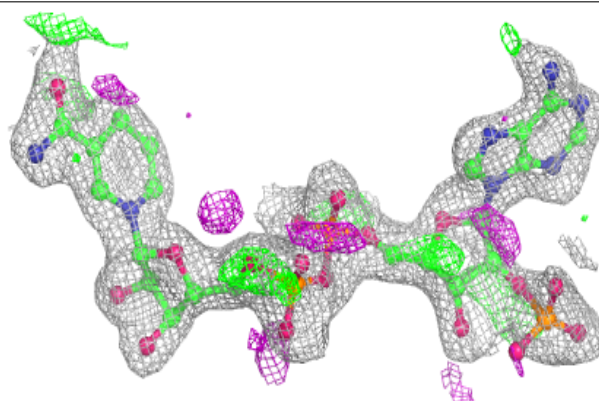


Electron density around NDP D 201:

$2mF_o-DF_c$ (at 0.7 rmsd) in gray
 mF_o-DF_c (at 3 rmsd) in purple (negative)
and green (positive)

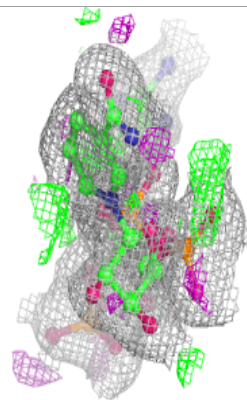
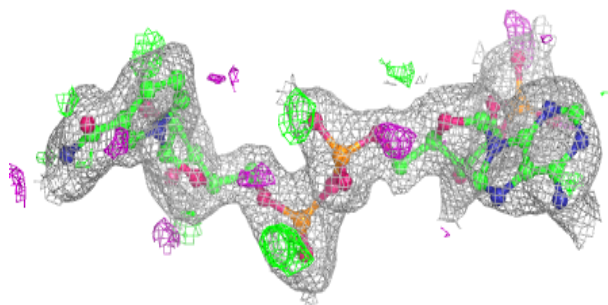
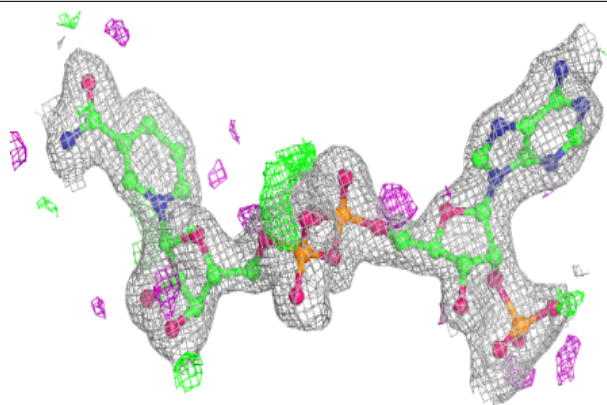
**Electron density around NDP C 201:**

$2mF_o-DF_c$ (at 0.7 rmsd) in gray
 mF_o-DF_c (at 3 rmsd) in purple (negative)
and green (positive)

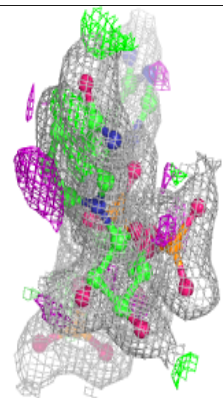
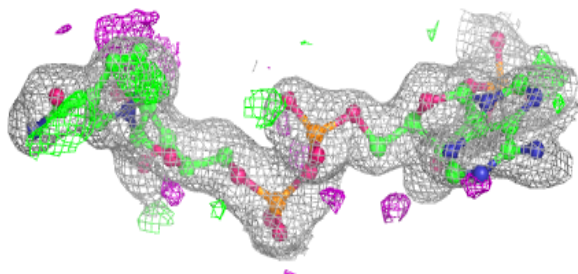
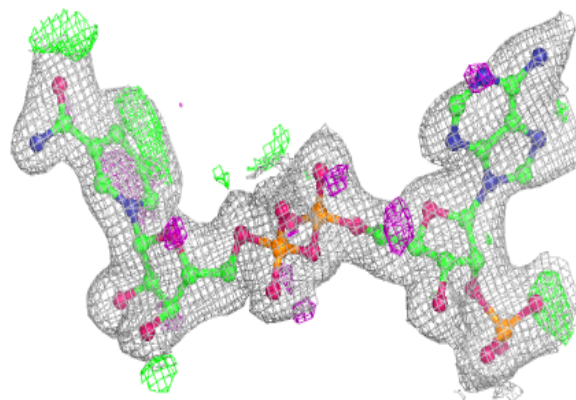


Electron density around NDP A 201:

$2mF_o-DF_c$ (at 0.7 rmsd) in gray
 mF_o-DF_c (at 3 rmsd) in purple (negative)
and green (positive)

**Electron density around NDP B 201:**

$2mF_o-DF_c$ (at 0.7 rmsd) in gray
 mF_o-DF_c (at 3 rmsd) in purple (negative)
and green (positive)



6.5 Other polymers [i](#)

There are no such residues in this entry.