



# Full wwPDB X-ray Structure Validation Report ⓘ

Jun 22, 2024 – 05:51 PM EDT

PDB ID : 5ID7  
Title : Crystal structure of human serum albumin in complex with phosphorodithioate derivative of myristoyl cyclic phosphatidic acid (cPA)  
Authors : Sekula, B.; Bujacz, A.; Rytczak, P.; Bujacz, G.  
Deposited on : 2016-02-24  
Resolution : 2.26 Å (reported)

This is a Full wwPDB X-ray Structure Validation Report for a publicly released PDB entry.

We welcome your comments at [validation@mail.wwpdb.org](mailto:validation@mail.wwpdb.org)

A user guide is available at

<https://www.wwpdb.org/validation/2017/XrayValidationReportHelp>

with specific help available everywhere you see the ⓘ symbol.

The types of validation reports are described at

<http://www.wwpdb.org/validation/2017/FAQs#types>.

---

The following versions of software and data (see [references ⓘ](#)) were used in the production of this report:

MolProbity : 4.02b-467  
Mogul : 1.8.5 (274361), CSD as541be (2020)  
Xtriage (Phenix) : 1.13  
EDS : 2.37.1  
buster-report : 1.1.7 (2018)  
Percentile statistics : 20191225.v01 (using entries in the PDB archive December 25th 2019)  
Refmac : 5.8.0158  
CCP4 : 7.0.044 (Gargrove)  
Ideal geometry (proteins) : Engh & Huber (2001)  
Ideal geometry (DNA, RNA) : Parkinson et al. (1996)  
Validation Pipeline (wwPDB-VP) : 2.37.1

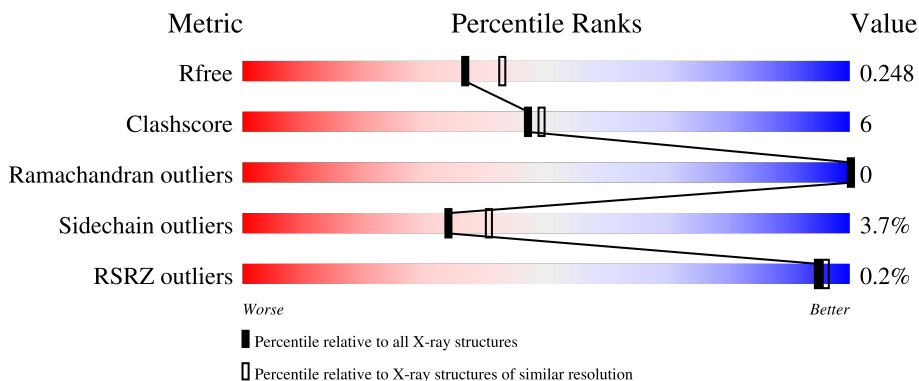
# 1 Overall quality at a glance

The following experimental techniques were used to determine the structure:

*X-RAY DIFFRACTION*

The reported resolution of this entry is 2.26 Å.

Percentile scores (ranging between 0-100) for global validation metrics of the entry are shown in the following graphic. The table shows the number of entries on which the scores are based.



Metric	Whole archive (#Entries)	Similar resolution (#Entries, resolution range(Å))
$R_{free}$	130704	1377 (2.26-2.26)
Clashscore	141614	1487 (2.26-2.26)
Ramachandran outliers	138981	1449 (2.26-2.26)
Sidechain outliers	138945	1450 (2.26-2.26)
RSRZ outliers	127900	1356 (2.26-2.26)

The table below summarises the geometric issues observed across the polymeric chains and their fit to the electron density. The red, orange, yellow and green segments of the lower bar indicate the fraction of residues that contain outliers for  $\geq 3$ , 2, 1 and 0 types of geometric quality criteria respectively. A grey segment represents the fraction of residues that are not modelled. The numeric value for each fraction is indicated below the corresponding segment, with a dot representing fractions  $\leq 5\%$ . The upper red bar (where present) indicates the fraction of residues that have poor fit to the electron density. The numeric value is given above the bar.

Mol	Chain	Length	Quality of chain
1	A	585	
1	B	585	

## 2 Entry composition i

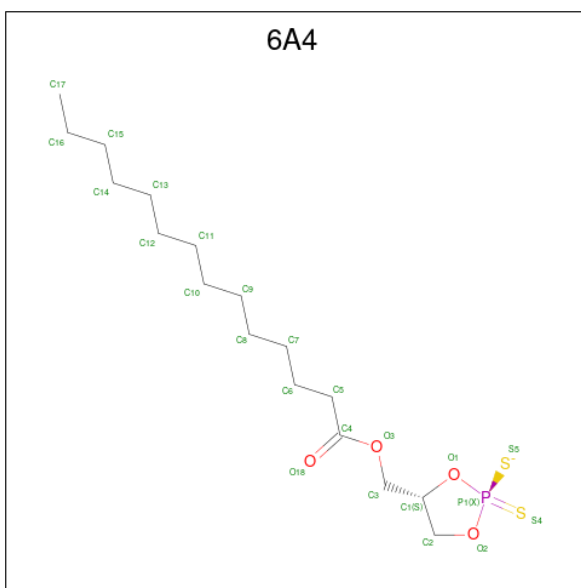
There are 5 unique types of molecules in this entry. The entry contains 9779 atoms, of which 0 are hydrogens and 0 are deuteriums.

In the tables below, the ZeroOcc column contains the number of atoms modelled with zero occupancy, the AltConf column contains the number of residues with at least one atom in alternate conformation and the Trace column contains the number of residues modelled with at most 2 atoms.

- Molecule 1 is a protein called Serum albumin.

Mol	Chain	Residues	Atoms					ZeroOcc	AltConf	Trace
			Total	C	N	O	S			
1	A	582	Total 4638	C 2928	N 786	O 883	S 41	0	1	0
1	B	582	Total 4636	C 2927	N 783	O 885	S 41	0	1	0

- Molecule 2 is (4S)-2-sulfanylidene-4-[(tetradecanoyloxy)methyl]-1,3,2lambda 5 -dioxaphospholane-2-thiolate (three-letter code: 6A4) (formula: C<sub>17</sub>H<sub>32</sub>O<sub>4</sub>PS<sub>2</sub>).



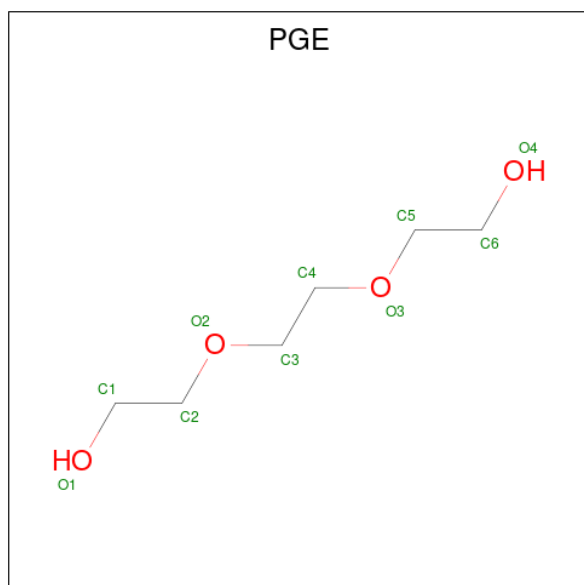
Mol	Chain	Residues	Atoms					ZeroOcc	AltConf
			Total	C	O	P	S		
2	A	1	Total 24	C 17	O 4	P 1	S 2	0	0
2	A	1	Total 24	C 17	O 4	P 1	S 2	0	0
2	A	1	Total 24	C 17	O 4	P 1	S 2	0	0
2	B	1	Total 24	C 17	O 4	P 1	S 2	0	0

*Continued on next page...*

Continued from previous page...

Mol	Chain	Residues	Atoms					ZeroOcc	AltConf
2	B	1	Total	C	O	P	S	0	0
			24	17	4	1	2		
2	B	1	Total	C	O	P	S	0	0
			24	17	4	1	2		

- Molecule 3 is TRIETHYLENE GLYCOL (three-letter code: PGE) (formula: C<sub>6</sub>H<sub>14</sub>O<sub>4</sub>).



Mol	Chain	Residues	Atoms			ZeroOcc	AltConf
3	A	1	Total	C	O	0	0
			10	6	4		
3	A	1	Total	C	O	0	0
			10	6	4		
3	B	1	Total	C	O	0	0
			10	6	4		

- Molecule 4 is DI(HYDROXYETHYL)ETHER (three-letter code: PEG) (formula: C<sub>4</sub>H<sub>10</sub>O<sub>3</sub>).



Mol	Chain	Residues	Atoms	ZeroOcc	AltConf
4	A	1	Total C O 7 4 3	0	0
4	A	1	Total C O 7 4 3	0	0
4	B	1	Total C O 7 4 3	0	0

- Molecule 5 is water.

Mol	Chain	Residues	Atoms	ZeroOcc	AltConf
5	A	151	Total O 151 151	0	0
5	B	159	Total O 159 159	0	0



## 4 Data and refinement statistics i

Property	Value	Source
Space group	P 1	Depositor
Cell constants a, b, c, $\alpha$ , $\beta$ , $\gamma$	37.90Å 85.17Å 96.31Å 105.46° 89.78° 101.34°	Depositor
Resolution (Å)	45.90 – 2.26 33.85 – 2.26	Depositor EDS
% Data completeness (in resolution range)	93.6 (45.90-2.26) 86.8 (33.85-2.26)	Depositor EDS
$R_{merge}$	0.05	Depositor
$R_{sym}$	(Not available)	Depositor
$\langle I/\sigma(I) \rangle$ <sup>1</sup>	2.04 (at 2.27Å)	Xtrriage
Refinement program	REFMAC 5.8.0135	Depositor
R, $R_{free}$	0.206 , 0.253 0.210 , 0.248	Depositor DCC
$R_{free}$ test set	1012 reflections (2.04%)	wwPDB-VP
Wilson B-factor (Å <sup>2</sup> )	38.2	Xtrriage
Anisotropy	0.077	Xtrriage
Bulk solvent $k_{sol}$ (e/Å <sup>3</sup> ), $B_{sol}$ (Å <sup>2</sup> )	0.30 , 18.7	EDS
L-test for twinning <sup>2</sup>	$\langle  L  \rangle = 0.46$ , $\langle L^2 \rangle = 0.28$	Xtrriage
Estimated twinning fraction	0.247 for h,-h-k,-l	Xtrriage
$F_o, F_c$ correlation	0.95	EDS
Total number of atoms	9779	wwPDB-VP
Average B, all atoms (Å <sup>2</sup> )	46.0	wwPDB-VP

Xtrriage's analysis on translational NCS is as follows: *The largest off-origin peak in the Patterson function is 7.19% of the height of the origin peak. No significant pseudotranslation is detected.*

<sup>1</sup>Intensities estimated from amplitudes.

<sup>2</sup>Theoretical values of  $\langle |L| \rangle$ ,  $\langle L^2 \rangle$  for acentric reflections are 0.5, 0.333 respectively for untwinned datasets, and 0.375, 0.2 for perfectly twinned datasets.

## 5 Model quality

### 5.1 Standard geometry

Bond lengths and bond angles in the following residue types are not validated in this section: PGE, PEG, 6A4

The Z score for a bond length (or angle) is the number of standard deviations the observed value is removed from the expected value. A bond length (or angle) with  $|Z| > 5$  is considered an outlier worth inspection. RMSZ is the root-mean-square of all Z scores of the bond lengths (or angles).

Mol	Chain	Bond lengths		Bond angles	
		RMSZ	# Z  >5	RMSZ	# Z  >5
1	A	0.93	0/4731	0.88	0/6380
1	B	0.94	0/4729	0.87	0/6378
All	All	0.93	0/9460	0.88	0/12758

There are no bond length outliers.

There are no bond angle outliers.

There are no chirality outliers.

There are no planarity outliers.

### 5.2 Too-close contacts

In the following table, the Non-H and H(model) columns list the number of non-hydrogen atoms and hydrogen atoms in the chain respectively. The H(added) column lists the number of hydrogen atoms added and optimized by MolProbity. The Clashes column lists the number of clashes within the asymmetric unit, whereas Symm-Clashes lists symmetry-related clashes.

Mol	Chain	Non-H	H(model)	H(added)	Clashes	Symm-Clashes
1	A	4638	0	4565	61	0
1	B	4636	0	4558	56	0
2	A	72	0	0	5	0
2	B	72	0	0	4	0
3	A	20	0	28	0	0
3	B	10	0	14	0	0
4	A	14	0	20	0	0
4	B	7	0	10	0	0
5	A	151	0	0	10	0
5	B	159	0	0	8	0
All	All	9779	0	9195	115	0



The all-atom clashscore is defined as the number of clashes found per 1000 atoms (including hydrogen atoms). The all-atom clashscore for this structure is 6.

All (115) close contacts within the same asymmetric unit are listed below, sorted by their clash magnitude.

Atom-1	Atom-2	Interatomic distance (Å)	Clash overlap (Å)
1:A:25:ILE:O	1:A:29:GLN:HG3	1.81	0.81
1:B:25:ILE:O	1:B:29:GLN:HG3	1.82	0.79
1:A:348:ARG:NH1	2:A:601:6A4:S4	2.53	0.79
1:A:78:ALA:HB3	1:B:515:THR:CG2	2.21	0.70
1:A:294:GLU:HG3	5:A:798:HOH:O	1.90	0.70
1:B:116:VAL:HB	5:B:784:HOH:O	1.94	0.67
1:A:61:ASN:OD1	1:A:64:LYS:HE3	1.96	0.64
1:B:156:PHE:CE1	1:B:285:GLU:HG2	2.35	0.62
1:A:276:LYS:HG2	5:A:721:HOH:O	1.99	0.61
1:A:78:ALA:HB3	1:B:515:THR:HG23	1.81	0.61
1:A:10:ARG:HG3	1:A:66:LEU:HD11	1.83	0.60
1:A:517:SER:OG	1:A:520:GLU:HG3	2.02	0.60
1:B:472:ARG:HD2	5:B:708:HOH:O	2.02	0.58
1:A:137:LYS:HE2	5:A:841:HOH:O	2.03	0.58
1:A:217:ALA:HB3	1:A:343:VAL:HG13	1.84	0.58
1:B:222:ARG:NH1	1:B:291:ALA:O	2.38	0.57
1:B:175:ALA:O	1:B:179:LEU:HG	2.04	0.57
1:B:10:ARG:HG3	1:B:66:LEU:HD11	1.85	0.56
1:A:155:LEU:HG	1:A:159:LYS:HE3	1.87	0.56
1:A:222[B]:ARG:HG2	1:A:222[B]:ARG:HH11	1.70	0.56
1:B:155:LEU:HG	1:B:159:LYS:HE3	1.86	0.56
1:A:175:ALA:O	1:A:179:LEU:HG	2.05	0.56
1:B:217:ALA:HB3	1:B:343:VAL:HG13	1.86	0.56
1:A:8:ALA:O	1:A:12:LYS:HE3	2.05	0.55
1:B:326:PHE:HA	1:B:329:MET:HE2	1.89	0.55
1:A:512:ASP:HB2	1:A:516:LEU:HD21	1.88	0.55
1:B:485:ARG:HB3	2:B:601:6A4:S4	2.48	0.54
1:A:395:PHE:CZ	1:A:435:SER:HA	2.43	0.53
1:B:342:SER:OG	2:B:601:6A4:S5	2.64	0.53
1:A:79:THR:HG23	1:A:83:THR:OG1	2.09	0.52
1:B:216:VAL:CG2	1:B:235:VAL:HG21	2.39	0.52
1:A:244:GLU:OE2	1:A:252:GLU:HB3	2.09	0.52
1:B:326:PHE:HA	1:B:329:MET:CE	2.40	0.52
1:B:536:LYS:HG3	1:B:583:LEU:HD23	1.91	0.52
1:A:457:LEU:HD12	2:A:603:6A4:S5	2.50	0.52
1:A:216:VAL:CG2	1:A:235:VAL:HG21	2.39	0.52
1:B:494:ASP:OD1	1:B:496:THR:HG23	2.12	0.50

*Continued on next page...*

*Continued from previous page...*

Atom-1	Atom-2	Interatomic distance (Å)	Clash overlap (Å)
1:A:551:PHE:CD2	2:A:602:6A4:O18	2.65	0.50
1:A:485:ARG:NE	2:A:601:6A4:S4	2.75	0.49
1:A:512:ASP:OD1	1:A:513:ILE:N	2.46	0.49
1:A:203:LEU:CD2	5:A:713:HOH:O	2.61	0.48
1:B:61:ASN:HD22	1:B:61:ASN:N	2.09	0.48
1:B:395:PHE:CZ	1:B:435:SER:HA	2.48	0.48
1:A:31:LEU:HD11	1:A:74:LEU:HD23	1.95	0.48
1:A:67:HIS:CE1	1:A:252:GLU:OE2	2.67	0.48
1:B:483:ASN:C	1:B:486:PRO:HD2	2.34	0.48
1:B:60:GLU:HG3	1:B:61:ASN:HD22	1.80	0.47
1:A:170:GLN:O	1:A:170:GLN:HG3	2.15	0.47
1:A:34:CYS:SG	1:A:79:THR:HG21	2.55	0.47
1:B:556:GLU:OE2	1:B:560:LYS:HD2	2.14	0.47
1:A:415:VAL:HG12	1:A:418:VAL:HG23	1.96	0.47
1:B:209:ARG:NH2	1:B:354:GLU:OE1	2.47	0.47
1:B:415:VAL:HG12	1:B:418:VAL:HG23	1.95	0.47
1:A:551:PHE:CE2	2:A:602:6A4:O18	2.67	0.46
1:A:34:CYS:HB2	1:A:39:HIS:HE1	1.81	0.46
1:A:513:ILE:O	1:A:521:ARG:HD3	2.15	0.46
1:B:31:LEU:HD11	1:B:74:LEU:HD23	1.97	0.46
1:B:60:GLU:HG3	1:B:61:ASN:ND2	2.30	0.46
1:A:502:PHE:HB2	1:A:535:HIS:CE1	2.51	0.46
1:A:47:THR:O	1:A:51:LYS:HG2	2.16	0.46
1:B:47:THR:O	1:B:51:LYS:HG2	2.16	0.46
1:A:472:ARG:HD2	5:A:789:HOH:O	2.16	0.45
1:A:242:HIS:C	5:A:713:HOH:O	2.54	0.45
1:B:216:VAL:HG23	1:B:235:VAL:HG21	1.98	0.45
1:B:7:VAL:HG12	5:B:737:HOH:O	2.15	0.45
1:B:151:ALA:HB3	1:B:152:PRO:HD3	1.99	0.45
1:A:190:LYS:NZ	5:A:711:HOH:O	2.50	0.44
1:A:209:ARG:NH2	1:A:354:GLU:OE1	2.49	0.44
1:A:60:GLU:O	1:A:61:ASN:HB2	2.18	0.44
1:A:516:LEU:CD1	1:A:524:LYS:HE3	2.48	0.44
1:B:439:LYS:HB3	5:B:824:HOH:O	2.17	0.44
1:A:216:VAL:HG23	1:A:235:VAL:HG21	1.99	0.43
1:B:237:ASP:HB3	1:B:260:LEU:HD13	1.99	0.43
1:A:34:CYS:HB2	1:A:39:HIS:CE1	2.53	0.43
1:A:243:THR:N	5:A:713:HOH:O	2.51	0.43
1:A:408:LEU:HD22	1:A:530:VAL:CG2	2.48	0.43
1:A:401:TYR:CE1	1:A:522:GLN:HG2	2.54	0.43
1:B:97:GLU:HB3	5:B:849:HOH:O	2.18	0.43

*Continued on next page...*

*Continued from previous page...*

Atom-1	Atom-2	Interatomic distance (Å)	Clash overlap (Å)
1:B:83:THR:HG21	5:B:811:HOH:O	2.19	0.43
1:B:288:HIS:NE2	1:B:292:GLU:OE1	2.52	0.43
1:B:112:LEU:HB2	5:B:836:HOH:O	2.18	0.43
1:B:502:PHE:HB2	1:B:535:HIS:CE1	2.54	0.43
1:B:244:GLU:OE2	1:B:252:GLU:HB3	2.18	0.42
1:B:52:THR:OG1	1:B:53:CYS:N	2.53	0.42
1:B:372:LYS:NZ	5:B:713:HOH:O	2.50	0.42
1:A:485:ARG:O	1:A:485:ARG:HD2	2.19	0.42
1:A:278:CYS:O	1:A:286:LYS:HG3	2.20	0.42
1:A:483:ASN:C	1:A:486:PRO:HD2	2.40	0.42
1:B:408:LEU:HD22	1:B:530:VAL:CG2	2.48	0.42
1:A:216:VAL:HG22	1:A:235:VAL:HG21	2.01	0.42
1:B:558:CYS:HB3	1:B:568:PHE:CE2	2.55	0.42
1:A:180:PRO:O	1:A:184:GLU:HG2	2.20	0.42
1:B:557:LYS:HE2	1:B:571:GLU:HG3	2.02	0.42
1:A:151:ALA:HB3	1:A:152:PRO:HD3	2.03	0.41
1:B:60:GLU:CG	1:B:61:ASN:ND2	2.82	0.41
1:B:344:VAL:HG23	1:B:481:LEU:CD2	2.51	0.41
1:B:348:ARG:NH1	2:B:601:6A4:S4	2.78	0.41
1:B:457:LEU:HD12	2:B:603:6A4:S5	2.59	0.41
1:B:278:CYS:O	1:B:286:LYS:HG3	2.20	0.41
1:A:195:LYS:HE3	1:A:195:LYS:HB2	1.91	0.41
1:A:222[B]:ARG:HG2	1:A:222[B]:ARG:NH1	2.33	0.41
1:A:389:LYS:O	1:A:393:GLU:HG3	2.20	0.41
1:B:429:ASN:O	1:B:433:VAL:HG23	2.20	0.41
1:B:485:ARG:O	1:B:485:ARG:HD2	2.19	0.41
1:A:242:HIS:HB3	5:A:713:HOH:O	2.20	0.41
1:B:216:VAL:HG22	1:B:235:VAL:HG21	2.02	0.41
1:B:485:ARG:N	1:B:486:PRO:CD	2.84	0.41
1:A:516:LEU:HD11	1:A:524:LYS:HE3	2.02	0.41
1:B:231:VAL:O	1:B:235:VAL:HG23	2.21	0.41
1:A:227:GLU:HG2	5:A:709:HOH:O	2.20	0.41
1:B:195:LYS:HE3	1:B:195:LYS:HB2	1.94	0.41
1:B:516:LEU:O	1:B:521:ARG:NH2	2.54	0.41
1:A:168:CYS:SG	1:A:181:LYS:HD2	2.61	0.40
1:A:449:ALA:O	1:A:453:LEU:HB2	2.21	0.40
1:A:231:VAL:O	1:A:235:VAL:HG23	2.22	0.40

There are no symmetry-related clashes.

## 5.3 Torsion angles [i](#)

### 5.3.1 Protein backbone [i](#)

In the following table, the Percentiles column shows the percent Ramachandran outliers of the chain as a percentile score with respect to all X-ray entries followed by that with respect to entries of similar resolution.

The Analysed column shows the number of residues for which the backbone conformation was analysed, and the total number of residues.

Mol	Chain	Analysed	Favoured	Allowed	Outliers	Percentiles	
1	A	581/585 (99%)	558 (96%)	23 (4%)	0	100	100
1	B	581/585 (99%)	550 (95%)	31 (5%)	0	100	100
All	All	1162/1170 (99%)	1108 (95%)	54 (5%)	0	100	100

There are no Ramachandran outliers to report.

### 5.3.2 Protein sidechains [i](#)

In the following table, the Percentiles column shows the percent sidechain outliers of the chain as a percentile score with respect to all X-ray entries followed by that with respect to entries of similar resolution.

The Analysed column shows the number of residues for which the sidechain conformation was analysed, and the total number of residues.

Mol	Chain	Analysed	Rotameric	Outliers	Percentiles	
1	A	510/511 (100%)	496 (97%)	14 (3%)	44	54
1	B	510/511 (100%)	486 (95%)	24 (5%)	26	29
All	All	1020/1022 (100%)	982 (96%)	38 (4%)	34	40

All (38) residues with a non-rotameric sidechain are listed below:

Mol	Chain	Res	Type
1	A	48	GLU
1	A	99	ASN
1	A	106	LYS
1	A	132	GLU
1	A	140	TYR
1	A	170	GLN
1	A	225	LYS
1	A	270	SER

*Continued on next page...*

*Continued from previous page...*

Mol	Chain	Res	Type
1	A	276	LYS
1	A	294	GLU
1	A	297	GLU
1	A	304	SER
1	A	380	LEU
1	A	439	LYS
1	B	4	LYS
1	B	5	SER
1	B	39	HIS
1	B	48	GLU
1	B	61	ASN
1	B	63	ASP
1	B	99	ASN
1	B	106	LYS
1	B	121	ASP
1	B	132	GLU
1	B	140	TYR
1	B	196	GLN
1	B	270	SER
1	B	276	LYS
1	B	283	LEU
1	B	287	SER
1	B	304	SER
1	B	313	LYS
1	B	439	LYS
1	B	460	LEU
1	B	465	GLU
1	B	496	THR
1	B	518	GLU
1	B	583	LEU

Sometimes sidechains can be flipped to improve hydrogen bonding and reduce clashes. All (3) such sidechains are listed below:

Mol	Chain	Res	Type
1	A	94	GLN
1	B	61	ASN
1	B	170	GLN

### 5.3.3 RNA

There are no RNA molecules in this entry.

## 5.4 Non-standard residues in protein, DNA, RNA chains [i](#)

There are no non-standard protein/DNA/RNA residues in this entry.

## 5.5 Carbohydrates [i](#)

There are no monosaccharides in this entry.

## 5.6 Ligand geometry [i](#)

12 ligands are modelled in this entry.

In the following table, the Counts columns list the number of bonds (or angles) for which Mogul statistics could be retrieved, the number of bonds (or angles) that are observed in the model and the number of bonds (or angles) that are defined in the Chemical Component Dictionary. The Link column lists molecule types, if any, to which the group is linked. The Z score for a bond length (or angle) is the number of standard deviations the observed value is removed from the expected value. A bond length (or angle) with  $|Z| > 2$  is considered an outlier worth inspection. RMSZ is the root-mean-square of all Z scores of the bond lengths (or angles).

Mol	Type	Chain	Res	Link	Bond lengths			Bond angles		
					Counts	RMSZ	# Z  > 2	Counts	RMSZ	# Z  > 2
3	PGE	A	606	-	9,9,9	0.61	0	8,8,8	0.84	0
4	PEG	A	605	-	6,6,6	0.72	0	5,5,5	0.73	0
3	PGE	B	604	-	9,9,9	0.48	0	8,8,8	0.39	0
2	6A4	B	601	-	22,24,24	1.06	1 (4%)	24,29,29	1.14	3 (12%)
2	6A4	A	601	-	22,24,24	1.17	1 (4%)	24,29,29	1.22	3 (12%)
2	6A4	B	602	-	22,24,24	1.01	2 (9%)	24,29,29	1.38	3 (12%)
3	PGE	A	604	-	9,9,9	0.46	0	8,8,8	0.59	0
2	6A4	B	603	-	22,24,24	1.10	2 (9%)	24,29,29	1.40	3 (12%)
4	PEG	A	607	-	6,6,6	0.62	0	5,5,5	0.39	0
2	6A4	A	603	-	22,24,24	1.25	2 (9%)	24,29,29	1.40	4 (16%)
4	PEG	B	605	-	6,6,6	0.71	0	5,5,5	0.90	0
2	6A4	A	602	-	22,24,24	1.12	2 (9%)	24,29,29	1.43	5 (20%)

In the following table, the Chirals column lists the number of chiral outliers, the number of chiral centers analysed, the number of these observed in the model and the number defined in the Chemical Component Dictionary. Similar counts are reported in the Torsion and Rings columns. '-' means no outliers of that kind were identified.

Mol	Type	Chain	Res	Link	Chirals	Torsions	Rings
3	PGE	A	606	-	-	3/7/7/7	-

*Continued on next page...*

Continued from previous page...

Mol	Type	Chain	Res	Link	Chirals	Torsions	Rings
4	PEG	A	605	-	-	1/4/4/4	-
3	PGE	B	604	-	-	4/7/7/7	-
2	6A4	B	601	-	-	9/18/29/29	0/1/1/1
2	6A4	A	601	-	-	7/18/29/29	0/1/1/1
2	6A4	B	602	-	-	11/18/29/29	0/1/1/1
3	PGE	A	604	-	-	4/7/7/7	-
2	6A4	B	603	-	-	7/18/29/29	0/1/1/1
4	PEG	A	607	-	-	3/4/4/4	-
2	6A4	A	603	-	-	11/18/29/29	0/1/1/1
4	PEG	B	605	-	-	0/4/4/4	-
2	6A4	A	602	-	-	9/18/29/29	0/1/1/1

All (10) bond length outliers are listed below:

Mol	Chain	Res	Type	Atoms	Z	Observed(Å)	Ideal(Å)
2	A	601	6A4	O3-C4	4.74	1.47	1.33
2	A	603	6A4	O3-C4	4.66	1.47	1.33
2	B	603	6A4	O3-C4	4.24	1.45	1.33
2	B	601	6A4	O3-C4	4.07	1.45	1.33
2	A	602	6A4	O3-C4	3.89	1.44	1.33
2	B	602	6A4	O3-C4	3.73	1.44	1.33
2	A	602	6A4	P1-S4	2.62	1.99	1.93
2	A	603	6A4	P1-S4	2.55	1.99	1.93
2	B	602	6A4	P1-S4	2.43	1.98	1.93
2	B	603	6A4	P1-S4	2.24	1.98	1.93

All (21) bond angle outliers are listed below:

Mol	Chain	Res	Type	Atoms	Z	Observed(°)	Ideal(°)
2	A	603	6A4	O2-P1-S5	4.14	118.12	106.42
2	B	603	6A4	O2-P1-S5	4.05	117.87	106.42
2	B	602	6A4	O3-C4-C5	3.44	122.69	111.91
2	A	601	6A4	O3-C4-C5	3.06	121.51	111.91
2	B	601	6A4	O3-C4-C5	3.02	121.37	111.91
2	A	603	6A4	O3-C4-C5	2.98	121.26	111.91
2	A	602	6A4	O3-C4-C5	2.98	121.25	111.91
2	B	603	6A4	O1-C1-C2	2.91	108.08	102.74
2	A	602	6A4	O1-P1-S5	2.79	114.09	106.61
2	B	602	6A4	O3-C4-O18	-2.56	117.12	123.59
2	B	601	6A4	O1-C1-C2	2.51	107.35	102.74

Continued on next page...

*Continued from previous page...*

Mol	Chain	Res	Type	Atoms	Z	Observed(°)	Ideal(°)
2	B	601	6A4	O3-C4-O18	-2.50	117.28	123.59
2	B	603	6A4	O3-C4-C5	2.50	119.74	111.91
2	A	601	6A4	O1-C1-C2	2.48	107.30	102.74
2	A	601	6A4	O2-P1-S5	2.45	113.36	106.42
2	A	602	6A4	C3-C1-C2	-2.44	108.02	113.34
2	A	602	6A4	O3-C4-O18	-2.39	117.55	123.59
2	A	602	6A4	C14-C13-C12	-2.36	102.42	114.42
2	A	603	6A4	C3-O3-C4	2.33	125.76	117.12
2	B	602	6A4	O1-P1-S5	2.27	112.71	106.61
2	A	603	6A4	O1-C1-C2	2.15	106.69	102.74

There are no chirality outliers.

All (69) torsion outliers are listed below:

Mol	Chain	Res	Type	Atoms
2	A	602	6A4	O1-C1-C3-O3
2	A	602	6A4	C2-C1-C3-O3
2	A	603	6A4	O1-C1-C3-O3
2	A	603	6A4	C2-C1-C3-O3
2	B	602	6A4	O1-C1-C3-O3
2	B	602	6A4	C2-C1-C3-O3
2	B	603	6A4	C2-C1-C3-O3
2	B	601	6A4	O18-C4-O3-C3
2	B	601	6A4	C5-C4-O3-C3
2	A	601	6A4	C5-C4-O3-C3
2	A	603	6A4	C12-C13-C14-C15
2	A	601	6A4	O18-C4-O3-C3
2	A	602	6A4	O18-C4-O3-C3
2	B	602	6A4	C4-C5-C6-C7
2	B	603	6A4	C4-C5-C6-C7
3	A	604	PGE	O3-C5-C6-O4
3	A	606	PGE	O3-C5-C6-O4
3	A	606	PGE	O1-C1-C2-O2
3	B	604	PGE	O3-C5-C6-O4
2	B	601	6A4	C10-C11-C12-C13
2	A	602	6A4	C5-C4-O3-C3
2	B	602	6A4	C7-C8-C9-C10
2	A	602	6A4	C5-C6-C7-C8
2	B	601	6A4	C12-C13-C14-C15
2	A	601	6A4	C9-C10-C11-C12
2	B	601	6A4	C5-C6-C7-C8
2	B	602	6A4	C6-C7-C8-C9

*Continued on next page...*



*Continued from previous page...*

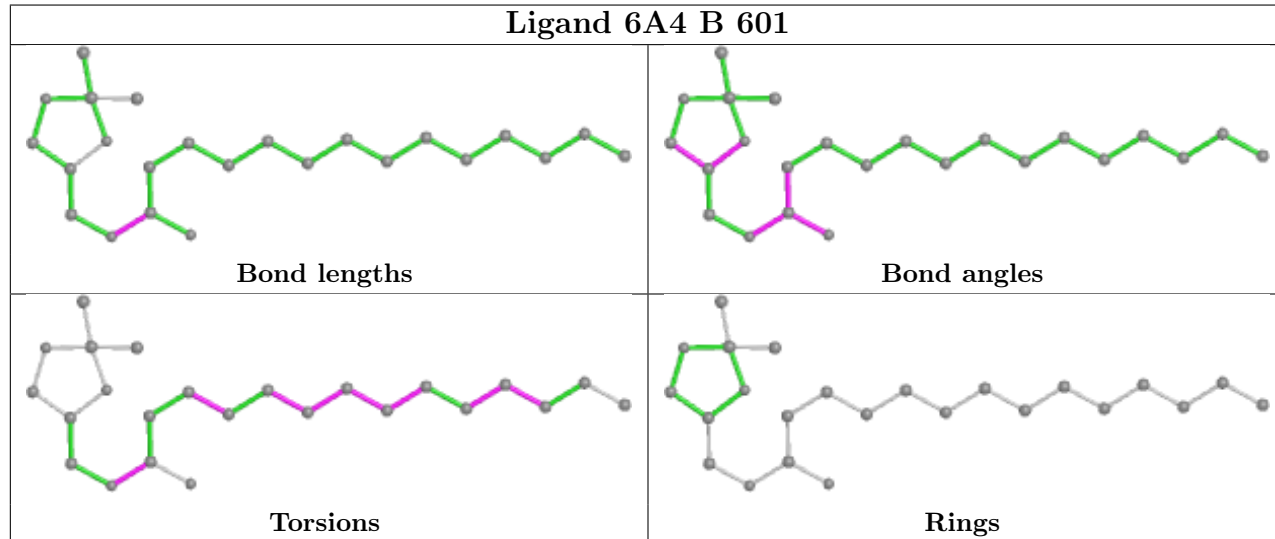
Mol	Chain	Res	Type	Atoms
2	A	601	6A4	C5-C6-C7-C8
2	A	603	6A4	C11-C10-C9-C8
3	A	604	PGE	O1-C1-C2-O2
2	B	602	6A4	C5-C6-C7-C8
3	B	604	PGE	O2-C3-C4-O3
2	B	602	6A4	C11-C10-C9-C8
4	A	607	PEG	O2-C3-C4-O4
2	B	601	6A4	C11-C10-C9-C8
2	A	603	6A4	C10-C11-C12-C13
4	A	605	PEG	O2-C3-C4-O4
2	A	602	6A4	C6-C7-C8-C9
2	A	601	6A4	C6-C7-C8-C9
2	B	603	6A4	C7-C8-C9-C10
2	A	603	6A4	C14-C15-C16-C17
2	A	603	6A4	C13-C14-C15-C16
3	A	604	PGE	O2-C3-C4-O3
2	A	603	6A4	C9-C10-C11-C12
2	B	602	6A4	C9-C10-C11-C12
2	A	602	6A4	C9-C10-C11-C12
2	B	602	6A4	O18-C4-O3-C3
3	A	604	PGE	C1-C2-O2-C3
2	A	603	6A4	O18-C4-O3-C3
2	B	603	6A4	C14-C15-C16-C17
3	A	606	PGE	C4-C3-O2-C2
2	A	601	6A4	C12-C13-C14-C15
2	B	603	6A4	C11-C10-C9-C8
2	A	603	6A4	C5-C4-O3-C3
4	A	607	PEG	O1-C1-C2-O2
2	B	603	6A4	C11-C12-C13-C14
2	A	602	6A4	C10-C11-C12-C13
4	A	607	PEG	C1-C2-O2-C3
2	B	601	6A4	C7-C8-C9-C10
3	B	604	PGE	C3-C4-O3-C5
2	A	603	6A4	C7-C8-C9-C10
2	A	602	6A4	C4-C5-C6-C7
2	B	602	6A4	C13-C14-C15-C16
3	B	604	PGE	C1-C2-O2-C3
2	B	601	6A4	C13-C14-C15-C16
2	A	601	6A4	C10-C11-C12-C13
2	B	602	6A4	C5-C4-O3-C3
2	B	603	6A4	O1-C1-C3-O3
2	B	601	6A4	C9-C10-C11-C12

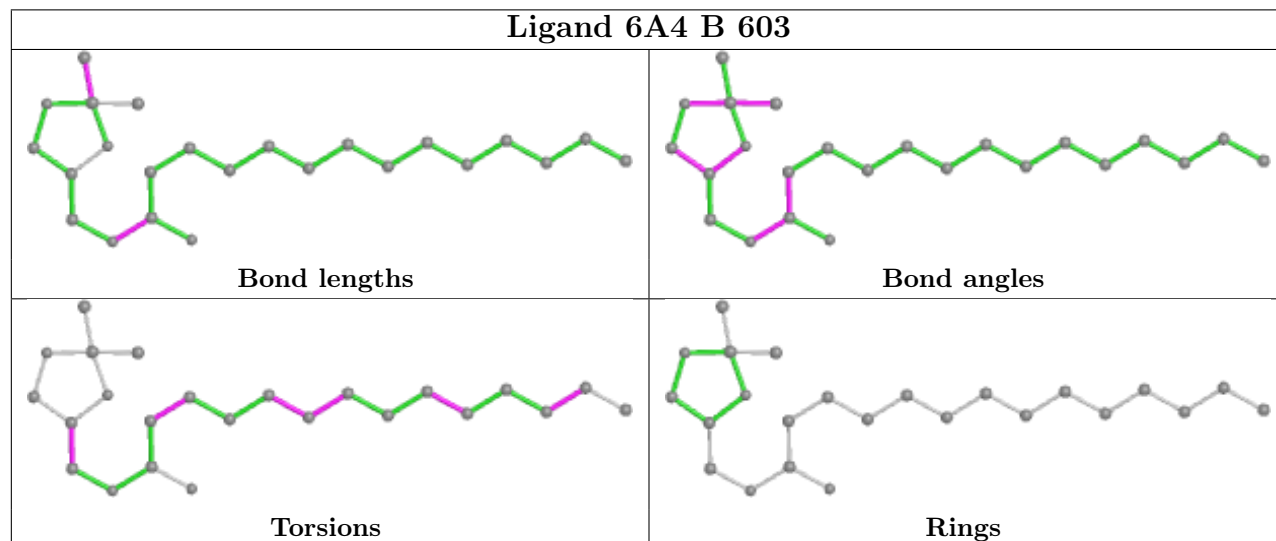
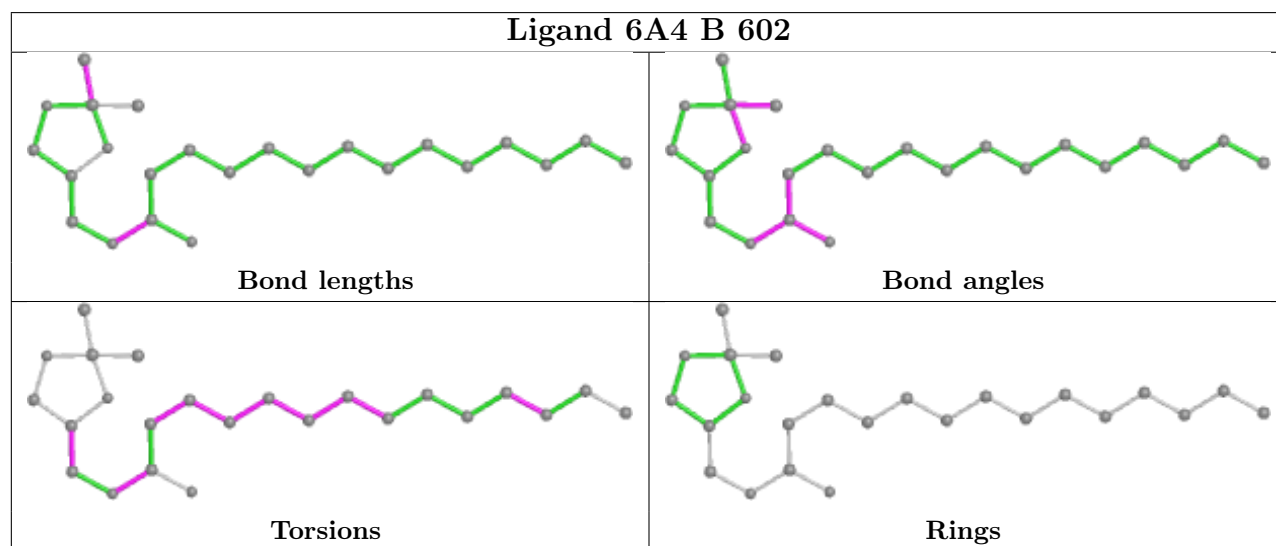
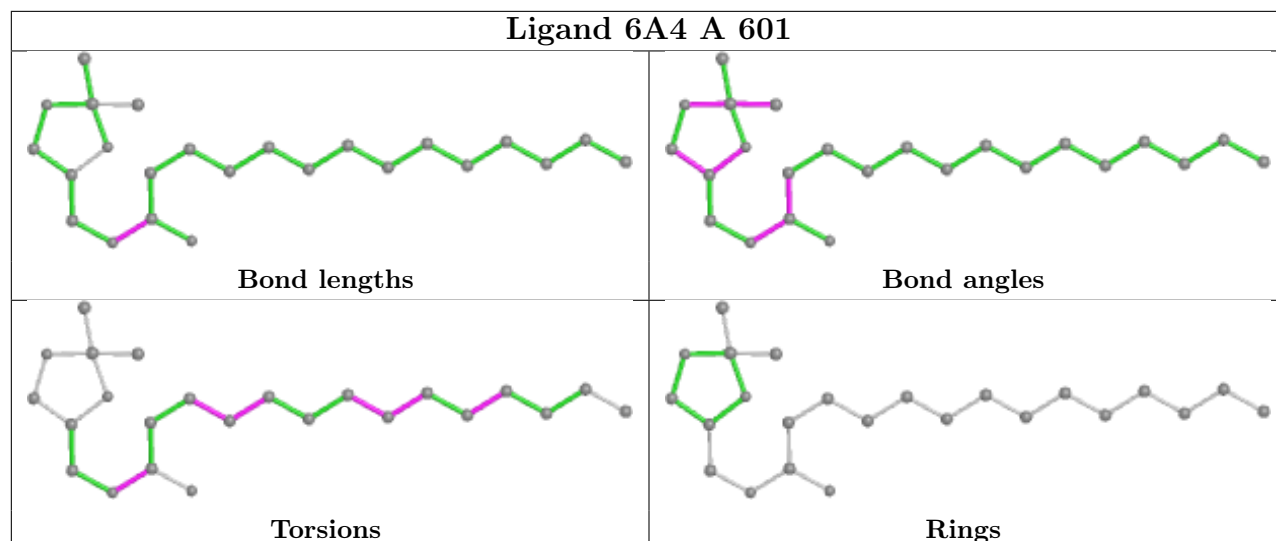
There are no ring outliers.

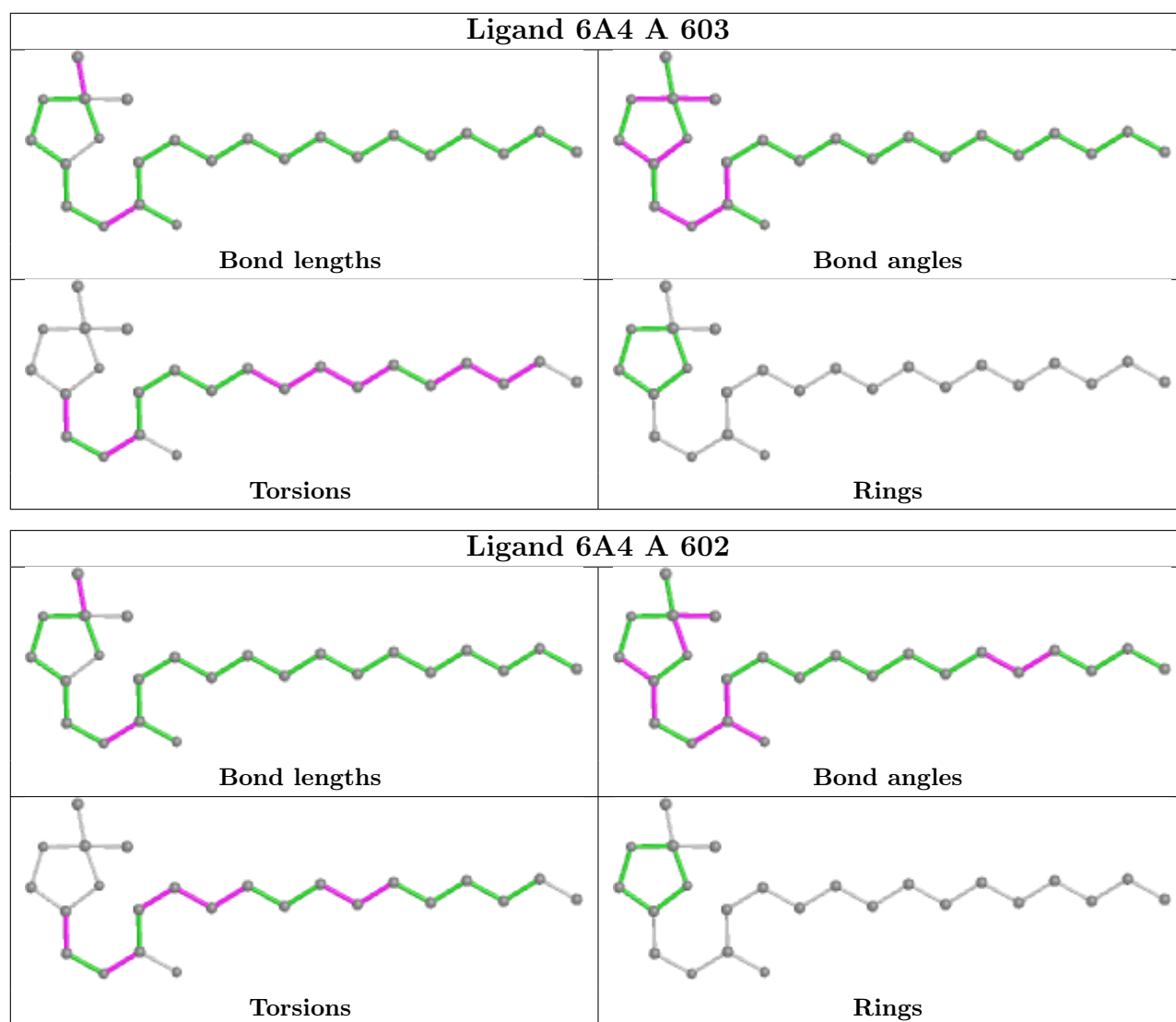
5 monomers are involved in 9 short contacts:

Mol	Chain	Res	Type	Clashes	Symm-Clashes
2	B	601	6A4	3	0
2	A	601	6A4	2	0
2	B	603	6A4	1	0
2	A	603	6A4	1	0
2	A	602	6A4	2	0

The following is a two-dimensional graphical depiction of Mogul quality analysis of bond lengths, bond angles, torsion angles, and ring geometry for all instances of the Ligand of Interest. In addition, ligands with molecular weight > 250 and outliers as shown on the validation Tables will also be included. For torsion angles, if less than 5% of the Mogul distribution of torsion angles is within 10 degrees of the torsion angle in question, then that torsion angle is considered an outlier. Any bond that is central to one or more torsion angles identified as an outlier by Mogul will be highlighted in the graph. For rings, the root-mean-square deviation (RMSD) between the ring in question and similar rings identified by Mogul is calculated over all ring torsion angles. If the average RMSD is greater than 60 degrees and the minimal RMSD between the ring in question and any Mogul-identified rings is also greater than 60 degrees, then that ring is considered an outlier. The outliers are highlighted in purple. The color gray indicates Mogul did not find sufficient equivalents in the CSD to analyse the geometry.







## 5.7 Other polymers [i](#)

There are no such residues in this entry.

## 5.8 Polymer linkage issues [i](#)

There are no chain breaks in this entry.

## 6 Fit of model and data [i](#)

### 6.1 Protein, DNA and RNA chains [i](#)

In the following table, the column labelled ‘#RSRZ> 2’ contains the number (and percentage) of RSRZ outliers, followed by percent RSRZ outliers for the chain as percentile scores relative to all X-ray entries and entries of similar resolution. The OWAB column contains the minimum, median, 95<sup>th</sup> percentile and maximum values of the occupancy-weighted average B-factor per residue. The column labelled ‘Q< 0.9’ lists the number of (and percentage) of residues with an average occupancy less than 0.9.

Mol	Chain	Analysed	<RSRZ>	#RSRZ>2	OWAB(Å <sup>2</sup> )	Q<0.9
1	A	582/585 (99%)	-0.24	1 (0%) 95   96	20, 45, 77, 95	0
1	B	582/585 (99%)	-0.26	1 (0%) 95   96	22, 44, 69, 102	0
All	All	1164/1170 (99%)	-0.25	2 (0%) 95   96	20, 44, 73, 102	0

All (2) RSRZ outliers are listed below:

Mol	Chain	Res	Type	RSRZ
1	A	206	PHE	2.2
1	B	58	SER	2.2

### 6.2 Non-standard residues in protein, DNA, RNA chains [i](#)

There are no non-standard protein/DNA/RNA residues in this entry.

### 6.3 Carbohydrates [i](#)

There are no monosaccharides in this entry.

### 6.4 Ligands [i](#)

In the following table, the Atoms column lists the number of modelled atoms in the group and the number defined in the chemical component dictionary. The B-factors column lists the minimum, median, 95<sup>th</sup> percentile and maximum values of B factors of atoms in the group. The column labelled ‘Q< 0.9’ lists the number of atoms with occupancy less than 0.9.

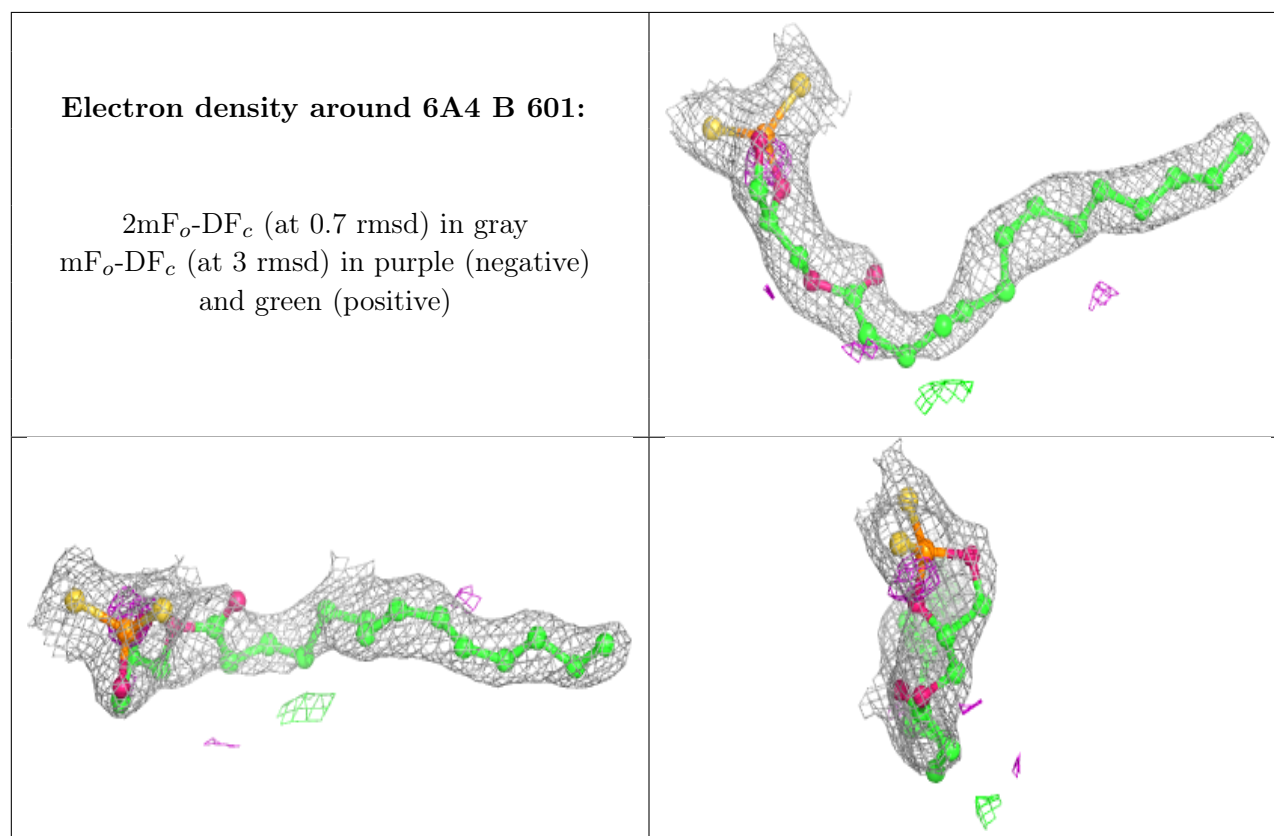
Mol	Type	Chain	Res	Atoms	RSCC	RSR	B-factors(Å <sup>2</sup> )	Q<0.9
3	PGE	A	606	10/10	0.89	0.22	36,40,42,43	0
4	PEG	A	607	7/7	0.89	0.33	46,51,55,58	0
4	PEG	A	605	7/7	0.90	0.16	41,46,51,52	0

*Continued on next page...*

Continued from previous page...

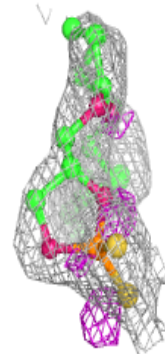
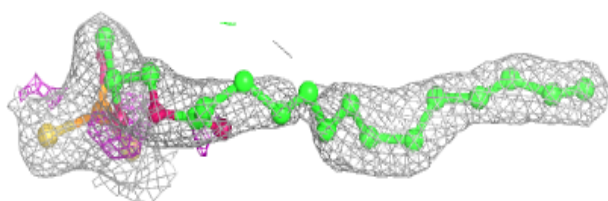
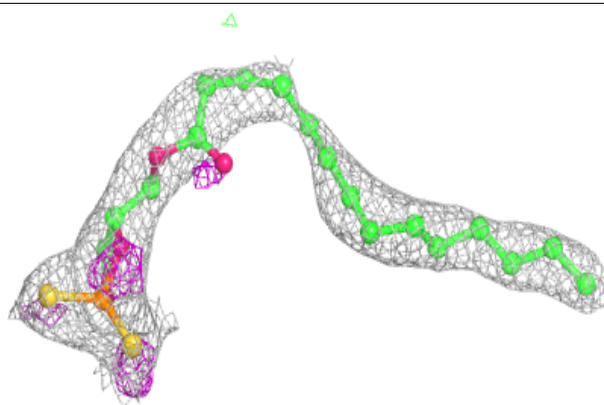
Mol	Type	Chain	Res	Atoms	RSCC	RSR	B-factors( $\text{\AA}^2$ )	Q<0.9
2	6A4	B	601	24/24	0.90	0.21	33,53,74,80	0
2	6A4	A	601	24/24	0.91	0.22	33,52,60,68	0
3	PGE	B	604	10/10	0.91	0.14	56,57,64,65	0
2	6A4	B	602	24/24	0.92	0.20	29,39,56,69	0
2	6A4	A	603	24/24	0.93	0.16	34,52,59,60	0
3	PGE	A	604	10/10	0.93	0.13	42,45,48,55	0
2	6A4	A	602	24/24	0.93	0.15	26,33,54,59	0
4	PEG	B	605	7/7	0.93	0.13	30,31,36,38	0
2	6A4	B	603	24/24	0.94	0.19	42,70,80,83	0

The following is a graphical depiction of the model fit to experimental electron density of all instances of the Ligand of Interest. In addition, ligands with molecular weight > 250 and outliers as shown on the geometry validation Tables will also be included. Each fit is shown from different orientation to approximate a three-dimensional view.

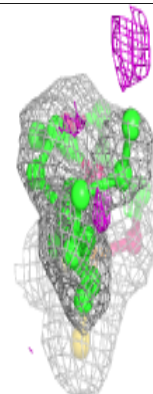
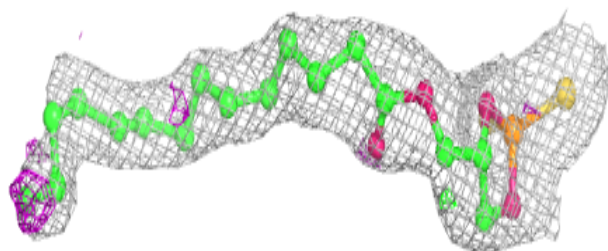
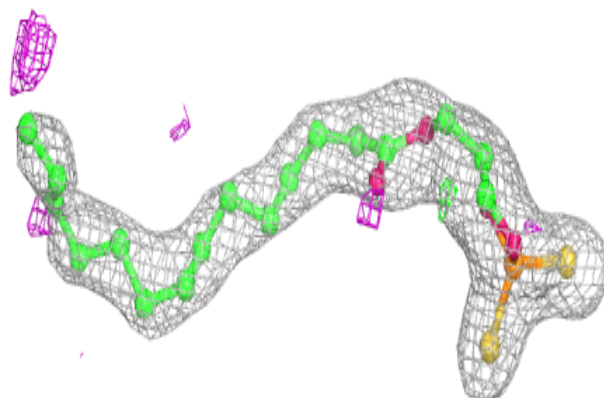


**Electron density around 6A4 A 601:**

$2mF_o-DF_c$  (at 0.7 rmsd) in gray  
 $mF_o-DF_c$  (at 3 rmsd) in purple (negative)  
and green (positive)

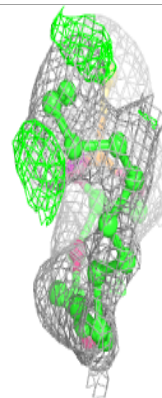
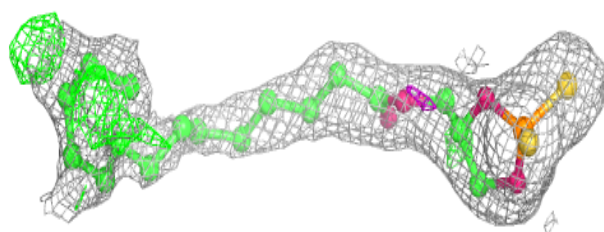
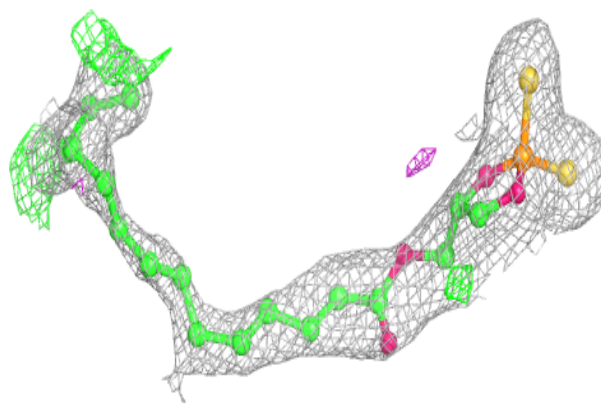
**Electron density around 6A4 B 602:**

$2mF_o-DF_c$  (at 0.7 rmsd) in gray  
 $mF_o-DF_c$  (at 3 rmsd) in purple (negative)  
and green (positive)

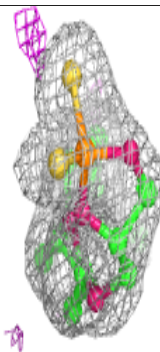
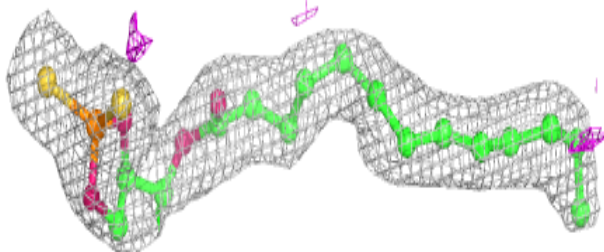
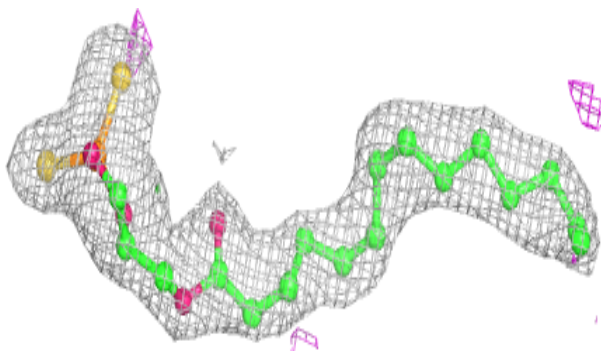


**Electron density around 6A4 A 603:**

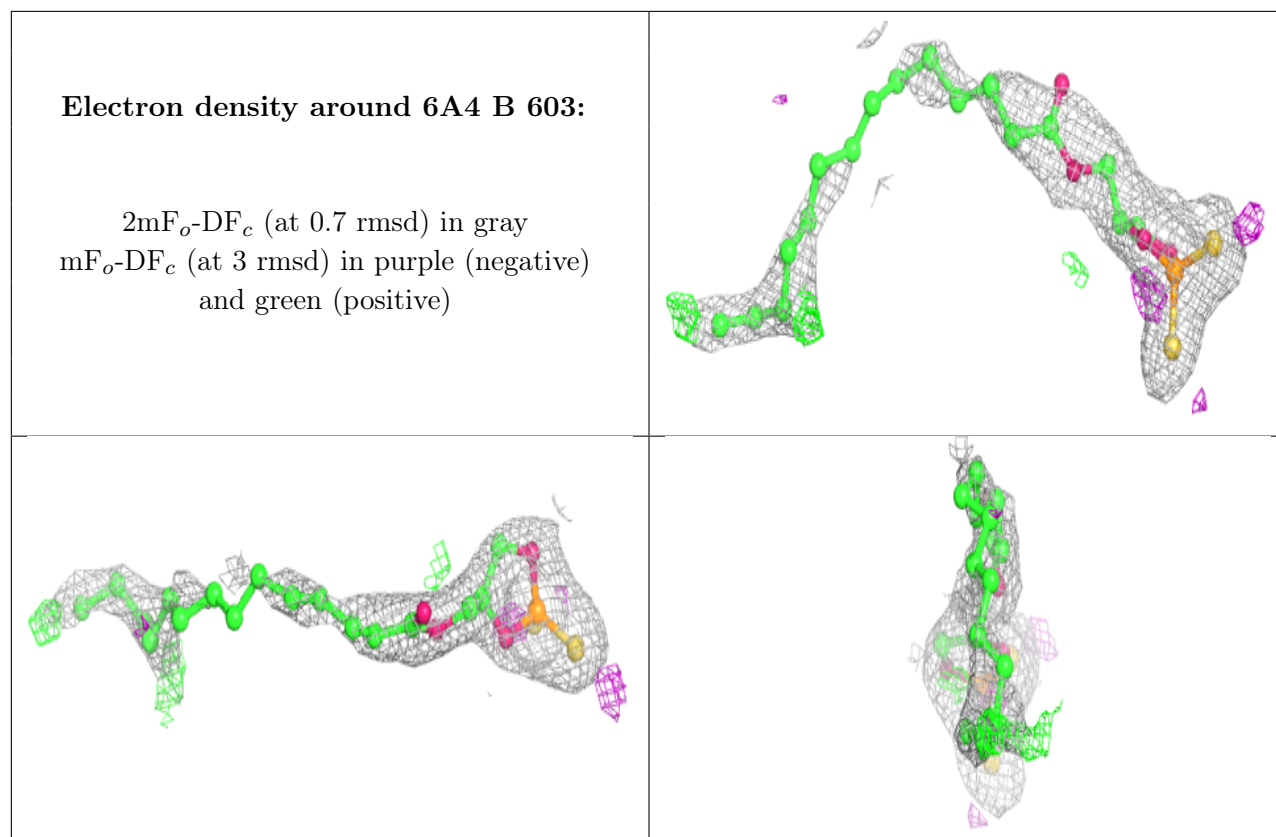
$2mF_o-DF_c$  (at 0.7 rmsd) in gray  
 $mF_o-DF_c$  (at 3 rmsd) in purple (negative)  
and green (positive)

**Electron density around 6A4 A 602:**

$2mF_o-DF_c$  (at 0.7 rmsd) in gray  
 $mF_o-DF_c$  (at 3 rmsd) in purple (negative)  
and green (positive)







## 6.5 Other polymers [i](#)

There are no such residues in this entry.