



# Full wwPDB X-ray Structure Validation Report ⓘ

Feb 25, 2024 – 01:52 PM EST

PDB ID : 5HEX  
Title : Crystal Structure of Human Hexokinase 2 with cmpd 30, a 2-amino-6-benzenesulfonamide glucosamine  
Authors : Campobasso, N.; Zhao, B.; Smallwood, A.  
Deposited on : 2016-01-06  
Resolution : 2.73 Å(reported)

This is a Full wwPDB X-ray Structure Validation Report for a publicly released PDB entry.

We welcome your comments at [validation@mail.wwpdb.org](mailto:validation@mail.wwpdb.org)

A user guide is available at

<https://www.wwpdb.org/validation/2017/XrayValidationReportHelp>

with specific help available everywhere you see the ⓘ symbol.

The types of validation reports are described at

<http://www.wwpdb.org/validation/2017/FAQs#types>.

---

The following versions of software and data (see [references ⓘ](#)) were used in the production of this report:

MolProbity : 4.02b-467  
Mogul : 1.8.5 (274361), CSD as541be (2020)  
Xtriage (Phenix) : 1.13  
EDS : 2.36  
buster-report : 1.1.7 (2018)  
Percentile statistics : 20191225.v01 (using entries in the PDB archive December 25th 2019)  
Refmac : 5.8.0158  
CCP4 : 7.0.044 (Gargrove)  
Ideal geometry (proteins) : Engh & Huber (2001)  
Ideal geometry (DNA, RNA) : Parkinson et al. (1996)  
Validation Pipeline (wwPDB-VP) : 2.36

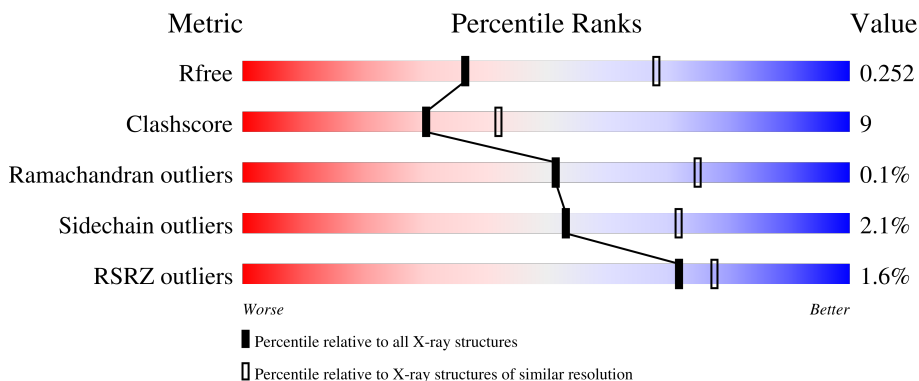
# 1 Overall quality at a glance

The following experimental techniques were used to determine the structure:

*X-RAY DIFFRACTION*

The reported resolution of this entry is 2.73 Å.

Percentile scores (ranging between 0-100) for global validation metrics of the entry are shown in the following graphic. The table shows the number of entries on which the scores are based.



Metric	Whole archive (#Entries)	Similar resolution (#Entries, resolution range(Å))
$R_{free}$	130704	1271 (2.76-2.72)
Clashscore	141614	1322 (2.76-2.72)
Ramachandran outliers	138981	1297 (2.76-2.72)
Sidechain outliers	138945	1298 (2.76-2.72)
RSRZ outliers	127900	1243 (2.76-2.72)

The table below summarises the geometric issues observed across the polymeric chains and their fit to the electron density. The red, orange, yellow and green segments of the lower bar indicate the fraction of residues that contain outliers for  $\geq 3$ , 2, 1 and 0 types of geometric quality criteria respectively. A grey segment represents the fraction of residues that are not modelled. The numeric value for each fraction is indicated below the corresponding segment, with a dot representing fractions  $\leq 5\%$ . The upper red bar (where present) indicates the fraction of residues that have poor fit to the electron density. The numeric value is given above the bar.

Mol	Chain	Length	Quality of chain
1	A	923	
1	B	923	

## 2 Entry composition [i](#)

There are 3 unique types of molecules in this entry. The entry contains 13830 atoms, of which 0 are hydrogens and 0 are deuteriums.

In the tables below, the ZeroOcc column contains the number of atoms modelled with zero occupancy, the AltConf column contains the number of residues with at least one atom in alternate conformation and the Trace column contains the number of residues modelled with at most 2 atoms.

- Molecule 1 is a protein called Hexokinase-2.

Mol	Chain	Residues	Atoms					ZeroOcc	AltConf	Trace
			Total	C	N	O	S			
1	A	880	6771	4245	1191	1274	61	0	1	0
1	B	891	6847	4293	1195	1297	62	0	0	0

There are 44 discrepancies between the modelled and reference sequences:

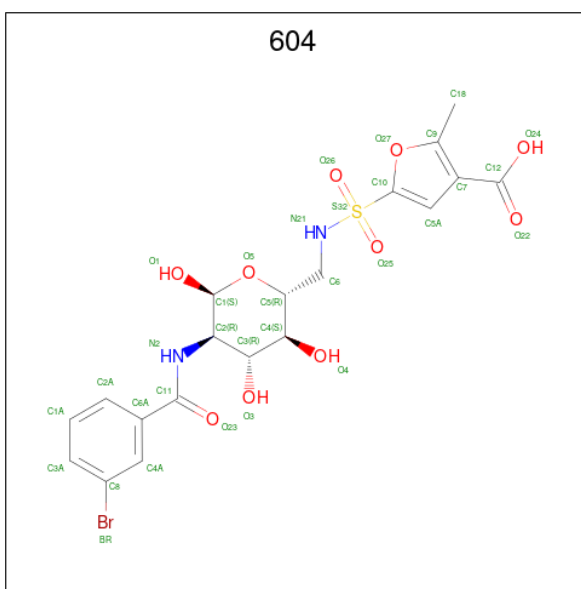
Chain	Residue	Modelled	Actual	Comment	Reference
A	-5	MET	-	initiating methionine	UNP P52789
A	-4	GLY	-	expression tag	UNP P52789
A	-3	SER	-	expression tag	UNP P52789
A	-2	SER	-	expression tag	UNP P52789
A	-1	HIS	-	expression tag	UNP P52789
A	0	HIS	-	expression tag	UNP P52789
A	1	HIS	-	expression tag	UNP P52789
A	2	HIS	-	expression tag	UNP P52789
A	3	HIS	-	expression tag	UNP P52789
A	4	HIS	-	expression tag	UNP P52789
A	5	SER	-	expression tag	UNP P52789
A	6	SER	-	expression tag	UNP P52789
A	7	GLY	-	expression tag	UNP P52789
A	8	LEU	-	expression tag	UNP P52789
A	9	GLU	-	expression tag	UNP P52789
A	10	ASN	-	expression tag	UNP P52789
A	11	LEU	-	expression tag	UNP P52789
A	12	TYR	-	expression tag	UNP P52789
A	13	PHE	-	expression tag	UNP P52789
A	14	GLN	-	expression tag	UNP P52789
A	15	GLY	-	expression tag	UNP P52789
A	16	SER	-	expression tag	UNP P52789
B	-5	MET	-	initiating methionine	UNP P52789
B	-4	GLY	-	expression tag	UNP P52789
B	-3	SER	-	expression tag	UNP P52789

*Continued on next page...*

Continued from previous page...

Chain	Residue	Modelled	Actual	Comment	Reference
B	-2	SER	-	expression tag	UNP P52789
B	-1	HIS	-	expression tag	UNP P52789
B	0	HIS	-	expression tag	UNP P52789
B	1	HIS	-	expression tag	UNP P52789
B	2	HIS	-	expression tag	UNP P52789
B	3	HIS	-	expression tag	UNP P52789
B	4	HIS	-	expression tag	UNP P52789
B	5	SER	-	expression tag	UNP P52789
B	6	SER	-	expression tag	UNP P52789
B	7	GLY	-	expression tag	UNP P52789
B	8	LEU	-	expression tag	UNP P52789
B	9	GLU	-	expression tag	UNP P52789
B	10	ASN	-	expression tag	UNP P52789
B	11	LEU	-	expression tag	UNP P52789
B	12	TYR	-	expression tag	UNP P52789
B	13	PHE	-	expression tag	UNP P52789
B	14	GLN	-	expression tag	UNP P52789
B	15	GLY	-	expression tag	UNP P52789
B	16	SER	-	expression tag	UNP P52789

- Molecule 2 is 2-[(3-bromobenzene-1-carbonyl)amino]-6-[[4-carboxy-5-methylfuran-2-yl)sulfonyl]amino}-2,6-dideoxy- $\alpha$ -D-glucopyranos e (three-letter code: 604) (formula:  $C_{19}H_{21}BrN_2O_{10}S$ ).



Mol	Chain	Residues	Atoms					ZeroOcc	AltConf	
			Total	Br	C	N	O			S
2	A	1	33	1	19	2	10	1	0	0

Continued on next page...

*Continued from previous page...*

Mol	Chain	Residues	Atoms						ZeroOcc	AltConf
2	A	1	Total	Br	C	N	O	S	0	0
			33	1	19	2	10	1		
2	B	1	Total	Br	C	N	O	S	0	0
			30	1	16	2	10	1		
2	B	1	Total	Br	C	N	O	S	0	0
			33	1	19	2	10	1		

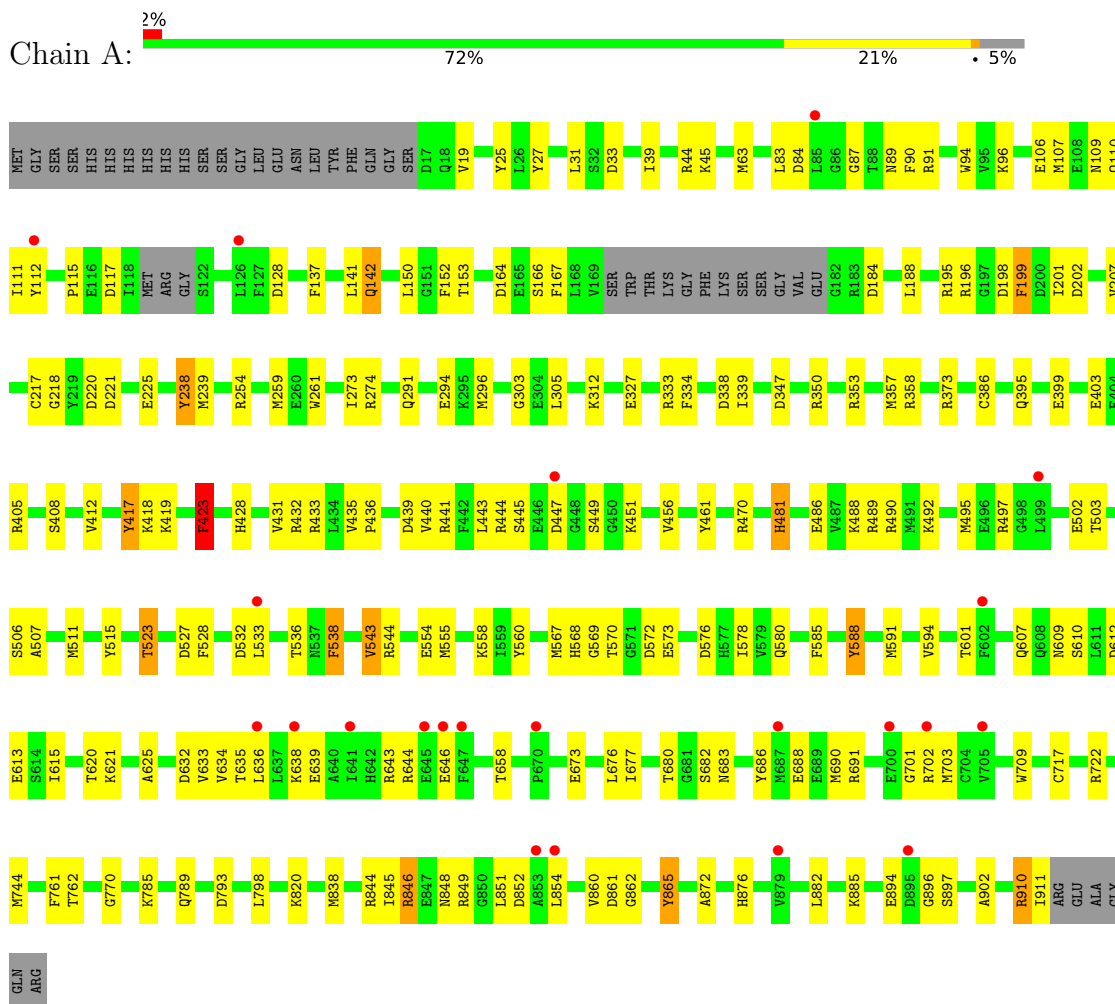
- Molecule 3 is water.

Mol	Chain	Residues	Atoms		ZeroOcc	AltConf
3	A	31	Total	O	0	0
			31	31		
3	B	52	Total	O	0	0
			52	52		

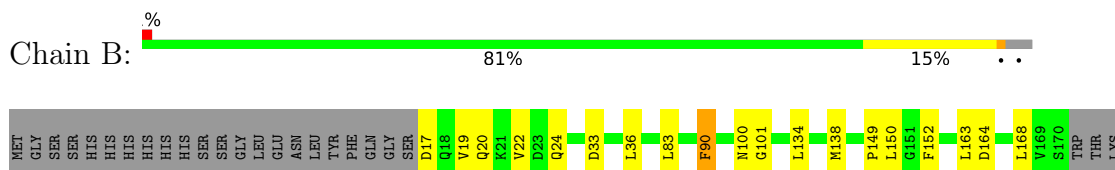
### 3 Residue-property plots

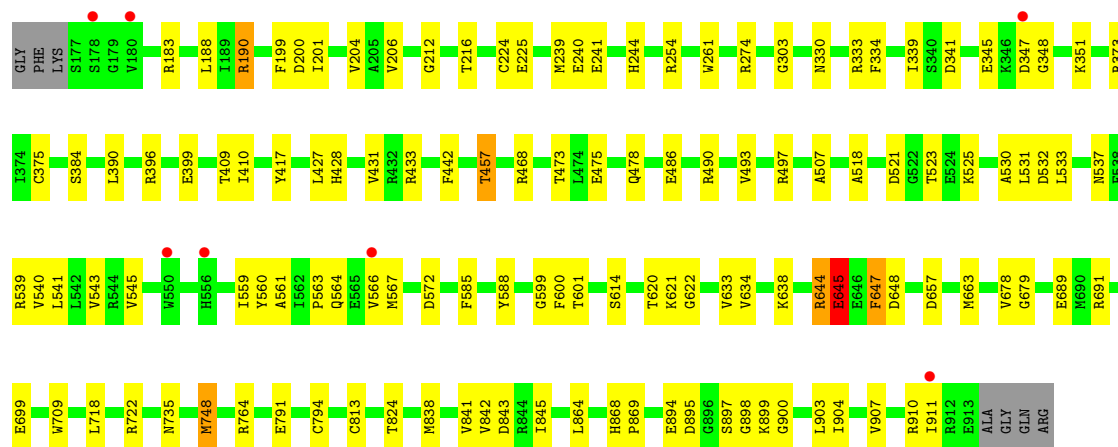
These plots are drawn for all protein, RNA, DNA and oligosaccharide chains in the entry. The first graphic for a chain summarises the proportions of the various outlier classes displayed in the second graphic. The second graphic shows the sequence view annotated by issues in geometry and electron density. Residues are color-coded according to the number of geometric quality criteria for which they contain at least one outlier: green = 0, yellow = 1, orange = 2 and red = 3 or more. A red dot above a residue indicates a poor fit to the electron density ( $RSRZ > 2$ ). Stretches of 2 or more consecutive residues without any outlier are shown as a green connector. Residues present in the sample, but not in the model, are shown in grey.

- Molecule 1: Hexokinase-2



- Molecule 1: Hexokinase-2





## 4 Data and refinement statistics

Property	Value	Source
Space group	P 1 21 1	Depositor
Cell constants a, b, c, $\alpha$ , $\beta$ , $\gamma$	66.03Å 154.89Å 114.83Å 90.00° 96.34° 90.00°	Depositor
Resolution (Å)	114.12 – 2.73 114.12 – 2.73	Depositor EDS
% Data completeness (in resolution range)	98.8 (114.12-2.73) 93.8 (114.12-2.73)	Depositor EDS
$R_{merge}$	0.10	Depositor
$R_{sym}$	(Not available)	Depositor
$\langle I/\sigma(I) \rangle$ <sup>1</sup>	1.88 (at 2.73Å)	Xtrriage
Refinement program	PHENIX (1.10_2155: ???)	Depositor
R, $R_{free}$	0.190 , 0.252 0.190 , 0.252	Depositor DCC
$R_{free}$ test set	2919 reflections (4.87%)	wwPDB-VP
Wilson B-factor (Å <sup>2</sup> )	36.4	Xtrriage
Anisotropy	0.502	Xtrriage
Bulk solvent $k_{sol}$ (e/Å <sup>3</sup> ), $B_{sol}$ (Å <sup>2</sup> )	0.32 , 41.8	EDS
L-test for twinning <sup>2</sup>	$\langle  L  \rangle = 0.48$ , $\langle L^2 \rangle = 0.31$	Xtrriage
Estimated twinning fraction	No twinning to report.	Xtrriage
$F_o, F_c$ correlation	0.92	EDS
Total number of atoms	13830	wwPDB-VP
Average B, all atoms (Å <sup>2</sup> )	44.0	wwPDB-VP

Xtrriage's analysis on translational NCS is as follows: *The largest off-origin peak in the Patterson function is 3.04% of the height of the origin peak. No significant pseudotranslation is detected.*

<sup>1</sup>Intensities estimated from amplitudes.

<sup>2</sup>Theoretical values of  $\langle |L| \rangle$ ,  $\langle L^2 \rangle$  for acentric reflections are 0.5, 0.333 respectively for untwinned datasets, and 0.375, 0.2 for perfectly twinned datasets.



## 5 Model quality [i](#)

### 5.1 Standard geometry [i](#)

Bond lengths and bond angles in the following residue types are not validated in this section: 604

The Z score for a bond length (or angle) is the number of standard deviations the observed value is removed from the expected value. A bond length (or angle) with  $|Z| > 5$  is considered an outlier worth inspection. RMSZ is the root-mean-square of all Z scores of the bond lengths (or angles).

Mol	Chain	Bond lengths		Bond angles	
		RMSZ	# $ Z  > 5$	RMSZ	# $ Z  > 5$
1	A	0.47	3/6878 (0.0%)	0.73	8/9262 (0.1%)
1	B	0.47	0/6952	0.67	2/9365 (0.0%)
All	All	0.47	3/13830 (0.0%)	0.70	10/18627 (0.1%)

Chiral center outliers are detected by calculating the chiral volume of a chiral center and verifying if the center is modelled as a planar moiety or with the opposite hand. A planarity outlier is detected by checking planarity of atoms in a peptide group, atoms in a mainchain group or atoms of a sidechain that are expected to be planar.

Mol	Chain	#Chirality outliers	#Planarity outliers
1	A	0	2
1	B	0	4
All	All	0	6

All (3) bond length outliers are listed below:

Mol	Chain	Res	Type	Atoms	Z	Observed(Å)	Ideal(Å)
1	A	386	CYS	CB-SG	-7.50	1.69	1.82
1	A	691	ARG	CZ-NH1	-5.14	1.26	1.33
1	A	691	ARG	NE-CZ	-5.11	1.26	1.33

All (10) bond angle outliers are listed below:

Mol	Chain	Res	Type	Atoms	Z	Observed(°)	Ideal(°)
1	A	846	ARG	NE-CZ-NH1	-7.62	116.49	120.30
1	A	846	ARG	NE-CZ-NH2	7.18	123.89	120.30
1	A	423	PHE	CB-CG-CD1	6.81	125.57	120.80
1	B	645	GLU	N-CA-C	6.28	127.97	111.00
1	A	305	LEU	CA-CB-CG	5.93	128.93	115.30
1	A	107	MET	CB-CG-SD	-5.81	94.98	112.40

*Continued on next page...*

Continued from previous page...

Mol	Chain	Res	Type	Atoms	Z	Observed(°)	Ideal(°)
1	A	142	GLN	CA-CB-CG	5.81	126.17	113.40
1	A	543	VAL	CG1-CB-CG2	5.61	119.87	110.90
1	A	423	PHE	CB-CG-CD2	-5.36	117.05	120.80
1	B	190	ARG	NE-CZ-NH2	-5.18	117.71	120.30

There are no chirality outliers.

All (6) planarity outliers are listed below:

Mol	Chain	Res	Type	Group
1	A	523	THR	Peptide
1	A	646	GLU	Peptide
1	B	622	GLY	Peptide
1	B	644	ARG	Peptide
1	B	645	GLU	Peptide
1	B	647	PHE	Peptide

## 5.2 Too-close contacts [i](#)

In the following table, the Non-H and H(model) columns list the number of non-hydrogen atoms and hydrogen atoms in the chain respectively. The H(added) column lists the number of hydrogen atoms added and optimized by MolProbity. The Clashes column lists the number of clashes within the asymmetric unit, whereas Symm-Clashes lists symmetry-related clashes.

Mol	Chain	Non-H	H(model)	H(added)	Clashes	Symm-Clashes
1	A	6771	0	6696	157	0
1	B	6847	0	6763	98	0
2	A	66	0	0	2	0
2	B	63	0	0	2	0
3	A	31	0	0	4	0
3	B	52	0	0	1	0
All	All	13830	0	13459	253	0

The all-atom clashscore is defined as the number of clashes found per 1000 atoms (including hydrogen atoms). The all-atom clashscore for this structure is 9.

All (253) close contacts within the same asymmetric unit are listed below, sorted by their clash magnitude.

Atom-1	Atom-2	Interatomic distance (Å)	Clash overlap (Å)
1:A:865:TYR:HH	1:A:876:HIS:HE2	1.01	0.96

Continued on next page...

*Continued from previous page...*

Atom-1	Atom-2	Interatomic distance (Å)	Clash overlap (Å)
1:A:153:THR:HG21	1:A:449:SER:HB2	1.49	0.95
1:B:663:MET:HG3	1:B:904:ILE:HG12	1.54	0.89
1:B:240:GLU:CD	1:B:396:ARG:HH12	1.77	0.86
1:B:239:MET:HG3	1:B:254:ARG:HH21	1.37	0.86
1:A:793:ASP:O	1:A:820:LYS:NZ	2.09	0.85
1:B:634:VAL:HG12	1:B:638:LYS:HE2	1.56	0.84
1:B:239:MET:CB	1:B:254:ARG:NH2	2.39	0.84
1:B:274:ARG:NH1	3:B:1101:HOH:O	2.11	0.83
1:B:601:THR:HG21	1:B:897:SER:HA	1.62	0.81
1:B:239:MET:CG	1:B:254:ARG:HH21	1.94	0.80
1:A:538:PHE:CE1	1:A:560:TYR:HB2	2.18	0.79
1:B:239:MET:HG3	1:B:254:ARG:NH2	1.99	0.77
1:B:240:GLU:OE1	1:B:396:ARG:NH1	2.17	0.77
1:A:896:GLY:HA2	1:A:897:SER:HB2	1.67	0.77
1:A:502:GLU:OE1	1:A:503:THR:HG23	1.88	0.73
1:B:645:GLU:OE1	1:B:647:PHE:HB3	1.87	0.73
1:B:239:MET:CB	1:B:254:ARG:HH21	2.01	0.73
1:A:405:ARG:NH1	1:A:436:PRO:O	2.20	0.73
1:A:405:ARG:NH2	1:A:439:ASP:OD1	2.22	0.72
1:A:141:LEU:O	1:A:142:GLN:HB3	1.88	0.72
1:A:490:ARG:NH1	1:A:717:CYS:O	2.23	0.71
1:A:538:PHE:HE2	1:A:578:ILE:HG12	1.54	0.71
1:A:580:GLN:HB2	1:A:644:ARG:HH21	1.54	0.71
1:A:580:GLN:HB2	1:A:644:ARG:NH2	2.06	0.70
1:A:523:THR:HG21	1:A:910:ARG:NH2	2.09	0.68
1:A:538:PHE:HE1	1:A:560:TYR:HB2	1.55	0.68
1:A:497:ARG:HG2	1:A:507:ALA:HB2	1.75	0.67
1:A:523:THR:HG21	1:A:910:ARG:HH22	1.59	0.67
1:A:688:GLU:OE2	1:A:848:ASN:ND2	2.28	0.66
1:A:84:ASP:OD1	1:A:91:ARG:HB2	1.95	0.66
1:B:539:ARG:HG2	1:B:559:ILE:HG12	1.78	0.66
1:A:196:ARG:NH2	1:A:198:ASP:OD2	2.28	0.65
1:A:785:LYS:O	1:A:789:GLN:HG3	1.96	0.65
1:A:635:THR:O	1:A:639:GLU:HG3	1.97	0.65
1:A:844:ARG:NH1	1:A:848:ASN:OD1	2.30	0.65
1:B:497:ARG:HG2	1:B:507:ALA:HB2	1.79	0.64
1:A:515:TYR:HA	1:A:703:MET:HE2	1.79	0.64
1:B:691:ARG:HB3	1:B:699:GLU:HB3	1.80	0.64
1:A:523:THR:CG2	1:A:910:ARG:HH22	2.11	0.64
1:A:533:LEU:HD12	1:A:538:PHE:HD2	1.62	0.64
1:A:27:TYR:OH	1:B:399:GLU:OE2	2.08	0.63

*Continued on next page...*

*Continued from previous page...*

Atom-1	Atom-2	Interatomic distance (Å)	Clash overlap (Å)
1:B:339:ILE:HG23	1:B:375:CYS:HB3	1.81	0.63
1:A:673:GLU:OE1	1:A:702:ARG:NH1	2.32	0.63
1:B:239:MET:CG	1:B:254:ARG:NH2	2.58	0.63
1:A:673:GLU:OE2	1:A:849:ARG:NH2	2.33	0.62
1:B:239:MET:HB3	1:B:254:ARG:NH2	2.15	0.62
1:B:894:GLU:OE2	1:B:894:GLU:N	2.33	0.62
1:B:521:ASP:OD1	1:B:523:THR:HG22	1.99	0.62
1:A:523:THR:CB	1:A:910:ARG:HH22	2.13	0.61
1:A:291:GLN:NE2	1:A:294:GLU:OE1	2.32	0.60
1:A:207:VAL:HG11	1:A:456:VAL:HG21	1.83	0.60
1:A:538:PHE:CE2	1:A:578:ILE:HG12	2.35	0.60
1:B:341:ASP:HB3	1:B:351:LYS:HE2	1.84	0.60
1:A:495:MET:HG2	1:A:511:MET:HE3	1.84	0.59
1:A:633:VAL:HA	1:A:636:LEU:HD12	1.84	0.59
1:A:862:GLY:HA2	2:A:1002:604:O22	2.02	0.59
1:B:239:MET:HB2	1:B:254:ARG:NH2	2.16	0.59
1:A:83:LEU:HG	1:A:150:LEU:HD11	1.85	0.59
1:A:199:PHE:HD1	1:A:199:PHE:H	1.50	0.58
1:B:564:GLN:HA	1:B:567:MET:HB2	1.83	0.58
1:A:543:VAL:HG21	1:A:902:ALA:HB3	1.86	0.58
1:B:645:GLU:OE1	1:B:647:PHE:N	2.36	0.58
1:A:543:VAL:HG22	1:A:555:MET:SD	2.44	0.57
1:A:896:GLY:HA2	1:A:897:SER:CB	2.32	0.57
1:B:663:MET:HE1	1:B:907:VAL:HG21	1.86	0.57
1:A:569:GLY:O	1:A:625:ALA:HA	2.04	0.57
1:A:25:TYR:OH	1:A:312:LYS:NZ	2.33	0.57
1:A:423:PHE:CD1	1:A:423:PHE:C	2.78	0.57
1:B:240:GLU:OE2	1:B:396:ARG:NH1	2.31	0.57
1:A:488:LYS:NZ	1:A:882:LEU:O	2.36	0.57
1:A:90:PHE:CZ	1:A:112:TYR:HB2	2.40	0.56
1:A:533:LEU:HD12	1:A:538:PHE:CD2	2.41	0.56
1:A:528:PHE:HB2	1:A:902:ALA:HB1	1.88	0.56
1:B:431:VAL:HG11	1:B:442:PHE:HZ	1.71	0.56
1:B:83:LEU:HG	1:B:150:LEU:HD11	1.87	0.55
1:B:486:GLU:O	1:B:490:ARG:HG3	2.07	0.55
1:A:470:ARG:HB2	1:A:761:PHE:CZ	2.41	0.55
1:B:240:GLU:CD	1:B:396:ARG:NH1	2.52	0.55
1:B:225:GLU:HG2	1:B:254:ARG:HH22	1.72	0.55
1:A:910:ARG:CG	1:A:911:ILE:HD12	2.36	0.55
1:A:418:LYS:C	1:A:419:LYS:HD3	2.27	0.55
1:A:570:THR:HG23	1:A:573:GLU:H	1.71	0.54

*Continued on next page...*

*Continued from previous page...*

Atom-1	Atom-2	Interatomic distance (Å)	Clash overlap (Å)
1:B:212:GLY:O	1:B:216:THR:HG22	2.07	0.54
1:B:345:GLU:HB2	1:B:348:GLY:HA2	1.89	0.54
1:A:634:VAL:HG23	1:A:638:LYS:HE2	1.89	0.54
1:A:612:ASP:O	1:A:634:VAL:HG11	2.07	0.54
1:B:645:GLU:OE1	1:B:645:GLU:HA	2.08	0.54
1:B:791:GLU:OE1	1:B:824:THR:HA	2.09	0.53
1:B:417:TYR:OH	1:B:428:HIS:NE2	2.34	0.53
1:A:202:ASP:OD2	1:A:461:TYR:OH	2.23	0.53
1:A:634:VAL:O	1:A:638:LYS:N	2.36	0.53
1:B:475:GLU:HA	1:B:478:GLN:OE1	2.08	0.53
1:A:327:GLU:HG2	1:A:333:ARG:HH21	1.74	0.53
1:A:568:HIS:O	1:A:568:HIS:ND1	2.36	0.53
1:B:390:LEU:HD22	1:B:410:ILE:HD13	1.91	0.53
1:A:395:GLN:O	1:A:399:GLU:HG3	2.08	0.53
1:A:554:GLU:OE1	1:A:554:GLU:N	2.36	0.53
1:B:134:LEU:HG	1:B:138:MET:HE3	1.91	0.52
1:A:428:HIS:HB3	1:A:432:ARG:NH1	2.24	0.52
1:A:217:CYS:SG	1:A:445:SER:HB2	2.49	0.51
1:B:330:ASN:HB3	1:B:333:ARG:HD3	1.91	0.51
1:B:149:PRO:HB2	1:B:457:THR:HG21	1.92	0.51
1:B:530:ALA:HB3	1:B:541:LEU:HB2	1.93	0.51
1:A:33:ASP:OD1	1:A:433:ARG:NH1	2.43	0.51
1:A:423:PHE:C	1:A:423:PHE:HD1	2.13	0.51
1:B:20:GLN:O	1:B:24:GLN:HG3	2.11	0.51
1:A:503:THR:O	1:A:507:ALA:N	2.38	0.51
1:A:580:GLN:O	1:A:580:GLN:HG2	2.10	0.51
1:A:798:LEU:N	3:A:1105:HOH:O	2.44	0.51
1:B:149:PRO:HB2	1:B:457:THR:CG2	2.40	0.51
1:B:530:ALA:HA	1:B:599:GLY:O	2.11	0.51
1:A:447:ASP:CB	1:A:451:LYS:HD2	2.41	0.51
1:A:620:THR:HG22	1:A:621:LYS:H	1.76	0.51
1:B:540:VAL:HG22	1:B:560:TYR:HE1	1.76	0.51
1:A:403:GLU:OE1	1:A:405:ARG:N	2.30	0.50
1:A:44:ARG:HD3	3:A:1118:HOH:O	2.12	0.50
1:A:489:ARG:O	1:A:492:LYS:HB3	2.11	0.50
1:A:676:LEU:HB2	1:A:838:MET:HE3	1.94	0.49
1:A:846:ARG:HG3	1:A:854:LEU:HD11	1.94	0.49
1:B:718:LEU:O	1:B:722:ARG:HG3	2.12	0.49
1:A:199:PHE:N	1:A:199:PHE:CD1	2.81	0.49
1:A:408:SER:O	1:A:440:VAL:HA	2.13	0.49
1:B:33:ASP:OD1	1:B:433:ARG:NH1	2.46	0.49

*Continued on next page...*

*Continued from previous page...*

Atom-1	Atom-2	Interatomic distance (Å)	Clash overlap (Å)
1:A:303:GLY:HA2	1:A:339:ILE:HD11	1.95	0.49
1:B:532:ASP:HB3	1:B:897:SER:O	2.13	0.49
1:B:152:PHE:HB2	1:B:206:VAL:HG22	1.94	0.48
1:A:680:THR:HG23	2:A:1002:604:O24	2.13	0.48
1:A:851:LEU:HB3	1:A:854:LEU:HD21	1.95	0.48
1:B:138:MET:HE3	1:B:199:PHE:CE2	2.49	0.48
1:B:303:GLY:HA2	1:B:339:ILE:HD11	1.95	0.48
1:B:468:ARG:HD2	1:B:468:ARG:HA	1.63	0.48
1:B:899:LYS:O	1:B:903:LEU:HG	2.14	0.48
1:A:353:ARG:O	1:A:357:MET:HG3	2.14	0.48
1:A:218:GLY:HA2	1:A:221:ASP:O	2.13	0.48
1:A:338:ASP:OD2	1:A:358:ARG:NH1	2.47	0.48
1:A:96:LYS:HB3	1:A:106:GLU:HB3	1.96	0.48
1:A:503:THR:O	1:A:506:SER:N	2.47	0.48
1:A:523:THR:HB	1:A:910:ARG:HH22	1.79	0.48
1:B:36:LEU:HD11	1:B:384:SER:HB3	1.95	0.48
1:A:128:ASP:CG	1:A:195:ARG:HH21	2.16	0.47
1:A:419:LYS:HD3	1:A:419:LYS:N	2.28	0.47
1:B:19:VAL:HG13	1:B:373:ARG:NE	2.28	0.47
1:A:451:LYS:H	1:A:451:LYS:HG3	1.51	0.47
1:A:558:LYS:HD2	1:A:588:TYR:CD2	2.48	0.47
1:B:200:ASP:OD1	1:B:201:ILE:N	2.47	0.47
1:A:33:ASP:OD2	1:A:433:ARG:HD2	2.15	0.47
1:A:444:ARG:NH1	3:A:1103:HOH:O	2.36	0.47
1:A:865:TYR:CE2	1:A:872:ALA:HB2	2.50	0.47
1:A:164:ASP:OD1	1:A:164:ASP:N	2.45	0.47
1:B:531:LEU:HD13	1:B:533:LEU:HD11	1.96	0.47
1:A:447:ASP:HB3	1:A:451:LYS:HD2	1.97	0.47
1:A:722:ARG:HG2	1:A:744:MET:CE	2.45	0.47
1:A:166:SER:O	1:A:184:ASP:HA	2.15	0.46
1:A:846:ARG:HD2	1:A:852:ASP:O	2.15	0.46
1:B:748:MET:HE2	1:B:748:MET:HB3	1.85	0.46
1:A:327:GLU:CG	1:A:333:ARG:HH21	2.29	0.46
1:A:910:ARG:HG2	1:A:911:ILE:HD12	1.97	0.46
1:A:527:ASP:OD1	1:A:544:ARG:HD3	2.16	0.46
1:A:576:ASP:OD1	1:A:643:ARG:NH1	2.35	0.46
1:A:39:ILE:HD11	1:A:273:ILE:HG13	1.98	0.46
1:A:91:ARG:HD2	1:A:109:ASN:HD22	1.80	0.46
1:A:254:ARG:HD2	3:A:1115:HOH:O	2.15	0.46
1:A:686:TYR:HB2	1:A:845:ILE:HD11	1.97	0.46
1:B:239:MET:HB3	1:B:254:ARG:HH21	1.73	0.45

*Continued on next page...*

*Continued from previous page...*

Atom-1	Atom-2	Interatomic distance (Å)	Clash overlap (Å)
1:A:620:THR:HG22	1:A:621:LYS:N	2.31	0.45
1:B:100:ASN:OD1	1:B:101:GLY:N	2.48	0.45
1:A:632:ASP:OD1	1:A:634:VAL:HG22	2.16	0.45
1:A:865:TYR:HD2	1:A:865:TYR:O	1.99	0.45
1:B:164:ASP:HB3	1:B:204:VAL:O	2.17	0.45
1:B:396:ARG:CG	1:B:396:ARG:HH11	2.29	0.45
1:B:678:VAL:HG12	1:B:864:LEU:HD23	1.99	0.45
1:A:94:TRP:CZ2	1:A:96:LYS:HB2	2.52	0.44
1:A:612:ASP:O	1:A:634:VAL:HG21	2.18	0.44
1:A:846:ARG:NH1	1:A:885:LYS:HB2	2.33	0.44
1:A:497:ARG:HG2	1:A:507:ALA:CB	2.45	0.44
1:A:238:TYR:CD2	1:A:239:MET:O	2.71	0.44
1:A:87:GLY:C	1:A:89:ASN:H	2.21	0.43
1:A:137:PHE:O	1:A:141:LEU:HB2	2.17	0.43
1:A:347:ASP:OD2	1:A:350:ARG:HB2	2.18	0.43
1:A:110:GLN:NE2	1:A:111:ILE:H	2.17	0.43
1:B:244:HIS:HB3	1:B:396:ARG:HH22	1.83	0.43
1:B:841:VAL:O	1:B:845:ILE:HG13	2.18	0.43
1:A:83:LEU:HD12	1:A:152:PHE:CE1	2.53	0.43
1:A:115:PRO:HB2	1:A:117:ASP:OD1	2.17	0.43
1:A:167:PHE:CE1	1:A:184:ASP:HB2	2.53	0.43
1:A:762:THR:O	1:A:770:GLY:HA2	2.18	0.43
1:B:543:VAL:HG11	1:B:903:LEU:HD21	1.99	0.43
1:A:338:ASP:CG	1:A:358:ARG:HH12	2.22	0.43
1:A:495:MET:HG2	1:A:511:MET:CE	2.47	0.43
1:A:861:ASP:CG	1:A:894:GLU:HA	2.39	0.43
1:B:241:GLU:HG2	1:B:813:CYS:SG	2.59	0.43
1:A:607:GLN:HG3	1:A:609:ASN:HD21	1.83	0.43
1:A:851:LEU:HD23	1:A:854:LEU:HD22	2.00	0.43
1:A:45:LYS:HE2	1:B:794:CYS:SG	2.58	0.43
1:B:563:PRO:HB2	1:B:566:VAL:HG12	2.00	0.43
1:A:495:MET:HA	1:A:511:MET:HE2	2.01	0.42
1:B:90:PHE:CD1	1:B:90:PHE:N	2.87	0.42
1:A:63:MET:SD	1:A:259:MET:HG2	2.59	0.42
1:A:481:HIS:HD1	1:A:481:HIS:C	2.22	0.42
1:A:658:THR:HG21	1:A:683:ASN:HB3	2.00	0.42
1:B:614:SER:O	1:B:633:VAL:HG23	2.19	0.42
1:A:607:GLN:HE21	1:A:609:ASN:ND2	2.18	0.42
1:B:473:THR:OG1	1:B:764:ARG:NH2	2.52	0.42
1:B:518:ALA:HB3	1:B:911:ILE:HD11	2.00	0.42
1:B:33:ASP:OD2	1:B:433:ARG:HD2	2.19	0.42

*Continued on next page...*



*Continued from previous page...*

Atom-1	Atom-2	Interatomic distance (Å)	Clash overlap (Å)
1:B:657:ASP:OD2	2:B:1002:604:N21	2.52	0.42
1:B:679:GLY:HA3	2:B:1002:604:O24	2.19	0.42
1:A:184:ASP:O	1:A:188:LEU:HG	2.20	0.42
1:A:536:THR:HG22	1:A:567:MET:HE3	2.02	0.42
1:A:418:LYS:NZ	1:A:445:SER:O	2.38	0.42
1:B:183:ARG:HH11	1:B:188:LEU:HD21	1.85	0.42
1:A:19:VAL:HG13	1:A:373:ARG:NE	2.35	0.41
1:B:497:ARG:HG2	1:B:507:ALA:CB	2.48	0.41
1:B:537:ASN:HA	1:B:561:ALA:HA	2.02	0.41
1:B:838:MET:O	1:B:842:VAL:HG22	2.19	0.41
1:A:201:ILE:HD12	1:A:201:ILE:HA	1.93	0.41
1:B:163:LEU:HD12	1:B:163:LEU:HA	1.88	0.41
1:B:735:ASN:OD1	1:B:735:ASN:N	2.53	0.41
1:A:591:MET:O	1:A:594:VAL:HG23	2.20	0.41
1:A:31:LEU:HD23	1:A:31:LEU:HA	1.87	0.41
1:A:677:ILE:O	1:A:682:SER:HA	2.20	0.41
1:B:644:ARG:O	1:B:644:ARG:HG2	2.21	0.41
1:B:620:THR:OG1	1:B:621:LYS:HG3	2.20	0.41
1:B:895:ASP:CG	1:B:898:GLY:HA3	2.40	0.41
1:A:91:ARG:CD	1:A:109:ASN:HD22	2.33	0.41
1:A:486:GLU:O	1:A:490:ARG:HG3	2.21	0.41
1:B:19:VAL:HG13	1:B:373:ARG:HE	1.86	0.41
1:B:427:LEU:O	1:B:431:VAL:HG12	2.20	0.41
1:A:412:VAL:HG11	1:A:417:TYR:CE2	2.55	0.41
1:A:544:ARG:HB3	1:A:554:GLU:OE2	2.21	0.41
1:A:639:GLU:O	1:A:643:ARG:HG3	2.21	0.41
1:B:900:GLY:O	1:B:904:ILE:HG13	2.21	0.41
1:A:225:GLU:CD	1:A:254:ARG:HH22	2.25	0.41
1:A:431:VAL:O	1:A:435:VAL:HG22	2.20	0.41
1:A:585:PHE:HA	1:A:588:TYR:HB3	2.03	0.41
1:A:610:SER:HB3	1:A:613:GLU:HB3	2.02	0.41
1:B:525:LYS:HA	1:B:545:VAL:HG12	2.03	0.41
1:A:412:VAL:HG11	1:A:417:TYR:CD2	2.56	0.40
1:B:645:GLU:OE1	1:B:645:GLU:CA	2.69	0.40
1:A:441:ARG:HH22	1:A:443:LEU:HD13	1.86	0.40
1:A:532:ASP:HA	1:A:601:THR:HB	2.03	0.40
1:B:17:ASP:N	1:B:17:ASP:OD1	2.54	0.40
1:B:540:VAL:HG21	1:B:585:PHE:HB2	2.02	0.40
1:A:615:ILE:HD13	1:A:632:ASP:HA	2.02	0.40
1:A:690:MET:HG3	1:A:701:GLY:C	2.42	0.40
1:B:543:VAL:HG12	1:B:545:VAL:HG23	2.03	0.40

*Continued on next page...*



Continued from previous page...

Atom-1	Atom-2	Interatomic distance (Å)	Clash overlap (Å)
1:B:22:VAL:HG11	1:B:373:ARG:HG3	2.03	0.40
1:A:199:PHE:HD1	1:A:199:PHE:N	2.15	0.40
1:A:274:ARG:HG2	1:A:296:MET:SD	2.61	0.40
1:A:860:VAL:HG11	1:A:865:TYR:CD1	2.56	0.40
1:B:224:CYS:HA	1:B:409:THR:O	2.22	0.40
1:B:868:HIS:CG	1:B:869:PRO:HD2	2.57	0.40

There are no symmetry-related clashes.

## 5.3 Torsion angles [i](#)

### 5.3.1 Protein backbone [i](#)

In the following table, the Percentiles column shows the percent Ramachandran outliers of the chain as a percentile score with respect to all X-ray entries followed by that with respect to entries of similar resolution.

The Analysed column shows the number of residues for which the backbone conformation was analysed, and the total number of residues.

Mol	Chain	Analysed	Favoured	Allowed	Outliers	Percentiles	
1	A	875/923 (95%)	850 (97%)	25 (3%)	0	100	100
1	B	887/923 (96%)	870 (98%)	16 (2%)	1 (0%)	51	75
All	All	1762/1846 (95%)	1720 (98%)	41 (2%)	1 (0%)	51	75

All (1) Ramachandran outliers are listed below:

Mol	Chain	Res	Type
1	B	648	ASP

### 5.3.2 Protein sidechains [i](#)

In the following table, the Percentiles column shows the percent sidechain outliers of the chain as a percentile score with respect to all X-ray entries followed by that with respect to entries of similar resolution.

The Analysed column shows the number of residues for which the sidechain conformation was analysed, and the total number of residues.

Mol	Chain	Analysed	Rotameric	Outliers	Percentiles	
1	A	719/782 (92%)	705 (98%)	14 (2%)	57	74
1	B	729/782 (93%)	713 (98%)	16 (2%)	52	71
All	All	1448/1564 (93%)	1418 (98%)	30 (2%)	53	72

All (30) residues with a non-rotameric sidechain are listed below:

Mol	Chain	Res	Type
1	A	199	PHE
1	A	220	ASP
1	A	238	TYR
1	A	261	TRP
1	A	334	PHE
1	A	417	TYR
1	A	423	PHE
1	A	481	HIS
1	A	538	PHE
1	A	572	ASP
1	A	588	TYR
1	A	709	TRP
1	A	865	TYR
1	A	910	ARG
1	B	90	PHE
1	B	168	LEU
1	B	190	ARG
1	B	261	TRP
1	B	334	PHE
1	B	347	ASP
1	B	457	THR
1	B	493	VAL
1	B	572	ASP
1	B	588	TYR
1	B	600	PHE
1	B	689	GLU
1	B	709	TRP
1	B	748	MET
1	B	843	ASP
1	B	910	ARG

Sometimes sidechains can be flipped to improve hydrogen bonding and reduce clashes. All (4) such sidechains are listed below:

Mol	Chain	Res	Type
1	A	109	ASN
1	A	110	GLN
1	A	478	GLN
1	A	609	ASN

### 5.3.3 RNA [i](#)

There are no RNA molecules in this entry.

### 5.4 Non-standard residues in protein, DNA, RNA chains [i](#)

There are no non-standard protein/DNA/RNA residues in this entry.

### 5.5 Carbohydrates [i](#)

There are no monosaccharides in this entry.

### 5.6 Ligand geometry [i](#)

4 ligands are modelled in this entry.

In the following table, the Counts columns list the number of bonds (or angles) for which Mogul statistics could be retrieved, the number of bonds (or angles) that are observed in the model and the number of bonds (or angles) that are defined in the Chemical Component Dictionary. The Link column lists molecule types, if any, to which the group is linked. The Z score for a bond length (or angle) is the number of standard deviations the observed value is removed from the expected value. A bond length (or angle) with  $|Z| > 2$  is considered an outlier worth inspection. RMSZ is the root-mean-square of all Z scores of the bond lengths (or angles).

Mol	Type	Chain	Res	Link	Bond lengths			Bond angles		
					Counts	RMSZ	# Z  > 2	Counts	RMSZ	# Z  > 2
2	604	A	1001	-	31,35,35	1.63	2 (6%)	42,52,52	1.49	5 (11%)
2	604	A	1002	-	31,35,35	1.54	3 (9%)	42,52,52	1.77	10 (23%)
2	604	B	1001	-	25,31,35	1.89	2 (8%)	32,45,52	2.37	13 (40%)
2	604	B	1002	-	31,35,35	1.54	1 (3%)	42,52,52	1.64	9 (21%)

In the following table, the Chirals column lists the number of chiral outliers, the number of chiral centers analysed, the number of these observed in the model and the number defined in the Chemical Component Dictionary. Similar counts are reported in the Torsion and Rings columns. '-' means no outliers of that kind were identified.

Mol	Type	Chain	Res	Link	Chirals	Torsions	Rings
2	604	A	1001	-	-	0/16/44/44	0/3/3/3
2	604	A	1002	-	-	7/16/44/44	0/3/3/3
2	604	B	1001	-	-	3/12/42/44	0/2/2/3
2	604	B	1002	-	-	4/16/44/44	0/3/3/3

All (8) bond length outliers are listed below:

Mol	Chain	Res	Type	Atoms	Z	Observed(Å)	Ideal(Å)
2	B	1001	604	S32-N21	8.12	1.74	1.61
2	A	1001	604	S32-N21	7.28	1.72	1.61
2	A	1002	604	S32-N21	6.59	1.71	1.61
2	B	1002	604	S32-N21	6.46	1.71	1.61
2	A	1001	604	C10-S32	-2.32	1.73	1.76
2	A	1002	604	C7-C12	2.11	1.54	1.49
2	A	1002	604	O25-S32	2.03	1.45	1.43
2	B	1001	604	O25-S32	2.00	1.45	1.43

All (37) bond angle outliers are listed below:

Mol	Chain	Res	Type	Atoms	Z	Observed(°)	Ideal(°)
2	B	1001	604	O26-S32-C10	-6.19	97.47	107.66
2	B	1001	604	C5A-C7-C9	-5.28	107.14	109.05
2	A	1001	604	O25-S32-N21	4.49	114.05	107.04
2	B	1001	604	C1-C2-C3	-4.48	104.43	110.54
2	A	1002	604	C5A-C7-C9	-4.42	107.45	109.05
2	A	1002	604	C1-O5-C5	-4.33	105.49	113.66
2	A	1001	604	O26-S32-C10	-4.05	101.00	107.66
2	B	1002	604	C6-N21-S32	-3.79	112.52	120.02
2	B	1002	604	O26-S32-N21	3.69	112.81	107.04
2	A	1001	604	O24-C12-O22	3.54	131.20	123.35
2	B	1001	604	O25-S32-C10	-3.49	101.92	107.66
2	B	1002	604	C5A-C7-C9	-3.47	107.80	109.05
2	A	1002	604	O26-S32-C10	-3.45	101.99	107.66
2	B	1001	604	O25-S32-N21	3.14	111.95	107.04
2	A	1002	604	O25-S32-N21	3.09	111.87	107.04
2	B	1001	604	O5-C1-C2	3.03	112.56	109.52
2	B	1001	604	O23-C11-C6A	-2.95	116.30	123.03
2	A	1002	604	O22-C12-C7	-2.92	114.84	121.94
2	B	1001	604	O5-C5-C6	2.90	111.38	105.96
2	B	1001	604	O26-S32-N21	2.87	111.53	107.04
2	A	1002	604	O24-C12-O22	2.65	129.24	123.35
2	B	1001	604	C6A-C11-N2	2.63	119.62	114.56

*Continued on next page...*

Continued from previous page...

Mol	Chain	Res	Type	Atoms	Z	Observed(°)	Ideal(°)
2	A	1002	604	O5-C1-C2	-2.57	106.94	109.52
2	B	1002	604	O22-C12-C7	-2.53	115.80	121.94
2	B	1001	604	O24-C12-O22	2.50	128.89	123.35
2	A	1001	604	O22-C12-C7	-2.46	115.97	121.94
2	B	1001	604	O22-C12-C7	-2.41	116.08	121.94
2	B	1002	604	O24-C12-O22	2.41	128.69	123.35
2	B	1002	604	O26-S32-C10	-2.34	103.80	107.66
2	B	1002	604	O26-S32-O25	2.32	122.40	119.55
2	B	1001	604	O26-S32-O25	2.31	122.38	119.55
2	B	1002	604	O25-S32-C10	-2.23	103.98	107.66
2	B	1002	604	O23-C11-N2	2.23	126.55	122.45
2	A	1001	604	O26-S32-N21	2.12	110.35	107.04
2	A	1002	604	O5-C5-C6	2.11	109.90	105.96
2	A	1002	604	O26-S32-O25	2.11	122.14	119.55
2	A	1002	604	C3-C4-C5	-2.07	106.54	110.24

There are no chirality outliers.

All (14) torsion outliers are listed below:

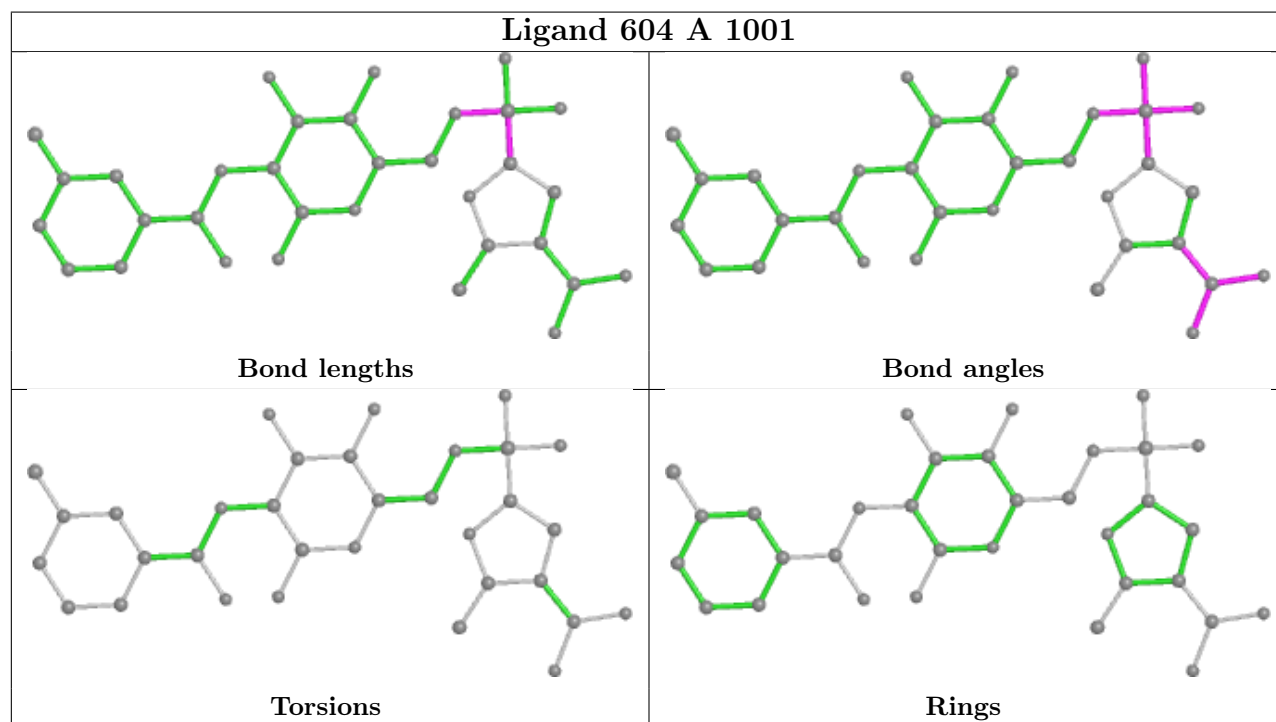
Mol	Chain	Res	Type	Atoms
2	B	1002	604	O23-C11-C6A-C2A
2	B	1002	604	O23-C11-C6A-C4A
2	B	1002	604	N2-C11-C6A-C2A
2	B	1002	604	N2-C11-C6A-C4A
2	A	1002	604	C6-N21-S32-O25
2	A	1002	604	O23-C11-C6A-C4A
2	A	1002	604	N2-C11-C6A-C4A
2	A	1002	604	O23-C11-C6A-C2A
2	A	1002	604	C6-N21-S32-O26
2	A	1002	604	N2-C11-C6A-C2A
2	A	1002	604	C6-N21-S32-C10
2	B	1001	604	C6-N21-S32-O25
2	B	1001	604	C4-C5-C6-N21
2	B	1001	604	O5-C5-C6-N21

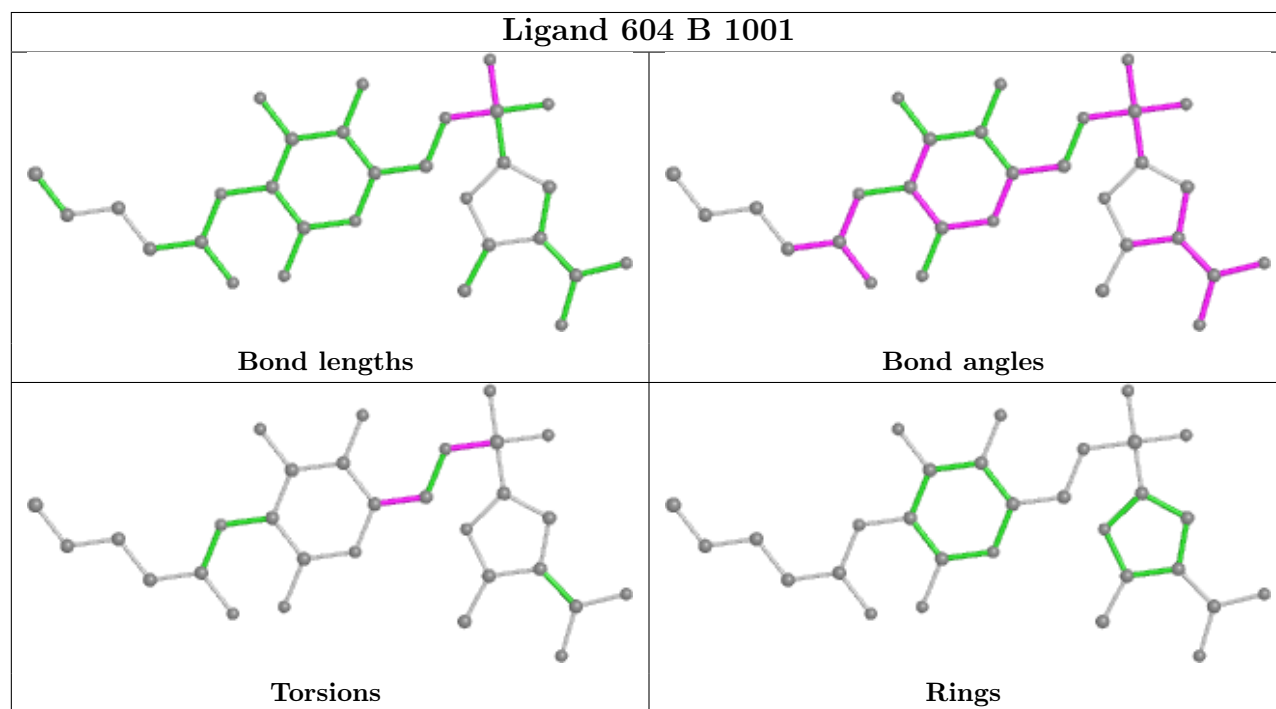
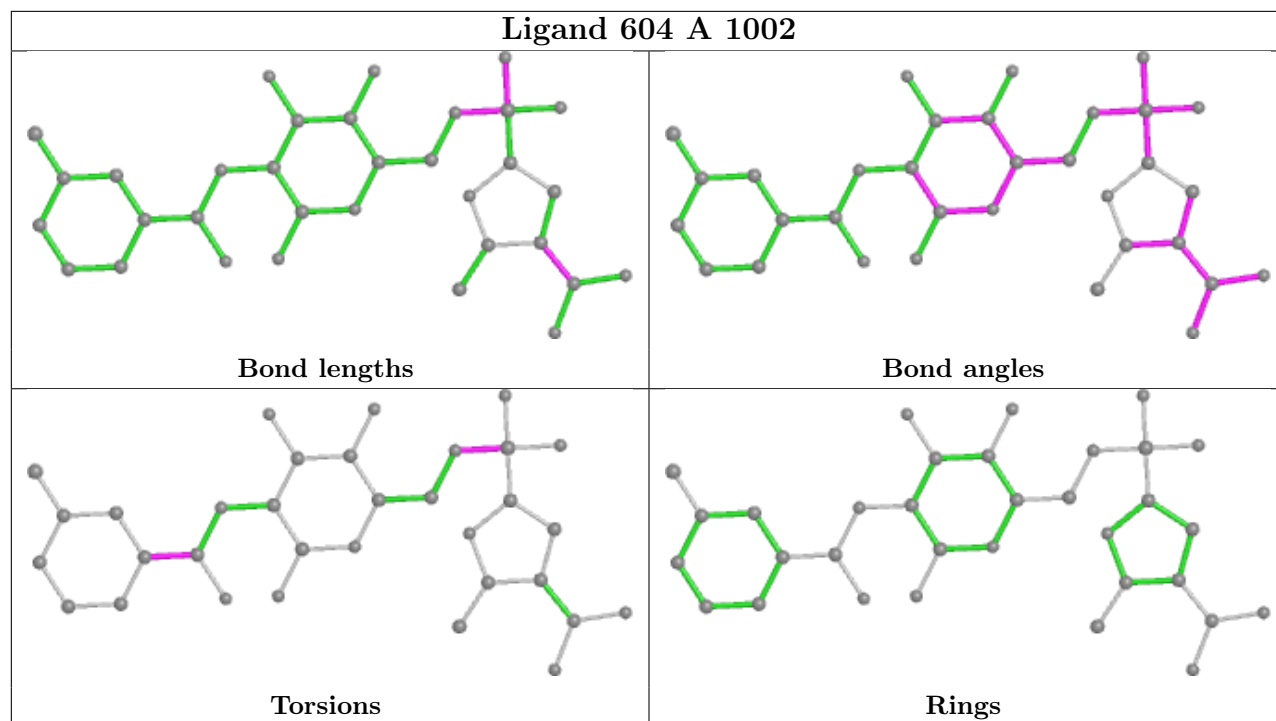
There are no ring outliers.

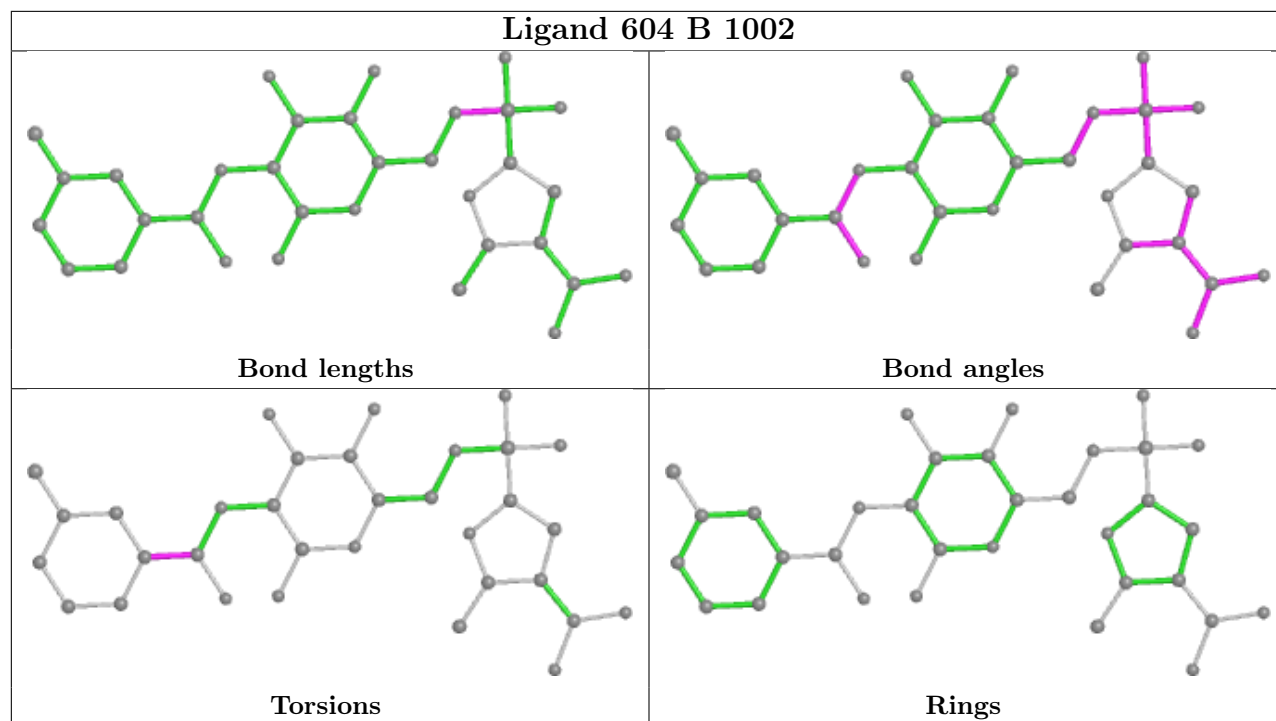
2 monomers are involved in 4 short contacts:

Mol	Chain	Res	Type	Clashes	Symm-Clashes
2	A	1002	604	2	0
2	B	1002	604	2	0

The following is a two-dimensional graphical depiction of Mogul quality analysis of bond lengths, bond angles, torsion angles, and ring geometry for all instances of the Ligand of Interest. In addition, ligands with molecular weight > 250 and outliers as shown on the validation Tables will also be included. For torsion angles, if less than 5% of the Mogul distribution of torsion angles is within 10 degrees of the torsion angle in question, then that torsion angle is considered an outlier. Any bond that is central to one or more torsion angles identified as an outlier by Mogul will be highlighted in the graph. For rings, the root-mean-square deviation (RMSD) between the ring in question and similar rings identified by Mogul is calculated over all ring torsion angles. If the average RMSD is greater than 60 degrees and the minimal RMSD between the ring in question and any Mogul-identified rings is also greater than 60 degrees, then that ring is considered an outlier. The outliers are highlighted in purple. The color gray indicates Mogul did not find sufficient equivalents in the CSD to analyse the geometry.







## 5.7 Other polymers [i](#)

There are no such residues in this entry.

## 5.8 Polymer linkage issues [i](#)

There are no chain breaks in this entry.



## 6 Fit of model and data

### 6.1 Protein, DNA and RNA chains

In the following table, the column labelled ‘#RSRZ > 2’ contains the number (and percentage) of RSRZ outliers, followed by percent RSRZ outliers for the chain as percentile scores relative to all X-ray entries and entries of similar resolution. The OWAB column contains the minimum, median, 95<sup>th</sup> percentile and maximum values of the occupancy-weighted average B-factor per residue. The column labelled ‘Q < 0.9’ lists the number of (and percentage) of residues with an average occupancy less than 0.9.

Mol	Chain	Analysed	<RSRZ>	#RSRZ>2	OWAB(Å <sup>2</sup> )	Q<0.9
1	A	880/923 (95%)	0.12	22 (2%) 57 64	21, 47, 80, 100	0
1	B	891/923 (96%)	-0.05	7 (0%) 86 89	19, 36, 70, 94	0
All	All	1771/1846 (95%)	0.03	29 (1%) 72 78	19, 41, 77, 100	0

All (29) RSRZ outliers are listed below:

Mol	Chain	Res	Type	RSRZ
1	A	895	ASP	3.5
1	B	178	SER	3.3
1	A	641	ILE	3.3
1	A	499	LEU	3.2
1	A	602	PHE	3.2
1	A	647	PHE	3.1
1	A	853	ALA	2.9
1	A	646	GLU	2.9
1	A	700	GLU	2.8
1	A	636	LEU	2.8
1	A	85	LEU	2.6
1	A	447	ASP	2.6
1	A	687	MET	2.6
1	A	670	PRO	2.5
1	A	112	TYR	2.5
1	B	550	TRP	2.4
1	A	854	LEU	2.4
1	A	702	ARG	2.3
1	A	879	VAL	2.3
1	B	347	ASP	2.3
1	A	533	LEU	2.2
1	A	705	VAL	2.2
1	B	556	HIS	2.2
1	B	566	VAL	2.2

*Continued on next page...*

*Continued from previous page...*

Mol	Chain	Res	Type	RSRZ
1	B	911	ILE	2.2
1	A	645	GLU	2.2
1	A	126	LEU	2.1
1	B	180	VAL	2.1
1	A	638	LYS	2.0

## 6.2 Non-standard residues in protein, DNA, RNA chains [i](#)

There are no non-standard protein/DNA/RNA residues in this entry.

## 6.3 Carbohydrates [i](#)

There are no monosaccharides in this entry.

## 6.4 Ligands [i](#)

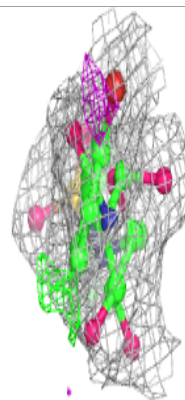
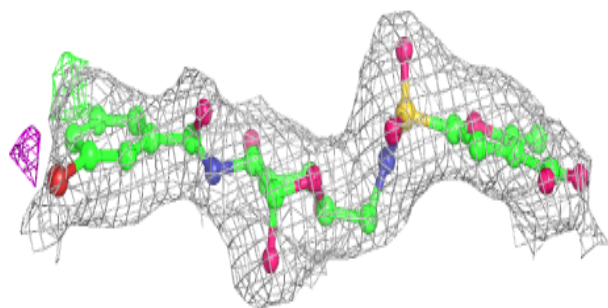
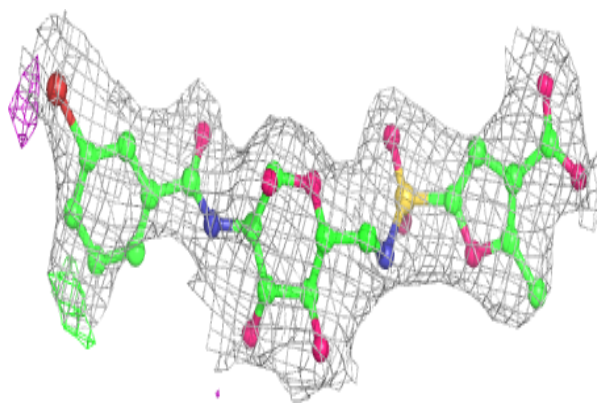
In the following table, the Atoms column lists the number of modelled atoms in the group and the number defined in the chemical component dictionary. The B-factors column lists the minimum, median, 95<sup>th</sup> percentile and maximum values of B factors of atoms in the group. The column labelled 'Q< 0.9' lists the number of atoms with occupancy less than 0.9.

Mol	Type	Chain	Res	Atoms	RSCC	RSR	B-factors( $\text{\AA}^2$ )	Q<0.9
2	604	A	1002	33/33	0.95	0.18	36,45,72,147	0
2	604	A	1001	33/33	0.96	0.18	24,35,42,73	0
2	604	B	1002	33/33	0.96	0.15	27,33,51,111	0
2	604	B	1001	30/33	0.97	0.16	21,29,46,78	0

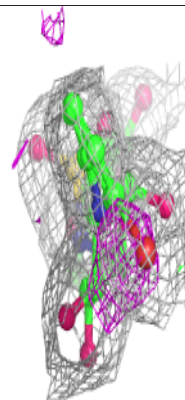
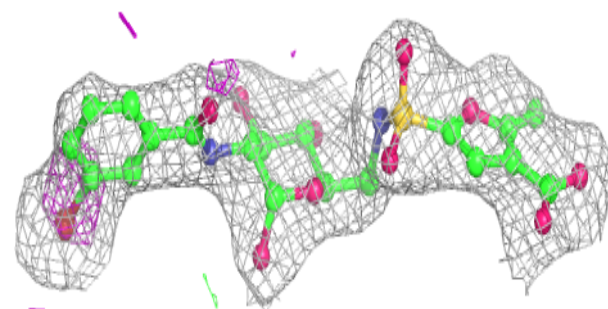
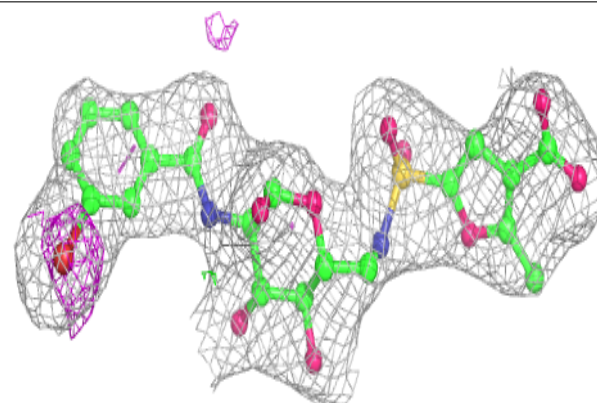
The following is a graphical depiction of the model fit to experimental electron density of all instances of the Ligand of Interest. In addition, ligands with molecular weight > 250 and outliers as shown on the geometry validation Tables will also be included. Each fit is shown from different orientation to approximate a three-dimensional view.

**Electron density around 604 A 1002:**

$2mF_o-DF_c$  (at 0.7 rmsd) in gray  
 $mF_o-DF_c$  (at 3 rmsd) in purple (negative)  
and green (positive)

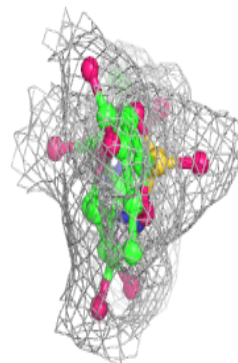
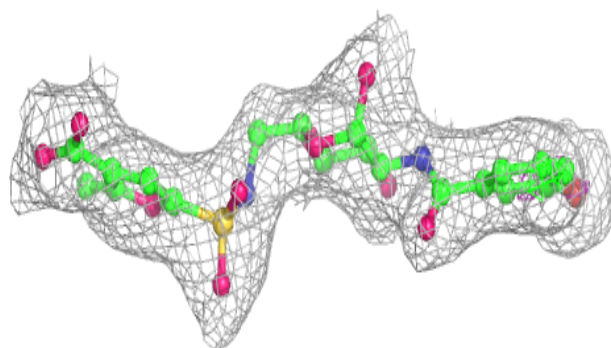
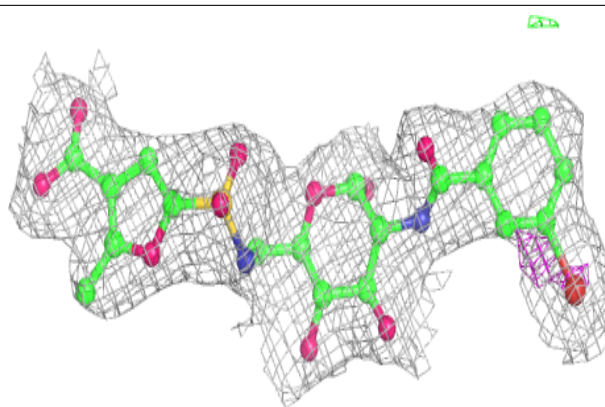
**Electron density around 604 A 1001:**

$2mF_o-DF_c$  (at 0.7 rmsd) in gray  
 $mF_o-DF_c$  (at 3 rmsd) in purple (negative)  
and green (positive)

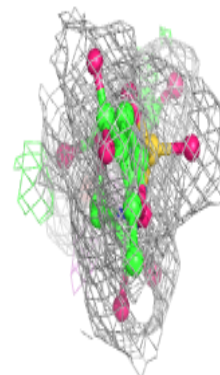
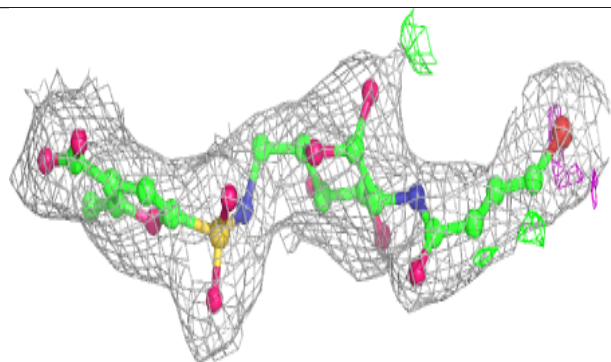
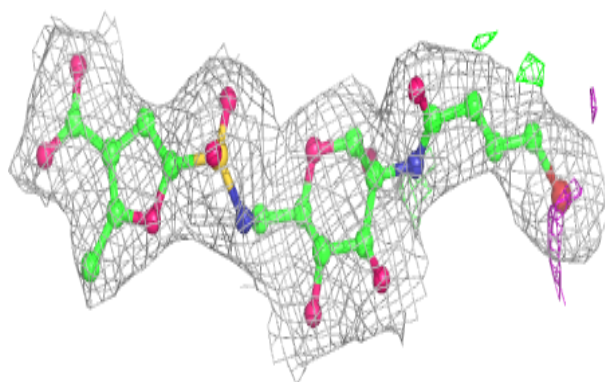


**Electron density around 604 B 1002:**

$2mF_o-DF_c$  (at 0.7 rmsd) in gray  
 $mF_o-DF_c$  (at 3 rmsd) in purple (negative)  
and green (positive)

**Electron density around 604 B 1001:**

$2mF_o-DF_c$  (at 0.7 rmsd) in gray  
 $mF_o-DF_c$  (at 3 rmsd) in purple (negative)  
and green (positive)



## 6.5 Other polymers [i](#)

There are no such residues in this entry.