



Full wwPDB X-ray Structure Validation Report ⓘ

Oct 28, 2024 – 08:36 AM JST

PDB ID : 5GYX
Title : Plant receptor complex
Authors : Ma, R.; Han, Z.; Hu, Z.; Lin, G.; Gong, X.; Zhang, H.; June, N.; Chai, J.
Deposited on : 2016-09-24
Resolution : 2.35 Å(reported)

This is a Full wwPDB X-ray Structure Validation Report for a publicly released PDB entry.

We welcome your comments at validation@mail.wwpdb.org

A user guide is available at

<https://www.wwpdb.org/validation/2017/XrayValidationReportHelp>

with specific help available everywhere you see the ⓘ symbol.

The types of validation reports are described at

<http://www.wwpdb.org/validation/2017/FAQs#types>.

The following versions of software and data (see [references ⓘ](#)) were used in the production of this report:

MolProbity : 4.02b-467
Mogul : 1.8.5 (274361), CSD as541be (2020)
Xtriage (Phenix) : 1.13
EDS : 3.0
Percentile statistics : 20231227.v01 (using entries in the PDB archive December 27th 2023)
CCP4 : 9.0.003 (Gargrove)
Density-Fitness : 1.0.11
Ideal geometry (proteins) : Engh & Huber (2001)
Ideal geometry (DNA, RNA) : Parkinson et al. (1996)
Validation Pipeline (wwPDB-VP) : 2.39

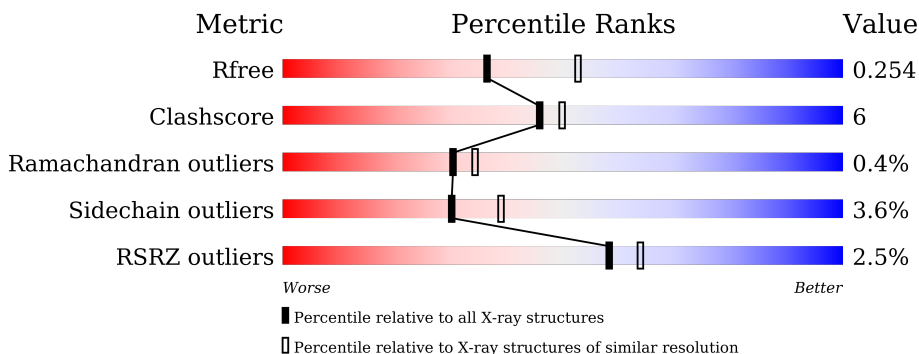
1 Overall quality at a glance

The following experimental techniques were used to determine the structure:

X-RAY DIFFRACTION

The reported resolution of this entry is 2.35 Å.

Percentile scores (ranging between 0-100) for global validation metrics of the entry are shown in the following graphic. The table shows the number of entries on which the scores are based.



Metric	Whole archive (#Entries)	Similar resolution (#Entries, resolution range(Å))
R_{free}	164625	1460 (2.36-2.36)
Clashscore	180529	1571 (2.36-2.36)
Ramachandran outliers	177936	1559 (2.36-2.36)
Sidechain outliers	177891	1559 (2.36-2.36)
RSRZ outliers	164620	1460 (2.36-2.36)

The table below summarises the geometric issues observed across the polymeric chains and their fit to the electron density. The red, orange, yellow and green segments of the lower bar indicate the fraction of residues that contain outliers for ≥ 3 , 2, 1 and 0 types of geometric quality criteria respectively. A grey segment represents the fraction of residues that are not modelled. The numeric value for each fraction is indicated below the corresponding segment, with a dot representing fractions $\leq 5\%$. The upper red bar (where present) indicates the fraction of residues that have poor fit to the electron density. The numeric value is given above the bar.

Mol	Chain	Length	Quality of chain
1	A	405	 83% 13% ..
1	B	405	 87% 12% .
2	G	59	 80% 19% .
2	H	59	 78% 14% 8%

2 Entry composition [i](#)

There are 4 unique types of molecules in this entry. The entry contains 7701 atoms, of which 0 are hydrogens and 0 are deuteriums.

In the tables below, the ZeroOcc column contains the number of atoms modelled with zero occupancy, the AltConf column contains the number of residues with at least one atom in alternate conformation and the Trace column contains the number of residues modelled with at most 2 atoms.

- Molecule 1 is a protein called S-receptor kinase SRK9.

Mol	Chain	Residues	Atoms					ZeroOcc	AltConf	Trace
			Total	C	N	O	S			
1	A	400	3189	2015	550	602	22	0	0	0
1	B	405	3220	2034	555	609	22	0	0	0

There are 10 discrepancies between the modelled and reference sequences:

Chain	Residue	Modelled	Actual	Comment	Reference
A	-4	ALA	-	expression tag	UNP Q7DN95
A	-3	ALA	-	expression tag	UNP Q7DN95
A	-2	ALA	-	expression tag	UNP Q7DN95
A	-1	ALA	-	expression tag	UNP Q7DN95
A	0	ALA	-	expression tag	UNP Q7DN95
B	-4	ALA	-	expression tag	UNP Q7DN95
B	-3	ALA	-	expression tag	UNP Q7DN95
B	-2	ALA	-	expression tag	UNP Q7DN95
B	-1	ALA	-	expression tag	UNP Q7DN95
B	0	ALA	-	expression tag	UNP Q7DN95

- Molecule 2 is a protein called S-locus protein 11.

Mol	Chain	Residues	Atoms					ZeroOcc	AltConf	Trace
			Total	C	N	O	S			
2	G	58	442	267	85	83	7	0	0	0
2	H	54	416	251	80	78	7	0	0	0

There are 8 discrepancies between the modelled and reference sequences:

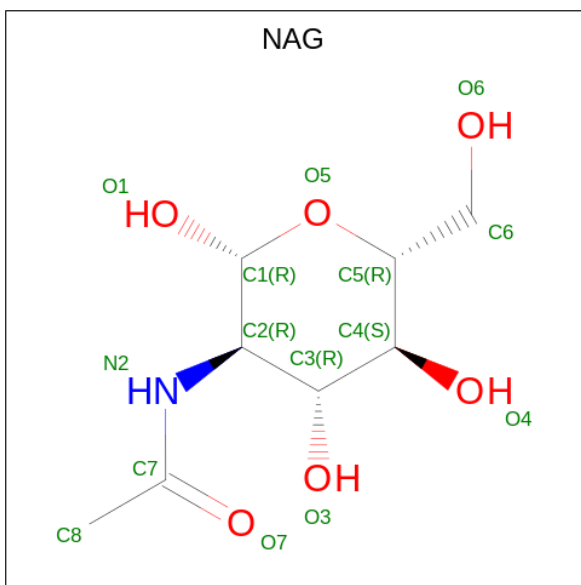
Chain	Residue	Modelled	Actual	Comment	Reference
G	-2	ALA	-	expression tag	UNP Q9ST12
G	-1	ALA	-	expression tag	UNP Q9ST12

Continued on next page...

Continued from previous page...

Chain	Residue	Modelled	Actual	Comment	Reference
G	55	ALA	-	expression tag	UNP Q9ST12
G	56	ALA	-	expression tag	UNP Q9ST12
H	-2	ALA	-	expression tag	UNP Q9ST12
H	-1	ALA	-	expression tag	UNP Q9ST12
H	55	ALA	-	expression tag	UNP Q9ST12
H	56	ALA	-	expression tag	UNP Q9ST12

- Molecule 3 is 2-acetamido-2-deoxy-beta-D-glucopyranose (three-letter code: NAG) (formula: $C_8H_{15}NO_6$).



Mol	Chain	Residues	Atoms			ZeroOcc	AltConf	
			Total	C	N			O
3	G	1	14	8	1	5	0	0
3	H	1	14	8	1	5	0	0

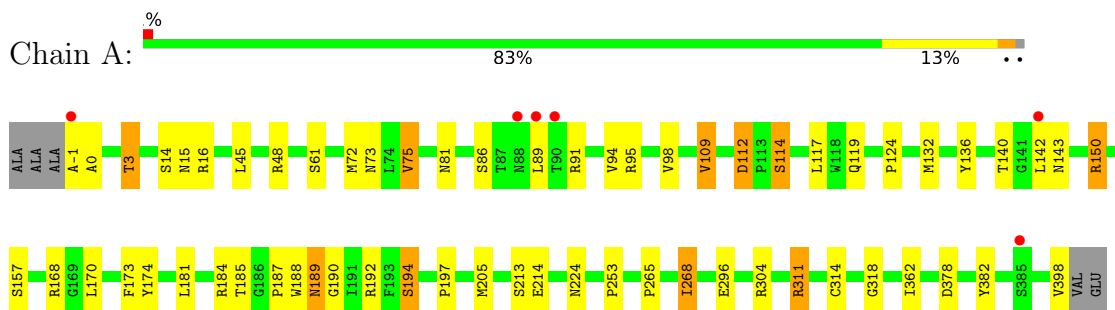
- Molecule 4 is water.

Mol	Chain	Residues	Atoms		ZeroOcc	AltConf
4	A	162	Total	O	0	0
			162	162		
4	B	197	Total	O	0	0
			197	197		
4	G	30	Total	O	0	0
			30	30		
4	H	17	Total	O	0	0
			17	17		

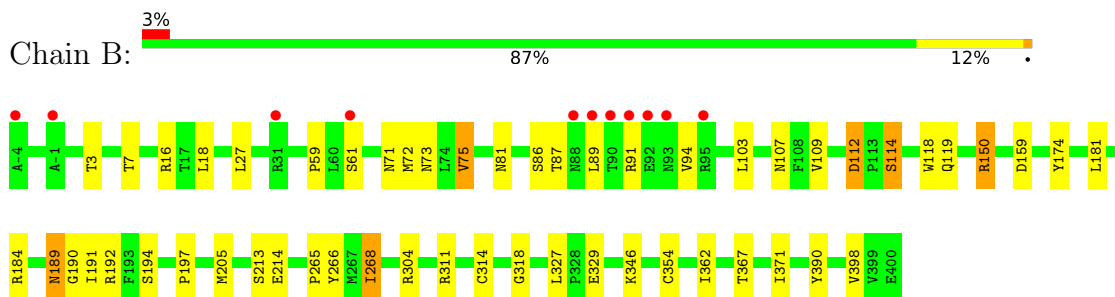
3 Residue-property plots [i](#)

These plots are drawn for all protein, RNA, DNA and oligosaccharide chains in the entry. The first graphic for a chain summarises the proportions of the various outlier classes displayed in the second graphic. The second graphic shows the sequence view annotated by issues in geometry and electron density. Residues are color-coded according to the number of geometric quality criteria for which they contain at least one outlier: green = 0, yellow = 1, orange = 2 and red = 3 or more. A red dot above a residue indicates a poor fit to the electron density ($RSRZ > 2$). Stretches of 2 or more consecutive residues without any outlier are shown as a green connector. Residues present in the sample, but not in the model, are shown in grey.

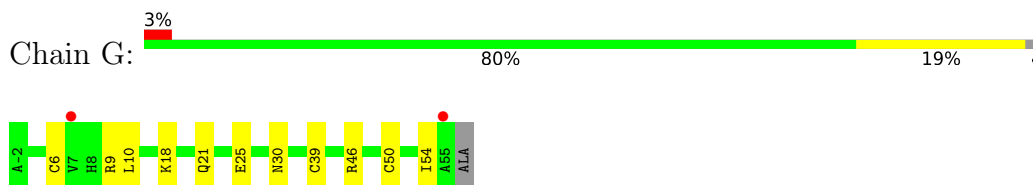
- Molecule 1: S-receptor kinase SRK9



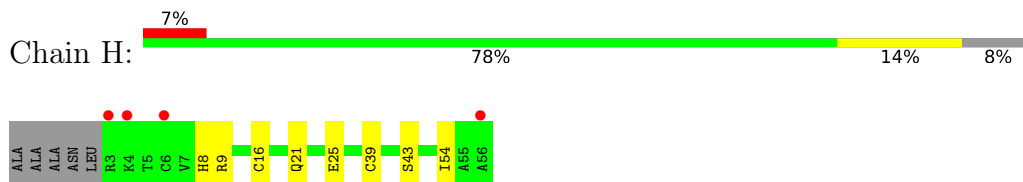
- Molecule 1: S-receptor kinase SRK9



- Molecule 2: S-locus protein 11



- Molecule 2: S-locus protein 11



4 Data and refinement statistics

Property	Value	Source
Space group	P 21 21 21	Depositor
Cell constants a, b, c, α , β , γ	62.25Å 135.12Å 153.91Å 90.00° 90.00° 90.00°	Depositor
Resolution (Å)	39.59 – 2.35 39.59 – 2.35	Depositor EDS
% Data completeness (in resolution range)	93.9 (39.59-2.35) 93.7 (39.59-2.35)	Depositor EDS
R_{merge}	(Not available)	Depositor
R_{sym}	(Not available)	Depositor
$\langle I/\sigma(I) \rangle$ ¹	6.26 (at 2.34Å)	Xtrriage
Refinement program	PHENIX 1.8_1069	Depositor
R, R_{free}	0.196 , 0.254 0.197 , 0.254	Depositor DCC
R_{free} test set	2781 reflections (5.04%)	wwPDB-VP
Wilson B-factor (Å ²)	31.4	Xtrriage
Anisotropy	1.084	Xtrriage
Bulk solvent k_{sol} (e/Å ³), B_{sol} (Å ²)	0.31 , 33.7	EDS
L-test for twinning ²	$\langle L \rangle = 0.47$, $\langle L^2 \rangle = 0.30$	Xtrriage
Estimated twinning fraction	No twinning to report.	Xtrriage
F_o, F_c correlation	0.94	EDS
Total number of atoms	7701	wwPDB-VP
Average B, all atoms (Å ²)	24.0	wwPDB-VP

Xtrriage's analysis on translational NCS is as follows: *The largest off-origin peak in the Patterson function is 3.05% of the height of the origin peak. No significant pseudotranslation is detected.*

¹Intensities estimated from amplitudes.

²Theoretical values of $\langle |L| \rangle$, $\langle L^2 \rangle$ for acentric reflections are 0.5, 0.333 respectively for untwinned datasets, and 0.375, 0.2 for perfectly twinned datasets.

5 Model quality [i](#)

5.1 Standard geometry [i](#)

Bond lengths and bond angles in the following residue types are not validated in this section: NAG

The Z score for a bond length (or angle) is the number of standard deviations the observed value is removed from the expected value. A bond length (or angle) with $|Z| > 5$ is considered an outlier worth inspection. RMSZ is the root-mean-square of all Z scores of the bond lengths (or angles).

Mol	Chain	Bond lengths		Bond angles	
		RMSZ	# Z >5	RMSZ	# Z >5
1	A	0.41	0/3268	0.62	1/4441 (0.0%)
1	B	0.42	0/3299	0.62	1/4484 (0.0%)
2	G	0.48	0/450	0.58	0/604
2	H	0.44	0/424	0.68	0/568
All	All	0.42	0/7441	0.62	2/10097 (0.0%)

There are no bond length outliers.

All (2) bond angle outliers are listed below:

Mol	Chain	Res	Type	Atoms	Z	Observed(°)	Ideal(°)
1	B	189	ASN	N-CA-C	5.91	126.95	111.00
1	A	189	ASN	N-CA-C	5.82	126.72	111.00

There are no chirality outliers.

There are no planarity outliers.

5.2 Too-close contacts [i](#)

In the following table, the Non-H and H(model) columns list the number of non-hydrogen atoms and hydrogen atoms in the chain respectively. The H(added) column lists the number of hydrogen atoms added and optimized by MolProbity. The Clashes column lists the number of clashes within the asymmetric unit, whereas Symm-Clashes lists symmetry-related clashes.

Mol	Chain	Non-H	H(model)	H(added)	Clashes	Symm-Clashes
1	A	3189	0	3085	40	0
1	B	3220	0	3115	29	0
2	G	442	0	413	9	0
2	H	416	0	383	5	0
3	G	14	0	13	0	0

Continued on next page...

Continued from previous page...

Mol	Chain	Non-H	H(model)	H(added)	Clashes	Symm-Clashes
3	H	14	0	13	0	0
4	A	162	0	0	10	0
4	B	197	0	0	7	0
4	G	30	0	0	1	0
4	H	17	0	0	0	0
All	All	7701	0	7022	82	0

The all-atom clashscore is defined as the number of clashes found per 1000 atoms (including hydrogen atoms). The all-atom clashscore for this structure is 6.

All (82) close contacts within the same asymmetric unit are listed below, sorted by their clash magnitude.

Atom-1	Atom-2	Interatomic distance (Å)	Clash overlap (Å)
1:A:45:LEU:O	4:A:501:HOH:O	1.98	0.81
1:A:15:ASN:ND2	4:A:502:HOH:O	2.18	0.75
1:B:304:ARG:NH1	4:B:501:HOH:O	2.18	0.75
1:B:112:ASP:HB3	1:B:114:SER:H	1.53	0.74
1:B:346:LYS:NZ	4:B:503:HOH:O	2.23	0.71
1:A:112:ASP:HB3	1:A:114:SER:H	1.57	0.68
1:B:192:ARG:HD3	1:B:197:PRO:HA	1.77	0.66
1:B:71:ASN:ND2	4:B:505:HOH:O	2.29	0.65
1:A:109:VAL:HG22	1:A:119:GLN:HG2	1.80	0.64
1:A:192:ARG:HD3	1:A:197:PRO:HA	1.81	0.62
1:B:266:TYR:OH	1:B:329:GLU:OE1	2.19	0.61
2:H:21:GLN:HG2	2:H:39:CYS:O	1.99	0.61
1:A:75:VAL:HG23	1:A:86:SER:HB3	1.81	0.61
1:B:91:ARG:NH2	1:B:114:SER:OG	2.34	0.60
1:A:150:ARG:NH1	1:A:157:SER:O	2.35	0.59
1:A:95:ARG:NH1	4:A:512:HOH:O	2.35	0.58
1:A:0:ALA:HB3	1:A:3:THR:HB	1.85	0.58
1:A:140:THR:HG23	1:A:142:LEU:H	1.69	0.57
1:B:109:VAL:HG22	1:B:119:GLN:HG2	1.86	0.57
1:A:-1:ALA:HA	4:A:645:HOH:O	2.03	0.57
1:B:189:ASN:N	1:B:190:GLY:HA2	2.20	0.57
1:B:174:TYR:CD1	1:B:181:LEU:HD21	2.41	0.56
1:A:189:ASN:N	1:A:190:GLY:HA2	2.21	0.55
1:A:174:TYR:HD1	1:A:181:LEU:HD21	1.72	0.54
1:A:224:ASN:ND2	4:A:515:HOH:O	2.39	0.53
1:B:72:MET:O	1:B:89:LEU:HD11	2.08	0.53
2:G:21:GLN:HG2	2:G:39:CYS:O	2.10	0.51
2:G:46:ARG:HH11	2:G:46:ARG:HG2	1.75	0.51

Continued on next page...

Continued from previous page...

Atom-1	Atom-2	Interatomic distance (Å)	Clash overlap (Å)
1:B:75:VAL:HG23	1:B:86:SER:HB3	1.93	0.51
2:G:9:ARG:NH1	4:G:1104:HOH:O	2.41	0.50
1:B:174:TYR:OH	1:B:329:GLU:OE2	2.23	0.50
1:A:168:ARG:HG3	1:A:170:LEU:O	2.12	0.50
2:G:25:GLU:HG3	2:G:39:CYS:HB2	1.92	0.50
2:H:8:HIS:HB2	2:H:54:ILE:HD13	1.94	0.50
1:A:73:ASN:ND2	4:A:505:HOH:O	2.44	0.49
1:A:174:TYR:CD1	1:A:181:LEU:HD21	2.47	0.49
1:B:181:LEU:HD22	1:B:266:TYR:CD2	2.46	0.49
1:A:48:ARG:NH2	4:A:507:HOH:O	2.32	0.48
1:B:87:THR:HG22	1:B:118:TRP:CE2	2.49	0.48
1:A:72:MET:HB3	1:A:98:VAL:HG21	1.96	0.48
1:A:197:PRO:HG3	1:A:382:TYR:CE1	2.48	0.48
1:B:73:ASN:ND2	4:B:517:HOH:O	2.47	0.48
1:A:296:GLU:OE1	1:A:304:ARG:HD2	2.13	0.48
1:A:14:SER:OG	1:A:16:ARG:HB2	2.14	0.47
2:G:18:LYS:HE2	2:G:18:LYS:HB2	1.70	0.47
1:B:103:LEU:HD12	1:B:107:ASN:HB3	1.96	0.47
2:H:16:CYS:SG	2:H:43:SER:HB2	2.55	0.47
1:A:265:PRO:O	1:A:268:ILE:HG13	2.15	0.46
1:A:75:VAL:HG23	1:A:86:SER:CB	2.46	0.46
2:G:6:CYS:HB3	2:G:54:ILE:HG13	1.97	0.46
1:B:184:ARG:NH2	1:B:327:LEU:O	2.37	0.46
1:A:189:ASN:H	1:A:190:GLY:HA2	1.81	0.46
4:A:546:HOH:O	2:H:9:ARG:HD3	2.15	0.46
2:H:25:GLU:HG3	2:H:39:CYS:HB2	1.96	0.46
1:B:150:ARG:NH2	1:B:159:ASP:OD1	2.40	0.45
1:B:318:GLY:HA3	1:B:398:VAL:HG21	1.97	0.45
1:A:184:ARG:HD3	1:A:378:ASP:OD2	2.16	0.45
1:B:367:THR:HB	4:B:614:HOH:O	2.17	0.45
1:B:59:PRO:HG3	4:B:512:HOH:O	2.16	0.45
1:A:173:PHE:HB2	1:A:185:THR:HB	1.99	0.44
1:A:311:ARG:NH2	4:A:526:HOH:O	2.51	0.44
2:G:10:LEU:HB2	2:G:50:CYS:HB2	2.00	0.44
1:A:136:TYR:CE1	1:A:143:ASN:HB2	2.53	0.44
1:B:390:TYR:OH	4:B:502:HOH:O	2.20	0.44
1:A:318:GLY:HA3	1:A:398:VAL:HG21	1.99	0.43
1:B:18:LEU:HD12	1:B:27:LEU:HD22	1.99	0.43
1:B:265:PRO:O	1:B:268:ILE:HG13	2.17	0.43
1:A:89:LEU:HA	4:A:529:HOH:O	2.17	0.43
1:A:89:LEU:HD13	1:A:117:LEU:HD13	2.01	0.42

Continued on next page...

Continued from previous page...

Atom-1	Atom-2	Interatomic distance (Å)	Clash overlap (Å)
1:A:124:PRO:HB3	1:A:132:MET:HE3	2.01	0.42
1:B:354:CYS:SG	1:B:371:ILE:HG23	2.60	0.42
1:A:188:TRP:NE1	1:A:190:GLY:HA3	2.35	0.42
1:A:253:PRO:HG3	2:G:46:ARG:HH12	1.84	0.42
1:A:89:LEU:HA	1:A:89:LEU:HD23	1.83	0.41
1:A:89:LEU:HD22	1:A:117:LEU:HB3	2.02	0.41
1:B:174:TYR:CE1	1:B:181:LEU:HD21	2.56	0.41
1:A:189:ASN:O	1:A:362:ILE:N	2.51	0.41
1:A:91:ARG:HH22	1:A:112:ASP:HB2	1.86	0.40
1:B:191:ILE:HD12	1:B:362:ILE:HD11	2.04	0.40
1:B:311:ARG:HD2	1:B:311:ARG:HA	1.74	0.40
2:G:46:ARG:HG2	2:G:46:ARG:NH1	2.35	0.40
1:A:187:PRO:HD2	1:A:194:SER:HB2	2.02	0.40

There are no symmetry-related clashes.

5.3 Torsion angles [i](#)

5.3.1 Protein backbone [i](#)

In the following table, the Percentiles column shows the percent Ramachandran outliers of the chain as a percentile score with respect to all X-ray entries followed by that with respect to entries of similar resolution.

The Analysed column shows the number of residues for which the backbone conformation was analysed, and the total number of residues.

Mol	Chain	Analysed	Favoured	Allowed	Outliers	Percentiles	
1	A	398/405 (98%)	375 (94%)	21 (5%)	2 (0%)	25	28
1	B	403/405 (100%)	383 (95%)	18 (4%)	2 (0%)	25	28
2	G	56/59 (95%)	55 (98%)	1 (2%)	0	100	100
2	H	52/59 (88%)	50 (96%)	2 (4%)	0	100	100
All	All	909/928 (98%)	863 (95%)	42 (5%)	4 (0%)	30	34

All (4) Ramachandran outliers are listed below:

Mol	Chain	Res	Type
1	A	314	CYS
1	B	314	CYS

Continued on next page...

Continued from previous page...

Mol	Chain	Res	Type
1	A	81	ASN
1	B	81	ASN

5.3.2 Protein sidechains [i](#)

In the following table, the Percentiles column shows the percent sidechain outliers of the chain as a percentile score with respect to all X-ray entries followed by that with respect to entries of similar resolution.

The Analysed column shows the number of residues for which the sidechain conformation was analysed, and the total number of residues.

Mol	Chain	Analysed	Rotameric	Outliers	Percentiles
1	A	358/360 (99%)	344 (96%)	14 (4%)	27 36
1	B	360/360 (100%)	346 (96%)	14 (4%)	27 36
2	G	47/47 (100%)	46 (98%)	1 (2%)	48 61
2	H	45/47 (96%)	45 (100%)	0	100 100
All	All	810/814 (100%)	781 (96%)	29 (4%)	30 39

All (29) residues with a non-rotameric sidechain are listed below:

Mol	Chain	Res	Type
1	A	3	THR
1	A	61	SER
1	A	75	VAL
1	A	94	VAL
1	A	109	VAL
1	A	112	ASP
1	A	114	SER
1	A	150	ARG
1	A	194	SER
1	A	205	MET
1	A	213	SER
1	A	214	GLU
1	A	268	ILE
1	A	311	ARG
1	B	3	THR
1	B	7	THR
1	B	16	ARG
1	B	61	SER
1	B	75	VAL

Continued on next page...

Continued from previous page...

Mol	Chain	Res	Type
1	B	94	VAL
1	B	112	ASP
1	B	114	SER
1	B	150	ARG
1	B	194	SER
1	B	205	MET
1	B	213	SER
1	B	214	GLU
1	B	268	ILE
2	G	30	ASN

Sometimes sidechains can be flipped to improve hydrogen bonding and reduce clashes. All (1) such sidechains are listed below:

Mol	Chain	Res	Type
1	B	71	ASN

5.3.3 RNA [i](#)

There are no RNA molecules in this entry.

5.4 Non-standard residues in protein, DNA, RNA chains [i](#)

There are no non-standard protein/DNA/RNA residues in this entry.

5.5 Carbohydrates [i](#)

There are no oligosaccharides in this entry.

5.6 Ligand geometry [i](#)

2 ligands are modelled in this entry.

In the following table, the Counts columns list the number of bonds (or angles) for which Mogul statistics could be retrieved, the number of bonds (or angles) that are observed in the model and the number of bonds (or angles) that are defined in the Chemical Component Dictionary. The Link column lists molecule types, if any, to which the group is linked. The Z score for a bond length (or angle) is the number of standard deviations the observed value is removed from the expected value. A bond length (or angle) with $|Z| > 2$ is considered an outlier worth inspection. RMSZ is the root-mean-square of all Z scores of the bond lengths (or angles).

Mol	Type	Chain	Res	Link	Bond lengths			Bond angles		
					Counts	RMSZ	# Z > 2	Counts	RMSZ	# Z > 2
3	NAG	H	1000	2	14,14,15	0.44	0	17,19,21	0.82	1 (5%)
3	NAG	G	1000	2	14,14,15	0.65	0	17,19,21	1.36	3 (17%)

In the following table, the Chirals column lists the number of chiral outliers, the number of chiral centers analysed, the number of these observed in the model and the number defined in the Chemical Component Dictionary. Similar counts are reported in the Torsion and Rings columns. '-' means no outliers of that kind were identified.

Mol	Type	Chain	Res	Link	Chirals	Torsions	Rings
3	NAG	H	1000	2	-	0/6/23/26	0/1/1/1
3	NAG	G	1000	2	-	0/6/23/26	0/1/1/1

There are no bond length outliers.

All (4) bond angle outliers are listed below:

Mol	Chain	Res	Type	Atoms	Z	Observed(°)	Ideal(°)
3	G	1000	NAG	C1-C2-N2	-2.51	106.20	110.49
3	H	1000	NAG	C1-O5-C5	2.25	115.25	112.19
3	G	1000	NAG	C3-C4-C5	-2.23	106.26	110.24
3	G	1000	NAG	C6-C5-C4	2.21	118.19	113.00

There are no chirality outliers.

There are no torsion outliers.

There are no ring outliers.

No monomer is involved in short contacts.

5.7 Other polymers [i](#)

There are no such residues in this entry.

5.8 Polymer linkage issues [i](#)

There are no chain breaks in this entry.

6 Fit of model and data [i](#)

6.1 Protein, DNA and RNA chains [i](#)

In the following table, the column labelled ‘#RSRZ > 2’ contains the number (and percentage) of RSRZ outliers, followed by percent RSRZ outliers for the chain as percentile scores relative to all X-ray entries and entries of similar resolution. The OWAB column contains the minimum, median, 95th percentile and maximum values of the occupancy-weighted average B-factor per residue. The column labelled ‘Q < 0.9’ lists the number of (and percentage) of residues with an average occupancy less than 0.9.

Mol	Chain	Analysed	<RSRZ>	#RSRZ>2	OWAB(Å ²)	Q<0.9
1	A	400/405 (98%)	-0.03	6 (1%) 71 76	7, 23, 46, 88	0
1	B	405/405 (100%)	-0.05	11 (2%) 56 62	6, 18, 44, 137	0
2	G	58/59 (98%)	0.18	2 (3%) 48 54	8, 22, 48, 57	0
2	H	54/59 (91%)	0.27	4 (7%) 22 26	10, 27, 53, 96	0
All	All	917/928 (98%)	-0.01	23 (2%) 58 64	6, 21, 46, 137	0

All (23) RSRZ outliers are listed below:

Mol	Chain	Res	Type	RSRZ
1	B	-4	ALA	5.9
1	B	89	LEU	5.5
1	B	90	THR	5.2
2	G	55	ALA	4.3
1	B	31	ARG	3.9
1	B	91	ARG	3.7
1	A	90	THR	3.3
1	B	88	ASN	3.0
2	G	7	VAL	2.8
1	B	95	ARG	2.6
1	B	93	ASN	2.5
1	A	142	LEU	2.4
1	B	-1	ALA	2.4
2	H	4	LYS	2.4
1	A	-1	ALA	2.3
1	B	61	SER	2.2
1	A	385	SER	2.1
1	B	92	GLU	2.1
1	A	88	ASN	2.1
1	A	89	LEU	2.1
2	H	56	ALA	2.1

Continued on next page...

Continued from previous page...

Mol	Chain	Res	Type	RSRZ
2	H	3	ARG	2.0
2	H	6	CYS	2.0

6.2 Non-standard residues in protein, DNA, RNA chains [i](#)

There are no non-standard protein/DNA/RNA residues in this entry.

6.3 Carbohydrates [i](#)

There are no monosaccharides in this entry.

6.4 Ligands [i](#)

In the following table, the Atoms column lists the number of modelled atoms in the group and the number defined in the chemical component dictionary. The B-factors column lists the minimum, median, 95th percentile and maximum values of B factors of atoms in the group. The column labelled 'Q < 0.9' lists the number of atoms with occupancy less than 0.9.

Mol	Type	Chain	Res	Atoms	RSCC	RSR	B-factors(Å ²)	Q < 0.9
3	NAG	G	1000	14/15	0.73	0.15	20,31,37,38	0
3	NAG	H	1000	14/15	0.77	0.11	41,51,57,59	0

6.5 Other polymers [i](#)

There are no such residues in this entry.