



Full wwPDB X-ray Structure Validation Report ⓘ

Apr 21, 2024 – 05:35 pm BST

PDB ID : 5G1U
Title : Linalool Dehydratase Isomerase in complex with Geraniol
Authors : Chambers, S.; Hau, A.; Man, H.; Omar, M.; Turkenburg, J.P.; Grogan, G.
Deposited on : 2016-03-30
Resolution : 2.57 Å(reported)

This is a Full wwPDB X-ray Structure Validation Report for a publicly released PDB entry.

We welcome your comments at validation@mail.wwpdb.org

A user guide is available at

<https://www.wwpdb.org/validation/2017/XrayValidationReportHelp>

with specific help available everywhere you see the ⓘ symbol.

The types of validation reports are described at

<http://www.wwpdb.org/validation/2017/FAQs#types>.

The following versions of software and data (see [references ⓘ](#)) were used in the production of this report:

MolProbity : 4.02b-467
Mogul : 1.8.4, CSD as541be (2020)
Xtrriage (Phenix) : 1.13
EDS : 2.36.2
Percentile statistics : 20191225.v01 (using entries in the PDB archive December 25th 2019)
Refmac : 5.8.0158
CCP4 : 7.0.044 (Gargrove)
Ideal geometry (proteins) : Engh & Huber (2001)
Ideal geometry (DNA, RNA) : Parkinson et al. (1996)
Validation Pipeline (wwPDB-VP) : 2.36.2

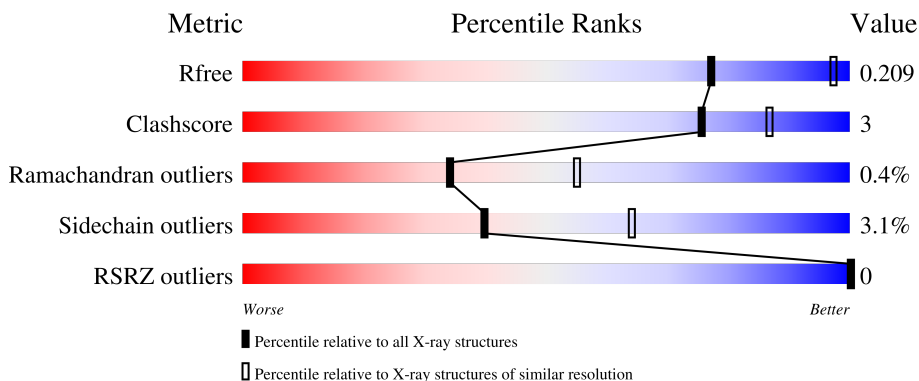
1 Overall quality at a glance

The following experimental techniques were used to determine the structure:

X-RAY DIFFRACTION

The reported resolution of this entry is 2.57 Å.

Percentile scores (ranging between 0-100) for global validation metrics of the entry are shown in the following graphic. The table shows the number of entries on which the scores are based.



Metric	Whole archive (#Entries)	Similar resolution (#Entries, resolution range(Å))
R_{free}	130704	3676 (2.60-2.56)
Clashscore	141614	4049 (2.60-2.56)
Ramachandran outliers	138981	3979 (2.60-2.56)
Sidechain outliers	138945	3979 (2.60-2.56)
RSRZ outliers	127900	3614 (2.60-2.56)

The table below summarises the geometric issues observed across the polymeric chains and their fit to the electron density. The red, orange, yellow and green segments of the lower bar indicate the fraction of residues that contain outliers for ≥ 3 , 2, 1 and 0 types of geometric quality criteria respectively. A grey segment represents the fraction of residues that are not modelled. The numeric value for each fraction is indicated below the corresponding segment, with a dot representing fractions $\leq 5\%$. The upper red bar (where present) indicates the fraction of residues that have poor fit to the electron density. The numeric value is given above the bar.

Mol	Chain	Length	Quality of chain
1	A	372	 87% 9% ..
1	B	372	 89% 8% ..
1	C	372	 89% 8% ...
1	D	372	 88% 7% ..
1	E	372	 88% 9% ..

The following table lists non-polymeric compounds, carbohydrate monomers and non-standard residues in protein, DNA, RNA chains that are outliers for geometric or electron-density-fit criteria:

Mol	Type	Chain	Res	Chirality	Geometry	Clashes	Electron density
2	64Z	E	1366	-	X	-	-

2 Entry composition

There are 3 unique types of molecules in this entry. The entry contains 15138 atoms, of which 0 are hydrogens and 0 are deuteriums.

In the tables below, the ZeroOcc column contains the number of atoms modelled with zero occupancy, the AltConf column contains the number of residues with at least one atom in alternate conformation and the Trace column contains the number of residues modelled with at most 2 atoms.

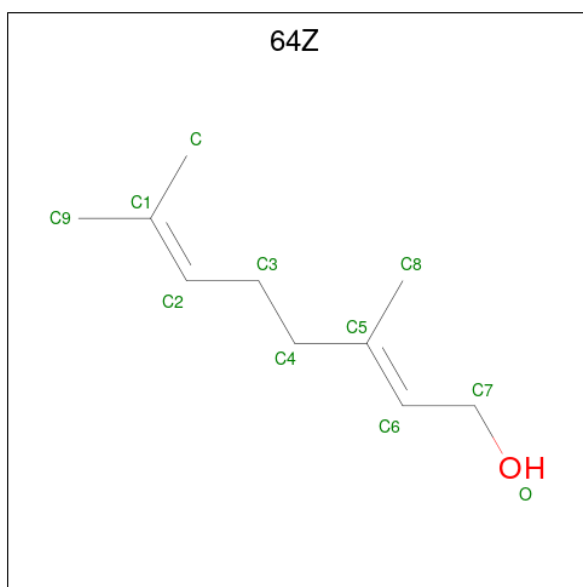
- Molecule 1 is a protein called LINALOOL DEHYDRATASE/ISOMERASE.

Mol	Chain	Residues	Atoms						ZeroOcc	AltConf	Trace
			Total	C	N	O	S	Se			
1	A	362	2857	1850	473	521	4	9	0	0	0
1	B	364	2874	1858	479	524	4	9	0	0	0
1	C	363	2862	1853	472	524	4	9	0	0	0
1	D	362	2867	1854	479	521	4	9	0	0	0
1	E	362	2862	1853	476	520	4	9	0	0	0

There are 5 discrepancies between the modelled and reference sequences:

Chain	Residue	Modelled	Actual	Comment	Reference
A	1	MSE	-	expression tag	UNP E1XUJ2
B	1	MSE	-	expression tag	UNP E1XUJ2
C	1	MSE	-	expression tag	UNP E1XUJ2
D	1	MSE	-	expression tag	UNP E1XUJ2
E	1	MSE	-	expression tag	UNP E1XUJ2

- Molecule 2 is Geraniol (three-letter code: 64Z) (formula: C₁₀H₁₈O).



Mol	Chain	Residues	Atoms			ZeroOcc	AltConf
2	A	1	Total	C	O	0	0
			11	10	1		
2	B	1	Total	C	O	0	0
			11	10	1		
2	C	1	Total	C	O	0	0
			11	10	1		
2	D	1	Total	C	O	0	0
			11	10	1		
2	E	1	Total	C	O	0	0
			11	10	1		

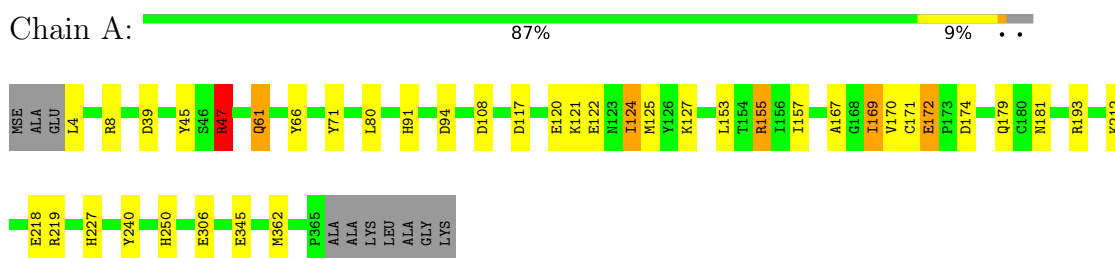
- Molecule 3 is water.

Mol	Chain	Residues	Atoms		ZeroOcc	AltConf
3	A	152	Total	O	0	0
			152	152		
3	B	180	Total	O	0	0
			180	180		
3	C	160	Total	O	0	0
			160	160		
3	D	146	Total	O	0	0
			146	146		
3	E	123	Total	O	0	0
			123	123		

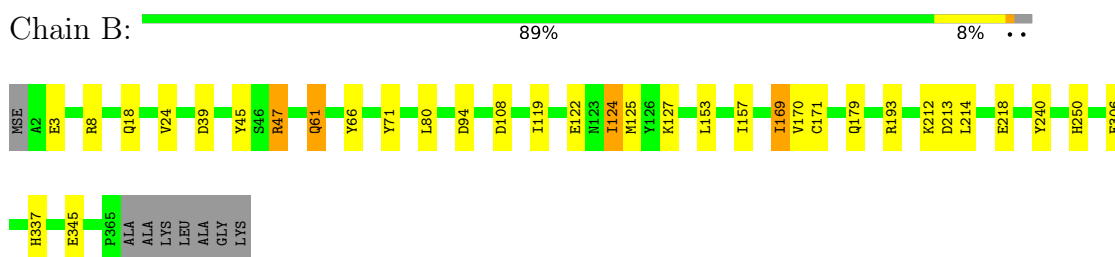
3 Residue-property plots [i](#)

These plots are drawn for all protein, RNA, DNA and oligosaccharide chains in the entry. The first graphic for a chain summarises the proportions of the various outlier classes displayed in the second graphic. The second graphic shows the sequence view annotated by issues in geometry and electron density. Residues are color-coded according to the number of geometric quality criteria for which they contain at least one outlier: green = 0, yellow = 1, orange = 2 and red = 3 or more. A red dot above a residue indicates a poor fit to the electron density ($RSRZ > 2$). Stretches of 2 or more consecutive residues without any outlier are shown as a green connector. Residues present in the sample, but not in the model, are shown in grey.

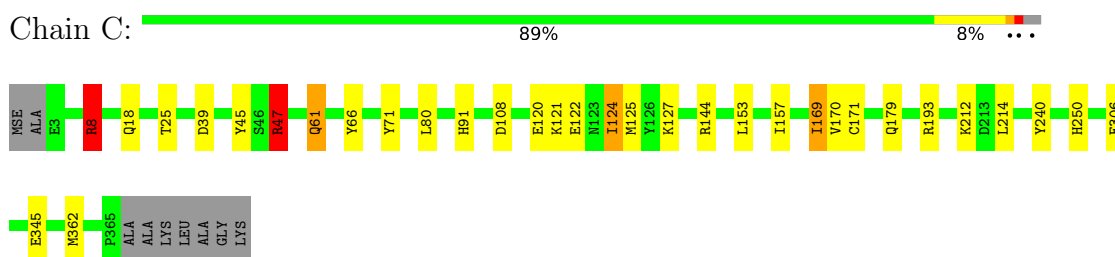
- Molecule 1: LINALOOL DEHYDRATASE/ISOMERASE



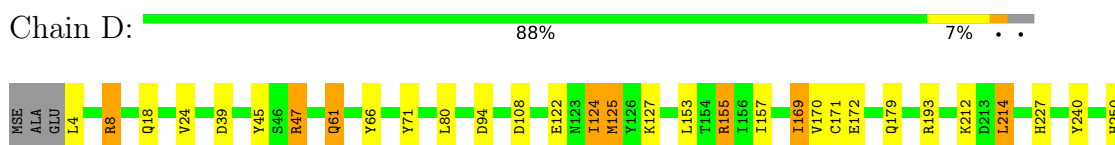
- Molecule 1: LINALOOL DEHYDRATASE/ISOMERASE

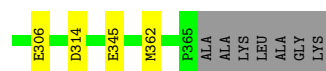


- Molecule 1: LINALOOL DEHYDRATASE/ISOMERASE



- Molecule 1: LINALOOL DEHYDRATASE/ISOMERASE





● Molecule 1: LINALOOL DEHYDRATASE/ISOMERASE

Chain E: 88% 9% ..



4 Data and refinement statistics

Property	Value	Source
Space group	P 21 21 21	Depositor
Cell constants a, b, c, α , β , γ	99.80Å 106.04Å 220.51Å 90.00° 90.00° 90.00°	Depositor
Resolution (Å)	90.92 – 2.57 90.92 – 2.26	Depositor EDS
% Data completeness (in resolution range)	100.0 (90.92-2.57) 100.0 (90.92-2.26)	Depositor EDS
R_{merge}	0.15	Depositor
R_{sym}	(Not available)	Depositor
$\langle I/\sigma(I) \rangle$ ¹	1.58 (at 2.27Å)	Xtrriage
Refinement program	REFMAC 5.8.0131	Depositor
R, R_{free}	0.161 , 0.198 0.175 , 0.209	Depositor DCC
R_{free} test set	5571 reflections (5.06%)	wwPDB-VP
Wilson B-factor (Å ²)	36.1	Xtrriage
Anisotropy	0.597	Xtrriage
Bulk solvent k_{sol} (e/Å ³), B_{sol} (Å ²)	0.34 , 27.3	EDS
L-test for twinning ²	$\langle L \rangle = 0.47$, $\langle L^2 \rangle = 0.30$	Xtrriage
Estimated twinning fraction	No twinning to report.	Xtrriage
F_o, F_c correlation	0.95	EDS
Total number of atoms	15138	wwPDB-VP
Average B, all atoms (Å ²)	41.0	wwPDB-VP

Xtrriage's analysis on translational NCS is as follows: *The largest off-origin peak in the Patterson function is 4.68% of the height of the origin peak. No significant pseudotranslation is detected.*

¹Intensities estimated from amplitudes.

²Theoretical values of $\langle |L| \rangle$, $\langle L^2 \rangle$ for acentric reflections are 0.5, 0.333 respectively for untwinned datasets, and 0.375, 0.2 for perfectly twinned datasets.

5 Model quality i

5.1 Standard geometry i

Bond lengths and bond angles in the following residue types are not validated in this section: 64Z

The Z score for a bond length (or angle) is the number of standard deviations the observed value is removed from the expected value. A bond length (or angle) with $|Z| > 5$ is considered an outlier worth inspection. RMSZ is the root-mean-square of all Z scores of the bond lengths (or angles).

Mol	Chain	Bond lengths		Bond angles	
		RMSZ	# Z >5	RMSZ	# Z >5
1	A	0.63	0/2934	0.84	7/3983 (0.2%)
1	B	0.63	0/2951	0.86	5/4005 (0.1%)
1	C	0.64	0/2939	0.83	5/3990 (0.1%)
1	D	0.62	0/2944	0.83	6/3995 (0.2%)
1	E	0.61	0/2939	0.86	7/3988 (0.2%)
All	All	0.63	0/14707	0.84	30/19961 (0.2%)

There are no bond length outliers.

All (30) bond angle outliers are listed below:

Mol	Chain	Res	Type	Atoms	Z	Observed(°)	Ideal(°)
1	E	263	ARG	NE-CZ-NH1	11.67	126.14	120.30
1	A	8	ARG	NE-CZ-NH2	-9.08	115.76	120.30
1	C	8	ARG	NE-CZ-NH2	-9.02	115.79	120.30
1	B	8	ARG	NE-CZ-NH2	-8.75	115.92	120.30
1	D	155	ARG	NE-CZ-NH1	8.69	124.65	120.30
1	D	8	ARG	NE-CZ-NH2	-8.64	115.98	120.30
1	E	8	ARG	NE-CZ-NH2	-8.45	116.08	120.30
1	E	8	ARG	NE-CZ-NH1	8.22	124.41	120.30
1	C	8	ARG	NE-CZ-NH1	8.04	124.32	120.30
1	A	8	ARG	NE-CZ-NH1	7.96	124.28	120.30
1	E	276	ARG	CG-CD-NE	7.67	127.92	111.80
1	D	8	ARG	NE-CZ-NH1	7.51	124.06	120.30
1	B	8	ARG	NE-CZ-NH1	7.43	124.02	120.30
1	C	47	ARG	NE-CZ-NH1	7.04	123.82	120.30
1	A	47	ARG	NE-CZ-NH2	-6.55	117.02	120.30
1	A	155	ARG	NE-CZ-NH1	6.02	123.31	120.30
1	E	155	ARG	NE-CZ-NH1	5.88	123.24	120.30
1	A	121	LYS	N-CA-C	-5.85	95.20	111.00
1	C	144	ARG	NE-CZ-NH1	5.76	123.18	120.30

Continued on next page...

Continued from previous page...

Mol	Chain	Res	Type	Atoms	Z	Observed(°)	Ideal(°)
1	C	121	LYS	N-CA-C	-5.74	95.50	111.00
1	D	125	MSE	N-CA-CB	-5.68	100.37	110.60
1	A	172	GLU	CG-CD-OE2	-5.67	106.97	118.30
1	E	263	ARG	NE-CZ-NH2	-5.54	117.53	120.30
1	D	155	ARG	CB-CG-CD	5.48	125.84	111.60
1	B	212	LYS	N-CA-C	-5.31	96.65	111.00
1	B	193	ARG	NE-CZ-NH1	5.15	122.87	120.30
1	B	213	ASP	N-CA-C	5.09	124.75	111.00
1	A	117	ASP	CB-CG-OD1	5.09	122.88	118.30
1	E	117	ASP	CB-CG-OD1	5.08	122.87	118.30
1	D	214	LEU	CA-CB-CG	5.07	126.95	115.30

There are no chirality outliers.

There are no planarity outliers.

5.2 Too-close contacts

In the following table, the Non-H and H(model) columns list the number of non-hydrogen atoms and hydrogen atoms in the chain respectively. The H(added) column lists the number of hydrogen atoms added and optimized by MolProbity. The Clashes column lists the number of clashes within the asymmetric unit, whereas Symm-Clashes lists symmetry-related clashes.

Mol	Chain	Non-H	H(model)	H(added)	Clashes	Symm-Clashes
1	A	2857	0	2722	22	0
1	B	2874	0	2746	16	0
1	C	2862	0	2724	21	0
1	D	2867	0	2740	17	0
1	E	2862	0	2733	14	0
2	A	11	0	0	0	0
2	B	11	0	0	0	0
2	C	11	0	0	0	0
2	D	11	0	0	0	0
2	E	11	0	0	0	0
3	A	152	0	0	5	0
3	B	180	0	0	3	0
3	C	160	0	0	5	0
3	D	146	0	0	0	0
3	E	123	0	0	1	0
All	All	15138	0	13665	87	0

The all-atom clashscore is defined as the number of clashes found per 1000 atoms (including

hydrogen atoms). The all-atom clashscore for this structure is 3.

All (87) close contacts within the same asymmetric unit are listed below, sorted by their clash magnitude.

Atom-1	Atom-2	Interatomic distance (Å)	Clash overlap (Å)
1:A:193:ARG:NH2	1:A:362:MSE:O	2.23	0.72
1:B:125:MSE:CE	3:B:2048:HOH:O	2.41	0.69
1:D:193:ARG:NH2	1:D:362:MSE:O	2.26	0.68
1:E:193:ARG:NH2	1:E:362:MSE:O	2.27	0.68
1:A:124:ILE:HG21	1:A:169:ILE:HD13	1.74	0.68
1:C:193:ARG:NH2	1:C:362:MSE:O	2.28	0.66
1:C:125:MSE:CE	3:C:2049:HOH:O	2.46	0.64
1:A:219:ARG:CD	3:A:2099:HOH:O	2.45	0.63
1:A:169:ILE:HD12	1:A:181:ASN:OD1	1.99	0.63
1:A:218:GLU:CB	3:A:2100:HOH:O	2.47	0.61
1:A:155:ARG:NH1	3:A:2079:HOH:O	2.33	0.60
1:B:125:MSE:HE1	3:B:2048:HOH:O	2.02	0.59
1:C:250:HIS:HD2	1:C:306:GLU:OE2	1.86	0.58
1:D:250:HIS:HD2	1:D:306:GLU:OE2	1.87	0.57
1:E:250:HIS:HD2	1:E:306:GLU:OE2	1.87	0.57
1:B:250:HIS:HD2	1:B:306:GLU:OE2	1.88	0.57
1:D:124:ILE:HG22	1:D:171:CYS:HA	1.88	0.56
1:A:250:HIS:HD2	1:A:306:GLU:OE2	1.88	0.56
1:A:124:ILE:HG22	1:A:171:CYS:HA	1.87	0.55
1:B:337:HIS:HB3	3:B:2174:HOH:O	2.06	0.55
1:A:167:ALA:HA	3:A:2082:HOH:O	2.06	0.55
1:E:124:ILE:HG22	1:E:171:CYS:HA	1.89	0.55
1:C:125:MSE:HE2	3:C:2049:HOH:O	2.08	0.53
1:A:91:HIS:CE1	1:D:227:HIS:CD2	2.97	0.52
1:C:66:TYR:OH	1:C:125:MSE:HE3	2.09	0.52
1:C:125:MSE:HE1	3:C:2049:HOH:O	2.08	0.52
1:B:66:TYR:OH	1:B:125:MSE:HE3	2.10	0.52
1:B:124:ILE:HG22	1:B:171:CYS:HA	1.90	0.52
1:C:124:ILE:HG22	1:C:171:CYS:HA	1.91	0.51
1:A:66:TYR:OH	1:A:125:MSE:HE3	2.11	0.51
1:C:124:ILE:HD13	1:C:169:ILE:HD13	1.94	0.50
1:A:127:LYS:HB2	1:A:153:LEU:HD11	1.95	0.49
1:A:124:ILE:HD11	1:A:157:ILE:HG12	1.95	0.49
1:B:124:ILE:HD11	1:B:157:ILE:HG12	1.95	0.49
1:E:127:LYS:HB2	1:E:153:LEU:HD11	1.96	0.48
1:D:127:LYS:HB2	1:D:153:LEU:HD11	1.95	0.48
1:B:127:LYS:HB2	1:B:153:LEU:HD11	1.96	0.48
1:B:124:ILE:HD13	1:B:169:ILE:HD13	1.96	0.48

Continued on next page...

Continued from previous page...

Atom-1	Atom-2	Interatomic distance (Å)	Clash overlap (Å)
1:D:66:TYR:OH	1:D:125:MSE:HG2	2.14	0.47
1:C:39:ASP:HA	1:C:45:TYR:CE1	2.50	0.47
1:C:124:ILE:HD11	1:C:157:ILE:HG12	1.96	0.47
1:D:124:ILE:HD13	1:D:169:ILE:HD13	1.97	0.47
1:C:127:LYS:HB2	1:C:153:LEU:HD11	1.96	0.47
1:A:169:ILE:HG22	3:A:2083:HOH:O	2.14	0.46
1:C:61:GLN:NE2	1:C:108:ASP:HB3	2.30	0.46
1:A:174:ASP:HB2	1:C:47:ARG:NH1	2.29	0.46
1:E:39:ASP:HA	1:E:45:TYR:CE1	2.51	0.46
1:E:66:TYR:OH	1:E:125:MSE:HE3	2.15	0.46
1:D:18:GLN:HE21	1:D:24:VAL:HA	1.80	0.45
1:A:122:GLU:HB2	1:A:170:VAL:CG2	2.47	0.45
1:C:71:TYR:CZ	1:C:345:GLU:HG3	2.51	0.45
1:D:124:ILE:HD11	1:D:157:ILE:HG12	1.98	0.45
1:B:47:ARG:NH2	1:B:94:ASP:OD1	2.49	0.45
1:A:227:HIS:CD2	1:C:91:HIS:CE1	3.05	0.45
1:E:47:ARG:NH2	1:E:94:ASP:OD1	2.50	0.45
1:B:18:GLN:HE21	1:B:24:VAL:HA	1.82	0.44
1:C:169:ILE:HG22	3:C:2085:HOH:O	2.17	0.44
1:A:39:ASP:HA	1:A:45:TYR:CE1	2.52	0.44
1:E:61:GLN:NE2	1:E:108:ASP:HB3	2.32	0.44
1:D:61:GLN:NE2	1:D:108:ASP:HB3	2.33	0.44
1:E:122:GLU:HB2	1:E:170:VAL:CG2	2.48	0.44
1:D:39:ASP:HA	1:D:45:TYR:CE1	2.52	0.43
1:C:61:GLN:HE22	1:C:108:ASP:HB3	1.84	0.43
1:C:122:GLU:HB2	1:C:170:VAL:CG2	2.48	0.43
1:C:18:GLN:HE21	1:C:25:THR:H	1.67	0.43
1:D:47:ARG:NH2	1:D:94:ASP:OD1	2.52	0.43
1:A:61:GLN:NE2	1:A:108:ASP:HB3	2.33	0.43
1:B:61:GLN:NE2	1:B:108:ASP:HB3	2.34	0.43
1:D:122:GLU:HB2	1:D:170:VAL:CG2	2.49	0.42
1:A:71:TYR:CZ	1:A:345:GLU:HG3	2.55	0.42
1:A:47:ARG:NH2	1:A:94:ASP:OD1	2.53	0.42
1:D:71:TYR:CZ	1:D:345:GLU:HG3	2.55	0.42
1:B:122:GLU:HB2	1:B:170:VAL:CG2	2.50	0.42
1:E:167:ALA:HA	3:E:2064:HOH:O	2.19	0.42
1:E:18:GLN:HE21	1:E:24:VAL:HA	1.84	0.42
1:B:119:ILE:O	1:B:127:LYS:NZ	2.51	0.41
1:D:61:GLN:HE22	1:D:108:ASP:HB3	1.85	0.41
1:A:61:GLN:HE22	1:A:108:ASP:HB3	1.86	0.41
1:B:71:TYR:CZ	1:B:345:GLU:HG3	2.56	0.41

Continued on next page...

Continued from previous page...

Atom-1	Atom-2	Interatomic distance (Å)	Clash overlap (Å)
1:E:71:TYR:CZ	1:E:345:GLU:HG3	2.55	0.41
1:E:8:ARG:NH2	1:E:314:ASP:OD1	2.53	0.41
1:C:8:ARG:HD2	3:C:2004:HOH:O	2.20	0.41
1:C:124:ILE:CD1	1:C:169:ILE:HD13	2.51	0.40
1:D:8:ARG:NH2	1:D:314:ASP:OD1	2.54	0.40
1:D:125:MSE:HE1	1:D:172:GLU:OE1	2.22	0.40
1:E:121:LYS:O	1:E:122:GLU:HG2	2.21	0.40
1:B:39:ASP:HA	1:B:45:TYR:CE1	2.55	0.40

There are no symmetry-related clashes.

5.3 Torsion angles [i](#)

5.3.1 Protein backbone [i](#)

In the following table, the Percentiles column shows the percent Ramachandran outliers of the chain as a percentile score with respect to all X-ray entries followed by that with respect to entries of similar resolution.

The Analysed column shows the number of residues for which the backbone conformation was analysed, and the total number of residues.

Mol	Chain	Analysed	Favoured	Allowed	Outliers	Percentiles	
1	A	360/372 (97%)	354 (98%)	4 (1%)	2 (1%)	25	45
1	B	362/372 (97%)	354 (98%)	7 (2%)	1 (0%)	41	62
1	C	361/372 (97%)	352 (98%)	7 (2%)	2 (1%)	25	45
1	D	360/372 (97%)	353 (98%)	6 (2%)	1 (0%)	41	62
1	E	360/372 (97%)	352 (98%)	7 (2%)	1 (0%)	41	62
All	All	1803/1860 (97%)	1765 (98%)	31 (2%)	7 (0%)	34	55

All (7) Ramachandran outliers are listed below:

Mol	Chain	Res	Type
1	A	120	GLU
1	A	212	LYS
1	B	3	GLU
1	C	120	GLU
1	C	212	LYS
1	D	212	LYS

Continued on next page...

Continued from previous page...

Mol	Chain	Res	Type
1	E	212	LYS

5.3.2 Protein sidechains [i](#)

In the following table, the Percentiles column shows the percent sidechain outliers of the chain as a percentile score with respect to all X-ray entries followed by that with respect to entries of similar resolution.

The Analysed column shows the number of residues for which the sidechain conformation was analysed, and the total number of residues.

Mol	Chain	Analysed	Rotameric	Outliers	Percentiles
1	A	287/293 (98%)	278 (97%)	9 (3%)	40 64
1	B	290/293 (99%)	281 (97%)	9 (3%)	40 64
1	C	288/293 (98%)	279 (97%)	9 (3%)	40 64
1	D	289/293 (99%)	279 (96%)	10 (4%)	36 59
1	E	287/293 (98%)	280 (98%)	7 (2%)	49 72
All	All	1441/1465 (98%)	1397 (97%)	44 (3%)	40 64

All (44) residues with a non-rotameric sidechain are listed below:

Mol	Chain	Res	Type
1	A	4	LEU
1	A	47	ARG
1	A	61	GLN
1	A	80	LEU
1	A	124	ILE
1	A	169	ILE
1	A	172	GLU
1	A	179	GLN
1	A	240	TYR
1	B	47	ARG
1	B	61	GLN
1	B	80	LEU
1	B	124	ILE
1	B	169	ILE
1	B	179	GLN
1	B	214	LEU
1	B	218	GLU
1	B	240	TYR

Continued on next page...

Continued from previous page...

Mol	Chain	Res	Type
1	C	8	ARG
1	C	47	ARG
1	C	61	GLN
1	C	80	LEU
1	C	124	ILE
1	C	169	ILE
1	C	179	GLN
1	C	214	LEU
1	C	240	TYR
1	D	4	LEU
1	D	47	ARG
1	D	61	GLN
1	D	80	LEU
1	D	124	ILE
1	D	155	ARG
1	D	169	ILE
1	D	179	GLN
1	D	214	LEU
1	D	240	TYR
1	E	4	LEU
1	E	47	ARG
1	E	61	GLN
1	E	80	LEU
1	E	169	ILE
1	E	179	GLN
1	E	240	TYR

Sometimes sidechains can be flipped to improve hydrogen bonding and reduce clashes. All (26) such sidechains are listed below:

Mol	Chain	Res	Type
1	A	18	GLN
1	A	61	GLN
1	A	211	GLN
1	A	227	HIS
1	A	250	HIS
1	B	18	GLN
1	B	61	GLN
1	B	227	HIS
1	B	250	HIS
1	C	18	GLN
1	C	61	GLN
1	C	195	HIS

Continued on next page...

Continued from previous page...

Mol	Chain	Res	Type
1	C	211	GLN
1	C	227	HIS
1	C	250	HIS
1	D	18	GLN
1	D	61	GLN
1	D	195	HIS
1	D	211	GLN
1	D	227	HIS
1	D	250	HIS
1	E	18	GLN
1	E	61	GLN
1	E	211	GLN
1	E	227	HIS
1	E	250	HIS

5.3.3 RNA [i](#)

There are no RNA molecules in this entry.

5.4 Non-standard residues in protein, DNA, RNA chains [i](#)

There are no non-standard protein/DNA/RNA residues in this entry.

5.5 Carbohydrates [i](#)

There are no monosaccharides in this entry.

5.6 Ligand geometry [i](#)

5 ligands are modelled in this entry.

In the following table, the Counts columns list the number of bonds (or angles) for which Mogul statistics could be retrieved, the number of bonds (or angles) that are observed in the model and the number of bonds (or angles) that are defined in the Chemical Component Dictionary. The Link column lists molecule types, if any, to which the group is linked. The Z score for a bond length (or angle) is the number of standard deviations the observed value is removed from the expected value. A bond length (or angle) with $|Z| > 2$ is considered an outlier worth inspection. RMSZ is the root-mean-square of all Z scores of the bond lengths (or angles).

Mol	Type	Chain	Res	Link	Bond lengths			Bond angles		
					Counts	RMSZ	# Z > 2	Counts	RMSZ	# Z > 2
2	64Z	A	1366	-	10,10,10	3.87	4 (40%)	11,11,11	1.55	2 (18%)
2	64Z	E	1366	-	10,10,10	4.27	5 (50%)	11,11,11	1.35	3 (27%)
2	64Z	C	1366	-	10,10,10	4.06	4 (40%)	11,11,11	1.24	2 (18%)
2	64Z	B	1366	-	10,10,10	3.89	3 (30%)	11,11,11	1.41	2 (18%)
2	64Z	D	1366	-	10,10,10	4.12	3 (30%)	11,11,11	1.39	1 (9%)

In the following table, the Chirals column lists the number of chiral outliers, the number of chiral centers analysed, the number of these observed in the model and the number defined in the Chemical Component Dictionary. Similar counts are reported in the Torsion and Rings columns. '-' means no outliers of that kind were identified.

Mol	Type	Chain	Res	Link	Chirals	Torsions	Rings
2	64Z	A	1366	-	-	4/9/9/9	-
2	64Z	E	1366	-	-	4/9/9/9	-
2	64Z	C	1366	-	-	2/9/9/9	-
2	64Z	B	1366	-	-	2/9/9/9	-
2	64Z	D	1366	-	-	4/9/9/9	-

All (19) bond length outliers are listed below:

Mol	Chain	Res	Type	Atoms	Z	Observed(Å)	Ideal(Å)
2	C	1366	64Z	C6-C5	9.47	1.55	1.33
2	E	1366	64Z	C6-C5	9.33	1.55	1.33
2	D	1366	64Z	C6-C5	9.15	1.54	1.33
2	B	1366	64Z	C6-C5	9.02	1.54	1.33
2	A	1366	64Z	C6-C5	8.73	1.53	1.33
2	E	1366	64Z	C2-C1	7.69	1.54	1.32
2	D	1366	64Z	C2-C1	7.62	1.54	1.32
2	A	1366	64Z	C2-C1	7.25	1.53	1.32
2	C	1366	64Z	C2-C1	6.77	1.51	1.32
2	B	1366	64Z	C2-C1	6.74	1.51	1.32
2	E	1366	64Z	C7-C6	4.26	1.55	1.50
2	C	1366	64Z	C7-C6	4.20	1.55	1.50
2	D	1366	64Z	C7-C6	4.16	1.55	1.50
2	B	1366	64Z	C7-C6	3.95	1.55	1.50
2	A	1366	64Z	C7-C6	3.14	1.54	1.50
2	E	1366	64Z	O-C7	2.79	1.52	1.42
2	C	1366	64Z	O-C7	2.49	1.51	1.42
2	E	1366	64Z	C9-C1	2.36	1.56	1.50
2	A	1366	64Z	C-C1	2.22	1.56	1.50

All (10) bond angle outliers are listed below:

Mol	Chain	Res	Type	Atoms	Z	Observed(°)	Ideal(°)
2	A	1366	64Z	C-C1-C9	2.86	120.91	114.60
2	B	1366	64Z	C-C1-C9	2.57	120.28	114.60
2	D	1366	64Z	C-C1-C9	2.48	120.07	114.60
2	C	1366	64Z	C-C1-C9	2.37	119.84	114.60
2	E	1366	64Z	C-C1-C9	2.35	119.79	114.60
2	E	1366	64Z	O-C7-C6	2.24	115.81	110.79
2	A	1366	64Z	C7-C6-C5	-2.18	123.81	127.21
2	B	1366	64Z	C3-C2-C1	-2.17	120.33	127.75
2	E	1366	64Z	C3-C2-C1	-2.11	120.55	127.75
2	C	1366	64Z	C4-C3-C2	-2.08	105.04	111.88

There are no chirality outliers.

All (16) torsion outliers are listed below:

Mol	Chain	Res	Type	Atoms
2	D	1366	64Z	C2-C3-C4-C5
2	E	1366	64Z	C2-C3-C4-C5
2	C	1366	64Z	C3-C4-C5-C6
2	C	1366	64Z	C3-C4-C5-C8
2	A	1366	64Z	C2-C3-C4-C5
2	E	1366	64Z	C3-C4-C5-C8
2	A	1366	64Z	C3-C4-C5-C8
2	D	1366	64Z	C3-C4-C5-C8
2	A	1366	64Z	C3-C4-C5-C6
2	E	1366	64Z	C3-C4-C5-C6
2	D	1366	64Z	C3-C4-C5-C6
2	B	1366	64Z	C3-C4-C5-C8
2	B	1366	64Z	C3-C4-C5-C6
2	A	1366	64Z	C1-C2-C3-C4
2	D	1366	64Z	C1-C2-C3-C4
2	E	1366	64Z	C1-C2-C3-C4

There are no ring outliers.

No monomer is involved in short contacts.

5.7 Other polymers [\(i\)](#)

There are no such residues in this entry.

5.8 Polymer linkage issues

There are no chain breaks in this entry.

6 Fit of model and data [i](#)

6.1 Protein, DNA and RNA chains [i](#)

In the following table, the column labelled ‘#RSRZ> 2’ contains the number (and percentage) of RSRZ outliers, followed by percent RSRZ outliers for the chain as percentile scores relative to all X-ray entries and entries of similar resolution. The OWAB column contains the minimum, median, 95th percentile and maximum values of the occupancy-weighted average B-factor per residue. The column labelled ‘Q< 0.9’ lists the number of (and percentage) of residues with an average occupancy less than 0.9.

Mol	Chain	Analysed	<RSRZ>	#RSRZ>2	OWAB(Å ²)	Q<0.9
1	A	353/372 (94%)	-0.58	0 100 100	29, 40, 59, 75	0
1	B	355/372 (95%)	-0.55	0 100 100	27, 37, 58, 87	0
1	C	354/372 (95%)	-0.59	0 100 100	29, 38, 61, 89	0
1	D	353/372 (94%)	-0.61	0 100 100	28, 39, 59, 71	0
1	E	353/372 (94%)	-0.58	0 100 100	29, 40, 59, 79	0
All	All	1768/1860 (95%)	-0.58	0 100 100	27, 39, 59, 89	0

There are no RSRZ outliers to report.

6.2 Non-standard residues in protein, DNA, RNA chains [i](#)

There are no non-standard protein/DNA/RNA residues in this entry.

6.3 Carbohydrates [i](#)

There are no monosaccharides in this entry.

6.4 Ligands [i](#)

In the following table, the Atoms column lists the number of modelled atoms in the group and the number defined in the chemical component dictionary. The B-factors column lists the minimum, median, 95th percentile and maximum values of B factors of atoms in the group. The column labelled ‘Q< 0.9’ lists the number of atoms with occupancy less than 0.9.

Mol	Type	Chain	Res	Atoms	RSCC	RSR	B-factors(Å ²)	Q<0.9
2	64Z	D	1366	11/11	0.81	0.21	55,64,71,71	0
2	64Z	A	1366	11/11	0.85	0.19	58,63,67,70	0
2	64Z	E	1366	11/11	0.87	0.18	53,58,61,61	0

Continued on next page...

Continued from previous page...

Mol	Type	Chain	Res	Atoms	RSCC	RSR	B-factors(\AA^2)	Q<0.9
2	64Z	B	1366	11/11	0.88	0.22	58,63,67,69	0
2	64Z	C	1366	11/11	0.90	0.18	52,56,61,61	0

6.5 Other polymers [i](#)

There are no such residues in this entry.