



Full wwPDB X-ray Structure Validation Report ⓘ

Nov 3, 2024 – 01:39 am GMT

PDB ID : 5FUM
Title : Mus musculus acetylcholinesterase in complex with AL200
Authors : Knutsson, S.; Engdahl, C.; Ekstrom, F.; Linusson, A.
Deposited on : 2016-01-28
Resolution : 2.50 Å(reported)

This is a Full wwPDB X-ray Structure Validation Report for a publicly released PDB entry.

We welcome your comments at validation@mail.wwpdb.org

A user guide is available at

<https://www.wwpdb.org/validation/2017/XrayValidationReportHelp>

with specific help available everywhere you see the ⓘ symbol.

The types of validation reports are described at

<http://www.wwpdb.org/validation/2017/FAQs#types>.

The following versions of software and data (see [references ⓘ](#)) were used in the production of this report:

MolProbity : 4.02b-467
Mogul : 1.8.4, CSD as541be (2020)
Xtriage (Phenix) : 1.13
EDS : 3.0
buster-report : 1.1.7 (2018)
Percentile statistics : 20231227.v01 (using entries in the PDB archive December 27th 2023)
CCP4 : 9.0.003 (Gargrove)
Density-Fitness : 1.0.11
Ideal geometry (proteins) : Engh & Huber (2001)
Ideal geometry (DNA, RNA) : Parkinson et al. (1996)
Validation Pipeline (wwPDB-VP) : 2.39

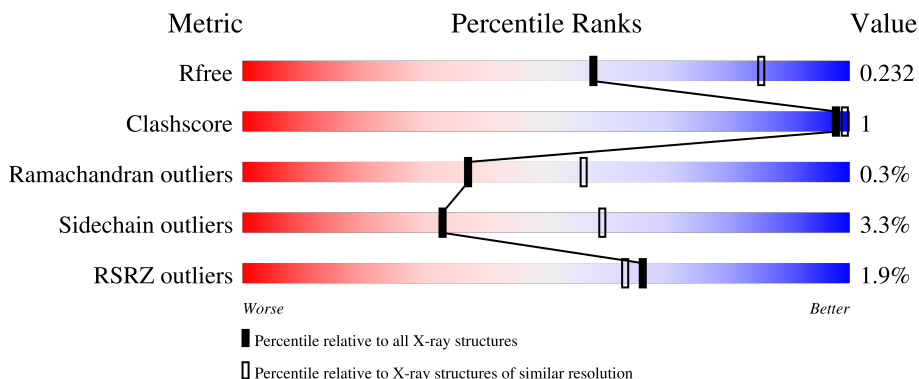
1 Overall quality at a glance

The following experimental techniques were used to determine the structure:

X-RAY DIFFRACTION

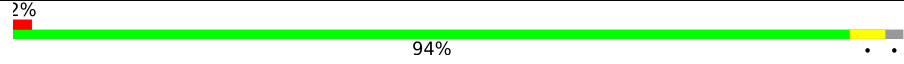
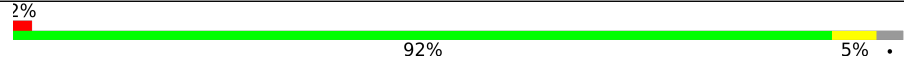
The reported resolution of this entry is 2.50 Å.

Percentile scores (ranging between 0-100) for global validation metrics of the entry are shown in the following graphic. The table shows the number of entries on which the scores are based.



Metric	Whole archive (#Entries)	Similar resolution (#Entries, resolution range(Å))
R_{free}	164625	5504 (2.50-2.50)
Clashscore	180529	6282 (2.50-2.50)
Ramachandran outliers	177936	6191 (2.50-2.50)
Sidechain outliers	177891	6193 (2.50-2.50)
RSRZ outliers	164620	5504 (2.50-2.50)

The table below summarises the geometric issues observed across the polymeric chains and their fit to the electron density. The red, orange, yellow and green segments of the lower bar indicate the fraction of residues that contain outliers for ≥ 3 , 2, 1 and 0 types of geometric quality criteria respectively. A grey segment represents the fraction of residues that are not modelled. The numeric value for each fraction is indicated below the corresponding segment, with a dot representing fractions $\leq 5\%$. The upper red bar (where present) indicates the fraction of residues that have poor fit to the electron density. The numeric value is given above the bar.

Mol	Chain	Length	Quality of chain
1	A	548	 2% 94%
1	B	548	 2% 92% 5%

2 Entry composition

There are 5 unique types of molecules in this entry. The entry contains 16874 atoms, of which 8273 are hydrogens and 0 are deuteriums.

In the tables below, the ZeroOcc column contains the number of atoms modelled with zero occupancy, the AltConf column contains the number of residues with at least one atom in alternate conformation and the Trace column contains the number of residues modelled with at most 2 atoms.

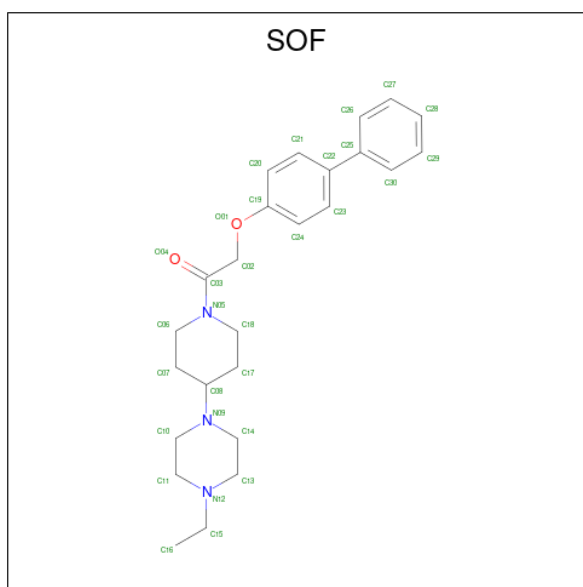
- Molecule 1 is a protein called ACETYLCHOLINESTERASE.

Mol	Chain	Residues	Atoms						ZeroOcc	AltConf	Trace
			Total	C	H	N	O	S			
1	A	535	8261	2686	4073	728	760	14	0	2	0
1	B	533	8204	2672	4043	719	756	14	0	1	0

There are 10 discrepancies between the modelled and reference sequences:

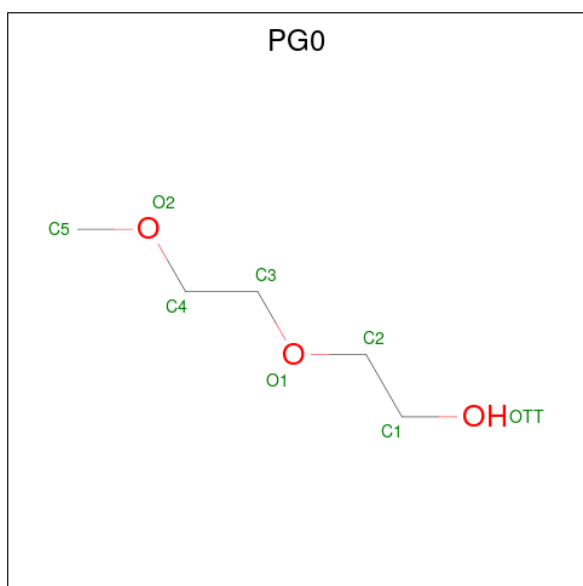
Chain	Residue	Modelled	Actual	Comment	Reference
A	544	ALA	-	expression tag	UNP P21836
A	545	THR	-	expression tag	UNP P21836
A	546	GLU	-	expression tag	UNP P21836
A	547	ALA	-	expression tag	UNP P21836
A	548	PRO	-	expression tag	UNP P21836
B	544	ALA	-	expression tag	UNP P21836
B	545	THR	-	expression tag	UNP P21836
B	546	GLU	-	expression tag	UNP P21836
B	547	ALA	-	expression tag	UNP P21836
B	548	PRO	-	expression tag	UNP P21836

- Molecule 2 is 2-(biphenyl-4-yloxy)-1-[4-(4-ethylpiperazin-1-yl)piperidin-1-yl]ethanone (three-letter code: SOF) (formula: C₂₅H₃₃N₃O₂).



Mol	Chain	Residues	Atoms				ZeroOcc	AltConf	
			Total	C	H	N			O
2	A	1	63	25	33	3	2	0	0
2	B	1	63	25	33	3	2	0	0

- Molecule 3 is 2-(2-METHOXYETHOXY)ETHANOL (three-letter code: PG0) (formula: $C_5H_{12}O_3$).



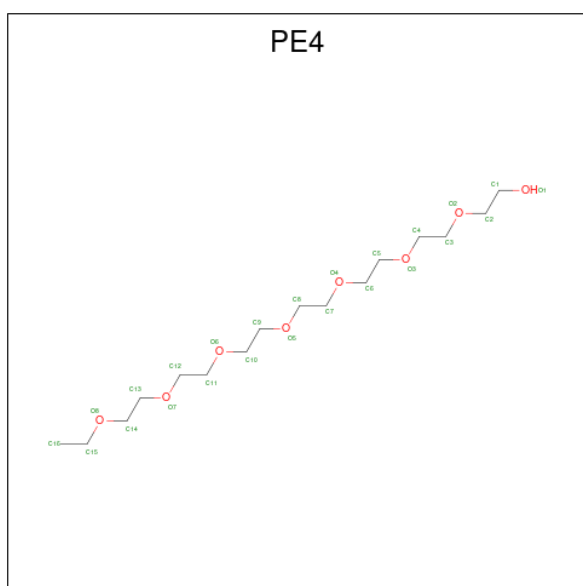
Mol	Chain	Residues	Atoms				ZeroOcc	AltConf
			Total	C	H	O		
3	A	1	20	5	12	3	0	0

Continued on next page...

Continued from previous page...

Mol	Chain	Residues	Atoms				ZeroOcc	AltConf
3	A	1	Total	C	H	O	0	0
			20	5	12	3		
3	B	1	Total	C	H	O	0	0
			20	5	12	3		
3	B	1	Total	C	H	O	0	0
			20	5	12	3		
3	B	1	Total	C	H	O	0	0
			20	5	12	3		

- Molecule 4 is 2-{2-[2-(2-{2-[2-(2-ETHOXY-ETHOXY)-ETHOXY]-ETHOXY}-ETHOXY)-ETHOXY]-ETHOXY}-ETHANOL (three-letter code: PE4) (formula: C₁₆H₃₄O₈).



Mol	Chain	Residues	Atoms				ZeroOcc	AltConf
4	B	1	Total	C	H	O	0	0
			54	15	31	8		

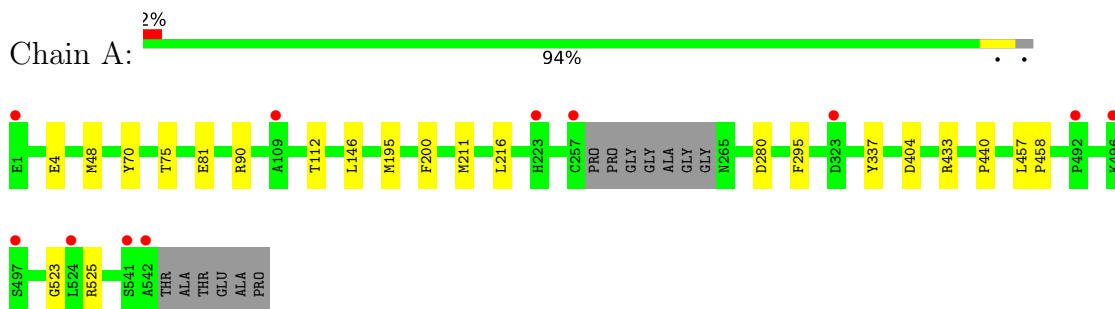
- Molecule 5 is water.

Mol	Chain	Residues	Atoms		ZeroOcc	AltConf
5	A	72	Total	O	0	0
			72	72		
5	B	57	Total	O	0	0
			57	57		

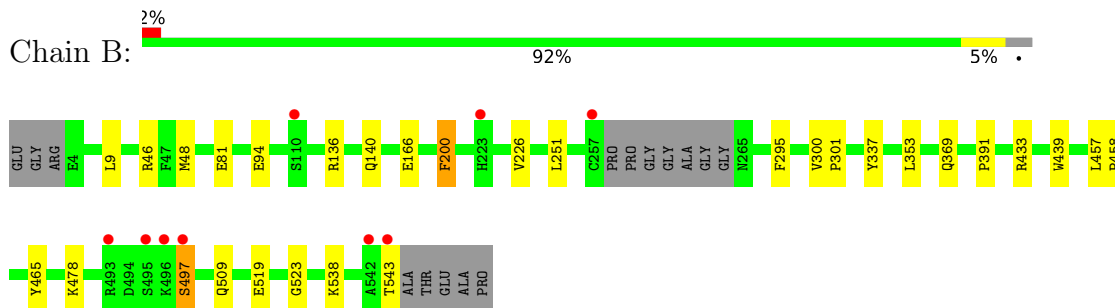
3 Residue-property plots [i](#)

These plots are drawn for all protein, RNA, DNA and oligosaccharide chains in the entry. The first graphic for a chain summarises the proportions of the various outlier classes displayed in the second graphic. The second graphic shows the sequence view annotated by issues in geometry and electron density. Residues are color-coded according to the number of geometric quality criteria for which they contain at least one outlier: green = 0, yellow = 1, orange = 2 and red = 3 or more. A red dot above a residue indicates a poor fit to the electron density ($RSRZ > 2$). Stretches of 2 or more consecutive residues without any outlier are shown as a green connector. Residues present in the sample, but not in the model, are shown in grey.

- Molecule 1: ACETYLCHOLINESTERASE



- Molecule 1: ACETYLCHOLINESTERASE



4 Data and refinement statistics

Property	Value	Source
Space group	P 21 21 21	Depositor
Cell constants a, b, c, α , β , γ	78.66Å 110.76Å 227.57Å 90.00° 90.00° 90.00°	Depositor
Resolution (Å)	29.08 – 2.50 29.08 – 2.50	Depositor EDS
% Data completeness (in resolution range)	99.2 (29.08-2.50) 84.1 (29.08-2.50)	Depositor EDS
R_{merge}	0.12	Depositor
R_{sym}	(Not available)	Depositor
$\langle I/\sigma(I) \rangle$ ¹	1.86 (at 2.51Å)	Xtrriage
Refinement program	PHENIX (PHENIX.REFINE: 1.9_1692)	Depositor
R, R_{free}	0.196 , 0.227 0.203 , 0.232	Depositor DCC
R_{free} test set	1393 reflections (2.02%)	wwPDB-VP
Wilson B-factor (Å ²)	42.7	Xtrriage
Anisotropy	0.758	Xtrriage
Bulk solvent k_{sol} (e/Å ³), B_{sol} (Å ²)	0.37 , 38.4	EDS
L-test for twinning ²	$\langle L \rangle = 0.48$, $\langle L^2 \rangle = 0.31$	Xtrriage
Estimated twinning fraction	No twinning to report.	Xtrriage
F_o, F_c correlation	0.94	EDS
Total number of atoms	16874	wwPDB-VP
Average B, all atoms (Å ²)	67.0	wwPDB-VP

Xtrriage's analysis on translational NCS is as follows: *The largest off-origin peak in the Patterson function is 2.94% of the height of the origin peak. No significant pseudotranslation is detected.*

¹Intensities estimated from amplitudes.

²Theoretical values of $\langle |L| \rangle$, $\langle L^2 \rangle$ for acentric reflections are 0.5, 0.333 respectively for untwinned datasets, and 0.375, 0.2 for perfectly twinned datasets.

5 Model quality

5.1 Standard geometry

Bond lengths and bond angles in the following residue types are not validated in this section: SOF, PE4, PG0

The Z score for a bond length (or angle) is the number of standard deviations the observed value is removed from the expected value. A bond length (or angle) with $|Z| > 5$ is considered an outlier worth inspection. RMSZ is the root-mean-square of all Z scores of the bond lengths (or angles).

Mol	Chain	Bond lengths		Bond angles	
		RMSZ	# Z >5	RMSZ	# Z >5
1	A	0.24	0/4315	0.43	0/5895
1	B	0.24	0/4288	0.43	0/5862
All	All	0.24	0/8603	0.43	0/11757

There are no bond length outliers.

There are no bond angle outliers.

There are no chirality outliers.

There are no planarity outliers.

5.2 Too-close contacts

In the following table, the Non-H and H(model) columns list the number of non-hydrogen atoms and hydrogen atoms in the chain respectively. The H(added) column lists the number of hydrogen atoms added and optimized by MolProbity. The Clashes column lists the number of clashes within the asymmetric unit, whereas Symm-Clashes lists symmetry-related clashes.

Mol	Chain	Non-H	H(model)	H(added)	Clashes	Symm-Clashes
1	A	4188	4073	4072	4	0
1	B	4161	4043	4043	8	0
2	A	30	33	0	0	0
2	B	30	33	0	0	0
3	A	16	24	24	0	0
3	B	24	36	36	0	0
4	B	23	31	29	0	0
5	A	72	0	0	1	0
5	B	57	0	0	0	0
All	All	8601	8273	8204	12	0

The all-atom clashscore is defined as the number of clashes found per 1000 atoms (including

hydrogen atoms). The all-atom clashscore for this structure is 1.

All (12) close contacts within the same asymmetric unit are listed below, sorted by their clash magnitude.

Atom-1	Atom-2	Interatomic distance (Å)	Clash overlap (Å)
1:A:404:ASP:OD1	1:A:525:ARG:NH1	2.36	0.58
1:A:433:ARG:NH2	1:A:440:PRO:O	2.49	0.46
1:B:457:LEU:N	1:B:458:PRO:CD	2.81	0.44
1:B:46:ARG:NH2	1:B:94:GLU:OE2	2.45	0.44
1:B:458:PRO:HA	1:B:465:TYR:CD2	2.54	0.43
1:B:48:MET:SD	1:B:166:GLU:HA	2.59	0.43
1:B:353:LEU:HB3	1:B:391:PRO:HB2	2.01	0.43
1:A:457:LEU:N	1:A:458:PRO:CD	2.82	0.42
1:A:90:ARG:NH2	5:A:2012:HOH:O	2.46	0.42
1:B:300:VAL:HB	1:B:301:PRO:HD2	2.02	0.42
1:B:200:PHE:CB	1:B:226:VAL:HB	2.49	0.41
1:B:433:ARG:NH2	1:B:439:TRP:O	2.53	0.41

There are no symmetry-related clashes.

5.3 Torsion angles [i](#)

5.3.1 Protein backbone [i](#)

In the following table, the Percentiles column shows the percent Ramachandran outliers of the chain as a percentile score with respect to all X-ray entries followed by that with respect to entries of similar resolution.

The Analysed column shows the number of residues for which the backbone conformation was analysed, and the total number of residues.

Mol	Chain	Analysed	Favoured	Allowed	Outliers	Percentiles	
1	A	533/548 (97%)	511 (96%)	21 (4%)	1 (0%)	44	64
1	B	530/548 (97%)	503 (95%)	25 (5%)	2 (0%)	30	49
All	All	1063/1096 (97%)	1014 (95%)	46 (4%)	3 (0%)	37	56

All (3) Ramachandran outliers are listed below:

Mol	Chain	Res	Type
1	B	497	SER
1	A	523	GLY
1	B	523	GLY

5.3.2 Protein sidechains

In the following table, the Percentiles column shows the percent sidechain outliers of the chain as a percentile score with respect to all X-ray entries followed by that with respect to entries of similar resolution.

The Analysed column shows the number of residues for which the sidechain conformation was analysed, and the total number of residues.

Mol	Chain	Analysed	Rotameric	Outliers	Percentiles	
1	A	440/446 (99%)	426 (97%)	14 (3%)	34	60
1	B	438/446 (98%)	423 (97%)	15 (3%)	32	58
All	All	878/892 (98%)	849 (97%)	29 (3%)	33	59

All (29) residues with a non-rotameric sidechain are listed below:

Mol	Chain	Res	Type
1	A	4	GLU
1	A	48	MET
1	A	70	TYR
1	A	75	THR
1	A	81	GLU
1	A	112	THR
1	A	146	LEU
1	A	195	MET
1	A	200	PHE
1	A	211	MET
1	A	216	LEU
1	A	280	ASP
1	A	295	PHE
1	A	337	TYR
1	B	9	LEU
1	B	81	GLU
1	B	136	ARG
1	B	140	GLN
1	B	200	PHE
1	B	251	LEU
1	B	295	PHE
1	B	337	TYR
1	B	369	GLN
1	B	478	LYS
1	B	497	SER
1	B	509	GLN
1	B	519	GLU

Continued on next page...

Continued from previous page...

Mol	Chain	Res	Type
1	B	538	LYS
1	B	543	THR

Sometimes sidechains can be flipped to improve hydrogen bonding and reduce clashes. There are no such sidechains identified.

5.3.3 RNA [i](#)

There are no RNA molecules in this entry.

5.4 Non-standard residues in protein, DNA, RNA chains [i](#)

There are no non-standard protein/DNA/RNA residues in this entry.

5.5 Carbohydrates [i](#)

There are no oligosaccharides in this entry.

5.6 Ligand geometry [i](#)

8 ligands are modelled in this entry.

In the following table, the Counts columns list the number of bonds (or angles) for which Mogul statistics could be retrieved, the number of bonds (or angles) that are observed in the model and the number of bonds (or angles) that are defined in the Chemical Component Dictionary. The Link column lists molecule types, if any, to which the group is linked. The Z score for a bond length (or angle) is the number of standard deviations the observed value is removed from the expected value. A bond length (or angle) with $|Z| > 2$ is considered an outlier worth inspection. RMSZ is the root-mean-square of all Z scores of the bond lengths (or angles).

Mol	Type	Chain	Res	Link	Bond lengths			Bond angles		
					Counts	RMSZ	# Z > 2	Counts	RMSZ	# Z > 2
3	PG0	A	1544	-	7,7,7	0.60	0	6,6,6	0.89	0
2	SOF	B	1544	-	33,33,33	1.58	6 (18%)	44,44,44	2.21	11 (25%)
4	PE4	B	1548	-	22,22,23	0.66	0	21,21,22	0.90	0
3	PG0	A	1545	-	7,7,7	0.61	0	6,6,6	0.95	0
2	SOF	A	1543	-	33,33,33	1.49	5 (15%)	44,44,44	2.14	11 (25%)
3	PG0	B	1547	-	7,7,7	0.60	0	6,6,6	0.81	0
3	PG0	B	1545	-	7,7,7	0.62	0	6,6,6	0.82	0
3	PG0	B	1546	-	7,7,7	0.63	0	6,6,6	0.93	0

In the following table, the Chirals column lists the number of chiral outliers, the number of chiral centers analysed, the number of these observed in the model and the number defined in the Chemical Component Dictionary. Similar counts are reported in the Torsion and Rings columns. '-' means no outliers of that kind were identified.

Mol	Type	Chain	Res	Link	Chirals	Torsions	Rings
3	PG0	A	1544	-	-	2/5/5/5	-
2	SOF	B	1544	-	-	6/19/39/39	0/4/4/4
4	PE4	B	1548	-	-	10/20/20/21	-
3	PG0	A	1545	-	-	1/5/5/5	-
2	SOF	A	1543	-	-	6/19/39/39	0/4/4/4
3	PG0	B	1547	-	-	3/5/5/5	-
3	PG0	B	1545	-	-	1/5/5/5	-
3	PG0	B	1546	-	-	2/5/5/5	-

All (11) bond length outliers are listed below:

Mol	Chain	Res	Type	Atoms	Z	Observed(Å)	Ideal(Å)
2	B	1544	SOF	C21-C20	3.32	1.44	1.38
2	A	1543	SOF	C21-C20	3.14	1.44	1.38
2	B	1544	SOF	C02-C03	3.10	1.59	1.52
2	B	1544	SOF	C03-N05	3.03	1.41	1.35
2	A	1543	SOF	C03-N05	2.89	1.41	1.35
2	A	1543	SOF	C02-C03	2.83	1.58	1.52
2	B	1544	SOF	C24-C23	2.66	1.43	1.38
2	A	1543	SOF	C24-C23	2.64	1.43	1.38
2	B	1544	SOF	C11-N12	2.21	1.53	1.46
2	A	1543	SOF	C11-N12	2.07	1.52	1.46
2	B	1544	SOF	O01-C19	2.02	1.42	1.37

All (22) bond angle outliers are listed below:

Mol	Chain	Res	Type	Atoms	Z	Observed(°)	Ideal(°)
2	B	1544	SOF	C07-C06-N05	7.49	122.20	110.82
2	A	1543	SOF	C07-C06-N05	6.22	120.28	110.82
2	A	1543	SOF	C13-N12-C11	5.23	120.60	108.83
2	A	1543	SOF	C11-C10-N09	4.99	120.14	110.59
2	B	1544	SOF	C11-C10-N09	4.81	119.80	110.59
2	B	1544	SOF	C13-N12-C11	4.70	119.41	108.83
2	A	1543	SOF	C13-C14-N09	4.26	118.74	110.59
2	B	1544	SOF	C06-C07-C08	3.70	117.85	110.81
2	A	1543	SOF	C02-C03-N05	3.38	124.77	116.93
2	B	1544	SOF	C02-C03-N05	3.37	124.76	116.93

Continued on next page...

Continued from previous page...

Mol	Chain	Res	Type	Atoms	Z	Observed(°)	Ideal(°)
2	B	1544	SOF	C13-C14-N09	3.36	117.03	110.59
2	A	1543	SOF	C10-C11-N12	3.17	117.15	110.64
2	B	1544	SOF	C10-C11-N12	3.09	116.98	110.64
2	B	1544	SOF	C17-C18-N05	3.01	115.40	110.82
2	A	1543	SOF	C06-C07-C08	2.97	116.47	110.81
2	B	1544	SOF	O01-C02-C03	2.78	117.70	109.80
2	B	1544	SOF	C24-C19-C20	-2.65	116.10	120.18
2	A	1543	SOF	O01-C02-C03	2.57	117.11	109.80
2	A	1543	SOF	C17-C18-N05	2.52	114.66	110.82
2	A	1543	SOF	C14-N09-C10	2.47	113.58	109.08
2	A	1543	SOF	C24-C19-C20	-2.43	116.43	120.18
2	B	1544	SOF	C18-C17-C08	2.26	115.11	110.81

There are no chirality outliers.

All (31) torsion outliers are listed below:

Mol	Chain	Res	Type	Atoms
2	A	1543	SOF	C16-C15-N12-C11
4	B	1548	PE4	C8-C7-O4-C6
2	B	1544	SOF	C23-C22-C25-C30
2	B	1544	SOF	C23-C22-C25-C26
2	B	1544	SOF	C21-C22-C25-C30
2	A	1543	SOF	C23-C22-C25-C26
2	A	1543	SOF	C23-C22-C25-C30
2	B	1544	SOF	C21-C22-C25-C26
2	A	1543	SOF	C21-C22-C25-C30
2	A	1543	SOF	C21-C22-C25-C26
2	B	1544	SOF	C16-C15-N12-C13
4	B	1548	PE4	O4-C7-C8-O5
4	B	1548	PE4	O2-C3-C4-O3
3	B	1547	PG0	OTT-C1-C2-O1
2	A	1543	SOF	C16-C15-N12-C13
3	B	1545	PG0	O1-C3-C4-O2
3	B	1547	PG0	O1-C3-C4-O2
4	B	1548	PE4	O7-C13-C14-O8
2	B	1544	SOF	C16-C15-N12-C11
4	B	1548	PE4	O6-C11-C12-O7
4	B	1548	PE4	C11-C12-O7-C13
3	A	1544	PG0	O1-C3-C4-O2
3	B	1547	PG0	C4-C3-O1-C2
3	B	1546	PG0	C4-C3-O1-C2
4	B	1548	PE4	C6-C5-O3-C4

Continued on next page...

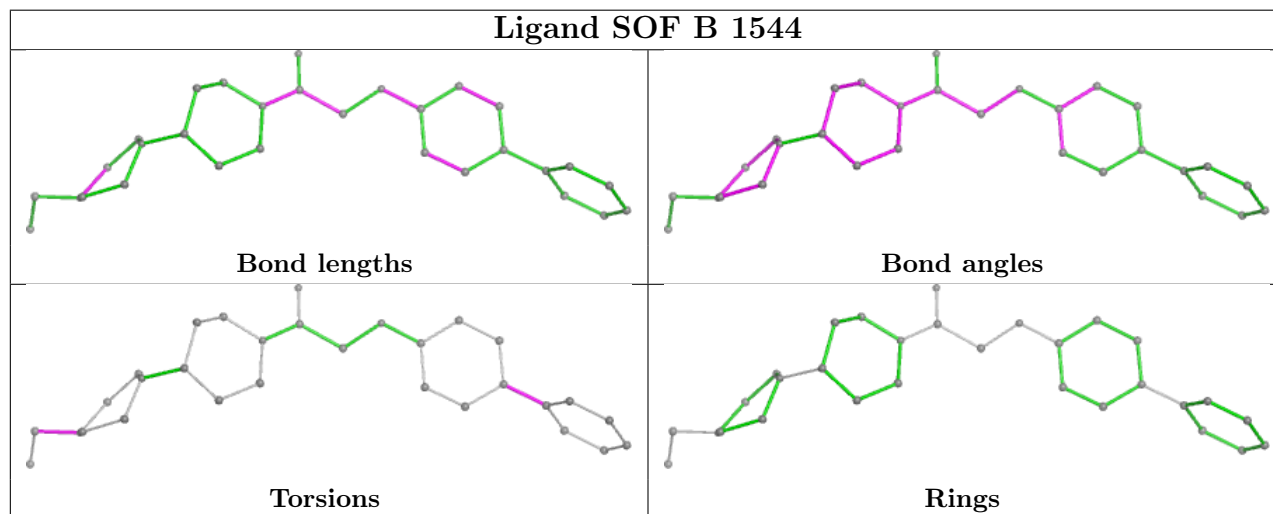
Continued from previous page...

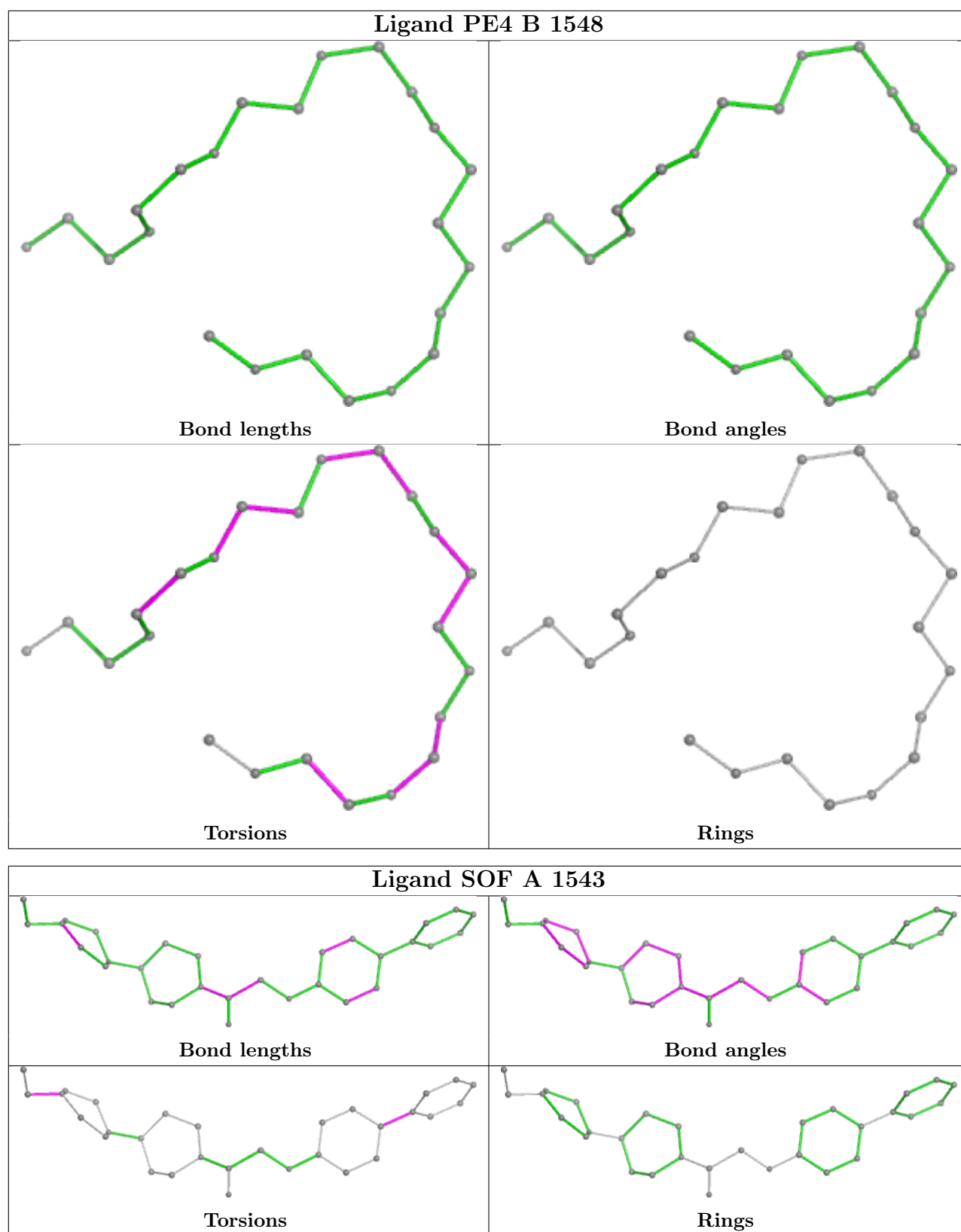
Mol	Chain	Res	Type	Atoms
4	B	1548	PE4	C10-C9-O5-C8
3	A	1545	PG0	O1-C3-C4-O2
4	B	1548	PE4	O3-C5-C6-O4
3	A	1544	PG0	C1-C2-O1-C3
3	B	1546	PG0	O1-C3-C4-O2
4	B	1548	PE4	O6-C10-C9-O5

There are no ring outliers.

No monomer is involved in short contacts.

The following is a two-dimensional graphical depiction of Mogul quality analysis of bond lengths, bond angles, torsion angles, and ring geometry for all instances of the Ligand of Interest. In addition, ligands with molecular weight > 250 and outliers as shown on the validation Tables will also be included. For torsion angles, if less than 5% of the Mogul distribution of torsion angles is within 10 degrees of the torsion angle in question, then that torsion angle is considered an outlier. Any bond that is central to one or more torsion angles identified as an outlier by Mogul will be highlighted in the graph. For rings, the root-mean-square deviation (RMSD) between the ring in question and similar rings identified by Mogul is calculated over all ring torsion angles. If the average RMSD is greater than 60 degrees and the minimal RMSD between the ring in question and any Mogul-identified rings is also greater than 60 degrees, then that ring is considered an outlier. The outliers are highlighted in purple. The color gray indicates Mogul did not find sufficient equivalents in the CSD to analyse the geometry.





5.7 Other polymers ⓘ

There are no such residues in this entry.

5.8 Polymer linkage issues

There are no chain breaks in this entry.

6 Fit of model and data [i](#)

6.1 Protein, DNA and RNA chains [i](#)

In the following table, the column labelled ‘#RSRZ > 2’ contains the number (and percentage) of RSRZ outliers, followed by percent RSRZ outliers for the chain as percentile scores relative to all X-ray entries and entries of similar resolution. The OWAB column contains the minimum, median, 95th percentile and maximum values of the occupancy-weighted average B-factor per residue. The column labelled ‘Q < 0.9’ lists the number of (and percentage) of residues with an average occupancy less than 0.9.

Mol	Chain	Analysed	<RSRZ>	#RSRZ>2	OWAB(Å ²)	Q<0.9
1	A	535/548 (97%)	0.07	11 (2%) 63 60	36, 62, 85, 112	2 (0%)
1	B	533/548 (97%)	0.25	9 (1%) 69 65	35, 68, 90, 120	1 (0%)
All	All	1068/1096 (97%)	0.16	20 (1%) 66 63	35, 64, 89, 120	3 (0%)

All (20) RSRZ outliers are listed below:

Mol	Chain	Res	Type	RSRZ
1	B	496	LYS	6.3
1	B	543	THR	5.7
1	B	497	SER	4.2
1	B	257	CYS	4.0
1	B	495	SER	3.4
1	A	542	ALA	3.3
1	B	493	ARG	3.0
1	A	223[A]	HIS	3.0
1	A	524	LEU	2.9
1	A	1	GLU	2.9
1	A	541	SER	2.4
1	B	223[A]	HIS	2.4
1	B	110	SER	2.3
1	A	109	ALA	2.3
1	A	496	LYS	2.2
1	A	257	CYS	2.2
1	A	497	SER	2.1
1	A	323	ASP	2.1
1	B	542	ALA	2.0
1	A	492	PRO	2.0

6.2 Non-standard residues in protein, DNA, RNA chains [i](#)

There are no non-standard protein/DNA/RNA residues in this entry.

6.3 Carbohydrates [i](#)

There are no monosaccharides in this entry.

6.4 Ligands [i](#)

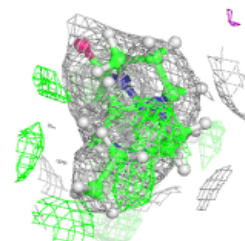
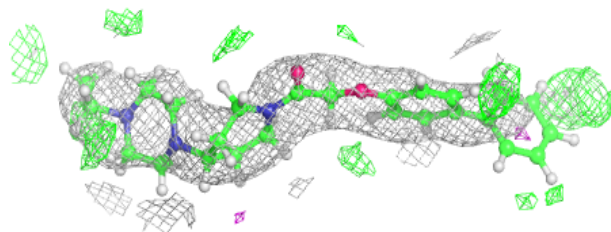
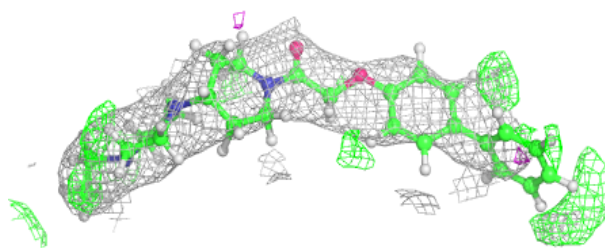
In the following table, the Atoms column lists the number of modelled atoms in the group and the number defined in the chemical component dictionary. The B-factors column lists the minimum, median, 95th percentile and maximum values of B factors of atoms in the group. The column labelled 'Q< 0.9' lists the number of atoms with occupancy less than 0.9.

Mol	Type	Chain	Res	Atoms	RSCC	RSR	B-factors(\AA^2)	Q<0.9
3	PG0	B	1546	8/8	0.74	0.25	68,95,120,120	0
3	PG0	A	1544	8/8	0.76	0.23	76,94,107,112	0
3	PG0	B	1545	8/8	0.80	0.19	75,96,123,138	0
3	PG0	B	1547	8/8	0.83	0.17	79,96,118,118	0
2	SOF	B	1544	30/30	0.84	0.23	62,103,126,138	0
3	PG0	A	1545	8/8	0.85	0.22	59,90,113,113	0
2	SOF	A	1543	30/30	0.86	0.21	62,94,115,131	0
4	PE4	B	1548	23/24	0.87	0.21	56,88,106,111	0

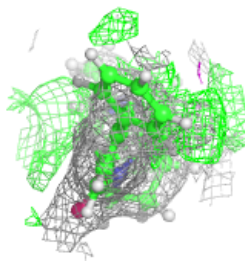
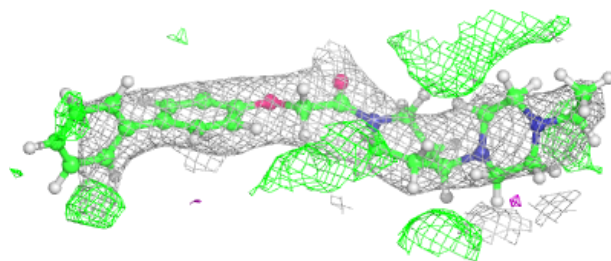
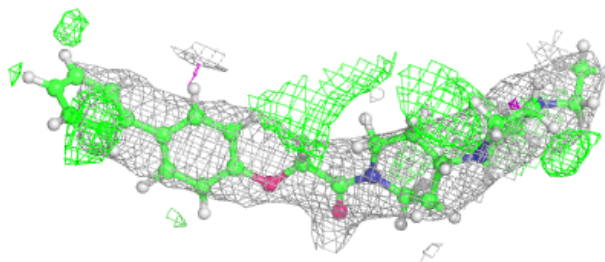
The following is a graphical depiction of the model fit to experimental electron density of all instances of the Ligand of Interest. In addition, ligands with molecular weight > 250 and outliers as shown on the geometry validation Tables will also be included. Each fit is shown from different orientation to approximate a three-dimensional view.

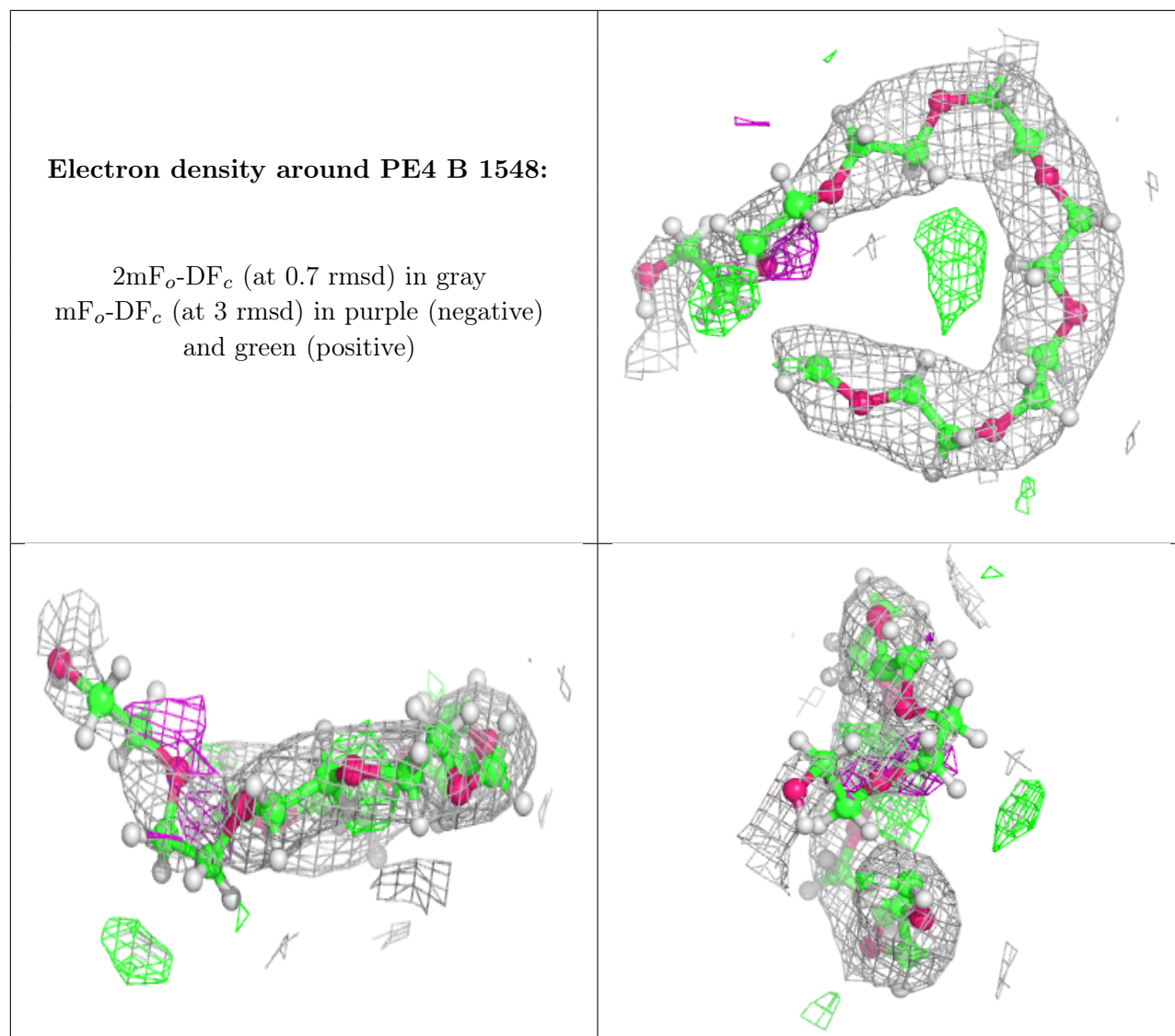
Electron density around SOF B 1544:

$2mF_o-DF_c$ (at 0.7 rmsd) in gray
 mF_o-DF_c (at 3 rmsd) in purple (negative)
and green (positive)

**Electron density around SOF A 1543:**

$2mF_o-DF_c$ (at 0.7 rmsd) in gray
 mF_o-DF_c (at 3 rmsd) in purple (negative)
and green (positive)





6.5 Other polymers [i](#)

There are no such residues in this entry.