



Full wwPDB X-ray Structure Validation Report ⓘ

Mar 13, 2024 – 04:59 PM JST

PDB ID : 5EJA
Title : EcMenD-ThDP-Mn²⁺ complex soaked with 2-ketoglutarate for 2 min and soaked with isochorismate for 7 min
Authors : Song, H.G.; Dong, C.; Chen, Y.Z.; Sun, Y.R.; Guo, Z.H.
Deposited on : 2015-11-01
Resolution : 1.60 Å(reported)

This is a Full wwPDB X-ray Structure Validation Report for a publicly released PDB entry.

We welcome your comments at validation@mail.wwpdb.org

A user guide is available at

<https://www.wwpdb.org/validation/2017/XrayValidationReportHelp>

with specific help available everywhere you see the ⓘ symbol.

The types of validation reports are described at

<http://www.wwpdb.org/validation/2017/FAQs#types>.

The following versions of software and data (see [references ⓘ](#)) were used in the production of this report:

MolProbity : 4.02b-467
Mogul : 1.8.5 (274361), CSD as541be (2020)
Xtriage (Phenix) : 1.13
EDS : 2.36
buster-report : 1.1.7 (2018)
Percentile statistics : 20191225.v01 (using entries in the PDB archive December 25th 2019)
Refmac : 5.8.0158
CCP4 : 7.0.044 (Gargrove)
Ideal geometry (proteins) : Engh & Huber (2001)
Ideal geometry (DNA, RNA) : Parkinson et al. (1996)
Validation Pipeline (wwPDB-VP) : 2.36

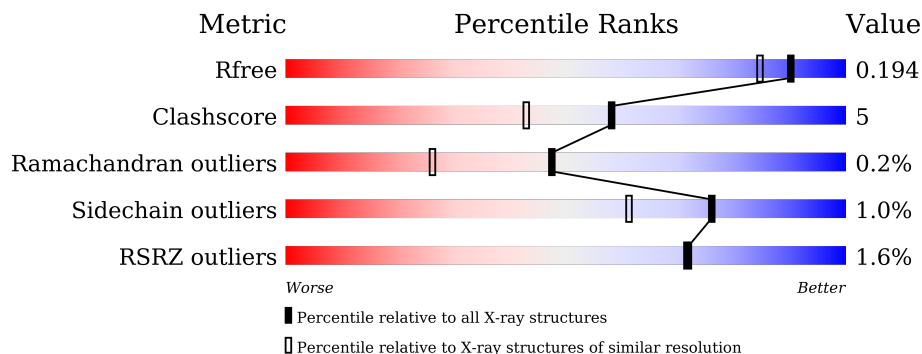
1 Overall quality at a glance

The following experimental techniques were used to determine the structure:

X-RAY DIFFRACTION

The reported resolution of this entry is 1.60 Å.

Percentile scores (ranging between 0-100) for global validation metrics of the entry are shown in the following graphic. The table shows the number of entries on which the scores are based.



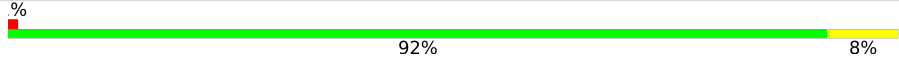
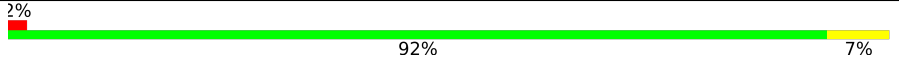
Metric	Whole archive (#Entries)	Similar resolution (#Entries, resolution range(Å))
R_{free}	130704	3398 (1.60-1.60)
Clashscore	141614	3665 (1.60-1.60)
Ramachandran outliers	138981	3564 (1.60-1.60)
Sidechain outliers	138945	3563 (1.60-1.60)
RSRZ outliers	127900	3321 (1.60-1.60)

The table below summarises the geometric issues observed across the polymeric chains and their fit to the electron density. The red, orange, yellow and green segments of the lower bar indicate the fraction of residues that contain outliers for ≥ 3 , 2, 1 and 0 types of geometric quality criteria respectively. A grey segment represents the fraction of residues that are not modelled. The numeric value for each fraction is indicated below the corresponding segment, with a dot representing fractions $\leq 5\%$. The upper red bar (where present) indicates the fraction of residues that have poor fit to the electron density. The numeric value is given above the bar.

Mol	Chain	Length	Quality of chain
1	A	556	 2% 90% 10%
1	B	556	 % 94% 6%
1	C	556	 % 90% 9%
1	D	556	 3% 89% 11%
1	E	556	 2% 90% 10%
1	F	556	 % 92% 8%

Continued on next page...

Continued from previous page...

Mol	Chain	Length	Quality of chain
1	G	556	 % 92% 8%
1	H	556	 2% 92% 7%

2 Entry composition [i](#)

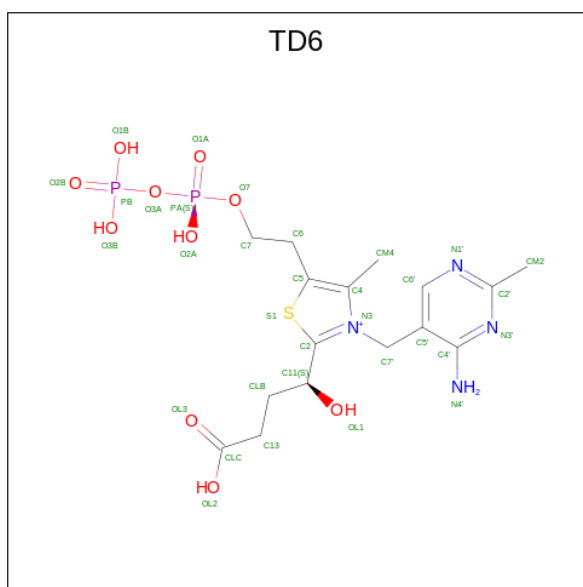
There are 5 unique types of molecules in this entry. The entry contains 40819 atoms, of which 224 are hydrogens and 0 are deuteriums.

In the tables below, the ZeroOcc column contains the number of atoms modelled with zero occupancy, the AltConf column contains the number of residues with at least one atom in alternate conformation and the Trace column contains the number of residues modelled with at most 2 atoms.

- Molecule 1 is a protein called 2-succinyl-5-enolpyruvyl-6-hydroxy-3-cyclohexene-1-carboxylate synthase.

Mol	Chain	Residues	Atoms					ZeroOcc	AltConf	Trace
1	A	556	Total	C	N	O	S	0	8	0
			4370	2773	789	793	15			
1	B	556	Total	C	N	O	S	0	4	0
			4335	2752	777	791	15			
1	C	556	Total	C	N	O	S	0	7	0
			4367	2770	789	793	15			
1	D	556	Total	C	N	O	S	0	3	0
			4309	2738	770	787	14			
1	E	556	Total	C	N	O	S	0	10	0
			4387	2782	789	802	14			
1	F	556	Total	C	N	O	S	0	7	0
			4370	2769	786	801	14			
1	G	556	Total	C	N	O	S	0	7	0
			4352	2762	782	794	14			
1	H	556	Total	C	N	O	S	0	6	0
			4336	2756	777	789	14			

- Molecule 2 is (4S)-4-{3-[(4-amino-2-methylpyrimidin-5-yl)methyl]-5-(2-[(S)-hydroxy(phosphonoxy)phosphoryl]oxy)ethyl)-4-methyl-1,3lambda 5 -thiazol-2-yl}-4-hydroxybutanoic acid (three-letter code: TD6) (formula: C₁₆H₂₅N₄O₁₀P₂S).



Mol	Chain	Residues	Atoms							ZeroOcc	AltConf
			Total	C	H	N	O	P	S		
2	A	1	Total	C	H	N	O	P	S	0	0
			53	16	20	4	10	2	1		
2	B	1	Total	C	H	N	O	P	S	0	0
			53	16	20	4	10	2	1		
2	C	1	Total	C	H	N	O	P	S	0	0
			53	16	20	4	10	2	1		
2	D	1	Total	C	H	N	O	P	S	0	0
			53	16	20	4	10	2	1		
2	E	1	Total	C	H	N	O	P	S	0	0
			53	16	20	4	10	2	1		
2	F	1	Total	C	H	N	O	P	S	0	0
			53	16	20	4	10	2	1		
2	G	1	Total	C	H	N	O	P	S	0	0
			53	16	20	4	10	2	1		
2	H	1	Total	C	H	N	O	P	S	0	0
			53	16	20	4	10	2	1		

- Molecule 3 is MANGANESE (II) ION (three-letter code: MN) (formula: Mn).

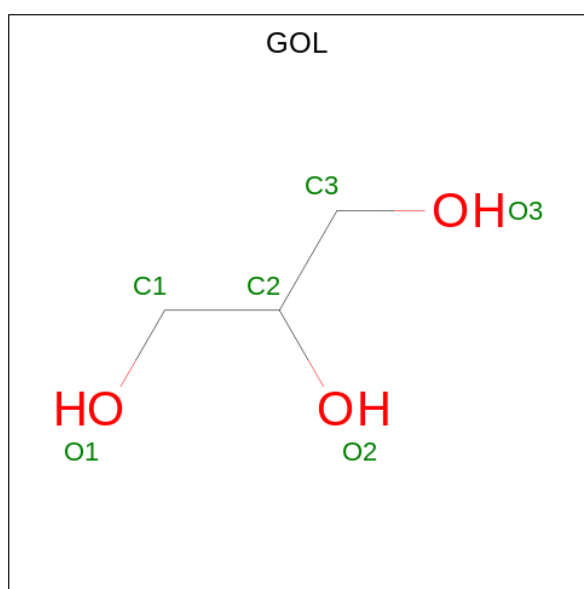
Mol	Chain	Residues	Atoms		ZeroOcc	AltConf
3	A	1	Total	Mn	0	0
			1	1		
3	B	1	Total	Mn	0	0
			1	1		
3	C	1	Total	Mn	0	0
			1	1		
3	D	1	Total	Mn	0	0
			1	1		

Continued on next page...

Continued from previous page...

Mol	Chain	Residues	Atoms		ZeroOcc	AltConf
3	E	1	Total	Mn	0	0
			1	1		
3	F	1	Total	Mn	0	0
			1	1		
3	G	1	Total	Mn	0	0
			1	1		
3	H	1	Total	Mn	0	0
			1	1		

- Molecule 4 is GLYCEROL (three-letter code: GOL) (formula: C₃H₈O₃).



Mol	Chain	Residues	Atoms				ZeroOcc	AltConf
4	A	1	Total	C	H	O	0	0
			14	3	8	3		
4	B	1	Total	C	H	O	0	0
			14	3	8	3		
4	C	1	Total	C	H	O	0	0
			14	3	8	3		
4	D	1	Total	C	H	O	0	0
			14	3	8	3		
4	E	1	Total	C	H	O	0	0
			14	3	8	3		
4	F	1	Total	C	H	O	0	0
			14	3	8	3		
4	G	1	Total	C	H	O	0	0
			14	3	8	3		

Continued on next page...

Continued from previous page...

Mol	Chain	Residues	Atoms				ZeroOcc	AltConf
4	H	1	Total	C	H	O	0	0
			14	3	8	3		

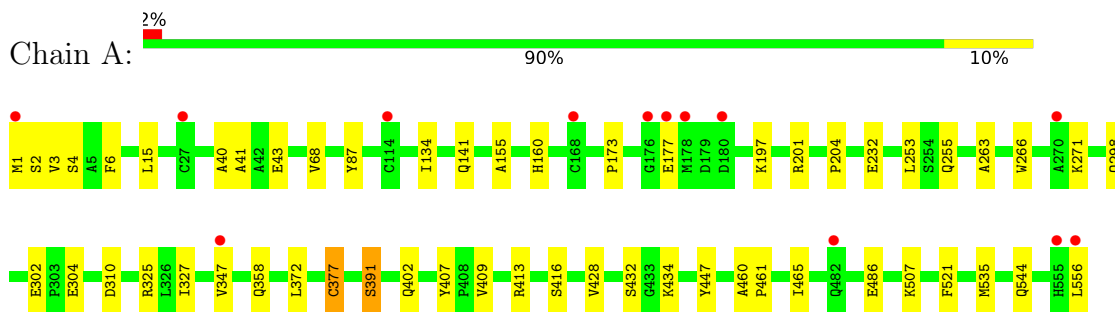
- Molecule 5 is water.

Mol	Chain	Residues	Atoms		ZeroOcc	AltConf
5	A	722	Total	O	0	0
			722	722		
5	B	743	Total	O	0	0
			743	743		
5	C	679	Total	O	0	0
			679	679		
5	D	586	Total	O	0	0
			586	586		
5	E	748	Total	O	0	0
			748	748		
5	F	688	Total	O	0	0
			688	688		
5	G	685	Total	O	0	0
			685	685		
5	H	598	Total	O	0	0
			598	598		

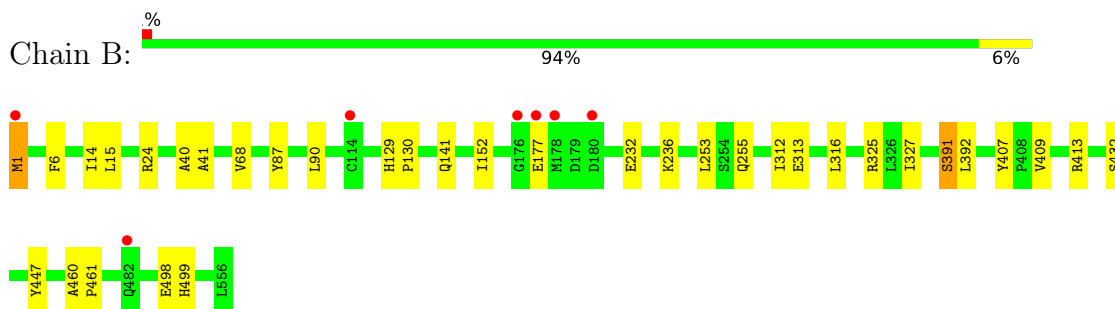
3 Residue-property plots

These plots are drawn for all protein, RNA, DNA and oligosaccharide chains in the entry. The first graphic for a chain summarises the proportions of the various outlier classes displayed in the second graphic. The second graphic shows the sequence view annotated by issues in geometry and electron density. Residues are color-coded according to the number of geometric quality criteria for which they contain at least one outlier: green = 0, yellow = 1, orange = 2 and red = 3 or more. A red dot above a residue indicates a poor fit to the electron density ($RSRZ > 2$). Stretches of 2 or more consecutive residues without any outlier are shown as a green connector. Residues present in the sample, but not in the model, are shown in grey.

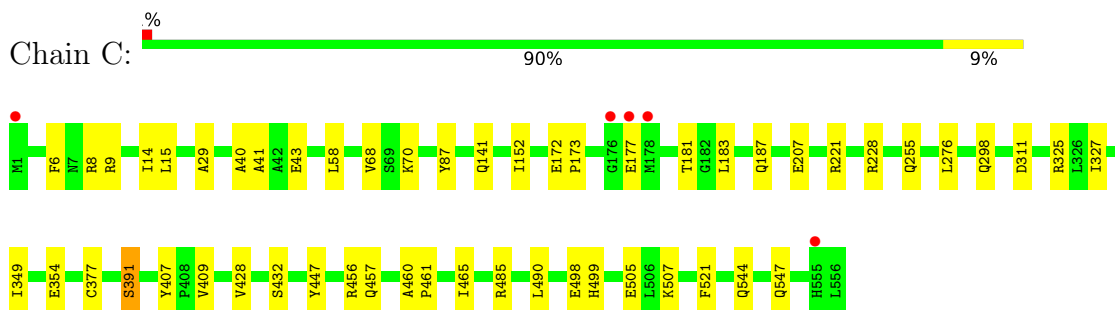
- Molecule 1: 2-succinyl-5-enolpyruvyl-6-hydroxy-3-cyclohexene-1-carboxylate synthase



- Molecule 1: 2-succinyl-5-enolpyruvyl-6-hydroxy-3-cyclohexene-1-carboxylate synthase

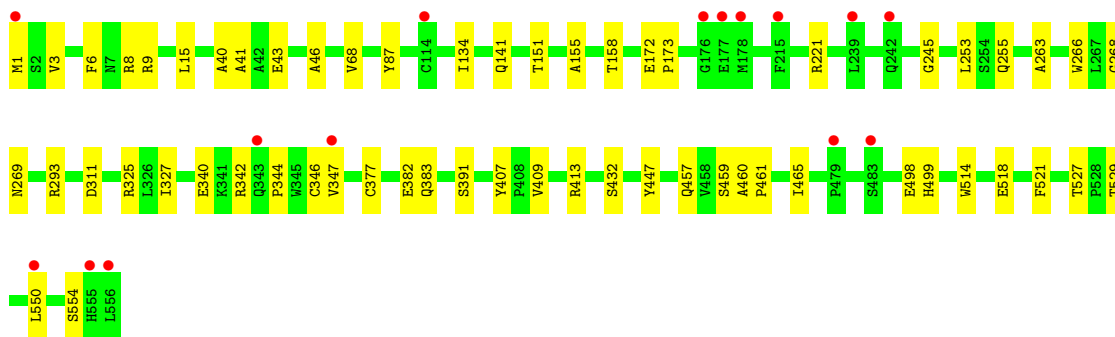


- Molecule 1: 2-succinyl-5-enolpyruvyl-6-hydroxy-3-cyclohexene-1-carboxylate synthase

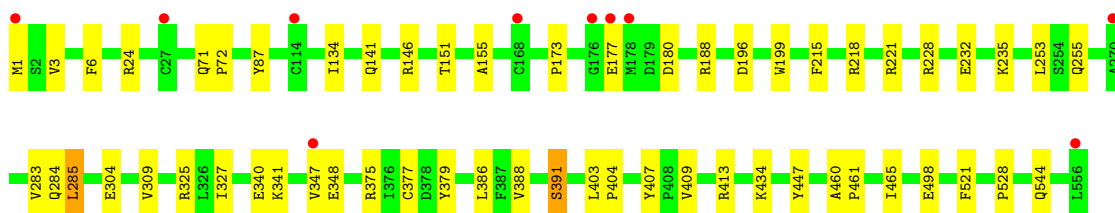
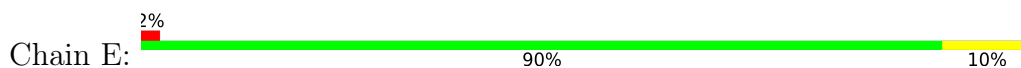


- Molecule 1: 2-succinyl-5-enolpyruvyl-6-hydroxy-3-cyclohexene-1-carboxylate synthase

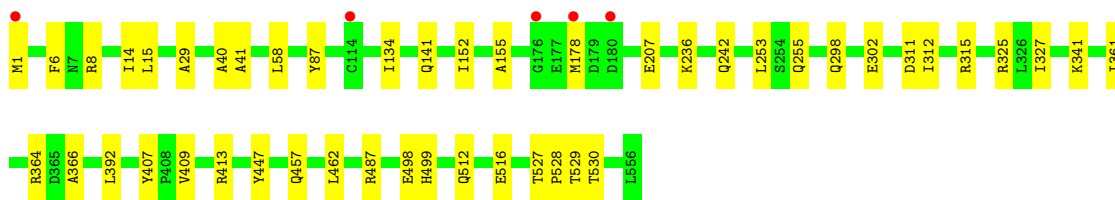
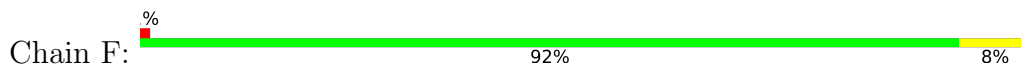




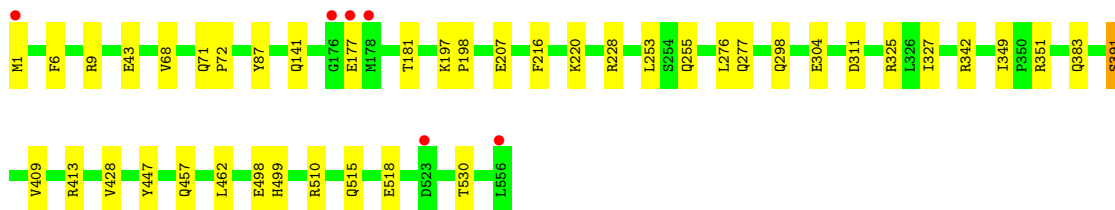
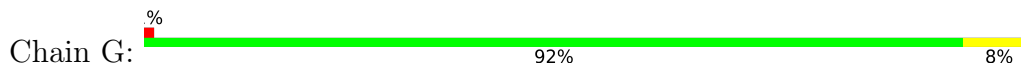
- Molecule 1: 2-succinyl-5-enolpyruvyl-6-hydroxy-3-cyclohexene-1-carboxylate synthase



- Molecule 1: 2-succinyl-5-enolpyruvyl-6-hydroxy-3-cyclohexene-1-carboxylate synthase



- Molecule 1: 2-succinyl-5-enolpyruvyl-6-hydroxy-3-cyclohexene-1-carboxylate synthase



- Molecule 1: 2-succinyl-5-enolpyruvyl-6-hydroxy-3-cyclohexene-1-carboxylate synthase





4 Data and refinement statistics i

Property	Value	Source
Space group	P 1	Depositor
Cell constants a, b, c, α , β , γ	90.61Å 90.66Å 169.46Å 76.03° 83.39° 64.41°	Depositor
Resolution (Å)	50.52 – 1.60 50.52 – 1.60	Depositor EDS
% Data completeness (in resolution range)	93.6 (50.52-1.60) 90.7 (50.52-1.60)	Depositor EDS
R_{merge}	0.07	Depositor
R_{sym}	(Not available)	Depositor
$\langle I/\sigma(I) \rangle$ ¹	2.21 (at 1.60Å)	Xtrriage
Refinement program	PHENIX (1.10_2152: ???)	Depositor
R, R_{free}	0.170 , 0.193 0.170 , 0.194	Depositor DCC
R_{free} test set	29228 reflections (5.01%)	wwPDB-VP
Wilson B-factor (Å ²)	13.6	Xtrriage
Anisotropy	0.076	Xtrriage
Bulk solvent k_{sol} (e/Å ³), B_{sol} (Å ²)	0.36 , 47.3	EDS
L-test for twinning ²	$\langle L \rangle = 0.45$, $\langle L^2 \rangle = 0.27$	Xtrriage
Estimated twinning fraction	0.034 for -h,-k,-k+1	Xtrriage
F_o, F_c correlation	0.96	EDS
Total number of atoms	40819	wwPDB-VP
Average B, all atoms (Å ²)	17.0	wwPDB-VP

Xtrriage's analysis on translational NCS is as follows: *The largest off-origin peak in the Patterson function is 3.64% of the height of the origin peak. No significant pseudotranslation is detected.*

¹Intensities estimated from amplitudes.

²Theoretical values of $\langle |L| \rangle$, $\langle L^2 \rangle$ for acentric reflections are 0.5, 0.333 respectively for untwinned datasets, and 0.375, 0.2 for perfectly twinned datasets.

5 Model quality [i](#)

5.1 Standard geometry [i](#)

Bond lengths and bond angles in the following residue types are not validated in this section: MN, TD6, GOL

The Z score for a bond length (or angle) is the number of standard deviations the observed value is removed from the expected value. A bond length (or angle) with $|Z| > 5$ is considered an outlier worth inspection. RMSZ is the root-mean-square of all Z scores of the bond lengths (or angles).

Mol	Chain	Bond lengths		Bond angles	
		RMSZ	# Z >5	RMSZ	# Z >5
1	A	0.43	1/4480 (0.0%)	0.62	0/6113
1	B	0.41	0/4444	0.60	0/6065
1	C	0.41	0/4477	0.60	1/6108 (0.0%)
1	D	0.40	0/4418	0.59	0/6034
1	E	0.41	0/4495	0.62	1/6136 (0.0%)
1	F	0.41	0/4478	0.61	0/6111
1	G	0.41	0/4461	0.61	1/6090 (0.0%)
1	H	0.38	0/4445	0.59	0/6069
All	All	0.41	1/35698 (0.0%)	0.61	3/48726 (0.0%)

All (1) bond length outliers are listed below:

Mol	Chain	Res	Type	Atoms	Z	Observed(Å)	Ideal(Å)
1	A	377	CYS	CB-SG	-5.98	1.72	1.81

All (3) bond angle outliers are listed below:

Mol	Chain	Res	Type	Atoms	Z	Observed(°)	Ideal(°)
1	G	228	ARG	NE-CZ-NH1	-5.68	117.46	120.30
1	E	228	ARG	NE-CZ-NH1	-5.49	117.56	120.30
1	C	228	ARG	NE-CZ-NH2	-5.12	117.74	120.30

There are no chirality outliers.

There are no planarity outliers.

5.2 Too-close contacts [i](#)

In the following table, the Non-H and H(model) columns list the number of non-hydrogen atoms and hydrogen atoms in the chain respectively. The H(added) column lists the number of hydrogen

atoms added and optimized by MolProbity. The Clashes column lists the number of clashes within the asymmetric unit, whereas Symm-Clashes lists symmetry-related clashes.

Mol	Chain	Non-H	H(model)	H(added)	Clashes	Symm-Clashes
1	A	4370	0	4312	46	0
1	B	4335	0	4275	28	0
1	C	4367	0	4310	44	0
1	D	4309	0	4235	49	0
1	E	4387	0	4327	53	0
1	F	4370	0	4303	41	1
1	G	4352	0	4284	30	0
1	H	4336	0	4263	30	0
2	A	33	20	21	3	0
2	B	33	20	21	3	0
2	C	33	20	21	2	0
2	D	33	20	21	2	0
2	E	33	20	21	2	0
2	F	33	20	21	3	0
2	G	33	20	21	2	0
2	H	33	20	21	3	0
3	A	1	0	0	0	0
3	B	1	0	0	0	0
3	C	1	0	0	0	0
3	D	1	0	0	0	0
3	E	1	0	0	0	0
3	F	1	0	0	0	0
3	G	1	0	0	0	0
3	H	1	0	0	0	0
4	A	6	8	8	0	0
4	B	6	8	8	0	0
4	C	6	8	8	0	0
4	D	6	8	8	0	0
4	E	6	8	8	0	0
4	F	6	8	8	0	0
4	G	6	8	8	0	0
4	H	6	8	8	0	0
5	A	722	0	0	17	0
5	B	743	0	0	5	0
5	C	679	0	0	17	0
5	D	586	0	0	21	0
5	E	748	0	0	22	2
5	F	688	0	0	16	5
5	G	685	0	0	13	4
5	H	598	0	0	13	0
All	All	40595	224	34541	336	6

The all-atom clashscore is defined as the number of clashes found per 1000 atoms (including hydrogen atoms). The all-atom clashscore for this structure is 5.

All (336) close contacts within the same asymmetric unit are listed below, sorted by their clash magnitude.

Atom-1	Atom-2	Interatomic distance (Å)	Clash overlap (Å)
1:E:285[A]:LEU:HD12	1:E:309:VAL:HB	1.48	0.95
1:A:15[A]:LEU:HD12	1:A:40:ALA:HB3	1.55	0.89
2:D:601:TD6:H11	2:D:601:TD6:HN4A	1.39	0.88
1:D:255:GLN:HE21	1:D:409:VAL:H	1.21	0.88
1:G:518:GLU:HG3	5:G:719:HOH:O	1.73	0.87
2:E:601:TD6:HN4A	2:E:601:TD6:H11	1.38	0.86
1:A:177:GLU:O	5:A:701:HOH:O	1.94	0.85
1:A:347:VAL:O	5:A:702:HOH:O	1.95	0.85
1:F:255:GLN:HE21	1:F:409:VAL:H	1.23	0.83
1:E:304:GLU:OE1	5:E:701:HOH:O	1.97	0.83
1:E:285[B]:LEU:HD22	1:E:309:VAL:HB	1.59	0.83
1:H:255:GLN:HE21	1:H:409:VAL:H	1.26	0.83
1:B:255:GLN:HE21	1:B:409:VAL:H	1.25	0.82
1:C:255:GLN:HE21	1:C:409:VAL:H	1.24	0.82
1:C:354:GLU:OE2	5:C:701:HOH:O	1.97	0.82
1:D:15[A]:LEU:HD12	1:D:40:ALA:HB3	1.61	0.82
1:D:268:GLY:O	5:D:701:HOH:O	1.96	0.81
1:E:177:GLU:O	5:E:702:HOH:O	1.97	0.81
1:C:43:GLU:OE1	5:C:702:HOH:O	1.98	0.81
1:G:177:GLU:O	5:G:701:HOH:O	1.97	0.81
1:G:255:GLN:HE21	1:G:409:VAL:H	1.26	0.80
1:H:242:GLN:NE2	5:H:701:HOH:O	2.13	0.80
1:A:255:GLN:HE21	1:A:409:VAL:H	1.29	0.80
1:F:207[B]:GLU:OE1	5:F:701:HOH:O	2.00	0.79
1:E:255:GLN:HE21	1:E:409:VAL:H	1.28	0.78
1:G:304:GLU:OE1	5:G:702:HOH:O	2.00	0.78
1:G:277:GLN:OE1	5:G:703:HOH:O	2.02	0.78
2:B:601:TD6:HN4A	2:B:601:TD6:H11	1.49	0.77
1:E:434:LYS:NZ	5:E:706:HOH:O	2.13	0.77
1:A:304:GLU:OE1	5:A:703:HOH:O	2.03	0.77
1:E:375:ARG:HD3	5:E:896:HOH:O	1.85	0.76
2:F:601:TD6:H11	2:F:601:TD6:HN4A	1.51	0.76
1:E:146[B]:ARG:NE	5:E:710:HOH:O	2.18	0.75
1:A:486:GLU:OE1	5:A:704:HOH:O	2.04	0.75
1:E:180:ASP:OD2	5:E:703:HOH:O	2.04	0.74
1:G:43:GLU:OE1	5:G:704:HOH:O	2.04	0.74
1:C:177:GLU:O	5:C:704:HOH:O	2.05	0.74

Continued on next page...

Continued from previous page...

Atom-1	Atom-2	Interatomic distance (Å)	Clash overlap (Å)
1:E:544:GLN:OE1	5:E:704:HOH:O	2.06	0.73
1:D:269:ASN:HA	5:D:701:HOH:O	1.89	0.72
1:A:310:ASP:OD1	5:A:706:HOH:O	2.07	0.72
1:A:358:GLN:HG2	5:A:1327:HOH:O	1.89	0.72
1:C:15[A]:LEU:HD12	1:C:40:ALA:HB3	1.71	0.72
1:F:487:ARG:HA	5:F:722:HOH:O	1.88	0.72
1:C:298[A]:GLN:NE2	5:C:703:HOH:O	2.04	0.72
1:C:547:GLN:OE1	5:C:705:HOH:O	2.08	0.72
1:F:15[A]:LEU:HD12	1:F:40:ALA:HB3	1.71	0.72
1:H:1:MET:N	5:H:706:HOH:O	2.22	0.71
1:A:544:GLN:OE1	5:A:705:HOH:O	2.07	0.71
1:D:43:GLU:HG3	5:D:874:HOH:O	1.91	0.70
1:G:216:PHE:CZ	1:G:220:LYS:HE3	2.26	0.70
1:F:528:PRO:O	5:F:702:HOH:O	2.08	0.70
1:C:544:GLN:HG2	5:C:705:HOH:O	1.89	0.70
1:G:383:GLN:NE2	5:G:707:HOH:O	2.21	0.70
1:H:383:GLN:HA	5:H:715:HOH:O	1.92	0.70
1:B:15[A]:LEU:HD12	1:B:40:ALA:HB3	1.73	0.69
1:E:498:GLU:OE1	5:E:705:HOH:O	2.10	0.69
1:C:187:GLN:OE1	5:C:706:HOH:O	2.10	0.69
1:D:15[A]:LEU:HD12	1:D:40:ALA:CB	2.21	0.69
1:E:284:GLN:C	1:E:285[B]:LEU:HD23	2.13	0.69
1:F:298:GLN:NE2	5:F:705:HOH:O	2.25	0.69
1:D:514:TRP:O	1:D:518:GLU:HG2	1.92	0.68
1:A:507:LYS:HE2	5:A:1052:HOH:O	1.94	0.68
1:G:311[A]:ASP:OD2	5:G:706:HOH:O	2.12	0.67
1:H:539:ASP:HB3	5:H:726:HOH:O	1.93	0.67
1:E:146[B]:ARG:NH2	5:E:712:HOH:O	2.27	0.67
1:D:311:ASP:OD2	5:D:704:HOH:O	2.13	0.67
1:G:457:GLN:HG3	5:G:718:HOH:O	1.94	0.66
1:D:172:GLU:OE2	5:D:703:HOH:O	2.12	0.66
1:D:377:CYS:HB2	5:D:1100:HOH:O	1.96	0.66
1:G:207[A]:GLU:HG2	5:G:1213:HOH:O	1.96	0.66
1:C:377:CYS:HB2	5:C:1100:HOH:O	1.96	0.65
1:B:6:PHE:CE1	1:B:141:GLN:HG2	2.32	0.65
1:A:271:LYS:NZ	1:A:556:LEU:O	2.28	0.65
1:F:1:MET:N	5:F:706:HOH:O	2.27	0.65
1:H:6:PHE:CE1	1:H:141:GLN:HG2	2.31	0.65
1:E:6:PHE:CE1	1:E:141:GLN:HG2	2.31	0.65
1:E:196:ASP:OD2	5:E:707:HOH:O	2.13	0.65
1:F:236:LYS:NZ	5:F:709:HOH:O	2.28	0.65

Continued on next page...

Continued from previous page...

Atom-1	Atom-2	Interatomic distance (Å)	Clash overlap (Å)
1:E:146[B]:ARG:HG2	1:E:199:TRP:CZ2	2.32	0.65
1:E:528:PRO:O	5:E:709:HOH:O	2.14	0.65
1:A:15[A]:LEU:HD12	1:A:40:ALA:CB	2.24	0.64
1:F:298:GLN:NE2	5:F:707:HOH:O	2.27	0.64
1:H:375:ARG:HD3	5:H:943:HOH:O	1.96	0.64
1:H:8:ARG:NH2	1:H:43:GLU:OE2	2.32	0.63
1:F:242:GLN:HG2	5:F:733:HOH:O	1.99	0.63
1:C:15[A]:LEU:HD12	1:C:40:ALA:CB	2.29	0.63
1:A:43:GLU:HG3	5:A:1093:HOH:O	1.97	0.62
1:D:6:PHE:CE1	1:D:141:GLN:HG2	2.33	0.62
1:E:151:THR:HG21	5:E:1347:HOH:O	1.99	0.62
1:C:457:GLN:HG3	5:C:734:HOH:O	1.99	0.61
1:F:527:THR:HG22	5:F:753:HOH:O	2.00	0.61
2:A:601:TD6:C11	2:A:601:TD6:HN4A	2.14	0.61
1:E:71[B]:GLN:HE21	1:E:72:PRO:HD2	1.65	0.61
1:H:434:LYS:NZ	5:H:712:HOH:O	2.33	0.61
1:D:151:THR:HG21	5:D:1204:HOH:O	2.01	0.60
1:E:146[B]:ARG:HH11	1:E:188:ARG:NH2	2.00	0.60
1:A:15[A]:LEU:HD13	1:A:41:ALA:N	2.17	0.60
1:C:181:THR:O	5:C:707:HOH:O	2.15	0.60
1:D:554:SER:O	5:D:701:HOH:O	2.16	0.59
1:F:6:PHE:CE1	1:F:141:GLN:HG2	2.37	0.59
1:A:15[B]:LEU:HD21	1:A:41:ALA:HB2	1.84	0.59
1:F:312:ILE:HG23	5:F:1195:HOH:O	2.01	0.59
1:G:298[A]:GLN:NE2	5:G:705:HOH:O	2.11	0.59
2:E:601:TD6:HN4A	2:E:601:TD6:C11	2.13	0.59
2:H:601:TD6:C11	2:H:601:TD6:HN4A	2.15	0.58
1:E:465:ILE:HD11	1:E:521:PHE:HZ	1.69	0.58
1:F:255:GLN:NE2	1:F:409:VAL:H	1.99	0.58
1:D:1:MET:N	5:D:714:HOH:O	2.35	0.58
1:A:372:LEU:HD22	1:A:535:MET:SD	2.43	0.58
1:C:456[A]:ARG:NH2	1:C:505:GLU:OE1	2.37	0.57
1:E:498:GLU:HB3	5:E:962:HOH:O	2.04	0.57
1:B:15[A]:LEU:HD12	1:B:40:ALA:CB	2.34	0.57
1:D:457:GLN:HG3	5:D:733:HOH:O	2.04	0.57
1:D:9:ARG:NE	5:D:702:HOH:O	2.11	0.56
1:C:15[B]:LEU:HD23	1:C:41:ALA:HA	1.87	0.56
1:F:15[A]:LEU:HD12	1:F:40:ALA:CB	2.34	0.56
1:G:351:ARG:HG2	1:G:351:ARG:NH2	2.19	0.56
1:D:527:THR:HG23	1:D:529:THR:OG1	2.04	0.56
1:B:15[B]:LEU:HD23	1:B:41:ALA:HA	1.87	0.56

Continued on next page...

Continued from previous page...

Atom-1	Atom-2	Interatomic distance (Å)	Clash overlap (Å)
1:B:1:MET:HE2	5:B:718:HOH:O	2.06	0.55
1:B:313:GLU:OE2	5:B:701:HOH:O	2.18	0.55
1:A:6:PHE:CE1	1:A:141:GLN:HG2	2.41	0.55
1:B:312:ILE:HD11	1:B:316:LEU:HD21	1.89	0.55
1:E:285[A]:LEU:HD12	1:E:309:VAL:CB	2.30	0.55
1:A:416:SER:HB3	2:A:601:TD6:H13A	1.89	0.54
1:E:377[B]:CYS:SG	1:E:403:LEU:HA	2.46	0.54
1:E:377[B]:CYS:SG	1:E:404:PRO:HD3	2.47	0.54
1:D:253:LEU:HD11	1:D:413:ARG:HG3	1.89	0.54
1:F:341:LYS:NZ	5:F:714:HOH:O	2.39	0.54
2:G:601:TD6:C11	2:G:601:TD6:HN4A	2.20	0.54
1:A:15[B]:LEU:CD2	1:A:41:ALA:HB2	2.38	0.54
1:H:498:GLU:HG2	1:H:499:HIS:N	2.22	0.54
1:C:498:GLU:HG2	1:C:499:HIS:N	2.23	0.53
1:D:255:GLN:NE2	1:D:409:VAL:H	1.98	0.53
1:G:515:GLN:NE2	5:G:723:HOH:O	2.42	0.53
1:H:253:LEU:HD11	1:H:413:ARG:HG3	1.90	0.53
1:B:177:GLU:O	5:B:702:HOH:O	2.18	0.53
1:D:382:GLU:HG3	1:D:383:GLN:HG2	1.90	0.53
1:E:253:LEU:HD11	1:E:413:ARG:HG3	1.89	0.53
1:D:158:THR:HA	5:D:853:HOH:O	2.08	0.53
1:D:342:ARG:HD3	5:D:913:HOH:O	2.09	0.53
2:B:601:TD6:HN4A	2:B:601:TD6:C11	2.18	0.52
1:D:15[A]:LEU:HD13	1:D:41:ALA:N	2.24	0.52
2:D:601:TD6:HN4A	2:D:601:TD6:C11	2.17	0.52
1:B:15[B]:LEU:HD21	1:B:41:ALA:HB2	1.90	0.52
1:C:15[B]:LEU:HD23	1:C:41:ALA:CA	2.40	0.52
1:F:15[B]:LEU:HD23	1:F:41:ALA:HA	1.92	0.52
1:E:1:MET:N	5:E:721:HOH:O	2.36	0.52
1:E:285[B]:LEU:HD23	1:E:285[B]:LEU:N	2.25	0.52
1:F:15[A]:LEU:HD13	1:F:41:ALA:N	2.24	0.52
1:E:71[B]:GLN:HB3	1:E:72:PRO:HD2	1.92	0.52
1:A:232:GLU:HG2	5:A:719:HOH:O	2.09	0.51
1:H:255:GLN:NE2	1:H:409:VAL:H	2.03	0.51
1:C:221:ARG:NH2	5:C:722:HOH:O	2.36	0.51
1:A:1:MET:HG3	1:A:2:SER:N	2.25	0.51
1:B:255:GLN:NE2	1:B:409:VAL:H	2.02	0.51
1:C:207[A]:GLU:HG2	5:C:976:HOH:O	2.11	0.51
1:B:15[A]:LEU:HD13	1:B:41:ALA:N	2.25	0.51
1:C:6:PHE:CE1	1:C:141:GLN:HG2	2.45	0.51
1:E:3:VAL:HB	1:E:173:PRO:HD2	1.92	0.51

Continued on next page...

Continued from previous page...

Atom-1	Atom-2	Interatomic distance (Å)	Clash overlap (Å)
1:F:366:ALA:HB1	5:F:1245:HOH:O	2.11	0.51
1:F:302:GLU:HA	5:F:1152:HOH:O	2.10	0.50
2:F:601:TD6:HN4A	2:F:601:TD6:C11	2.23	0.50
1:A:160[B]:HIS:HE1	1:A:204:PRO:O	1.94	0.50
1:A:15[B]:LEU:HD23	1:A:41:ALA:HA	1.94	0.50
1:G:1:MET:N	5:G:727:HOH:O	2.45	0.50
1:D:46:ALA:HB1	5:D:812:HOH:O	2.12	0.50
1:E:235:LYS:HB2	1:E:235:LYS:NZ	2.27	0.50
1:G:327:ILE:HD12	1:G:327:ILE:N	2.26	0.49
1:B:232:GLU:HG3	1:B:236:LYS:HE2	1.92	0.49
2:G:601:TD6:HN4A	2:G:601:TD6:H11	1.76	0.49
1:A:3:VAL:HB	1:A:173:PRO:HD2	1.94	0.49
1:D:327:ILE:N	1:D:327:ILE:HD12	2.27	0.49
1:B:15[B]:LEU:HD23	1:B:41:ALA:CA	2.43	0.49
1:E:134:ILE:HD11	1:E:155:ALA:HB2	1.95	0.49
1:F:527:THR:HG23	1:F:529:THR:OG1	2.12	0.49
1:D:15[A]:LEU:CD1	1:D:40:ALA:HB3	2.37	0.49
1:G:9:ARG:HD2	1:G:181:THR:O	2.12	0.48
1:C:15[A]:LEU:HD13	1:C:41:ALA:N	2.28	0.48
1:H:151:THR:HG21	5:H:1226:HOH:O	2.12	0.48
1:E:283:VAL:HG12	1:E:285[B]:LEU:HD21	1.95	0.48
1:A:298:GLN:NE2	5:A:732:HOH:O	2.46	0.48
1:E:340:GLU:HG3	5:E:1021:HOH:O	2.13	0.48
1:G:6:PHE:CE1	1:G:141:GLN:HG2	2.48	0.48
1:A:201:ARG:NH1	5:A:722:HOH:O	2.39	0.48
1:A:465:ILE:HD11	1:A:521:PHE:HZ	1.79	0.48
1:B:15[B]:LEU:CD2	1:B:41:ALA:HB2	2.44	0.48
1:H:293:ARG:NH2	1:H:550[A]:LEU:HD11	2.29	0.48
1:F:311[A]:ASP:OD2	5:F:703:HOH:O	2.20	0.48
1:C:29:ALA:HB2	1:C:58:LEU:HD22	1.95	0.48
1:D:554:SER:HB3	5:D:701:HOH:O	2.13	0.48
1:A:1:MET:N	5:A:721:HOH:O	2.38	0.48
1:B:15[A]:LEU:HD13	1:B:41:ALA:CA	2.43	0.48
1:C:311:ASP:OD2	5:C:708:HOH:O	2.20	0.48
2:C:601:TD6:H11	2:C:601:TD6:HN4A	1.77	0.48
1:A:434:LYS:NZ	5:A:707:HOH:O	2.15	0.47
1:H:327:ILE:N	1:H:327:ILE:HD12	2.28	0.47
1:H:24[A]:ARG:HG2	5:H:789:HOH:O	2.14	0.47
1:A:302:GLU:HA	5:A:827:HOH:O	2.13	0.47
1:C:15[B]:LEU:CD2	1:C:41:ALA:N	2.77	0.47
1:D:9:ARG:NH2	5:D:702:HOH:O	2.43	0.47

Continued on next page...

Continued from previous page...

Atom-1	Atom-2	Interatomic distance (Å)	Clash overlap (Å)
1:D:3:VAL:HB	1:D:173:PRO:HD2	1.97	0.47
1:D:8:ARG:NH2	1:D:43:GLU:OE2	2.41	0.47
1:H:343:GLN:OE1	5:H:704:HOH:O	2.20	0.47
1:G:253:LEU:HD11	1:G:413:ARG:HG3	1.97	0.47
1:C:15[B]:LEU:HD22	1:C:40:ALA:HB3	1.96	0.46
1:F:457:GLN:HG3	5:F:718:HOH:O	2.14	0.46
1:F:327:ILE:N	1:F:327:ILE:HD12	2.30	0.46
1:H:477:LEU:HD11	1:H:547:GLN:HE21	1.79	0.46
1:D:498:GLU:HG2	1:D:499:HIS:N	2.29	0.46
1:B:68:VAL:HG11	1:B:432:SER:HB3	1.96	0.46
1:C:15[B]:LEU:HD22	1:C:40:ALA:CB	2.45	0.46
1:C:255:GLN:NE2	1:C:409:VAL:H	2.03	0.46
1:C:8:ARG:HD2	5:C:966:HOH:O	2.15	0.46
2:A:601:TD6:HN4A	2:A:601:TD6:H11	1.79	0.46
1:B:327:ILE:HD12	1:B:327:ILE:N	2.31	0.46
1:D:460:ALA:HB1	1:D:461:PRO:HD2	1.97	0.46
1:A:15[A]:LEU:CD1	1:A:40:ALA:HB3	2.36	0.46
1:A:134:ILE:HD11	1:A:155:ALA:HB2	1.98	0.46
1:B:460:ALA:HB1	1:B:461:PRO:HD2	1.98	0.46
1:D:255:GLN:HG2	1:D:407:TYR:O	2.16	0.46
1:E:232:GLU:HA	1:E:235:LYS:HZ2	1.81	0.46
1:G:498:GLU:OE1	1:G:510:ARG:NH2	2.49	0.46
1:A:4[A]:SER:OG	1:A:173:PRO:HB2	2.16	0.45
1:C:68:VAL:HG11	1:C:432:SER:HB3	1.98	0.45
1:C:327:ILE:N	1:C:327:ILE:HD12	2.32	0.45
1:D:346:CYS:HB2	5:D:843:HOH:O	2.14	0.45
1:F:8:ARG:NH1	5:F:711:HOH:O	2.36	0.45
1:E:386:LEU:HG	1:E:388[B]:VAL:HG13	1.97	0.45
1:H:311[A]:ASP:OD2	5:H:705:HOH:O	2.20	0.45
1:C:68:VAL:HG21	1:C:428:VAL:HG13	1.99	0.45
1:F:255:GLN:HG2	1:F:407:TYR:O	2.16	0.45
1:C:460:ALA:HB1	1:C:461:PRO:HD2	1.98	0.45
1:H:477:LEU:CD1	1:H:547:GLN:HE21	2.30	0.45
1:E:379:TYR:HB3	5:E:722:HOH:O	2.17	0.45
1:F:15[B]:LEU:HD23	1:F:41:ALA:CA	2.47	0.45
1:G:68:VAL:HG21	1:G:428:VAL:HG13	1.99	0.44
1:C:9:ARG:HH12	1:C:183:LEU:HD13	1.82	0.44
1:E:146[B]:ARG:HG3	5:E:710:HOH:O	2.16	0.44
1:D:15[B]:LEU:CD2	1:D:41:ALA:HB2	2.48	0.44
1:D:465:ILE:HD11	1:D:521:PHE:HZ	1.81	0.44
1:F:15[B]:LEU:HD21	1:F:41:ALA:HB2	1.99	0.44

Continued on next page...

Continued from previous page...

Atom-1	Atom-2	Interatomic distance (Å)	Clash overlap (Å)
1:F:255:GLN:HE21	1:F:409:VAL:N	2.04	0.44
1:A:507:LYS:CD	5:A:1188:HOH:O	2.64	0.44
1:D:134:ILE:HD11	1:D:155:ALA:HB2	1.99	0.44
1:G:342:ARG:HD3	5:G:884:HOH:O	2.17	0.44
1:F:29:ALA:HB2	1:F:58:LEU:HD22	2.00	0.44
1:H:212:ARG:NH2	5:H:709:HOH:O	2.50	0.44
1:A:68:VAL:HG21	1:A:428:VAL:HG13	1.99	0.44
1:E:215:PHE:HD1	1:E:218:ARG:CZ	2.31	0.44
1:D:15[B]:LEU:HD21	1:D:41:ALA:HB2	1.99	0.44
1:D:263:ALA:HA	1:D:266:TRP:NE1	2.32	0.44
1:B:1:MET:N	5:B:718:HOH:O	2.42	0.44
1:E:327:ILE:HD12	1:E:327:ILE:N	2.32	0.44
1:F:392:LEU:HB2	2:F:601:TD6:O2B	2.18	0.44
1:D:15[B]:LEU:HD23	1:D:41:ALA:HA	1.99	0.44
1:A:460:ALA:HB1	1:A:461:PRO:HD2	2.00	0.43
1:F:253:LEU:HD11	1:F:413:ARG:HG3	2.00	0.43
1:C:15[A]:LEU:CD1	1:C:40:ALA:HB3	2.46	0.43
1:A:15[B]:LEU:CD2	1:A:41:ALA:CA	2.97	0.43
1:A:15[A]:LEU:HD13	1:A:41:ALA:CA	2.48	0.43
1:E:221:ARG:NH2	5:E:720:HOH:O	2.36	0.43
1:E:285[B]:LEU:HD22	1:E:309:VAL:CB	2.39	0.43
1:G:197:LYS:HB2	1:G:198:PRO:HD2	2.00	0.43
1:G:498:GLU:HG2	1:G:499:HIS:N	2.32	0.43
1:E:341:LYS:NZ	5:E:741:HOH:O	2.51	0.43
1:F:15[B]:LEU:CD2	1:F:41:ALA:HB2	2.49	0.43
1:H:392:LEU:HB2	2:H:601:TD6:O2B	2.19	0.43
1:H:460:ALA:HB1	1:H:461:PRO:HD2	2.01	0.43
1:B:129:HIS:N	1:B:130:PRO:CD	2.82	0.43
1:F:498:GLU:HG2	1:F:499:HIS:N	2.32	0.43
1:E:235:LYS:NZ	5:E:740:HOH:O	2.51	0.43
1:F:361:ILE:HG23	1:F:364[B]:ARG:NH1	2.34	0.43
1:H:3:VAL:HB	1:H:173:PRO:HD2	2.01	0.43
1:A:15[B]:LEU:HD22	1:A:41:ALA:N	2.34	0.43
1:C:14:ILE:HG12	1:C:152:ILE:HD11	2.01	0.43
1:C:255:GLN:HG2	1:C:407:TYR:O	2.19	0.43
1:D:68:VAL:HG11	1:D:432:SER:HB3	2.00	0.42
1:H:236:LYS:HD3	5:H:979:HOH:O	2.18	0.42
1:E:255:GLN:HG2	1:E:407:TYR:O	2.20	0.42
1:E:498:GLU:CB	5:E:962:HOH:O	2.65	0.42
1:B:253:LEU:HD11	1:B:413:ARG:HG3	2.01	0.42
1:E:232:GLU:CD	1:E:235:LYS:HZ1	2.22	0.42

Continued on next page...

Continued from previous page...

Atom-1	Atom-2	Interatomic distance (Å)	Clash overlap (Å)
1:F:512:GLN:HG2	1:F:516:GLU:CD	2.40	0.42
1:E:232:GLU:HG2	5:E:725:HOH:O	2.19	0.42
1:D:221:ARG:HD3	5:D:713:HOH:O	2.19	0.42
1:D:293:ARG:NH2	1:D:550:LEU:HD11	2.35	0.42
1:D:459:SER:O	5:D:705:HOH:O	2.22	0.42
1:E:465:ILE:HD11	1:E:521:PHE:CZ	2.53	0.42
1:F:315:ARG:HG3	1:F:315:ARG:HH11	1.84	0.42
1:H:498:GLU:OE1	1:H:510:ARG:NH2	2.53	0.42
1:A:327:ILE:N	1:A:327:ILE:HD12	2.35	0.42
1:B:392:LEU:HB2	2:B:601:TD6:O2B	2.19	0.42
1:G:276:LEU:HG	1:G:349:ILE:HD11	2.02	0.42
1:C:40:ALA:HB2	5:C:754:HOH:O	2.19	0.42
1:H:462:LEU:O	1:H:530:THR:HA	2.19	0.42
1:F:15[A]:LEU:HD13	1:F:41:ALA:CA	2.49	0.42
1:B:90:LEU:HD21	1:B:130:PRO:HG3	2.02	0.42
1:F:134:ILE:HD11	1:F:155:ALA:HB2	2.02	0.42
1:B:498:GLU:HG2	1:B:499:HIS:N	2.34	0.41
1:A:68:VAL:HG11	1:A:432:SER:HB3	2.02	0.41
1:B:255:GLN:HG2	1:B:407:TYR:O	2.19	0.41
1:C:507:LYS:HB2	1:C:507:LYS:HE3	1.80	0.41
1:A:253:LEU:HD11	1:A:413:ARG:HG3	2.02	0.41
1:C:70:LYS:NZ	5:C:729:HOH:O	2.47	0.41
1:C:465:ILE:HD11	1:C:521:PHE:HZ	1.83	0.41
1:C:172:GLU:HB3	1:C:173:PRO:HA	2.03	0.41
1:C:485:ARG:HG2	1:C:490:LEU:HG	2.03	0.41
1:D:340:GLU:HB3	5:D:729:HOH:O	2.20	0.41
1:F:462:LEU:O	1:F:530:THR:HA	2.20	0.41
1:H:416:SER:HB3	2:H:601:TD6:H13A	2.01	0.41
1:H:498:GLU:HG3	5:H:1257:HOH:O	2.20	0.41
1:G:255:GLN:NE2	1:G:409:VAL:H	2.05	0.41
1:G:462:LEU:O	1:G:530:THR:HA	2.20	0.41
1:A:197:LYS:NZ	5:A:717:HOH:O	2.33	0.41
1:D:15[B]:LEU:HD23	1:D:41:ALA:CA	2.50	0.41
1:G:351:ARG:HG2	1:G:351:ARG:HH21	1.85	0.41
1:A:255:GLN:HG2	1:A:407:TYR:O	2.21	0.41
1:A:263:ALA:HA	1:A:266:TRP:NE1	2.36	0.41
1:E:283:VAL:HG12	1:E:285[B]:LEU:CD2	2.50	0.41
1:F:14:ILE:HG12	1:F:152:ILE:HD11	2.02	0.41
1:H:68:VAL:HG11	1:H:432:SER:HB3	2.01	0.41
1:C:9:ARG:NE	5:C:707:HOH:O	2.10	0.40
1:D:255:GLN:HE21	1:D:409:VAL:N	2.02	0.40

Continued on next page...

Continued from previous page...

Atom-1	Atom-2	Interatomic distance (Å)	Clash overlap (Å)
1:E:460:ALA:HB1	1:E:461:PRO:HD2	2.03	0.40
1:C:276:LEU:HG	1:C:349:ILE:HD11	2.04	0.40
2:C:601:TD6:HN4A	2:C:601:TD6:C11	2.34	0.40
1:G:351:ARG:HH21	1:G:351:ARG:CG	2.34	0.40
1:A:377:CYS:SG	1:A:402:GLN:O	2.79	0.40
1:B:14:ILE:HG12	1:B:152:ILE:HD11	2.04	0.40
1:B:24:ARG:NE	5:B:703:HOH:O	2.19	0.40
1:D:245:GLY:O	1:D:344:PRO:HA	2.21	0.40
1:D:311:ASP:HB2	5:D:1029:HOH:O	2.21	0.40
1:E:347:VAL:HG23	1:E:348:GLU:HG3	2.02	0.40
1:E:284:GLN:O	1:E:285[B]:LEU:HD23	2.21	0.40
1:G:71:GLN:HB3	1:G:72:PRO:HD2	2.03	0.40

All (6) symmetry-related close contacts are listed below. The label for Atom-2 includes the symmetry operator and encoded unit-cell translations to be applied.

Atom-1	Atom-2	Interatomic distance (Å)	Clash overlap (Å)
5:F:927:HOH:O	5:G:1273:HOH:O[1_465]	2.03	0.17
5:F:936:HOH:O	5:G:1375:HOH:O[1_465]	2.08	0.12
1:F:364[B]:ARG:NH2	5:E:914:HOH:O[1_455]	2.10	0.10
5:E:1424:HOH:O	5:F:1053:HOH:O[1_655]	2.11	0.09
5:F:798:HOH:O	5:G:1273:HOH:O[1_465]	2.13	0.07
5:F:729:HOH:O	5:G:1273:HOH:O[1_465]	2.16	0.04

5.3 Torsion angles [i](#)

5.3.1 Protein backbone [i](#)

In the following table, the Percentiles column shows the percent Ramachandran outliers of the chain as a percentile score with respect to all X-ray entries followed by that with respect to entries of similar resolution.

The Analysed column shows the number of residues for which the backbone conformation was analysed, and the total number of residues.

Mol	Chain	Analysed	Favoured	Allowed	Outliers	Percentiles
1	A	562/556 (101%)	548 (98%)	13 (2%)	1 (0%)	47 26
1	B	558/556 (100%)	545 (98%)	12 (2%)	1 (0%)	47 26
1	C	561/556 (101%)	550 (98%)	10 (2%)	1 (0%)	47 26

Continued on next page...

Continued from previous page...

Mol	Chain	Analysed	Favoured	Allowed	Outliers	Percentiles	
1	D	557/556 (100%)	545 (98%)	11 (2%)	1 (0%)	47	26
1	E	564/556 (101%)	551 (98%)	12 (2%)	1 (0%)	47	26
1	F	561/556 (101%)	548 (98%)	13 (2%)	0	100	100
1	G	561/556 (101%)	548 (98%)	12 (2%)	1 (0%)	47	26
1	H	560/556 (101%)	547 (98%)	12 (2%)	1 (0%)	47	26
All	All	4484/4448 (101%)	4382 (98%)	95 (2%)	7 (0%)	47	26

All (7) Ramachandran outliers are listed below:

Mol	Chain	Res	Type
1	A	391	SER
1	D	391	SER
1	C	391	SER
1	G	391	SER
1	H	391	SER
1	B	391	SER
1	E	391	SER

5.3.2 Protein sidechains [i](#)

In the following table, the Percentiles column shows the percent sidechain outliers of the chain as a percentile score with respect to all X-ray entries followed by that with respect to entries of similar resolution.

The Analysed column shows the number of residues for which the sidechain conformation was analysed, and the total number of residues.

Mol	Chain	Analysed	Rotameric	Outliers	Percentiles	
1	A	453/452 (100%)	449 (99%)	4 (1%)	78	65
1	B	449/452 (99%)	444 (99%)	5 (1%)	73	57
1	C	453/452 (100%)	449 (99%)	4 (1%)	78	65
1	D	444/452 (98%)	440 (99%)	4 (1%)	78	65
1	E	456/452 (101%)	449 (98%)	7 (2%)	65	44
1	F	453/452 (100%)	449 (99%)	4 (1%)	78	65
1	G	450/452 (100%)	446 (99%)	4 (1%)	78	65
1	H	445/452 (98%)	441 (99%)	4 (1%)	78	65
All	All	3603/3616 (100%)	3567 (99%)	36 (1%)	76	61

All (36) residues with a non-rotameric sidechain are listed below:

Mol	Chain	Res	Type
1	A	87	TYR
1	A	325	ARG
1	A	391	SER
1	A	447	TYR
1	B	1	MET
1	B	87	TYR
1	B	325	ARG
1	B	391	SER
1	B	447	TYR
1	C	87	TYR
1	C	325	ARG
1	C	391	SER
1	C	447	TYR
1	D	87	TYR
1	D	325	ARG
1	D	347	VAL
1	D	447	TYR
1	E	24	ARG
1	E	87	TYR
1	E	285[A]	LEU
1	E	285[B]	LEU
1	E	325	ARG
1	E	391	SER
1	E	447	TYR
1	F	87	TYR
1	F	178	MET
1	F	325	ARG
1	F	447	TYR
1	G	87	TYR
1	G	325	ARG
1	G	391	SER
1	G	447	TYR
1	H	87	TYR
1	H	325	ARG
1	H	391	SER
1	H	447	TYR

Sometimes sidechains can be flipped to improve hydrogen bonding and reduce clashes. All (13) such sidechains are listed below:

Mol	Chain	Res	Type
1	A	255	GLN

Continued on next page...

Continued from previous page...

Mol	Chain	Res	Type
1	A	512	GLN
1	B	255	GLN
1	C	255	GLN
1	D	255	GLN
1	D	383	GLN
1	E	255	GLN
1	E	555	HIS
1	F	255	GLN
1	F	277	GLN
1	G	255	GLN
1	H	255	GLN
1	H	547	GLN

5.3.3 RNA [i](#)

There are no RNA molecules in this entry.

5.4 Non-standard residues in protein, DNA, RNA chains [i](#)

There are no non-standard protein/DNA/RNA residues in this entry.

5.5 Carbohydrates [i](#)

There are no monosaccharides in this entry.

5.6 Ligand geometry [i](#)

Of 24 ligands modelled in this entry, 8 are monoatomic - leaving 16 for Mogul analysis.

In the following table, the Counts columns list the number of bonds (or angles) for which Mogul statistics could be retrieved, the number of bonds (or angles) that are observed in the model and the number of bonds (or angles) that are defined in the Chemical Component Dictionary. The Link column lists molecule types, if any, to which the group is linked. The Z score for a bond length (or angle) is the number of standard deviations the observed value is removed from the expected value. A bond length (or angle) with $|Z| > 2$ is considered an outlier worth inspection. RMSZ is the root-mean-square of all Z scores of the bond lengths (or angles).

Mol	Type	Chain	Res	Link	Bond lengths			Bond angles		
					Counts	RMSZ	$\# Z > 2$	Counts	RMSZ	$\# Z > 2$
2	TD6	C	601	3	29,34,34	2.31	13 (44%)	35,50,50	2.31	15 (42%)

Mol	Type	Chain	Res	Link	Bond lengths			Bond angles		
					Counts	RMSZ	# Z > 2	Counts	RMSZ	# Z > 2
2	TD6	D	601	3	29,34,34	2.61	5 (17%)	35,50,50	1.94	10 (28%)
4	GOL	H	603	-	5,5,5	0.38	0	5,5,5	0.48	0
2	TD6	B	601	3	29,34,34	2.54	4 (13%)	35,50,50	1.91	11 (31%)
2	TD6	F	601	3	29,34,34	2.83	5 (17%)	35,50,50	2.05	9 (25%)
2	TD6	G	601	3	29,34,34	2.61	6 (20%)	35,50,50	1.86	11 (31%)
4	GOL	A	603	-	5,5,5	0.60	0	5,5,5	0.56	0
4	GOL	E	603	-	5,5,5	0.60	0	5,5,5	0.49	0
4	GOL	F	603	-	5,5,5	0.56	0	5,5,5	0.62	0
4	GOL	G	603	-	5,5,5	0.55	0	5,5,5	0.39	0
2	TD6	E	601	3	29,34,34	2.73	4 (13%)	35,50,50	1.81	7 (20%)
4	GOL	C	603	-	5,5,5	0.56	0	5,5,5	0.48	0
2	TD6	A	601	3	29,34,34	2.44	5 (17%)	35,50,50	1.77	9 (25%)
2	TD6	H	601	3	29,34,34	2.41	4 (13%)	35,50,50	2.01	10 (28%)
4	GOL	B	603	-	5,5,5	0.65	0	5,5,5	0.58	0
4	GOL	D	603	-	5,5,5	0.49	0	5,5,5	0.48	0

In the following table, the Chirals column lists the number of chiral outliers, the number of chiral centers analysed, the number of these observed in the model and the number defined in the Chemical Component Dictionary. Similar counts are reported in the Torsion and Rings columns. '-' means no outliers of that kind were identified.

Mol	Type	Chain	Res	Link	Chirals	Torsions	Rings
2	TD6	C	601	3	-	6/21/26/26	0/2/2/2
2	TD6	D	601	3	-	4/21/26/26	0/2/2/2
4	GOL	H	603	-	-	2/4/4/4	-
2	TD6	B	601	3	-	3/21/26/26	0/2/2/2
2	TD6	F	601	3	-	5/21/26/26	0/2/2/2
2	TD6	G	601	3	-	4/21/26/26	0/2/2/2
4	GOL	A	603	-	-	2/4/4/4	-
4	GOL	E	603	-	-	2/4/4/4	-
4	GOL	F	603	-	-	1/4/4/4	-
4	GOL	G	603	-	-	2/4/4/4	-
2	TD6	E	601	3	-	4/21/26/26	0/2/2/2
4	GOL	C	603	-	-	2/4/4/4	-
2	TD6	A	601	3	-	4/21/26/26	0/2/2/2
2	TD6	H	601	3	-	4/21/26/26	0/2/2/2
4	GOL	B	603	-	-	2/4/4/4	-
4	GOL	D	603	-	-	2/4/4/4	-

All (46) bond length outliers are listed below:

Mol	Chain	Res	Type	Atoms	Z	Observed(Å)	Ideal(Å)
2	F	601	TD6	C6-C5	13.26	1.56	1.50
2	E	601	TD6	C6-C5	12.92	1.56	1.50
2	G	601	TD6	C6-C5	12.20	1.56	1.50
2	D	601	TD6	C6-C5	12.13	1.56	1.50
2	B	601	TD6	C6-C5	11.60	1.56	1.50
2	A	601	TD6	C6-C5	11.03	1.55	1.50
2	H	601	TD6	C6-C5	11.02	1.55	1.50
2	C	601	TD6	C2'-N3'	-5.06	1.25	1.34
2	C	601	TD6	PA-O2A	-3.93	1.36	1.55
2	C	601	TD6	C6-C5	3.82	1.52	1.50
2	F	601	TD6	CM4-C4	3.45	1.56	1.49
2	C	601	TD6	PB-O3B	-3.37	1.41	1.54
2	C	601	TD6	C4-N3	-3.27	1.32	1.39
2	E	601	TD6	CM4-C4	3.22	1.56	1.49
2	A	601	TD6	CM4-C4	3.15	1.56	1.49
2	D	601	TD6	CM4-C4	3.08	1.56	1.49
2	B	601	TD6	CM4-C4	3.07	1.56	1.49
2	C	601	TD6	C4'-N4'	-3.02	1.26	1.34
2	C	601	TD6	PB-O1B	-2.92	1.43	1.54
2	G	601	TD6	CM4-C4	2.90	1.55	1.49
2	H	601	TD6	C5'-C4'	-2.86	1.38	1.42
2	H	601	TD6	CM4-C4	2.85	1.55	1.49
2	D	601	TD6	CM2-C2'	2.78	1.57	1.49
2	F	601	TD6	CM2-C2'	2.77	1.57	1.49
2	H	601	TD6	CM2-C2'	2.71	1.57	1.49
2	B	601	TD6	CM2-C2'	2.69	1.57	1.49
2	C	601	TD6	C7'-C5'	2.66	1.56	1.51
2	C	601	TD6	C13-CLC	-2.63	1.44	1.50
2	G	601	TD6	CM2-C2'	2.50	1.56	1.49
2	A	601	TD6	CM2-C2'	2.47	1.56	1.49
2	E	601	TD6	CM2-C2'	2.43	1.56	1.49
2	C	601	TD6	PA-O1A	-2.37	1.42	1.50
2	G	601	TD6	C7'-C5'	2.34	1.56	1.51
2	C	601	TD6	C5'-C4'	-2.31	1.38	1.42
2	F	601	TD6	C7'-C5'	2.22	1.55	1.51
2	F	601	TD6	C4-N3	-2.21	1.35	1.39
2	A	601	TD6	C6-C7	2.14	1.58	1.50
2	E	601	TD6	C5'-C4'	-2.13	1.39	1.42
2	C	601	TD6	C2'-N1'	-2.10	1.31	1.34
2	A	601	TD6	C7'-C5'	2.08	1.55	1.51
2	B	601	TD6	C7'-C5'	2.08	1.55	1.51
2	G	601	TD6	C5'-C4'	-2.07	1.39	1.42

Continued on next page...

Continued from previous page...

Mol	Chain	Res	Type	Atoms	Z	Observed(Å)	Ideal(Å)
2	D	601	TD6	C7'-C5'	2.06	1.55	1.51
2	D	601	TD6	C4-N3	-2.05	1.35	1.39
2	G	601	TD6	C6-C7	2.02	1.57	1.50
2	C	601	TD6	OL2-CLC	-2.02	1.24	1.30

All (82) bond angle outliers are listed below:

Mol	Chain	Res	Type	Atoms	Z	Observed(°)	Ideal(°)
2	C	601	TD6	C5-C4-N3	5.67	119.52	107.66
2	F	601	TD6	C13-CLB-C11	-5.26	106.61	114.45
2	C	601	TD6	C6'-N1'-C2'	5.08	124.60	115.96
2	H	601	TD6	CM2-C2'-N1'	4.75	122.37	117.14
2	C	601	TD6	C6-C5-C4	4.55	131.09	127.43
2	F	601	TD6	C6'-N1'-C2'	4.34	123.35	115.96
2	B	601	TD6	C5-C4-N3	4.34	116.73	107.66
2	E	601	TD6	C13-CLB-C11	-4.26	108.11	114.45
2	G	601	TD6	C5-C4-N3	4.23	116.50	107.66
2	H	601	TD6	CLB-C11-C2	-4.22	100.13	112.34
2	D	601	TD6	C13-CLB-C11	-4.15	108.27	114.45
2	C	601	TD6	C5'-C6'-N1'	-4.10	116.98	123.82
2	E	601	TD6	C6'-N1'-C2'	3.96	122.69	115.96
2	H	601	TD6	C5-C4-N3	3.94	115.89	107.66
2	E	601	TD6	C5-C4-N3	3.91	115.83	107.66
2	F	601	TD6	C5-C4-N3	3.90	115.82	107.66
2	D	601	TD6	C6'-N1'-C2'	3.84	122.49	115.96
2	D	601	TD6	C5-C4-N3	3.81	115.62	107.66
2	A	601	TD6	C5-C4-N3	3.80	115.60	107.66
2	F	601	TD6	N1'-C2'-N3'	-3.76	119.06	125.54
2	H	601	TD6	C6'-N1'-C2'	3.74	122.32	115.96
2	H	601	TD6	N1'-C2'-N3'	-3.73	119.12	125.54
2	B	601	TD6	C6'-N1'-C2'	3.70	122.27	115.96
2	A	601	TD6	C6'-N1'-C2'	3.70	122.25	115.96
2	F	601	TD6	CM2-C2'-N1'	3.61	121.11	117.14
2	G	601	TD6	C6'-N1'-C2'	3.60	122.08	115.96
2	G	601	TD6	CM2-C2'-N1'	3.59	121.08	117.14
2	E	601	TD6	N1'-C2'-N3'	-3.53	119.46	125.54
2	G	601	TD6	CLB-C11-C2	-3.52	102.15	112.34
2	D	601	TD6	CM2-C2'-N1'	3.52	121.01	117.14
2	B	601	TD6	C13-CLB-C11	-3.45	109.31	114.45
2	A	601	TD6	CLB-C11-C2	-3.45	102.37	112.34
2	E	601	TD6	CM2-C2'-N1'	3.44	120.92	117.14
2	G	601	TD6	N1'-C2'-N3'	-3.36	119.76	125.54

Continued on next page...

Continued from previous page...

Mol	Chain	Res	Type	Atoms	Z	Observed(°)	Ideal(°)
2	C	601	TD6	CM2-C2'-N1'	3.34	120.81	117.14
2	D	601	TD6	C5'-C6'-N1'	-3.31	118.31	123.82
2	C	601	TD6	CM4-C4-C5	-3.24	120.52	127.60
2	B	601	TD6	C5'-C6'-N1'	-3.08	118.68	123.82
2	A	601	TD6	C5'-C6'-N1'	-3.06	118.72	123.82
2	E	601	TD6	C5'-C6'-N1'	-3.02	118.78	123.82
2	G	601	TD6	CM4-C4-C5	-3.00	121.04	127.60
2	H	601	TD6	C5'-C6'-N1'	-2.98	118.85	123.82
2	D	601	TD6	N1'-C2'-N3'	-2.97	120.43	125.54
2	A	601	TD6	N1'-C2'-N3'	-2.94	120.48	125.54
2	B	601	TD6	CM4-C4-C5	-2.90	121.27	127.60
2	F	601	TD6	C5'-C6'-N1'	-2.87	119.04	123.82
2	C	601	TD6	N4'-C4'-N3'	-2.85	113.00	117.03
2	C	601	TD6	O3B-PB-O3A	2.84	114.16	104.64
2	H	601	TD6	CM4-C4-C5	-2.83	121.42	127.60
2	H	601	TD6	C13-CLB-C11	-2.82	110.24	114.45
2	B	601	TD6	CLB-C13-CLC	-2.82	105.02	112.51
2	G	601	TD6	C5'-C6'-N1'	-2.77	119.20	123.82
2	A	601	TD6	CM2-C2'-N1'	2.77	120.19	117.14
2	D	601	TD6	CM4-C4-C5	-2.76	121.57	127.60
2	B	601	TD6	N1'-C2'-N3'	-2.74	120.83	125.54
2	F	601	TD6	CM4-C4-C5	-2.69	121.73	127.60
2	B	601	TD6	C5'-C7'-N3	-2.67	108.85	113.26
2	A	601	TD6	CM4-C4-C5	-2.65	121.81	127.60
2	G	601	TD6	C6-C5-C4	2.57	129.50	127.43
2	C	601	TD6	OL2-CLC-OL3	2.56	129.67	123.30
2	B	601	TD6	CM2-C2'-N1'	2.55	119.95	117.14
2	D	601	TD6	C6-C5-C4	-2.50	125.43	127.43
2	F	601	TD6	O3B-PB-O3A	2.45	112.83	104.64
2	C	601	TD6	OL3-CLC-C13	-2.39	115.41	123.08
2	D	601	TD6	O3B-PB-O3A	2.39	112.64	104.64
2	E	601	TD6	CM4-C4-C5	-2.38	122.39	127.60
2	A	601	TD6	OL3-CLC-C13	-2.37	115.47	123.08
2	C	601	TD6	C5'-C4'-N3'	2.34	124.92	121.24
2	C	601	TD6	N1'-C2'-N3'	-2.30	121.58	125.54
2	B	601	TD6	O3B-PB-O3A	2.29	112.33	104.64
2	C	601	TD6	CLB-C11-C2	-2.27	105.76	112.34
2	B	601	TD6	OL1-C11-CLB	-2.25	100.85	109.55
2	C	601	TD6	CM4-C4-N3	-2.19	119.93	122.69
2	G	601	TD6	OL3-CLC-C13	-2.18	116.07	123.08
2	H	601	TD6	OL3-CLC-C13	-2.16	116.14	123.08
2	H	601	TD6	O3B-PB-O3A	2.16	111.87	104.64

Continued on next page...

Continued from previous page...

Mol	Chain	Res	Type	Atoms	Z	Observed(°)	Ideal(°)
2	G	601	TD6	CLB-C13-CLC	-2.14	106.82	112.51
2	F	601	TD6	C5'-C7'-N3	-2.12	109.75	113.26
2	A	601	TD6	C5'-C7'-N3	-2.06	109.85	113.26
2	C	601	TD6	C5'-C7'-N3	-2.06	109.85	113.26
2	D	601	TD6	CLB-C13-CLC	-2.02	107.15	112.51
2	G	601	TD6	O3B-PB-O3A	2.02	111.40	104.64

There are no chirality outliers.

All (49) torsion outliers are listed below:

Mol	Chain	Res	Type	Atoms
2	A	601	TD6	OL1-C11-CLB-C13
2	A	601	TD6	CLC-C13-CLB-C11
2	B	601	TD6	C2-C11-CLB-C13
2	C	601	TD6	C2-C11-CLB-C13
2	C	601	TD6	OL1-C11-CLB-C13
2	C	601	TD6	CLC-C13-CLB-C11
2	D	601	TD6	C2-C11-CLB-C13
2	D	601	TD6	OL1-C11-CLB-C13
2	E	601	TD6	C2-C11-CLB-C13
2	E	601	TD6	OL1-C11-CLB-C13
2	F	601	TD6	C2-C11-CLB-C13
2	F	601	TD6	OL1-C11-CLB-C13
2	G	601	TD6	OL1-C11-CLB-C13
2	G	601	TD6	CLC-C13-CLB-C11
2	H	601	TD6	CLC-C13-CLB-C11
4	A	603	GOL	C1-C2-C3-O3
4	B	603	GOL	C1-C2-C3-O3
4	C	603	GOL	C1-C2-C3-O3
4	D	603	GOL	C1-C2-C3-O3
4	E	603	GOL	C1-C2-C3-O3
4	F	603	GOL	C1-C2-C3-O3
4	G	603	GOL	C1-C2-C3-O3
4	H	603	GOL	C1-C2-C3-O3
4	D	603	GOL	O2-C2-C3-O3
4	G	603	GOL	O2-C2-C3-O3
4	C	603	GOL	O2-C2-C3-O3
4	A	603	GOL	O2-C2-C3-O3
4	H	603	GOL	O2-C2-C3-O3
4	E	603	GOL	O2-C2-C3-O3
2	C	601	TD6	C4-C5-C6-C7
2	F	601	TD6	C4-C5-C6-C7

Continued on next page...

Continued from previous page...

Mol	Chain	Res	Type	Atoms
2	H	601	TD6	C4-C5-C6-C7
2	G	601	TD6	CLB-C13-CLC-OL3
2	A	601	TD6	CLB-C13-CLC-OL3
2	B	601	TD6	CLB-C13-CLC-OL3
2	E	601	TD6	CLB-C13-CLC-OL3
2	E	601	TD6	CLB-C13-CLC-OL2
2	F	601	TD6	CLB-C13-CLC-OL3
2	G	601	TD6	CLB-C13-CLC-OL2
2	C	601	TD6	CLB-C13-CLC-OL3
2	A	601	TD6	CLB-C13-CLC-OL2
2	D	601	TD6	CLB-C13-CLC-OL2
2	D	601	TD6	CLB-C13-CLC-OL3
2	B	601	TD6	CLB-C13-CLC-OL2
2	F	601	TD6	CLB-C13-CLC-OL2
2	C	601	TD6	CLB-C13-CLC-OL2
4	B	603	GOL	O2-C2-C3-O3
2	H	601	TD6	CLB-C13-CLC-OL3
2	H	601	TD6	CLB-C13-CLC-OL2

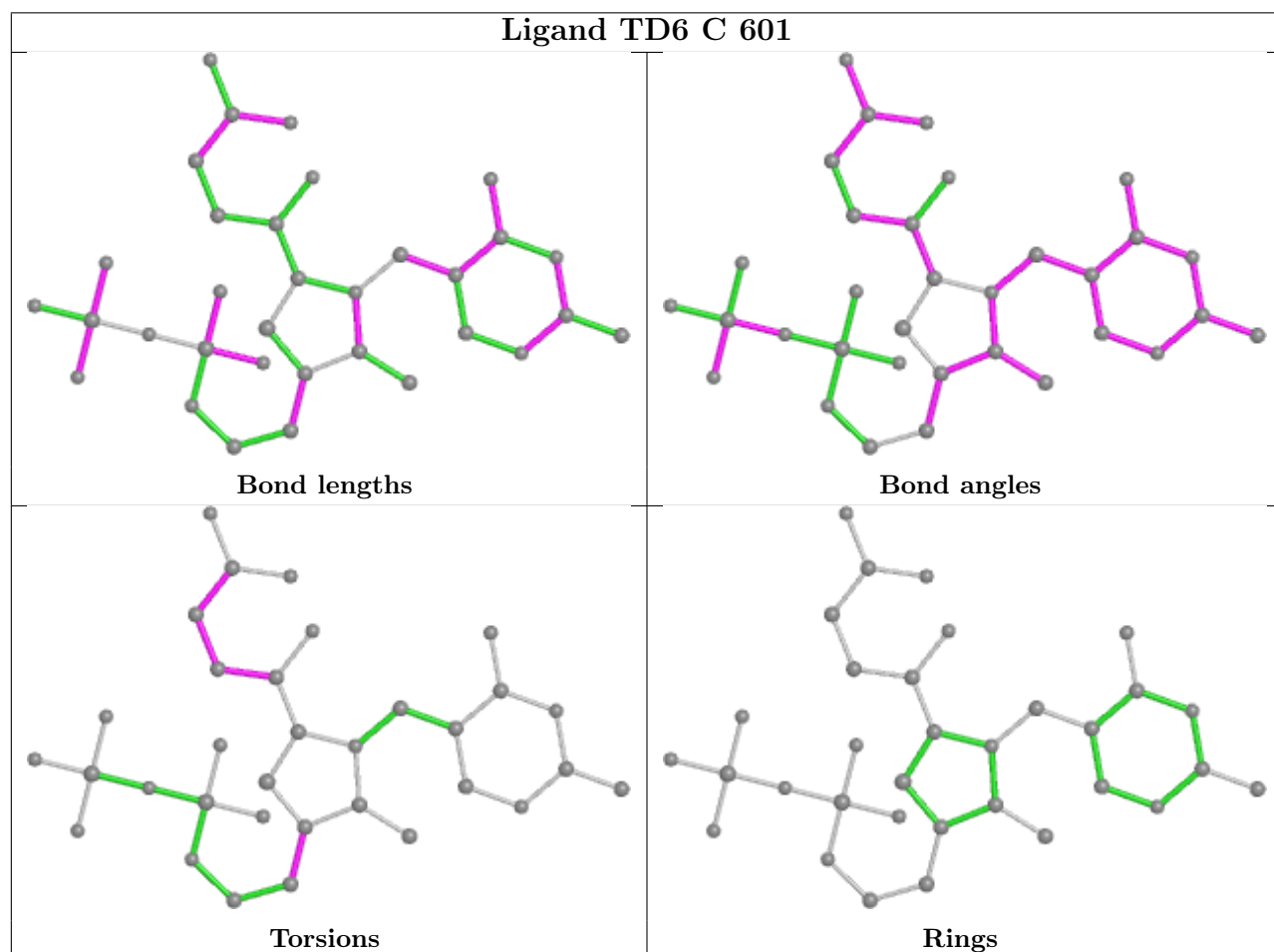
There are no ring outliers.

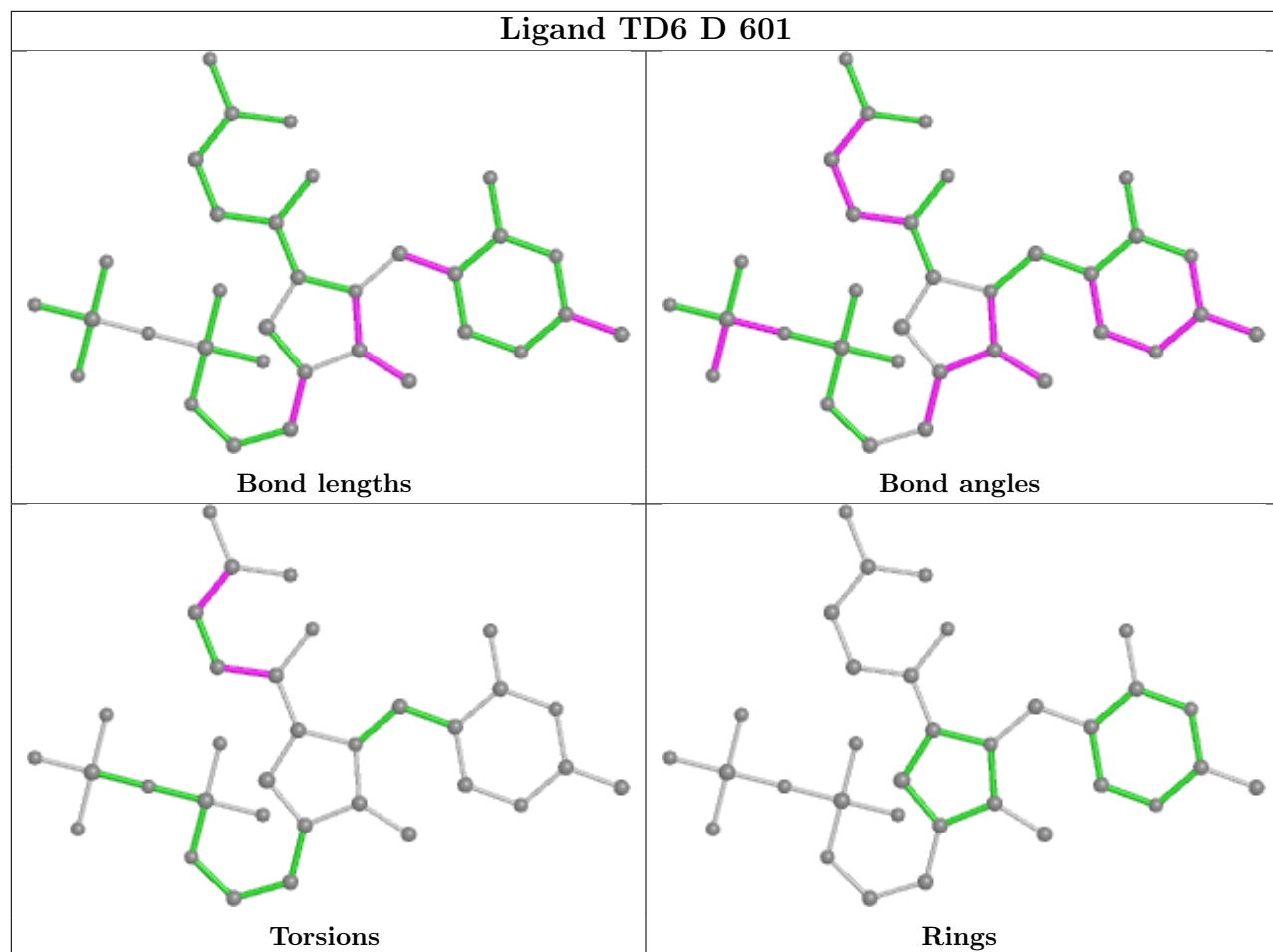
8 monomers are involved in 20 short contacts:

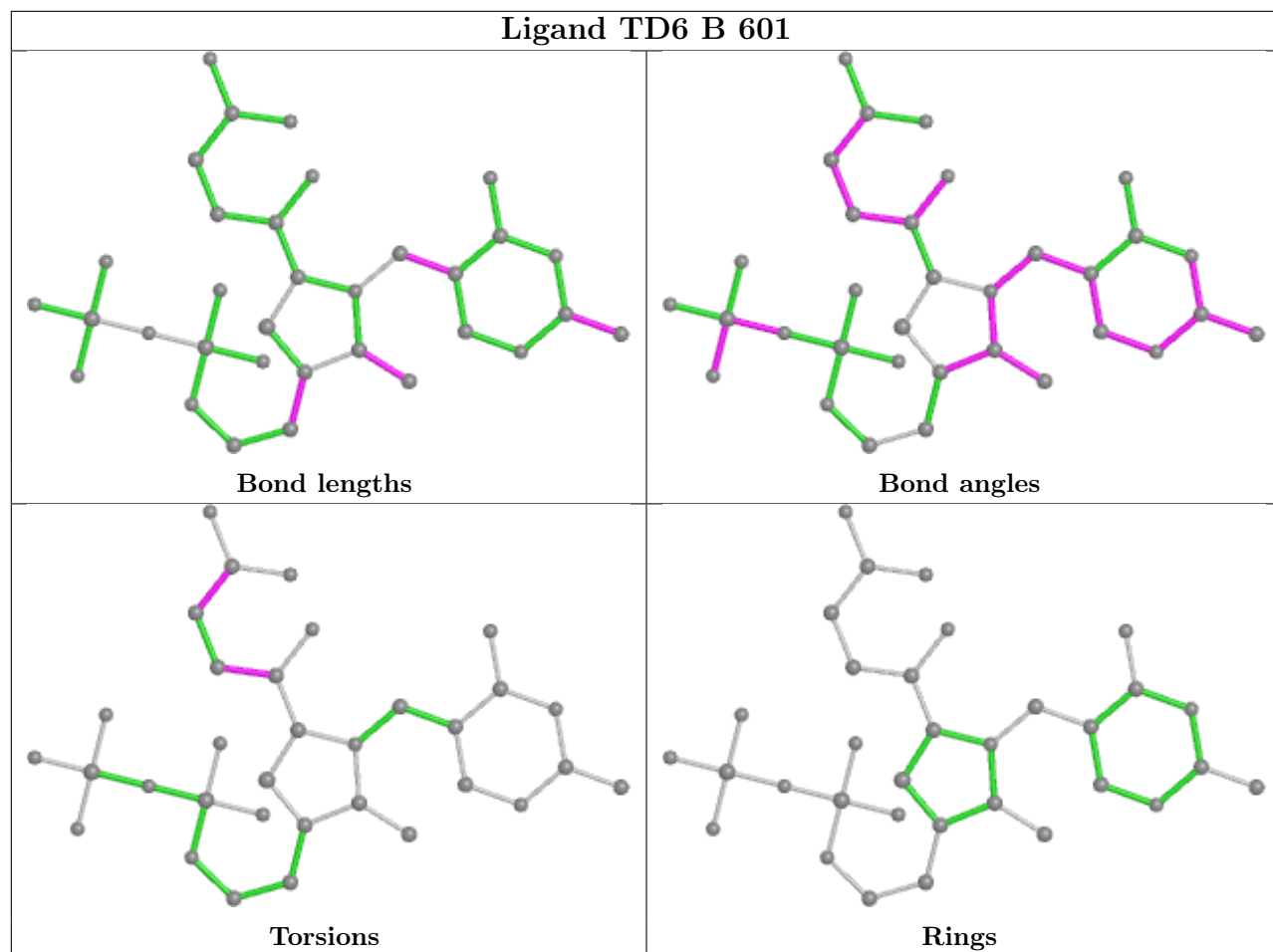
Mol	Chain	Res	Type	Clashes	Symm-Clashes
2	C	601	TD6	2	0
2	D	601	TD6	2	0
2	B	601	TD6	3	0
2	F	601	TD6	3	0
2	G	601	TD6	2	0
2	E	601	TD6	2	0
2	A	601	TD6	3	0
2	H	601	TD6	3	0

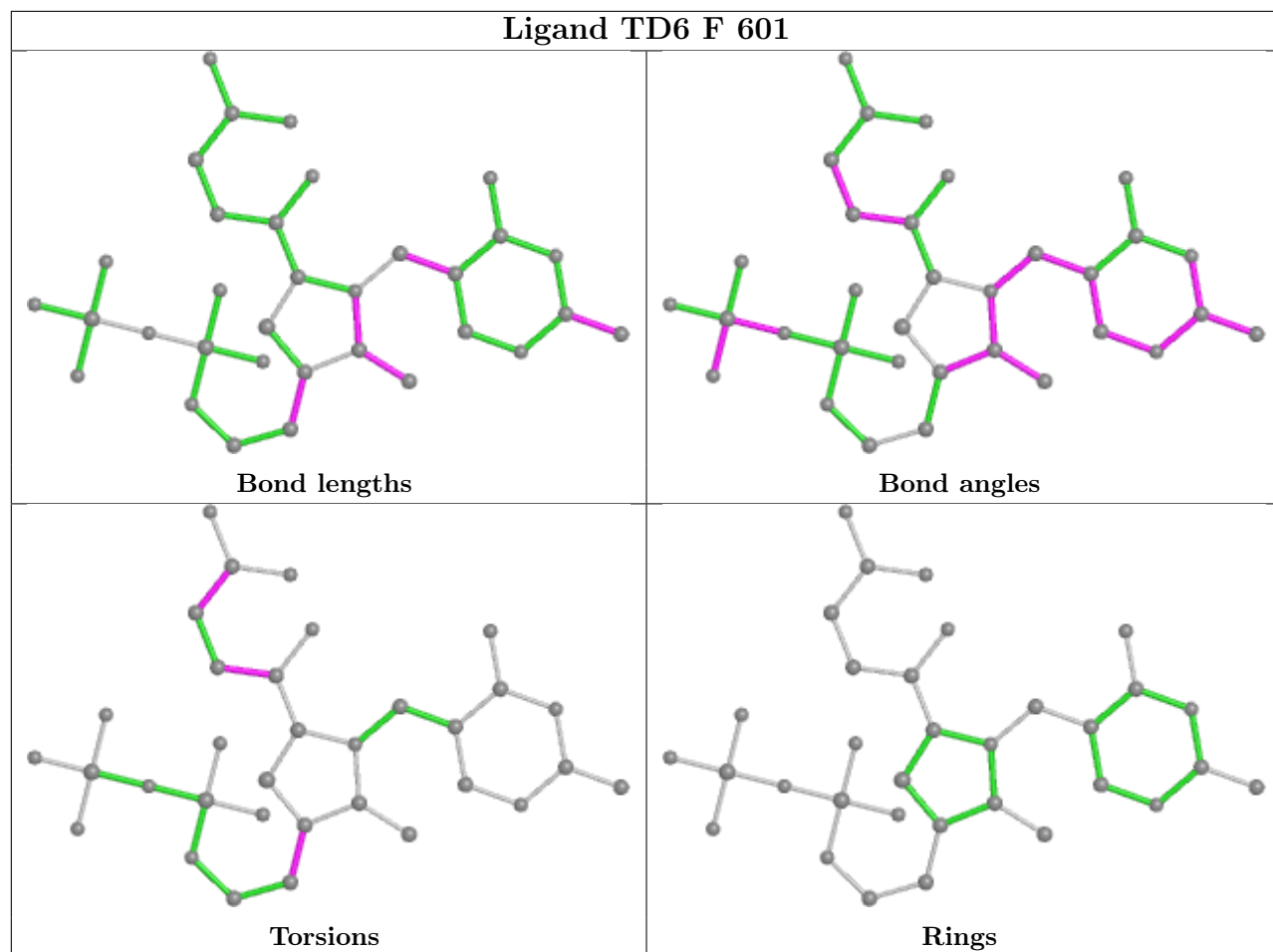
The following is a two-dimensional graphical depiction of Mogul quality analysis of bond lengths, bond angles, torsion angles, and ring geometry for all instances of the Ligand of Interest. In addition, ligands with molecular weight > 250 and outliers as shown on the validation Tables will also be included. For torsion angles, if less than 5% of the Mogul distribution of torsion angles is within 10 degrees of the torsion angle in question, then that torsion angle is considered an outlier. Any bond that is central to one or more torsion angles identified as an outlier by Mogul will be highlighted in the graph. For rings, the root-mean-square deviation (RMSD) between the ring in question and similar rings identified by Mogul is calculated over all ring torsion angles. If the average RMSD is greater than 60 degrees and the minimal RMSD between the ring in question and any Mogul-identified rings is also greater than 60 degrees, then that ring is considered an outlier.

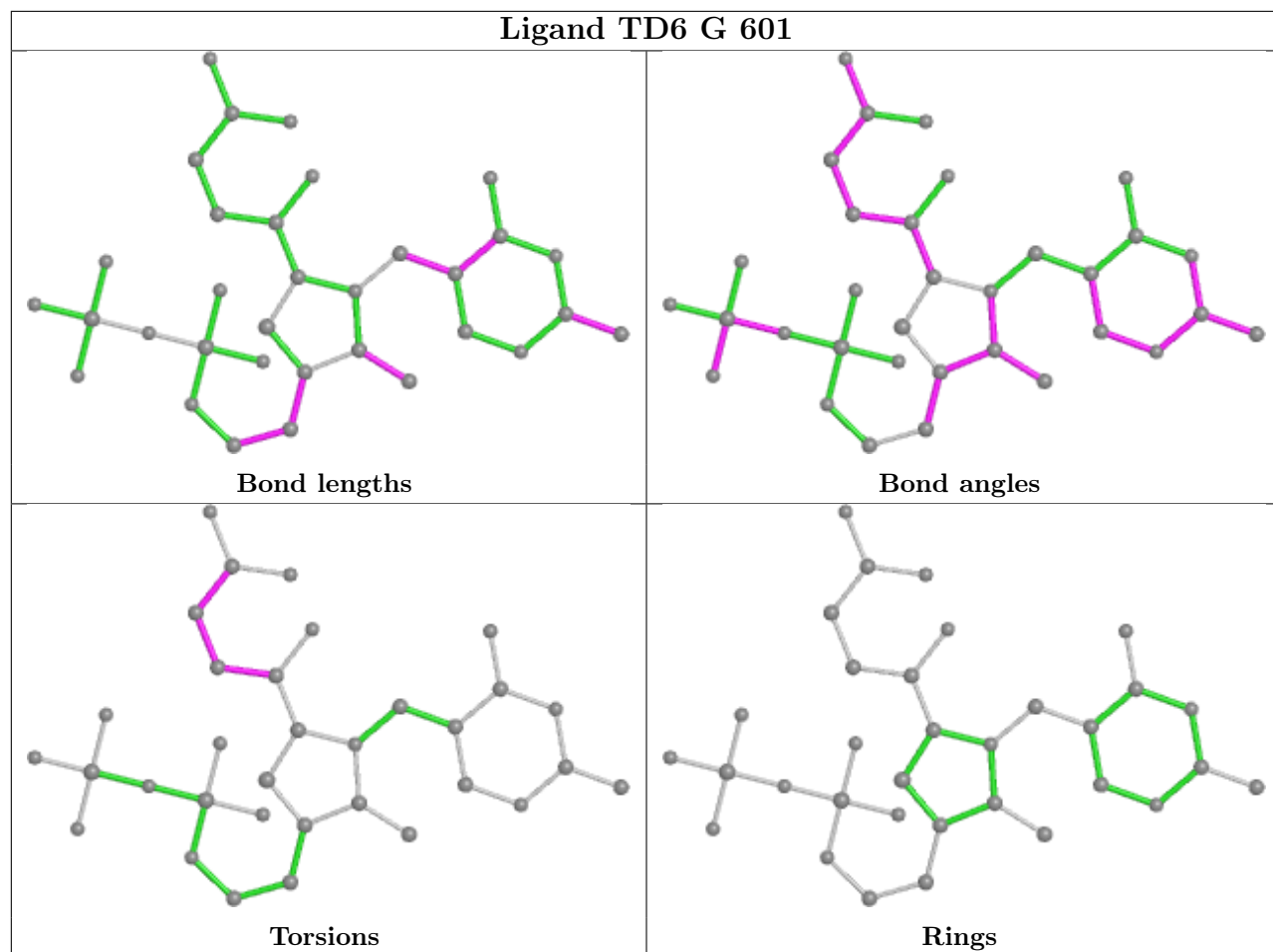
The outliers are highlighted in purple. The color gray indicates Mogul did not find sufficient equivalents in the CSD to analyse the geometry.

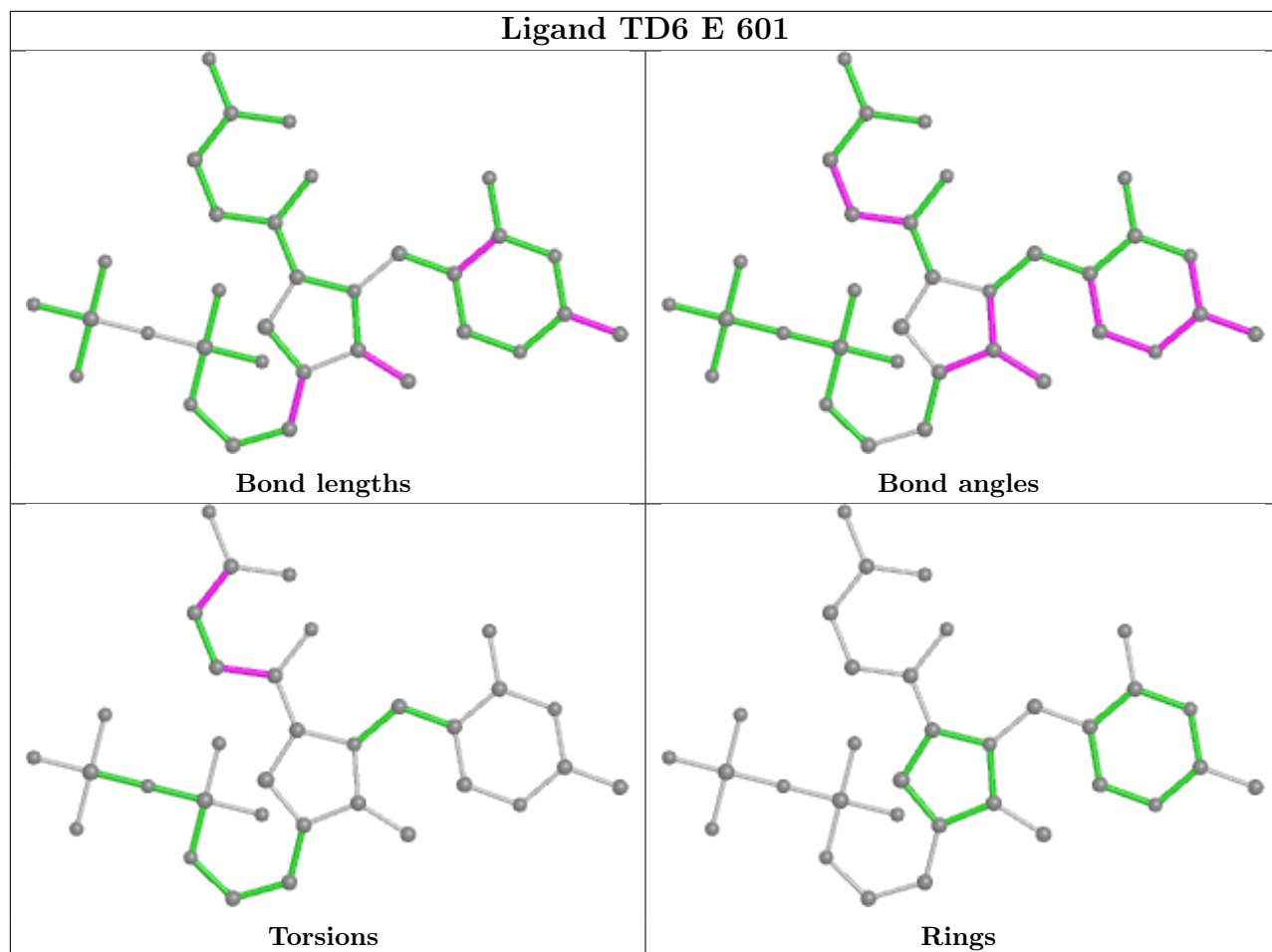


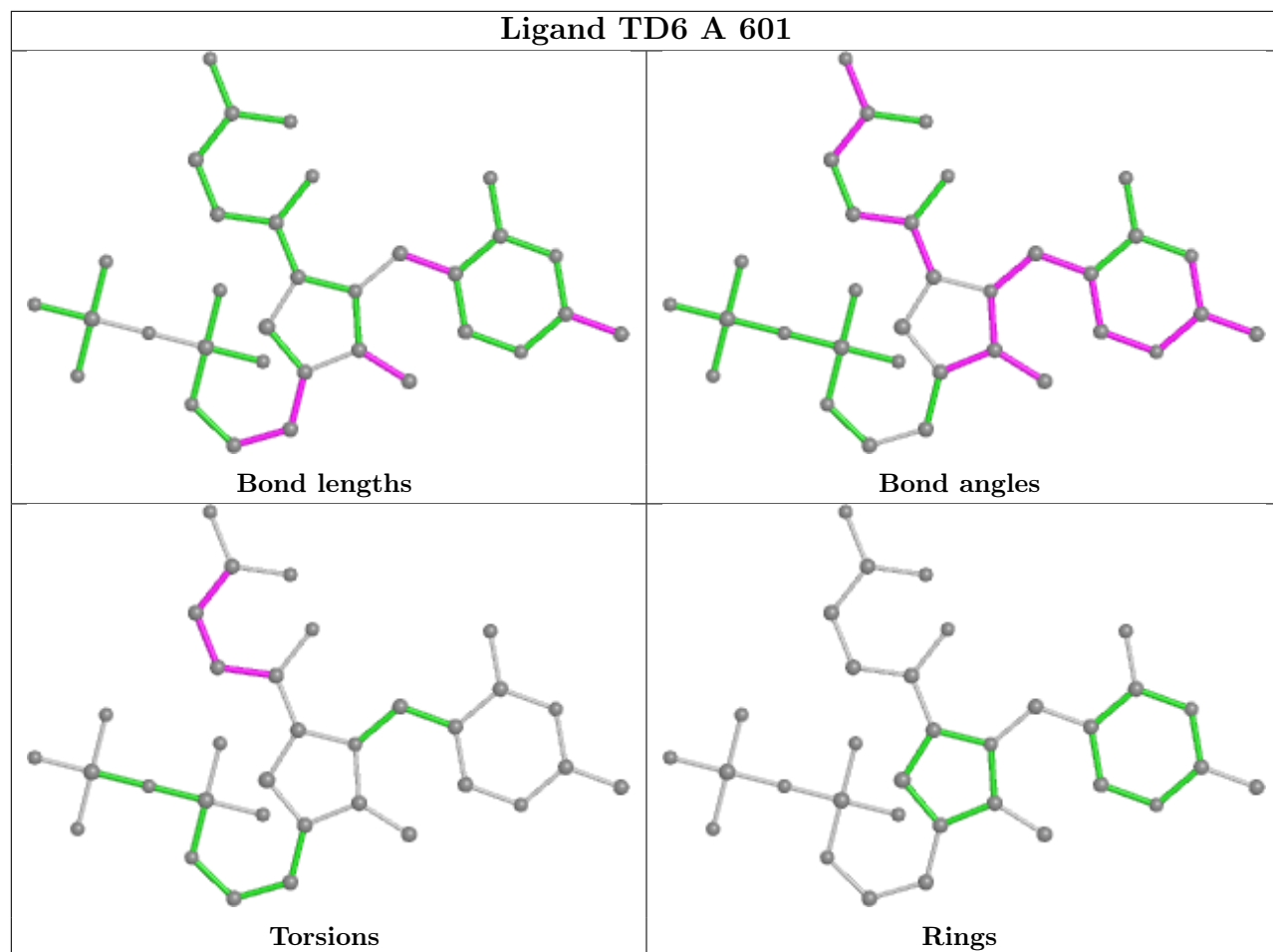


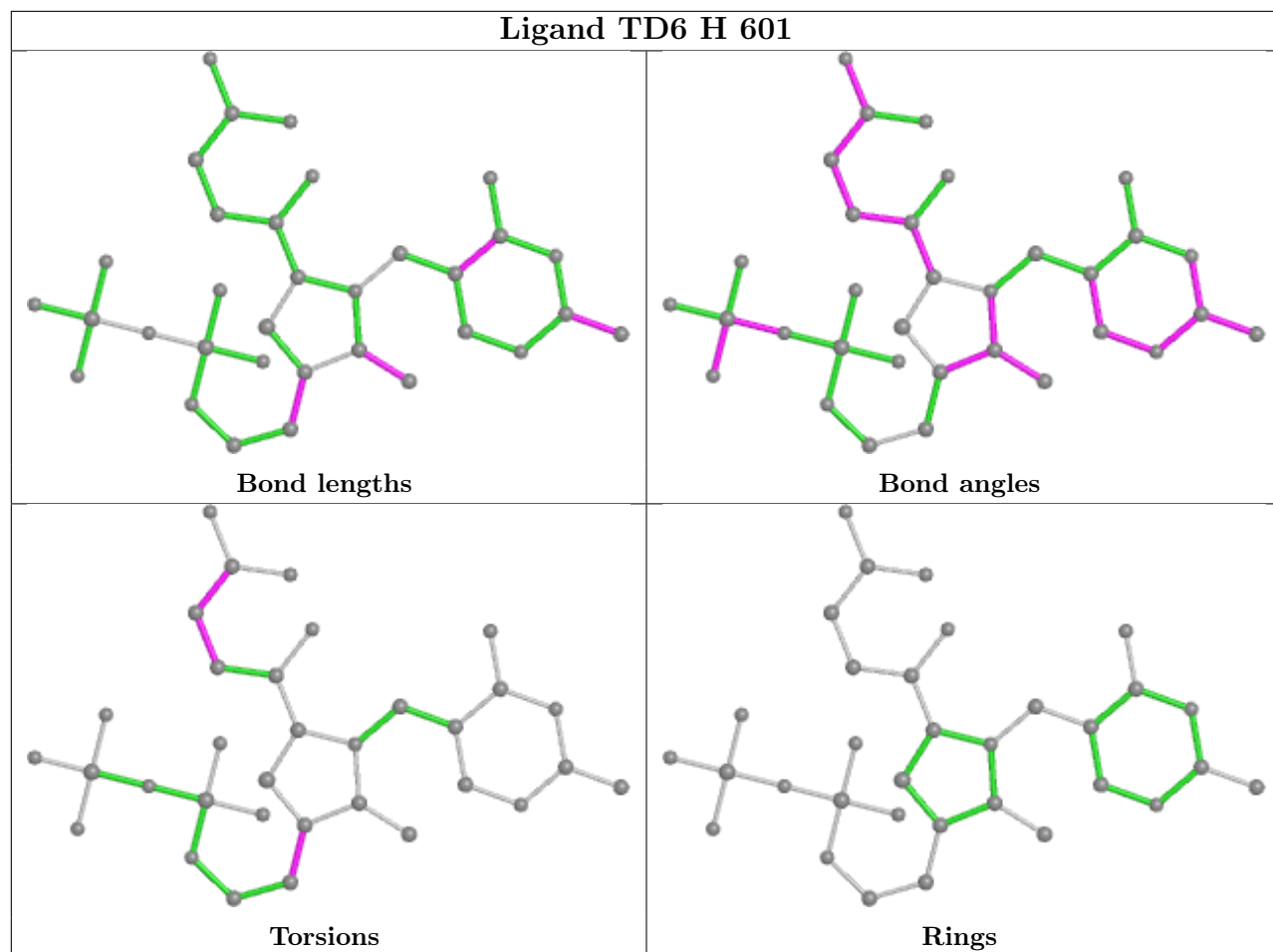












5.7 Other polymers [\(i\)](#)

There are no such residues in this entry.

5.8 Polymer linkage issues [\(i\)](#)

There are no chain breaks in this entry.

6 Fit of model and data

6.1 Protein, DNA and RNA chains

In the following table, the column labelled ‘#RSRZ > 2’ contains the number (and percentage) of RSRZ outliers, followed by percent RSRZ outliers for the chain as percentile scores relative to all X-ray entries and entries of similar resolution. The OWAB column contains the minimum, median, 95th percentile and maximum values of the occupancy-weighted average B-factor per residue. The column labelled ‘Q < 0.9’ lists the number of (and percentage) of residues with an average occupancy less than 0.9.

Mol	Chain	Analysed	<RSRZ>	#RSRZ>2	OWAB(Å ²)	Q<0.9
1	A	556/556 (100%)	-0.26	13 (2%) 60 59	7, 12, 23, 32	0
1	B	556/556 (100%)	-0.33	7 (1%) 77 77	9, 14, 22, 33	0
1	C	556/556 (100%)	-0.23	5 (0%) 84 84	9, 14, 24, 35	0
1	D	556/556 (100%)	-0.07	15 (2%) 54 52	9, 17, 27, 33	0
1	E	556/556 (100%)	-0.24	10 (1%) 68 67	7, 13, 23, 30	0
1	F	556/556 (100%)	-0.29	5 (0%) 84 84	9, 14, 23, 33	0
1	G	556/556 (100%)	-0.24	6 (1%) 80 80	8, 14, 24, 35	0
1	H	556/556 (100%)	-0.24	10 (1%) 68 67	9, 16, 26, 33	0
All	All	4448/4448 (100%)	-0.24	71 (1%) 72 71	7, 14, 24, 35	0

All (71) RSRZ outliers are listed below:

Mol	Chain	Res	Type	RSRZ
1	A	1	MET	5.9
1	C	1	MET	5.2
1	H	1	MET	5.0
1	D	178	MET	4.7
1	G	1	MET	4.7
1	E	556	LEU	4.4
1	D	1	MET	4.4
1	B	1	MET	4.3
1	E	1	MET	4.3
1	G	177	GLU	4.2
1	A	177	GLU	4.2
1	D	555	HIS	4.2
1	E	178	MET	3.9
1	H	555	HIS	3.8
1	F	1	MET	3.8
1	B	176	GLY	3.7

Continued on next page...

Continued from previous page...

Mol	Chain	Res	Type	RSRZ
1	G	178	MET	3.7
1	D	556	LEU	3.6
1	D	347	VAL	3.6
1	C	178	MET	3.5
1	B	180	ASP	3.4
1	B	114	CYS	3.4
1	A	556	LEU	3.4
1	H	178	MET	3.3
1	D	177	GLU	3.3
1	F	176	GLY	3.2
1	A	178	MET	3.2
1	E	176	GLY	3.1
1	A	347	VAL	3.1
1	H	347	VAL	3.1
1	E	177	GLU	3.1
1	A	482	GLN	3.0
1	C	177	GLU	3.0
1	D	483	SER	2.9
1	B	178	MET	2.9
1	A	270	ALA	2.9
1	D	215	PHE	2.9
1	C	176	GLY	2.9
1	D	176	GLY	2.9
1	D	239	LEU	2.8
1	G	176	GLY	2.8
1	E	168	CYS	2.8
1	F	178	MET	2.7
1	F	180	ASP	2.7
1	F	114	CYS	2.6
1	D	550	LEU	2.6
1	H	180	ASP	2.6
1	A	168	CYS	2.6
1	D	114	CYS	2.6
1	B	177	GLU	2.5
1	D	343	GLN	2.5
1	H	177	GLU	2.5
1	A	555	HIS	2.4
1	H	556	LEU	2.4
1	H	176	GLY	2.3
1	A	27	CYS	2.3
1	E	114	CYS	2.3
1	A	176	GLY	2.3

Continued on next page...

Continued from previous page...

Mol	Chain	Res	Type	RSRZ
1	E	347	VAL	2.2
1	E	270	ALA	2.2
1	A	180	ASP	2.2
1	B	482	GLN	2.1
1	H	215	PHE	2.1
1	G	523	ASP	2.1
1	H	183	LEU	2.1
1	D	479	PRO	2.1
1	E	27	CYS	2.1
1	C	555	HIS	2.1
1	A	114	CYS	2.1
1	D	242	GLN	2.0
1	G	556	LEU	2.0

6.2 Non-standard residues in protein, DNA, RNA chains [i](#)

There are no non-standard protein/DNA/RNA residues in this entry.

6.3 Carbohydrates [i](#)

There are no monosaccharides in this entry.

6.4 Ligands [i](#)

In the following table, the Atoms column lists the number of modelled atoms in the group and the number defined in the chemical component dictionary. The B-factors column lists the minimum, median, 95th percentile and maximum values of B factors of atoms in the group. The column labelled 'Q< 0.9' lists the number of atoms with occupancy less than 0.9.

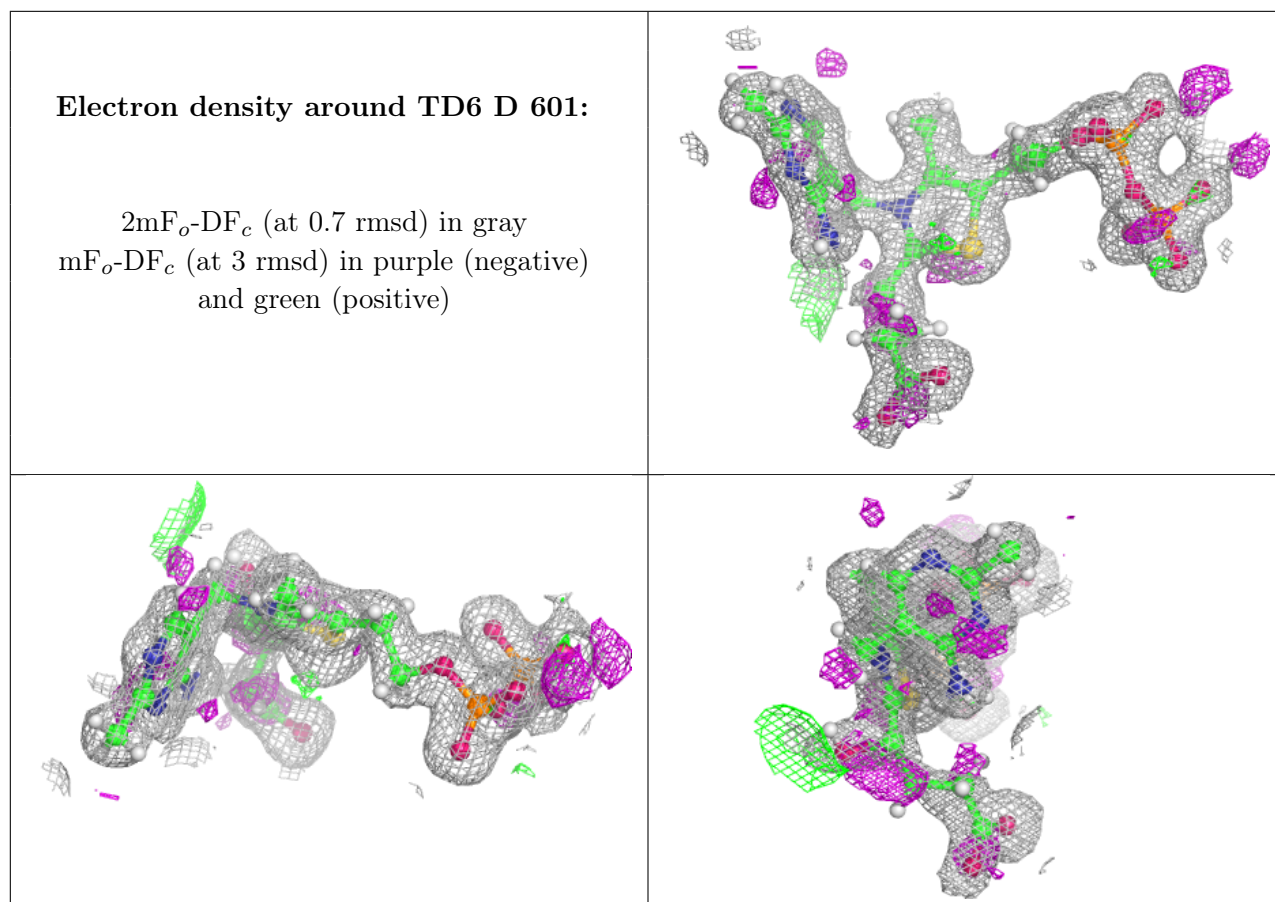
Mol	Type	Chain	Res	Atoms	RSCC	RSR	B-factors(Å ²)	Q<0.9
4	GOL	A	603	6/6	0.90	0.13	14,21,26,26	0
4	GOL	D	603	6/6	0.93	0.10	18,26,32,32	0
4	GOL	B	603	6/6	0.94	0.09	17,21,31,31	0
2	TD6	D	601	33/33	0.94	0.12	21,24,33,40	0
4	GOL	E	603	6/6	0.94	0.14	12,22,27,27	0
4	GOL	F	603	6/6	0.94	0.10	14,22,32,32	0
4	GOL	G	603	6/6	0.94	0.10	17,26,31,32	0
2	TD6	E	601	33/33	0.95	0.10	17,19,33,39	0
4	GOL	C	603	6/6	0.95	0.12	14,27,32,32	0
2	TD6	C	601	33/33	0.95	0.12	19,21,32,36	0

Continued on next page...

Continued from previous page...

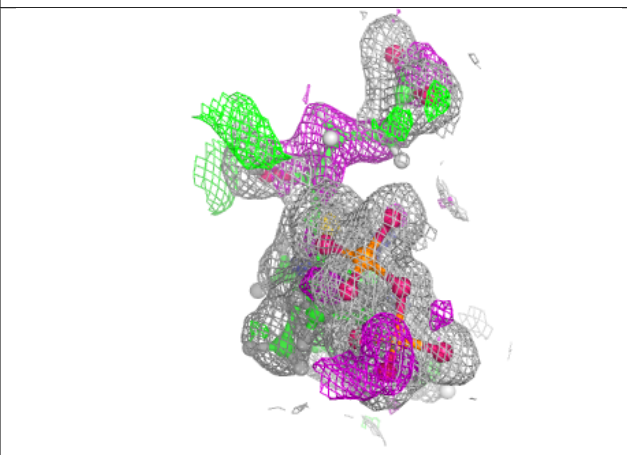
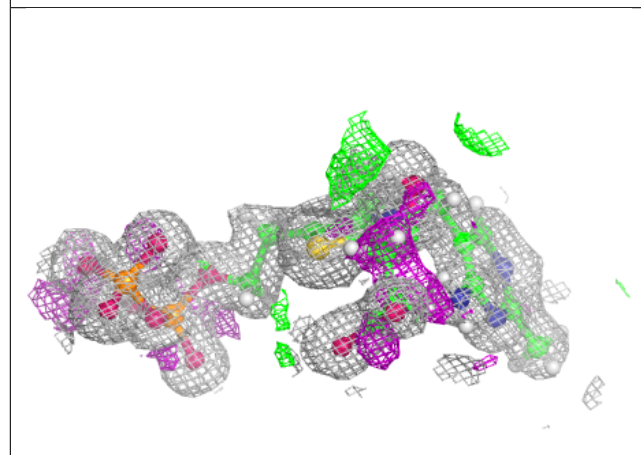
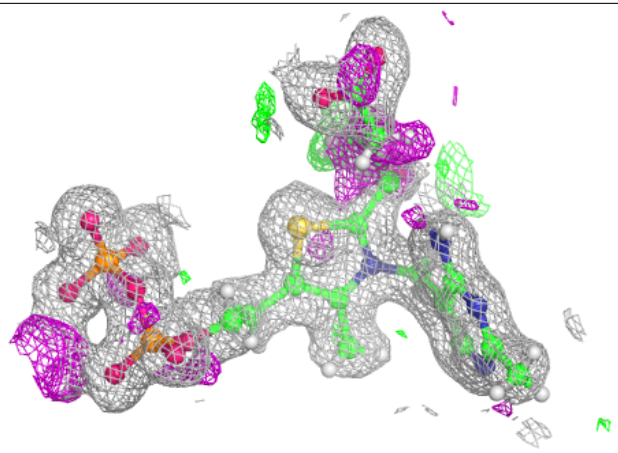
Mol	Type	Chain	Res	Atoms	RSCC	RSR	B-factors(\AA^2)	Q<0.9
4	GOL	H	603	6/6	0.95	0.12	16,25,30,30	0
2	TD6	G	601	33/33	0.96	0.11	19,23,32,39	0
2	TD6	H	601	33/33	0.96	0.11	20,22,34,46	0
2	TD6	B	601	33/33	0.96	0.11	17,20,34,41	0
2	TD6	A	601	33/33	0.96	0.11	16,18,31,44	0
2	TD6	F	601	33/33	0.96	0.10	18,21,33,41	0
3	MN	E	602	1/1	0.99	0.05	20,20,20,20	0
3	MN	A	602	1/1	0.99	0.05	20,20,20,20	0
3	MN	D	602	1/1	0.99	0.05	27,27,27,27	0
3	MN	G	602	1/1	1.00	0.05	23,23,23,23	0
3	MN	H	602	1/1	1.00	0.06	24,24,24,24	0
3	MN	B	602	1/1	1.00	0.05	20,20,20,20	0
3	MN	C	602	1/1	1.00	0.06	24,24,24,24	0
3	MN	F	602	1/1	1.00	0.05	21,21,21,21	0

The following is a graphical depiction of the model fit to experimental electron density of all instances of the Ligand of Interest. In addition, ligands with molecular weight > 250 and outliers as shown on the geometry validation Tables will also be included. Each fit is shown from different orientation to approximate a three-dimensional view.



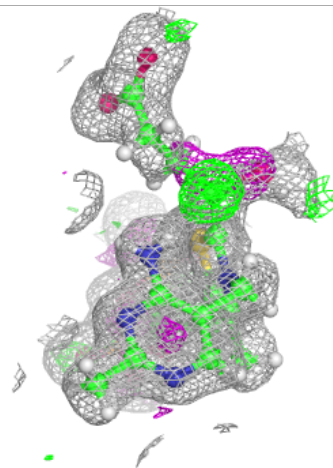
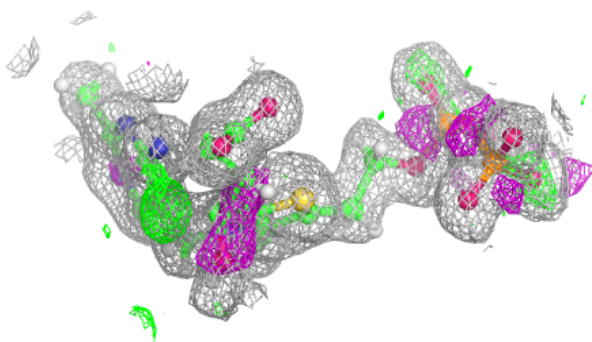
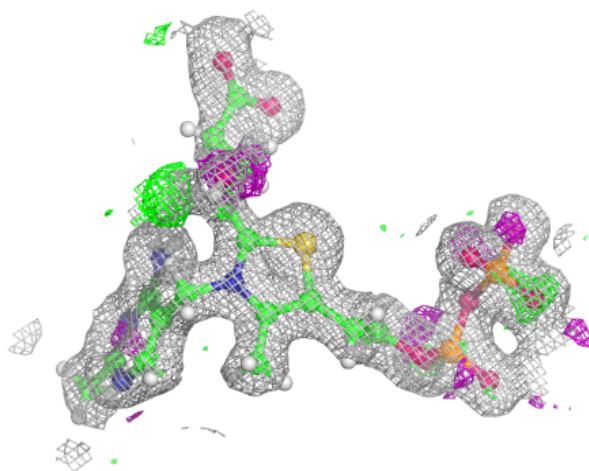
Electron density around TD6 E 601:

$2mF_o-DF_c$ (at 0.7 rmsd) in gray
 mF_o-DF_c (at 3 rmsd) in purple (negative)
and green (positive)



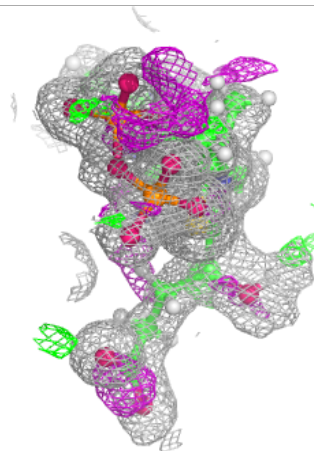
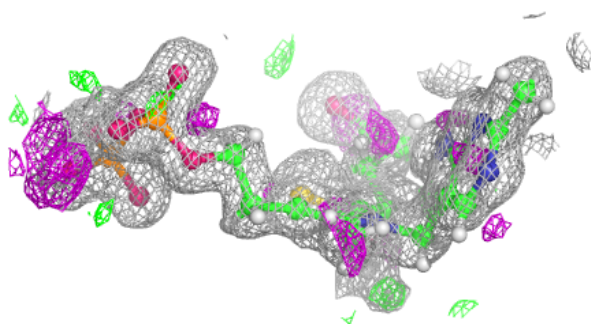
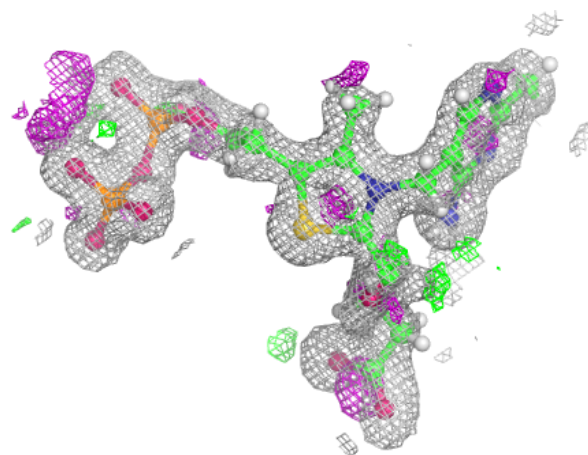
Electron density around TD6 C 601:

$2mF_o-DF_c$ (at 0.7 rmsd) in gray
 mF_o-DF_c (at 3 rmsd) in purple (negative)
and green (positive)



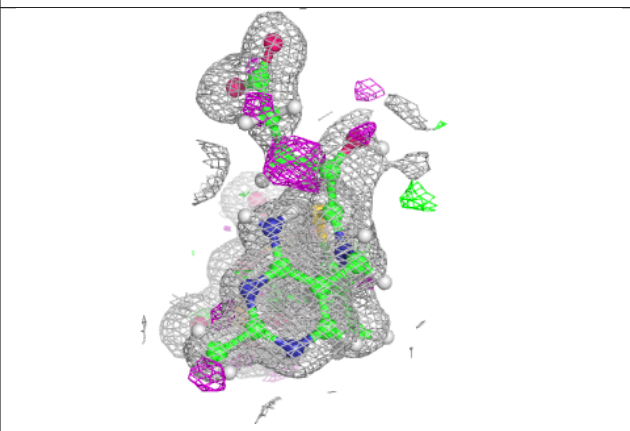
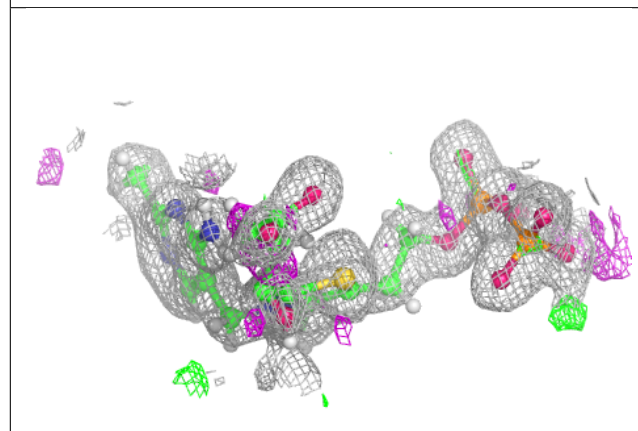
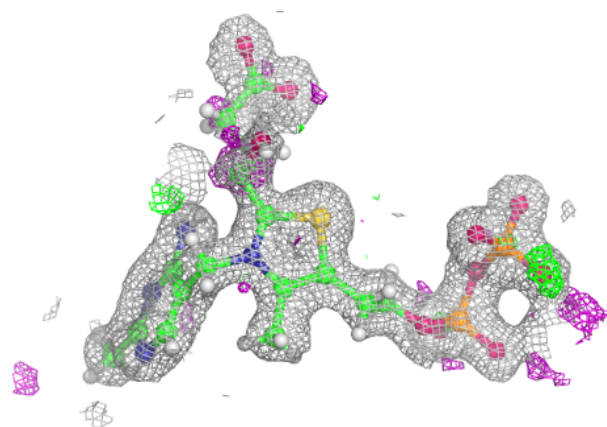
Electron density around TD6 G 601:

$2mF_o-DF_c$ (at 0.7 rmsd) in gray
 mF_o-DF_c (at 3 rmsd) in purple (negative)
and green (positive)



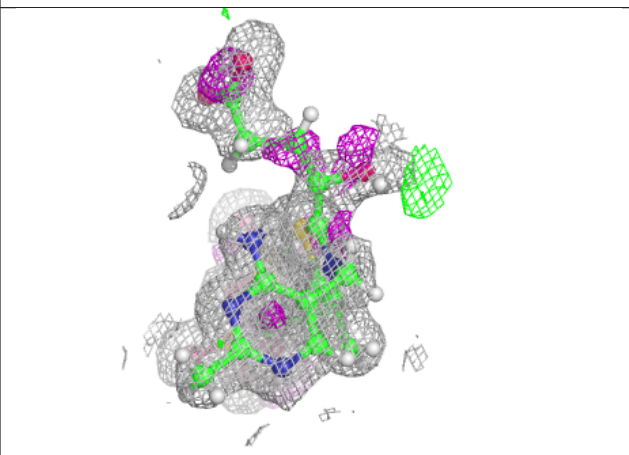
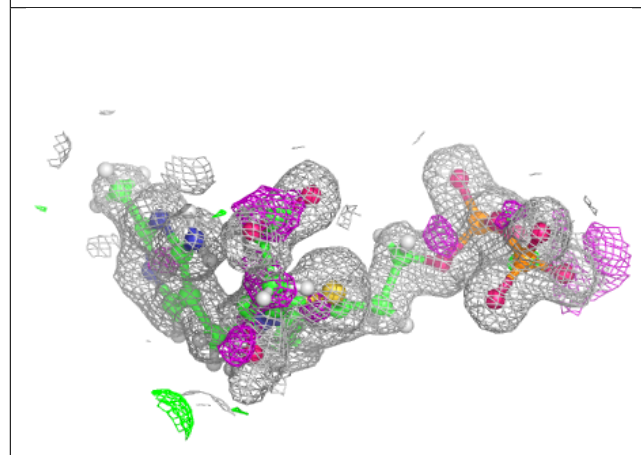
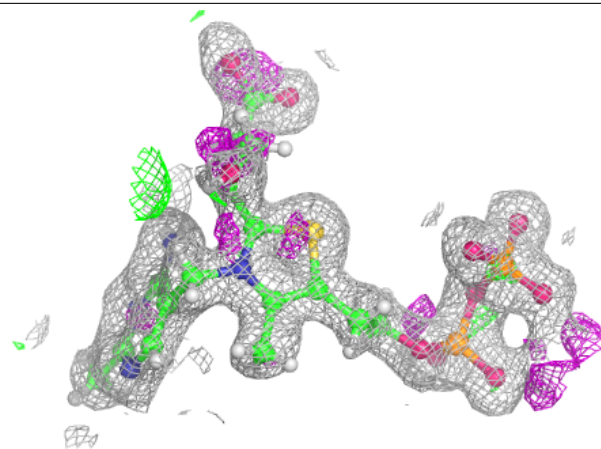
Electron density around TD6 H 601:

$2mF_o-DF_c$ (at 0.7 rmsd) in gray
 mF_o-DF_c (at 3 rmsd) in purple (negative)
and green (positive)



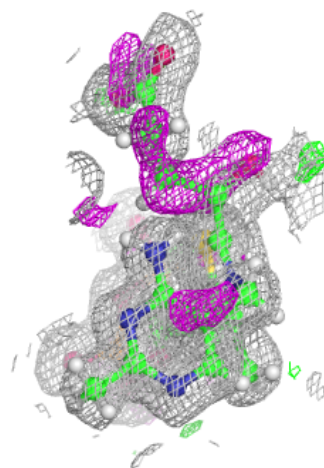
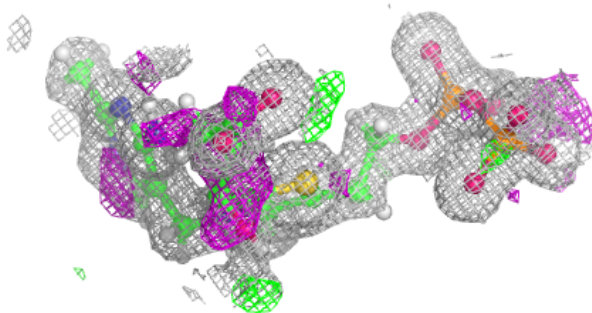
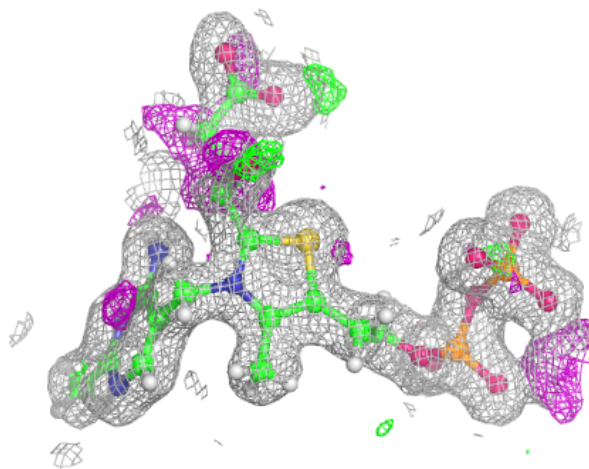
Electron density around TD6 B 601:

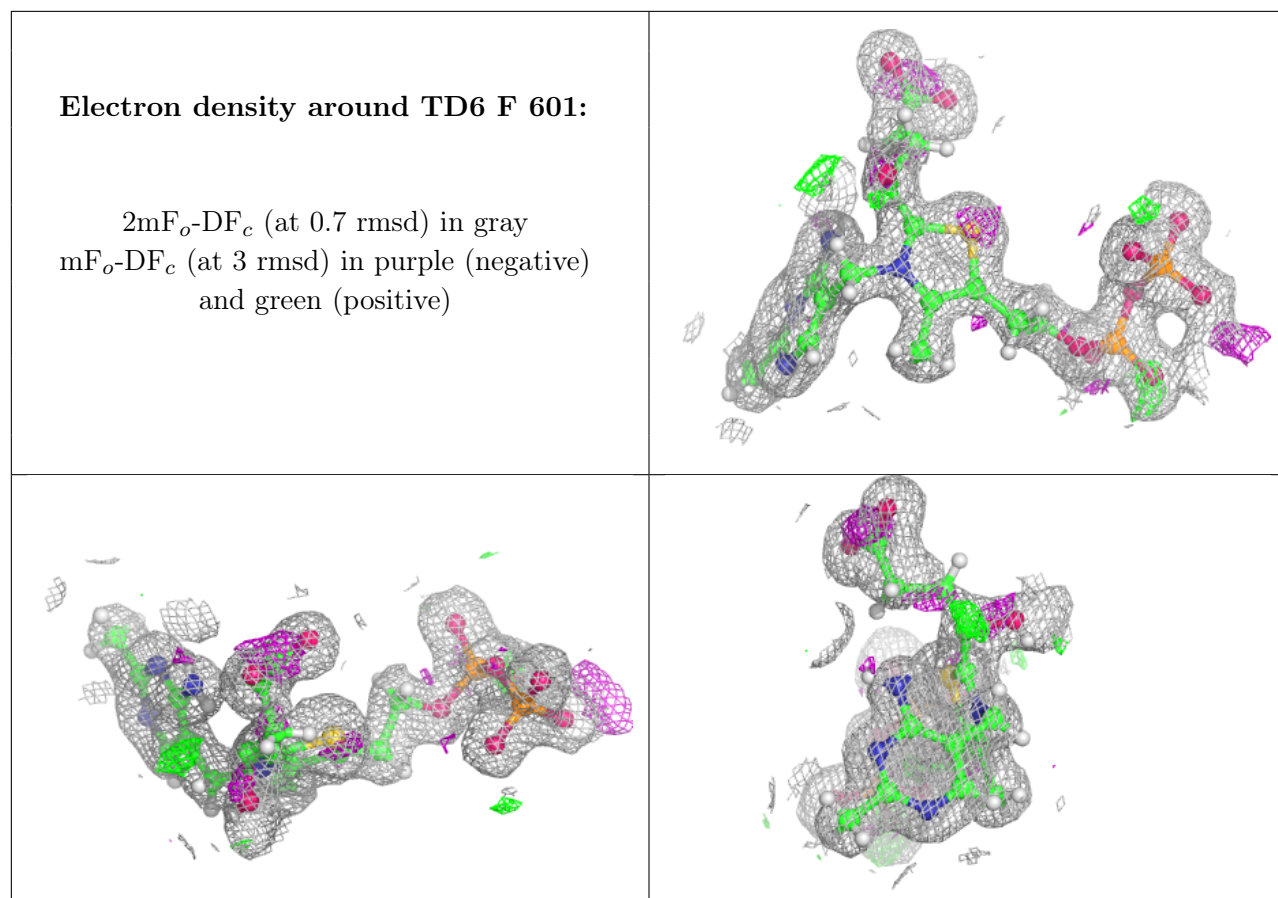
$2mF_o-DF_c$ (at 0.7 rmsd) in gray
 mF_o-DF_c (at 3 rmsd) in purple (negative)
and green (positive)



Electron density around TD6 A 601:

$2mF_o-DF_c$ (at 0.7 rmsd) in gray
 mF_o-DF_c (at 3 rmsd) in purple (negative)
and green (positive)





6.5 Other polymers [i](#)

There are no such residues in this entry.