



Full wwPDB X-ray Structure Validation Report ⓘ

Oct 19, 2024 – 12:05 PM EDT

PDB ID : 5D6C
Title : Structure of 4497 Fab bound to synthetic wall teichoic acid fragment
Authors : Lupardus, P.J.; Fong, R.
Deposited on : 2015-08-12
Resolution : 1.72 Å(reported)

This is a Full wwPDB X-ray Structure Validation Report for a publicly released PDB entry.

We welcome your comments at validation@mail.wwpdb.org

A user guide is available at

<https://www.wwpdb.org/validation/2017/XrayValidationReportHelp>

with specific help available everywhere you see the ⓘ symbol.

The types of validation reports are described at

<http://www.wwpdb.org/validation/2017/FAQs#types>.

The following versions of software and data (see [references ⓘ](#)) were used in the production of this report:

MolProbity : 4.02b-467
Mogul : 2022.3.0, CSD as543be (2022)
Xtriage (Phenix) : 1.20.1
EDS : 3.0
buster-report : 1.1.7 (2018)
Percentile statistics : 20231227.v01 (using entries in the PDB archive December 27th 2023)
CCP4 : 9.0.003 (Gargrove)
Density-Fitness : 1.0.11
Ideal geometry (proteins) : Engh & Huber (2001)
Ideal geometry (DNA, RNA) : Parkinson et al. (1996)
Validation Pipeline (wwPDB-VP) : 2.39

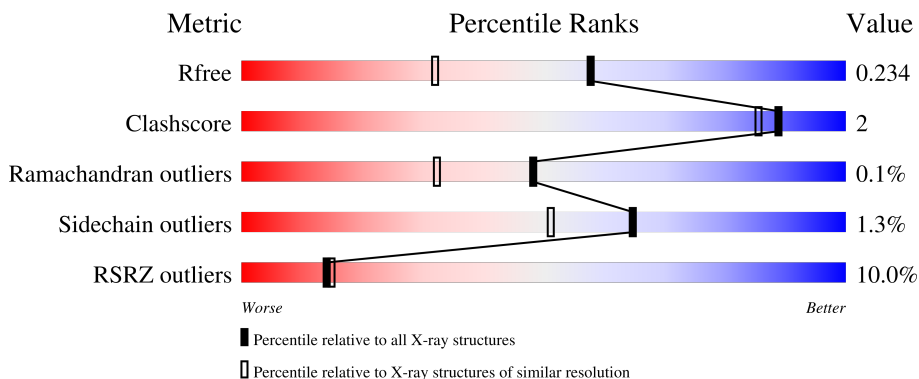
1 Overall quality at a glance

The following experimental techniques were used to determine the structure:

X-RAY DIFFRACTION

The reported resolution of this entry is 1.72 Å.

Percentile scores (ranging between 0-100) for global validation metrics of the entry are shown in the following graphic. The table shows the number of entries on which the scores are based.



Metric	Whole archive (#Entries)	Similar resolution (#Entries, resolution range(Å))
R_{free}	164625	7106 (1.74-1.70)
Clashscore	180529	7746 (1.74-1.70)
Ramachandran outliers	177936	7654 (1.74-1.70)
Sidechain outliers	177891	7654 (1.74-1.70)
RSRZ outliers	164620	7104 (1.74-1.70)

The table below summarises the geometric issues observed across the polymeric chains and their fit to the electron density. The red, orange, yellow and green segments of the lower bar indicate the fraction of residues that contain outliers for ≥ 3 , 2, 1 and 0 types of geometric quality criteria respectively. A grey segment represents the fraction of residues that are not modelled. The numeric value for each fraction is indicated below the corresponding segment, with a dot representing fractions $\leq 5\%$. The upper red bar (where present) indicates the fraction of residues that have poor fit to the electron density. The numeric value is given above the bar.

Mol	Chain	Length	Quality of chain
1	A	220	 13% 94% 5%
1	L	220	 8% 93% 6%
2	B	224	 13% 92% 6% 6%
2	H	224	 4% 92% 6% 6%

2 Entry composition [i](#)

There are 7 unique types of molecules in this entry. The entry contains 7481 atoms, of which 0 are hydrogens and 0 are deuteriums.

In the tables below, the ZeroOcc column contains the number of atoms modelled with zero occupancy, the AltConf column contains the number of residues with at least one atom in alternate conformation and the Trace column contains the number of residues modelled with at most 2 atoms.

- Molecule 1 is a protein called 4497 antibody IgK (VL and CL).

Mol	Chain	Residues	Atoms					ZeroOcc	AltConf	Trace
			Total	C	N	O	S			
1	A	219	Total	C	N	O	S	0	3	0
			1736	1090	302	340	4			
1	L	219	Total	C	N	O	S	0	5	0
			1742	1095	299	344	4			

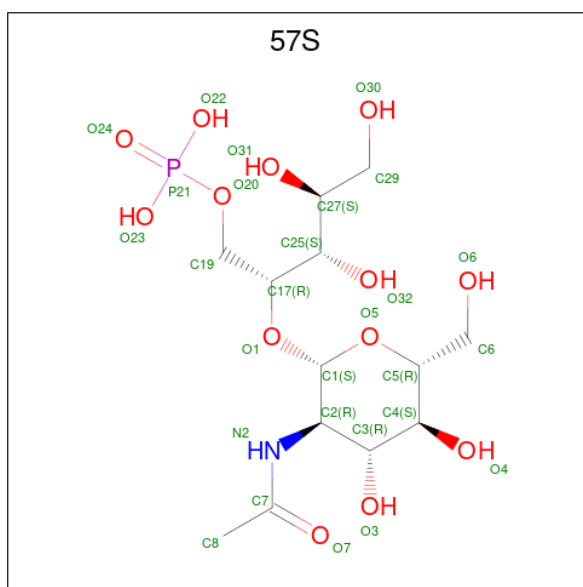
- Molecule 2 is a protein called 4497 antibody IgG1 (VH and CH1).

Mol	Chain	Residues	Atoms					ZeroOcc	AltConf	Trace
			Total	C	N	O	S			
2	B	210	Total	C	N	O	S	0	2	0
			1575	995	266	308	6			
2	H	219	Total	C	N	O	S	0	5	0
			1652	1040	279	326	7			

- Molecule 3 is CALCIUM ION (three-letter code: CA) (formula: Ca).

Mol	Chain	Residues	Atoms		ZeroOcc	AltConf
3	A	2	Total	Ca	0	0
			2	2		
3	H	1	Total	Ca	0	0
			1	1		
3	L	1	Total	Ca	0	0
			1	1		

- Molecule 4 is 4-O-[2-acetamido-2-deoxy-beta-D-glucopyranosyl]-5-O-phosphono-D-ribitol (three-letter code: 57S) (formula: C₁₃H₂₆NO₁₃P).



Mol	Chain	Residues	Atoms				ZeroOcc	AltConf	
			Total	C	N	O			P
4	B	1	28	13	1	13	1	0	0
4	L	1	28	13	1	13	1	0	0

- Molecule 5 is ACETATE ION (three-letter code: ACT) (formula: $C_2H_3O_2$).



Mol	Chain	Residues	Atoms		ZeroOcc	AltConf
			Total	C O		
5	H	1	4	2 2	0	0
5	L	1	4	2 2	0	0

- Molecule 6 is GLYCEROL (three-letter code: GOL) (formula: $C_3H_8O_3$).



Mol	Chain	Residues	Atoms		ZeroOcc	AltConf
6	H	1	Total	C O	0	0
			6	3 3		

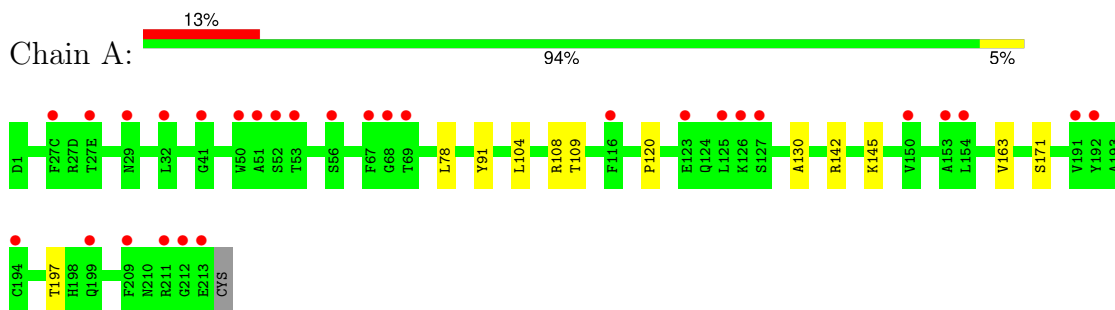
- Molecule 7 is water.

Mol	Chain	Residues	Atoms		ZeroOcc	AltConf
7	A	138	Total	O	0	0
			138	138		
7	B	171	Total	O	0	0
			171	171		
7	H	196	Total	O	0	0
			196	196		
7	L	197	Total	O	0	0
			197	197		

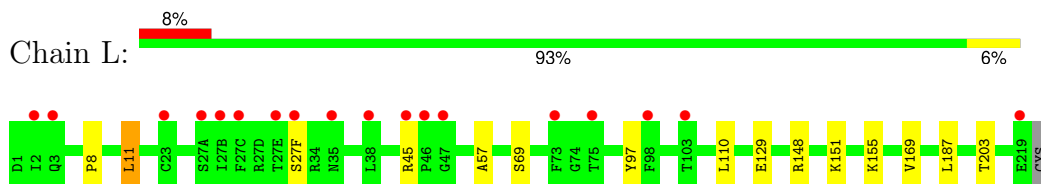
3 Residue-property plots [i](#)

These plots are drawn for all protein, RNA, DNA and oligosaccharide chains in the entry. The first graphic for a chain summarises the proportions of the various outlier classes displayed in the second graphic. The second graphic shows the sequence view annotated by issues in geometry and electron density. Residues are color-coded according to the number of geometric quality criteria for which they contain at least one outlier: green = 0, yellow = 1, orange = 2 and red = 3 or more. A red dot above a residue indicates a poor fit to the electron density ($RSRZ > 2$). Stretches of 2 or more consecutive residues without any outlier are shown as a green connector. Residues present in the sample, but not in the model, are shown in grey.

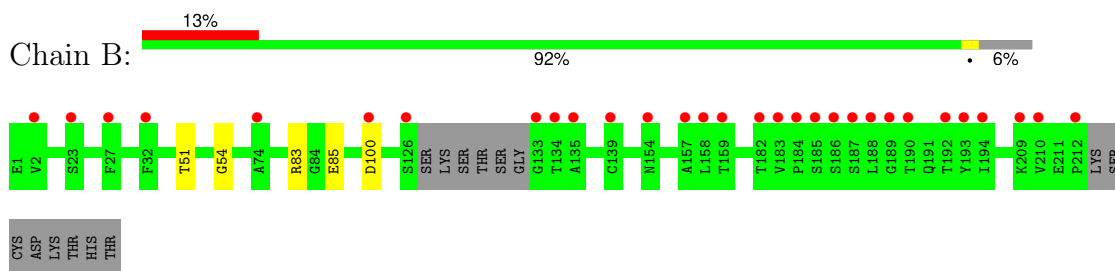
- Molecule 1: 4497 antibody IgK (VL and CL)



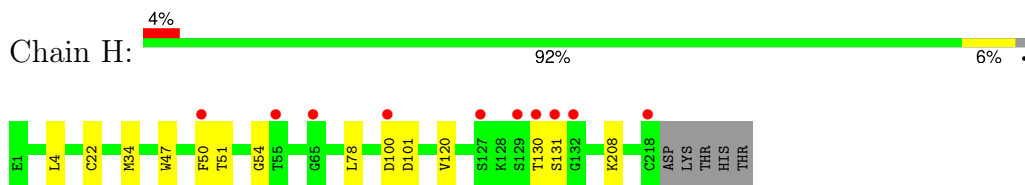
- Molecule 1: 4497 antibody IgK (VL and CL)



- Molecule 2: 4497 antibody IgG1 (VH and CH1)



- Molecule 2: 4497 antibody IgG1 (VH and CH1)



4 Data and refinement statistics

Property	Value	Source
Space group	P 21 21 21	Depositor
Cell constants a, b, c, α , β , γ	63.71Å 111.47Å 158.41Å 90.00° 90.00° 90.00°	Depositor
Resolution (Å)	33.64 – 1.72 33.64 – 1.72	Depositor EDS
% Data completeness (in resolution range)	99.9 (33.64-1.72) 99.8 (33.64-1.72)	Depositor EDS
R_{merge}	0.06	Depositor
R_{sym}	(Not available)	Depositor
$\langle I/\sigma(I) \rangle$ ¹	1.97 (at 1.72Å)	Xtrriage
Refinement program	BUSTER 2.11.4	Depositor
R, R_{free}	0.203 , 0.238 0.203 , 0.234	Depositor DCC
R_{free} test set	6101 reflections (5.08%)	wwPDB-VP
Wilson B-factor (Å ²)	27.5	Xtrriage
Anisotropy	0.417	Xtrriage
Bulk solvent k_{sol} (e/Å ³), B_{sol} (Å ²)	0.35 , 38.0	EDS
L-test for twinning ²	$\langle L \rangle = 0.50$, $\langle L^2 \rangle = 0.33$	Xtrriage
Estimated twinning fraction	No twinning to report.	Xtrriage
F_o, F_c correlation	0.96	EDS
Total number of atoms	7481	wwPDB-VP
Average B, all atoms (Å ²)	36.0	wwPDB-VP

Xtrriage's analysis on translational NCS is as follows: *The largest off-origin peak in the Patterson function is 3.42% of the height of the origin peak. No significant pseudotranslation is detected.*

¹Intensities estimated from amplitudes.

²Theoretical values of $\langle |L| \rangle$, $\langle L^2 \rangle$ for acentric reflections are 0.5, 0.333 respectively for untwinned datasets, and 0.375, 0.2 for perfectly twinned datasets.

5 Model quality [i](#)

5.1 Standard geometry [i](#)

Bond lengths and bond angles in the following residue types are not validated in this section: ACT, CA, 57S, GOL

The Z score for a bond length (or angle) is the number of standard deviations the observed value is removed from the expected value. A bond length (or angle) with $|Z| > 5$ is considered an outlier worth inspection. RMSZ is the root-mean-square of all Z scores of the bond lengths (or angles).

Mol	Chain	Bond lengths		Bond angles	
		RMSZ	# $ Z > 5$	RMSZ	# $ Z > 5$
1	A	0.46	0/1784	0.66	0/2420
1	L	0.52	0/1796	0.68	0/2438
2	B	0.51	0/1618	0.69	0/2205
2	H	0.61	1/1705 (0.1%)	0.69	0/2321
All	All	0.53	1/6903 (0.0%)	0.68	0/9384

All (1) bond length outliers are listed below:

Mol	Chain	Res	Type	Atoms	Z	Observed(Å)	Ideal(Å)
2	H	130	THR	C-N	-5.39	1.21	1.34

There are no bond angle outliers.

There are no chirality outliers.

There are no planarity outliers.

5.2 Too-close contacts [i](#)

In the following table, the Non-H and H(model) columns list the number of non-hydrogen atoms and hydrogen atoms in the chain respectively. The H(added) column lists the number of hydrogen atoms added and optimized by MolProbity. The Clashes column lists the number of clashes within the asymmetric unit, whereas Symm-Clashes lists symmetry-related clashes.

Mol	Chain	Non-H	H(model)	H(added)	Clashes	Symm-Clashes
1	A	1736	0	1703	8	0
1	L	1742	0	1713	6	0
2	B	1575	0	1531	2	0
2	H	1652	0	1621	8	0
3	A	2	0	0	0	0
3	H	1	0	0	0	0

Continued on next page...

Continued from previous page...

Mol	Chain	Non-H	H(model)	H(added)	Clashes	Symm-Clashes
3	L	1	0	0	0	0
4	B	28	0	10	0	0
4	L	28	0	10	0	0
5	H	4	0	3	0	0
5	L	4	0	3	0	0
6	H	6	0	8	1	0
7	A	138	0	0	0	0
7	B	171	0	0	0	0
7	H	196	0	0	1	0
7	L	197	0	0	1	0
All	All	7481	0	6602	24	0

The all-atom clashscore is defined as the number of clashes found per 1000 atoms (including hydrogen atoms). The all-atom clashscore for this structure is 2.

All (24) close contacts within the same asymmetric unit are listed below, sorted by their clash magnitude.

Atom-1	Atom-2	Interatomic distance (Å)	Clash overlap (Å)
2:H:208[A]:LYS:HE3	6:H:303:GOL:O2	1.71	0.89
1:A:142[B]:ARG:HD3	1:A:163:VAL:HG11	1.68	0.74
2:B:83:ARG:HG3	2:B:85:GLU:HG2	1.73	0.69
7:H:496:HOH:O	1:L:129:GLU:HG3	2.04	0.57
1:A:78:LEU:HD11	1:A:104:LEU:HD21	1.89	0.55
1:A:145:LYS:HB3	1:A:197:THR:HB	1.90	0.53
2:H:47:TRP:HZ2	2:H:50:PHE:HB3	1.73	0.53
2:H:100[B]:ASP:HB3	2:H:101:ASP:OD2	2.11	0.49
2:B:51:THR:OG1	2:B:54:GLY:HA2	2.13	0.48
1:L:8:PRO:HG2	1:L:11:LEU:HG	1.95	0.47
1:L:155:LYS:HG3	7:L:512:HOH:O	2.14	0.46
2:H:34:MET:HB3	2:H:78:LEU:HD22	1.97	0.46
1:L:11:LEU:HD13	1:L:110:LEU:HD13	1.98	0.46
1:A:108[B]:ARG:HD3	1:A:109:THR:O	2.16	0.45
1:A:120:PRO:HG3	1:A:130:ALA:HB1	1.99	0.45
2:H:22:CYS:HB3	2:H:78:LEU:HB3	1.99	0.44
1:A:108[A]:ARG:HD3	1:A:109:THR:O	2.18	0.43
2:H:120:VAL:O	2:H:208[B]:LYS:HE3	2.18	0.43
2:H:51:THR:OG1	2:H:54:GLY:HA2	2.20	0.42
1:L:148[A]:ARG:CZ	1:L:169[A]:VAL:HG21	2.50	0.41
1:A:108[B]:ARG:HG2	1:A:171:SER:HB2	2.02	0.41
2:H:120:VAL:HG12	2:H:208[B]:LYS:HD2	2.03	0.41
1:L:151:LYS:HB3	1:L:203:THR:HB	2.01	0.41

There are no symmetry-related clashes.

5.3 Torsion angles [i](#)

5.3.1 Protein backbone [i](#)

In the following table, the Percentiles column shows the percent Ramachandran outliers of the chain as a percentile score with respect to all X-ray entries followed by that with respect to entries of similar resolution.

The Analysed column shows the number of residues for which the backbone conformation was analysed, and the total number of residues.

Mol	Chain	Analysed	Favoured	Allowed	Outliers	Percentiles	
1	A	220/220 (100%)	213 (97%)	7 (3%)	0	100	100
1	L	222/220 (101%)	216 (97%)	5 (2%)	1 (0%)	25	12
2	B	208/224 (93%)	203 (98%)	5 (2%)	0	100	100
2	H	222/224 (99%)	217 (98%)	5 (2%)	0	100	100
All	All	872/888 (98%)	849 (97%)	22 (2%)	1 (0%)	48	32

All (1) Ramachandran outliers are listed below:

Mol	Chain	Res	Type
1	L	57	ALA

5.3.2 Protein sidechains [i](#)

In the following table, the Percentiles column shows the percent sidechain outliers of the chain as a percentile score with respect to all X-ray entries followed by that with respect to entries of similar resolution.

The Analysed column shows the number of residues for which the sidechain conformation was analysed, and the total number of residues.

Mol	Chain	Analysed	Rotameric	Outliers	Percentiles	
1	A	197/196 (100%)	196 (100%)	1 (0%)	86	82
1	L	200/196 (102%)	194 (97%)	6 (3%)	36	18
2	B	175/188 (93%)	174 (99%)	1 (1%)	84	78
2	H	187/188 (100%)	185 (99%)	2 (1%)	70	58
All	All	759/768 (99%)	749 (99%)	10 (1%)	65	51

All (10) residues with a non-rotameric sidechain are listed below:

Mol	Chain	Res	Type
1	A	91	TYR
2	B	100	ASP
2	H	4	LEU
2	H	131	SER
1	L	11	LEU
1	L	27(F)	SER
1	L	45	ARG
1	L	69	SER
1	L	97	TYR
1	L	187	LEU

Sometimes sidechains can be flipped to improve hydrogen bonding and reduce clashes. There are no such sidechains identified.

5.3.3 RNA [i](#)

There are no RNA molecules in this entry.

5.4 Non-standard residues in protein, DNA, RNA chains [i](#)

There are no non-standard protein/DNA/RNA residues in this entry.

5.5 Carbohydrates [i](#)

There are no oligosaccharides in this entry.

5.6 Ligand geometry [i](#)

Of 9 ligands modelled in this entry, 4 are monoatomic - leaving 5 for Mogul analysis.

In the following table, the Counts columns list the number of bonds (or angles) for which Mogul statistics could be retrieved, the number of bonds (or angles) that are observed in the model and the number of bonds (or angles) that are defined in the Chemical Component Dictionary. The Link column lists molecule types, if any, to which the group is linked. The Z score for a bond length (or angle) is the number of standard deviations the observed value is removed from the expected value. A bond length (or angle) with $|Z| > 2$ is considered an outlier worth inspection. RMSZ is the root-mean-square of all Z scores of the bond lengths (or angles).

Mol	Type	Chain	Res	Link	Bond lengths			Bond angles		
					Counts	RMSZ	# Z > 2	Counts	RMSZ	# Z > 2
5	ACT	H	302	-	3,3,3	1.10	0	3,3,3	0.92	0
4	57S	L	303	-	28,28,28	1.09	1 (3%)	38,40,40	1.37	6 (15%)
4	57S	B	301	-	28,28,28	1.04	1 (3%)	38,40,40	0.98	1 (2%)
6	GOL	H	303	-	5,5,5	0.21	0	5,5,5	0.81	0
5	ACT	L	302	-	3,3,3	1.15	0	3,3,3	1.23	0

In the following table, the Chirals column lists the number of chiral outliers, the number of chiral centers analysed, the number of these observed in the model and the number defined in the Chemical Component Dictionary. Similar counts are reported in the Torsion and Rings columns. '-' means no outliers of that kind were identified.

Mol	Type	Chain	Res	Link	Chirals	Torsions	Rings
4	57S	B	301	-	-	2/26/46/46	0/1/1/1
6	GOL	H	303	-	-	0/4/4/4	-
4	57S	L	303	-	-	4/26/46/46	0/1/1/1

All (2) bond length outliers are listed below:

Mol	Chain	Res	Type	Atoms	Z	Observed(Å)	Ideal(Å)
4	B	301	57S	P21-O24	3.65	1.61	1.50
4	L	303	57S	P21-O24	3.44	1.61	1.50

All (7) bond angle outliers are listed below:

Mol	Chain	Res	Type	Atoms	Z	Observed(°)	Ideal(°)
4	L	303	57S	O1-C17-C25	3.50	114.12	107.47
4	B	301	57S	C1-C2-N2	-3.34	105.31	110.92
4	L	303	57S	C27-C25-C17	3.05	118.79	112.99
4	L	303	57S	C1-C2-N2	-2.82	106.18	110.92
4	L	303	57S	C29-C27-C25	2.59	117.45	112.17
4	L	303	57S	O7-C7-C8	-2.27	118.01	122.05
4	L	303	57S	C1-O5-C5	2.01	117.65	113.72

There are no chirality outliers.

All (6) torsion outliers are listed below:

Mol	Chain	Res	Type	Atoms
4	B	301	57S	O31-C27-C29-O30
4	L	303	57S	C17-C25-C27-C29
4	L	303	57S	O32-C25-C27-C29

Continued on next page...

Continued from previous page...

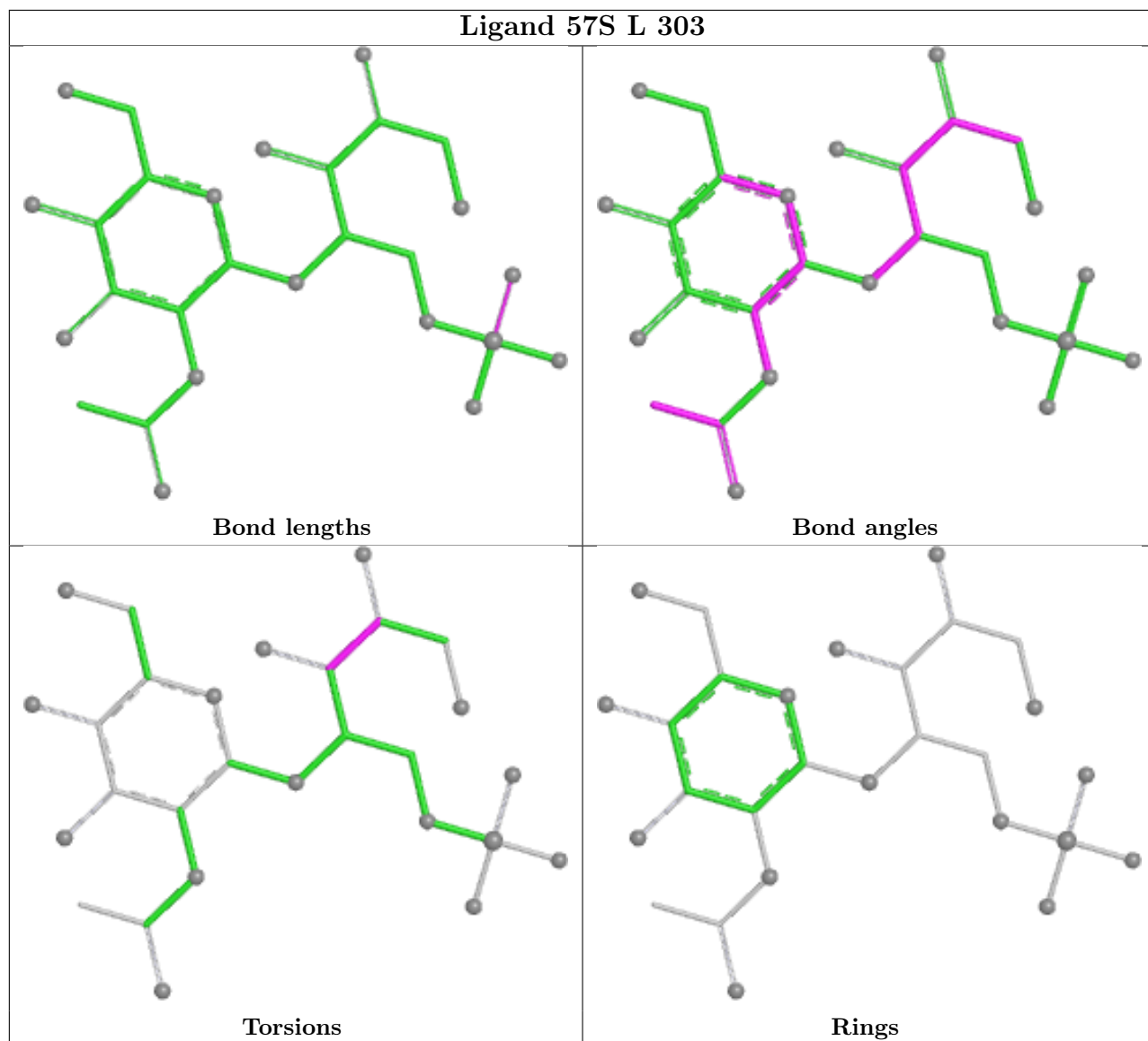
Mol	Chain	Res	Type	Atoms
4	B	301	57S	C25-C27-C29-O30
4	L	303	57S	O32-C25-C27-O31
4	L	303	57S	C17-C25-C27-O31

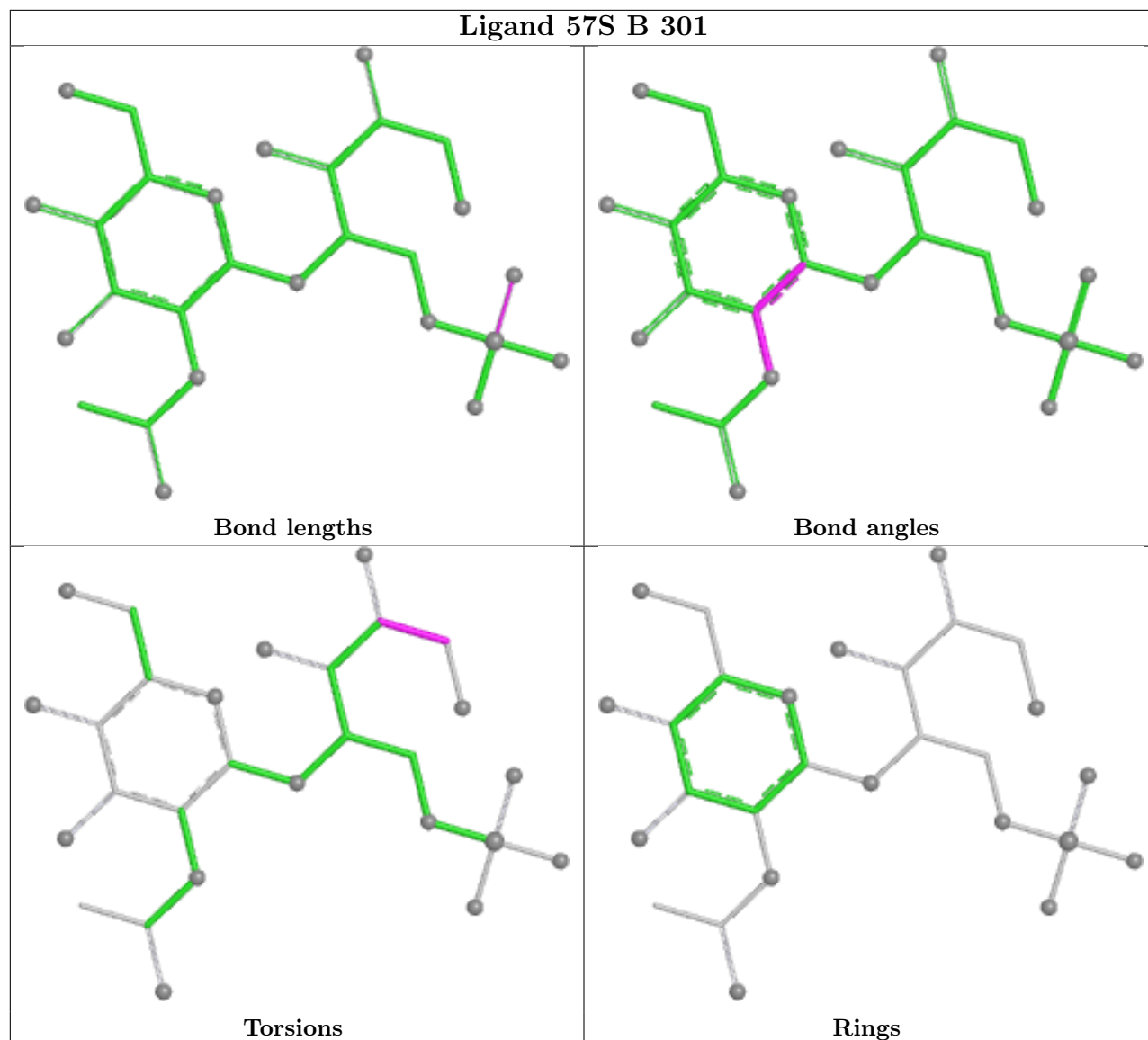
There are no ring outliers.

1 monomer is involved in 1 short contact:

Mol	Chain	Res	Type	Clashes	Symm-Clashes
6	H	303	GOL	1	0

The following is a two-dimensional graphical depiction of Mogul quality analysis of bond lengths, bond angles, torsion angles, and ring geometry for all instances of the Ligand of Interest. In addition, ligands with molecular weight > 250 and outliers as shown on the validation Tables will also be included. For torsion angles, if less than 5% of the Mogul distribution of torsion angles is within 10 degrees of the torsion angle in question, then that torsion angle is considered an outlier. Any bond that is central to one or more torsion angles identified as an outlier by Mogul will be highlighted in the graph. For rings, the root-mean-square deviation (RMSD) between the ring in question and similar rings identified by Mogul is calculated over all ring torsion angles. If the average RMSD is greater than 60 degrees and the minimal RMSD between the ring in question and any Mogul-identified rings is also greater than 60 degrees, then that ring is considered an outlier. The outliers are highlighted in purple. The color gray indicates Mogul did not find sufficient equivalents in the CSD to analyse the geometry.





5.7 Other polymers [i](#)

There are no such residues in this entry.

5.8 Polymer linkage issues [i](#)

There are no chain breaks in this entry.

6 Fit of model and data [i](#)

6.1 Protein, DNA and RNA chains [i](#)

In the following table, the column labelled ‘#RSRZ > 2’ contains the number (and percentage) of RSRZ outliers, followed by percent RSRZ outliers for the chain as percentile scores relative to all X-ray entries and entries of similar resolution. The OWAB column contains the minimum, median, 95th percentile and maximum values of the occupancy-weighted average B-factor per residue. The column labelled ‘Q < 0.9’ lists the number of (and percentage) of residues with an average occupancy less than 0.9.

Mol	Chain	Analysed	<RSRZ>	#RSRZ>2	OWAB(Å ²)	Q<0.9
1	A	219/220 (99%)	0.87	29 (13%) 8 9	21, 39, 61, 92	3 (1%)
1	L	219/220 (99%)	0.35	18 (8%) 19 21	14, 30, 52, 66	5 (2%)
2	B	210/224 (93%)	0.72	30 (14%) 7 7	17, 34, 64, 78	2 (0%)
2	H	219/224 (97%)	0.36	10 (4%) 38 42	13, 31, 56, 89	5 (2%)
All	All	867/888 (97%)	0.57	87 (10%) 14 15	13, 33, 59, 92	15 (1%)

All (87) RSRZ outliers are listed below:

Mol	Chain	Res	Type	RSRZ
2	B	126	SER	6.8
1	L	73	PHE	5.4
2	B	188	LEU	5.2
1	A	213	GLU	4.8
1	A	67	PHE	4.5
1	L	27(C)	PHE	4.5
2	B	212	PRO	4.2
1	L	98	PHE	4.1
1	L	27(E)	THR	4.0
2	H	218	CYS	3.9
2	H	132	GLY	3.9
2	B	187	SER	3.9
2	B	193	TYR	3.8
2	H	127	SER	3.7
2	B	186	SER	3.6
2	B	184	PRO	3.5
2	H	130	THR	3.5
2	B	134	THR	3.5
2	B	194	ILE	3.4
1	A	194	CYS	3.4
1	A	29	ASN	3.3

Continued on next page...

Continued from previous page...

Mol	Chain	Res	Type	RSRZ
2	B	190	THR	3.3
1	L	219	GLU	3.1
1	A	154	LEU	3.1
1	A	50	TRP	3.0
1	A	27(C)	PHE	3.0
2	B	135	ALA	3.0
2	B	183	VAL	2.9
2	B	133	GLY	2.9
1	A	69	THR	2.9
2	H	100[A]	ASP	2.8
2	B	158	LEU	2.7
1	A	191	VAL	2.7
1	A	127	SER	2.7
1	L	38	LEU	2.6
2	B	139	CYS	2.6
1	L	47	GLY	2.6
2	H	50	PHE	2.6
1	A	192	TYR	2.6
1	L	45	ARG	2.6
2	B	192	THR	2.6
1	A	41	GLY	2.6
2	B	157	ALA	2.5
1	A	68	GLY	2.5
1	A	150	VAL	2.5
2	H	129	SER	2.5
2	B	189	GLY	2.5
1	A	125	LEU	2.4
1	L	2	ILE	2.4
1	A	27(E)	THR	2.4
1	L	46	PRO	2.4
1	L	27(B)	ILE	2.4
2	B	209	LYS	2.4
1	A	126	LYS	2.3
1	L	35	ASN	2.3
1	A	211	ARG	2.3
2	B	185	SER	2.3
1	A	116	PHE	2.2
1	A	199	GLN	2.2
2	B	74	ALA	2.2
1	L	103	THR	2.2
2	H	55	THR	2.2
2	B	2	VAL	2.2

Continued on next page...

Continued from previous page...

Mol	Chain	Res	Type	RSRZ
2	B	210	VAL	2.2
1	L	23	CYS	2.2
2	H	65	GLY	2.2
1	A	51	ALA	2.1
1	A	56	SER	2.1
1	A	53	THR	2.1
1	A	209	PHE	2.1
2	B	154	ASN	2.1
1	A	212	GLY	2.1
2	B	32	PHE	2.1
1	L	27(F)	SER	2.1
2	B	100	ASP	2.1
2	B	27	PHE	2.1
1	L	27(A)	SER	2.1
2	H	131	SER	2.1
1	A	153	ALA	2.0
2	B	159	THR	2.0
1	L	3	GLN	2.0
1	A	52	SER	2.0
2	B	23	SER	2.0
1	A	32	LEU	2.0
1	A	123[A]	GLU	2.0
1	L	75	THR	2.0
2	B	182	THR	2.0

6.2 Non-standard residues in protein, DNA, RNA chains [i](#)

There are no non-standard protein/DNA/RNA residues in this entry.

6.3 Carbohydrates [i](#)

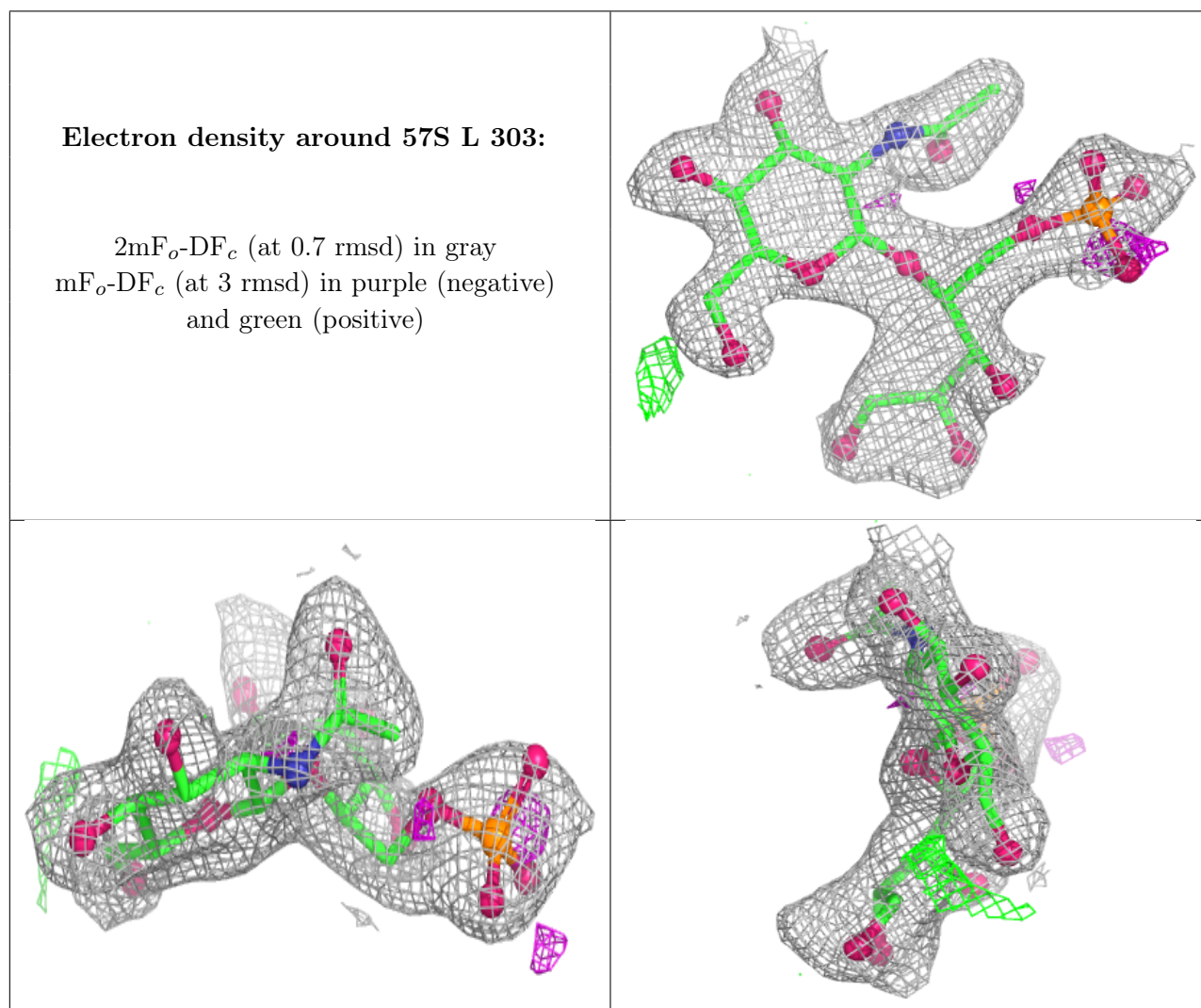
There are no monosaccharides in this entry.

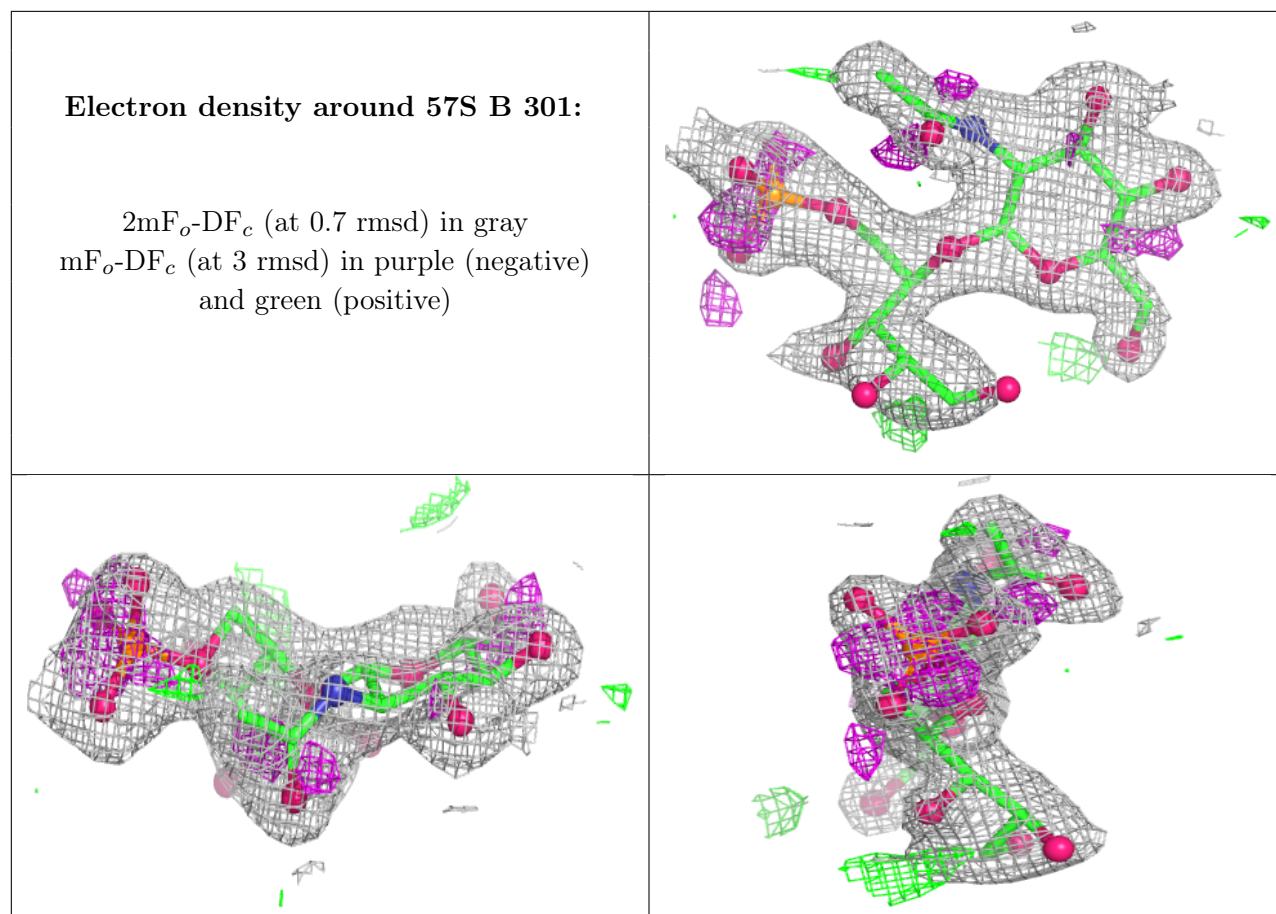
6.4 Ligands [i](#)

In the following table, the Atoms column lists the number of modelled atoms in the group and the number defined in the chemical component dictionary. The B-factors column lists the minimum, median, 95th percentile and maximum values of B factors of atoms in the group. The column labelled 'Q< 0.9' lists the number of atoms with occupancy less than 0.9.

Mol	Type	Chain	Res	Atoms	RSCC	RSR	B-factors(\AA^2)	Q<0.9
4	57S	L	303	28/28	0.80	0.16	38,57,73,74	0
6	GOL	H	303	6/6	0.82	0.15	41,45,53,55	0
5	ACT	H	302	4/4	0.83	0.19	63,65,66,69	0
4	57S	B	301	28/28	0.85	0.14	36,51,68,70	0
5	ACT	L	302	4/4	0.86	0.15	44,49,49,52	0
3	CA	H	301	1/1	0.96	0.13	41,41,41,41	0
3	CA	L	301	1/1	0.97	0.24	44,44,44,44	0
3	CA	A	301	1/1	0.98	0.09	35,35,35,35	0
3	CA	A	302	1/1	0.99	0.08	33,33,33,33	0

The following is a graphical depiction of the model fit to experimental electron density of all instances of the Ligand of Interest. In addition, ligands with molecular weight > 250 and outliers as shown on the geometry validation Tables will also be included. Each fit is shown from different orientation to approximate a three-dimensional view.





6.5 Other polymers [i](#)

There are no such residues in this entry.