



Full wwPDB X-ray Structure Validation Report ⓘ

Jan 3, 2024 – 07:40 pm GMT

PDB ID : 5CZ5
Title : Yeast 20S proteasome beta1-T1A mutant in complex with Carfilzomib
Authors : Huber, E.M.; Groll, M.
Deposited on : 2015-07-31
Resolution : 2.80 Å(reported)

This is a Full wwPDB X-ray Structure Validation Report for a publicly released PDB entry.

We welcome your comments at validation@mail.wwpdb.org

A user guide is available at

<https://www.wwpdb.org/validation/2017/XrayValidationReportHelp>

with specific help available everywhere you see the ⓘ symbol.

The types of validation reports are described at

<http://www.wwpdb.org/validation/2017/FAQs#types>.

The following versions of software and data (see [references ⓘ](#)) were used in the production of this report:

MolProbity : 4.02b-467
Mogul : 1.8.4, CSD as541be (2020)
Xtriage (Phenix) : 1.13
EDS : 2.36
buster-report : 1.1.7 (2018)
Percentile statistics : 20191225.v01 (using entries in the PDB archive December 25th 2019)
Refmac : 5.8.0158
CCP4 : 7.0.044 (Gargrove)
Ideal geometry (proteins) : Engh & Huber (2001)
Ideal geometry (DNA, RNA) : Parkinson et al. (1996)
Validation Pipeline (wwPDB-VP) : 2.36

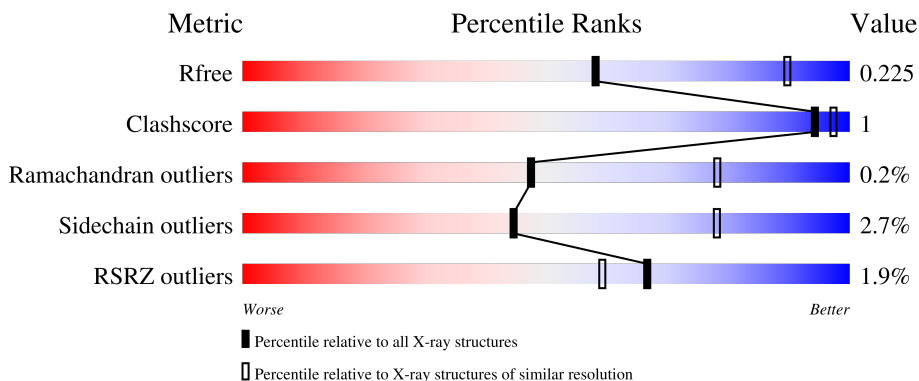
1 Overall quality at a glance

The following experimental techniques were used to determine the structure:

X-RAY DIFFRACTION

The reported resolution of this entry is 2.80 Å.

Percentile scores (ranging between 0-100) for global validation metrics of the entry are shown in the following graphic. The table shows the number of entries on which the scores are based.



Metric	Whole archive (#Entries)	Similar resolution (#Entries, resolution range(Å))
R_{free}	130704	3140 (2.80-2.80)
Clashscore	141614	3569 (2.80-2.80)
Ramachandran outliers	138981	3498 (2.80-2.80)
Sidechain outliers	138945	3500 (2.80-2.80)
RSRZ outliers	127900	3078 (2.80-2.80)

The table below summarises the geometric issues observed across the polymeric chains and their fit to the electron density. The red, orange, yellow and green segments of the lower bar indicate the fraction of residues that contain outliers for ≥ 3 , 2, 1 and 0 types of geometric quality criteria respectively. A grey segment represents the fraction of residues that are not modelled. The numeric value for each fraction is indicated below the corresponding segment, with a dot representing fractions $\leq 5\%$. The upper red bar (where present) indicates the fraction of residues that have poor fit to the electron density. The numeric value is given above the bar.

Mol	Chain	Length	Quality of chain
1	A	250	
1	O	250	
2	B	258	
2	P	258	
3	C	254	

Continued on next page...

Continued from previous page...

Mol	Chain	Length	Quality of chain
3	Q	254	6% 90% 6%
4	D	260	% 87% 10%
4	R	260	2% 87% 10%
5	E	234	2% 94% 5%
5	S	234	3% 93% 6%
6	F	288	% 81% 16%
6	T	288	2% 81% 16%
7	G	252	% 92% %
7	U	252	% 91% %
8	H	232	% 93% %
8	V	232	% 92% %
9	I	205	96% %
9	W	205	% 95% %
10	J	198	% 92% 6%
10	X	198	% 92% 6%
11	K	212	93% 7%
11	Y	212	% 94% 6%
12	L	222	95% 5%
12	Z	222	95% 5%
13	M	246	% 91% 5%
13	a	246	92% 5%
14	N	206	2% 95% 5%
14	b	206	% 99% %

2 Entry composition

There are 19 unique types of molecules in this entry. The entry contains 50027 atoms, of which 0 are hydrogens and 0 are deuteriums.

In the tables below, the ZeroOcc column contains the number of atoms modelled with zero occupancy, the AltConf column contains the number of residues with at least one atom in alternate conformation and the Trace column contains the number of residues modelled with at most 2 atoms.

- Molecule 1 is a protein called Proteasome subunit alpha type-2.

Mol	Chain	Residues	Atoms					ZeroOcc	AltConf	Trace
			Total	C	N	O	S			
1	A	250	Total	C	N	O	S	0	0	0
			1915	1219	315	377	4			
1	O	250	Total	C	N	O	S	0	0	0
			1915	1219	315	377	4			

- Molecule 2 is a protein called Proteasome subunit alpha type-3.

Mol	Chain	Residues	Atoms					ZeroOcc	AltConf	Trace
			Total	C	N	O	S			
2	B	244	Total	C	N	O	S	0	0	0
			1904	1201	321	379	3			
2	P	244	Total	C	N	O	S	0	0	0
			1904	1201	321	379	3			

- Molecule 3 is a protein called Proteasome subunit alpha type-4.

Mol	Chain	Residues	Atoms					ZeroOcc	AltConf	Trace
			Total	C	N	O	S			
3	C	240	Total	C	N	O	S	0	0	0
			1881	1176	329	372	4			
3	Q	240	Total	C	N	O	S	0	0	0
			1881	1176	329	372	4			

- Molecule 4 is a protein called Proteasome subunit alpha type-5.

Mol	Chain	Residues	Atoms					ZeroOcc	AltConf	Trace
			Total	C	N	O	S			
4	D	235	Total	C	N	O	S	0	0	0
			1813	1136	304	366	7			
4	R	235	Total	C	N	O	S	0	0	0
			1813	1136	304	366	7			

- Molecule 5 is a protein called Proteasome subunit alpha type-6.

Mol	Chain	Residues	Atoms					ZeroOcc	AltConf	Trace
			Total	C	N	O	S			
5	E	231	Total 1773	C 1114	N 307	O 348	S 4	0	0	0
5	S	231	Total 1773	C 1114	N 307	O 348	S 4	0	0	0

- Molecule 6 is a protein called Probable proteasome subunit alpha type-7.

Mol	Chain	Residues	Atoms					ZeroOcc	AltConf	Trace
			Total	C	N	O	S			
6	F	243	Total 1892	C 1203	N 329	O 356	S 4	0	0	0
6	T	243	Total 1892	C 1203	N 329	O 356	S 4	0	0	0

- Molecule 7 is a protein called Proteasome subunit alpha type-1.

Mol	Chain	Residues	Atoms					ZeroOcc	AltConf	Trace
			Total	C	N	O	S			
7	G	241	Total 1907	C 1214	N 320	O 365	S 8	0	0	0
7	U	241	Total 1906	C 1214	N 320	O 364	S 8	0	0	0

- Molecule 8 is a protein called Proteasome subunit beta type-2.

Mol	Chain	Residues	Atoms					ZeroOcc	AltConf	Trace
			Total	C	N	O	S			
8	H	222	Total 1684	C 1061	N 293	O 323	S 7	0	0	0
8	V	222	Total 1684	C 1061	N 293	O 323	S 7	0	0	0

- Molecule 9 is a protein called Proteasome subunit beta type-3.

Mol	Chain	Residues	Atoms					ZeroOcc	AltConf	Trace
			Total	C	N	O	S			
9	I	204	Total 1581	C 1010	N 258	O 305	S 8	0	0	0
9	W	204	Total 1581	C 1010	N 258	O 305	S 8	0	0	0

- Molecule 10 is a protein called Proteasome subunit beta type-4.

Mol	Chain	Residues	Atoms					ZeroOcc	AltConf	Trace
			Total	C	N	O	S			
10	J	195	Total 1561	C 992	N 264	O 299	S 6	0	0	0

Continued on next page...

Continued from previous page...

Mol	Chain	Residues	Atoms					ZeroOcc	AltConf	Trace
			Total	C	N	O	S			
10	X	195	1561	992	264	299	6	0	0	0

- Molecule 11 is a protein called Proteasome subunit beta type-5.

Mol	Chain	Residues	Atoms					ZeroOcc	AltConf	Trace
			Total	C	N	O	S			
11	K	212	1644	1045	280	312	7	0	0	0
11	Y	212	1644	1045	280	312	7	0	0	0

- Molecule 12 is a protein called Proteasome subunit beta type-6.

Mol	Chain	Residues	Atoms					ZeroOcc	AltConf	Trace
			Total	C	N	O	S			
12	L	222	1757	1115	303	335	4	0	0	0
12	Z	222	1757	1115	303	335	4	0	0	0

- Molecule 13 is a protein called Proteasome subunit beta type-7.

Mol	Chain	Residues	Atoms					ZeroOcc	AltConf	Trace
			Total	C	N	O	S			
13	M	233	1824	1154	312	351	7	0	0	0
13	a	233	1824	1154	312	351	7	0	0	0

- Molecule 14 is a protein called Proteasome subunit beta type-1.

Mol	Chain	Residues	Atoms					ZeroOcc	AltConf	Trace
			Total	C	N	O	S			
14	N	206	1585	1001	265	312	7	0	0	0
14	b	206	1585	1001	265	312	7	0	0	0

There are 2 discrepancies between the modelled and reference sequences:

Chain	Residue	Modelled	Actual	Comment	Reference
N	1	ALA	THR	engineered mutation	UNP P38624
b	1	ALA	THR	engineered mutation	UNP P38624

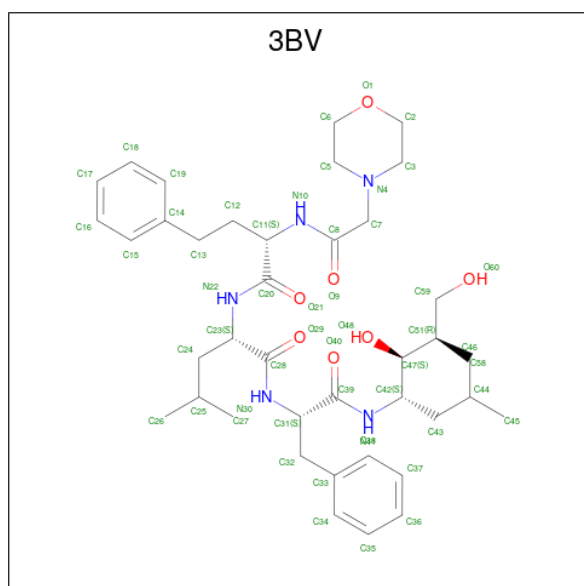
- Molecule 15 is MAGNESIUM ION (three-letter code: MG) (formula: Mg).

Mol	Chain	Residues	Atoms	ZeroOcc	AltConf
15	G	2	Total Mg 2 2	0	0
15	I	2	Total Mg 2 2	0	0
15	K	1	Total Mg 1 1	0	0
15	L	1	Total Mg 1 1	0	0
15	N	1	Total Mg 1 1	0	0
15	Z	1	Total Mg 1 1	0	0

- Molecule 16 is CHLORIDE ION (three-letter code: CL) (formula: Cl).

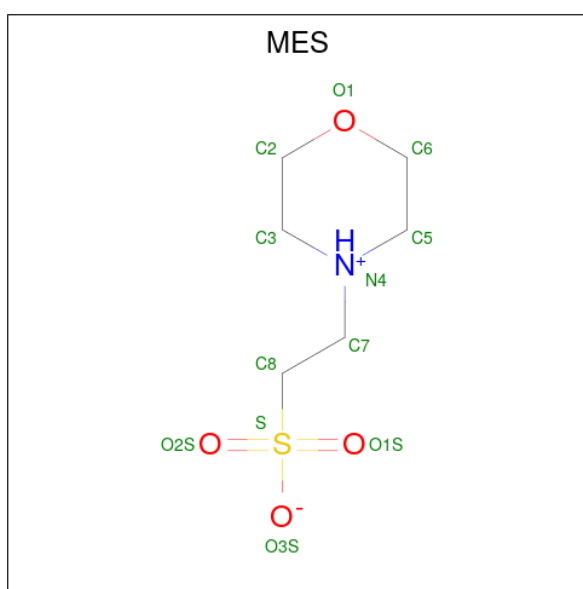
Mol	Chain	Residues	Atoms	ZeroOcc	AltConf
16	G	1	Total Cl 1 1	0	0
16	N	1	Total Cl 1 1	0	0
16	U	1	Total Cl 1 1	0	0
16	b	1	Total Cl 1 1	0	0

- Molecule 17 is N-{(2S)-2-[(morpholin-4-ylacetyl)amino]-4-phenylbutanoyl}-L-leucyl-N-[(2R,3S,4S)-1,3-dihydroxy-2,6-dimethylheptan-4-yl]-L-phenylalaninamide (three-letter code: 3BV) (formula: C₄₀H₆₁N₅O₇).



Mol	Chain	Residues	Atoms				ZeroOcc	AltConf
17	H	1	Total	C	N	O	0	0
			52	40	5	7		
17	K	1	Total	C	N	O	0	0
			52	40	5	7		
17	V	1	Total	C	N	O	0	0
			52	40	5	7		
17	Y	1	Total	C	N	O	0	0
			52	40	5	7		

- Molecule 18 is 2-(N-MORPHOLINO)-ETHANESULFONIC ACID (three-letter code: MES) (formula: C₆H₁₃NO₄S).



Mol	Chain	Residues	Atoms					ZeroOcc	AltConf
18	H	1	Total	C	N	O	S	0	0
			12	6	1	4	1		
18	K	1	Total	C	N	O	S	0	0
			12	6	1	4	1		
18	V	1	Total	C	N	O	S	0	0
			12	6	1	4	1		
18	Y	1	Total	C	N	O	S	0	0
			12	6	1	4	1		

- Molecule 19 is water.

Mol	Chain	Residues	Atoms		ZeroOcc	AltConf
19	A	13	Total	O	0	0
			13	13		

Continued on next page...

Continued from previous page...

Mol	Chain	Residues	Atoms	ZeroOcc	AltConf
19	B	9	Total O 9 9	0	0
19	C	16	Total O 16 16	0	0
19	D	9	Total O 9 9	0	0
19	E	3	Total O 3 3	0	0
19	F	6	Total O 6 6	0	0
19	G	8	Total O 8 8	0	0
19	H	12	Total O 12 12	0	0
19	I	14	Total O 14 14	0	0
19	J	21	Total O 21 21	0	0
19	K	15	Total O 15 15	0	0
19	L	22	Total O 22 22	0	0
19	M	8	Total O 8 8	0	0
19	N	10	Total O 10 10	0	0
19	O	9	Total O 9 9	0	0
19	P	12	Total O 12 12	0	0
19	Q	7	Total O 7 7	0	0
19	R	3	Total O 3 3	0	0
19	S	6	Total O 6 6	0	0
19	T	8	Total O 8 8	0	0
19	U	14	Total O 14 14	0	0
19	V	8	Total O 8 8	0	0

Continued on next page...

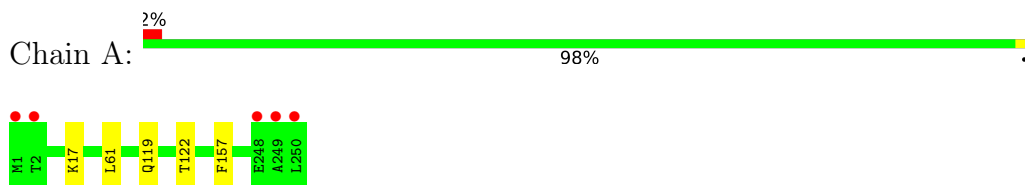
Continued from previous page...

Mol	Chain	Residues	Atoms	ZeroOcc	AltConf
19	W	10	Total O 10 10	0	0
19	X	17	Total O 17 17	0	0
19	Y	14	Total O 14 14	0	0
19	Z	13	Total O 13 13	0	0
19	a	20	Total O 20 20	0	0
19	b	11	Total O 11 11	0	0

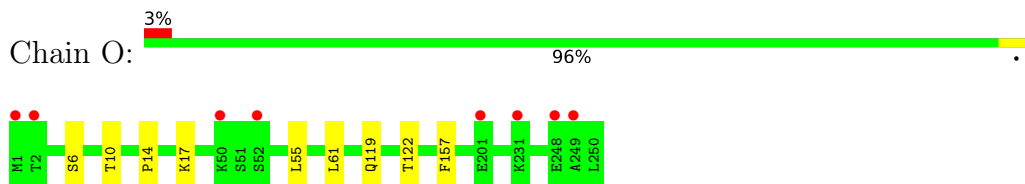
3 Residue-property plots [i](#)

These plots are drawn for all protein, RNA, DNA and oligosaccharide chains in the entry. The first graphic for a chain summarises the proportions of the various outlier classes displayed in the second graphic. The second graphic shows the sequence view annotated by issues in geometry and electron density. Residues are color-coded according to the number of geometric quality criteria for which they contain at least one outlier: green = 0, yellow = 1, orange = 2 and red = 3 or more. A red dot above a residue indicates a poor fit to the electron density ($RSRZ > 2$). Stretches of 2 or more consecutive residues without any outlier are shown as a green connector. Residues present in the sample, but not in the model, are shown in grey.

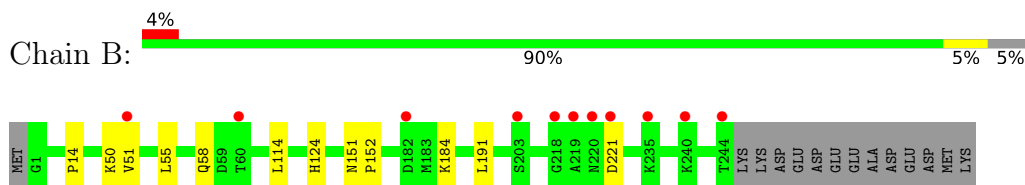
- Molecule 1: Proteasome subunit alpha type-2



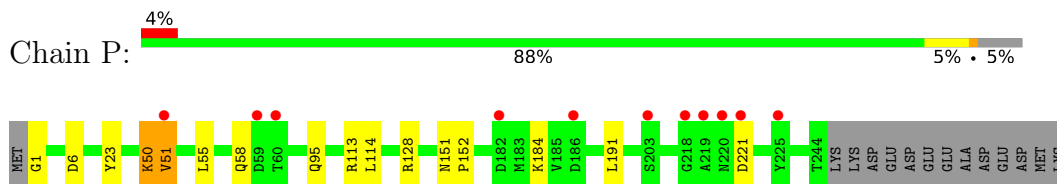
- Molecule 1: Proteasome subunit alpha type-2



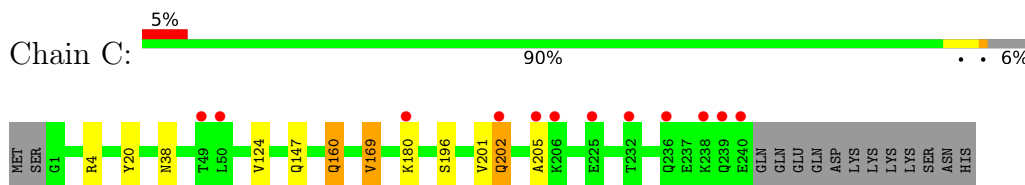
- Molecule 2: Proteasome subunit alpha type-3



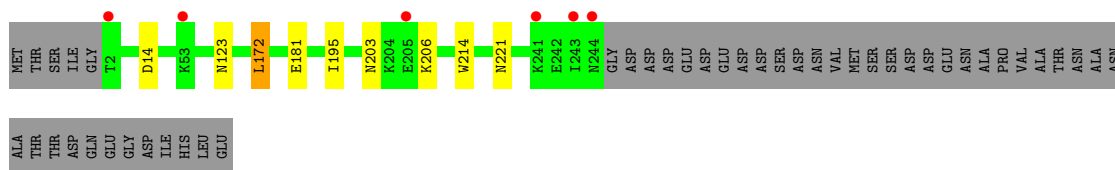
- Molecule 2: Proteasome subunit alpha type-3



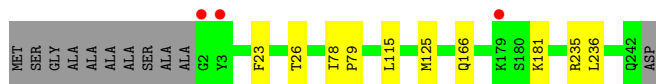
- Molecule 3: Proteasome subunit alpha type-4



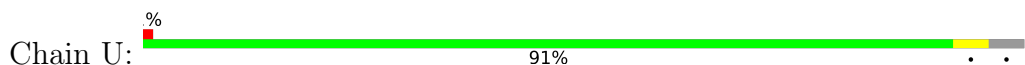
- Molecule 3: Proteasome subunit alpha type-4



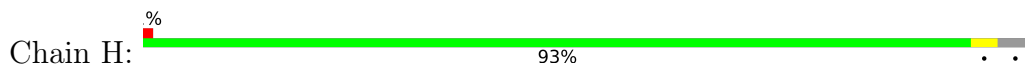
- Molecule 7: Proteasome subunit alpha type-1



- Molecule 7: Proteasome subunit alpha type-1



- Molecule 8: Proteasome subunit beta type-2



- Molecule 8: Proteasome subunit beta type-2



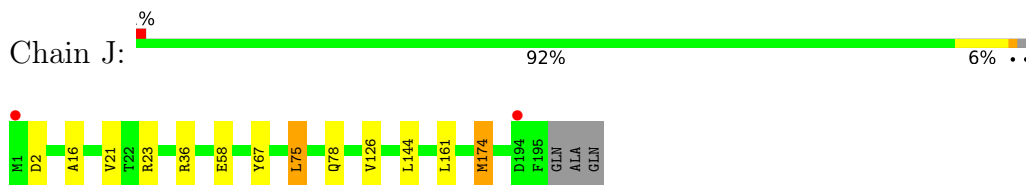
- Molecule 9: Proteasome subunit beta type-3



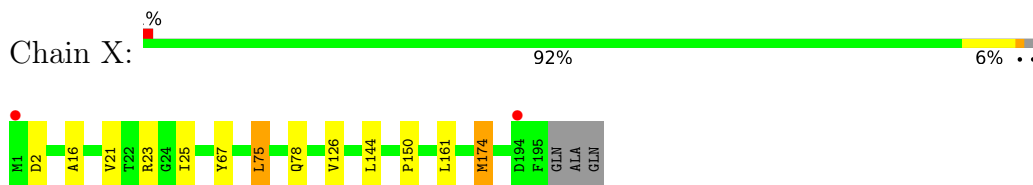
- Molecule 9: Proteasome subunit beta type-3



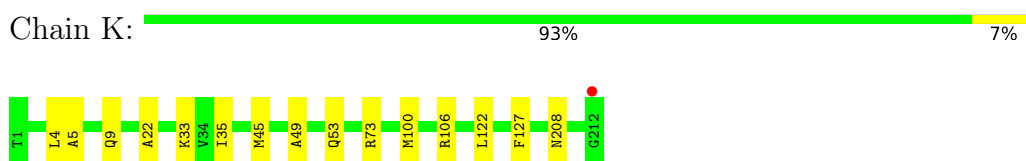
- Molecule 10: Proteasome subunit beta type-4



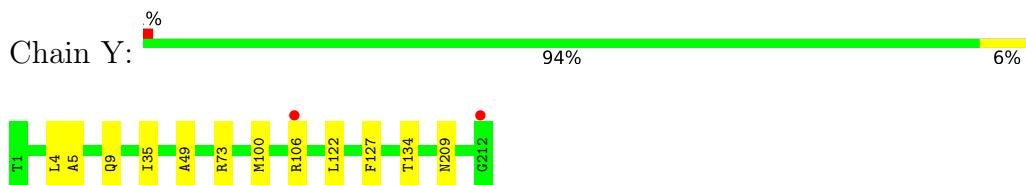
- Molecule 10: Proteasome subunit beta type-4



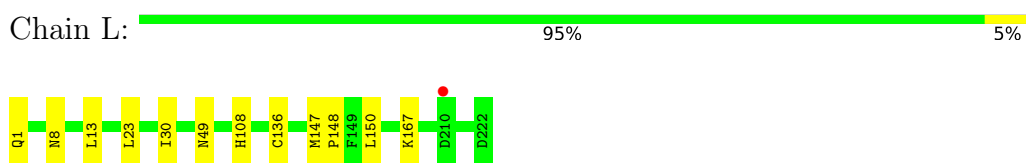
- Molecule 11: Proteasome subunit beta type-5



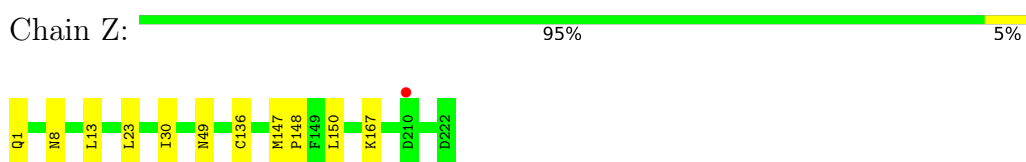
- Molecule 11: Proteasome subunit beta type-5



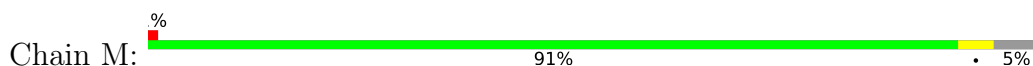
- Molecule 12: Proteasome subunit beta type-6

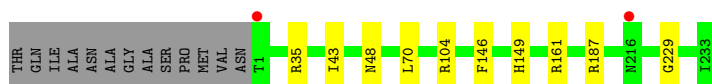


- Molecule 12: Proteasome subunit beta type-6



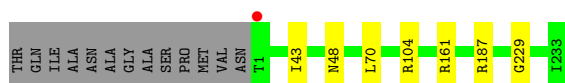
- Molecule 13: Proteasome subunit beta type-7





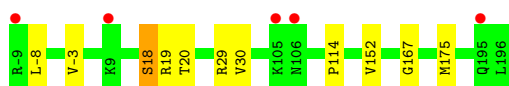
- Molecule 13: Proteasome subunit beta type-7

Chain a: 92% 5%



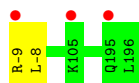
- Molecule 14: Proteasome subunit beta type-1

Chain N: 95% 2% 5%



- Molecule 14: Proteasome subunit beta type-1

Chain b: 99% 1%



4 Data and refinement statistics

Property	Value	Source
Space group	P 1 21 1	Depositor
Cell constants a, b, c, α , β , γ	136.77Å 300.42Å 145.34Å 90.00° 113.14° 90.00°	Depositor
Resolution (Å)	15.00 – 2.80 15.00 – 2.80	Depositor EDS
% Data completeness (in resolution range)	98.0 (15.00-2.80) 98.1 (15.00-2.80)	Depositor EDS
R_{merge}	0.07	Depositor
R_{sym}	(Not available)	Depositor
$\langle I/\sigma(I) \rangle$ ¹	2.87 (at 2.81Å)	Xtrriage
Refinement program	REFMAC 5.7.0032	Depositor
R, R_{free}	0.201 , 0.222 0.204 , 0.225	Depositor DCC
R_{free} test set	12846 reflections (5.00%)	wwPDB-VP
Wilson B-factor (Å ²)	58.2	Xtrriage
Anisotropy	0.060	Xtrriage
Bulk solvent k_{sol} (e/Å ³), B_{sol} (Å ²)	0.30 , 34.2	EDS
L-test for twinning ²	$\langle L \rangle = 0.49$, $\langle L^2 \rangle = 0.33$	Xtrriage
Estimated twinning fraction	No twinning to report.	Xtrriage
F_o, F_c correlation	0.94	EDS
Total number of atoms	50027	wwPDB-VP
Average B, all atoms (Å ²)	66.0	wwPDB-VP

Xtrriage's analysis on translational NCS is as follows: *The largest off-origin peak in the Patterson function is 2.45% of the height of the origin peak. No significant pseudotranslation is detected.*

¹Intensities estimated from amplitudes.

²Theoretical values of $\langle |L| \rangle$, $\langle L^2 \rangle$ for acentric reflections are 0.5, 0.333 respectively for untwinned datasets, and 0.375, 0.2 for perfectly twinned datasets.

5 Model quality [i](#)

5.1 Standard geometry [i](#)

Bond lengths and bond angles in the following residue types are not validated in this section: MG, 3BV, CL, MES

The Z score for a bond length (or angle) is the number of standard deviations the observed value is removed from the expected value. A bond length (or angle) with $|Z| > 5$ is considered an outlier worth inspection. RMSZ is the root-mean-square of all Z scores of the bond lengths (or angles).

Mol	Chain	Bond lengths		Bond angles	
		RMSZ	# Z >5	RMSZ	# Z >5
1	A	0.27	0/1952	0.47	0/2642
1	O	0.27	0/1952	0.47	0/2642
2	B	0.27	0/1934	0.48	0/2618
2	P	0.27	0/1934	0.48	0/2618
3	C	0.27	0/1910	0.50	0/2586
3	Q	0.27	0/1910	0.50	0/2586
4	D	0.27	0/1837	0.47	0/2475
4	R	0.27	0/1837	0.47	0/2475
5	E	0.27	0/1800	0.46	0/2433
5	S	0.27	0/1800	0.46	0/2433
6	F	0.28	0/1932	0.45	0/2609
6	T	0.27	0/1932	0.45	0/2609
7	G	0.27	0/1945	0.46	0/2634
7	U	0.27	0/1944	0.46	0/2632
8	H	0.28	0/1715	0.47	0/2326
8	V	0.26	0/1715	0.46	0/2326
9	I	0.28	0/1611	0.48	0/2174
9	W	0.27	0/1611	0.48	0/2174
10	J	0.27	0/1589	0.48	0/2142
10	X	0.26	0/1589	0.48	0/2142
11	K	0.29	0/1681	0.49	0/2274
11	Y	0.29	0/1681	0.49	0/2274
12	L	0.28	0/1795	0.47	0/2420
12	Z	0.27	0/1795	0.47	0/2420
13	M	0.32	0/1855	0.52	0/2514
13	a	0.30	0/1855	0.52	0/2514
14	N	0.51	0/1614	0.52	0/2182
14	b	0.37	0/1614	0.54	2/2182 (0.1%)
All	All	0.29	0/50339	0.48	2/68056 (0.0%)

There are no bond length outliers.

All (2) bond angle outliers are listed below:

Mol	Chain	Res	Type	Atoms	Z	Observed(°)	Ideal(°)
14	b	-9	ARG	NE-CZ-NH2	-7.54	116.53	120.30
14	b	-9	ARG	NE-CZ-NH1	5.91	123.25	120.30

There are no chirality outliers.

There are no planarity outliers.

5.2 Too-close contacts [\(i\)](#)

In the following table, the Non-H and H(model) columns list the number of non-hydrogen atoms and hydrogen atoms in the chain respectively. The H(added) column lists the number of hydrogen atoms added and optimized by MolProbity. The Clashes column lists the number of clashes within the asymmetric unit, whereas Symm-Clashes lists symmetry-related clashes.

Mol	Chain	Non-H	H(model)	H(added)	Clashes	Symm-Clashes
1	A	1915	0	1929	1	0
1	O	1915	0	1929	6	0
2	B	1904	0	1904	3	0
2	P	1904	0	1904	10	0
3	C	1881	0	1895	6	0
3	Q	1881	0	1895	6	0
4	D	1813	0	1797	0	0
4	R	1813	0	1797	2	0
5	E	1773	0	1775	2	0
5	S	1773	0	1775	6	0
6	F	1892	0	1883	1	0
6	T	1892	0	1883	1	0
7	G	1907	0	1901	2	0
7	U	1906	0	1901	3	0
8	H	1684	0	1685	2	0
8	V	1684	0	1686	4	0
9	I	1581	0	1574	4	0
9	W	1581	0	1574	4	0
10	J	1561	0	1569	6	0
10	X	1561	0	1569	8	0
11	K	1644	0	1593	11	0
11	Y	1644	0	1593	8	0
12	L	1757	0	1711	6	0
12	Z	1757	0	1711	3	0
13	M	1824	0	1832	3	0
13	a	1824	0	1832	0	0

Continued on next page...

Continued from previous page...

Mol	Chain	Non-H	H(model)	H(added)	Clashes	Symm-Clashes
14	N	1585	0	1564	10	0
14	b	1585	0	1566	0	0
15	G	2	0	0	0	0
15	I	2	0	0	0	0
15	K	1	0	0	0	0
15	L	1	0	0	0	0
15	N	1	0	0	0	0
15	Z	1	0	0	0	0
16	G	1	0	0	0	0
16	N	1	0	0	0	0
16	U	1	0	0	0	0
16	b	1	0	0	0	0
17	H	52	0	58	5	0
17	K	52	0	58	9	0
17	V	52	0	58	3	0
17	Y	52	0	58	2	0
18	H	12	0	13	2	0
18	K	12	0	13	0	0
18	V	12	0	13	0	0
18	Y	12	0	13	0	0
19	A	13	0	0	0	0
19	B	9	0	0	0	0
19	C	16	0	0	0	0
19	D	9	0	0	0	0
19	E	3	0	0	0	0
19	F	6	0	0	0	0
19	G	8	0	0	0	0
19	H	12	0	0	0	0
19	I	14	0	0	0	0
19	J	21	0	0	0	0
19	K	15	0	0	0	0
19	L	22	0	0	0	0
19	M	8	0	0	0	0
19	N	10	0	0	0	0
19	O	9	0	0	0	0
19	P	12	0	0	1	0
19	Q	7	0	0	0	0
19	R	3	0	0	0	0
19	S	6	0	0	0	0
19	T	8	0	0	0	0
19	U	14	0	0	0	0
19	V	8	0	0	0	0

Continued on next page...

Continued from previous page...

Mol	Chain	Non-H	H(model)	H(added)	Clashes	Symm-Clashes
19	W	10	0	0	0	0
19	X	17	0	0	0	0
19	Y	14	0	0	0	0
19	Z	13	0	0	0	0
19	a	20	0	0	0	0
19	b	11	0	0	0	0
All	All	50027	0	49511	103	0

The all-atom clashscore is defined as the number of clashes found per 1000 atoms (including hydrogen atoms). The all-atom clashscore for this structure is 1.

All (103) close contacts within the same asymmetric unit are listed below, sorted by their clash magnitude.

Atom-1	Atom-2	Interatomic distance (Å)	Clash overlap (Å)
17:H:301:3BV:O60	18:H:302:MES:O1S	1.55	1.22
17:H:301:3BV:O60	18:H:302:MES:S	2.41	0.78
8:V:168:GLY:O	17:V:301:3BV:H57	1.94	0.68
12:Z:13:LEU:HD13	12:Z:150:LEU:HD21	1.79	0.65
12:L:13:LEU:HD13	12:L:150:LEU:HD21	1.79	0.64
10:J:174:MET:HA	10:X:174:MET:HA	1.79	0.63
17:Y:301:3BV:O60	17:Y:301:3BV:O48	2.17	0.62
14:N:18:SER:OG	14:N:29:ARG:O	2.19	0.59
11:Y:5:ALA:HB3	11:Y:100:MET:HE2	1.83	0.58
17:V:301:3BV:O48	17:V:301:3BV:O60	2.18	0.58
1:O:55:LEU:HB3	7:U:159:ALA:O	2.04	0.57
17:H:301:3BV:O60	17:H:301:3BV:O48	2.16	0.56
11:K:33:LYS:HZ1	17:K:301:3BV:H58	1.72	0.55
9:W:36:SER:HB2	10:X:126:VAL:HG11	1.87	0.55
11:K:5:ALA:HB3	11:K:100:MET:HE2	1.89	0.54
11:K:100:MET:HE3	11:K:127:PHE:HB2	1.89	0.53
14:N:-3:VAL:CG1	14:N:20:THR:CG2	2.86	0.53
11:K:33:LYS:NZ	17:K:301:3BV:H58	2.23	0.53
17:K:301:3BV:H16	12:L:108:HIS:CE1	2.44	0.52
7:G:23:PHE:O	7:G:26:THR:HB	2.09	0.52
10:X:21:VAL:HG11	11:Y:122:LEU:HD11	1.91	0.52
2:P:1:GLY:HA3	5:S:122:TYR:CD1	2.45	0.52
10:J:67:TYR:CE1	10:J:75:LEU:HD13	2.45	0.51
17:H:301:3BV:O9	17:H:301:3BV:H16	2.10	0.51
2:P:113:ARG:NH1	19:P:301:HOH:O	2.44	0.51
10:X:67:TYR:CE1	10:X:75:LEU:HD13	2.46	0.51
7:U:23:PHE:O	7:U:26:THR:HB	2.11	0.51

Continued on next page...

Continued from previous page...

Atom-1	Atom-2	Interatomic distance (Å)	Clash overlap (Å)
3:Q:201:VAL:O	3:Q:202:GLN:CB	2.60	0.50
17:K:301:3BV:H16	12:L:108:HIS:NE2	2.26	0.49
1:O:122:THR:HG22	2:P:128:ARG:HH21	1.76	0.49
4:R:158:ARG:HB3	5:S:57:SER:HB3	1.95	0.49
3:C:201:VAL:O	3:C:202:GLN:CB	2.60	0.49
11:Y:100:MET:HE3	11:Y:127:PHE:HB2	1.95	0.48
10:X:25:ILE:HD11	11:Y:134:THR:HG21	1.96	0.48
10:X:25:ILE:CD1	11:Y:134:THR:HG21	2.44	0.48
14:N:-3:VAL:HG13	14:N:20:THR:HG22	1.96	0.47
4:R:159:TYR:CE2	5:S:56:SER:HB3	2.48	0.47
9:I:36:SER:HB2	10:J:126:VAL:HG11	1.97	0.47
3:Q:169:VAL:HG23	3:Q:196:SER:HB2	1.97	0.47
3:C:169:VAL:HG23	3:C:196:SER:HB2	1.97	0.47
5:S:87:LEU:HD21	5:S:107:ALA:HB1	1.97	0.47
8:V:49:ALA:HA	17:V:301:3BV:H50	1.97	0.47
2:P:1:GLY:HA3	5:S:122:TYR:CE1	2.49	0.46
5:E:87:LEU:HD21	5:E:107:ALA:HB1	1.97	0.46
8:H:104:ASP:HB2	8:H:105:PRO:HD2	1.97	0.46
9:I:20:VAL:HG13	9:I:118:PRO:HB3	1.98	0.46
2:P:6:ASP:OD2	3:Q:4:ARG:HG3	2.16	0.45
2:B:14:PRO:HA	3:C:20:TYR:CE1	2.50	0.45
8:V:104:ASP:HB2	8:V:105:PRO:HD2	1.98	0.45
9:W:20:VAL:HG13	9:W:118:PRO:HB3	1.98	0.45
10:X:16:ALA:HB2	10:X:161:LEU:HD21	1.99	0.45
11:K:45:MET:HE1	11:K:53:GLN:HG3	1.99	0.45
10:J:16:ALA:HB2	10:J:161:LEU:HD21	1.98	0.45
11:K:49:ALA:HA	17:K:301:3BV:H50	1.99	0.45
2:B:124:HIS:HB3	3:C:124:VAL:HG12	1.99	0.44
14:N:-3:VAL:CG1	14:N:20:THR:HG21	2.47	0.44
11:Y:49:ALA:HA	17:Y:301:3BV:H50	2.00	0.44
14:N:29:ARG:HG3	14:N:30:VAL:HG13	2.00	0.43
1:O:10:THR:O	2:P:128:ARG:HD3	2.18	0.43
3:Q:201:VAL:HG13	3:Q:202:GLN:N	2.33	0.43
17:K:301:3BV:H59	17:K:301:3BV:H44	1.78	0.43
3:C:201:VAL:HG13	3:C:202:GLN:N	2.33	0.43
6:F:172:LEU:CD1	6:F:195:ILE:HD13	2.49	0.43
9:I:10:ILE:HG21	9:I:141:ALA:HB3	2.00	0.43
12:L:8:ASN:HA	12:L:30:ILE:O	2.19	0.43
2:P:95:GLN:HB3	9:W:68:TYR:CD2	2.54	0.43
10:J:21:VAL:HG11	11:K:122:LEU:HD11	2.00	0.43
3:Q:160:GLN:HE21	3:Q:160:GLN:HA	1.84	0.43

Continued on next page...

Continued from previous page...

Atom-1	Atom-2	Interatomic distance (Å)	Clash overlap (Å)
6:T:172:LEU:CD1	6:T:195:ILE:HD13	2.49	0.43
13:M:146:PHE:O	13:M:149:HIS:N	2.46	0.42
11:K:208:ASN:CG	10:X:150:PRO:HD3	2.39	0.42
14:N:-3:VAL:CG1	14:N:20:THR:HG22	2.49	0.42
1:O:119:GLN:O	1:O:122:THR:HB	2.20	0.42
9:W:10:ILE:HG21	9:W:141:ALA:HB3	2.01	0.42
11:Y:100:MET:CE	11:Y:127:PHE:HB2	2.50	0.42
3:C:160:GLN:HE21	3:C:160:GLN:HA	1.83	0.42
11:K:100:MET:CE	11:K:127:PHE:HB2	2.50	0.42
14:N:19:ARG:NH1	14:N:167:GLY:O	2.49	0.42
7:G:78:ILE:N	7:G:79:PRO:CD	2.83	0.42
1:O:6:SER:OG	3:Q:2:TYR:HA	2.20	0.42
1:O:14:PRO:HA	2:P:23:TYR:CD1	2.55	0.42
12:Z:8:ASN:HA	12:Z:30:ILE:O	2.19	0.42
2:P:151:ASN:HB2	2:P:152:PRO:CD	2.50	0.41
1:A:119:GLN:O	1:A:122:THR:HB	2.20	0.41
9:I:37:ASN:ND2	11:Y:209:ASN:O	2.54	0.41
14:N:152:VAL:HA	14:N:175:MET:HE1	2.01	0.41
7:U:78:ILE:N	7:U:79:PRO:CD	2.83	0.41
11:K:22:ALA:HB1	17:K:301:3BV:H1	2.03	0.41
17:K:301:3BV:O9	17:K:301:3BV:H2	2.21	0.41
12:L:13:LEU:CD1	12:L:150:LEU:HD21	2.50	0.41
13:M:35:ARG:NH2	14:N:114:PRO:HB3	2.36	0.41
12:Z:147:MET:N	12:Z:148:PRO:HD2	2.35	0.41
11:K:45:MET:CE	11:K:53:GLN:HG3	2.50	0.41
8:H:49:ALA:HA	17:H:301:3BV:H50	2.03	0.41
2:P:50:LYS:O	2:P:51:VAL:C	2.59	0.40
2:B:151:ASN:HB2	2:B:152:PRO:CD	2.51	0.40
12:L:147:MET:N	12:L:148:PRO:HD2	2.36	0.40
13:M:35:ARG:HH22	14:N:114:PRO:HB3	1.86	0.40
10:J:36:ARG:NH1	10:J:58:GLU:OE2	2.54	0.40
5:S:77:ALA:N	5:S:78:PRO:CD	2.85	0.40
5:E:77:ALA:N	5:E:78:PRO:CD	2.85	0.40
17:K:301:3BV:O48	17:K:301:3BV:O60	2.18	0.40
8:V:84:LYS:HG3	8:V:85:GLN:N	2.37	0.40

There are no symmetry-related clashes.

5.3 Torsion angles [i](#)

5.3.1 Protein backbone [i](#)

In the following table, the Percentiles column shows the percent Ramachandran outliers of the chain as a percentile score with respect to all X-ray entries followed by that with respect to entries of similar resolution.

The Analysed column shows the number of residues for which the backbone conformation was analysed, and the total number of residues.

Mol	Chain	Analysed	Favoured	Allowed	Outliers	Percentiles	
1	A	248/250 (99%)	242 (98%)	6 (2%)	0	100	100
1	O	248/250 (99%)	242 (98%)	6 (2%)	0	100	100
2	B	242/258 (94%)	234 (97%)	6 (2%)	2 (1%)	19	49
2	P	242/258 (94%)	234 (97%)	6 (2%)	2 (1%)	19	49
3	C	238/254 (94%)	230 (97%)	6 (2%)	2 (1%)	19	49
3	Q	238/254 (94%)	230 (97%)	6 (2%)	2 (1%)	19	49
4	D	231/260 (89%)	226 (98%)	5 (2%)	0	100	100
4	R	231/260 (89%)	226 (98%)	5 (2%)	0	100	100
5	E	229/234 (98%)	224 (98%)	5 (2%)	0	100	100
5	S	229/234 (98%)	224 (98%)	5 (2%)	0	100	100
6	F	241/288 (84%)	233 (97%)	8 (3%)	0	100	100
6	T	241/288 (84%)	234 (97%)	7 (3%)	0	100	100
7	G	239/252 (95%)	235 (98%)	4 (2%)	0	100	100
7	U	239/252 (95%)	235 (98%)	4 (2%)	0	100	100
8	H	220/232 (95%)	215 (98%)	5 (2%)	0	100	100
8	V	220/232 (95%)	215 (98%)	5 (2%)	0	100	100
9	I	202/205 (98%)	195 (96%)	7 (4%)	0	100	100
9	W	202/205 (98%)	195 (96%)	7 (4%)	0	100	100
10	J	193/198 (98%)	190 (98%)	2 (1%)	1 (0%)	29	61
10	X	193/198 (98%)	190 (98%)	2 (1%)	1 (0%)	29	61
11	K	210/212 (99%)	207 (99%)	3 (1%)	0	100	100
11	Y	210/212 (99%)	207 (99%)	3 (1%)	0	100	100
12	L	220/222 (99%)	216 (98%)	4 (2%)	0	100	100
12	Z	220/222 (99%)	216 (98%)	4 (2%)	0	100	100
13	M	231/246 (94%)	219 (95%)	11 (5%)	1 (0%)	34	66

Continued on next page...

Continued from previous page...

Mol	Chain	Analysed	Favoured	Allowed	Outliers	Percentiles	
13	a	231/246 (94%)	221 (96%)	9 (4%)	1 (0%)	34	66
14	N	204/206 (99%)	197 (97%)	7 (3%)	0	100	100
14	b	204/206 (99%)	197 (97%)	7 (3%)	0	100	100
All	All	6296/6634 (95%)	6129 (97%)	155 (2%)	12 (0%)	47	78

All (12) Ramachandran outliers are listed below:

Mol	Chain	Res	Type
2	B	51	VAL
3	C	202	GLN
2	P	51	VAL
3	Q	202	GLN
3	C	205	ALA
3	Q	205	ALA
2	B	221	ASP
10	J	2	ASP
2	P	221	ASP
10	X	2	ASP
13	M	229	GLY
13	a	229	GLY

5.3.2 Protein sidechains [i](#)

In the following table, the Percentiles column shows the percent sidechain outliers of the chain as a percentile score with respect to all X-ray entries followed by that with respect to entries of similar resolution.

The Analysed column shows the number of residues for which the sidechain conformation was analysed, and the total number of residues.

Mol	Chain	Analysed	Rotameric	Outliers	Percentiles	
1	A	209/209 (100%)	206 (99%)	3 (1%)	67	90
1	O	209/209 (100%)	206 (99%)	3 (1%)	67	90
2	B	203/216 (94%)	197 (97%)	6 (3%)	41	75
2	P	203/216 (94%)	197 (97%)	6 (3%)	41	75
3	C	212/226 (94%)	206 (97%)	6 (3%)	43	77
3	Q	212/226 (94%)	206 (97%)	6 (3%)	43	77
4	D	194/215 (90%)	186 (96%)	8 (4%)	30	64

Continued on next page...

Continued from previous page...

Mol	Chain	Analysed	Rotameric	Outliers	Percentiles	
4	R	194/215 (90%)	186 (96%)	8 (4%)	30	64
5	E	190/193 (98%)	183 (96%)	7 (4%)	34	68
5	S	190/193 (98%)	183 (96%)	7 (4%)	34	68
6	F	201/239 (84%)	193 (96%)	8 (4%)	31	65
6	T	201/239 (84%)	193 (96%)	8 (4%)	31	65
7	G	206/210 (98%)	200 (97%)	6 (3%)	42	76
7	U	206/210 (98%)	200 (97%)	6 (3%)	42	76
8	H	181/190 (95%)	177 (98%)	4 (2%)	52	83
8	V	181/190 (95%)	178 (98%)	3 (2%)	60	87
9	I	172/173 (99%)	169 (98%)	3 (2%)	60	87
9	W	172/173 (99%)	169 (98%)	3 (2%)	60	87
10	J	173/175 (99%)	168 (97%)	5 (3%)	42	76
10	X	173/175 (99%)	168 (97%)	5 (3%)	42	76
11	K	169/169 (100%)	164 (97%)	5 (3%)	41	75
11	Y	169/169 (100%)	164 (97%)	5 (3%)	41	75
12	L	185/185 (100%)	180 (97%)	5 (3%)	44	78
12	Z	185/185 (100%)	180 (97%)	5 (3%)	44	78
13	M	199/208 (96%)	193 (97%)	6 (3%)	41	75
13	a	199/208 (96%)	193 (97%)	6 (3%)	41	75
14	N	169/169 (100%)	167 (99%)	2 (1%)	71	92
14	b	169/169 (100%)	168 (99%)	1 (1%)	86	96
All	All	5326/5554 (96%)	5180 (97%)	146 (3%)	44	78

All (146) residues with a non-rotameric sidechain are listed below:

Mol	Chain	Res	Type
1	A	17	LYS
1	A	61	LEU
1	A	157	PHE
2	B	50	LYS
2	B	55	LEU
2	B	58	GLN
2	B	114	LEU
2	B	184	LYS
2	B	191	LEU

Continued on next page...

Continued from previous page...

Mol	Chain	Res	Type
3	C	4	ARG
3	C	38	ASN
3	C	147	GLN
3	C	160	GLN
3	C	169	VAL
3	C	180	LYS
4	D	99	ILE
4	D	125	LEU
4	D	176	LEU
4	D	193	LEU
4	D	214	ILE
4	D	224	ASP
4	D	236	LYS
4	D	242	GLU
5	E	9	THR
5	E	29	LYS
5	E	54	GLU
5	E	71	LEU
5	E	184	ASN
5	E	188	LEU
5	E	202	ASP
6	F	14	ASP
6	F	123	ASN
6	F	172	LEU
6	F	181	GLU
6	F	203	ASN
6	F	206	LYS
6	F	214	TRP
6	F	221	ASN
7	G	115	LEU
7	G	125	MET
7	G	166	GLN
7	G	181	LYS
7	G	235	ARG
7	G	236	LEU
8	H	22	GLN
8	H	30	ASN
8	H	56	THR
8	H	196	ARG
9	I	37	ASN
9	I	171	LEU
9	I	182	TRP

Continued on next page...

Continued from previous page...

Mol	Chain	Res	Type
10	J	23	ARG
10	J	75	LEU
10	J	78	GLN
10	J	144	LEU
10	J	174	MET
11	K	4	LEU
11	K	9	GLN
11	K	35	ILE
11	K	73	ARG
11	K	106	ARG
12	L	1	GLN
12	L	23	LEU
12	L	49	ASN
12	L	136	CYS
12	L	167	LYS
13	M	43	ILE
13	M	48	ASN
13	M	70	LEU
13	M	104	ARG
13	M	161	ARG
13	M	187	ARG
14	N	-8	LEU
14	N	18	SER
1	O	17	LYS
1	O	61	LEU
1	O	157	PHE
2	P	50	LYS
2	P	55	LEU
2	P	58	GLN
2	P	114	LEU
2	P	184	LYS
2	P	191	LEU
3	Q	4	ARG
3	Q	38	ASN
3	Q	147	GLN
3	Q	160	GLN
3	Q	169	VAL
3	Q	180	LYS
4	R	99	ILE
4	R	125	LEU
4	R	176	LEU
4	R	193	LEU

Continued on next page...

Continued from previous page...

Mol	Chain	Res	Type
4	R	214	ILE
4	R	224	ASP
4	R	236	LYS
4	R	242	GLU
5	S	9	THR
5	S	29	LYS
5	S	54	GLU
5	S	71	LEU
5	S	184	ASN
5	S	188	LEU
5	S	202	ASP
6	T	14	ASP
6	T	123	ASN
6	T	172	LEU
6	T	181	GLU
6	T	203	ASN
6	T	206	LYS
6	T	214	TRP
6	T	221	ASN
7	U	115	LEU
7	U	125	MET
7	U	166	GLN
7	U	181	LYS
7	U	235	ARG
7	U	236	LEU
8	V	30	ASN
8	V	56	THR
8	V	196	ARG
9	W	37	ASN
9	W	171	LEU
9	W	182	TRP
10	X	23	ARG
10	X	75	LEU
10	X	78	GLN
10	X	144	LEU
10	X	174	MET
11	Y	4	LEU
11	Y	9	GLN
11	Y	35	ILE
11	Y	73	ARG
11	Y	106	ARG
12	Z	1	GLN

Continued on next page...

Continued from previous page...

Mol	Chain	Res	Type
12	Z	23	LEU
12	Z	49	ASN
12	Z	136	CYS
12	Z	167	LYS
13	a	43	ILE
13	a	48	ASN
13	a	70	LEU
13	a	104	ARG
13	a	161	ARG
13	a	187	ARG
14	b	-8	LEU

Sometimes sidechains can be flipped to improve hydrogen bonding and reduce clashes. All (67) such sidechains are listed below:

Mol	Chain	Res	Type
1	A	94	HIS
2	B	119	GLN
2	B	123	GLN
2	B	155	ASN
3	C	38	ASN
3	C	147	GLN
3	C	160	GLN
4	D	146	GLN
4	D	225	ASN
5	E	68	HIS
5	E	92	ASN
5	E	99	ASN
5	E	116	GLN
5	E	118	ASN
5	E	120	GLN
5	E	184	ASN
6	F	86	ASN
6	F	117	GLN
6	F	123	ASN
6	F	191	GLN
6	F	240	GLN
7	G	83	ASN
7	G	117	GLN
7	G	121	GLN
8	H	66	HIS
10	J	55	GLN
11	K	85	ASN

Continued on next page...

Continued from previous page...

Mol	Chain	Res	Type
11	K	176	ASN
12	L	3	ASN
12	L	70	ASN
13	M	48	ASN
13	M	102	GLN
13	M	194	ASN
13	M	213	GLN
1	O	94	HIS
2	P	119	GLN
2	P	123	GLN
3	Q	38	ASN
3	Q	147	GLN
3	Q	160	GLN
4	R	91	HIS
4	R	146	GLN
5	S	68	HIS
5	S	92	ASN
5	S	99	ASN
5	S	116	GLN
5	S	118	ASN
5	S	120	GLN
5	S	184	ASN
6	T	86	ASN
6	T	117	GLN
6	T	123	ASN
6	T	191	GLN
6	T	240	GLN
7	U	83	ASN
7	U	117	GLN
7	U	121	GLN
10	X	55	GLN
11	Y	85	ASN
11	Y	176	ASN
12	Z	70	ASN
12	Z	158	ASN
13	a	48	ASN
13	a	102	GLN
13	a	179	ASN
13	a	194	ASN
13	a	213	GLN

5.3.3 RNA [i](#)

There are no RNA molecules in this entry.

5.4 Non-standard residues in protein, DNA, RNA chains [i](#)

There are no non-standard protein/DNA/RNA residues in this entry.

5.5 Carbohydrates [i](#)

There are no monosaccharides in this entry.

5.6 Ligand geometry [i](#)

Of 20 ligands modelled in this entry, 12 are monoatomic - leaving 8 for Mogul analysis.

In the following table, the Counts columns list the number of bonds (or angles) for which Mogul statistics could be retrieved, the number of bonds (or angles) that are observed in the model and the number of bonds (or angles) that are defined in the Chemical Component Dictionary. The Link column lists molecule types, if any, to which the group is linked. The Z score for a bond length (or angle) is the number of standard deviations the observed value is removed from the expected value. A bond length (or angle) with $|Z| > 2$ is considered an outlier worth inspection. RMSZ is the root-mean-square of all Z scores of the bond lengths (or angles).

Mol	Type	Chain	Res	Link	Bond lengths			Bond angles		
					Counts	RMSZ	# Z > 2	Counts	RMSZ	# Z > 2
17	3BV	K	301	11	54,54,54	1.51	5 (9%)	68,71,71	1.60	7 (10%)
17	3BV	H	301	8	54,54,54	1.34	3 (5%)	68,71,71	1.45	6 (8%)
18	MES	K	303	-	12,12,12	2.21	1 (8%)	14,16,16	1.46	2 (14%)
18	MES	Y	302	-	12,12,12	2.33	1 (8%)	14,16,16	1.25	2 (14%)
17	3BV	Y	301	11	54,54,54	1.35	3 (5%)	68,71,71	1.65	6 (8%)
18	MES	V	302	-	12,12,12	2.14	1 (8%)	14,16,16	1.44	3 (21%)
17	3BV	V	301	8	54,54,54	1.38	5 (9%)	68,71,71	1.60	7 (10%)
18	MES	H	302	-	12,12,12	2.12	1 (8%)	14,16,16	1.39	3 (21%)

In the following table, the Chirals column lists the number of chiral outliers, the number of chiral centers analysed, the number of these observed in the model and the number defined in the Chemical Component Dictionary. Similar counts are reported in the Torsion and Rings columns. '-' means no outliers of that kind were identified.

Mol	Type	Chain	Res	Link	Chirals	Torsions	Rings
17	3BV	K	301	11	-	13/59/67/67	0/3/3/3
17	3BV	H	301	8	-	14/59/67/67	0/3/3/3
18	MES	K	303	-	-	0/6/14/14	0/1/1/1
18	MES	Y	302	-	-	0/6/14/14	0/1/1/1
17	3BV	Y	301	11	-	12/59/67/67	0/3/3/3
18	MES	V	302	-	-	2/6/14/14	0/1/1/1
17	3BV	V	301	8	-	12/59/67/67	0/3/3/3
18	MES	H	302	-	-	5/6/14/14	0/1/1/1

All (20) bond length outliers are listed below:

Mol	Chain	Res	Type	Atoms	Z	Observed(Å)	Ideal(Å)
18	Y	302	MES	C8-S	-7.76	1.66	1.77
18	K	303	MES	C8-S	-7.30	1.67	1.77
18	V	302	MES	C8-S	-7.09	1.67	1.77
18	H	302	MES	C8-S	-7.00	1.67	1.77
17	K	301	3BV	C32-C33	-6.69	1.35	1.51
17	H	301	3BV	C32-C33	-6.19	1.36	1.51
17	V	301	3BV	C32-C33	-5.89	1.37	1.51
17	Y	301	3BV	C32-C33	-5.89	1.37	1.51
17	Y	301	3BV	C13-C14	-4.54	1.38	1.51
17	V	301	3BV	C13-C14	-4.22	1.39	1.51
17	K	301	3BV	C13-C14	-4.17	1.39	1.51
17	H	301	3BV	C13-C14	-4.10	1.39	1.51
17	K	301	3BV	O48-C47	-3.86	1.33	1.43
17	V	301	3BV	O48-C47	-3.80	1.34	1.43
17	Y	301	3BV	O48-C47	-3.53	1.34	1.43
17	K	301	3BV	C59-C51	-3.19	1.49	1.52
17	V	301	3BV	C59-C51	-2.28	1.50	1.52
17	H	301	3BV	C51-C47	2.09	1.57	1.53
17	V	301	3BV	C11-C20	-2.04	1.47	1.52
17	K	301	3BV	C7-C8	-2.01	1.49	1.52

All (36) bond angle outliers are listed below:

Mol	Chain	Res	Type	Atoms	Z	Observed(°)	Ideal(°)
17	Y	301	3BV	C43-C42-N41	-9.28	98.18	110.18
17	V	301	3BV	C43-C42-N41	-9.10	98.41	110.18
17	H	301	3BV	C43-C42-N41	-7.45	100.54	110.18
17	K	301	3BV	C43-C42-N41	-7.16	100.92	110.18
17	Y	301	3BV	C7-N4-C5	4.93	118.73	111.09
17	K	301	3BV	C7-N4-C5	4.77	118.49	111.09

Continued on next page...

Continued from previous page...

Mol	Chain	Res	Type	Atoms	Z	Observed(°)	Ideal(°)
17	K	301	3BV	C58-C51-C59	-4.44	104.05	109.88
17	H	301	3BV	C7-N4-C3	3.96	117.23	111.09
18	V	302	MES	O1S-S-C8	3.67	111.34	106.92
17	Y	301	3BV	C58-C51-C59	-3.52	105.25	109.88
18	H	302	MES	O2S-S-C8	3.39	111.00	106.92
17	V	301	3BV	C25-C24-C23	-3.22	106.56	115.43
17	V	301	3BV	C58-C51-C59	-3.06	105.85	109.88
17	V	301	3BV	C20-C11-N10	-3.06	102.83	111.16
17	K	301	3BV	C7-N4-C3	2.95	115.66	111.09
17	K	301	3BV	C12-C11-C20	2.92	117.02	110.20
17	V	301	3BV	C3-N4-C5	2.89	115.33	108.83
18	Y	302	MES	O3S-S-C8	2.84	110.36	105.77
17	H	301	3BV	C58-C51-C59	-2.82	106.17	109.88
18	K	303	MES	O3S-S-C8	2.67	110.08	105.77
17	H	301	3BV	C12-C11-N10	-2.64	105.53	110.88
17	K	301	3BV	C33-C32-C31	-2.49	106.51	113.39
18	Y	302	MES	O2S-S-C8	2.47	109.89	106.92
17	H	301	3BV	C25-C24-C23	-2.43	108.74	115.43
17	V	301	3BV	O60-C59-C51	-2.39	106.44	111.33
17	Y	301	3BV	C33-C32-C31	-2.38	106.82	113.39
18	H	302	MES	O1S-S-C8	2.34	109.73	106.92
17	K	301	3BV	C24-C23-C28	-2.26	105.20	110.57
18	V	302	MES	O2S-S-C8	2.23	109.60	106.92
18	K	303	MES	O2S-S-C8	2.20	109.56	106.92
17	H	301	3BV	C3-N4-C5	2.12	113.60	108.83
17	V	301	3BV	O48-C47-C42	-2.11	103.94	108.98
18	V	302	MES	O3S-S-C8	2.10	109.16	105.77
17	Y	301	3BV	O48-C47-C42	-2.04	104.10	108.98
17	Y	301	3BV	C25-C24-C23	-2.02	109.87	115.43
18	H	302	MES	O3S-S-C8	2.02	109.04	105.77

There are no chirality outliers.

All (58) torsion outliers are listed below:

Mol	Chain	Res	Type	Atoms
17	H	301	3BV	C8-C7-N4-C3
17	H	301	3BV	C47-C42-C43-C44
17	H	301	3BV	C42-C47-C51-C58
17	H	301	3BV	C42-C47-C51-C59
17	K	301	3BV	C8-C7-N4-C5
17	K	301	3BV	N41-C42-C43-C44
17	K	301	3BV	N41-C42-C47-O48

Continued on next page...

Continued from previous page...

Mol	Chain	Res	Type	Atoms
17	V	301	3BV	C8-C7-N4-C3
17	V	301	3BV	N10-C11-C12-C13
17	V	301	3BV	C47-C42-C43-C44
17	Y	301	3BV	C8-C7-N4-C5
17	Y	301	3BV	C47-C42-C43-C44
17	Y	301	3BV	O48-C47-C51-C58
18	H	302	MES	C7-C8-S-O1S
18	H	302	MES	C7-C8-S-O3S
17	H	301	3BV	N10-C11-C12-C13
17	H	301	3BV	C20-C11-C12-C13
17	V	301	3BV	C42-C43-C44-C46
17	H	301	3BV	O48-C47-C51-C58
17	H	301	3BV	O48-C47-C51-C59
17	K	301	3BV	O48-C47-C51-C58
17	Y	301	3BV	C8-C7-N4-C3
18	H	302	MES	C8-C7-N4-C3
17	H	301	3BV	N41-C42-C43-C44
17	V	301	3BV	N41-C42-C43-C44
17	Y	301	3BV	N41-C42-C43-C44
17	V	301	3BV	C42-C43-C44-C45
17	Y	301	3BV	C11-C12-C13-C14
17	H	301	3BV	C47-C51-C59-O60
17	K	301	3BV	C47-C51-C59-O60
18	H	302	MES	C7-C8-S-O2S
17	K	301	3BV	N41-C42-C47-C51
17	K	301	3BV	C47-C42-C43-C44
17	V	301	3BV	C20-C11-C12-C13
17	H	301	3BV	C12-C13-C14-C19
18	H	302	MES	C8-C7-N4-C5
18	V	302	MES	C8-C7-N4-C5
17	H	301	3BV	C12-C13-C14-C15
17	Y	301	3BV	N10-C11-C20-O21
17	K	301	3BV	N10-C11-C20-O21
17	V	301	3BV	N30-C31-C39-O40
17	V	301	3BV	O48-C47-C51-C58
17	Y	301	3BV	N30-C31-C39-O40
17	H	301	3BV	C42-C43-C44-C46
17	Y	301	3BV	C42-C43-C44-C46
17	H	301	3BV	N30-C31-C39-O40
17	V	301	3BV	C12-C13-C14-C19
17	V	301	3BV	C12-C13-C14-C15
17	V	301	3BV	N30-C31-C39-N41

Continued on next page...

Continued from previous page...

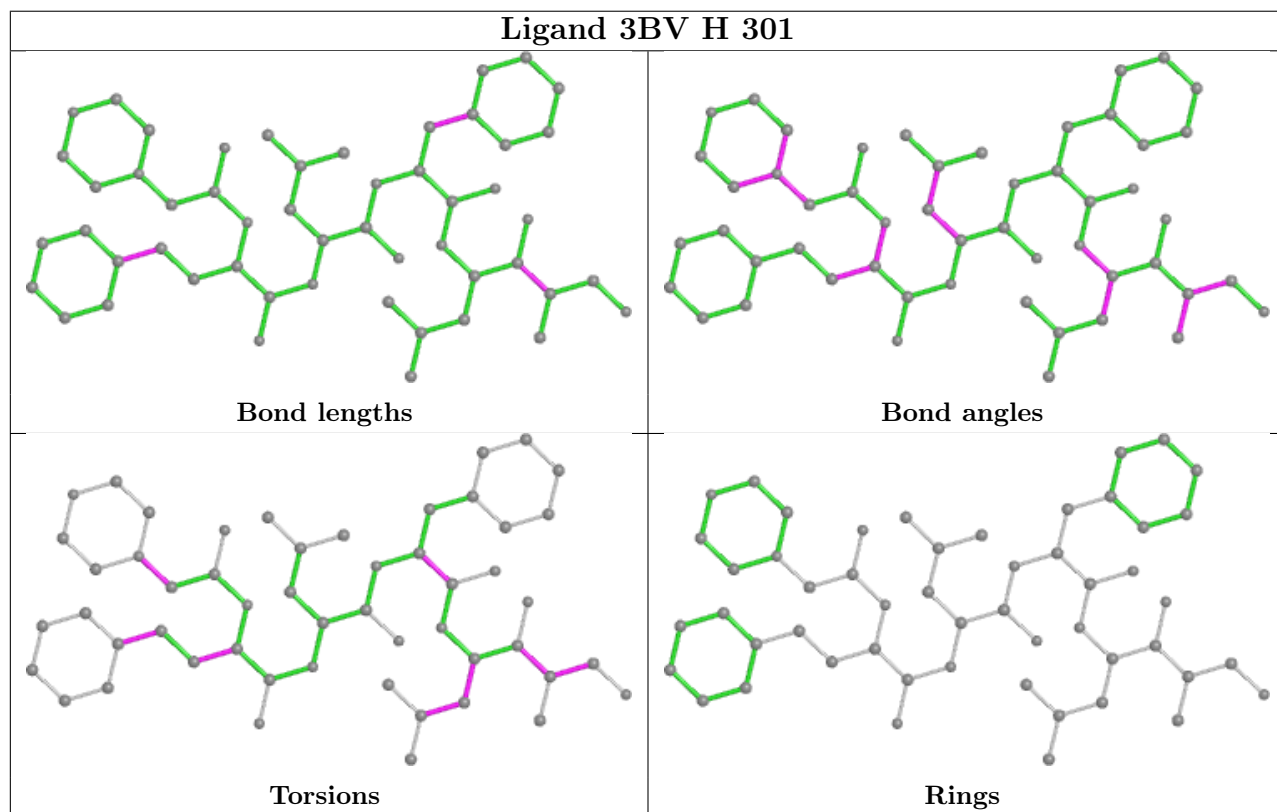
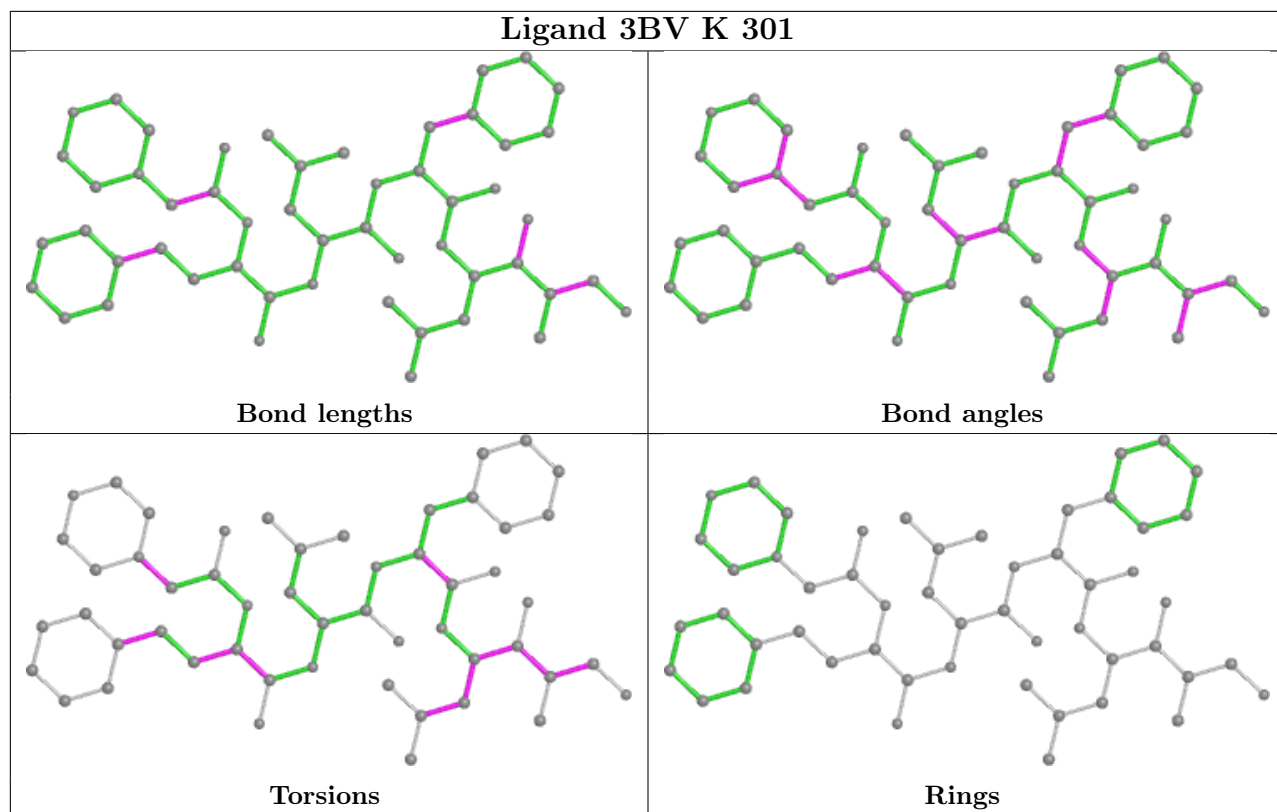
Mol	Chain	Res	Type	Atoms
17	K	301	3BV	C12-C13-C14-C19
17	Y	301	3BV	N41-C42-C47-O48
17	K	301	3BV	C20-C11-C12-C13
17	K	301	3BV	N30-C31-C39-O40
17	K	301	3BV	C42-C43-C44-C46
17	K	301	3BV	C12-C13-C14-C15
17	Y	301	3BV	N41-C42-C47-C51
18	V	302	MES	C8-C7-N4-C3
17	Y	301	3BV	N30-C31-C39-N41

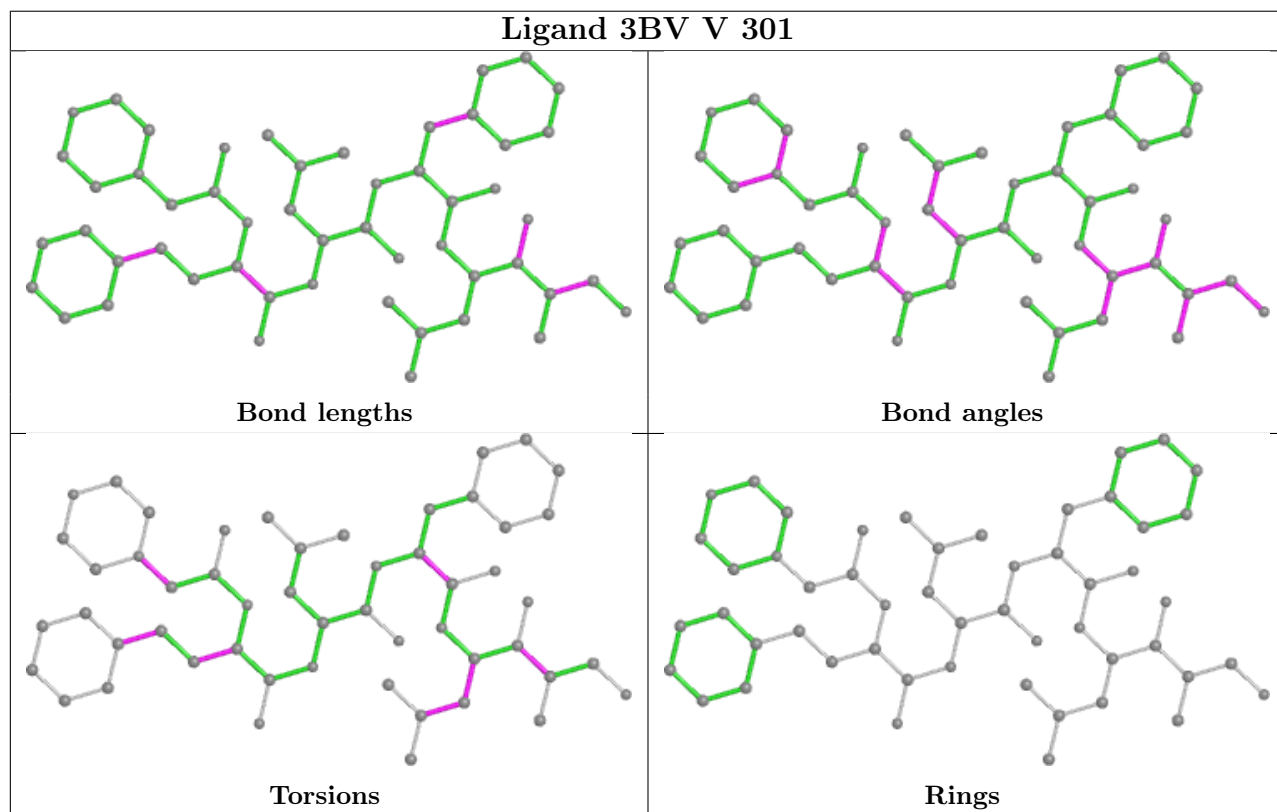
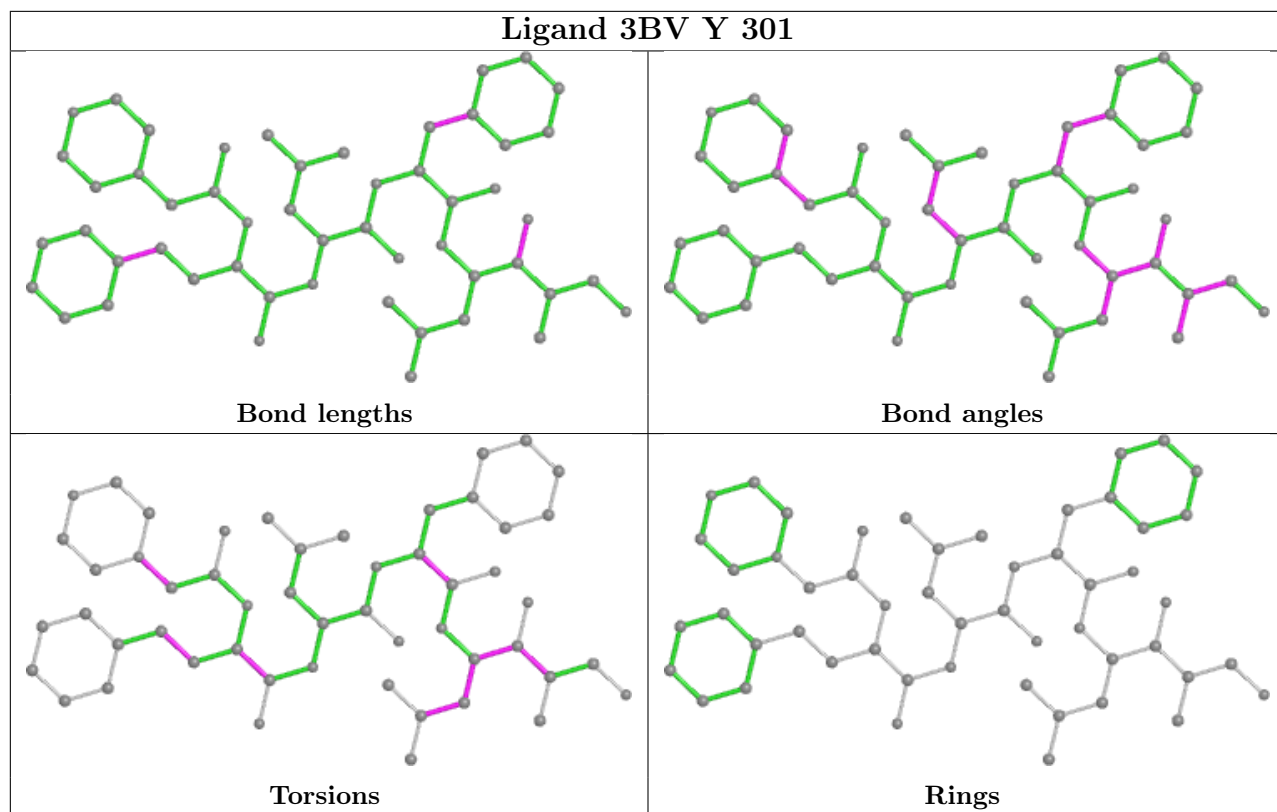
There are no ring outliers.

5 monomers are involved in 19 short contacts:

Mol	Chain	Res	Type	Clashes	Symm-Clashes
17	K	301	3BV	9	0
17	H	301	3BV	5	0
17	Y	301	3BV	2	0
17	V	301	3BV	3	0
18	H	302	MES	2	0

The following is a two-dimensional graphical depiction of Mogul quality analysis of bond lengths, bond angles, torsion angles, and ring geometry for all instances of the Ligand of Interest. In addition, ligands with molecular weight > 250 and outliers as shown on the validation Tables will also be included. For torsion angles, if less than 5% of the Mogul distribution of torsion angles is within 10 degrees of the torsion angle in question, then that torsion angle is considered an outlier. Any bond that is central to one or more torsion angles identified as an outlier by Mogul will be highlighted in the graph. For rings, the root-mean-square deviation (RMSD) between the ring in question and similar rings identified by Mogul is calculated over all ring torsion angles. If the average RMSD is greater than 60 degrees and the minimal RMSD between the ring in question and any Mogul-identified rings is also greater than 60 degrees, then that ring is considered an outlier. The outliers are highlighted in purple. The color gray indicates Mogul did not find sufficient equivalents in the CSD to analyse the geometry.





5.7 Other polymers [i](#)

There are no such residues in this entry.

5.8 Polymer linkage issues [i](#)

There are no chain breaks in this entry.

6 Fit of model and data i

6.1 Protein, DNA and RNA chains i

In the following table, the column labelled ‘#RSRZ> 2’ contains the number (and percentage) of RSRZ outliers, followed by percent RSRZ outliers for the chain as percentile scores relative to all X-ray entries and entries of similar resolution. The OWAB column contains the minimum, median, 95th percentile and maximum values of the occupancy-weighted average B-factor per residue. The column labelled ‘Q< 0.9’ lists the number of (and percentage) of residues with an average occupancy less than 0.9.

Mol	Chain	Analysed	<RSRZ>	#RSRZ>2	OWAB(Å ²)	Q<0.9
1	A	250/250 (100%)	-0.35	5 (2%) 65 56	40, 55, 92, 147	0
1	O	250/250 (100%)	-0.23	8 (3%) 47 37	44, 64, 108, 153	0
2	B	244/258 (94%)	-0.23	11 (4%) 33 23	40, 60, 109, 160	0
2	P	244/258 (94%)	-0.16	11 (4%) 33 23	43, 67, 113, 162	0
3	C	240/254 (94%)	-0.15	12 (5%) 28 19	41, 67, 133, 169	0
3	Q	240/254 (94%)	0.06	15 (6%) 20 12	51, 82, 164, 194	0
4	D	235/260 (90%)	-0.34	2 (0%) 84 80	49, 70, 100, 142	0
4	R	235/260 (90%)	-0.22	5 (2%) 63 54	50, 71, 113, 157	0
5	E	231/234 (98%)	-0.17	4 (1%) 70 63	49, 72, 109, 150	0
5	S	231/234 (98%)	-0.11	6 (2%) 56 46	52, 77, 122, 155	0
6	F	243/288 (84%)	-0.39	4 (1%) 72 66	44, 65, 116, 144	0
6	T	243/288 (84%)	-0.27	6 (2%) 57 47	41, 70, 126, 168	0
7	G	241/252 (95%)	-0.40	3 (1%) 79 73	38, 59, 104, 157	0
7	U	241/252 (95%)	-0.43	2 (0%) 86 81	36, 59, 95, 140	0
8	H	222/232 (95%)	-0.50	2 (0%) 84 80	39, 54, 88, 114	0
8	V	222/232 (95%)	-0.38	3 (1%) 75 70	40, 57, 93, 126	0
9	I	204/205 (99%)	-0.68	1 (0%) 91 88	34, 50, 81, 104	0
9	W	204/205 (99%)	-0.62	2 (0%) 82 77	35, 53, 81, 111	0
10	J	195/198 (98%)	-0.54	2 (1%) 82 77	36, 53, 84, 124	0
10	X	195/198 (98%)	-0.43	2 (1%) 82 77	38, 57, 88, 132	0
11	K	212/212 (100%)	-0.54	1 (0%) 91 88	38, 54, 85, 108	0
11	Y	212/212 (100%)	-0.59	2 (0%) 84 80	39, 54, 85, 112	0
12	L	222/222 (100%)	-0.58	1 (0%) 91 88	37, 58, 88, 111	0
12	Z	222/222 (100%)	-0.59	1 (0%) 91 88	37, 54, 86, 105	0

Continued on next page...

Continued from previous page...

Mol	Chain	Analysed	<RSRZ>	#RSRZ>2	OWAB(Å ²)	Q<0.9
13	M	233/246 (94%)	-0.56	2 (0%) 84 80	35, 56, 81, 92	0
13	a	233/246 (94%)	-0.53	1 (0%) 92 91	35, 53, 79, 87	0
14	N	206/206 (100%)	-0.22	5 (2%) 59 49	38, 58, 93, 134	0
14	b	206/206 (100%)	-0.46	3 (1%) 73 68	39, 54, 84, 114	0
All	All	6356/6634 (95%)	-0.37	122 (1%) 66 59	34, 60, 108, 194	0

All (122) RSRZ outliers are listed below:

Mol	Chain	Res	Type	RSRZ
1	A	1	MET	7.9
3	Q	49	THR	7.4
2	B	220	ASN	6.3
3	C	206	LYS	5.6
10	J	1	MET	5.4
1	O	1	MET	5.3
2	P	220	ASN	5.1
3	Q	48	SER	5.1
3	C	49	THR	5.0
2	B	218	GLY	5.0
2	P	218	GLY	4.8
3	Q	206	LYS	4.8
3	Q	50	LEU	4.7
13	a	1	THR	4.7
14	b	195	GLN	4.2
3	Q	238	LYS	4.1
3	C	50	LEU	4.1
5	E	202	ASP	4.0
2	P	219	ALA	4.0
4	R	125	LEU	3.9
8	H	221	CYS	3.9
9	W	1	SER	3.9
13	M	1	THR	3.9
2	B	219	ALA	3.9
10	X	1	MET	3.9
3	Q	51	LYS	3.8
8	V	222	ASP	3.7
2	P	59	ASP	3.7
3	C	239	GLN	3.7
2	P	51	VAL	3.7
3	C	225	GLU	3.6
3	C	205	ALA	3.6

Continued on next page...

Continued from previous page...

Mol	Chain	Res	Type	RSRZ
3	C	202	GLN	3.6
6	T	205	GLU	3.5
3	Q	205	ALA	3.4
3	C	238	LYS	3.4
5	S	202	ASP	3.4
10	J	194	ASP	3.3
4	D	241	ALA	3.2
7	U	242	GLN	3.2
6	T	241	LYS	3.2
2	P	203	SER	3.2
3	C	236	GLN	3.2
9	I	1	SER	3.1
2	B	221	ASP	3.0
14	b	-9	ARG	3.0
1	O	52	SER	3.0
3	Q	236	GLN	2.9
3	Q	239	GLN	2.9
7	G	179	LYS	2.9
1	A	250	LEU	2.9
4	R	241	ALA	2.9
6	T	244	ASN	2.9
4	D	242	GLU	2.9
3	C	240	GLU	2.8
1	O	2	THR	2.8
2	P	60	THR	2.8
6	T	243	ILE	2.8
11	Y	212	GLY	2.8
5	S	180	LYS	2.8
14	N	195	GLN	2.8
10	X	194	ASP	2.8
3	Q	204	GLY	2.8
7	G	2	GLY	2.8
6	F	202	ASP	2.8
1	A	249	ALA	2.8
5	E	207	VAL	2.7
2	P	221	ASP	2.7
3	Q	223	SER	2.7
8	V	221	CYS	2.7
3	C	180	LYS	2.6
4	R	217	GLN	2.6
2	B	235	LYS	2.6
5	E	54	GLU	2.5

Continued on next page...

Continued from previous page...

Mol	Chain	Res	Type	RSRZ
6	F	201	GLU	2.5
8	H	222	ASP	2.5
11	K	212	GLY	2.5
2	B	203	SER	2.5
13	M	216	ASN	2.5
3	Q	225	GLU	2.5
12	L	210	ASP	2.5
2	B	51	VAL	2.5
2	P	186	ASP	2.5
3	Q	141	ASP	2.4
3	Q	180	LYS	2.4
3	Q	240	GLU	2.4
11	Y	106	ARG	2.4
2	B	60	THR	2.4
5	S	204	SER	2.4
14	N	-9	ARG	2.3
2	B	244	THR	2.3
6	T	53	LYS	2.3
5	S	207	VAL	2.2
12	Z	210	ASP	2.2
14	N	105	LYS	2.2
4	R	242	GLU	2.2
6	T	2	THR	2.2
9	W	191	LYS	2.2
7	U	222	ASP	2.2
8	V	9	ASN	2.2
5	S	203	GLU	2.2
1	O	249	ALA	2.2
6	F	53	LYS	2.2
1	A	248	GLU	2.2
1	O	201	GLU	2.2
1	O	248	GLU	2.2
2	B	240	LYS	2.2
14	b	105	LYS	2.2
14	N	9	LYS	2.1
14	N	106	ASN	2.1
3	C	232	THR	2.1
7	G	3	TYR	2.1
5	E	123	GLY	2.1
1	O	231	LYS	2.1
1	O	50	LYS	2.1
6	F	181	GLU	2.1

Continued on next page...

Continued from previous page...

Mol	Chain	Res	Type	RSRZ
2	P	182	ASP	2.1
2	B	182	ASP	2.0
5	S	218	ASP	2.0
1	A	2	THR	2.0
2	P	225	TYR	2.0
4	R	226	GLU	2.0

6.2 Non-standard residues in protein, DNA, RNA chains [i](#)

There are no non-standard protein/DNA/RNA residues in this entry.

6.3 Carbohydrates [i](#)

There are no monosaccharides in this entry.

6.4 Ligands [i](#)

In the following table, the Atoms column lists the number of modelled atoms in the group and the number defined in the chemical component dictionary. The B-factors column lists the minimum, median, 95th percentile and maximum values of B factors of atoms in the group. The column labelled 'Q<0.9' lists the number of atoms with occupancy less than 0.9.

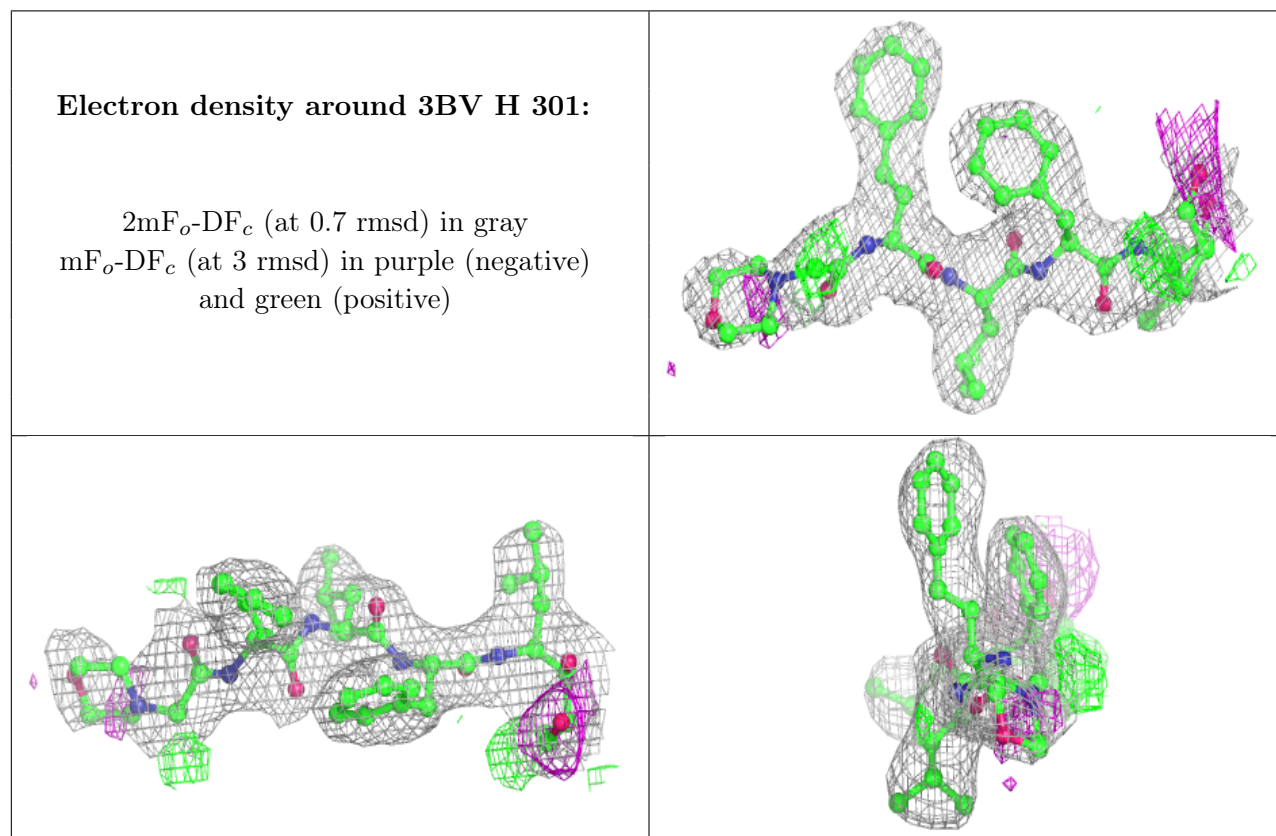
Mol	Type	Chain	Res	Atoms	RSCC	RSR	B-factors(Å ²)	Q<0.9
18	MES	V	302	12/12	0.88	0.36	72,75,97,115	0
17	3BV	H	301	52/52	0.89	0.21	45,54,100,104	0
17	3BV	V	301	52/52	0.92	0.19	48,57,104,109	0
15	MG	N	201	1/1	0.93	0.16	56,56,56,56	0
17	3BV	Y	301	52/52	0.93	0.18	40,48,101,104	0
17	3BV	K	301	52/52	0.93	0.19	41,50,104,107	0
18	MES	H	302	12/12	0.94	0.34	71,74,83,96	0
15	MG	I	301	1/1	0.95	0.10	51,51,51,51	0
15	MG	G	302	1/1	0.95	0.07	30,30,30,30	0
18	MES	Y	302	12/12	0.96	0.26	42,44,56,57	0
15	MG	G	301	1/1	0.97	0.06	58,58,58,58	0
15	MG	Z	301	1/1	0.97	0.14	61,61,61,61	0
16	CL	U	301	1/1	0.97	0.18	44,44,44,44	0
18	MES	K	303	12/12	0.97	0.27	43,47,57,59	0
15	MG	I	302	1/1	0.97	0.05	42,42,42,42	0
15	MG	L	301	1/1	0.97	0.08	64,64,64,64	0
16	CL	N	202	1/1	0.98	0.07	61,61,61,61	0

Continued on next page...

Continued from previous page...

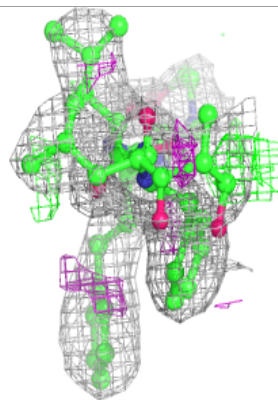
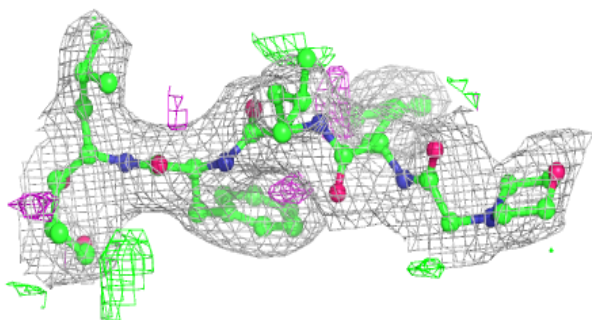
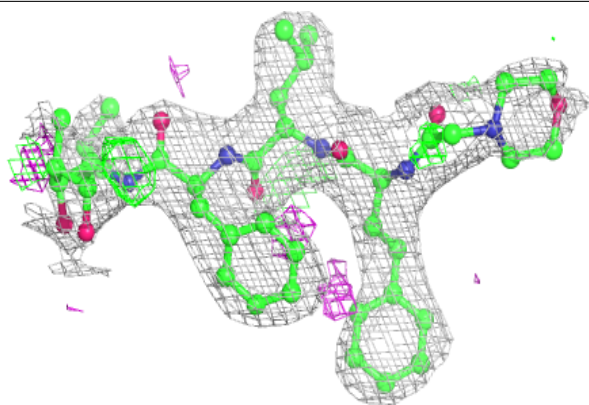
Mol	Type	Chain	Res	Atoms	RSCC	RSR	B-factors(\AA^2)	Q<0.9
15	MG	K	302	1/1	0.98	0.06	52,52,52,52	0
16	CL	G	303	1/1	0.99	0.18	42,42,42,42	0
16	CL	b	201	1/1	0.99	0.07	52,52,52,52	0

The following is a graphical depiction of the model fit to experimental electron density of all instances of the Ligand of Interest. In addition, ligands with molecular weight > 250 and outliers as shown on the geometry validation Tables will also be included. Each fit is shown from different orientation to approximate a three-dimensional view.

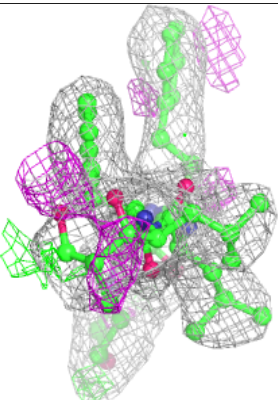
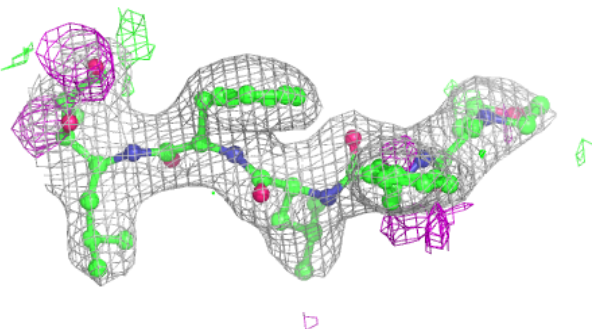
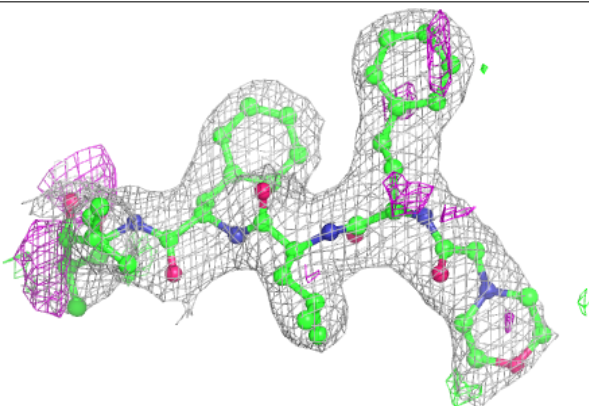


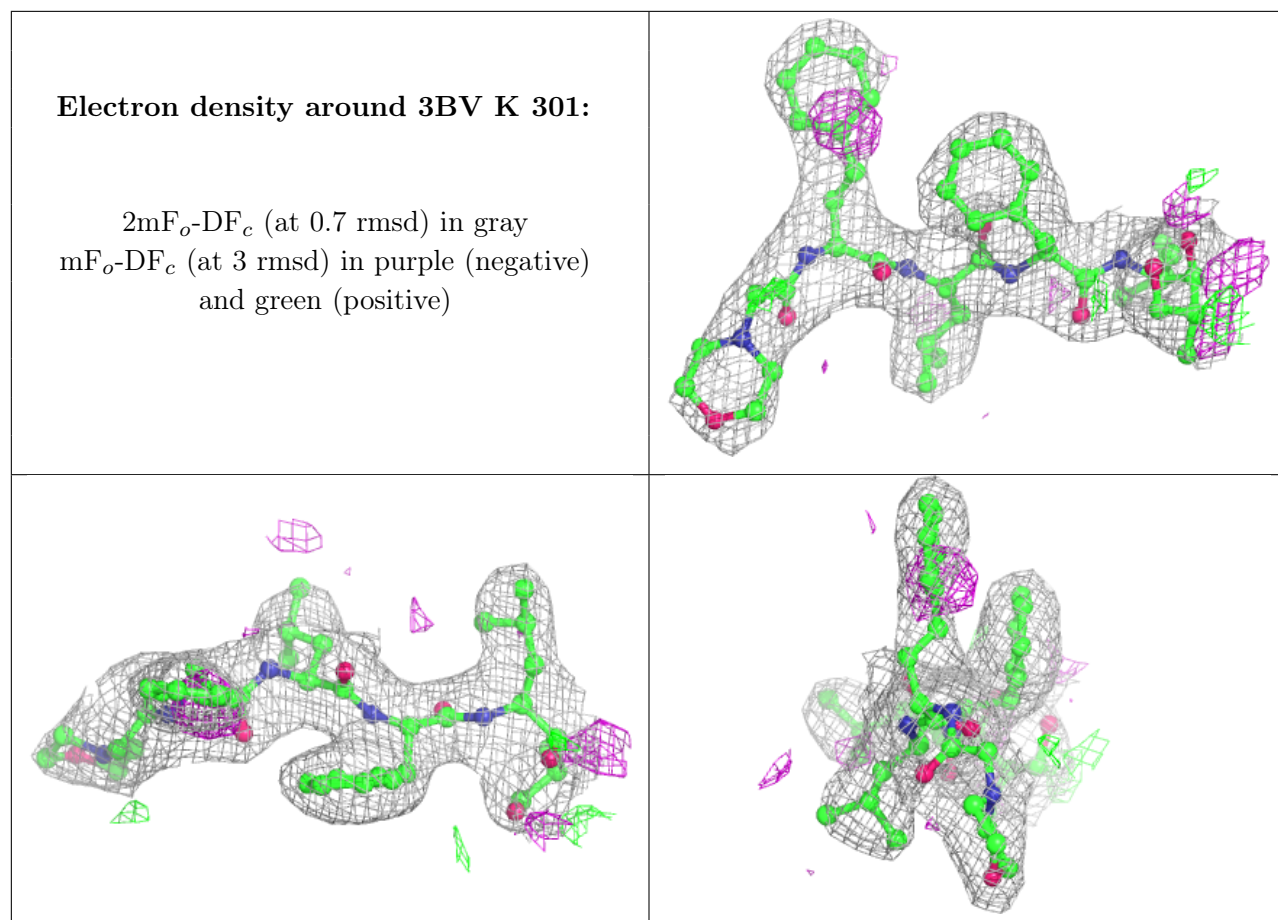
Electron density around 3BV V 301:

$2mF_o-DF_c$ (at 0.7 rmsd) in gray
 mF_o-DF_c (at 3 rmsd) in purple (negative)
and green (positive)

**Electron density around 3BV Y 301:**

$2mF_o-DF_c$ (at 0.7 rmsd) in gray
 mF_o-DF_c (at 3 rmsd) in purple (negative)
and green (positive)





6.5 Other polymers [i](#)

There are no such residues in this entry.