



Full wwPDB X-ray Structure Validation Report ⓘ

Jan 5, 2024 – 01:53 am GMT

PDB ID : 4Z6A
Title : Crystal Structure of a FVIIa-Trypsin Chimera (YT) in Complex with Soluble Tissue Factor
Authors : Sorensen, A.B.; Svensson, L.A.; Gandhi, P.S.
Deposited on : 2015-04-04
Resolution : 2.25 Å(reported)

This is a Full wwPDB X-ray Structure Validation Report for a publicly released PDB entry.

We welcome your comments at validation@mail.wwpdb.org

A user guide is available at

<https://www.wwpdb.org/validation/2017/XrayValidationReportHelp>

with specific help available everywhere you see the ⓘ symbol.

The types of validation reports are described at

<http://www.wwpdb.org/validation/2017/FAQs#types>.

The following versions of software and data (see [references ⓘ](#)) were used in the production of this report:

MolProbity : 4.02b-467
Mogul : 1.8.4, CSD as541be (2020)
Xtriage (Phenix) : 1.13
EDS : 2.36
buster-report : 1.1.7 (2018)
Percentile statistics : 20191225.v01 (using entries in the PDB archive December 25th 2019)
Refmac : 5.8.0158
CCP4 : 7.0.044 (Gargrove)
Ideal geometry (proteins) : Engh & Huber (2001)
Ideal geometry (DNA, RNA) : Parkinson et al. (1996)
Validation Pipeline (wwPDB-VP) : 2.36

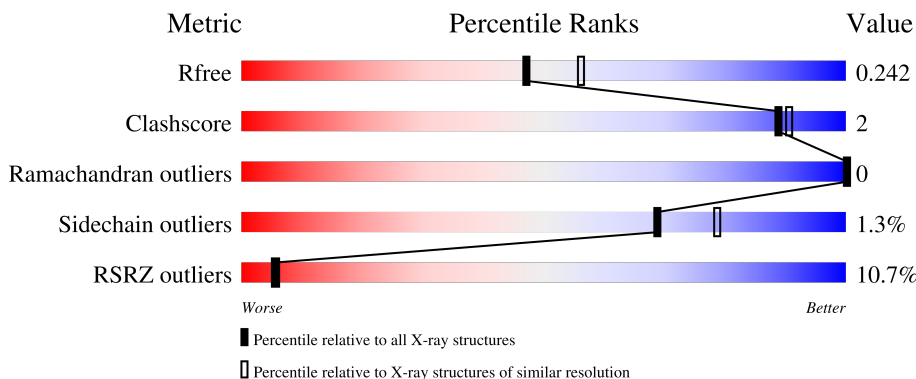
1 Overall quality at a glance

The following experimental techniques were used to determine the structure:

X-RAY DIFFRACTION

The reported resolution of this entry is 2.25 Å.

Percentile scores (ranging between 0-100) for global validation metrics of the entry are shown in the following graphic. The table shows the number of entries on which the scores are based.



Metric	Whole archive (#Entries)	Similar resolution (#Entries, resolution range(Å))
R_{free}	130704	1377 (2.26-2.26)
Clashscore	141614	1487 (2.26-2.26)
Ramachandran outliers	138981	1449 (2.26-2.26)
Sidechain outliers	138945	1450 (2.26-2.26)
RSRZ outliers	127900	1356 (2.26-2.26)

The table below summarises the geometric issues observed across the polymeric chains and their fit to the electron density. The red, orange, yellow and green segments of the lower bar indicate the fraction of residues that contain outliers for ≥ 3 , 2, 1 and 0 types of geometric quality criteria respectively. A grey segment represents the fraction of residues that are not modelled. The numeric value for each fraction is indicated below the corresponding segment, with a dot representing fractions $\leq 5\%$. The upper red bar (where present) indicates the fraction of residues that have poor fit to the electron density. The numeric value is given above the bar.

Mol	Chain	Length	Quality of chain
1	L	96	
2	H	249	
3	T	207	

2 Entry composition

There are 9 unique types of molecules in this entry. The entry contains 8483 atoms, of which 3992 are hydrogens and 0 are deuteriums.

In the tables below, the ZeroOcc column contains the number of atoms modelled with zero occupancy, the AltConf column contains the number of residues with at least one atom in alternate conformation and the Trace column contains the number of residues modelled with at most 2 atoms.

- Molecule 1 is a protein called Coagulation factor VII.

Mol	Chain	Residues	Atoms					ZeroOcc	AltConf	Trace	
			Total	C	H	N	O				S
1	L	94	1238	406	563	117	139	13	0	0	0

- Molecule 2 is a protein called Coagulation factor VII.

Mol	Chain	Residues	Atoms					ZeroOcc	AltConf	Trace	
			Total	C	H	N	O				S
2	H	249	3797	1228	1870	337	349	13	0	4	0

There are 12 discrepancies between the modelled and reference sequences:

Chain	Residue	Modelled	Actual	Comment	Reference
H	?	-	LEU	deletion	UNP P08709
H	?	-	GLN	deletion	UNP P08709
H	?	-	GLN	deletion	UNP P08709
H	?	-	SER	deletion	UNP P08709
H	?	-	ARG	deletion	UNP P08709
H	169	GLU	LYS	engineered mutation	UNP P08709
H	170	ALA	VAL	engineered mutation	UNP P08709
H	171	SER	GLY	engineered mutation	UNP P08709
H	172	TYR	ASP	engineered mutation	UNP P08709
H	173	PRO	SER	engineered mutation	UNP P08709
H	174	GLY	PRO	engineered mutation	UNP P08709
H	175	LYS	ASN	engineered mutation	UNP P08709

- Molecule 3 is a protein called Tissue factor.

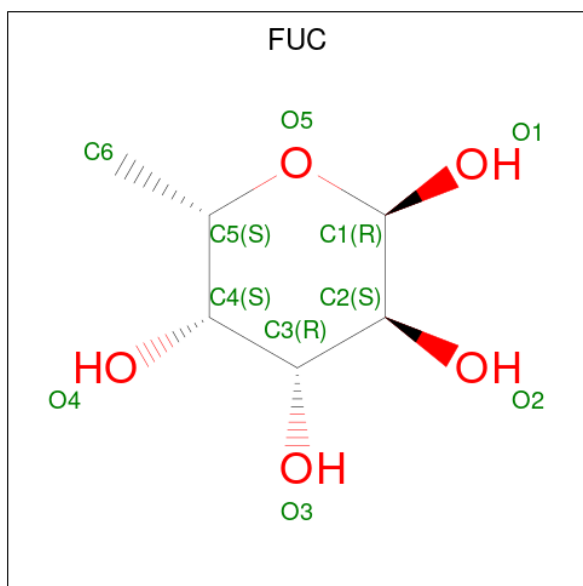
Mol	Chain	Residues	Atoms					ZeroOcc	AltConf	Trace	
			Total	C	H	N	O				S
3	T	201	3087	1011	1497	255	319	5	0	0	0

- Molecule 4 is beta-D-glucopyranose (three-letter code: BGC) (formula: C₆H₁₂O₆).



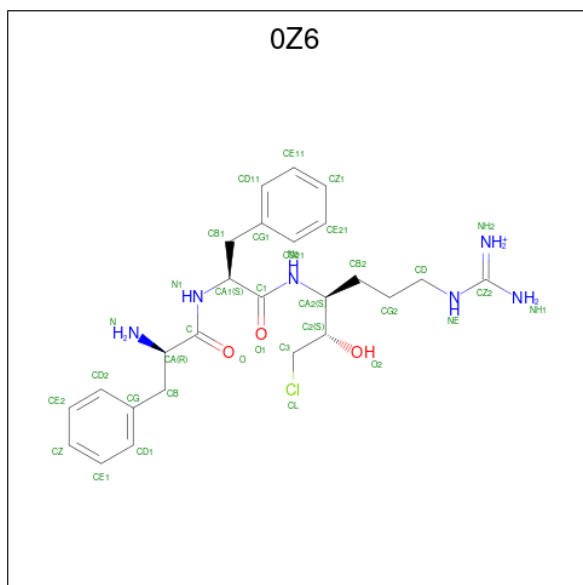
Mol	Chain	Residues	Atoms				ZeroOcc	AltConf
			Total	C	H	O		
4	L	1	22	6	11	5	0	0

- Molecule 5 is alpha-L-fucopyranose (three-letter code: FUC) (formula: $C_6H_{12}O_5$).



Mol	Chain	Residues	Atoms				ZeroOcc	AltConf
			Total	C	H	O		
5	L	1	20	6	10	4	0	0

- Molecule 6 is D-phenylalanyl-N-[(2S,3S)-6-{[amino(iminio)methyl]amino}-1-chloro-2-hydroxyhexan-3-yl]-L-phenylalaninamide (three-letter code: 0Z6) (formula: $C_{25}H_{36}ClN_6O_3$).

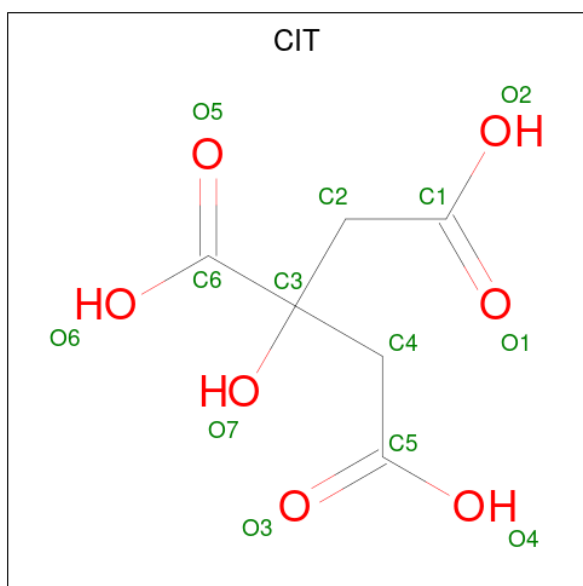


Mol	Chain	Residues	Atoms					ZeroOcc	AltConf
			Total	C	H	N	O		
6	H	1	70	25	36	6	3	0	0

- Molecule 7 is CALCIUM ION (three-letter code: CA) (formula: Ca).

Mol	Chain	Residues	Atoms		ZeroOcc	AltConf
			Total	Ca		
7	H	1	1	1	0	0

- Molecule 8 is CITRIC ACID (three-letter code: CIT) (formula: C₆H₈O₇).



Mol	Chain	Residues	Atoms				ZeroOcc	AltConf
8	T	1	Total	C	H	O	0	0
			18	6	5	7		

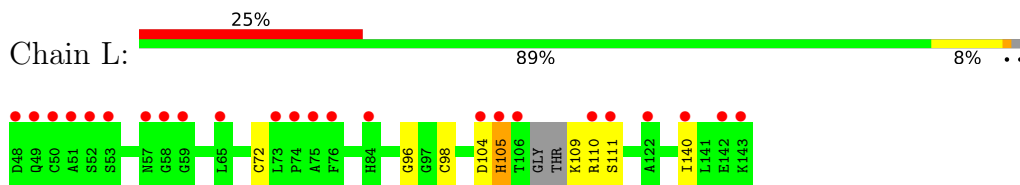
- Molecule 9 is water.

Mol	Chain	Residues	Atoms		ZeroOcc	AltConf
9	L	26	Total	O	0	0
			26	26		
9	H	141	Total	O	0	0
			141	141		
9	T	63	Total	O	0	0
			63	63		

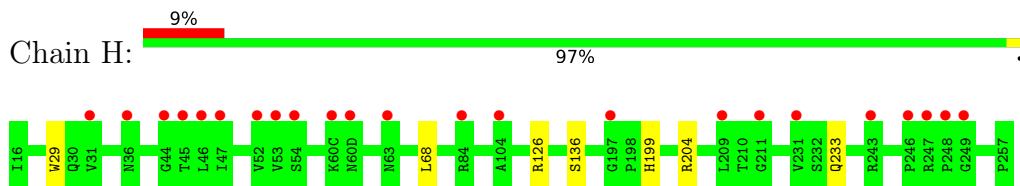
3 Residue-property plots [i](#)

These plots are drawn for all protein, RNA, DNA and oligosaccharide chains in the entry. The first graphic for a chain summarises the proportions of the various outlier classes displayed in the second graphic. The second graphic shows the sequence view annotated by issues in geometry and electron density. Residues are color-coded according to the number of geometric quality criteria for which they contain at least one outlier: green = 0, yellow = 1, orange = 2 and red = 3 or more. A red dot above a residue indicates a poor fit to the electron density ($RSRZ > 2$). Stretches of 2 or more consecutive residues without any outlier are shown as a green connector. Residues present in the sample, but not in the model, are shown in grey.

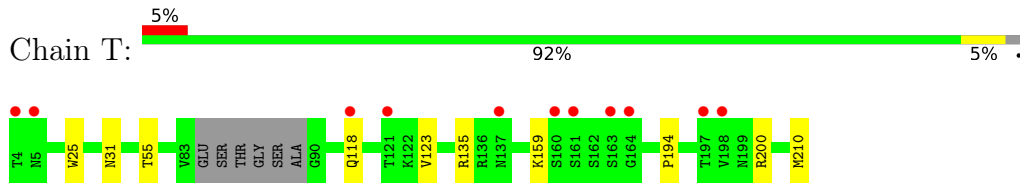
- Molecule 1: Coagulation factor VII



- Molecule 2: Coagulation factor VII



- Molecule 3: Tissue factor



4 Data and refinement statistics

Property	Value	Source
Space group	P 21 21 21	Depositor
Cell constants a, b, c, α , β , γ	67.03Å 81.70Å 124.56Å 90.00° 90.00° 90.00°	Depositor
Resolution (Å)	29.51 – 2.25 29.51 – 2.25	Depositor EDS
% Data completeness (in resolution range)	96.6 (29.51-2.25) 96.6 (29.51-2.25)	Depositor EDS
R_{merge}	0.14	Depositor
R_{sym}	(Not available)	Depositor
$\langle I/\sigma(I) \rangle$ ¹	1.24 (at 2.24Å)	Xtrriage
Refinement program	PHENIX	Depositor
R, R_{free}	0.188 , 0.240 0.190 , 0.242	Depositor DCC
R_{free} test set	1605 reflections (5.01%)	wwPDB-VP
Wilson B-factor (Å ²)	36.9	Xtrriage
Anisotropy	0.269	Xtrriage
Bulk solvent k_{sol} (e/Å ³), B_{sol} (Å ²)	0.39 , 48.7	EDS
L-test for twinning ²	$\langle L \rangle = 0.48$, $\langle L^2 \rangle = 0.32$	Xtrriage
Estimated twinning fraction	No twinning to report.	Xtrriage
F_o, F_c correlation	0.95	EDS
Total number of atoms	8483	wwPDB-VP
Average B, all atoms (Å ²)	48.0	wwPDB-VP

Xtrriage's analysis on translational NCS is as follows: *The largest off-origin peak in the Patterson function is 4.19% of the height of the origin peak. No significant pseudotranslation is detected.*

¹Intensities estimated from amplitudes.

²Theoretical values of $\langle |L| \rangle$, $\langle L^2 \rangle$ for acentric reflections are 0.5, 0.333 respectively for untwinned datasets, and 0.375, 0.2 for perfectly twinned datasets.

5 Model quality [i](#)

5.1 Standard geometry [i](#)

Bond lengths and bond angles in the following residue types are not validated in this section: 0Z6, CIT, FUC, CA, BGC

The Z score for a bond length (or angle) is the number of standard deviations the observed value is removed from the expected value. A bond length (or angle) with $|Z| > 5$ is considered an outlier worth inspection. RMSZ is the root-mean-square of all Z scores of the bond lengths (or angles).

Mol	Chain	Bond lengths		Bond angles	
		RMSZ	# Z >5	RMSZ	# Z >5
1	L	0.26	0/687	0.48	0/931
2	H	0.28	0/1987	0.47	0/2712
3	T	0.28	0/1625	0.45	0/2216
All	All	0.28	0/4299	0.46	0/5859

There are no bond length outliers.

There are no bond angle outliers.

There are no chirality outliers.

There are no planarity outliers.

5.2 Too-close contacts [i](#)

In the following table, the Non-H and H(model) columns list the number of non-hydrogen atoms and hydrogen atoms in the chain respectively. The H(added) column lists the number of hydrogen atoms added and optimized by MolProbity. The Clashes column lists the number of clashes within the asymmetric unit, whereas Symm-Clashes lists symmetry-related clashes.

Mol	Chain	Non-H	H(model)	H(added)	Clashes	Symm-Clashes
1	L	675	563	571	9	0
2	H	1927	1870	1876	4	0
3	T	1590	1497	1503	5	0
4	L	11	11	10	0	0
5	L	10	10	10	0	0
6	H	34	36	31	0	0
7	H	1	0	0	0	0
8	T	13	5	5	0	0
9	H	141	0	0	1	0
9	L	26	0	0	0	0

Continued on next page...

Continued from previous page...

Mol	Chain	Non-H	H(model)	H(added)	Clashes	Symm-Clashes
9	T	63	0	0	0	0
All	All	4491	3992	4006	16	0

The all-atom clashscore is defined as the number of clashes found per 1000 atoms (including hydrogen atoms). The all-atom clashscore for this structure is 2.

All (16) close contacts within the same asymmetric unit are listed below, sorted by their clash magnitude.

Atom-1	Atom-2	Interatomic distance (Å)	Clash overlap (Å)
1:L:96:GLY:O	1:L:109:LYS:N	2.06	0.88
3:T:118:GLN:NE2	3:T:210:MET:SD	2.60	0.74
1:L:104:ASP:CB	1:L:105:HIS:HA	2.21	0.71
1:L:104:ASP:HB3	1:L:105:HIS:HA	1.74	0.69
2:H:204:ARG:NH1	9:H:601:HOH:O	2.27	0.68
3:T:118:GLN:HG2	3:T:123:VAL:HG22	1.80	0.62
2:H:126[A]:ARG:NH2	2:H:233:GLN:OE1	2.34	0.61
1:L:109:LYS:HA	1:L:110:ARG:CB	2.36	0.56
3:T:194:PRO:O	3:T:200:ARG:NH1	2.41	0.53
1:L:109:LYS:CA	1:L:110:ARG:CB	2.95	0.45
3:T:25:TRP:O	3:T:55:THR:HB	2.17	0.44
2:H:136:SER:HB2	2:H:199:HIS:CE1	2.53	0.43
1:L:98:CYS:O	2:H:204:ARG:NH1	2.52	0.43
1:L:72:CYS:O	3:T:135:ARG:NH2	2.47	0.42
1:L:109:LYS:CB	1:L:110:ARG:C	2.89	0.42
1:L:111:SER:O	1:L:111:SER:OG	2.40	0.40

There are no symmetry-related clashes.

5.3 Torsion angles [i](#)

5.3.1 Protein backbone [i](#)

In the following table, the Percentiles column shows the percent Ramachandran outliers of the chain as a percentile score with respect to all X-ray entries followed by that with respect to entries of similar resolution.

The Analysed column shows the number of residues for which the backbone conformation was analysed, and the total number of residues.

Mol	Chain	Analysed	Favoured	Allowed	Outliers	Percentiles	
1	L	90/96 (94%)	83 (92%)	7 (8%)	0	100	100
2	H	250/249 (100%)	245 (98%)	5 (2%)	0	100	100
3	T	197/207 (95%)	194 (98%)	3 (2%)	0	100	100
All	All	537/552 (97%)	522 (97%)	15 (3%)	0	100	100

There are no Ramachandran outliers to report.

5.3.2 Protein sidechains [i](#)

In the following table, the Percentiles column shows the percent sidechain outliers of the chain as a percentile score with respect to all X-ray entries followed by that with respect to entries of similar resolution.

The Analysed column shows the number of residues for which the sidechain conformation was analysed, and the total number of residues.

Mol	Chain	Analysed	Rotameric	Outliers	Percentiles	
1	L	73/84 (87%)	71 (97%)	2 (3%)	44	54
2	H	207/210 (99%)	205 (99%)	2 (1%)	76	84
3	T	176/191 (92%)	174 (99%)	2 (1%)	73	82
All	All	456/485 (94%)	450 (99%)	6 (1%)	69	79

All (6) residues with a non-rotameric sidechain are listed below:

Mol	Chain	Res	Type
1	L	105	HIS
1	L	140	ILE
2	H	29	TRP
2	H	68	LEU
3	T	31	ASN
3	T	159	LYS

Sometimes sidechains can be flipped to improve hydrogen bonding and reduce clashes. There are no such sidechains identified.

5.3.3 RNA [i](#)

There are no RNA molecules in this entry.

5.4 Non-standard residues in protein, DNA, RNA chains [i](#)

There are no non-standard protein/DNA/RNA residues in this entry.

5.5 Carbohydrates [i](#)

There are no monosaccharides in this entry.

5.6 Ligand geometry [i](#)

Of 5 ligands modelled in this entry, 1 is monoatomic - leaving 4 for Mogul analysis.

In the following table, the Counts columns list the number of bonds (or angles) for which Mogul statistics could be retrieved, the number of bonds (or angles) that are observed in the model and the number of bonds (or angles) that are defined in the Chemical Component Dictionary. The Link column lists molecule types, if any, to which the group is linked. The Z score for a bond length (or angle) is the number of standard deviations the observed value is removed from the expected value. A bond length (or angle) with $|Z| > 2$ is considered an outlier worth inspection. RMSZ is the root-mean-square of all Z scores of the bond lengths (or angles).

Mol	Type	Chain	Res	Link	Bond lengths			Bond angles		
					Counts	RMSZ	# Z > 2	Counts	RMSZ	# Z > 2
5	FUC	L	202	1	10,10,11	0.79	0	14,14,16	0.79	0
8	CIT	T	301	-	12,12,12	1.01	0	17,17,17	1.63	1 (5%)
4	BGC	L	201	-	11,11,12	0.79	0	15,15,17	1.23	3 (20%)
6	OZ6	H	501	2	34,35,36	1.85	3 (8%)	41,45,46	1.21	2 (4%)

In the following table, the Chirals column lists the number of chiral outliers, the number of chiral centers analysed, the number of these observed in the model and the number defined in the Chemical Component Dictionary. Similar counts are reported in the Torsion and Rings columns. '2' means no outliers of that kind were identified.

Mol	Type	Chain	Res	Link	Chirals	Torsions	Rings
5	FUC	L	202	1	-	-	0/1/1/1
8	CIT	T	301	-	-	10/16/16/16	-
4	BGC	L	201	-	-	1/2/19/22	0/1/1/1
6	OZ6	H	501	2	-	5/35/35/37	0/2/2/2

All (3) bond length outliers are listed below:

Mol	Chain	Res	Type	Atoms	Z	Observed(Å)	Ideal(Å)
6	H	501	OZ6	CZ2-NE	6.42	1.45	1.33

Continued on next page...

Continued from previous page...

Mol	Chain	Res	Type	Atoms	Z	Observed(Å)	Ideal(Å)
6	H	501	OZ6	C-N1	5.51	1.46	1.34
6	H	501	OZ6	C1-N2	5.49	1.46	1.34

All (6) bond angle outliers are listed below:

Mol	Chain	Res	Type	Atoms	Z	Observed(°)	Ideal(°)
8	T	301	CIT	O6-C6-C3	4.59	121.01	113.05
6	H	501	OZ6	CA-C-N1	4.28	122.09	116.15
4	L	201	BGC	C1-O5-C5	2.64	115.77	112.19
4	L	201	BGC	C1-C2-C3	-2.11	107.07	109.67
6	H	501	OZ6	CG2-CB2-CA2	-2.07	109.70	113.93
4	L	201	BGC	C6-C5-C4	-2.01	108.29	113.00

There are no chirality outliers.

All (16) torsion outliers are listed below:

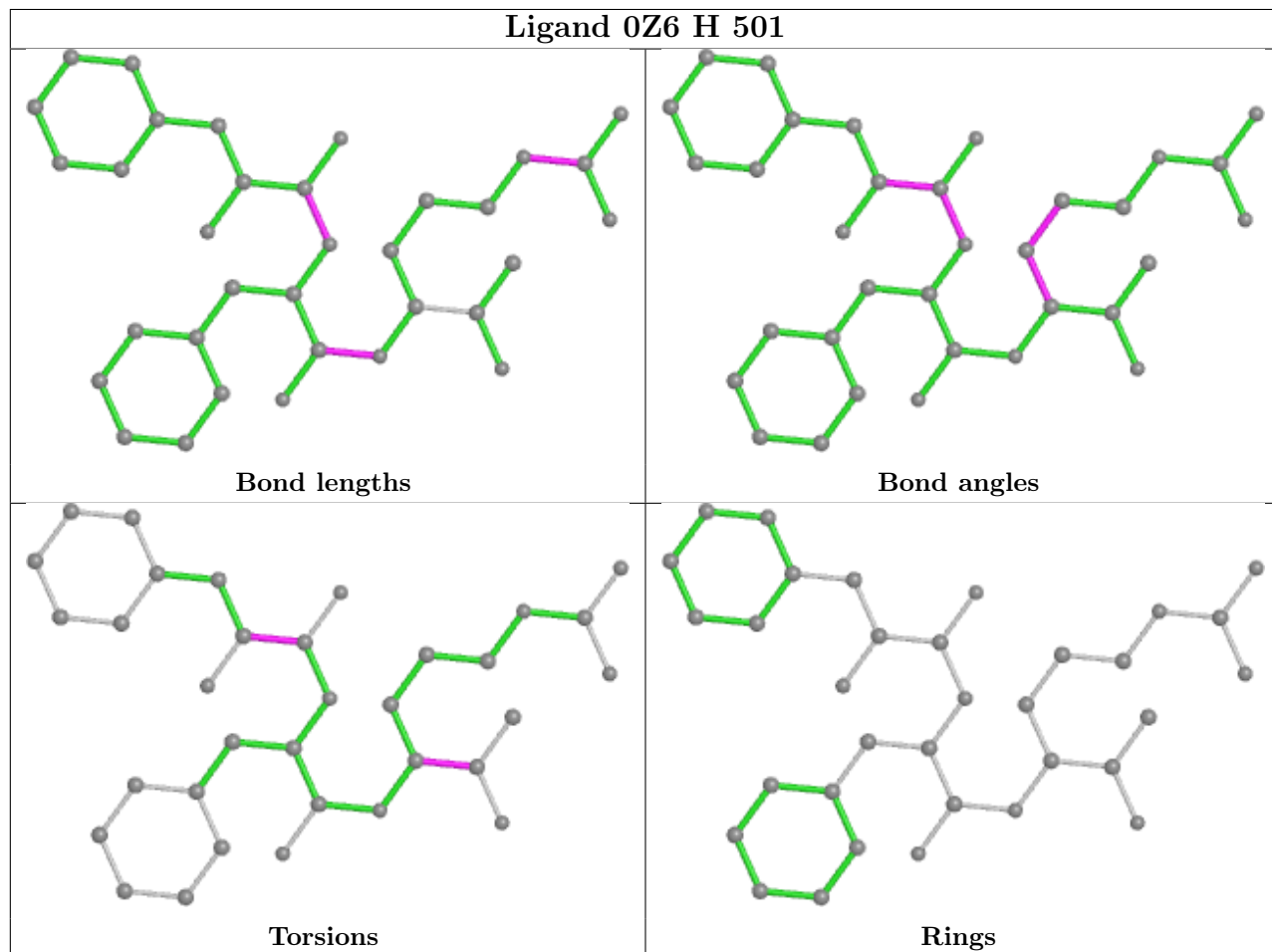
Mol	Chain	Res	Type	Atoms
6	H	501	OZ6	O-C-CA-CB
6	H	501	OZ6	N1-C-CA-CB
6	H	501	OZ6	O2-C2-CA2-CB2
8	T	301	CIT	O7-C3-C6-O5
8	T	301	CIT	O7-C3-C6-O6
4	L	201	BGC	O5-C5-C6-O6
8	T	301	CIT	O7-C3-C4-C5
8	T	301	CIT	C2-C3-C6-O6
8	T	301	CIT	C4-C3-C6-O5
8	T	301	CIT	C6-C3-C4-C5
8	T	301	CIT	C2-C3-C4-C5
8	T	301	CIT	C4-C3-C6-O6
6	H	501	OZ6	C3-C2-CA2-CB2
8	T	301	CIT	C1-C2-C3-O7
8	T	301	CIT	C2-C3-C6-O5
6	H	501	OZ6	C3-C2-CA2-N2

There are no ring outliers.

No monomer is involved in short contacts.

The following is a two-dimensional graphical depiction of Mogul quality analysis of bond lengths, bond angles, torsion angles, and ring geometry for all instances of the Ligand of Interest. In addition, ligands with molecular weight > 250 and outliers as shown on the validation Tables will also be included. For torsion angles, if less than 5% of the Mogul distribution of torsion angles is within 10 degrees of the torsion angle in question, then that torsion angle is considered an outlier.

Any bond that is central to one or more torsion angles identified as an outlier by Mogul will be highlighted in the graph. For rings, the root-mean-square deviation (RMSD) between the ring in question and similar rings identified by Mogul is calculated over all ring torsion angles. If the average RMSD is greater than 60 degrees and the minimal RMSD between the ring in question and any Mogul-identified rings is also greater than 60 degrees, then that ring is considered an outlier. The outliers are highlighted in purple. The color gray indicates Mogul did not find sufficient equivalents in the CSD to analyse the geometry.



5.7 Other polymers [i](#)

There are no such residues in this entry.

5.8 Polymer linkage issues [i](#)

There are no chain breaks in this entry.

6 Fit of model and data

6.1 Protein, DNA and RNA chains

In the following table, the column labelled ‘#RSRZ > 2’ contains the number (and percentage) of RSRZ outliers, followed by percent RSRZ outliers for the chain as percentile scores relative to all X-ray entries and entries of similar resolution. The OWAB column contains the minimum, median, 95th percentile and maximum values of the occupancy-weighted average B-factor per residue. The column labelled ‘Q < 0.9’ lists the number of (and percentage) of residues with an average occupancy less than 0.9.

Mol	Chain	Analysed	<RSRZ>	#RSRZ>2	OWAB(Å ²)	Q<0.9
1	L	94/96 (97%)	0.72	24 (25%) 0 0	30, 55, 98, 106	0
2	H	249/249 (100%)	0.28	23 (9%) 9 9	23, 33, 61, 95	1 (0%)
3	T	201/207 (97%)	0.25	11 (5%) 25 27	29, 46, 87, 109	0
All	All	544/552 (98%)	0.34	58 (10%) 6 5	23, 42, 82, 109	1 (0%)

All (58) RSRZ outliers are listed below:

Mol	Chain	Res	Type	RSRZ
1	L	51	ALA	4.8
3	T	4	THR	4.1
3	T	163	SER	4.1
1	L	105	HIS	4.1
2	H	248	PRO	3.8
1	L	106	THR	3.7
3	T	160	SER	3.7
1	L	50	CYS	3.6
2	H	53	VAL	3.5
1	L	122	ALA	3.4
2	H	31	VAL	3.3
1	L	75	ALA	3.2
2	H	46	LEU	3.2
1	L	48	ASP	3.2
2	H	45	THR	3.1
3	T	198	VAL	3.1
1	L	53	SER	3.1
1	L	143	LYS	3.1
1	L	111	SER	3.1
1	L	58	GLY	3.1
1	L	73	LEU	3.0
2	H	209	LEU	3.0
1	L	84	HIS	2.9

Continued on next page...

Continued from previous page...

Mol	Chain	Res	Type	RSRZ
1	L	110	ARG	2.9
2	H	52	VAL	2.9
2	H	60(C)	LYS	2.9
3	T	5	ASN	2.8
3	T	161	SER	2.8
3	T	164	GLY	2.8
1	L	57	ASN	2.8
2	H	36	ASN	2.8
1	L	49	GLN	2.7
1	L	65	LEU	2.6
2	H	246	PRO	2.5
2	H	211	GLY	2.5
1	L	140	ILE	2.5
3	T	137	ASN	2.4
1	L	76	PHE	2.4
2	H	104	ALA	2.4
2	H	231	VAL	2.4
1	L	142	GLU	2.4
1	L	74	PRO	2.4
2	H	60(D)	ASN	2.4
2	H	44	GLY	2.3
1	L	52	SER	2.3
2	H	54	SER	2.3
3	T	118	GLN	2.3
2	H	84	ARG	2.2
2	H	249	GLY	2.2
2	H	247	ARG	2.2
3	T	197	THR	2.2
2	H	47	ILE	2.2
2	H	63	ASN	2.1
2	H	197	GLY	2.1
1	L	59	GLY	2.1
3	T	121	THR	2.1
1	L	104	ASP	2.0
2	H	243	ARG	2.0

6.2 Non-standard residues in protein, DNA, RNA chains [\(i\)](#)

There are no non-standard protein/DNA/RNA residues in this entry.

6.3 Carbohydrates [i](#)

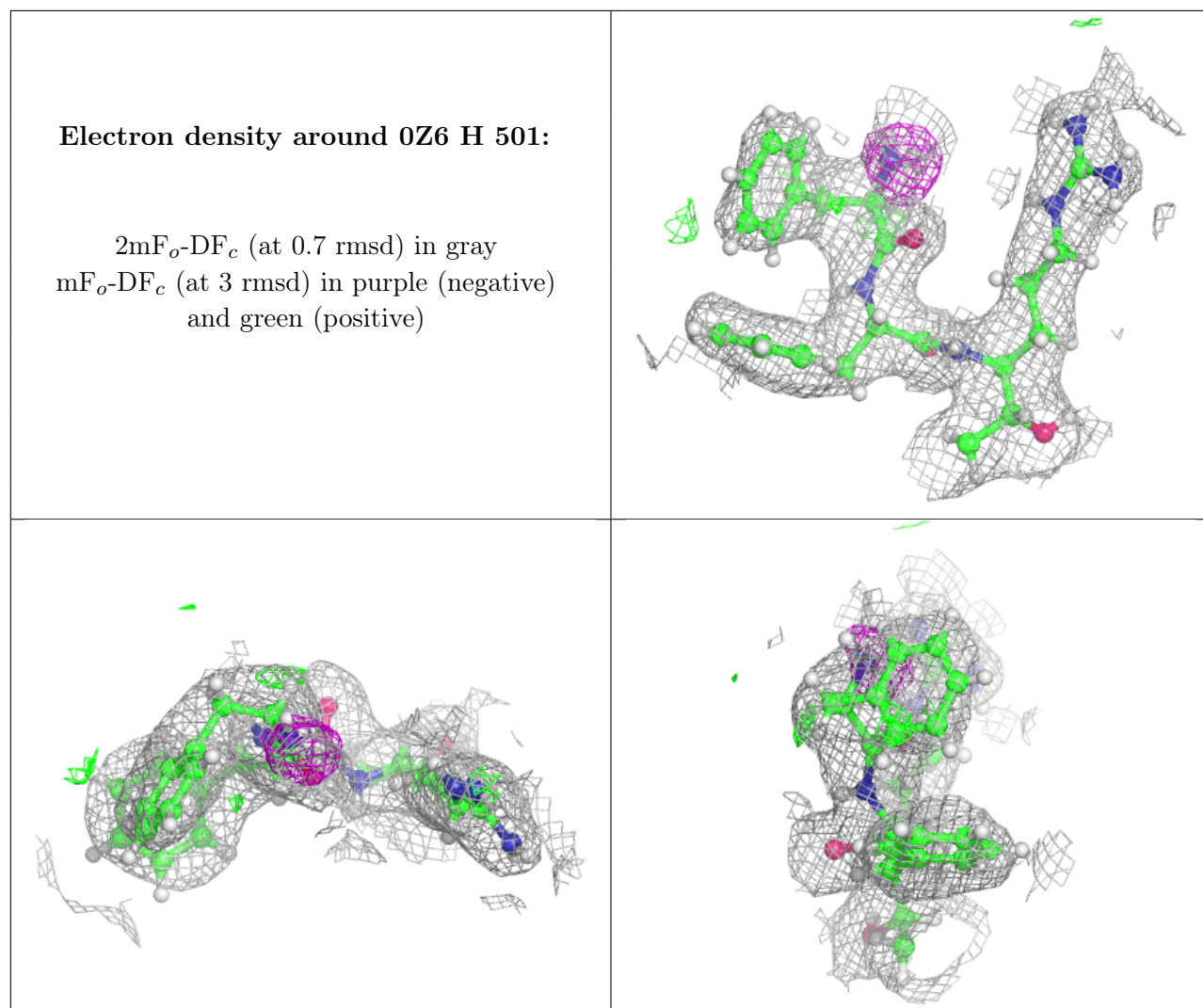
There are no monosaccharides in this entry.

6.4 Ligands [i](#)

In the following table, the Atoms column lists the number of modelled atoms in the group and the number defined in the chemical component dictionary. The B-factors column lists the minimum, median, 95th percentile and maximum values of B factors of atoms in the group. The column labelled 'Q< 0.9' lists the number of atoms with occupancy less than 0.9.

Mol	Type	Chain	Res	Atoms	RSCC	RSR	B-factors(Å ²)	Q<0.9
4	BGC	L	201	11/12	0.67	0.28	93,100,118,120	0
8	CIT	T	301	13/13	0.71	0.21	87,91,109,110	0
5	FUC	L	202	10/11	0.89	0.29	61,71,86,86	0
7	CA	H	502	1/1	0.90	0.10	64,64,64,64	0
6	OZ6	H	501	34/35	0.90	0.14	23,34,46,48	0

The following is a graphical depiction of the model fit to experimental electron density of all instances of the Ligand of Interest. In addition, ligands with molecular weight > 250 and outliers as shown on the geometry validation Tables will also be included. Each fit is shown from different orientation to approximate a three-dimensional view.



6.5 Other polymers [i](#)

There are no such residues in this entry.