



# Full wwPDB X-ray Structure Validation Report ⓘ

Sep 17, 2023 – 04:46 PM EDT

PDB ID : 4YRM  
Title : Crystal structure of *T. cruzi* Histidyl-tRNA synthetase in complex with 3-methoxypyridine (Chem 443)  
Authors : Koh, C.-Y.; Hol, W.G.J.  
Deposited on : 2015-03-15  
Resolution : 2.30 Å (reported)

This is a Full wwPDB X-ray Structure Validation Report for a publicly released PDB entry.

We welcome your comments at [validation@mail.wwpdb.org](mailto:validation@mail.wwpdb.org)

A user guide is available at

<https://www.wwpdb.org/validation/2017/XrayValidationReportHelp>

with specific help available everywhere you see the ⓘ symbol.

The types of validation reports are described at

<http://www.wwpdb.org/validation/2017/FAQs#types>.

---

The following versions of software and data (see [references ⓘ](#)) were used in the production of this report:

MolProbity : 4.02b-467  
Mogul : 1.8.5 (274361), CSD as541be (2020)  
Xtriage (Phenix) : 1.13  
EDS : 2.35.1  
Percentile statistics : 20191225.v01 (using entries in the PDB archive December 25th 2019)  
Refmac : 5.8.0158  
CCP4 : 7.0.044 (Gargrove)  
Ideal geometry (proteins) : Engh & Huber (2001)  
Ideal geometry (DNA, RNA) : Parkinson et al. (1996)  
Validation Pipeline (wwPDB-VP) : 2.35.1

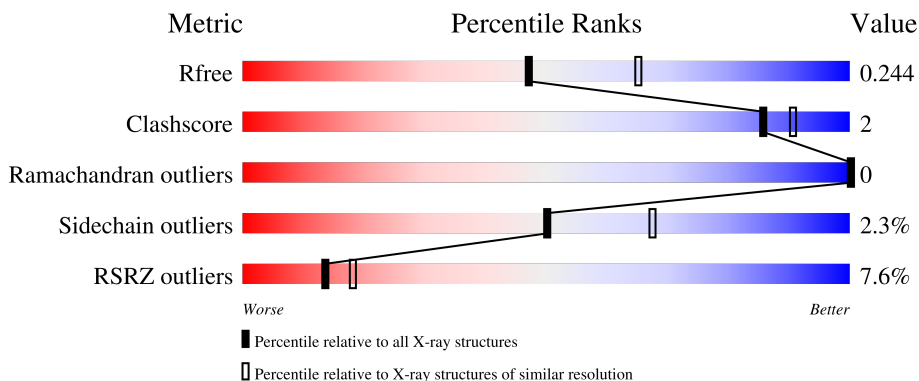
# 1 Overall quality at a glance i

The following experimental techniques were used to determine the structure:

*X-RAY DIFFRACTION*

The reported resolution of this entry is 2.30 Å.

Percentile scores (ranging between 0-100) for global validation metrics of the entry are shown in the following graphic. The table shows the number of entries on which the scores are based.



Metric	Whole archive (#Entries)	Similar resolution (#Entries, resolution range(Å))
$R_{free}$	130704	5042 (2.30-2.30)
Clashscore	141614	5643 (2.30-2.30)
Ramachandran outliers	138981	5575 (2.30-2.30)
Sidechain outliers	138945	5575 (2.30-2.30)
RSRZ outliers	127900	4938 (2.30-2.30)

The table below summarises the geometric issues observed across the polymeric chains and their fit to the electron density. The red, orange, yellow and green segments of the lower bar indicate the fraction of residues that contain outliers for  $\geq 3$ , 2, 1 and 0 types of geometric quality criteria respectively. A grey segment represents the fraction of residues that are not modelled. The numeric value for each fraction is indicated below the corresponding segment, with a dot representing fractions  $\leq 5\%$ . The upper red bar (where present) indicates the fraction of residues that have poor fit to the electron density. The numeric value is given above the bar.

Mol	Chain	Length	Quality of chain
1	A	456	<div style="display: flex; align-items: center;"> <div style="width: 6%; height: 10px; background-color: red; margin-right: 5px;"></div> <div style="width: 84%; height: 10px; background-color: green; margin-right: 5px;"></div> <div style="width: 6%; height: 10px; background-color: yellow; margin-right: 5px;"></div> <div style="width: 10%; height: 10px; background-color: grey;"></div> </div> <p style="margin-left: 20px;">6%      84%      6%      10%</p>
1	B	456	<div style="display: flex; align-items: center;"> <div style="width: 7%; height: 10px; background-color: red; margin-right: 5px;"></div> <div style="width: 85%; height: 10px; background-color: green; margin-right: 5px;"></div> <div style="width: 6%; height: 10px; background-color: yellow; margin-right: 5px;"></div> <div style="width: 9%; height: 10px; background-color: grey;"></div> </div> <p style="margin-left: 20px;">7%      85%      6%      9%</p>

## 2 Entry composition [i](#)

There are 7 unique types of molecules in this entry. The entry contains 6766 atoms, of which 0 are hydrogens and 0 are deuteriums.

In the tables below, the ZeroOcc column contains the number of atoms modelled with zero occupancy, the AltConf column contains the number of residues with at least one atom in alternate conformation and the Trace column contains the number of residues modelled with at most 2 atoms.

- Molecule 1 is a protein called Histidyl-tRNA synthetase.

Mol	Chain	Residues	Atoms					ZeroOcc	AltConf	Trace
			Total	C	N	O	S			
1	A	412	3194	2041	552	582	19	0	2	0
1	B	414	3207	2047	554	587	19	0	2	0

There are 44 discrepancies between the modelled and reference sequences:

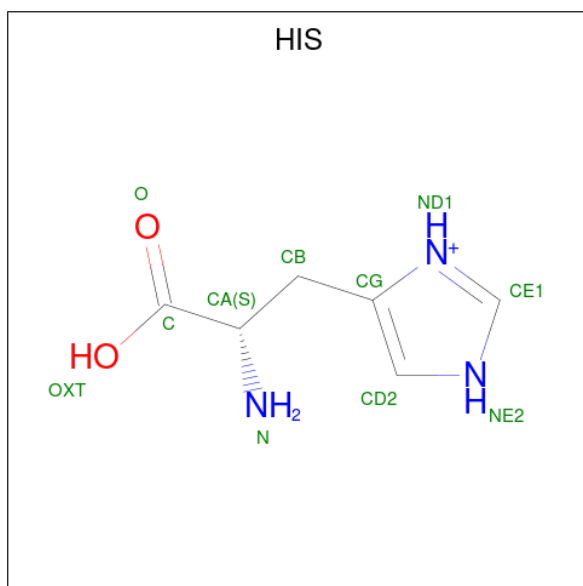
Chain	Residue	Modelled	Actual	Comment	Reference
A	-21	MET	-	initiating methionine	UNP Q4DA54
A	-20	ALA	-	expression tag	UNP Q4DA54
A	-19	HIS	-	expression tag	UNP Q4DA54
A	-18	HIS	-	expression tag	UNP Q4DA54
A	-17	HIS	-	expression tag	UNP Q4DA54
A	-16	HIS	-	expression tag	UNP Q4DA54
A	-15	HIS	-	expression tag	UNP Q4DA54
A	-14	HIS	-	expression tag	UNP Q4DA54
A	-13	MET	-	expression tag	UNP Q4DA54
A	-12	GLY	-	expression tag	UNP Q4DA54
A	-11	THR	-	expression tag	UNP Q4DA54
A	-10	LEU	-	expression tag	UNP Q4DA54
A	-9	GLU	-	expression tag	UNP Q4DA54
A	-8	ALA	-	expression tag	UNP Q4DA54
A	-7	GLN	-	expression tag	UNP Q4DA54
A	-6	THR	-	expression tag	UNP Q4DA54
A	-5	GLN	-	expression tag	UNP Q4DA54
A	-4	GLY	-	expression tag	UNP Q4DA54
A	-3	PRO	-	expression tag	UNP Q4DA54
A	-2	GLY	-	expression tag	UNP Q4DA54
A	-1	SER	-	expression tag	UNP Q4DA54
A	0	MET	-	expression tag	UNP Q4DA54
B	-21	MET	-	initiating methionine	UNP Q4DA54
B	-20	ALA	-	expression tag	UNP Q4DA54
B	-19	HIS	-	expression tag	UNP Q4DA54

*Continued on next page...*

Continued from previous page...

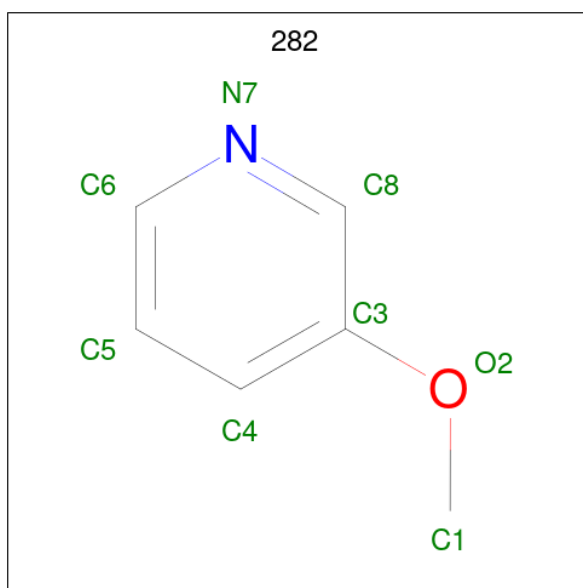
Chain	Residue	Modelled	Actual	Comment	Reference
B	-18	HIS	-	expression tag	UNP Q4DA54
B	-17	HIS	-	expression tag	UNP Q4DA54
B	-16	HIS	-	expression tag	UNP Q4DA54
B	-15	HIS	-	expression tag	UNP Q4DA54
B	-14	HIS	-	expression tag	UNP Q4DA54
B	-13	MET	-	expression tag	UNP Q4DA54
B	-12	GLY	-	expression tag	UNP Q4DA54
B	-11	THR	-	expression tag	UNP Q4DA54
B	-10	LEU	-	expression tag	UNP Q4DA54
B	-9	GLU	-	expression tag	UNP Q4DA54
B	-8	ALA	-	expression tag	UNP Q4DA54
B	-7	GLN	-	expression tag	UNP Q4DA54
B	-6	THR	-	expression tag	UNP Q4DA54
B	-5	GLN	-	expression tag	UNP Q4DA54
B	-4	GLY	-	expression tag	UNP Q4DA54
B	-3	PRO	-	expression tag	UNP Q4DA54
B	-2	GLY	-	expression tag	UNP Q4DA54
B	-1	SER	-	expression tag	UNP Q4DA54
B	0	MET	-	expression tag	UNP Q4DA54

- Molecule 2 is HISTIDINE (three-letter code: HIS) (formula: C<sub>6</sub>H<sub>10</sub>N<sub>3</sub>O<sub>2</sub>).



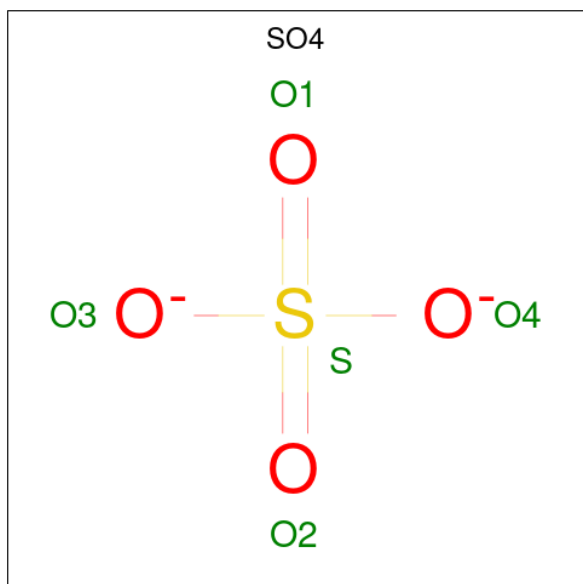
Mol	Chain	Residues	Atoms				ZeroOcc	AltConf
			Total	C	N	O		
2	A	1	11	6	3	2	0	0
2	B	1	11	6	3	2	0	0

- Molecule 3 is 3-methoxypyridine (three-letter code: 282) (formula: C<sub>6</sub>H<sub>7</sub>NO).



Mol	Chain	Residues	Atoms			ZeroOcc	AltConf	
			Total	C	N			O
3	A	1	16	12	2	2	0	1
3	B	1	16	12	2	2	0	1

- Molecule 4 is SULFATE ION (three-letter code: SO4) (formula: O<sub>4</sub>S).



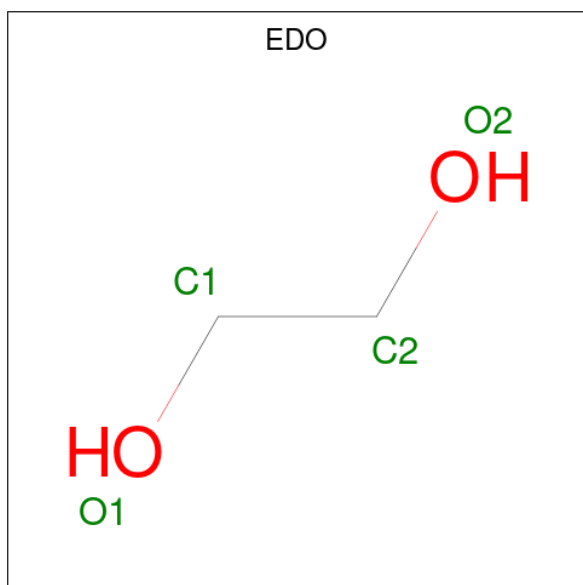
Mol	Chain	Residues	Atoms		ZeroOcc	AltConf	
			Total	O			S
4	A	1	5	4	1	0	0

*Continued on next page...*

Continued from previous page...

Mol	Chain	Residues	Atoms			ZeroOcc	AltConf
4	A	1	Total	O	S	0	0
			5	4	1		
4	B	1	Total	O	S	0	0
			5	4	1		

- Molecule 5 is 1,2-ETHANEDIOL (three-letter code: EDO) (formula:  $C_2H_6O_2$ ).



Mol	Chain	Residues	Atoms			ZeroOcc	AltConf
5	A	1	Total	C	O	0	0
			4	2	2		
5	B	1	Total	C	O	0	0
			4	2	2		

- Molecule 6 is GLYCEROL (three-letter code: GOL) (formula:  $C_3H_8O_3$ ).



Mol	Chain	Residues	Atoms	ZeroOcc	AltConf
6	A	1	Total C O 6 3 3	0	0
6	B	1	Total C O 6 3 3	0	0

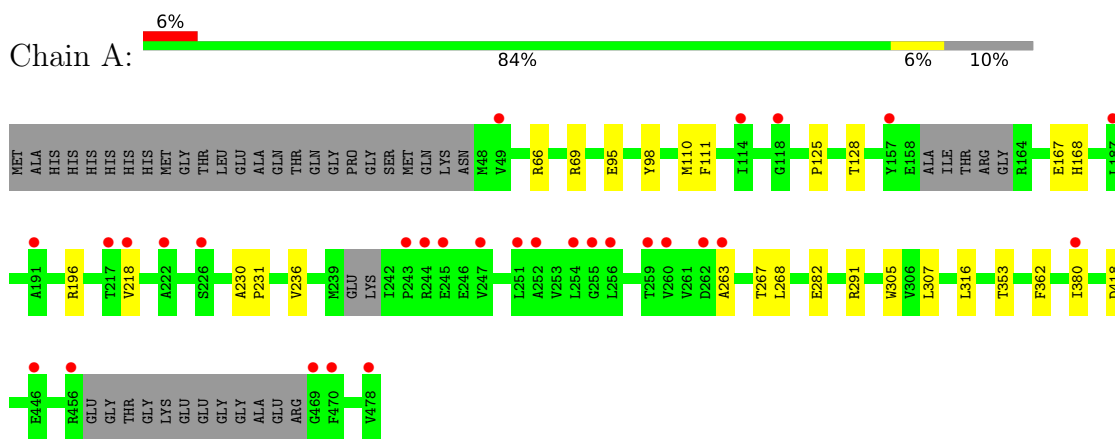
- Molecule 7 is water.

Mol	Chain	Residues	Atoms	ZeroOcc	AltConf
7	A	136	Total O 136 136	0	0
7	B	140	Total O 140 140	0	0

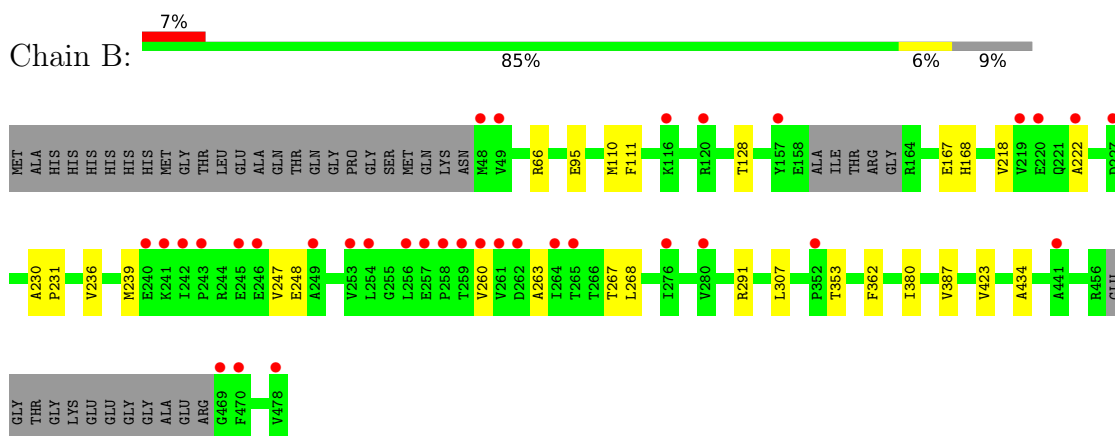
### 3 Residue-property plots [i](#)

These plots are drawn for all protein, RNA, DNA and oligosaccharide chains in the entry. The first graphic for a chain summarises the proportions of the various outlier classes displayed in the second graphic. The second graphic shows the sequence view annotated by issues in geometry and electron density. Residues are color-coded according to the number of geometric quality criteria for which they contain at least one outlier: green = 0, yellow = 1, orange = 2 and red = 3 or more. A red dot above a residue indicates a poor fit to the electron density ( $RSRZ > 2$ ). Stretches of 2 or more consecutive residues without any outlier are shown as a green connector. Residues present in the sample, but not in the model, are shown in grey.

- Molecule 1: Histidyl-tRNA synthetase



- Molecule 1: Histidyl-tRNA synthetase





## 4 Data and refinement statistics i

Property	Value	Source
Space group	C 1 2 1	Depositor
Cell constants a, b, c, $\alpha$ , $\beta$ , $\gamma$	90.13Å 119.46Å 94.55Å 90.00° 91.03° 90.00°	Depositor
Resolution (Å)	29.87 – 2.30 29.13 – 2.30	Depositor EDS
% Data completeness (in resolution range)	99.1 (29.87-2.30) 99.1 (29.13-2.30)	Depositor EDS
$R_{merge}$	0.07	Depositor
$R_{sym}$	(Not available)	Depositor
$\langle I/\sigma(I) \rangle$ <sup>1</sup>	2.46 (at 2.31Å)	Xtrriage
Refinement program	REFMAC refmac_5.8.0073	Depositor
R, $R_{free}$	0.214 , 0.242 0.217 , 0.244	Depositor DCC
$R_{free}$ test set	2255 reflections (5.12%)	wwPDB-VP
Wilson B-factor (Å <sup>2</sup> )	33.2	Xtrriage
Anisotropy	0.365	Xtrriage
Bulk solvent $k_{sol}$ (e/Å <sup>3</sup> ), $B_{sol}$ (Å <sup>2</sup> )	0.33 , 38.4	EDS
L-test for twinning <sup>2</sup>	$\langle  L  \rangle = 0.50$ , $\langle L^2 \rangle = 0.33$	Xtrriage
Estimated twinning fraction	0.024 for -h,-k,l	Xtrriage
$F_o, F_c$ correlation	0.96	EDS
Total number of atoms	6766	wwPDB-VP
Average B, all atoms (Å <sup>2</sup> )	45.0	wwPDB-VP

Xtrriage's analysis on translational NCS is as follows: *The analyses of the Patterson function reveals a significant off-origin peak that is 86.41 % of the origin peak, indicating pseudo-translational symmetry. The chance of finding a peak of this or larger height randomly in a structure without pseudo-translational symmetry is equal to 9.4575e-08. The detected translational NCS is most likely also responsible for the elevated intensity ratio.*

<sup>1</sup>Intensities estimated from amplitudes.

<sup>2</sup>Theoretical values of  $\langle |L| \rangle$ ,  $\langle L^2 \rangle$  for acentric reflections are 0.5, 0.333 respectively for untwinned datasets, and 0.375, 0.2 for perfectly twinned datasets.

## 5 Model quality [i](#)

### 5.1 Standard geometry [i](#)

Bond lengths and bond angles in the following residue types are not validated in this section: EDO, SO4, GOL, 282

The Z score for a bond length (or angle) is the number of standard deviations the observed value is removed from the expected value. A bond length (or angle) with  $|Z| > 5$  is considered an outlier worth inspection. RMSZ is the root-mean-square of all Z scores of the bond lengths (or angles).

Mol	Chain	Bond lengths		Bond angles	
		RMSZ	# Z  >5	RMSZ	# Z  >5
1	A	0.39	0/3266	0.59	0/4428
1	B	0.39	0/3280	0.59	0/4449
All	All	0.39	0/6546	0.59	0/8877

There are no bond length outliers.

There are no bond angle outliers.

There are no chirality outliers.

There are no planarity outliers.

### 5.2 Too-close contacts [i](#)

In the following table, the Non-H and H(model) columns list the number of non-hydrogen atoms and hydrogen atoms in the chain respectively. The H(added) column lists the number of hydrogen atoms added and optimized by MolProbity. The Clashes column lists the number of clashes within the asymmetric unit, whereas Symm-Clashes lists symmetry-related clashes.

Mol	Chain	Non-H	H(model)	H(added)	Clashes	Symm-Clashes
1	A	3194	0	3146	15	0
1	B	3207	0	3145	12	0
2	A	11	0	6	2	0
2	B	11	0	6	1	0
3	A	16	0	14	0	0
3	B	16	0	14	0	0
4	A	10	0	0	1	0
4	B	5	0	0	0	0
5	A	4	0	6	0	0
5	B	4	0	6	0	0
6	A	6	0	8	3	0

*Continued on next page...*

Continued from previous page...

Mol	Chain	Non-H	H(model)	H(added)	Clashes	Symm-Clashes
6	B	6	0	8	0	0
7	A	136	0	0	2	0
7	B	140	0	0	1	0
All	All	6766	0	6359	28	0

The all-atom clashscore is defined as the number of clashes found per 1000 atoms (including hydrogen atoms). The all-atom clashscore for this structure is 2.

All (28) close contacts within the same asymmetric unit are listed below, sorted by their clash magnitude.

Atom-1	Atom-2	Interatomic distance (Å)	Clash overlap (Å)
4:A:503:SO4:S	7:A:601:HOH:O	2.52	0.67
1:A:128:THR:HG1	2:A:501:HIS:N	1.98	0.62
1:A:305:TRP:HE1	6:A:506:GOL:H2	1.64	0.60
1:A:218:VAL:HG21	1:A:267:THR:HG21	1.84	0.59
1:B:218:VAL:HG21	1:B:267:THR:HG21	1.85	0.58
1:A:236:VAL:HG13	1:A:268:LEU:HD11	1.88	0.54
1:B:236:VAL:HG13	1:B:268:LEU:HD11	1.90	0.52
1:B:128:THR:HG1	2:B:501:HIS:N	2.09	0.50
1:B:222:ALA:HB1	1:B:260:VAL:HG22	1.93	0.50
1:A:230:ALA:HB3	1:A:231:PRO:HD3	1.92	0.50
1:B:230:ALA:HB3	1:B:231:PRO:HD3	1.93	0.49
1:A:66:ARG:NE	1:A:380:ILE:O	2.46	0.49
1:B:423:VAL:HG12	7:B:711:HOH:O	2.11	0.49
1:B:66:ARG:NE	1:B:380:ILE:O	2.46	0.48
1:B:263:ALA:O	1:B:267:THR:HG23	2.13	0.48
1:A:263:ALA:O	1:A:267:THR:HG23	2.13	0.47
1:A:305:TRP:HE1	6:A:506:GOL:C2	2.27	0.47
1:A:316:LEU:CD1	2:A:501:HIS:HA	2.45	0.46
1:A:95:GLU:HG3	1:A:110:MET:HE3	1.98	0.46
1:A:418:ASP:HB2	7:A:712:HOH:O	2.16	0.44
1:A:196:ARG:HE	6:A:506:GOL:C3	2.31	0.43
1:A:236:VAL:CG1	1:A:268:LEU:HD11	2.48	0.42
1:B:239:MET:SD	1:B:247:VAL:HG11	2.59	0.42
1:A:282:GLU:OE2	1:A:291:ARG:NH1	2.50	0.42
1:B:95:GLU:HG3	1:B:110:MET:HE3	2.02	0.41
1:B:236:VAL:CG1	1:B:268:LEU:HD11	2.50	0.41
1:A:98:TYR:CE1	1:A:125:PRO:HD2	2.56	0.41
1:B:387:VAL:HG23	1:B:434:ALA:HB2	2.02	0.40

There are no symmetry-related clashes.

## 5.3 Torsion angles [i](#)

### 5.3.1 Protein backbone [i](#)

In the following table, the Percentiles column shows the percent Ramachandran outliers of the chain as a percentile score with respect to all X-ray entries followed by that with respect to entries of similar resolution.

The Analysed column shows the number of residues for which the backbone conformation was analysed, and the total number of residues.

Mol	Chain	Analysed	Favoured	Allowed	Outliers	Percentiles	
1	A	406/456 (89%)	400 (98%)	6 (2%)	0	100	100
1	B	410/456 (90%)	404 (98%)	6 (2%)	0	100	100
All	All	816/912 (90%)	804 (98%)	12 (2%)	0	100	100

There are no Ramachandran outliers to report.

### 5.3.2 Protein sidechains [i](#)

In the following table, the Percentiles column shows the percent sidechain outliers of the chain as a percentile score with respect to all X-ray entries followed by that with respect to entries of similar resolution.

The Analysed column shows the number of residues for which the sidechain conformation was analysed, and the total number of residues.

Mol	Chain	Analysed	Rotameric	Outliers	Percentiles	
1	A	332/380 (87%)	325 (98%)	7 (2%)	53	70
1	B	332/380 (87%)	324 (98%)	8 (2%)	49	66
All	All	664/760 (87%)	649 (98%)	15 (2%)	50	67

All (15) residues with a non-rotameric sidechain are listed below:

Mol	Chain	Res	Type
1	A	69	ARG
1	A	111	PHE
1	A	167	GLU
1	A	168	HIS
1	A	307	LEU
1	A	353	THR
1	A	362	PHE
1	B	111	PHE

*Continued on next page...*

*Continued from previous page...*

Mol	Chain	Res	Type
1	B	167	GLU
1	B	168	HIS
1	B	248	GLU
1	B	291	ARG
1	B	307	LEU
1	B	353	THR
1	B	362	PHE

Sometimes sidechains can be flipped to improve hydrogen bonding and reduce clashes. All (2) such sidechains are listed below:

Mol	Chain	Res	Type
1	A	112	ASN
1	B	112	ASN

### 5.3.3 RNA [i](#)

There are no RNA molecules in this entry.

## 5.4 Non-standard residues in protein, DNA, RNA chains [i](#)

There are no non-standard protein/DNA/RNA residues in this entry.

## 5.5 Carbohydrates [i](#)

There are no monosaccharides in this entry.

## 5.6 Ligand geometry [i](#)

13 ligands are modelled in this entry.

In the following table, the Counts columns list the number of bonds (or angles) for which Mogul statistics could be retrieved, the number of bonds (or angles) that are observed in the model and the number of bonds (or angles) that are defined in the Chemical Component Dictionary. The Link column lists molecule types, if any, to which the group is linked. The Z score for a bond length (or angle) is the number of standard deviations the observed value is removed from the expected value. A bond length (or angle) with  $|Z| > 2$  is considered an outlier worth inspection. RMSZ is the root-mean-square of all Z scores of the bond lengths (or angles).

Mol	Type	Chain	Res	Link	Bond lengths			Bond angles		
					Counts	RMSZ	# Z  > 2	Counts	RMSZ	# Z  > 2
3	282	A	502[A]	-	8,8,8	0.17	0	9,9,9	0.40	0
4	SO4	B	503	-	4,4,4	0.36	0	6,6,6	0.18	0
5	EDO	A	505	-	3,3,3	0.37	0	2,2,2	0.60	0
4	SO4	A	503	-	4,4,4	0.44	0	6,6,6	0.27	0
6	GOL	A	506	-	5,5,5	0.34	0	5,5,5	0.73	0
3	282	B	502[B]	-	8,8,8	0.17	0	9,9,9	0.43	0
2	HIS	B	501	-	6,11,11	1.04	1 (16%)	7,14,14	1.40	2 (28%)
3	282	B	502[A]	-	8,8,8	0.15	0	9,9,9	0.42	0
6	GOL	B	505	-	5,5,5	0.28	0	5,5,5	0.45	0
5	EDO	B	504	-	3,3,3	0.41	0	2,2,2	0.50	0
3	282	A	502[B]	-	8,8,8	0.18	0	9,9,9	0.41	0
4	SO4	A	504	-	4,4,4	0.34	0	6,6,6	0.31	0
2	HIS	A	501	-	6,11,11	1.01	1 (16%)	7,14,14	1.48	3 (42%)

In the following table, the Chirals column lists the number of chiral outliers, the number of chiral centers analysed, the number of these observed in the model and the number defined in the Chemical Component Dictionary. Similar counts are reported in the Torsion and Rings columns. '-' means no outliers of that kind were identified.

Mol	Type	Chain	Res	Link	Chirals	Torsions	Rings
3	282	A	502[A]	-	-	0/2/2/2	0/1/1/1
5	EDO	A	505	-	-	0/1/1/1	-
6	GOL	A	506	-	-	2/4/4/4	-
3	282	B	502[B]	-	-	0/2/2/2	0/1/1/1
2	HIS	B	501	-	-	0/8/8/8	0/1/1/1
3	282	B	502[A]	-	-	0/2/2/2	0/1/1/1
6	GOL	B	505	-	-	2/4/4/4	-
5	EDO	B	504	-	-	0/1/1/1	-
3	282	A	502[B]	-	-	0/2/2/2	0/1/1/1
2	HIS	A	501	-	-	0/8/8/8	0/1/1/1

All (2) bond length outliers are listed below:

Mol	Chain	Res	Type	Atoms	Z	Observed(Å)	Ideal(Å)
2	B	501	HIS	OXT-C	-2.29	1.23	1.30
2	A	501	HIS	OXT-C	-2.25	1.23	1.30

All (5) bond angle outliers are listed below:

Mol	Chain	Res	Type	Atoms	Z	Observed(°)	Ideal(°)
2	A	501	HIS	OXT-C-O	-2.27	118.92	124.09

*Continued on next page...*

*Continued from previous page...*

Mol	Chain	Res	Type	Atoms	Z	Observed(°)	Ideal(°)
2	B	501	HIS	OXT-C-O	-2.20	119.10	124.09
2	A	501	HIS	OXT-C-CA	2.17	120.77	113.38
2	B	501	HIS	OXT-C-CA	2.02	120.27	113.38
2	A	501	HIS	CD2-NE2-CE1	2.00	108.91	105.78

There are no chirality outliers.

All (4) torsion outliers are listed below:

Mol	Chain	Res	Type	Atoms
6	B	505	GOL	O1-C1-C2-C3
6	A	506	GOL	C1-C2-C3-O3
6	B	505	GOL	O1-C1-C2-O2
6	A	506	GOL	O2-C2-C3-O3

There are no ring outliers.

4 monomers are involved in 7 short contacts:

Mol	Chain	Res	Type	Clashes	Symm-Clashes
4	A	503	SO4	1	0
6	A	506	GOL	3	0
2	B	501	HIS	1	0
2	A	501	HIS	2	0

## 5.7 Other polymers [i](#)

There are no such residues in this entry.

## 5.8 Polymer linkage issues [i](#)

There are no chain breaks in this entry.

## 6 Fit of model and data

### 6.1 Protein, DNA and RNA chains

In the following table, the column labelled ‘#RSRZ > 2’ contains the number (and percentage) of RSRZ outliers, followed by percent RSRZ outliers for the chain as percentile scores relative to all X-ray entries and entries of similar resolution. The OWAB column contains the minimum, median, 95<sup>th</sup> percentile and maximum values of the occupancy-weighted average B-factor per residue. The column labelled ‘Q < 0.9’ lists the number of (and percentage) of residues with an average occupancy less than 0.9.

Mol	Chain	Analysed	<RSRZ>	#RSRZ>2	OWAB(Å <sup>2</sup> )	Q<0.9
1	A	412/456 (90%)	0.32	29 (7%) 16 21	20, 40, 90, 105	0
1	B	414/456 (90%)	0.37	34 (8%) 11 15	19, 41, 96, 122	0
All	All	826/912 (90%)	0.34	63 (7%) 13 18	19, 40, 93, 122	0

All (63) RSRZ outliers are listed below:

Mol	Chain	Res	Type	RSRZ
1	B	242	ILE	5.9
1	A	243	PRO	5.6
1	B	249	ALA	5.4
1	B	261	VAL	4.9
1	A	254	LEU	4.7
1	A	252	ALA	4.2
1	A	251	LEU	4.2
1	B	280	VAL	4.1
1	B	256	LEU	4.1
1	B	227	ASP	4.1
1	B	276	ILE	3.9
1	A	245	GLU	3.8
1	A	256	LEU	3.7
1	B	219	VAL	3.7
1	B	258	PRO	3.6
1	A	118	GLY	3.5
1	B	241	LYS	3.5
1	A	226	SER	3.5
1	A	262	ASP	3.5
1	A	259	THR	3.4
1	A	244	ARG	3.4
1	B	243	PRO	3.2
1	B	245	GLU	3.2
1	B	157	TYR	3.1

*Continued on next page...*



*Continued from previous page...*

<b>Mol</b>	<b>Chain</b>	<b>Res</b>	<b>Type</b>	<b>RSRZ</b>
1	B	254	LEU	3.1
1	B	240	GLU	3.1
1	B	259	THR	3.1
1	B	262	ASP	3.0
1	B	469	GLY	3.0
1	B	352	PRO	2.9
1	B	222	ALA	2.9
1	B	246	GLU	2.9
1	B	116	LYS	2.8
1	A	470	PHE	2.8
1	A	222	ALA	2.7
1	A	446	GLU	2.8
1	B	260	VAL	2.7
1	B	220	GLU	2.7
1	A	247	VAL	2.7
1	B	264	ILE	2.6
1	A	456	ARG	2.6
1	A	478	VAL	2.6
1	A	255	GLY	2.6
1	A	260	VAL	2.5
1	A	263	ALA	2.5
1	B	441	ALA	2.5
1	A	469	GLY	2.5
1	B	257	GLU	2.5
1	B	470	PHE	2.5
1	A	49	VAL	2.4
1	B	49	VAL	2.4
1	B	48	MET	2.4
1	B	120	ARG	2.4
1	A	187	LEU	2.3
1	A	191	ALA	2.2
1	A	380	ILE	2.2
1	A	217	THR	2.1
1	B	265	THR	2.1
1	B	478	VAL	2.1
1	A	218	VAL	2.1
1	A	157	TYR	2.1
1	B	253	VAL	2.1
1	A	114	ILE	2.0

## 6.2 Non-standard residues in protein, DNA, RNA chains [i](#)

There are no non-standard protein/DNA/RNA residues in this entry.

## 6.3 Carbohydrates [i](#)

There are no monosaccharides in this entry.

## 6.4 Ligands [i](#)

In the following table, the Atoms column lists the number of modelled atoms in the group and the number defined in the chemical component dictionary. The B-factors column lists the minimum, median, 95<sup>th</sup> percentile and maximum values of B factors of atoms in the group. The column labelled 'Q< 0.9' lists the number of atoms with occupancy less than 0.9.

Mol	Type	Chain	Res	Atoms	RSCC	RSR	B-factors( $\text{\AA}^2$ )	Q<0.9
6	GOL	A	506	6/6	0.80	0.19	43,48,51,52	0
5	EDO	B	504	4/4	0.85	0.17	51,54,57,60	0
4	SO4	A	504	5/5	0.88	0.23	79,87,89,90	0
5	EDO	A	505	4/4	0.88	0.12	48,48,50,53	0
3	282	B	502[A]	8/8	0.90	0.21	38,39,40,41	8
3	282	B	502[B]	8/8	0.90	0.21	41,43,43,44	8
6	GOL	B	505	6/6	0.90	0.17	50,54,54,57	0
4	SO4	B	503	5/5	0.91	0.24	74,78,81,83	0
3	282	A	502[A]	8/8	0.92	0.22	40,42,43,44	8
3	282	A	502[B]	8/8	0.92	0.22	44,46,46,47	8
2	HIS	B	501	11/11	0.96	0.18	21,22,25,26	0
2	HIS	A	501	11/11	0.97	0.18	22,23,24,24	0
4	SO4	A	503	5/5	0.97	0.10	43,46,51,52	0

## 6.5 Other polymers [i](#)

There are no such residues in this entry.