



Full wwPDB X-ray Structure Validation Report ⓘ

Oct 30, 2023 – 06:33 PM JST

PDB ID : 4XMX
Title : Crystal Structure of Met260Ala mutant of E. coli Aminopeptidase N in complex with Bestatin
Authors : Addlagatta, A.; Gumpena, R.; Kishor, C.
Deposited on : 2015-01-15
Resolution : 2.30 Å(reported)

This is a Full wwPDB X-ray Structure Validation Report for a publicly released PDB entry.

We welcome your comments at validation@mail.wwpdb.org

A user guide is available at

<https://www.wwpdb.org/validation/2017/XrayValidationReportHelp>

with specific help available everywhere you see the ⓘ symbol.

The types of validation reports are described at

<http://www.wwpdb.org/validation/2017/FAQs#types>.

The following versions of software and data (see [references ⓘ](#)) were used in the production of this report:

MolProbity : 4.02b-467
Mogul : 1.8.5 (274361), CSD as541be (2020)
Xtriage (Phenix) : 1.13
EDS : 2.36
buster-report : 1.1.7 (2018)
Percentile statistics : 20191225.v01 (using entries in the PDB archive December 25th 2019)
Refmac : 5.8.0158
CCP4 : 7.0.044 (Gargrove)
Ideal geometry (proteins) : Engh & Huber (2001)
Ideal geometry (DNA, RNA) : Parkinson et al. (1996)
Validation Pipeline (wwPDB-VP) : 2.36

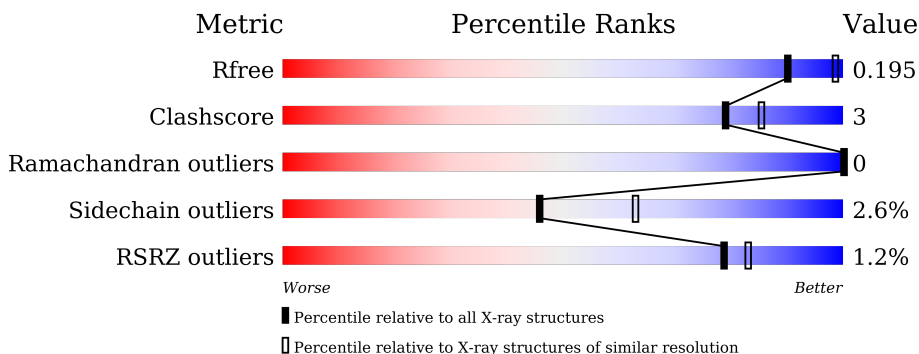
1 Overall quality at a glance

The following experimental techniques were used to determine the structure:

X-RAY DIFFRACTION

The reported resolution of this entry is 2.30 Å.

Percentile scores (ranging between 0-100) for global validation metrics of the entry are shown in the following graphic. The table shows the number of entries on which the scores are based.



Metric	Whole archive (#Entries)	Similar resolution (#Entries, resolution range(Å))
R_{free}	130704	5042 (2.30-2.30)
Clashscore	141614	5643 (2.30-2.30)
Ramachandran outliers	138981	5575 (2.30-2.30)
Sidechain outliers	138945	5575 (2.30-2.30)
RSRZ outliers	127900	4938 (2.30-2.30)

The table below summarises the geometric issues observed across the polymeric chains and their fit to the electron density. The red, orange, yellow and green segments of the lower bar indicate the fraction of residues that contain outliers for ≥ 3 , 2, 1 and 0 types of geometric quality criteria respectively. A grey segment represents the fraction of residues that are not modelled. The numeric value for each fraction is indicated below the corresponding segment, with a dot representing fractions $\leq 5\%$. The upper red bar (where present) indicates the fraction of residues that have poor fit to the electron density. The numeric value is given above the bar.

Mol	Chain	Length	Quality of chain
1	A	866	

The following table lists non-polymeric compounds, carbohydrate monomers and non-standard residues in protein, DNA, RNA chains that are outliers for geometric or electron-density-fit criteria:

Mol	Type	Chain	Res	Chirality	Geometry	Clashes	Electron density
6	MLI	A	915	-	-	X	-
6	MLI	A	922	-	X	-	-

Continued on next page...

Continued from previous page...

Mol	Type	Chain	Res	Chirality	Geometry	Clashes	Electron density
6	MLI	A	923	-	X	-	-

2 Entry composition [i](#)

There are 7 unique types of molecules in this entry. The entry contains 7806 atoms, of which 0 are hydrogens and 0 are deuteriums.

In the tables below, the ZeroOcc column contains the number of atoms modelled with zero occupancy, the AltConf column contains the number of residues with at least one atom in alternate conformation and the Trace column contains the number of residues modelled with at most 2 atoms.

- Molecule 1 is a protein called Aminopeptidase N.

Mol	Chain	Residues	Atoms					ZeroOcc	AltConf	Trace
			Total	C	N	O	S			
1	A	866	6988	4425	1213	1323	27	0	8	0

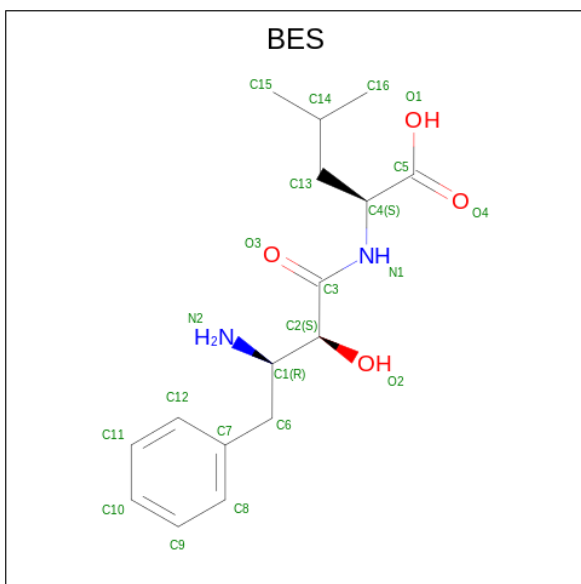
There is a discrepancy between the modelled and reference sequences:

Chain	Residue	Modelled	Actual	Comment	Reference
A	260	ALA	MET	engineered mutation	UNP P04825

- Molecule 2 is ZINC ION (three-letter code: ZN) (formula: Zn).

Mol	Chain	Residues	Atoms		ZeroOcc	AltConf
2	A	1	Total	Zn	0	0
			1	1		

- Molecule 3 is 2-(3-AMINO-2-HYDROXY-4-PHENYL-BUTYRYLAMINO)-4-METHYL-PENTANOIC ACID (three-letter code: BES) (formula: C₁₆H₂₄N₂O₄).

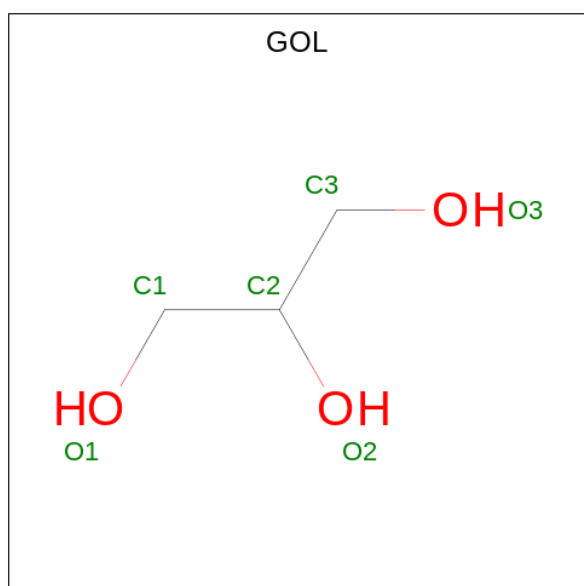


Mol	Chain	Residues	Atoms				ZeroOcc	AltConf
			Total	C	N	O		
3	A	1	22	16	2	4	0	0

- Molecule 4 is SODIUM ION (three-letter code: NA) (formula: Na).

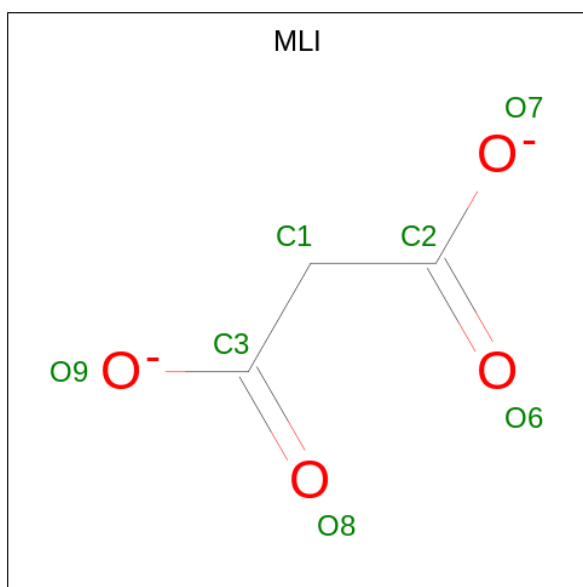
Mol	Chain	Residues	Atoms		ZeroOcc	AltConf
			Total	Na		
4	A	5	5	5	0	0

- Molecule 5 is GLYCEROL (three-letter code: GOL) (formula: C₃H₈O₃).



Mol	Chain	Residues	Atoms			ZeroOcc	AltConf
			Total	C	O		
5	A	1	6	3	3	0	0
5	A	1	6	3	3	0	0
5	A	1	6	3	3	0	0
5	A	1	6	3	3	0	0
5	A	1	6	3	3	0	0
5	A	1	6	3	3	0	0

- Molecule 6 is MALONATE ION (three-letter code: MLI) (formula: C₃H₂O₄).



Mol	Chain	Residues	Atoms	ZeroOcc	AltConf
6	A	1	Total C O 7 3 4	0	0
6	A	1	Total C O 7 3 4	0	0
6	A	1	Total C O 7 3 4	0	0
6	A	1	Total C O 7 3 4	0	0
6	A	1	Total C O 7 3 4	0	0
6	A	1	Total C O 14 6 8	0	1
6	A	1	Total C O 7 3 4	0	0
6	A	1	Total C O 7 3 4	0	0
6	A	1	Total C O 7 3 4	0	0
6	A	1	Total C O 7 3 4	0	0
6	A	1	Total C O 7 3 4	0	0
6	A	1	Total C O 7 3 4	0	0
6	A	1	Total C O 7 3 4	0	0

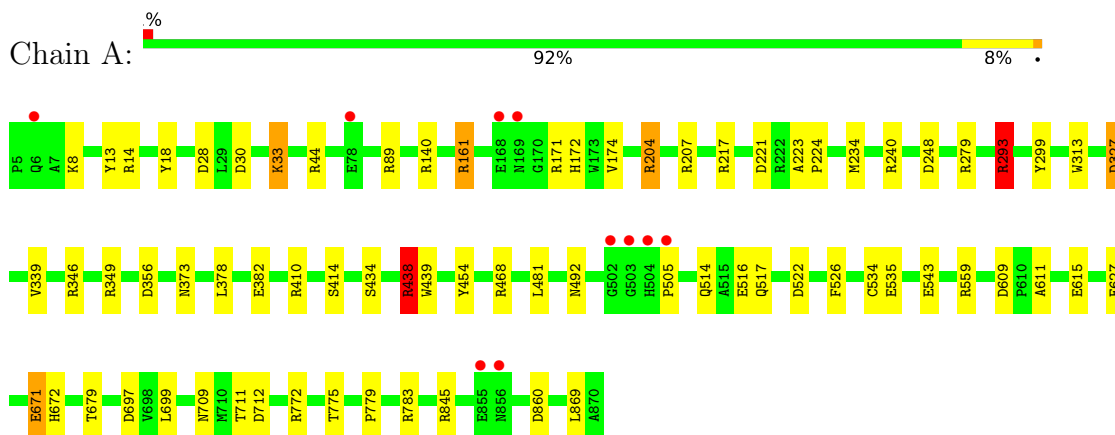
- Molecule 7 is water.

Mol	Chain	Residues	Atoms		ZeroOcc	AltConf
7	A	656	Total 656	O 656	0	0

3 Residue-property plots [i](#)

These plots are drawn for all protein, RNA, DNA and oligosaccharide chains in the entry. The first graphic for a chain summarises the proportions of the various outlier classes displayed in the second graphic. The second graphic shows the sequence view annotated by issues in geometry and electron density. Residues are color-coded according to the number of geometric quality criteria for which they contain at least one outlier: green = 0, yellow = 1, orange = 2 and red = 3 or more. A red dot above a residue indicates a poor fit to the electron density ($RSRZ > 2$). Stretches of 2 or more consecutive residues without any outlier are shown as a green connector. Residues present in the sample, but not in the model, are shown in grey.

- Molecule 1: Aminopeptidase N



4 Data and refinement statistics

Property	Value	Source
Space group	P 31 2 1	Depositor
Cell constants a, b, c, α , β , γ	121.04Å 121.04Å 170.66Å 90.00° 90.00° 120.00°	Depositor
Resolution (Å)	20.81 – 2.30 20.81 – 2.30	Depositor EDS
% Data completeness (in resolution range)	99.7 (20.81-2.30) 99.9 (20.81-2.30)	Depositor EDS
R_{merge}	(Not available)	Depositor
R_{sym}	0.16	Depositor
$\langle I/\sigma(I) \rangle$ ¹	2.96 (at 2.30Å)	Xtrriage
Refinement program	REFMAC 5.8.0073	Depositor
R, R_{free}	0.145 , 0.191 0.154 , 0.195	Depositor DCC
R_{free} test set	3277 reflections (5.07%)	wwPDB-VP
Wilson B-factor (Å ²)	23.4	Xtrriage
Anisotropy	0.101	Xtrriage
Bulk solvent k_{sol} (e/Å ³), B_{sol} (Å ²)	0.42 , 57.6	EDS
L-test for twinning ²	$\langle L \rangle = 0.52$, $\langle L^2 \rangle = 0.35$	Xtrriage
Estimated twinning fraction	0.012 for -h,-k,l	Xtrriage
F_o, F_c correlation	0.96	EDS
Total number of atoms	7806	wwPDB-VP
Average B, all atoms (Å ²)	26.0	wwPDB-VP

Xtrriage's analysis on translational NCS is as follows: *The largest off-origin peak in the Patterson function is 4.36% of the height of the origin peak. No significant pseudotranslation is detected.*

¹Intensities estimated from amplitudes.

²Theoretical values of $\langle |L| \rangle$, $\langle L^2 \rangle$ for acentric reflections are 0.5, 0.333 respectively for untwinned datasets, and 0.375, 0.2 for perfectly twinned datasets.

5 Model quality [i](#)

5.1 Standard geometry [i](#)

Bond lengths and bond angles in the following residue types are not validated in this section: MLI, NA, BES, ZN, GOL

The Z score for a bond length (or angle) is the number of standard deviations the observed value is removed from the expected value. A bond length (or angle) with $|Z| > 5$ is considered an outlier worth inspection. RMSZ is the root-mean-square of all Z scores of the bond lengths (or angles).

Mol	Chain	Bond lengths		Bond angles	
		RMSZ	# Z >5	RMSZ	# Z >5
1	A	0.97	3/7167 (0.0%)	0.98	17/9730 (0.2%)

All (3) bond length outliers are listed below:

Mol	Chain	Res	Type	Atoms	Z	Observed(Å)	Ideal(Å)
1	A	627	GLU	CD-OE1	6.19	1.32	1.25
1	A	671	GLU	CD-OE1	5.61	1.31	1.25
1	A	543	GLU	CG-CD	5.17	1.59	1.51

All (17) bond angle outliers are listed below:

Mol	Chain	Res	Type	Atoms	Z	Observed(°)	Ideal(°)
1	A	204[A]	ARG	NE-CZ-NH2	-10.92	114.84	120.30
1	A	204[B]	ARG	NE-CZ-NH2	-10.92	114.84	120.30
1	A	293	ARG	NE-CZ-NH1	10.05	125.33	120.30
1	A	349	ARG	NE-CZ-NH2	-9.79	115.40	120.30
1	A	221	ASP	CB-CG-OD1	9.49	126.84	118.30
1	A	248[A]	ASP	CB-CG-OD2	7.63	125.17	118.30
1	A	248[B]	ASP	CB-CG-OD2	7.63	125.17	118.30
1	A	240	ARG	NE-CZ-NH1	5.82	123.21	120.30
1	A	438	ARG	NE-CZ-NH2	-5.64	117.48	120.30
1	A	410	ARG	NE-CZ-NH2	-5.62	117.49	120.30
1	A	712	ASP	CB-CG-OD1	-5.62	113.25	118.30
1	A	609	ASP	CB-CG-OD1	5.51	123.26	118.30
1	A	349	ARG	NE-CZ-NH1	5.47	123.03	120.30
1	A	204[A]	ARG	CG-CD-NE	-5.39	100.47	111.80
1	A	204[B]	ARG	CG-CD-NE	-5.39	100.47	111.80
1	A	697	ASP	CB-CG-OD1	5.22	123.00	118.30
1	A	772	ARG	NE-CZ-NH2	5.12	122.86	120.30

There are no chirality outliers.

There are no planarity outliers.

5.2 Too-close contacts

In the following table, the Non-H and H(model) columns list the number of non-hydrogen atoms and hydrogen atoms in the chain respectively. The H(added) column lists the number of hydrogen atoms added and optimized by MolProbity. The Clashes column lists the number of clashes within the asymmetric unit, whereas Symm-Clashes lists symmetry-related clashes.

Mol	Chain	Non-H	H(model)	H(added)	Clashes	Symm-Clashes
1	A	6988	0	6844	37	0
2	A	1	0	0	0	0
3	A	22	0	22	0	0
4	A	5	0	0	0	0
5	A	36	0	48	2	0
6	A	98	0	28	7	0
7	A	656	0	0	11	0
All	All	7806	0	6942	40	0

The all-atom clashscore is defined as the number of clashes found per 1000 atoms (including hydrogen atoms). The all-atom clashscore for this structure is 3.

All (40) close contacts within the same asymmetric unit are listed below, sorted by their clash magnitude.

Atom-1	Atom-2	Interatomic distance (Å)	Clash overlap (Å)
1:A:293:ARG:HD3	1:A:327:ASP:OD1	1.86	0.76
1:A:204[B]:ARG:HD3	7:A:1051:HOH:O	1.90	0.70
1:A:517:GLN:HG2	7:A:1022:HOH:O	1.92	0.70
1:A:845[B]:ARG:NH2	1:A:869:LEU:O	2.24	0.69
1:A:346[A]:ARG:NH1	1:A:615:GLU:OE1	2.29	0.66
1:A:672:HIS:ND1	6:A:915:MLI:H11	2.13	0.64
1:A:217:ARG:HD2	7:A:1339:HOH:O	2.00	0.62
1:A:28:ASP:OD1	1:A:171:ARG:NH2	2.37	0.57
1:A:140:ARG:HD3	7:A:1499:HOH:O	2.04	0.56
1:A:516:GLU:C	1:A:517:GLN:HG3	2.26	0.55
1:A:339:VAL:HG21	1:A:611:ALA:HB1	1.90	0.53
1:A:492:ASN:HB3	1:A:526:PHE:CE2	2.44	0.52
1:A:204[A]:ARG:NH2	7:A:1011:HOH:O	2.41	0.51
1:A:18:TYR:CZ	1:A:44:ARG:HD3	2.47	0.50
1:A:454:TYR:H	5:A:910:GOL:H2	1.77	0.50
1:A:30:ASP:HB3	1:A:33:LYS:O	2.12	0.49

Continued on next page...

Continued from previous page...

Atom-1	Atom-2	Interatomic distance (Å)	Clash overlap (Å)
1:A:514:GLN:H	1:A:517:GLN:NE2	2.10	0.49
1:A:161:ARG:HD3	1:A:174:VAL:HG13	1.95	0.48
1:A:382:GLU:HG3	7:A:1332:HOH:O	2.12	0.47
6:A:926:MLI:O9	7:A:1001:HOH:O	2.20	0.47
1:A:13:TYR:O	1:A:14:ARG:HD3	2.14	0.47
1:A:18:TYR:OH	1:A:44:ARG:HD3	2.14	0.47
1:A:438:ARG:HG2	1:A:481:LEU:HD23	1.97	0.46
1:A:672:HIS:ND1	6:A:915:MLI:C1	2.77	0.46
1:A:234:MET:HG2	1:A:299:TYR:CZ	2.51	0.46
1:A:414:SER:HB2	7:A:1164:HOH:O	2.15	0.46
1:A:468:ARG:NH1	7:A:1023:HOH:O	2.48	0.46
1:A:679:THR:HG23	6:A:922:MLI:H11	1.98	0.46
6:A:920:MLI:O7	6:A:920:MLI:O8	2.32	0.45
1:A:516:GLU:O	1:A:517:GLN:HG3	2.17	0.45
1:A:439:TRP:CE3	1:A:481:LEU:HD13	2.53	0.43
1:A:313:TRP:HB2	5:A:912:GOL:H11	2.01	0.43
1:A:671:GLU:OE1	6:A:918:MLI:C1	2.67	0.43
1:A:522[B]:ASP:OD1	7:A:1002:HOH:O	2.21	0.43
1:A:709:ASN:OD1	1:A:711:THR:HB	2.19	0.42
6:A:925:MLI:O8	6:A:925:MLI:O7	2.34	0.42
1:A:378:LEU:O	1:A:382:GLU:HB2	2.20	0.42
1:A:534:CYS:HA	7:A:1029:HOH:O	2.21	0.41
1:A:223:ALA:N	1:A:224:PRO:CD	2.84	0.40
1:A:779:PRO:O	1:A:783[A]:ARG:HD3	2.20	0.40

There are no symmetry-related clashes.

5.3 Torsion angles [i](#)

5.3.1 Protein backbone [i](#)

In the following table, the Percentiles column shows the percent Ramachandran outliers of the chain as a percentile score with respect to all X-ray entries followed by that with respect to entries of similar resolution.

The Analysed column shows the number of residues for which the backbone conformation was analysed, and the total number of residues.

Mol	Chain	Analysed	Favoured	Allowed	Outliers	Percentiles
1	A	872/866 (101%)	854 (98%)	18 (2%)	0	100 100

There are no Ramachandran outliers to report.

5.3.2 Protein sidechains [i](#)

In the following table, the Percentiles column shows the percent sidechain outliers of the chain as a percentile score with respect to all X-ray entries followed by that with respect to entries of similar resolution.

The Analysed column shows the number of residues for which the sidechain conformation was analysed, and the total number of residues.

Mol	Chain	Analysed	Rotameric	Outliers	Percentiles
1	A	748/740 (101%)	729 (98%)	19 (2%)	47 65

All (19) residues with a non-rotameric sidechain are listed below:

Mol	Chain	Res	Type
1	A	8	LYS
1	A	33	LYS
1	A	89	ARG
1	A	161	ARG
1	A	172	HIS
1	A	207	ARG
1	A	279	ARG
1	A	293	ARG
1	A	327	ASP
1	A	356	ASP
1	A	373	ASN
1	A	434	SER
1	A	438	ARG
1	A	505	PRO
1	A	535	GLU
1	A	559	ARG
1	A	699	LEU
1	A	775	THR
1	A	860	ASP

Sometimes sidechains can be flipped to improve hydrogen bonding and reduce clashes. All (2) such sidechains are listed below:

Mol	Chain	Res	Type
1	A	41	GLN
1	A	517	GLN

5.3.3 RNA [i](#)

There are no RNA molecules in this entry.

5.4 Non-standard residues in protein, DNA, RNA chains [i](#)

There are no non-standard protein/DNA/RNA residues in this entry.

5.5 Carbohydrates [i](#)

There are no monosaccharides in this entry.

5.6 Ligand geometry [i](#)

Of 27 ligands modelled in this entry, 6 are monoatomic - leaving 21 for Mogul analysis.

In the following table, the Counts columns list the number of bonds (or angles) for which Mogul statistics could be retrieved, the number of bonds (or angles) that are observed in the model and the number of bonds (or angles) that are defined in the Chemical Component Dictionary. The Link column lists molecule types, if any, to which the group is linked. The Z score for a bond length (or angle) is the number of standard deviations the observed value is removed from the expected value. A bond length (or angle) with $|Z| > 2$ is considered an outlier worth inspection. RMSZ is the root-mean-square of all Z scores of the bond lengths (or angles).

Mol	Type	Chain	Res	Link	Bond lengths			Bond angles		
					Counts	RMSZ	# Z > 2	Counts	RMSZ	# Z > 2
5	GOL	A	909	-	5,5,5	0.85	0	5,5,5	0.82	0
6	MLI	A	915	-	6,6,6	1.22	0	7,7,7	0.87	0
6	MLI	A	920	-	6,6,6	1.20	0	7,7,7	1.37	1 (14%)
5	GOL	A	912	-	5,5,5	0.62	0	5,5,5	0.55	0
6	MLI	A	923	-	6,6,6	1.21	0	7,7,7	2.17	5 (71%)
6	MLI	A	914	-	6,6,6	1.30	1 (16%)	7,7,7	1.15	0
5	GOL	A	908	-	5,5,5	0.36	0	5,5,5	0.73	0
5	GOL	A	913	-	5,5,5	0.47	0	5,5,5	0.88	0
3	BES	A	902	2	22,22,22	1.16	2 (9%)	27,29,29	1.47	3 (11%)
5	GOL	A	910	-	5,5,5	0.87	0	5,5,5	1.49	0
6	MLI	A	924	-	6,6,6	1.66	2 (33%)	7,7,7	1.55	2 (28%)
6	MLI	A	921	-	6,6,6	1.94	2 (33%)	7,7,7	2.33	4 (57%)
5	GOL	A	911	-	5,5,5	0.43	0	5,5,5	0.34	0
6	MLI	A	919[B]	-	6,6,6	1.15	0	7,7,7	1.50	2 (28%)
6	MLI	A	917	-	6,6,6	1.13	0	7,7,7	1.32	1 (14%)
6	MLI	A	922	-	6,6,6	1.92	3 (50%)	7,7,7	2.36	4 (57%)

Mol	Type	Chain	Res	Link	Bond lengths			Bond angles		
					Counts	RMSZ	# Z > 2	Counts	RMSZ	# Z > 2
6	MLI	A	926	4	6,6,6	1.24	0	7,7,7	0.80	0
6	MLI	A	919[A]	-	6,6,6	1.44	1 (16%)	7,7,7	1.30	1 (14%)
6	MLI	A	918	-	6,6,6	1.24	1 (16%)	7,7,7	2.17	3 (42%)
6	MLI	A	925	-	6,6,6	1.08	0	7,7,7	0.97	0
6	MLI	A	916	-	6,6,6	1.60	1 (16%)	7,7,7	1.17	0

In the following table, the Chirals column lists the number of chiral outliers, the number of chiral centers analysed, the number of these observed in the model and the number defined in the Chemical Component Dictionary. Similar counts are reported in the Torsion and Rings columns. '-' means no outliers of that kind were identified.

Mol	Type	Chain	Res	Link	Chirals	Torsions	Rings
5	GOL	A	909	-	-	0/4/4/4	-
6	MLI	A	915	-	-	4/4/4/4	-
6	MLI	A	920	-	-	3/4/4/4	-
5	GOL	A	912	-	-	0/4/4/4	-
6	MLI	A	923	-	-	2/4/4/4	-
6	MLI	A	914	-	-	2/4/4/4	-
5	GOL	A	908	-	-	2/4/4/4	-
5	GOL	A	913	-	-	4/4/4/4	-
3	BES	A	902	2	-	6/24/24/24	0/1/1/1
5	GOL	A	910	-	-	1/4/4/4	-
6	MLI	A	924	-	-	0/4/4/4	-
6	MLI	A	921	-	-	0/4/4/4	-
5	GOL	A	911	-	-	0/4/4/4	-
6	MLI	A	919[B]	-	-	0/4/4/4	-
6	MLI	A	917	-	-	2/4/4/4	-
6	MLI	A	922	-	-	0/4/4/4	-
6	MLI	A	926	4	-	4/4/4/4	-
6	MLI	A	919[A]	-	-	4/4/4/4	-
6	MLI	A	918	-	-	2/4/4/4	-
6	MLI	A	925	-	-	0/4/4/4	-
6	MLI	A	916	-	-	2/4/4/4	-

All (13) bond length outliers are listed below:

Mol	Chain	Res	Type	Atoms	Z	Observed(Å)	Ideal(Å)
6	A	921	MLI	C1-C3	3.64	1.56	1.51
6	A	922	MLI	C1-C3	3.15	1.55	1.51

Continued on next page...

Continued from previous page...

Mol	Chain	Res	Type	Atoms	Z	Observed(Å)	Ideal(Å)
6	A	924	MLI	O9-C3	-2.52	1.22	1.30
6	A	916	MLI	O6-C2	2.41	1.30	1.22
6	A	919[A]	MLI	O8-C3	2.38	1.30	1.22
6	A	918	MLI	C1-C2	-2.28	1.47	1.51
6	A	922	MLI	C1-C2	2.26	1.54	1.51
6	A	914	MLI	O8-C3	2.17	1.29	1.22
6	A	921	MLI	C1-C2	2.16	1.54	1.51
3	A	902	BES	C2-C3	-2.07	1.48	1.52
3	A	902	BES	C11-C12	2.06	1.43	1.38
6	A	922	MLI	O6-C2	2.04	1.28	1.22
6	A	924	MLI	O6-C2	2.02	1.28	1.22

All (26) bond angle outliers are listed below:

Mol	Chain	Res	Type	Atoms	Z	Observed(°)	Ideal(°)
3	A	902	BES	O2-C2-C3	-5.01	99.83	110.63
6	A	921	MLI	O9-C3-O8	-3.88	113.62	123.30
6	A	922	MLI	O6-C2-C1	-3.48	111.91	122.08
6	A	922	MLI	O9-C3-C1	3.35	125.24	114.54
6	A	918	MLI	O9-C3-C1	3.10	124.44	114.54
6	A	918	MLI	O6-C2-C1	-3.04	113.18	122.08
6	A	920	MLI	C3-C1-C2	-3.00	102.35	112.87
6	A	921	MLI	O9-C3-C1	2.94	123.92	114.54
6	A	923	MLI	O6-C2-C1	-2.89	113.63	122.08
6	A	918	MLI	O8-C3-C1	-2.86	113.71	122.08
6	A	923	MLI	O7-C2-O6	2.83	130.34	123.30
6	A	921	MLI	O7-C2-C1	2.78	123.42	114.54
6	A	924	MLI	C3-C1-C2	-2.70	103.40	112.87
3	A	902	BES	O1-C5-C4	2.70	122.36	113.40
6	A	923	MLI	O9-C3-C1	2.62	122.90	114.54
6	A	919[B]	MLI	O6-C2-C1	-2.61	114.45	122.08
6	A	919[A]	MLI	O8-C3-C1	-2.55	114.62	122.08
6	A	924	MLI	O7-C2-O6	2.50	129.52	123.30
6	A	922	MLI	O9-C3-O8	-2.40	117.32	123.30
6	A	921	MLI	O6-C2-C1	-2.36	115.18	122.08
6	A	917	MLI	O8-C3-C1	-2.31	115.33	122.08
6	A	922	MLI	O7-C2-C1	2.29	121.87	114.54
6	A	919[B]	MLI	O7-C2-C1	2.29	121.85	114.54
6	A	923	MLI	C3-C1-C2	-2.10	105.52	112.87
3	A	902	BES	O1-C5-O4	-2.06	119.40	124.09
6	A	923	MLI	O8-C3-C1	-2.06	116.06	122.08

There are no chirality outliers.

All (38) torsion outliers are listed below:

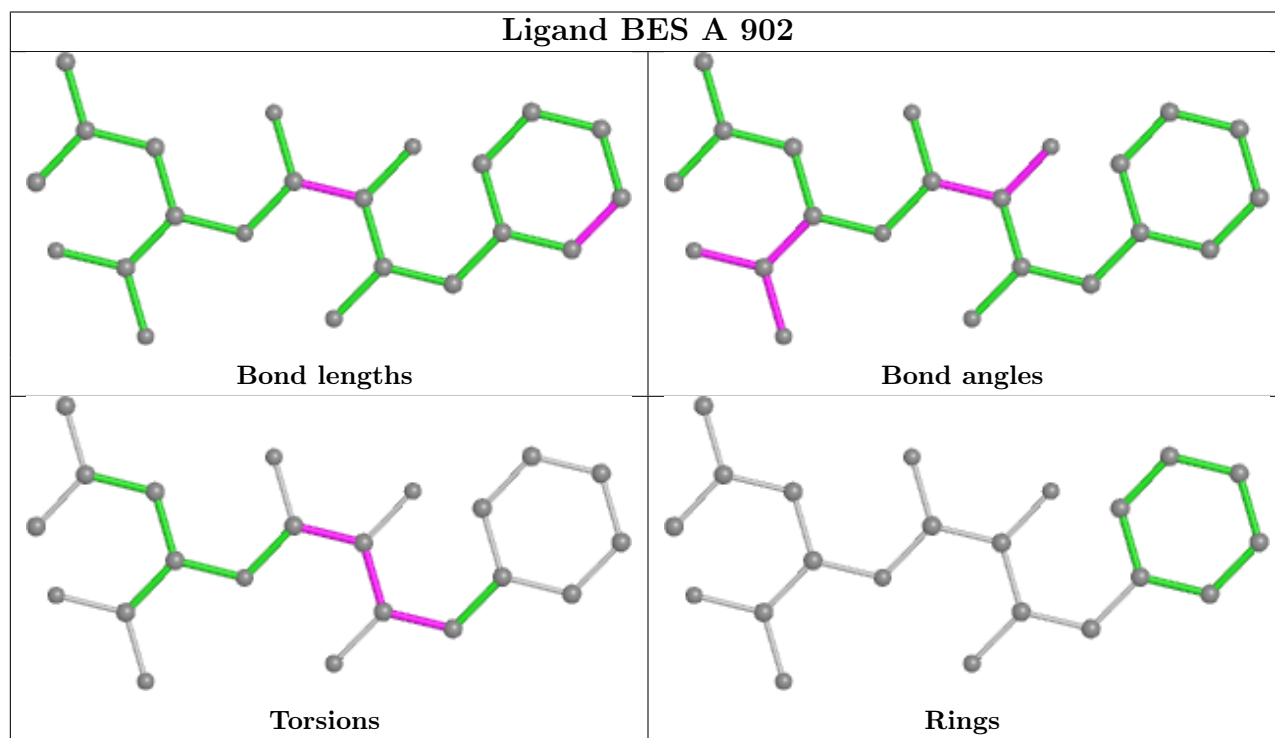
Mol	Chain	Res	Type	Atoms
3	A	902	BES	C2-C1-C6-C7
3	A	902	BES	N2-C1-C2-C3
3	A	902	BES	C6-C1-C2-C3
5	A	908	GOL	O1-C1-C2-C3
5	A	913	GOL	O1-C1-C2-C3
5	A	913	GOL	C1-C2-C3-O3
5	A	913	GOL	O1-C1-C2-O2
3	A	902	BES	N2-C1-C6-C7
6	A	917	MLI	C2-C1-C3-O9
5	A	908	GOL	O1-C1-C2-O2
6	A	926	MLI	C3-C1-C2-O7
3	A	902	BES	O2-C2-C3-N1
6	A	923	MLI	C3-C1-C2-O7
6	A	926	MLI	C2-C1-C3-O9
6	A	926	MLI	C3-C1-C2-O6
3	A	902	BES	O2-C2-C3-O3
6	A	915	MLI	C2-C1-C3-O9
6	A	918	MLI	C2-C1-C3-O8
6	A	918	MLI	C2-C1-C3-O9
6	A	919[A]	MLI	C3-C1-C2-O6
6	A	923	MLI	C3-C1-C2-O6
6	A	926	MLI	C2-C1-C3-O8
6	A	915	MLI	C2-C1-C3-O8
6	A	919[A]	MLI	C3-C1-C2-O7
5	A	910	GOL	C1-C2-C3-O3
5	A	913	GOL	O2-C2-C3-O3
6	A	914	MLI	C2-C1-C3-O8
6	A	917	MLI	C2-C1-C3-O8
6	A	920	MLI	C2-C1-C3-O9
6	A	919[A]	MLI	C2-C1-C3-O8
6	A	919[A]	MLI	C2-C1-C3-O9
6	A	920	MLI	C3-C1-C2-O7
6	A	916	MLI	C3-C1-C2-O6
6	A	914	MLI	C2-C1-C3-O9
6	A	920	MLI	C3-C1-C2-O6
6	A	915	MLI	C3-C1-C2-O6
6	A	915	MLI	C3-C1-C2-O7
6	A	916	MLI	C3-C1-C2-O7

There are no ring outliers.

8 monomers are involved in 9 short contacts:

Mol	Chain	Res	Type	Clashes	Symm-Clashes
6	A	915	MLI	2	0
6	A	920	MLI	1	0
5	A	912	GOL	1	0
5	A	910	GOL	1	0
6	A	922	MLI	1	0
6	A	926	MLI	1	0
6	A	918	MLI	1	0
6	A	925	MLI	1	0

The following is a two-dimensional graphical depiction of Mogul quality analysis of bond lengths, bond angles, torsion angles, and ring geometry for all instances of the Ligand of Interest. In addition, ligands with molecular weight > 250 and outliers as shown on the validation Tables will also be included. For torsion angles, if less than 5% of the Mogul distribution of torsion angles is within 10 degrees of the torsion angle in question, then that torsion angle is considered an outlier. Any bond that is central to one or more torsion angles identified as an outlier by Mogul will be highlighted in the graph. For rings, the root-mean-square deviation (RMSD) between the ring in question and similar rings identified by Mogul is calculated over all ring torsion angles. If the average RMSD is greater than 60 degrees and the minimal RMSD between the ring in question and any Mogul-identified rings is also greater than 60 degrees, then that ring is considered an outlier. The outliers are highlighted in purple. The color gray indicates Mogul did not find sufficient equivalents in the CSD to analyse the geometry.



5.7 Other polymers [i](#)

There are no such residues in this entry.

5.8 Polymer linkage issues [i](#)

There are no chain breaks in this entry.

6 Fit of model and data [i](#)

6.1 Protein, DNA and RNA chains [i](#)

In the following table, the column labelled '#RSRZ > 2' contains the number (and percentage) of RSRZ outliers, followed by percent RSRZ outliers for the chain as percentile scores relative to all X-ray entries and entries of similar resolution. The OWAB column contains the minimum, median, 95th percentile and maximum values of the occupancy-weighted average B-factor per residue. The column labelled 'Q < 0.9' lists the number of (and percentage) of residues with an average occupancy less than 0.9.

Mol	Chain	Analysed	<RSRZ>	#RSRZ>2	OWAB(Å ²)	Q<0.9
1	A	866/866 (100%)	-0.65	10 (1%) 79 83	14, 23, 40, 71	0

All (10) RSRZ outliers are listed below:

Mol	Chain	Res	Type	RSRZ
1	A	504	HIS	5.0
1	A	6	GLN	3.2
1	A	78	GLU	3.1
1	A	505	PRO	2.6
1	A	502	GLY	2.6
1	A	169	ASN	2.6
1	A	855	GLU	2.6
1	A	503	GLY	2.6
1	A	856	ASN	2.1
1	A	168	GLU	2.1

6.2 Non-standard residues in protein, DNA, RNA chains [i](#)

There are no non-standard protein/DNA/RNA residues in this entry.

6.3 Carbohydrates [i](#)

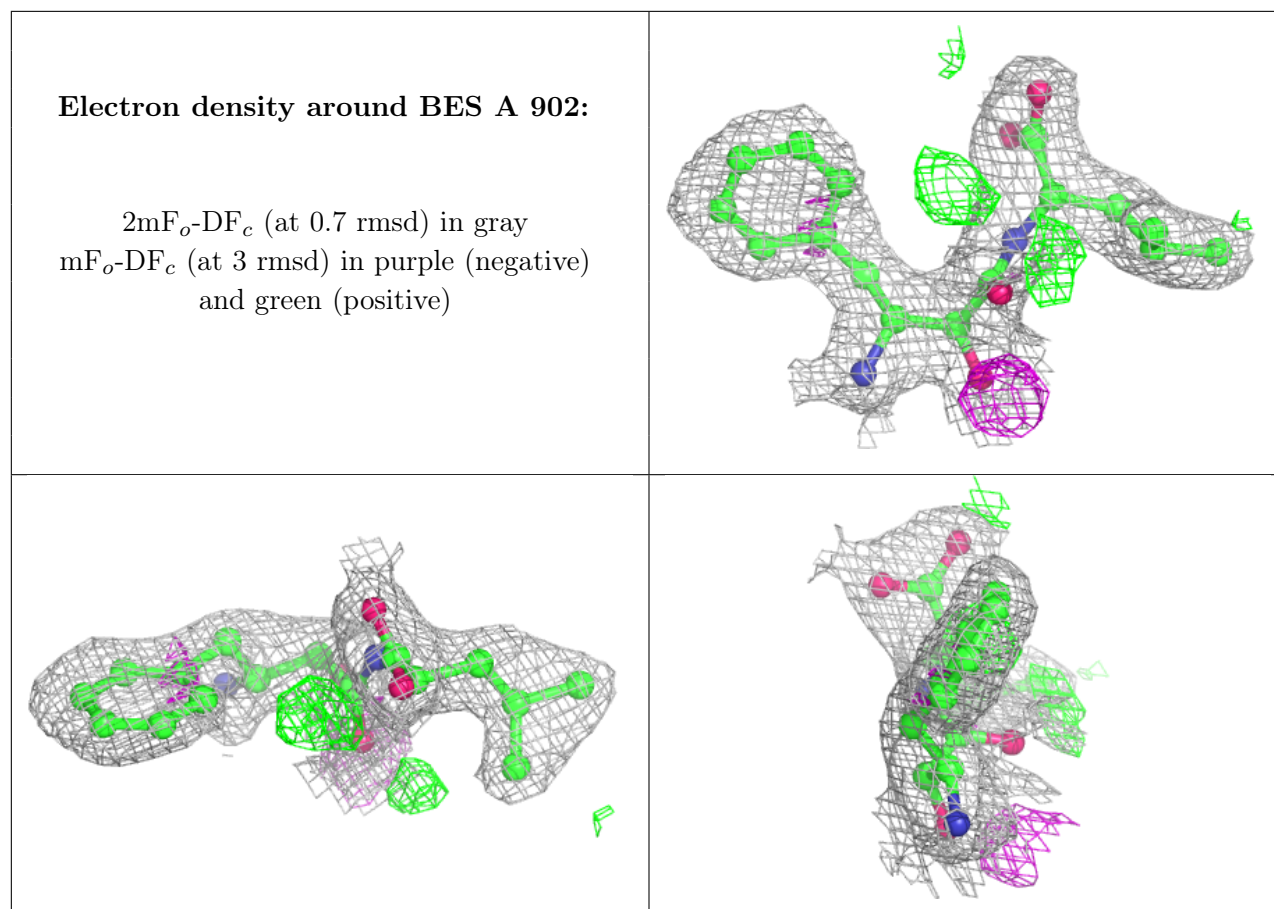
There are no monosaccharides in this entry.

6.4 Ligands [i](#)

In the following table, the Atoms column lists the number of modelled atoms in the group and the number defined in the chemical component dictionary. The B-factors column lists the minimum, median, 95th percentile and maximum values of B factors of atoms in the group. The column labelled 'Q < 0.9' lists the number of atoms with occupancy less than 0.9.

Mol	Type	Chain	Res	Atoms	RSCC	RSR	B-factors(\AA^2)	Q<0.9
6	MLI	A	919[A]	7/7	0.79	0.28	26,38,45,49	7
6	MLI	A	919[B]	7/7	0.79	0.28	30,35,37,37	7
6	MLI	A	926	7/7	0.82	0.23	59,72,76,79	0
5	GOL	A	913	6/6	0.85	0.30	46,53,55,56	0
6	MLI	A	922	7/7	0.86	0.32	32,59,71,98	0
6	MLI	A	921	7/7	0.86	0.24	49,62,71,83	0
6	MLI	A	916	7/7	0.87	0.21	60,63,69,75	0
6	MLI	A	923	7/7	0.88	0.18	45,58,64,76	0
6	MLI	A	920	7/7	0.89	0.20	58,64,70,75	0
6	MLI	A	917	7/7	0.90	0.28	37,51,59,64	0
6	MLI	A	925	7/7	0.91	0.17	57,59,63,74	0
6	MLI	A	918	7/7	0.91	0.18	39,46,58,59	0
5	GOL	A	910	6/6	0.92	0.18	37,41,49,52	0
5	GOL	A	912	6/6	0.93	0.12	25,37,38,49	0
6	MLI	A	924	7/7	0.93	0.14	36,47,53,67	0
3	BES	A	902	22/22	0.94	0.14	17,26,30,36	0
4	NA	A	904	1/1	0.94	0.18	36,36,36,36	0
5	GOL	A	908	6/6	0.94	0.13	36,44,46,54	0
6	MLI	A	915	7/7	0.94	0.13	53,54,57,65	0
6	MLI	A	914	7/7	0.95	0.14	43,51,54,66	0
5	GOL	A	909	6/6	0.95	0.09	19,24,26,27	0
5	GOL	A	911	6/6	0.96	0.10	35,38,41,41	0
4	NA	A	903	1/1	0.97	0.17	26,26,26,26	0
4	NA	A	907	1/1	0.97	0.08	29,29,29,29	0
4	NA	A	905	1/1	0.98	0.15	32,32,32,32	0
4	NA	A	906	1/1	0.99	0.05	24,24,24,24	0
2	ZN	A	901	1/1	1.00	0.01	15,15,15,15	0

The following is a graphical depiction of the model fit to experimental electron density of all instances of the Ligand of Interest. In addition, ligands with molecular weight > 250 and outliers as shown on the geometry validation Tables will also be included. Each fit is shown from different orientation to approximate a three-dimensional view.



6.5 Other polymers [i](#)

There are no such residues in this entry.