



Full wwPDB X-ray Structure Validation Report ⓘ

Jun 15, 2024 – 04:57 PM EDT

PDB ID : 4RUK
Title : crystal structure of Phosphoapantetheine adenylyltransferase PPAT/CoaD with CoA and pyrophosphate from Pseudomonas aeruginosa
Authors : Chatterjee, R.; Datta, S.
Deposited on : 2014-11-20
Resolution : 2.20 Å(reported)

This is a Full wwPDB X-ray Structure Validation Report for a publicly released PDB entry.

We welcome your comments at validation@mail.wwpdb.org

A user guide is available at

<https://www.wwpdb.org/validation/2017/XrayValidationReportHelp>

with specific help available everywhere you see the ⓘ symbol.

The types of validation reports are described at

<http://www.wwpdb.org/validation/2017/FAQs#types>.

The following versions of software and data (see [references ⓘ](#)) were used in the production of this report:

MolProbity : 4.02b-467
Mogul : 1.8.5 (274361), CSD as541be (2020)
Xtriage (Phenix) : 1.13
EDS : 2.37.1
buster-report : 1.1.7 (2018)
Percentile statistics : 20191225.v01 (using entries in the PDB archive December 25th 2019)
Refmac : 5.8.0158
CCP4 : 7.0.044 (Gargrove)
Ideal geometry (proteins) : Engh & Huber (2001)
Ideal geometry (DNA, RNA) : Parkinson et al. (1996)
Validation Pipeline (wwPDB-VP) : 2.37.1

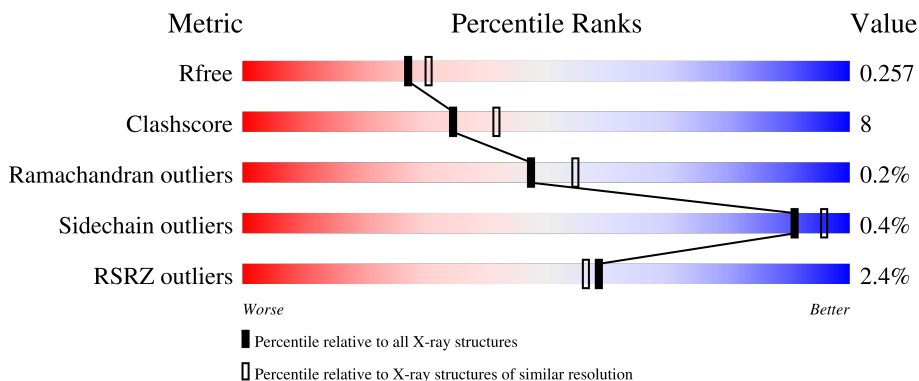
1 Overall quality at a glance

The following experimental techniques were used to determine the structure:

X-RAY DIFFRACTION

The reported resolution of this entry is 2.20 Å.

Percentile scores (ranging between 0-100) for global validation metrics of the entry are shown in the following graphic. The table shows the number of entries on which the scores are based.



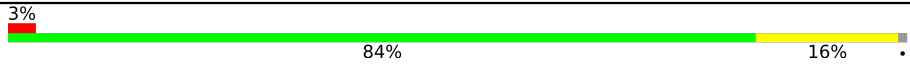
Metric	Whole archive (#Entries)	Similar resolution (#Entries, resolution range(Å))
R_{free}	130704	4898 (2.20-2.20)
Clashscore	141614	5594 (2.20-2.20)
Ramachandran outliers	138981	5503 (2.20-2.20)
Sidechain outliers	138945	5504 (2.20-2.20)
RSRZ outliers	127900	4800 (2.20-2.20)

The table below summarises the geometric issues observed across the polymeric chains and their fit to the electron density. The red, orange, yellow and green segments of the lower bar indicate the fraction of residues that contain outliers for ≥ 3 , 2, 1 and 0 types of geometric quality criteria respectively. A grey segment represents the fraction of residues that are not modelled. The numeric value for each fraction is indicated below the corresponding segment, with a dot representing fractions $\leq 5\%$. The upper red bar (where present) indicates the fraction of residues that have poor fit to the electron density. The numeric value is given above the bar.

Mol	Chain	Length	Quality of chain
1	A	159	 3% 84% 14% .
1	B	159	 3% 82% 18% .
1	C	159	 % 82% 16% ..
1	D	159	 3% 84% 16% .
1	E	159	 2% 91% 8% .

Continued on next page...

Continued from previous page...

Mol	Chain	Length	Quality of chain
1	F	159	 <p>A horizontal bar chart representing the quality of chain. The bar is divided into three segments: a small red segment on the left labeled '3%', a large green segment in the middle labeled '84%', and a yellow segment on the right labeled '16%'. A small grey dot is visible at the far right end of the bar.</p>

2 Entry composition [i](#)

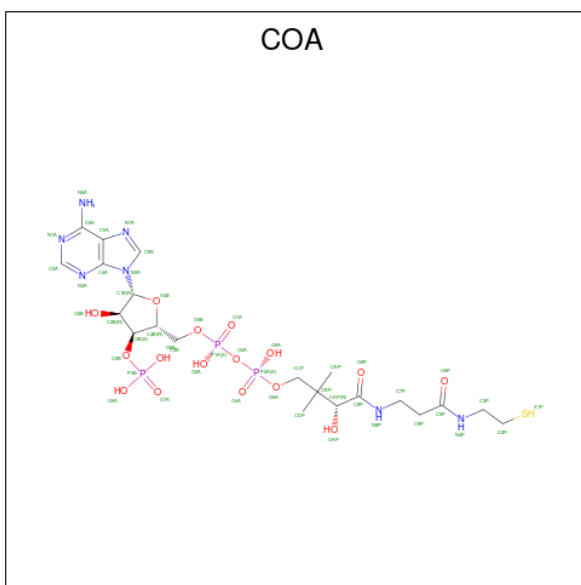
There are 9 unique types of molecules in this entry. The entry contains 8172 atoms, of which 0 are hydrogens and 0 are deuteriums.

In the tables below, the ZeroOcc column contains the number of atoms modelled with zero occupancy, the AltConf column contains the number of residues with at least one atom in alternate conformation and the Trace column contains the number of residues modelled with at most 2 atoms.

- Molecule 1 is a protein called Phosphopantetheine adenylyltransferase.

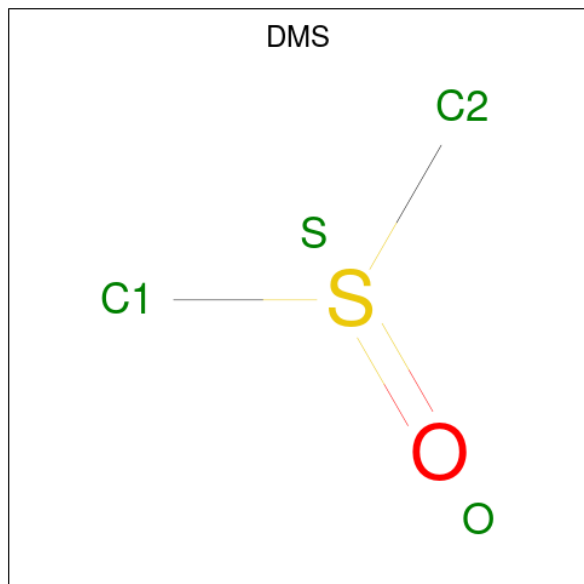
Mol	Chain	Residues	Atoms					ZeroOcc	AltConf	Trace
			Total	C	N	O	S			
1	A	157	Total 1247	C 802	N 218	O 225	S 2	0	1	0
1	B	158	Total 1255	C 807	N 219	O 226	S 3	0	1	0
1	C	158	Total 1261	C 810	N 220	O 228	S 3	0	2	0
1	D	158	Total 1255	C 807	N 219	O 226	S 3	0	1	0
1	E	158	Total 1263	C 812	N 220	O 227	S 4	0	2	0
1	F	158	Total 1244	C 801	N 215	O 225	S 3	0	0	0

- Molecule 2 is COENZYME A (three-letter code: COA) (formula: $C_{21}H_{36}N_7O_{16}P_3S$).



Mol	Chain	Residues	Atoms					ZeroOcc	AltConf	
2	A	1	Total	C	N	O	P	S	0	0
			48	21	7	16	3	1		
2	B	1	Total	C	N	O	P	S	0	0
			48	21	7	16	3	1		
2	C	1	Total	C	N	O	P	S	0	0
			48	21	7	16	3	1		
2	D	1	Total	C	N	O	P	S	0	0
			48	21	7	16	3	1		
2	E	1	Total	C	N	O	P	S	0	1
			96	42	14	32	6	2		
2	F	1	Total	C	N	O	P	S	0	1
			96	42	14	32	6	2		

- Molecule 3 is DIMETHYL SULFOXIDE (three-letter code: DMS) (formula: C₂H₆OS).



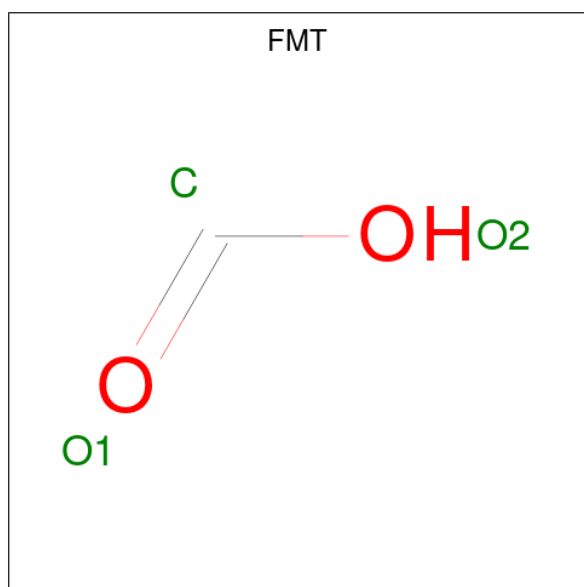
Mol	Chain	Residues	Atoms			ZeroOcc	AltConf	
3	A	1	Total	C	O	S	0	0
			4	2	1	1		
3	A	1	Total	C	O	S	0	0
			4	2	1	1		
3	A	1	Total	C	O	S	0	0
			4	2	1	1		
3	A	1	Total	C	O	S	0	0
			4	2	1	1		
3	D	1	Total	C	O	S	0	0
			4	2	1	1		
3	D	1	Total	C	O	S	0	0
			4	2	1	1		

Continued on next page...

Continued from previous page...

Mol	Chain	Residues	Atoms				ZeroOcc	AltConf
3	E	1	Total	C	O	S	0	0
			4	2	1	1		
3	F	1	Total	C	O	S	0	0
			4	2	1	1		
3	F	1	Total	C	O	S	0	0
			4	2	1	1		

- Molecule 4 is FORMIC ACID (three-letter code: FMT) (formula: CH₂O₂).



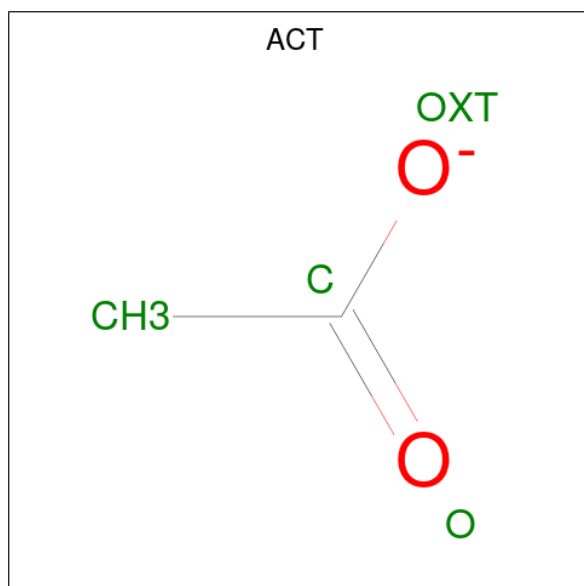
Mol	Chain	Residues	Atoms			ZeroOcc	AltConf
4	A	1	Total	C	O	0	0
			3	1	2		
4	A	1	Total	C	O	0	0
			3	1	2		
4	B	1	Total	C	O	0	0
			3	1	2		
4	B	1	Total	C	O	0	0
			3	1	2		
4	B	1	Total	C	O	0	0
			3	1	2		
4	B	1	Total	C	O	0	0
			3	1	2		
4	B	1	Total	C	O	0	0
			3	1	2		

Continued on next page...

Continued from previous page...

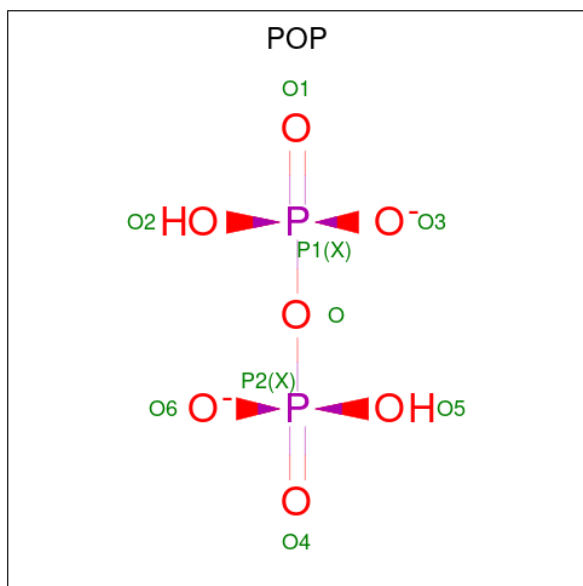
Mol	Chain	Residues	Atoms	ZeroOcc	AltConf
4	C	1	Total C O 3 1 2	0	0
4	C	1	Total C O 3 1 2	0	0
4	C	1	Total C O 3 1 2	0	0
4	C	1	Total C O 3 1 2	0	0
4	D	1	Total C O 3 1 2	0	0
4	E	1	Total C O 3 1 2	0	0
4	E	1	Total C O 3 1 2	0	0

- Molecule 5 is ACETATE ION (three-letter code: ACT) (formula: C₂H₃O₂).



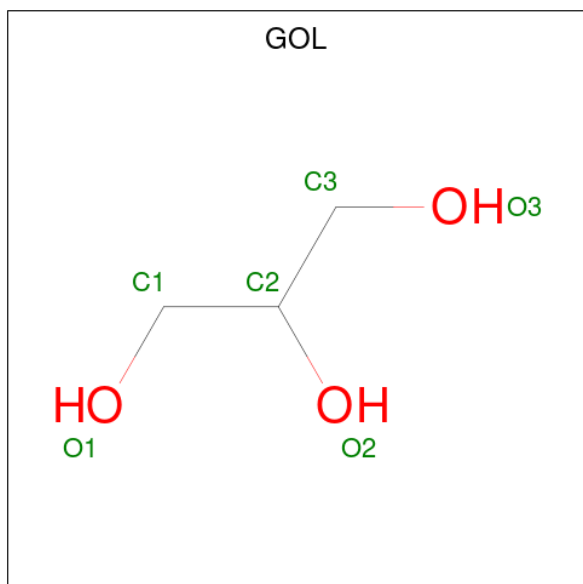
Mol	Chain	Residues	Atoms	ZeroOcc	AltConf
5	A	1	Total C O 4 2 2	0	0
5	C	1	Total C O 4 2 2	0	0
5	E	1	Total C O 4 2 2	0	0
5	F	1	Total C O 4 2 2	0	0

- Molecule 6 is PYROPHOSPHATE 2- (three-letter code: POP) (formula: $\text{H}_2\text{O}_7\text{P}_2$).



Mol	Chain	Residues	Atoms	ZeroOcc	AltConf
6	D	1	Total O P 9 7 2	0	0
6	F	1	Total O P 9 7 2	0	0

- Molecule 7 is GLYCEROL (three-letter code: GOL) (formula: $\text{C}_3\text{H}_8\text{O}_3$).



Mol	Chain	Residues	Atoms	ZeroOcc	AltConf
7	D	1	Total C O 6 3 3	0	0

- Molecule 8 is CALCIUM ION (three-letter code: CA) (formula: Ca).

Mol	Chain	Residues	Atoms	ZeroOcc	AltConf
8	E	1	Total Ca 1 1	0	0
8	F	1	Total Ca 1 1	0	0

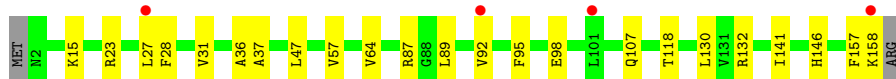
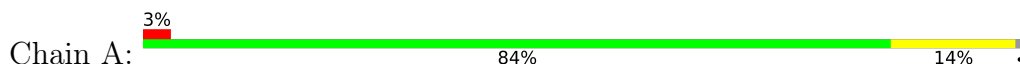
- Molecule 9 is water.

Mol	Chain	Residues	Atoms	ZeroOcc	AltConf
9	A	25	Total O 25 25	0	0
9	B	24	Total O 24 24	0	0
9	C	25	Total O 25 25	0	0
9	D	24	Total O 24 24	0	0
9	E	19	Total O 19 19	0	0
9	F	23	Total O 23 23	0	0

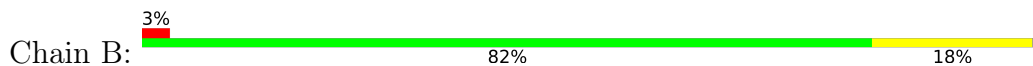
3 Residue-property plots [i](#)

These plots are drawn for all protein, RNA, DNA and oligosaccharide chains in the entry. The first graphic for a chain summarises the proportions of the various outlier classes displayed in the second graphic. The second graphic shows the sequence view annotated by issues in geometry and electron density. Residues are color-coded according to the number of geometric quality criteria for which they contain at least one outlier: green = 0, yellow = 1, orange = 2 and red = 3 or more. A red dot above a residue indicates a poor fit to the electron density ($RSRZ > 2$). Stretches of 2 or more consecutive residues without any outlier are shown as a green connector. Residues present in the sample, but not in the model, are shown in grey.

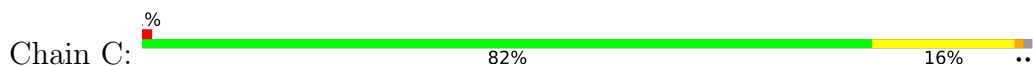
- Molecule 1: Phosphopantetheine adenylyltransferase



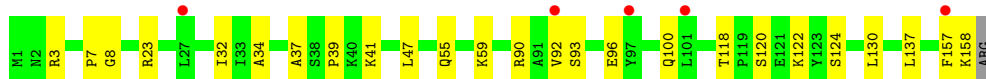
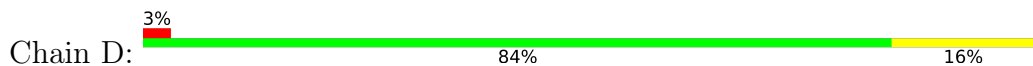
- Molecule 1: Phosphopantetheine adenylyltransferase



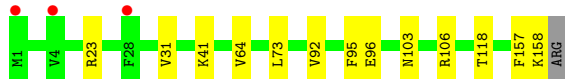
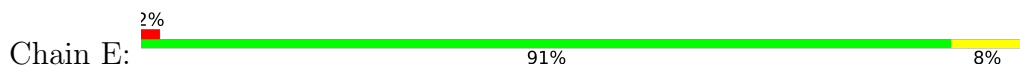
- Molecule 1: Phosphopantetheine adenylyltransferase



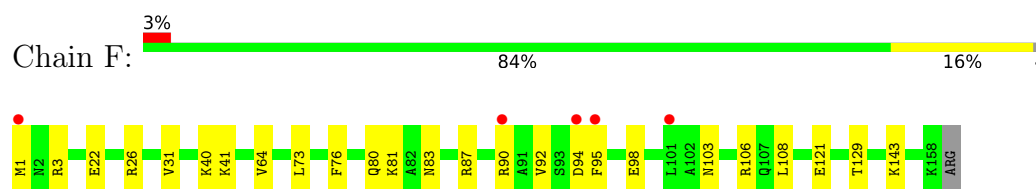
- Molecule 1: Phosphopantetheine adenylyltransferase



- Molecule 1: Phosphopantetheine adenylyltransferase



- Molecule 1: Phosphopantetheine adenylyltransferase



4 Data and refinement statistics

Property	Value	Source
Space group	P 1 21 1	Depositor
Cell constants a, b, c, α , β , γ	79.60Å 89.48Å 79.62Å 90.00° 97.93° 90.00°	Depositor
Resolution (Å)	45.13 – 2.20 45.13 – 2.20	Depositor EDS
% Data completeness (in resolution range)	96.6 (45.13-2.20) 89.7 (45.13-2.20)	Depositor EDS
R_{merge}	(Not available)	Depositor
R_{sym}	(Not available)	Depositor
$\langle I/\sigma(I) \rangle$ ¹	0.99 (at 2.20Å)	Xtrriage
Refinement program	PHENIX (phenix.refine: 1.8.4_1496)	Depositor
R, R_{free}	0.204 , 0.254 0.211 , 0.257	Depositor DCC
R_{free} test set	2003 reflections (3.69%)	wwPDB-VP
Wilson B-factor (Å ²)	35.5	Xtrriage
Anisotropy	0.028	Xtrriage
Bulk solvent k_{sol} (e/Å ³), B_{sol} (Å ²)	0.37 , 32.4	EDS
L-test for twinning ²	$\langle L \rangle = 0.49$, $\langle L^2 \rangle = 0.32$	Xtrriage
Estimated twinning fraction	0.468 for l,-k,h	Xtrriage
F_o, F_c correlation	0.94	EDS
Total number of atoms	8172	wwPDB-VP
Average B, all atoms (Å ²)	44.0	wwPDB-VP

Xtrriage's analysis on translational NCS is as follows: *The largest off-origin peak in the Patterson function is 5.20% of the height of the origin peak. No significant pseudotranslation is detected.*

¹Intensities estimated from amplitudes.

²Theoretical values of $\langle |L| \rangle$, $\langle L^2 \rangle$ for acentric reflections are 0.5, 0.333 respectively for untwinned datasets, and 0.375, 0.2 for perfectly twinned datasets.

5 Model quality i

5.1 Standard geometry i

Bond lengths and bond angles in the following residue types are not validated in this section: DMS, FMT, POP, ACT, CA, GOL, COA

The Z score for a bond length (or angle) is the number of standard deviations the observed value is removed from the expected value. A bond length (or angle) with $|Z| > 5$ is considered an outlier worth inspection. RMSZ is the root-mean-square of all Z scores of the bond lengths (or angles).

Mol	Chain	Bond lengths		Bond angles	
		RMSZ	# Z >5	RMSZ	# Z >5
1	A	0.48	0/1274	0.62	0/1724
1	B	0.51	0/1282	0.64	1/1734 (0.1%)
1	C	0.45	0/1288	0.60	0/1742
1	D	0.44	0/1282	0.56	0/1734
1	E	0.45	0/1290	0.62	0/1744
1	F	0.43	0/1271	0.58	0/1720
All	All	0.46	0/7687	0.60	1/10398 (0.0%)

There are no bond length outliers.

All (1) bond angle outliers are listed below:

Mol	Chain	Res	Type	Atoms	Z	Observed(°)	Ideal(°)
1	B	122	LYS	CA-CB-CG	5.03	124.47	113.40

There are no chirality outliers.

There are no planarity outliers.

5.2 Too-close contacts i

In the following table, the Non-H and H(model) columns list the number of non-hydrogen atoms and hydrogen atoms in the chain respectively. The H(added) column lists the number of hydrogen atoms added and optimized by MolProbity. The Clashes column lists the number of clashes within the asymmetric unit, whereas Symm-Clashes lists symmetry-related clashes.

Mol	Chain	Non-H	H(model)	H(added)	Clashes	Symm-Clashes
1	A	1247	0	1261	20	0
1	B	1255	0	1273	26	0
1	C	1261	0	1277	24	0
1	D	1255	0	1273	24	0

Continued on next page...

Continued from previous page...

Mol	Chain	Non-H	H(model)	H(added)	Clashes	Symm-Clashes
1	E	1263	0	1283	19	0
1	F	1244	0	1261	23	0
2	A	48	0	30	8	0
2	B	48	0	32	5	0
2	C	48	0	31	5	0
2	D	48	0	32	4	0
2	E	96	0	64	14	0
2	F	96	0	64	9	0
3	A	16	0	24	5	0
3	D	8	0	12	1	0
3	E	4	0	6	0	0
3	F	8	0	12	1	0
4	A	6	0	2	0	0
4	B	18	0	6	2	0
4	C	12	0	4	0	0
4	D	3	0	1	0	0
4	E	6	0	2	0	0
5	A	4	0	3	0	0
5	C	4	0	3	0	0
5	E	4	0	3	0	0
5	F	4	0	3	0	0
6	D	9	0	0	0	0
6	F	9	0	0	0	0
7	D	6	0	8	1	0
8	E	1	0	0	0	0
8	F	1	0	0	0	0
9	A	25	0	0	0	0
9	B	24	0	0	0	0
9	C	25	0	0	2	0
9	D	24	0	0	0	0
9	E	19	0	0	0	0
9	F	23	0	0	1	0
All	All	8172	0	7970	133	0

The all-atom clashscore is defined as the number of clashes found per 1000 atoms (including hydrogen atoms). The all-atom clashscore for this structure is 8.

All (133) close contacts within the same asymmetric unit are listed below, sorted by their clash magnitude.

Atom-1	Atom-2	Interatomic distance (Å)	Clash overlap (Å)
2:C:201:COA:C1B	2:C:201:COA:O4B	1.63	1.27

Continued on next page...

Continued from previous page...

Atom-1	Atom-2	Interatomic distance (Å)	Clash overlap (Å)
2:F:201[A]:COA:O4B	2:F:201[A]:COA:C1B	1.64	1.24
2:B:201:COA:C1B	2:B:201:COA:O4B	1.63	1.23
2:E:202[A]:COA:C1B	2:E:202[A]:COA:O4B	1.64	1.23
2:F:201[B]:COA:O4B	2:F:201[B]:COA:C1B	1.64	1.21
2:E:202[B]:COA:O4B	2:E:202[B]:COA:C1B	1.64	1.20
2:D:201:COA:O4B	2:D:201:COA:C1B	1.63	1.16
2:A:201:COA:H8A	2:A:201:COA:H51A	1.53	0.90
1:F:73:LEU:HB2	2:F:201[A]:COA:H61	1.54	0.89
1:D:37:ALA:O	1:D:39:PRO:HD3	1.87	0.75
2:B:201:COA:H141	2:B:201:COA:H72	1.68	0.74
1:C:73:LEU:N	2:C:201:COA:O5P	2.22	0.70
1:B:96:GLU:OE2	1:E:92:VAL:HG22	1.91	0.70
1:C:55:GLN:NE2	9:C:303:HOH:O	2.25	0.68
1:B:65:GLU:HB2	4:B:205:FMT:H	1.77	0.66
1:F:41:LYS:NZ	2:F:201[A]:COA:O4A	2.28	0.66
1:C:124[B]:SER:O	1:C:126:ILE:N	2.28	0.66
1:E:41:LYS:NZ	2:E:202[A]:COA:O4A	2.30	0.65
1:C:124[A]:SER:O	1:C:126:ILE:N	2.30	0.64
1:F:41:LYS:NZ	2:F:201[B]:COA:O3A	2.32	0.63
2:A:201:COA:H8A	2:A:201:COA:C5B	2.27	0.62
1:E:103:ASN:OD1	1:E:106[B]:ARG:NH1	2.32	0.62
1:B:87:ARG:NH2	1:B:98:GLU:OE2	2.32	0.61
1:C:41:LYS:O	1:C:43:PRO:HD3	2.01	0.61
1:B:103:ASN:ND2	1:F:121:GLU:HB3	2.15	0.61
1:F:1:MET:O	1:F:1:MET:HG2	2.03	0.59
1:F:73:LEU:HB3	2:F:201[B]:COA:HN4	1.68	0.59
1:E:73:LEU:HB2	2:E:202[A]:COA:H72	1.85	0.59
1:B:103:ASN:HD21	1:F:121:GLU:HB3	1.68	0.59
1:A:157:PHE:O	1:A:158:LYS:HB3	2.03	0.58
1:E:41:LYS:NZ	2:E:202[B]:COA:O3A	2.35	0.58
1:D:37:ALA:HB2	1:D:47:LEU:HD22	1.84	0.58
1:C:15:LYS:NZ	9:C:315:HOH:O	2.37	0.57
1:A:132:ARG:NH2	2:A:201:COA:H2A	2.19	0.57
1:B:157:PHE:O	1:B:158:LYS:HB3	2.03	0.57
1:A:92:VAL:HB	1:E:92:VAL:HB	1.87	0.57
1:A:36:ALA:HB1	3:A:204:DMS:H21	1.87	0.56
1:A:31:VAL:HB	1:A:64:VAL:HG22	1.88	0.56
1:D:41:LYS:O	7:D:206:GOL:H32	2.06	0.56
1:E:157:PHE:O	1:E:158:LYS:HB3	2.06	0.56
1:D:130:LEU:HD22	2:E:202[B]:COA:S1P	2.46	0.56
1:E:31:VAL:HB	1:E:64:VAL:HG22	1.89	0.55

Continued on next page...

Continued from previous page...

Atom-1	Atom-2	Interatomic distance (Å)	Clash overlap (Å)
1:C:103:ASN:OD1	1:C:106[B]:ARG:NH1	2.40	0.55
1:A:15:LYS:HG2	3:A:202:DMS:H22	1.89	0.55
1:F:31:VAL:HB	1:F:64:VAL:HG22	1.88	0.55
1:E:73:LEU:H	2:E:202[B]:COA:H61	1.73	0.54
1:A:92:VAL:HG22	1:C:96:GLU:OE2	2.06	0.54
1:A:57:VAL:HG22	1:A:146:HIS:CG	2.42	0.54
1:A:95:PHE:HD2	1:E:92:VAL:HG12	1.73	0.54
1:C:41:LYS:NZ	2:C:201:COA:O4B	2.39	0.54
1:C:157:PHE:O	1:C:158:LYS:HB3	2.08	0.53
1:B:31:VAL:HB	1:B:64:VAL:HG22	1.90	0.53
1:C:92:VAL:HG12	1:D:92:VAL:HB	1.91	0.53
1:A:107:GLN:HB3	1:F:143:LYS:HD2	1.91	0.53
1:A:37:ALA:HB2	1:A:47:LEU:HD22	1.91	0.53
1:D:122:LYS:O	1:D:122:LYS:HD2	2.09	0.52
1:F:41:LYS:HZ1	2:F:201[B]:COA:P2A	2.33	0.52
1:A:27:LEU:HD22	1:A:28:PHE:CE1	2.45	0.51
1:B:92:VAL:HG22	1:D:96:GLU:OE2	2.11	0.51
1:B:57:VAL:HG22	1:B:146:HIS:CG	2.46	0.50
2:A:201:COA:HN8	3:A:204:DMS:H22	1.76	0.50
1:A:37:ALA:O	3:A:204:DMS:S	2.70	0.50
1:B:23:ARG:NH2	1:B:118:THR:O	2.42	0.49
1:A:87:ARG:NH2	1:A:98:GLU:OE2	2.44	0.49
1:D:92:VAL:HG22	1:E:96:GLU:OE2	2.13	0.49
1:B:118:THR:HG22	9:F:302:HOH:O	2.12	0.48
1:B:125:PHE:O	1:D:100:GLN:HG3	2.13	0.48
1:F:83:ASN:HB2	3:F:204:DMS:H22	1.95	0.48
1:D:90:ARG:HD2	1:D:124:SER:O	2.13	0.48
1:F:87:ARG:NH1	2:F:201[B]:COA:H132	2.29	0.48
1:C:92:VAL:CG1	1:D:92:VAL:HB	2.44	0.47
1:C:130:LEU:HA	1:C:130:LEU:HD23	1.77	0.47
1:A:92:VAL:HG12	1:E:95:PHE:HD2	1.79	0.47
1:D:157:PHE:O	1:D:158:LYS:HB2	2.14	0.47
1:F:73:LEU:H	2:F:201[B]:COA:H61	1.80	0.47
1:B:92:VAL:N	1:D:96:GLU:OE2	2.47	0.47
1:D:8:GLY:HA2	2:D:201:COA:O1A	2.14	0.47
2:D:201:COA:H121	2:D:201:COA:P1A	2.56	0.46
2:A:201:COA:O4A	2:A:201:COA:OAP	2.33	0.46
1:A:130:LEU:HD23	1:A:130:LEU:HA	1.79	0.46
1:D:37:ALA:O	3:D:203:DMS:S	2.74	0.46
1:F:22:GLU:O	1:F:26:ARG:NH1	2.49	0.45
1:A:23:ARG:HH12	1:E:106[B]:ARG:HD3	1.82	0.45

Continued on next page...

Continued from previous page...

Atom-1	Atom-2	Interatomic distance (Å)	Clash overlap (Å)
2:A:201:COA:H141	2:A:201:COA:N8P	2.32	0.45
2:E:202[A]:COA:H61	2:E:202[A]:COA:H32	1.67	0.45
1:D:93:SER:N	1:E:96:GLU:OE2	2.49	0.45
1:C:31:VAL:HB	1:C:64:VAL:HG22	1.98	0.44
1:E:41:LYS:HZ1	2:E:202[B]:COA:P2A	2.40	0.44
1:B:27:LEU:HD22	1:B:28:PHE:CE1	2.52	0.44
2:B:201:COA:O4B	2:B:201:COA:N9A	2.40	0.44
1:D:3:ARG:HD3	1:D:32:ILE:HD11	1.99	0.44
1:D:130:LEU:HD23	1:D:130:LEU:HA	1.87	0.44
1:E:41:LYS:NZ	2:E:202[B]:COA:H51A	2.33	0.44
1:C:12:PRO:HG3	1:C:153:LEU:HD21	2.00	0.44
1:E:41:LYS:NZ	2:E:202[A]:COA:H142	2.33	0.44
1:C:106[B]:ARG:NH1	1:D:120:SER:HA	2.32	0.44
2:D:201:COA:O1A	2:D:201:COA:H121	2.17	0.44
1:B:29:ASP:O	1:B:63:ASN:HB2	2.18	0.43
1:B:120:SER:HA	1:F:106:ARG:NH1	2.33	0.43
1:C:45:PHE:HB2	1:C:50:ARG:HG3	2.00	0.43
1:C:73:LEU:HB2	2:C:201:COA:H71	1.99	0.43
1:B:68:GLY:H	4:B:204:FMT:C	2.30	0.43
1:B:87:ARG:HH22	2:B:201:COA:P2A	2.41	0.43
1:C:4:VAL:CG1	1:C:31:VAL:HG22	2.49	0.43
1:A:141:ILE:HG13	3:A:203:DMS:O	2.19	0.43
2:A:201:COA:O1A	2:A:201:COA:H4B	2.19	0.43
1:E:73:LEU:HB3	2:E:202[B]:COA:HN4	1.84	0.42
2:A:201:COA:H32	2:A:201:COA:H62	1.82	0.42
1:B:111:ASP:OD1	1:B:111:ASP:N	2.51	0.42
1:D:3:ARG:HD3	1:D:32:ILE:CD1	2.50	0.42
1:D:7:PRO:HA	1:D:34:ALA:O	2.20	0.42
1:A:89:LEU:O	1:A:118:THR:HG22	2.18	0.42
1:F:76:PHE:O	1:F:80:GLN:HG2	2.19	0.42
1:D:23:ARG:NH2	1:D:118:THR:O	2.43	0.42
1:B:87:ARG:HE	1:B:98:GLU:CD	2.22	0.42
1:C:7:PRO:HA	1:C:34:ALA:O	2.20	0.42
1:C:23:ARG:NH2	1:C:119:PRO:HA	2.35	0.41
1:B:33:ILE:HD11	1:B:58:THR:HG21	2.01	0.41
1:B:92:VAL:HB	1:F:92:VAL:HB	2.02	0.41
1:A:92:VAL:N	1:C:96:GLU:OE2	2.53	0.41
1:E:23:ARG:NH2	1:E:118:THR:O	2.39	0.41
1:B:89:LEU:HB3	1:F:95:PHE:CE1	2.56	0.41
2:E:202[B]:COA:H8A	2:E:202[B]:COA:H2B	1.93	0.41
1:C:72:LEU:HD12	2:C:201:COA:C5P	2.51	0.41

Continued on next page...

Continued from previous page...

Atom-1	Atom-2	Interatomic distance (Å)	Clash overlap (Å)
1:D:137:LEU:CD1	2:E:202[B]:COA:H62	2.50	0.41
1:F:3:ARG:NH1	1:F:81:LYS:O	2.50	0.41
1:F:40:LYS:HD3	1:F:40:LYS:HA	1.83	0.41
1:D:55:GLN:O	1:D:59:LYS:HG3	2.20	0.41
1:B:121:GLU:HB3	1:F:103:ASN:ND2	2.36	0.40
1:F:94:ASP:O	1:F:98:GLU:HG2	2.20	0.40
1:C:134:ILE:HD13	1:F:108:LEU:HD11	2.02	0.40
1:B:4:VAL:CG1	1:B:31:VAL:HG22	2.51	0.40
1:B:87:ARG:NH1	2:B:201:COA:O5A	2.54	0.40

There are no symmetry-related clashes.

5.3 Torsion angles [i](#)

5.3.1 Protein backbone [i](#)

In the following table, the Percentiles column shows the percent Ramachandran outliers of the chain as a percentile score with respect to all X-ray entries followed by that with respect to entries of similar resolution.

The Analysed column shows the number of residues for which the backbone conformation was analysed, and the total number of residues.

Mol	Chain	Analysed	Favoured	Allowed	Outliers	Percentiles	
1	A	156/159 (98%)	152 (97%)	4 (3%)	0	100	100
1	B	157/159 (99%)	156 (99%)	1 (1%)	0	100	100
1	C	158/159 (99%)	154 (98%)	1 (1%)	3 (2%)	8	5
1	D	157/159 (99%)	153 (98%)	4 (2%)	0	100	100
1	E	157/159 (99%)	155 (99%)	2 (1%)	0	100	100
1	F	156/159 (98%)	154 (99%)	2 (1%)	0	100	100
All	All	941/954 (99%)	924 (98%)	14 (2%)	3 (0%)	47	46

All (3) Ramachandran outliers are listed below:

Mol	Chain	Res	Type
1	C	125	PHE
1	C	124[A]	SER
1	C	124[B]	SER

5.3.2 Protein sidechains [i](#)

In the following table, the Percentiles column shows the percent sidechain outliers of the chain as a percentile score with respect to all X-ray entries followed by that with respect to entries of similar resolution.

The Analysed column shows the number of residues for which the sidechain conformation was analysed, and the total number of residues.

Mol	Chain	Analysed	Rotameric	Outliers	Percentiles	
1	A	134/135 (99%)	134 (100%)	0	100	100
1	B	135/135 (100%)	135 (100%)	0	100	100
1	C	136/135 (101%)	135 (99%)	1 (1%)	84	91
1	D	135/135 (100%)	135 (100%)	0	100	100
1	E	136/135 (101%)	136 (100%)	0	100	100
1	F	134/135 (99%)	132 (98%)	2 (2%)	65	78
All	All	810/810 (100%)	807 (100%)	3 (0%)	91	96

All (3) residues with a non-rotameric sidechain are listed below:

Mol	Chain	Res	Type
1	C	158	LYS
1	F	90	ARG
1	F	129	THR

Sometimes sidechains can be flipped to improve hydrogen bonding and reduce clashes. All (1) such sidechains are listed below:

Mol	Chain	Res	Type
1	B	103	ASN

5.3.3 RNA [i](#)

There are no RNA molecules in this entry.

5.4 Non-standard residues in protein, DNA, RNA chains [i](#)

There are no non-standard protein/DNA/RNA residues in this entry.

5.5 Carbohydrates [i](#)

There are no monosaccharides in this entry.

5.6 Ligand geometry [i](#)

Of 41 ligands modelled in this entry, 2 are monoatomic - leaving 39 for Mogul analysis.

In the following table, the Counts columns list the number of bonds (or angles) for which Mogul statistics could be retrieved, the number of bonds (or angles) that are observed in the model and the number of bonds (or angles) that are defined in the Chemical Component Dictionary. The Link column lists molecule types, if any, to which the group is linked. The Z score for a bond length (or angle) is the number of standard deviations the observed value is removed from the expected value. A bond length (or angle) with $|Z| > 2$ is considered an outlier worth inspection. RMSZ is the root-mean-square of all Z scores of the bond lengths (or angles).

Mol	Type	Chain	Res	Link	Bond lengths			Bond angles		
					Counts	RMSZ	# Z > 2	Counts	RMSZ	# Z > 2
5	ACT	A	208	-	3,3,3	0.98	0	3,3,3	1.13	0
3	DMS	D	203	-	3,3,3	0.67	0	3,3,3	0.82	0
4	FMT	E	205	-	2,2,2	0.71	0	1,1,1	0.30	0
4	FMT	C	204	-	2,2,2	0.70	0	1,1,1	0.27	0
5	ACT	C	206	-	3,3,3	0.84	0	3,3,3	1.42	0
3	DMS	A	204	-	3,3,3	0.67	0	3,3,3	0.90	0
4	FMT	B	207	-	2,2,2	0.67	0	1,1,1	0.20	0
4	FMT	B	206	-	2,2,2	0.67	0	1,1,1	0.15	0
5	ACT	E	206	-	3,3,3	0.73	0	3,3,3	1.51	0
7	GOL	D	206	-	5,5,5	0.34	0	5,5,5	0.39	0
4	FMT	B	203	-	2,2,2	0.68	0	1,1,1	0.25	0
4	FMT	C	202	-	2,2,2	0.67	0	1,1,1	0.26	0
3	DMS	E	204	-	3,3,3	0.66	0	3,3,3	0.34	0
4	FMT	A	206	-	2,2,2	0.67	0	1,1,1	0.12	0
2	COA	A	201	-	41,50,50	3.75	8 (19%)	52,75,75	2.41	9 (17%)
2	COA	F	201[B]	8	41,50,50	3.97	12 (29%)	52,75,75	2.11	7 (13%)
2	COA	E	202[B]	8	41,50,50	3.98	11 (26%)	52,75,75	2.06	7 (13%)
2	COA	B	201	-	41,50,50	3.92	11 (26%)	52,75,75	2.29	12 (23%)
4	FMT	B	205	-	2,2,2	0.64	0	1,1,1	0.22	0
5	ACT	F	206	-	3,3,3	0.71	0	3,3,3	1.35	0
2	COA	F	201[A]	8	41,50,50	3.99	11 (26%)	52,75,75	2.01	6 (11%)
2	COA	E	202[A]	8	41,50,50	4.02	12 (29%)	52,75,75	2.04	6 (11%)
3	DMS	F	204	-	3,3,3	0.69	0	3,3,3	0.61	0
4	FMT	C	203	-	2,2,2	0.77	0	1,1,1	0.42	0
4	FMT	D	205	-	2,2,2	0.69	0	1,1,1	0.23	0
3	DMS	A	203	-	3,3,3	0.67	0	3,3,3	1.12	0

Mol	Type	Chain	Res	Link	Bond lengths			Bond angles		
					Counts	RMSZ	# Z > 2	Counts	RMSZ	# Z > 2
3	DMS	F	205	-	3,3,3	0.64	0	3,3,3	0.45	0
6	POP	F	202	-	6,8,8	0.75	0	13,13,13	1.27	3 (23%)
4	FMT	B	202	-	2,2,2	0.68	0	1,1,1	0.20	0
2	COA	C	201	-	41,50,50	3.93	11 (26%)	52,75,75	2.41	11 (21%)
4	FMT	B	204	-	2,2,2	0.70	0	1,1,1	0.27	0
3	DMS	D	204	-	3,3,3	0.67	0	3,3,3	0.78	0
3	DMS	A	205	-	3,3,3	0.67	0	3,3,3	0.58	0
4	FMT	E	201	-	2,2,2	0.69	0	1,1,1	0.33	0
2	COA	D	201	-	41,50,50	3.95	11 (26%)	52,75,75	2.27	10 (19%)
3	DMS	A	202	-	3,3,3	0.52	0	3,3,3	0.65	0
6	POP	D	202	-	6,8,8	0.67	0	13,13,13	1.29	2 (15%)
4	FMT	A	207	-	2,2,2	0.59	0	1,1,1	0.04	0
4	FMT	C	205	-	2,2,2	0.65	0	1,1,1	0.38	0

In the following table, the Chirals column lists the number of chiral outliers, the number of chiral centers analysed, the number of these observed in the model and the number defined in the Chemical Component Dictionary. Similar counts are reported in the Torsion and Rings columns. '-' means no outliers of that kind were identified.

Mol	Type	Chain	Res	Link	Chirals	Torsions	Rings
2	COA	F	201[A]	8	-	15/44/64/64	0/3/3/3
2	COA	E	202[A]	8	-	12/44/64/64	0/3/3/3
2	COA	A	201	-	-	16/44/64/64	0/3/3/3
2	COA	F	201[B]	8	-	17/44/64/64	0/3/3/3
2	COA	D	201	-	-	17/44/64/64	0/3/3/3
2	COA	E	202[B]	8	-	20/44/64/64	0/3/3/3
6	POP	D	202	-	-	1/6/6/6	-
6	POP	F	202	-	-	2/6/6/6	-
2	COA	B	201	-	-	27/44/64/64	0/3/3/3
2	COA	C	201	-	-	21/44/64/64	0/3/3/3
7	GOL	D	206	-	-	2/4/4/4	-

All (87) bond length outliers are listed below:

Mol	Chain	Res	Type	Atoms	Z	Observed(Å)	Ideal(Å)
2	E	202[B]	COA	O4B-C1B	16.69	1.64	1.41
2	E	202[A]	COA	O4B-C1B	16.53	1.64	1.41
2	F	201[A]	COA	O4B-C1B	16.46	1.64	1.41
2	F	201[B]	COA	O4B-C1B	16.40	1.64	1.41

Continued on next page...

Continued from previous page...

Mol	Chain	Res	Type	Atoms	Z	Observed(Å)	Ideal(Å)
2	D	201	COA	O4B-C1B	16.33	1.63	1.41
2	B	201	COA	O4B-C1B	16.28	1.63	1.41
2	C	201	COA	O4B-C1B	16.21	1.63	1.41
2	A	201	COA	O4B-C1B	15.41	1.62	1.41
2	F	201[A]	COA	C2B-C1B	-14.14	1.32	1.53
2	F	201[B]	COA	C2B-C1B	-14.06	1.32	1.53
2	E	202[A]	COA	C2B-C1B	-14.05	1.32	1.53
2	D	201	COA	C2B-C1B	-13.95	1.32	1.53
2	E	202[B]	COA	C2B-C1B	-13.68	1.33	1.53
2	C	201	COA	C2B-C1B	-13.56	1.33	1.53
2	B	201	COA	C2B-C1B	-12.95	1.34	1.53
2	A	201	COA	C2B-C1B	-12.67	1.34	1.53
2	E	202[A]	COA	C9P-N8P	7.75	1.50	1.33
2	A	201	COA	C9P-N8P	7.53	1.50	1.33
2	B	201	COA	C9P-N8P	7.50	1.50	1.33
2	E	202[B]	COA	C9P-N8P	7.22	1.49	1.33
2	C	201	COA	C9P-N8P	7.18	1.49	1.33
2	D	201	COA	C9P-N8P	7.11	1.49	1.33
2	F	201[A]	COA	C9P-N8P	7.06	1.49	1.33
2	F	201[B]	COA	C9P-N8P	6.81	1.48	1.33
2	B	201	COA	O4B-C4B	-6.73	1.30	1.45
2	C	201	COA	O4B-C4B	-6.60	1.30	1.45
2	F	201[B]	COA	O4B-C4B	-6.54	1.30	1.45
2	E	202[B]	COA	O4B-C4B	-6.48	1.30	1.45
2	D	201	COA	O4B-C4B	-6.46	1.30	1.45
2	F	201[A]	COA	O4B-C4B	-6.35	1.30	1.45
2	E	202[A]	COA	O4B-C4B	-6.31	1.30	1.45
2	A	201	COA	O4B-C4B	-6.10	1.31	1.45
2	B	201	COA	C5P-N4P	5.51	1.45	1.33
2	E	202[B]	COA	C5P-N4P	5.48	1.45	1.33
2	F	201[B]	COA	C5P-N4P	5.35	1.45	1.33
2	E	202[A]	COA	C5P-N4P	5.24	1.45	1.33
2	F	201[A]	COA	C5P-N4P	5.17	1.45	1.33
2	D	201	COA	C5P-N4P	5.15	1.45	1.33
2	C	201	COA	C5P-N4P	5.12	1.45	1.33
2	A	201	COA	C5P-N4P	4.83	1.44	1.33
2	B	201	COA	C2A-N3A	3.48	1.37	1.32
2	A	201	COA	C2A-N3A	3.45	1.37	1.32
2	A	201	COA	OAP-CAP	-3.22	1.36	1.42
2	F	201[A]	COA	C2A-N3A	3.16	1.37	1.32
2	C	201	COA	C2A-N3A	3.13	1.37	1.32
2	E	202[A]	COA	C2A-N3A	3.12	1.37	1.32

Continued on next page...

Continued from previous page...

Mol	Chain	Res	Type	Atoms	Z	Observed(Å)	Ideal(Å)
2	F	201[B]	COA	C2A-N3A	3.08	1.37	1.32
2	D	201	COA	O3B-C3B	-3.06	1.33	1.44
2	C	201	COA	OAP-CAP	-3.03	1.36	1.42
2	C	201	COA	O3B-C3B	-2.99	1.33	1.44
2	E	202[B]	COA	C2A-N3A	2.99	1.36	1.32
2	D	201	COA	C2A-N3A	2.92	1.36	1.32
2	B	201	COA	OAP-CAP	-2.92	1.36	1.42
2	D	201	COA	OAP-CAP	-2.87	1.37	1.42
2	E	202[B]	COA	O3B-C3B	-2.84	1.33	1.44
2	F	201[A]	COA	O3B-C3B	-2.84	1.33	1.44
2	E	202[A]	COA	O3B-C3B	-2.80	1.33	1.44
2	B	201	COA	O3B-C3B	-2.79	1.33	1.44
2	F	201[A]	COA	OAP-CAP	-2.79	1.37	1.42
2	F	201[B]	COA	O3B-C3B	-2.74	1.34	1.44
2	E	202[A]	COA	OAP-CAP	-2.65	1.37	1.42
2	E	202[B]	COA	OAP-CAP	-2.55	1.37	1.42
2	F	201[B]	COA	OAP-CAP	-2.44	1.37	1.42
2	B	201	COA	O2B-C2B	2.42	1.48	1.43
2	F	201[A]	COA	C6A-N6A	2.38	1.42	1.34
2	C	201	COA	C6A-N6A	2.38	1.42	1.34
2	E	202[B]	COA	C6A-N6A	2.35	1.42	1.34
2	F	201[B]	COA	C6A-N6A	2.35	1.42	1.34
2	E	202[A]	COA	C6A-N6A	2.34	1.42	1.34
2	B	201	COA	C6A-N6A	2.33	1.42	1.34
2	E	202[A]	COA	O2B-C2B	2.32	1.48	1.43
2	C	201	COA	O2B-C2B	2.29	1.48	1.43
2	A	201	COA	C6A-N6A	2.29	1.42	1.34
2	E	202[B]	COA	O2B-C2B	2.27	1.48	1.43
2	D	201	COA	C6A-N6A	2.23	1.42	1.34
2	B	201	COA	C5A-C4A	-2.19	1.35	1.40
2	F	201[A]	COA	O2B-C2B	2.17	1.48	1.43
2	D	201	COA	C5A-C4A	-2.16	1.35	1.40
2	E	202[A]	COA	C3B-C4B	2.14	1.58	1.52
2	D	201	COA	O2B-C2B	2.13	1.48	1.43
2	E	202[B]	COA	C5A-C4A	-2.12	1.35	1.40
2	F	201[B]	COA	O2B-C2B	2.10	1.47	1.43
2	F	201[B]	COA	C5A-C4A	-2.09	1.35	1.40
2	F	201[B]	COA	C3B-C4B	2.07	1.58	1.52
2	E	202[A]	COA	C5A-C4A	-2.06	1.35	1.40
2	C	201	COA	C5A-C4A	-2.03	1.35	1.40
2	F	201[A]	COA	C3B-C4B	2.03	1.58	1.52

All (73) bond angle outliers are listed below:

Mol	Chain	Res	Type	Atoms	Z	Observed(°)	Ideal(°)
2	A	201	COA	C5A-C6A-N6A	9.77	135.20	120.35
2	B	201	COA	C5A-C6A-N6A	9.67	135.04	120.35
2	C	201	COA	C5A-C6A-N6A	9.63	134.99	120.35
2	F	201[B]	COA	C5A-C6A-N6A	9.48	134.75	120.35
2	E	202[B]	COA	C5A-C6A-N6A	9.40	134.64	120.35
2	E	202[A]	COA	C5A-C6A-N6A	9.36	134.58	120.35
2	F	201[A]	COA	C5A-C6A-N6A	9.28	134.46	120.35
2	D	201	COA	C5A-C6A-N6A	9.19	134.32	120.35
2	B	201	COA	N6A-C6A-N1A	-6.99	104.06	118.57
2	A	201	COA	N6A-C6A-N1A	-6.94	104.17	118.57
2	C	201	COA	N6A-C6A-N1A	-6.65	104.78	118.57
2	F	201[B]	COA	N6A-C6A-N1A	-6.41	105.26	118.57
2	A	201	COA	P2A-O3A-P1A	-6.36	111.01	132.83
2	E	202[B]	COA	N6A-C6A-N1A	-6.35	105.40	118.57
2	E	202[A]	COA	N6A-C6A-N1A	-6.31	105.48	118.57
2	D	201	COA	N6A-C6A-N1A	-6.27	105.56	118.57
2	F	201[A]	COA	N6A-C6A-N1A	-6.25	105.61	118.57
2	D	201	COA	N3A-C2A-N1A	-5.67	119.82	128.68
2	D	201	COA	C7P-C6P-C5P	-5.66	102.93	112.36
2	C	201	COA	N3A-C2A-N1A	-5.59	119.95	128.68
2	F	201[B]	COA	N3A-C2A-N1A	-5.52	120.05	128.68
2	E	202[B]	COA	N3A-C2A-N1A	-5.51	120.07	128.68
2	B	201	COA	N3A-C2A-N1A	-5.45	120.16	128.68
2	F	201[A]	COA	N3A-C2A-N1A	-5.43	120.19	128.68
2	E	202[A]	COA	N3A-C2A-N1A	-5.43	120.19	128.68
2	C	201	COA	C2P-C3P-N4P	-4.68	101.62	112.31
2	E	202[B]	COA	C7P-C6P-C5P	-4.60	104.69	112.36
2	A	201	COA	N3A-C2A-N1A	-4.23	122.06	128.68
2	C	201	COA	C6P-C7P-N8P	-4.20	103.43	111.90
2	C	201	COA	P2A-O3A-P1A	-4.10	118.77	132.83
2	A	201	COA	C3B-C2B-C1B	4.02	108.79	99.89
2	D	201	COA	C2P-C3P-N4P	-3.99	103.19	112.31
2	C	201	COA	C6P-C5P-N4P	3.89	122.97	116.42
2	B	201	COA	P2A-O3A-P1A	-3.72	120.05	132.83
2	F	201[B]	COA	C6P-C7P-N8P	-3.72	104.39	111.90
2	F	201[A]	COA	C3P-N4P-C5P	-3.54	116.26	122.84
2	E	202[A]	COA	CAP-C9P-N8P	3.54	123.63	116.58
2	A	201	COA	C6P-C7P-N8P	-3.49	104.85	111.90
2	F	201[A]	COA	C7P-N8P-C9P	-3.41	116.50	122.59
2	B	201	COA	CAP-C9P-N8P	3.36	123.27	116.58
2	F	201[B]	COA	C3B-C2B-C1B	3.29	107.19	99.89
2	C	201	COA	O5P-C5P-N4P	-3.21	116.96	123.01
2	C	201	COA	C3B-C2B-C1B	3.14	106.84	99.89

Continued on next page...

Continued from previous page...

Mol	Chain	Res	Type	Atoms	Z	Observed(°)	Ideal(°)
2	A	201	COA	C6P-C5P-N4P	3.02	121.51	116.42
2	C	201	COA	CEP-CBP-CAP	2.86	113.78	108.82
2	D	201	COA	C6P-C5P-N4P	2.84	121.20	116.42
2	E	202[A]	COA	C3P-N4P-C5P	-2.76	117.71	122.84
2	B	201	COA	C6P-C5P-N4P	2.76	121.07	116.42
2	B	201	COA	O6A-CCP-CBP	2.71	114.91	110.55
6	D	202	POP	P2-O-P1	-2.66	123.69	132.83
2	A	201	COA	C2P-C3P-N4P	-2.60	106.36	112.31
2	A	201	COA	O5P-C5P-N4P	-2.56	118.19	123.01
2	E	202[B]	COA	P2A-O3A-P1A	-2.54	124.12	132.83
2	E	202[A]	COA	P2A-O3A-P1A	-2.50	124.24	132.83
2	B	201	COA	CEP-CBP-CCP	-2.48	104.18	108.23
2	D	201	COA	C7P-N8P-C9P	-2.47	118.19	122.59
2	D	201	COA	P2A-O3A-P1A	-2.45	124.41	132.83
2	E	202[B]	COA	C6P-C7P-N8P	-2.43	106.99	111.90
2	F	201[B]	COA	P2A-O3A-P1A	-2.41	124.57	132.83
2	D	201	COA	CEP-CBP-CCP	2.36	112.09	108.23
2	B	201	COA	O2B-C2B-C3B	-2.35	104.50	111.17
2	E	202[B]	COA	CEP-CBP-CAP	2.31	112.82	108.82
2	D	201	COA	CDP-CBP-CCP	2.28	111.95	108.23
2	B	201	COA	C4A-C5A-N7A	-2.27	107.04	109.40
2	B	201	COA	C3B-C2B-C1B	2.25	104.87	99.89
2	F	201[A]	COA	C7P-C6P-C5P	-2.21	108.67	112.36
2	B	201	COA	OAP-CAP-C9P	-2.13	99.16	109.42
6	D	202	POP	O3-P1-O	2.12	111.76	104.64
6	F	202	POP	O5-P2-O	2.09	111.64	104.64
2	C	201	COA	C2B-C3B-C4B	2.08	106.90	103.22
2	F	201[B]	COA	C6P-C5P-N4P	2.07	119.91	116.42
6	F	202	POP	O6-P2-O	2.05	111.51	104.64
6	F	202	POP	O2-P1-O	2.00	111.35	104.64

There are no chirality outliers.

All (150) torsion outliers are listed below:

Mol	Chain	Res	Type	Atoms
2	A	201	COA	C4B-C3B-O3B-P3B
2	A	201	COA	C4B-C5B-O5B-P1A
2	A	201	COA	CDP-CBP-CCP-O6A
2	A	201	COA	CEP-CBP-CCP-O6A
2	A	201	COA	CAP-CBP-CCP-O6A
2	A	201	COA	C5P-C6P-C7P-N8P
2	A	201	COA	S1P-C2P-C3P-N4P

Continued on next page...

Continued from previous page...

Mol	Chain	Res	Type	Atoms
2	B	201	COA	C3B-C4B-C5B-O5B
2	B	201	COA	C4B-C5B-O5B-P1A
2	B	201	COA	C5B-O5B-P1A-O1A
2	B	201	COA	C5B-O5B-P1A-O3A
2	B	201	COA	P2A-O3A-P1A-O5B
2	B	201	COA	CCP-O6A-P2A-O3A
2	B	201	COA	CCP-O6A-P2A-O4A
2	B	201	COA	CDP-CBP-CCP-O6A
2	B	201	COA	CEP-CBP-CCP-O6A
2	B	201	COA	CAP-CBP-CCP-O6A
2	B	201	COA	OAP-CAP-CBP-CCP
2	B	201	COA	C9P-CAP-CBP-CCP
2	B	201	COA	OAP-CAP-CBP-CDP
2	B	201	COA	C9P-CAP-CBP-CDP
2	B	201	COA	OAP-CAP-CBP-CEP
2	B	201	COA	C9P-CAP-CBP-CEP
2	B	201	COA	CAP-C9P-N8P-C7P
2	B	201	COA	C5P-C6P-C7P-N8P
2	C	201	COA	C4B-C5B-O5B-P1A
2	C	201	COA	C5B-O5B-P1A-O3A
2	C	201	COA	CAP-CBP-CCP-O6A
2	C	201	COA	OAP-CAP-CBP-CCP
2	C	201	COA	C9P-CAP-CBP-CCP
2	C	201	COA	OAP-CAP-CBP-CDP
2	C	201	COA	C9P-CAP-CBP-CDP
2	C	201	COA	OAP-CAP-CBP-CEP
2	C	201	COA	C9P-CAP-CBP-CEP
2	C	201	COA	S1P-C2P-C3P-N4P
2	D	201	COA	C4B-C5B-O5B-P1A
2	D	201	COA	C5B-O5B-P1A-O2A
2	D	201	COA	C5B-O5B-P1A-O3A
2	D	201	COA	OAP-CAP-CBP-CCP
2	D	201	COA	C9P-CAP-CBP-CCP
2	D	201	COA	OAP-CAP-CBP-CDP
2	D	201	COA	C9P-CAP-CBP-CDP
2	D	201	COA	OAP-CAP-CBP-CEP
2	D	201	COA	C9P-CAP-CBP-CEP
2	D	201	COA	S1P-C2P-C3P-N4P
2	E	202[A]	COA	CCP-O6A-P2A-O4A
2	E	202[A]	COA	CCP-O6A-P2A-O5A
2	E	202[A]	COA	CAP-C9P-N8P-C7P
2	E	202[A]	COA	C5P-C6P-C7P-N8P

Continued on next page...

Continued from previous page...

Mol	Chain	Res	Type	Atoms
2	E	202[A]	COA	S1P-C2P-C3P-N4P
2	E	202[B]	COA	C5B-O5B-P1A-O2A
2	E	202[B]	COA	C5B-O5B-P1A-O3A
2	E	202[B]	COA	CCP-O6A-P2A-O3A
2	E	202[B]	COA	CAP-CBP-CCP-O6A
2	E	202[B]	COA	OAP-CAP-CBP-CCP
2	E	202[B]	COA	C9P-CAP-CBP-CCP
2	E	202[B]	COA	C9P-CAP-CBP-CDP
2	E	202[B]	COA	OAP-CAP-CBP-CEP
2	E	202[B]	COA	C9P-CAP-CBP-CEP
2	F	201[A]	COA	P2A-O3A-P1A-O5B
2	F	201[A]	COA	CCP-O6A-P2A-O3A
2	F	201[A]	COA	CCP-O6A-P2A-O4A
2	F	201[A]	COA	CAP-CBP-CCP-O6A
2	F	201[A]	COA	CAP-C9P-N8P-C7P
2	F	201[A]	COA	S1P-C2P-C3P-N4P
2	F	201[B]	COA	C3B-C4B-C5B-O5B
2	F	201[B]	COA	C5B-O5B-P1A-O2A
2	F	201[B]	COA	C5B-O5B-P1A-O3A
2	F	201[B]	COA	CCP-O6A-P2A-O3A
2	F	201[B]	COA	CAP-CBP-CCP-O6A
6	F	202	POP	P2-O-P1-O2
7	D	206	GOL	O1-C1-C2-C3
2	A	201	COA	C6P-C5P-N4P-C3P
2	C	201	COA	C6P-C5P-N4P-C3P
2	D	201	COA	C6P-C5P-N4P-C3P
2	E	202[A]	COA	C6P-C5P-N4P-C3P
2	F	201[A]	COA	C6P-C5P-N4P-C3P
2	B	201	COA	O9P-C9P-N8P-C7P
2	E	202[A]	COA	O9P-C9P-N8P-C7P
2	F	201[A]	COA	O9P-C9P-N8P-C7P
2	C	201	COA	C3B-C4B-C5B-O5B
2	C	201	COA	O4B-C4B-C5B-O5B
2	E	202[B]	COA	C3B-C4B-C5B-O5B
2	E	202[B]	COA	O4B-C4B-C5B-O5B
2	A	201	COA	O5P-C5P-N4P-C3P
2	C	201	COA	O5P-C5P-N4P-C3P
2	D	201	COA	O5P-C5P-N4P-C3P
2	E	202[A]	COA	O5P-C5P-N4P-C3P
2	F	201[A]	COA	O5P-C5P-N4P-C3P
7	D	206	GOL	O1-C1-C2-O2
2	B	201	COA	O4B-C4B-C5B-O5B

Continued on next page...

Continued from previous page...

Mol	Chain	Res	Type	Atoms
2	F	201[B]	COA	O4B-C4B-C5B-O5B
2	C	201	COA	CDP-CBP-CCP-O6A
2	C	201	COA	CEP-CBP-CCP-O6A
2	E	202[B]	COA	CDP-CBP-CCP-O6A
2	E	202[B]	COA	CEP-CBP-CCP-O6A
2	F	201[B]	COA	CDP-CBP-CCP-O6A
2	F	201[B]	COA	CEP-CBP-CCP-O6A
2	C	201	COA	C5P-C6P-C7P-N8P
2	D	201	COA	C5P-C6P-C7P-N8P
2	F	201[B]	COA	C5P-C6P-C7P-N8P
2	F	201[A]	COA	CDP-CBP-CCP-O6A
6	D	202	POP	P1-O-P2-O4
2	E	202[B]	COA	OAP-CAP-CBP-CDP
2	D	201	COA	C3B-C4B-C5B-O5B
2	B	201	COA	O9P-C9P-CAP-CBP
2	F	201[B]	COA	N8P-C9P-CAP-CBP
2	E	202[A]	COA	P2A-O3A-P1A-O5B
2	A	201	COA	N8P-C9P-CAP-OAP
2	B	201	COA	N8P-C9P-CAP-OAP
2	F	201[A]	COA	CEP-CBP-CCP-O6A
2	B	201	COA	C3B-O3B-P3B-O8A
2	B	201	COA	C3B-O3B-P3B-O9A
2	B	201	COA	N4P-C5P-C6P-C7P
2	C	201	COA	P1A-O3A-P2A-O5A
2	B	201	COA	CBP-CCP-O6A-P2A
2	F	201[B]	COA	C4B-C5B-O5B-P1A
2	C	201	COA	C5B-O5B-P1A-O2A
2	D	201	COA	C5B-O5B-P1A-O1A
2	E	202[B]	COA	C5B-O5B-P1A-O1A
2	E	202[B]	COA	CCP-O6A-P2A-O4A
2	E	202[B]	COA	CCP-O6A-P2A-O5A
2	F	201[B]	COA	C5B-O5B-P1A-O1A
2	F	201[B]	COA	CCP-O6A-P2A-O4A
2	F	201[B]	COA	CCP-O6A-P2A-O5A
2	B	201	COA	O5P-C5P-C6P-C7P
2	D	201	COA	O4B-C4B-C5B-O5B
2	F	201[A]	COA	C2P-C3P-N4P-C5P
2	E	202[B]	COA	S1P-C2P-C3P-N4P
2	A	201	COA	P1A-O3A-P2A-O4A
2	A	201	COA	C2B-C3B-O3B-P3B
2	F	201[A]	COA	C3B-O3B-P3B-O7A
2	F	201[B]	COA	C3B-O3B-P3B-O7A

Continued on next page...

Continued from previous page...

Mol	Chain	Res	Type	Atoms
6	F	202	POP	P2-O-P1-O3
2	A	201	COA	C3B-O3B-P3B-O8A
2	D	201	COA	C3B-O3B-P3B-O9A
2	E	202[A]	COA	CCP-O6A-P2A-O3A
2	E	202[B]	COA	C3B-O3B-P3B-O8A
2	E	202[B]	COA	C3B-O3B-P3B-O9A
2	F	201[B]	COA	C3B-O3B-P3B-O8A
2	A	201	COA	P1A-O3A-P2A-O5A
2	E	202[A]	COA	P2A-O3A-P1A-O1A
2	F	201[A]	COA	P2A-O3A-P1A-O2A
2	A	201	COA	CBP-CCP-O6A-P2A
2	E	202[A]	COA	CBP-CCP-O6A-P2A
2	F	201[A]	COA	CBP-CCP-O6A-P2A
2	C	201	COA	C5B-O5B-P1A-O1A
2	C	201	COA	CCP-O6A-P2A-O4A
2	A	201	COA	O9P-C9P-CAP-CBP
2	F	201[B]	COA	O9P-C9P-CAP-CBP

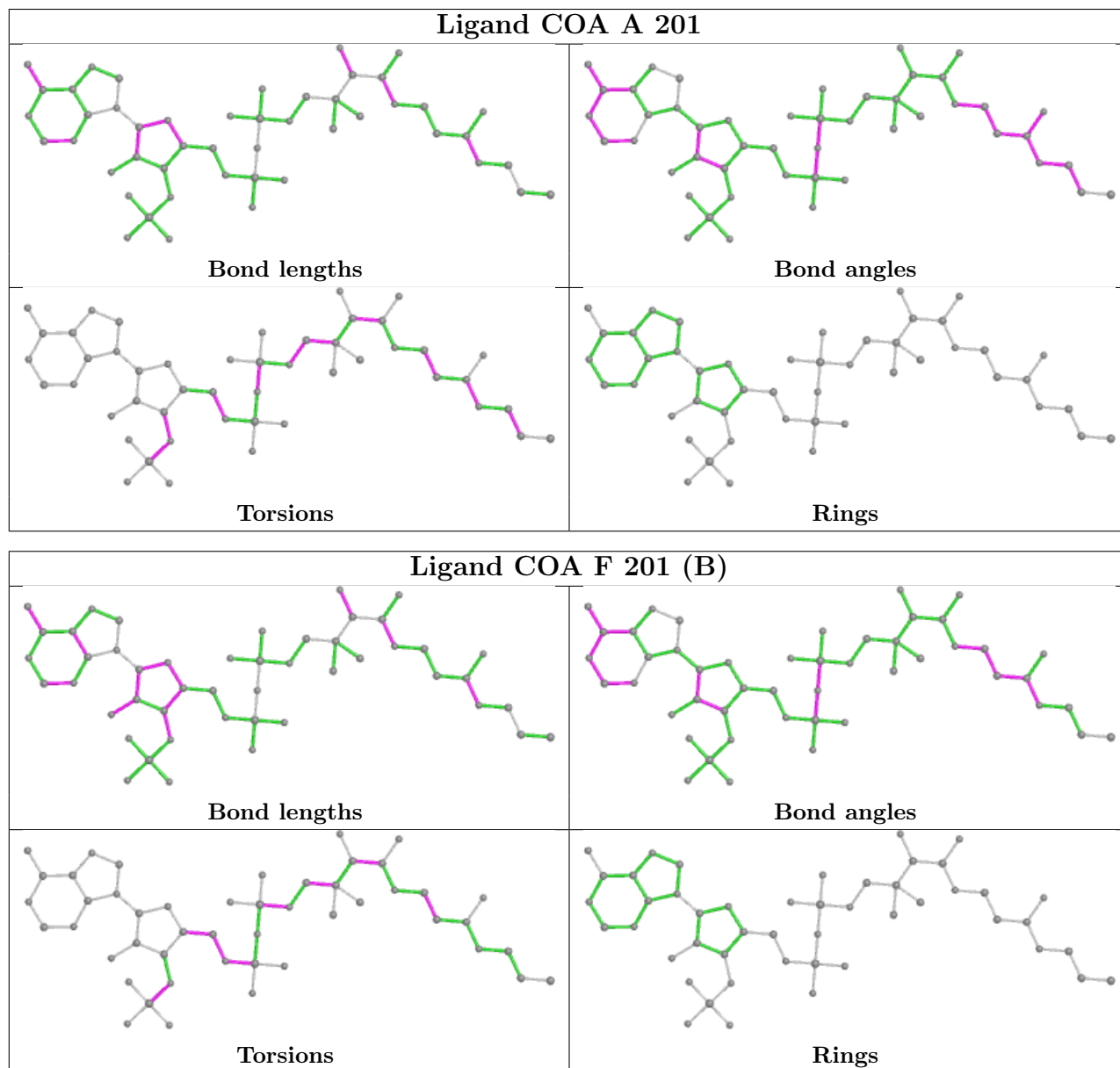
There are no ring outliers.

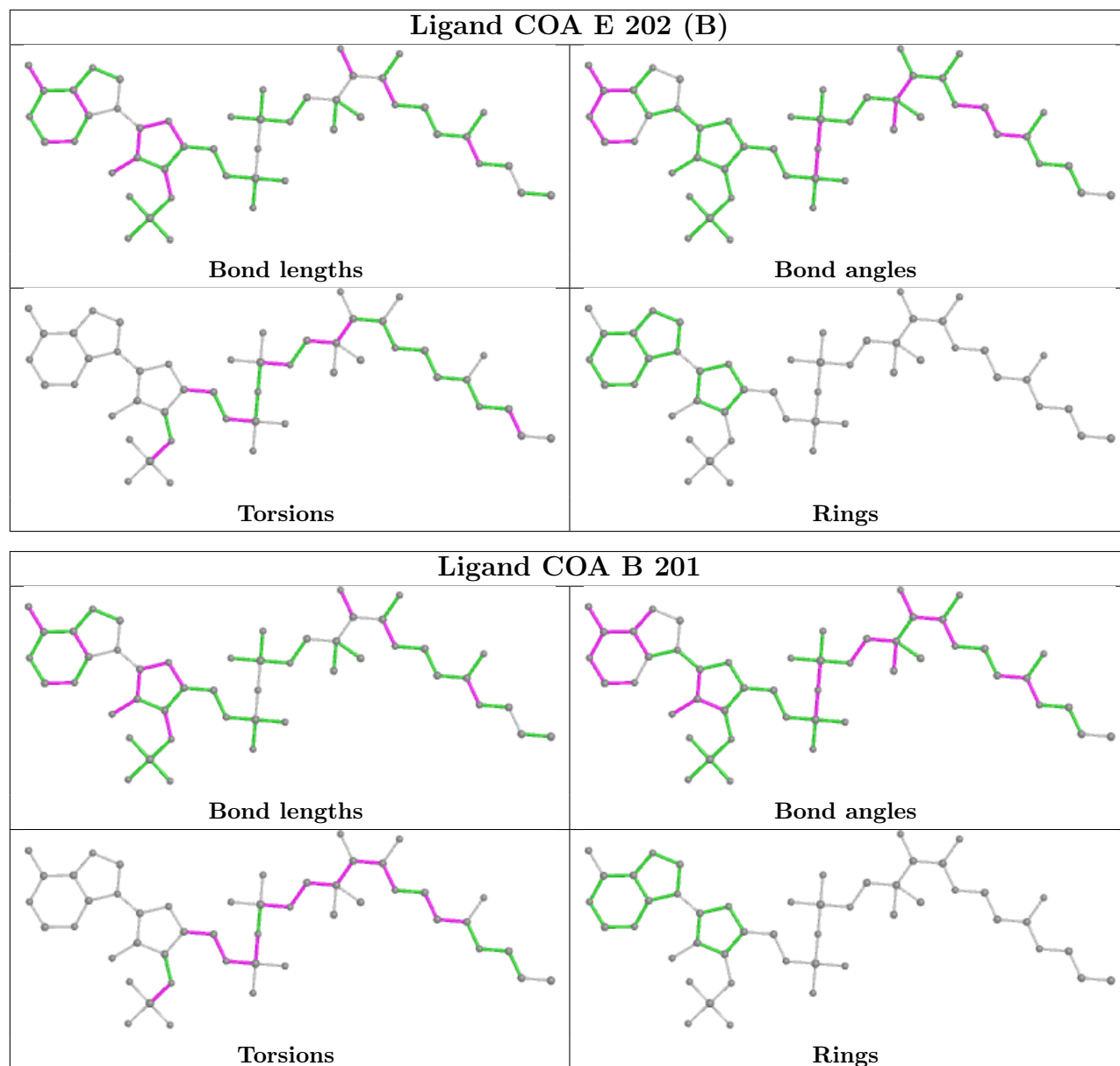
16 monomers are involved in 54 short contacts:

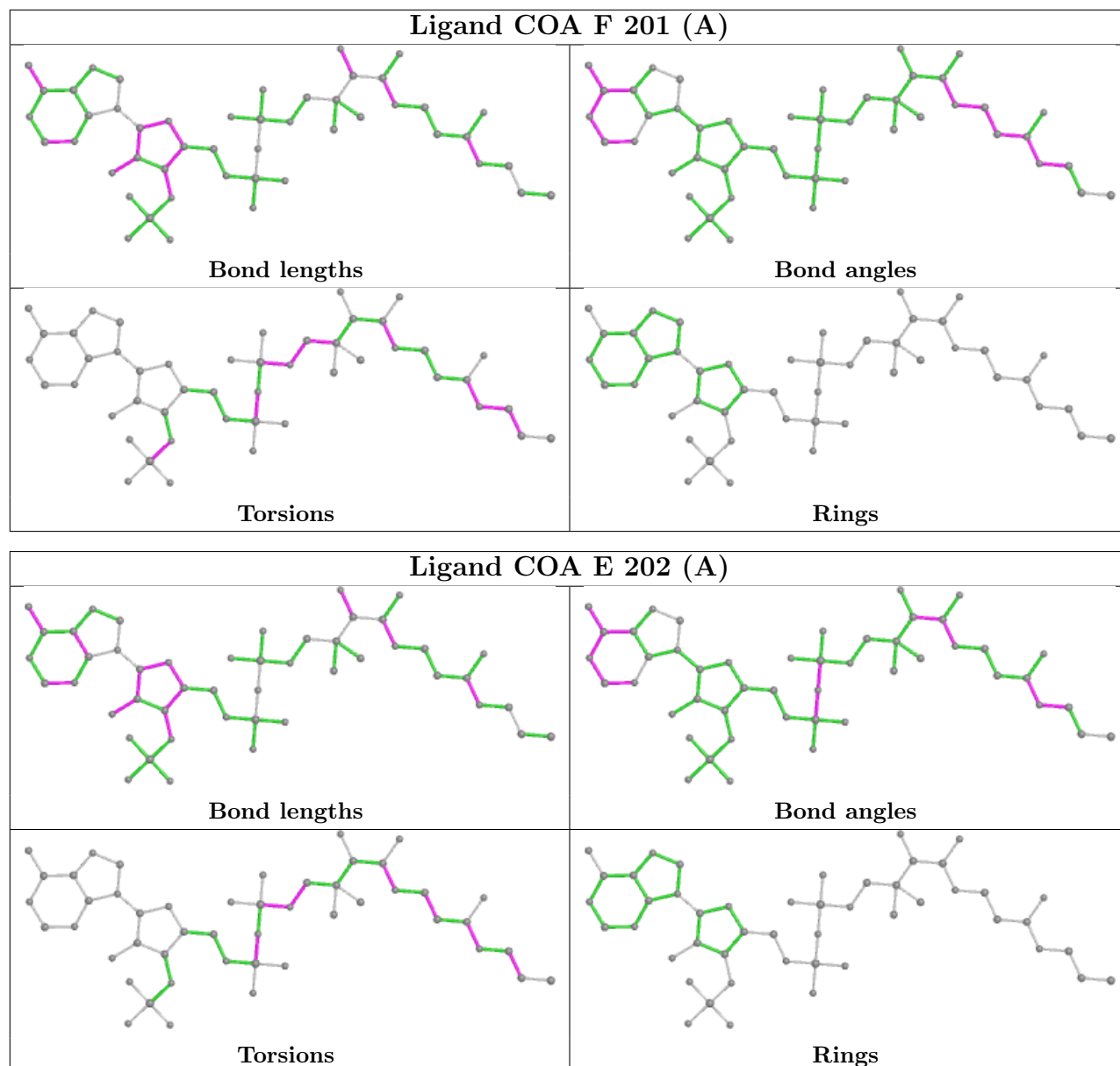
Mol	Chain	Res	Type	Clashes	Symm-Clashes
3	D	203	DMS	1	0
3	A	204	DMS	3	0
7	D	206	GOL	1	0
2	A	201	COA	8	0
2	F	201[B]	COA	6	0
2	E	202[B]	COA	9	0
2	B	201	COA	5	0
4	B	205	FMT	1	0
2	F	201[A]	COA	3	0
2	E	202[A]	COA	5	0
3	F	204	DMS	1	0
3	A	203	DMS	1	0
2	C	201	COA	5	0
4	B	204	FMT	1	0
2	D	201	COA	4	0
3	A	202	DMS	1	0

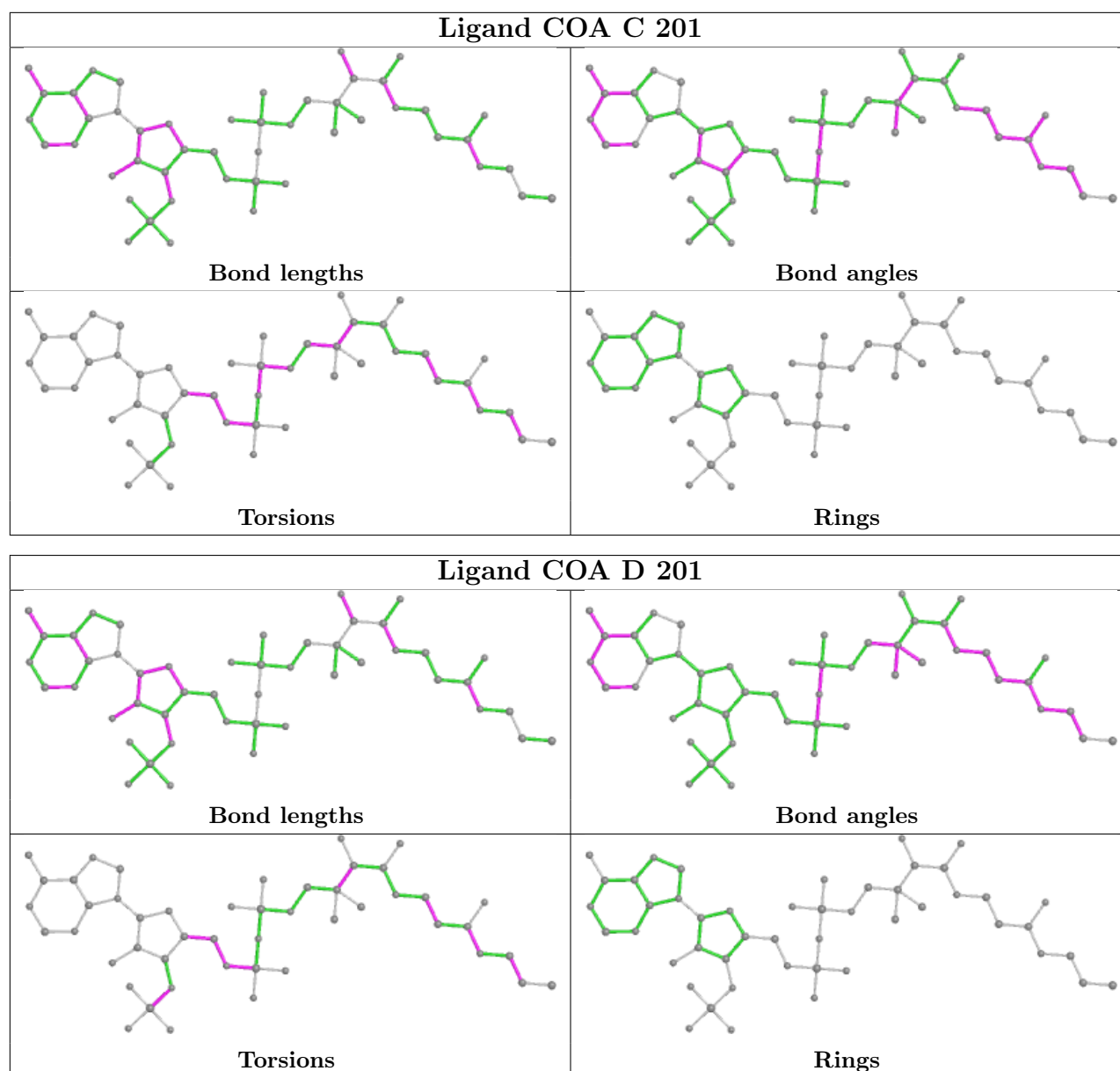
The following is a two-dimensional graphical depiction of Mogul quality analysis of bond lengths, bond angles, torsion angles, and ring geometry for all instances of the Ligand of Interest. In addition, ligands with molecular weight > 250 and outliers as shown on the validation Tables will

also be included. For torsion angles, if less than 5% of the Mogul distribution of torsion angles is within 10 degrees of the torsion angle in question, then that torsion angle is considered an outlier. Any bond that is central to one or more torsion angles identified as an outlier by Mogul will be highlighted in the graph. For rings, the root-mean-square deviation (RMSD) between the ring in question and similar rings identified by Mogul is calculated over all ring torsion angles. If the average RMSD is greater than 60 degrees and the minimal RMSD between the ring in question and any Mogul-identified rings is also greater than 60 degrees, then that ring is considered an outlier. The outliers are highlighted in purple. The color gray indicates Mogul did not find sufficient equivalents in the CSD to analyse the geometry.









5.7 Other polymers [i](#)

There are no such residues in this entry.

5.8 Polymer linkage issues [i](#)

There are no chain breaks in this entry.

6 Fit of model and data

6.1 Protein, DNA and RNA chains

In the following table, the column labelled ‘#RSRZ> 2’ contains the number (and percentage) of RSRZ outliers, followed by percent RSRZ outliers for the chain as percentile scores relative to all X-ray entries and entries of similar resolution. The OWAB column contains the minimum, median, 95th percentile and maximum values of the occupancy-weighted average B-factor per residue. The column labelled ‘Q< 0.9’ lists the number of (and percentage) of residues with an average occupancy less than 0.9.

Mol	Chain	Analysed	<RSRZ>	#RSRZ>2	OWAB(Å ²)	Q<0.9
1	A	157/159 (98%)	0.11	4 (2%) 57 55	24, 36, 62, 69	0
1	B	158/159 (99%)	0.08	4 (2%) 57 55	25, 36, 62, 70	0
1	C	158/159 (99%)	0.12	2 (1%) 77 75	31, 43, 62, 75	0
1	D	158/159 (99%)	0.21	5 (3%) 47 45	31, 43, 64, 74	0
1	E	158/159 (99%)	0.20	3 (1%) 66 65	28, 42, 64, 73	0
1	F	158/159 (99%)	0.18	5 (3%) 47 45	30, 42, 63, 83	0
All	All	947/954 (99%)	0.15	23 (2%) 59 56	24, 40, 63, 83	0

All (23) RSRZ outliers are listed below:

Mol	Chain	Res	Type	RSRZ
1	E	1[A]	MET	4.2
1	B	99	PHE	3.5
1	E	28	PHE	3.5
1	F	95	PHE	3.3
1	F	1	MET	3.2
1	A	27	LEU	3.1
1	A	92	VAL	2.7
1	D	92	VAL	2.7
1	A	101	LEU	2.6
1	C	125	PHE	2.6
1	D	27	LEU	2.6
1	D	97	TYR	2.6
1	B	158	LYS	2.5
1	A	158	LYS	2.5
1	D	157	PHE	2.5
1	C	28	PHE	2.4
1	F	90	ARG	2.4
1	D	101	LEU	2.4
1	B	101	LEU	2.3

Continued on next page...

Continued from previous page...

Mol	Chain	Res	Type	RSRZ
1	F	101	LEU	2.1
1	E	4	VAL	2.1
1	F	94	ASP	2.1
1	B	95	PHE	2.0

6.2 Non-standard residues in protein, DNA, RNA chains [i](#)

There are no non-standard protein/DNA/RNA residues in this entry.

6.3 Carbohydrates [i](#)

There are no monosaccharides in this entry.

6.4 Ligands [i](#)

In the following table, the Atoms column lists the number of modelled atoms in the group and the number defined in the chemical component dictionary. The B-factors column lists the minimum, median, 95th percentile and maximum values of B factors of atoms in the group. The column labelled 'Q< 0.9' lists the number of atoms with occupancy less than 0.9.

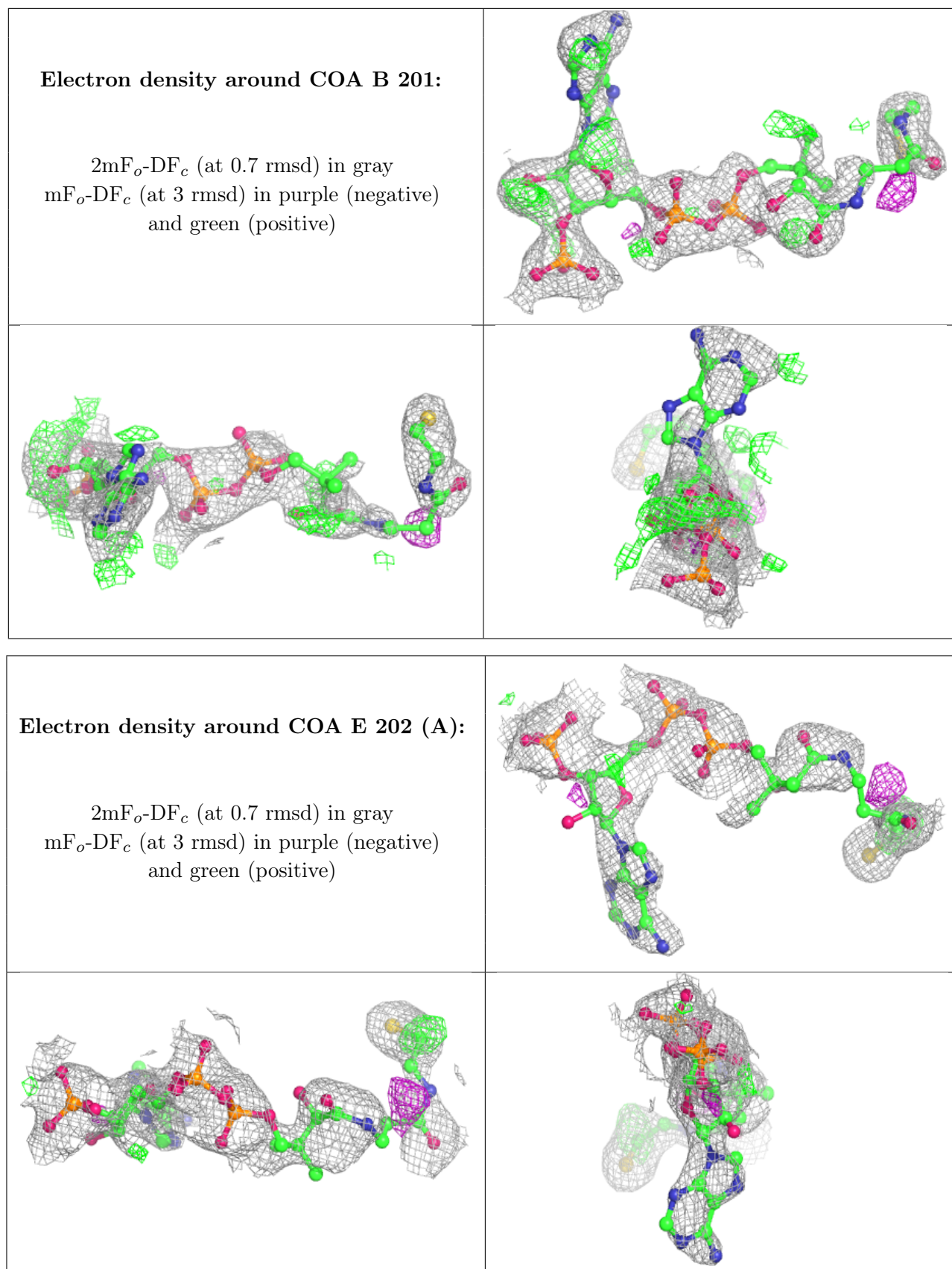
Mol	Type	Chain	Res	Atoms	RSCC	RSR	B-factors(Å ²)	Q<0.9
2	COA	B	201	48/48	0.83	0.26	31,55,65,69	48
2	COA	E	202[A]	48/48	0.85	0.30	26,51,69,70	48
2	COA	E	202[B]	48/48	0.85	0.30	36,53,69,69	48
4	FMT	B	203	3/3	0.85	0.16	62,62,68,68	0
2	COA	D	201	48/48	0.86	0.22	38,64,78,81	48
2	COA	F	201[A]	48/48	0.86	0.29	30,54,69,70	48
2	COA	F	201[B]	48/48	0.86	0.29	36,54,70,73	48
4	FMT	B	202	3/3	0.86	0.17	55,55,57,58	0
2	COA	C	201	48/48	0.86	0.24	42,70,84,87	48
4	FMT	B	207	3/3	0.86	0.27	48,48,49,59	0
6	POP	D	202	9/9	0.86	0.24	42,52,60,63	9
7	GOL	D	206	6/6	0.86	0.21	61,69,74,77	0
2	COA	A	201	48/48	0.87	0.24	36,57,69,73	48
5	ACT	C	206	4/4	0.88	0.19	49,50,50,52	0
4	FMT	C	204	3/3	0.89	0.13	58,58,60,64	0
6	POP	F	202	9/9	0.90	0.20	44,46,62,62	9
4	FMT	A	207	3/3	0.90	0.26	46,46,48,55	0
4	FMT	E	201	3/3	0.91	0.17	53,53,55,58	0
4	FMT	B	205	3/3	0.93	0.18	44,44,48,64	0

Continued on next page...

Continued from previous page...

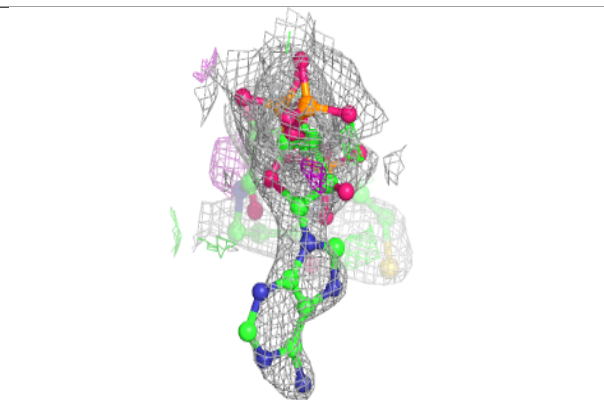
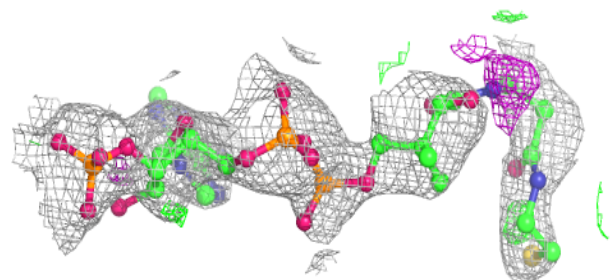
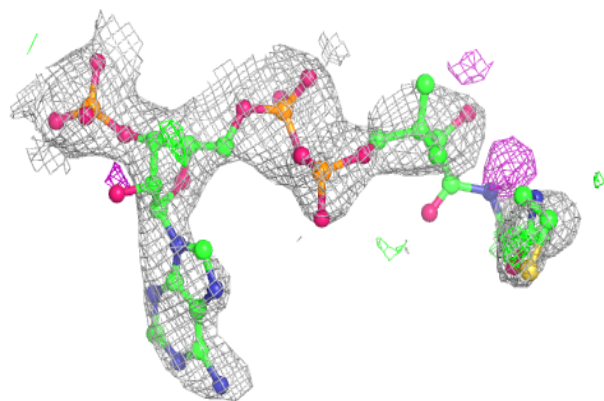
Mol	Type	Chain	Res	Atoms	RSCC	RSR	B-factors(Å ²)	Q<0.9
4	FMT	A	206	3/3	0.94	0.13	47,47,48,50	0
4	FMT	D	205	3/3	0.94	0.12	53,53,65,70	0
4	FMT	B	204	3/3	0.94	0.17	47,47,55,56	0
4	FMT	E	205	3/3	0.94	0.16	52,52,56,62	0
8	CA	F	203	1/1	0.94	0.15	66,66,66,66	0
4	FMT	B	206	3/3	0.95	0.16	63,63,63,69	0
5	ACT	F	206	4/4	0.95	0.18	37,42,47,52	0
3	DMS	F	205	4/4	0.95	0.17	65,74,75,84	0
3	DMS	A	202	4/4	0.96	0.13	43,51,56,57	0
4	FMT	C	202	3/3	0.96	0.19	48,48,50,56	0
4	FMT	C	203	3/3	0.96	0.20	42,42,43,45	0
3	DMS	A	204	4/4	0.96	0.22	32,37,39,46	4
5	ACT	E	206	4/4	0.96	0.08	34,38,43,51	0
3	DMS	D	204	4/4	0.97	0.16	46,51,55,57	0
3	DMS	E	204	4/4	0.97	0.12	56,57,60,64	0
5	ACT	A	208	4/4	0.97	0.21	37,41,48,54	0
4	FMT	C	205	3/3	0.97	0.22	45,45,46,49	0
3	DMS	A	205	4/4	0.97	0.12	51,54,61,69	0
3	DMS	D	203	4/4	0.98	0.19	42,48,53,64	0
3	DMS	F	204	4/4	0.98	0.18	54,57,57,62	0
8	CA	E	203	1/1	0.99	0.06	64,64,64,64	0
3	DMS	A	203	4/4	0.99	0.19	32,42,45,56	0

The following is a graphical depiction of the model fit to experimental electron density of all instances of the Ligand of Interest. In addition, ligands with molecular weight > 250 and outliers as shown on the geometry validation Tables will also be included. Each fit is shown from different orientation to approximate a three-dimensional view.

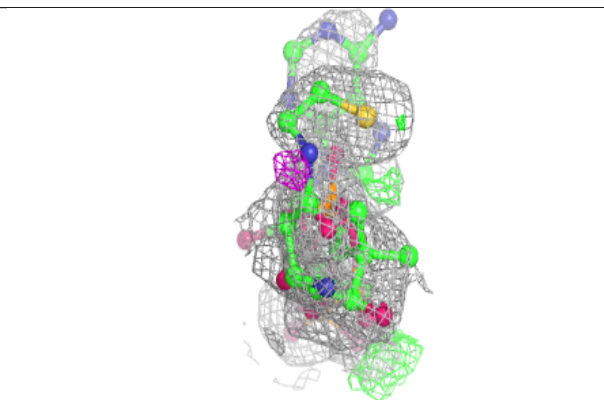
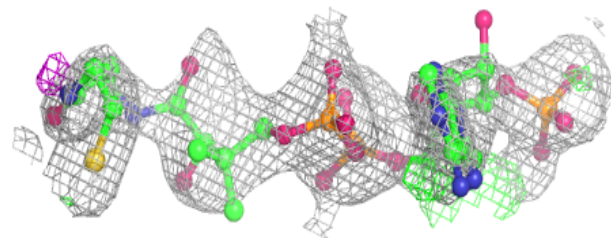
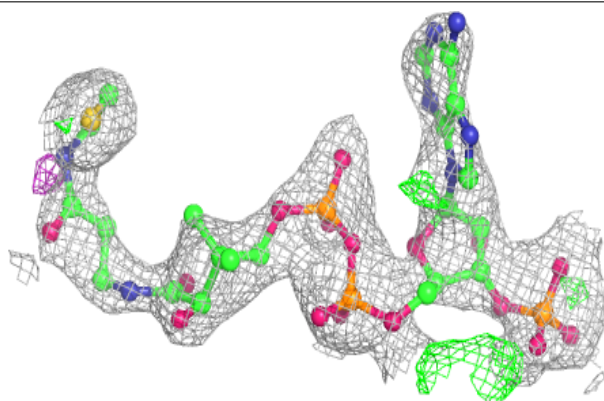


Electron density around COA E 202 (B):

$2mF_o-DF_c$ (at 0.7 rmsd) in gray
 mF_o-DF_c (at 3 rmsd) in purple (negative)
and green (positive)

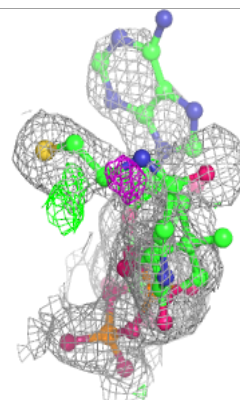
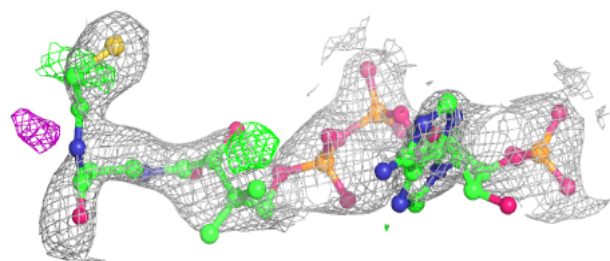
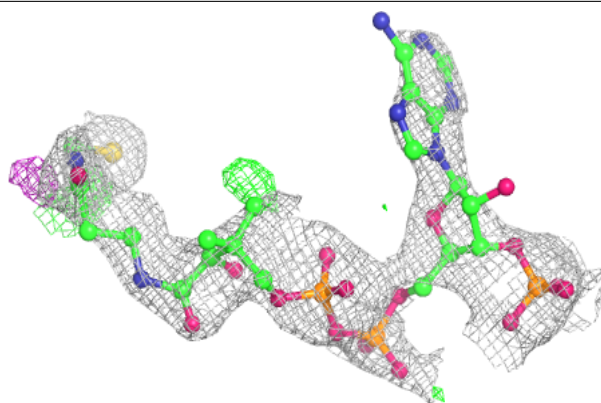
**Electron density around COA D 201:**

$2mF_o-DF_c$ (at 0.7 rmsd) in gray
 mF_o-DF_c (at 3 rmsd) in purple (negative)
and green (positive)

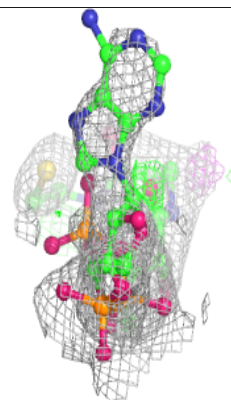
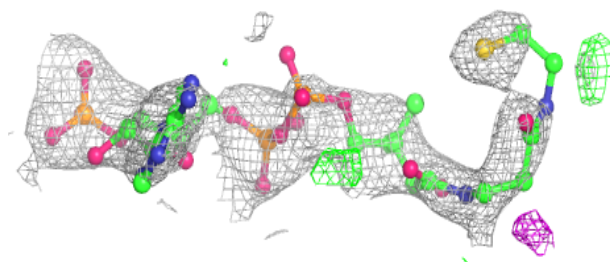
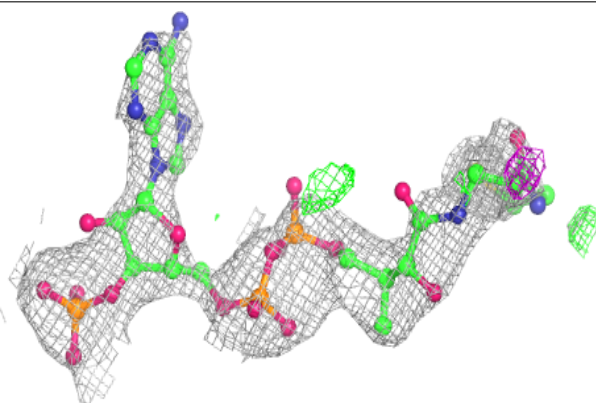


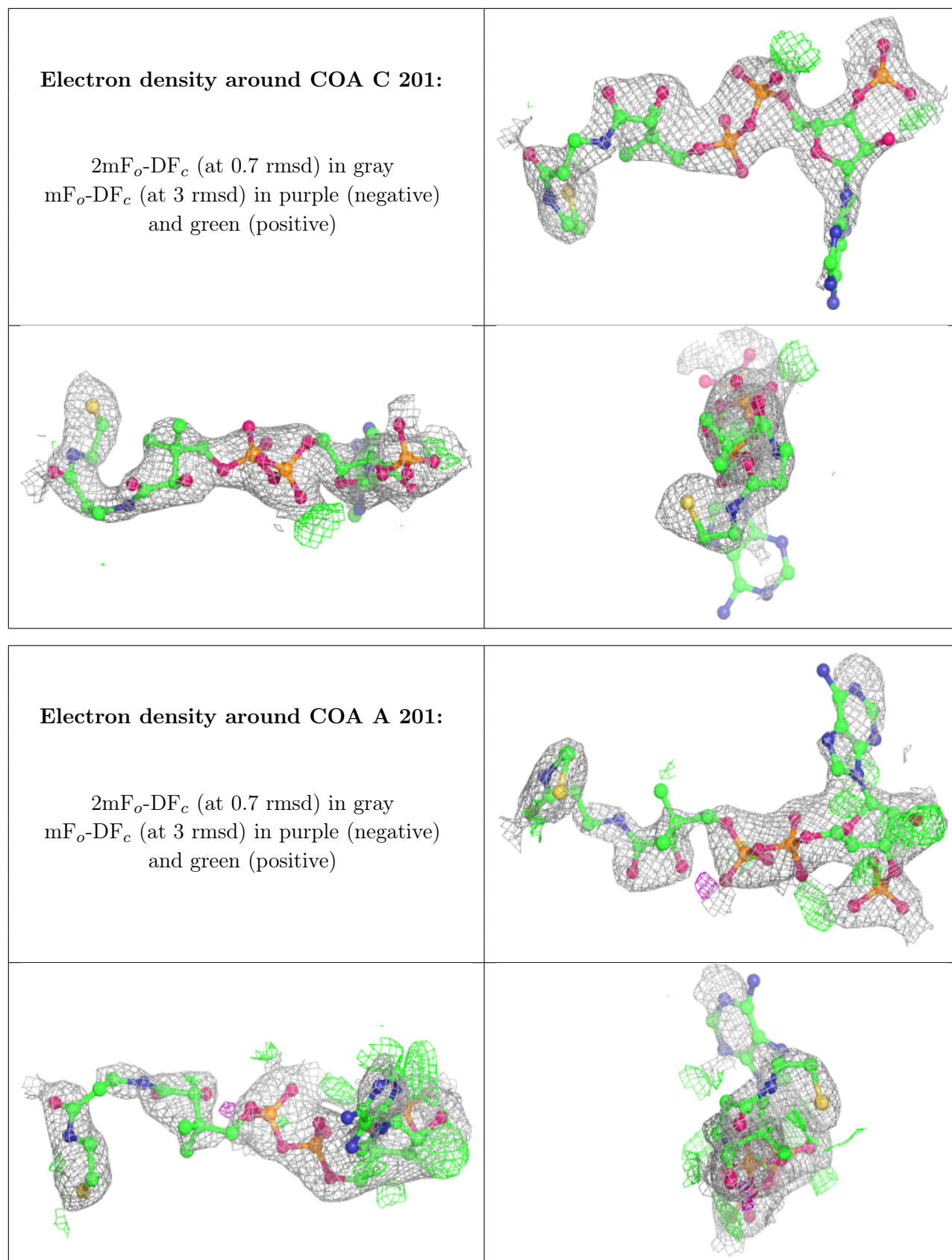
Electron density around COA F 201 (A):

$2mF_o-DF_c$ (at 0.7 rmsd) in gray
 mF_o-DF_c (at 3 rmsd) in purple (negative)
and green (positive)

**Electron density around COA F 201 (B):**

$2mF_o-DF_c$ (at 0.7 rmsd) in gray
 mF_o-DF_c (at 3 rmsd) in purple (negative)
and green (positive)





6.5 Other polymers [i](#)

There are no such residues in this entry.