



Full wwPDB X-ray Structure Validation Report ⓘ

Sep 13, 2023 – 11:36 AM EDT

PDB ID : 4QNP
Title : Crystal structure of the 2009 pandemic H1N1 influenza virus neuraminidase with a neutralizing antibody
Authors : Wan, H.Q.; Yang, H.; Shore, D.A.; Garten, R.J.; Couzens, L.; Gao, J.; Jiang, L.L.; Carney, P.J.; Villanueva, J.; Stevens, J.; Eichelberger, M.C.
Deposited on : 2014-06-18
Resolution : 2.80 Å(reported)

This is a Full wwPDB X-ray Structure Validation Report for a publicly released PDB entry.

We welcome your comments at validation@mail.wwpdb.org

A user guide is available at

<https://www.wwpdb.org/validation/2017/XrayValidationReportHelp>

with specific help available everywhere you see the ⓘ symbol.

The types of validation reports are described at

<http://www.wwpdb.org/validation/2017/FAQs#types>.

The following versions of software and data (see [references ⓘ](#)) were used in the production of this report:

MolProbity : 4.02b-467
Mogul : 1.8.5 (274361), CSD as541be (2020)
Xtriage (Phenix) : 1.13
EDS : 2.35.1
Percentile statistics : 20191225.v01 (using entries in the PDB archive December 25th 2019)
Refmac : 5.8.0158
CCP4 : 7.0.044 (Gargrove)
Ideal geometry (proteins) : Engh & Huber (2001)
Ideal geometry (DNA, RNA) : Parkinson et al. (1996)
Validation Pipeline (wwPDB-VP) : 2.35.1

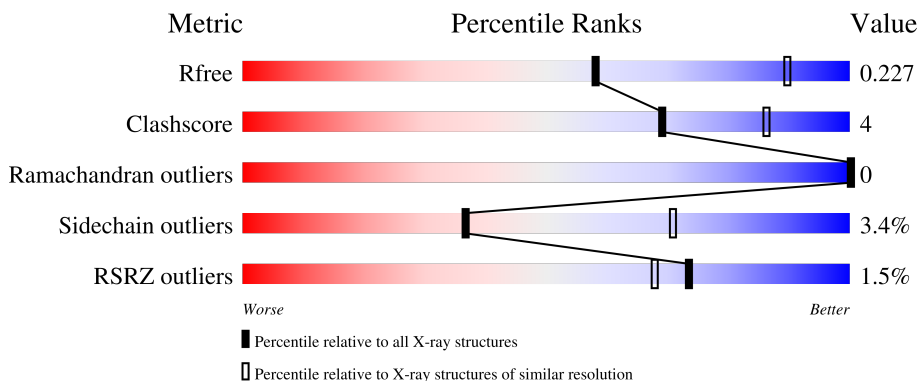
1 Overall quality at a glance

The following experimental techniques were used to determine the structure:

X-RAY DIFFRACTION

The reported resolution of this entry is 2.80 Å.

Percentile scores (ranging between 0-100) for global validation metrics of the entry are shown in the following graphic. The table shows the number of entries on which the scores are based.



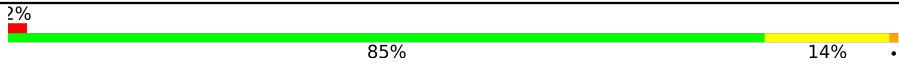
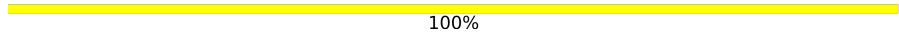

Metric	Whole archive (#Entries)	Similar resolution (#Entries, resolution range(Å))
R_{free}	130704	3140 (2.80-2.80)
Clashscore	141614	3569 (2.80-2.80)
Ramachandran outliers	138981	3498 (2.80-2.80)
Sidechain outliers	138945	3500 (2.80-2.80)
RSRZ outliers	127900	3078 (2.80-2.80)

The table below summarises the geometric issues observed across the polymeric chains and their fit to the electron density. The red, orange, yellow and green segments of the lower bar indicate the fraction of residues that contain outliers for ≥ 3 , 2, 1 and 0 types of geometric quality criteria respectively. A grey segment represents the fraction of residues that are not modelled. The numeric value for each fraction is indicated below the corresponding segment, with a dot representing fractions $\leq 5\%$. The upper red bar (where present) indicates the fraction of residues that have poor fit to the electron density. The numeric value is given above the bar.

Mol	Chain	Length	Quality of chain
1	A	386	
1	B	386	
2	F	212	
2	L	212	
3	E	224	

Continued on next page...

Continued from previous page...

Mol	Chain	Length	Quality of chain
3	H	224	 2% 85% 14%
4	C	2	 100%
4	D	2	 50% 50%

2 Entry composition [i](#)

There are 7 unique types of molecules in this entry. The entry contains 12932 atoms, of which 0 are hydrogens and 0 are deuteriums.

In the tables below, the ZeroOcc column contains the number of atoms modelled with zero occupancy, the AltConf column contains the number of residues with at least one atom in alternate conformation and the Trace column contains the number of residues modelled with at most 2 atoms.

- Molecule 1 is a protein called Neuraminidase.

Mol	Chain	Residues	Atoms					ZeroOcc	AltConf	Trace
			Total	C	N	O	S			
1	A	386	2983	1873	515	574	21	0	0	0
1	B	386	2983	1873	515	574	21	0	0	0

- Molecule 2 is a protein called neutralizing antibody, light chain.

Mol	Chain	Residues	Atoms					ZeroOcc	AltConf	Trace
			Total	C	N	O	S			
2	F	212	1635	1019	276	333	7	0	0	0
2	L	211	1626	1014	275	330	7	0	0	0

- Molecule 3 is a protein called neutralizing antibody, heavy chain.

Mol	Chain	Residues	Atoms					ZeroOcc	AltConf	Trace
			Total	C	N	O	S			
3	E	224	1704	1078	283	334	9	0	0	0
3	H	224	1704	1078	283	334	9	0	0	0

- Molecule 4 is an oligosaccharide called 2-acetamido-2-deoxy-beta-D-glucopyranose-(1-4)-2-acetamido-2-deoxy-beta-D-glucopyranose.



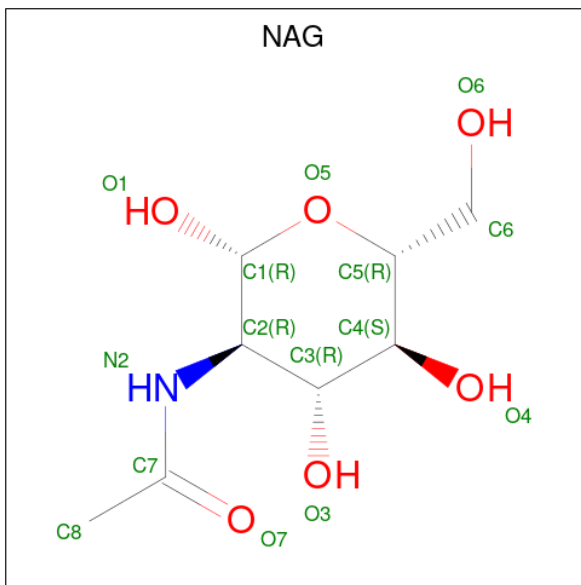
Mol	Chain	Residues	Atoms				ZeroOcc	AltConf	Trace
			Total	C	N	O			
4	C	2	28	16	2	10	0	0	0

Continued on next page...

Continued from previous page...

Mol	Chain	Residues	Atoms				ZeroOcc	AltConf	Trace
			Total	C	N	O			
4	D	2	28	16	2	10	0	0	0

- Molecule 5 is 2-acetamido-2-deoxy-beta-D-glucopyranose (three-letter code: NAG) (formula: $C_8H_{15}NO_6$).



Mol	Chain	Residues	Atoms				ZeroOcc	AltConf
			Total	C	N	O		
5	A	1	14	8	1	5	0	0
5	A	1	14	8	1	5	0	0
5	B	1	14	8	1	5	0	0
5	B	1	14	8	1	5	0	0

- Molecule 6 is CALCIUM ION (three-letter code: CA) (formula: Ca).

Mol	Chain	Residues	Atoms		ZeroOcc	AltConf
			Total	Ca		
6	A	2	2	2	0	0
6	B	2	2	2	0	0

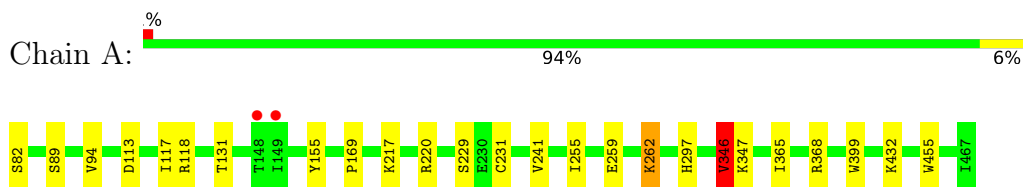
- Molecule 7 is water.

Mol	Chain	Residues	Atoms	ZeroOcc	AltConf
7	A	40	Total O 40 40	0	0
7	B	50	Total O 50 50	0	0
7	F	17	Total O 17 17	0	0
7	E	30	Total O 30 30	0	0
7	L	14	Total O 14 14	0	0
7	H	30	Total O 30 30	0	0

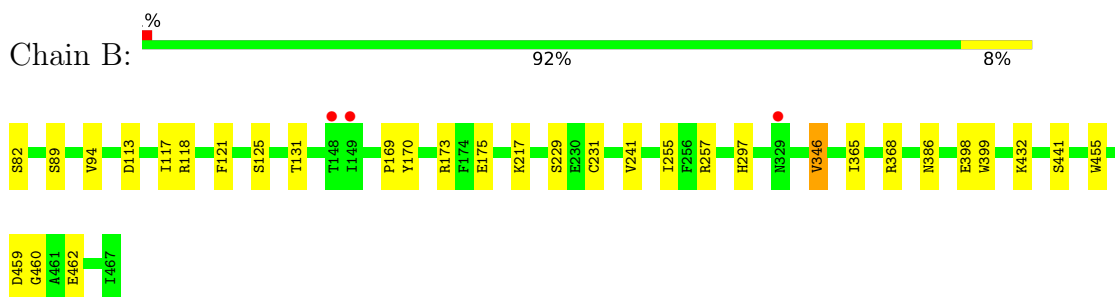
3 Residue-property plots [i](#)

These plots are drawn for all protein, RNA, DNA and oligosaccharide chains in the entry. The first graphic for a chain summarises the proportions of the various outlier classes displayed in the second graphic. The second graphic shows the sequence view annotated by issues in geometry and electron density. Residues are color-coded according to the number of geometric quality criteria for which they contain at least one outlier: green = 0, yellow = 1, orange = 2 and red = 3 or more. A red dot above a residue indicates a poor fit to the electron density ($RSRZ > 2$). Stretches of 2 or more consecutive residues without any outlier are shown as a green connector. Residues present in the sample, but not in the model, are shown in grey.

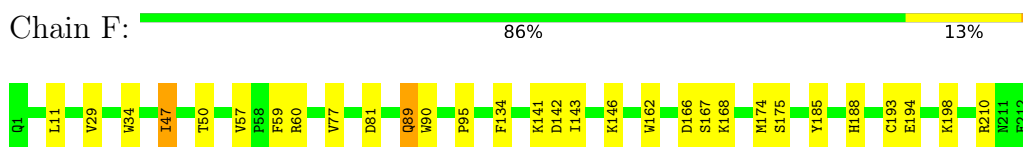
- Molecule 1: Neuraminidase



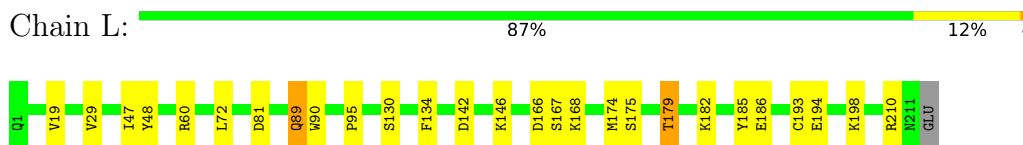
- Molecule 1: Neuraminidase



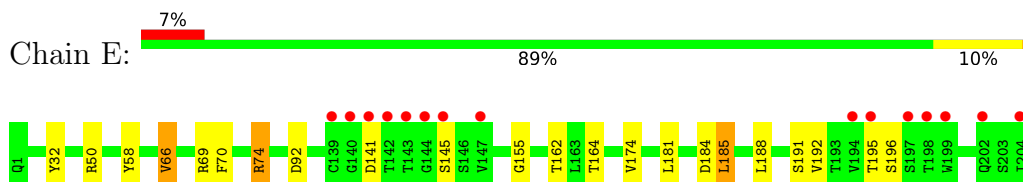
- Molecule 2: neutralizing antibody, light chain




- Molecule 2: neutralizing antibody, light chain

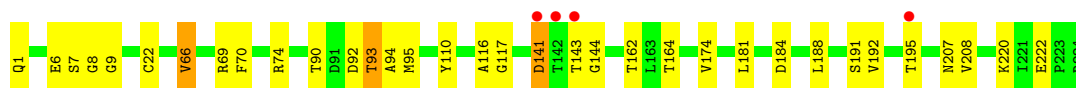


- Molecule 3: neutralizing antibody, heavy chain



- Molecule 3: neutralizing antibody, heavy chain

Chain H:  2% 85% 14%



- Molecule 4: 2-acetamido-2-deoxy-beta-D-glucopyranose-(1-4)-2-acetamido-2-deoxy-beta-D-glucopyranose

Chain C:  100%

MAG1
MAG2

- Molecule 4: 2-acetamido-2-deoxy-beta-D-glucopyranose-(1-4)-2-acetamido-2-deoxy-beta-D-glucopyranose

Chain D:  50% 50%

MAG1
MAG2

4 Data and refinement statistics

Property	Value	Source
Space group	C 2 2 2	Depositor
Cell constants a, b, c, α , β , γ	144.29Å 202.95Å 143.97Å 90.00° 90.00° 90.00°	Depositor
Resolution (Å)	47.85 – 2.80 47.85 – 2.80	Depositor EDS
% Data completeness (in resolution range)	92.9 (47.85-2.80) 92.9 (47.85-2.80)	Depositor EDS
R_{merge}	(Not available)	Depositor
R_{sym}	(Not available)	Depositor
$\langle I/\sigma(I) \rangle$ ¹	4.57 (at 2.81Å)	Xtrriage
Refinement program	REFMAC 5.8.0049	Depositor
R, R_{free}	0.181 , 0.224 0.188 , 0.227	Depositor DCC
R_{free} test set	2458 reflections (5.06%)	wwPDB-VP
Wilson B-factor (Å ²)	49.3	Xtrriage
Anisotropy	0.088	Xtrriage
Bulk solvent k_{sol} (e/Å ³), B_{sol} (Å ²)	0.31 , 36.9	EDS
L-test for twinning ²	$\langle L \rangle = 0.50$, $\langle L^2 \rangle = 0.33$	Xtrriage
Estimated twinning fraction	No twinning to report.	Xtrriage
F_o, F_c correlation	0.94	EDS
Total number of atoms	12932	wwPDB-VP
Average B, all atoms (Å ²)	48.0	wwPDB-VP

Xtrriage's analysis on translational NCS is as follows: *The largest off-origin peak in the Patterson function is 8.73% of the height of the origin peak. No significant pseudotranslation is detected.*

¹Intensities estimated from amplitudes.

²Theoretical values of $\langle |L| \rangle$, $\langle L^2 \rangle$ for acentric reflections are 0.5, 0.333 respectively for untwinned datasets, and 0.375, 0.2 for perfectly twinned datasets.

5 Model quality [i](#)

5.1 Standard geometry [i](#)

Bond lengths and bond angles in the following residue types are not validated in this section: NAG, CA

The Z score for a bond length (or angle) is the number of standard deviations the observed value is removed from the expected value. A bond length (or angle) with $|Z| > 5$ is considered an outlier worth inspection. RMSZ is the root-mean-square of all Z scores of the bond lengths (or angles).

Mol	Chain	Bond lengths		Bond angles	
		RMSZ	# Z >5	RMSZ	# Z >5
1	A	0.71	0/3065	0.80	1/4166 (0.0%)
1	B	0.71	0/3065	0.81	0/4166
2	F	0.64	0/1677	0.76	1/2282 (0.0%)
2	L	0.60	0/1668	0.76	1/2270 (0.0%)
3	E	0.62	0/1747	0.79	2/2384 (0.1%)
3	H	0.61	0/1747	0.80	0/2384
All	All	0.66	0/12969	0.79	5/17652 (0.0%)

Chiral center outliers are detected by calculating the chiral volume of a chiral center and verifying if the center is modelled as a planar moiety or with the opposite hand. A planarity outlier is detected by checking planarity of atoms in a peptide group, atoms in a mainchain group or atoms of a sidechain that are expected to be planar.

Mol	Chain	#Chirality outliers	#Planarity outliers
3	H	0	2

There are no bond length outliers.

All (5) bond angle outliers are listed below:

Mol	Chain	Res	Type	Atoms	Z	Observed(°)	Ideal(°)
2	L	193	CYS	CB-CA-C	-6.61	97.18	110.40
2	F	193	CYS	CB-CA-C	-6.23	97.94	110.40
3	E	50	ARG	NE-CZ-NH1	5.36	122.98	120.30
3	E	74	ARG	NE-CZ-NH1	5.23	122.92	120.30
1	A	346	VAL	CB-CA-C	-5.02	101.86	111.40

There are no chirality outliers.

All (2) planarity outliers are listed below:

Mol	Chain	Res	Type	Group
3	H	8	GLY	Peptide
3	H	9	GLY	Peptide

5.2 Too-close contacts [i](#)

In the following table, the Non-H and H(model) columns list the number of non-hydrogen atoms and hydrogen atoms in the chain respectively. The H(added) column lists the number of hydrogen atoms added and optimized by MolProbity. The Clashes column lists the number of clashes within the asymmetric unit, whereas Symm-Clashes lists symmetry-related clashes.

Mol	Chain	Non-H	H(model)	H(added)	Clashes	Symm-Clashes
1	A	2983	0	2815	12	0
1	B	2983	0	2815	13	0
2	F	1635	0	1559	19	0
2	L	1626	0	1553	19	0
3	E	1704	0	1668	15	0
3	H	1704	0	1668	21	0
4	C	28	0	25	0	0
4	D	28	0	25	0	1
5	A	28	0	26	1	0
5	B	28	0	26	1	0
6	A	2	0	0	0	0
6	B	2	0	0	0	0
7	A	40	0	0	0	0
7	B	50	0	0	1	0
7	E	30	0	0	0	0
7	F	17	0	0	0	0
7	H	30	0	0	1	0
7	L	14	0	0	0	0
All	All	12932	0	12180	91	1

The all-atom clashscore is defined as the number of clashes found per 1000 atoms (including hydrogen atoms). The all-atom clashscore for this structure is 4.

All (91) close contacts within the same asymmetric unit are listed below, sorted by their clash magnitude.

Atom-1	Atom-2	Interatomic distance (Å)	Clash overlap (Å)
3:H:90:THR:O	3:H:93:THR:HG23	1.72	0.90
1:B:89:SER:HA	5:B:502:NAG:H82	1.66	0.76
3:E:145:SER:O	3:E:196:SER:OG	2.04	0.76
3:H:6:GLU:OE2	3:H:116:ALA:O	2.02	0.76

Continued on next page...

Continued from previous page...

Atom-1	Atom-2	Interatomic distance (Å)	Clash overlap (Å)
3:H:1:GLN:O	7:H:326:HOH:O	2.11	0.68
1:B:170:TYR:O	7:B:605:HOH:O	2.13	0.66
2:F:185:TYR:CE2	2:F:210:ARG:HD2	2.31	0.65
1:A:89:SER:HA	5:A:504:NAG:H82	1.79	0.65
3:E:32:TYR:O	3:E:74:ARG:NH2	2.27	0.63
3:E:66:VAL:HG13	3:E:70:PHE:HB2	1.81	0.62
3:H:66:VAL:HG13	3:H:70:PHE:HB2	1.81	0.62
1:A:399:TRP:CZ3	1:A:432:LYS:HD3	2.35	0.61
1:B:399:TRP:CZ3	1:B:432:LYS:HD3	2.37	0.59
1:B:399:TRP:HZ3	1:B:432:LYS:HD3	1.67	0.59
2:F:34:TRP:HB2	2:F:47:ILE:HG23	1.87	0.57
2:F:47:ILE:HD11	2:F:50:THR:O	2.04	0.56
3:H:6:GLU:CD	3:H:116:ALA:O	2.45	0.55
1:A:399:TRP:HZ3	1:A:432:LYS:HD3	1.73	0.54
1:B:462:GLU:HA	1:B:462:GLU:OE1	2.08	0.54
3:E:155:GLY:HA2	3:E:185:LEU:HG	1.89	0.53
2:F:29:VAL:HG11	2:F:89:GLN:HG3	1.89	0.53
2:L:182:LYS:NZ	2:L:186:GLU:OE2	2.40	0.53
2:L:29:VAL:HG11	2:L:89:GLN:HG3	1.89	0.53
2:L:90:TRP:CD2	2:L:95:PRO:HB3	2.43	0.52
2:F:146:LYS:HB3	2:F:194:GLU:HB3	1.91	0.52
3:H:141:ASP:OD2	3:H:141:ASP:N	2.42	0.52
1:A:220:ARG:NH2	2:F:57:VAL:O	2.43	0.52
2:L:182:LYS:O	2:L:186:GLU:HG2	2.11	0.51
1:A:259:GLU:O	1:A:262:LYS:HG3	2.10	0.51
3:E:69:ARG:NH2	3:E:92:ASP:OD2	2.43	0.51
3:H:69:ARG:NH2	3:H:92:ASP:OD2	2.44	0.51
2:F:188:HIS:O	2:F:210:ARG:NH1	2.44	0.51
2:L:146:LYS:HB3	2:L:194:GLU:HB3	1.92	0.50
1:A:346:VAL:HG13	1:A:368:ARG:NE	2.26	0.50
2:F:162:TRP:HE1	2:F:174:MET:HE3	1.77	0.50
3:E:58:TYR:HE1	3:E:74:ARG:HD2	1.77	0.50
3:H:141:ASP:C	3:H:143:THR:HG23	2.32	0.50
2:L:134:PHE:CD2	3:H:191:SER:HB3	2.46	0.50
3:E:145:SER:O	3:E:196:SER:N	2.43	0.49
2:F:90:TRP:CD2	2:F:95:PRO:HB3	2.48	0.49
2:L:166:ASP:OD1	2:L:167:SER:N	2.46	0.49
2:F:143:ILE:HG23	2:F:174:MET:CE	2.43	0.48
2:F:174:MET:HG2	2:F:175:SER:N	2.27	0.48
3:E:162:THR:O	3:E:208:VAL:HA	2.14	0.48
1:A:113:ASP:O	1:A:169:PRO:HD2	2.14	0.47

Continued on next page...

Continued from previous page...

Atom-1	Atom-2	Interatomic distance (Å)	Clash overlap (Å)
3:H:162:THR:O	3:H:208:VAL:HA	2.14	0.47
3:H:164:THR:OG1	3:H:207:ASN:HB2	2.13	0.47
3:H:181:LEU:HD11	3:H:184:ASP:HA	1.96	0.47
3:H:141:ASP:O	3:H:143:THR:HG23	2.15	0.47
1:B:346:VAL:HG13	1:B:368:ARG:NE	2.30	0.47
2:F:166:ASP:OD1	2:F:168:LYS:N	2.47	0.46
1:B:173:ARG:HD2	1:B:175:GLU:OE2	2.16	0.46
3:E:181:LEU:HD11	3:E:184:ASP:HA	1.97	0.46
3:E:58:TYR:CE1	3:E:74:ARG:HD2	2.51	0.46
3:E:164:THR:OG1	3:E:207:ASN:HB2	2.14	0.46
2:L:174:MET:HG2	2:L:175:SER:N	2.32	0.45
2:F:134:PHE:CD2	3:E:191:SER:HB3	2.52	0.45
2:F:143:ILE:HG23	2:F:174:MET:HE1	1.98	0.45
2:L:60:ARG:NH2	2:L:81:ASP:OD1	2.46	0.45
2:L:166:ASP:OD1	2:L:168:LYS:N	2.48	0.45
1:B:241:VAL:HG22	1:B:255:ILE:HG22	1.99	0.45
2:F:162:TRP:NE1	2:F:174:MET:HE3	2.33	0.44
1:B:113:ASP:O	1:B:169:PRO:HD2	2.18	0.44
2:F:166:ASP:OD1	2:F:167:SER:N	2.50	0.44
2:L:185:TYR:CE2	2:L:210:ARG:HD3	2.53	0.44
1:A:155:TYR:CE1	1:B:460:GLY:HA3	2.53	0.44
2:L:47:ILE:HD11	2:L:72:LEU:HD13	2.00	0.44
2:L:130:SER:OG	2:L:179:THR:HB	2.17	0.44
1:A:241:VAL:HG22	1:A:255:ILE:HG22	1.99	0.43
3:E:145:SER:O	3:E:196:SER:CB	2.66	0.43
3:H:90:THR:O	3:H:93:THR:CG2	2.56	0.43
2:F:60:ARG:NH2	2:F:81:ASP:OD1	2.43	0.42
3:E:174:VAL:HG22	3:E:192:VAL:HG23	2.02	0.42
2:L:168:LYS:N	2:L:168:LYS:HD3	2.32	0.42
2:L:134:PHE:CE2	3:H:191:SER:HB3	2.54	0.42
3:H:95:MET:SD	3:H:117:GLY:HA3	2.59	0.42
1:A:229:SER:HB3	1:A:347:LYS:HE2	2.00	0.42
1:B:117:ILE:O	1:B:118:ARG:HG2	2.20	0.41
2:F:134:PHE:CE2	3:E:191:SER:HB3	2.55	0.41
2:L:182:LYS:O	2:L:186:GLU:CG	2.68	0.41
2:L:168:LYS:HD3	2:L:168:LYS:HA	1.86	0.41
3:H:174:VAL:HG22	3:H:192:VAL:HG23	2.03	0.41
1:A:117:ILE:O	1:A:118:ARG:HG2	2.21	0.41
2:L:185:TYR:CZ	2:L:210:ARG:HD3	2.55	0.41
1:A:220:ARG:HD2	2:F:59:PHE:CZ	2.55	0.41
3:H:220:LYS:HD3	3:H:222:GLU:OE2	2.21	0.40

Continued on next page...

Continued from previous page...

Atom-1	Atom-2	Interatomic distance (Å)	Clash overlap (Å)
1:B:121:PHE:CG	1:B:229:SER:HA	2.57	0.40
1:B:441:SER:CB	1:B:459:ASP:OD1	2.70	0.40
2:L:48:TYR:HB3	3:H:110:TYR:CD1	2.57	0.40
3:H:143:THR:OG1	3:H:144:GLY:N	2.54	0.40
3:H:93:THR:O	3:H:94:ALA:HB2	2.20	0.40

All (1) symmetry-related close contacts are listed below. The label for Atom-2 includes the symmetry operator and encoded unit-cell translations to be applied.

Atom-1	Atom-2	Interatomic distance (Å)	Clash overlap (Å)
4:D:2:NAG:O6	4:D:2:NAG:O6[2_655]	2.12	0.08

5.3 Torsion angles [i](#)

5.3.1 Protein backbone [i](#)

In the following table, the Percentiles column shows the percent Ramachandran outliers of the chain as a percentile score with respect to all X-ray entries followed by that with respect to entries of similar resolution.

The Analysed column shows the number of residues for which the backbone conformation was analysed, and the total number of residues.

Mol	Chain	Analysed	Favoured	Allowed	Outliers	Percentiles	
1	A	384/386 (100%)	366 (95%)	18 (5%)	0	100	100
1	B	384/386 (100%)	366 (95%)	18 (5%)	0	100	100
2	F	210/212 (99%)	205 (98%)	5 (2%)	0	100	100
2	L	209/212 (99%)	203 (97%)	6 (3%)	0	100	100
3	E	222/224 (99%)	209 (94%)	13 (6%)	0	100	100
3	H	222/224 (99%)	205 (92%)	17 (8%)	0	100	100
All	All	1631/1644 (99%)	1554 (95%)	77 (5%)	0	100	100

There are no Ramachandran outliers to report.

5.3.2 Protein sidechains [i](#)

In the following table, the Percentiles column shows the percent sidechain outliers of the chain as a percentile score with respect to all X-ray entries followed by that with respect to entries of similar resolution.

The Analysed column shows the number of residues for which the sidechain conformation was analysed, and the total number of residues.

Mol	Chain	Analysed	Rotameric	Outliers	Percentiles	
1	A	333/333 (100%)	323 (97%)	10 (3%)	41	75
1	B	333/333 (100%)	320 (96%)	13 (4%)	32	66
2	F	187/187 (100%)	180 (96%)	7 (4%)	34	68
2	L	186/187 (100%)	181 (97%)	5 (3%)	44	78
3	E	192/192 (100%)	186 (97%)	6 (3%)	40	74
3	H	192/192 (100%)	184 (96%)	8 (4%)	30	63
All	All	1423/1424 (100%)	1374 (97%)	49 (3%)	37	71

All (49) residues with a non-rotameric sidechain are listed below:

Mol	Chain	Res	Type
1	A	82	SER
1	A	94	VAL
1	A	131	THR
1	A	217	LYS
1	A	231	CYS
1	A	262	LYS
1	A	297	HIS
1	A	346	VAL
1	A	365	ILE
1	A	455	TRP
1	B	82	SER
1	B	94	VAL
1	B	125	SER
1	B	131	THR
1	B	217	LYS
1	B	231	CYS
1	B	257	ARG
1	B	297	HIS
1	B	346	VAL
1	B	365	ILE
1	B	386	ASN
1	B	398	GLU

Continued on next page...

Continued from previous page...

Mol	Chain	Res	Type
1	B	455	TRP
2	F	11	LEU
2	F	47	ILE
2	F	77	VAL
2	F	89	GLN
2	F	141	LYS
2	F	142	ASP
2	F	198	LYS
3	E	66	VAL
3	E	141	ASP
3	E	185	LEU
3	E	188	LEU
3	E	195	THR
3	E	224	ARG
2	L	19	VAL
2	L	89	GLN
2	L	142	ASP
2	L	179	THR
2	L	198	LYS
3	H	7	SER
3	H	22	CYS
3	H	66	VAL
3	H	74	ARG
3	H	93	THR
3	H	141	ASP
3	H	188	LEU
3	H	195	THR

Sometimes sidechains can be flipped to improve hydrogen bonding and reduce clashes. All (5) such sidechains are listed below:

Mol	Chain	Res	Type
1	B	221	ASN
3	E	56	ASN
3	E	78	GLN
2	L	89	GLN
3	H	78	GLN

5.3.3 RNA [i](#)

There are no RNA molecules in this entry.

5.4 Non-standard residues in protein, DNA, RNA chains [i](#)

There are no non-standard protein/DNA/RNA residues in this entry.

5.5 Carbohydrates [i](#)

4 monosaccharides are modelled in this entry.

In the following table, the Counts columns list the number of bonds (or angles) for which Mogul statistics could be retrieved, the number of bonds (or angles) that are observed in the model and the number of bonds (or angles) that are defined in the Chemical Component Dictionary. The Link column lists molecule types, if any, to which the group is linked. The Z score for a bond length (or angle) is the number of standard deviations the observed value is removed from the expected value. A bond length (or angle) with $|Z| > 2$ is considered an outlier worth inspection. RMSZ is the root-mean-square of all Z scores of the bond lengths (or angles).

Mol	Type	Chain	Res	Link	Bond lengths			Bond angles		
					Counts	RMSZ	# Z > 2	Counts	RMSZ	# Z > 2
4	NAG	C	1	4,1	14,14,15	0.68	0	17,19,21	1.33	2 (11%)
4	NAG	C	2	4	14,14,15	0.75	0	17,19,21	1.62	5 (29%)
4	NAG	D	1	4,1	14,14,15	0.67	0	17,19,21	1.33	2 (11%)
4	NAG	D	2	4	14,14,15	0.76	0	17,19,21	1.62	5 (29%)

In the following table, the Chirals column lists the number of chiral outliers, the number of chiral centers analysed, the number of these observed in the model and the number defined in the Chemical Component Dictionary. Similar counts are reported in the Torsion and Rings columns. '-' means no outliers of that kind were identified.

Mol	Type	Chain	Res	Link	Chirals	Torsions	Rings
4	NAG	C	1	4,1	-	2/6/23/26	0/1/1/1
4	NAG	C	2	4	-	2/6/23/26	0/1/1/1
4	NAG	D	1	4,1	-	2/6/23/26	0/1/1/1
4	NAG	D	2	4	-	2/6/23/26	0/1/1/1

There are no bond length outliers.

All (14) bond angle outliers are listed below:

Mol	Chain	Res	Type	Atoms	Z	Observed(°)	Ideal(°)
4	D	1	NAG	C1-O5-C5	3.94	117.54	112.19
4	C	1	NAG	C1-O5-C5	3.93	117.52	112.19
4	D	1	NAG	C1-C2-N2	-3.09	105.21	110.49
4	C	1	NAG	C1-C2-N2	-3.08	105.22	110.49

Continued on next page...

Continued from previous page...

Mol	Chain	Res	Type	Atoms	Z	Observed(°)	Ideal(°)
4	D	2	NAG	O7-C7-C8	-2.87	116.73	122.06
4	C	2	NAG	O7-C7-C8	-2.85	116.76	122.06
4	D	2	NAG	O5-C5-C6	2.54	111.19	107.20
4	C	2	NAG	O5-C5-C6	2.53	111.17	107.20
4	C	2	NAG	O3-C3-C2	2.39	114.42	109.47
4	D	2	NAG	O3-C3-C2	2.38	114.39	109.47
4	C	2	NAG	C2-N2-C7	2.33	126.23	122.90
4	D	2	NAG	C2-N2-C7	2.32	126.20	122.90
4	D	2	NAG	C4-C3-C2	-2.17	107.84	111.02
4	C	2	NAG	C4-C3-C2	-2.16	107.86	111.02

There are no chirality outliers.

All (8) torsion outliers are listed below:

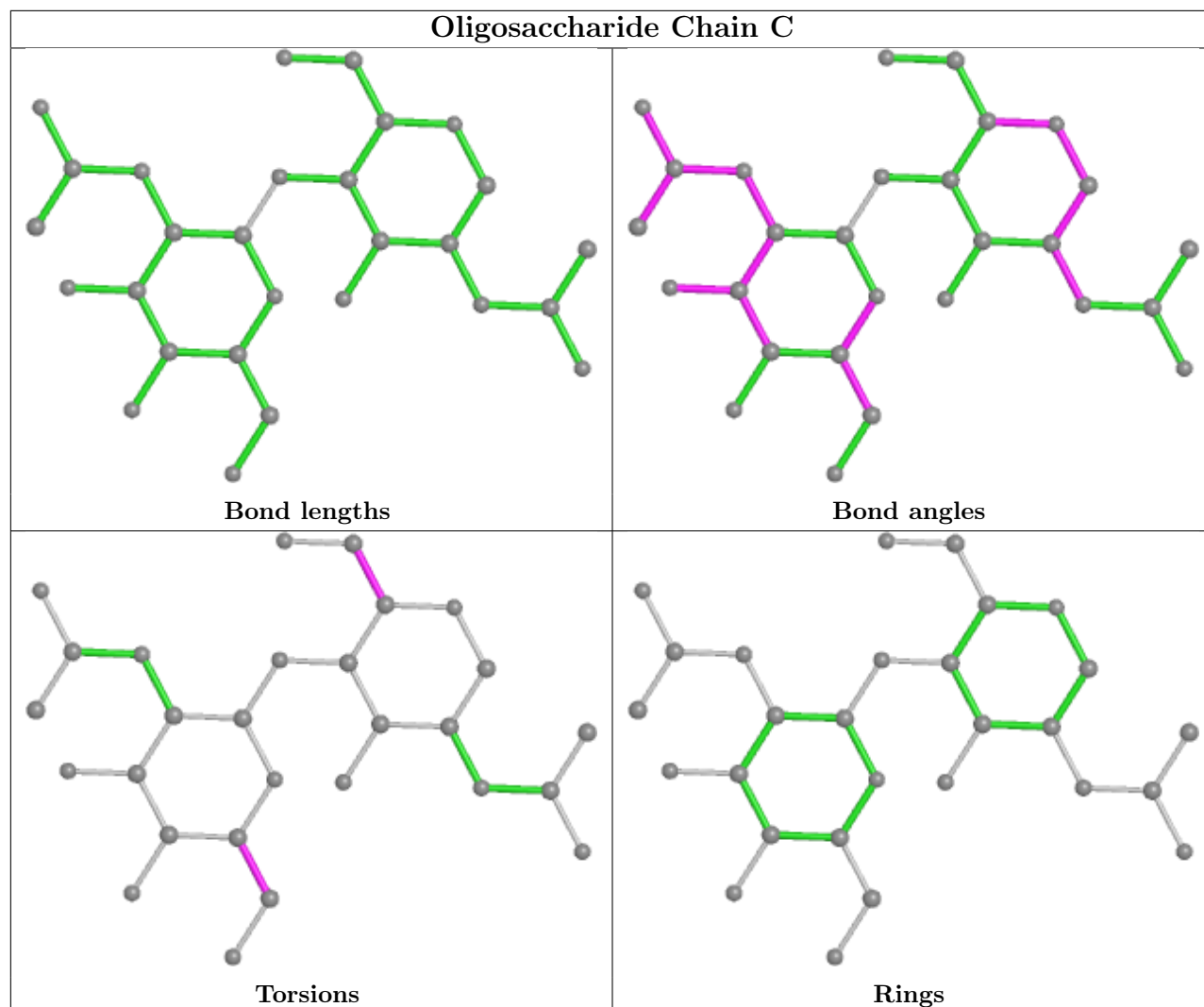
Mol	Chain	Res	Type	Atoms
4	C	2	NAG	O5-C5-C6-O6
4	D	2	NAG	O5-C5-C6-O6
4	D	2	NAG	C4-C5-C6-O6
4	C	2	NAG	C4-C5-C6-O6
4	C	1	NAG	C4-C5-C6-O6
4	D	1	NAG	C4-C5-C6-O6
4	C	1	NAG	O5-C5-C6-O6
4	D	1	NAG	O5-C5-C6-O6

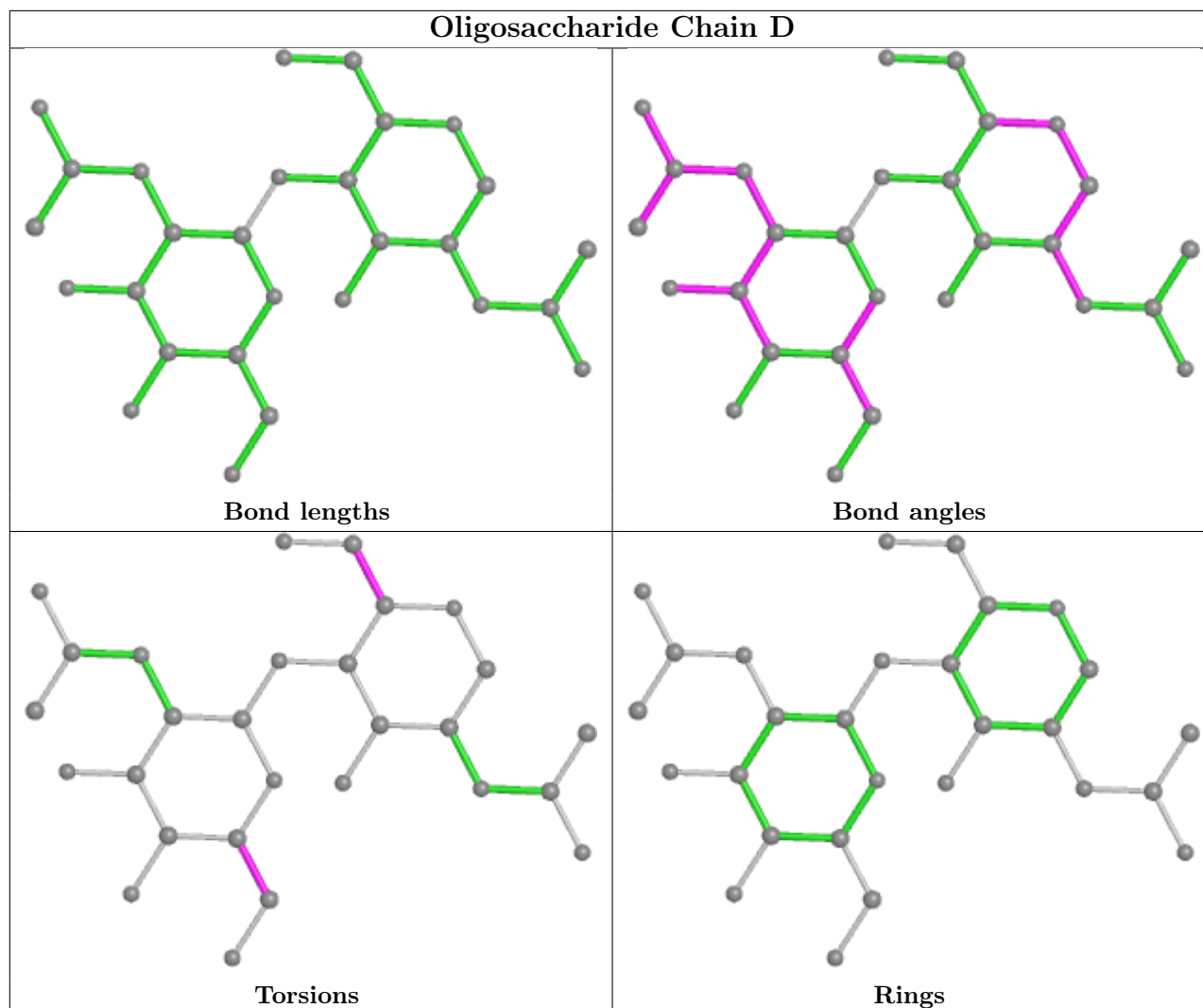
There are no ring outliers.

1 monomer is involved in 1 short contact:

Mol	Chain	Res	Type	Clashes	Symm-Clashes
4	D	2	NAG	0	1

The following is a two-dimensional graphical depiction of Mogul quality analysis of bond lengths, bond angles, torsion angles, and ring geometry for oligosaccharide.





5.6 Ligand geometry [i](#)

Of 8 ligands modelled in this entry, 4 are monoatomic - leaving 4 for Mogul analysis.

In the following table, the Counts columns list the number of bonds (or angles) for which Mogul statistics could be retrieved, the number of bonds (or angles) that are observed in the model and the number of bonds (or angles) that are defined in the Chemical Component Dictionary. The Link column lists molecule types, if any, to which the group is linked. The Z score for a bond length (or angle) is the number of standard deviations the observed value is removed from the expected value. A bond length (or angle) with $|Z| > 2$ is considered an outlier worth inspection. RMSZ is the root-mean-square of all Z scores of the bond lengths (or angles).

Mol	Type	Chain	Res	Link	Bond lengths			Bond angles		
					Counts	RMSZ	# Z > 2	Counts	RMSZ	# Z > 2
5	NAG	B	501	1	14,14,15	0.59	0	17,19,21	1.77	4 (23%)
5	NAG	A	503	1	14,14,15	0.86	0	17,19,21	2.34	2 (11%)
5	NAG	B	502	1	14,14,15	0.50	0	17,19,21	1.54	3 (17%)

Mol	Type	Chain	Res	Link	Bond lengths			Bond angles		
					Counts	RMSZ	# Z > 2	Counts	RMSZ	# Z > 2
5	NAG	A	504	1	14,14,15	0.57	0	17,19,21	1.77	6 (35%)

In the following table, the Chirals column lists the number of chiral outliers, the number of chiral centers analysed, the number of these observed in the model and the number defined in the Chemical Component Dictionary. Similar counts are reported in the Torsion and Rings columns. '-' means no outliers of that kind were identified.

Mol	Type	Chain	Res	Link	Chirals	Torsions	Rings
5	NAG	B	501	1	-	0/6/23/26	0/1/1/1
5	NAG	A	503	1	-	0/6/23/26	0/1/1/1
5	NAG	B	502	1	-	0/6/23/26	0/1/1/1
5	NAG	A	504	1	-	0/6/23/26	0/1/1/1

There are no bond length outliers.

All (15) bond angle outliers are listed below:

Mol	Chain	Res	Type	Atoms	Z	Observed(°)	Ideal(°)
5	A	503	NAG	C1-O5-C5	7.54	122.41	112.19
5	A	503	NAG	O5-C5-C6	4.75	114.66	107.20
5	A	504	NAG	O5-C5-C6	3.96	113.41	107.20
5	B	501	NAG	O5-C5-C6	3.64	112.90	107.20
5	B	501	NAG	C1-C2-N2	3.22	115.99	110.49
5	B	501	NAG	O7-C7-C8	-3.07	116.35	122.06
5	B	502	NAG	O5-C5-C6	2.92	111.78	107.20
5	B	502	NAG	C2-N2-C7	2.80	126.89	122.90
5	A	504	NAG	C1-O5-C5	2.78	115.96	112.19
5	B	501	NAG	C1-O5-C5	2.75	115.92	112.19
5	A	504	NAG	C3-C4-C5	-2.24	106.24	110.24
5	A	504	NAG	O7-C7-C8	-2.12	118.12	122.06
5	B	502	NAG	O5-C5-C4	-2.11	105.70	110.83
5	A	504	NAG	C4-C3-C2	-2.06	108.01	111.02
5	A	504	NAG	O4-C4-C5	2.01	114.28	109.30

There are no chirality outliers.

There are no torsion outliers.

There are no ring outliers.

2 monomers are involved in 2 short contacts:

Mol	Chain	Res	Type	Clashes	Symm-Clashes
5	B	502	NAG	1	0

Continued on next page...

Continued from previous page...

Mol	Chain	Res	Type	Clashes	Symm-Clashes
5	A	504	NAG	1	0

5.7 Other polymers [i](#)

There are no such residues in this entry.

5.8 Polymer linkage issues [i](#)

There are no chain breaks in this entry.

6 Fit of model and data

6.1 Protein, DNA and RNA chains

In the following table, the column labelled ‘#RSRZ> 2’ contains the number (and percentage) of RSRZ outliers, followed by percent RSRZ outliers for the chain as percentile scores relative to all X-ray entries and entries of similar resolution. The OWAB column contains the minimum, median, 95th percentile and maximum values of the occupancy-weighted average B-factor per residue. The column labelled ‘Q< 0.9’ lists the number of (and percentage) of residues with an average occupancy less than 0.9.

Mol	Chain	Analysed	<RSRZ>	#RSRZ>2	OWAB(Å ²)	Q<0.9
1	A	386/386 (100%)	-0.38	2 (0%) 91 88	29, 40, 62, 109	0
1	B	386/386 (100%)	-0.27	3 (0%) 86 81	27, 40, 65, 107	0
2	F	212/212 (100%)	-0.24	0 100 100	32, 49, 69, 118	0
2	L	211/212 (99%)	-0.32	0 100 100	34, 48, 72, 94	0
3	E	224/224 (100%)	-0.08	15 (6%) 17 10	31, 50, 92, 140	0
3	H	224/224 (100%)	-0.28	4 (1%) 68 61	31, 48, 79, 135	0
All	All	1643/1644 (99%)	-0.27	24 (1%) 73 68	27, 44, 76, 140	0

All (24) RSRZ outliers are listed below:

Mol	Chain	Res	Type	RSRZ
3	E	141	ASP	7.1
3	E	143	THR	5.5
3	E	142	THR	5.4
3	H	142	THR	3.5
1	A	148	THR	3.4
3	H	141	ASP	3.3
3	E	144	GLY	3.2
3	E	197	SER	3.0
1	B	148	THR	3.0
3	E	140	GLY	2.7
3	H	143	THR	2.5
3	E	194	VAL	2.5
3	E	195	THR	2.5
3	E	139	CYS	2.4
3	E	147	VAL	2.4
3	E	198	THR	2.4
1	A	149	ILE	2.3
3	H	195	THR	2.3
3	E	204	ILE	2.2

Continued on next page...

Continued from previous page...

Mol	Chain	Res	Type	RSRZ
1	B	149	ILE	2.2
3	E	199	TRP	2.2
3	E	202	GLN	2.2
3	E	145	SER	2.2
1	B	329	ASN	2.0

6.2 Non-standard residues in protein, DNA, RNA chains [\(i\)](#)

There are no non-standard protein/DNA/RNA residues in this entry.

6.3 Carbohydrates [\(i\)](#)

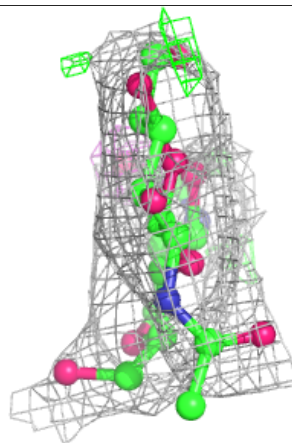
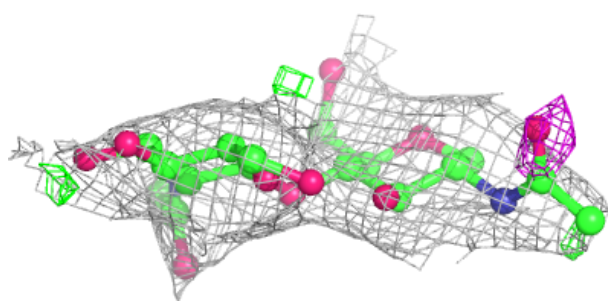
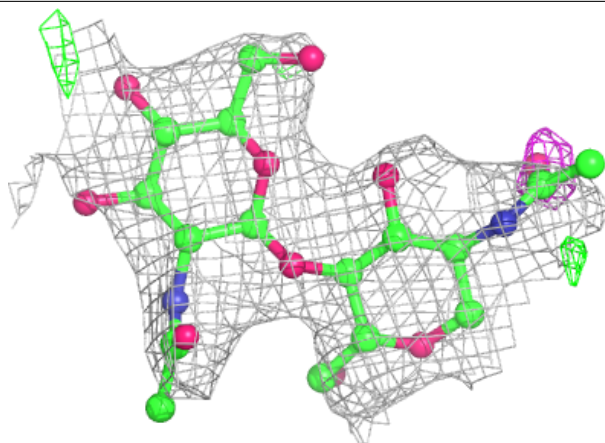
In the following table, the Atoms column lists the number of modelled atoms in the group and the number defined in the chemical component dictionary. The B-factors column lists the minimum, median, 95th percentile and maximum values of B factors of atoms in the group. The column labelled 'Q< 0.9' lists the number of atoms with occupancy less than 0.9.

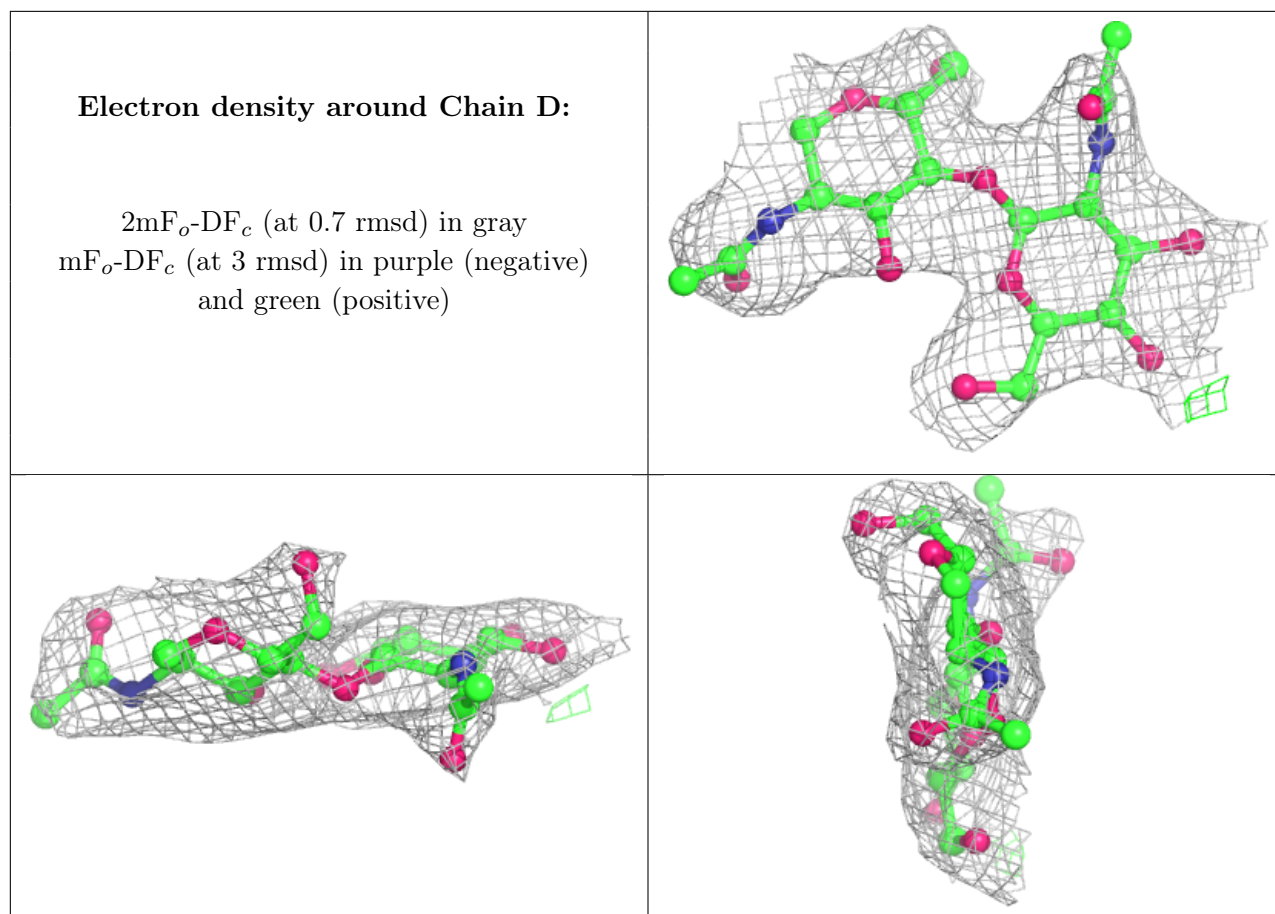
Mol	Type	Chain	Res	Atoms	RSCC	RSR	B-factors(Å ²)	Q<0.9
4	NAG	C	2	14/15	0.81	0.28	66,77,82,82	0
4	NAG	C	1	14/15	0.89	0.26	66,78,85,89	0
4	NAG	D	2	14/15	0.89	0.32	66,77,82,82	0
4	NAG	D	1	14/15	0.94	0.23	66,78,85,88	0

The following is a graphical depiction of the model fit to experimental electron density for oligosaccharide. Each fit is shown from different orientation to approximate a three-dimensional view.

Electron density around Chain C:

$2mF_o-DF_c$ (at 0.7 rmsd) in gray
 mF_o-DF_c (at 3 rmsd) in purple (negative)
and green (positive)





6.4 Ligands [i](#)

In the following table, the Atoms column lists the number of modelled atoms in the group and the number defined in the chemical component dictionary. The B-factors column lists the minimum, median, 95th percentile and maximum values of B factors of atoms in the group. The column labelled 'Q< 0.9' lists the number of atoms with occupancy less than 0.9.

Mol	Type	Chain	Res	Atoms	RSCC	RSR	B-factors(Å ²)	Q<0.9
5	NAG	A	503	14/15	0.74	0.26	79,89,95,98	0
5	NAG	B	502	14/15	0.87	0.28	63,72,87,93	0
6	CA	A	506	1/1	0.88	0.08	91,91,91,91	0
5	NAG	A	504	14/15	0.89	0.17	66,77,87,90	0
5	NAG	B	501	14/15	0.89	0.29	69,85,91,96	0
6	CA	B	506	1/1	0.93	0.11	88,88,88,88	0
6	CA	B	505	1/1	0.96	0.14	72,72,72,72	0
6	CA	A	505	1/1	0.96	0.16	75,75,75,75	0

6.5 Other polymers [i](#)

There are no such residues in this entry.