



Full wwPDB X-ray Structure Validation Report ⓘ

Sep 13, 2023 – 10:14 AM EDT

PDB ID : 4QNE
Title : Inosine 5'-monophosphate dehydrogenase from *Vibrio cholerae*, deletion mutant, in complex with NAD and IMP
Authors : Osipiuk, J.; Maltseva, N.; Makowska-Grzyska, M.; Gu, M.; Anderson, W.F.; Joachimiak, A.; Center for Structural Genomics of Infectious Diseases (CS-GID)
Deposited on : 2014-06-17
Resolution : 2.32 Å(reported)

This is a Full wwPDB X-ray Structure Validation Report for a publicly released PDB entry.

We welcome your comments at validation@mail.wwpdb.org

A user guide is available at

<https://www.wwpdb.org/validation/2017/XrayValidationReportHelp>

with specific help available everywhere you see the ⓘ symbol.

The types of validation reports are described at

<http://www.wwpdb.org/validation/2017/FAQs#types>.

The following versions of software and data (see [references](#) ①) were used in the production of this report:

MolProbity : 4.02b-467
Mogul : 1.8.5 (274361), CSD as541be (2020)
Xtrriage (Phenix) : 1.13
EDS : 2.35.1
buster-report : 1.1.7 (2018)
Percentile statistics : 20191225.v01 (using entries in the PDB archive December 25th 2019)
Refmac : 5.8.0158
CCP4 : 7.0.044 (Gargrove)
Ideal geometry (proteins) : Engh & Huber (2001)
Ideal geometry (DNA, RNA) : Parkinson et al. (1996)
Validation Pipeline (wwPDB-VP) : 2.35.1

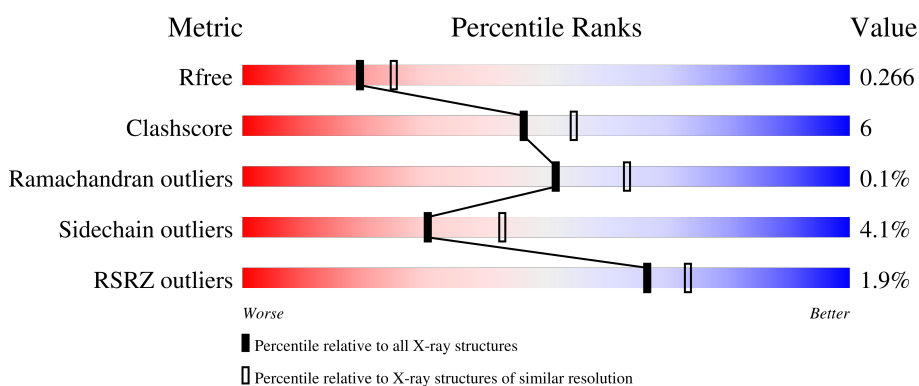
1 Overall quality at a glance i

The following experimental techniques were used to determine the structure:

X-RAY DIFFRACTION

The reported resolution of this entry is 2.32 Å.

Percentile scores (ranging between 0-100) for global validation metrics of the entry are shown in the following graphic. The table shows the number of entries on which the scores are based.



Metric	Whole archive (#Entries)	Similar resolution (#Entries, resolution range(Å))
R_{free}	130704	5974 (2.34-2.30)
Clashscore	141614	6604 (2.34-2.30)
Ramachandran outliers	138981	6523 (2.34-2.30)
Sidechain outliers	138945	6523 (2.34-2.30)
RSRZ outliers	127900	5855 (2.34-2.30)

The table below summarises the geometric issues observed across the polymeric chains and their fit to the electron density. The red, orange, yellow and green segments of the lower bar indicate the fraction of residues that contain outliers for ≥ 3 , 2, 1 and 0 types of geometric quality criteria respectively. A grey segment represents the fraction of residues that are not modelled. The numeric value for each fraction is indicated below the corresponding segment, with a dot representing fractions $\leq 5\%$. The upper red bar (where present) indicates the fraction of residues that have poor fit to the electron density. The numeric value is given above the bar.

Mol	Chain	Length	Quality of chain
1	A	366	<div style="display: flex; align-items: center;"> <div style="width: 2%; height: 10px; background-color: red; margin-right: 5px;"></div> <div style="width: 83%; height: 10px; background-color: green; margin-right: 5px;"></div> <div style="width: 10%; height: 10px; background-color: yellow; margin-right: 5px;"></div> <div style="width: 7%; height: 10px; background-color: grey;"></div> </div>
1	B	366	<div style="display: flex; align-items: center;"> <div style="width: 2%; height: 10px; background-color: red; margin-right: 5px;"></div> <div style="width: 78%; height: 10px; background-color: green; margin-right: 5px;"></div> <div style="width: 14%; height: 10px; background-color: yellow; margin-right: 5px;"></div> <div style="width: 7%; height: 10px; background-color: grey;"></div> </div>

2 Entry composition

There are 5 unique types of molecules in this entry. The entry contains 5409 atoms, of which 0 are hydrogens and 0 are deuteriums.

In the tables below, the ZeroOcc column contains the number of atoms modelled with zero occupancy, the AltConf column contains the number of residues with at least one atom in alternate conformation and the Trace column contains the number of residues modelled with at most 2 atoms.

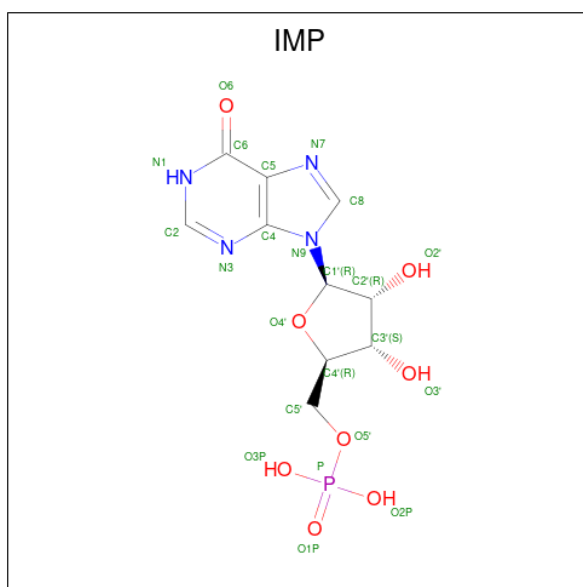
- Molecule 1 is a protein called Inosine 5'-monophosphate dehydrogenase.

Mol	Chain	Residues	Atoms					ZeroOcc	AltConf	Trace
			Total	C	N	O	S			
1	A	342	2530	1582	454	480	14	0	7	0
1	B	342	2545	1590	457	484	14	0	9	0

There are 12 discrepancies between the modelled and reference sequences:

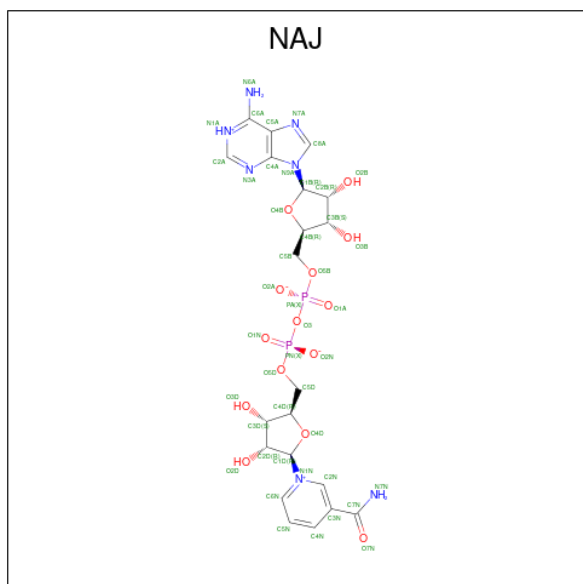
Chain	Residue	Modelled	Actual	Comment	Reference
A	-2	SER	-	expression tag	UNP Q9KTW3
A	-1	ASN	-	expression tag	UNP Q9KTW3
A	0	ALA	-	expression tag	UNP Q9KTW3
A	91	SER	-	linker	UNP Q9KTW3
A	92	GLY	-	linker	UNP Q9KTW3
A	93	GLY	-	linker	UNP Q9KTW3
B	-2	SER	-	expression tag	UNP Q9KTW3
B	-1	ASN	-	expression tag	UNP Q9KTW3
B	0	ALA	-	expression tag	UNP Q9KTW3
B	91	SER	-	linker	UNP Q9KTW3
B	92	GLY	-	linker	UNP Q9KTW3
B	93	GLY	-	linker	UNP Q9KTW3

- Molecule 2 is INOSINIC ACID (three-letter code: IMP) (formula: C₁₀H₁₃N₄O₈P).



Mol	Chain	Residues	Atoms					ZeroOcc	AltConf
2	A	1	Total	C	N	O	P	0	1
			33	15	8	9	1		
2	B	1	Total	C	N	O	P	0	1
			33	15	8	9	1		

- Molecule 3 is NICOTINAMIDE-ADENINE-DINUCLEOTIDE (ACIDIC FORM) (three-letter code: NAJ) (formula: $C_{21}H_{27}N_7O_{14}P_2$).



Mol	Chain	Residues	Atoms					ZeroOcc	AltConf
3	A	1	Total	C	N	O	P	0	0
			44	21	7	14	2		

Continued on next page...

Continued from previous page...

Mol	Chain	Residues	Atoms					ZeroOcc	AltConf
3	B	1	Total	C	N	O	P	0	0
			44	21	7	14	2		

- Molecule 4 is POTASSIUM ION (three-letter code: K) (formula: K).

Mol	Chain	Residues	Atoms		ZeroOcc	AltConf
4	A	1	Total	K	0	0
			1	1		
4	B	1	Total	K	0	0
			1	1		

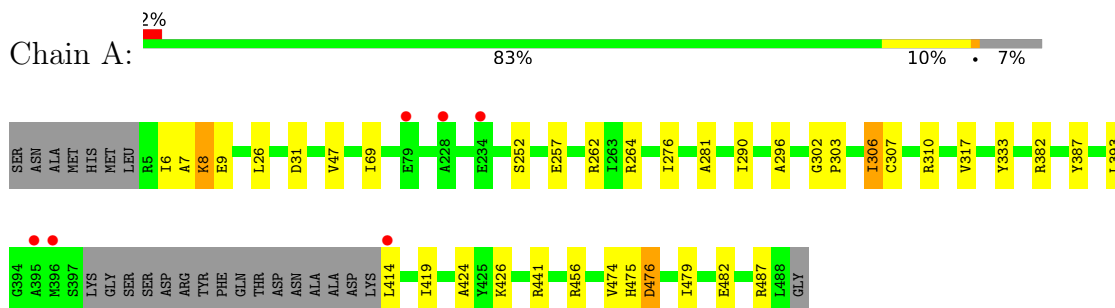
- Molecule 5 is water.

Mol	Chain	Residues	Atoms		ZeroOcc	AltConf
5	A	103	Total	O	0	0
			103	103		
5	B	75	Total	O	0	0
			75	75		

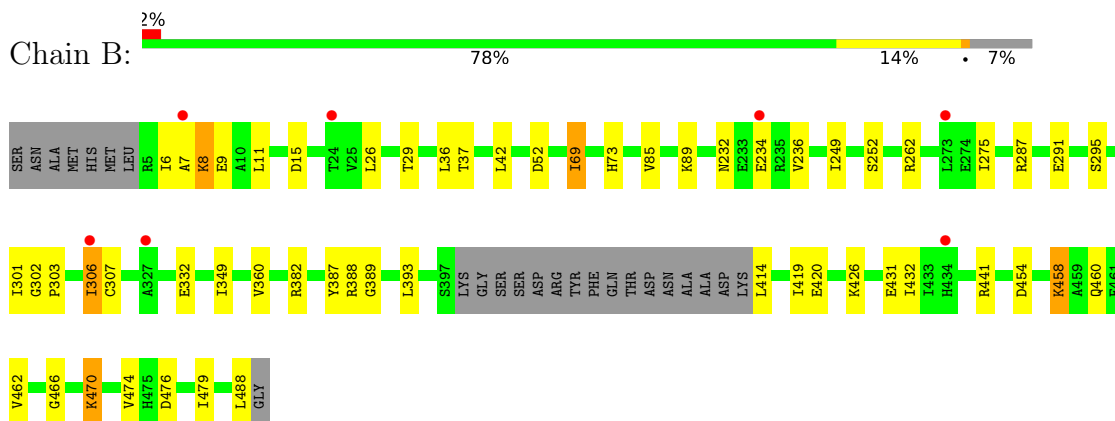
3 Residue-property plots [i](#)

These plots are drawn for all protein, RNA, DNA and oligosaccharide chains in the entry. The first graphic for a chain summarises the proportions of the various outlier classes displayed in the second graphic. The second graphic shows the sequence view annotated by issues in geometry and electron density. Residues are color-coded according to the number of geometric quality criteria for which they contain at least one outlier: green = 0, yellow = 1, orange = 2 and red = 3 or more. A red dot above a residue indicates a poor fit to the electron density ($RSRZ > 2$). Stretches of 2 or more consecutive residues without any outlier are shown as a green connector. Residues present in the sample, but not in the model, are shown in grey.

- Molecule 1: Inosine 5'-monophosphate dehydrogenase



- Molecule 1: Inosine 5'-monophosphate dehydrogenase



4 Data and refinement statistics

Property	Value	Source
Space group	P 4 21 2	Depositor
Cell constants a, b, c, α , β , γ	121.33Å 121.33Å 94.47Å 90.00° 90.00° 90.00°	Depositor
Resolution (Å)	47.50 – 2.32 47.05 – 2.32	Depositor EDS
% Data completeness (in resolution range)	99.0 (47.50-2.32) 99.1 (47.05-2.32)	Depositor EDS
R_{merge}	0.10	Depositor
R_{sym}	(Not available)	Depositor
$\langle I/\sigma(I) \rangle$ ¹	2.36 (at 2.32Å)	Xtrriage
Refinement program	REFMAC 5.8.0071	Depositor
R, R_{free}	0.196 , 0.270 0.202 , 0.266	Depositor DCC
R_{free} test set	1553 reflections (5.03%)	wwPDB-VP
Wilson B-factor (Å ²)	40.4	Xtrriage
Anisotropy	0.248	Xtrriage
Bulk solvent k_{sol} (e/Å ³), B_{sol} (Å ²)	0.36 , 39.5	EDS
L-test for twinning ²	$\langle L \rangle = 0.51$, $\langle L^2 \rangle = 0.35$	Xtrriage
Estimated twinning fraction	No twinning to report.	Xtrriage
F_o, F_c correlation	0.96	EDS
Total number of atoms	5409	wwPDB-VP
Average B, all atoms (Å ²)	44.0	wwPDB-VP

Xtrriage's analysis on translational NCS is as follows: *The analyses of the Patterson function reveals a significant off-origin peak that is 48.58 % of the origin peak, indicating pseudo-translational symmetry. The chance of finding a peak of this or larger height randomly in a structure without pseudo-translational symmetry is equal to 8.4342e-05. The detected translational NCS is most likely also responsible for the elevated intensity ratio.*

¹Intensities estimated from amplitudes.

²Theoretical values of $\langle |L| \rangle$, $\langle L^2 \rangle$ for acentric reflections are 0.5, 0.333 respectively for untwinned datasets, and 0.375, 0.2 for perfectly twinned datasets.

5 Model quality [i](#)

5.1 Standard geometry [i](#)

Bond lengths and bond angles in the following residue types are not validated in this section: K, NAJ, IMP

The Z score for a bond length (or angle) is the number of standard deviations the observed value is removed from the expected value. A bond length (or angle) with $|Z| > 5$ is considered an outlier worth inspection. RMSZ is the root-mean-square of all Z scores of the bond lengths (or angles).

Mol	Chain	Bond lengths		Bond angles	
		RMSZ	# Z >5	RMSZ	# Z >5
1	A	0.84	0/2583	0.93	4/3490 (0.1%)
1	B	0.76	0/2604	0.91	2/3517 (0.1%)
All	All	0.80	0/5187	0.92	6/7007 (0.1%)

Chiral center outliers are detected by calculating the chiral volume of a chiral center and verifying if the center is modelled as a planar moiety or with the opposite hand. A planarity outlier is detected by checking planarity of atoms in a peptide group, atoms in a mainchain group or atoms of a sidechain that are expected to be planar.

Mol	Chain	#Chirality outliers	#Planarity outliers
1	B	0	1

There are no bond length outliers.

All (6) bond angle outliers are listed below:

Mol	Chain	Res	Type	Atoms	Z	Observed($^{\circ}$)	Ideal($^{\circ}$)
1	A	476	ASP	CB-CG-OD2	6.11	123.80	118.30
1	A	441	ARG	NE-CZ-NH1	6.11	123.35	120.30
1	B	476	ASP	CB-CG-OD1	-6.04	112.87	118.30
1	B	441	ARG	NE-CZ-NH2	-5.74	117.43	120.30
1	A	456	ARG	NE-CZ-NH2	5.56	123.08	120.30
1	A	31	ASP	CB-CG-OD1	5.24	123.01	118.30

There are no chirality outliers.

All (1) planarity outliers are listed below:

Mol	Chain	Res	Type	Group
1	B	7	ALA	Peptide

5.2 Too-close contacts

In the following table, the Non-H and H(model) columns list the number of non-hydrogen atoms and hydrogen atoms in the chain respectively. The H(added) column lists the number of hydrogen atoms added and optimized by MolProbity. The Clashes column lists the number of clashes within the asymmetric unit, whereas Symm-Clashes lists symmetry-related clashes.

Mol	Chain	Non-H	H(model)	H(added)	Clashes	Symm-Clashes
1	A	2530	0	2600	24	0
1	B	2545	0	2614	36	0
2	A	33	0	7	3	0
2	B	33	0	7	6	0
3	A	44	0	27	3	0
3	B	44	0	27	8	0
4	A	1	0	0	0	0
4	B	1	0	0	0	0
5	A	103	0	0	0	0
5	B	75	0	0	3	0
All	All	5409	0	5282	66	0

The all-atom clashscore is defined as the number of clashes found per 1000 atoms (including hydrogen atoms). The all-atom clashscore for this structure is 6.

All (66) close contacts within the same asymmetric unit are listed below, sorted by their clash magnitude.

Atom-1	Atom-2	Interatomic distance (Å)	Clash overlap (Å)
1:B:306[B]:ILE:HD12	1:B:389:GLY:N	1.88	0.88
1:B:302:GLY:HA2	1:B:307[A]:CYS:SG	2.17	0.84
1:A:306[B]:ILE:HD13	1:A:387:TYR:CE2	2.13	0.84
1:B:307[A]:CYS:SG	2:B:501[A]:IMP:H2	2.18	0.83
1:A:47:VAL:HG12	1:A:69[B]:ILE:HG22	1.69	0.75
1:B:307[A]:CYS:SG	2:B:501[A]:IMP:C2	2.76	0.74
1:A:6:ILE:O	1:A:6:ILE:HG23	1.93	0.68
1:B:474:VAL:HG11	1:B:479:ILE:HD11	1.76	0.68
1:A:7:ALA:O	1:A:8:LYS:HB3	1.92	0.67
3:B:502:NAJ:H2A	5:B:629:HOH:O	1.95	0.66
1:B:306[B]:ILE:HD12	1:B:388:ARG:C	2.16	0.66
1:A:307[A]:CYS:SG	2:A:501[A]:IMP:H2	2.38	0.64
1:A:474:VAL:HG11	1:A:479:ILE:HD11	1.81	0.60
1:B:388:ARG:HB3	1:B:420[A]:GLU:HG3	1.83	0.60
1:A:302:GLY:HA2	1:A:307[A]:CYS:SG	2.41	0.60
3:B:502:NAJ:C2A	5:B:629:HOH:O	2.49	0.60
1:B:6:ILE:O	1:B:6:ILE:HG23	2.02	0.58

Continued on next page...

Continued from previous page...

Atom-1	Atom-2	Interatomic distance (Å)	Clash overlap (Å)
1:B:42:LEU:CD2	1:B:69:ILE:HG22	2.34	0.58
1:B:42:LEU:HD21	1:B:69:ILE:CG2	2.35	0.56
1:B:287:ARG:NH2	1:B:332[A]:GLU:OE1	2.40	0.54
2:B:501[A]:IMP:C2	3:B:502:NAJ:C4N	2.86	0.54
1:B:252:SER:OG	3:B:502:NAJ:H2A	2.07	0.53
1:B:426:LYS:HE2	5:B:624:HOH:O	2.07	0.53
1:A:6:ILE:O	1:A:6:ILE:CG2	2.57	0.53
1:B:306[B]:ILE:HD13	1:B:387:TYR:CE2	2.44	0.53
1:A:306[B]:ILE:HB	1:A:419:ILE:HD12	1.90	0.53
1:B:8:LYS:HG2	1:B:9:GLU:O	2.10	0.52
1:B:42:LEU:HD21	1:B:69:ILE:HG22	1.93	0.51
1:A:307[A]:CYS:SG	2:A:501[A]:IMP:C2	2.99	0.49
3:A:502:NAJ:H51N	3:A:502:NAJ:H6N	1.94	0.49
1:A:252:SER:HB3	3:A:502:NAJ:O1N	2.13	0.49
1:B:454:ASP:OD1	1:B:458:LYS:NZ	2.46	0.49
1:A:382:ARG:HG2	1:B:382:ARG:HG2	1.94	0.48
1:B:302:GLY:N	1:B:303:PRO:CD	2.76	0.48
1:B:42:LEU:HD22	1:B:69:ILE:HG22	1.97	0.47
1:B:252:SER:HG	3:B:502:NAJ:PN	2.38	0.46
1:A:257:GLU:OE2	1:A:264:ARG:NH1	2.48	0.46
1:B:249:ILE:HD12	1:B:275:ILE:HG23	1.98	0.46
1:B:488:LEU:C	1:B:488:LEU:HD13	2.36	0.46
1:A:302:GLY:N	1:A:303:PRO:CD	2.80	0.45
1:A:8:LYS:HG3	1:A:9:GLU:O	2.17	0.44
1:A:290:ILE:HG21	1:A:333:TYR:CG	2.53	0.44
2:B:501[A]:IMP:H2	3:B:502:NAJ:C4N	2.47	0.44
1:A:302:GLY:HA3	1:A:310:ARG:HG3	1.99	0.44
1:B:52:ASP:HA	1:B:73:HIS:CD2	2.52	0.44
1:B:232:ASN:O	1:B:236:VAL:HG23	2.18	0.44
2:A:501[A]:IMP:N3	3:A:502:NAJ:C2N	2.82	0.43
1:B:85:VAL:O	1:B:89:LYS:HG2	2.19	0.43
1:B:419:ILE:C	1:B:419:ILE:HD12	2.39	0.43
1:B:252:SER:N	3:B:502:NAJ:O1N	2.53	0.42
1:A:276:ILE:HG12	1:A:296:ALA:HB3	2.00	0.42
1:B:466:GLY:O	1:B:470:LYS:HD3	2.19	0.42
1:B:349:ILE:HG23	1:B:360:VAL:HG11	2.02	0.42
1:A:47:VAL:CG1	1:A:69[B]:ILE:HG22	2.45	0.42
1:B:36:LEU:HG	1:B:37:THR:HG23	2.02	0.41
1:B:426:LYS:HB3	1:B:432:ILE:HD11	2.02	0.41
1:A:475:HIS:ND1	1:A:476:ASP:OD2	2.53	0.41
1:B:11:LEU:HD22	1:B:15:ASP:HB3	2.03	0.41

Continued on next page...

Continued from previous page...

Atom-1	Atom-2	Interatomic distance (Å)	Clash overlap (Å)
1:B:307[A]:CYS:HG	2:B:501[A]:IMP:H2	1.85	0.41
1:A:424:ALA:O	1:A:426:LYS:HG3	2.20	0.40
1:B:26:LEU:HB2	1:B:29:THR:HG23	2.02	0.40
1:A:7:ALA:O	1:A:8:LYS:CB	2.63	0.40
2:B:501[A]:IMP:C2	3:B:502:NAJ:C3N	2.99	0.40
1:A:281:ALA:HB1	1:A:317:VAL:HB	2.04	0.40
1:B:301:ILE:C	1:B:303:PRO:HD3	2.41	0.40

There are no symmetry-related clashes.

5.3 Torsion angles [i](#)

5.3.1 Protein backbone [i](#)

In the following table, the Percentiles column shows the percent Ramachandran outliers of the chain as a percentile score with respect to all X-ray entries followed by that with respect to entries of similar resolution.

The Analysed column shows the number of residues for which the backbone conformation was analysed, and the total number of residues.

Mol	Chain	Analysed	Favoured	Allowed	Outliers	Percentiles	
1	A	345/366 (94%)	335 (97%)	9 (3%)	1 (0%)	41	50
1	B	347/366 (95%)	335 (96%)	12 (4%)	0	100	100
All	All	692/732 (94%)	670 (97%)	21 (3%)	1 (0%)	51	63

All (1) Ramachandran outliers are listed below:

Mol	Chain	Res	Type
1	A	8	LYS

5.3.2 Protein sidechains [i](#)

In the following table, the Percentiles column shows the percent sidechain outliers of the chain as a percentile score with respect to all X-ray entries followed by that with respect to entries of similar resolution.

The Analysed column shows the number of residues for which the sidechain conformation was analysed, and the total number of residues.

Mol	Chain	Analysed	Rotameric	Outliers	Percentiles	
1	A	262/274 (96%)	254 (97%)	8 (3%)	40	55
1	B	264/274 (96%)	247 (94%)	17 (6%)	17	23
All	All	526/548 (96%)	501 (95%)	25 (5%)	30	35

All (25) residues with a non-rotameric sidechain are listed below:

Mol	Chain	Res	Type
1	A	26	LEU
1	A	262	ARG
1	A	306[A]	ILE
1	A	306[B]	ILE
1	A	393	LEU
1	A	414	LEU
1	A	482	GLU
1	A	487	ARG
1	B	8	LYS
1	B	69	ILE
1	B	234[A]	GLU
1	B	234[B]	GLU
1	B	262	ARG
1	B	291	GLU
1	B	295	SER
1	B	306[A]	ILE
1	B	306[B]	ILE
1	B	393	LEU
1	B	414	LEU
1	B	431[A]	GLU
1	B	431[B]	GLU
1	B	458	LYS
1	B	460	GLN
1	B	462	VAL
1	B	470	LYS

Sometimes sidechains can be flipped to improve hydrogen bonding and reduce clashes. All (3) such sidechains are listed below:

Mol	Chain	Res	Type
1	B	80	GLN
1	B	84	GLN
1	B	436	GLN

5.3.3 RNA [i](#)

There are no RNA molecules in this entry.

5.4 Non-standard residues in protein, DNA, RNA chains [i](#)

There are no non-standard protein/DNA/RNA residues in this entry.

5.5 Carbohydrates [i](#)

There are no monosaccharides in this entry.

5.6 Ligand geometry [i](#)

Of 8 ligands modelled in this entry, 2 are monoatomic - leaving 6 for Mogul analysis.

In the following table, the Counts columns list the number of bonds (or angles) for which Mogul statistics could be retrieved, the number of bonds (or angles) that are observed in the model and the number of bonds (or angles) that are defined in the Chemical Component Dictionary. The Link column lists molecule types, if any, to which the group is linked. The Z score for a bond length (or angle) is the number of standard deviations the observed value is removed from the expected value. A bond length (or angle) with $|Z| > 2$ is considered an outlier worth inspection. RMSZ is the root-mean-square of all Z scores of the bond lengths (or angles).

Mol	Type	Chain	Res	Link	Bond lengths			Bond angles		
					Counts	RMSZ	# Z > 2	Counts	RMSZ	# Z > 2
2	IMP	A	501[B]	-	21,25,25	1.67	4 (19%)	24,38,38	1.35	4 (16%)
3	NAJ	A	502	-	42,48,48	0.93	3 (7%)	50,73,73	1.53	7 (14%)
2	IMP	B	501[B]	-	21,25,25	2.12	5 (23%)	24,38,38	1.40	5 (20%)
2	IMP	B	501[A]	-	21,25,25	2.19	6 (28%)	24,38,38	1.36	4 (16%)
3	NAJ	B	502	-	42,48,48	0.91	2 (4%)	50,73,73	1.18	4 (8%)
2	IMP	A	501[A]	-	21,25,25	1.74	4 (19%)	24,38,38	1.33	4 (16%)

In the following table, the Chirals column lists the number of chiral outliers, the number of chiral centers analysed, the number of these observed in the model and the number defined in the Chemical Component Dictionary. Similar counts are reported in the Torsion and Rings columns. '-' means no outliers of that kind were identified.

Mol	Type	Chain	Res	Link	Chirals	Torsions	Rings
2	IMP	A	501[B]	-	-	0/6/26/26	0/3/3/3
3	NAJ	A	502	-	-	9/26/62/62	0/5/5/5
2	IMP	B	501[B]	-	-	0/6/26/26	0/3/3/3

Continued on next page...

Continued from previous page...

Mol	Type	Chain	Res	Link	Chirals	Torsions	Rings
2	IMP	B	501[A]	-	-	0/6/26/26	0/3/3/3
3	NAJ	B	502	-	-	8/26/62/62	0/5/5/5
2	IMP	A	501[A]	-	-	0/6/26/26	0/3/3/3

All (24) bond length outliers are listed below:

Mol	Chain	Res	Type	Atoms	Z	Observed(Å)	Ideal(Å)
2	B	501[A]	IMP	O4'-C1'	5.84	1.49	1.41
2	B	501[B]	IMP	O4'-C1'	5.84	1.49	1.41
2	B	501[A]	IMP	C5-C6	-4.60	1.38	1.47
2	A	501[A]	IMP	C5-C6	-4.44	1.38	1.47
2	B	501[B]	IMP	C5-C6	-4.37	1.38	1.47
2	A	501[B]	IMP	C5-C6	-4.33	1.38	1.47
2	A	501[A]	IMP	O4'-C1'	3.47	1.45	1.41
2	A	501[B]	IMP	O4'-C1'	3.47	1.45	1.41
2	A	501[A]	IMP	C2-N3	3.13	1.35	1.29
2	B	501[A]	IMP	C2-N3	3.10	1.35	1.29
2	B	501[A]	IMP	C2'-C1'	-3.09	1.49	1.53
2	B	501[B]	IMP	C2'-C1'	-3.09	1.49	1.53
2	B	501[B]	IMP	C2-N3	2.93	1.35	1.29
3	A	502	NAJ	O4B-C1B	2.93	1.45	1.41
2	A	501[B]	IMP	C2-N3	2.83	1.35	1.29
2	A	501[A]	IMP	C6-N1	-2.80	1.33	1.38
3	B	502	NAJ	O4D-C1D	2.79	1.45	1.41
2	B	501[A]	IMP	C6-N1	-2.62	1.33	1.38
3	A	502	NAJ	C2A-N3A	2.49	1.36	1.32
3	B	502	NAJ	O4B-C1B	2.34	1.44	1.41
3	A	502	NAJ	O4D-C1D	2.32	1.44	1.41
2	A	501[B]	IMP	C6-N1	-2.31	1.33	1.38
2	B	501[B]	IMP	C6-N1	-2.16	1.34	1.38
2	B	501[A]	IMP	C5-C4	-2.02	1.37	1.43

All (28) bond angle outliers are listed below:

Mol	Chain	Res	Type	Atoms	Z	Observed(°)	Ideal(°)
3	A	502	NAJ	N3A-C2A-N1A	-4.76	121.23	128.68
3	B	502	NAJ	N3A-C2A-N1A	-3.62	123.02	128.68
3	A	502	NAJ	PN-O3-PA	-3.51	120.78	132.83
3	A	502	NAJ	C2D-C3D-C4D	3.26	108.98	102.64
2	B	501[B]	IMP	C5-C6-N1	3.07	119.38	113.95
2	B	501[A]	IMP	C5-C6-N1	3.07	119.38	113.95
2	A	501[B]	IMP	C5-C6-N1	2.78	118.86	113.95

Continued on next page...

Continued from previous page...

Mol	Chain	Res	Type	Atoms	Z	Observed(°)	Ideal(°)
2	B	501[B]	IMP	C8-N7-C5	2.74	108.20	102.99
2	A	501[B]	IMP	C8-N7-C5	2.71	108.16	102.99
2	A	501[A]	IMP	C8-N7-C5	2.71	108.15	102.99
2	B	501[A]	IMP	C8-N7-C5	2.65	108.03	102.99
2	A	501[A]	IMP	C5-C6-N1	2.62	118.58	113.95
2	B	501[A]	IMP	O2'-C2'-C1'	-2.46	101.77	110.85
2	B	501[B]	IMP	O2'-C2'-C1'	-2.46	101.77	110.85
3	A	502	NAJ	O5D-C5D-C4D	2.38	117.19	108.99
3	A	502	NAJ	C6N-N1N-C2N	-2.24	119.93	121.97
2	A	501[A]	IMP	O4'-C1'-C2'	2.20	110.14	106.93
2	A	501[B]	IMP	O4'-C1'-C2'	2.20	110.14	106.93
3	A	502	NAJ	C3B-C2B-C1B	2.18	104.26	100.98
3	B	502	NAJ	PN-O3-PA	-2.17	125.38	132.83
2	B	501[B]	IMP	N1-C2-N3	-2.16	120.23	125.87
2	B	501[A]	IMP	C3'-C2'-C1'	2.14	104.20	100.98
2	B	501[B]	IMP	C3'-C2'-C1'	2.14	104.20	100.98
3	A	502	NAJ	C2B-C3B-C4B	-2.11	98.54	102.64
3	B	502	NAJ	C2D-C3D-C4D	2.10	106.73	102.64
3	B	502	NAJ	O4B-C4B-C5B	2.05	116.11	109.37
2	A	501[A]	IMP	O6-C6-N1	-2.04	117.84	120.32
2	A	501[B]	IMP	N1-C2-N3	-2.02	120.61	125.87

There are no chirality outliers.

All (17) torsion outliers are listed below:

Mol	Chain	Res	Type	Atoms
3	A	502	NAJ	C5B-O5B-PA-O2A
3	A	502	NAJ	C5D-O5D-PN-O3
3	A	502	NAJ	C5D-O5D-PN-O2N
3	B	502	NAJ	C5D-O5D-PN-O3
3	B	502	NAJ	C5D-O5D-PN-O1N
3	A	502	NAJ	O4D-C4D-C5D-O5D
3	B	502	NAJ	O4D-C4D-C5D-O5D
3	B	502	NAJ	C3D-C4D-C5D-O5D
3	A	502	NAJ	C3D-C4D-C5D-O5D
3	B	502	NAJ	PA-O3-PN-O5D
3	B	502	NAJ	O4B-C4B-C5B-O5B
3	B	502	NAJ	C4D-C5D-O5D-PN
3	A	502	NAJ	C4D-C5D-O5D-PN
3	A	502	NAJ	PN-O3-PA-O1A
3	A	502	NAJ	C5B-O5B-PA-O3
3	B	502	NAJ	PA-O3-PN-O1N

Continued on next page...

Continued from previous page...

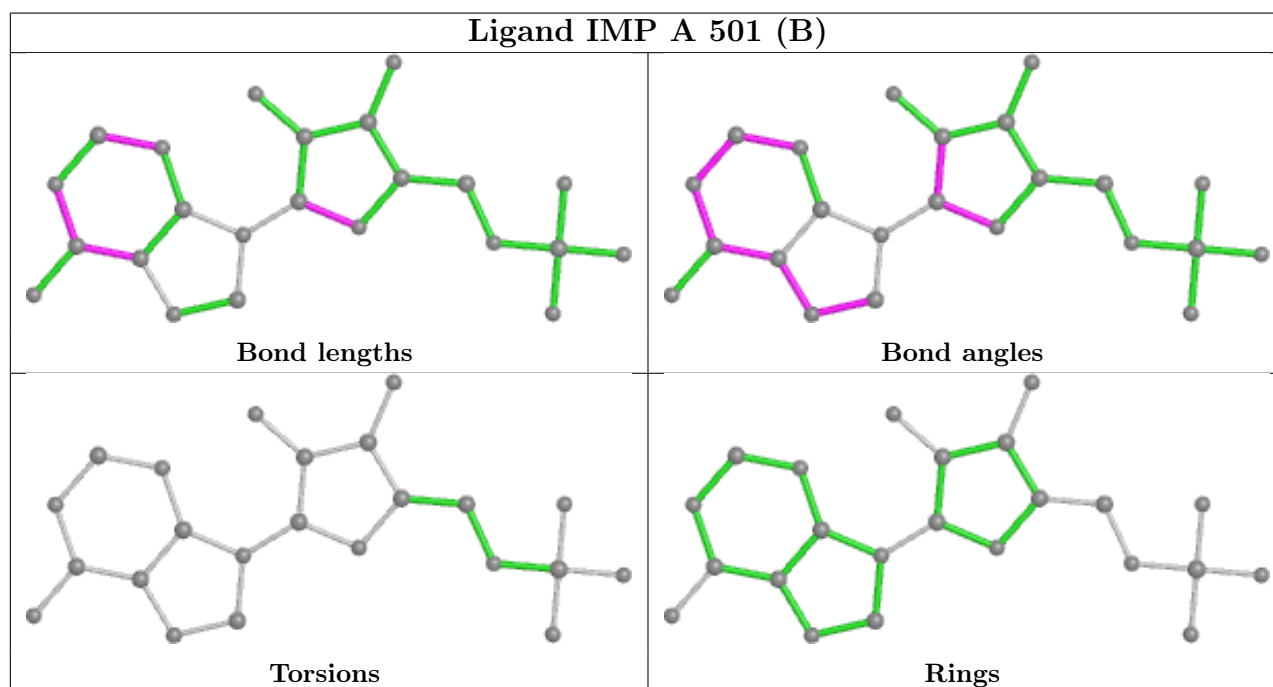
Mol	Chain	Res	Type	Atoms
3	A	502	NAJ	C5B-O5B-PA-O1A

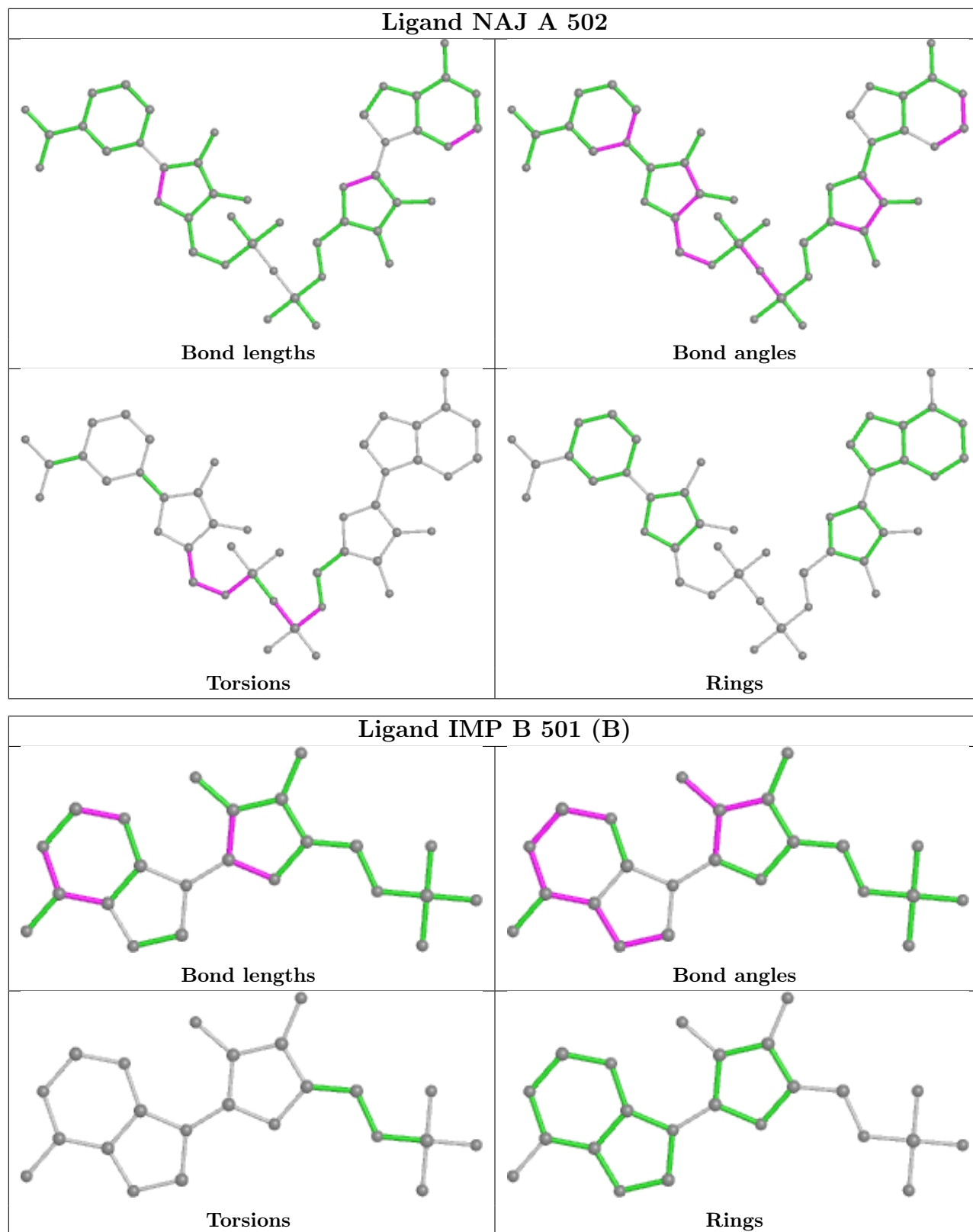
There are no ring outliers.

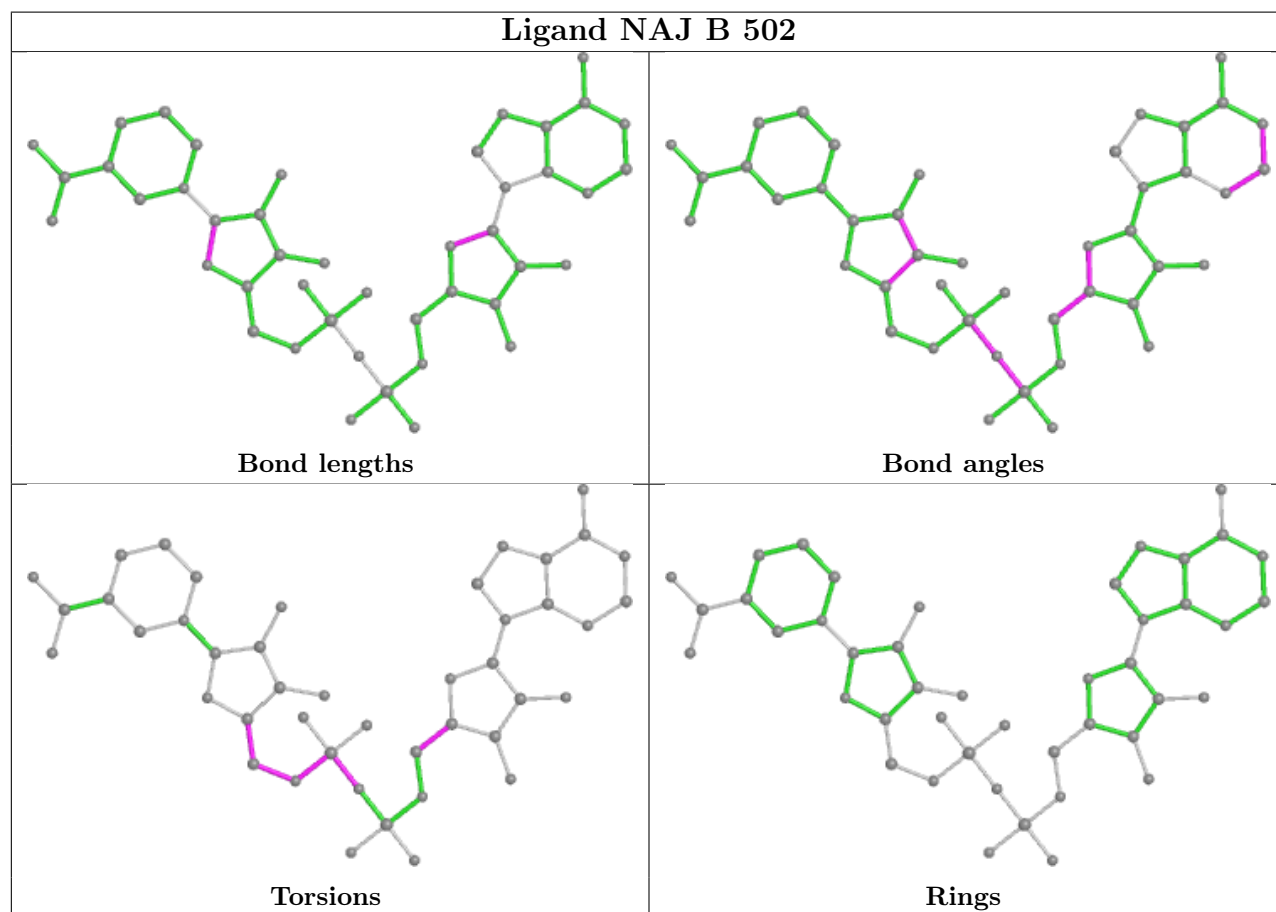
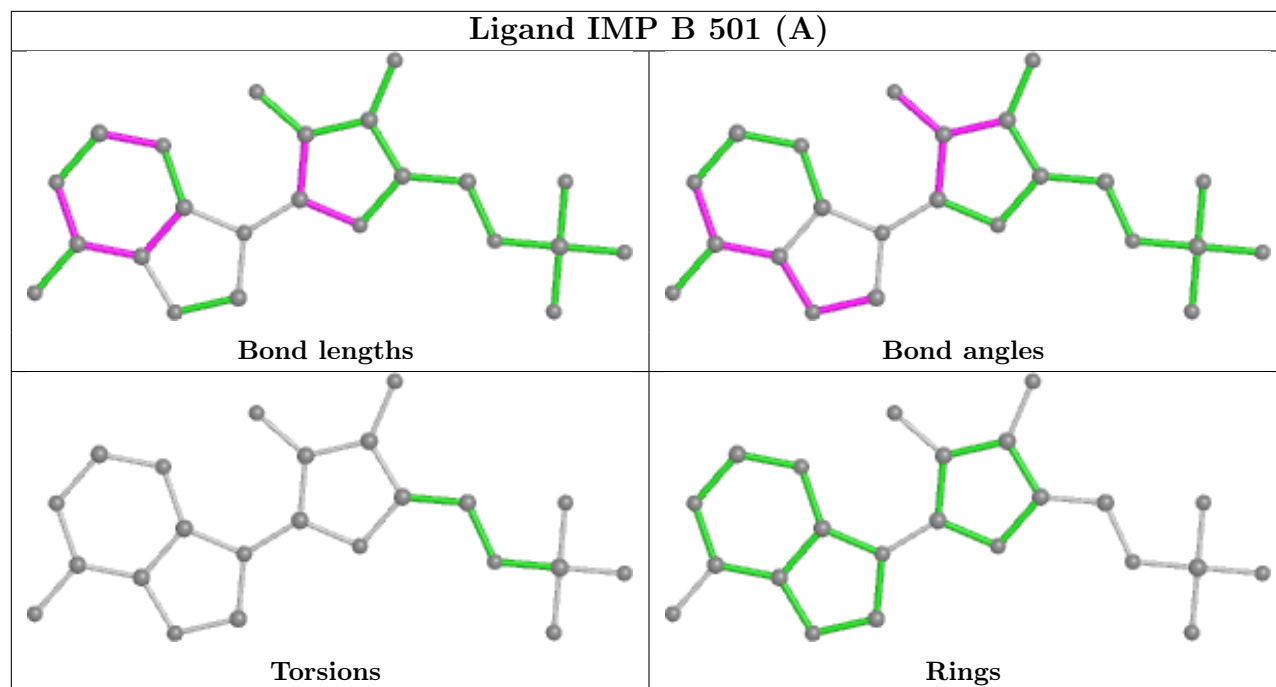
4 monomers are involved in 16 short contacts:

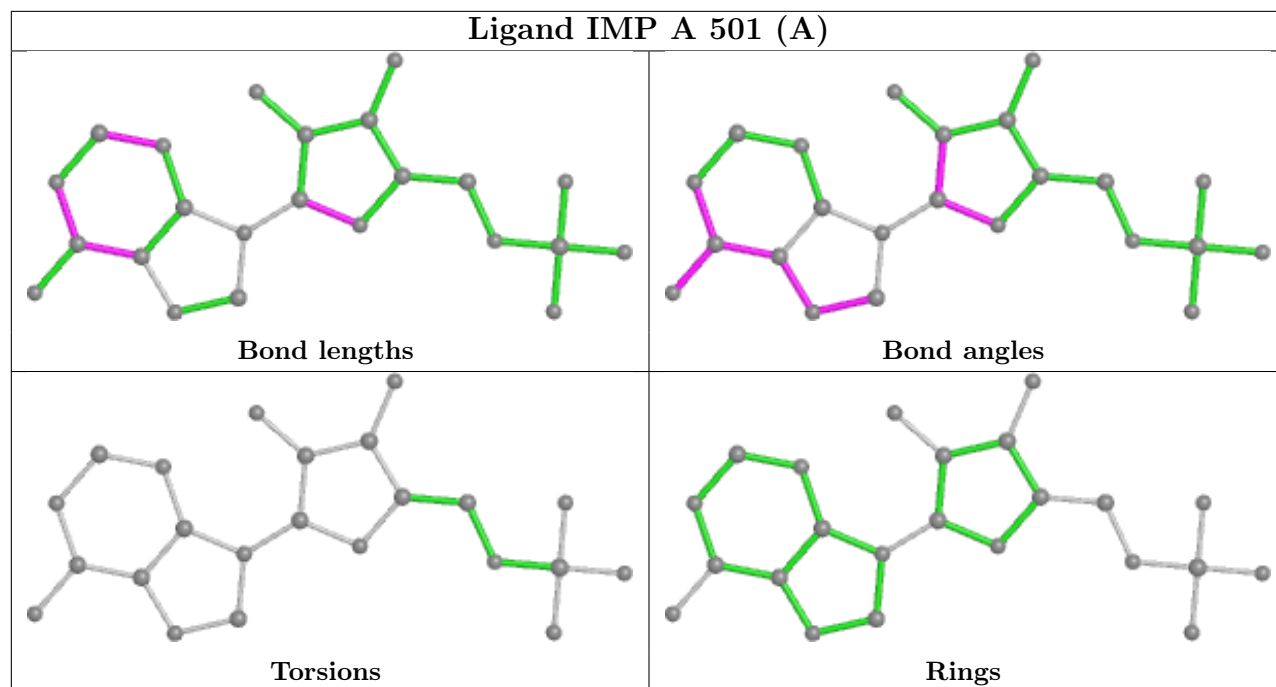
Mol	Chain	Res	Type	Clashes	Symm-Clashes
3	A	502	NAJ	3	0
2	B	501[A]	IMP	6	0
3	B	502	NAJ	8	0
2	A	501[A]	IMP	3	0

The following is a two-dimensional graphical depiction of Mogul quality analysis of bond lengths, bond angles, torsion angles, and ring geometry for all instances of the Ligand of Interest. In addition, ligands with molecular weight > 250 and outliers as shown on the validation Tables will also be included. For torsion angles, if less than 5% of the Mogul distribution of torsion angles is within 10 degrees of the torsion angle in question, then that torsion angle is considered an outlier. Any bond that is central to one or more torsion angles identified as an outlier by Mogul will be highlighted in the graph. For rings, the root-mean-square deviation (RMSD) between the ring in question and similar rings identified by Mogul is calculated over all ring torsion angles. If the average RMSD is greater than 60 degrees and the minimal RMSD between the ring in question and any Mogul-identified rings is also greater than 60 degrees, then that ring is considered an outlier. The outliers are highlighted in purple. The color gray indicates Mogul did not find sufficient equivalents in the CSD to analyse the geometry.









5.7 Other polymers [i](#)

There are no such residues in this entry.

5.8 Polymer linkage issues [i](#)

There are no chain breaks in this entry.

6 Fit of model and data [i](#)

6.1 Protein, DNA and RNA chains [i](#)

In the following table, the column labelled ‘#RSRZ > 2’ contains the number (and percentage) of RSRZ outliers, followed by percent RSRZ outliers for the chain as percentile scores relative to all X-ray entries and entries of similar resolution. The OWAB column contains the minimum, median, 95th percentile and maximum values of the occupancy-weighted average B-factor per residue. The column labelled ‘Q < 0.9’ lists the number of (and percentage) of residues with an average occupancy less than 0.9.

Mol	Chain	Analysed	<RSRZ>	#RSRZ>2	OWAB(Å ²)	Q<0.9
1	A	342/366 (93%)	-0.09	6 (1%) 68 75	26, 38, 59, 79	1 (0%)
1	B	342/366 (93%)	0.07	7 (2%) 65 72	30, 44, 68, 85	1 (0%)
All	All	684/732 (93%)	-0.01	13 (1%) 66 73	26, 41, 65, 85	2 (0%)

All (13) RSRZ outliers are listed below:

Mol	Chain	Res	Type	RSRZ
1	B	7	ALA	5.8
1	A	79[A]	GLU	3.7
1	B	327	ALA	3.4
1	B	234[A]	GLU	2.6
1	A	414	LEU	2.4
1	B	434[A]	HIS	2.3
1	A	396	MET	2.2
1	B	273	LEU	2.2
1	A	228	ALA	2.2
1	B	306[A]	ILE	2.1
1	A	395	ALA	2.1
1	B	24	THR	2.0
1	A	234	GLU	2.0

6.2 Non-standard residues in protein, DNA, RNA chains [i](#)

There are no non-standard protein/DNA/RNA residues in this entry.

6.3 Carbohydrates [i](#)

There are no monosaccharides in this entry.

6.4 Ligands

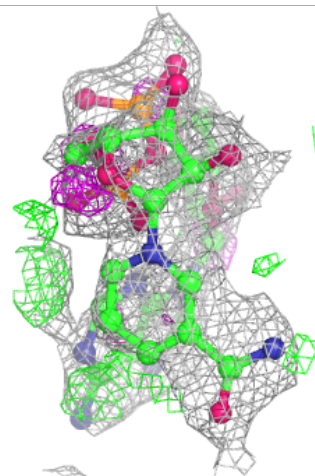
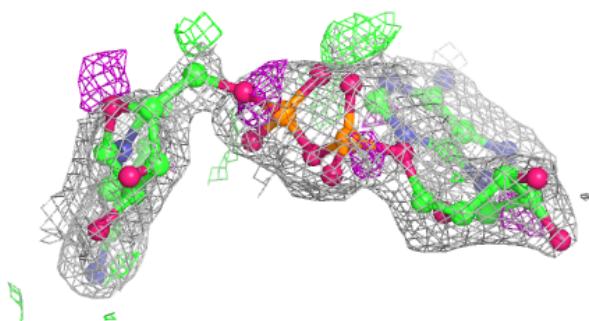
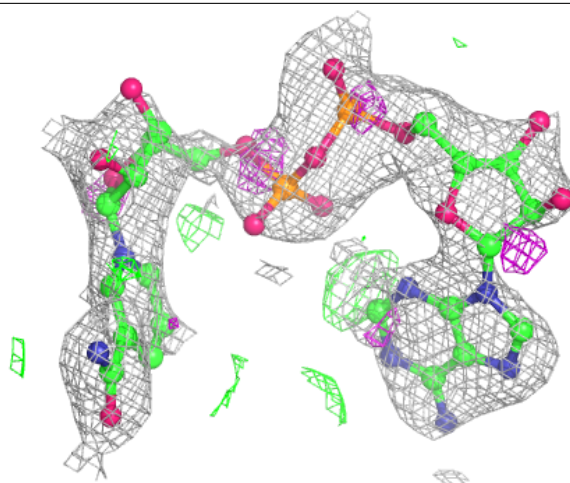
In the following table, the Atoms column lists the number of modelled atoms in the group and the number defined in the chemical component dictionary. The B-factors column lists the minimum, median, 95th percentile and maximum values of B factors of atoms in the group. The column labelled 'Q<0.9' lists the number of atoms with occupancy less than 0.9.

Mol	Type	Chain	Res	Atoms	RSCC	RSR	B-factors(Å ²)	Q<0.9
3	NAJ	A	502	44/44	0.83	0.26	51,72,83,96	0
3	NAJ	B	502	44/44	0.84	0.23	48,73,94,104	0
2	IMP	B	501[A]	23/23	0.96	0.12	29,36,47,48	10
2	IMP	B	501[B]	23/23	0.96	0.12	29,36,44,45	10
2	IMP	A	501[A]	23/23	0.97	0.13	26,33,45,49	10
2	IMP	A	501[B]	23/23	0.97	0.13	26,33,42,44	10
4	K	A	503	1/1	0.99	0.09	31,31,31,31	0
4	K	B	503	1/1	0.99	0.12	34,34,34,34	0

The following is a graphical depiction of the model fit to experimental electron density of all instances of the Ligand of Interest. In addition, ligands with molecular weight > 250 and outliers as shown on the geometry validation Tables will also be included. Each fit is shown from different orientation to approximate a three-dimensional view.

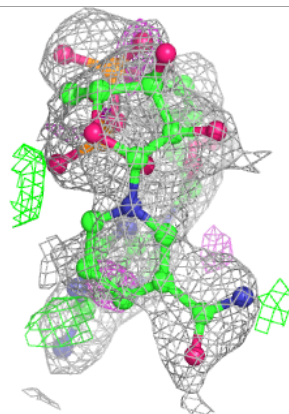
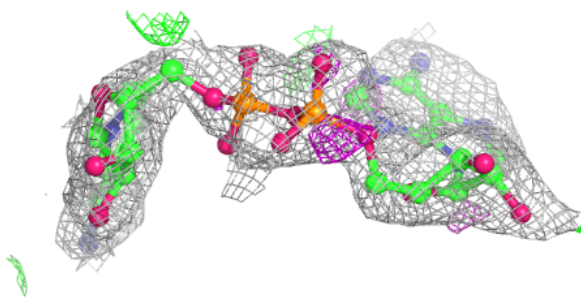
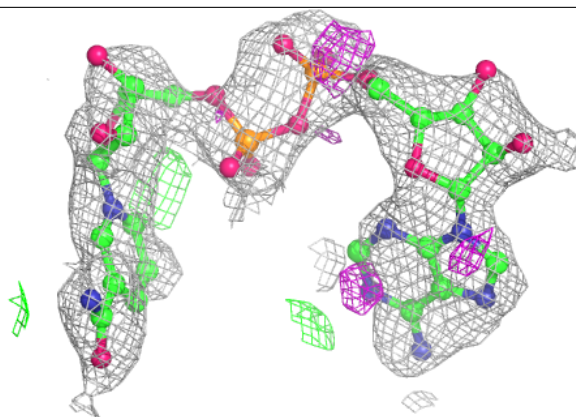
Electron density around NAJ A 502:

$2mF_o-DF_c$ (at 0.7 rmsd) in gray
 mF_o-DF_c (at 3 rmsd) in purple (negative)
and green (positive)

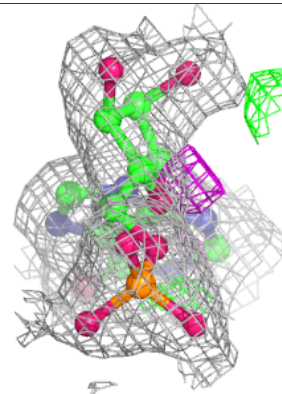
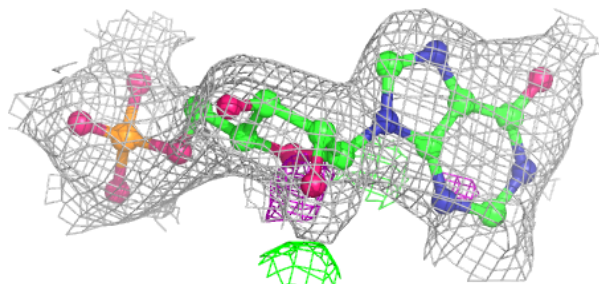
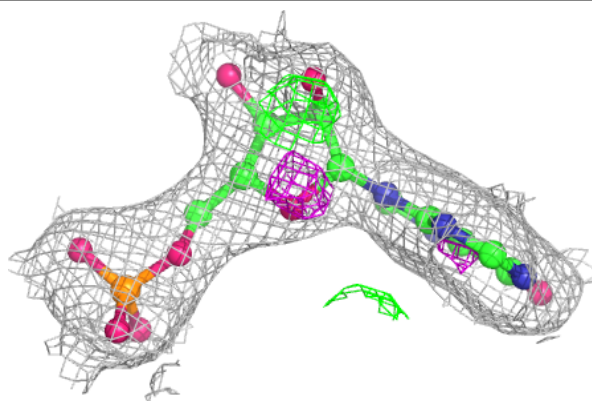


Electron density around NAJ B 502:

$2mF_o-DF_c$ (at 0.7 rmsd) in gray
 mF_o-DF_c (at 3 rmsd) in purple (negative)
and green (positive)

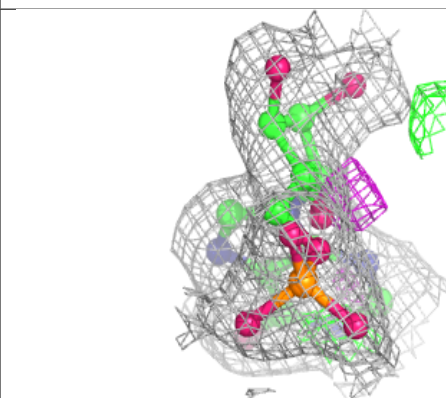
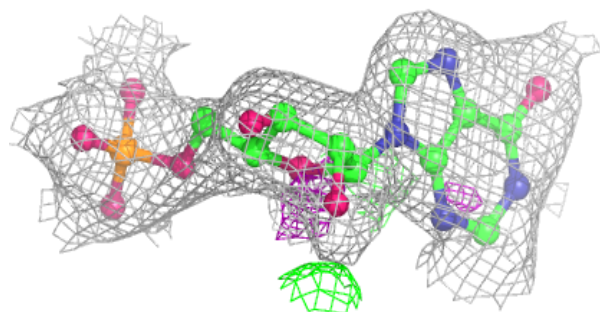
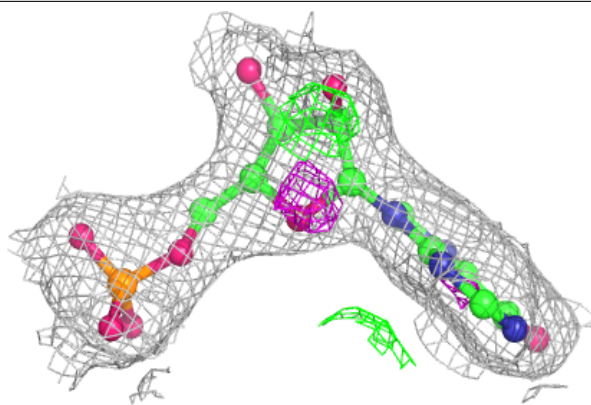
**Electron density around IMP B 501 (A):**

$2mF_o-DF_c$ (at 0.7 rmsd) in gray
 mF_o-DF_c (at 3 rmsd) in purple (negative)
and green (positive)

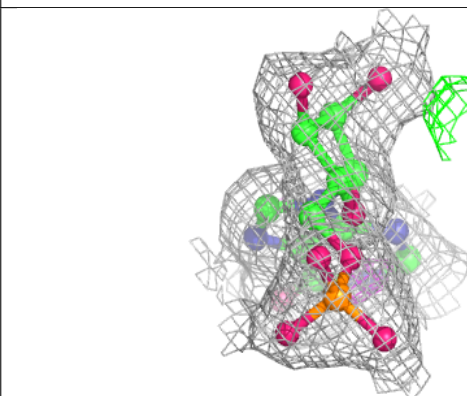
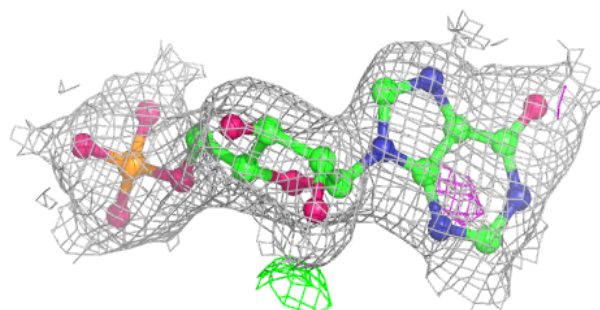
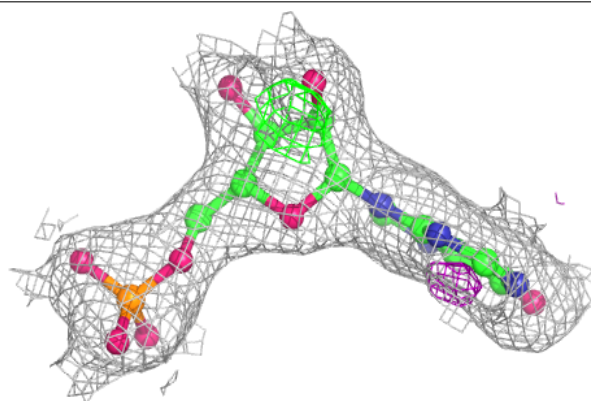


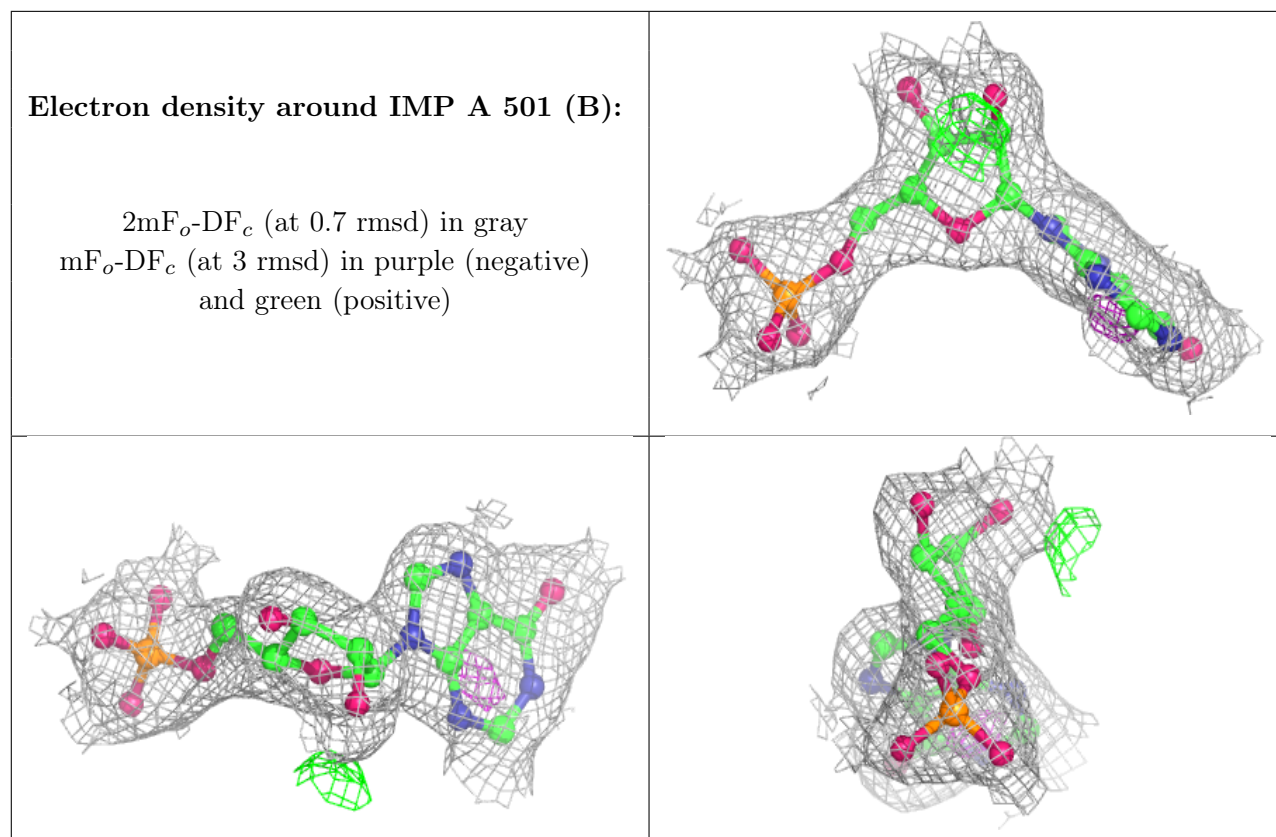
Electron density around IMP B 501 (B):

$2mF_o-DF_c$ (at 0.7 rmsd) in gray
 mF_o-DF_c (at 3 rmsd) in purple (negative)
and green (positive)

**Electron density around IMP A 501 (A):**

$2mF_o-DF_c$ (at 0.7 rmsd) in gray
 mF_o-DF_c (at 3 rmsd) in purple (negative)
and green (positive)





6.5 Other polymers [i](#)

There are no such residues in this entry.