



Full wwPDB X-ray Structure Validation Report ⓘ

Sep 17, 2023 – 06:42 AM EDT

PDB ID : 4PFN
Title : Crystal structure of Plasmodium vivax SHMT with L-serine Schiff base
Authors : Chitnumsub, P.; Jaruwat, A.; Leartsakulpanich, U.
Deposited on : 2014-04-30
Resolution : 2.50 Å(reported)

This is a Full wwPDB X-ray Structure Validation Report for a publicly released PDB entry.

We welcome your comments at validation@mail.wwpdb.org

A user guide is available at

<https://www.wwpdb.org/validation/2017/XrayValidationReportHelp>

with specific help available everywhere you see the ⓘ symbol.

The types of validation reports are described at

<http://www.wwpdb.org/validation/2017/FAQs#types>.

The following versions of software and data (see [references ⓘ](#)) were used in the production of this report:

MolProbity : 4.02b-467
Mogul : 1.8.5 (274361), CSD as541be (2020)
Xtrriage (Phenix) : 1.13
EDS : 2.35.1
Percentile statistics : 20191225.v01 (using entries in the PDB archive December 25th 2019)
Refmac : 5.8.0158
CCP4 : 7.0.044 (Gargrove)
Ideal geometry (proteins) : Engh & Huber (2001)
Ideal geometry (DNA, RNA) : Parkinson et al. (1996)
Validation Pipeline (wwPDB-VP) : 2.35.1

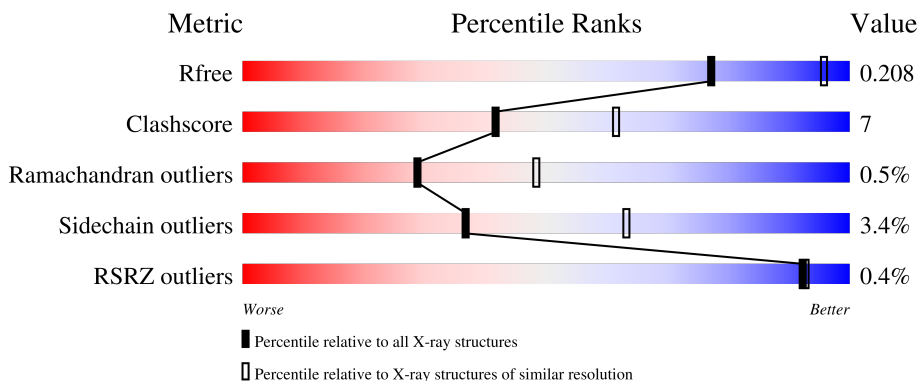
1 Overall quality at a glance

The following experimental techniques were used to determine the structure:

X-RAY DIFFRACTION

The reported resolution of this entry is 2.50 Å.

Percentile scores (ranging between 0-100) for global validation metrics of the entry are shown in the following graphic. The table shows the number of entries on which the scores are based.



Metric	Whole archive (#Entries)	Similar resolution (#Entries, resolution range(Å))
R_{free}	130704	4661 (2.50-2.50)
Clashscore	141614	5346 (2.50-2.50)
Ramachandran outliers	138981	5231 (2.50-2.50)
Sidechain outliers	138945	5233 (2.50-2.50)
RSRZ outliers	127900	4559 (2.50-2.50)

The table below summarises the geometric issues observed across the polymeric chains and their fit to the electron density. The red, orange, yellow and green segments of the lower bar indicate the fraction of residues that contain outliers for ≥ 3 , 2, 1 and 0 types of geometric quality criteria respectively. A grey segment represents the fraction of residues that are not modelled. The numeric value for each fraction is indicated below the corresponding segment, with a dot representing fractions $\leq 5\%$. The upper red bar (where present) indicates the fraction of residues that have poor fit to the electron density. The numeric value is given above the bar.

Mol	Chain	Length	Quality of chain
1	A	442	 80% 19% .
1	B	442	 83% 17%
1	C	442	 80% 19% .

2 Entry composition [i](#)

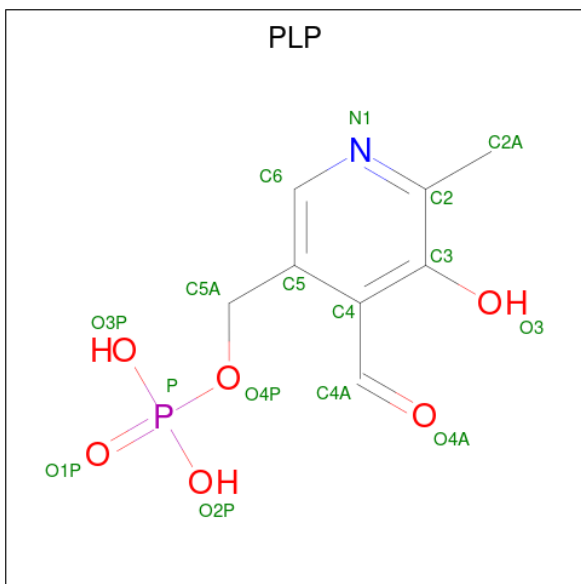
There are 5 unique types of molecules in this entry. The entry contains 10823 atoms, of which 0 are hydrogens and 0 are deuteriums.

In the tables below, the ZeroOcc column contains the number of atoms modelled with zero occupancy, the AltConf column contains the number of residues with at least one atom in alternate conformation and the Trace column contains the number of residues modelled with at most 2 atoms.

- Molecule 1 is a protein called Serine hydroxymethyltransferase, putative.

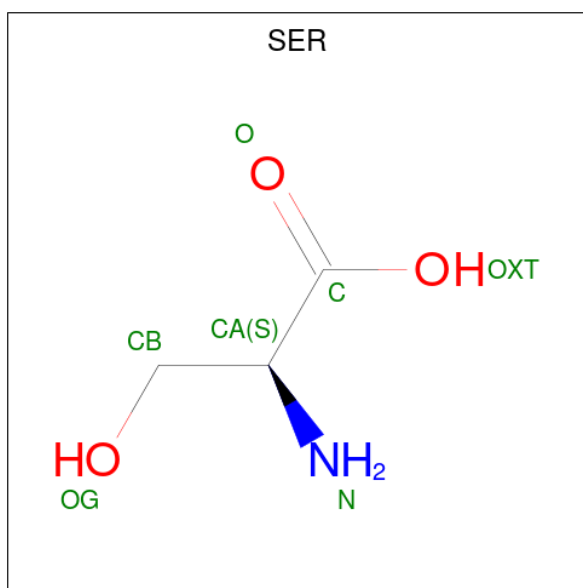
Mol	Chain	Residues	Atoms					ZeroOcc	AltConf	Trace
			Total	C	N	O	S			
1	A	442	Total	C	N	O	S	0	0	0
			3458	2186	600	655	17			
1	B	442	Total	C	N	O	S	0	0	0
			3458	2186	600	655	17			
1	C	442	Total	C	N	O	S	0	0	0
			3458	2186	600	655	17			

- Molecule 2 is PYRIDOXAL-5'-PHOSPHATE (three-letter code: PLP) (formula: C₈H₁₀NO₆P).



Mol	Chain	Residues	Atoms					ZeroOcc	AltConf
			Total	C	N	O	P		
2	A	1	Total	C	N	O	P	0	0
			15	8	1	5	1		
2	B	1	Total	C	N	O	P	0	0
			15	8	1	5	1		
2	C	1	Total	C	N	O	P	0	0
			15	8	1	5	1		

- Molecule 3 is SERINE (three-letter code: SER) (formula: $C_3H_7NO_3$).



Mol	Chain	Residues	Atoms				ZeroOcc	AltConf
			Total	C	N	O		
3	A	1	7	3	1	3	0	0
3	B	1	7	3	1	3	0	0
3	C	1	7	3	1	3	0	0

- Molecule 4 is CHLORIDE ION (three-letter code: CL) (formula: Cl).

Mol	Chain	Residues	Atoms		ZeroOcc	AltConf
			Total	Cl		
4	B	1	1	1	0	0
4	C	1	1	1	0	0

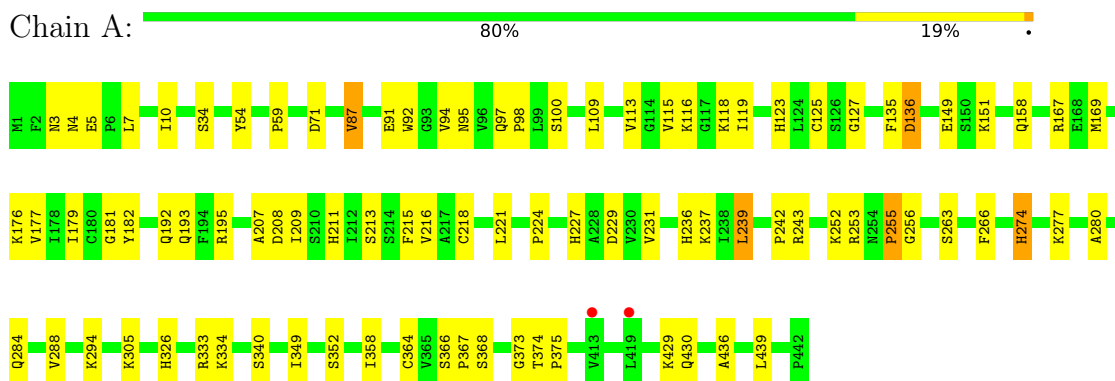
- Molecule 5 is water.

Mol	Chain	Residues	Atoms		ZeroOcc	AltConf
			Total	O		
5	A	122	122	122	0	0
5	B	141	141	141	0	0
5	C	118	118	118	0	0

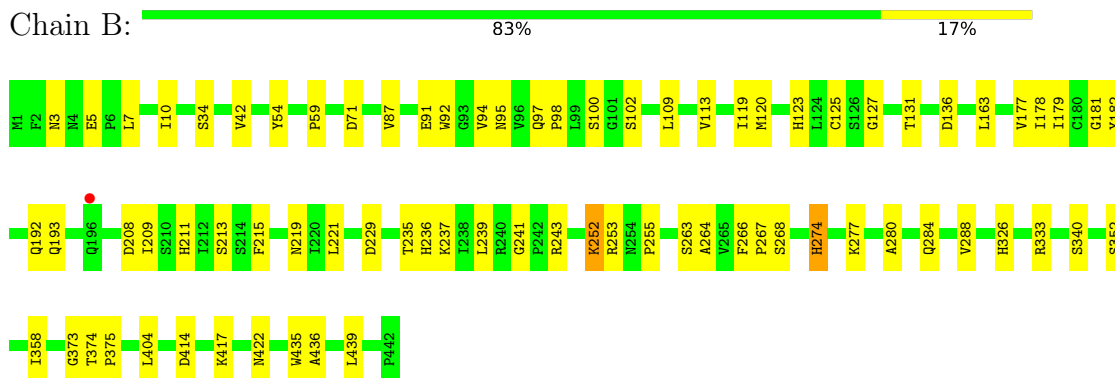
3 Residue-property plots

These plots are drawn for all protein, RNA, DNA and oligosaccharide chains in the entry. The first graphic for a chain summarises the proportions of the various outlier classes displayed in the second graphic. The second graphic shows the sequence view annotated by issues in geometry and electron density. Residues are color-coded according to the number of geometric quality criteria for which they contain at least one outlier: green = 0, yellow = 1, orange = 2 and red = 3 or more. A red dot above a residue indicates a poor fit to the electron density ($RSRZ > 2$). Stretches of 2 or more consecutive residues without any outlier are shown as a green connector. Residues present in the sample, but not in the model, are shown in grey.

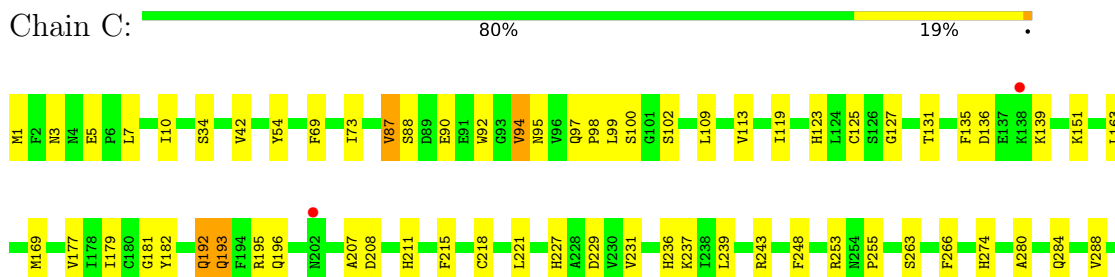
- Molecule 1: Serine hydroxymethyltransferase, putative



- Molecule 1: Serine hydroxymethyltransferase, putative



- Molecule 1: Serine hydroxymethyltransferase, putative





4 Data and refinement statistics i

Property	Value	Source
Space group	C 1 2 1	Depositor
Cell constants a, b, c, α , β , γ	100.40Å 57.94Å 235.92Å 90.00° 90.01° 90.00°	Depositor
Resolution (Å)	30.00 – 2.50 29.49 – 2.50	Depositor EDS
% Data completeness (in resolution range)	93.9 (30.00-2.50) 94.0 (29.49-2.50)	Depositor EDS
R_{merge}	0.03	Depositor
R_{sym}	(Not available)	Depositor
$\langle I/\sigma(I) \rangle$ ¹	8.83 (at 2.51Å)	Xtriage
Refinement program	REFMAC 5.6.0117	Depositor
R, R_{free}	0.207 , 0.263 0.207 , 0.208	Depositor DCC
R_{free} test set	4498 reflections (10.08%)	wwPDB-VP
Wilson B-factor (Å ²)	30.5	Xtriage
Anisotropy	1.025	Xtriage
Bulk solvent k_{sol} (e/Å ³), B_{sol} (Å ²)	0.33 , 6.1	EDS
L-test for twinning ²	$\langle L \rangle = 0.50$, $\langle L^2 \rangle = 0.34$	Xtriage
Estimated twinning fraction	0.025 for -1/2*h-3/2*k,-1/2*h+1/2*k,-l 0.026 for -1/2*h+3/2*k,1/2*h+1/2*k,-l 0.477 for 1/2*h-3/2*k,-1/2*h-1/2*k,-l 0.477 for 1/2*h+3/2*k,1/2*h-1/2*k,-l 0.022 for -h,-k,l	Xtriage
F_o, F_c correlation	0.94	EDS
Total number of atoms	10823	wwPDB-VP
Average B, all atoms (Å ²)	29.0	wwPDB-VP

Xtriage's analysis on translational NCS is as follows: *The largest off-origin peak in the Patterson function is 3.86% of the height of the origin peak. No significant pseudotranslation is detected.*

¹Intensities estimated from amplitudes.

²Theoretical values of $\langle |L| \rangle$, $\langle L^2 \rangle$ for acentric reflections are 0.5, 0.333 respectively for untwinned datasets, and 0.375, 0.2 for perfectly twinned datasets.

5 Model quality [i](#)

5.1 Standard geometry [i](#)

Bond lengths and bond angles in the following residue types are not validated in this section: CL, PLP

The Z score for a bond length (or angle) is the number of standard deviations the observed value is removed from the expected value. A bond length (or angle) with $|Z| > 5$ is considered an outlier worth inspection. RMSZ is the root-mean-square of all Z scores of the bond lengths (or angles).

Mol	Chain	Bond lengths		Bond angles	
		RMSZ	# $ Z > 5$	RMSZ	# $ Z > 5$
1	A	0.45	0/3521	0.56	0/4754
1	B	0.45	1/3521 (0.0%)	0.56	0/4754
1	C	0.45	1/3521 (0.0%)	0.56	0/4754
All	All	0.45	2/10563 (0.0%)	0.56	0/14262

All (2) bond length outliers are listed below:

Mol	Chain	Res	Type	Atoms	Z	Observed(Å)	Ideal(Å)
1	C	435	TRP	CD2-CE2	5.43	1.47	1.41
1	B	435	TRP	CD2-CE2	5.19	1.47	1.41

There are no bond angle outliers.

There are no chirality outliers.

There are no planarity outliers.

5.2 Too-close contacts [i](#)

In the following table, the Non-H and H(model) columns list the number of non-hydrogen atoms and hydrogen atoms in the chain respectively. The H(added) column lists the number of hydrogen atoms added and optimized by MolProbity. The Clashes column lists the number of clashes within the asymmetric unit, whereas Symm-Clashes lists symmetry-related clashes.

Mol	Chain	Non-H	H(model)	H(added)	Clashes	Symm-Clashes
1	A	3458	0	3477	55	0
1	B	3458	0	3477	48	0
1	C	3458	0	3477	49	0
2	A	15	0	6	0	0
2	B	15	0	6	0	0
2	C	15	0	6	0	0

Continued on next page...

Continued from previous page...

Mol	Chain	Non-H	H(model)	H(added)	Clashes	Symm-Clashes
3	A	7	0	4	0	0
3	B	7	0	4	0	0
3	C	7	0	4	0	0
4	B	1	0	0	0	0
4	C	1	0	0	0	0
5	A	122	0	0	1	0
5	B	141	0	0	0	0
5	C	118	0	0	2	0
All	All	10823	0	10461	146	0

The all-atom clashscore is defined as the number of clashes found per 1000 atoms (including hydrogen atoms). The all-atom clashscore for this structure is 7.

All (146) close contacts within the same asymmetric unit are listed below, sorted by their clash magnitude.

Atom-1	Atom-2	Interatomic distance (Å)	Clash overlap (Å)
1:A:151:LYS:HB3	1:A:169:MET:HE3	1.59	0.84
1:A:209:ILE:HD12	1:A:213:SER:HA	1.73	0.70
1:A:119:ILE:HG22	1:A:177:VAL:CG1	2.22	0.69
1:C:215:PHE:HB3	1:C:221:LEU:HG	1.77	0.67
1:B:123:HIS:HD2	1:B:125:CYS:H	1.43	0.67
1:B:333:ARG:HD2	1:B:358:ILE:CD1	2.26	0.66
1:B:252:LYS:O	1:B:252:LYS:HG3	1.95	0.65
1:C:436:ALA:HA	1:C:439:LEU:HD12	1.81	0.62
1:A:3:ASN:OD1	1:A:5:GLU:HG2	1.99	0.62
1:A:123:HIS:HD2	1:A:125:CYS:H	1.48	0.62
1:B:163:LEU:HD13	1:B:193:GLN:HG2	1.81	0.62
1:A:333:ARG:HD2	1:A:358:ILE:CD1	2.30	0.61
1:B:91:GLU:HG3	1:B:252:LYS:HB3	1.82	0.60
1:C:333:ARG:HD2	1:C:358:ILE:HD11	1.84	0.60
1:C:119:ILE:HG22	1:C:177:VAL:HG12	1.85	0.59
1:C:374:THR:N	1:C:375:PRO:CD	2.66	0.58
1:A:374:THR:N	1:A:375:PRO:CD	2.67	0.58
1:C:109:LEU:O	1:C:113:VAL:HG22	2.04	0.58
1:C:123:HIS:HD2	1:C:125:CYS:H	1.52	0.58
1:C:229:ASP:OD1	1:C:253:ARG:HD2	2.03	0.57
1:A:215:PHE:HB3	1:A:221:LEU:HG	1.87	0.57
1:B:109:LEU:HD21	1:B:179:ILE:HD11	1.86	0.57
1:C:94:VAL:HG13	1:C:248:PHE:CD1	2.40	0.57
1:C:333:ARG:HD2	1:C:358:ILE:CD1	2.35	0.57
1:B:120:MET:HE2	1:B:178:ILE:HG12	1.87	0.56

Continued on next page...

Continued from previous page...

Atom-1	Atom-2	Interatomic distance (Å)	Clash overlap (Å)
1:C:151:LYS:HB3	1:C:169:MET:HE3	1.88	0.56
1:A:95:ASN:OD1	1:A:98:PRO:HD3	2.05	0.56
1:C:109:LEU:HD21	1:C:179:ILE:HD11	1.87	0.56
1:C:377:MET:CE	1:C:377:MET:HA	2.35	0.56
1:C:119:ILE:HG22	1:C:177:VAL:CG1	2.36	0.56
1:B:326:HIS:H	1:B:326:HIS:CD2	2.23	0.55
1:C:135:PHE:HD2	1:C:136:ASP:O	1.90	0.55
1:A:109:LEU:HD21	1:A:179:ILE:HD11	1.88	0.55
1:B:414:ASP:HA	1:B:417:LYS:HD2	1.87	0.55
1:C:374:THR:H	1:C:375:PRO:HD3	1.72	0.55
1:A:436:ALA:HA	1:A:439:LEU:HD12	1.89	0.55
1:B:119:ILE:HG22	1:B:177:VAL:CG1	2.37	0.54
1:C:218:CYS:HB3	1:C:294:LYS:HG3	1.89	0.54
1:A:326:HIS:CD2	1:A:326:HIS:H	2.24	0.54
1:C:377:MET:HA	1:C:377:MET:HE2	1.89	0.54
1:B:7:LEU:HA	1:B:10:ILE:HG22	1.90	0.54
1:B:211:HIS:ND1	1:B:326:HIS:HE1	2.06	0.53
1:A:91:GLU:HG3	1:A:252:LYS:HB3	1.91	0.53
1:A:274:HIS:HD2	1:B:277:LYS:HZ1	1.54	0.53
1:B:87:VAL:HG22	1:B:92:TRP:CD1	2.43	0.53
1:A:218:CYS:HB3	1:A:294:LYS:HG3	1.90	0.52
1:B:263:SER:HA	1:B:266:PHE:O	2.09	0.52
1:C:374:THR:N	1:C:375:PRO:HD3	2.24	0.52
1:C:326:HIS:H	1:C:326:HIS:CD2	2.27	0.52
1:C:97:GLN:N	1:C:98:PRO:CD	2.73	0.51
1:B:374:THR:N	1:B:375:PRO:CD	2.74	0.51
1:C:99:LEU:HD11	5:C:633:HOH:O	2.10	0.51
1:B:97:GLN:N	1:B:98:PRO:CD	2.74	0.51
1:C:236:HIS:CD2	1:C:243:ARG:HA	2.45	0.50
1:B:404:LEU:HD21	1:B:422:ASN:ND2	2.26	0.50
1:A:181:GLY:HA3	1:A:208:ASP:O	2.12	0.49
1:A:211:HIS:ND1	1:A:326:HIS:HE1	2.11	0.49
1:A:236:HIS:CD2	1:A:243:ARG:HA	2.48	0.49
1:A:277:LYS:NZ	1:B:274:HIS:CD2	2.81	0.49
1:C:192:GLN:HG3	1:C:196:GLN:HE21	1.78	0.49
1:C:195:ARG:HB2	1:C:227:HIS:HB3	1.94	0.49
1:A:195:ARG:HB2	1:A:227:HIS:HB3	1.94	0.49
1:A:135:PHE:HD2	1:A:136:ASP:O	1.96	0.48
1:B:87:VAL:CG2	1:B:92:TRP:CD1	2.96	0.48
1:B:209:ILE:HD12	1:B:213:SER:HA	1.96	0.48
1:C:263:SER:HA	1:C:266:PHE:O	2.13	0.48

Continued on next page...

Continued from previous page...

Atom-1	Atom-2	Interatomic distance (Å)	Clash overlap (Å)
1:A:242:PRO:HG3	1:A:280:ALA:HB3	1.95	0.47
1:A:274:HIS:HD2	1:B:277:LYS:NZ	2.12	0.47
1:B:436:ALA:HA	1:B:439:LEU:HD12	1.95	0.47
1:A:326:HIS:O	1:A:373:GLY:HA2	2.15	0.47
1:B:236:HIS:CD2	1:B:243:ARG:HA	2.49	0.46
1:C:102:SER:HA	1:C:131:THR:HG21	1.98	0.46
1:A:119:ILE:HG22	1:A:177:VAL:HG12	1.94	0.46
1:A:263:SER:HA	1:A:266:PHE:O	2.15	0.46
1:C:326:HIS:O	1:C:373:GLY:HA2	2.15	0.46
1:A:374:THR:H	1:A:375:PRO:HD3	1.81	0.46
1:C:284:GLN:O	1:C:288:VAL:HG23	2.16	0.46
1:A:284:GLN:O	1:A:288:VAL:HG23	2.16	0.46
1:C:346:CYS:HB3	1:C:351:VAL:HB	1.98	0.45
1:A:97:GLN:N	1:A:98:PRO:CD	2.80	0.45
1:B:102:SER:HA	1:B:131:THR:HG21	1.99	0.45
1:A:274:HIS:CD2	1:B:277:LYS:NZ	2.85	0.45
1:A:7:LEU:HA	1:A:10:ILE:HG22	1.99	0.45
1:A:374:THR:N	1:A:375:PRO:HD3	2.30	0.45
1:B:374:THR:N	1:B:375:PRO:HD3	2.31	0.45
1:B:34:SER:HB2	1:B:237:LYS:HE3	1.98	0.45
1:B:59:PRO:HA	1:B:71:ASP:OD1	2.17	0.45
1:B:215:PHE:HB3	1:B:221:LEU:HG	1.99	0.45
1:B:252:LYS:O	1:B:252:LYS:CG	2.64	0.44
1:A:59:PRO:HA	1:A:71:ASP:OD1	2.17	0.44
1:B:229:ASP:OD1	1:B:253:ARG:HD2	2.17	0.44
1:A:207:ALA:HB3	1:A:231:VAL:HG22	1.99	0.44
1:C:181:GLY:HA3	1:C:208:ASP:O	2.18	0.44
1:C:377:MET:HE1	5:C:699:HOH:O	2.18	0.44
1:A:255:PRO:HB2	1:A:256:GLY:H	1.59	0.44
1:C:94:VAL:HG13	1:C:248:PHE:CE1	2.52	0.44
1:C:394:LEU:O	1:C:398:ILE:HG13	2.17	0.44
1:A:358:ILE:CD1	1:A:368:SER:HB2	2.48	0.44
1:A:229:ASP:OD1	1:A:253:ARG:HD2	2.18	0.44
1:B:333:ARG:HD2	1:B:358:ILE:HD12	1.99	0.44
1:A:277:LYS:NZ	1:B:274:HIS:HD2	2.16	0.43
1:C:7:LEU:HA	1:C:10:ILE:HG22	1.99	0.43
1:B:264:ALA:O	1:B:268:SER:HB2	2.18	0.43
1:A:333:ARG:HD2	1:A:358:ILE:HD11	2.00	0.43
1:B:374:THR:H	1:B:375:PRO:HD3	1.84	0.43
1:C:87:VAL:HG22	1:C:92:TRP:CD1	2.53	0.43
1:C:42:VAL:HG13	1:C:280:ALA:HB1	2.00	0.43

Continued on next page...

Continued from previous page...

Atom-1	Atom-2	Interatomic distance (Å)	Clash overlap (Å)
1:A:277:LYS:HZ1	1:B:274:HIS:HD2	1.65	0.43
1:A:113:VAL:HG11	1:A:177:VAL:HG12	2.01	0.43
1:B:95:ASN:OD1	1:B:98:PRO:HD3	2.18	0.42
1:A:109:LEU:O	1:A:113:VAL:HG22	2.19	0.42
1:C:207:ALA:HB3	1:C:231:VAL:HG22	2.00	0.42
1:A:118:LYS:HE2	1:A:149:GLU:OE1	2.20	0.42
1:C:292:ALA:O	1:C:295:GLU:HB2	2.18	0.42
1:C:315:GLN:HB3	1:C:334:LYS:HZ1	1.83	0.42
1:C:95:ASN:OD1	1:C:98:PRO:HD3	2.19	0.42
1:A:87:VAL:CG2	1:A:92:TRP:CD1	3.02	0.42
1:B:127:GLY:O	1:B:182:TYR:HB3	2.19	0.42
1:C:127:GLY:O	1:C:182:TYR:HB3	2.20	0.42
1:B:284:GLN:O	1:B:288:VAL:HG23	2.20	0.42
1:C:3:ASN:OD1	1:C:5:GLU:HG2	2.19	0.42
1:C:69:PHE:O	1:C:73:ILE:HG13	2.19	0.42
1:A:216:VAL:CG1	1:A:224:PRO:HD2	2.50	0.42
1:A:349:ILE:HA	1:A:429:LYS:HB2	2.01	0.42
1:B:109:LEU:O	1:B:113:VAL:HG22	2.20	0.42
1:C:34:SER:HB3	1:C:211:HIS:CE1	2.55	0.42
1:A:209:ILE:HG21	1:A:224:PRO:HG3	2.02	0.41
1:C:88:SER:C	1:C:90:GLU:H	2.22	0.41
1:A:127:GLY:O	1:A:182:TYR:HB3	2.19	0.41
1:B:3:ASN:OD1	1:B:5:GLU:HG2	2.20	0.41
1:B:42:VAL:HG13	1:B:280:ALA:HB1	2.01	0.41
1:A:115:VAL:O	1:A:116:LYS:HB2	2.20	0.41
5:A:678:HOH:O	1:B:267:PRO:HD2	2.19	0.41
1:B:404:LEU:HD21	1:B:422:ASN:HD22	1.84	0.41
1:A:91:GLU:HG3	1:A:252:LYS:CB	2.49	0.41
1:B:235:THR:O	1:B:241:GLY:N	2.50	0.41
1:A:333:ARG:HD2	1:A:358:ILE:HD12	2.01	0.41
1:A:34:SER:HB2	1:A:237:LYS:HE3	2.03	0.41
1:A:366:SER:HA	1:A:367:PRO:HD2	1.91	0.41
1:C:163:LEU:HD13	1:C:193:GLN:HG2	2.02	0.41
1:C:414:ASP:HA	1:C:417:LYS:HD2	2.02	0.41
1:A:176:LYS:HA	1:A:176:LYS:HD3	1.95	0.40
1:B:326:HIS:O	1:B:373:GLY:HA2	2.22	0.40
1:B:181:GLY:HA3	1:B:208:ASP:O	2.21	0.40
1:C:34:SER:HB2	1:C:237:LYS:HE3	2.03	0.40
1:A:239:LEU:HD22	1:A:288:VAL:HG21	2.04	0.40

There are no symmetry-related clashes.

5.3 Torsion angles [i](#)

5.3.1 Protein backbone [i](#)

In the following table, the Percentiles column shows the percent Ramachandran outliers of the chain as a percentile score with respect to all X-ray entries followed by that with respect to entries of similar resolution.

The Analysed column shows the number of residues for which the backbone conformation was analysed, and the total number of residues.

Mol	Chain	Analysed	Favoured	Allowed	Outliers	Percentiles	
1	A	440/442 (100%)	416 (94%)	22 (5%)	2 (0%)	29	48
1	B	440/442 (100%)	419 (95%)	19 (4%)	2 (0%)	29	48
1	C	440/442 (100%)	420 (96%)	18 (4%)	2 (0%)	29	48
All	All	1320/1326 (100%)	1255 (95%)	59 (4%)	6 (0%)	29	48

All (6) Ramachandran outliers are listed below:

Mol	Chain	Res	Type
1	A	255	PRO
1	B	255	PRO
1	A	334	LYS
1	C	334	LYS
1	B	252	LYS
1	C	255	PRO

5.3.2 Protein sidechains [i](#)

In the following table, the Percentiles column shows the percent sidechain outliers of the chain as a percentile score with respect to all X-ray entries followed by that with respect to entries of similar resolution.

The Analysed column shows the number of residues for which the sidechain conformation was analysed, and the total number of residues.

Mol	Chain	Analysed	Rotameric	Outliers	Percentiles	
1	A	381/381 (100%)	364 (96%)	17 (4%)	27	51
1	B	381/381 (100%)	371 (97%)	10 (3%)	46	72
1	C	381/381 (100%)	369 (97%)	12 (3%)	40	67
All	All	1143/1143 (100%)	1104 (97%)	39 (3%)	37	63

All (39) residues with a non-rotameric sidechain are listed below:

Mol	Chain	Res	Type
1	A	4	ASN
1	A	54	TYR
1	A	87	VAL
1	A	94	VAL
1	A	100	SER
1	A	136	ASP
1	A	158	GLN
1	A	167	ARG
1	A	192	GLN
1	A	193	GLN
1	A	239	LEU
1	A	274	HIS
1	A	305	LYS
1	A	340	SER
1	A	352	SER
1	A	364	CYS
1	A	430	GLN
1	B	54	TYR
1	B	94	VAL
1	B	100	SER
1	B	136	ASP
1	B	192	GLN
1	B	219	ASN
1	B	239	LEU
1	B	274	HIS
1	B	340	SER
1	B	352	SER
1	C	1	MET
1	C	54	TYR
1	C	87	VAL
1	C	94	VAL
1	C	100	SER
1	C	139	LYS
1	C	192	GLN
1	C	193	GLN
1	C	239	LEU
1	C	274	HIS
1	C	340	SER
1	C	430	GLN

Sometimes sidechains can be flipped to improve hydrogen bonding and reduce clashes. All (24) such sidechains are listed below:

Mol	Chain	Res	Type
1	A	4	ASN
1	A	52	ASN
1	A	123	HIS
1	A	158	GLN
1	A	236	HIS
1	A	274	HIS
1	A	326	HIS
1	A	356	ASN
1	B	52	ASN
1	B	123	HIS
1	B	158	GLN
1	B	196	GLN
1	B	236	HIS
1	B	274	HIS
1	B	326	HIS
1	B	356	ASN
1	C	52	ASN
1	C	123	HIS
1	C	158	GLN
1	C	196	GLN
1	C	259	GLN
1	C	326	HIS
1	C	356	ASN
1	C	424	GLN

5.3.3 RNA [i](#)

There are no RNA molecules in this entry.

5.4 Non-standard residues in protein, DNA, RNA chains [i](#)

There are no non-standard protein/DNA/RNA residues in this entry.

5.5 Carbohydrates [i](#)

There are no monosaccharides in this entry.

5.6 Ligand geometry [i](#)

Of 8 ligands modelled in this entry, 2 are monoatomic - leaving 6 for Mogul analysis.

In the following table, the Counts columns list the number of bonds (or angles) for which Mogul statistics could be retrieved, the number of bonds (or angles) that are observed in the model and the number of bonds (or angles) that are defined in the Chemical Component Dictionary. The Link column lists molecule types, if any, to which the group is linked. The Z score for a bond length (or angle) is the number of standard deviations the observed value is removed from the expected value. A bond length (or angle) with $|Z| > 2$ is considered an outlier worth inspection. RMSZ is the root-mean-square of all Z scores of the bond lengths (or angles).

Mol	Type	Chain	Res	Link	Bond lengths			Bond angles		
					Counts	RMSZ	# Z > 2	Counts	RMSZ	# Z > 2
2	PLP	A	501	3	15,15,16	3.15	3 (20%)	20,22,23	1.85	6 (30%)
2	PLP	C	501	3	15,15,16	3.16	3 (20%)	20,22,23	1.82	6 (30%)
3	SER	B	502	2	5,6,6	0.82	0	5,7,7	0.73	0
2	PLP	B	501	3	15,15,16	3.16	3 (20%)	20,22,23	1.64	3 (15%)
3	SER	C	502	2	5,6,6	1.14	1 (20%)	5,7,7	1.22	0
3	SER	A	502	2	5,6,6	1.09	0	5,7,7	1.76	1 (20%)

In the following table, the Chirals column lists the number of chiral outliers, the number of chiral centers analysed, the number of these observed in the model and the number defined in the Chemical Component Dictionary. Similar counts are reported in the Torsion and Rings columns. '-' means no outliers of that kind were identified.

Mol	Type	Chain	Res	Link	Chirals	Torsions	Rings
2	PLP	A	501	3	-	1/6/6/8	0/1/1/1
2	PLP	C	501	3	-	3/6/6/8	0/1/1/1
3	SER	B	502	2	-	0/6/6/6	-
2	PLP	B	501	3	-	3/6/6/8	0/1/1/1
3	SER	C	502	2	-	0/6/6/6	-
3	SER	A	502	2	-	2/6/6/6	-

All (10) bond length outliers are listed below:

Mol	Chain	Res	Type	Atoms	Z	Observed(Å)	Ideal(Å)
2	C	501	PLP	C5-C4	8.96	1.50	1.40
2	B	501	PLP	C5-C4	8.58	1.50	1.40
2	A	501	PLP	C5-C4	8.36	1.49	1.40
2	A	501	PLP	C3-C2	7.55	1.48	1.40
2	B	501	PLP	C3-C2	7.15	1.48	1.40
2	C	501	PLP	C3-C2	6.82	1.47	1.40
2	B	501	PLP	C3-C4	4.30	1.49	1.40
2	C	501	PLP	C3-C4	4.11	1.48	1.40
2	A	501	PLP	C3-C4	4.02	1.48	1.40
3	C	502	SER	OXT-C	-2.05	1.23	1.30

All (16) bond angle outliers are listed below:

Mol	Chain	Res	Type	Atoms	Z	Observed(°)	Ideal(°)
2	C	501	PLP	C4A-C4-C5	4.41	125.48	120.94
2	A	501	PLP	C4A-C4-C5	3.64	124.68	120.94
2	B	501	PLP	C4A-C4-C5	3.40	124.44	120.94
2	A	501	PLP	O3P-P-O4P	-3.35	97.83	106.73
3	A	502	SER	OXT-C-O	-3.05	117.17	124.09
2	A	501	PLP	C3-C4-C5	-3.02	115.48	118.74
2	B	501	PLP	C6-N1-C2	3.02	124.76	119.17
2	A	501	PLP	C5A-C5-C6	-3.00	114.44	119.37
2	C	501	PLP	C6-N1-C2	2.79	124.34	119.17
2	B	501	PLP	O4P-C5A-C5	2.79	114.67	109.35
2	C	501	PLP	O4P-C5A-C5	2.68	114.46	109.35
2	A	501	PLP	C6-C5-C4	2.38	120.03	118.16
2	C	501	PLP	O2P-P-O4P	-2.33	100.53	106.73
2	A	501	PLP	C6-N1-C2	2.19	123.23	119.17
2	C	501	PLP	C3-C4-C5	-2.18	116.39	118.74
2	C	501	PLP	O3P-P-O2P	2.09	115.63	107.64

There are no chirality outliers.

All (9) torsion outliers are listed below:

Mol	Chain	Res	Type	Atoms
2	B	501	PLP	C5A-O4P-P-O2P
2	B	501	PLP	C5A-O4P-P-O3P
2	C	501	PLP	C5A-O4P-P-O2P
2	C	501	PLP	C5A-O4P-P-O3P
2	B	501	PLP	C5A-O4P-P-O1P
3	A	502	SER	C-CA-CB-OG
2	A	501	PLP	C5A-O4P-P-O3P
2	C	501	PLP	C5A-O4P-P-O1P
3	A	502	SER	OXT-C-CA-N

There are no ring outliers.

No monomer is involved in short contacts.

5.7 Other polymers [\(i\)](#)

There are no such residues in this entry.

5.8 Polymer linkage issues

There are no chain breaks in this entry.

6 Fit of model and data [i](#)

6.1 Protein, DNA and RNA chains [i](#)

In the following table, the column labelled ‘#RSRZ > 2’ contains the number (and percentage) of RSRZ outliers, followed by percent RSRZ outliers for the chain as percentile scores relative to all X-ray entries and entries of similar resolution. The OWAB column contains the minimum, median, 95th percentile and maximum values of the occupancy-weighted average B-factor per residue. The column labelled ‘Q < 0.9’ lists the number of (and percentage) of residues with an average occupancy less than 0.9.

Mol	Chain	Analysed	<RSRZ>	#RSRZ>2	OWAB(Å ²)	Q<0.9
1	A	442/442 (100%)	-0.18	2 (0%) 91 91	14, 27, 49, 71	0
1	B	442/442 (100%)	-0.16	1 (0%) 95 95	13, 27, 50, 68	0
1	C	442/442 (100%)	-0.20	2 (0%) 91 91	14, 27, 50, 66	0
All	All	1326/1326 (100%)	-0.18	5 (0%) 92 93	13, 27, 50, 71	0

All (5) RSRZ outliers are listed below:

Mol	Chain	Res	Type	RSRZ
1	C	138	LYS	2.7
1	C	202	ASN	2.4
1	A	413	VAL	2.3
1	B	196	GLN	2.1
1	A	419	LEU	2.1

6.2 Non-standard residues in protein, DNA, RNA chains [i](#)

There are no non-standard protein/DNA/RNA residues in this entry.

6.3 Carbohydrates [i](#)

There are no monosaccharides in this entry.

6.4 Ligands [i](#)

In the following table, the Atoms column lists the number of modelled atoms in the group and the number defined in the chemical component dictionary. The B-factors column lists the minimum, median, 95th percentile and maximum values of B factors of atoms in the group. The column labelled ‘Q < 0.9’ lists the number of atoms with occupancy less than 0.9.

Mol	Type	Chain	Res	Atoms	RSCC	RSR	B-factors(\AA^2)	Q<0.9
4	CL	C	503	1/1	0.91	0.10	28,28,28,28	1
4	CL	B	503	1/1	0.93	0.09	23,23,23,23	0
3	SER	B	502	7/7	0.93	0.13	17,17,18,19	0
3	SER	C	502	7/7	0.96	0.08	16,16,16,17	0
2	PLP	B	501	15/16	0.97	0.12	16,17,17,18	0
3	SER	A	502	7/7	0.97	0.09	13,13,14,14	0
2	PLP	C	501	15/16	0.98	0.12	16,17,17,17	0
2	PLP	A	501	15/16	0.98	0.10	12,13,13,13	0

6.5 Other polymers [i](#)

There are no such residues in this entry.