



Full wwPDB X-ray Structure Validation Report ⓘ

Sep 12, 2023 – 07:00 AM EDT

PDB ID : 4NTS
Title : Apo structure of the catalytic subunit of cAMP-dependent protein kinase
Authors : Bastidas, A.C.; Wu, J.; Taylor, S.S.
Deposited on : 2013-12-02
Resolution : 2.90 Å(reported)

This is a Full wwPDB X-ray Structure Validation Report for a publicly released PDB entry.

We welcome your comments at validation@mail.wwpdb.org

A user guide is available at

<https://www.wwpdb.org/validation/2017/XrayValidationReportHelp>

with specific help available everywhere you see the ⓘ symbol.

The types of validation reports are described at

<http://www.wwpdb.org/validation/2017/FAQs#types>.

The following versions of software and data (see [references ⓘ](#)) were used in the production of this report:

MolProbity : 4.02b-467
Mogul : 1.8.5 (274361), CSD as541be (2020)
Xtrriage (Phenix) : 1.13
EDS : 2.35.1
Percentile statistics : 20191225.v01 (using entries in the PDB archive December 25th 2019)
Refmac : 5.8.0158
CCP4 : 7.0.044 (Gargrove)
Ideal geometry (proteins) : Engh & Huber (2001)
Ideal geometry (DNA, RNA) : Parkinson et al. (1996)
Validation Pipeline (wwPDB-VP) : 2.35.1

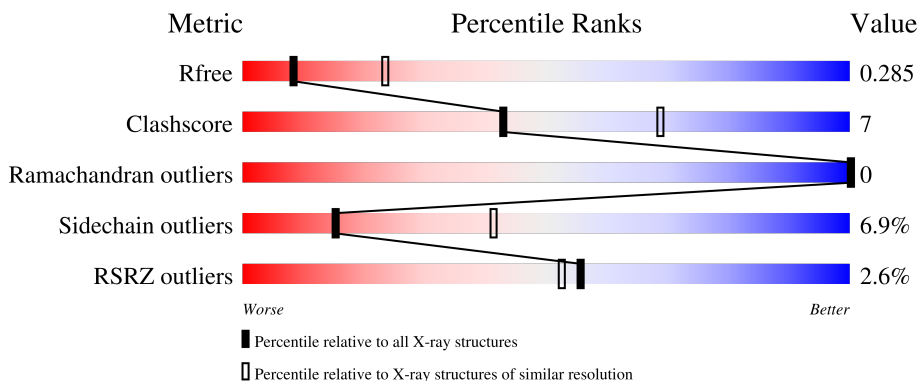
1 Overall quality at a glance

The following experimental techniques were used to determine the structure:

X-RAY DIFFRACTION


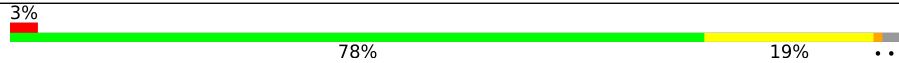
The reported resolution of this entry is 2.90 Å.

Percentile scores (ranging between 0-100) for global validation metrics of the entry are shown in the following graphic. The table shows the number of entries on which the scores are based.



Metric	Whole archive (#Entries)	Similar resolution (#Entries, resolution range(Å))
R_{free}	130704	1957 (2.90-2.90)
Clashscore	141614	2172 (2.90-2.90)
Ramachandran outliers	138981	2115 (2.90-2.90)
Sidechain outliers	138945	2117 (2.90-2.90)
RSRZ outliers	127900	1906 (2.90-2.90)

The table below summarises the geometric issues observed across the polymeric chains and their fit to the electron density. The red, orange, yellow and green segments of the lower bar indicate the fraction of residues that contain outliers for ≥ 3 , 2, 1 and 0 types of geometric quality criteria respectively. A grey segment represents the fraction of residues that are not modelled. The numeric value for each fraction is indicated below the corresponding segment, with a dot representing fractions $\leq 5\%$. The upper red bar (where present) indicates the fraction of residues that have poor fit to the electron density. The numeric value is given above the bar.

Mol	Chain	Length	Quality of chain
1	A	350	 3% 81% 15% ..
1	B	350	 3% 78% 19% ..

2 Entry composition i

There are 2 unique types of molecules in this entry. The entry contains 5227 atoms, of which 0 are hydrogens and 0 are deuteriums.

In the tables below, the ZeroOcc column contains the number of atoms modelled with zero occupancy, the AltConf column contains the number of residues with at least one atom in alternate conformation and the Trace column contains the number of residues modelled with at most 2 atoms.

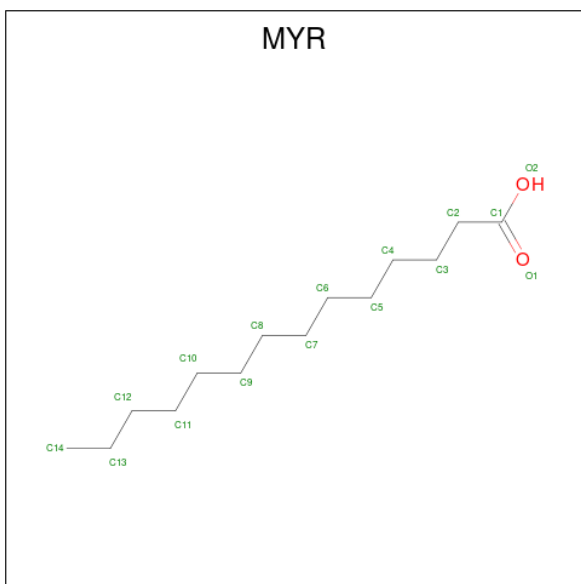
- Molecule 1 is a protein called cAMP-dependent protein kinase catalytic subunit alpha.

Mol	Chain	Residues	Atoms					ZeroOcc	AltConf	Trace	
			Total	C	N	O	P				S
1	A	343	2626	1697	446	473	2	8	0	0	0
1	B	343	2597	1677	442	468	2	8	0	0	0

There are 2 discrepancies between the modelled and reference sequences:

Chain	Residue	Modelled	Actual	Comment	Reference
A	7	CYS	LYS	engineered mutation	UNP P05132
B	7	CYS	LYS	engineered mutation	UNP P05132

- Molecule 2 is MYRISTIC ACID (three-letter code: MYR) (formula: C₁₄H₂₈O₂).

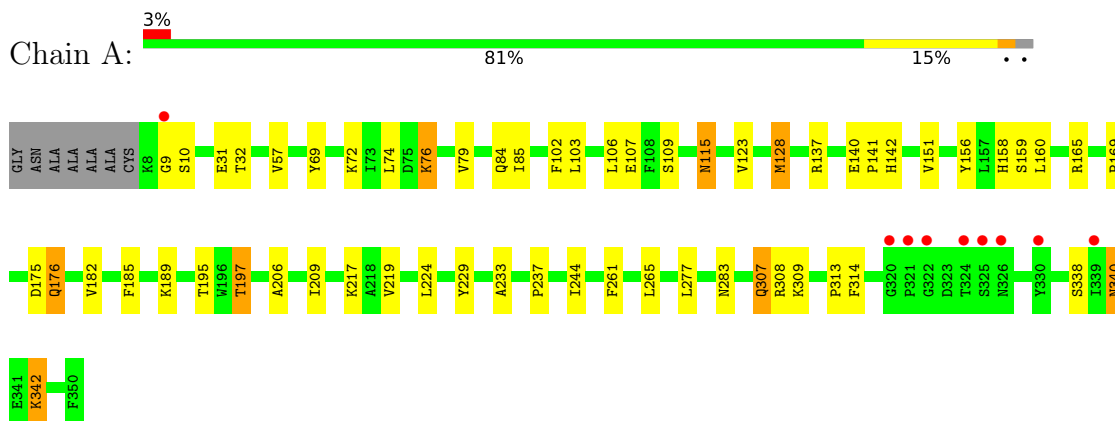


Mol	Chain	Residues	Atoms		ZeroOcc	AltConf
2	A	1	Total	C	0	0
			4	4		

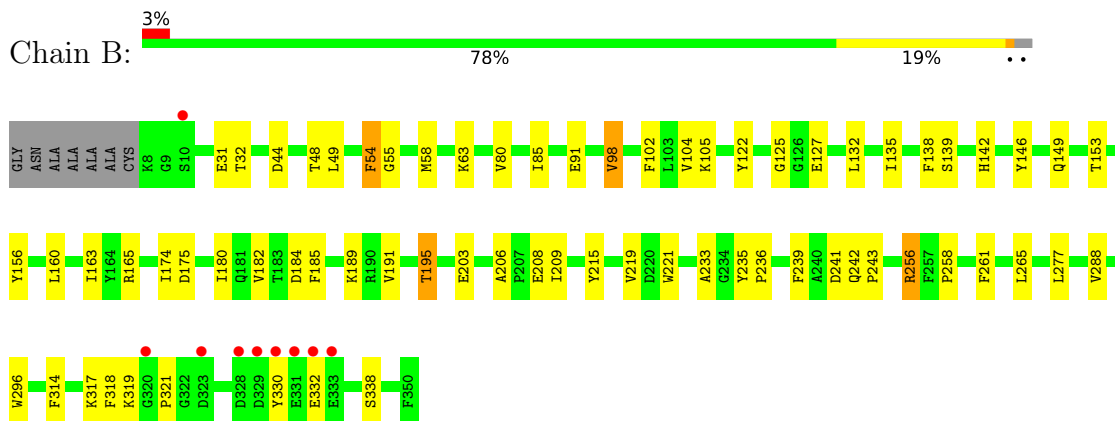
3 Residue-property plots [i](#)

These plots are drawn for all protein, RNA, DNA and oligosaccharide chains in the entry. The first graphic for a chain summarises the proportions of the various outlier classes displayed in the second graphic. The second graphic shows the sequence view annotated by issues in geometry and electron density. Residues are color-coded according to the number of geometric quality criteria for which they contain at least one outlier: green = 0, yellow = 1, orange = 2 and red = 3 or more. A red dot above a residue indicates a poor fit to the electron density ($RSRZ > 2$). Stretches of 2 or more consecutive residues without any outlier are shown as a green connector. Residues present in the sample, but not in the model, are shown in grey.

- Molecule 1: cAMP-dependent protein kinase catalytic subunit alpha



- Molecule 1: cAMP-dependent protein kinase catalytic subunit alpha



4 Data and refinement statistics

Property	Value	Source
Space group	P 1 21 1	Depositor
Cell constants a, b, c, α , β , γ	50.96Å 142.61Å 63.16Å 90.00° 103.65° 90.00°	Depositor
Resolution (Å)	56.38 – 2.90 46.52 – 2.90	Depositor EDS
% Data completeness (in resolution range)	97.5 (56.38-2.90) 97.6 (46.52-2.90)	Depositor EDS
R_{merge}	(Not available)	Depositor
R_{sym}	(Not available)	Depositor
$\langle I/\sigma(I) \rangle$ ¹	2.28 (at 2.91Å)	Xtrriage
Refinement program	REFMAC 5.5.0110	Depositor
R, R_{free}	0.244 , 0.292 0.241 , 0.285	Depositor DCC
R_{free} test set	967 reflections (5.09%)	wwPDB-VP
Wilson B-factor (Å ²)	77.6	Xtrriage
Anisotropy	0.208	Xtrriage
Bulk solvent k_{sol} (e/Å ³), B_{sol} (Å ²)	0.27 , 31.7	EDS
L-test for twinning ²	$\langle L \rangle = 0.49$, $\langle L^2 \rangle = 0.32$	Xtrriage
Estimated twinning fraction	No twinning to report.	Xtrriage
F_o, F_c correlation	0.92	EDS
Total number of atoms	5227	wwPDB-VP
Average B, all atoms (Å ²)	68.0	wwPDB-VP

Xtrriage's analysis on translational NCS is as follows: *The largest off-origin peak in the Patterson function is 4.71% of the height of the origin peak. No significant pseudotranslation is detected.*

¹Intensities estimated from amplitudes.

²Theoretical values of $\langle |L| \rangle$, $\langle L^2 \rangle$ for acentric reflections are 0.5, 0.333 respectively for untwinned datasets, and 0.375, 0.2 for perfectly twinned datasets.

5 Model quality

5.1 Standard geometry

Bond lengths and bond angles in the following residue types are not validated in this section: SEP, MYR, TPO

The Z score for a bond length (or angle) is the number of standard deviations the observed value is removed from the expected value. A bond length (or angle) with $|Z| > 5$ is considered an outlier worth inspection. RMSZ is the root-mean-square of all Z scores of the bond lengths (or angles).

Mol	Chain	Bond lengths		Bond angles	
		RMSZ	# Z >5	RMSZ	# Z >5
1	A	0.35	0/2670	0.50	0/3626
1	B	0.35	0/2642	0.52	0/3592
All	All	0.35	0/5312	0.51	0/7218

There are no bond length outliers.

There are no bond angle outliers.

There are no chirality outliers.

There are no planarity outliers.

5.2 Too-close contacts

In the following table, the Non-H and H(model) columns list the number of non-hydrogen atoms and hydrogen atoms in the chain respectively. The H(added) column lists the number of hydrogen atoms added and optimized by MolProbity. The Clashes column lists the number of clashes within the asymmetric unit, whereas Symm-Clashes lists symmetry-related clashes.

Mol	Chain	Non-H	H(model)	H(added)	Clashes	Symm-Clashes
1	A	2626	0	2388	31	0
1	B	2597	0	2302	36	0
2	A	4	0	7	0	0
All	All	5227	0	4697	67	0

The all-atom clashscore is defined as the number of clashes found per 1000 atoms (including hydrogen atoms). The all-atom clashscore for this structure is 7.

All (67) close contacts within the same asymmetric unit are listed below, sorted by their clash magnitude.

Atom-1	Atom-2	Interatomic distance (Å)	Clash overlap (Å)
1:B:189:LYS:HD3	1:B:195:THR:HG21	1.64	0.76
1:B:318:PHE:CG	1:B:319:LYS:N	2.53	0.76
1:B:132:LEU:O	1:B:135:ILE:O	2.05	0.74
1:A:307:GLN:HB3	1:A:309:LYS:HG3	1.73	0.70
1:A:189:LYS:HD3	1:A:195:THR:HG21	1.72	0.69
1:A:76:LYS:HG2	1:A:115:ASN:HA	1.75	0.67
1:B:256:ARG:HH11	1:B:256:ARG:HG2	1.60	0.67
1:B:163:ILE:CG2	1:B:165:ARG:HG3	2.29	0.63
1:B:163:ILE:HG22	1:B:165:ARG:HG3	1.82	0.61
1:A:209:ILE:HD11	1:A:219:VAL:HG11	1.82	0.60
1:A:142:HIS:CD2	1:A:313:PRO:HB2	2.37	0.60
1:B:149:GLN:O	1:B:153:THR:HG22	2.03	0.59
1:B:258:PRO:O	1:B:261:PHE:HB2	2.02	0.58
1:A:9:GLY:O	1:A:10:SER:HB2	2.04	0.57
1:A:128:MET:HB3	1:A:169:PRO:O	2.04	0.57
1:A:158:HIS:CD2	1:A:217:LYS:HB2	2.40	0.56
1:B:242:GLN:OE1	1:B:243:PRO:HD2	2.05	0.56
1:A:195:THR:HB	1:A:197:TPO:O1P	2.06	0.55
1:B:122:TYR:OH	1:B:321:PRO:CB	2.54	0.55
1:B:221:TRP:CZ2	1:B:288:VAL:HG12	2.41	0.55
1:A:176:GLN:HA	1:A:176:GLN:OE1	2.09	0.53
1:B:206:ALA:HB3	1:B:219:VAL:HG22	1.91	0.53
1:A:151:VAL:HG22	1:A:224:LEU:HD11	1.91	0.52
1:B:318:PHE:CD1	1:B:319:LYS:N	2.78	0.52
1:B:138:PHE:HB3	1:B:142:HIS:HB3	1.92	0.52
1:B:102:PHE:O	1:B:182:VAL:HG23	2.10	0.51
1:A:69:TYR:HE2	1:A:107:GLU:HG3	1.75	0.51
1:B:139:SER:HB2	1:B:142:HIS:HB2	1.93	0.50
1:B:256:ARG:HH11	1:B:256:ARG:CG	2.23	0.50
1:B:104:VAL:HG22	1:B:182:VAL:O	2.11	0.49
1:A:57:VAL:HG22	1:A:72:LYS:HG2	1.94	0.49
1:A:79:VAL:HG13	1:A:84:GLN:HB2	1.94	0.49
1:A:307:GLN:O	1:A:308:ARG:HB2	2.12	0.49
1:A:103:LEU:HD22	1:A:185:PHE:HZ	1.77	0.49
1:A:85:ILE:H	1:A:85:ILE:HD12	1.76	0.48
1:A:69:TYR:CE2	1:A:107:GLU:HG3	2.48	0.48
1:A:233:ALA:HB2	1:A:261:PHE:CZ	2.48	0.48
1:A:277:LEU:H	1:A:277:LEU:HD23	1.78	0.48
1:B:44:ASP:OD2	1:B:63:LYS:HG3	2.13	0.48
1:B:265:LEU:HD23	1:B:296:TRP:CE2	2.48	0.48
1:B:48:THR:HG23	1:B:58:MET:HB3	1.96	0.47
1:A:244:ILE:H	1:A:244:ILE:HD12	1.80	0.47

Continued on next page...

Continued from previous page...

Atom-1	Atom-2	Interatomic distance (Å)	Clash overlap (Å)
1:B:146:TYR:HB3	1:B:180:ILE:HD11	1.97	0.47
1:B:54:PHE:HD2	1:B:55:GLY:H	1.64	0.46
1:B:49:LEU:HD22	1:B:58:MET:HA	1.96	0.46
1:B:80:VAL:HG13	1:B:85:ILE:HD11	1.98	0.46
1:B:235:TYR:HB2	1:B:236:PRO:HD2	1.97	0.46
1:A:307:GLN:HG2	1:A:309:LYS:HD2	1.99	0.45
1:B:125:GLY:HA3	1:B:174:ILE:O	2.17	0.44
1:A:229:TYR:CD2	1:A:237:PRO:HD3	2.52	0.44
1:B:91:GLU:HG3	1:B:185:PHE:HB2	1.98	0.44
1:A:156:TYR:O	1:A:159:SER:HB3	2.18	0.44
1:A:307:GLN:HE21	1:A:307:GLN:HB2	1.70	0.44
1:B:156:TYR:CE2	1:B:160:LEU:HD11	2.52	0.43
1:A:206:ALA:HB3	1:A:219:VAL:HG22	1.99	0.43
1:B:98:VAL:HG22	1:B:156:TYR:HE2	1.84	0.43
1:A:140:GLU:N	1:A:141:PRO:HD2	2.34	0.42
1:A:340:ASN:HD21	1:A:342:LYS:NZ	2.17	0.42
1:B:317:LYS:O	1:B:318:PHE:HB3	2.20	0.42
1:B:209:ILE:HG12	1:B:215:TYR:CD2	2.55	0.41
1:B:256:ARG:CG	1:B:256:ARG:NH1	2.83	0.41
1:B:233:ALA:HB2	1:B:261:PHE:CZ	2.56	0.41
1:A:165:ARG:NH2	1:A:189:LYS:HB2	2.35	0.41
1:A:102:PHE:O	1:A:182:VAL:HG23	2.21	0.41
1:B:208:GLU:HG2	1:B:277:LEU:HD11	2.04	0.40
1:A:106:LEU:HD21	1:A:109:SER:HB2	2.03	0.40
1:B:330:TYR:C	1:B:332:GLU:H	2.25	0.40

There are no symmetry-related clashes.

5.3 Torsion angles [i](#)

5.3.1 Protein backbone [i](#)

In the following table, the Percentiles column shows the percent Ramachandran outliers of the chain as a percentile score with respect to all X-ray entries followed by that with respect to entries of similar resolution.

The Analysed column shows the number of residues for which the backbone conformation was analysed, and the total number of residues.

Mol	Chain	Analysed	Favoured	Allowed	Outliers	Percentiles
1	A	339/350 (97%)	314 (93%)	25 (7%)	0	100 100

Continued on next page...

Continued from previous page...

Mol	Chain	Analysed	Favoured	Allowed	Outliers	Percentiles	
1	B	339/350 (97%)	314 (93%)	25 (7%)	0	100	100
All	All	678/700 (97%)	628 (93%)	50 (7%)	0	100	100

There are no Ramachandran outliers to report.

5.3.2 Protein sidechains [i](#)

In the following table, the Percentiles column shows the percent sidechain outliers of the chain as a percentile score with respect to all X-ray entries followed by that with respect to entries of similar resolution.

The Analysed column shows the number of residues for which the sidechain conformation was analysed, and the total number of residues.

Mol	Chain	Analysed	Rotameric	Outliers	Percentiles	
1	A	236/303 (78%)	219 (93%)	17 (7%)	14	39
1	B	225/303 (74%)	210 (93%)	15 (7%)	16	43
All	All	461/606 (76%)	429 (93%)	32 (7%)	15	41

All (32) residues with a non-rotameric sidechain are listed below:

Mol	Chain	Res	Type
1	A	31	GLU
1	A	32	THR
1	A	74	LEU
1	A	76	LYS
1	A	115	ASN
1	A	123	VAL
1	A	128	MET
1	A	137	ARG
1	A	160	LEU
1	A	175	ASP
1	A	176	GLN
1	A	265	LEU
1	A	283	ASN
1	A	307	GLN
1	A	314	PHE
1	A	340	ASN
1	A	342	LYS
1	B	31	GLU

Continued on next page...

Continued from previous page...

Mol	Chain	Res	Type
1	B	32	THR
1	B	54	PHE
1	B	98	VAL
1	B	105	LYS
1	B	127	GLU
1	B	175	ASP
1	B	184	ASP
1	B	191	VAL
1	B	195	THR
1	B	203	GLU
1	B	239	PHE
1	B	241	ASP
1	B	256	ARG
1	B	314	PHE

Sometimes sidechains can be flipped to improve hydrogen bonding and reduce clashes. All (4) such sidechains are listed below:

Mol	Chain	Res	Type
1	A	77	GLN
1	A	289	ASN
1	A	307	GLN
1	A	340	ASN

5.3.3 RNA [i](#)

There are no RNA molecules in this entry.

5.4 Non-standard residues in protein, DNA, RNA chains [i](#)

4 non-standard protein/DNA/RNA residues are modelled in this entry.

In the following table, the Counts columns list the number of bonds (or angles) for which Mogul statistics could be retrieved, the number of bonds (or angles) that are observed in the model and the number of bonds (or angles) that are defined in the Chemical Component Dictionary. The Link column lists molecule types, if any, to which the group is linked. The Z score for a bond length (or angle) is the number of standard deviations the observed value is removed from the expected value. A bond length (or angle) with $|Z| > 2$ is considered an outlier worth inspection. RMSZ is the root-mean-square of all Z scores of the bond lengths (or angles).

Mol	Type	Chain	Res	Link	Bond lengths			Bond angles		
					Counts	RMSZ	# Z > 2	Counts	RMSZ	# Z > 2
1	TPO	A	197	1	8,10,11	0.69	0	10,14,16	1.11	1 (10%)
1	SEP	A	338	1	8,9,10	1.55	1 (12%)	8,12,14	1.52	1 (12%)
1	SEP	B	338	1	8,9,10	1.53	1 (12%)	8,12,14	1.88	2 (25%)
1	TPO	B	197	1	8,10,11	0.79	0	10,14,16	0.97	0

In the following table, the Chirals column lists the number of chiral outliers, the number of chiral centers analysed, the number of these observed in the model and the number defined in the Chemical Component Dictionary. Similar counts are reported in the Torsion and Rings columns. '-' means no outliers of that kind were identified.

Mol	Type	Chain	Res	Link	Chirals	Torsions	Rings
1	TPO	A	197	1	-	0/9/11/13	-
1	SEP	A	338	1	-	2/5/8/10	-
1	SEP	B	338	1	-	3/5/8/10	-
1	TPO	B	197	1	-	1/9/11/13	-

All (2) bond length outliers are listed below:

Mol	Chain	Res	Type	Atoms	Z	Observed(Å)	Ideal(Å)
1	B	338	SEP	P-O1P	3.41	1.61	1.50
1	A	338	SEP	P-O1P	3.40	1.61	1.50

All (4) bond angle outliers are listed below:

Mol	Chain	Res	Type	Atoms	Z	Observed(°)	Ideal(°)
1	B	338	SEP	OG-CB-CA	4.06	112.10	108.14
1	A	338	SEP	OG-CB-CA	3.09	111.16	108.14
1	B	338	SEP	P-OG-CB	-2.58	111.20	118.30
1	A	197	TPO	O3P-P-O2P	2.00	115.29	107.64

There are no chirality outliers.

All (6) torsion outliers are listed below:

Mol	Chain	Res	Type	Atoms
1	A	338	SEP	CA-CB-OG-P
1	B	197	TPO	O-C-CA-CB
1	B	338	SEP	CA-CB-OG-P
1	A	338	SEP	N-CA-CB-OG
1	B	338	SEP	N-CA-CB-OG
1	B	338	SEP	CB-OG-P-O2P

There are no ring outliers.

1 monomer is involved in 1 short contact:

Mol	Chain	Res	Type	Clashes	Symm-Clashes
1	A	197	TPO	1	0

5.5 Carbohydrates [i](#)

There are no monosaccharides in this entry.

5.6 Ligand geometry [i](#)

1 ligand is modelled in this entry.

In the following table, the Counts columns list the number of bonds (or angles) for which Mogul statistics could be retrieved, the number of bonds (or angles) that are observed in the model and the number of bonds (or angles) that are defined in the Chemical Component Dictionary. The Link column lists molecule types, if any, to which the group is linked. The Z score for a bond length (or angle) is the number of standard deviations the observed value is removed from the expected value. A bond length (or angle) with $|Z| > 2$ is considered an outlier worth inspection. RMSZ is the root-mean-square of all Z scores of the bond lengths (or angles).

Mol	Type	Chain	Res	Link	Bond lengths			Bond angles		
					Counts	RMSZ	$\# Z > 2$	Counts	RMSZ	$\# Z > 2$
2	MYR	A	401	-	3,3,15	0.39	0	2,2,15	0.61	0

In the following table, the Chirals column lists the number of chiral outliers, the number of chiral centers analysed, the number of these observed in the model and the number defined in the Chemical Component Dictionary. Similar counts are reported in the Torsion and Rings columns. '-' means no outliers of that kind were identified.

Mol	Type	Chain	Res	Link	Chirals	Torsions	Rings
2	MYR	A	401	-	-	0/1/1/13	-

There are no bond length outliers.

There are no bond angle outliers.

There are no chirality outliers.

There are no torsion outliers.

There are no ring outliers.

No monomer is involved in short contacts.

5.7 Other polymers [i](#)

There are no such residues in this entry.

5.8 Polymer linkage issues [i](#)

There are no chain breaks in this entry.

6 Fit of model and data [i](#)

6.1 Protein, DNA and RNA chains [i](#)

In the following table, the column labelled ‘#RSRZ> 2’ contains the number (and percentage) of RSRZ outliers, followed by percent RSRZ outliers for the chain as percentile scores relative to all X-ray entries and entries of similar resolution. The OWAB column contains the minimum, median, 95th percentile and maximum values of the occupancy-weighted average B-factor per residue. The column labelled ‘Q< 0.9’ lists the number of (and percentage) of residues with an average occupancy less than 0.9.

Mol	Chain	Analysed	<RSRZ>	#RSRZ>2	OWAB(Å ²)	Q<0.9
1	A	341/350 (97%)	0.05	9 (2%) 56 52	41, 68, 110, 152	0
1	B	341/350 (97%)	-0.08	9 (2%) 56 52	38, 63, 115, 157	0
All	All	682/700 (97%)	-0.02	18 (2%) 56 52	38, 66, 115, 157	0

All (18) RSRZ outliers are listed below:

Mol	Chain	Res	Type	RSRZ
1	A	325	SER	8.3
1	A	320	GLY	6.4
1	B	10	SER	6.2
1	A	322	GLY	5.9
1	A	324	THR	5.9
1	A	326	ASN	5.0
1	B	333	GLU	4.1
1	B	330	TYR	4.1
1	B	329	ASP	3.9
1	B	320	GLY	3.4
1	A	9	GLY	3.1
1	B	331	GLU	3.1
1	A	321	PRO	2.9
1	B	323	ASP	2.6
1	B	332	GLU	2.5
1	B	328	ASP	2.3
1	A	330	TYR	2.1
1	A	339	ILE	2.1

6.2 Non-standard residues in protein, DNA, RNA chains [i](#)

In the following table, the Atoms column lists the number of modelled atoms in the group and the number defined in the chemical component dictionary. The B-factors column lists the minimum, median, 95th percentile and maximum values of B factors of atoms in the group. The column

labelled 'Q< 0.9' lists the number of atoms with occupancy less than 0.9.

Mol	Type	Chain	Res	Atoms	RSCC	RSR	B-factors(\AA^2)	Q<0.9
1	SEP	B	338	10/11	0.91	0.11	94,98,105,109	0
1	TPO	B	197	11/12	0.95	0.14	53,56,57,58	0
1	SEP	A	338	10/11	0.95	0.10	77,80,86,86	0
1	TPO	A	197	11/12	0.97	0.21	50,53,55,56	0

6.3 Carbohydrates [i](#)

There are no monosaccharides in this entry.

6.4 Ligands [i](#)

In the following table, the Atoms column lists the number of modelled atoms in the group and the number defined in the chemical component dictionary. The B-factors column lists the minimum, median, 95th percentile and maximum values of B factors of atoms in the group. The column labelled 'Q< 0.9' lists the number of atoms with occupancy less than 0.9.

Mol	Type	Chain	Res	Atoms	RSCC	RSR	B-factors(\AA^2)	Q<0.9
2	MYR	A	401	4/16	0.87	0.61	77,80,83,85	0

6.5 Other polymers [i](#)

There are no such residues in this entry.