



Full wwPDB X-ray Structure Validation Report ⓘ

Nov 2, 2024 – 07:24 PM EDT

PDB ID : 4NGN
Title : Crystal Structure of Glutamate Carboxypeptidase II in a complex with urea-based inhibitor
Authors : Tykvart, J.; Pachl, P.
Deposited on : 2013-11-02
Resolution : 1.64 Å(reported)

This is a Full wwPDB X-ray Structure Validation Report for a publicly released PDB entry.

We welcome your comments at validation@mail.wwpdb.org

A user guide is available at

<https://www.wwpdb.org/validation/2017/XrayValidationReportHelp>

with specific help available everywhere you see the ⓘ symbol.

The types of validation reports are described at

<http://www.wwpdb.org/validation/2017/FAQs#types>.

The following versions of software and data (see [references ⓘ](#)) were used in the production of this report:

MolProbity : 4.02b-467
Mogul : 2022.3.0, CSD as543be (2022)
Xtriage (Phenix) : 1.20.1
EDS : 3.0
buster-report : 1.1.7 (2018)
Percentile statistics : 20231227.v01 (using entries in the PDB archive December 27th 2023)
CCP4 : 9.0.003 (Gargrove)
Density-Fitness : 1.0.11
Ideal geometry (proteins) : Engh & Huber (2001)
Ideal geometry (DNA, RNA) : Parkinson et al. (1996)
Validation Pipeline (wwPDB-VP) : 2.39

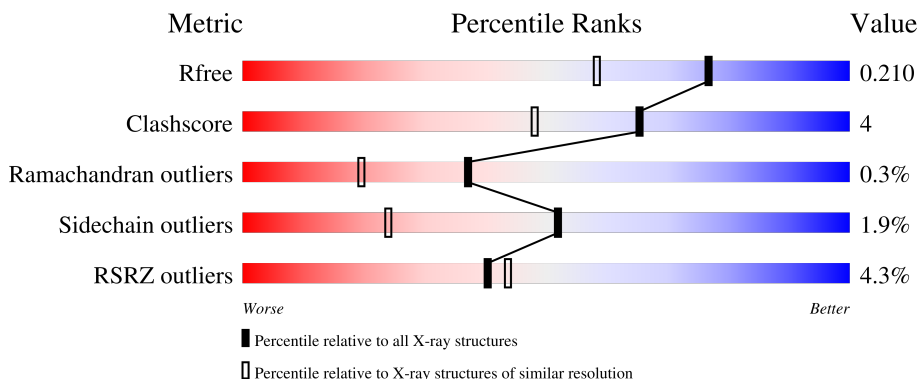
1 Overall quality at a glance

The following experimental techniques were used to determine the structure:

X-RAY DIFFRACTION

The reported resolution of this entry is 1.64 Å.

Percentile scores (ranging between 0-100) for global validation metrics of the entry are shown in the following graphic. The table shows the number of entries on which the scores are based.



Metric	Whole archive (#Entries)	Similar resolution (#Entries, resolution range(Å))
R_{free}	164625	1015 (1.64-1.64)
Clashscore	180529	1093 (1.64-1.64)
Ramachandran outliers	177936	1077 (1.64-1.64)
Sidechain outliers	177891	1077 (1.64-1.64)
RSRZ outliers	164620	1015 (1.64-1.64)

The table below summarises the geometric issues observed across the polymeric chains and their fit to the electron density. The red, orange, yellow and green segments of the lower bar indicate the fraction of residues that contain outliers for ≥ 3 , 2, 1 and 0 types of geometric quality criteria respectively. A grey segment represents the fraction of residues that are not modelled. The numeric value for each fraction is indicated below the corresponding segment, with a dot representing fractions $\leq 5\%$. The upper red bar (where present) indicates the fraction of residues that have poor fit to the electron density. The numeric value is given above the bar.

Mol	Chain	Length	Quality of chain
1	A	739	
2	B	2	
2	C	2	
3	D	3	
4	E	4	

2 Entry composition i

There are 10 unique types of molecules in this entry. The entry contains 6305 atoms, of which 0 are hydrogens and 0 are deuteriums.

In the tables below, the ZeroOcc column contains the number of atoms modelled with zero occupancy, the AltConf column contains the number of residues with at least one atom in alternate conformation and the Trace column contains the number of residues modelled with at most 2 atoms.

- Molecule 1 is a protein called Glutamate carboxypeptidase 2.

Mol	Chain	Residues	Atoms					ZeroOcc	AltConf	Trace
			Total	C	N	O	S			
1	A	696	5547	3570	925	1034	18	0	9	0

There are 32 discrepancies between the modelled and reference sequences:

Chain	Residue	Modelled	Actual	Comment	Reference
A	12	ARG	-	expression tag	UNP Q04609
A	13	SER	-	expression tag	UNP Q04609
A	14	GLY	-	expression tag	UNP Q04609
A	15	LEU	-	expression tag	UNP Q04609
A	16	ASN	-	expression tag	UNP Q04609
A	17	ASP	-	expression tag	UNP Q04609
A	18	ILE	-	expression tag	UNP Q04609
A	19	PHE	-	expression tag	UNP Q04609
A	20	GLU	-	expression tag	UNP Q04609
A	21	ALA	-	expression tag	UNP Q04609
A	22	GLN	-	expression tag	UNP Q04609
A	23	LYS	-	expression tag	UNP Q04609
A	24	ILE	-	expression tag	UNP Q04609
A	25	GLU	-	expression tag	UNP Q04609
A	26	TRP	-	expression tag	UNP Q04609
A	27	HIS	-	expression tag	UNP Q04609
A	28	GLU	-	expression tag	UNP Q04609
A	29	GLY	-	expression tag	UNP Q04609
A	30	SER	-	expression tag	UNP Q04609
A	31	GLY	-	expression tag	UNP Q04609
A	32	SER	-	expression tag	UNP Q04609
A	33	GLY	-	expression tag	UNP Q04609
A	34	SER	-	expression tag	UNP Q04609
A	35	GLU	-	expression tag	UNP Q04609
A	36	ASN	-	expression tag	UNP Q04609
A	37	LEU	-	expression tag	UNP Q04609
A	38	TYR	-	expression tag	UNP Q04609

Continued on next page...

Continued from previous page...

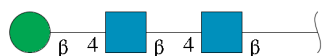
Chain	Residue	Modelled	Actual	Comment	Reference
A	39	PHE	-	expression tag	UNP Q04609
A	40	GLN	-	expression tag	UNP Q04609
A	41	GLY	-	expression tag	UNP Q04609
A	42	ARG	-	expression tag	UNP Q04609
A	43	SER	-	expression tag	UNP Q04609

- Molecule 2 is an oligosaccharide called 2-acetamido-2-deoxy-beta-D-glucopyranose-(1-4)-2-acetamido-2-deoxy-beta-D-glucopyranose.



Mol	Chain	Residues	Atoms				ZeroOcc	AltConf	Trace
			Total	C	N	O			
2	B	2	28	16	2	10	0	0	0
2	C	2	28	16	2	10	0	0	0

- Molecule 3 is an oligosaccharide called beta-D-mannopyranose-(1-4)-2-acetamido-2-deoxy-beta-D-glucopyranose-(1-4)-2-acetamido-2-deoxy-beta-D-glucopyranose.



Mol	Chain	Residues	Atoms				ZeroOcc	AltConf	Trace
			Total	C	N	O			
3	D	3	39	22	2	15	0	0	0

- Molecule 4 is an oligosaccharide called alpha-D-mannopyranose-(1-3)-beta-D-mannopyranose-(1-4)-2-acetamido-2-deoxy-beta-D-glucopyranose-(1-4)-2-acetamido-2-deoxy-beta-D-glucopyranose.



Mol	Chain	Residues	Atoms				ZeroOcc	AltConf	Trace
			Total	C	N	O			
4	E	4	50	28	2	20	0	0	0

- Molecule 5 is 2-acetamido-2-deoxy-beta-D-glucopyranose (three-letter code: NAG) (formula: $C_8H_{15}NO_6$).



Mol	Chain	Residues	Atoms				ZeroOcc	AltConf
5	A	1	Total	C	N	O	0	0
			14	8	1	5		
5	A	1	Total	C	N	O	0	0
			14	8	1	5		
5	A	1	Total	C	N	O	0	0
			14	8	1	5		

- Molecule 6 is ZINC ION (three-letter code: ZN) (formula: Zn).

Mol	Chain	Residues	Atoms		ZeroOcc	AltConf
6	A	2	Total	Zn	0	0
			2	2		

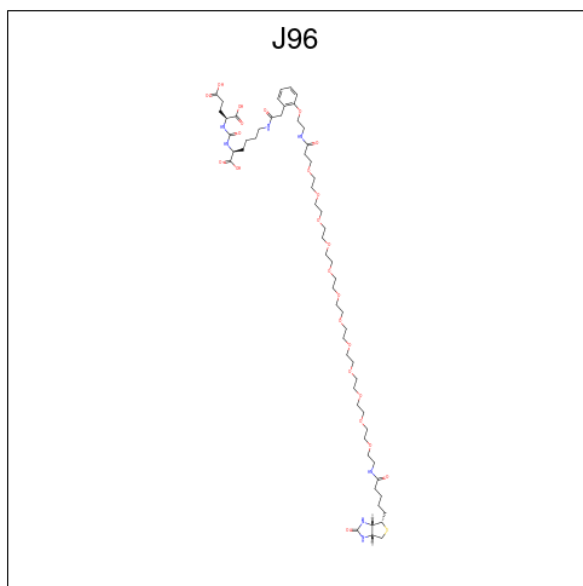
- Molecule 7 is CHLORIDE ION (three-letter code: CL) (formula: Cl).

Mol	Chain	Residues	Atoms		ZeroOcc	AltConf
7	A	1	Total	Cl	0	0
			1	1		

- Molecule 8 is CALCIUM ION (three-letter code: CA) (formula: Ca).

Mol	Chain	Residues	Atoms		ZeroOcc	AltConf
8	A	1	Total	Ca	0	0
			1	1		

- Molecule 9 is N-{{[(1S)-1-carboxy-5-({[2-({4,4-dioxo-48-[(3aS,4S,6aR)-2-oxohexahydro-1H-tieno[3,4-d]imidazol-4-yl]-7,10,13,16,19,22,25,28,31,34,37,40-dodecaoxa-3,43-diazaoctatetracont-1-yl}oxy)phenyl]acetyl}amino)pentyl]carbamoyl}-L-glutamic acid (three-letter code: J96) (formula: C₅₉H₉₉N₇O₂₄S).



Mol	Chain	Residues	Atoms				ZeroOcc	AltConf
			Total	C	N	O		
9	A	1	24	13	3	8	0	0

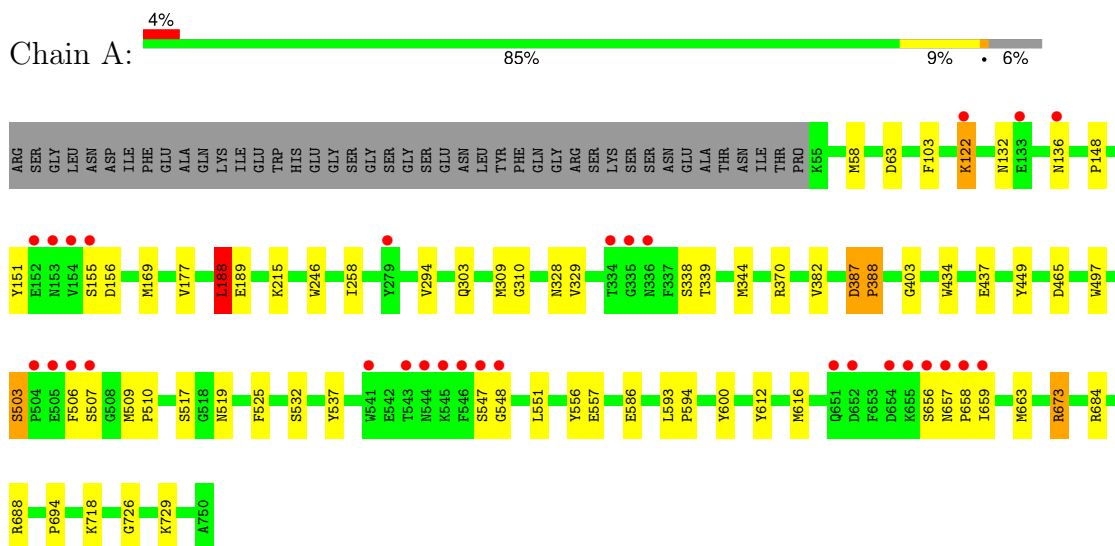
- Molecule 10 is water.

Mol	Chain	Residues	Atoms		ZeroOcc	AltConf
			Total	O		
10	A	541	543	543	0	3

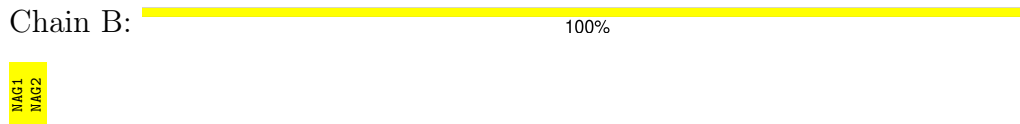
3 Residue-property plots [i](#)

These plots are drawn for all protein, RNA, DNA and oligosaccharide chains in the entry. The first graphic for a chain summarises the proportions of the various outlier classes displayed in the second graphic. The second graphic shows the sequence view annotated by issues in geometry and electron density. Residues are color-coded according to the number of geometric quality criteria for which they contain at least one outlier: green = 0, yellow = 1, orange = 2 and red = 3 or more. A red dot above a residue indicates a poor fit to the electron density ($RSRZ > 2$). Stretches of 2 or more consecutive residues without any outlier are shown as a green connector. Residues present in the sample, but not in the model, are shown in grey.

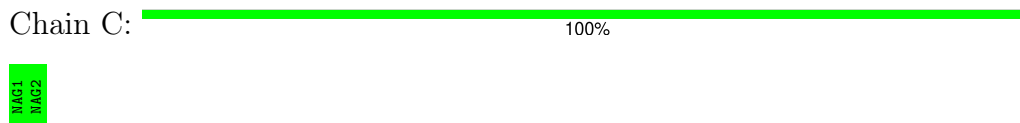
- Molecule 1: Glutamate carboxypeptidase 2



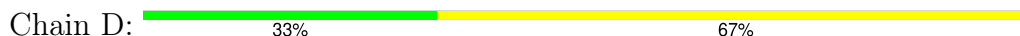
- Molecule 2: 2-acetamido-2-deoxy-beta-D-glucopyranose-(1-4)-2-acetamido-2-deoxy-beta-D-glucopyranose



- Molecule 2: 2-acetamido-2-deoxy-beta-D-glucopyranose-(1-4)-2-acetamido-2-deoxy-beta-D-glucopyranose



- Molecule 3: beta-D-mannopyranose-(1-4)-2-acetamido-2-deoxy-beta-D-glucopyranose-(1-4)-2-acetamido-2-deoxy-beta-D-glucopyranose



MAG1
MAG2
BMA3

- Molecule 4: alpha-D-mannopyranose-(1-3)-beta-D-mannopyranose-(1-4)-2-acetamido-2-deoxy-beta-D-glucopyranose-(1-4)-2-acetamido-2-deoxy-beta-D-glucopyranose

Chain E:

100%

MAG1
MAG2
BMA3
MAN4

4 Data and refinement statistics

Property	Value	Source
Space group	I 2 2 2	Depositor
Cell constants a, b, c, α , β , γ	101.34Å 130.02Å 158.79Å 90.00° 90.00° 90.00°	Depositor
Resolution (Å)	45.25 – 1.64 45.25 – 1.64	Depositor EDS
% Data completeness (in resolution range)	99.8 (45.25-1.64) 99.9 (45.25-1.64)	Depositor EDS
R_{merge}	0.04	Depositor
R_{sym}	(Not available)	Depositor
$\langle I/\sigma(I) \rangle$ ¹	2.56 (at 1.64Å)	Xtrriage
Refinement program	REFMAC	Depositor
R, R_{free}	0.185 , 0.213 0.179 , 0.210	Depositor DCC
R_{free} test set	6387 reflections (5.00%)	wwPDB-VP
Wilson B-factor (Å ²)	20.5	Xtrriage
Anisotropy	0.088	Xtrriage
Bulk solvent k_{sol} (e/Å ³), B_{sol} (Å ²)	0.35 , 37.7	EDS
L-test for twinning ²	$\langle L \rangle = 0.49$, $\langle L^2 \rangle = 0.33$	Xtrriage
Estimated twinning fraction	No twinning to report.	Xtrriage
F_o, F_c correlation	0.97	EDS
Total number of atoms	6305	wwPDB-VP
Average B, all atoms (Å ²)	24.0	wwPDB-VP

Xtrriage's analysis on translational NCS is as follows: *The largest off-origin peak in the Patterson function is 3.50% of the height of the origin peak. No significant pseudotranslation is detected.*

¹Intensities estimated from amplitudes.

²Theoretical values of $\langle |L| \rangle$, $\langle L^2 \rangle$ for acentric reflections are 0.5, 0.333 respectively for untwinned datasets, and 0.375, 0.2 for perfectly twinned datasets.

5 Model quality i

5.1 Standard geometry i

Bond lengths and bond angles in the following residue types are not validated in this section: CL, MAN, J96, BMA, ZN, NAG, CA

The Z score for a bond length (or angle) is the number of standard deviations the observed value is removed from the expected value. A bond length (or angle) with $|Z| > 5$ is considered an outlier worth inspection. RMSZ is the root-mean-square of all Z scores of the bond lengths (or angles).

Mol	Chain	Bond lengths		Bond angles	
		RMSZ	# Z >5	RMSZ	# Z >5
1	A	1.01	4/5730 (0.1%)	0.99	11/7772 (0.1%)

All (4) bond length outliers are listed below:

Mol	Chain	Res	Type	Atoms	Z	Observed(Å)	Ideal(Å)
1	A	437	GLU	CD-OE2	-6.06	1.19	1.25
1	A	434	TRP	CE3-CZ3	5.88	1.48	1.38
1	A	525	PHE	CG-CD1	5.60	1.47	1.38
1	A	557	GLU	CD-OE2	-5.25	1.19	1.25

All (11) bond angle outliers are listed below:

Mol	Chain	Res	Type	Atoms	Z	Observed(°)	Ideal(°)
1	A	673	ARG	NE-CZ-NH2	-8.49	116.05	120.30
1	A	370	ARG	NE-CZ-NH1	7.91	124.26	120.30
1	A	673	ARG	NE-CZ-NH1	7.10	123.85	120.30
1	A	688	ARG	NE-CZ-NH1	-6.29	117.16	120.30
1	A	309	MET	CG-SD-CE	-6.08	90.48	100.20
1	A	387	ASP	CB-CG-OD1	-5.86	113.03	118.30
1	A	63	ASP	CB-CG-OD1	5.44	123.20	118.30
1	A	465	ASP	CB-CG-OD1	5.44	123.20	118.30
1	A	188	LEU	CA-CB-CG	5.42	127.78	115.30
1	A	370	ARG	NE-CZ-NH2	-5.04	117.78	120.30
1	A	684	ARG	NE-CZ-NH1	5.01	122.81	120.30

There are no chirality outliers.

There are no planarity outliers.

5.2 Too-close contacts [i](#)

In the following table, the Non-H and H(model) columns list the number of non-hydrogen atoms and hydrogen atoms in the chain respectively. The H(added) column lists the number of hydrogen atoms added and optimized by MolProbity. The Clashes column lists the number of clashes within the asymmetric unit, whereas Symm-Clashes lists symmetry-related clashes.

Mol	Chain	Non-H	H(model)	H(added)	Clashes	Symm-Clashes
1	A	5547	0	5374	42	0
2	B	28	0	25	0	0
2	C	28	0	25	0	0
3	D	39	0	34	0	0
4	E	50	0	43	0	0
5	A	42	0	39	1	0
6	A	2	0	0	0	0
7	A	1	0	0	0	0
8	A	1	0	0	0	0
9	A	24	0	17	0	0
10	A	543	0	0	3	1
All	All	6305	0	5557	42	1

The all-atom clashscore is defined as the number of clashes found per 1000 atoms (including hydrogen atoms). The all-atom clashscore for this structure is 4.

All (42) close contacts within the same asymmetric unit are listed below, sorted by their clash magnitude.

Atom-1	Atom-2	Interatomic distance (Å)	Clash overlap (Å)
1:A:659:ILE:O	1:A:663[B]:MET:HG3	1.78	0.83
1:A:58:MET:CE	1:A:586:GLU:HG2	2.09	0.81
1:A:506:PHE:CB	1:A:509:MET:HG3	2.12	0.79
1:A:58:MET:HE1	1:A:586:GLU:HG2	1.65	0.79
1:A:122:LYS:HD2	1:A:122:LYS:N	2.08	0.66
1:A:122:LYS:H	1:A:122:LYS:CD	2.10	0.65
1:A:188:LEU:HD11	1:A:329:VAL:HG11	1.80	0.63
1:A:122:LYS:HD2	1:A:122:LYS:H	1.66	0.61
1:A:132:ASN:HD21	1:A:136:ASN:HD22	1.52	0.58
1:A:506:PHE:O	1:A:507:SER:HB3	2.03	0.58
1:A:215:LYS:HE2	10:A:1133:HOH:O	2.03	0.58
1:A:155:SER:O	1:A:156:ASP:HB2	2.06	0.56
1:A:177:VAL:HG12	1:A:188:LEU:HD21	1.91	0.53
1:A:612:TYR:CZ	1:A:616:MET:HG3	2.43	0.53
1:A:659:ILE:HG22	1:A:663[B]:MET:CE	2.39	0.52
1:A:188:LEU:HD11	1:A:329:VAL:CG1	2.40	0.52

Continued on next page...

Continued from previous page...

Atom-1	Atom-2	Interatomic distance (Å)	Clash overlap (Å)
1:A:246:TRP:CD1	5:A:807:NAG:H83	2.46	0.50
1:A:551:LEU:HD22	1:A:556:TYR:HB2	1.94	0.48
1:A:188:LEU:CD1	1:A:329:VAL:HG11	2.45	0.47
1:A:663[A]:MET:HE2	1:A:663[A]:MET:HB2	1.68	0.47
1:A:58:MET:HE2	1:A:586:GLU:HG2	1.96	0.46
1:A:258:ILE:HD13	1:A:294:VAL:HB	1.98	0.46
1:A:517:SER:HB2	1:A:694:PRO:HG3	1.99	0.45
1:A:103:PHE:O	1:A:403:GLY:HA3	2.18	0.44
1:A:507:SER:HA	10:A:1145:HOH:O	2.18	0.44
1:A:586:GLU:HA	1:A:586:GLU:OE1	2.18	0.44
1:A:656:SER:O	1:A:658:PRO:HD3	2.18	0.43
1:A:169:MET:HA	1:A:344:MET:O	2.17	0.43
1:A:547:SER:O	1:A:548:GLY:C	2.54	0.43
1:A:148:PRO:HG2	1:A:151:TYR:CD1	2.53	0.43
1:A:497:TRP:CE2	1:A:510:PRO:HB2	2.54	0.42
1:A:310:GLY:O	1:A:328:ASN:HB3	2.20	0.42
1:A:449:TYR:O	1:A:532:SER:HA	2.20	0.41
1:A:503:SER:HB3	1:A:509:MET:O	2.19	0.41
1:A:657:ASN:HA	1:A:658:PRO:HD2	1.81	0.41
1:A:215:LYS:HE3	10:A:1209:HOH:O	2.20	0.41
1:A:659:ILE:HG22	1:A:663[B]:MET:HE2	2.02	0.41
1:A:718:LYS:HD3	1:A:718:LYS:HA	1.76	0.41
1:A:387:ASP:HA	1:A:388:PRO:HA	1.80	0.41
1:A:593:LEU:HA	1:A:594:PRO:HD3	1.99	0.41
1:A:551:LEU:HD23	1:A:551:LEU:HA	1.81	0.40
1:A:726:GLY:HA2	1:A:729[B]:LYS:HE3	2.04	0.40

All (1) symmetry-related close contacts are listed below. The label for Atom-2 includes the symmetry operator and encoded unit-cell translations to be applied.

Atom-1	Atom-2	Interatomic distance (Å)	Clash overlap (Å)
10:A:1352:HOH:O	10:A:1352:HOH:O[2_555]	2.15	0.05

5.3 Torsion angles [i](#)

5.3.1 Protein backbone [i](#)

In the following table, the Percentiles column shows the percent Ramachandran outliers of the chain as a percentile score with respect to all X-ray entries followed by that with respect to entries of similar resolution.

The Analysed column shows the number of residues for which the backbone conformation was analysed, and the total number of residues.

Mol	Chain	Analysed	Favoured	Allowed	Outliers	Percentiles
1	A	703/739 (95%)	679 (97%)	22 (3%)	2 (0%)	37 19

All (2) Ramachandran outliers are listed below:

Mol	Chain	Res	Type
1	A	338	SER
1	A	382	VAL

5.3.2 Protein sidechains [i](#)

In the following table, the Percentiles column shows the percent sidechain outliers of the chain as a percentile score with respect to all X-ray entries followed by that with respect to entries of similar resolution.

The Analysed column shows the number of residues for which the sidechain conformation was analysed, and the total number of residues.

Mol	Chain	Analysed	Rotameric	Outliers	Percentiles
1	A	590/629 (94%)	579 (98%)	11 (2%)	52 24

All (11) residues with a non-rotameric sidechain are listed below:

Mol	Chain	Res	Type
1	A	122	LYS
1	A	188	LEU
1	A	189	GLU
1	A	303	GLN
1	A	339	THR
1	A	388	PRO
1	A	503	SER
1	A	519	ASN
1	A	537	TYR
1	A	600	TYR
1	A	673	ARG

Sometimes sidechains can be flipped to improve hydrogen bonding and reduce clashes. All (3) such sidechains are listed below:

Mol	Chain	Res	Type
1	A	136	ASN

Continued on next page...

Continued from previous page...

Mol	Chain	Res	Type
1	A	620	GLN
1	A	651	GLN

5.3.3 RNA [i](#)

There are no RNA molecules in this entry.

5.4 Non-standard residues in protein, DNA, RNA chains [i](#)

There are no non-standard protein/DNA/RNA residues in this entry.

5.5 Carbohydrates [i](#)

11 monosaccharides are modelled in this entry.

In the following table, the Counts columns list the number of bonds (or angles) for which Mogul statistics could be retrieved, the number of bonds (or angles) that are observed in the model and the number of bonds (or angles) that are defined in the Chemical Component Dictionary. The Link column lists molecule types, if any, to which the group is linked. The Z score for a bond length (or angle) is the number of standard deviations the observed value is removed from the expected value. A bond length (or angle) with $|Z| > 2$ is considered an outlier worth inspection. RMSZ is the root-mean-square of all Z scores of the bond lengths (or angles).

Mol	Type	Chain	Res	Link	Bond lengths			Bond angles		
					Counts	RMSZ	# Z > 2	Counts	RMSZ	# Z > 2
2	NAG	B	1	2,1	14,14,15	0.50	0	17,19,21	1.02	1 (5%)
2	NAG	B	2	2	14,14,15	0.56	0	17,19,21	1.18	3 (17%)
2	NAG	C	1	2,1	14,14,15	0.78	0	17,19,21	0.96	0
2	NAG	C	2	2	14,14,15	0.35	0	17,19,21	1.07	0
3	NAG	D	1	3,1	14,14,15	0.78	0	17,19,21	1.48	2 (11%)
3	NAG	D	2	3	14,14,15	0.64	0	17,19,21	1.72	3 (17%)
3	BMA	D	3	3	11,11,12	0.29	0	15,15,17	0.95	0
4	NAG	E	1	4,1	14,14,15	0.73	0	17,19,21	1.59	2 (11%)
4	NAG	E	2	4	14,14,15	0.90	1 (7%)	17,19,21	1.40	3 (17%)
4	BMA	E	3	4	11,11,12	0.68	0	15,15,17	1.16	1 (6%)
4	MAN	E	4	4	11,11,12	0.91	1 (9%)	15,15,17	1.71	5 (33%)

In the following table, the Chirals column lists the number of chiral outliers, the number of chiral centers analysed, the number of these observed in the model and the number defined in the Chemical Component Dictionary. Similar counts are reported in the Torsion and Rings columns.

'-' means no outliers of that kind were identified.

Mol	Type	Chain	Res	Link	Chirals	Torsions	Rings
2	NAG	B	1	2,1	-	0/6/23/26	0/1/1/1
2	NAG	B	2	2	-	0/6/23/26	0/1/1/1
2	NAG	C	1	2,1	-	0/6/23/26	0/1/1/1
2	NAG	C	2	2	-	1/6/23/26	0/1/1/1
3	NAG	D	1	3,1	-	0/6/23/26	0/1/1/1
3	NAG	D	2	3	-	0/6/23/26	0/1/1/1
3	BMA	D	3	3	-	2/2/19/22	0/1/1/1
4	NAG	E	1	4,1	-	0/6/23/26	0/1/1/1
4	NAG	E	2	4	-	4/6/23/26	0/1/1/1
4	BMA	E	3	4	-	0/2/19/22	0/1/1/1
4	MAN	E	4	4	-	2/2/19/22	0/1/1/1

All (2) bond length outliers are listed below:

Mol	Chain	Res	Type	Atoms	Z	Observed(Å)	Ideal(Å)
4	E	2	NAG	O5-C1	-3.06	1.38	1.43
4	E	4	MAN	C2-C3	2.21	1.55	1.52

All (20) bond angle outliers are listed below:

Mol	Chain	Res	Type	Atoms	Z	Observed(°)	Ideal(°)
3	D	2	NAG	C2-N2-C7	-4.94	116.29	122.90
4	E	1	NAG	O5-C1-C2	-4.77	103.91	111.29
4	E	3	BMA	O3-C3-C2	-3.57	102.77	110.05
3	D	1	NAG	O5-C5-C4	-3.10	103.30	110.83
3	D	1	NAG	C8-C7-N2	3.02	121.13	116.12
4	E	4	MAN	C1-O5-C5	2.95	116.14	112.19
4	E	2	NAG	C8-C7-N2	2.95	121.01	116.12
4	E	4	MAN	O2-C2-C1	-2.92	102.54	109.22
4	E	2	NAG	C1-O5-C5	2.82	115.97	112.19
4	E	4	MAN	O2-C2-C3	2.82	115.98	110.15
3	D	2	NAG	C3-C4-C5	-2.69	105.35	110.23
2	B	1	NAG	O5-C1-C2	-2.63	107.22	111.29
4	E	1	NAG	C6-C5-C4	-2.53	106.82	113.02
2	B	2	NAG	C3-C4-C5	-2.51	105.67	110.23
2	B	2	NAG	O5-C1-C2	-2.47	107.46	111.29
4	E	4	MAN	C1-C2-C3	-2.45	106.07	109.64
4	E	4	MAN	O4-C4-C3	2.44	116.12	110.38
4	E	2	NAG	O7-C7-C8	-2.32	117.93	122.05
2	B	2	NAG	O5-C5-C4	-2.09	105.75	110.83
3	D	2	NAG	C1-O5-C5	-2.02	109.48	112.19

There are no chirality outliers.

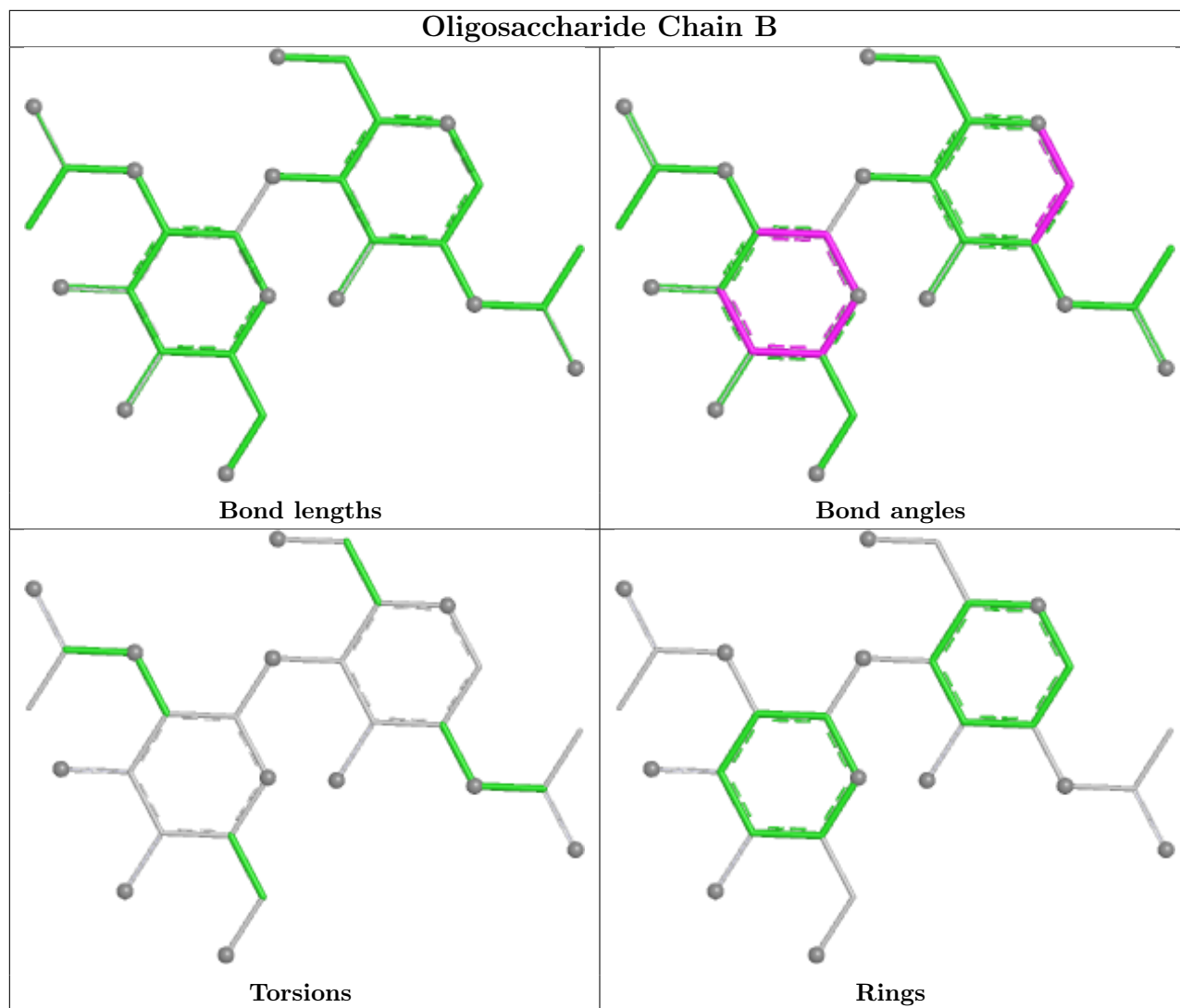
All (9) torsion outliers are listed below:

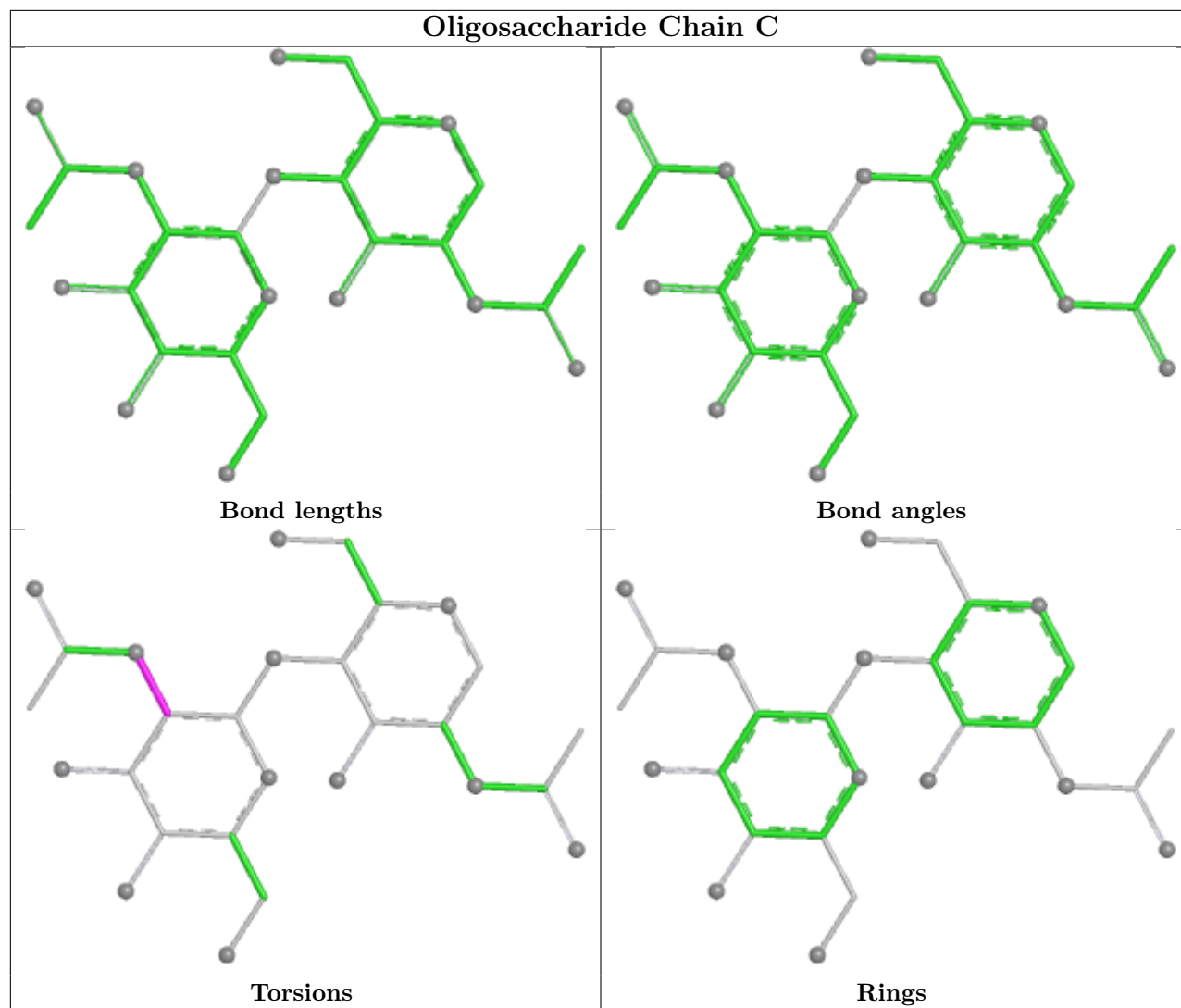
Mol	Chain	Res	Type	Atoms
3	D	3	BMA	O5-C5-C6-O6
3	D	3	BMA	C4-C5-C6-O6
4	E	4	MAN	C4-C5-C6-O6
4	E	4	MAN	O5-C5-C6-O6
4	E	2	NAG	C8-C7-N2-C2
4	E	2	NAG	O7-C7-N2-C2
4	E	2	NAG	O5-C5-C6-O6
4	E	2	NAG	C4-C5-C6-O6
2	C	2	NAG	C1-C2-N2-C7

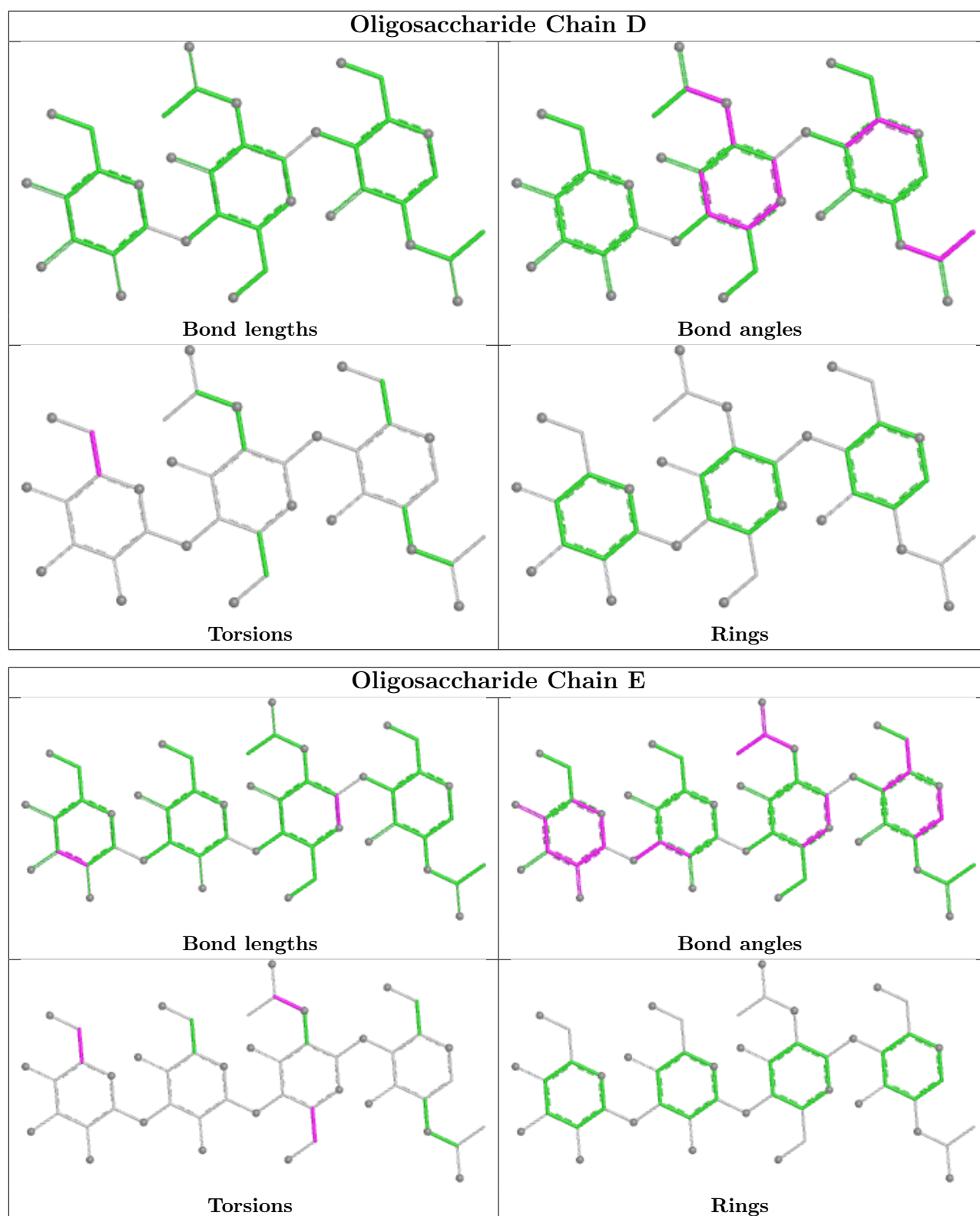
There are no ring outliers.

No monomer is involved in short contacts.

The following is a two-dimensional graphical depiction of Mogul quality analysis of bond lengths, bond angles, torsion angles, and ring geometry for oligosaccharide.







5.6 Ligand geometry [i](#)

Of 8 ligands modelled in this entry, 4 are monoatomic - leaving 4 for Mogul analysis.

In the following table, the Counts columns list the number of bonds (or angles) for which Mogul statistics could be retrieved, the number of bonds (or angles) that are observed in the model and the number of bonds (or angles) that are defined in the Chemical Component Dictionary. The Link column lists molecule types, if any, to which the group is linked. The Z score for a bond length (or angle) is the number of standard deviations the observed value is removed from the expected value. A bond length (or angle) with $|Z| > 2$ is considered an outlier worth inspection. RMSZ is the root-mean-square of all Z scores of the bond lengths (or angles).

Mol	Type	Chain	Res	Link	Bond lengths			Bond angles		
					Counts	RMSZ	# Z > 2	Counts	RMSZ	# Z > 2
9	J96	A	819	6	23,23,93	0.92	2 (8%)	27,28,110	1.59	6 (22%)
5	NAG	A	806	1	14,14,15	0.53	0	17,19,21	1.75	4 (23%)
5	NAG	A	807	1	14,14,15	0.75	0	17,19,21	1.91	4 (23%)
5	NAG	A	803	1	14,14,15	0.65	0	17,19,21	1.85	5 (29%)

In the following table, the Chirals column lists the number of chiral outliers, the number of chiral centers analysed, the number of these observed in the model and the number defined in the Chemical Component Dictionary. Similar counts are reported in the Torsion and Rings columns. '-' means no outliers of that kind were identified.

Mol	Type	Chain	Res	Link	Chirals	Torsions	Rings
9	J96	A	819	6	-	4/28/28/110	-
5	NAG	A	806	1	-	0/6/23/26	0/1/1/1
5	NAG	A	807	1	-	0/6/23/26	0/1/1/1
5	NAG	A	803	1	-	2/6/23/26	0/1/1/1

All (2) bond length outliers are listed below:

Mol	Chain	Res	Type	Atoms	Z	Observed(Å)	Ideal(Å)
9	A	819	J96	O-C	2.25	1.28	1.22
9	A	819	J96	O1-C	-2.02	1.24	1.30

All (19) bond angle outliers are listed below:

Mol	Chain	Res	Type	Atoms	Z	Observed(°)	Ideal(°)
5	A	807	NAG	C1-O5-C5	4.23	117.86	112.19
5	A	803	NAG	O5-C5-C6	4.05	115.54	107.66
5	A	806	NAG	C1-O5-C5	3.98	117.52	112.19
5	A	807	NAG	O5-C1-C2	-3.10	106.49	111.29
9	A	819	J96	C5-C4-C3	-3.04	107.55	113.16
5	A	803	NAG	C4-C3-C2	2.89	115.25	111.02
5	A	807	NAG	O3-C3-C4	-2.86	103.62	110.38
5	A	803	NAG	O3-C3-C2	-2.86	103.46	109.40

Continued on next page...

Continued from previous page...

Mol	Chain	Res	Type	Atoms	Z	Observed(°)	Ideal(°)
5	A	803	NAG	C1-C2-N2	-2.77	106.07	110.43
9	A	819	J96	C8-C1-N	-2.74	105.49	110.91
5	A	806	NAG	O5-C5-C6	2.73	112.98	107.66
9	A	819	J96	O2-C6-O3	-2.69	116.42	123.33
5	A	807	NAG	O7-C7-C8	-2.56	117.50	122.05
9	A	819	J96	O4-C7-O5	-2.49	118.42	124.08
5	A	806	NAG	C1-C2-N2	2.41	114.23	110.43
9	A	819	J96	O2-C6-C5	2.36	121.47	114.00
5	A	806	NAG	O3-C3-C2	-2.30	104.62	109.40
5	A	803	NAG	O3-C3-C4	-2.27	105.03	110.38
9	A	819	J96	C3-N1-C2	-2.03	115.97	120.64

There are no chirality outliers.

All (6) torsion outliers are listed below:

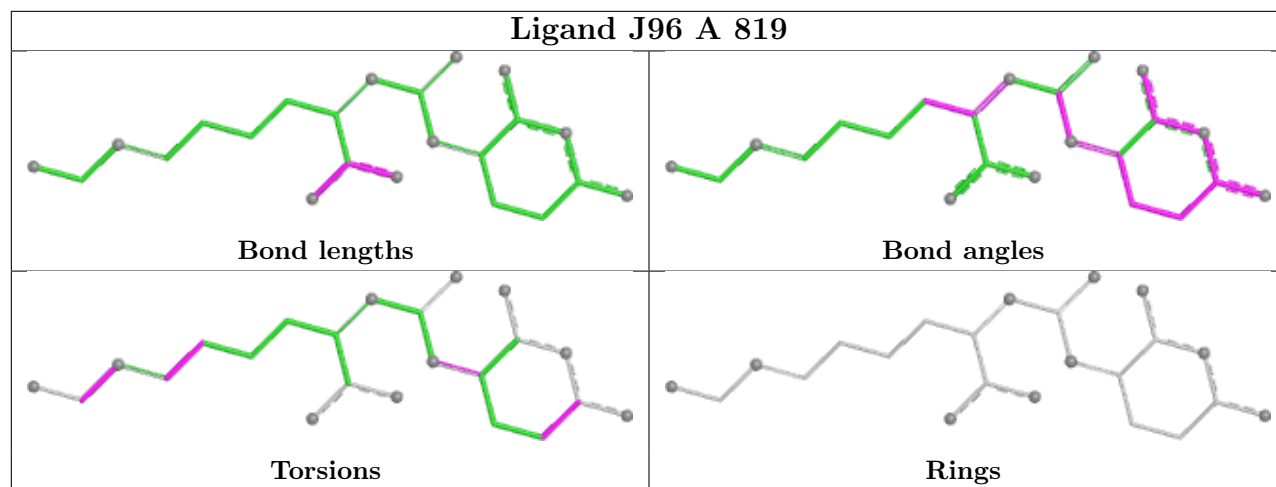
Mol	Chain	Res	Type	Atoms
9	A	819	J96	O23-C12-N2-C11
5	A	803	NAG	O5-C5-C6-O6
5	A	803	NAG	C4-C5-C6-O6
9	A	819	J96	C9-C10-C11-N2
9	A	819	J96	C7-C3-N1-C2
9	A	819	J96	C4-C5-C6-O2

There are no ring outliers.

1 monomer is involved in 1 short contact:

Mol	Chain	Res	Type	Clashes	Symm-Clashes
5	A	807	NAG	1	0

The following is a two-dimensional graphical depiction of Mogul quality analysis of bond lengths, bond angles, torsion angles, and ring geometry for all instances of the Ligand of Interest. In addition, ligands with molecular weight > 250 and outliers as shown on the validation Tables will also be included. For torsion angles, if less than 5% of the Mogul distribution of torsion angles is within 10 degrees of the torsion angle in question, then that torsion angle is considered an outlier. Any bond that is central to one or more torsion angles identified as an outlier by Mogul will be highlighted in the graph. For rings, the root-mean-square deviation (RMSD) between the ring in question and similar rings identified by Mogul is calculated over all ring torsion angles. If the average RMSD is greater than 60 degrees and the minimal RMSD between the ring in question and any Mogul-identified rings is also greater than 60 degrees, then that ring is considered an outlier. The outliers are highlighted in purple. The color gray indicates Mogul did not find sufficient equivalents in the CSD to analyse the geometry.



5.7 Other polymers [i](#)

There are no such residues in this entry.

5.8 Polymer linkage issues [i](#)

There are no chain breaks in this entry.

6 Fit of model and data

6.1 Protein, DNA and RNA chains

In the following table, the column labelled ‘#RSRZ> 2’ contains the number (and percentage) of RSRZ outliers, followed by percent RSRZ outliers for the chain as percentile scores relative to all X-ray entries and entries of similar resolution. The OWAB column contains the minimum, median, 95th percentile and maximum values of the occupancy-weighted average B-factor per residue. The column labelled ‘Q< 0.9’ lists the number of (and percentage) of residues with an average occupancy less than 0.9.

Mol	Chain	Analysed	<RSRZ>	#RSRZ>2	OWAB(Å ²)	Q<0.9
1	A	696/739 (94%)	-0.04	30 (4%) 40 44	9, 21, 41, 67	9 (1%)

All (30) RSRZ outliers are listed below:

Mol	Chain	Res	Type	RSRZ
1	A	541	TRP	8.8
1	A	546	PHE	4.6
1	A	506	PHE	3.6
1	A	152	GLU	3.4
1	A	656	SER	3.2
1	A	657	ASN	3.2
1	A	543	THR	3.1
1	A	654	ASP	2.9
1	A	544	ASN	2.9
1	A	279	TYR	2.9
1	A	545	LYS	2.8
1	A	335	GLY	2.7
1	A	659	ILE	2.6
1	A	155	SER	2.6
1	A	133	GLU	2.6
1	A	334	THR	2.5
1	A	655	LYS	2.5
1	A	548	GLY	2.4
1	A	652	ASP	2.4
1	A	507	SER	2.3
1	A	547	SER	2.3
1	A	504	PRO	2.2
1	A	658	PRO	2.2
1	A	122	LYS	2.1
1	A	651	GLN	2.1
1	A	136	ASN	2.1
1	A	505	GLU	2.1

Continued on next page...

Continued from previous page...

Mol	Chain	Res	Type	RSRZ
1	A	153	ASN	2.1
1	A	336	ASN	2.1
1	A	154	VAL	2.0

6.2 Non-standard residues in protein, DNA, RNA chains [i](#)

There are no non-standard protein/DNA/RNA residues in this entry.

6.3 Carbohydrates [i](#)

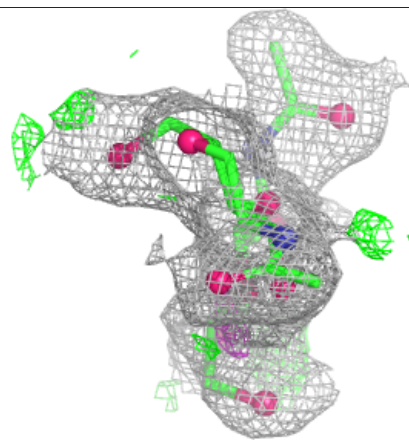
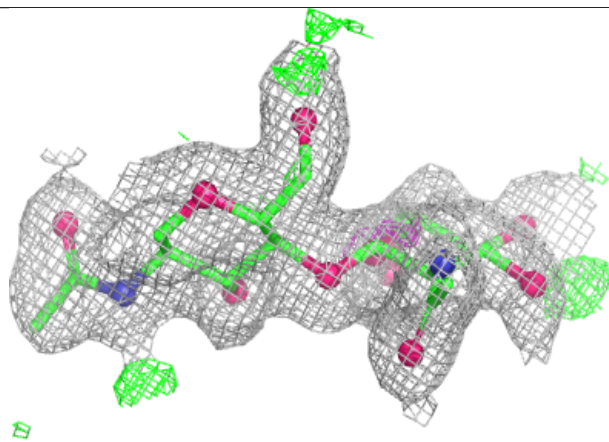
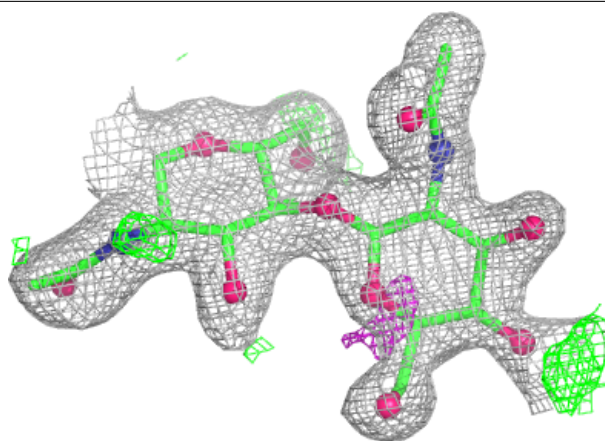
In the following table, the Atoms column lists the number of modelled atoms in the group and the number defined in the chemical component dictionary. The B-factors column lists the minimum, median, 95th percentile and maximum values of B factors of atoms in the group. The column labelled 'Q< 0.9' lists the number of atoms with occupancy less than 0.9.

Mol	Type	Chain	Res	Atoms	RSCC	RSR	B-factors(Å ²)	Q<0.9
4	MAN	E	4	11/12	0.62	0.23	47,54,59,62	0
3	BMA	D	3	11/12	0.63	0.18	53,58,67,69	0
2	NAG	B	2	14/15	0.79	0.14	33,42,50,60	0
2	NAG	C	2	14/15	0.84	0.12	46,50,61,68	0
4	BMA	E	3	11/12	0.87	0.11	34,36,40,41	0
4	NAG	E	2	14/15	0.89	0.12	32,35,45,55	0
2	NAG	C	1	14/15	0.90	0.10	31,36,41,47	0
3	NAG	D	2	14/15	0.91	0.10	31,39,50,50	0
4	NAG	E	1	14/15	0.92	0.10	19,25,34,46	0
3	NAG	D	1	14/15	0.93	0.08	25,27,30,37	0
2	NAG	B	1	14/15	0.94	0.09	26,35,41,45	0

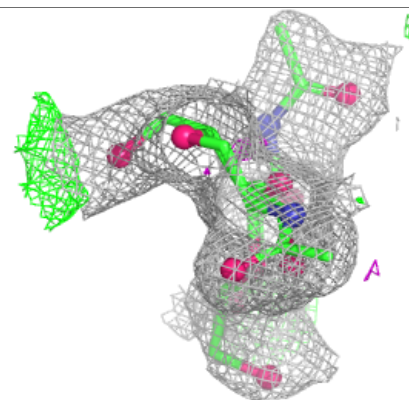
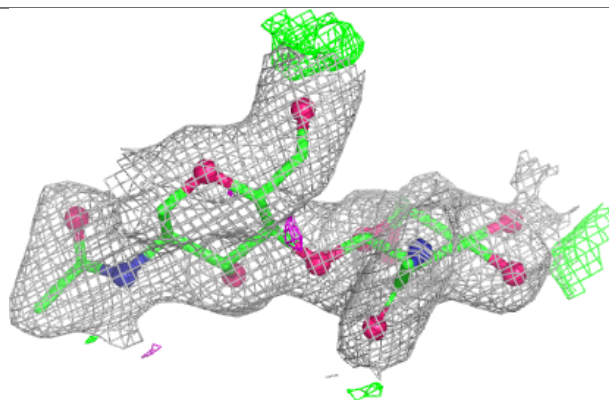
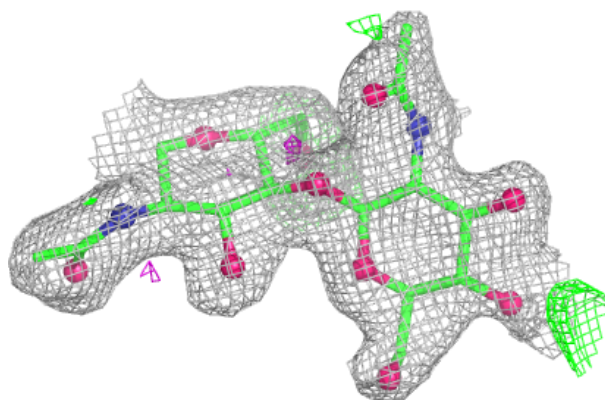
The following is a graphical depiction of the model fit to experimental electron density for oligosaccharide. Each fit is shown from different orientation to approximate a three-dimensional view.

Electron density around Chain B:

$2mF_o-DF_c$ (at 0.7 rmsd) in gray
 mF_o-DF_c (at 3 rmsd) in purple (negative)
and green (positive)

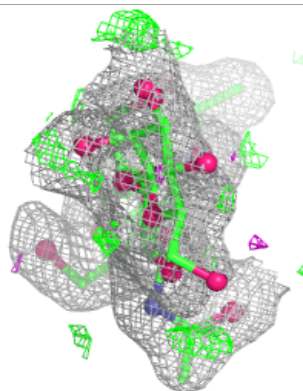
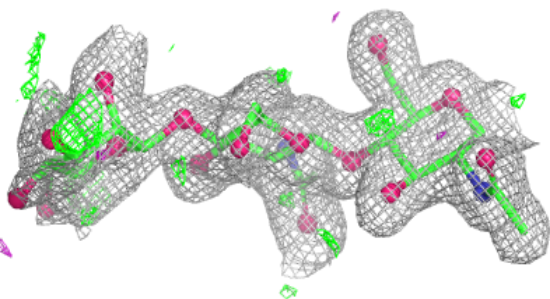
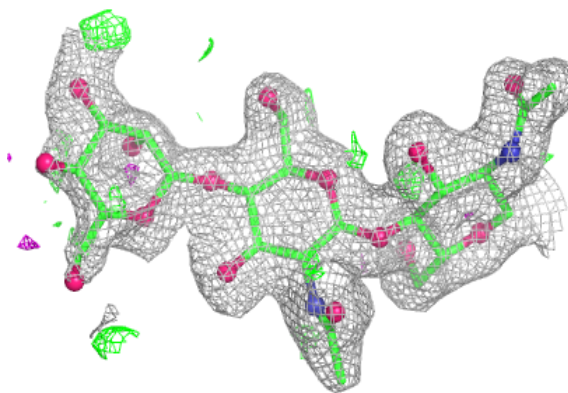
**Electron density around Chain C:**

$2mF_o-DF_c$ (at 0.7 rmsd) in gray
 mF_o-DF_c (at 3 rmsd) in purple (negative)
and green (positive)

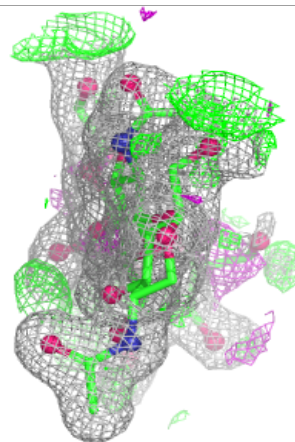
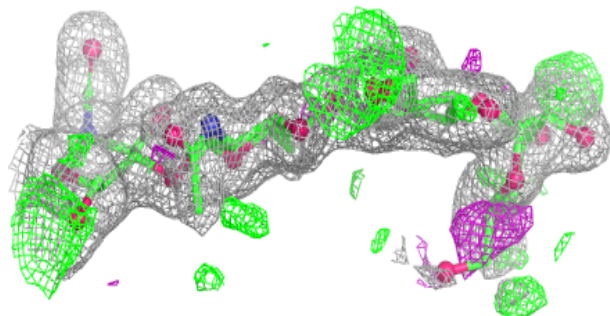
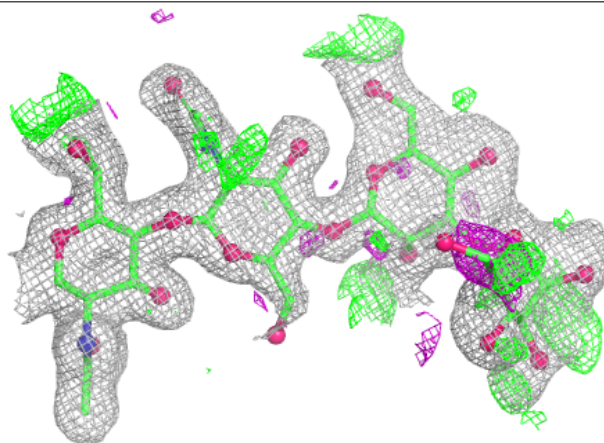


Electron density around Chain D:

$2mF_o-DF_c$ (at 0.7 rmsd) in gray
 mF_o-DF_c (at 3 rmsd) in purple (negative)
and green (positive)

**Electron density around Chain E:**

$2mF_o-DF_c$ (at 0.7 rmsd) in gray
 mF_o-DF_c (at 3 rmsd) in purple (negative)
and green (positive)

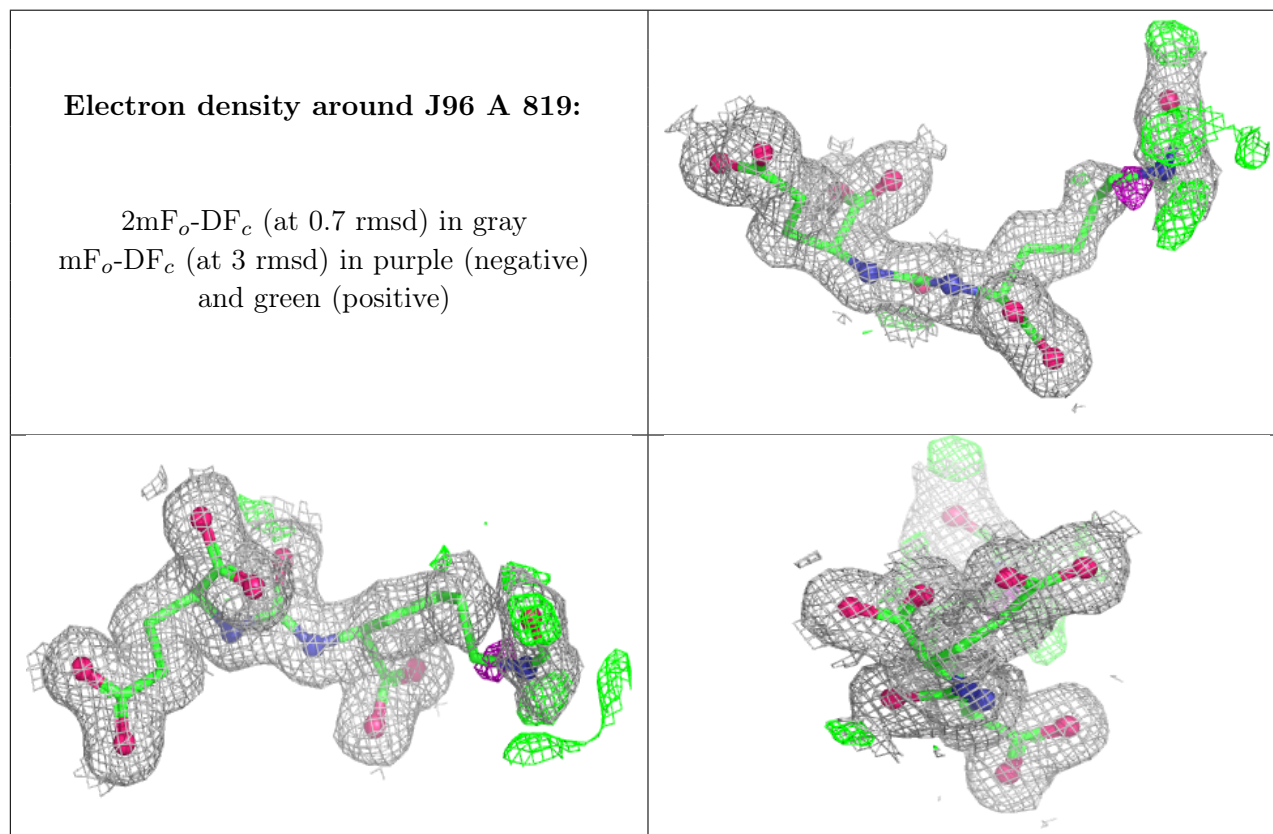


6.4 Ligands [i](#)

In the following table, the Atoms column lists the number of modelled atoms in the group and the number defined in the chemical component dictionary. The B-factors column lists the minimum, median, 95th percentile and maximum values of B factors of atoms in the group. The column labelled 'Q<0.9' lists the number of atoms with occupancy less than 0.9.

Mol	Type	Chain	Res	Atoms	RSCC	RSR	B-factors(Å ²)	Q<0.9
5	NAG	A	803	14/15	0.75	0.17	39,47,57,64	0
5	NAG	A	806	14/15	0.77	0.15	49,56,61,64	0
5	NAG	A	807	14/15	0.89	0.10	26,38,43,44	0
9	J96	A	819	24/91	0.97	0.07	13,16,51,55	0
7	CL	A	817	1/1	0.99	0.04	15,15,15,15	0
6	ZN	A	815	1/1	1.00	0.01	14,14,14,14	0
8	CA	A	818	1/1	1.00	0.01	13,13,13,13	0
6	ZN	A	816	1/1	1.00	0.01	15,15,15,15	0

The following is a graphical depiction of the model fit to experimental electron density of all instances of the Ligand of Interest. In addition, ligands with molecular weight > 250 and outliers as shown on the geometry validation Tables will also be included. Each fit is shown from different orientation to approximate a three-dimensional view.



6.5 Other polymers [i](#)

There are no such residues in this entry.