



# Full wwPDB X-ray Structure Validation Report ⓘ

Sep 11, 2023 – 09:55 AM EDT

PDB ID : 4MVW  
Title : Trypanosoma brucei methionyl-tRNA synthetase in complex with inhibitor 1-{3-[(3,5-dichlorobenzyl)amino]propyl}-3-thiophen-3-ylurea (Chem 1433)  
Authors : Koh, C.Y.; Kim, J.E.; Wetzel, A.B.; de van der Schueren, W.J.; Shibata, S.; Liu, J.; Zhang, Z.; Fan, E.; Verlinde, C.L.M.J.; Hol, W.G.J.  
Deposited on : 2013-09-24  
Resolution : 2.90 Å(reported)

This is a Full wwPDB X-ray Structure Validation Report for a publicly released PDB entry.

We welcome your comments at [validation@mail.wwpdb.org](mailto:validation@mail.wwpdb.org)

A user guide is available at

<https://www.wwpdb.org/validation/2017/XrayValidationReportHelp>

with specific help available everywhere you see the ⓘ symbol.

The types of validation reports are described at

<http://www.wwpdb.org/validation/2017/FAQs#types>.

---

The following versions of software and data (see [references ⓘ](#)) were used in the production of this report:

MolProbity : 4.02b-467  
Mogul : 1.8.5 (274361), CSD as541be (2020)  
Xtrriage (Phenix) : 1.13  
EDS : 2.35.1  
buster-report : 1.1.7 (2018)  
Percentile statistics : 20191225.v01 (using entries in the PDB archive December 25th 2019)  
Refmac : 5.8.0158  
CCP4 : 7.0.044 (Gargrove)  
Ideal geometry (proteins) : Engh & Huber (2001)  
Ideal geometry (DNA, RNA) : Parkinson et al. (1996)  
Validation Pipeline (wwPDB-VP) : 2.35.1

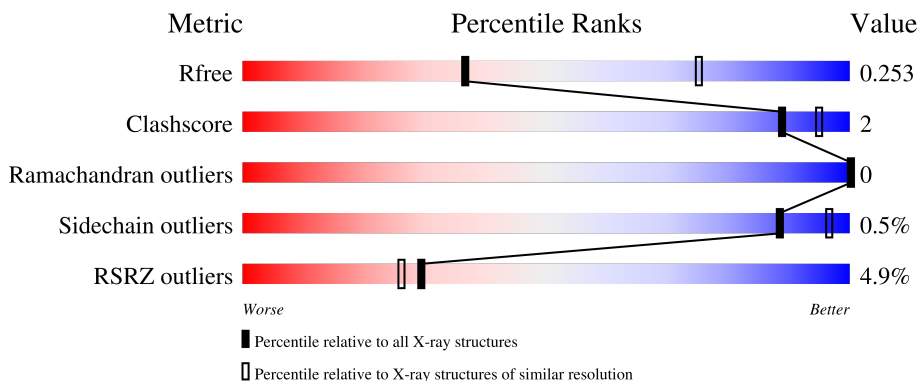
# 1 Overall quality at a glance

The following experimental techniques were used to determine the structure:

*X-RAY DIFFRACTION*

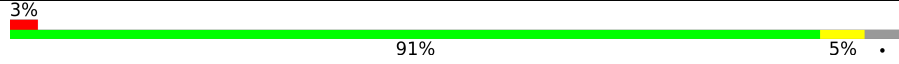
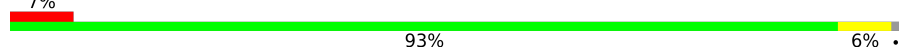
The reported resolution of this entry is 2.90 Å.

Percentile scores (ranging between 0-100) for global validation metrics of the entry are shown in the following graphic. The table shows the number of entries on which the scores are based.



Metric	Whole archive (#Entries)	Similar resolution (#Entries, resolution range(Å))
$R_{free}$	130704	1957 (2.90-2.90)
Clashscore	141614	2172 (2.90-2.90)
Ramachandran outliers	138981	2115 (2.90-2.90)
Sidechain outliers	138945	2117 (2.90-2.90)
RSRZ outliers	127900	1906 (2.90-2.90)

The table below summarises the geometric issues observed across the polymeric chains and their fit to the electron density. The red, orange, yellow and green segments of the lower bar indicate the fraction of residues that contain outliers for  $\geq 3$ , 2, 1 and 0 types of geometric quality criteria respectively. A grey segment represents the fraction of residues that are not modelled. The numeric value for each fraction is indicated below the corresponding segment, with a dot representing fractions  $\leq 5\%$ . The upper red bar (where present) indicates the fraction of residues that have poor fit to the electron density. The numeric value is given above the bar.

Mol	Chain	Length	Quality of chain
1	A	542	 3% 91% 5% .
1	B	542	 7% 93% 6% .

## 2 Entry composition

There are 7 unique types of molecules in this entry. The entry contains 8875 atoms, of which 0 are hydrogens and 0 are deuteriums.

In the tables below, the ZeroOcc column contains the number of atoms modelled with zero occupancy, the AltConf column contains the number of residues with at least one atom in alternate conformation and the Trace column contains the number of residues modelled with at most 2 atoms.

- Molecule 1 is a protein called Methionyl-tRNA synthetase.

Mol	Chain	Residues	Atoms						ZeroOcc	AltConf	Trace
			Total	As	C	N	O	S			
1	A	523	4198	2	2705	708	772	11	0	0	0
1	B	536	4311	2	2775	728	794	12	0	2	0

There are 22 discrepancies between the modelled and reference sequences:

Chain	Residue	Modelled	Actual	Comment	Reference
A	-4	GLY	-	expression tag	UNP Q38C91
A	-3	PRO	-	expression tag	UNP Q38C91
A	-2	GLY	-	expression tag	UNP Q38C91
A	-1	SER	-	expression tag	UNP Q38C91
A	0	MET	-	expression tag	UNP Q38C91
A	309	THR	ALA	conflict	UNP Q38C91
A	452	ALA	LYS	engineered mutation	UNP Q38C91
A	453	ARG	LYS	engineered mutation	UNP Q38C91
A	454	ALA	GLU	engineered mutation	UNP Q38C91
A	499	VAL	ALA	conflict	UNP Q38C91
A	503	ASN	SER	conflict	UNP Q38C91
B	-4	GLY	-	expression tag	UNP Q38C91
B	-3	PRO	-	expression tag	UNP Q38C91
B	-2	GLY	-	expression tag	UNP Q38C91
B	-1	SER	-	expression tag	UNP Q38C91
B	0	MET	-	expression tag	UNP Q38C91
B	309	THR	ALA	conflict	UNP Q38C91
B	452	ALA	LYS	engineered mutation	UNP Q38C91
B	453	ARG	LYS	engineered mutation	UNP Q38C91
B	454	ALA	GLU	engineered mutation	UNP Q38C91
B	499	VAL	ALA	conflict	UNP Q38C91
B	503	ASN	SER	conflict	UNP Q38C91

- Molecule 2 is GLYCEROL (three-letter code: GOL) (formula: C<sub>3</sub>H<sub>8</sub>O<sub>3</sub>).



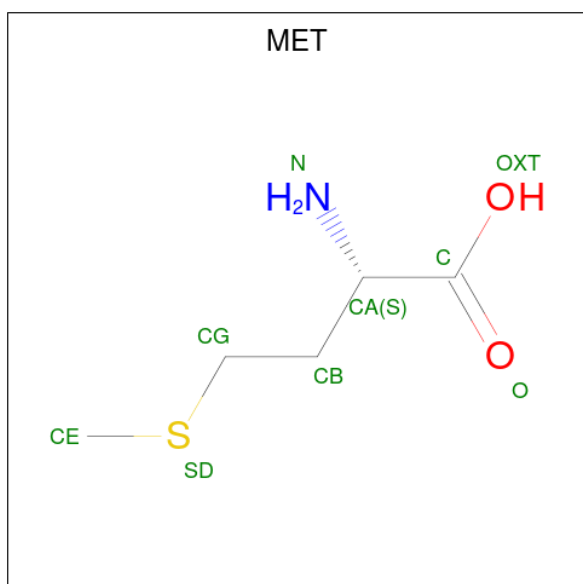
Mol	Chain	Residues	Atoms	ZeroOcc	AltConf
2	A	1	Total C O 6 3 3	0	0
2	A	1	Total C O 6 3 3	0	0
2	A	1	Total C O 6 3 3	0	0
2	A	1	Total C O 6 3 3	0	0
2	B	1	Total C O 6 3 3	0	0
2	B	1	Total C O 6 3 3	0	0
2	B	1	Total C O 6 3 3	0	0

- Molecule 3 is DIMETHYL SULFOXIDE (three-letter code: DMS) (formula: C<sub>2</sub>H<sub>6</sub>OS).



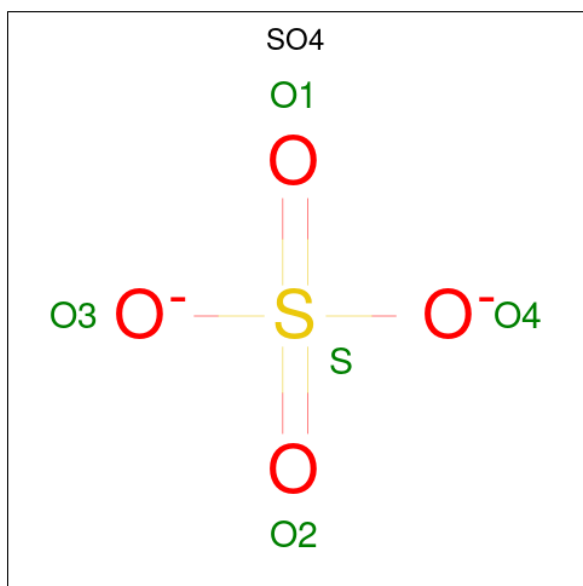
Mol	Chain	Residues	Atoms				ZeroOcc	AltConf
3	A	1	Total	C	O	S	0	0
			4	2	1	1		
3	A	1	Total	C	O	S	0	0
			4	2	1	1		
3	A	1	Total	C	O	S	0	0
			4	2	1	1		
3	B	1	Total	C	O	S	0	0
			4	2	1	1		
3	B	1	Total	C	O	S	0	0
			4	2	1	1		

- Molecule 4 is METHIONINE (three-letter code: MET) (formula: C<sub>5</sub>H<sub>11</sub>NO<sub>2</sub>S).



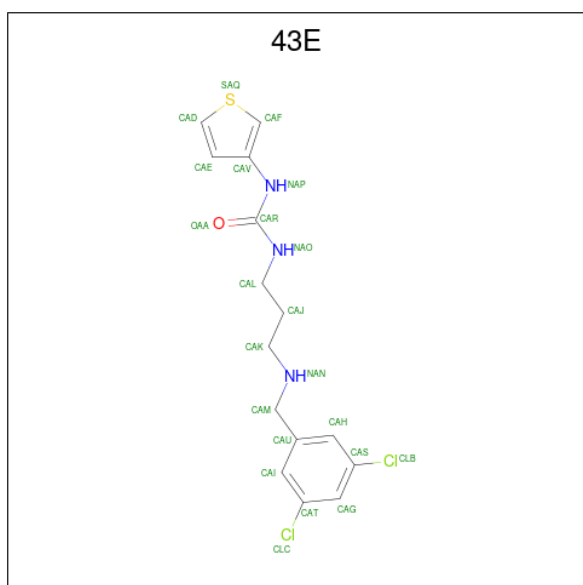
Mol	Chain	Residues	Atoms					ZeroOcc	AltConf
			Total	C	N	O	S		
4	A	1	9	5	1	2	1	0	0

- Molecule 5 is SULFATE ION (three-letter code: SO4) (formula: O<sub>4</sub>S).



Mol	Chain	Residues	Atoms			ZeroOcc	AltConf
			Total	O	S		
5	B	1	5	4	1	0	0

- Molecule 6 is 1-{3-[(3,5-dichlorobenzyl)amino]propyl}-3-thiophen-3-ylurea (three-letter code: 43E) (formula: C<sub>15</sub>H<sub>17</sub>Cl<sub>2</sub>N<sub>3</sub>OS).



Mol	Chain	Residues	Atoms					ZeroOcc	AltConf	
			Total	C	Cl	N	O			S
6	B	1	22	15	2	3	1	1	0	0

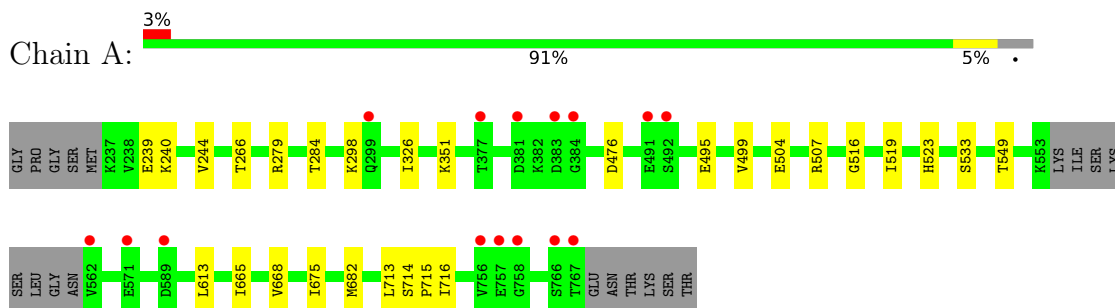
- Molecule 7 is water.

Mol	Chain	Residues	Atoms		ZeroOcc	AltConf
7	A	137	Total 137	O 137	0	0
7	B	131	Total 131	O 131	0	0

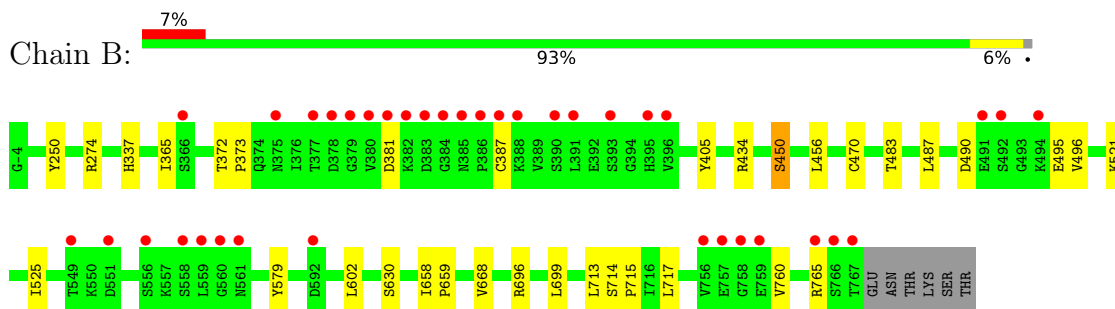
### 3 Residue-property plots [i](#)

These plots are drawn for all protein, RNA, DNA and oligosaccharide chains in the entry. The first graphic for a chain summarises the proportions of the various outlier classes displayed in the second graphic. The second graphic shows the sequence view annotated by issues in geometry and electron density. Residues are color-coded according to the number of geometric quality criteria for which they contain at least one outlier: green = 0, yellow = 1, orange = 2 and red = 3 or more. A red dot above a residue indicates a poor fit to the electron density ( $RSRZ > 2$ ). Stretches of 2 or more consecutive residues without any outlier are shown as a green connector. Residues present in the sample, but not in the model, are shown in grey.

- Molecule 1: Methionyl-tRNA synthetase



- Molecule 1: Methionyl-tRNA synthetase





## 4 Data and refinement statistics

Property	Value	Source
Space group	P 21 21 21	Depositor
Cell constants a, b, c, $\alpha$ , $\beta$ , $\gamma$	88.07Å 105.86Å 206.97Å 90.00° 90.00° 90.00°	Depositor
Resolution (Å)	30.00 – 2.90 41.55 – 2.90	Depositor EDS
% Data completeness (in resolution range)	99.3 (30.00-2.90) 99.3 (41.55-2.90)	Depositor EDS
$R_{merge}$	0.20	Depositor
$R_{sym}$	0.20	Depositor
$\langle I/\sigma(I) \rangle$ <sup>1</sup>	2.56 (at 2.90Å)	Xtrriage
Refinement program	REFMAC refmac_5.7.0032	Depositor
R, $R_{free}$	0.193 , 0.249 0.194 , 0.253	Depositor DCC
$R_{free}$ test set	2191 reflections (5.03%)	wwPDB-VP
Wilson B-factor (Å <sup>2</sup> )	42.1	Xtrriage
Anisotropy	0.458	Xtrriage
Bulk solvent $k_{sol}$ (e/Å <sup>3</sup> ), $B_{sol}$ (Å <sup>2</sup> )	0.33 , 38.6	EDS
L-test for twinning <sup>2</sup>	$\langle  L  \rangle = 0.51$ , $\langle L^2 \rangle = 0.34$	Xtrriage
Estimated twinning fraction	No twinning to report.	Xtrriage
$F_o, F_c$ correlation	0.93	EDS
Total number of atoms	8875	wwPDB-VP
Average B, all atoms (Å <sup>2</sup> )	43.0	wwPDB-VP

Xtrriage's analysis on translational NCS is as follows: *The largest off-origin peak in the Patterson function is 3.18% of the height of the origin peak. No significant pseudotranslation is detected.*

<sup>1</sup>Intensities estimated from amplitudes.

<sup>2</sup>Theoretical values of  $\langle |L| \rangle$ ,  $\langle L^2 \rangle$  for acentric reflections are 0.5, 0.333 respectively for untwinned datasets, and 0.375, 0.2 for perfectly twinned datasets.

## 5 Model quality [i](#)

### 5.1 Standard geometry [i](#)

Bond lengths and bond angles in the following residue types are not validated in this section: CAS, DMS, 43E, GOL, SO4

The Z score for a bond length (or angle) is the number of standard deviations the observed value is removed from the expected value. A bond length (or angle) with  $|Z| > 5$  is considered an outlier worth inspection. RMSZ is the root-mean-square of all Z scores of the bond lengths (or angles).

Mol	Chain	Bond lengths		Bond angles	
		RMSZ	# Z  >5	RMSZ	# Z  >5
1	A	0.35	0/4287	0.55	0/5824
1	B	0.34	0/4404	0.53	0/5981
All	All	0.34	0/8691	0.54	0/11805

There are no bond length outliers.

There are no bond angle outliers.

There are no chirality outliers.

There are no planarity outliers.

### 5.2 Too-close contacts [i](#)

In the following table, the Non-H and H(model) columns list the number of non-hydrogen atoms and hydrogen atoms in the chain respectively. The H(added) column lists the number of hydrogen atoms added and optimized by MolProbity. The Clashes column lists the number of clashes within the asymmetric unit, whereas Symm-Clashes lists symmetry-related clashes.

Mol	Chain	Non-H	H(model)	H(added)	Clashes	Symm-Clashes
1	A	4198	0	4144	15	0
1	B	4311	0	4260	18	0
2	A	24	0	32	0	0
2	B	18	0	24	0	0
3	A	12	0	18	0	0
3	B	8	0	12	0	0
4	A	9	0	8	0	0
5	B	5	0	0	0	0
6	B	22	0	17	0	0
7	A	137	0	0	0	0
7	B	131	0	0	1	0
All	All	8875	0	8515	32	0

The all-atom clashscore is defined as the number of clashes found per 1000 atoms (including hydrogen atoms). The all-atom clashscore for this structure is 2.

All (32) close contacts within the same asymmetric unit are listed below, sorted by their clash magnitude.

Atom-1	Atom-2	Interatomic distance (Å)	Clash overlap (Å)
1:A:668:VAL:HG11	1:A:713:LEU:HG	1.80	0.63
1:B:668:VAL:HG11	1:B:713:LEU:HG	1.83	0.60
1:B:337:HIS:HA	1:B:483:THR:HG21	1.88	0.55
1:B:579:TYR:HB2	1:B:717:LEU:HD21	1.88	0.54
1:A:499:VAL:HG11	1:A:504:GLU:HB3	1.89	0.54
1:B:274:ARG:NH2	7:B:972:HOH:O	2.42	0.53
1:A:682:MET:O	1:B:434:ARG:NH2	2.36	0.53
1:B:456:LEU:HD12	1:B:470:CAS:HB3	1.90	0.53
1:B:405:TYR:HB2	1:B:450:SER:HB3	1.90	0.52
1:B:487:LEU:HD22	1:B:495:GLU:HG3	1.91	0.52
1:A:519:ILE:HD12	1:A:523:HIS:CE1	2.46	0.49
1:A:284:THR:HG22	1:A:326:ILE:HG21	1.93	0.49
1:A:244:VAL:HG22	1:A:266:THR:HG23	1.97	0.46
1:B:521:LYS:HG3	1:B:525:ILE:HD12	1.98	0.46
1:A:240:LYS:NZ	1:A:507:ARG:O	2.48	0.46
1:A:519:ILE:HD12	1:A:523:HIS:HE1	1.80	0.46
1:A:613:LEU:HD11	1:A:675:ILE:HG22	1.98	0.46
1:B:714:SER:N	1:B:715:PRO:CD	2.80	0.45
1:A:516:GLY:HA3	1:A:549:THR:HG23	1.99	0.45
1:B:490:ASP:HB3	1:B:496:VAL:HG21	1.98	0.44
1:A:476:ASP:OD1	1:A:476:ASP:C	2.54	0.44
1:B:602:LEU:HD21	1:B:765:ARG:NH1	2.33	0.44
1:B:372:THR:HB	1:B:373:PRO:HD2	1.99	0.44
1:B:381:ASP:HB2	1:B:387:CYS:SG	2.58	0.44
1:A:351:LYS:HG3	1:A:533:SER:O	2.19	0.43
1:A:714:SER:N	1:A:715:PRO:CD	2.82	0.43
1:B:630:SER:O	1:B:696:ARG:NH1	2.47	0.42
1:A:239:GLU:OE1	1:A:279:ARG:NH1	2.39	0.42
1:B:699:LEU:HD23	1:B:699:LEU:HA	1.95	0.42
1:B:658:ILE:N	1:B:659:PRO:HA	2.35	0.42
1:B:365:ILE:HD12	1:B:365:ILE:H	1.86	0.41
1:A:665:ILE:HD11	1:A:716:ILE:HG12	2.03	0.40

There are no symmetry-related clashes.

## 5.3 Torsion angles [i](#)

### 5.3.1 Protein backbone [i](#)

In the following table, the Percentiles column shows the percent Ramachandran outliers of the chain as a percentile score with respect to all X-ray entries followed by that with respect to entries of similar resolution.

The Analysed column shows the number of residues for which the backbone conformation was analysed, and the total number of residues.

Mol	Chain	Analysed	Favoured	Allowed	Outliers	Percentiles	
1	A	517/542 (95%)	504 (98%)	13 (2%)	0	100	100
1	B	534/542 (98%)	515 (96%)	19 (4%)	0	100	100
All	All	1051/1084 (97%)	1019 (97%)	32 (3%)	0	100	100

There are no Ramachandran outliers to report.

### 5.3.2 Protein sidechains [i](#)

In the following table, the Percentiles column shows the percent sidechain outliers of the chain as a percentile score with respect to all X-ray entries followed by that with respect to entries of similar resolution.

The Analysed column shows the number of residues for which the sidechain conformation was analysed, and the total number of residues.

Mol	Chain	Analysed	Rotameric	Outliers	Percentiles	
1	A	450/467 (96%)	448 (100%)	2 (0%)	91	97
1	B	463/467 (99%)	460 (99%)	3 (1%)	86	96
All	All	913/934 (98%)	908 (100%)	5 (0%)	88	96

All (5) residues with a non-rotameric sidechain are listed below:

Mol	Chain	Res	Type
1	A	298	LYS
1	A	495	GLU
1	B	250	TYR
1	B	450	SER
1	B	760	VAL

Sometimes sidechains can be flipped to improve hydrogen bonding and reduce clashes. There are no such sidechains identified.

### 5.3.3 RNA [i](#)

There are no RNA molecules in this entry.

## 5.4 Non-standard residues in protein, DNA, RNA chains [i](#)

4 non-standard protein/DNA/RNA residues are modelled in this entry.

In the following table, the Counts columns list the number of bonds (or angles) for which Mogul statistics could be retrieved, the number of bonds (or angles) that are observed in the model and the number of bonds (or angles) that are defined in the Chemical Component Dictionary. The Link column lists molecule types, if any, to which the group is linked. The Z score for a bond length (or angle) is the number of standard deviations the observed value is removed from the expected value. A bond length (or angle) with  $|Z| > 2$  is considered an outlier worth inspection. RMSZ is the root-mean-square of all Z scores of the bond lengths (or angles).

Mol	Type	Chain	Res	Link	Bond lengths			Bond angles		
					Counts	RMSZ	# Z  > 2	Counts	RMSZ	# Z  > 2
1	CAS	A	470	1	5,8,9	0.99	0	1,9,11	0.36	0
1	CAS	A	318	1	5,8,9	1.07	0	1,9,11	0.28	0
1	CAS	B	470	1	5,8,9	1.03	0	1,9,11	0.14	0
1	CAS	B	318	1	5,8,9	0.91	0	1,9,11	0.61	0

In the following table, the Chirals column lists the number of chiral outliers, the number of chiral centers analysed, the number of these observed in the model and the number defined in the Chemical Component Dictionary. Similar counts are reported in the Torsion and Rings columns. '-' means no outliers of that kind were identified.

Mol	Type	Chain	Res	Link	Chirals	Torsions	Rings
1	CAS	A	470	1	-	0/0/7/9	-
1	CAS	A	318	1	-	0/0/7/9	-
1	CAS	B	470	1	-	0/0/7/9	-
1	CAS	B	318	1	-	0/0/7/9	-

There are no bond length outliers.

There are no bond angle outliers.

There are no chirality outliers.

There are no torsion outliers.

There are no ring outliers.

1 monomer is involved in 1 short contact:

Mol	Chain	Res	Type	Clashes	Symm-Clashes
1	B	470	CAS	1	0

## 5.5 Carbohydrates [i](#)

There are no monosaccharides in this entry.

## 5.6 Ligand geometry [i](#)

15 ligands are modelled in this entry.

In the following table, the Counts columns list the number of bonds (or angles) for which Mogul statistics could be retrieved, the number of bonds (or angles) that are observed in the model and the number of bonds (or angles) that are defined in the Chemical Component Dictionary. The Link column lists molecule types, if any, to which the group is linked. The Z score for a bond length (or angle) is the number of standard deviations the observed value is removed from the expected value. A bond length (or angle) with  $|Z| > 2$  is considered an outlier worth inspection. RMSZ is the root-mean-square of all Z scores of the bond lengths (or angles).

Mol	Type	Chain	Res	Link	Bond lengths			Bond angles		
					Counts	RMSZ	$\# Z  > 2$	Counts	RMSZ	$\# Z  > 2$
2	GOL	B	803	-	5,5,5	0.18	0	5,5,5	0.58	0
2	GOL	A	803	-	5,5,5	0.35	0	5,5,5	0.16	0
3	DMS	A	807	-	3,3,3	0.47	0	3,3,3	0.73	0
4	MET	A	808	-	7,8,8	0.90	1 (14%)	7,9,9	1.20	1 (14%)
3	DMS	A	806	-	3,3,3	0.51	0	3,3,3	0.62	0
2	GOL	A	804	-	5,5,5	0.51	0	5,5,5	0.33	0
3	DMS	A	805	-	3,3,3	0.50	0	3,3,3	0.53	0
5	SO4	B	806	-	4,4,4	0.30	0	6,6,6	0.34	0
6	43E	B	807	-	22,23,23	0.99	1 (4%)	23,29,29	0.35	0
2	GOL	A	802	-	5,5,5	0.41	0	5,5,5	0.41	0
2	GOL	B	804	-	5,5,5	0.27	0	5,5,5	0.35	0
3	DMS	B	801	-	3,3,3	0.50	0	3,3,3	0.50	0
2	GOL	B	802	-	5,5,5	0.38	0	5,5,5	0.47	0
2	GOL	A	801	-	5,5,5	0.40	0	5,5,5	0.54	0
3	DMS	B	805	-	3,3,3	0.51	0	3,3,3	0.60	0

In the following table, the Chirals column lists the number of chiral outliers, the number of chiral centers analysed, the number of these observed in the model and the number defined in the Chemical Component Dictionary. Similar counts are reported in the Torsion and Rings columns. '-' means no outliers of that kind were identified.

Mol	Type	Chain	Res	Link	Chirals	Torsions	Rings
2	GOL	B	803	-	-	0/4/4/4	-
2	GOL	A	803	-	-	4/4/4/4	-
4	MET	A	808	-	-	0/8/8/8	-
2	GOL	A	804	-	-	4/4/4/4	-
6	43E	B	807	-	-	3/11/13/13	0/2/2/2
2	GOL	A	802	-	-	0/4/4/4	-
2	GOL	B	804	-	-	0/4/4/4	-
2	GOL	B	802	-	-	0/4/4/4	-
2	GOL	A	801	-	-	2/4/4/4	-

All (2) bond length outliers are listed below:

Mol	Chain	Res	Type	Atoms	Z	Observed(Å)	Ideal(Å)
6	B	807	43E	CAE-CAV	4.32	1.43	1.39
4	A	808	MET	OXT-C	-2.31	1.23	1.30

All (1) bond angle outliers are listed below:

Mol	Chain	Res	Type	Atoms	Z	Observed(°)	Ideal(°)
4	A	808	MET	OXT-C-O	-2.41	118.63	124.09

There are no chirality outliers.

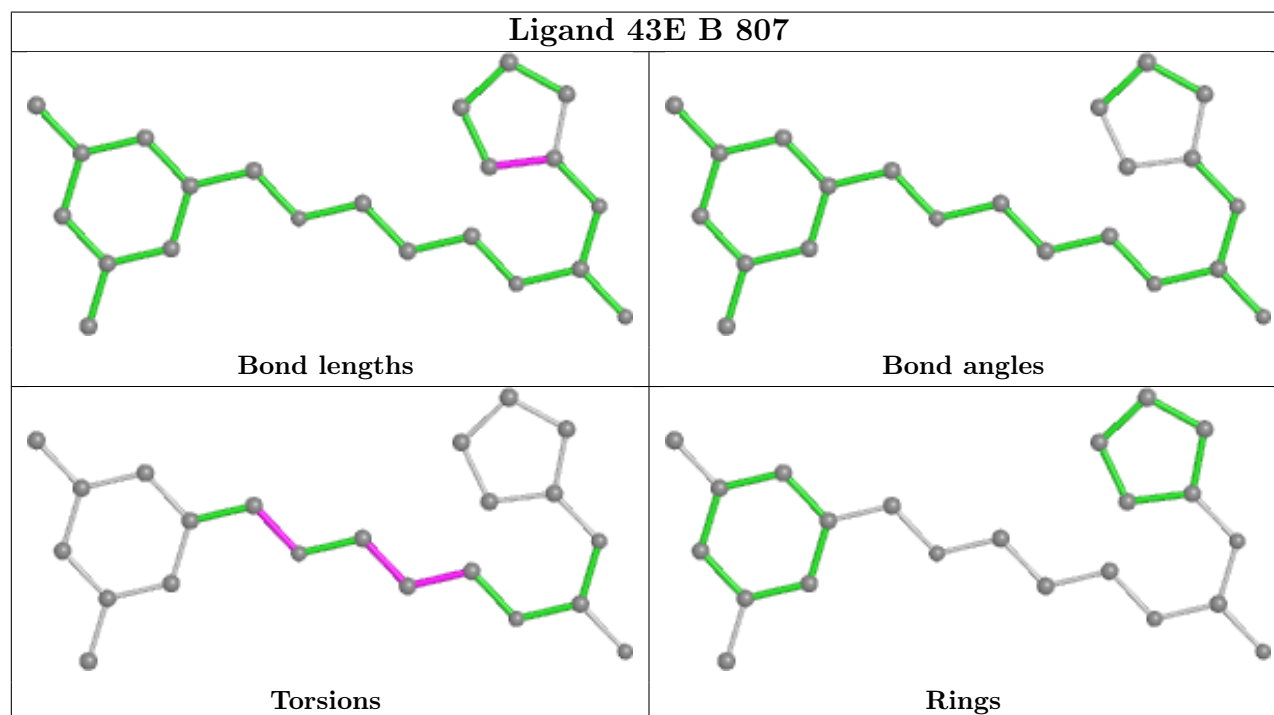
All (13) torsion outliers are listed below:

Mol	Chain	Res	Type	Atoms
2	A	801	GOL	C1-C2-C3-O3
2	A	804	GOL	O1-C1-C2-C3
2	A	804	GOL	C1-C2-C3-O3
6	B	807	43E	CAL-CAJ-CAK-NAN
6	B	807	43E	CAK-CAJ-CAL-NAO
6	B	807	43E	CAU-CAM-NAN-CAK
2	A	803	GOL	C1-C2-C3-O3
2	A	801	GOL	O2-C2-C3-O3
2	A	804	GOL	O2-C2-C3-O3
2	A	803	GOL	O2-C2-C3-O3
2	A	803	GOL	O1-C1-C2-O2
2	A	804	GOL	O1-C1-C2-O2
2	A	803	GOL	O1-C1-C2-C3

There are no ring outliers.

No monomer is involved in short contacts.

The following is a two-dimensional graphical depiction of Mogul quality analysis of bond lengths, bond angles, torsion angles, and ring geometry for all instances of the Ligand of Interest. In addition, ligands with molecular weight > 250 and outliers as shown on the validation Tables will also be included. For torsion angles, if less than 5% of the Mogul distribution of torsion angles is within 10 degrees of the torsion angle in question, then that torsion angle is considered an outlier. Any bond that is central to one or more torsion angles identified as an outlier by Mogul will be highlighted in the graph. For rings, the root-mean-square deviation (RMSD) between the ring in question and similar rings identified by Mogul is calculated over all ring torsion angles. If the average RMSD is greater than 60 degrees and the minimal RMSD between the ring in question and any Mogul-identified rings is also greater than 60 degrees, then that ring is considered an outlier. The outliers are highlighted in purple. The color gray indicates Mogul did not find sufficient equivalents in the CSD to analyse the geometry.



## 5.7 Other polymers [i](#)

There are no such residues in this entry.

## 5.8 Polymer linkage issues [i](#)

There are no chain breaks in this entry.



## 6 Fit of model and data

### 6.1 Protein, DNA and RNA chains

In the following table, the column labelled ‘#RSRZ > 2’ contains the number (and percentage) of RSRZ outliers, followed by percent RSRZ outliers for the chain as percentile scores relative to all X-ray entries and entries of similar resolution. The OWAB column contains the minimum, median, 95<sup>th</sup> percentile and maximum values of the occupancy-weighted average B-factor per residue. The column labelled ‘Q < 0.9’ lists the number of (and percentage) of residues with an average occupancy less than 0.9.

Mol	Chain	Analysed	<RSRZ>	#RSRZ>2	OWAB(Å <sup>2</sup> )	Q<0.9
1	A	521/542 (96%)	-0.20	15 (2%) 51 47	24, 37, 77, 161	0
1	B	534/542 (98%)	-0.03	37 (6%) 16 13	24, 38, 96, 148	0
All	All	1055/1084 (97%)	-0.11	52 (4%) 29 26	24, 37, 87, 161	0

All (52) RSRZ outliers are listed below:

Mol	Chain	Res	Type	RSRZ
1	B	559	LEU	5.8
1	B	377	THR	5.4
1	B	383	ASP	5.1
1	A	757	GLU	5.1
1	B	385	ASN	4.9
1	B	384	GLY	4.6
1	A	756	VAL	4.5
1	B	756	VAL	4.4
1	B	381	ASP	4.4
1	B	758	GLY	4.3
1	B	387	CYS	4.3
1	B	380	VAL	4.3
1	A	562	VAL	4.2
1	B	386	PRO	4.2
1	B	491	GLU	4.2
1	B	560	GLY	4.2
1	B	382	LYS	4.2
1	A	383	ASP	4.0
1	B	558	SER	3.9
1	A	758	GLY	3.8
1	A	767	THR	3.7
1	B	556	SER	3.4
1	B	561	ASN	3.3
1	A	299	GLN	3.3

*Continued on next page...*

*Continued from previous page...*

Mol	Chain	Res	Type	RSRZ
1	A	492	SER	3.1
1	B	378	ASP	3.1
1	A	766	SER	3.1
1	B	766	SER	3.0
1	B	767	THR	3.0
1	B	366	SER	2.9
1	B	393	SER	2.9
1	B	396	VAL	2.9
1	B	391	LEU	2.8
1	B	379	GLY	2.8
1	B	757	GLU	2.7
1	B	765	ARG	2.6
1	B	551	ASP	2.6
1	B	759	GLU	2.6
1	A	377	THR	2.5
1	B	592	ASP	2.5
1	B	395	HIS	2.5
1	B	492	SER	2.5
1	B	390	SER	2.4
1	B	375	ASN	2.3
1	B	549	THR	2.3
1	B	494	LYS	2.3
1	A	589	ASP	2.2
1	B	388	LYS	2.2
1	A	381	ASP	2.2
1	A	491	GLU	2.2
1	A	384	GLY	2.1
1	A	571	GLU	2.1

## 6.2 Non-standard residues in protein, DNA, RNA chains [i](#)

In the following table, the Atoms column lists the number of modelled atoms in the group and the number defined in the chemical component dictionary. The B-factors column lists the minimum, median, 95<sup>th</sup> percentile and maximum values of B factors of atoms in the group. The column labelled 'Q< 0.9' lists the number of atoms with occupancy less than 0.9.

Mol	Type	Chain	Res	Atoms	RSCC	RSR	B-factors(Å <sup>2</sup> )	Q<0.9
1	CAS	A	318	9/10	0.96	0.18	43,46,54,56	3
1	CAS	B	318	9/10	0.97	0.15	38,40,45,46	3
1	CAS	A	470	9/10	0.98	0.11	35,38,51,51	3
1	CAS	B	470	9/10	0.98	0.12	33,35,45,45	3

### 6.3 Carbohydrates [i](#)

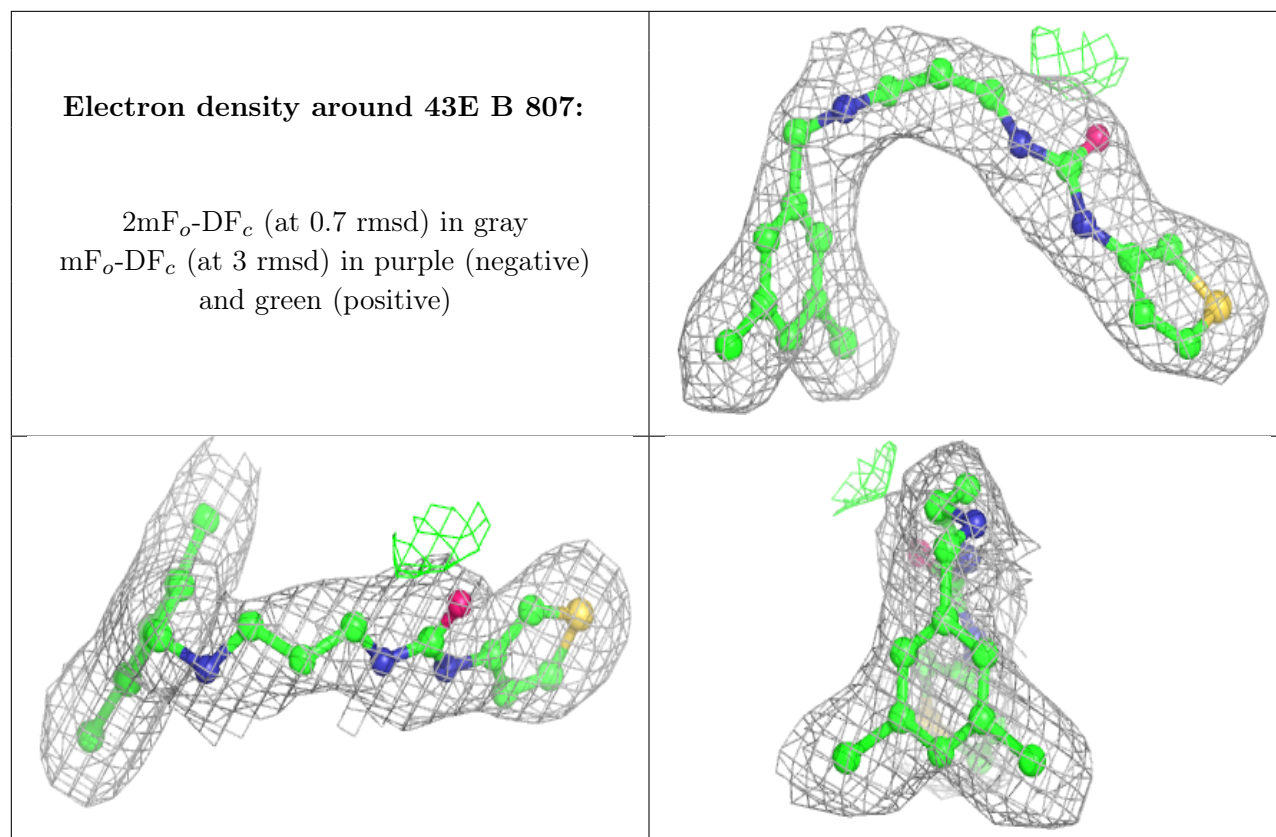
There are no monosaccharides in this entry.

### 6.4 Ligands [i](#)

In the following table, the Atoms column lists the number of modelled atoms in the group and the number defined in the chemical component dictionary. The B-factors column lists the minimum, median, 95<sup>th</sup> percentile and maximum values of B factors of atoms in the group. The column labelled 'Q< 0.9' lists the number of atoms with occupancy less than 0.9.

Mol	Type	Chain	Res	Atoms	RSCC	RSR	B-factors(Å <sup>2</sup> )	Q<0.9
3	DMS	A	807	4/4	0.84	0.33	87,89,89,92	0
2	GOL	A	801	6/6	0.87	0.27	44,45,49,49	0
2	GOL	A	804	6/6	0.89	0.28	49,52,52,53	0
2	GOL	B	804	6/6	0.89	0.29	48,50,51,51	0
2	GOL	A	802	6/6	0.89	0.29	54,57,58,61	0
2	GOL	B	803	6/6	0.92	0.16	38,39,40,40	0
3	DMS	A	806	4/4	0.93	0.17	82,87,87,88	0
2	GOL	A	803	6/6	0.93	0.14	44,45,46,46	0
3	DMS	B	801	4/4	0.93	0.23	60,63,64,68	0
3	DMS	B	805	4/4	0.93	0.21	78,81,81,82	0
2	GOL	B	802	6/6	0.94	0.30	43,44,46,48	0
3	DMS	A	805	4/4	0.96	0.17	74,78,78,78	0
5	SO4	B	806	5/5	0.97	0.27	54,55,58,60	0
6	43E	B	807	22/22	0.97	0.15	31,37,45,46	0
4	MET	A	808	9/9	0.98	0.17	30,31,31,33	0

The following is a graphical depiction of the model fit to experimental electron density of all instances of the Ligand of Interest. In addition, ligands with molecular weight > 250 and outliers as shown on the geometry validation Tables will also be included. Each fit is shown from different orientation to approximate a three-dimensional view.



## 6.5 Other polymers [i](#)

There are no such residues in this entry.