



Full wwPDB X-ray Structure Validation Report ⓘ

Feb 19, 2024 – 03:56 PM EST

PDB ID : 4KGM
Title : Bacterial tRNA(HIS) Guanylyltransferase (Thg1)-Like Protein in complex with ATP
Authors : Hyde, S.J.; Rao, B.S.; Eckenroth, B.E.; Jackman, J.E.; Doublie, S.
Deposited on : 2013-04-29
Resolution : 2.36 Å(reported)

This is a Full wwPDB X-ray Structure Validation Report for a publicly released PDB entry.

We welcome your comments at validation@mail.wwpdb.org

A user guide is available at

<https://www.wwpdb.org/validation/2017/XrayValidationReportHelp>

with specific help available everywhere you see the ⓘ symbol.

The types of validation reports are described at

<http://www.wwpdb.org/validation/2017/FAQs#types>.

The following versions of software and data (see [references ⓘ](#)) were used in the production of this report:

MolProbity : 4.02b-467
Mogul : 1.8.5 (274361), CSD as541be (2020)
Xtriage (Phenix) : 1.13
EDS : 2.36
buster-report : 1.1.7 (2018)
Percentile statistics : 20191225.v01 (using entries in the PDB archive December 25th 2019)
Refmac : 5.8.0158
CCP4 : 7.0.044 (Gargrove)
Ideal geometry (proteins) : Engh & Huber (2001)
Ideal geometry (DNA, RNA) : Parkinson et al. (1996)
Validation Pipeline (wwPDB-VP) : 2.36

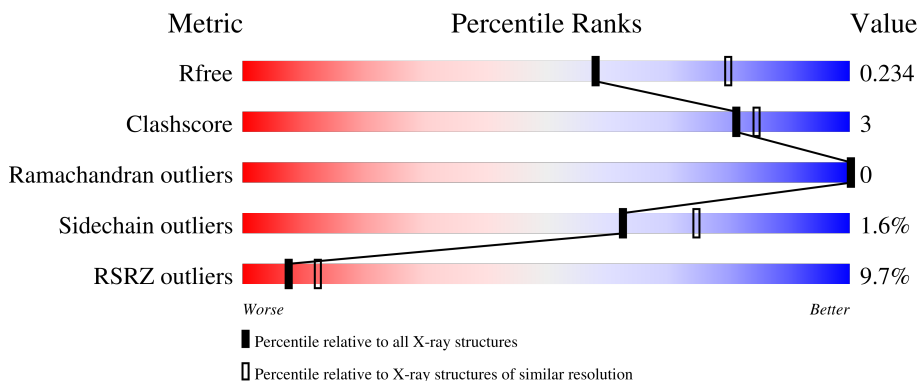
1 Overall quality at a glance

The following experimental techniques were used to determine the structure:

X-RAY DIFFRACTION

The reported resolution of this entry is 2.36 Å.

Percentile scores (ranging between 0-100) for global validation metrics of the entry are shown in the following graphic. The table shows the number of entries on which the scores are based.



Metric	Whole archive (#Entries)	Similar resolution (#Entries, resolution range(Å))
R_{free}	130704	1164 (2.36-2.36)
Clashscore	141614	1232 (2.36-2.36)
Ramachandran outliers	138981	1211 (2.36-2.36)
Sidechain outliers	138945	1212 (2.36-2.36)
RSRZ outliers	127900	1150 (2.36-2.36)

The table below summarises the geometric issues observed across the polymeric chains and their fit to the electron density. The red, orange, yellow and green segments of the lower bar indicate the fraction of residues that contain outliers for ≥ 3 , 2, 1 and 0 types of geometric quality criteria respectively. A grey segment represents the fraction of residues that are not modelled. The numeric value for each fraction is indicated below the corresponding segment, with a dot representing fractions $\leq 5\%$. The upper red bar (where present) indicates the fraction of residues that have poor fit to the electron density. The numeric value is given above the bar.

Mol	Chain	Length	Quality of chain
1	A	245	 18% 87% 7% 6%
1	B	245	 9% 85% 8% 7%
1	C	245	 6% 85% 8% 7%
1	D	245	 4% 87% 5% 9%

2 Entry composition [i](#)

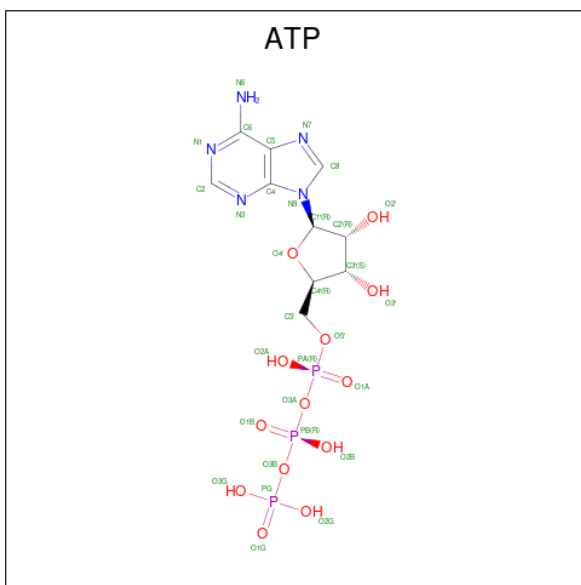
There are 6 unique types of molecules in this entry. The entry contains 7903 atoms, of which 0 are hydrogens and 0 are deuteriums.

In the tables below, the ZeroOcc column contains the number of atoms modelled with zero occupancy, the AltConf column contains the number of residues with at least one atom in alternate conformation and the Trace column contains the number of residues modelled with at most 2 atoms.

- Molecule 1 is a protein called Thg1-like uncharacterized protein.

Mol	Chain	Residues	Atoms					ZeroOcc	AltConf	Trace
			Total	C	N	O	S			
1	A	230	Total	C	N	O	S	0	1	0
			1812	1151	313	337	11			
1	B	228	Total	C	N	O	S	0	0	0
			1835	1170	312	342	11			
1	C	229	Total	C	N	O	S	0	0	0
			1845	1175	315	344	11			
1	D	224	Total	C	N	O	S	0	0	0
			1781	1136	306	329	10			

- Molecule 2 is ADENOSINE-5'-TRIPHOSPHATE (three-letter code: ATP) (formula: $C_{10}H_{16}N_5O_{13}P_3$).



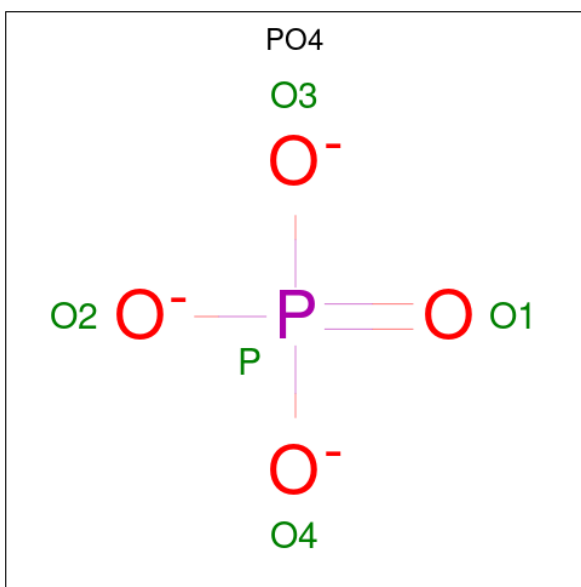
Mol	Chain	Residues	Atoms				ZeroOcc	AltConf	
			Total	C	N	O			P
2	A	1	Total	C	N	O	P	0	0
			31	10	5	13	3		
2	B	1	Total	C	N	O	P	0	0
			31	10	5	13	3		

Continued on next page...

Continued from previous page...

Mol	Chain	Residues	Atoms					ZeroOcc	AltConf
2	C	1	Total	C	N	O	P	0	0
			31	10	5	13	3		
2	D	1	Total	C	N	O	P	0	0
			31	10	5	13	3		

- Molecule 3 is PHOSPHATE ION (three-letter code: PO4) (formula: O₄P).



Mol	Chain	Residues	Atoms			ZeroOcc	AltConf
3	A	1	Total	O	P	0	0
			5	4	1		
3	A	1	Total	O	P	0	0
			5	4	1		
3	C	1	Total	O	P	0	0
			5	4	1		
3	C	1	Total	O	P	0	0
			5	4	1		

- Molecule 4 is MAGNESIUM ION (three-letter code: MG) (formula: Mg).

Mol	Chain	Residues	Atoms		ZeroOcc	AltConf
4	A	2	Total	Mg	0	0
			2	2		
4	B	2	Total	Mg	0	0
			2	2		
4	C	2	Total	Mg	0	0
			2	2		

Continued on next page...

Continued from previous page...

Mol	Chain	Residues	Atoms		ZeroOcc	AltConf
4	D	2	Total	Mg	0	0
			2	2		

- Molecule 5 is GLYCEROL (three-letter code: GOL) (formula: C₃H₈O₃).



Mol	Chain	Residues	Atoms			ZeroOcc	AltConf
5	A	1	Total	C	O	0	0
			6	3	3		
5	B	1	Total	C	O	0	0
			6	3	3		
5	C	1	Total	C	O	0	0
			6	3	3		
5	D	1	Total	C	O	0	0
			6	3	3		

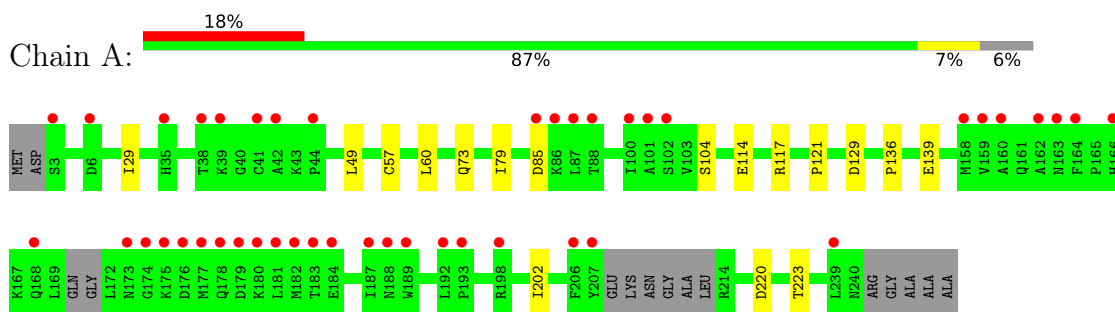
- Molecule 6 is water.

Mol	Chain	Residues	Atoms		ZeroOcc	AltConf
6	A	76	Total	O	0	0
			76	76		
6	B	92	Total	O	0	0
			92	92		
6	C	143	Total	O	0	0
			143	143		
6	D	143	Total	O	0	0
			143	143		

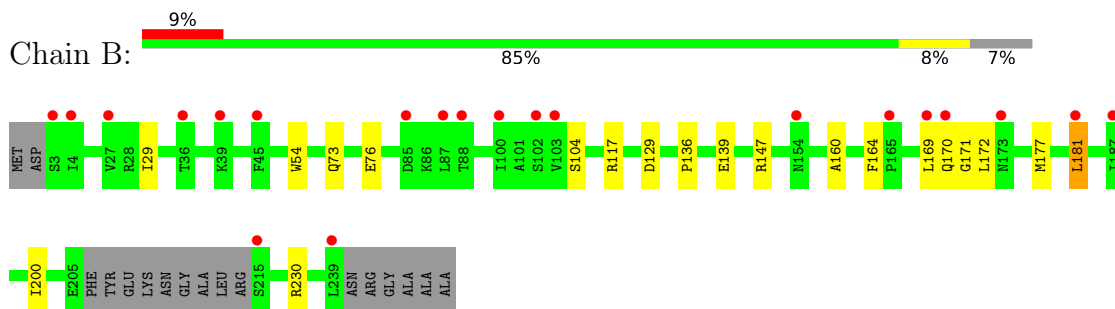
3 Residue-property plots [i](#)

These plots are drawn for all protein, RNA, DNA and oligosaccharide chains in the entry. The first graphic for a chain summarises the proportions of the various outlier classes displayed in the second graphic. The second graphic shows the sequence view annotated by issues in geometry and electron density. Residues are color-coded according to the number of geometric quality criteria for which they contain at least one outlier: green = 0, yellow = 1, orange = 2 and red = 3 or more. A red dot above a residue indicates a poor fit to the electron density ($RSRZ > 2$). Stretches of 2 or more consecutive residues without any outlier are shown as a green connector. Residues present in the sample, but not in the model, are shown in grey.

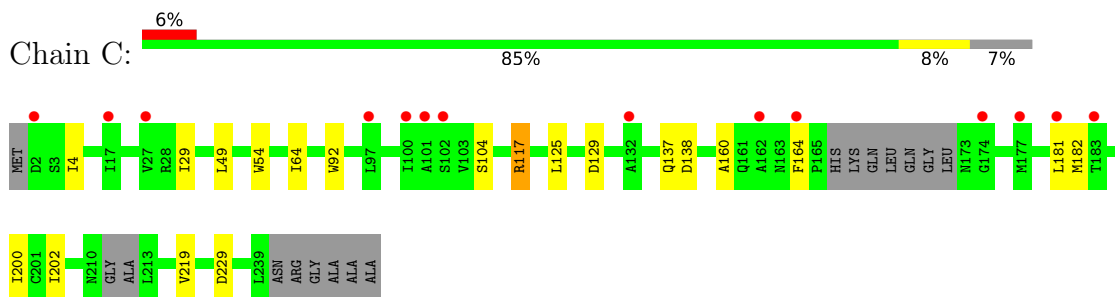
- Molecule 1: Thg1-like uncharacterized protein



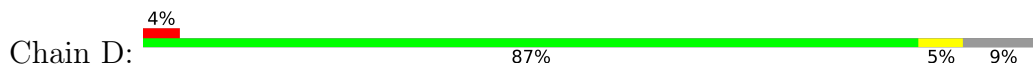
- Molecule 1: Thg1-like uncharacterized protein

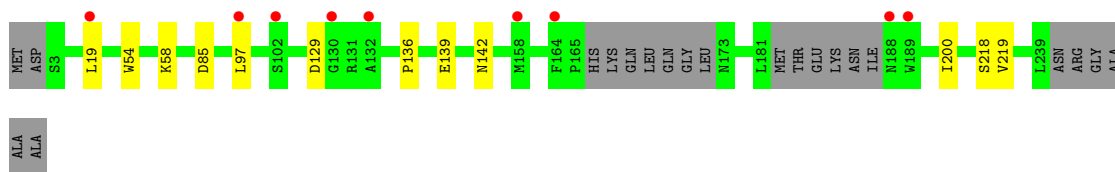


- Molecule 1: Thg1-like uncharacterized protein



- Molecule 1: Thg1-like uncharacterized protein





4 Data and refinement statistics

Property	Value	Source
Space group	C 2 2 21	Depositor
Cell constants a, b, c, α , β , γ	99.16Å 218.34Å 126.06Å 90.00° 90.00° 90.00°	Depositor
Resolution (Å)	36.70 – 2.36 36.70 – 2.36	Depositor EDS
% Data completeness (in resolution range)	99.5 (36.70-2.36) 99.5 (36.70-2.36)	Depositor EDS
R_{merge}	(Not available)	Depositor
R_{sym}	(Not available)	Depositor
$\langle I/\sigma(I) \rangle$ ¹	2.23 (at 2.37Å)	Xtriage
Refinement program	PHENIX (phenix.refine: 1.8.1_1168)	Depositor
R, R_{free}	0.199 , 0.232 0.200 , 0.234	Depositor DCC
R_{free} test set	5682 reflections (10.12%)	wwPDB-VP
Wilson B-factor (Å ²)	42.3	Xtriage
Anisotropy	0.369	Xtriage
Bulk solvent k_{sol} (e/Å ³), B_{sol} (Å ²)	0.33 , 49.2	EDS
L-test for twinning ²	$\langle L \rangle = 0.49$, $\langle L^2 \rangle = 0.33$	Xtriage
Estimated twinning fraction	No twinning to report.	Xtriage
F_o, F_c correlation	0.94	EDS
Total number of atoms	7903	wwPDB-VP
Average B, all atoms (Å ²)	31.0	wwPDB-VP

Xtriage's analysis on translational NCS is as follows: *The analyses of the Patterson function reveals a significant off-origin peak that is 27.53 % of the origin peak, indicating pseudo-translational symmetry. The chance of finding a peak of this or larger height randomly in a structure without pseudo-translational symmetry is equal to 2.1639e-03. The detected translational NCS is most likely also responsible for the elevated intensity ratio.*

¹Intensities estimated from amplitudes.

²Theoretical values of $\langle |L| \rangle$, $\langle L^2 \rangle$ for acentric reflections are 0.5, 0.333 respectively for untwinned datasets, and 0.375, 0.2 for perfectly twinned datasets.

5 Model quality [i](#)

5.1 Standard geometry [i](#)

Bond lengths and bond angles in the following residue types are not validated in this section: MG, GOL, PO4, ATP

The Z score for a bond length (or angle) is the number of standard deviations the observed value is removed from the expected value. A bond length (or angle) with $|Z| > 5$ is considered an outlier worth inspection. RMSZ is the root-mean-square of all Z scores of the bond lengths (or angles).

Mol	Chain	Bond lengths		Bond angles	
		RMSZ	# Z >5	RMSZ	# Z >5
1	A	0.21	0/1857	0.37	0/2522
1	B	0.22	0/1877	0.39	0/2541
1	C	0.23	0/1887	0.39	0/2553
1	D	0.23	0/1824	0.38	0/2475
All	All	0.22	0/7445	0.38	0/10091

There are no bond length outliers.

There are no bond angle outliers.

There are no chirality outliers.

There are no planarity outliers.

5.2 Too-close contacts [i](#)

In the following table, the Non-H and H(model) columns list the number of non-hydrogen atoms and hydrogen atoms in the chain respectively. The H(added) column lists the number of hydrogen atoms added and optimized by MolProbity. The Clashes column lists the number of clashes within the asymmetric unit, whereas Symm-Clashes lists symmetry-related clashes.

Mol	Chain	Non-H	H(model)	H(added)	Clashes	Symm-Clashes
1	A	1812	0	1672	8	0
1	B	1835	0	1769	13	0
1	C	1845	0	1744	12	0
1	D	1781	0	1677	6	0
2	A	31	0	12	1	0
2	B	31	0	12	0	0
2	C	31	0	12	1	0
2	D	31	0	12	0	0
3	A	10	0	0	0	0

Continued on next page...

Continued from previous page...

Mol	Chain	Non-H	H(model)	H(added)	Clashes	Symm-Clashes
3	C	10	0	0	0	0
4	A	2	0	0	0	0
4	B	2	0	0	0	0
4	C	2	0	0	0	0
4	D	2	0	0	0	0
5	A	6	0	8	0	0
5	B	6	0	8	0	0
5	C	6	0	8	1	0
5	D	6	0	8	0	0
6	A	76	0	0	0	0
6	B	92	0	0	1	0
6	C	143	0	0	2	2
6	D	143	0	0	0	1
All	All	7903	0	6942	37	3

The all-atom clashscore is defined as the number of clashes found per 1000 atoms (including hydrogen atoms). The all-atom clashscore for this structure is 3.

All (37) close contacts within the same asymmetric unit are listed below, sorted by their clash magnitude.

Atom-1	Atom-2	Interatomic distance (Å)	Clash overlap (Å)
1:B:164:PHE:HB2	1:B:169:LEU:HD21	1.83	0.60
1:A:29:ILE:HD11	1:A:104:SER:HB3	1.83	0.59
1:C:29:ILE:HD11	1:C:104:SER:HB3	1.88	0.54
1:B:169:LEU:HD12	1:B:177:MET:HG2	1.90	0.54
1:A:60:LEU:HD13	1:A:79:ILE:HD11	1.89	0.54
1:C:200:ILE:HD13	1:C:219:VAL:HG13	1.92	0.52
1:A:57:CYS:HB3	1:A:202:ILE:HG13	1.90	0.52
1:A:117:ARG:HD2	1:A:121:PRO:HA	1.91	0.52
1:D:54:TRP:NE1	1:D:200:ILE:HD11	2.24	0.51
1:C:54:TRP:NE1	1:C:200:ILE:HD11	2.25	0.51
1:C:117:ARG:HH12	1:C:125:LEU:HD23	1.75	0.51
1:B:230:ARG:NH1	6:B:487:HOH:O	2.39	0.50
1:B:169:LEU:HA	1:B:172:LEU:HD12	1.94	0.49
1:C:164:PHE:HE1	1:C:181:LEU:HD12	1.80	0.47
1:C:49:LEU:HD23	2:C:301:ATP:C6	2.50	0.46
1:D:58:LYS:HE2	1:D:218:SER:HA	1.97	0.46
1:B:136:PRO:HG2	1:B:139:GLU:HG3	1.97	0.46
1:B:170:GLN:HA	1:B:171:GLY:HA2	1.67	0.46
1:B:164:PHE:HE2	1:B:181:LEU:HD12	1.82	0.45
1:B:54:TRP:NE1	1:B:200:ILE:HD11	2.32	0.44

Continued on next page...

Continued from previous page...

Atom-1	Atom-2	Interatomic distance (Å)	Clash overlap (Å)
1:A:136:PRO:HG2	1:A:139:GLU:HG3	1.99	0.44
1:C:137:GLN:NE2	6:C:455:HOH:O	2.45	0.44
1:D:200:ILE:HD13	1:D:219:VAL:HG13	2.00	0.44
1:B:29:ILE:HD11	1:B:104:SER:HB3	2.01	0.43
1:C:160:ALA:HA	1:C:181:LEU:HD11	2.01	0.42
1:D:19:LEU:HD21	1:D:97:LEU:HD13	2.01	0.42
1:D:136:PRO:HG2	1:D:139:GLU:HG3	2.00	0.42
1:C:4:ILE:HD11	1:D:142:ASN:O	2.20	0.42
1:B:169:LEU:O	1:B:172:LEU:HG	2.19	0.41
1:A:49:LEU:HD23	2:A:301:ATP:C6	2.55	0.41
1:B:160:ALA:HA	1:B:181:LEU:HD11	2.02	0.41
1:C:64:ILE:HG12	1:C:92:TRP:CH2	2.56	0.41
1:C:229:ASP:OD2	6:C:449:HOH:O	2.22	0.41
1:C:138:ASP:CG	5:C:305:GOL:H31	2.41	0.40
1:A:220:ASP:O	1:A:223:THR:OG1	2.29	0.40
1:B:76:GLU:OE2	1:B:147:ARG:HD3	2.21	0.40
1:A:114:GLU:OE1	1:B:117:ARG:NH1	2.38	0.40

All (3) symmetry-related close contacts are listed below. The label for Atom-2 includes the symmetry operator and encoded unit-cell translations to be applied.

Atom-1	Atom-2	Interatomic distance (Å)	Clash overlap (Å)
6:D:452:HOH:O	6:D:453:HOH:O[3_756]	2.04	0.16
6:C:442:HOH:O	6:C:445:HOH:O[3_756]	2.14	0.06
6:C:442:HOH:O	6:C:444:HOH:O[3_756]	2.14	0.06

5.3 Torsion angles [\(i\)](#)

5.3.1 Protein backbone [\(i\)](#)

In the following table, the Percentiles column shows the percent Ramachandran outliers of the chain as a percentile score with respect to all X-ray entries followed by that with respect to entries of similar resolution.

The Analysed column shows the number of residues for which the backbone conformation was analysed, and the total number of residues.

Mol	Chain	Analysed	Favoured	Allowed	Outliers	Percentiles
1	A	225/245 (92%)	218 (97%)	7 (3%)	0	100 100

Continued on next page...

Continued from previous page...

Mol	Chain	Analysed	Favoured	Allowed	Outliers	Percentiles	
1	B	224/245 (91%)	221 (99%)	3 (1%)	0	100	100
1	C	223/245 (91%)	217 (97%)	6 (3%)	0	100	100
1	D	218/245 (89%)	212 (97%)	6 (3%)	0	100	100
All	All	890/980 (91%)	868 (98%)	22 (2%)	0	100	100

There are no Ramachandran outliers to report.

5.3.2 Protein sidechains [i](#)

In the following table, the Percentiles column shows the percent sidechain outliers of the chain as a percentile score with respect to all X-ray entries followed by that with respect to entries of similar resolution.

The Analysed column shows the number of residues for which the sidechain conformation was analysed, and the total number of residues.

Mol	Chain	Analysed	Rotameric	Outliers	Percentiles	
1	A	181/214 (85%)	178 (98%)	3 (2%)	60	72
1	B	193/214 (90%)	190 (98%)	3 (2%)	62	75
1	C	190/214 (89%)	186 (98%)	4 (2%)	53	65
1	D	182/214 (85%)	180 (99%)	2 (1%)	73	84
All	All	746/856 (87%)	734 (98%)	12 (2%)	62	75

All (12) residues with a non-rotameric sidechain are listed below:

Mol	Chain	Res	Type
1	A	73	GLN
1	A	85	ASP
1	A	129	ASP
1	B	73	GLN
1	B	129	ASP
1	B	181	LEU
1	C	117	ARG
1	C	129	ASP
1	C	182	MET
1	C	202	ILE
1	D	85	ASP
1	D	129	ASP

Sometimes sidechains can be flipped to improve hydrogen bonding and reduce clashes. All (3) such sidechains are listed below:

Mol	Chain	Res	Type
1	B	190	ASN
1	C	154	ASN
1	C	190	ASN

5.3.3 RNA [i](#)

There are no RNA molecules in this entry.

5.4 Non-standard residues in protein, DNA, RNA chains [i](#)

There are no non-standard protein/DNA/RNA residues in this entry.

5.5 Carbohydrates [i](#)

There are no monosaccharides in this entry.

5.6 Ligand geometry [i](#)

Of 20 ligands modelled in this entry, 8 are monoatomic - leaving 12 for Mogul analysis.

In the following table, the Counts columns list the number of bonds (or angles) for which Mogul statistics could be retrieved, the number of bonds (or angles) that are observed in the model and the number of bonds (or angles) that are defined in the Chemical Component Dictionary. The Link column lists molecule types, if any, to which the group is linked. The Z score for a bond length (or angle) is the number of standard deviations the observed value is removed from the expected value. A bond length (or angle) with $|Z| > 2$ is considered an outlier worth inspection. RMSZ is the root-mean-square of all Z scores of the bond lengths (or angles).

Mol	Type	Chain	Res	Link	Bond lengths			Bond angles		
					Counts	RMSZ	# Z > 2	Counts	RMSZ	# Z > 2
2	ATP	D	301	4	26,33,33	0.97	2 (7%)	31,52,52	1.53	5 (16%)
3	PO4	A	302	-	4,4,4	0.90	0	6,6,6	0.42	0
2	ATP	C	301	4	26,33,33	0.97	2 (7%)	31,52,52	1.56	5 (16%)
2	ATP	B	301	4	26,33,33	0.95	1 (3%)	31,52,52	1.54	5 (16%)
5	GOL	A	305	-	5,5,5	0.34	0	5,5,5	0.39	0
5	GOL	C	305	-	5,5,5	0.36	0	5,5,5	0.36	0
5	GOL	D	304	-	5,5,5	0.38	0	5,5,5	0.41	0
5	GOL	B	304	-	5,5,5	0.37	0	5,5,5	0.33	0

Mol	Type	Chain	Res	Link	Bond lengths			Bond angles		
					Counts	RMSZ	# Z > 2	Counts	RMSZ	# Z > 2
3	PO4	C	302	-	4,4,4	0.93	0	6,6,6	0.42	0
3	PO4	A	306	-	4,4,4	0.89	0	6,6,6	0.45	0
2	ATP	A	301	4	26,33,33	0.93	1 (3%)	31,52,52	1.53	5 (16%)
3	PO4	C	306	-	4,4,4	0.88	0	6,6,6	0.45	0

In the following table, the Chirals column lists the number of chiral outliers, the number of chiral centers analysed, the number of these observed in the model and the number defined in the Chemical Component Dictionary. Similar counts are reported in the Torsion and Rings columns. '-' means no outliers of that kind were identified.

Mol	Type	Chain	Res	Link	Chirals	Torsions	Rings
2	ATP	D	301	4	-	5/18/38/38	0/3/3/3
2	ATP	C	301	4	-	5/18/38/38	0/3/3/3
2	ATP	B	301	4	-	5/18/38/38	0/3/3/3
5	GOL	A	305	-	-	2/4/4/4	-
5	GOL	C	305	-	-	2/4/4/4	-
5	GOL	D	304	-	-	2/4/4/4	-
5	GOL	B	304	-	-	4/4/4/4	-
2	ATP	A	301	4	-	5/18/38/38	0/3/3/3

All (6) bond length outliers are listed below:

Mol	Chain	Res	Type	Atoms	Z	Observed(Å)	Ideal(Å)
2	C	301	ATP	C5-C4	2.54	1.47	1.40
2	B	301	ATP	C5-C4	2.51	1.47	1.40
2	A	301	ATP	C5-C4	2.49	1.47	1.40
2	D	301	ATP	C5-C4	2.48	1.47	1.40
2	D	301	ATP	C2-N3	2.27	1.35	1.32
2	C	301	ATP	C2-N3	2.05	1.35	1.32

All (20) bond angle outliers are listed below:

Mol	Chain	Res	Type	Atoms	Z	Observed(°)	Ideal(°)
2	C	301	ATP	PA-O3A-PB	-4.00	119.11	132.83
2	D	301	ATP	PA-O3A-PB	-3.86	119.56	132.83
2	A	301	ATP	PA-O3A-PB	-3.86	119.58	132.83
2	B	301	ATP	PA-O3A-PB	-3.83	119.68	132.83
2	C	301	ATP	N3-C2-N1	-3.26	123.59	128.68
2	D	301	ATP	N3-C2-N1	-3.22	123.64	128.68
2	B	301	ATP	N3-C2-N1	-3.20	123.68	128.68

Continued on next page...

Continued from previous page...

Mol	Chain	Res	Type	Atoms	Z	Observed(°)	Ideal(°)
2	C	301	ATP	PB-O3B-PG	-3.16	122.00	132.83
2	B	301	ATP	PB-O3B-PG	-3.12	122.10	132.83
2	A	301	ATP	N3-C2-N1	-3.12	123.80	128.68
2	D	301	ATP	C4-C5-N7	-3.09	106.18	109.40
2	D	301	ATP	C3'-C2'-C1'	3.04	105.55	100.98
2	A	301	ATP	PB-O3B-PG	-3.03	122.44	132.83
2	D	301	ATP	PB-O3B-PG	-3.00	122.54	132.83
2	C	301	ATP	C4-C5-N7	-2.98	106.30	109.40
2	C	301	ATP	C3'-C2'-C1'	2.93	105.39	100.98
2	A	301	ATP	C3'-C2'-C1'	2.88	105.31	100.98
2	B	301	ATP	C3'-C2'-C1'	2.77	105.14	100.98
2	B	301	ATP	C4-C5-N7	-2.75	106.54	109.40
2	A	301	ATP	C4-C5-N7	-2.74	106.54	109.40

There are no chirality outliers.

All (30) torsion outliers are listed below:

Mol	Chain	Res	Type	Atoms
2	A	301	ATP	PB-O3A-PA-O5'
2	A	301	ATP	C5'-O5'-PA-O3A
2	B	301	ATP	PB-O3A-PA-O5'
2	B	301	ATP	C5'-O5'-PA-O3A
2	C	301	ATP	PB-O3A-PA-O5'
2	C	301	ATP	C5'-O5'-PA-O1A
2	C	301	ATP	C5'-O5'-PA-O3A
2	D	301	ATP	PB-O3A-PA-O5'
2	D	301	ATP	C5'-O5'-PA-O1A
5	A	305	GOL	O1-C1-C2-O2
5	A	305	GOL	O1-C1-C2-C3
5	B	304	GOL	O1-C1-C2-C3
5	C	305	GOL	O1-C1-C2-C3
5	D	304	GOL	O1-C1-C2-C3
2	B	301	ATP	O4'-C4'-C5'-O5'
5	C	305	GOL	O1-C1-C2-O2
5	D	304	GOL	O1-C1-C2-O2
2	B	301	ATP	C3'-C4'-C5'-O5'
5	B	304	GOL	C1-C2-C3-O3
5	B	304	GOL	O1-C1-C2-O2
2	C	301	ATP	O4'-C4'-C5'-O5'
2	A	301	ATP	O4'-C4'-C5'-O5'
2	D	301	ATP	C5'-O5'-PA-O3A
2	A	301	ATP	C5'-O5'-PA-O1A

Continued on next page...

Continued from previous page...

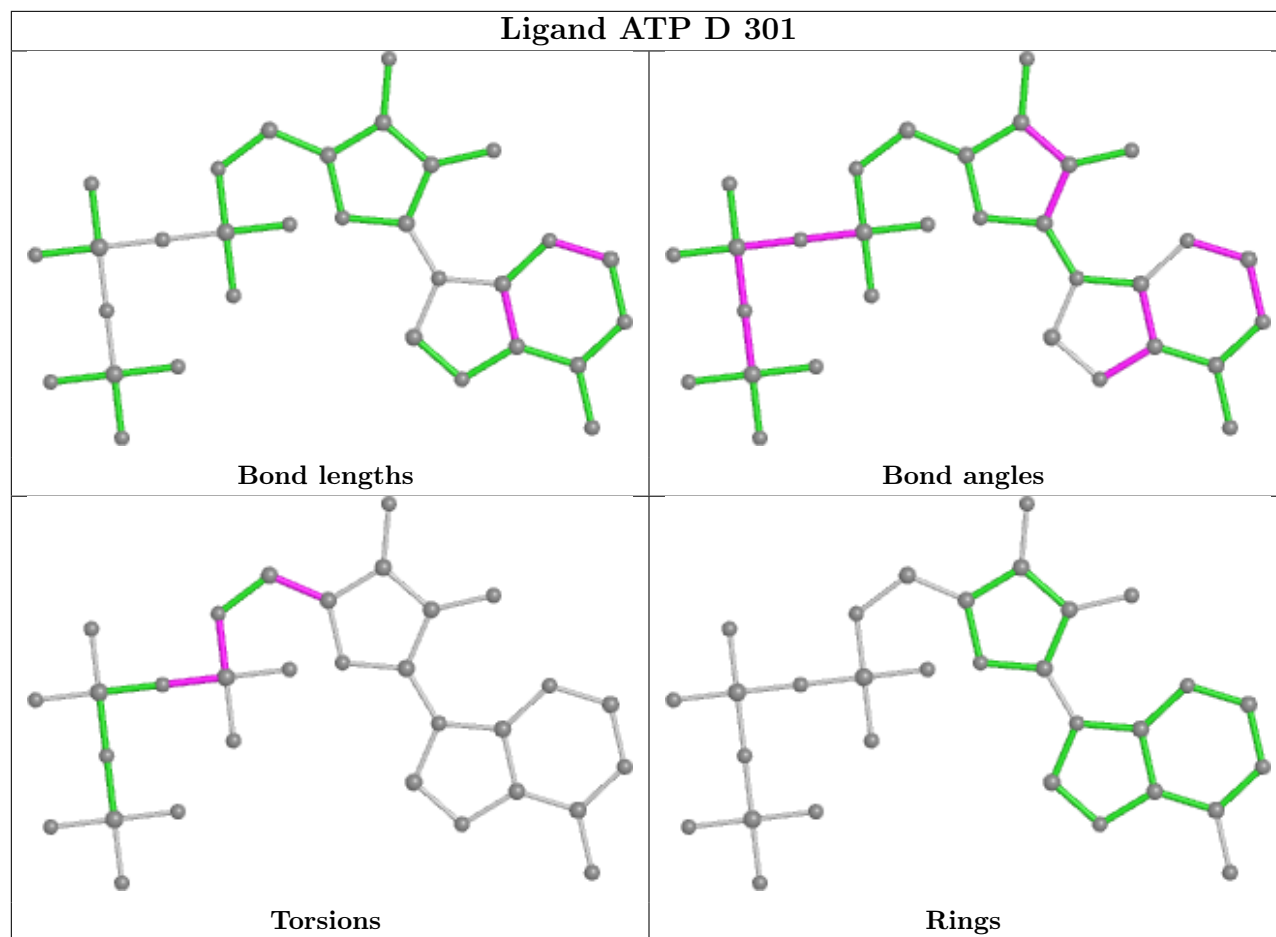
Mol	Chain	Res	Type	Atoms
2	B	301	ATP	C5'-O5'-PA-O1A
2	D	301	ATP	C5'-O5'-PA-O2A
2	D	301	ATP	O4'-C4'-C5'-O5'
2	C	301	ATP	C3'-C4'-C5'-O5'
2	A	301	ATP	C3'-C4'-C5'-O5'
5	B	304	GOL	O2-C2-C3-O3

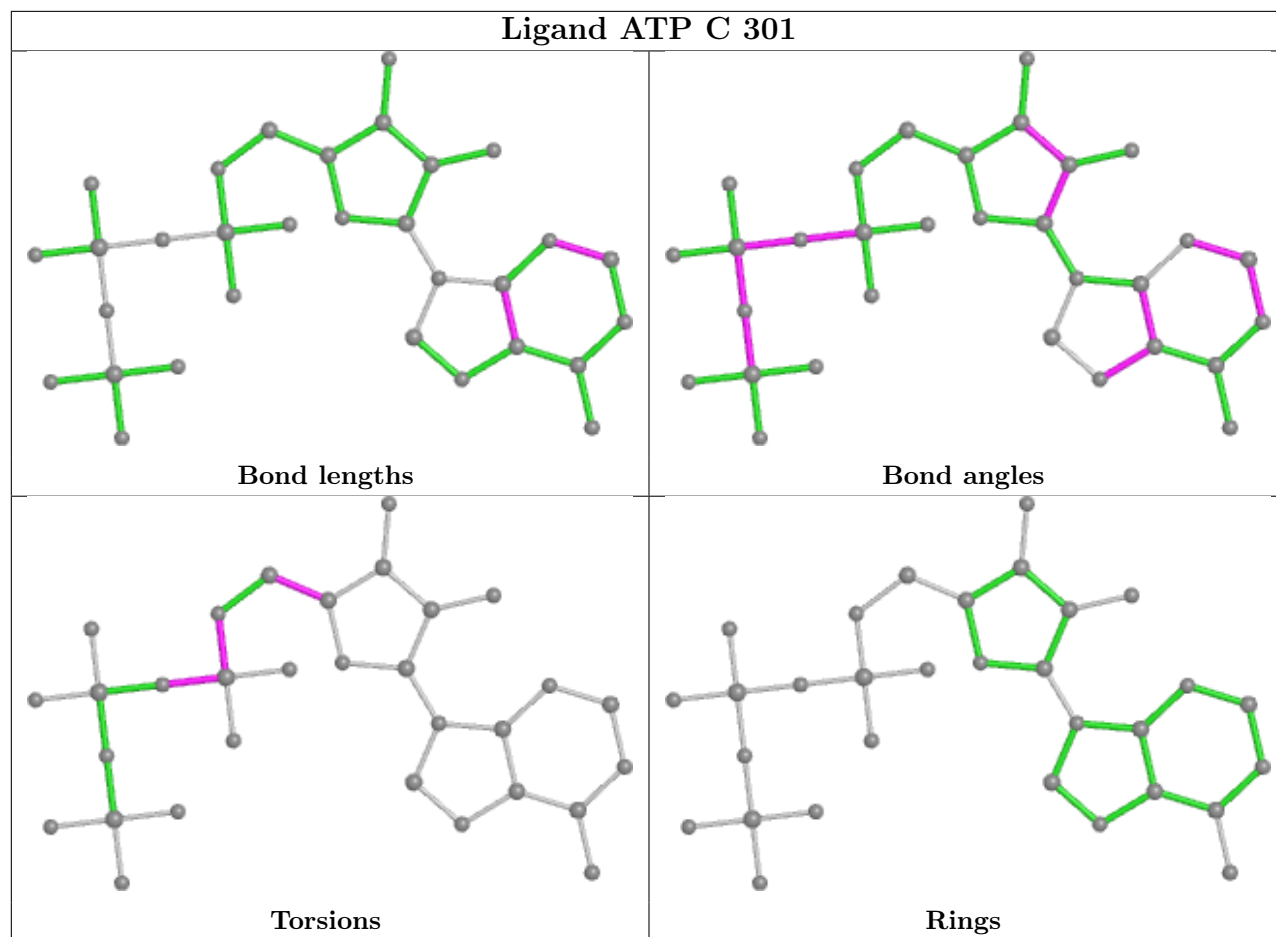
There are no ring outliers.

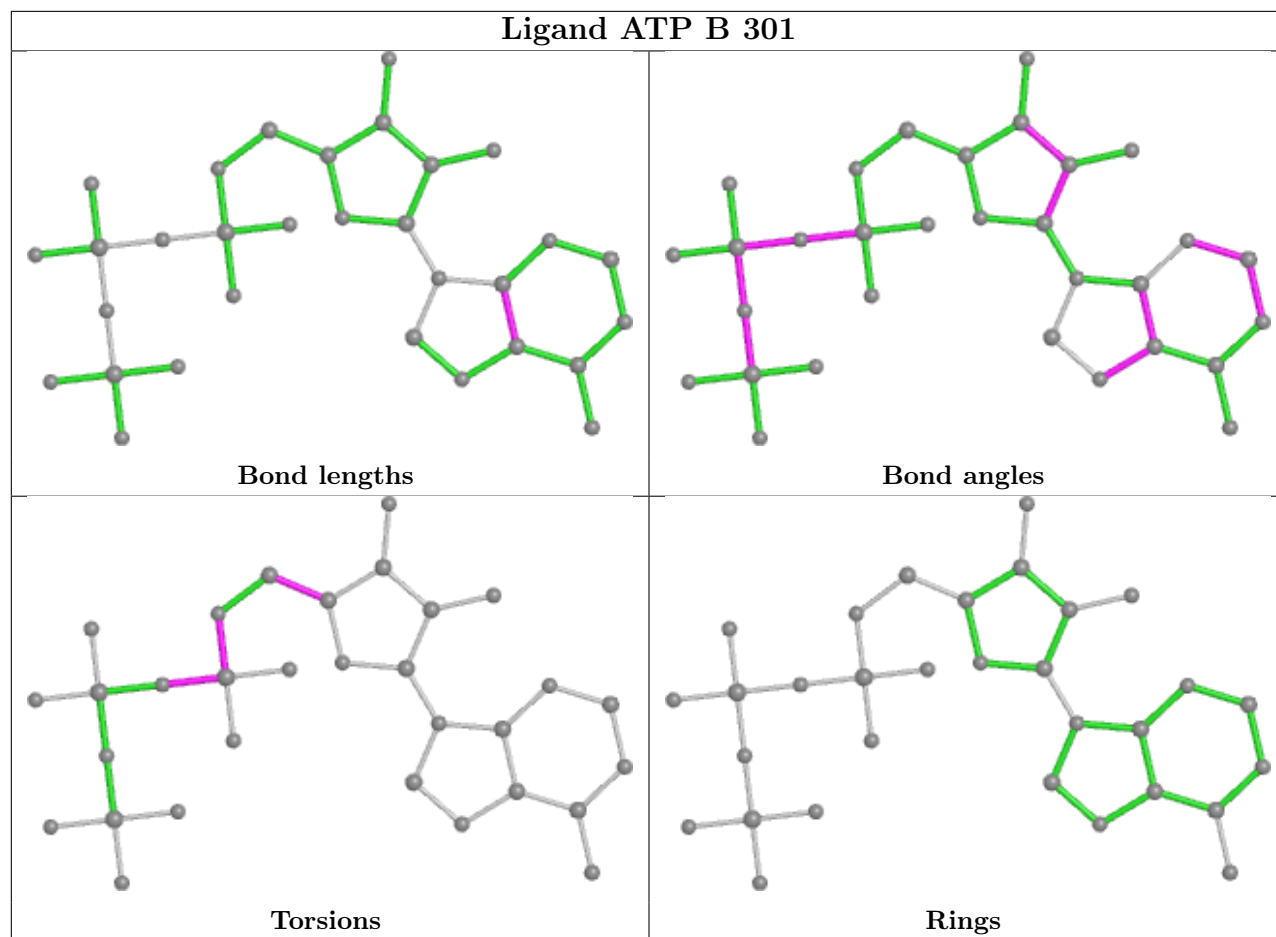
3 monomers are involved in 3 short contacts:

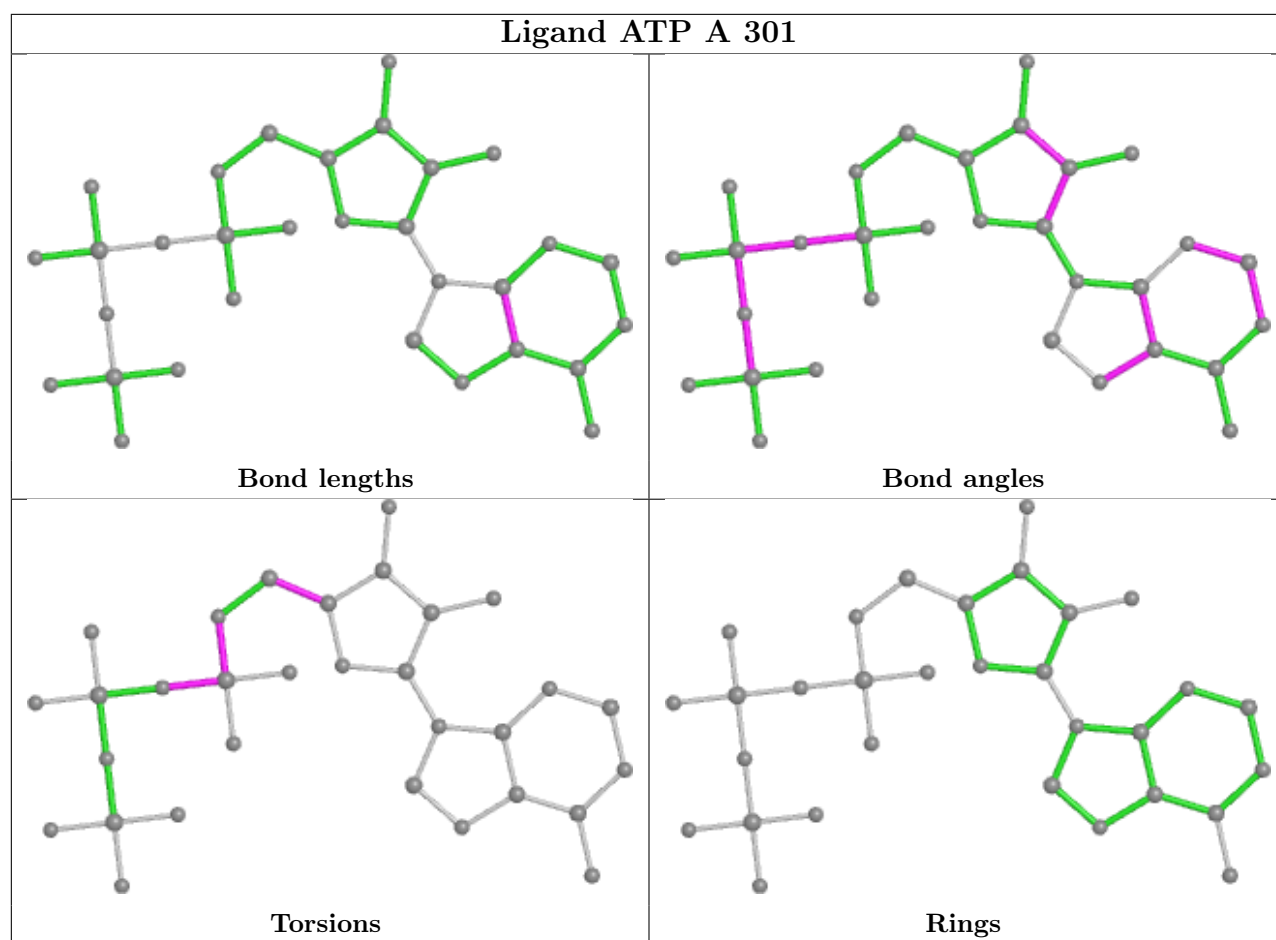
Mol	Chain	Res	Type	Clashes	Symm-Clashes
2	C	301	ATP	1	0
5	C	305	GOL	1	0
2	A	301	ATP	1	0

The following is a two-dimensional graphical depiction of Mogul quality analysis of bond lengths, bond angles, torsion angles, and ring geometry for all instances of the Ligand of Interest. In addition, ligands with molecular weight > 250 and outliers as shown on the validation Tables will also be included. For torsion angles, if less than 5% of the Mogul distribution of torsion angles is within 10 degrees of the torsion angle in question, then that torsion angle is considered an outlier. Any bond that is central to one or more torsion angles identified as an outlier by Mogul will be highlighted in the graph. For rings, the root-mean-square deviation (RMSD) between the ring in question and similar rings identified by Mogul is calculated over all ring torsion angles. If the average RMSD is greater than 60 degrees and the minimal RMSD between the ring in question and any Mogul-identified rings is also greater than 60 degrees, then that ring is considered an outlier. The outliers are highlighted in purple. The color gray indicates Mogul did not find sufficient equivalents in the CSD to analyse the geometry.









5.7 Other polymers [i](#)

There are no such residues in this entry.

5.8 Polymer linkage issues [i](#)

There are no chain breaks in this entry.

6 Fit of model and data

6.1 Protein, DNA and RNA chains

In the following table, the column labelled ‘#RSRZ > 2’ contains the number (and percentage) of RSRZ outliers, followed by percent RSRZ outliers for the chain as percentile scores relative to all X-ray entries and entries of similar resolution. The OWAB column contains the minimum, median, 95th percentile and maximum values of the occupancy-weighted average B-factor per residue. The column labelled ‘Q < 0.9’ lists the number of (and percentage) of residues with an average occupancy less than 0.9.

Mol	Chain	Analysed	<RSRZ>	#RSRZ>2	OWAB(Å ²)	Q<0.9
1	A	230/245 (93%)	0.76	44 (19%) 1 2	15, 40, 74, 82	0
1	B	228/245 (93%)	0.33	21 (9%) 9 14	15, 33, 55, 81	0
1	C	229/245 (93%)	0.30	14 (6%) 21 31	4, 23, 62, 73	0
1	D	224/245 (91%)	0.20	9 (4%) 38 51	5, 22, 59, 73	0
All	All	911/980 (92%)	0.40	88 (9%) 7 12	4, 30, 65, 82	0

All (88) RSRZ outliers are listed below:

Mol	Chain	Res	Type	RSRZ
1	B	170	GLN	5.7
1	A	187	ILE	5.3
1	A	239	LEU	4.7
1	A	158	MET	4.5
1	C	181	LEU	4.4
1	A	177	MET	4.2
1	C	177	MET	4.1
1	A	162	ALA	4.0
1	C	162	ALA	4.0
1	B	181	LEU	3.9
1	A	189	TRP	3.9
1	A	159	VAL	3.6
1	A	160	ALA	3.5
1	A	179	ASP	3.5
1	A	42	ALA	3.4
1	A	88	THR	3.4
1	A	183	THR	3.3
1	A	174	GLY	3.2
1	B	3	SER	3.2
1	A	206	PHE	3.1
1	A	168	GLN	3.1

Continued on next page...

Continued from previous page...

Mol	Chain	Res	Type	RSRZ
1	A	3	SER	3.1
1	A	181	LEU	3.0
1	A	44	PRO	3.0
1	A	164	PHE	3.0
1	A	173	ASN	3.0
1	B	85	ASP	2.9
1	A	182	MET	2.9
1	B	169	LEU	2.9
1	A	35[A]	HIS	2.8
1	C	2	ASP	2.7
1	C	132	ALA	2.7
1	C	164	PHE	2.7
1	A	193	PRO	2.7
1	A	188	ASN	2.7
1	D	164	PHE	2.7
1	A	41	CYS	2.6
1	C	174	GLY	2.6
1	C	100	ILE	2.6
1	B	165	PRO	2.6
1	A	207	TYR	2.6
1	B	4	ILE	2.5
1	D	158	MET	2.5
1	C	101	ALA	2.5
1	A	100	ILE	2.5
1	D	130	GLY	2.5
1	C	27	VAL	2.5
1	A	180	LYS	2.5
1	C	17	ILE	2.5
1	A	175	LYS	2.4
1	A	38	THR	2.4
1	B	215	SER	2.4
1	B	87	LEU	2.3
1	A	39	LYS	2.3
1	D	189	TRP	2.3
1	B	45	PHE	2.3
1	A	166	HIS	2.3
1	A	87	LEU	2.3
1	C	97	LEU	2.3
1	B	103	VAL	2.3
1	D	132	ALA	2.3
1	A	184	GLU	2.3
1	D	188	ASN	2.3

Continued on next page...

Continued from previous page...

Mol	Chain	Res	Type	RSRZ
1	C	102	SER	2.2
1	B	173	ASN	2.2
1	A	102	SER	2.2
1	C	183	THR	2.2
1	A	163	ASN	2.2
1	A	192	LEU	2.2
1	A	101	ALA	2.2
1	B	154	ASN	2.2
1	B	39	LYS	2.2
1	B	36	THR	2.2
1	B	187	ILE	2.1
1	A	85	ASP	2.1
1	A	178	GLN	2.1
1	B	88	THR	2.1
1	B	100	ILE	2.1
1	D	19	LEU	2.1
1	D	97	LEU	2.1
1	B	27	VAL	2.1
1	B	102	SER	2.1
1	A	176	ASP	2.0
1	D	102	SER	2.0
1	A	6	ASP	2.0
1	B	239	LEU	2.0
1	A	86	LYS	2.0
1	A	198	ARG	2.0

6.2 Non-standard residues in protein, DNA, RNA chains [i](#)

There are no non-standard protein/DNA/RNA residues in this entry.

6.3 Carbohydrates [i](#)

There are no monosaccharides in this entry.

6.4 Ligands [i](#)

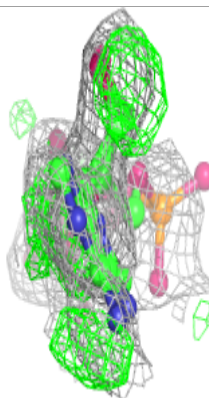
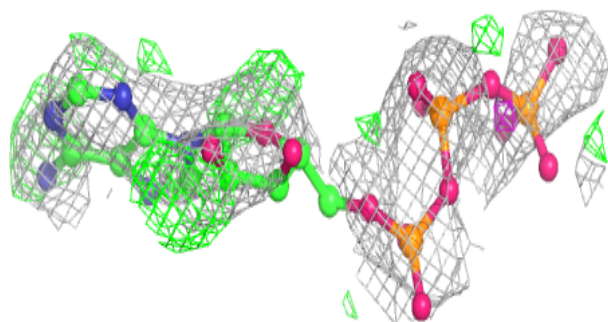
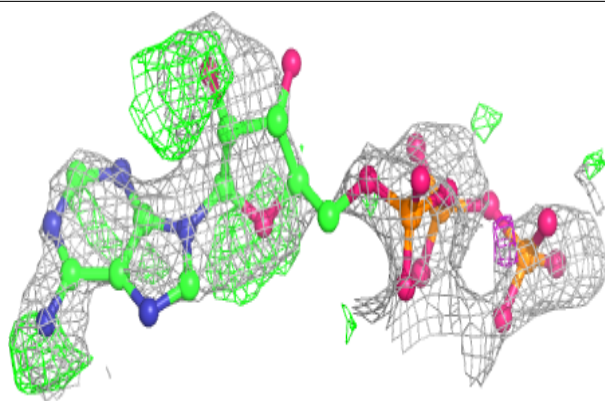
In the following table, the Atoms column lists the number of modelled atoms in the group and the number defined in the chemical component dictionary. The B-factors column lists the minimum, median, 95th percentile and maximum values of B factors of atoms in the group. The column labelled 'Q < 0.9' lists the number of atoms with occupancy less than 0.9.

Mol	Type	Chain	Res	Atoms	RSCC	RSR	B-factors(\AA^2)	Q<0.9
4	MG	D	303	1/1	0.51	0.11	40,40,40,40	0
2	ATP	D	301	31/31	0.72	0.33	24,35,41,41	31
2	ATP	B	301	31/31	0.81	0.24	28,37,47,52	31
2	ATP	A	301	31/31	0.82	0.21	35,42,49,60	31
5	GOL	B	304	6/6	0.83	0.29	38,39,43,43	0
2	ATP	C	301	31/31	0.85	0.20	23,37,48,56	13
5	GOL	D	304	6/6	0.86	0.23	14,19,21,22	6
4	MG	A	304	1/1	0.87	0.04	38,38,38,38	0
3	PO4	A	302	5/5	0.89	0.16	43,47,57,66	0
5	GOL	A	305	6/6	0.89	0.33	32,34,37,39	6
4	MG	B	302	1/1	0.92	0.09	37,37,37,37	0
5	GOL	C	305	6/6	0.92	0.27	14,19,20,24	6
4	MG	B	303	1/1	0.92	0.16	42,42,42,42	0
4	MG	C	303	1/1	0.93	0.08	25,25,25,25	0
4	MG	A	303	1/1	0.93	0.06	40,40,40,40	0
4	MG	C	304	1/1	0.94	0.11	34,34,34,34	0
4	MG	D	302	1/1	0.96	0.07	26,26,26,26	0
3	PO4	A	306	5/5	0.96	0.15	43,44,55,66	0
3	PO4	C	302	5/5	0.97	0.21	37,43,51,55	0
3	PO4	C	306	5/5	0.97	0.20	36,38,51,52	0

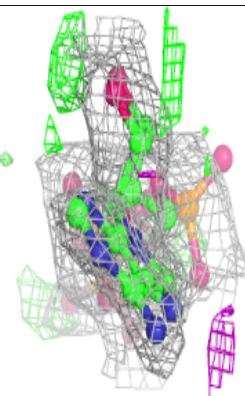
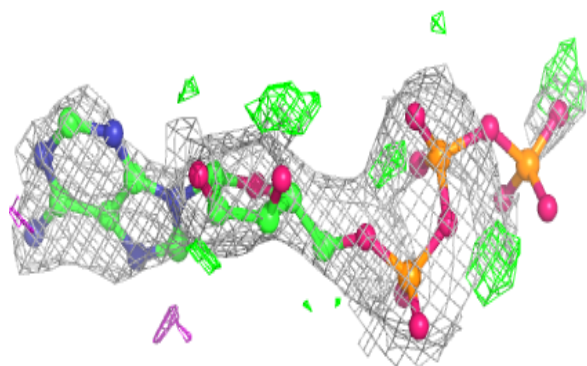
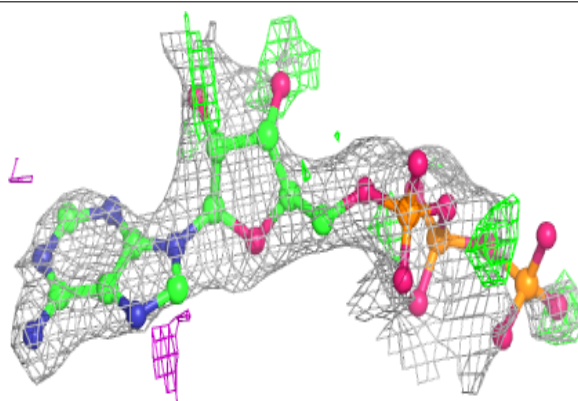
The following is a graphical depiction of the model fit to experimental electron density of all instances of the Ligand of Interest. In addition, ligands with molecular weight > 250 and outliers as shown on the geometry validation Tables will also be included. Each fit is shown from different orientation to approximate a three-dimensional view.

Electron density around ATP D 301:

$2mF_o-DF_c$ (at 0.7 rmsd) in gray
 mF_o-DF_c (at 3 rmsd) in purple (negative)
and green (positive)

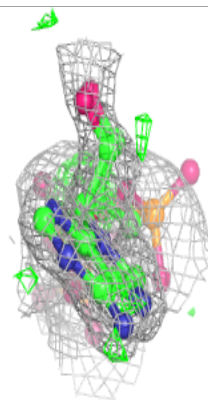
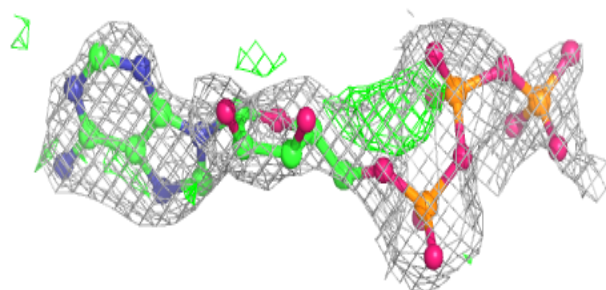
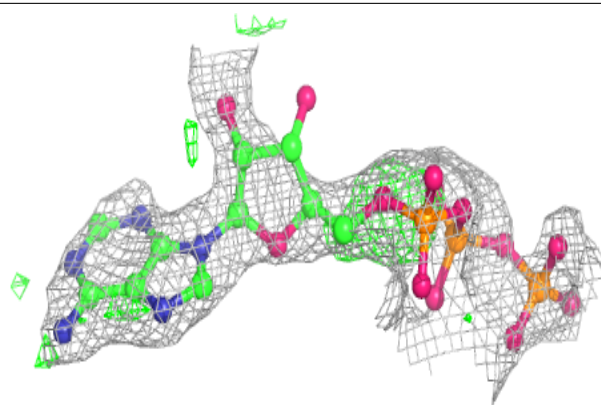
**Electron density around ATP B 301:**

$2mF_o-DF_c$ (at 0.7 rmsd) in gray
 mF_o-DF_c (at 3 rmsd) in purple (negative)
and green (positive)

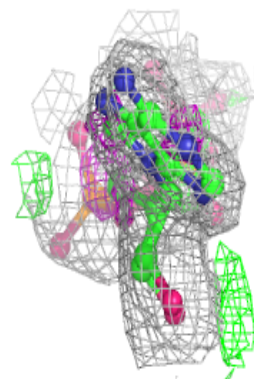
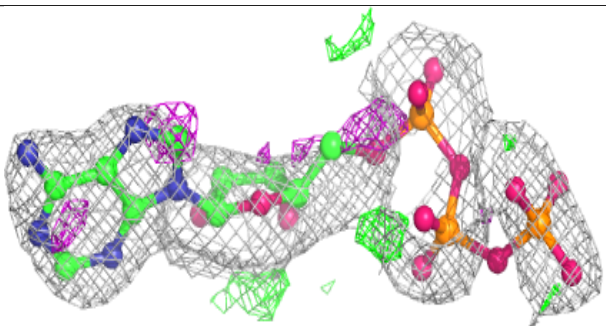
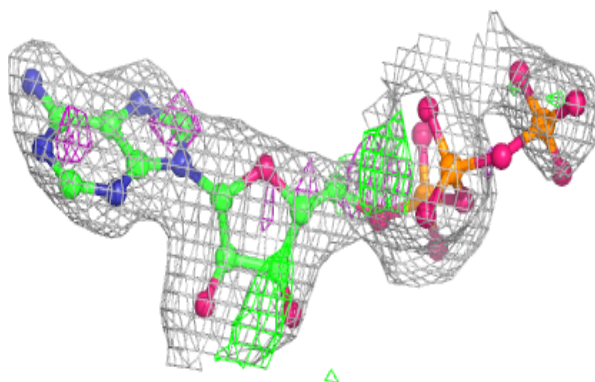


Electron density around ATP A 301:

$2mF_o-DF_c$ (at 0.7 rmsd) in gray
 mF_o-DF_c (at 3 rmsd) in purple (negative)
and green (positive)

**Electron density around ATP C 301:**

$2mF_o-DF_c$ (at 0.7 rmsd) in gray
 mF_o-DF_c (at 3 rmsd) in purple (negative)
and green (positive)



6.5 Other polymers [i](#)

There are no such residues in this entry.