



Full wwPDB X-ray Structure Validation Report ⓘ

Oct 8, 2024 – 11:26 AM EDT

PDB ID : 4IJP
Title : Crystal Structure of Human PRPF4B kinase domain in complex with 4-{5-[(2-Chloro-pyridin-4-ylmethyl)-carbamoyl]-thiophen-2-yl}-benzo[b]thiophene-2-carboxylic acid amine
Authors : Mechin, I.; Haas, K.; Chen, X.; Zhang, Y.; McLean, L.
Deposited on : 2012-12-22
Resolution : 2.25 Å(reported)

This is a Full wwPDB X-ray Structure Validation Report for a publicly released PDB entry.

We welcome your comments at validation@mail.wwpdb.org

A user guide is available at

<https://www.wwpdb.org/validation/2017/XrayValidationReportHelp>

with specific help available everywhere you see the ⓘ symbol.

The types of validation reports are described at

<http://www.wwpdb.org/validation/2017/FAQs#types>.

The following versions of software and data (see [references ⓘ](#)) were used in the production of this report:

MolProbity : 4.02b-467
Mogul : 2022.3.0, CSD as543be (2022)
Xtrriage (Phenix) : 1.20.1
EDS : 3.0
buster-report : 1.1.7 (2018)
Percentile statistics : 20231227.v01 (using entries in the PDB archive December 27th 2023)
CCP4 : 9.0.003 (Gargrove)
Density-Fitness : 1.0.11
Ideal geometry (proteins) : Engh & Huber (2001)
Ideal geometry (DNA, RNA) : Parkinson et al. (1996)
Validation Pipeline (wwPDB-VP) : 2.39

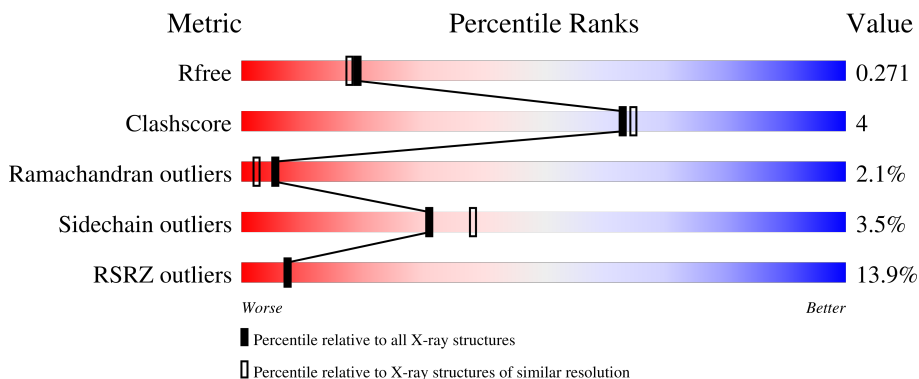
1 Overall quality at a glance

The following experimental techniques were used to determine the structure:

X-RAY DIFFRACTION

The reported resolution of this entry is 2.25 Å.

Percentile scores (ranging between 0-100) for global validation metrics of the entry are shown in the following graphic. The table shows the number of entries on which the scores are based.



Metric	Whole archive (#Entries)	Similar resolution (#Entries, resolution range(Å))
R_{free}	164625	1763 (2.26-2.26)
Clashscore	180529	1919 (2.26-2.26)
Ramachandran outliers	177936	1884 (2.26-2.26)
Sidechain outliers	177891	1885 (2.26-2.26)
RSRZ outliers	164620	1763 (2.26-2.26)

The table below summarises the geometric issues observed across the polymeric chains and their fit to the electron density. The red, orange, yellow and green segments of the lower bar indicate the fraction of residues that contain outliers for ≥ 3 , 2, 1 and 0 types of geometric quality criteria respectively. A grey segment represents the fraction of residues that are not modelled. The numeric value for each fraction is indicated below the corresponding segment, with a dot representing fractions $\leq 5\%$. The upper red bar (where present) indicates the fraction of residues that have poor fit to the electron density. The numeric value is given above the bar.

Mol	Chain	Length	Quality of chain
1	A	358	 13% 80% 11% • 8%
1	B	358	 13% 81% 12% • 7%

2 Entry composition

There are 4 unique types of molecules in this entry. The entry contains 5711 atoms, of which 0 are hydrogens and 0 are deuteriums.

In the tables below, the ZeroOcc column contains the number of atoms modelled with zero occupancy, the AltConf column contains the number of residues with at least one atom in alternate conformation and the Trace column contains the number of residues modelled with at most 2 atoms.

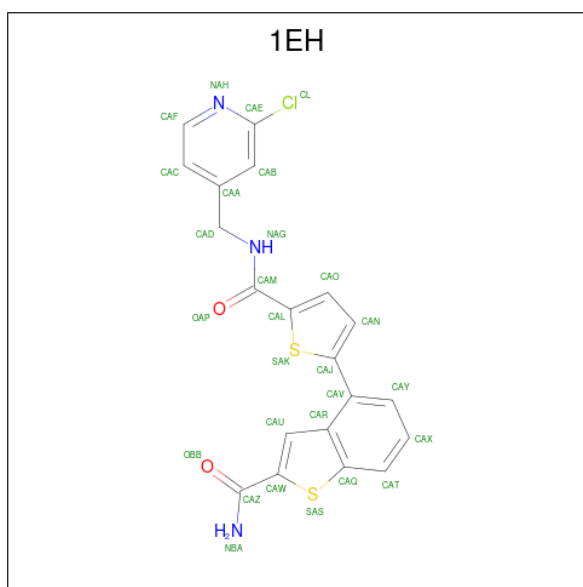
- Molecule 1 is a protein called Serine/threonine-protein kinase PRP4 homolog.

Mol	Chain	Residues	Atoms						ZeroOcc	AltConf	Trace
			Total	C	N	O	P	S			
1	A	331	Total	C	N	O	P	S	0	1	0
			2714	1735	475	488	1	15			
1	B	334	Total	C	N	O	P	S	0	1	0
			2738	1750	481	490	1	16			

There are 14 discrepancies between the modelled and reference sequences:

Chain	Residue	Modelled	Actual	Comment	Reference
A	656	MET	-	expression tag	UNP Q13523
A	1008	HIS	-	expression tag	UNP Q13523
A	1009	HIS	-	expression tag	UNP Q13523
A	1010	HIS	-	expression tag	UNP Q13523
A	1011	HIS	-	expression tag	UNP Q13523
A	1012	HIS	-	expression tag	UNP Q13523
A	1013	HIS	-	expression tag	UNP Q13523
B	656	MET	-	expression tag	UNP Q13523
B	1008	HIS	-	expression tag	UNP Q13523
B	1009	HIS	-	expression tag	UNP Q13523
B	1010	HIS	-	expression tag	UNP Q13523
B	1011	HIS	-	expression tag	UNP Q13523
B	1012	HIS	-	expression tag	UNP Q13523
B	1013	HIS	-	expression tag	UNP Q13523

- Molecule 2 is 4-(5-((2-chloropyridin-4-yl)methyl)carbamoyl)thiophen-2-yl)-1-benzothiophene-2-carboxamide (three-letter code: 1EH) (formula: C₂₀H₁₄ClN₃O₂S₂).



Mol	Chain	Residues	Atoms					ZeroOcc	AltConf	
			Total	C	Cl	N	O			S
2	A	1	28	20	1	3	2	2	0	0
2	B	1	28	20	1	3	2	2	0	0

- Molecule 3 is SULFATE ION (three-letter code: SO4) (formula: O₄S).



Mol	Chain	Residues	Atoms			ZeroOcc	AltConf
			Total	O	S		
3	A	1	5	4	1	0	0
3	A	1	5	4	1	0	0

Continued on next page...

Continued from previous page...

Mol	Chain	Residues	Atoms			ZeroOcc	AltConf
3	A	1	Total	O	S	0	0
			5	4	1		
3	A	1	Total	O	S	0	0
			5	4	1		
3	B	1	Total	O	S	0	0
			5	4	1		
3	B	1	Total	O	S	0	0
			5	4	1		

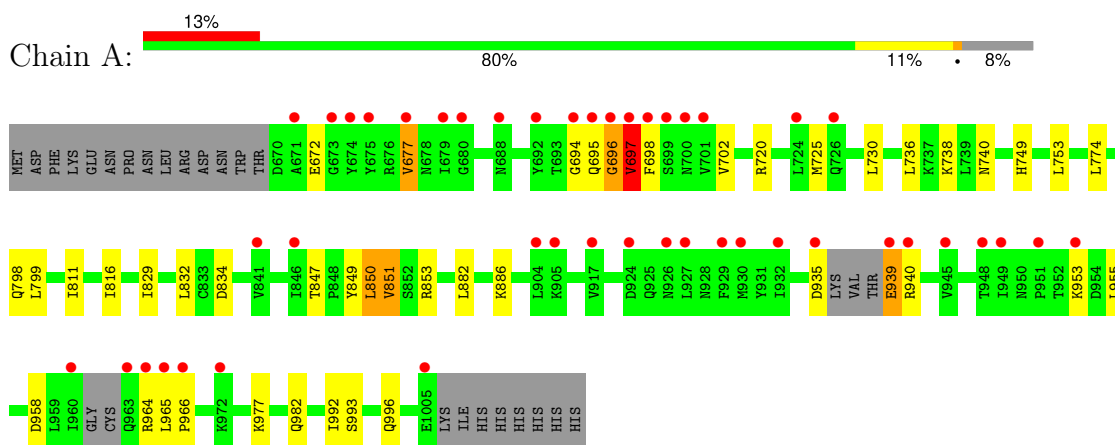
- Molecule 4 is water.

Mol	Chain	Residues	Atoms		ZeroOcc	AltConf
4	A	81	Total	O	0	0
			81	81		
4	B	92	Total	O	0	0
			92	92		

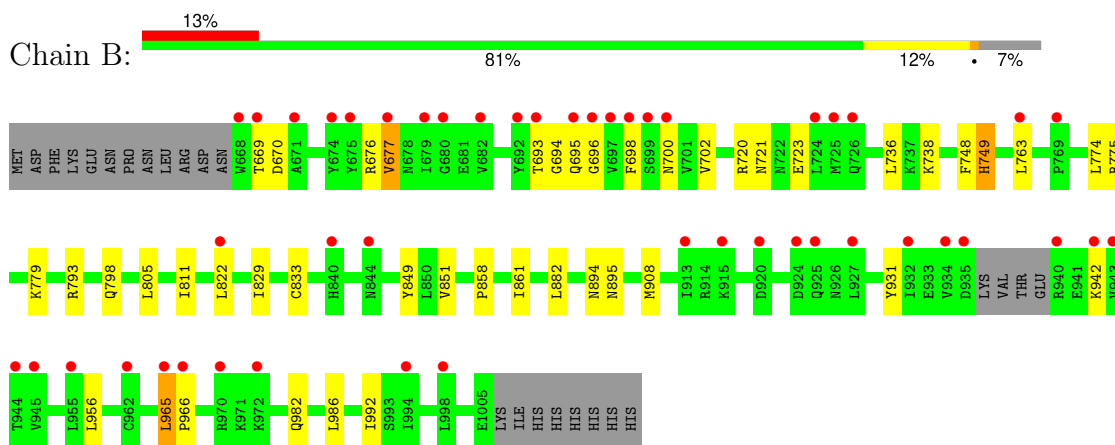
3 Residue-property plots [i](#)

These plots are drawn for all protein, RNA, DNA and oligosaccharide chains in the entry. The first graphic for a chain summarises the proportions of the various outlier classes displayed in the second graphic. The second graphic shows the sequence view annotated by issues in geometry and electron density. Residues are color-coded according to the number of geometric quality criteria for which they contain at least one outlier: green = 0, yellow = 1, orange = 2 and red = 3 or more. A red dot above a residue indicates a poor fit to the electron density ($RSRZ > 2$). Stretches of 2 or more consecutive residues without any outlier are shown as a green connector. Residues present in the sample, but not in the model, are shown in grey.

- Molecule 1: Serine/threonine-protein kinase PRP4 homolog



- Molecule 1: Serine/threonine-protein kinase PRP4 homolog



4 Data and refinement statistics

Property	Value	Source
Space group	P 1	Depositor
Cell constants a, b, c, α , β , γ	52.14Å 52.54Å 79.13Å 102.56° 105.25° 92.29°	Depositor
Resolution (Å)	47.61 – 2.25 47.61 – 2.25	Depositor EDS
% Data completeness (in resolution range)	98.3 (47.61-2.25) 98.3 (47.61-2.25)	Depositor EDS
R_{merge}	0.05	Depositor
R_{sym}	(Not available)	Depositor
$\langle I/\sigma(I) \rangle$ ¹	2.47 (at 2.24Å)	Xtrriage
Refinement program	BUSTER-TNT BUSTER 2.9.1, BUSTER 2.9.1	Depositor
R, R_{free}	0.250 , 0.265 0.257 , 0.271	Depositor DCC
R_{free} test set	1832 reflections (4.99%)	wwPDB-VP
Wilson B-factor (Å ²)	37.1	Xtrriage
Anisotropy	0.318	Xtrriage
Bulk solvent k_{sol} (e/Å ³), B_{sol} (Å ²)	0.33 , 28.4	EDS
L-test for twinning ²	$\langle L \rangle = 0.51$, $\langle L^2 \rangle = 0.34$	Xtrriage
Estimated twinning fraction	0.094 for -k,-h,-l	Xtrriage
F_o, F_c correlation	0.93	EDS
Total number of atoms	5711	wwPDB-VP
Average B, all atoms (Å ²)	51.0	wwPDB-VP

Xtrriage's analysis on translational NCS is as follows: *The largest off-origin peak in the Patterson function is 6.81% of the height of the origin peak. No significant pseudotranslation is detected.*

¹Intensities estimated from amplitudes.

²Theoretical values of $\langle |L| \rangle$, $\langle L^2 \rangle$ for acentric reflections are 0.5, 0.333 respectively for untwinned datasets, and 0.375, 0.2 for perfectly twinned datasets.

5 Model quality [i](#)

5.1 Standard geometry [i](#)

Bond lengths and bond angles in the following residue types are not validated in this section: SO4, 1EH, PTR

The Z score for a bond length (or angle) is the number of standard deviations the observed value is removed from the expected value. A bond length (or angle) with $|Z| > 5$ is considered an outlier worth inspection. RMSZ is the root-mean-square of all Z scores of the bond lengths (or angles).

Mol	Chain	Bond lengths		Bond angles	
		RMSZ	# Z >5	RMSZ	# Z >5
1	A	0.39	0/2748	0.60	1/3692 (0.0%)
1	B	0.39	0/2776	0.59	0/3733
All	All	0.39	0/5524	0.60	1/7425 (0.0%)

There are no bond length outliers.

All (1) bond angle outliers are listed below:

Mol	Chain	Res	Type	Atoms	Z	Observed(°)	Ideal(°)
1	A	696	GLY	C-N-CA	6.24	137.30	121.70

There are no chirality outliers.

There are no planarity outliers.

5.2 Too-close contacts [i](#)

In the following table, the Non-H and H(model) columns list the number of non-hydrogen atoms and hydrogen atoms in the chain respectively. The H(added) column lists the number of hydrogen atoms added and optimized by MolProbity. The Clashes column lists the number of clashes within the asymmetric unit, whereas Symm-Clashes lists symmetry-related clashes.

Mol	Chain	Non-H	H(model)	H(added)	Clashes	Symm-Clashes
1	A	2714	0	2770	22	0
1	B	2738	0	2786	17	0
2	A	28	0	14	2	0
2	B	28	0	14	2	0
3	A	20	0	0	0	0
3	B	10	0	0	0	0
4	A	81	0	0	0	0
4	B	92	0	0	0	0

Continued on next page...

Continued from previous page...

Mol	Chain	Non-H	H(model)	H(added)	Clashes	Symm-Clashes
All	All	5711	0	5584	43	0

The all-atom clashscore is defined as the number of clashes found per 1000 atoms (including hydrogen atoms). The all-atom clashscore for this structure is 4.

All (43) close contacts within the same asymmetric unit are listed below, sorted by their clash magnitude.

Atom-1	Atom-2	Interatomic distance (Å)	Clash overlap (Å)
1:B:965:LEU:HB3	1:B:966:PRO:HD3	1.32	1.12
1:B:965:LEU:HB3	1:B:966:PRO:CD	2.09	0.81
1:A:965:LEU:HB3	1:A:966:PRO:HD2	1.64	0.79
1:B:677:VAL:HG11	1:B:702:VAL:HG11	1.77	0.66
1:B:798:GLN:HE22	1:B:829:ILE:HA	1.63	0.62
2:B:1101:1EH:H12	2:B:1101:1EH:H8	1.86	0.56
1:A:798:GLN:HE22	1:A:829:ILE:HA	1.69	0.56
1:B:698:PHE:HA	1:B:720:ARG:HD2	1.87	0.55
1:A:696:GLY:H	1:A:697:VAL:HB	1.73	0.53
1:A:720:ARG:HD3	1:A:725:MET:HG3	1.90	0.53
1:A:677:VAL:HG21	1:A:695:GLN:HE22	1.73	0.53
1:A:740:ASN:HD21	1:A:753:LEU:H	1.57	0.52
1:A:677:VAL:HG11	1:A:702:VAL:HG11	1.91	0.52
1:B:908:MET:HG3	1:B:986:LEU:HD23	1.92	0.52
1:A:697:VAL:HG13	1:A:698:PHE:N	2.27	0.49
1:A:850:LEU:HD13	1:A:851:VAL:HG23	1.94	0.49
1:A:697:VAL:HG13	1:A:698:PHE:H	1.77	0.48
1:A:695:GLN:NE2	1:A:702:VAL:HG13	2.29	0.48
1:B:669:THR:HG21	1:B:721:ASN:HD22	1.80	0.47
1:A:965:LEU:HB3	1:A:966:PRO:CD	2.42	0.46
1:A:935:ASP:HB2	1:A:939:GLU:HB3	1.97	0.46
1:B:858:PRO:HA	1:B:861:ILE:HD12	1.98	0.46
1:B:695:GLN:HA	1:B:696:GLY:HA2	1.80	0.46
1:B:774:LEU:HD13	1:B:882:LEU:HD21	1.98	0.45
2:B:1101:1EH:H12	2:B:1101:1EH:CAN	2.47	0.45
1:A:749:HIS:CD2	1:A:798:GLN:HE21	2.34	0.44
1:B:895:ASN:HD21	1:B:931:TYR:HA	1.82	0.44
1:B:738:LYS:HD3	1:B:811:ILE:HD11	1.98	0.44
1:A:993:SER:H	1:A:996:GLN:HE21	1.64	0.44
1:A:955:LEU:HD23	1:A:977:LYS:HD2	2.01	0.43
1:B:749:HIS:CD2	1:B:798:GLN:HE21	2.35	0.43
1:A:738:LYS:HE3	1:A:811:ILE:HD11	2.01	0.42
1:B:695:GLN:HB2	1:B:700:ASN:HD22	1.85	0.42

Continued on next page...

Continued from previous page...

Atom-1	Atom-2	Interatomic distance (Å)	Clash overlap (Å)
1:A:982:GLN:HB3	1:A:992:ILE:HB	2.01	0.42
1:B:982:GLN:HB3	1:B:992:ILE:HB	2.02	0.42
2:A:1101:1EH:H12	2:A:1101:1EH:H8	2.01	0.42
1:B:748:PHE:HB3	1:B:805:LEU:HB2	2.01	0.42
1:B:822:LEU:HD23	1:B:833:CYS:SG	2.60	0.42
1:A:816:ILE:HG12	1:A:832[A]:LEU:HD11	2.02	0.41
1:A:774:LEU:HD13	1:A:882:LEU:HD11	2.02	0.41
2:A:1101:1EH:H12	2:A:1101:1EH:CAN	2.50	0.41
1:A:847:THR:HG23	1:A:850:LEU:HB2	2.03	0.40
1:A:697:VAL:CG1	1:A:698:PHE:N	2.84	0.40

There are no symmetry-related clashes.

5.3 Torsion angles

5.3.1 Protein backbone

In the following table, the Percentiles column shows the percent Ramachandran outliers of the chain as a percentile score with respect to all X-ray entries followed by that with respect to entries of similar resolution.

The Analysed column shows the number of residues for which the backbone conformation was analysed, and the total number of residues.

Mol	Chain	Analysed	Favoured	Allowed	Outliers	Percentiles	
1	A	325/358 (91%)	304 (94%)	15 (5%)	6 (2%)	7	3
1	B	330/358 (92%)	305 (92%)	17 (5%)	8 (2%)	5	2
All	All	655/716 (92%)	609 (93%)	32 (5%)	14 (2%)	5	2

All (14) Ramachandran outliers are listed below:

Mol	Chain	Res	Type
1	B	965	LEU
1	A	694	GLY
1	A	697	VAL
1	A	851	VAL
1	B	677	VAL
1	B	851	VAL
1	A	964	ARG
1	B	723	GLU

Continued on next page...

Continued from previous page...

Mol	Chain	Res	Type
1	B	749	HIS
1	B	942	LYS
1	A	853	ARG
1	A	834	ASP
1	B	676	ARG
1	B	694	GLY

5.3.2 Protein sidechains [i](#)

In the following table, the Percentiles column shows the percent sidechain outliers of the chain as a percentile score with respect to all X-ray entries followed by that with respect to entries of similar resolution.

The Analysed column shows the number of residues for which the sidechain conformation was analysed, and the total number of residues.

Mol	Chain	Analysed	Rotameric	Outliers	Percentiles	
1	A	298/323 (92%)	286 (96%)	12 (4%)	27	32
1	B	300/323 (93%)	291 (97%)	9 (3%)	36	44
All	All	598/646 (93%)	577 (96%)	21 (4%)	31	38

All (21) residues with a non-rotameric sidechain are listed below:

Mol	Chain	Res	Type
1	A	672	GLU
1	A	677	VAL
1	A	697	VAL
1	A	730	LEU
1	A	736	LEU
1	A	799	LEU
1	A	850	LEU
1	A	886	LYS
1	A	939	GLU
1	A	940	ARG
1	A	953	LYS
1	A	958	ASP
1	B	670	ASP
1	B	693	THR
1	B	736	LEU
1	B	763	LEU
1	B	775	ARG

Continued on next page...

Continued from previous page...

Mol	Chain	Res	Type
1	B	779	LYS
1	B	793	ARG
1	B	894	ASN
1	B	956	LEU

Sometimes sidechains can be flipped to improve hydrogen bonding and reduce clashes. All (15) such sidechains are listed below:

Mol	Chain	Res	Type
1	A	695	GLN
1	A	740	ASN
1	A	749	HIS
1	A	798	GLN
1	A	810	ASN
1	A	928	ASN
1	A	996	GLN
1	B	700	ASN
1	B	721	ASN
1	B	722	ASN
1	B	740	ASN
1	B	749	HIS
1	B	798	GLN
1	B	894	ASN
1	B	895	ASN

5.3.3 RNA [i](#)

There are no RNA molecules in this entry.

5.4 Non-standard residues in protein, DNA, RNA chains [i](#)

2 non-standard protein/DNA/RNA residues are modelled in this entry.

In the following table, the Counts columns list the number of bonds (or angles) for which Mogul statistics could be retrieved, the number of bonds (or angles) that are observed in the model and the number of bonds (or angles) that are defined in the Chemical Component Dictionary. The Link column lists molecule types, if any, to which the group is linked. The Z score for a bond length (or angle) is the number of standard deviations the observed value is removed from the expected value. A bond length (or angle) with $|Z| > 2$ is considered an outlier worth inspection. RMSZ is the root-mean-square of all Z scores of the bond lengths (or angles).

Mol	Type	Chain	Res	Link	Bond lengths			Bond angles		
					Counts	RMSZ	# Z > 2	Counts	RMSZ	# Z > 2
1	PTR	A	849	1	15,16,17	1.26	2 (13%)	17,22,24	1.04	2 (11%)
1	PTR	B	849	1	15,16,17	1.26	2 (13%)	17,22,24	1.10	1 (5%)

In the following table, the Chirals column lists the number of chiral outliers, the number of chiral centers analysed, the number of these observed in the model and the number defined in the Chemical Component Dictionary. Similar counts are reported in the Torsion and Rings columns. '-' means no outliers of that kind were identified.

Mol	Type	Chain	Res	Link	Chirals	Torsions	Rings
1	PTR	A	849	1	-	1/10/11/13	0/1/1/1
1	PTR	B	849	1	-	1/10/11/13	0/1/1/1

All (4) bond length outliers are listed below:

Mol	Chain	Res	Type	Atoms	Z	Observed(Å)	Ideal(Å)
1	A	849	PTR	P-OH	-2.63	1.54	1.59
1	B	849	PTR	CE2-CZ	2.43	1.43	1.38
1	B	849	PTR	P-OH	-2.37	1.55	1.59
1	A	849	PTR	CE2-CZ	2.04	1.42	1.38

All (3) bond angle outliers are listed below:

Mol	Chain	Res	Type	Atoms	Z	Observed(°)	Ideal(°)
1	B	849	PTR	OH-CZ-CE2	2.37	126.33	119.22
1	A	849	PTR	P-OH-CZ	-2.32	115.61	123.88
1	A	849	PTR	O2P-P-OH	2.31	112.16	105.32

There are no chirality outliers.

All (2) torsion outliers are listed below:

Mol	Chain	Res	Type	Atoms
1	A	849	PTR	O-C-CA-CB
1	B	849	PTR	O-C-CA-CB

There are no ring outliers.

No monomer is involved in short contacts.

5.5 Carbohydrates [i](#)

There are no oligosaccharides in this entry.

5.6 Ligand geometry

8 ligands are modelled in this entry.

In the following table, the Counts columns list the number of bonds (or angles) for which Mogul statistics could be retrieved, the number of bonds (or angles) that are observed in the model and the number of bonds (or angles) that are defined in the Chemical Component Dictionary. The Link column lists molecule types, if any, to which the group is linked. The Z score for a bond length (or angle) is the number of standard deviations the observed value is removed from the expected value. A bond length (or angle) with $|Z| > 2$ is considered an outlier worth inspection. RMSZ is the root-mean-square of all Z scores of the bond lengths (or angles).

Mol	Type	Chain	Res	Link	Bond lengths			Bond angles		
					Counts	RMSZ	# Z > 2	Counts	RMSZ	# Z > 2
3	SO4	A	1102	-	4,4,4	0.27	0	6,6,6	0.09	0
3	SO4	A	1105	-	4,4,4	0.27	0	6,6,6	0.08	0
3	SO4	A	1104	-	4,4,4	0.26	0	6,6,6	0.07	0
3	SO4	B	1102	-	4,4,4	0.26	0	6,6,6	0.08	0
3	SO4	B	1103	-	4,4,4	0.27	0	6,6,6	0.08	0
2	1EH	B	1101	-	23,31,31	1.98	2 (8%)	23,44,44	1.82	4 (17%)
3	SO4	A	1103	-	4,4,4	0.28	0	6,6,6	0.09	0
2	1EH	A	1101	-	23,31,31	2.06	2 (8%)	23,44,44	1.77	4 (17%)

In the following table, the Chirals column lists the number of chiral outliers, the number of chiral centers analysed, the number of these observed in the model and the number defined in the Chemical Component Dictionary. Similar counts are reported in the Torsion and Rings columns. '-' means no outliers of that kind were identified.

Mol	Type	Chain	Res	Link	Chirals	Torsions	Rings
2	1EH	A	1101	-	-	1/10/17/17	0/4/4/4
2	1EH	B	1101	-	-	1/10/17/17	0/4/4/4

All (4) bond length outliers are listed below:

Mol	Chain	Res	Type	Atoms	Z	Observed(Å)	Ideal(Å)
2	A	1101	1EH	CAV-CAJ	-8.26	1.40	1.48
2	B	1101	1EH	CAV-CAJ	-7.87	1.41	1.48
2	A	1101	1EH	CAW-SAS	-4.02	1.67	1.72
2	B	1101	1EH	CAW-SAS	-3.82	1.67	1.72

All (8) bond angle outliers are listed below:

Mol	Chain	Res	Type	Atoms	Z	Observed(°)	Ideal(°)
2	B	1101	1EH	CAB-CAE-NAH	-6.28	120.13	125.59

Continued on next page...

Continued from previous page...

Mol	Chain	Res	Type	Atoms	Z	Observed(°)	Ideal(°)
2	A	1101	1EH	CAB-CAE-NAH	-6.01	120.36	125.59
2	B	1101	1EH	CAF-NAH-CAE	4.13	121.52	115.58
2	A	1101	1EH	CAF-NAH-CAE	4.12	121.50	115.58
2	A	1101	1EH	CAC-CAF-NAH	-2.65	120.73	123.97
2	B	1101	1EH	CAC-CAF-NAH	-2.53	120.88	123.97
2	B	1101	1EH	CL-CAE-NAH	2.22	120.13	115.98
2	A	1101	1EH	CL-CAE-NAH	2.07	119.85	115.98

There are no chirality outliers.

All (2) torsion outliers are listed below:

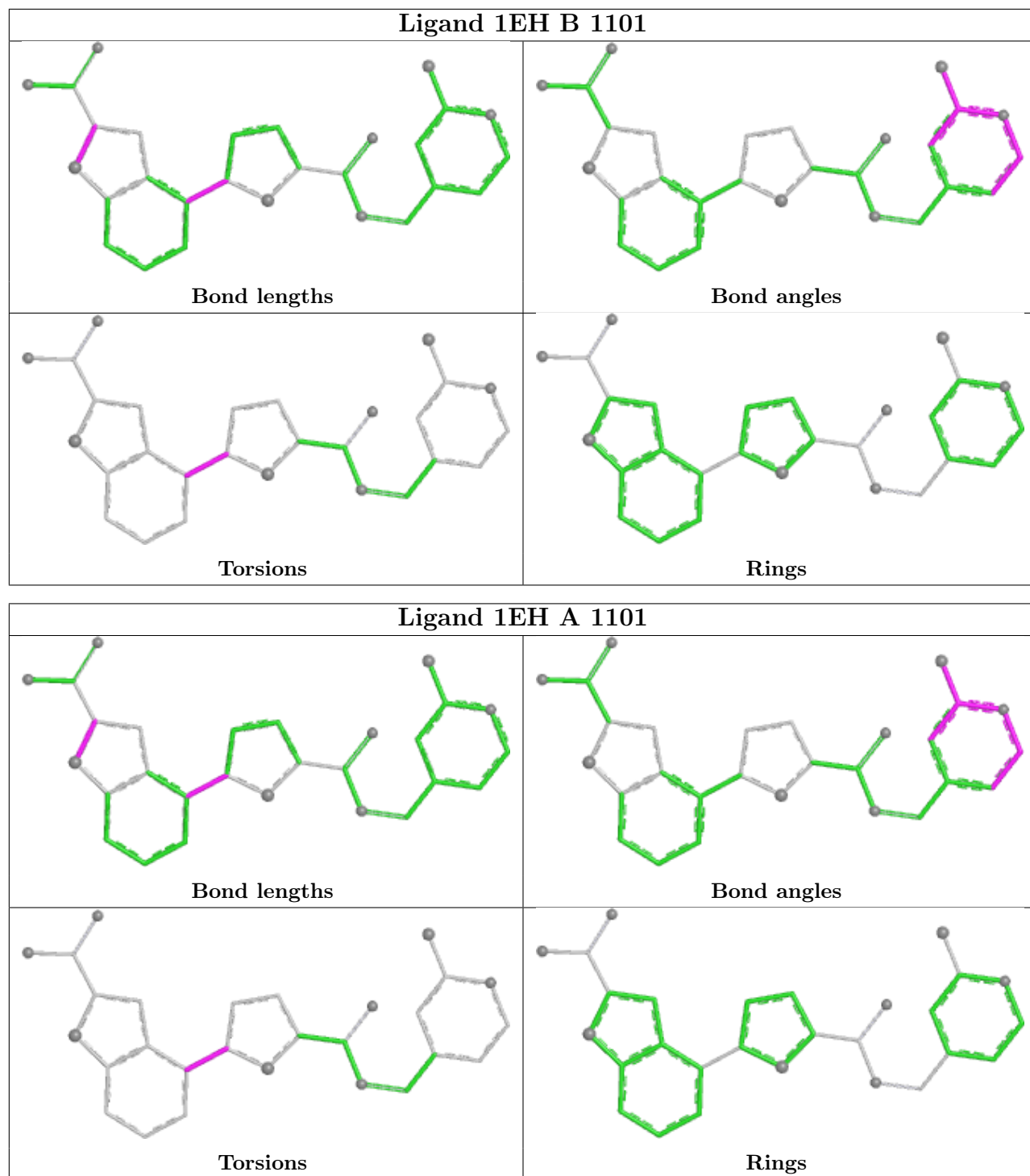
Mol	Chain	Res	Type	Atoms
2	B	1101	1EH	CAN-CAJ-CAV-CAR
2	A	1101	1EH	CAN-CAJ-CAV-CAR

There are no ring outliers.

2 monomers are involved in 4 short contacts:

Mol	Chain	Res	Type	Clashes	Symm-Clashes
2	B	1101	1EH	2	0
2	A	1101	1EH	2	0

The following is a two-dimensional graphical depiction of Mogul quality analysis of bond lengths, bond angles, torsion angles, and ring geometry for all instances of the Ligand of Interest. In addition, ligands with molecular weight > 250 and outliers as shown on the validation Tables will also be included. For torsion angles, if less than 5% of the Mogul distribution of torsion angles is within 10 degrees of the torsion angle in question, then that torsion angle is considered an outlier. Any bond that is central to one or more torsion angles identified as an outlier by Mogul will be highlighted in the graph. For rings, the root-mean-square deviation (RMSD) between the ring in question and similar rings identified by Mogul is calculated over all ring torsion angles. If the average RMSD is greater than 60 degrees and the minimal RMSD between the ring in question and any Mogul-identified rings is also greater than 60 degrees, then that ring is considered an outlier. The outliers are highlighted in purple. The color gray indicates Mogul did not find sufficient equivalents in the CSD to analyse the geometry.



5.7 Other polymers [i](#)

There are no such residues in this entry.

5.8 Polymer linkage issues

There are no chain breaks in this entry.

6 Fit of model and data

6.1 Protein, DNA and RNA chains

In the following table, the column labelled ‘#RSRZ > 2’ contains the number (and percentage) of RSRZ outliers, followed by percent RSRZ outliers for the chain as percentile scores relative to all X-ray entries and entries of similar resolution. The OWAB column contains the minimum, median, 95th percentile and maximum values of the occupancy-weighted average B-factor per residue. The column labelled ‘Q < 0.9’ lists the number of (and percentage) of residues with an average occupancy less than 0.9.

Mol	Chain	Analysed	<RSRZ>	#RSRZ>2	OWAB(Å ²)	Q<0.9
1	A	330/358 (92%)	0.93	45 (13%) 8 8	20, 45, 75, 102	1 (0%)
1	B	333/358 (93%)	1.03	47 (14%) 7 7	27, 47, 79, 104	1 (0%)
All	All	663/716 (92%)	0.98	92 (13%) 7 7	20, 46, 78, 104	2 (0%)

All (92) RSRZ outliers are listed below:

Mol	Chain	Res	Type	RSRZ
1	B	698	PHE	7.0
1	A	698	PHE	5.7
1	B	697	VAL	5.2
1	A	699	SER	5.2
1	A	695	GLN	5.1
1	A	965	LEU	4.9
1	B	965	LEU	4.9
1	B	724	LEU	4.4
1	A	724	LEU	4.1
1	A	696	GLY	4.1
1	A	964	ARG	4.0
1	B	994	ILE	3.8
1	B	668	TRP	3.7
1	B	945	VAL	3.6
1	A	697	VAL	3.5
1	B	679	ILE	3.5
1	A	679	ILE	3.4
1	B	669	THR	3.4
1	B	998	LEU	3.4
1	B	934	VAL	3.3
1	A	960	ILE	3.3
1	B	692	TYR	3.3
1	B	943	VAL	3.2
1	A	1005	GLU	3.2

Continued on next page...

Continued from previous page...

Mol	Chain	Res	Type	RSRZ
1	A	677	VAL	3.1
1	B	944	THR	3.1
1	A	966	PRO	3.0
1	B	695	GLN	2.9
1	B	840[A]	HIS	2.9
1	B	972	LYS	2.8
1	B	700	ASN	2.8
1	A	675	TYR	2.8
1	A	841	VAL	2.8
1	A	930	MET	2.8
1	A	694	GLY	2.7
1	A	963	GLN	2.7
1	A	935	ASP	2.7
1	B	942	LYS	2.7
1	B	726	GLN	2.6
1	A	846	ILE	2.5
1	B	925	GLN	2.5
1	A	905	LYS	2.5
1	A	953	LYS	2.5
1	A	726	GLN	2.5
1	B	699	SER	2.5
1	A	945	VAL	2.5
1	B	671	ALA	2.5
1	A	927	LEU	2.5
1	B	966	PRO	2.5
1	A	692	TYR	2.4
1	B	675	TYR	2.4
1	B	913	ILE	2.4
1	B	696	GLY	2.4
1	A	671	ALA	2.4
1	A	701	VAL	2.4
1	B	677	VAL	2.4
1	B	693	THR	2.4
1	A	674	TYR	2.4
1	B	844	ASN	2.4
1	B	920	ASP	2.4
1	B	674	TYR	2.3
1	B	763	LEU	2.3
1	A	940	ARG	2.3
1	B	927	LEU	2.3
1	B	924	ASP	2.2
1	B	932	ILE	2.2

Continued on next page...

Continued from previous page...

Mol	Chain	Res	Type	RSRZ
1	B	822	LEU	2.2
1	A	932	ILE	2.2
1	A	949	ILE	2.2
1	A	926	ASN	2.2
1	B	940	ARG	2.2
1	A	904	LEU	2.2
1	A	948	THR	2.2
1	A	972	LYS	2.2
1	B	915	LYS	2.2
1	A	951	PRO	2.1
1	A	917	VAL	2.1
1	B	725	MET	2.1
1	A	924	ASP	2.1
1	B	935	ASP	2.1
1	A	688	ASN	2.1
1	B	955	LEU	2.1
1	A	680	GLY	2.1
1	B	680	GLY	2.1
1	B	682	VAL	2.1
1	A	929	PHE	2.1
1	A	700	ASN	2.1
1	B	769	PRO	2.1
1	B	970	ARG	2.0
1	A	673	GLY	2.0
1	A	939	GLU	2.0
1	B	962	CYS	2.0

6.2 Non-standard residues in protein, DNA, RNA chains [\(i\)](#)

In the following table, the Atoms column lists the number of modelled atoms in the group and the number defined in the chemical component dictionary. The B-factors column lists the minimum, median, 95th percentile and maximum values of B factors of atoms in the group. The column labelled 'Q<0.9' lists the number of atoms with occupancy less than 0.9.

Mol	Type	Chain	Res	Atoms	RSCC	RSR	B-factors(Å ²)	Q<0.9
1	PTR	A	849	16/17	0.76	0.14	53,57,61,61	0
1	PTR	B	849	16/17	0.87	0.11	45,50,54,54	0

6.3 Carbohydrates [\(i\)](#)

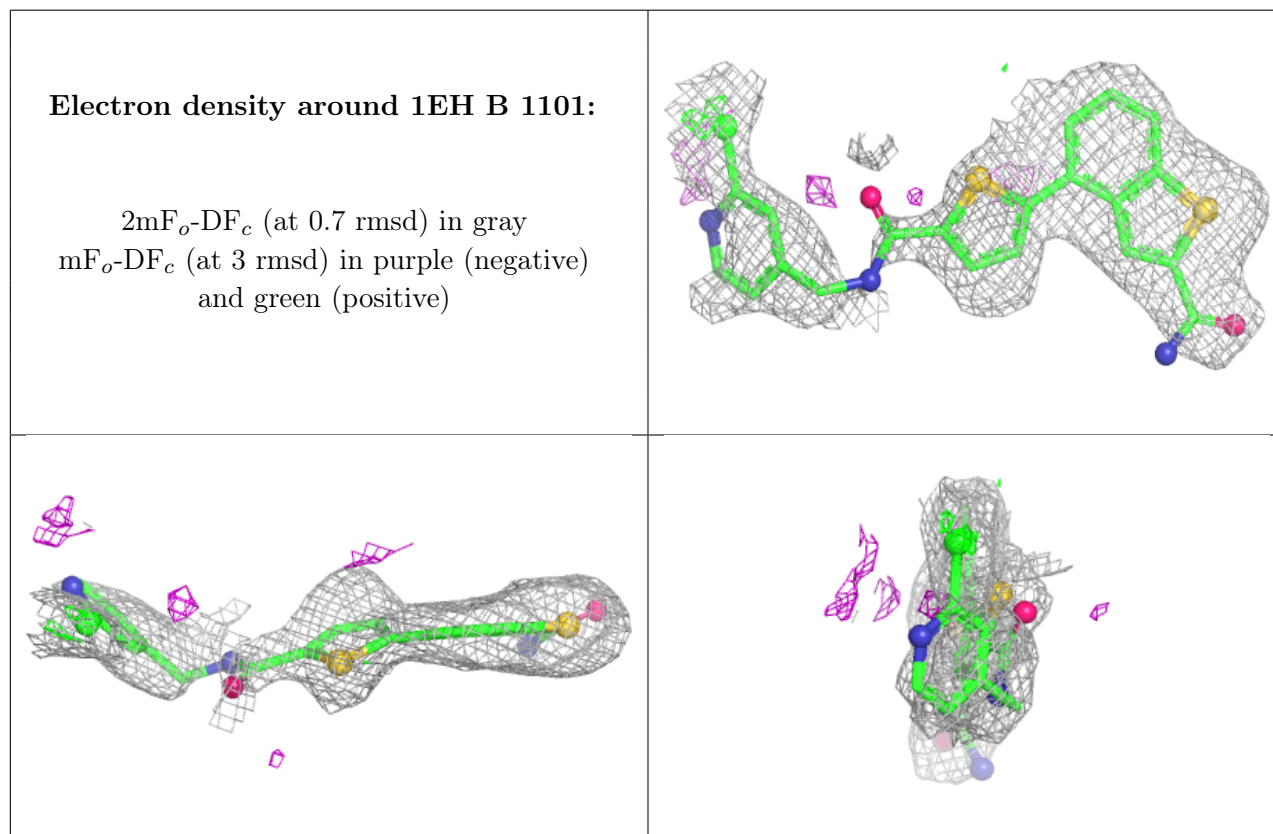
There are no monosaccharides in this entry.

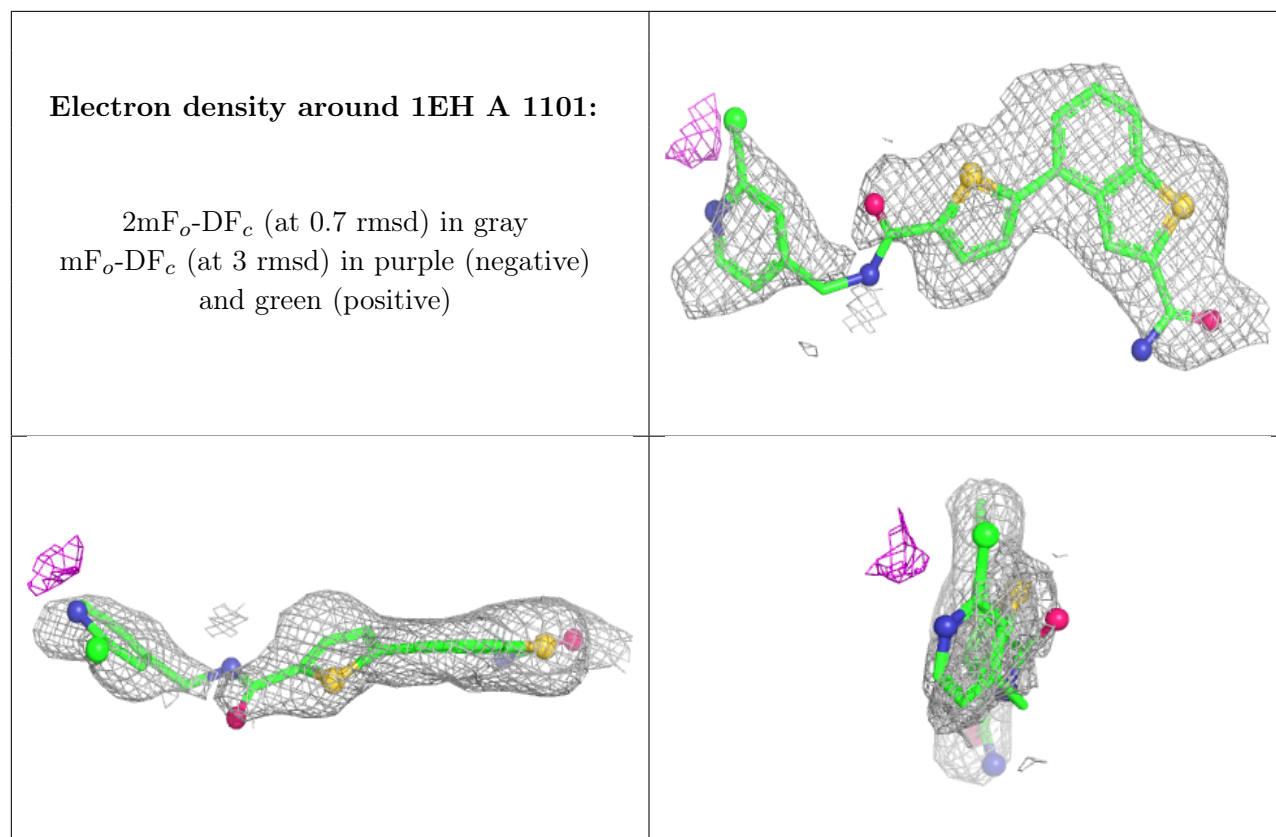
6.4 Ligands [i](#)

In the following table, the Atoms column lists the number of modelled atoms in the group and the number defined in the chemical component dictionary. The B-factors column lists the minimum, median, 95th percentile and maximum values of B factors of atoms in the group. The column labelled 'Q< 0.9' lists the number of atoms with occupancy less than 0.9.

Mol	Type	Chain	Res	Atoms	RSCC	RSR	B-factors(Å ²)	Q<0.9
3	SO4	B	1103	5/5	0.60	0.16	119,124,125,125	0
3	SO4	A	1105	5/5	0.70	0.14	116,120,121,122	0
3	SO4	A	1104	5/5	0.70	0.14	108,112,113,114	0
2	1EH	B	1101	28/28	0.76	0.18	42,93,135,207	0
3	SO4	A	1103	5/5	0.77	0.12	77,82,82,83	0
3	SO4	B	1102	5/5	0.83	0.15	86,90,91,92	0
2	1EH	A	1101	28/28	0.83	0.17	39,88,139,213	0
3	SO4	A	1102	5/5	0.88	0.13	74,78,79,79	0

The following is a graphical depiction of the model fit to experimental electron density of all instances of the Ligand of Interest. In addition, ligands with molecular weight > 250 and outliers as shown on the geometry validation Tables will also be included. Each fit is shown from different orientation to approximate a three-dimensional view.





6.5 Other polymers [i](#)

There are no such residues in this entry.