



Full wwPDB X-ray Structure Validation Report ⓘ

Aug 17, 2022 – 02:28 PM EDT

PDB ID : 4I3Y
Title : Crystal structure of Staphylococcal inositol monophosphatase-1: 100 mM LiCl soaked inhibitory complex
Authors : Dutta, A.; Bhattacharyya, S.; Dutta, D.; Das, A.K.
Deposited on : 2012-11-26
Resolution : 2.04 Å(reported)

This is a Full wwPDB X-ray Structure Validation Report for a publicly released PDB entry.

We welcome your comments at validation@mail.wwpdb.org

A user guide is available at

<https://www.wwpdb.org/validation/2017/XrayValidationReportHelp>

with specific help available everywhere you see the ⓘ symbol.

The types of validation reports are described at <http://www.wwpdb.org/validation/2017/FAQs#types>.

The following versions of software and data (see [references ⓘ](#)) were used in the production of this report:

MolProbity : 4.02b-467
Mogul : 1.8.5 (274361), CSD as541be (2020)
Xtriage (Phenix) : 1.13
EDS : 2.29
Percentile statistics : 20191225.v01 (using entries in the PDB archive December 25th 2019)
Refmac : 5.8.0158
CCP4 : 7.0.044 (Gargrove)
Ideal geometry (proteins) : Engh & Huber (2001)
Ideal geometry (DNA, RNA) : Parkinson et al. (1996)
Validation Pipeline (wwPDB-VP) : 2.29

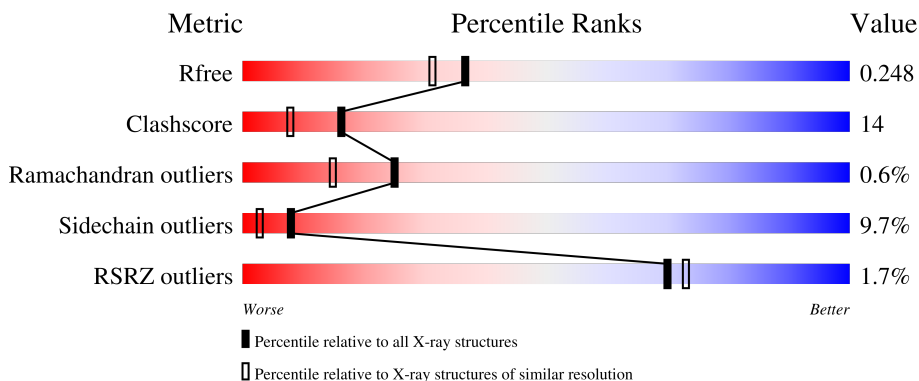
1 Overall quality at a glance

The following experimental techniques were used to determine the structure:

X-RAY DIFFRACTION


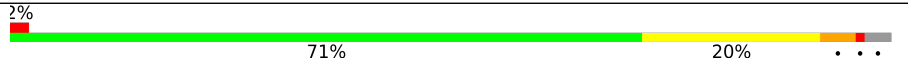
The reported resolution of this entry is 2.04 Å.

Percentile scores (ranging between 0-100) for global validation metrics of the entry are shown in the following graphic. The table shows the number of entries on which the scores are based.



Metric	Whole archive (#Entries)	Similar resolution (#Entries, resolution range(Å))
R_{free}	130704	1692 (2.04-2.04)
Clashscore	141614	1773 (2.04-2.04)
Ramachandran outliers	138981	1752 (2.04-2.04)
Sidechain outliers	138945	1752 (2.04-2.04)
RSRZ outliers	127900	1672 (2.04-2.04)

The table below summarises the geometric issues observed across the polymeric chains and their fit to the electron density. The red, orange, yellow and green segments of the lower bar indicate the fraction of residues that contain outliers for ≥ 3 , 2, 1 and 0 types of geometric quality criteria respectively. A grey segment represents the fraction of residues that are not modelled. The numeric value for each fraction is indicated below the corresponding segment, with a dot representing fractions $\leq 5\%$. The upper red bar (where present) indicates the fraction of residues that have poor fit to the electron density. The numeric value is given above the bar.

Mol	Chain	Length	Quality of chain
1	A	271	 % 69% 24% . . .
1	B	271	 2% 71% 20% . . .

2 Entry composition

There are 6 unique types of molecules in this entry. The entry contains 4519 atoms, of which 0 are hydrogens and 0 are deuteriums.

In the tables below, the ZeroOcc column contains the number of atoms modelled with zero occupancy, the AltConf column contains the number of residues with at least one atom in alternate conformation and the Trace column contains the number of residues modelled with at most 2 atoms.

- Molecule 1 is a protein called Inositol monophosphatase family protein.

Mol	Chain	Residues	Atoms					ZeroOcc	AltConf	Trace
			Total	C	N	O	S			
1	A	264	2122	1365	352	391	14	0	1	0
1	B	262	2114	1361	352	387	14	0	2	0

There are 12 discrepancies between the modelled and reference sequences:

Chain	Residue	Modelled	Actual	Comment	Reference
A	-5	HIS	-	expression tag	UNP Q6G709
A	-4	HIS	-	expression tag	UNP Q6G709
A	-3	HIS	-	expression tag	UNP Q6G709
A	-2	HIS	-	expression tag	UNP Q6G709
A	-1	HIS	-	expression tag	UNP Q6G709
A	0	HIS	-	expression tag	UNP Q6G709
B	-5	HIS	-	expression tag	UNP Q6G709
B	-4	HIS	-	expression tag	UNP Q6G709
B	-3	HIS	-	expression tag	UNP Q6G709
B	-2	HIS	-	expression tag	UNP Q6G709
B	-1	HIS	-	expression tag	UNP Q6G709
B	0	HIS	-	expression tag	UNP Q6G709

- Molecule 2 is PHOSPHATE ION (three-letter code: PO4) (formula: O₄P).



Mol	Chain	Residues	Atoms	ZeroOcc	AltConf
2	A	1	Total O P 5 4 1	0	0
2	B	1	Total O P 5 4 1	0	0

- Molecule 3 is MAGNESIUM ION (three-letter code: MG) (formula: Mg).

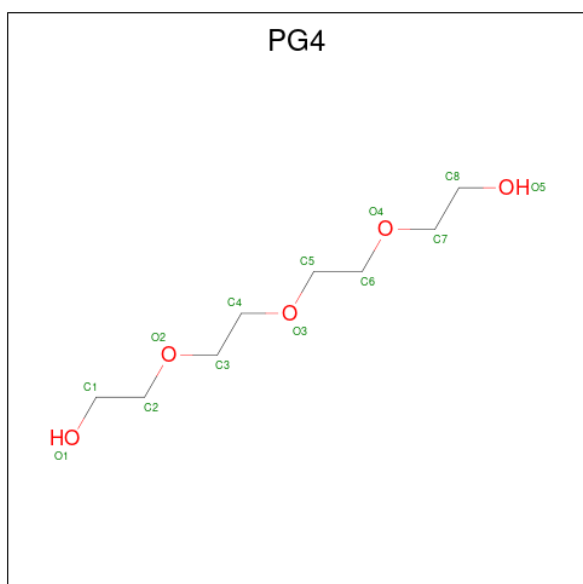
Mol	Chain	Residues	Atoms	ZeroOcc	AltConf
3	A	2	Total Mg 2 2	0	0
3	B	2	Total Mg 2 2	0	0

- Molecule 4 is GLYCEROL (three-letter code: GOL) (formula: C₃H₈O₃).



Mol	Chain	Residues	Atoms	ZeroOcc	AltConf
4	A	1	Total C O 6 3 3	0	0
4	A	1	Total C O 6 3 3	0	0
4	B	1	Total C O 6 3 3	0	0
4	B	1	Total C O 6 3 3	0	0
4	B	1	Total C O 6 3 3	0	0

- Molecule 5 is TETRAETHYLENE GLYCOL (three-letter code: PG4) (formula: C₈H₁₈O₅).



Mol	Chain	Residues	Atoms			ZeroOcc	AltConf
5	A	1	Total	C	O	0	0
			7	4	3		
5	A	1	Total	C	O	0	0
			7	4	3		
5	A	1	Total	C	O	0	0
			7	4	3		

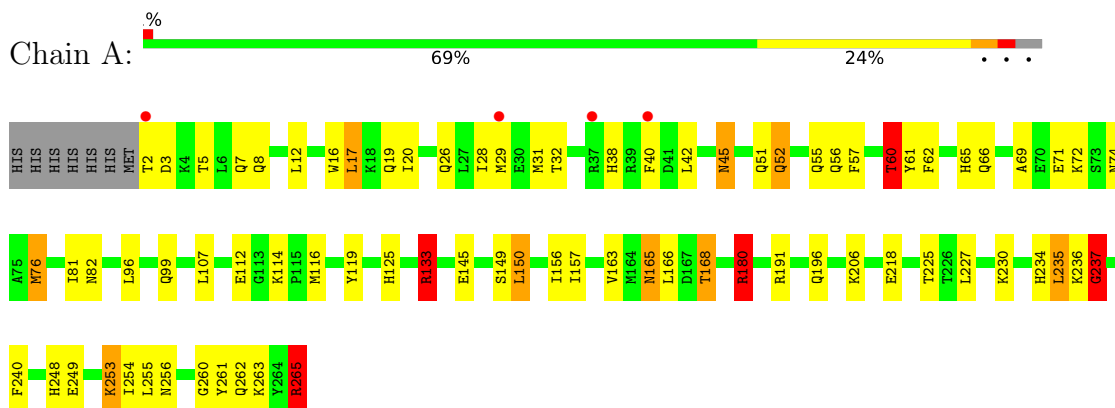
- Molecule 6 is water.

Mol	Chain	Residues	Atoms		ZeroOcc	AltConf
6	A	105	Total	O	0	0
			105	105		
6	B	113	Total	O	0	0
			113	113		

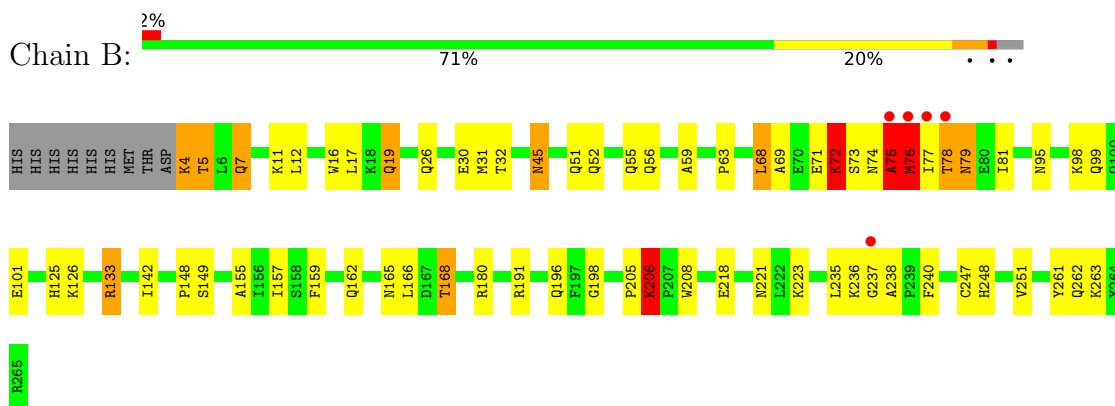
3 Residue-property plots [i](#)

These plots are drawn for all protein, RNA, DNA and oligosaccharide chains in the entry. The first graphic for a chain summarises the proportions of the various outlier classes displayed in the second graphic. The second graphic shows the sequence view annotated by issues in geometry and electron density. Residues are color-coded according to the number of geometric quality criteria for which they contain at least one outlier: green = 0, yellow = 1, orange = 2 and red = 3 or more. A red dot above a residue indicates a poor fit to the electron density ($RSRZ > 2$). Stretches of 2 or more consecutive residues without any outlier are shown as a green connector. Residues present in the sample, but not in the model, are shown in grey.

- Molecule 1: Inositol monophosphatase family protein



- Molecule 1: Inositol monophosphatase family protein



4 Data and refinement statistics

Property	Value	Source
Space group	P 21 2 21	Depositor
Cell constants a, b, c, α , β , γ	60.14Å 62.82Å 141.58Å 90.00° 90.00° 90.00°	Depositor
Resolution (Å)	19.59 – 2.04 19.59 – 2.04	Depositor EDS
% Data completeness (in resolution range)	99.8 (19.59-2.04) 100.0 (19.59-2.04)	Depositor EDS
R_{merge}	(Not available)	Depositor
R_{sym}	0.11	Depositor
$\langle I/\sigma(I) \rangle$ ¹	2.96 (at 2.04Å)	Xtrriage
Refinement program	REFMAC	Depositor
R, R_{free}	0.184 , 0.248 0.184 , 0.248	Depositor DCC
R_{free} test set	1753 reflections (5.02%)	wwPDB-VP
Wilson B-factor (Å ²)	20.9	Xtrriage
Anisotropy	0.062	Xtrriage
Bulk solvent k_{sol} (e/Å ³), B_{sol} (Å ²)	0.37 , 44.6	EDS
L-test for twinning ²	$\langle L \rangle = 0.49$, $\langle L^2 \rangle = 0.32$	Xtrriage
Estimated twinning fraction	0.025 for k,h,-l	Xtrriage
F_o, F_c correlation	0.95	EDS
Total number of atoms	4519	wwPDB-VP
Average B, all atoms (Å ²)	22.0	wwPDB-VP

Xtrriage's analysis on translational NCS is as follows: *The largest off-origin peak in the Patterson function is 7.30% of the height of the origin peak. No significant pseudotranslation is detected.*

¹Intensities estimated from amplitudes.

²Theoretical values of $\langle |L| \rangle$, $\langle L^2 \rangle$ for acentric reflections are 0.5, 0.333 respectively for untwinned datasets, and 0.375, 0.2 for perfectly twinned datasets.

5 Model quality [i](#)

5.1 Standard geometry [i](#)

Bond lengths and bond angles in the following residue types are not validated in this section: GOL, PO4, MG, PG4

The Z score for a bond length (or angle) is the number of standard deviations the observed value is removed from the expected value. A bond length (or angle) with $|Z| > 5$ is considered an outlier worth inspection. RMSZ is the root-mean-square of all Z scores of the bond lengths (or angles).

Mol	Chain	Bond lengths		Bond angles	
		RMSZ	# Z >5	RMSZ	# Z >5
1	A	0.94	1/2168 (0.0%)	1.17	11/2930 (0.4%)
1	B	0.87	1/2166 (0.0%)	1.16	12/2928 (0.4%)
All	All	0.90	2/4334 (0.0%)	1.16	23/5858 (0.4%)

Chiral center outliers are detected by calculating the chiral volume of a chiral center and verifying if the center is modelled as a planar moiety or with the opposite hand. A planarity outlier is detected by checking planarity of atoms in a peptide group, atoms in a mainchain group or atoms of a sidechain that are expected to be planar.

Mol	Chain	#Chirality outliers	#Planarity outliers
1	A	0	1
1	B	0	3
All	All	0	4

All (2) bond length outliers are listed below:

Mol	Chain	Res	Type	Atoms	Z	Observed(Å)	Ideal(Å)
1	A	180	ARG	CD-NE	-5.17	1.37	1.46
1	B	180	ARG	CD-NE	-5.02	1.38	1.46

All (23) bond angle outliers are listed below:

Mol	Chain	Res	Type	Atoms	Z	Observed(°)	Ideal(°)
1	A	180	ARG	NE-CZ-NH2	-19.70	110.45	120.30
1	B	180	ARG	NE-CZ-NH2	-17.27	111.66	120.30
1	A	133	ARG	NE-CZ-NH2	-16.45	112.08	120.30
1	B	133	ARG	NE-CZ-NH1	16.01	128.30	120.30
1	B	133	ARG	NE-CZ-NH2	-15.82	112.39	120.30
1	B	180	ARG	NE-CZ-NH1	15.79	128.19	120.30
1	A	180	ARG	NE-CZ-NH1	15.77	128.18	120.30

Continued on next page...

Continued from previous page...

Mol	Chain	Res	Type	Atoms	Z	Observed(°)	Ideal(°)
1	A	133	ARG	NE-CZ-NH1	14.68	127.64	120.30
1	B	76	MET	N-CA-C	-8.60	87.77	111.00
1	A	180	ARG	CD-NE-CZ	7.79	134.50	123.60
1	A	180	ARG	CG-CD-NE	-6.71	97.71	111.80
1	B	180	ARG	CG-CD-NE	-6.47	98.22	111.80
1	A	133	ARG	CD-NE-CZ	6.03	132.04	123.60
1	B	133	ARG	CD-NE-CZ	5.85	131.79	123.60
1	B	180	ARG	CD-NE-CZ	5.76	131.66	123.60
1	B	206	LYS	CD-CE-NZ	-5.61	98.79	111.70
1	A	265	ARG	NE-CZ-NH1	5.47	123.04	120.30
1	B	68	LEU	CA-CB-CG	5.34	127.58	115.30
1	A	150	LEU	CA-CB-CG	5.31	127.52	115.30
1	B	236	LYS	C-N-CA	-5.29	111.20	122.30
1	A	60	THR	N-CA-CB	-5.21	100.40	110.30
1	A	133	ARG	CG-CD-NE	-5.01	101.28	111.80
1	B	72	LYS	CB-CA-C	-5.01	100.39	110.40

There are no chirality outliers.

All (4) planarity outliers are listed below:

Mol	Chain	Res	Type	Group
1	A	237	GLY	Peptide
1	B	237	GLY	Peptide
1	B	75	ALA	Peptide
1	B	78	THR	Peptide

5.2 Too-close contacts [\(i\)](#)

In the following table, the Non-H and H(model) columns list the number of non-hydrogen atoms and hydrogen atoms in the chain respectively. The H(added) column lists the number of hydrogen atoms added and optimized by MolProbity. The Clashes column lists the number of clashes within the asymmetric unit, whereas Symm-Clashes lists symmetry-related clashes.

Mol	Chain	Non-H	H(model)	H(added)	Clashes	Symm-Clashes
1	A	2122	0	2113	71	1
1	B	2114	0	2115	55	0
2	A	5	0	0	0	0
2	B	5	0	0	0	0
3	A	2	0	0	0	0
3	B	2	0	0	0	0
4	A	12	0	16	0	0

Continued on next page...

Continued from previous page...

Mol	Chain	Non-H	H(model)	H(added)	Clashes	Symm-Clashes
4	B	18	0	24	0	0
5	A	21	0	25	11	0
6	A	105	0	0	9	0
6	B	113	0	0	8	0
All	All	4519	0	4293	124	1

The all-atom clashscore is defined as the number of clashes found per 1000 atoms (including hydrogen atoms). The all-atom clashscore for this structure is 14.

All (124) close contacts within the same asymmetric unit are listed below, sorted by their clash magnitude.

Atom-1	Atom-2	Interatomic distance (Å)	Clash overlap (Å)
1:A:165:ASN:HD22	1:A:168:THR:HG22	1.23	1.03
1:A:165:ASN:ND2	1:A:168:THR:HG22	1.73	1.02
1:B:32:THR:HG23	6:B:509:HOH:O	1.59	0.99
1:A:60:THR:HG22	1:A:61:TYR:CE2	1.98	0.99
1:B:78:THR:HB	1:B:79:ASN:CB	1.98	0.94
1:B:51:GLN:HE22	1:B:71:GLU:H	1.05	0.93
1:A:5:THR:H	1:A:8:GLN:HE21	1.18	0.92
1:A:165:ASN:HD22	1:A:168:THR:CG2	1.84	0.90
1:A:51:GLN:HE22	1:A:71:GLU:H	1.17	0.90
1:B:133:ARG:NH2	1:B:218:GLU:OE2	2.08	0.87
1:B:78:THR:O	1:B:81:ILE:HD11	1.75	0.86
1:A:125:HIS:HD2	6:A:476:HOH:O	1.60	0.85
1:A:168:THR:HG21	1:A:261:TYR:HA	1.59	0.84
1:A:66:GLN:OE1	1:A:81:ILE:HD13	1.79	0.82
1:A:165:ASN:CG	6:A:458:HOH:O	2.20	0.80
1:A:191:ARG:HH11	1:B:99:GLN:HE22	1.27	0.80
1:A:57:PHE:O	1:A:61:TYR:HD2	1.65	0.78
1:B:206:LYS:HD3	1:B:208:TRP:CZ2	2.21	0.75
1:A:99:GLN:HE22	1:B:191:ARG:HH11	1.33	0.73
1:A:165:ASN:ND2	1:A:168:THR:CG2	2.46	0.73
5:A:308:PG4:H22	6:A:505:HOH:O	1.90	0.72
1:A:60:THR:HG22	1:A:61:TYR:CD2	2.24	0.71
1:A:165:ASN:HB2	6:A:458:HOH:O	1.89	0.71
1:B:45:ASN:H	1:B:45:ASN:HD22	1.37	0.71
1:A:5:THR:H	1:A:8:GLN:NE2	1.88	0.71
1:B:148:PRO:HD2	6:B:511:HOH:O	1.90	0.71
1:A:133:ARG:NH2	1:A:218:GLU:OE2	2.26	0.68
1:A:31:MET:HA	1:A:45:ASN:HD21	1.58	0.67
1:A:165:ASN:CB	6:A:458:HOH:O	2.43	0.67

Continued on next page...

Continued from previous page...

Atom-1	Atom-2	Interatomic distance (Å)	Clash overlap (Å)
1:B:32:THR:H	1:B:45:ASN:ND2	1.93	0.66
1:B:76:MET:CB	1:B:77:ILE:HA	2.26	0.65
1:B:262:GLN:HG2	6:B:473:HOH:O	1.97	0.64
1:A:60:THR:CG2	1:A:61:TYR:CE2	2.79	0.63
1:B:51:GLN:NE2	1:B:71:GLU:H	1.88	0.62
1:B:69:ALA:H	1:B:74:ASN:HD21	1.46	0.62
1:A:57:PHE:O	1:A:61:TYR:CD2	2.51	0.61
1:A:5:THR:N	1:A:8:GLN:HE21	1.94	0.61
1:B:74:ASN:C	1:B:75:ALA:O	2.36	0.60
1:A:66:GLN:OE1	1:A:81:ILE:CD1	2.49	0.60
1:B:76:MET:HB2	1:B:77:ILE:HA	1.83	0.60
5:A:308:PG4:H31	1:B:98:LYS:NZ	2.16	0.59
1:B:51:GLN:HE22	1:B:71:GLU:N	1.89	0.59
1:A:82:ASN:HD22	1:A:112:GLU:HG2	1.67	0.59
1:A:55:GLN:NE2	6:A:441:HOH:O	2.36	0.59
1:B:26[B]:GLN:NE2	1:B:30:GLU:OE1	2.37	0.58
1:B:81:ILE:HD12	1:B:81:ILE:H	1.68	0.58
1:B:16:TRP:O	1:B:19:GLN:HG2	2.05	0.57
1:A:114:LYS:HE3	1:A:116:MET:CE	2.35	0.56
1:B:133:ARG:HH22	1:B:218:GLU:CD	2.09	0.56
1:A:32:THR:HG22	1:A:45:ASN:HB3	1.87	0.55
1:A:260:GLY:HA3	5:A:306:PG4:H52	1.89	0.54
1:A:69:ALA:H	1:A:74:ASN:HD21	1.56	0.53
1:A:114:LYS:HE3	1:A:116:MET:HE2	1.89	0.53
5:A:308:PG4:H31	1:B:98:LYS:HZ2	1.73	0.53
1:A:60:THR:HG22	1:A:61:TYR:HE2	1.65	0.53
1:A:256:ASN:OD1	5:A:306:PG4:H31	2.08	0.53
1:A:55:GLN:HG2	6:A:467:HOH:O	2.09	0.52
1:B:168:THR:HG21	1:B:261:TYR:HA	1.90	0.52
1:A:31:MET:HA	1:A:45:ASN:ND2	2.24	0.52
1:A:99:GLN:NE2	1:B:191:ARG:HH11	2.05	0.52
1:A:263:LYS:HE3	6:A:487:HOH:O	2.09	0.52
1:A:191:ARG:HH11	1:B:99:GLN:NE2	2.02	0.52
1:B:76:MET:HB2	1:B:77:ILE:CA	2.40	0.52
1:A:38:HIS:CE1	1:A:40:PHE:HB2	2.45	0.51
1:A:196:GLN:HB3	1:B:99:GLN:HE21	1.74	0.51
1:A:227:LEU:HD22	1:A:255:LEU:HD13	1.94	0.50
1:B:7:GLN:H	1:B:7:GLN:CD	2.14	0.50
1:B:75:ALA:O	1:B:76:MET:SD	2.70	0.50
1:A:99:GLN:HE21	1:B:196:GLN:HB3	1.76	0.50
1:A:260:GLY:HA3	5:A:306:PG4:H32	1.94	0.50

Continued on next page...

Continued from previous page...

Atom-1	Atom-2	Interatomic distance (Å)	Clash overlap (Å)
1:B:31:MET:HA	1:B:45:ASN:HD21	1.77	0.50
1:A:45:ASN:HD22	1:A:45:ASN:H	1.58	0.49
1:B:45:ASN:H	1:B:45:ASN:ND2	2.08	0.49
1:A:38:HIS:HE1	1:A:40:PHE:HB2	1.78	0.49
1:A:62:PHE:HB3	1:A:65:HIS:CG	2.47	0.49
1:A:32:THR:CG2	1:A:45:ASN:HB3	2.43	0.48
1:B:248:HIS:HD2	6:B:447:HOH:O	1.96	0.48
1:A:32:THR:H	1:A:45:ASN:ND2	2.11	0.48
1:B:4:LYS:HE2	1:B:4:LYS:HA	1.95	0.48
1:A:61:TYR:CD2	1:A:61:TYR:N	2.81	0.47
1:A:165:ASN:ND2	1:A:265:ARG:NH2	2.61	0.47
1:B:223:LYS:HE2	6:B:448:HOH:O	2.14	0.47
1:A:72:LYS:HZ3	1:A:76:MET:CE	2.27	0.47
5:A:305:PG4:H51	6:A:479:HOH:O	2.14	0.47
1:B:4:LYS:NZ	1:B:5:THR:HG23	2.30	0.46
1:B:247:CYS:O	1:B:251:VAL:HG23	2.14	0.46
1:B:59:ALA:O	1:B:63:PRO:HG3	2.14	0.46
1:A:56:GLN:O	1:A:60:THR:HB	2.15	0.46
1:A:150:LEU:HD23	5:A:308:PG4:H21	1.97	0.46
1:A:234:HIS:CD2	1:A:235:LEU:HD13	2.51	0.46
1:B:125:HIS:HE1	6:B:502:HOH:O	1.99	0.45
1:A:16:TRP:O	1:A:19:GLN:HG3	2.16	0.45
5:A:308:PG4:H42	6:B:467:HOH:O	2.17	0.45
5:A:306:PG4:H52	5:A:306:PG4:H32	1.68	0.45
1:B:45:ASN:HD22	1:B:45:ASN:N	2.10	0.45
1:B:95:ASN:HB3	1:B:101:GLU:O	2.17	0.44
1:B:165:ASN:HD21	1:B:168:THR:CG2	2.29	0.44
1:A:17:LEU:O	1:A:20:ILE:HG22	2.18	0.44
1:A:253:LYS:HG3	1:A:254:ILE:N	2.33	0.44
1:A:28:ILE:HD13	1:A:96:LEU:HD11	1.99	0.44
1:A:107:LEU:HB2	1:A:119:TYR:HB2	2.00	0.43
1:B:78:THR:CB	1:B:79:ASN:CB	2.86	0.43
1:A:2:THR:O	1:A:3:ASP:HB2	2.17	0.43
1:A:133:ARG:HH22	1:A:218:GLU:CD	2.17	0.43
1:A:26:GLN:HA	1:A:29:MET:HE3	2.01	0.42
1:A:72:LYS:NZ	1:A:74:ASN:ND2	2.68	0.42
1:A:52:GLN:HA	1:A:55:GLN:HE21	1.83	0.42
1:B:45:ASN:ND2	1:B:45:ASN:N	2.65	0.42
1:B:162:GLN:O	1:B:263:LYS:NZ	2.50	0.42
1:B:205:PRO:HD2	1:B:238:ALA:O	2.20	0.42
1:A:157:ILE:HD13	1:A:157:ILE:HG21	1.88	0.41

Continued on next page...

Continued from previous page...

Atom-1	Atom-2	Interatomic distance (Å)	Clash overlap (Å)
1:A:168:THR:CG2	1:A:261:TYR:HA	2.42	0.41
1:B:69:ALA:H	1:B:74:ASN:ND2	2.16	0.41
1:A:262:GLN:CG	5:A:306:PG4:H62	2.51	0.41
1:B:55:GLN:HE22	1:B:72:LYS:HD3	1.86	0.41
1:B:32:THR:CG2	6:B:509:HOH:O	2.38	0.41
1:B:51:GLN:OE1	1:B:72:LYS:HG3	2.21	0.41
1:B:157:ILE:HD12	1:B:159:PHE:CE2	2.56	0.41
1:A:225:THR:OG1	1:A:248:HIS:HE1	2.04	0.41
1:B:11:LYS:HB3	1:B:11:LYS:HE3	1.78	0.41
1:B:155:ALA:HB1	1:B:198:GLY:HA3	2.02	0.41
1:A:236:LYS:O	1:A:237:GLY:C	2.58	0.40
1:A:69:ALA:H	1:A:74:ASN:ND2	2.19	0.40
1:A:156:ILE:HG21	1:A:180:ARG:HB2	2.04	0.40

All (1) symmetry-related close contacts are listed below. The label for Atom-2 includes the symmetry operator and encoded unit-cell translations to be applied.

Atom-1	Atom-2	Interatomic distance (Å)	Clash overlap (Å)
1:A:61:TYR:OH	1:A:145:GLU:OE2[3_555]	1.95	0.25

5.3 Torsion angles [i](#)

5.3.1 Protein backbone [i](#)

In the following table, the Percentiles column shows the percent Ramachandran outliers of the chain as a percentile score with respect to all X-ray entries followed by that with respect to entries of similar resolution.

The Analysed column shows the number of residues for which the backbone conformation was analysed, and the total number of residues.

Mol	Chain	Analysed	Favoured	Allowed	Outliers	Percentiles	
1	A	263/271 (97%)	257 (98%)	5 (2%)	1 (0%)	34	24
1	B	262/271 (97%)	253 (97%)	7 (3%)	2 (1%)	19	10
All	All	525/542 (97%)	510 (97%)	12 (2%)	3 (1%)	25	15

All (3) Ramachandran outliers are listed below:

Mol	Chain	Res	Type
1	B	79	ASN
1	B	75	ALA
1	A	237	GLY

5.3.2 Protein sidechains [i](#)

In the following table, the Percentiles column shows the percent sidechain outliers of the chain as a percentile score with respect to all X-ray entries followed by that with respect to entries of similar resolution.

The Analysed column shows the number of residues for which the sidechain conformation was analysed, and the total number of residues.

Mol	Chain	Analysed	Rotameric	Outliers	Percentiles
1	A	228/238 (96%)	206 (90%)	22 (10%)	8 3
1	B	229/238 (96%)	207 (90%)	22 (10%)	8 3
All	All	457/476 (96%)	413 (90%)	44 (10%)	8 3

All (44) residues with a non-rotameric sidechain are listed below:

Mol	Chain	Res	Type
1	A	7	GLN
1	A	12	LEU
1	A	17	LEU
1	A	42	LEU
1	A	45	ASN
1	A	52	GLN
1	A	60	THR
1	A	76	MET
1	A	133	ARG
1	A	149	SER
1	A	163	VAL
1	A	165	ASN
1	A	166	LEU
1	A	168	THR
1	A	180	ARG
1	A	206	LYS
1	A	230	LYS
1	A	235	LEU
1	A	240	PHE
1	A	249	GLU
1	A	253	LYS

Continued on next page...

Continued from previous page...

Mol	Chain	Res	Type
1	A	265	ARG
1	B	4	LYS
1	B	5	THR
1	B	7	GLN
1	B	12	LEU
1	B	17	LEU
1	B	19	GLN
1	B	45	ASN
1	B	52	GLN
1	B	56	GLN
1	B	68	LEU
1	B	72	LYS
1	B	73	SER
1	B	76	MET
1	B	126	LYS
1	B	142	ILE
1	B	149	SER
1	B	166	LEU
1	B	168	THR
1	B	206	LYS
1	B	221	ASN
1	B	235	LEU
1	B	240	PHE

Sometimes sidechains can be flipped to improve hydrogen bonding and reduce clashes. All (23) such sidechains are listed below:

Mol	Chain	Res	Type
1	A	8	GLN
1	A	45	ASN
1	A	51	GLN
1	A	53	GLN
1	A	55	GLN
1	A	74	ASN
1	A	82	ASN
1	A	99	GLN
1	A	125	HIS
1	A	165	ASN
1	A	204	ASN
1	A	248	HIS
1	B	8	GLN
1	B	19	GLN
1	B	45	ASN

Continued on next page...

Continued from previous page...

Mol	Chain	Res	Type
1	B	51	GLN
1	B	53	GLN
1	B	74	ASN
1	B	82	ASN
1	B	99	GLN
1	B	125	HIS
1	B	204	ASN
1	B	248	HIS

5.3.3 RNA [i](#)

There are no RNA molecules in this entry.

5.4 Non-standard residues in protein, DNA, RNA chains [i](#)

There are no non-standard protein/DNA/RNA residues in this entry.

5.5 Carbohydrates [i](#)

There are no monosaccharides in this entry.

5.6 Ligand geometry [i](#)

Of 14 ligands modelled in this entry, 4 are monoatomic - leaving 10 for Mogul analysis.

In the following table, the Counts columns list the number of bonds (or angles) for which Mogul statistics could be retrieved, the number of bonds (or angles) that are observed in the model and the number of bonds (or angles) that are defined in the Chemical Component Dictionary. The Link column lists molecule types, if any, to which the group is linked. The Z score for a bond length (or angle) is the number of standard deviations the observed value is removed from the expected value. A bond length (or angle) with $|Z| > 2$ is considered an outlier worth inspection. RMSZ is the root-mean-square of all Z scores of the bond lengths (or angles).

Mol	Type	Chain	Res	Link	Bond lengths			Bond angles		
					Counts	RMSZ	$\# Z > 2$	Counts	RMSZ	$\# Z > 2$
4	GOL	A	307	-	5,5,5	0.27	0	5,5,5	0.48	0
5	PG4	A	308	-	6,6,12	1.32	0	5,5,11	1.65	1 (20%)
4	GOL	A	303	-	5,5,5	0.17	0	5,5,5	1.21	0
2	PO4	B	302	3	4,4,4	1.34	1 (25%)	6,6,6	0.98	0
2	PO4	A	301	3	4,4,4	0.91	0	6,6,6	1.42	1 (16%)

Mol	Type	Chain	Res	Link	Bond lengths			Bond angles		
					Counts	RMSZ	# Z > 2	Counts	RMSZ	# Z > 2
5	PG4	A	305	-	6,6,12	0.78	0	5,5,11	0.78	0
5	PG4	A	306	-	6,6,12	0.64	0	5,5,11	0.52	0
4	GOL	B	303	-	5,5,5	0.39	0	5,5,5	1.72	1 (20%)
4	GOL	B	306	-	5,5,5	0.81	0	5,5,5	0.74	0
4	GOL	B	305	-	5,5,5	0.46	0	5,5,5	0.48	0

In the following table, the Chirals column lists the number of chiral outliers, the number of chiral centers analysed, the number of these observed in the model and the number defined in the Chemical Component Dictionary. Similar counts are reported in the Torsion and Rings columns. '-' means no outliers of that kind were identified.

Mol	Type	Chain	Res	Link	Chirals	Torsions	Rings
4	GOL	A	307	-	-	4/4/4/4	-
5	PG4	A	308	-	-	4/4/4/10	-
4	GOL	A	303	-	-	2/4/4/4	-
5	PG4	A	305	-	-	2/4/4/10	-
5	PG4	A	306	-	-	3/4/4/10	-
4	GOL	B	303	-	-	2/4/4/4	-
4	GOL	B	306	-	-	4/4/4/4	-
4	GOL	B	305	-	-	4/4/4/4	-

All (1) bond length outliers are listed below:

Mol	Chain	Res	Type	Atoms	Z	Observed(Å)	Ideal(Å)
2	B	302	PO4	P-O4	2.27	1.61	1.54

All (3) bond angle outliers are listed below:

Mol	Chain	Res	Type	Atoms	Z	Observed(°)	Ideal(°)
4	B	303	GOL	C3-C2-C1	-3.30	98.86	111.70
2	A	301	PO4	O4-P-O3	2.65	116.47	107.97
5	A	308	PG4	O2-C3-C4	2.23	119.87	110.07

There are no chirality outliers.

All (25) torsion outliers are listed below:

Mol	Chain	Res	Type	Atoms
4	A	307	GOL	O1-C1-C2-C3
4	A	307	GOL	C1-C2-C3-O3

Continued on next page...

Continued from previous page...

Mol	Chain	Res	Type	Atoms
4	B	303	GOL	O1-C1-C2-C3
4	B	306	GOL	C1-C2-C3-O3
5	A	306	PG4	C3-C4-O3-C5
4	A	307	GOL	O1-C1-C2-O2
4	A	307	GOL	O2-C2-C3-O3
4	B	303	GOL	O1-C1-C2-O2
5	A	305	PG4	O3-C5-C6-O4
5	A	308	PG4	O1-C1-C2-O2
5	A	308	PG4	O2-C3-C4-O3
4	A	303	GOL	C1-C2-C3-O3
4	B	305	GOL	C1-C2-C3-O3
4	B	306	GOL	O1-C1-C2-C3
4	B	306	GOL	O1-C1-C2-O2
4	B	306	GOL	O2-C2-C3-O3
4	B	305	GOL	O1-C1-C2-C3
5	A	305	PG4	C6-C5-O3-C4
4	B	305	GOL	O1-C1-C2-O2
5	A	306	PG4	O2-C3-C4-O3
5	A	308	PG4	C1-C2-O2-C3
5	A	308	PG4	C4-C3-O2-C2
4	A	303	GOL	O2-C2-C3-O3
4	B	305	GOL	O2-C2-C3-O3
5	A	306	PG4	O3-C5-C6-O4

There are no ring outliers.

3 monomers are involved in 11 short contacts:

Mol	Chain	Res	Type	Clashes	Symm-Clashes
5	A	308	PG4	5	0
5	A	305	PG4	1	0
5	A	306	PG4	5	0

5.7 Other polymers [i](#)

There are no such residues in this entry.

5.8 Polymer linkage issues [i](#)

There are no chain breaks in this entry.

6 Fit of model and data [i](#)

6.1 Protein, DNA and RNA chains [i](#)

In the following table, the column labelled ‘#RSRZ > 2’ contains the number (and percentage) of RSRZ outliers, followed by percent RSRZ outliers for the chain as percentile scores relative to all X-ray entries and entries of similar resolution. The OWAB column contains the minimum, median, 95th percentile and maximum values of the occupancy-weighted average B-factor per residue. The column labelled ‘Q < 0.9’ lists the number of (and percentage) of residues with an average occupancy less than 0.9.

Mol	Chain	Analysed	<RSRZ>	#RSRZ>2	OWAB(Å ²)	Q<0.9
1	A	264/271 (97%)	-0.16	4 (1%) 73 76	10, 19, 37, 57	0
1	B	262/271 (96%)	-0.13	5 (1%) 66 71	11, 20, 38, 73	0
All	All	526/542 (97%)	-0.15	9 (1%) 70 73	10, 19, 38, 73	0

All (9) RSRZ outliers are listed below:

Mol	Chain	Res	Type	RSRZ
1	B	77	ILE	4.0
1	A	2	THR	3.6
1	B	78	THR	3.3
1	B	75	ALA	2.4
1	A	37	ARG	2.3
1	A	40	PHE	2.3
1	B	237	GLY	2.3
1	A	29	MET	2.1
1	B	76	MET	2.0

6.2 Non-standard residues in protein, DNA, RNA chains [i](#)

There are no non-standard protein/DNA/RNA residues in this entry.

6.3 Carbohydrates [i](#)

There are no monosaccharides in this entry.

6.4 Ligands [i](#)

In the following table, the Atoms column lists the number of modelled atoms in the group and the number defined in the chemical component dictionary. The B-factors column lists the minimum,

median, 95th percentile and maximum values of B factors of atoms in the group. The column labelled 'Q< 0.9' lists the number of atoms with occupancy less than 0.9.

Mol	Type	Chain	Res	Atoms	RSCC	RSR	B-factors(Å ²)	Q<0.9
5	PG4	A	305	7/13	0.80	0.24	38,40,47,49	0
5	PG4	A	308	7/13	0.80	0.32	23,28,34,37	0
5	PG4	A	306	7/13	0.81	0.30	35,43,56,59	0
4	GOL	B	306	6/6	0.84	0.17	28,32,35,37	0
4	GOL	B	305	6/6	0.88	0.23	39,46,48,48	0
4	GOL	A	307	6/6	0.91	0.27	36,46,49,51	0
4	GOL	B	303	6/6	0.94	0.17	24,26,29,30	0
4	GOL	A	303	6/6	0.97	0.12	24,28,31,31	0
3	MG	B	301	1/1	0.98	0.06	12,12,12,12	0
3	MG	B	304	1/1	0.98	0.04	18,18,18,18	0
2	PO4	B	302	5/5	0.98	0.07	14,15,16,17	0
3	MG	A	302	1/1	0.98	0.08	20,20,20,20	0
3	MG	A	304	1/1	0.98	0.04	20,20,20,20	0
2	PO4	A	301	5/5	0.99	0.06	17,17,20,21	0

6.5 Other polymers [i](#)

There are no such residues in this entry.