



# Full wwPDB X-ray Structure Validation Report ⓘ

Jun 13, 2024 – 09:28 AM EDT

PDB ID : 4GJQ  
Title : Crystal structure of human GLTP bound with 12:0 monosulfatide (orthorhombic form;two subunits in asymmetric unit)  
Authors : Cabo-Bilbao, A.; Goni-de-Cerio, F.; Samygina, V.R.; Ochoa-Lizarralde, B.; Popov, A.N.; Malinina, L.  
Deposited on : 2012-08-10  
Resolution : 2.00 Å(reported)

This is a Full wwPDB X-ray Structure Validation Report for a publicly released PDB entry.

We welcome your comments at [validation@mail.wwpdb.org](mailto:validation@mail.wwpdb.org)

A user guide is available at

<https://www.wwpdb.org/validation/2017/XrayValidationReportHelp>

with specific help available everywhere you see the ⓘ symbol.

The types of validation reports are described at

<http://www.wwpdb.org/validation/2017/FAQs#types>.

---

The following versions of software and data (see [references ⓘ](#)) were used in the production of this report:

MolProbity : 4.02b-467  
Mogul : 2022.3.0, CSD as543be (2022)  
Xtriage (Phenix) : 1.20.1  
EDS : 2.36.2  
buster-report : 1.1.7 (2018)  
Percentile statistics : 20191225.v01 (using entries in the PDB archive December 25th 2019)  
Refmac : 5.8.0158  
CCP4 : 7.0.044 (Gargrove)  
Ideal geometry (proteins) : Engh & Huber (2001)  
Ideal geometry (DNA, RNA) : Parkinson et al. (1996)  
Validation Pipeline (wwPDB-VP) : 2.36.2

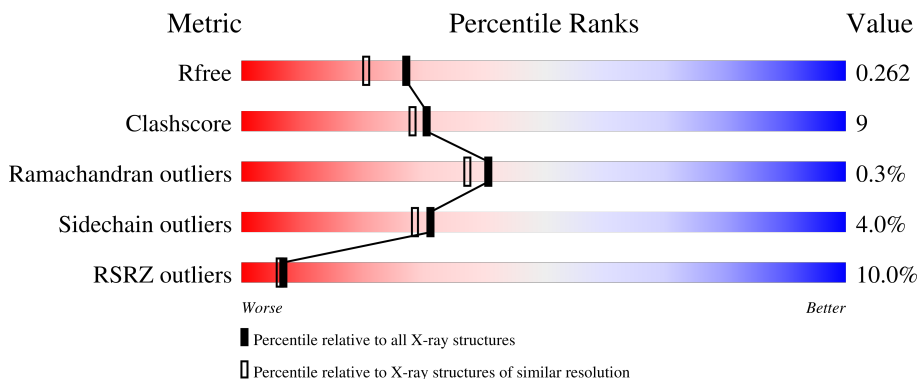
# 1 Overall quality at a glance

The following experimental techniques were used to determine the structure:

*X-RAY DIFFRACTION*

The reported resolution of this entry is 2.00 Å.

Percentile scores (ranging between 0-100) for global validation metrics of the entry are shown in the following graphic. The table shows the number of entries on which the scores are based.



Metric	Whole archive (#Entries)	Similar resolution (#Entries, resolution range(Å))
$R_{free}$	130704	8085 (2.00-2.00)
Clashscore	141614	9178 (2.00-2.00)
Ramachandran outliers	138981	9054 (2.00-2.00)
Sidechain outliers	138945	9053 (2.00-2.00)
RSRZ outliers	127900	7900 (2.00-2.00)

The table below summarises the geometric issues observed across the polymeric chains and their fit to the electron density. The red, orange, yellow and green segments of the lower bar indicate the fraction of residues that contain outliers for  $\geq 3$ , 2, 1 and 0 types of geometric quality criteria respectively. A grey segment represents the fraction of residues that are not modelled. The numeric value for each fraction is indicated below the corresponding segment, with a dot representing fractions  $\leq 5\%$ . The upper red bar (where present) indicates the fraction of residues that have poor fit to the electron density. The numeric value is given above the bar.

Mol	Chain	Length	Quality of chain
1	A	209	
1	B	209	

## 2 Entry composition [i](#)

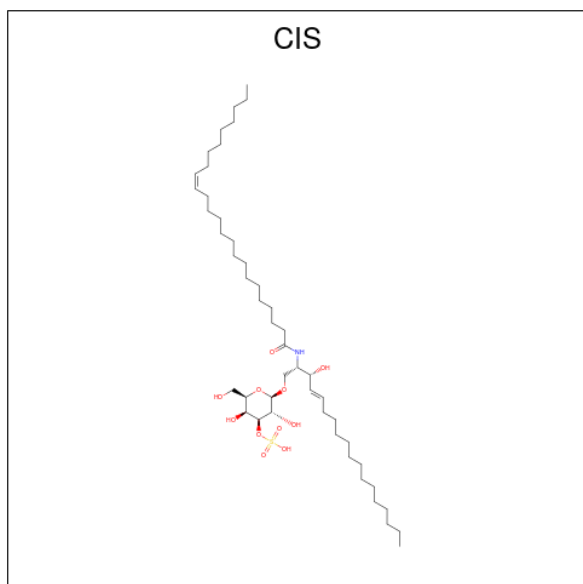
There are 4 unique types of molecules in this entry. The entry contains 3599 atoms, of which 0 are hydrogens and 0 are deuteriums.

In the tables below, the ZeroOcc column contains the number of atoms modelled with zero occupancy, the AltConf column contains the number of residues with at least one atom in alternate conformation and the Trace column contains the number of residues modelled with at most 2 atoms.

- Molecule 1 is a protein called Glycolipid transfer protein.

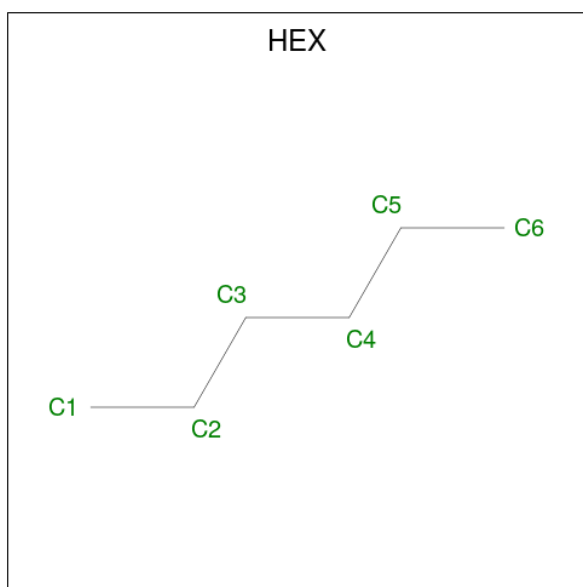
Mol	Chain	Residues	Atoms					ZeroOcc	AltConf	Trace
			Total	C	N	O	S			
1	A	198	Total	C	N	O	S	0	1	0
			1598	1044	258	288	8			
1	B	202	Total	C	N	O	S	0	3	0
			1630	1061	265	296	8			

- Molecule 2 is (15Z)-N-((1S,2R,3E)-2-HYDROXY-1-[(3-O-SULFO-BETA-D-GALACTOPYRANOSYL)OXY]METHYL)HEPTADEC-3-ENYL)TETRACOS-15-ENAMIDE (three-letter code: CIS) (formula: C<sub>48</sub>H<sub>91</sub>NO<sub>11</sub>S).



Mol	Chain	Residues	Atoms					ZeroOcc	AltConf
			Total	C	N	O	S		
2	A	1	Total	C	N	O	S	0	0
			49	36	1	11	1		
2	B	1	Total	C	N	O	S	0	0
			49	36	1	11	1		

- Molecule 3 is HEXANE (three-letter code: HEX) (formula: C<sub>6</sub>H<sub>14</sub>).



Mol	Chain	Residues	Atoms	ZeroOcc	AltConf
3	A	1	Total C 6 6	0	0

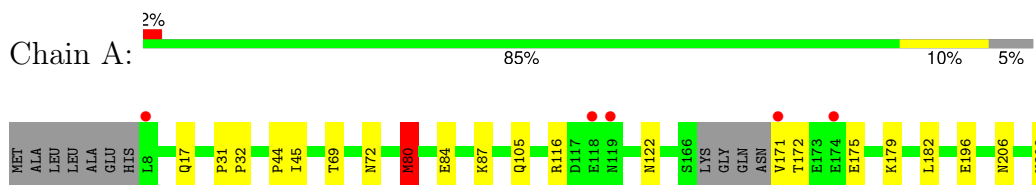
- Molecule 4 is water.

Mol	Chain	Residues	Atoms	ZeroOcc	AltConf
4	A	135	Total O 135 135	0	0
4	B	132	Total O 132 132	0	0

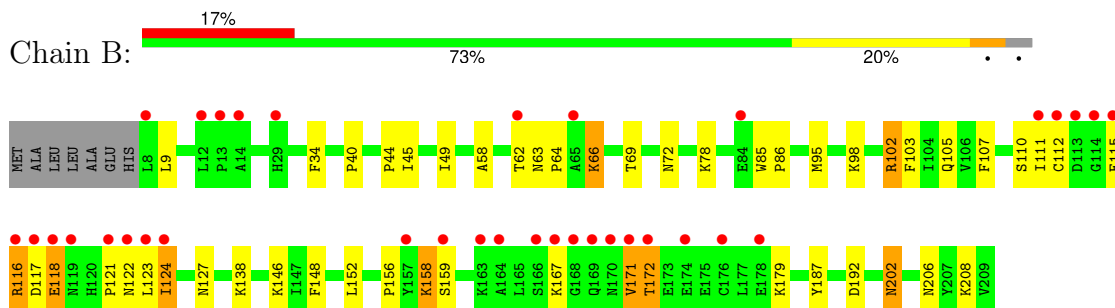
### 3 Residue-property plots [i](#)

These plots are drawn for all protein, RNA, DNA and oligosaccharide chains in the entry. The first graphic for a chain summarises the proportions of the various outlier classes displayed in the second graphic. The second graphic shows the sequence view annotated by issues in geometry and electron density. Residues are color-coded according to the number of geometric quality criteria for which they contain at least one outlier: green = 0, yellow = 1, orange = 2 and red = 3 or more. A red dot above a residue indicates a poor fit to the electron density ( $RSRZ > 2$ ). Stretches of 2 or more consecutive residues without any outlier are shown as a green connector. Residues present in the sample, but not in the model, are shown in grey.

- Molecule 1: Glycolipid transfer protein



- Molecule 1: Glycolipid transfer protein



## 4 Data and refinement statistics

Property	Value	Source
Space group	P 21 21 21	Depositor
Cell constants a, b, c, $\alpha$ , $\beta$ , $\gamma$	50.96Å 95.47Å 132.39Å 90.00° 90.00° 90.00°	Depositor
Resolution (Å)	15.00 – 2.00 15.00 – 2.00	Depositor EDS
% Data completeness (in resolution range)	98.3 (15.00-2.00) 98.3 (15.00-2.00)	Depositor EDS
$R_{merge}$	(Not available)	Depositor
$R_{sym}$	(Not available)	Depositor
$\langle I/\sigma(I) \rangle$ <sup>1</sup>	2.81 (at 2.00Å)	Xtrriage
Refinement program	REFMAC 5.2.0019	Depositor
R, $R_{free}$	0.217 , 0.260 0.220 , 0.262	Depositor DCC
$R_{free}$ test set	2209 reflections (5.06%)	wwPDB-VP
Wilson B-factor (Å <sup>2</sup> )	29.6	Xtrriage
Anisotropy	0.115	Xtrriage
Bulk solvent $k_{sol}$ (e/Å <sup>3</sup> ), $B_{sol}$ (Å <sup>2</sup> )	0.37 , 55.3	EDS
L-test for twinning <sup>2</sup>	$\langle  L  \rangle = 0.48$ , $\langle L^2 \rangle = 0.31$	Xtrriage
Estimated twinning fraction	No twinning to report.	Xtrriage
$F_o, F_c$ correlation	0.94	EDS
Total number of atoms	3599	wwPDB-VP
Average B, all atoms (Å <sup>2</sup> )	45.0	wwPDB-VP

Xtrriage's analysis on translational NCS is as follows: *The largest off-origin peak in the Patterson function is 5.08% of the height of the origin peak. No significant pseudotranslation is detected.*

<sup>1</sup>Intensities estimated from amplitudes.

<sup>2</sup>Theoretical values of  $\langle |L| \rangle$ ,  $\langle L^2 \rangle$  for acentric reflections are 0.5, 0.333 respectively for untwinned datasets, and 0.375, 0.2 for perfectly twinned datasets.

## 5 Model quality [i](#)

### 5.1 Standard geometry [i](#)

Bond lengths and bond angles in the following residue types are not validated in this section: CIS, HEX

The Z score for a bond length (or angle) is the number of standard deviations the observed value is removed from the expected value. A bond length (or angle) with  $|Z| > 5$  is considered an outlier worth inspection. RMSZ is the root-mean-square of all Z scores of the bond lengths (or angles).

Mol	Chain	Bond lengths		Bond angles	
		RMSZ	# Z  >5	RMSZ	# Z  >5
1	A	0.88	0/1636	0.81	2/2216 (0.1%)
1	B	0.89	0/1679	0.84	3/2274 (0.1%)
All	All	0.89	0/3315	0.82	5/4490 (0.1%)

Chiral center outliers are detected by calculating the chiral volume of a chiral center and verifying if the center is modelled as a planar moiety or with the opposite hand. A planarity outlier is detected by checking planarity of atoms in a peptide group, atoms in a mainchain group or atoms of a sidechain that are expected to be planar.

Mol	Chain	#Chirality outliers	#Planarity outliers
1	B	0	1

There are no bond length outliers.

All (5) bond angle outliers are listed below:

Mol	Chain	Res	Type	Atoms	Z	Observed( $^{\circ}$ )	Ideal( $^{\circ}$ )
1	B	124	ILE	CB-CA-C	-8.09	95.43	111.60
1	A	80	MET	CA-CB-CG	6.23	123.89	113.30
1	B	102	ARG	NE-CZ-NH2	6.21	123.41	120.30
1	B	102	ARG	NE-CZ-NH1	-5.59	117.50	120.30
1	A	80	MET	CB-CA-C	5.33	121.06	110.40

There are no chirality outliers.

All (1) planarity outliers are listed below:

Mol	Chain	Res	Type	Group
1	B	118	GLU	Peptide

## 5.2 Too-close contacts [i](#)

In the following table, the Non-H and H(model) columns list the number of non-hydrogen atoms and hydrogen atoms in the chain respectively. The H(added) column lists the number of hydrogen atoms added and optimized by MolProbity. The Clashes column lists the number of clashes within the asymmetric unit, whereas Symm-Clashes lists symmetry-related clashes.

Mol	Chain	Non-H	H(model)	H(added)	Clashes	Symm-Clashes
1	A	1598	0	1614	17	0
1	B	1630	0	1653	47	0
2	A	49	0	65	4	0
2	B	49	0	65	2	0
3	A	6	0	14	2	0
4	A	135	0	0	8	0
4	B	132	0	0	10	0
All	All	3599	0	3411	62	0

The all-atom clashscore is defined as the number of clashes found per 1000 atoms (including hydrogen atoms). The all-atom clashscore for this structure is 9.

All (62) close contacts within the same asymmetric unit are listed below, sorted by their clash magnitude.

Atom-1	Atom-2	Interatomic distance (Å)	Clash overlap (Å)
1:B:124:ILE:HG22	1:B:124:ILE:O	1.57	1.00
1:B:115:GLU:O	1:B:116:ARG:HB3	1.73	0.89
1:B:102:ARG:HH11	1:B:105:GLN:HE22	1.20	0.88
1:A:172:THR:HG23	4:A:456:HOH:O	1.76	0.86
1:B:158:LYS:HE2	1:B:159:SER:H	1.40	0.85
2:A:301:CIS:H142	1:B:45:ILE:HD11	1.60	0.81
1:A:87:LYS:NZ	4:A:530:HOH:O	1.82	0.81
1:B:156:PRO:O	4:B:916:HOH:O	2.05	0.75
1:B:124:ILE:O	1:B:124:ILE:CG2	2.29	0.72
1:B:118:GLU:HG2	1:B:121:PRO:HB3	1.74	0.70
1:A:80:MET:HE1	4:A:505:HOH:O	1.91	0.69
1:A:206:ASN:H	3:A:302:HEX:H32	1.58	0.67
1:B:124:ILE:HG23	1:B:127:ASN:HD22	1.62	0.65
1:B:102:ARG:HH11	1:B:105:GLN:NE2	1.94	0.64
1:B:158:LYS:HE2	1:B:159:SER:N	2.14	0.61
1:B:102:ARG:NH1	1:B:192:ASP:OD1	2.34	0.61
1:B:124:ILE:CG2	1:B:127:ASN:HB2	2.32	0.60
1:B:116:ARG:HG2	1:B:117:ASP:N	2.17	0.59
1:A:44:PRO:HG2	2:B:700:CIS:H91	1.84	0.58
1:B:107:PHE:CE1	1:B:124:ILE:HG21	2.40	0.56

*Continued on next page...*



*Continued from previous page...*

Atom-1	Atom-2	Interatomic distance (Å)	Clash overlap (Å)
1:B:34:PHE:CE2	1:B:49:ILE:HD12	2.40	0.56
1:B:208:LYS:NZ	4:B:914:HOH:O	2.36	0.56
1:B:118:GLU:HA	1:B:121:PRO:HA	1.88	0.55
1:A:206:ASN:N	3:A:302:HEX:H32	2.23	0.54
1:B:78:LYS:HG3	4:B:932:HOH:O	2.09	0.53
1:B:202:ASN:HB2	4:B:870:HOH:O	2.08	0.52
1:B:116:ARG:HD2	1:B:118:GLU:OE2	2.09	0.52
2:A:301:CIS:H151	1:B:148:PHE:HA	1.91	0.52
1:B:58:ALA:O	1:B:62:THR:HG23	2.10	0.52
1:B:146:LYS:HG3	4:B:926:HOH:O	2.09	0.52
1:B:9:LEU:HD22	1:B:187:TYR:HA	1.92	0.51
1:A:45:ILE:HD13	2:A:301:CIS:H251	1.92	0.51
1:A:209:VAL:HG23	1:B:40:PRO:HG2	1.92	0.50
1:B:85:TRP:CG	1:B:86:PRO:HA	2.48	0.49
1:B:66:LYS:NZ	4:B:838:HOH:O	2.13	0.48
1:B:102:ARG:NH1	1:B:105:GLN:HE22	1.99	0.48
1:B:171:VAL:HG23	1:B:172:THR:O	2.14	0.47
1:A:80:MET:CE	4:A:505:HOH:O	2.58	0.46
1:A:122:ASN:HB3	4:A:495:HOH:O	2.14	0.46
1:A:172:THR:O	1:A:175:GLU:HG3	2.16	0.46
2:A:301:CIS:H91	1:B:44:PRO:HG2	1.98	0.46
1:B:123:LEU:HD12	4:B:890:HOH:O	2.16	0.46
1:B:111:ILE:HG22	1:B:112:CYS:N	2.31	0.45
1:A:17:GLN:NE2	4:A:431:HOH:O	2.40	0.45
1:A:69:THR:H	1:A:72:ASN:HD22	1.65	0.44
1:B:206:ASN:ND2	4:B:815:HOH:O	2.43	0.44
1:B:103:PHE:CE1	2:B:700:CIS:H252	2.53	0.43
1:B:110:SER:HA	4:B:835:HOH:O	2.18	0.43
1:B:122:ASN:HB2	1:B:158:LYS:CG	2.49	0.43
1:A:31:PRO:HB2	1:A:32:PRO:HD3	2.01	0.43
1:B:138:LYS:HE2	1:B:206:ASN:ND2	2.33	0.43
1:B:63:ASN:O	1:B:64:PRO:C	2.57	0.42
1:A:209:VAL:HG23	1:B:40:PRO:CG	2.49	0.42
1:B:124:ILE:HG22	1:B:127:ASN:HB2	2.02	0.42
1:A:84:GLU:HG2	4:A:513:HOH:O	2.19	0.41
1:B:118:GLU:HA	1:B:121:PRO:CA	2.51	0.41
1:B:34:PHE:HE2	1:B:49:ILE:HD12	1.82	0.41
1:B:123:LEU:O	4:B:849:HOH:O	2.22	0.41
1:B:124:ILE:HG23	1:B:127:ASN:ND2	2.29	0.41
1:B:69:THR:HG23	1:B:72:ASN:ND2	2.36	0.41
1:A:105:GLN:NE2	4:A:442:HOH:O	2.51	0.40

*Continued on next page...*

Continued from previous page...

Atom-1	Atom-2	Interatomic distance (Å)	Clash overlap (Å)
1:B:95:MET:O	1:B:98:LYS:HG2	2.22	0.40

There are no symmetry-related clashes.

## 5.3 Torsion angles [i](#)

### 5.3.1 Protein backbone [i](#)

In the following table, the Percentiles column shows the percent Ramachandran outliers of the chain as a percentile score with respect to all X-ray entries followed by that with respect to entries of similar resolution.

The Analysed column shows the number of residues for which the backbone conformation was analysed, and the total number of residues.

Mol	Chain	Analysed	Favoured	Allowed	Outliers	Percentiles	
1	A	194/209 (93%)	190 (98%)	4 (2%)	0	100	100
1	B	202/209 (97%)	189 (94%)	12 (6%)	1 (0%)	29	23
All	All	396/418 (95%)	379 (96%)	16 (4%)	1 (0%)	41	37

All (1) Ramachandran outliers are listed below:

Mol	Chain	Res	Type
1	B	167	LYS

### 5.3.2 Protein sidechains [i](#)

In the following table, the Percentiles column shows the percent sidechain outliers of the chain as a percentile score with respect to all X-ray entries followed by that with respect to entries of similar resolution.

The Analysed column shows the number of residues for which the sidechain conformation was analysed, and the total number of residues.

Mol	Chain	Analysed	Rotameric	Outliers	Percentiles	
1	A	172/180 (96%)	166 (96%)	6 (4%)	36	35
1	B	177/180 (98%)	169 (96%)	8 (4%)	27	24
All	All	349/360 (97%)	335 (96%)	14 (4%)	31	29

All (14) residues with a non-rotameric sidechain are listed below:

Mol	Chain	Res	Type
1	A	80	MET
1	A	116	ARG
1	A	171	VAL
1	A	179	LYS
1	A	182	LEU
1	A	196	GLU
1	B	66	LYS
1	B	116	ARG
1	B	152	LEU
1	B	158	LYS
1	B	171	VAL
1	B	172	THR
1	B	179	LYS
1	B	202	ASN

Sometimes sidechains can be flipped to improve hydrogen bonding and reduce clashes. All (10) such sidechains are listed below:

Mol	Chain	Res	Type
1	A	17	GLN
1	A	72	ASN
1	A	120	HIS
1	A	127	ASN
1	B	105	GLN
1	B	120	HIS
1	B	127	ASN
1	B	186	ASN
1	B	202	ASN
1	B	206	ASN

### 5.3.3 RNA [i](#)

There are no RNA molecules in this entry.

## 5.4 Non-standard residues in protein, DNA, RNA chains [i](#)

There are no non-standard protein/DNA/RNA residues in this entry.

## 5.5 Carbohydrates [i](#)

There are no monosaccharides in this entry.

## 5.6 Ligand geometry [i](#)

3 ligands are modelled in this entry.

In the following table, the Counts columns list the number of bonds (or angles) for which Mogul statistics could be retrieved, the number of bonds (or angles) that are observed in the model and the number of bonds (or angles) that are defined in the Chemical Component Dictionary. The Link column lists molecule types, if any, to which the group is linked. The Z score for a bond length (or angle) is the number of standard deviations the observed value is removed from the expected value. A bond length (or angle) with  $|Z| > 2$  is considered an outlier worth inspection. RMSZ is the root-mean-square of all Z scores of the bond lengths (or angles).

Mol	Type	Chain	Res	Link	Bond lengths			Bond angles		
					Counts	RMSZ	# $ Z  > 2$	Counts	RMSZ	# $ Z  > 2$
3	HEX	A	302	-	5,5,5	0.43	0	4,4,4	0.07	0
2	CIS	A	301	-	48,49,61	0.74	1 (2%)	56,60,72	1.17	2 (3%)
2	CIS	B	700	-	48,49,61	0.70	1 (2%)	56,60,72	1.11	3 (5%)

In the following table, the Chirals column lists the number of chiral outliers, the number of chiral centers analysed, the number of these observed in the model and the number defined in the Chemical Component Dictionary. Similar counts are reported in the Torsion and Rings columns. '–' means no outliers of that kind were identified.

Mol	Type	Chain	Res	Link	Chirals	Torsions	Rings
3	HEX	A	302	-	-	1/3/3/3	-
2	CIS	A	301	-	-	15/46/66/78	0/1/1/1
2	CIS	B	700	-	-	9/46/66/78	0/1/1/1

All (2) bond length outliers are listed below:

Mol	Chain	Res	Type	Atoms	Z	Observed(Å)	Ideal(Å)
2	A	301	CIS	O-C43	-2.55	1.36	1.40
2	B	700	CIS	O5-C46	2.09	1.48	1.43

All (5) bond angle outliers are listed below:

Mol	Chain	Res	Type	Atoms	Z	Observed(°)	Ideal(°)
2	A	301	CIS	C2-C1-N	-4.06	102.78	109.66
2	B	700	CIS	O2-C18-C19	-3.35	115.95	122.02

*Continued on next page...*

*Continued from previous page...*

Mol	Chain	Res	Type	Atoms	Z	Observed(°)	Ideal(°)
2	B	700	CIS	C1-N-C18	-3.22	118.04	123.40
2	A	301	CIS	O10-S-O4	3.10	113.50	106.37
2	B	700	CIS	C-C1-N	-2.18	106.55	109.66

There are no chirality outliers.

All (25) torsion outliers are listed below:

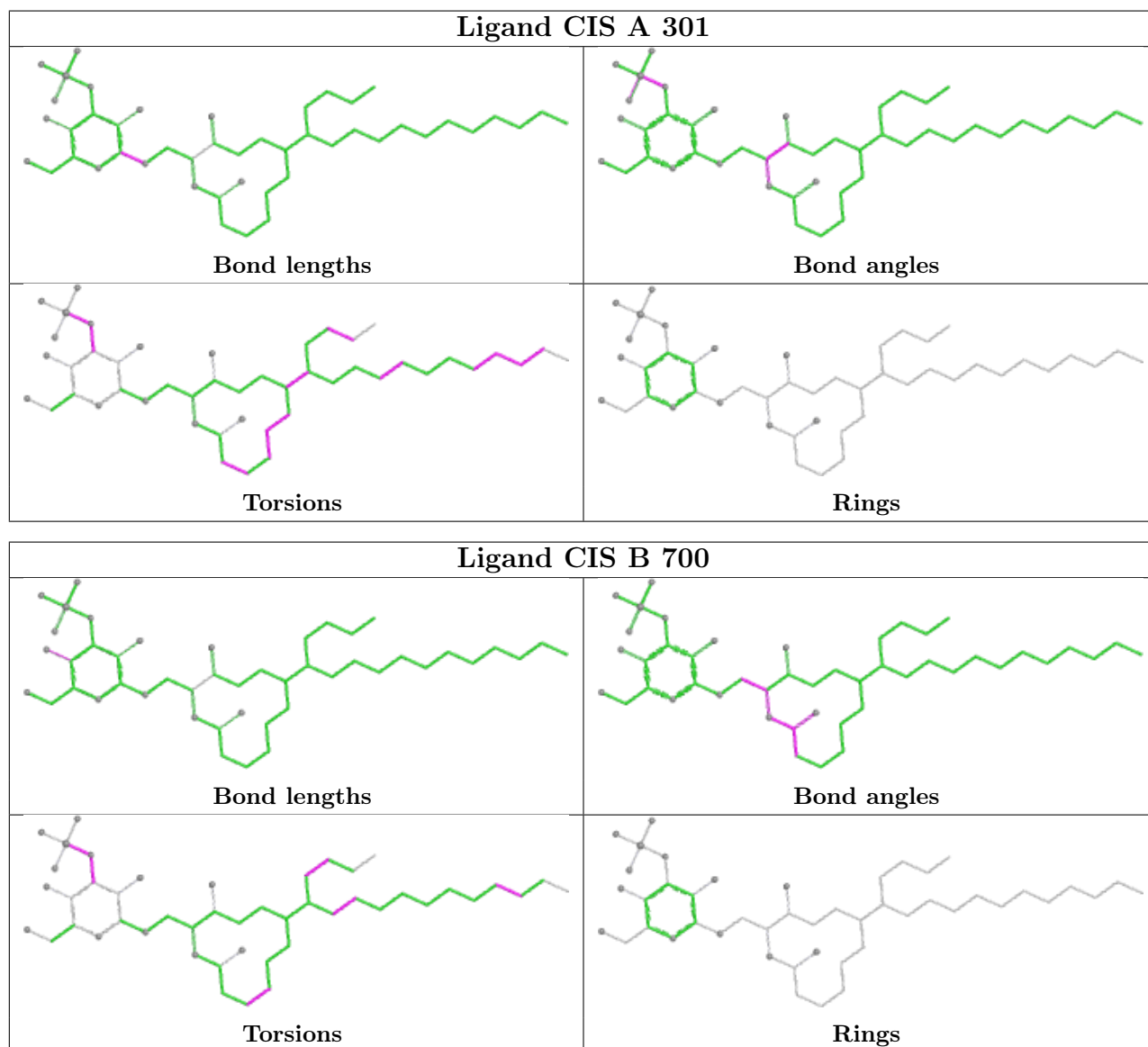
Mol	Chain	Res	Type	Atoms
2	A	301	CIS	C44-C45-O4-S
2	A	301	CIS	C46-C45-O4-S
2	B	700	CIS	C44-C45-O4-S
2	B	700	CIS	C46-C45-O4-S
2	B	700	CIS	C6-C7-C8-C9
2	A	301	CIS	C13-C14-C15-C16
2	A	301	CIS	C45-O4-S-O8
2	A	301	CIS	C20-C21-C22-C23
2	B	700	CIS	C13-C14-C15-C16
2	A	301	CIS	C12-C13-C14-C15
2	A	301	CIS	C21-C22-C23-C24
2	B	700	CIS	C25-C26-C27-C28
2	A	301	CIS	C4-C5-C6-C7
2	B	700	CIS	C19-C20-C21-C22
2	A	301	CIS	C45-O4-S-O10
2	A	301	CIS	C45-O4-S-O9
2	B	700	CIS	C45-O4-S-O10
2	A	301	CIS	C23-C24-C25-C26
3	A	302	HEX	C1-C2-C3-C4
2	A	301	CIS	C26-C27-C28-C29
2	B	700	CIS	C45-O4-S-O9
2	B	700	CIS	C45-O4-S-O8
2	A	301	CIS	C11-C10-C9-C8
2	A	301	CIS	C14-C15-C16-C17
2	A	301	CIS	C18-C19-C20-C21

There are no ring outliers.

3 monomers are involved in 8 short contacts:

Mol	Chain	Res	Type	Clashes	Symm-Clashes
3	A	302	HEX	2	0
2	A	301	CIS	4	0
2	B	700	CIS	2	0

The following is a two-dimensional graphical depiction of Mogul quality analysis of bond lengths, bond angles, torsion angles, and ring geometry for all instances of the Ligand of Interest. In addition, ligands with molecular weight > 250 and outliers as shown on the validation Tables will also be included. For torsion angles, if less than 5% of the Mogul distribution of torsion angles is within 10 degrees of the torsion angle in question, then that torsion angle is considered an outlier. Any bond that is central to one or more torsion angles identified as an outlier by Mogul will be highlighted in the graph. For rings, the root-mean-square deviation (RMSD) between the ring in question and similar rings identified by Mogul is calculated over all ring torsion angles. If the average RMSD is greater than 60 degrees and the minimal RMSD between the ring in question and any Mogul-identified rings is also greater than 60 degrees, then that ring is considered an outlier. The outliers are highlighted in purple. The color gray indicates Mogul did not find sufficient equivalents in the CSD to analyse the geometry.



## 5.7 Other polymers [i](#)

There are no such residues in this entry.

## 5.8 Polymer linkage issues [i](#)

There are no chain breaks in this entry.

## 6 Fit of model and data

### 6.1 Protein, DNA and RNA chains

In the following table, the column labelled ‘#RSRZ > 2’ contains the number (and percentage) of RSRZ outliers, followed by percent RSRZ outliers for the chain as percentile scores relative to all X-ray entries and entries of similar resolution. The OWAB column contains the minimum, median, 95<sup>th</sup> percentile and maximum values of the occupancy-weighted average B-factor per residue. The column labelled ‘Q < 0.9’ lists the number of (and percentage) of residues with an average occupancy less than 0.9.

Mol	Chain	Analysed	<RSRZ>	#RSRZ>2	OWAB(Å <sup>2</sup> )	Q<0.9
1	A	198/209 (94%)	-0.18	5 (2%) 57 56	19, 36, 67, 84	1 (0%)
1	B	202/209 (96%)	0.60	35 (17%) 1 1	20, 47, 103, 126	0
All	All	400/418 (95%)	0.21	40 (10%) 7 6	19, 39, 91, 126	1 (0%)

All (40) RSRZ outliers are listed below:

Mol	Chain	Res	Type	RSRZ
1	B	168	GLY	6.3
1	B	167	LYS	5.1
1	B	170	ASN	4.9
1	A	174	GLU	4.5
1	B	122	ASN	4.1
1	B	157	TYR	4.1
1	B	14	ALA	4.0
1	B	65	ALA	4.0
1	B	169	GLN	4.0
1	B	163	LYS	3.6
1	B	178	GLU	3.5
1	B	113	ASP	3.2
1	B	121	PRO	3.1
1	B	8	LEU	3.1
1	B	13	PRO	3.0
1	B	62	THR	2.9
1	B	111	ILE	2.8
1	B	114	GLY	2.8
1	B	84	GLU	2.8
1	B	118	GLU	2.8
1	B	119	ASN	2.7
1	B	112	CYS	2.7
1	B	123	LEU	2.5
1	A	8	LEU	2.5

*Continued on next page...*



*Continued from previous page...*

Mol	Chain	Res	Type	RSRZ
1	B	166	SER	2.4
1	B	172	THR	2.4
1	B	159	SER	2.4
1	B	176	CYS	2.3
1	B	12	LEU	2.3
1	B	116	ARG	2.2
1	B	117	ASP	2.2
1	B	29	HIS	2.2
1	B	174	GLU	2.2
1	A	118	GLU	2.1
1	B	164	ALA	2.1
1	A	171	VAL	2.1
1	B	115	GLU	2.1
1	B	124	ILE	2.1
1	A	119	ASN	2.0
1	B	171	VAL	2.0

## 6.2 Non-standard residues in protein, DNA, RNA chains [i](#)

There are no non-standard protein/DNA/RNA residues in this entry.

## 6.3 Carbohydrates [i](#)

There are no monosaccharides in this entry.

## 6.4 Ligands [i](#)

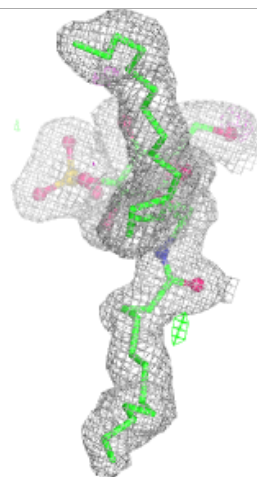
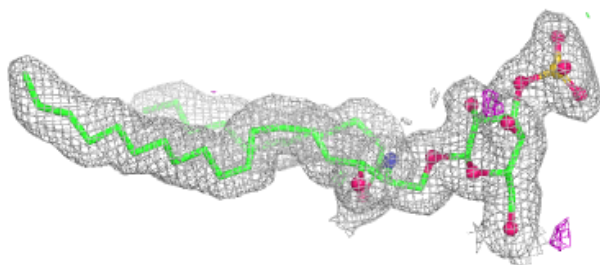
In the following table, the Atoms column lists the number of modelled atoms in the group and the number defined in the chemical component dictionary. The B-factors column lists the minimum, median, 95<sup>th</sup> percentile and maximum values of B factors of atoms in the group. The column labelled 'Q< 0.9' lists the number of atoms with occupancy less than 0.9.

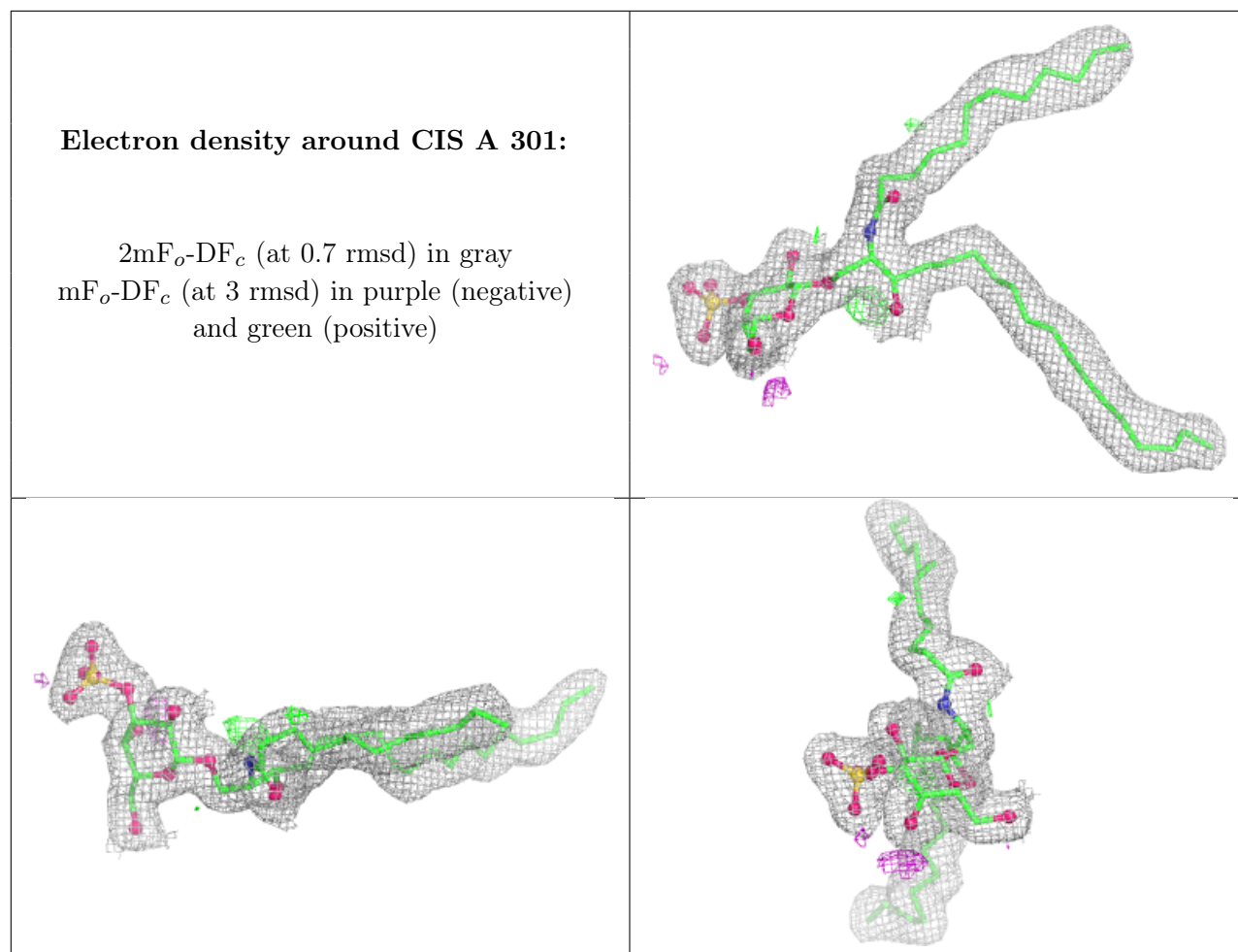
Mol	Type	Chain	Res	Atoms	RSCC	RSR	B-factors(Å <sup>2</sup> )	Q<0.9
3	HEX	A	302	6/6	0.75	0.25	39,44,47,51	0
2	CIS	B	700	49/61	0.97	0.09	18,22,34,38	0
2	CIS	A	301	49/61	0.97	0.10	18,24,43,46	0

The following is a graphical depiction of the model fit to experimental electron density of all instances of the Ligand of Interest. In addition, ligands with molecular weight > 250 and outliers as shown on the geometry validation Tables will also be included. Each fit is shown from different orientation to approximate a three-dimensional view.

**Electron density around CIS B 700:**

$2mF_o-DF_c$  (at 0.7 rmsd) in gray  
 $mF_o-DF_c$  (at 3 rmsd) in purple (negative)  
and green (positive)





## 6.5 Other polymers [i](#)

There are no such residues in this entry.