



Full wwPDB X-ray Structure Validation Report ⓘ

Jun 19, 2024 – 02:26 AM EDT

PDB ID : 4G2Z
Title : Crystal Structure of C-lobe of Bovine lactoferrin Complexed with Mefenamic acid at 1.90 Å Resolution
Authors : Shukla, P.K.; Gautam, L.; Sinha, M.; Kaur, P.; Sharma, S.; Singh, T.P.
Deposited on : 2012-07-13
Resolution : 1.90 Å (reported)

This is a Full wwPDB X-ray Structure Validation Report for a publicly released PDB entry.

We welcome your comments at validation@mail.wwpdb.org

A user guide is available at

<https://www.wwpdb.org/validation/2017/XrayValidationReportHelp>

with specific help available everywhere you see the ⓘ symbol.

The types of validation reports are described at

<http://www.wwpdb.org/validation/2017/FAQs#types>.

The following versions of software and data (see [references ⓘ](#)) were used in the production of this report:

MolProbity : 4.02b-467
Mogul : 2022.3.0, CSD as543be (2022)
Xtriage (Phenix) : 1.20.1
EDS : 2.37.1
Percentile statistics : 20191225.v01 (using entries in the PDB archive December 25th 2019)
Refmac : 5.8.0158
CCP4 : 7.0.044 (Gargrove)
Ideal geometry (proteins) : Engh & Huber (2001)
Ideal geometry (DNA, RNA) : Parkinson et al. (1996)
Validation Pipeline (wwPDB-VP) : 2.37.1

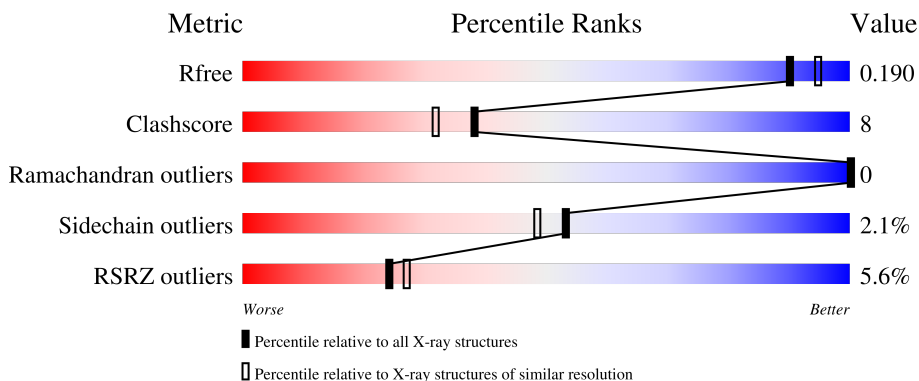
1 Overall quality at a glance

The following experimental techniques were used to determine the structure:

X-RAY DIFFRACTION

The reported resolution of this entry is 1.90 Å.

Percentile scores (ranging between 0-100) for global validation metrics of the entry are shown in the following graphic. The table shows the number of entries on which the scores are based.



Metric	Whole archive (#Entries)	Similar resolution (#Entries, resolution range(Å))
R_{free}	130704	6207 (1.90-1.90)
Clashscore	141614	6847 (1.90-1.90)
Ramachandran outliers	138981	6760 (1.90-1.90)
Sidechain outliers	138945	6760 (1.90-1.90)
RSRZ outliers	127900	6082 (1.90-1.90)

The table below summarises the geometric issues observed across the polymeric chains and their fit to the electron density. The red, orange, yellow and green segments of the lower bar indicate the fraction of residues that contain outliers for ≥ 3 , 2, 1 and 0 types of geometric quality criteria respectively. A grey segment represents the fraction of residues that are not modelled. The numeric value for each fraction is indicated below the corresponding segment, with a dot representing fractions $\leq 5\%$. The upper red bar (where present) indicates the fraction of residues that have poor fit to the electron density. The numeric value is given above the bar.

Mol	Chain	Length	Quality of chain
1	A	335	 4% 85% 14%
2	B	6	 67% 83% 17%
3	C	2	 50% 50%
3	D	2	 100%

The following table lists non-polymeric compounds, carbohydrate monomers and non-standard

residues in protein, DNA, RNA chains that are outliers for geometric or electron-density-fit criteria:

Mol	Type	Chain	Res	Chirality	Geometry	Clashes	Electron density
9	ID8	A	711	-	-	-	X

2 Entry composition [i](#)

There are 10 unique types of molecules in this entry. The entry contains 3009 atoms, of which 0 are hydrogens and 0 are deuteriums.

In the tables below, the ZeroOcc column contains the number of atoms modelled with zero occupancy, the AltConf column contains the number of residues with at least one atom in alternate conformation and the Trace column contains the number of residues modelled with at most 2 atoms.

- Molecule 1 is a protein called Lactotransferrin.

Mol	Chain	Residues	Atoms					ZeroOcc	AltConf	Trace
			Total	C	N	O	S			
1	A	335	2560	1593	448	499	20	0	0	0

There are 2 discrepancies between the modelled and reference sequences:

Chain	Residue	Modelled	Actual	Comment	Reference
A	565	LYS	ASN	conflict	UNP P24627
A	608	GLU	LYS	conflict	UNP P24627

- Molecule 2 is a protein called C-terminal peptide from Lactotransferrin.

Mol	Chain	Residues	Atoms					ZeroOcc	AltConf	Trace
			Total	C	N	O	S			
2	B	6	44	29	6	8	1	0	0	0

- Molecule 3 is an oligosaccharide called 2-acetamido-2-deoxy-beta-D-glucopyranose-(1-4)-2-acetamido-2-deoxy-beta-D-glucopyranose.



Mol	Chain	Residues	Atoms				ZeroOcc	AltConf	Trace
			Total	C	N	O			
3	C	2	28	16	2	10	0	0	0
3	D	2	28	16	2	10	0	0	0

- Molecule 4 is 2-acetamido-2-deoxy-beta-D-glucopyranose (three-letter code: NAG) (formula: C₈H₁₅NO₆).



Mol	Chain	Residues	Atoms				ZeroOcc	AltConf
			Total	C	N	O		
4	A	1	14	8	1	5	0	0

- Molecule 5 is FE (III) ION (three-letter code: FE) (formula: Fe).

Mol	Chain	Residues	Atoms		ZeroOcc	AltConf
			Total	Fe		
5	A	1	1	1	0	0

- Molecule 6 is ZINC ION (three-letter code: ZN) (formula: Zn).

Mol	Chain	Residues	Atoms		ZeroOcc	AltConf
			Total	Zn		
6	A	2	2	2	0	0

- Molecule 7 is CARBONATE ION (three-letter code: CO3) (formula: CO₃).



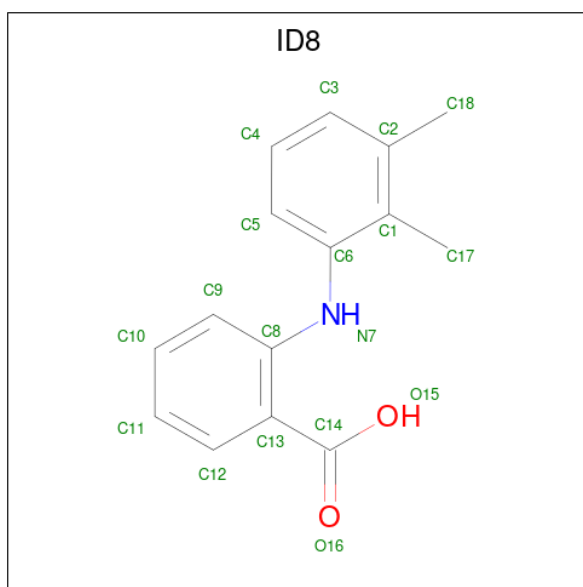
Mol	Chain	Residues	Atoms			ZeroOcc	AltConf
			Total	C	O		
7	A	1	4	1	3	0	0

- Molecule 8 is SULFATE ION (three-letter code: SO₄) (formula: O₄S).



Mol	Chain	Residues	Atoms			ZeroOcc	AltConf
			Total	O	S		
8	A	1	5	4	1	0	0

- Molecule 9 is 2-[(2,3-DIMETHYLPHENYL)AMINO]BENZOIC ACID (three-letter code: ID8) (formula: C₁₅H₁₅NO₂).



Mol	Chain	Residues	Atoms				ZeroOcc	AltConf
			Total	C	N	O		
9	A	1	18	15	1	2	0	0

- Molecule 10 is water.

Mol	Chain	Residues	Atoms		ZeroOcc	AltConf
			Total	O		
10	A	302	302	302	0	0
10	B	3	3	3	0	0

4 Data and refinement statistics i

Property	Value	Source
Space group	P 1 21 1	Depositor
Cell constants a, b, c, α , β , γ	62.39Å 49.83Å 65.32Å 90.00° 107.05° 90.00°	Depositor
Resolution (Å)	19.92 – 1.90 19.92 – 1.90	Depositor EDS
% Data completeness (in resolution range)	99.7 (19.92-1.90) 99.8 (19.92-1.90)	Depositor EDS
R_{merge}	(Not available)	Depositor
R_{sym}	0.04	Depositor
$\langle I/\sigma(I) \rangle$ ¹	11.30 (at 1.90Å)	Xtrriage
Refinement program	REFMAC 5.6.0117	Depositor
R, R_{free}	0.148 , 0.191 0.149 , 0.190	Depositor DCC
R_{free} test set	1537 reflections (5.04%)	wwPDB-VP
Wilson B-factor (Å ²)	18.0	Xtrriage
Anisotropy	0.080	Xtrriage
Bulk solvent k_{sol} (e/Å ³), B_{sol} (Å ²)	0.40 , 53.1	EDS
L-test for twinning ²	$\langle L \rangle = 0.50$, $\langle L^2 \rangle = 0.33$	Xtrriage
Estimated twinning fraction	0.017 for l,-k,h	Xtrriage
F_o, F_c correlation	0.96	EDS
Total number of atoms	3009	wwPDB-VP
Average B, all atoms (Å ²)	25.0	wwPDB-VP

Xtrriage's analysis on translational NCS is as follows: *The largest off-origin peak in the Patterson function is 6.53% of the height of the origin peak. No significant pseudotranslation is detected.*

¹Intensities estimated from amplitudes.

²Theoretical values of $\langle |L| \rangle$, $\langle L^2 \rangle$ for acentric reflections are 0.5, 0.333 respectively for untwinned datasets, and 0.375, 0.2 for perfectly twinned datasets.

5 Model quality [i](#)

5.1 Standard geometry [i](#)

Bond lengths and bond angles in the following residue types are not validated in this section: FE, SO4, CO3, ID8, ZN, NAG

The Z score for a bond length (or angle) is the number of standard deviations the observed value is removed from the expected value. A bond length (or angle) with $|Z| > 5$ is considered an outlier worth inspection. RMSZ is the root-mean-square of all Z scores of the bond lengths (or angles).

Mol	Chain	Bond lengths		Bond angles	
		RMSZ	# $ Z > 5$	RMSZ	# $ Z > 5$
1	A	1.17	6/2608 (0.2%)	1.06	7/3533 (0.2%)
2	B	0.84	0/44	0.74	0/58
All	All	1.17	6/2652 (0.2%)	1.06	7/3591 (0.2%)

All (6) bond length outliers are listed below:

Mol	Chain	Res	Type	Atoms	Z	Observed(Å)	Ideal(Å)
1	A	601	SER	CB-OG	-6.25	1.34	1.42
1	A	448	TRP	CD2-CE2	5.54	1.48	1.41
1	A	523	TYR	CE1-CZ	5.17	1.45	1.38
1	A	467	TRP	CD2-CE2	5.08	1.47	1.41
1	A	569	PHE	CG-CD1	5.05	1.46	1.38
1	A	347	TRP	CD2-CE2	5.04	1.47	1.41

All (7) bond angle outliers are listed below:

Mol	Chain	Res	Type	Atoms	Z	Observed(°)	Ideal(°)
1	A	600	ARG	NE-CZ-NH2	8.45	124.52	120.30
1	A	415	ARG	NE-CZ-NH2	-8.39	116.11	120.30
1	A	600	ARG	NE-CZ-NH1	-7.97	116.31	120.30
1	A	526	TYR	CB-CG-CD2	-6.17	117.30	121.00
1	A	643	ASP	CB-CG-OD1	5.68	123.41	118.30
1	A	462	ASP	CB-CG-OD2	-5.24	113.58	118.30
1	A	378	ASP	CB-CG-OD1	5.01	122.81	118.30

There are no chirality outliers.

There are no planarity outliers.

5.2 Too-close contacts [i](#)

In the following table, the Non-H and H(model) columns list the number of non-hydrogen atoms and hydrogen atoms in the chain respectively. The H(added) column lists the number of hydrogen atoms added and optimized by MolProbity. The Clashes column lists the number of clashes within the asymmetric unit, whereas Symm-Clashes lists symmetry-related clashes.

Mol	Chain	Non-H	H(model)	H(added)	Clashes	Symm-Clashes
1	A	2560	0	2480	38	0
2	B	44	0	39	0	0
3	C	28	0	25	1	0
3	D	28	0	25	0	0
4	A	14	0	13	1	0
5	A	1	0	0	0	0
6	A	2	0	0	0	0
7	A	4	0	0	0	0
8	A	5	0	0	0	0
9	A	18	0	14	5	0
10	A	302	0	0	3	0
10	B	3	0	0	0	0
All	All	3009	0	2596	40	0

The all-atom clashscore is defined as the number of clashes found per 1000 atoms (including hydrogen atoms). The all-atom clashscore for this structure is 8.

All (40) close contacts within the same asymmetric unit are listed below, sorted by their clash magnitude.

Atom-1	Atom-2	Interatomic distance (Å)	Clash overlap (Å)
1:A:342:TYR:HD2	1:A:342:TYR:O	1.55	0.89
1:A:342:TYR:C	1:A:342:TYR:CD2	2.47	0.86
1:A:342:TYR:O	1:A:342:TYR:CD2	2.30	0.85
1:A:565:LYS:HE3	1:A:567:GLU:H	1.47	0.79
1:A:662:GLY:CA	9:A:711:ID8:H173	2.13	0.78
9:A:711:ID8:H12	10:A:1081:HOH:O	1.84	0.76
1:A:620:LYS:HD2	1:A:646:GLU:HG3	1.68	0.76
1:A:565:LYS:HE3	1:A:567:GLU:CB	2.21	0.71
1:A:662:GLY:HA2	9:A:711:ID8:H173	1.72	0.69
1:A:565:LYS:HE3	1:A:567:GLU:N	2.08	0.69
1:A:343:THR:H	1:A:606:HIS:CE1	2.12	0.67
1:A:430:THR:HB	1:A:594:ASN:HD22	1.58	0.67
1:A:565:LYS:HD2	1:A:566:ARG:N	2.10	0.67
1:A:662:GLY:HA3	9:A:711:ID8:H173	1.80	0.62
1:A:430:THR:HB	1:A:594:ASN:ND2	2.15	0.61

Continued on next page...

Continued from previous page...

Atom-1	Atom-2	Interatomic distance (Å)	Clash overlap (Å)
1:A:565:LYS:HD2	1:A:566:ARG:H	1.70	0.57
1:A:343:THR:HG1	1:A:606:HIS:CD2	2.25	0.55
1:A:565:LYS:CE	1:A:567:GLU:H	2.19	0.54
1:A:395:ASP:HA	1:A:595:HIS:CD2	2.42	0.54
9:A:711:ID8:H5	9:A:711:ID8:C14	2.37	0.54
1:A:626:PRO:HA	1:A:630:CYS:SG	2.51	0.51
1:A:566:ARG:HG2	1:A:581:VAL:HG21	1.93	0.50
1:A:600:ARG:HD2	10:A:965:HOH:O	2.12	0.50
1:A:565:LYS:NZ	10:A:1100:HOH:O	2.45	0.47
1:A:665:TYR:CZ	1:A:669:ILE:HD11	2.49	0.47
1:A:342:TYR:HA	1:A:606:HIS:CE1	2.50	0.47
1:A:565:LYS:HE3	1:A:567:GLU:HB2	1.92	0.47
1:A:342:TYR:HA	1:A:606:HIS:HE1	1.80	0.46
1:A:447:THR:HA	1:A:572:LEU:HD22	1.98	0.45
1:A:602:ASP:OD1	1:A:603:ARG:HG2	2.18	0.44
1:A:636:THR:HA	1:A:643:ASP:OD2	2.18	0.44
1:A:520:LYS:HD2	1:A:520:LYS:HA	1.76	0.43
1:A:664:GLU:HG2	3:C:2:NAG:O6	2.19	0.43
1:A:364:GLN:HG3	1:A:629:PHE:HB2	2.00	0.42
1:A:620:LYS:CD	1:A:646:GLU:HG3	2.44	0.42
1:A:377:THR:HG21	1:A:398:TYR:CD2	2.54	0.42
1:A:342:TYR:CD1	4:A:701:NAG:H62	2.55	0.42
1:A:483:PHE:CD2	1:A:483:PHE:C	2.92	0.41
1:A:513:ASP:O	1:A:516:VAL:HG22	2.21	0.41
1:A:366:GLY:C	1:A:367:GLN:HG2	2.41	0.41

There are no symmetry-related clashes.

5.3 Torsion angles [i](#)

5.3.1 Protein backbone [i](#)

In the following table, the Percentiles column shows the percent Ramachandran outliers of the chain as a percentile score with respect to all X-ray entries followed by that with respect to entries of similar resolution.

The Analysed column shows the number of residues for which the backbone conformation was analysed, and the total number of residues.

Mol	Chain	Analysed	Favoured	Allowed	Outliers	Percentiles
1	A	333/335 (99%)	323 (97%)	10 (3%)	0	100 100

Continued on next page...

Continued from previous page...

Mol	Chain	Analysed	Favoured	Allowed	Outliers	Percentiles	
2	B	4/6 (67%)	3 (75%)	1 (25%)	0	100	100
All	All	337/341 (99%)	326 (97%)	11 (3%)	0	100	100

There are no Ramachandran outliers to report.

5.3.2 Protein sidechains [i](#)

In the following table, the Percentiles column shows the percent sidechain outliers of the chain as a percentile score with respect to all X-ray entries followed by that with respect to entries of similar resolution.

The Analysed column shows the number of residues for which the sidechain conformation was analysed, and the total number of residues.

Mol	Chain	Analysed	Rotameric	Outliers	Percentiles	
1	A	278/278 (100%)	273 (98%)	5 (2%)	59	55
2	B	4/4 (100%)	3 (75%)	1 (25%)	0	0
All	All	282/282 (100%)	276 (98%)	6 (2%)	53	48

All (6) residues with a non-rotameric sidechain are listed below:

Mol	Chain	Res	Type
1	A	342	TYR
1	A	419	LYS
1	A	515	CYS
1	A	559	ASP
1	A	621	ASN
2	B	681	LEU

Sometimes sidechains can be flipped to improve hydrogen bonding and reduce clashes. All (3) such sidechains are listed below:

Mol	Chain	Res	Type
1	A	360	GLN
1	A	489	GLN
1	A	551	ASN

5.3.3 RNA [i](#)

There are no RNA molecules in this entry.

5.4 Non-standard residues in protein, DNA, RNA chains [i](#)

There are no non-standard protein/DNA/RNA residues in this entry.

5.5 Carbohydrates [i](#)

4 monosaccharides are modelled in this entry.

In the following table, the Counts columns list the number of bonds (or angles) for which Mogul statistics could be retrieved, the number of bonds (or angles) that are observed in the model and the number of bonds (or angles) that are defined in the Chemical Component Dictionary. The Link column lists molecule types, if any, to which the group is linked. The Z score for a bond length (or angle) is the number of standard deviations the observed value is removed from the expected value. A bond length (or angle) with $|Z| > 2$ is considered an outlier worth inspection. RMSZ is the root-mean-square of all Z scores of the bond lengths (or angles).

Mol	Type	Chain	Res	Link	Bond lengths			Bond angles		
					Counts	RMSZ	# Z > 2	Counts	RMSZ	# Z > 2
3	NAG	C	1	3,1	14,14,15	0.89	0	17,19,21	1.63	4 (23%)
3	NAG	C	2	3	14,14,15	0.75	0	17,19,21	1.72	5 (29%)
3	NAG	D	1	3,1	14,14,15	1.15	2 (14%)	17,19,21	1.65	5 (29%)
3	NAG	D	2	3	14,14,15	0.81	0	17,19,21	1.75	3 (17%)

In the following table, the Chirals column lists the number of chiral outliers, the number of chiral centers analysed, the number of these observed in the model and the number defined in the Chemical Component Dictionary. Similar counts are reported in the Torsion and Rings columns. '-' means no outliers of that kind were identified.

Mol	Type	Chain	Res	Link	Chirals	Torsions	Rings
3	NAG	C	1	3,1	-	2/6/23/26	0/1/1/1
3	NAG	C	2	3	-	0/6/23/26	0/1/1/1
3	NAG	D	1	3,1	-	0/6/23/26	0/1/1/1
3	NAG	D	2	3	-	0/6/23/26	0/1/1/1

All (2) bond length outliers are listed below:

Mol	Chain	Res	Type	Atoms	Z	Observed(Å)	Ideal(Å)
3	D	1	NAG	C1-C2	2.16	1.55	1.52
3	D	1	NAG	C4-C5	2.14	1.57	1.53

All (17) bond angle outliers are listed below:

Mol	Chain	Res	Type	Atoms	Z	Observed(°)	Ideal(°)
3	D	2	NAG	C3-C4-C5	-4.45	102.17	110.23
3	D	1	NAG	C1-O5-C5	3.97	117.51	112.19
3	C	2	NAG	O4-C4-C5	3.80	118.69	109.32
3	C	1	NAG	C1-C2-N2	-3.65	104.68	110.43
3	C	2	NAG	C2-N2-C7	3.16	127.13	122.90
3	C	1	NAG	C8-C7-N2	3.11	121.27	116.12
3	D	2	NAG	O6-C6-C5	-2.99	101.17	111.33
3	D	2	NAG	O5-C5-C4	-2.52	104.71	110.83
3	C	2	NAG	C1-C2-N2	-2.42	106.61	110.43
3	C	1	NAG	C2-N2-C7	2.29	125.97	122.90
3	D	1	NAG	O5-C1-C2	-2.23	107.84	111.29
3	D	1	NAG	O4-C4-C5	-2.18	103.95	109.32
3	C	2	NAG	O7-C7-C8	-2.17	118.18	122.05
3	D	1	NAG	C8-C7-N2	2.12	119.64	116.12
3	C	2	NAG	O3-C3-C2	2.03	113.62	109.40
3	D	1	NAG	O4-C4-C3	-2.02	105.62	110.38
3	C	1	NAG	O5-C5-C4	-2.00	105.95	110.83

There are no chirality outliers.

All (2) torsion outliers are listed below:

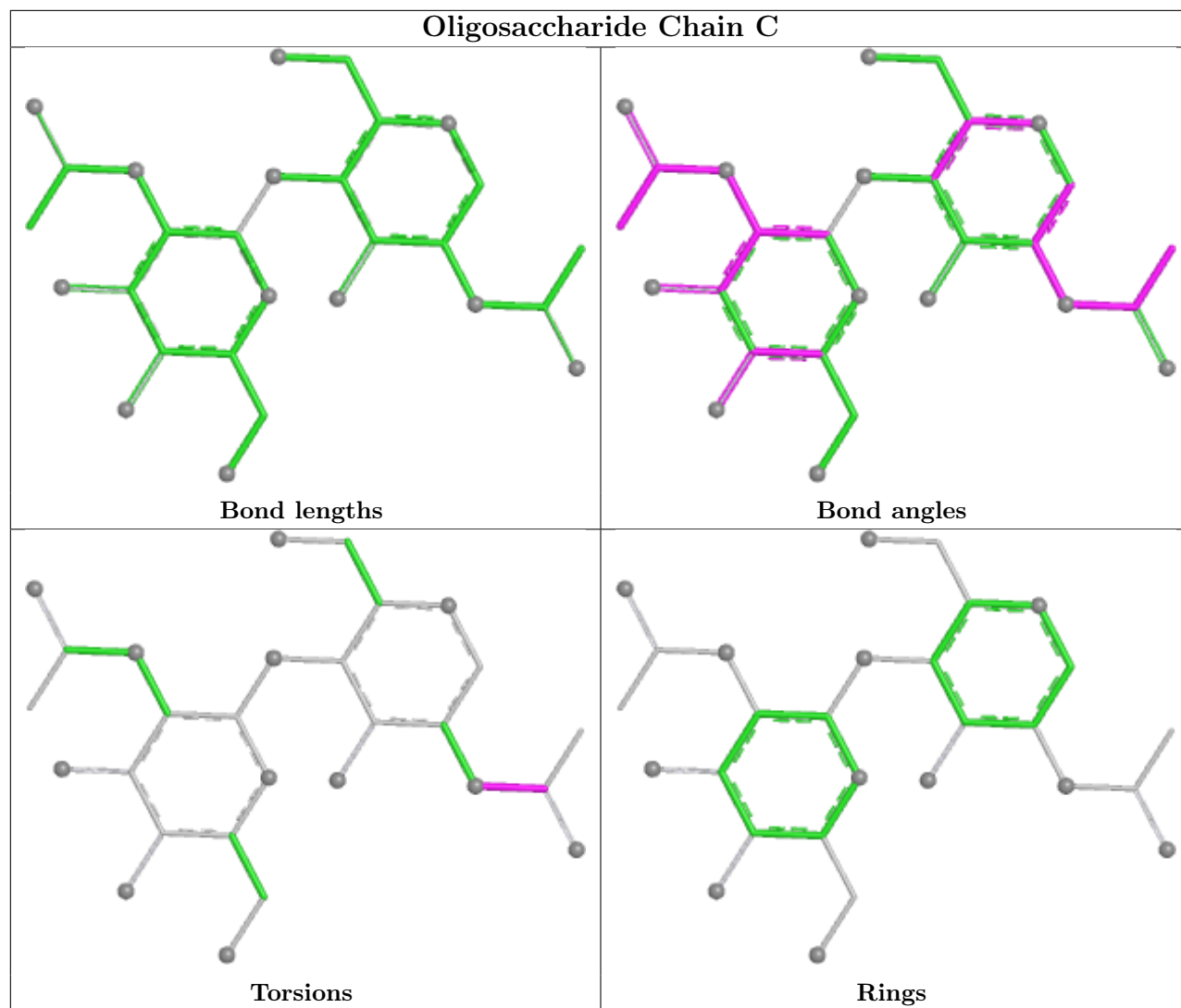
Mol	Chain	Res	Type	Atoms
3	C	1	NAG	C8-C7-N2-C2
3	C	1	NAG	O7-C7-N2-C2

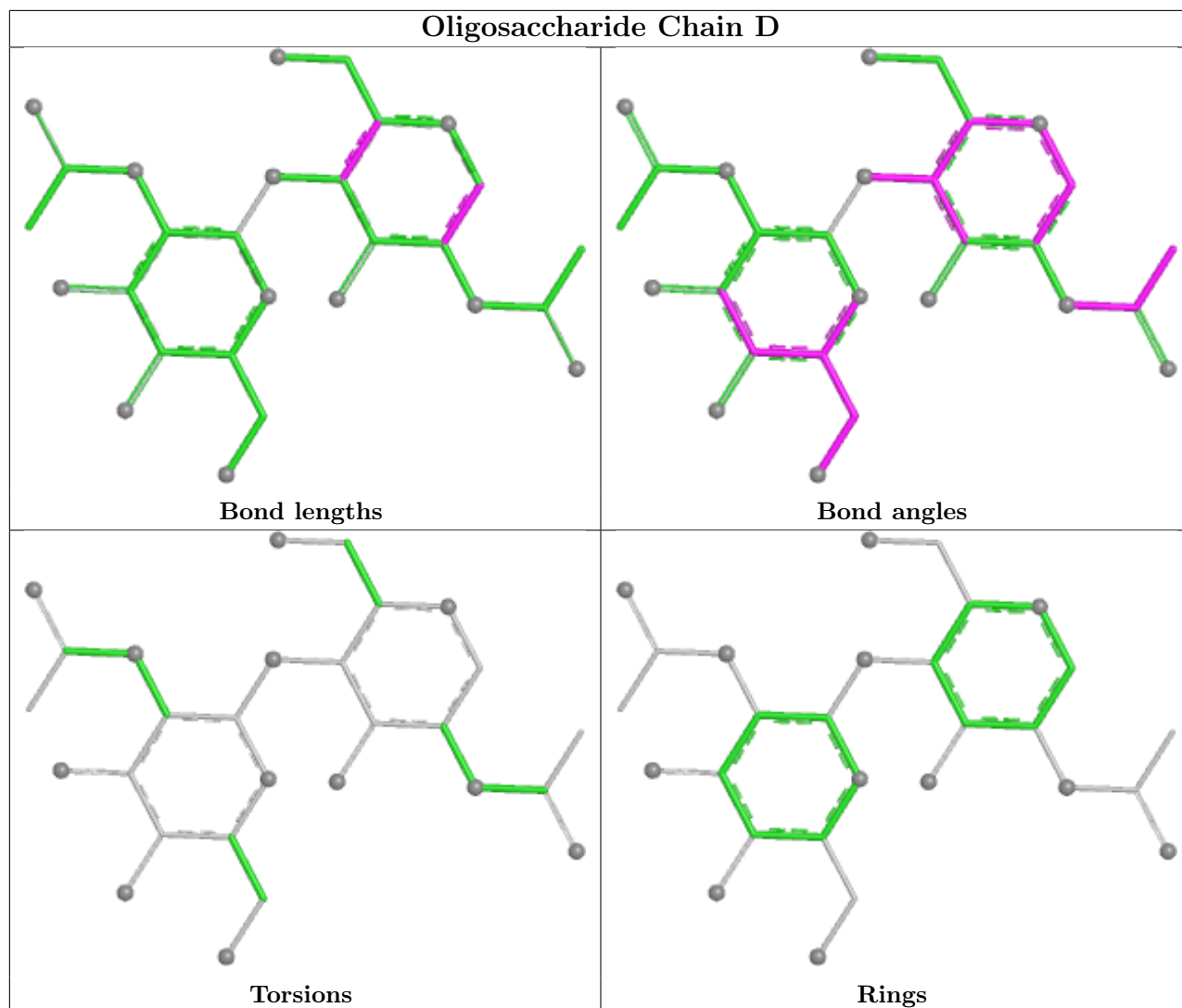
There are no ring outliers.

1 monomer is involved in 1 short contact:

Mol	Chain	Res	Type	Clashes	Symm-Clashes
3	C	2	NAG	1	0

The following is a two-dimensional graphical depiction of Mogul quality analysis of bond lengths, bond angles, torsion angles, and ring geometry for oligosaccharide.





5.6 Ligand geometry [i](#)

Of 7 ligands modelled in this entry, 3 are monoatomic - leaving 4 for Mogul analysis.

In the following table, the Counts columns list the number of bonds (or angles) for which Mogul statistics could be retrieved, the number of bonds (or angles) that are observed in the model and the number of bonds (or angles) that are defined in the Chemical Component Dictionary. The Link column lists molecule types, if any, to which the group is linked. The Z score for a bond length (or angle) is the number of standard deviations the observed value is removed from the expected value. A bond length (or angle) with $|Z| > 2$ is considered an outlier worth inspection. RMSZ is the root-mean-square of all Z scores of the bond lengths (or angles).

Mol	Type	Chain	Res	Link	Bond lengths			Bond angles		
					Counts	RMSZ	$\# Z > 2$	Counts	RMSZ	$\# Z > 2$
4	NAG	A	701	1	14,14,15	1.12	2 (14%)	17,19,21	1.99	5 (29%)
9	ID8	A	711	-	19,19,19	0.96	0	26,26,26	2.56	7 (26%)
7	CO3	A	709	5	3,3,3	0.76	0	2,3,3	1.62	0

Mol	Type	Chain	Res	Link	Bond lengths			Bond angles		
					Counts	RMSZ	# Z > 2	Counts	RMSZ	# Z > 2
8	SO4	A	710	-	4,4,4	0.60	0	6,6,6	0.45	0

In the following table, the Chirals column lists the number of chiral outliers, the number of chiral centers analysed, the number of these observed in the model and the number defined in the Chemical Component Dictionary. Similar counts are reported in the Torsion and Rings columns. '-' means no outliers of that kind were identified.

Mol	Type	Chain	Res	Link	Chirals	Torsions	Rings
4	NAG	A	701	1	-	0/6/23/26	0/1/1/1
9	ID8	A	711	-	-	6/8/8/8	0/2/2/2

All (2) bond length outliers are listed below:

Mol	Chain	Res	Type	Atoms	Z	Observed(Å)	Ideal(Å)
4	A	701	NAG	O7-C7	2.80	1.29	1.23
4	A	701	NAG	O5-C1	-2.22	1.40	1.43

All (12) bond angle outliers are listed below:

Mol	Chain	Res	Type	Atoms	Z	Observed(°)	Ideal(°)
9	A	711	ID8	C8-C13-C14	6.95	129.46	121.72
9	A	711	ID8	C13-C8-N7	6.60	132.03	120.50
9	A	711	ID8	C9-C8-N7	-6.34	108.65	121.32
4	A	701	NAG	C8-C7-N2	-3.88	109.69	116.12
4	A	701	NAG	C2-N2-C7	3.75	127.92	122.90
4	A	701	NAG	O5-C1-C2	-3.28	106.21	111.29
4	A	701	NAG	O7-C7-N2	3.20	127.64	121.98
4	A	701	NAG	C1-O5-C5	2.64	115.73	112.19
9	A	711	ID8	C12-C13-C14	-2.59	112.69	118.64
9	A	711	ID8	O15-C14-C13	2.40	122.10	115.28
9	A	711	ID8	O16-C14-C13	-2.15	116.85	121.97
9	A	711	ID8	C17-C1-C6	2.02	123.84	121.04

There are no chirality outliers.

All (6) torsion outliers are listed below:

Mol	Chain	Res	Type	Atoms
9	A	711	ID8	C13-C8-N7-C6
9	A	711	ID8	C9-C8-N7-C6
9	A	711	ID8	C8-C13-C14-O15
9	A	711	ID8	C8-C13-C14-O16

Continued on next page...

Continued from previous page...

Mol	Chain	Res	Type	Atoms
9	A	711	ID8	C12-C13-C14-O15
9	A	711	ID8	C12-C13-C14-O16

There are no ring outliers.

2 monomers are involved in 6 short contacts:

Mol	Chain	Res	Type	Clashes	Symm-Clashes
4	A	701	NAG	1	0
9	A	711	ID8	5	0

5.7 Other polymers [i](#)

There are no such residues in this entry.

5.8 Polymer linkage issues [i](#)

There are no chain breaks in this entry.

6 Fit of model and data [i](#)

6.1 Protein, DNA and RNA chains [i](#)

In the following table, the column labelled ‘#RSRZ > 2’ contains the number (and percentage) of RSRZ outliers, followed by percent RSRZ outliers for the chain as percentile scores relative to all X-ray entries and entries of similar resolution. The OWAB column contains the minimum, median, 95th percentile and maximum values of the occupancy-weighted average B-factor per residue. The column labelled ‘Q < 0.9’ lists the number of (and percentage) of residues with an average occupancy less than 0.9.

Mol	Chain	Analysed	<RSRZ>	#RSRZ>2	OWAB(Å ²)	Q<0.9
1	A	335/335 (100%)	-0.23	15 (4%) 33 36	9, 18, 45, 95	1 (0%)
2	B	6/6 (100%)	4.82	4 (66%) 0 0	37, 39, 100, 107	0
All	All	341/341 (100%)	-0.14	19 (5%) 24 27	9, 18, 45, 107	1 (0%)

All (19) RSRZ outliers are listed below:

Mol	Chain	Res	Type	RSRZ
2	B	681	LEU	14.0
1	A	342	TYR	10.3
1	A	420	HIS	7.3
2	B	682	GLU	7.3
1	A	422	SER	6.4
1	A	419	LYS	4.8
1	A	418	SER	3.3
1	A	421	SER	3.0
1	A	676	SER	2.8
2	B	683	ALA	2.7
1	A	663	THR	2.7
1	A	423	LEU	2.4
2	B	685	ALA	2.3
1	A	343	THR	2.3
1	A	621	ASN	2.2
1	A	635	GLU	2.2
1	A	627	ASP	2.2
1	A	429	PRO	2.1
1	A	416	LYS	2.1

6.2 Non-standard residues in protein, DNA, RNA chains [i](#)

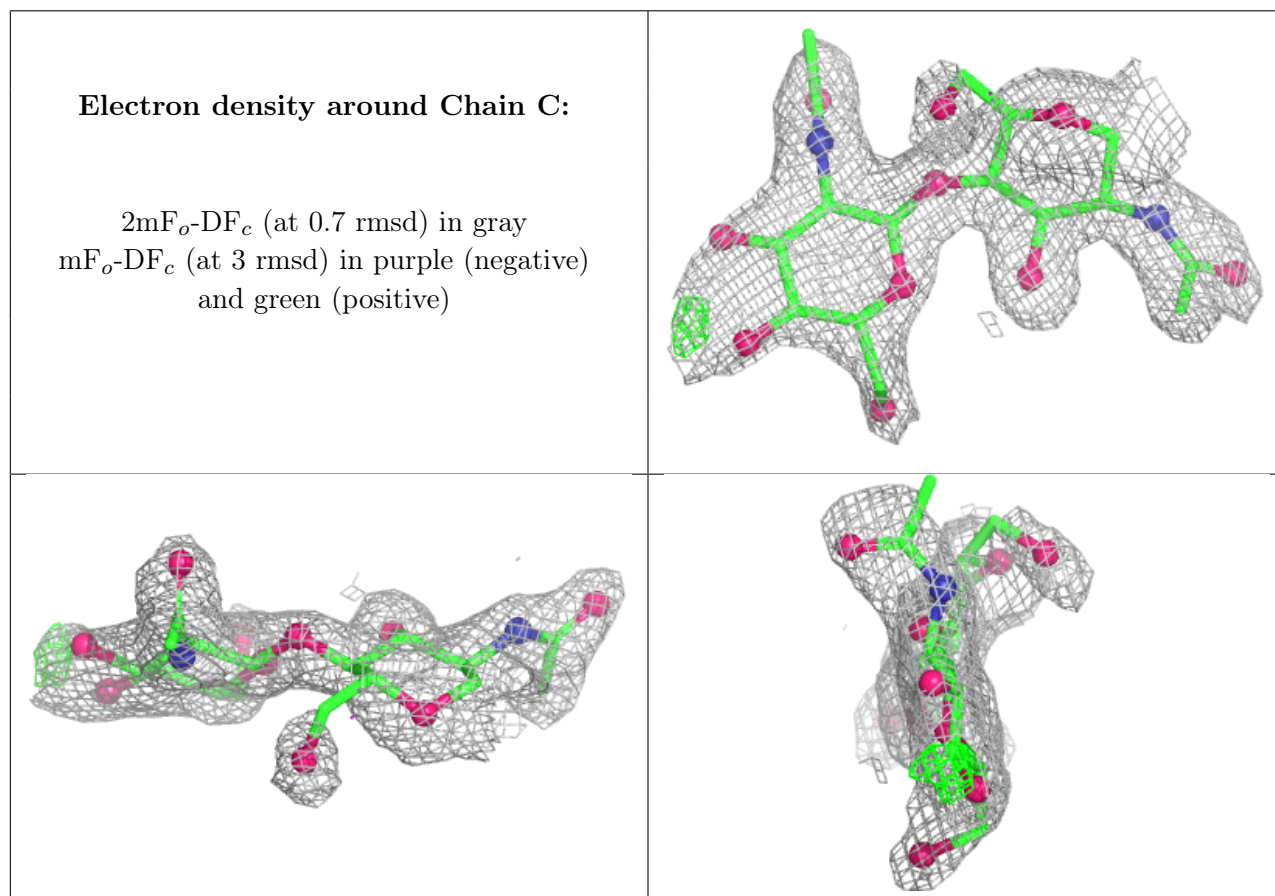
There are no non-standard protein/DNA/RNA residues in this entry.

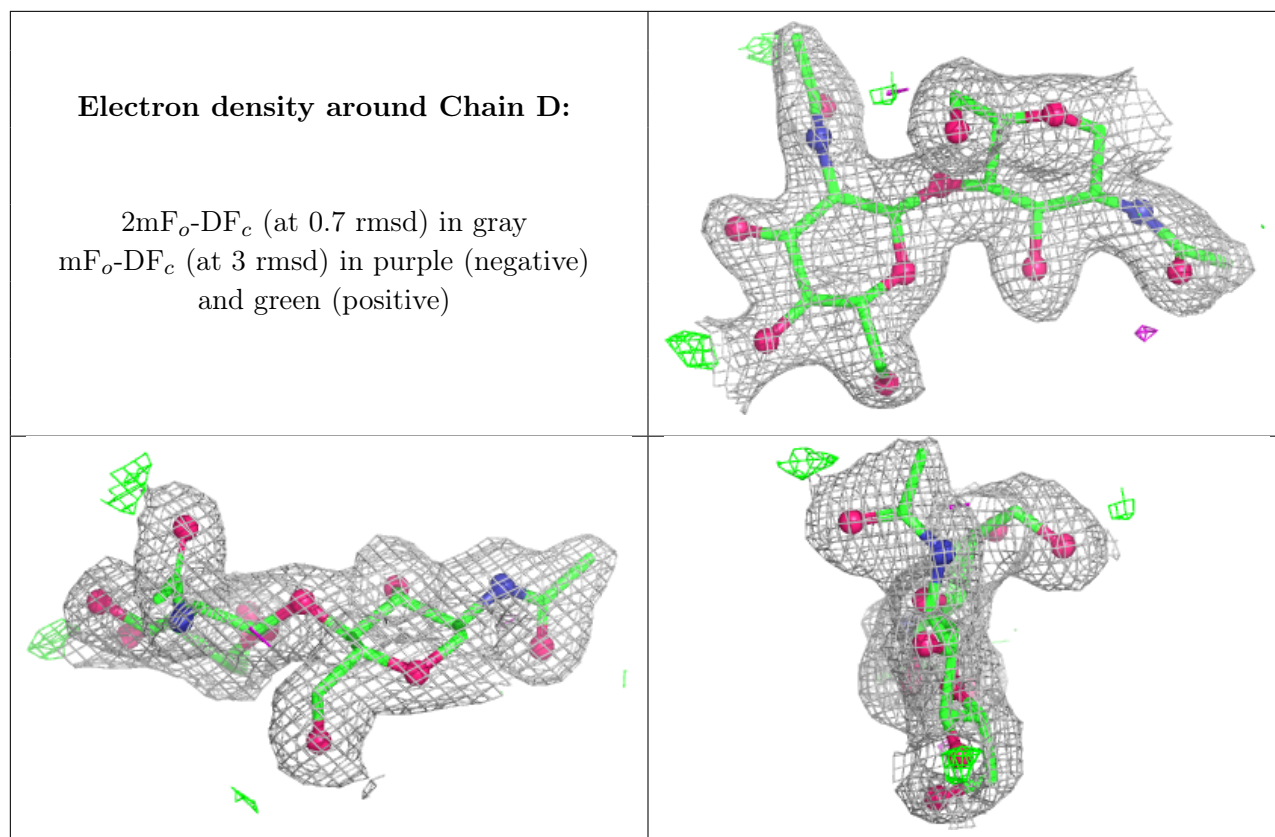
6.3 Carbohydrates [i](#)

In the following table, the Atoms column lists the number of modelled atoms in the group and the number defined in the chemical component dictionary. The B-factors column lists the minimum, median, 95th percentile and maximum values of B factors of atoms in the group. The column labelled 'Q<0.9' lists the number of atoms with occupancy less than 0.9.

Mol	Type	Chain	Res	Atoms	RSCC	RSR	B-factors(Å ²)	Q<0.9
3	NAG	C	1	14/15	0.85	0.17	30,42,53,55	0
3	NAG	C	2	14/15	0.87	0.30	47,56,62,62	0
3	NAG	D	2	14/15	0.91	0.20	34,38,45,54	0
3	NAG	D	1	14/15	0.94	0.09	21,27,31,32	0

The following is a graphical depiction of the model fit to experimental electron density for oligosaccharide. Each fit is shown from different orientation to approximate a three-dimensional view.





6.4 Ligands [i](#)

In the following table, the Atoms column lists the number of modelled atoms in the group and the number defined in the chemical component dictionary. The B-factors column lists the minimum, median, 95th percentile and maximum values of B factors of atoms in the group. The column labelled 'Q< 0.9' lists the number of atoms with occupancy less than 0.9.

Mol	Type	Chain	Res	Atoms	RSCC	RSR	B-factors(Å ²)	Q<0.9
9	ID8	A	711	18/18	0.54	0.51	45,62,66,67	18
8	SO4	A	710	5/5	0.80	0.35	57,70,78,86	0
4	NAG	A	701	14/15	0.80	0.27	33,48,55,57	0
6	ZN	A	708	1/1	0.98	0.04	23,23,23,23	0
6	ZN	A	707	1/1	0.99	0.05	17,17,17,17	0
7	CO3	A	709	4/4	0.99	0.04	10,10,10,11	0
5	FE	A	706	1/1	1.00	0.04	9,9,9,9	0

6.5 Other polymers [i](#)

There are no such residues in this entry.