



Full wwPDB X-ray Structure Validation Report ⓘ

Mar 5, 2026 – 08:19 PM UTC

PDB ID : 4EZL / pdb_00004ezl
Title : Potent and Selective Inhibitors of PI3K-delta: Obtaining Isoform Selectivity from the Affinity Pocket and Tryptophan Shelf
Authors : Murray, J.M.
Deposited on : 2012-05-02
Resolution : 2.94 Å(reported)

This is a Full wwPDB X-ray Structure Validation Report for a publicly released PDB entry.

We welcome your comments at validation@mail.wwpdb.org

A user guide is available at

<https://www.wwpdb.org/validation/2017/XrayValidationReportHelp>

with specific help available everywhere you see the ⓘ symbol.

The types of validation reports are described at

<http://www.wwpdb.org/validation/2017/FAQs#types>.

The following versions of software and data (see [references ⓘ](#)) were used in the production of this report:

MolProbity : 4-5-2 with Phenix2.0
Mogul : 2022.3.0, CSD as543be (2022)
Xtrriage (Phenix) : 2.0
EDS : 3.0
Buster-report : wwPDB partial adaption of 1.1.7 (2018)
Percentile statistics : 20250101.v01 (using entries in the PDB archive January 1st 2025)
CCP4 : 9.0.010 (Gargrove)
Density-Fitness : 1.0.12
Ideal geometry (proteins) : Engh & Huber (2001)
Ideal geometry (DNA, RNA) : Parkinson et al. (1996)
Validation Pipeline (wwPDB-VP) : 2.49

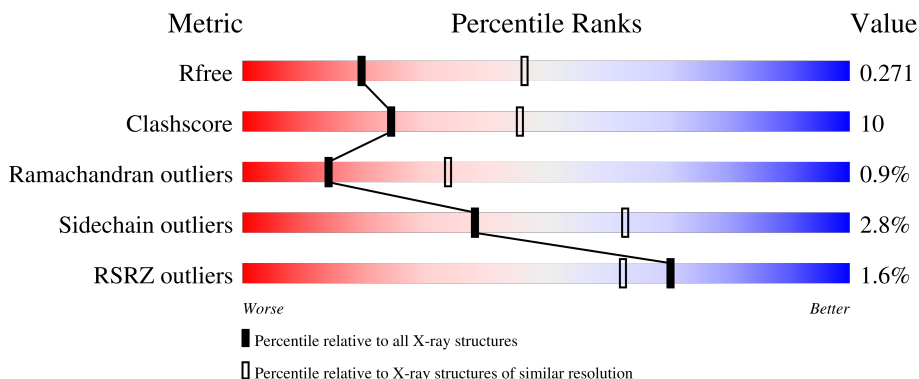
1 Overall quality at a glance

The following experimental techniques were used to determine the structure:

X-RAY DIFFRACTION

The reported resolution of this entry is 2.94 Å.

Percentile scores (ranging between 0-100) for global validation metrics of the entry are shown in the following graphic. The table shows the number of entries on which the scores are based.



Metric	Whole archive (#Entries)	Similar resolution (#Entries, resolution range(Å))
R_{free}	180053	1159 (2.96-2.92)
Clashscore	190562	1184 (2.96-2.92)
Ramachandran outliers	187476	1131 (2.96-2.92)
Sidechain outliers	187428	1131 (2.96-2.92)
RSRZ outliers	180081	1159 (2.96-2.92)

The table below summarises the geometric issues observed across the polymeric chains and their fit to the electron density. The red, orange, yellow and green segments of the lower bar indicate the fraction of residues that contain outliers for ≥ 3 , 2, 1 and 0 types of geometric quality criteria respectively. A grey segment represents the fraction of residues that are not modelled. The numeric value for each fraction is indicated below the corresponding segment, with a dot representing fractions $\leq 5\%$. The upper red bar (where present) indicates the fraction of residues that have poor fit to the electron density. The numeric value is given above the bar.

Mol	Chain	Length	Quality of chain
1	A	966	

2 Entry composition

There are 3 unique types of molecules in this entry. The entry contains 6770 atoms, of which 0 are hydrogens and 0 are deuteriums.

In the tables below, the ZeroOcc column contains the number of atoms modelled with zero occupancy, the AltConf column contains the number of residues with at least one atom in alternate conformation and the Trace column contains the number of residues modelled with at most 2 atoms.

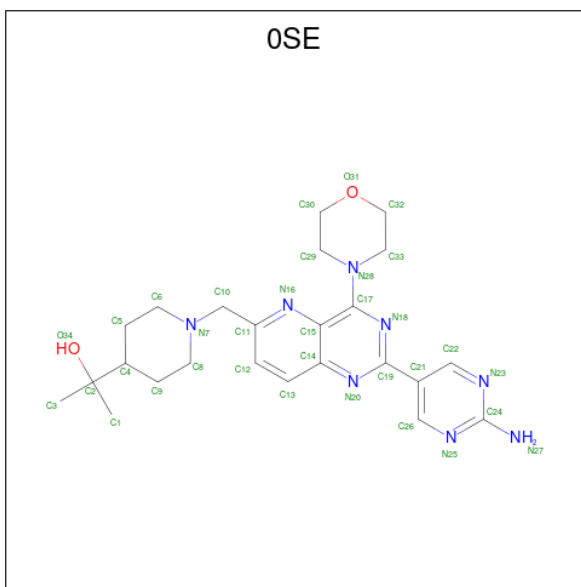
- Molecule 1 is a protein called Phosphatidylinositol 4,5-bisphosphate 3-kinase catalytic subunit gamma isoform.

Mol	Chain	Residues	Atoms					ZeroOcc	AltConf	Trace
			Total	C	N	O	S			
1	A	834	6735	4324	1149	1228	34	0	0	0

There are 8 discrepancies between the modelled and reference sequences:

Chain	Residue	Modelled	Actual	Comment	Reference
A	143	MET	-	expression tag	UNP P48736
A	802	THR	LYS	engineered mutation	UNP P48736
A	1103	HIS	-	expression tag	UNP P48736
A	1104	HIS	-	expression tag	UNP P48736
A	1105	HIS	-	expression tag	UNP P48736
A	1106	HIS	-	expression tag	UNP P48736
A	1107	HIS	-	expression tag	UNP P48736
A	1108	HIS	-	expression tag	UNP P48736

- Molecule 2 is 2-(1-{[2-(2-aminopyrimidin-5-yl)-4-(morpholin-4-yl)pyrido[3,2-d]pyrimidin-6-yl]methyl}piperidin-4-yl)propan-2-ol (CCD ID: 0SE) (formula: C₂₄H₃₂N₈O₂).



Mol	Chain	Residues	Atoms				ZeroOcc	AltConf
			Total	C	N	O		
2	A	1	34	24	8	2	0	0

- Molecule 3 is water.

Mol	Chain	Residues	Atoms		ZeroOcc	AltConf
			Total	O		
3	A	1	1	1	0	0

4 Data and refinement statistics

Property	Value	Source
Space group	C 1 2 1	Depositor
Cell constants a, b, c, α , β , γ	141.33Å 67.19Å 106.56Å 90.00° 96.10° 90.00°	Depositor
Resolution (Å)	31.14 – 2.94 31.14 – 2.94	Depositor EDS
% Data completeness (in resolution range)	94.9 (31.14-2.94) 95.3 (31.14-2.94)	Depositor EDS
R_{merge}	0.09	Depositor
R_{sym}	(Not available)	Depositor
$\langle I/\sigma(I) \rangle$ ¹	2.47 (at 2.95Å)	Xtrriage
Refinement program	PHENIX 1.7.2_869	Depositor
R, R_{free}	0.244 , 0.271 0.241 , 0.271	Depositor DCC
R_{free} test set	1045 reflections (5.12%)	wwPDB-VP
Wilson B-factor (Å ²)	79.0	Xtrriage
Anisotropy	0.066	Xtrriage
Bulk solvent k_{sol} (e/Å ³), B_{sol} (Å ²)	0.27 , 51.7	EDS
L-test for twinning ²	$\langle L \rangle = 0.49$, $\langle L^2 \rangle = 0.32$	Xtrriage
Estimated twinning fraction	No twinning to report.	Xtrriage
F_o, F_c correlation	0.93	EDS
Total number of atoms	6770	wwPDB-VP
Average B, all atoms (Å ²)	102.0	wwPDB-VP

Xtrriage's analysis on translational NCS is as follows: *The largest off-origin peak in the Patterson function is 5.05% of the height of the origin peak. No significant pseudotranslation is detected.*

¹Intensities estimated from amplitudes.

²Theoretical values of $\langle |L| \rangle$, $\langle L^2 \rangle$ for acentric reflections are 0.5, 0.333 respectively for untwinned datasets, and 0.375, 0.2 for perfectly twinned datasets.

5 Model quality i

5.1 Standard geometry i

Bond lengths and bond angles in the following residue types are not validated in this section: 0SE

The Z score for a bond length (or angle) is the number of standard deviations the observed value is removed from the expected value. A bond length (or angle) with $|Z| > 5$ is considered an outlier worth inspection. RMSZ is the root-mean-square of all Z scores of the bond lengths (or angles).

Mol	Chain	Bond lengths		Bond angles	
		RMSZ	# Z >5	RMSZ	# Z >5
1	A	0.55	2/6878 (0.0%)	1.15	37/9308 (0.4%)

Chiral center outliers are detected by calculating the chiral volume of a chiral center and verifying if the center is modelled as a planar moiety or with the opposite hand. A planarity outlier is detected by checking planarity of atoms in a peptide group, atoms in a mainchain group or atoms of a sidechain that are expected to be planar.

Mol	Chain	#Chirality outliers	#Planarity outliers
1	A	0	1

All (2) bond length outliers are listed below:

Mol	Chain	Res	Type	Atoms	Z	Observed(Å)	Ideal(Å)
1	A	1042	LEU	CA-C	-7.00	1.46	1.53
1	A	808	LYS	CA-C	-5.24	1.45	1.52

All (37) bond angle outliers are listed below:

Mol	Chain	Res	Type	Atoms	Z	Observed(°)	Ideal(°)
1	A	1092	LEU	N-CA-C	16.16	133.40	112.72
1	A	1046	GLU	N-CA-C	11.07	123.34	111.28
1	A	1092	LEU	CB-CA-C	-9.88	94.16	110.37
1	A	372	VAL	N-CA-C	9.64	121.82	107.75
1	A	808	LYS	N-CA-C	-8.89	101.74	112.59
1	A	478	GLY	N-CA-C	7.95	121.93	111.52
1	A	562	ASP	CA-C-N	7.66	127.38	119.56
1	A	562	ASP	C-N-CA	7.66	127.38	119.56
1	A	836	ASP	N-CA-C	-7.30	98.34	109.95
1	A	834	HIS	N-CA-C	-7.01	97.97	109.40
1	A	373	LEU	CA-C-N	6.79	128.33	119.84

Continued on next page...

Continued from previous page...

Mol	Chain	Res	Type	Atoms	Z	Observed(°)	Ideal(°)
1	A	373	LEU	C-N-CA	6.79	128.33	119.84
1	A	1015	LYS	N-CA-C	-6.51	103.87	110.97
1	A	833	LYS	N-CA-C	6.32	119.44	108.76
1	A	207	LEU	CA-C-N	6.29	126.31	119.89
1	A	207	LEU	C-N-CA	6.29	126.31	119.89
1	A	228	THR	N-CA-C	-6.21	105.87	113.50
1	A	918	GLU	N-CA-C	-6.01	106.10	113.50
1	A	788	ASP	CA-C-N	6.01	126.17	119.32
1	A	788	ASP	C-N-CA	6.01	126.17	119.32
1	A	400	SER	CA-C-N	5.81	125.57	119.76
1	A	400	SER	C-N-CA	5.81	125.57	119.76
1	A	782	SER	N-CA-C	-5.56	100.28	108.79
1	A	760	SER	N-CA-C	5.54	117.13	107.49
1	A	785	VAL	CA-C-N	5.52	125.36	119.28
1	A	785	VAL	C-N-CA	5.52	125.36	119.28
1	A	152	ARG	N-CA-C	-5.50	105.36	111.36
1	A	271	VAL	N-CA-C	5.50	116.59	108.45
1	A	477	ARG	CA-CB-CG	5.50	125.10	114.10
1	A	576	TRP	N-CA-C	5.47	117.05	111.14
1	A	761	SER	N-CA-C	-5.36	104.89	111.75
1	A	371	PRO	CA-C-N	-5.24	116.13	123.10
1	A	371	PRO	C-N-CA	-5.24	116.13	123.10
1	A	227	SER	CB-CA-C	-5.13	110.26	117.23
1	A	809	LYS	CA-C-N	5.12	124.88	119.76
1	A	809	LYS	C-N-CA	5.12	124.88	119.76
1	A	1059	LYS	CA-CB-CG	5.09	124.28	114.10

There are no chirality outliers.

All (1) planarity outliers are listed below:

Mol	Chain	Res	Type	Group
1	A	899	THR	Peptide

5.2 Too-close contacts [\(i\)](#)

In the following table, the Non-H and H(model) columns list the number of non-hydrogen atoms and hydrogen atoms in the chain respectively. The H(added) column lists the number of hydrogen atoms added and optimized by MolProbity. The Clashes column lists the number of clashes within the asymmetric unit, whereas Symm-Clashes lists symmetry-related clashes.

Mol	Chain	Non-H	H(model)	H(added)	Clashes	Symm-Clashes
1	A	6735	0	6755	134	0
2	A	34	0	32	3	0
3	A	1	0	0	0	0
All	All	6770	0	6787	134	0

The all-atom clashscore is defined as the number of clashes found per 1000 atoms (including hydrogen atoms). The all-atom clashscore for this structure is 10.

All (134) close contacts within the same asymmetric unit are listed below, sorted by their clash magnitude.

Atom-1	Atom-2	Interatomic distance (Å)	Clash overlap (Å)
1:A:1035:LEU:HD12	1:A:1048:ILE:HD13	1.49	0.94
1:A:1045:LYS:O	1:A:1049:GLU:HG3	1.69	0.91
1:A:1035:LEU:HB3	1:A:1042:LEU:CD2	2.06	0.85
1:A:564:LEU:HD11	1:A:1048:ILE:HG22	1.58	0.84
1:A:806:SER:O	1:A:807:LYS:CB	2.25	0.82
1:A:642:ALA:O	1:A:646:GLN:HG3	1.80	0.81
1:A:808:LYS:HG3	1:A:833:LYS:HE2	1.64	0.79
1:A:1035:LEU:HB3	1:A:1042:LEU:HD23	1.67	0.77
1:A:751:SER:O	1:A:752:LEU:HD22	1.89	0.73
1:A:149:ALA:O	1:A:153:GLN:HG3	1.90	0.72
1:A:1035:LEU:HB3	1:A:1042:LEU:HD21	1.73	0.71
1:A:382:PHE:CE2	1:A:398:ARG:HD3	2.28	0.69
1:A:1000:LYS:O	1:A:1000:LYS:HG2	1.91	0.69
1:A:745:VAL:HG12	1:A:811:LEU:HD11	1.76	0.68
1:A:564:LEU:HD21	1:A:1048:ILE:HG21	1.76	0.67
1:A:804:MET:HB2	1:A:810:PRO:HG2	1.77	0.66
1:A:272:LEU:HB3	1:A:305:VAL:HG11	1.76	0.66
1:A:662:GLN:OE1	1:A:1030:LEU:HD22	1.95	0.66
1:A:382:PHE:HE2	1:A:398:ARG:HD3	1.61	0.66
1:A:651:LEU:HD22	1:A:655:ASP:HB3	1.77	0.65
1:A:597:LYS:HB2	1:A:603:ILE:HD12	1.77	0.65
1:A:278:ASP:HB2	1:A:784:ARG:HH12	1.62	0.64
1:A:881:ILE:HG23	2:A:1201:OSE:H30	1.79	0.64
1:A:625:GLY:O	1:A:629:GLN:HG3	1.98	0.63
1:A:600:GLN:HG2	1:A:603:ILE:HG13	1.79	0.63
1:A:579:ARG:HD2	1:A:610:LEU:HD11	1.80	0.62
1:A:466:LEU:HD11	1:A:476:ARG:HD3	1.82	0.62
1:A:386:ASN:HB2	1:A:430:ASN:HB3	1.81	0.62
1:A:429:LEU:HB2	1:A:468:LEU:HD21	1.83	0.61
1:A:374:PRO:C	1:A:376:ASN:HA	2.26	0.60
1:A:410:TRP:HB3	1:A:412:VAL:HG12	1.85	0.58

Continued on next page...

Continued from previous page...

Atom-1	Atom-2	Interatomic distance (Å)	Clash overlap (Å)
1:A:364:LYS:NZ	1:A:411:ASN:OD1	2.37	0.57
1:A:890:LYS:HG3	1:A:893:GLN:HE21	1.70	0.57
1:A:983:VAL:HG13	1:A:1082:VAL:HG21	1.88	0.56
1:A:1040:PRO:O	1:A:1042:LEU:HD13	2.04	0.56
1:A:1032:SER:HA	1:A:1048:ILE:HD12	1.87	0.56
1:A:1084:PHE:O	1:A:1088:LEU:HD13	2.06	0.56
1:A:397:ARG:NH2	1:A:417:SER:OG	2.37	0.55
1:A:835:GLY:HA2	1:A:875:LYS:O	2.05	0.55
1:A:890:LYS:HA	1:A:893:GLN:CD	2.31	0.55
1:A:304:HIS:HB2	1:A:823:LEU:HD21	1.88	0.55
1:A:424:PRO:HD2	1:A:427:ALA:HB2	1.89	0.54
1:A:483:HIS:CD2	1:A:510:LYS:HG2	2.42	0.54
1:A:726:THR:HA	1:A:729:LEU:HD12	1.88	0.54
1:A:767:LEU:HD22	1:A:803:VAL:HG23	1.88	0.54
1:A:1078:LYS:O	1:A:1081:THR:OG1	2.18	0.54
1:A:384:GLU:OE2	1:A:398:ARG:NE	2.41	0.54
1:A:929:VAL:HG22	1:A:995:MET:HG2	1.90	0.54
1:A:424:PRO:HG3	1:A:598:TRP:O	2.09	0.53
1:A:605:ALA:O	1:A:609:GLN:HG3	2.09	0.53
1:A:552:ARG:HH22	1:A:581:GLU:CD	2.17	0.52
1:A:374:PRO:O	1:A:376:ASN:HA	2.10	0.52
1:A:939:THR:HB	1:A:945:GLY:HA2	1.92	0.52
1:A:509:ASP:OD2	1:A:512:ASN:HB2	2.10	0.51
1:A:911:LEU:O	1:A:915:SER:OG	2.23	0.51
1:A:905:GLU:HG2	1:A:993:PHE:CZ	2.46	0.51
1:A:983:VAL:HG22	1:A:1082:VAL:HG11	1.92	0.51
1:A:561:THR:O	1:A:591:LYS:NZ	2.45	0.50
1:A:855:TRP:HZ3	1:A:864:LEU:HD11	1.76	0.50
1:A:475:LEU:HD21	1:A:522:ASN:HB2	1.93	0.50
1:A:357:CYS:SG	1:A:359:ARG:HG3	2.52	0.50
1:A:735:GLN:O	1:A:739:ILE:HG12	2.11	0.50
1:A:217:ASN:OD1	1:A:217:ASN:O	2.30	0.49
1:A:777:SER:HB3	1:A:778:GLN:HB2	1.94	0.49
1:A:1043:THR:HG23	1:A:1047:ASP:H	1.78	0.49
1:A:890:LYS:HA	1:A:893:GLN:NE2	2.28	0.49
1:A:1011:ASP:OD1	1:A:1015:LYS:HE3	2.13	0.48
1:A:739:ILE:HD12	1:A:878:MET:HE3	1.95	0.48
1:A:181:VAL:O	1:A:185:MET:HG3	2.12	0.48
1:A:576:TRP:CZ2	1:A:603:ILE:HG23	2.48	0.48
1:A:862:LEU:HB3	1:A:934:GLY:HA3	1.94	0.48
1:A:893:GLN:O	1:A:896:VAL:O	2.32	0.48

Continued on next page...

Continued from previous page...

Atom-1	Atom-2	Interatomic distance (Å)	Clash overlap (Å)
1:A:498:ASN:OD1	1:A:499:ALA:N	2.47	0.47
1:A:890:LYS:HA	1:A:893:GLN:HG2	1.96	0.47
1:A:552:ARG:HH12	1:A:581:GLU:CG	2.27	0.47
1:A:880:GLU:O	2:A:1201:OSE:H28	2.14	0.47
1:A:376:ASN:HB3	1:A:377:THR:C	2.39	0.47
1:A:503:THR:OG1	1:A:708:HIS:O	2.26	0.47
1:A:477:ARG:HA	1:A:520:LEU:HB3	1.98	0.46
1:A:547:MET:HB2	1:A:552:ARG:HH21	1.81	0.46
1:A:995:MET:O	1:A:1005:HIS:HB2	2.15	0.46
1:A:645:VAL:HA	1:A:648:LEU:HD12	1.98	0.46
1:A:177:ARG:NH2	1:A:718:GLU:OE2	2.49	0.46
1:A:706:SER:O	1:A:710:GLN:HB3	2.16	0.46
1:A:221:PHE:O	1:A:222:ILE:HD13	2.17	0.45
1:A:526:PRO:HB2	1:A:527:ILE:H	1.50	0.45
1:A:278:ASP:OD2	1:A:784:ARG:NH2	2.50	0.45
1:A:378:ASP:OD1	1:A:378:ASP:N	2.50	0.45
1:A:565:ASN:HA	1:A:566:PRO:HD3	1.77	0.45
1:A:731:ASP:O	1:A:735:GLN:HG3	2.16	0.45
1:A:775:GLN:OE1	1:A:798:ILE:HD11	2.15	0.45
1:A:552:ARG:HH12	1:A:581:GLU:CD	2.25	0.44
1:A:899:THR:HB	1:A:901:ALA:H	1.82	0.44
1:A:282:VAL:HG22	1:A:283:GLY:N	2.31	0.44
1:A:792:LYS:HB3	1:A:792:LYS:HE3	1.66	0.44
1:A:651:LEU:HD22	1:A:655:ASP:CB	2.47	0.44
1:A:735:GLN:NE2	1:A:784:ARG:HB2	2.33	0.44
1:A:853:SER:O	1:A:856:GLU:HB3	2.18	0.44
1:A:614:ARG:HG2	1:A:617:TRP:HB3	2.00	0.44
1:A:774:LEU:HB3	1:A:779:LEU:HD23	1.99	0.43
1:A:990:ASP:O	1:A:994:VAL:HG23	2.17	0.43
1:A:500:ASP:HB3	1:A:708:HIS:CD2	2.53	0.43
1:A:625:GLY:HA2	1:A:1026:LEU:HD23	2.00	0.43
1:A:774:LEU:HD23	1:A:774:LEU:HA	1.85	0.43
1:A:1032:SER:HA	1:A:1048:ILE:CD1	2.49	0.43
1:A:865:LEU:HD21	1:A:882:VAL:HG11	1.99	0.43
1:A:368:ILE:HG23	1:A:410:TRP:HZ3	1.84	0.43
1:A:787:TYR:CE1	1:A:880:GLU:HB2	2.54	0.43
1:A:857:THR:OG1	1:A:858:GLU:OE1	2.36	0.42
1:A:600:GLN:HE21	1:A:600:GLN:HB2	1.74	0.42
1:A:278:ASP:CB	1:A:784:ARG:HH12	2.31	0.42
1:A:1035:LEU:HD12	1:A:1048:ILE:CD1	2.35	0.42
1:A:963:ILE:HD12	2:A:1201:OSE:C19	2.50	0.42

Continued on next page...

Continued from previous page...

Atom-1	Atom-2	Interatomic distance (Å)	Clash overlap (Å)
1:A:198:MET:SD	1:A:282:VAL:HG11	2.60	0.42
1:A:697:TRP:HZ2	1:A:735:GLN:HB3	1.84	0.41
1:A:632:ASP:OD1	1:A:632:ASP:C	2.63	0.41
1:A:981:GLU:C	1:A:982:ARG:HG2	2.44	0.41
1:A:182:THR:HB	1:A:183:PRO:HD3	2.02	0.41
1:A:498:ASN:OD1	1:A:1036:MET:O	2.37	0.41
1:A:390:GLY:C	1:A:392:GLN:H	2.28	0.41
1:A:768:LYS:O	1:A:772:GLU:HG3	2.20	0.41
1:A:389:HIS:O	1:A:392:GLN:HB3	2.21	0.41
1:A:147:SER:HA	1:A:319:ARG:NH2	2.36	0.41
1:A:476:ARG:HG2	1:A:520:LEU:HD22	2.02	0.41
1:A:557:ALA:O	1:A:561:THR:HG23	2.20	0.41
1:A:607:THR:O	1:A:610:LEU:HB2	2.20	0.41
1:A:739:ILE:O	1:A:743:GLN:HG3	2.21	0.41
1:A:1058:GLY:O	1:A:1059:LYS:HD2	2.21	0.41
1:A:641:ARG:HE	1:A:670:GLU:CD	2.29	0.40
1:A:702:GLU:O	1:A:706:SER:HB3	2.21	0.40
1:A:308:ASP:N	1:A:308:ASP:OD1	2.54	0.40
1:A:997:THR:OG1	1:A:1001:LYS:O	2.28	0.40
1:A:180:LEU:C	1:A:183:PRO:HD2	2.46	0.40
1:A:1084:PHE:CZ	1:A:1088:LEU:HD11	2.57	0.40

There are no symmetry-related clashes.

5.3 Torsion angles [i](#)

5.3.1 Protein backbone [i](#)

In the following table, the Percentiles column shows the percent Ramachandran outliers of the chain as a percentile score with respect to all X-ray entries followed by that with respect to entries of similar resolution.

The Analysed column shows the number of residues for which the backbone conformation was analysed, and the total number of residues.

Mol	Chain	Analysed	Favoured	Allowed	Outliers	Percentiles
1	A	816/966 (84%)	764 (94%)	45 (6%)	7 (1%)	14 34

All (7) Ramachandran outliers are listed below:

Mol	Chain	Res	Type
1	A	807	LYS
1	A	1040	PRO
1	A	526	PRO
1	A	1045	LYS
1	A	862	LEU
1	A	897	GLY
1	A	371	PRO

5.3.2 Protein sidechains [i](#)

In the following table, the Percentiles column shows the percent sidechain outliers of the chain as a percentile score with respect to all X-ray entries followed by that with respect to entries of similar resolution.

The Analysed column shows the number of residues for which the sidechain conformation was analysed, and the total number of residues.

Mol	Chain	Analysed	Rotameric	Outliers	Percentiles
1	A	744/864 (86%)	723 (97%)	21 (3%)	38 63

All (21) residues with a non-rotameric sidechain are listed below:

Mol	Chain	Res	Type
1	A	229	THR
1	A	233	ILE
1	A	381	VAL
1	A	600	GLN
1	A	628	MET
1	A	638	GLU
1	A	777	SER
1	A	806	SER
1	A	823	LEU
1	A	832	PHE
1	A	887	THR
1	A	896	VAL
1	A	907	LEU
1	A	959	ASN
1	A	983	VAL
1	A	1026	LEU
1	A	1032	SER
1	A	1039	MET
1	A	1042	LEU
1	A	1076	ARG

Continued on next page...

Continued from previous page...

Mol	Chain	Res	Type
1	A	1088	LEU

Sometimes sidechains can be flipped to improve hydrogen bonding and reduce clashes. All (11) such sidechains are listed below:

Mol	Chain	Res	Type
1	A	483	HIS
1	A	525	HIS
1	A	600	GLN
1	A	634	ASN
1	A	710	GLN
1	A	776	ASN
1	A	825	ASN
1	A	893	GLN
1	A	908	ASN
1	A	959	ASN
1	A	1023	HIS

5.3.3 RNA [i](#)

There are no RNA molecules in this entry.

5.4 Non-standard residues in protein, DNA, RNA chains [i](#)

There are no non-standard protein/DNA/RNA residues in this entry.

5.5 Carbohydrates [i](#)

There are no oligosaccharides in this entry.

5.6 Ligand geometry [i](#)

1 ligand is modelled in this entry.

In the following table, the Counts columns list the number of bonds (or angles) for which Mogul statistics could be retrieved, the number of bonds (or angles) that are observed in the model and the number of bonds (or angles) that are defined in the Chemical Component Dictionary. The Link column lists molecule types, if any, to which the group is linked. The Z score for a bond length (or angle) is the number of standard deviations the observed value is removed from the expected value. A bond length (or angle) with $|Z| > 2$ is considered an outlier worth inspection. RMSZ is the root-mean-square of all Z scores of the bond lengths (or angles).

Mol	Type	Chain	Res	Link	Bond lengths			Bond angles		
					Counts	RMSZ	# Z > 2	Counts	RMSZ	# Z > 2
2	0SE	A	1201	-	38,38,38	0.93	2 (5%)	53,55,55	2.11	17 (32%)

In the following table, the Chirals column lists the number of chiral outliers, the number of chiral centers analysed, the number of these observed in the model and the number defined in the Chemical Component Dictionary. Similar counts are reported in the Torsion and Rings columns. '-' means no outliers of that kind were identified.

Mol	Type	Chain	Res	Link	Chirals	Torsions	Rings
2	0SE	A	1201	-	-	5/18/36/36	0/5/5/5

All (2) bond length outliers are listed below:

Mol	Chain	Res	Type	Atoms	Z	Observed(Å)	Ideal(Å)
2	A	1201	0SE	C24-N27	2.44	1.38	1.33
2	A	1201	0SE	C14-N20	-2.26	1.34	1.37

All (17) bond angle outliers are listed below:

Mol	Chain	Res	Type	Atoms	Z	Observed(°)	Ideal(°)
2	A	1201	0SE	C19-N20-C14	6.68	121.13	116.56
2	A	1201	0SE	N18-C17-N28	5.84	121.34	117.17
2	A	1201	0SE	C5-C6-N7	-4.09	104.45	111.08
2	A	1201	0SE	C21-C26-N25	-3.39	118.89	124.28
2	A	1201	0SE	C21-C22-N23	-3.27	119.08	124.28
2	A	1201	0SE	C6-C5-C4	-3.16	103.98	111.08
2	A	1201	0SE	C11-N16-C15	2.89	122.25	118.17
2	A	1201	0SE	C5-C4-C2	-2.78	108.78	113.80
2	A	1201	0SE	C26-N25-C24	2.60	120.87	116.29
2	A	1201	0SE	C22-N23-C24	2.60	120.86	116.29
2	A	1201	0SE	N25-C24-N23	-2.58	121.90	124.54
2	A	1201	0SE	N20-C19-N18	-2.55	123.10	126.49
2	A	1201	0SE	C13-C14-N20	2.42	122.22	118.69
2	A	1201	0SE	C26-C21-C22	2.41	118.40	114.73
2	A	1201	0SE	C17-N18-C19	2.34	121.52	115.84
2	A	1201	0SE	C12-C13-C14	-2.28	118.08	120.80
2	A	1201	0SE	C12-C11-N16	-2.23	120.27	123.07

There are no chirality outliers.

All (5) torsion outliers are listed below:

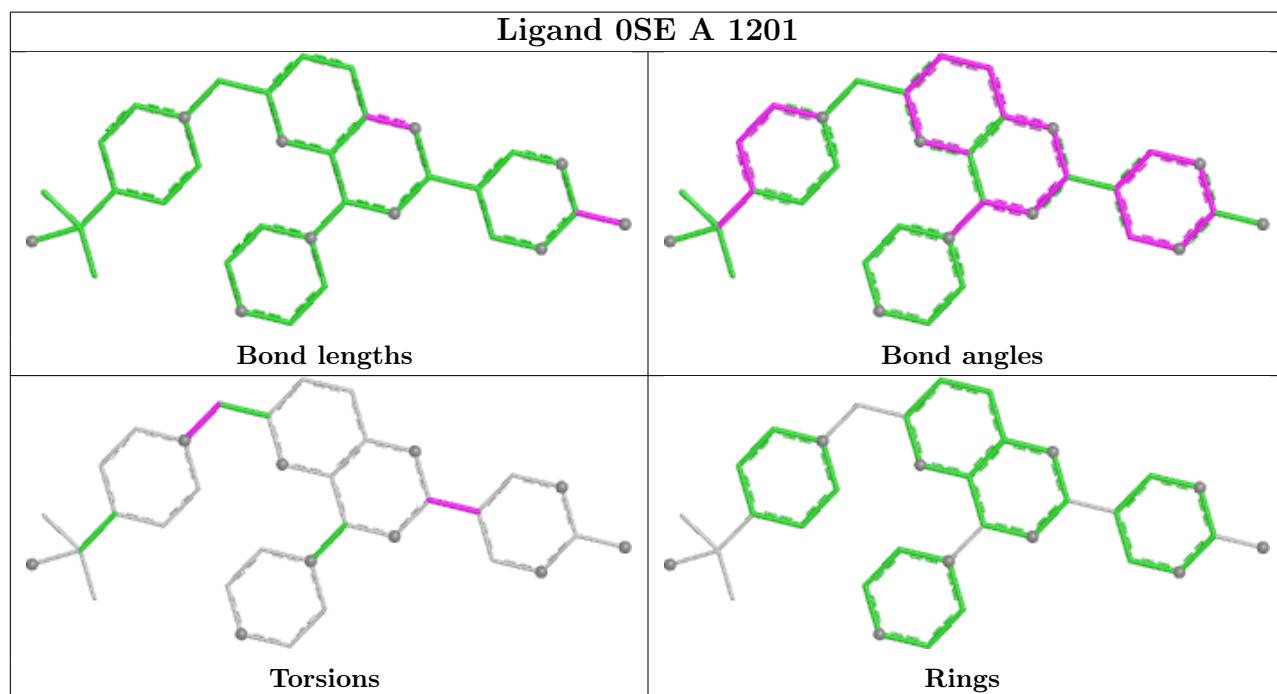
Mol	Chain	Res	Type	Atoms
2	A	1201	0SE	C11-C10-N7-C6
2	A	1201	0SE	N20-C19-C21-C26
2	A	1201	0SE	N20-C19-C21-C22
2	A	1201	0SE	N18-C19-C21-C26
2	A	1201	0SE	N18-C19-C21-C22

There are no ring outliers.

1 monomer is involved in 3 short contacts:

Mol	Chain	Res	Type	Clashes	Symm-Clashes
2	A	1201	0SE	3	0

The following is a two-dimensional graphical depiction of Mogul quality analysis of bond lengths, bond angles, torsion angles, and ring geometry for all instances of the Ligand of Interest. In addition, ligands with molecular weight > 250 and outliers as shown on the validation Tables will also be included. For torsion angles, if less than 5% of the Mogul distribution of torsion angles is within 10 degrees of the torsion angle in question, then that torsion angle is considered an outlier. Any bond that is central to one or more torsion angles identified as an outlier by Mogul will be highlighted in the graph. For rings, the root-mean-square deviation (RMSD) between the ring in question and similar rings identified by Mogul is calculated over all ring torsion angles. If the average RMSD is greater than 60 degrees and the minimal RMSD between the ring in question and any Mogul-identified rings is also greater than 60 degrees, then that ring is considered an outlier. The outliers are highlighted in purple. The color gray indicates Mogul did not find sufficient equivalents in the CSD to analyse the geometry.



5.7 Other polymers [i](#)

There are no such residues in this entry.

5.8 Polymer linkage issues [i](#)

There are no chain breaks in this entry.

6 Fit of model and data [i](#)

6.1 Protein, DNA and RNA chains [i](#)

In the following table, the column labelled ‘#RSRZ > 2’ contains the number (and percentage) of RSRZ outliers, followed by percent RSRZ outliers for the chain as percentile scores relative to all X-ray entries and entries of similar resolution. The OWAB column contains the minimum, median, 95th percentile and maximum values of the occupancy-weighted average B-factor per residue. The column labelled ‘Q < 0.9’ lists the number of (and percentage) of residues with an average occupancy less than 0.9.

Mol	Chain	Analysed	<RSRZ>	#RSRZ>2	OWAB(Å ²)	Q<0.9
1	A	834/966 (86%)	0.18	13 (1%) 70 62	42, 96, 169, 235	0

All (13) RSRZ outliers are listed below:

Mol	Chain	Res	Type	RSRZ
1	A	373	LEU	3.4
1	A	754	ALA	3.1
1	A	527	ILE	2.9
1	A	758	ASP	2.8
1	A	1093	GLY	2.7
1	A	823	LEU	2.7
1	A	1040	PRO	2.6
1	A	525	HIS	2.5
1	A	929	VAL	2.4
1	A	275	CYS	2.3
1	A	435	CYS	2.2
1	A	220	ILE	2.0
1	A	372	VAL	2.0

6.2 Non-standard residues in protein, DNA, RNA chains [i](#)

There are no non-standard protein/DNA/RNA residues in this entry.

6.3 Carbohydrates [i](#)

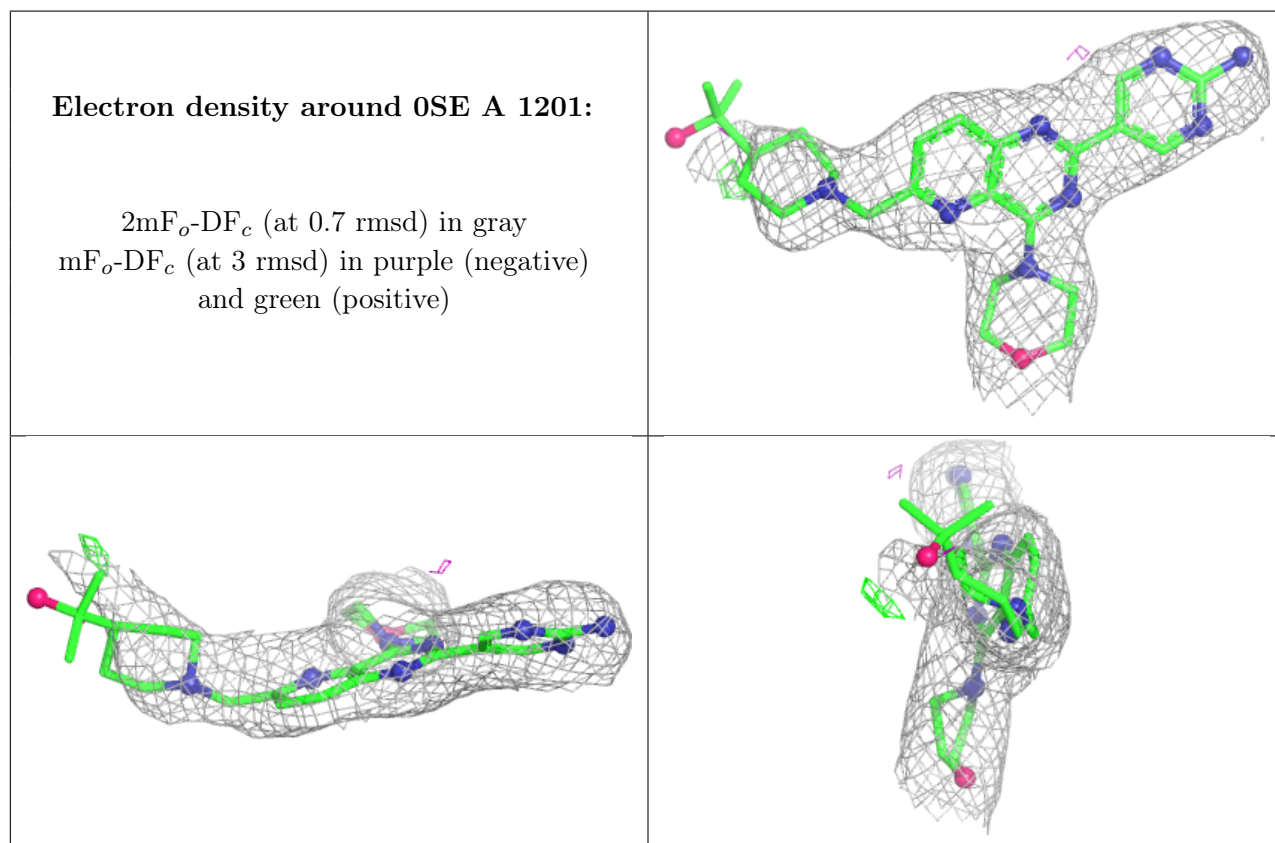
There are no oligosaccharides in this entry.

6.4 Ligands [i](#)

In the following table, the Atoms column lists the number of modelled atoms in the group and the number defined in the chemical component dictionary. The B-factors column lists the minimum, median, 95th percentile and maximum values of B factors of atoms in the group. The column labelled 'Q< 0.9' lists the number of atoms with occupancy less than 0.9.

Mol	Type	Chain	Res	Atoms	RSCC	RSR	B-factors(Å ²)	Q<0.9
2	OSE	A	1201	34/34	0.90	0.12	80,91,120,124	0

The following is a graphical depiction of the model fit to experimental electron density of all instances of the Ligand of Interest. In addition, ligands with molecular weight > 250 and outliers as shown on the geometry validation Tables will also be included. Each fit is shown from different orientation to approximate a three-dimensional view.



6.5 Other polymers [i](#)

There are no such residues in this entry.