



Full wwPDB X-ray Structure Validation Report ⓘ

Oct 22, 2024 – 07:04 AM EDT

PDB ID : 4DW1
Title : Crystal structure of the ATP-gated P2X4 ion channel in the ATP-bound, open state at 2.8 Angstroms
Authors : Hattori, M.; Gouaux, E.
Deposited on : 2012-02-24
Resolution : 2.80 Å(reported)

This is a Full wwPDB X-ray Structure Validation Report for a publicly released PDB entry.

We welcome your comments at validation@mail.wwpdb.org

A user guide is available at

<https://www.wwpdb.org/validation/2017/XrayValidationReportHelp>

with specific help available everywhere you see the ⓘ symbol.

The types of validation reports are described at

<http://www.wwpdb.org/validation/2017/FAQs#types>.

The following versions of software and data (see [references ⓘ](#)) were used in the production of this report:

MolProbity : 4.02b-467
Mogul : 2022.3.0, CSD as543be (2022)
Xtrriage (Phenix) : 1.20.1
EDS : 3.0
buster-report : 1.1.7 (2018)
Percentile statistics : 20231227.v01 (using entries in the PDB archive December 27th 2023)
CCP4 : 9.0.003 (Gargrove)
Density-Fitness : 1.0.11
Ideal geometry (proteins) : Engh & Huber (2001)
Ideal geometry (DNA, RNA) : Parkinson et al. (1996)
Validation Pipeline (wwPDB-VP) : 2.39

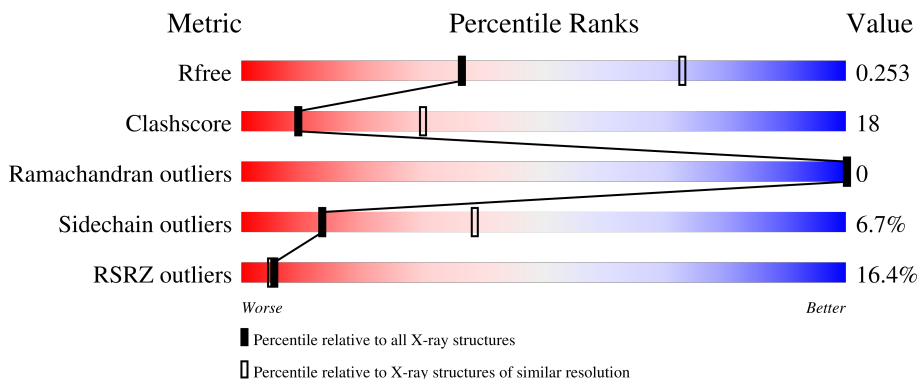
1 Overall quality at a glance

The following experimental techniques were used to determine the structure:

X-RAY DIFFRACTION

The reported resolution of this entry is 2.80 Å.

Percentile scores (ranging between 0-100) for global validation metrics of the entry are shown in the following graphic. The table shows the number of entries on which the scores are based.



Metric	Whole archive (#Entries)	Similar resolution (#Entries, resolution range(Å))
R_{free}	164625	3657 (2.80-2.80)
Clashscore	180529	4123 (2.80-2.80)
Ramachandran outliers	177936	4071 (2.80-2.80)
Sidechain outliers	177891	4073 (2.80-2.80)
RSRZ outliers	164620	3659 (2.80-2.80)

The table below summarises the geometric issues observed across the polymeric chains and their fit to the electron density. The red, orange, yellow and green segments of the lower bar indicate the fraction of residues that contain outliers for ≥ 3 , 2, 1 and 0 types of geometric quality criteria respectively. A grey segment represents the fraction of residues that are not modelled. The numeric value for each fraction is indicated below the corresponding segment, with a dot representing fractions $\leq 5\%$. The upper red bar (where present) indicates the fraction of residues that have poor fit to the electron density. The numeric value is given above the bar.

Mol	Chain	Length	Quality of chain
1	A	340	
2	B	6	

2 Entry composition [i](#)

There are 6 unique types of molecules in this entry. The entry contains 2669 atoms, of which 0 are hydrogens and 0 are deuteriums.

In the tables below, the ZeroOcc column contains the number of atoms modelled with zero occupancy, the AltConf column contains the number of residues with at least one atom in alternate conformation and the Trace column contains the number of residues modelled with at most 2 atoms.

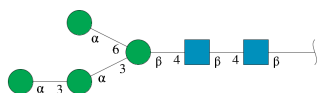
- Molecule 1 is a protein called P2X purinoceptor.

Mol	Chain	Residues	Atoms					ZeroOcc	AltConf	Trace
			Total	C	N	O	S			
1	A	324	2448	1551	415	466	16	0	0	0

There are 5 discrepancies between the modelled and reference sequences:

Chain	Residue	Modelled	Actual	Comment	Reference
A	26	GLY	-	expression tag	UNP Q6NYR1
A	27	SER	-	expression tag	UNP Q6NYR1
A	78	LYS	ASN	engineered mutation	UNP Q6NYR1
A	187	ARG	ASN	engineered mutation	UNP Q6NYR1
A	252	ARG	HIS	engineered mutation	UNP Q6NYR1

- Molecule 2 is an oligosaccharide called alpha-D-mannopyranose-(1-3)-alpha-D-mannopyranose-(1-3)-[alpha-D-mannopyranose-(1-6)]beta-D-mannopyranose-(1-4)-2-acetamido-2-deoxy-beta-D-glucopyranose-(1-4)-2-acetamido-2-deoxy-beta-D-glucopyranose.



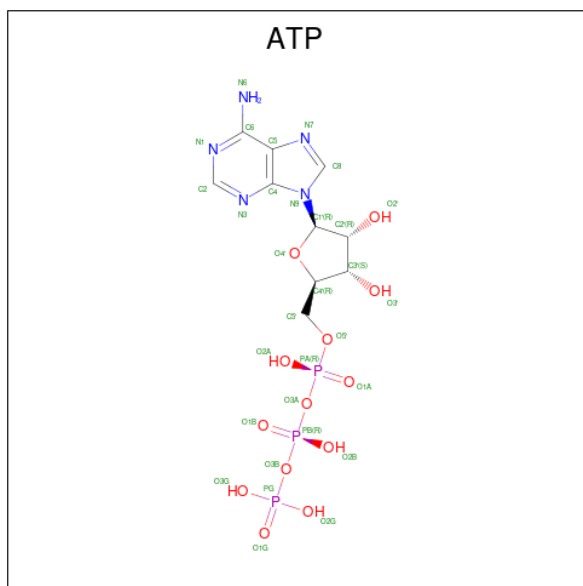
Mol	Chain	Residues	Atoms				ZeroOcc	AltConf	Trace
			Total	C	N	O			
2	B	6	72	40	2	30	0	0	0

- Molecule 3 is 2-acetamido-2-deoxy-beta-D-glucopyranose (three-letter code: NAG) (formula: C₈H₁₅NO₆).



Mol	Chain	Residues	Atoms				ZeroOcc	AltConf
			Total	C	N	O		
3	A	1	14	8	1	5	0	0

- Molecule 4 is ADENOSINE-5'-TRIPHOSPHATE (three-letter code: ATP) (formula: $C_{10}H_{16}N_5O_{13}P_3$).



Mol	Chain	Residues	Atoms					ZeroOcc	AltConf
			Total	C	N	O	P		
4	A	1	31	10	5	13	3	0	0

- Molecule 5 is GLYCEROL (three-letter code: GOL) (formula: $C_3H_8O_3$).



Mol	Chain	Residues	Atoms	ZeroOcc	AltConf
5	A	1	Total C O 6 3 3	0	0
5	A	1	Total C O 6 3 3	0	0

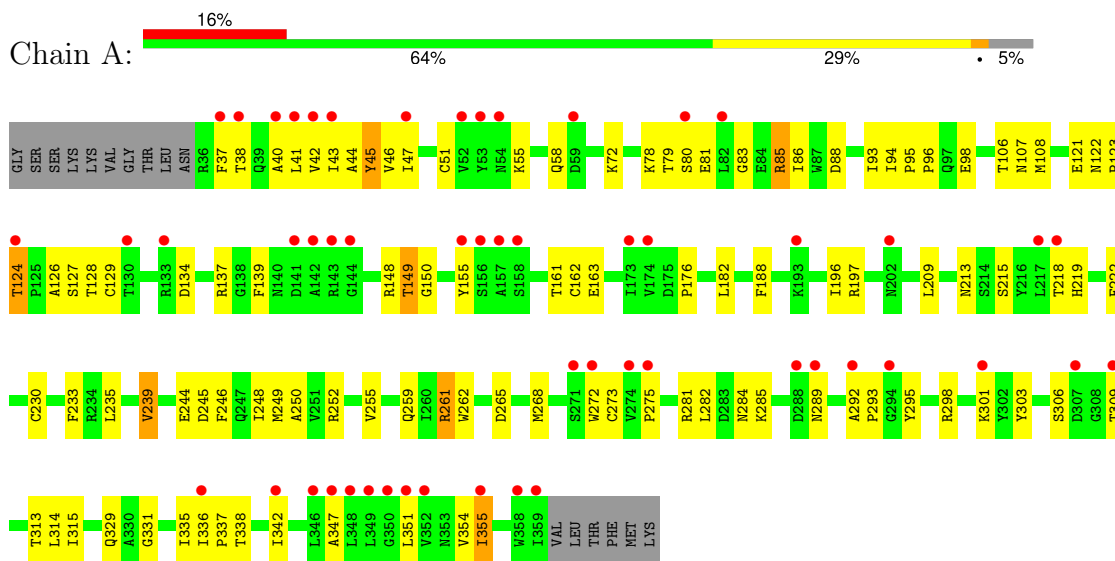
- Molecule 6 is water.

Mol	Chain	Residues	Atoms	ZeroOcc	AltConf
6	A	92	Total O 92 92	0	0

3 Residue-property plots [i](#)

These plots are drawn for all protein, RNA, DNA and oligosaccharide chains in the entry. The first graphic for a chain summarises the proportions of the various outlier classes displayed in the second graphic. The second graphic shows the sequence view annotated by issues in geometry and electron density. Residues are color-coded according to the number of geometric quality criteria for which they contain at least one outlier: green = 0, yellow = 1, orange = 2 and red = 3 or more. A red dot above a residue indicates a poor fit to the electron density ($RSRZ > 2$). Stretches of 2 or more consecutive residues without any outlier are shown as a green connector. Residues present in the sample, but not in the model, are shown in grey.

- Molecule 1: P2X purinoceptor



- Molecule 2: alpha-D-mannopyranose-(1-3)-alpha-D-mannopyranose-(1-3)-[alpha-D-mannopyranose-(1-6)]beta-D-mannopyranose-(1-4)-2-acetamido-2-deoxy-beta-D-glucopyranose-(1-4)-2-acetamido-2-deoxy-beta-D-glucopyranose



4 Data and refinement statistics

Property	Value	Source
Space group	H 3 2	Depositor
Cell constants a, b, c, α , β , γ	128.79Å 128.79Å 252.07Å 90.00° 90.00° 120.00°	Depositor
Resolution (Å)	45.94 – 2.80 45.94 – 2.80	Depositor EDS
% Data completeness (in resolution range)	99.0 (45.94-2.80) 98.8 (45.94-2.80)	Depositor EDS
R_{merge}	(Not available)	Depositor
R_{sym}	(Not available)	Depositor
$\langle I/\sigma(I) \rangle$ ¹	2.42 (at 2.81Å)	Xtrriage
Refinement program	PHENIX (phenix.refine: 1.7_650)	Depositor
R, R_{free}	0.208 , 0.254 0.208 , 0.253	Depositor DCC
R_{free} test set	1016 reflections (5.10%)	wwPDB-VP
Wilson B-factor (Å ²)	83.2	Xtrriage
Anisotropy	0.232	Xtrriage
Bulk solvent k_{sol} (e/Å ³), B_{sol} (Å ²)	0.33 , 79.2	EDS
L-test for twinning ²	$\langle L \rangle = 0.49$, $\langle L^2 \rangle = 0.32$	Xtrriage
Estimated twinning fraction	No twinning to report.	Xtrriage
F_o, F_c correlation	0.93	EDS
Total number of atoms	2669	wwPDB-VP
Average B, all atoms (Å ²)	89.0	wwPDB-VP

Xtrriage's analysis on translational NCS is as follows: *The largest off-origin peak in the Patterson function is 5.44% of the height of the origin peak. No significant pseudotranslation is detected.*

¹Intensities estimated from amplitudes.

²Theoretical values of $\langle |L| \rangle$, $\langle L^2 \rangle$ for acentric reflections are 0.5, 0.333 respectively for untwinned datasets, and 0.375, 0.2 for perfectly twinned datasets.

5 Model quality [i](#)

5.1 Standard geometry [i](#)

Bond lengths and bond angles in the following residue types are not validated in this section: GOL, NAG, ATP, BMA, MAN

The Z score for a bond length (or angle) is the number of standard deviations the observed value is removed from the expected value. A bond length (or angle) with $|Z| > 5$ is considered an outlier worth inspection. RMSZ is the root-mean-square of all Z scores of the bond lengths (or angles).

Mol	Chain	Bond lengths		Bond angles	
		RMSZ	# Z >5	RMSZ	# Z >5
1	A	0.46	0/2502	0.66	0/3414

Chiral center outliers are detected by calculating the chiral volume of a chiral center and verifying if the center is modelled as a planar moiety or with the opposite hand. A planarity outlier is detected by checking planarity of atoms in a peptide group, atoms in a mainchain group or atoms of a sidechain that are expected to be planar.

Mol	Chain	#Chirality outliers	#Planarity outliers
1	A	0	1

There are no bond length outliers.

There are no bond angle outliers.

There are no chirality outliers.

All (1) planarity outliers are listed below:

Mol	Chain	Res	Type	Group
1	A	149	THR	Peptide

5.2 Too-close contacts [i](#)

In the following table, the Non-H and H(model) columns list the number of non-hydrogen atoms and hydrogen atoms in the chain respectively. The H(added) column lists the number of hydrogen atoms added and optimized by MolProbity. The Clashes column lists the number of clashes within the asymmetric unit, whereas Symm-Clashes lists symmetry-related clashes.

Mol	Chain	Non-H	H(model)	H(added)	Clashes	Symm-Clashes
1	A	2448	0	2303	83	0
2	B	72	0	61	4	0

Continued on next page...

Continued from previous page...

Mol	Chain	Non-H	H(model)	H(added)	Clashes	Symm-Clashes
3	A	14	0	13	0	0
4	A	31	0	12	3	0
5	A	12	0	16	2	0
6	A	92	0	0	4	0
All	All	2669	0	2405	88	0

The all-atom clashscore is defined as the number of clashes found per 1000 atoms (including hydrogen atoms). The all-atom clashscore for this structure is 18.

All (88) close contacts within the same asymmetric unit are listed below, sorted by their clash magnitude.

Atom-1	Atom-2	Interatomic distance (Å)	Clash overlap (Å)
1:A:351:LEU:O	1:A:355:ILE:HB	1.61	0.98
1:A:37:PHE:O	1:A:41:LEU:HB2	1.69	0.91
1:A:40:ALA:O	1:A:44:ALA:HB3	1.71	0.90
2:B:2:NAG:O3	2:B:3:BMA:H2	1.73	0.89
1:A:85:ARG:HG2	1:A:85:ARG:HH11	1.42	0.84
1:A:85:ARG:HH11	1:A:85:ARG:CG	1.91	0.83
1:A:249:MET:HE2	1:A:281:ARG:HD2	1.60	0.82
1:A:124:THR:HG22	1:A:127:SER:H	1.47	0.80
1:A:41:LEU:O	1:A:45:TYR:HB3	1.83	0.79
2:B:2:NAG:H81	2:B:5:MAN:H2	1.68	0.73
1:A:40:ALA:O	1:A:44:ALA:CB	2.35	0.73
1:A:219:HIS:HD2	6:A:656:HOH:O	1.69	0.73
1:A:239:VAL:HG23	1:A:244:GLU:HB2	1.75	0.67
1:A:215:SER:O	1:A:218:THR:HB	1.94	0.67
1:A:123:PRO:HD3	1:A:155:TYR:CE1	2.30	0.67
1:A:121:GLU:O	1:A:161:THR:HG21	2.01	0.60
1:A:298:ARG:NH2	4:A:508:ATP:O2G	2.36	0.59
1:A:338:THR:O	1:A:342:ILE:HG13	2.02	0.58
1:A:255:VAL:HG12	1:A:282:LEU:HB2	1.86	0.58
1:A:79:THR:O	1:A:81:GLU:HA	2.05	0.57
1:A:106:THR:O	1:A:182:LEU:HB2	2.05	0.56
1:A:41:LEU:O	1:A:45:TYR:CB	2.52	0.56
1:A:42:VAL:HG23	1:A:43:ILE:H	1.72	0.55
1:A:106:THR:HB	1:A:250:ALA:HB1	1.90	0.53
1:A:292:ALA:N	1:A:293:PRO:HD3	2.24	0.53
1:A:139:PHE:HD1	1:A:148:ARG:HD2	1.73	0.53
1:A:85:ARG:HG2	1:A:85:ARG:NH1	2.20	0.53
1:A:313:THR:HG22	1:A:315:ILE:CD1	2.40	0.52
1:A:107:ASN:ND2	1:A:176:PRO:HB2	2.26	0.51

Continued on next page...

Continued from previous page...

Atom-1	Atom-2	Interatomic distance (Å)	Clash overlap (Å)
1:A:78:LYS:HA	1:A:83:GLY:O	2.11	0.51
1:A:93:ILE:C	1:A:94:ILE:HD13	2.31	0.51
1:A:176:PRO:HG2	1:A:252:ARG:HE	1.76	0.51
2:B:2:NAG:C8	2:B:5:MAN:H2	2.39	0.51
1:A:149:THR:N	1:A:150:GLY:HA2	2.24	0.50
1:A:284:ASN:HA	6:A:660:HOH:O	2.10	0.50
1:A:38:THR:O	1:A:42:VAL:HG22	2.11	0.50
1:A:150:GLY:HA2	6:A:682:HOH:O	2.12	0.49
1:A:249:MET:HE2	1:A:281:ARG:CD	2.38	0.49
1:A:245:ASP:HB3	1:A:248:ILE:HG13	1.95	0.49
1:A:124:THR:HG22	1:A:127:SER:N	2.21	0.49
1:A:124:THR:O	1:A:128:THR:HG23	2.13	0.48
1:A:124:THR:CG2	1:A:126:ALA:H	2.27	0.48
1:A:335:ILE:O	1:A:338:THR:HB	2.13	0.48
1:A:42:VAL:HG23	1:A:43:ILE:N	2.28	0.48
1:A:315:ILE:HD12	1:A:315:ILE:N	2.29	0.48
1:A:149:THR:OG1	1:A:163:GLU:HB3	2.14	0.47
4:A:508:ATP:O2B	5:A:510:GOL:H2	2.14	0.47
1:A:121:GLU:HB2	1:A:161:THR:CG2	2.44	0.46
1:A:161:THR:CG2	1:A:162:CYS:N	2.79	0.46
1:A:176:PRO:CG	1:A:252:ARG:HE	2.29	0.46
1:A:239:VAL:HG11	1:A:246:PHE:HD1	1.80	0.46
1:A:301:LYS:HE3	1:A:303:TYR:OH	2.16	0.45
1:A:351:LEU:HA	1:A:354:VAL:CB	2.46	0.45
1:A:347:ALA:O	1:A:351:LEU:HG	2.17	0.45
1:A:88:ASP:OD1	1:A:88:ASP:C	2.56	0.44
1:A:261:ARG:HE	1:A:261:ARG:HB2	1.49	0.44
1:A:46:VAL:HG23	1:A:47:ILE:HD13	2.00	0.44
1:A:58:GLN:OE1	1:A:331:GLY:HA3	2.18	0.44
1:A:272:TRP:O	1:A:273:CYS:HB3	2.18	0.44
1:A:124:THR:HG23	1:A:126:ALA:H	1.83	0.44
1:A:51:CYS:O	1:A:55:LYS:HA	2.19	0.43
1:A:314:LEU:C	1:A:315:ILE:HD12	2.39	0.43
1:A:262:TRP:CH2	1:A:275:PRO:HD3	2.53	0.43
1:A:95:PRO:HB2	1:A:96:PRO:CD	2.49	0.43
1:A:259:GLN:HB2	1:A:261:ARG:NH2	2.34	0.43
1:A:222:PHE:HA	1:A:230:CYS:HB3	2.01	0.42
1:A:272:TRP:O	1:A:273:CYS:CB	2.67	0.42
1:A:107:ASN:O	1:A:108:MET:HG3	2.20	0.42
1:A:85:ARG:CG	1:A:85:ARG:NH1	2.62	0.42
1:A:233:PHE:N	1:A:233:PHE:CD2	2.87	0.42

Continued on next page...

Continued from previous page...

Atom-1	Atom-2	Interatomic distance (Å)	Clash overlap (Å)
1:A:121:GLU:N	1:A:161:THR:HG21	2.34	0.42
1:A:265:ASP:CB	1:A:272:TRP:HZ3	2.33	0.42
1:A:188:PHE:HB2	1:A:235:LEU:HD12	2.01	0.42
1:A:272:TRP:CG	1:A:273:CYS:N	2.88	0.42
1:A:80:SER:HA	1:A:81:GLU:HA	1.63	0.41
1:A:85:ARG:NH1	1:A:86:ILE:O	2.53	0.41
1:A:295:TYR:HD1	5:A:509:GOL:O2	2.03	0.41
1:A:129:CYS:HB2	1:A:134:ASP:HB2	2.02	0.41
1:A:313:THR:HG22	1:A:315:ILE:HD12	2.03	0.41
2:B:2:NAG:O3	2:B:3:BMA:C2	2.57	0.41
1:A:123:PRO:HD3	1:A:155:TYR:CD1	2.55	0.41
1:A:94:ILE:HD13	1:A:94:ILE:N	2.36	0.40
1:A:196:ILE:O	1:A:196:ILE:HG13	2.20	0.40
1:A:289:ASN:ND2	6:A:670:HOH:O	2.54	0.40
1:A:122:ASN:HA	1:A:123:PRO:HD3	1.95	0.40
1:A:222:PHE:HB2	1:A:230:CYS:O	2.21	0.40
1:A:336:ILE:HB	1:A:337:PRO:CD	2.50	0.40
1:A:298:ARG:HH22	4:A:508:ATP:PG	2.45	0.40

There are no symmetry-related clashes.

5.3 Torsion angles [i](#)

5.3.1 Protein backbone [i](#)

In the following table, the Percentiles column shows the percent Ramachandran outliers of the chain as a percentile score with respect to all X-ray entries followed by that with respect to entries of similar resolution.

The Analysed column shows the number of residues for which the backbone conformation was analysed, and the total number of residues.

Mol	Chain	Analysed	Favoured	Allowed	Outliers	Percentiles
1	A	322/340 (95%)	303 (94%)	19 (6%)	0	100 100

There are no Ramachandran outliers to report.

5.3.2 Protein sidechains [i](#)

In the following table, the Percentiles column shows the percent sidechain outliers of the chain as a percentile score with respect to all X-ray entries followed by that with respect to entries of similar

resolution.

The Analysed column shows the number of residues for which the sidechain conformation was analysed, and the total number of residues.

Mol	Chain	Analysed	Rotameric	Outliers	Percentiles	
1	A	255/298 (86%)	238 (93%)	17 (7%)	13	38

All (17) residues with a non-rotameric sidechain are listed below:

Mol	Chain	Res	Type
1	A	45	TYR
1	A	72	LYS
1	A	85	ARG
1	A	98	GLU
1	A	124	THR
1	A	137	ARG
1	A	197	ARG
1	A	209	LEU
1	A	213	ASN
1	A	239	VAL
1	A	261	ARG
1	A	268	MET
1	A	285	LYS
1	A	306	SER
1	A	309	THR
1	A	329	GLN
1	A	355	ILE

Sometimes sidechains can be flipped to improve hydrogen bonding and reduce clashes. All (1) such sidechains are listed below:

Mol	Chain	Res	Type
1	A	39	GLN

5.3.3 RNA [i](#)

There are no RNA molecules in this entry.

5.4 Non-standard residues in protein, DNA, RNA chains [i](#)

There are no non-standard protein/DNA/RNA residues in this entry.

5.5 Carbohydrates i

6 monosaccharides are modelled in this entry.

In the following table, the Counts columns list the number of bonds (or angles) for which Mogul statistics could be retrieved, the number of bonds (or angles) that are observed in the model and the number of bonds (or angles) that are defined in the Chemical Component Dictionary. The Link column lists molecule types, if any, to which the group is linked. The Z score for a bond length (or angle) is the number of standard deviations the observed value is removed from the expected value. A bond length (or angle) with $|Z| > 2$ is considered an outlier worth inspection. RMSZ is the root-mean-square of all Z scores of the bond lengths (or angles).

Mol	Type	Chain	Res	Link	Bond lengths			Bond angles		
					Counts	RMSZ	# Z > 2	Counts	RMSZ	# Z > 2
2	NAG	B	1	1,2	14,14,15	0.66	0	17,19,21	1.32	2 (11%)
2	NAG	B	2	2	14,14,15	0.59	0	17,19,21	1.57	3 (17%)
2	BMA	B	3	2	11,11,12	0.64	0	15,15,17	1.74	1 (6%)
2	MAN	B	4	2	11,11,12	0.55	0	15,15,17	2.73	7 (46%)
2	MAN	B	5	2	11,11,12	0.64	0	15,15,17	1.03	1 (6%)
2	MAN	B	6	2	11,11,12	0.64	0	15,15,17	1.29	1 (6%)

In the following table, the Chirals column lists the number of chiral outliers, the number of chiral centers analysed, the number of these observed in the model and the number defined in the Chemical Component Dictionary. Similar counts are reported in the Torsion and Rings columns. '-' means no outliers of that kind were identified.

Mol	Type	Chain	Res	Link	Chirals	Torsions	Rings
2	NAG	B	1	1,2	-	0/6/23/26	0/1/1/1
2	NAG	B	2	2	-	4/6/23/26	0/1/1/1
2	BMA	B	3	2	-	2/2/19/22	0/1/1/1
2	MAN	B	4	2	-	2/2/19/22	0/1/1/1
2	MAN	B	5	2	-	0/2/19/22	0/1/1/1
2	MAN	B	6	2	-	2/2/19/22	1/1/1/1

There are no bond length outliers.

All (15) bond angle outliers are listed below:

Mol	Chain	Res	Type	Atoms	Z	Observed(°)	Ideal(°)
2	B	4	MAN	C1-O5-C5	7.57	122.33	112.19
2	B	3	BMA	C2-C3-C4	-5.55	101.10	110.86
2	B	2	NAG	C2-N2-C7	-4.14	117.36	122.90
2	B	6	MAN	C1-C2-C3	-3.65	104.33	109.64

Continued on next page...

Continued from previous page...

Mol	Chain	Res	Type	Atoms	Z	Observed(°)	Ideal(°)
2	B	4	MAN	C2-C3-C4	-3.52	104.68	110.86
2	B	1	NAG	C2-N2-C7	-3.22	118.59	122.90
2	B	1	NAG	C1-O5-C5	3.13	116.38	112.19
2	B	4	MAN	O5-C5-C4	3.12	118.41	110.83
2	B	4	MAN	C6-C5-C4	-2.85	106.03	113.02
2	B	4	MAN	C3-C4-C5	2.78	115.27	110.23
2	B	4	MAN	C1-C2-C3	2.43	113.19	109.64
2	B	4	MAN	O3-C3-C2	2.40	114.96	110.05
2	B	5	MAN	C1-C2-C3	2.29	112.98	109.64
2	B	2	NAG	C3-C4-C5	-2.08	106.46	110.23
2	B	2	NAG	O4-C4-C3	2.06	115.24	110.38

There are no chirality outliers.

All (10) torsion outliers are listed below:

Mol	Chain	Res	Type	Atoms
2	B	2	NAG	O5-C5-C6-O6
2	B	4	MAN	C4-C5-C6-O6
2	B	4	MAN	O5-C5-C6-O6
2	B	3	BMA	C4-C5-C6-O6
2	B	2	NAG	C4-C5-C6-O6
2	B	3	BMA	O5-C5-C6-O6
2	B	2	NAG	C8-C7-N2-C2
2	B	6	MAN	O5-C5-C6-O6
2	B	2	NAG	O7-C7-N2-C2
2	B	6	MAN	C4-C5-C6-O6

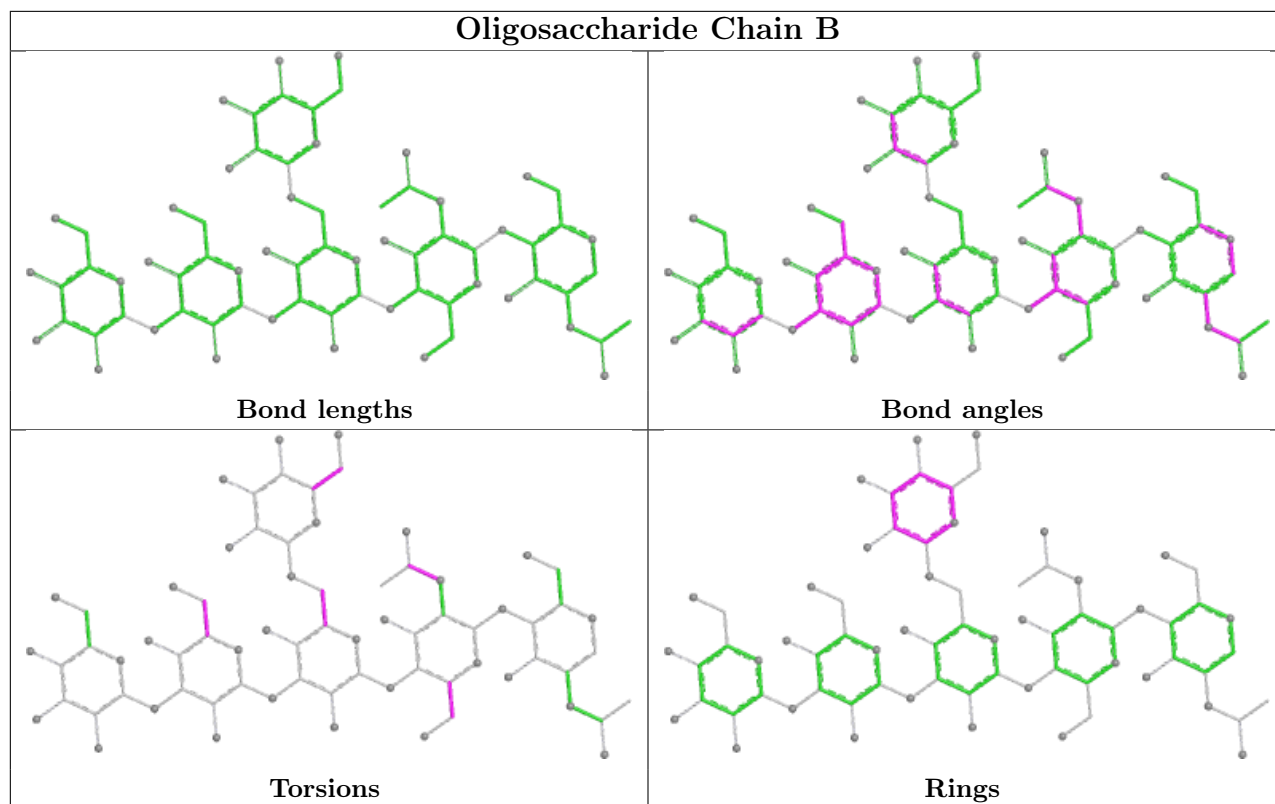
All (1) ring outliers are listed below:

Mol	Chain	Res	Type	Atoms
2	B	6	MAN	C1-C2-C3-C4-C5-O5

3 monomers are involved in 4 short contacts:

Mol	Chain	Res	Type	Clashes	Symm-Clashes
2	B	5	MAN	2	0
2	B	3	BMA	2	0
2	B	2	NAG	4	0

The following is a two-dimensional graphical depiction of Mogul quality analysis of bond lengths, bond angles, torsion angles, and ring geometry for oligosaccharide.



5.6 Ligand geometry [i](#)

4 ligands are modelled in this entry.

In the following table, the Counts columns list the number of bonds (or angles) for which Mogul statistics could be retrieved, the number of bonds (or angles) that are observed in the model and the number of bonds (or angles) that are defined in the Chemical Component Dictionary. The Link column lists molecule types, if any, to which the group is linked. The Z score for a bond length (or angle) is the number of standard deviations the observed value is removed from the expected value. A bond length (or angle) with $|Z| > 2$ is considered an outlier worth inspection. RMSZ is the root-mean-square of all Z scores of the bond lengths (or angles).

Mol	Type	Chain	Res	Link	Bond lengths			Bond angles		
					Counts	RMSZ	# Z > 2	Counts	RMSZ	# Z > 2
4	ATP	A	508	-	28,33,33	1.13	2 (7%)	34,52,52	1.10	2 (5%)
5	GOL	A	510	-	5,5,5	0.39	0	5,5,5	0.41	0
3	NAG	A	507	1	14,14,15	0.65	0	17,19,21	2.03	2 (11%)
5	GOL	A	509	-	5,5,5	0.33	0	5,5,5	0.72	0

In the following table, the Chirals column lists the number of chiral outliers, the number of chiral centers analysed, the number of these observed in the model and the number defined in the Chemical Component Dictionary. Similar counts are reported in the Torsion and Rings columns. '-' means no outliers of that kind were identified.

Mol	Type	Chain	Res	Link	Chirals	Torsions	Rings
4	ATP	A	508	-	-	2/18/38/38	0/3/3/3
5	GOL	A	510	-	-	2/4/4/4	-
3	NAG	A	507	1	-	4/6/23/26	0/1/1/1
5	GOL	A	509	-	-	2/4/4/4	-

All (2) bond length outliers are listed below:

Mol	Chain	Res	Type	Atoms	Z	Observed(Å)	Ideal(Å)
4	A	508	ATP	PB-O3A	2.70	1.62	1.59
4	A	508	ATP	PA-O3A	2.52	1.62	1.59

All (4) bond angle outliers are listed below:

Mol	Chain	Res	Type	Atoms	Z	Observed(°)	Ideal(°)
3	A	507	NAG	O5-C1-C2	5.63	120.00	111.29
3	A	507	NAG	C1-O5-C5	5.34	119.35	112.19
4	A	508	ATP	N3-C2-N1	-4.03	123.21	128.67
4	A	508	ATP	C4-C5-N7	-2.53	106.66	109.34

There are no chirality outliers.

All (10) torsion outliers are listed below:

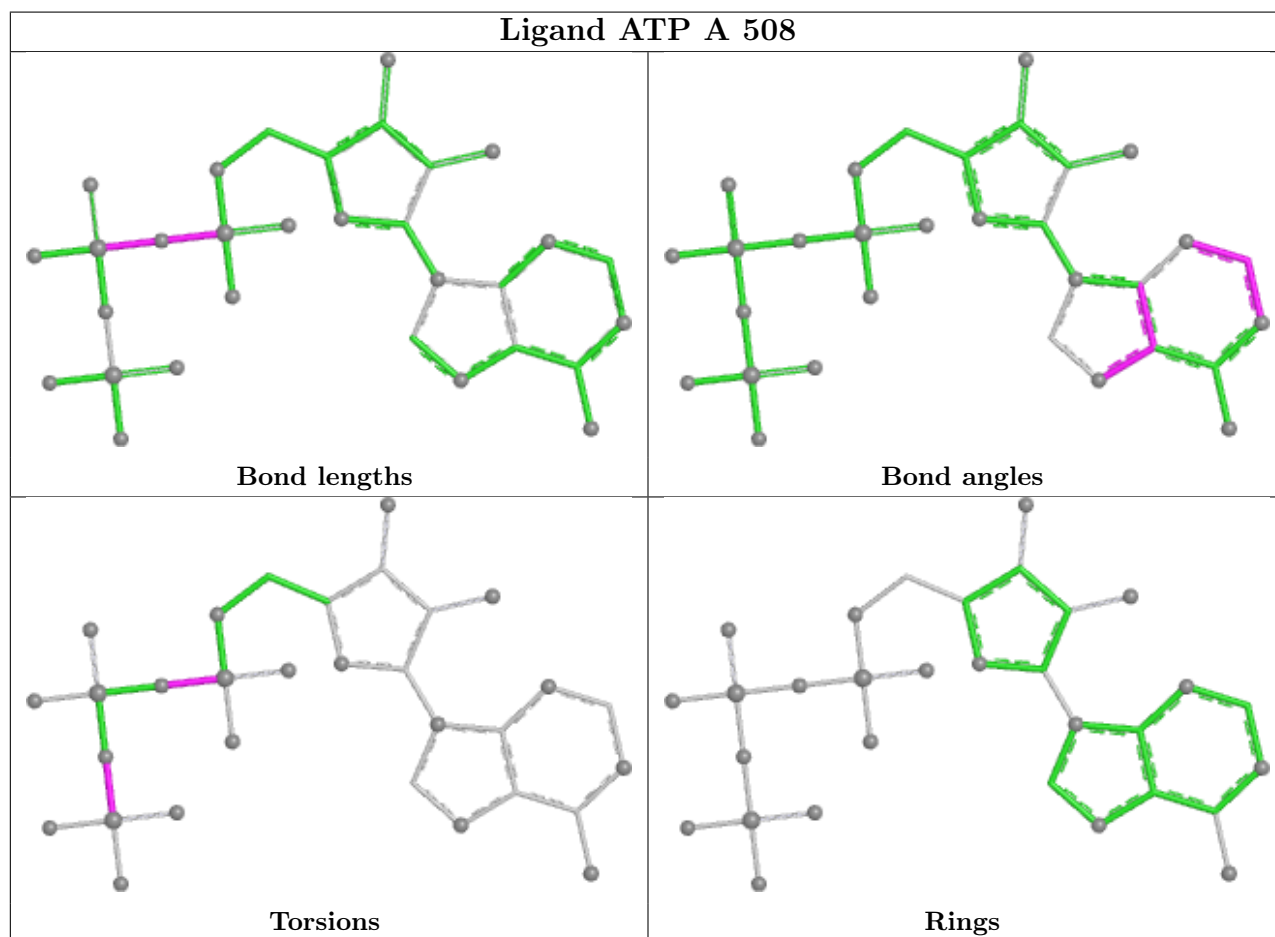
Mol	Chain	Res	Type	Atoms
3	A	507	NAG	C8-C7-N2-C2
3	A	507	NAG	O7-C7-N2-C2
4	A	508	ATP	PB-O3B-PG-O3G
5	A	510	GOL	O1-C1-C2-C3
3	A	507	NAG	O5-C5-C6-O6
5	A	509	GOL	O1-C1-C2-C3
5	A	509	GOL	O1-C1-C2-O2
5	A	510	GOL	O1-C1-C2-O2
4	A	508	ATP	PB-O3A-PA-O1A
3	A	507	NAG	C4-C5-C6-O6

There are no ring outliers.

3 monomers are involved in 4 short contacts:

Mol	Chain	Res	Type	Clashes	Symm-Clashes
4	A	508	ATP	3	0
5	A	510	GOL	1	0
5	A	509	GOL	1	0

The following is a two-dimensional graphical depiction of Mogul quality analysis of bond lengths, bond angles, torsion angles, and ring geometry for all instances of the Ligand of Interest. In addition, ligands with molecular weight > 250 and outliers as shown on the validation Tables will also be included. For torsion angles, if less than 5% of the Mogul distribution of torsion angles is within 10 degrees of the torsion angle in question, then that torsion angle is considered an outlier. Any bond that is central to one or more torsion angles identified as an outlier by Mogul will be highlighted in the graph. For rings, the root-mean-square deviation (RMSD) between the ring in question and similar rings identified by Mogul is calculated over all ring torsion angles. If the average RMSD is greater than 60 degrees and the minimal RMSD between the ring in question and any Mogul-identified rings is also greater than 60 degrees, then that ring is considered an outlier. The outliers are highlighted in purple. The color gray indicates Mogul did not find sufficient equivalents in the CSD to analyse the geometry.



5.7 Other polymers [\(i\)](#)

There are no such residues in this entry.

5.8 Polymer linkage issues [\(i\)](#)

There are no chain breaks in this entry.

6 Fit of model and data

6.1 Protein, DNA and RNA chains

In the following table, the column labelled ‘#RSRZ> 2’ contains the number (and percentage) of RSRZ outliers, followed by percent RSRZ outliers for the chain as percentile scores relative to all X-ray entries and entries of similar resolution. The OWAB column contains the minimum, median, 95th percentile and maximum values of the occupancy-weighted average B-factor per residue. The column labelled ‘Q< 0.9’ lists the number of (and percentage) of residues with an average occupancy less than 0.9.

Mol	Chain	Analysed	<RSRZ>	#RSRZ>2	OWAB(Å ²)	Q<0.9
1	A	324/340 (95%)	0.70	53 (16%) 5 5	56, 77, 181, 204	0

All (53) RSRZ outliers are listed below:

Mol	Chain	Res	Type	RSRZ
1	A	143	ARG	5.9
1	A	218	THR	5.9
1	A	272	TRP	5.7
1	A	348	LEU	5.4
1	A	294	GLY	5.0
1	A	42	VAL	4.7
1	A	43	ILE	4.7
1	A	349	LEU	4.6
1	A	130	THR	4.3
1	A	346	LEU	4.3
1	A	157	ALA	4.0
1	A	351	LEU	4.0
1	A	141	ASP	3.8
1	A	355	ILE	3.7
1	A	359	ILE	3.7
1	A	274	VAL	3.6
1	A	352	VAL	3.6
1	A	271	SER	3.6
1	A	173	ILE	3.6
1	A	59	ASP	3.3
1	A	202	ASN	3.2
1	A	358	TRP	3.2
1	A	142	ALA	3.1
1	A	155	TYR	3.1
1	A	38	THR	3.1
1	A	347	ALA	3.1
1	A	82	LEU	3.0

Continued on next page...

Continued from previous page...

Mol	Chain	Res	Type	RSRZ
1	A	275	PRO	2.9
1	A	41	LEU	2.9
1	A	54	ASN	2.9
1	A	336	ILE	2.9
1	A	124	THR	2.8
1	A	174	VAL	2.7
1	A	52	VAL	2.6
1	A	217	LEU	2.6
1	A	37	PHE	2.6
1	A	342	ILE	2.6
1	A	144	GLY	2.5
1	A	289	ASN	2.4
1	A	158	SER	2.3
1	A	53	TYR	2.3
1	A	133	ARG	2.2
1	A	156	SER	2.2
1	A	292	ALA	2.2
1	A	288	ASP	2.2
1	A	40	ALA	2.1
1	A	47	ILE	2.1
1	A	350	GLY	2.1
1	A	309	THR	2.1
1	A	193	LYS	2.0
1	A	307	ASP	2.0
1	A	80	SER	2.0
1	A	301	LYS	2.0

6.2 Non-standard residues in protein, DNA, RNA chains [\(i\)](#)

There are no non-standard protein/DNA/RNA residues in this entry.

6.3 Carbohydrates [\(i\)](#)

In the following table, the Atoms column lists the number of modelled atoms in the group and the number defined in the chemical component dictionary. The B-factors column lists the minimum, median, 95th percentile and maximum values of B factors of atoms in the group. The column labelled 'Q< 0.9' lists the number of atoms with occupancy less than 0.9.

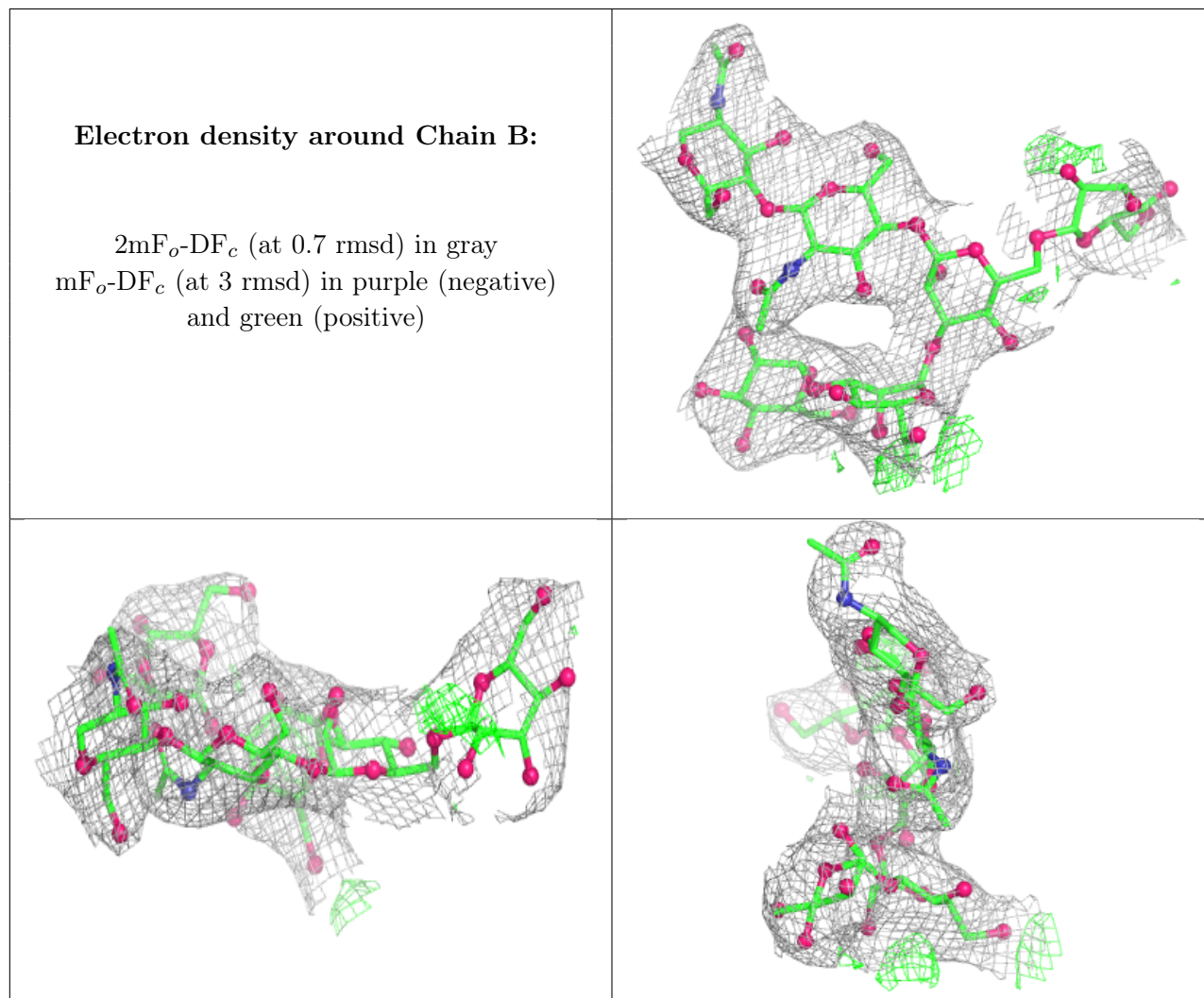
Mol	Type	Chain	Res	Atoms	RSCC	RSR	B-factors(Å ²)	Q<0.9
2	MAN	B	6	11/12	0.53	0.17	121,133,138,143	0
2	BMA	B	3	11/12	0.74	0.14	97,107,117,125	0

Continued on next page...

Continued from previous page...

Mol	Type	Chain	Res	Atoms	RSCC	RSR	B-factors(\AA^2)	Q<0.9
2	MAN	B	4	11/12	0.84	0.14	78,89,92,93	0
2	MAN	B	5	11/12	0.93	0.11	73,79,84,84	0
2	NAG	B	2	14/15	0.96	0.08	71,88,92,104	0
2	NAG	B	1	14/15	0.97	0.10	74,83,91,92	0

The following is a graphical depiction of the model fit to experimental electron density for oligosaccharide. Each fit is shown from different orientation to approximate a three-dimensional view.

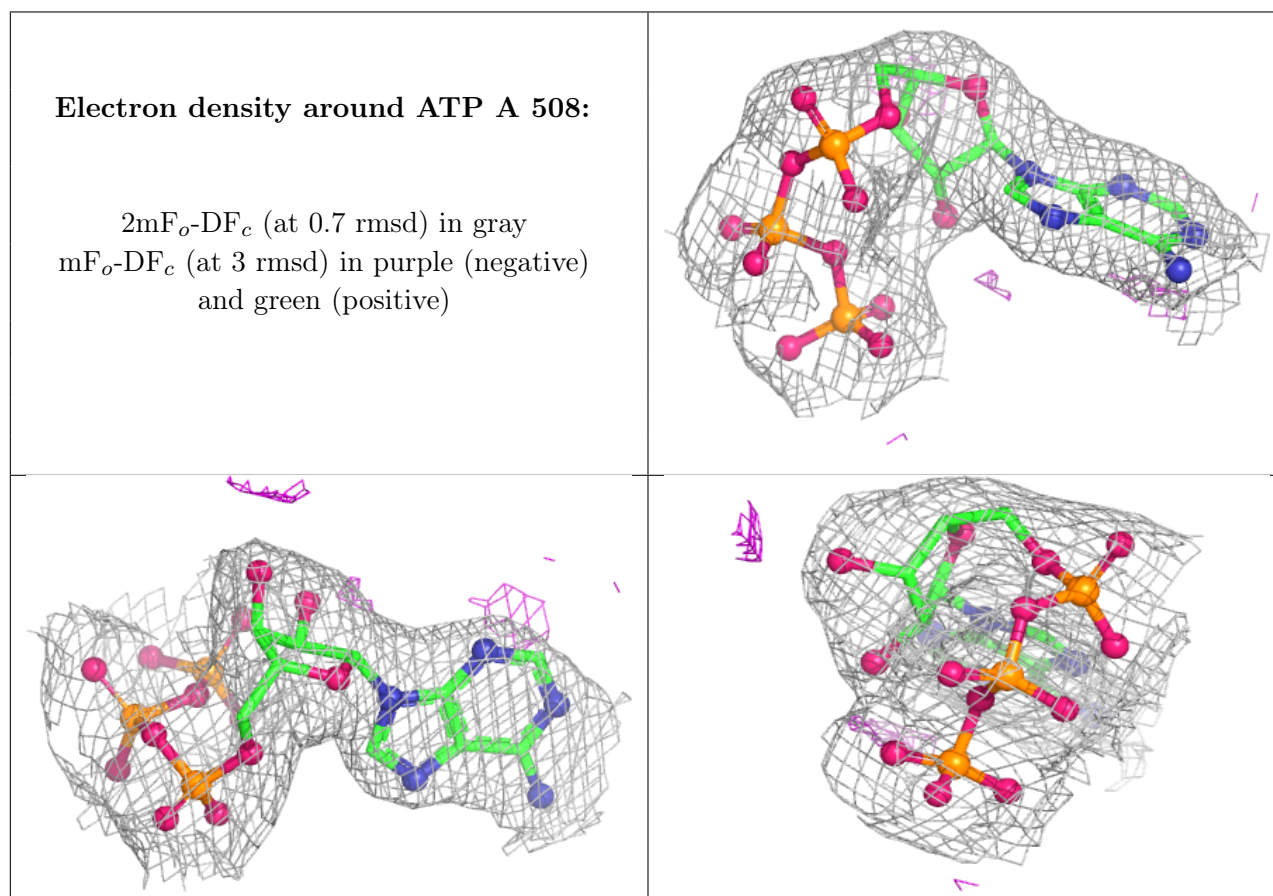


6.4 Ligands [i](#)

In the following table, the Atoms column lists the number of modelled atoms in the group and the number defined in the chemical component dictionary. The B-factors column lists the minimum, median, 95th percentile and maximum values of B factors of atoms in the group. The column labelled 'Q< 0.9' lists the number of atoms with occupancy less than 0.9.

Mol	Type	Chain	Res	Atoms	RSCC	RSR	B-factors(\AA^2)	Q<0.9
3	NAG	A	507	14/15	0.29	0.21	107,124,127,127	0
5	GOL	A	510	6/6	0.83	0.19	86,90,95,96	0
5	GOL	A	509	6/6	0.95	0.18	68,71,72,74	0
4	ATP	A	508	31/31	0.98	0.06	58,64,71,74	0

The following is a graphical depiction of the model fit to experimental electron density of all instances of the Ligand of Interest. In addition, ligands with molecular weight > 250 and outliers as shown on the geometry validation Tables will also be included. Each fit is shown from different orientation to approximate a three-dimensional view.



6.5 Other polymers [i](#)

There are no such residues in this entry.